

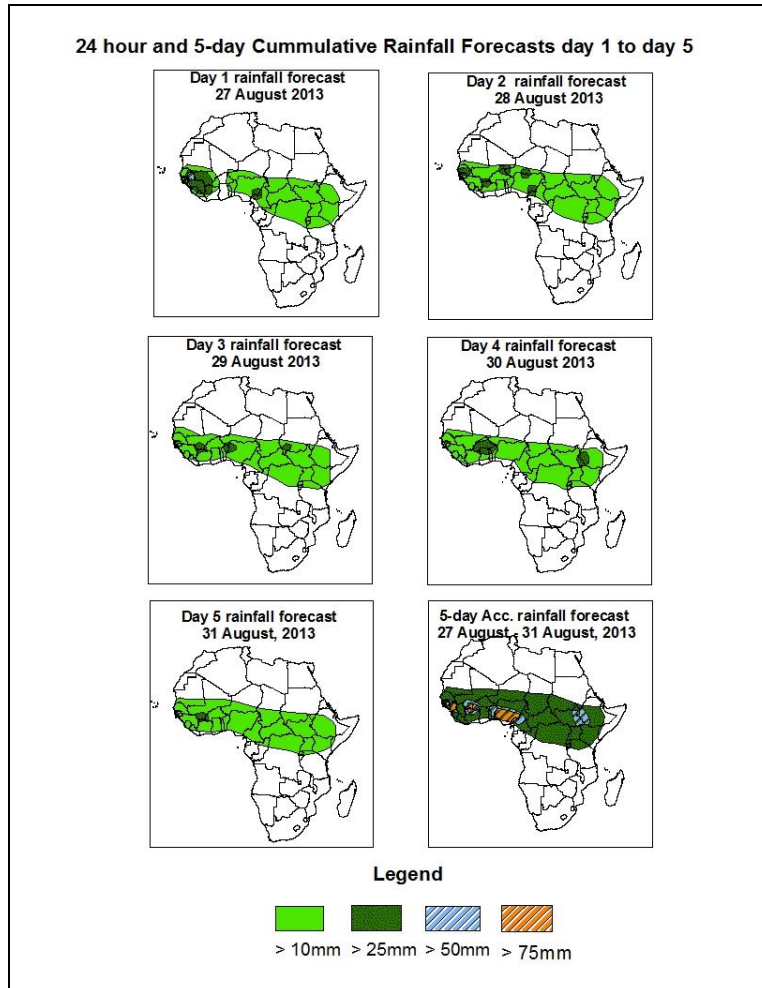


# NCEP Contributions to the WMO Severe Weather Forecasting Demonstration Project (SWFDP) and to the African Monsoon Multidisciplinary Analysis (AMMA) Initiative

## 1.0. Rainfall Forecast: Valid 06Z of 27 August – 06Z of 31 August, 2013. (Issued at 1700Z of 26 August 2013)

### 1.1. Twenty Four Hour Cumulative Rainfall Forecasts

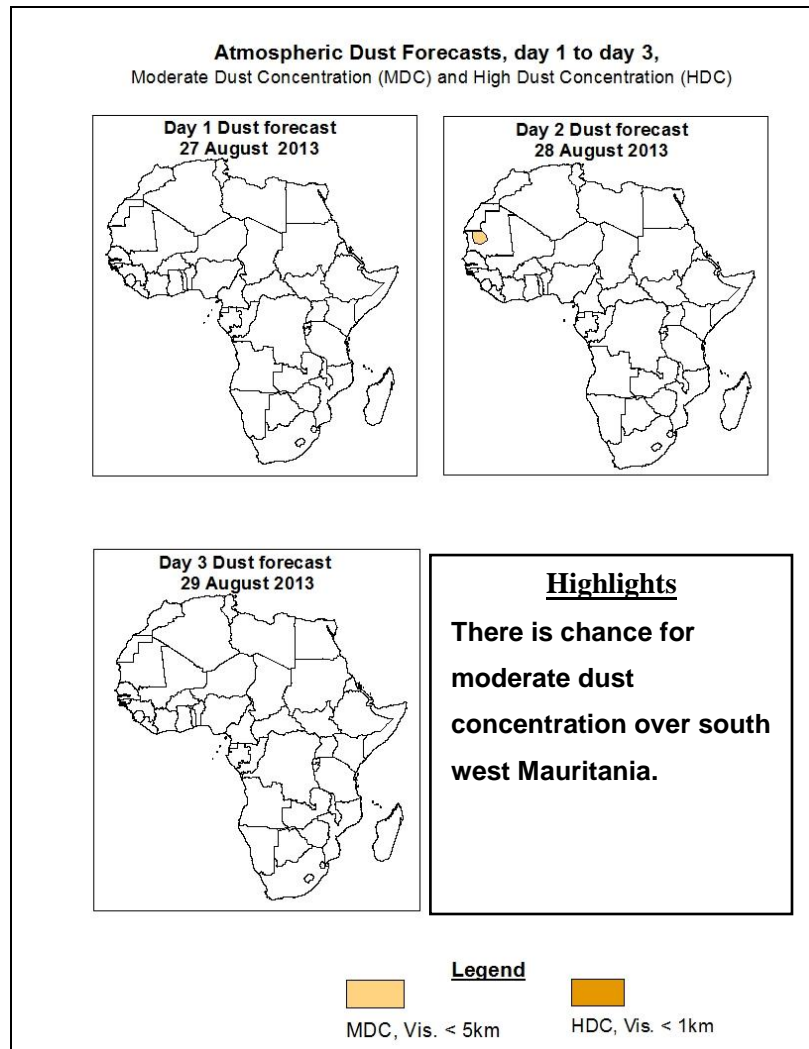
The forecasts are expressed in terms of 75% probability of precipitation (POP) exceeded, based on the NCEP, UK Met Office and the ECMWF NWP outputs, the NCEP global ensemble forecasts system (GEFS) and expert assessment.



### Summary

In the next five days, favorable conditions are expected to modulate rainfall activities over eastern and West Africa with more activities over the south Sahel while suppressed conditions are also expected to continue along the Gulf of Guinea coast. Strong cross equatorial flow, with its associated convergence over the Horn of Africa is expected to increase rainfall over East Africa. Thus, there is an increased chance for moderate to heavy rainfall over Conakry Guinea, Bissau Guinea, Sierra Leone, Liberia, south west *Niger*, *South Chad*, *Sudan*, *West Ethiopia* and *central Nigeria*.

## 1.2. Atmospheric Dust Forecasts: Valid 27 - 29 August 2012



## 1.2. Model Discussion: Valid from 00Z of 26 August 2013

*Model comparison (Valid from 00Z;26 August, 2013) shows all the three models are in general agreement in terms of depicting positions of the northern and southern hemisphere sub-tropical highs, while they showed slight differences in depicting their intensity.*

The Azores High Pressure System over Northeast Atlantic Ocean is expected to slightly intensify during 24 to 72 hours. Its central pressure value is expected to increase from about 1028hpa to 1029hpa according to both models.

The St. Helena High Pressure System over southeast Atlantic Ocean is expected to also intensify during the forecast period; its central pressure value is expected to increase from about 1025hpa to 1033hpa according to GFS and UKMET models.

The Mascarene high pressure system over southwestern Indian Ocean is expected to increase during 24 to 72 hours, before decrease. Its central pressure value is expected to increase from about 1033hpa to 1037hpa according to GFS and UKMET models, from about 1033hpa to 1036hpa according to ECMWF.

The heat lows over the central Sahel and neighboring areas are expected to weaken slightly during 24 to 72 hours period especially over Mali and Mauritania according to GFS, ECMWF and UKMET models. Its value is expected to increase from about 1006hpa to 1008hpa according GFS model, from about 1007hpa to 1008hpa according to UK model and from about 1005hpa to 1008hpa according UKMET model, the seasonal lows across the red sea and its neighboring areas are expected to maintain its positions during the forecast period according to both models, it's expected to be around 1002hpa according to GFS model, for about 1004hpa according to ECMWF and UKMET models.

At the 850hPa level, monsoon wind flow continues to dominate flow across West Africa and the Horn of Africa. The inter-tropical front is also expected to shift slightly to the south compare with its current position to have an average position of latitude 20°N, while meridional wind convergence will dominate flow across East Africa. Suppressed rainfall along Guinea Gulf coast is expected to persist as wind and surface pressure conditions gradually improve over the area during the forecast period. The frequency in number of vortices at this level and wind convergence over the region is expected to be maintained over the region with high to moderate rainfall over West of Western Africa.

At 700hpa level, wind flow maintains northeasterly to easterly flow pattern between. Few vortices and trough lines also are expected to occur from East to west with least intensity compare to the least week and likely to facilitate westward propagation of systems across the region during the period.

At 500hpa level, winds associated with mid-tropospheric easterly jet are expected to have common speeds of 30kts over Sahel.

At 150hPa level, tropical easterly jets are expected to become less strong and the core is expected to be over East Africa during the forecast period. Speeds of 30 to 55kts are common over West. However, speeds exceeding 60kts and above are observed over Ethiopia, eastern Sudan and Somalia during the forecast period.

In the next five days, favorable conditions are expected to modulate rainfall activities over eastern and West Africa with more activities over the south Sahel while suppressed conditions are also expected to continue along the Gulf of Guinea coast. Strong cross equatorial flow, with its associated convergence over the Horn of Africa is expected to increase rainfall over East Africa. Thus, there is an increased chance for moderate to heavy rainfall over Conakry Guinea, Bissau Guinea, Sierra Leone, Liberia, south west Niger, South Chad, Sudan, West Ethiopia and central Nigeria.

## 2.0. Previous and Current Day Weather Discussion over Africa

(25 August 2013 – 26 August 2013)

### 2.1. Weather assessment for the previous day (25 August 2013)

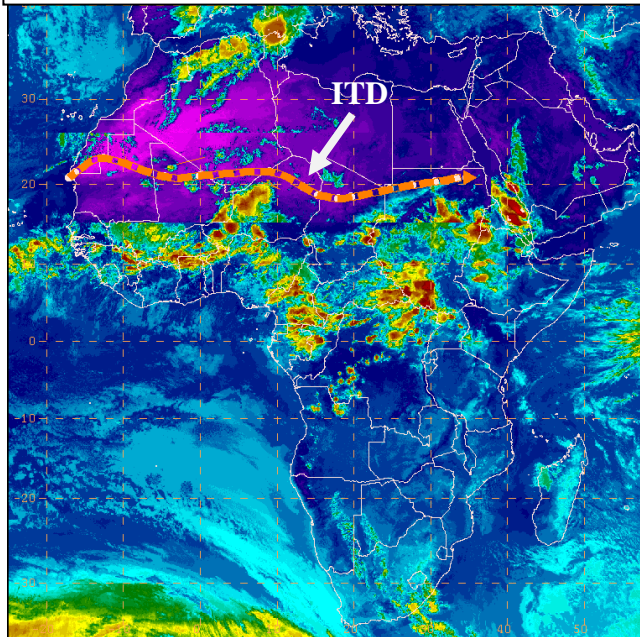
Not available

### 2.2. Weather assessment for the current day (26 August 2013)

Intense clouds were observed over North West and West Niger, Burkina Faso, South east Chad, CAR, Ethiopia, Sudan, South West Mali, Cameroon, North East DRC.

The ITD is located at an average position of latitude 20°N over Africa.

IR Satellite Image (valid 1630Z of 26 August 2013)



*Previous day rainfall condition over Africa (top Left) based on the NCEP CPCE/RFE and current day cloud cover (top right) based on IR Satellite image*

**Author:** Kassimou Abdou, (ACMAD / CPC-African Desk); [kassimou.abdou@noaa.gov](mailto:kassimou.abdou@noaa.gov)