

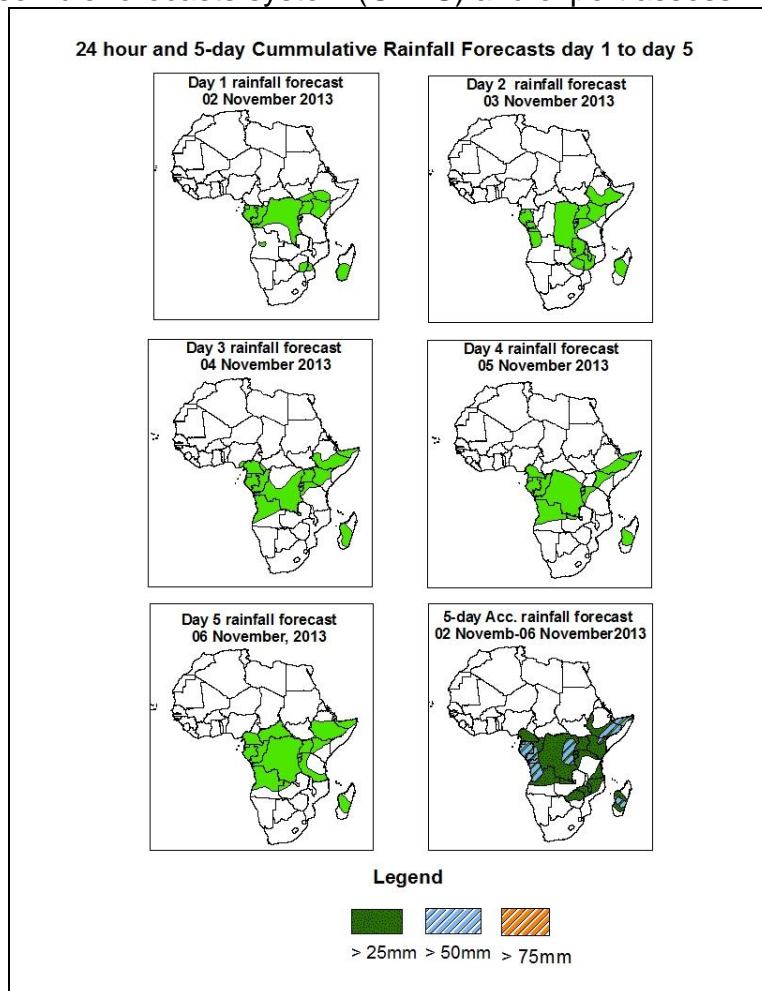


NCEP Contributions to the WMO Severe Weather Forecasting Demonstration Project (SWFDP) and to the African Monsoon Multidisciplinary Analysis (AMMA) Initiative

1.0. Rainfall Forecast: Valid 06Z of 02 November – 06Z of 06 November, 2013. (Issued at 1800Z of 01 November 2013)

1.1. Twenty Four Hour Cumulative Rainfall Forecasts

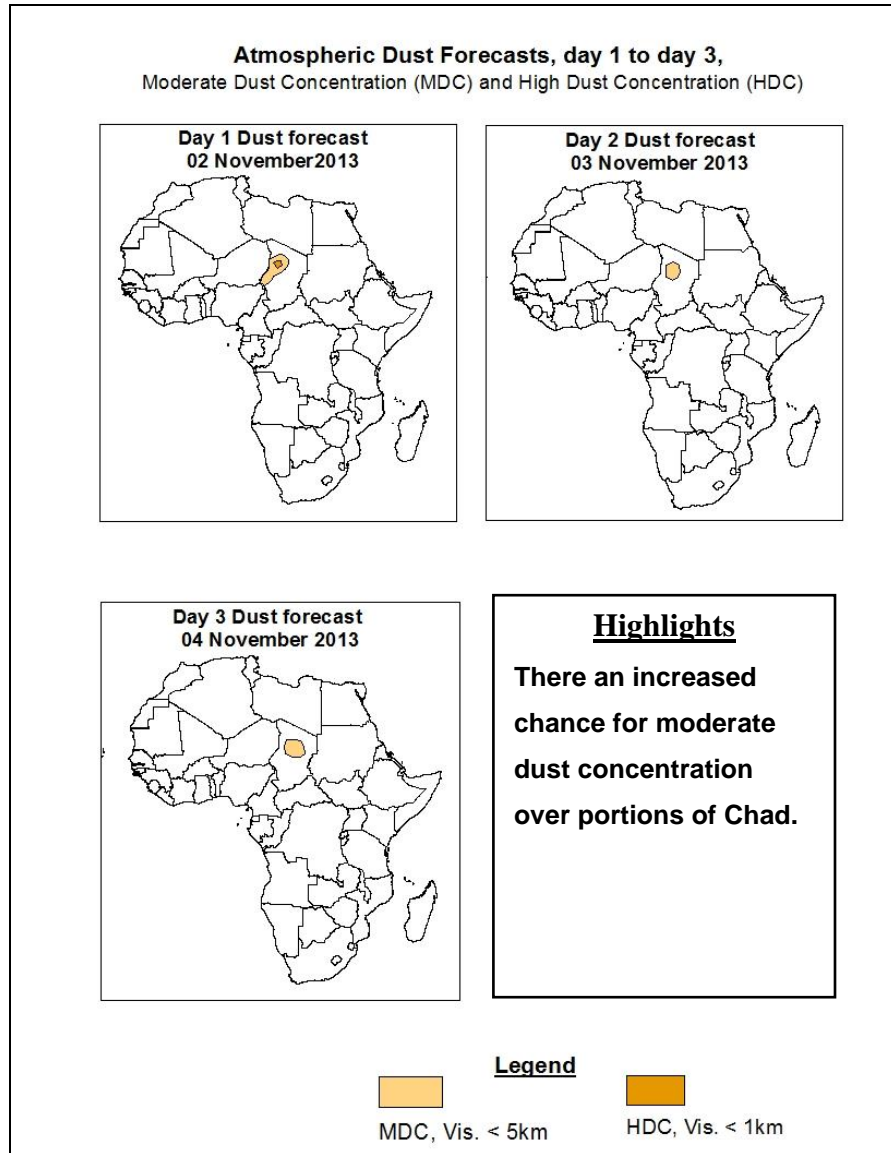
The forecasts are expressed in terms of 75% probability of precipitation (POP) exceeded, based on the NCEP, UK Met Office and the ECMWF NWP outputs, the NCEP global ensemble forecasts system (GEFS) and expert assessment.



Summary

In the next five days, a low level-wind convergence over Gabon, Congo, DRC, seasonal wind convergence over the Lake Victoria region and Angola, moist cross-equatorial flow its associated convergence over Horn of Africa, interaction between mid-latitude and tropical weather systems across Southeast Africa are expected to enhance rainfall in their respective regions. Hence, there is an increased chance for heavy rainfall over parts southern Cameroon, Equatorial Guinea, Gabon, Congo, Angola, DRC, the Lake Victoria region, Ethiopia and Somalia, and southern Madagascar.

1.2. Atmospheric Dust Forecasts: Valid 02 November- 04 November 2013



1.2. Model Discussion: Valid from 00Z of 01 November 2013

Model comparison (Valid from 00Z:01 November 2013) shows all the three models are in general agreement in terms of depicting positions of the northern and southern hemisphere sub-tropical highs, while they showed slight differences in depicting their intensity.

The St. Helena High Pressure System over southeast Atlantic Ocean is expected to weaken gradually during the forecast period. Its central pressure value is expected to decrease from about 1031hpa to 1024hpa according to the ECMWF model, from 1030hpa to 1024hpa according to GFS model and from 1031hpa to 1026hpa according to the UKMET model.

The Mascarene high pressure system over southwestern Indian Ocean is expected to Weaken through 24 to 72 hours. The central pressure value of this high pressure system is expected to decrease from 1028hpa to 1021hpa according to the ECMWF model, from 1028hpa to 1019hpa according to the GFS model and from about 1028hpa to 1019hpa according to the UKMET model.

At 850hpa, moist cross-equatorial flow and its associated convergence is expected to dominate the flow over the Horn of Africa through 24 to 120 hours. Seasonal wind convergence Guinea, the Lake Victoria area, Ethiopia, Cameroon, Gabon, Congo, DRC, Angola, Namibia, Zambia, Zimbabwe, Mozambique and South Africa is expected remain active during the forecast period. Interaction between mid-latitude and tropical weather systems is expected to enhance rainfall over Centre Africa Countries and Southeast Africa.

At 500hpa, a trough associated with mid-latitude frontal system is expected to weaken while shifting between North and Northeast Africa through 24 to 120 hours. A mid-latitude cyclone and its associated trough are expected to propagate across southern Africa countries while weakening during the forecast period.

At 200hpa level, the sub-tropical Westerly Jet (with >90kts wind speed), extending between northern Algeria and Egypt, across Libya through 24 to 48 hours, and it tends

to weaken though 72 to 120hours. Jet about (with >90kt) extending between Namibia , south of Indian Ocean , across Botswana, south Mozambique and north of South Africa.

In the next five days, a low level-wind convergence over Gabon, Congo, DRC, seasonal wind convergence over the Lake Victoria region and Angola, moist cross-equatorial flow its associated convergence over Horn of Africa, interaction between mid-latitude and tropical weather systems across Southeast Africa are expected to enhance rainfall in their respective regions. Hence, there is an increased chance for heavy rainfall over parts southern Cameroon, Equatorial Guinea, Gabon, Congo, Angola, DRC, the Lake Victoria region, Ethiopia and Somalia, and southern Madagascar.

2.0. Previous and Current Day Weather Discussion over Africa

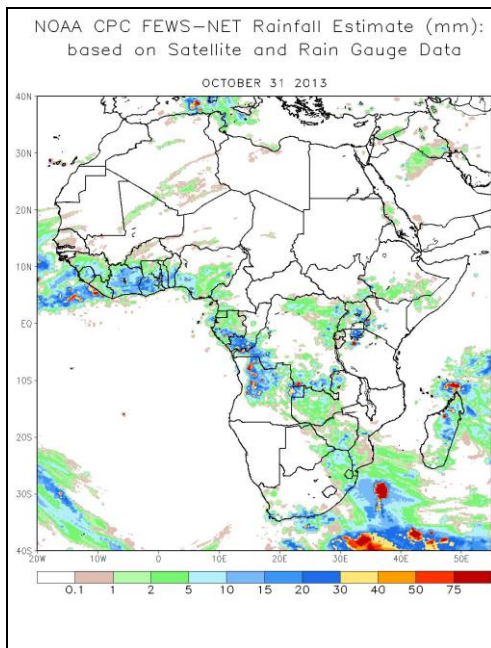
(31 October 2013 – 01 November 2013)

2.1. Weather assessment for the previous day (31 October 2013)

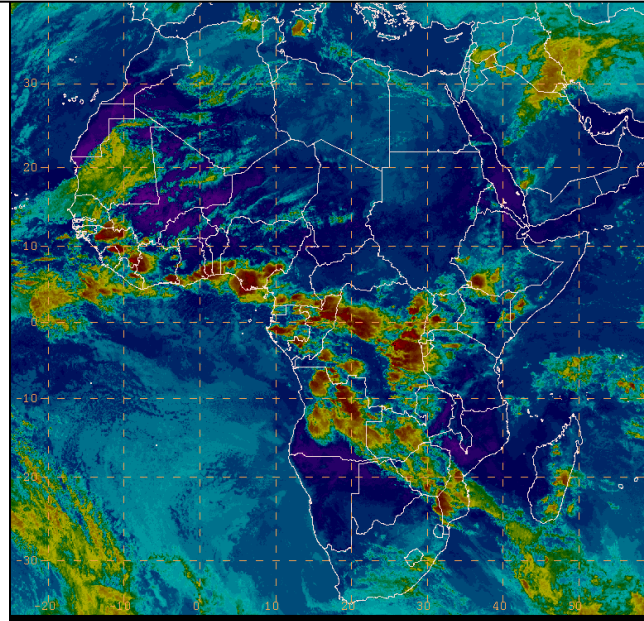
During the previous day, moderate to locally heavy rainfall was observed over Guinea countries area, Cameroon, Congo, DRC, Lake Victoria area, Angola, East South Africa and north Madagascar..

2.2. Weather assessment for the current day (01 November 2013)

Intense clouds were observed over the western portions of the Gulf of Guinea region, Central African countries, Lake Victoria region, Angola, Mozambique, and Zimbabwe.



IR Satellite Image (valid 1722Z of 01 November 2013)



Previous day rainfall condition over Africa (top Left) based on the NCEP CPCE/RFE and current day cloud cover (top right) based on IR Satellite image

Author: Domingos Quenda, (Centro Nacional de Previsao de Tempo-Angola / CPC-African Desk); domingos.quendau@noaa.gov