

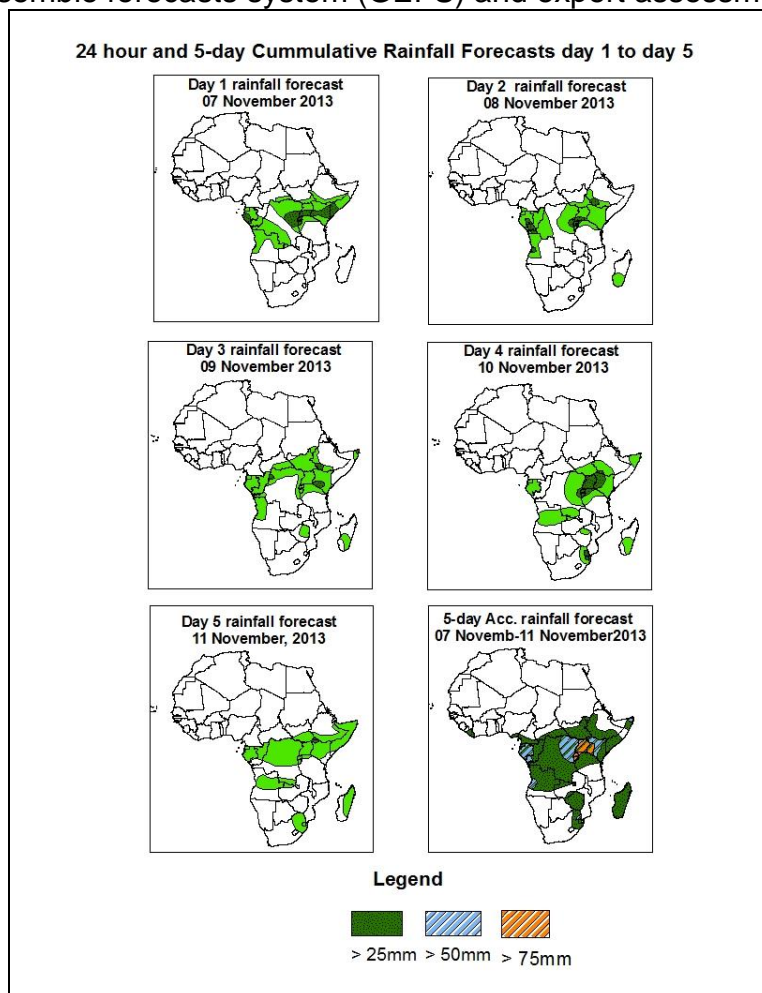


NCEP Contributions to the WMO Severe Weather Forecasting Demonstration Project (SWFDP) and to the African Monsoon Multidisciplinary Analysis (AMMA) Initiative

1.0. Rainfall Forecast: Valid 06Z of 07 November – 06Z of 11 November, 2013. (Issued at 1800Z of 06 November 2013)

1.1. Twenty Four Hour Cumulative Rainfall Forecasts

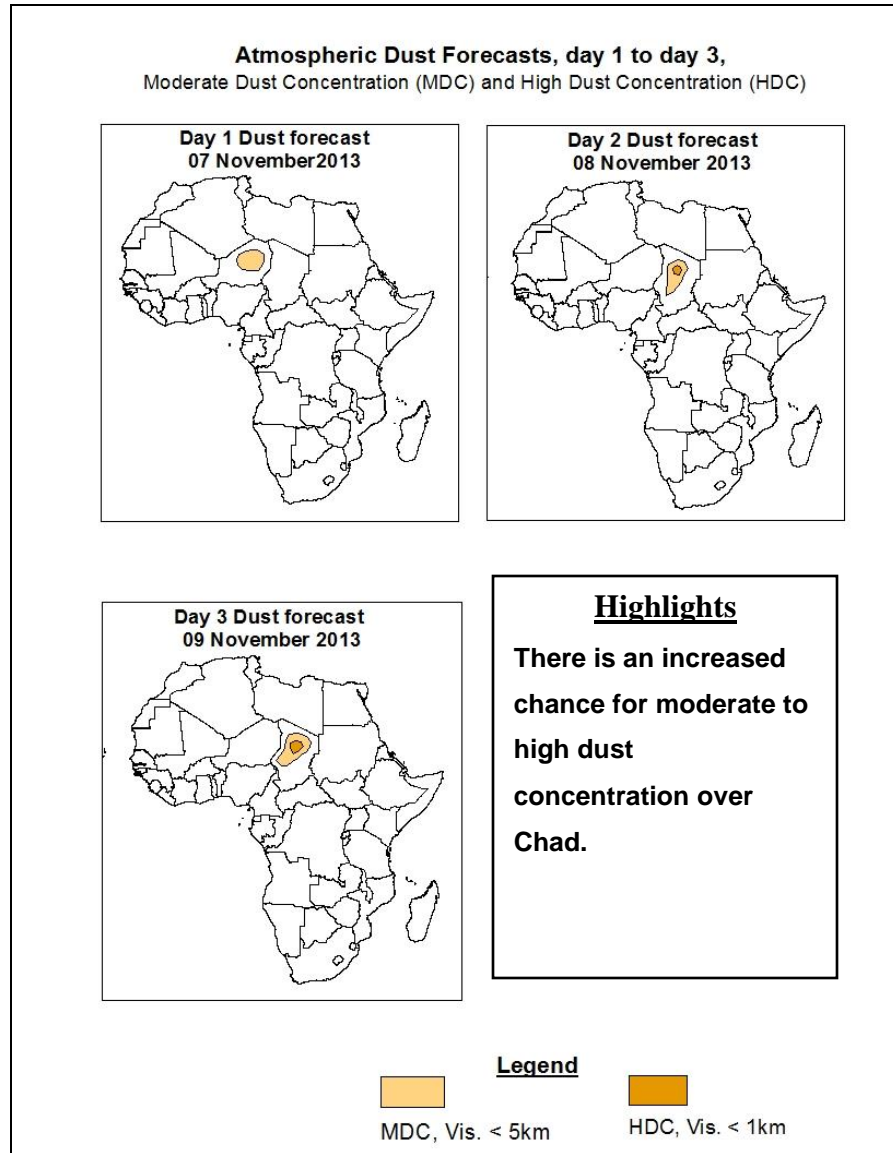
The forecasts are expressed in terms of 75% probability of precipitation (POP) exceeded, based on the NCEP, UK Met Office and the ECMWF NWP outputs, the NCEP global ensemble forecasts system (GEFS) and expert assessment.



Summary

In the next five days, a low level-wind convergence over Gabon, Congo, DRC, seasonal wind convergence over the Lake Victoria region and Angola, moist easterly flow from the North Indian Ocean and its associated convergence over the Horn of Africa, interaction between mid-latitude and tropical weather systems across Southeast Africa are expected to enhance rainfall in their respective regions. Hence, there is an increased chance for moderate to heavy rainfall over southern Cameroon, Equatorial Guinea, Gabon, Congo, Angola, DRC, the Lake Victoria region, Ethiopia, Somalia, Swaziland, eastern South Africa and Madagascar.

1.2. Atmospheric Dust Forecasts: Valid 07 November- 09 November 2013



1.2. Model Discussion: Valid from 00Z of 06 November 2013

Model comparison (Valid from 00Z:06 November 2013) shows all the three models are in general agreement in terms of depicting positions of the northern and southern hemisphere sub-tropical highs, while they showed slight differences in depicting their intensity.

The St. Helena High Pressure System over southeast Atlantic Ocean is expected to weaken gradually during the forecast period. Its central pressure value is expected to decrease from 1032hpa to 1022hpa according to GFS model and from 1033hpa to 1024hpa according to the UKMET model.

The Mascarene high pressure system over southwestern Indian Ocean is expected to Weaken through 24 to 72 hours. The central pressure value of this high pressure system is expected to decrease from 1025hpa to 1019hpa according to the GFS model and from about 1025hpa to 1019hpa according to the UKMET model.

At 850hpa, moist cross-equatorial flow and its associated convergence is expected to dominate the flow over the Horn of Africa through 24 to 120 hours. Seasonal wind convergence over the Lake Victoria area, Ethiopia, Somalia, Cameroon, Gabon, DRC, Angola, Namibia, Zambia, Botswana, Mozambique channel, Lesotho and South Africa is expected remain active during the forecast period. Interaction between mid-latitude and tropical weather systems is expected moderate to heavy rainfall over Horn of Africa, Lake Vitoria region, Cameroon, Gabon, Congo, DRC, Angola, Zimbabwe, Swaziland, eastern South Africa and Madagascar.

At 500hpa, a trough associated with mid-latitude frontal system is expected to weaken while shifting between North and Northeast Africa through 24 to 120 hours.

At 200hpa level, the sub-tropical Westerly Jet (with 70 - 90kts wind speed), extending between southeast Libya and Egypt through 24 to 48 hours, and it tends to weaken though 72 to 96hours. Also, jet (70 – 90kts wind speed) extending between south Namibia and India Ocean, across south Botswana, Swaziland, south Mozambique and weaken at end forecast.

In the next five days, a low level-wind convergence over Gabon, Congo, DRC, seasonal wind convergence over the Lake Victoria region and Angola, moist easterly flow from the North Indian Ocean and its associated convergence over the Horn of Africa, interaction between mid-latitude and tropical weather systems across Southeast Africa are expected to enhance rainfall in their respective regions. Hence, there is an increased chance for moderate to heavy rainfall over southern Cameroon, Equatorial Guinea, Gabon, Congo, Angola, DRC, the Lake Victoria region, Ethiopia, Somalia, Swaziland, eastern South Africa and Madagascar

2.0. Previous and Current Day Weather Discussion over Africa

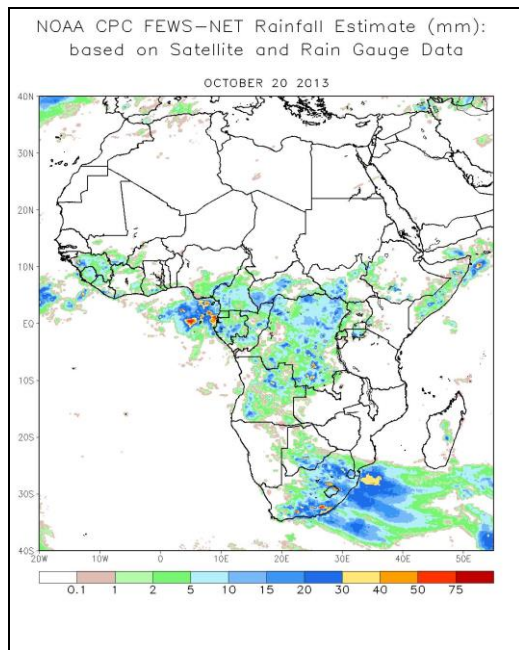
(05 November 2013 – 06 November 2013)

2.1. Weather assessment for the previous day (05 November 2013)

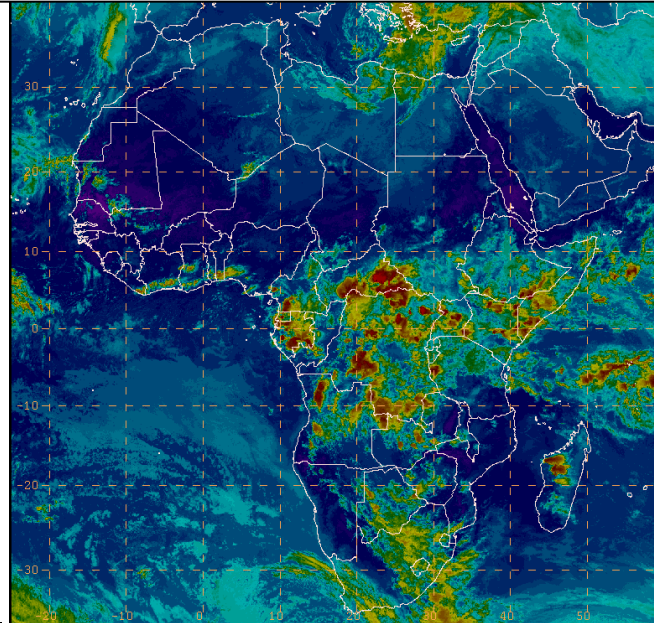
During the previous day, moderate to locally heavy rainfall was observed over Equatorial Guinea, CAR, Congo, Gabon, Cameroon, DRC, Angola, Botswana, South Sudan, Somalia, , South Africa and Lesotho.

2.2. Weather assessment for the current day (06 November 2013)

Intense clouds were observed over Gabon, portions of Central African and the Lake Victoria, the Horn of Africa regions and portions of South Africa and Angola.



IR Satellite Image (valid 18.00Z of 06 November 2013)



Previous day rainfall condition over Africa (top Left) based on the NCEP CPCE/RFE and current day cloud cover (top right) based on IR Satellite image

Author: Domingos Cuaia Quenda, (Centro de Previsao de Tempo-Angola / CPC-African Desk); domingos.quendau@noaa.gov