



# CPC Africa Desk InterTropical (ITF) Front Analysis

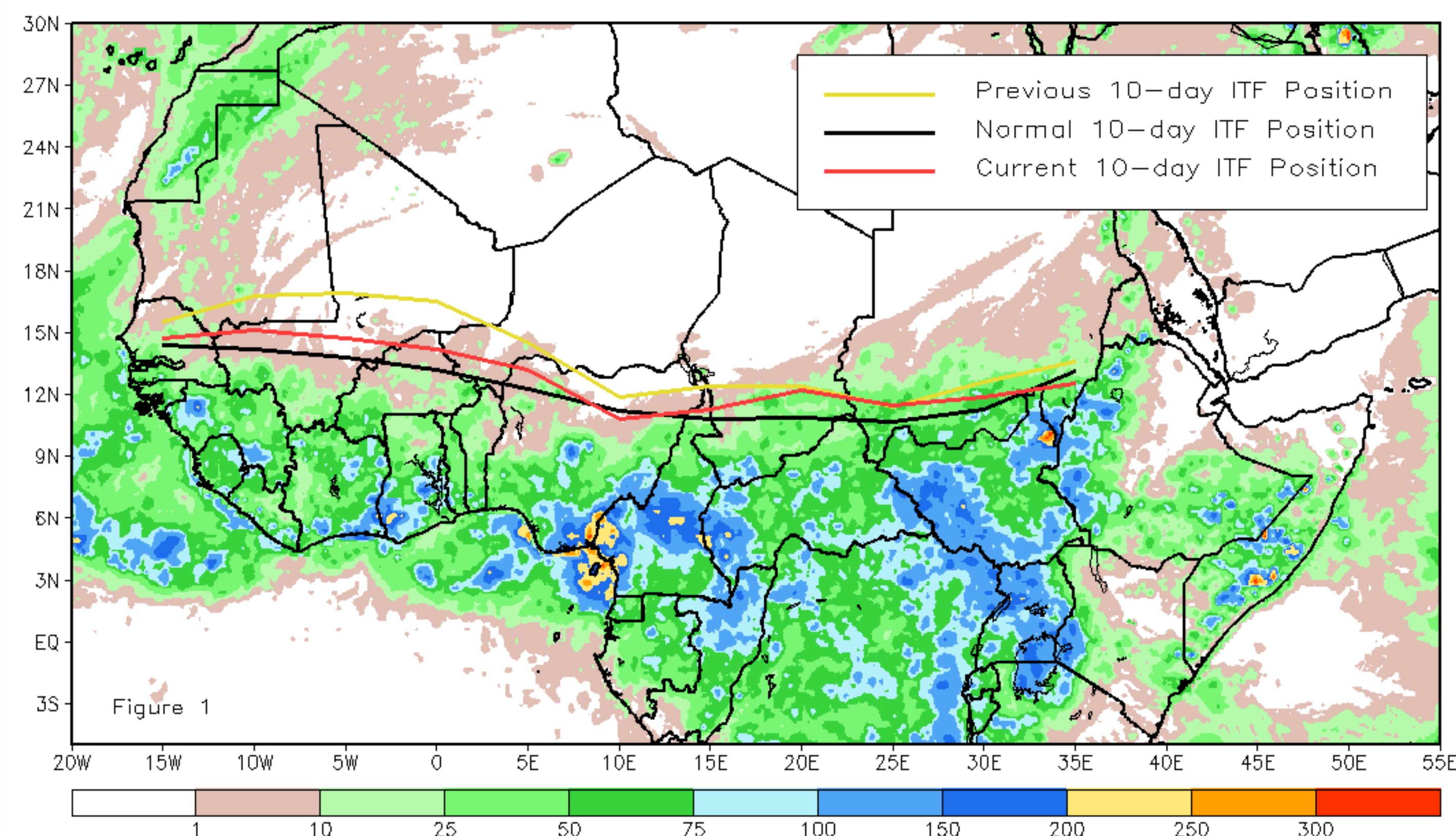
## October 2015, Dekad 3

### Discussion:

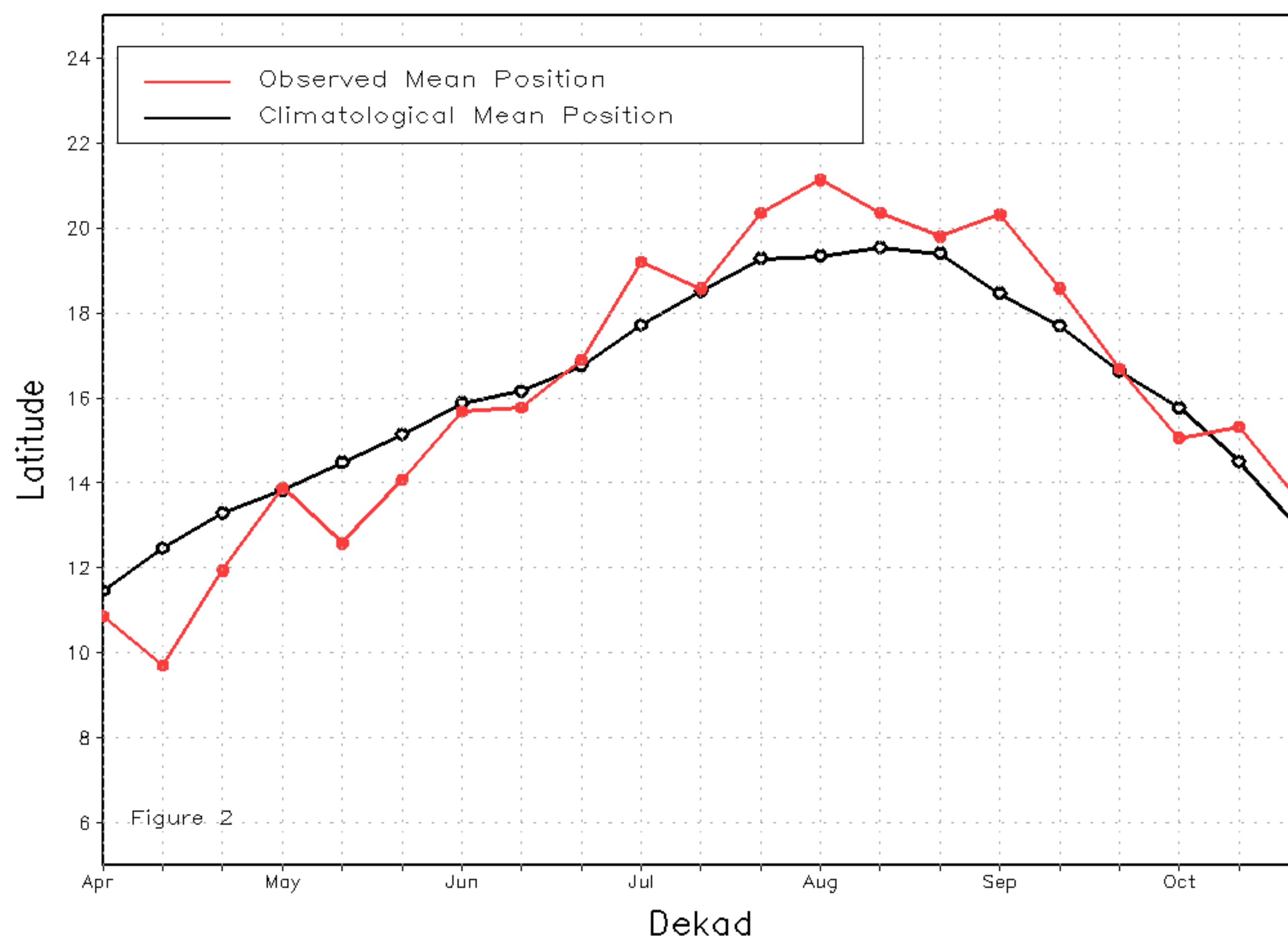
From October 21-31, 2015, the ITF continued its southward movement relative to its position during the previous period. However, both the western and eastern portions of the ITF experienced anomalous northerly positions compared to their respective long-term mean locations. The mean western portion of the ITF was approximated at 13.6N, which was to the north of the average position by 0.7 degree. Also, the mean eastern portion of the ITF was located at 12.0N and was to the north of the mean position by 0.5 degree. The anomalous northerly position of the ITF across Africa resulted in wetter than average conditions throughout much of West Africa and Eastern Africa during the period. Figure 1 shows the current position of the ITF relative to its climatological position during the 3rd dekad of October and its previous position during the 2nd dekad of October. Figures 2 and 3 are time series, illustrating the mean latitudinal values of the western and eastern portion of the ITF, respectively, and their evolutions since April, 2015.

Current vs. Normal Dekadal ITF Position  
and RFE Accumulated Precipitation (mm)

October 2015, Dekad 3



Mean Western Portion of the ITF: Averaged 10W to 10E  
As of: October 2015, Dekad 3



Mean Eastern Portion of the ITF: Averaged 20E to 35E  
As of: October 2015, Dekad 3

