

# Madden-Julian Oscillation: Recent Evolution, Current Status and Predictions



Update prepared by:  
Climate Prediction Center / NCEP  
19 September 2016

# Outline

Overview

Recent Evolution and Current Conditions

MJO Index Information

MJO Index Forecasts

MJO Composites

# Overview

The MJO indices indicated a strengthened MJO signal. The increased signal is related to increased coherence of the measured variables, though uncertainty about the signal maintaining structure while propagating eastward is moderate.

Dynamical model forecasts of the RMM-based MJO index depict a continued signal over the Maritime Continent, though the strength and underlying cause are uncertain. Some models alias westward moving features into the MJO band while others propagate a coherent MJO signal to the western Pacific.

A continued MJO signal is the most likely outcome through Week-1, with greater uncertainty after that. The interplay of the various modes of variability preclude statements about further out in time. Tropical cyclone formation is likely to be enhanced over the western Pacific, and to a lesser extent the Atlantic, through the rest of September.

Additional potential impacts across the global tropics and a discussion for the U.S. are available at:  
<http://www.cpc.ncep.noaa.gov/products/precip/CWlink/ghazards/index.php>

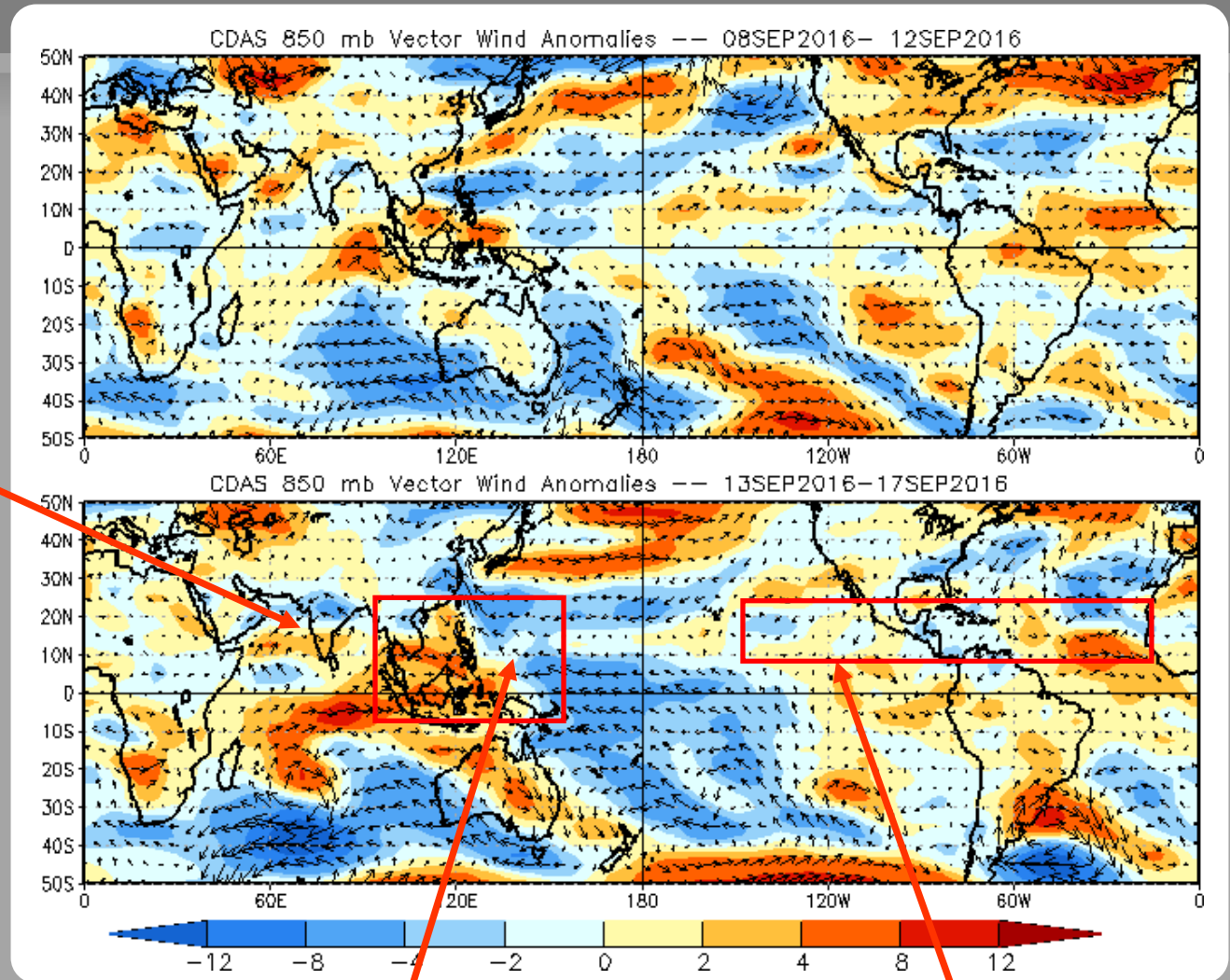
# 850-hPa Vector Wind Anomalies (m s<sup>-1</sup>)

Note that shading denotes the zonal wind anomaly

**Blue shades:** Easterly anomalies

**Red shades:** Westerly anomalies

A low-level cyclonic anomaly developed over India.



Easterly winds built in across the West Pacific while westerly wind anomalies increased over the Maritime Continent.

Anomalies over the East Pacific and Caribbean were weak, while anomalies over the central Atlantic strengthened.

# 850-hPa Zonal Wind Anomalies (m s<sup>-1</sup>)

Westerly anomalies (orange/red shading) represent anomalous west-to-east flow

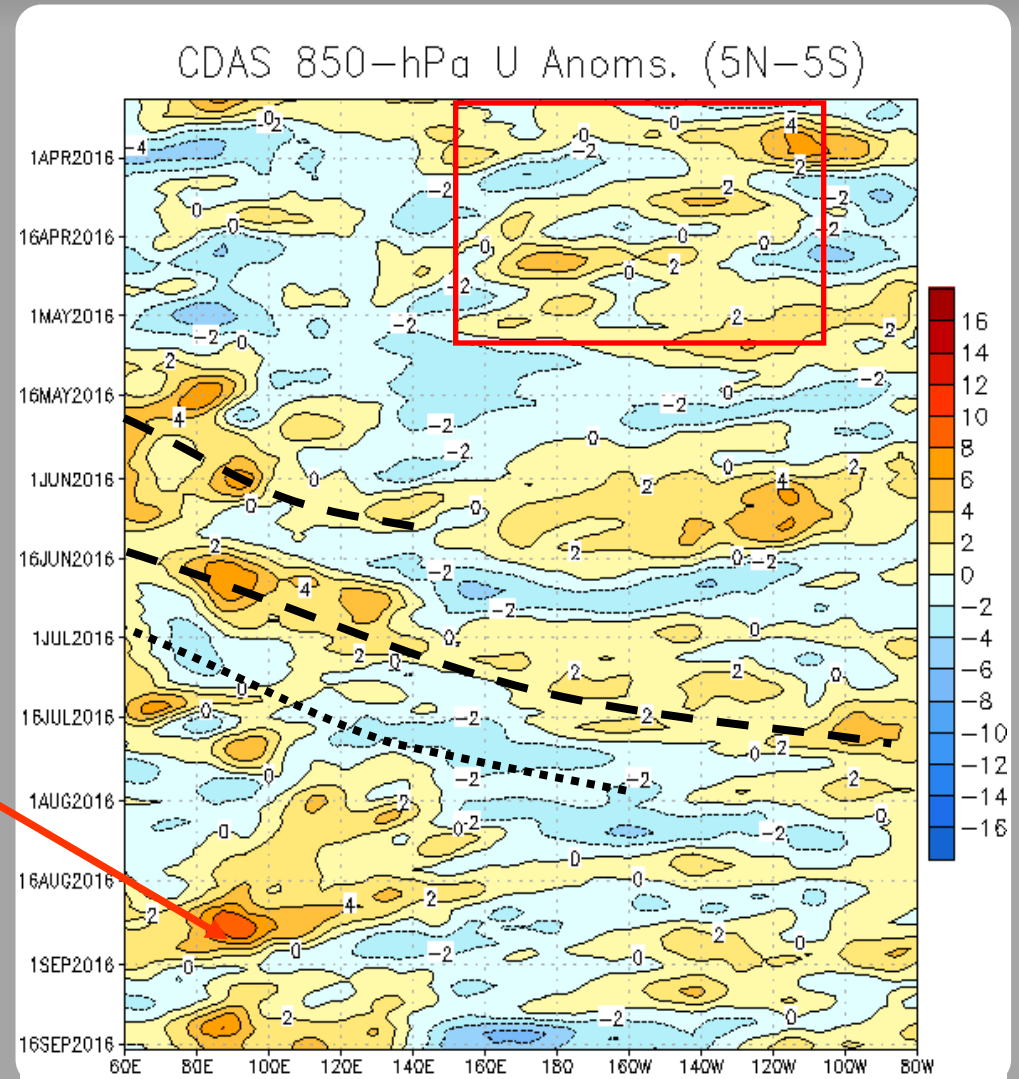
Easterly anomalies (blue shading) represent anomalous east-to-west flow

The red box highlights the persistent low-frequency westerly wind anomalies associated with the 2015-2016 El Niño background state.

During April, the wind field became less coherent as El Niño conditions weakened. During May and June, westerly anomalies were persistent over the Indian Ocean (IO), with higher frequency modes periodically propagating across the Pacific.

During late August, westerly anomalies were evident across the IO and western Pacific.

During early September, anomalies increased in strength while the pattern has remained relatively spatially stationary.



# OLR Anomalies - Past 30 days

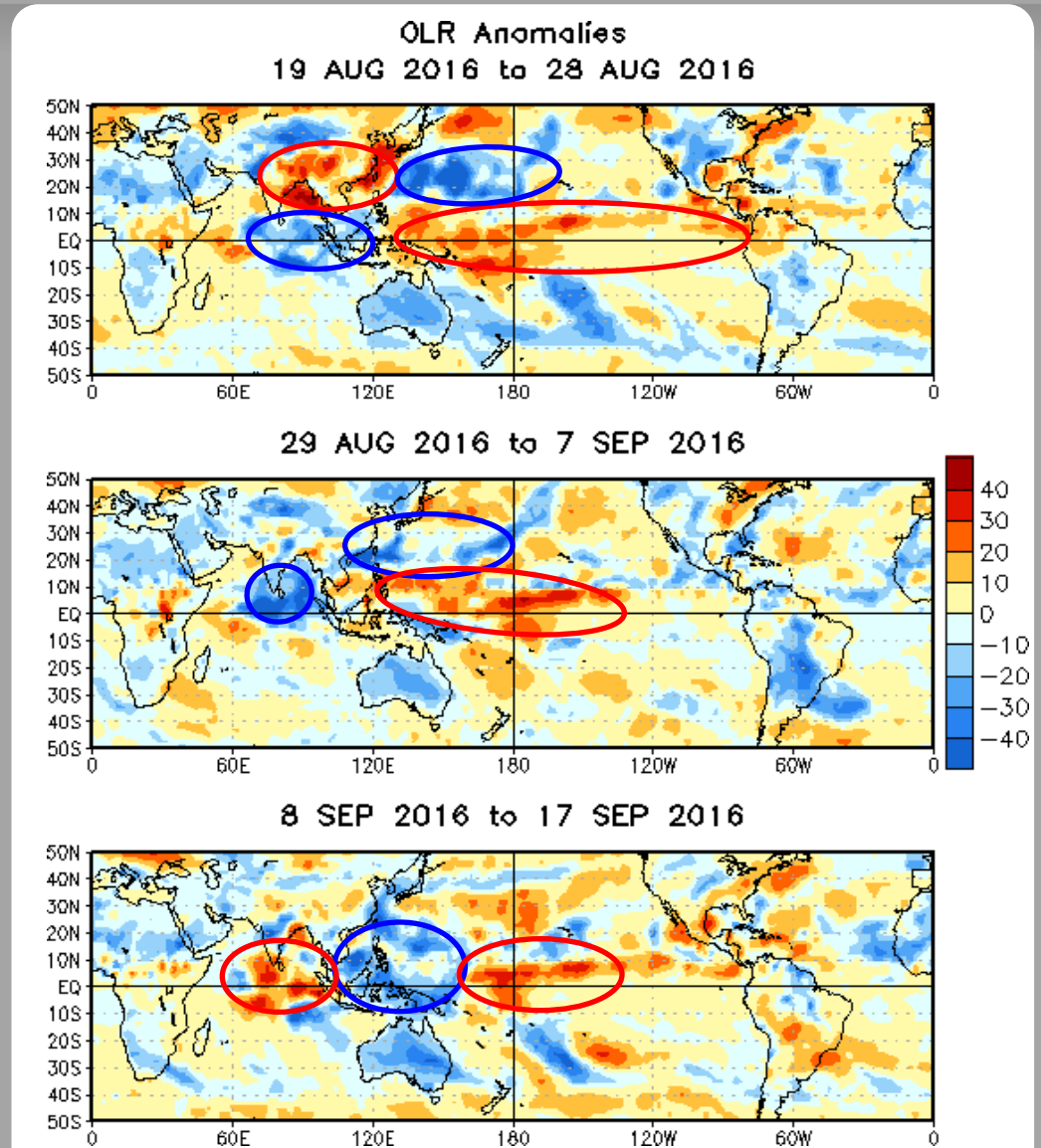
Drier-than-normal conditions, positive OLR anomalies (yellow/red shading)

Wetter-than-normal conditions, negative OLR anomalies (blue shading)

During mid- to late August, convection built over the eastern Indian Ocean and remained below average over much of the Pacific. The monsoon trough remained displaced to the north.

From late August to early September, convection remained suppressed (enhanced) over central Pacific (eastern Indian Ocean). Activity in the northward displaced monsoon trough waned slightly.

During mid-September, convection over the central Pacific remained below average while convection developed (waned) over the Maritime Continent (eastern Indian Ocean).



# Outgoing Longwave Radiation (OLR) Anomalies (2.5°N - 17.5°N)

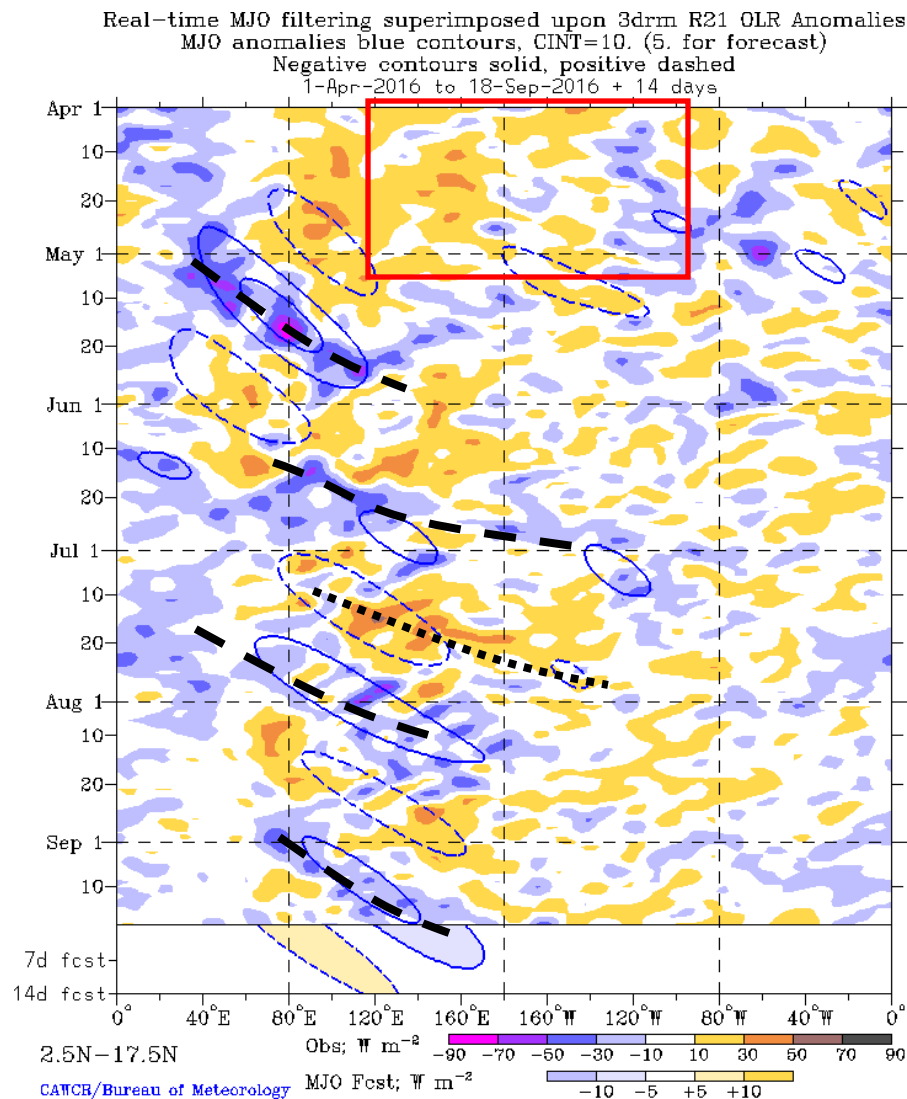
Drier-than-normal conditions, positive OLR anomalies (yellow/red shading)

Wetter-than-normal conditions, negative OLR anomalies (blue shading)

The 2015-2016 El Niño background state is observed (red box) as a dipole of anomalous convection extending from the Maritime Continent to the East Pacific. The signal weakened steadily through boreal Spring.

During early May, an eastward-propagating convective envelope associated with the MJO developed east of the Prime Meridian. During June and July, multiple eastward moving envelopes of enhanced convection were evident, with impacts from tropical cyclones evident into August.

During September, an eastward moving envelope is evident, likely linked to emerging intraseasonal activity.



# 200-hPa Velocity Potential Anomalies (5°S - 5°N)

Positive anomalies (brown shading) indicate unfavorable conditions for precipitation

Negative anomalies (green shading) indicate favorable conditions for precipitation

The 2015-16 El Niño background state is highlighted by the red box, showing anomalous divergence over the central and eastern Pacific.

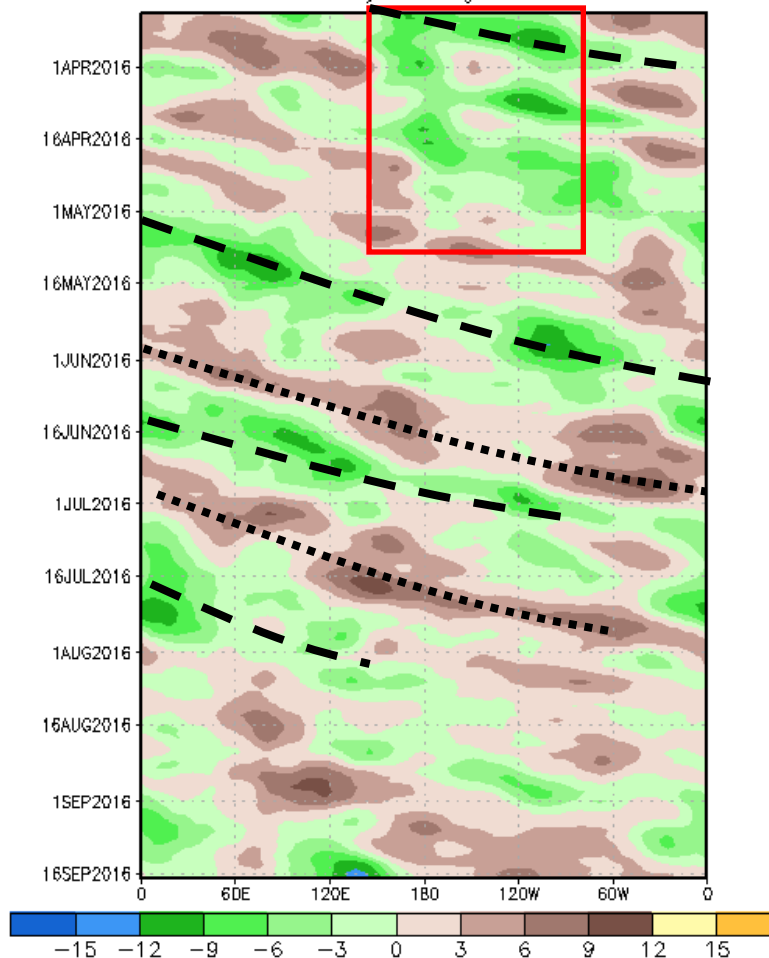
The upper-level velocity potential pattern became less coherent as El Niño waned during April.

From May through early August, an eastward propagating signal was evident, with multiple periods of variability apparent.

During August, the intraseasonal signal became less coherent, with a weaker and somewhat more stationary anomaly field in place. By late August & early September, the intraseasonal signal depicts renewed propagation.

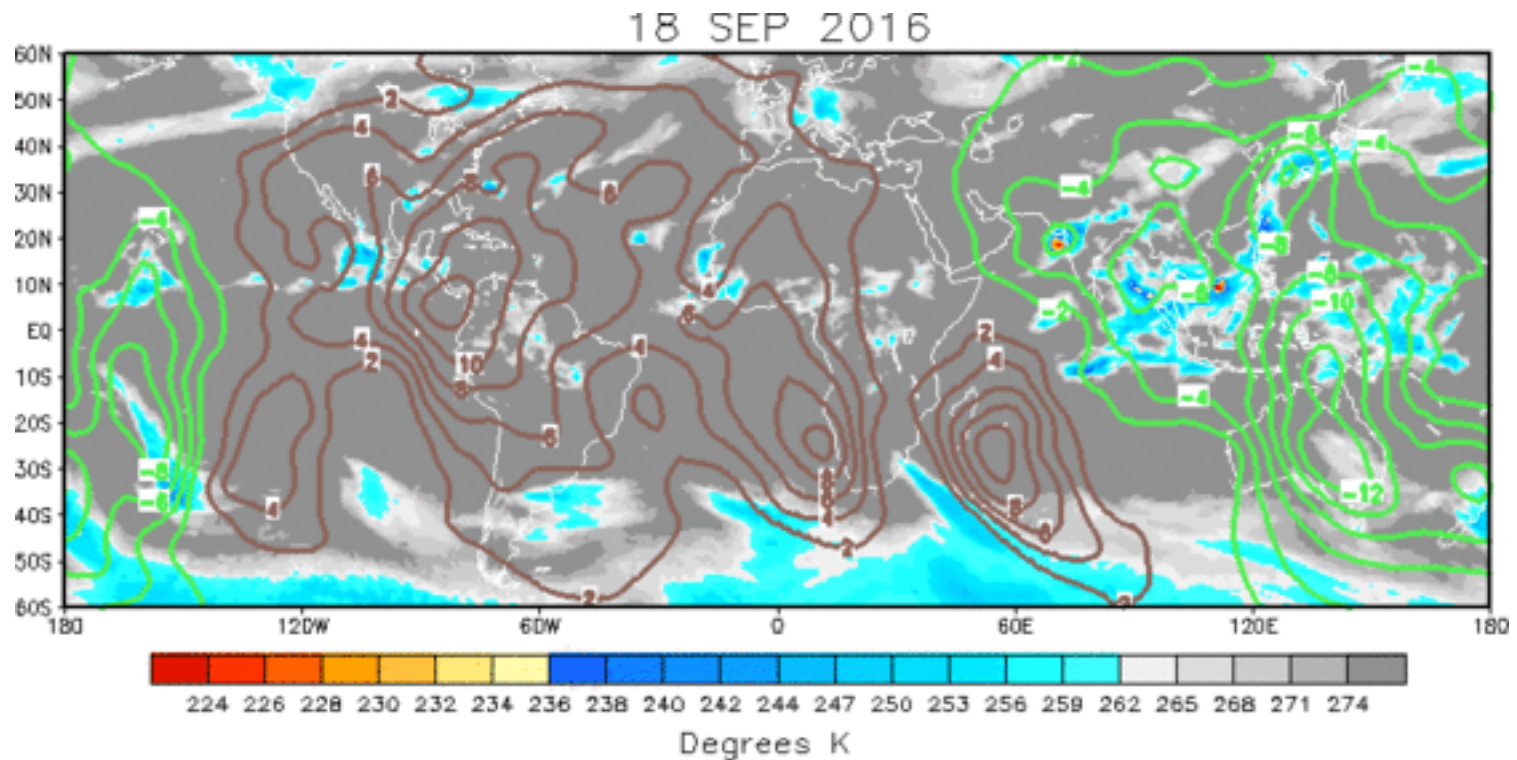
Recently, anomalies are intensifying with eastward propagation evident in part of the signal.

200-hPa Velocity Potential Anomaly: 5N-5S  
5-day Running Mean





# IR Temperatures (K) / 200-hPa Velocity Potential Anomalies



The upper-level velocity potential anomaly field depicts a wave-1 structure with enhanced (suppressed) convection is generally favored from, the Indian Ocean to the Central Pacific (East Pacific to Africa).

Positive anomalies (brown contours) indicate unfavorable conditions for precipitation

Negative anomalies (green contours) indicate favorable conditions for precipitation

# 200-hPa Vector Wind Anomalies (m s<sup>-1</sup>)

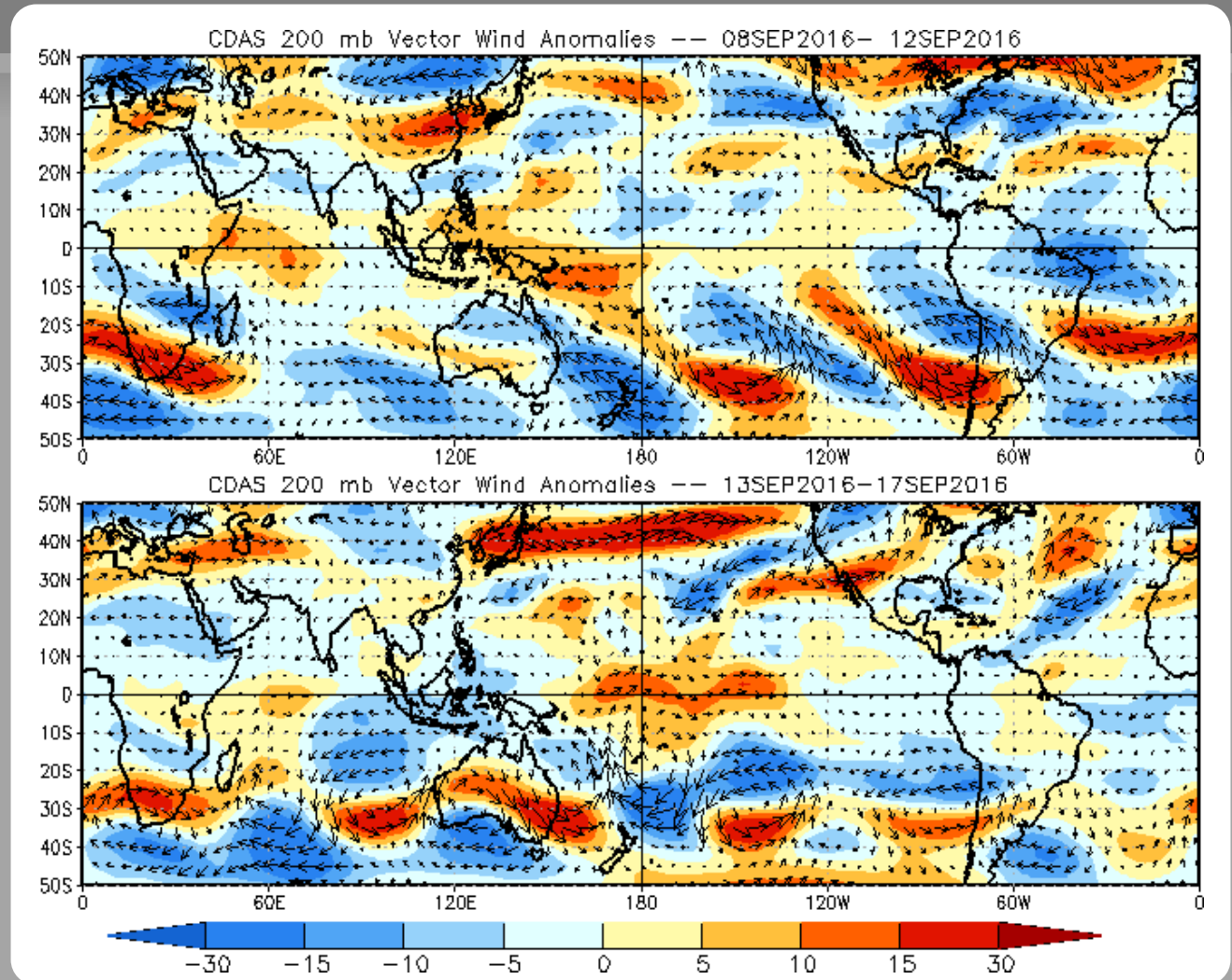
Note that shading denotes the zonal wind anomaly

**Blue shades:** Easterly anomalies

**Red shades:** Westerly anomalies

Easterly anomalies developed over the Indian Ocean while westerly anomalies built in over the Pacific, near the Date Line.

An enhanced jet is evident east of Japan and an anomalous trough is evident near Hawaii.



# 200-hPa Zonal Wind Anomalies (m s<sup>-1</sup>)

Westerly anomalies (orange/red shading) represent anomalous west-to-east flow

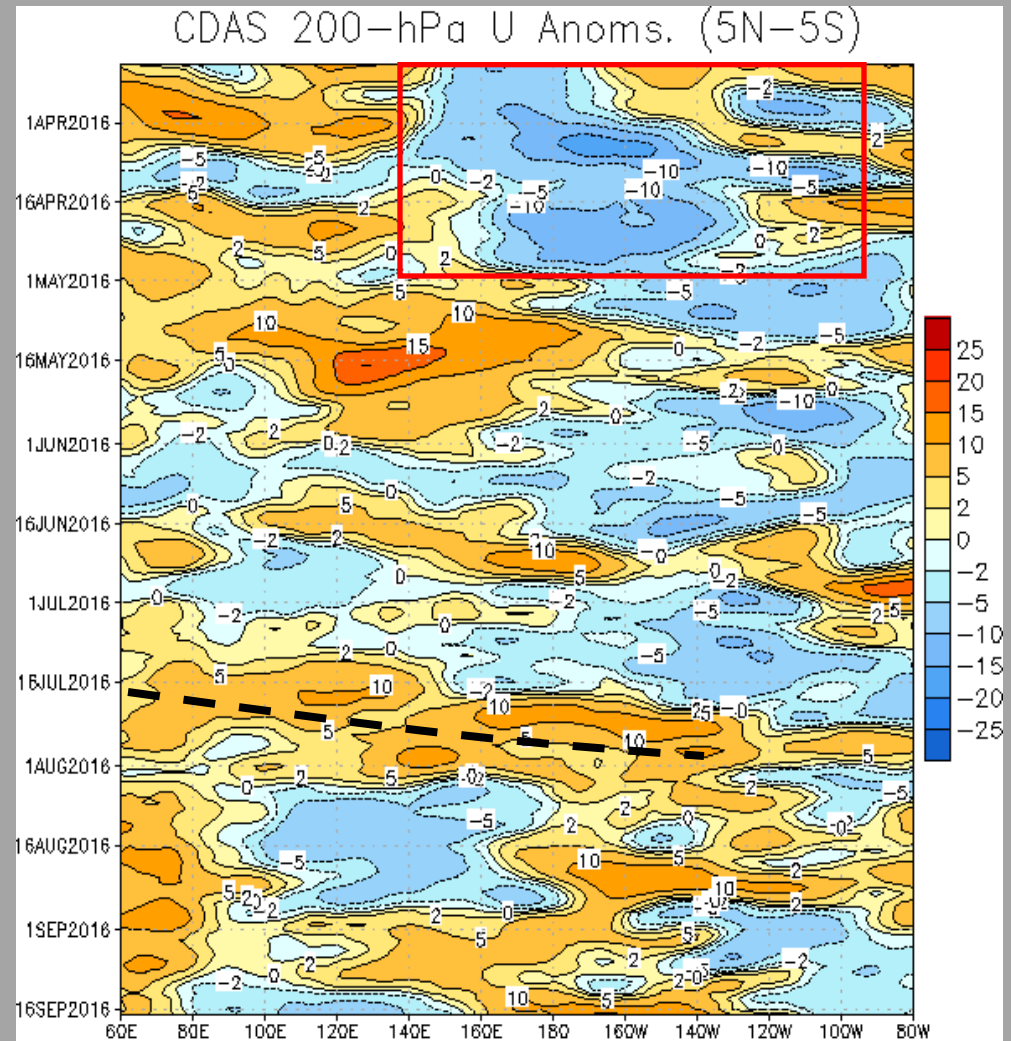
Easterly anomalies (blue shading) represent anomalous east-to-west flow

Easterly anomalies persisted over the central and eastern Pacific from June 2015 to May 2016 associated with El Niño (red box). Corresponding westerly anomalies persisted over the Maritime Continent.

During May, westerly anomalies expanded eastward to the Date Line. Faster modes were evident in the upper-level wind field.

During July, some eastward propagation in large scale anomalies are evident, although the spatial consistency implies higher frequency variability than expected with MJO activity. During August and early September, the pattern became relatively stationary, then reversed during early September.

Recently, the pattern has reverted back, with easterly anomalies over the Maritime Continent.



# Weekly Heat Content Evolution in the Equatorial Pacific

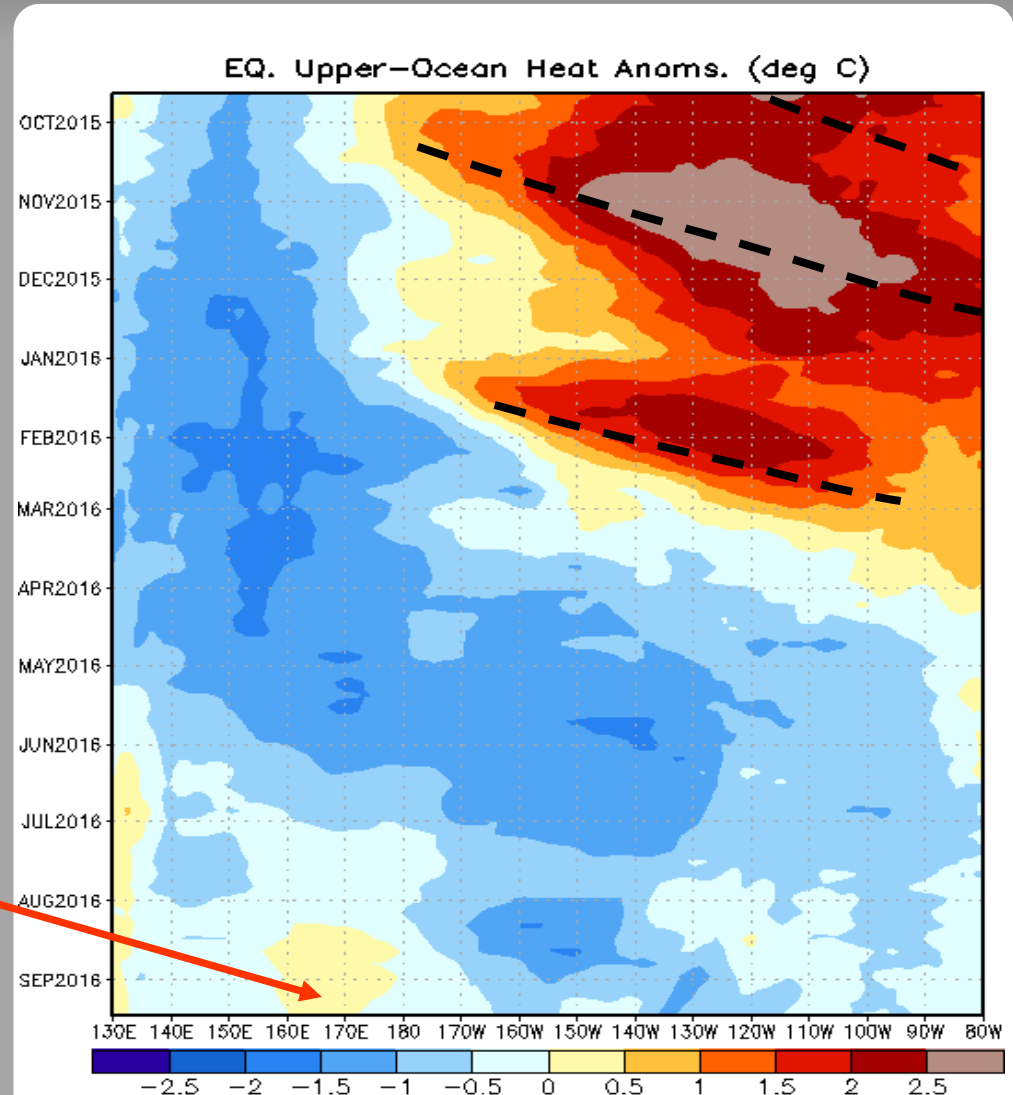
Oceanic Kelvin waves have alternating warm and cold phases. The warm phase is indicated by dashed lines. Downwelling and warming occur in the leading portion of a Kelvin wave, and upwelling and cooling occur in the trailing portion.

Reinforcing downwelling events were observed during late 2015, resulting in persistently above-normal heat content from the DL to 80W over that period.

An eastward expansion of below average heat content over the western Pacific is evident since January, with widespread negative anomalies building across the Pacific.

Strongest negative anomalies now persist over the east-central Pacific.

Some positive oceanic heat anomalies remain just west of the Date Line and in the vicinity of the Maritime Continent.



# MJO Index -- Information

The MJO index illustrated on the next several slides is the CPC version of the Wheeler and Hendon index (2004, hereafter WH2004).

Wheeler M. and H. Hendon, 2004: An All-Season Real-Time Multivariate MJO Index: Development of an Index for Monitoring and Prediction, *Monthly Weather Review*, 132, 1917-1932.

The methodology is very similar to that described in WH2004 but does not include the linear removal of ENSO variability associated with a sea surface temperature index. The methodology is consistent with that outlined by the U.S. CLIVAR MJO Working Group.

Gottschalck et al. 2010: A Framework for Assessing Operational Madden-Julian Oscillation Forecasts: A CLIVAR MJO Working Group Project, *Bull. Amer. Met. Soc.*, 91, 1247-1258.

The index is based on a combined Empirical Orthogonal Function (EOF) analysis using fields of near-equatorially-averaged 850-hPa and 200-hPa zonal wind and outgoing longwave radiation (OLR).

# MJO Index - Recent Evolution

The axes (RMM1 and RMM2) represent daily values of the principal components from the two leading modes

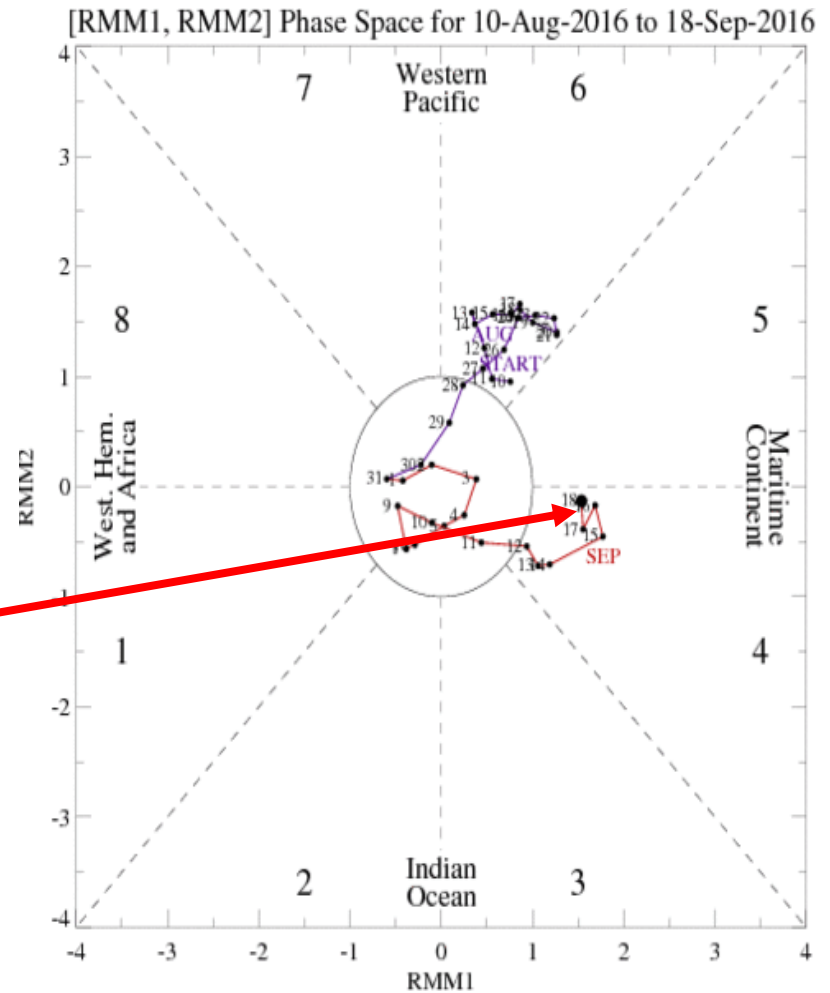
The triangular areas indicate the location of the enhanced phase of the MJO

Counter-clockwise motion is indicative of eastward propagation. Large dot most recent observation.

Distance from the origin is proportional to MJO strength

Line colors distinguish different months

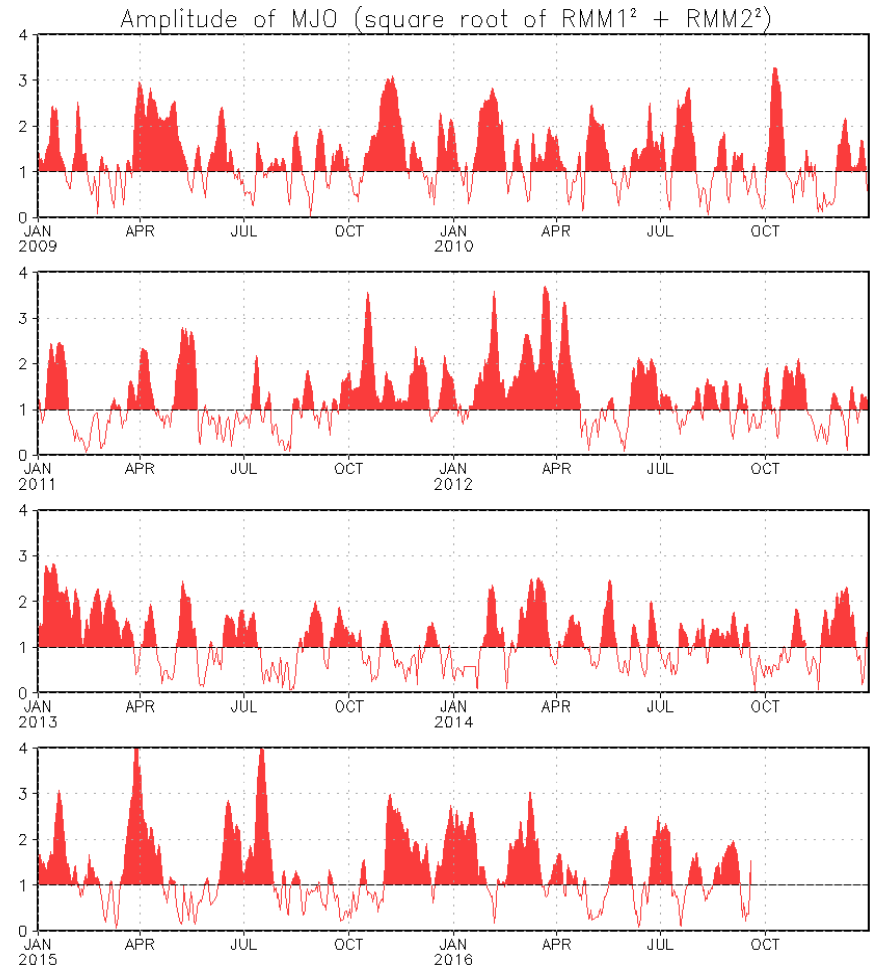
The RMM index indicates a recent strengthening of the signal over the Maritime Continent.



# MJO Index - Historical Daily Time Series

Time series of daily MJO index amplitude for the last few years.

Plot puts current MJO activity in recent historical context.



# Ensemble GFS (GEFS) MJO Forecast

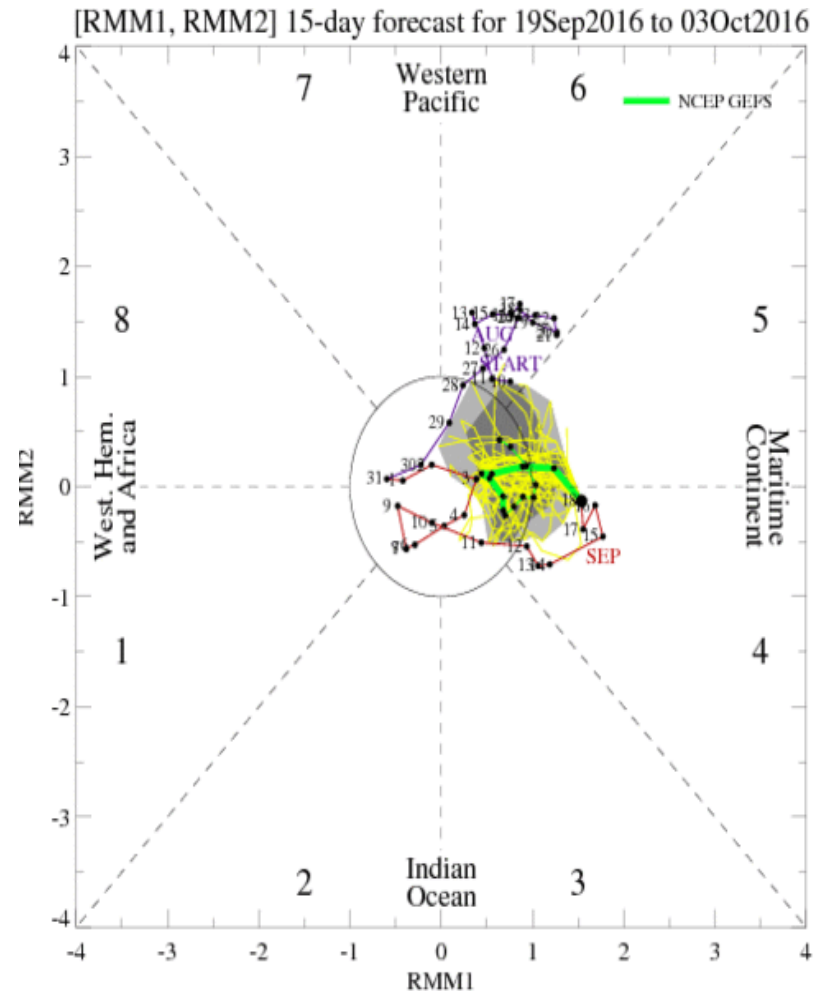
RMM1 and RMM2 values for the most recent 40 days and forecasts from the ensemble Global Forecast System (GEFS) for the next 15 days

light gray shading: 90% of forecasts

dark gray shading: 50% of forecasts

The GFS ensemble forecasts indicate a weakening of the signal during week-1, with a re-emergence in the second week.

Yellow Lines - 20 Individual Members  
Green Line - Ensemble Mean

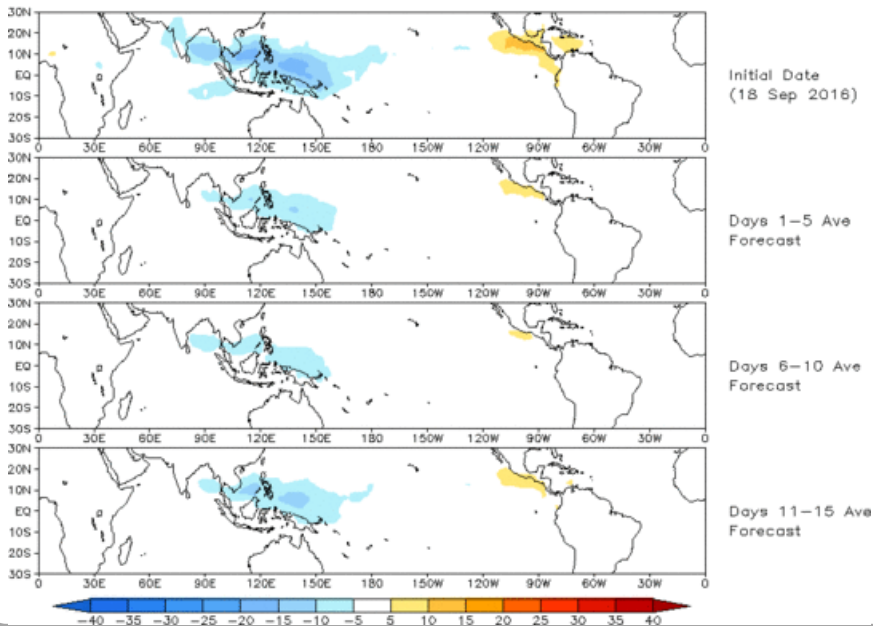




# Ensemble GFS (GEFS) MJO Forecast

Spatial map of OLR anomalies for the next 15 days

Prediction of MJO-related anomalies using GEFS operational forecast  
Initial date: 18 Sep 2016  
OLR

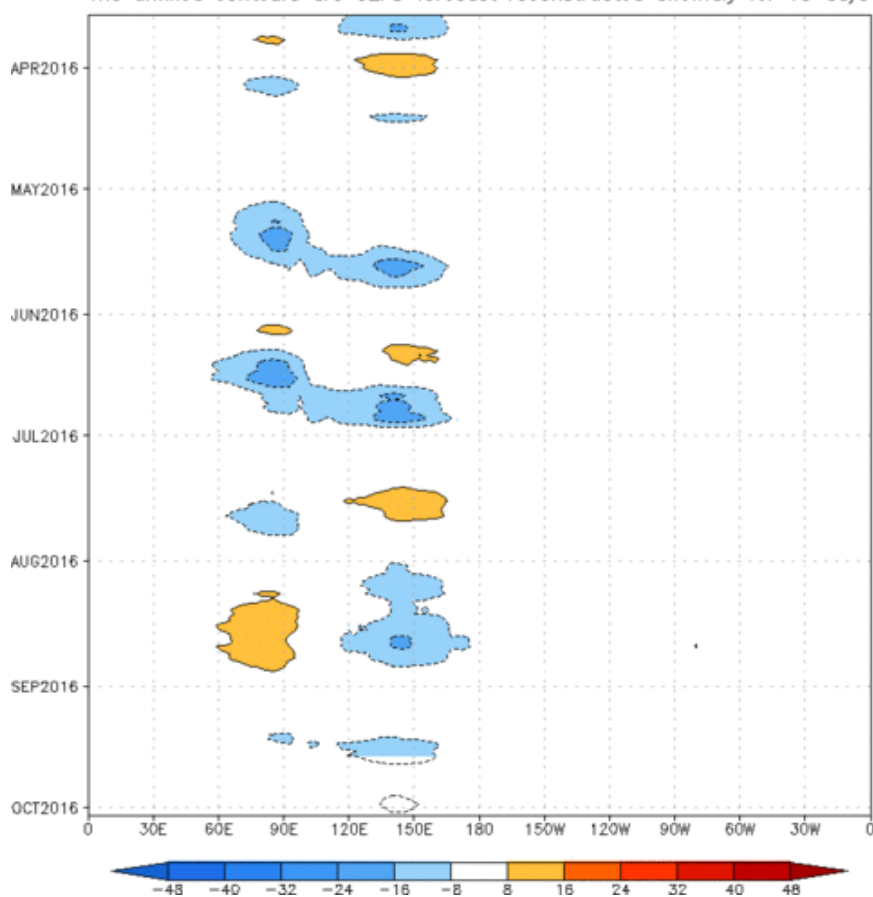


The GEFS RMM Index forecast based OLR anomalies depict a weakening but eastward propagating signal in the first 10 days, with some strengthening in the last few days.

Figures below show MJO associated OLR anomalies only (reconstructed from RMM1 and RMM2) and do not include contributions from other modes (*i.e.*, ENSO, monsoons, etc.)

Time-longitude section of (7.5° S-7.5° N) OLR anomalies - last 180 days and for the next 15 days

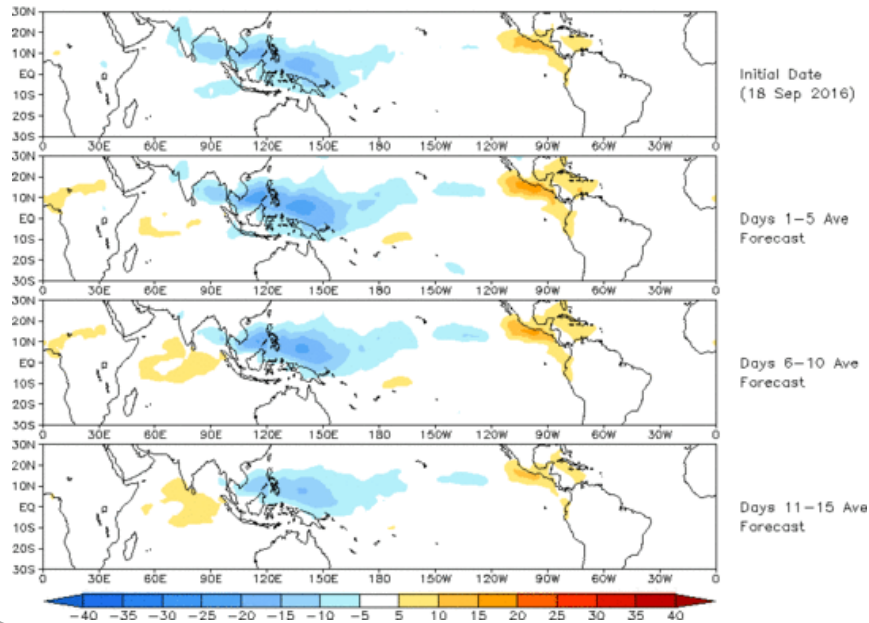
Reconstructed anomaly field associated with the MJO using RMM1 & RMM2  
OLR [7.5°S,7.5°N] (cont:4Wm<sup>-2</sup>) Period:19-Mar-2016 to 18-Sep-2016  
The unfilled contours are GEFS forecast reconstructed anomaly for 15 days



# Constructed Analog (CA) MJO Forecast

Spatial map of OLR anomalies for the next 15 days

OLR prediction of MJO-related anomalies using CA model reconstruction by RMM1 & RMM2 (18 Sep 2016)

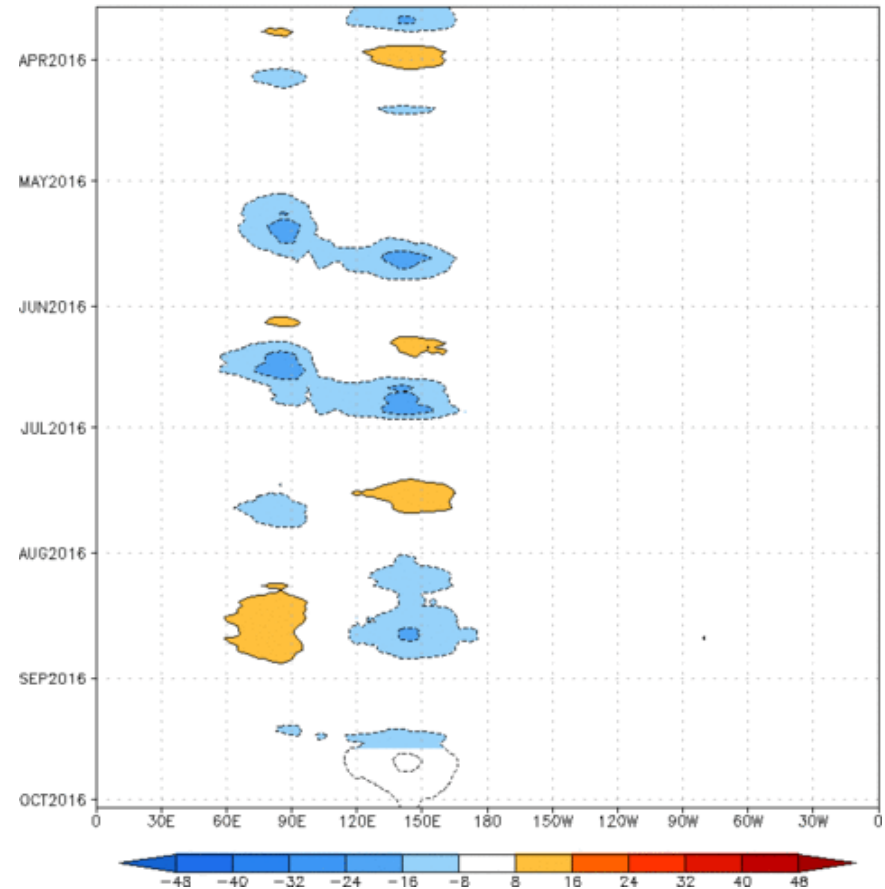


The Constructed Analog (CA) model predicts a slow eastward movement of the MJO related signal, with slight weakening near the end of week-2.

Figures below show MJO associated OLR anomalies only (reconstructed from RMM1 and RMM2) and do not include contributions from other modes (*i.e.*, ENSO, monsoons, etc.)

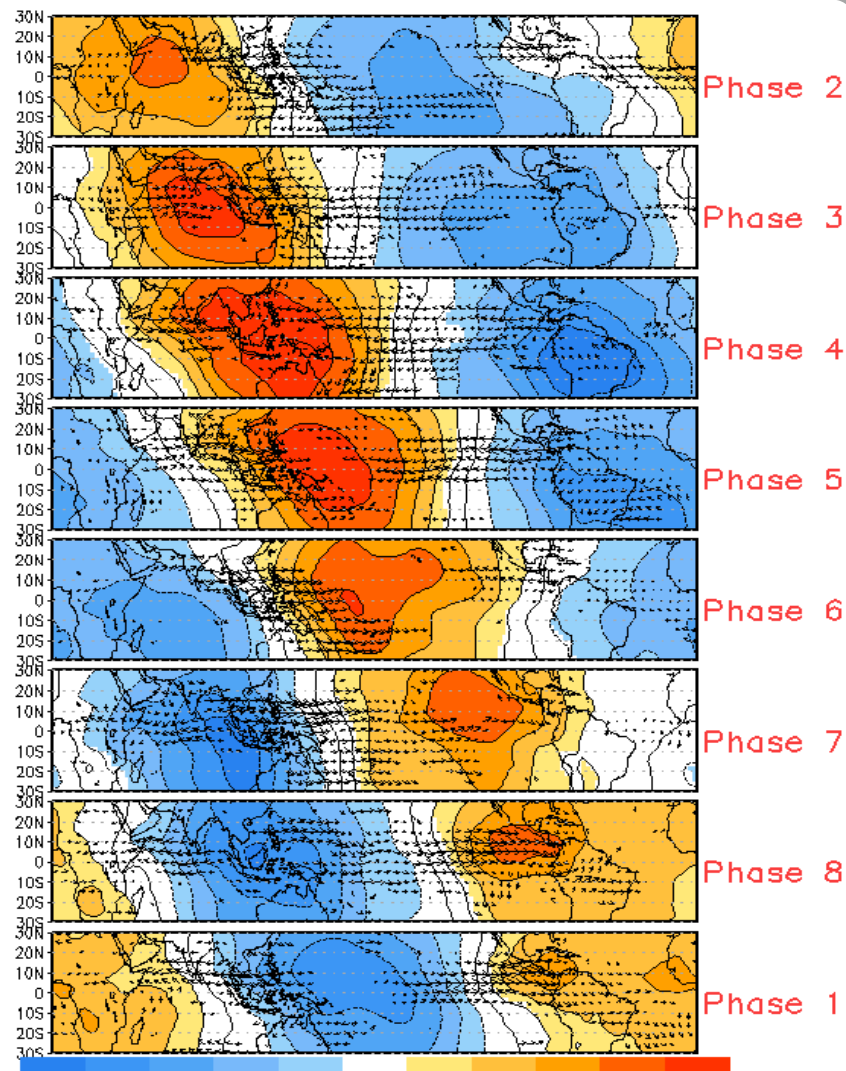
Time-longitude section of (7.5° S-7.5° N) OLR anomalies - last 180 days and for the next 15 days

Reconstructed anomaly field associated with the MJO using RMM1 & RMM2 OLR [7.5°S,7.5°N] (cont:4Wm<sup>-2</sup>) Period:19-Mar-2016 to 18-Sep-2016  
The unfilled contours are CA forecast reconstructed anomaly for 15 days

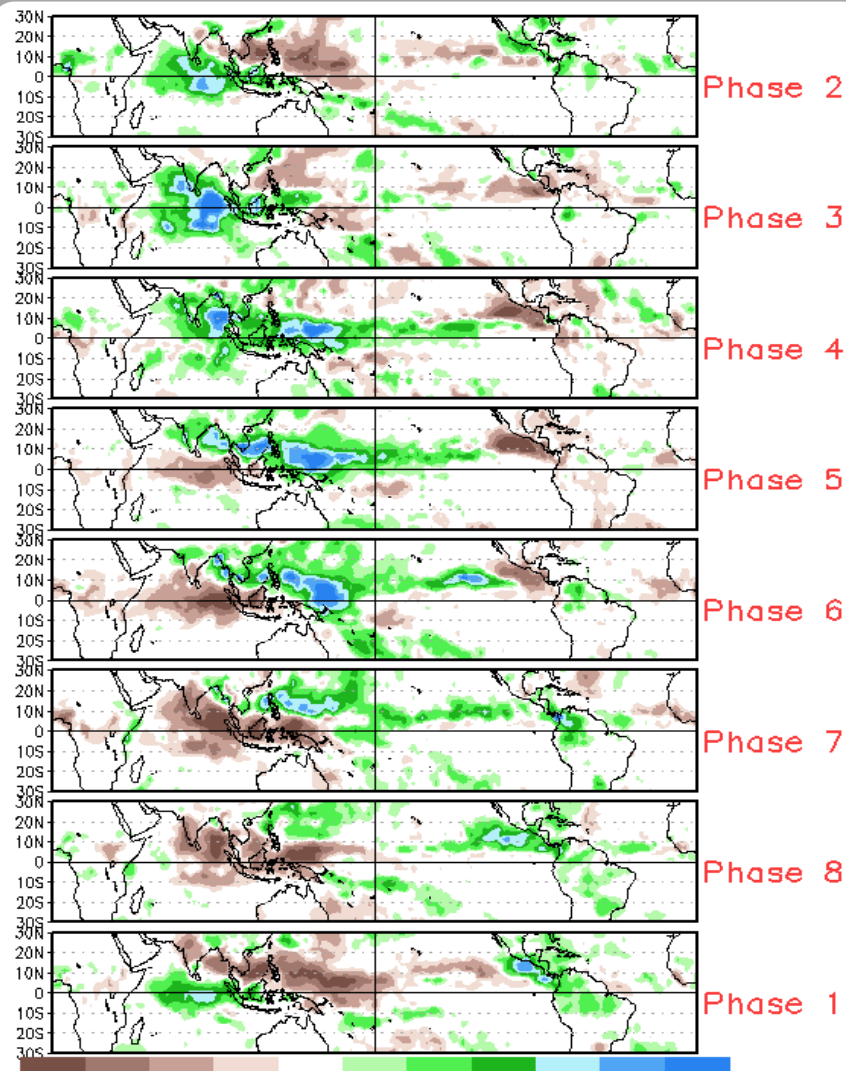


# MJO Composites - Global Tropics

850-hPa Velocity Potential and  
Wind Anomalies (May - Sep)



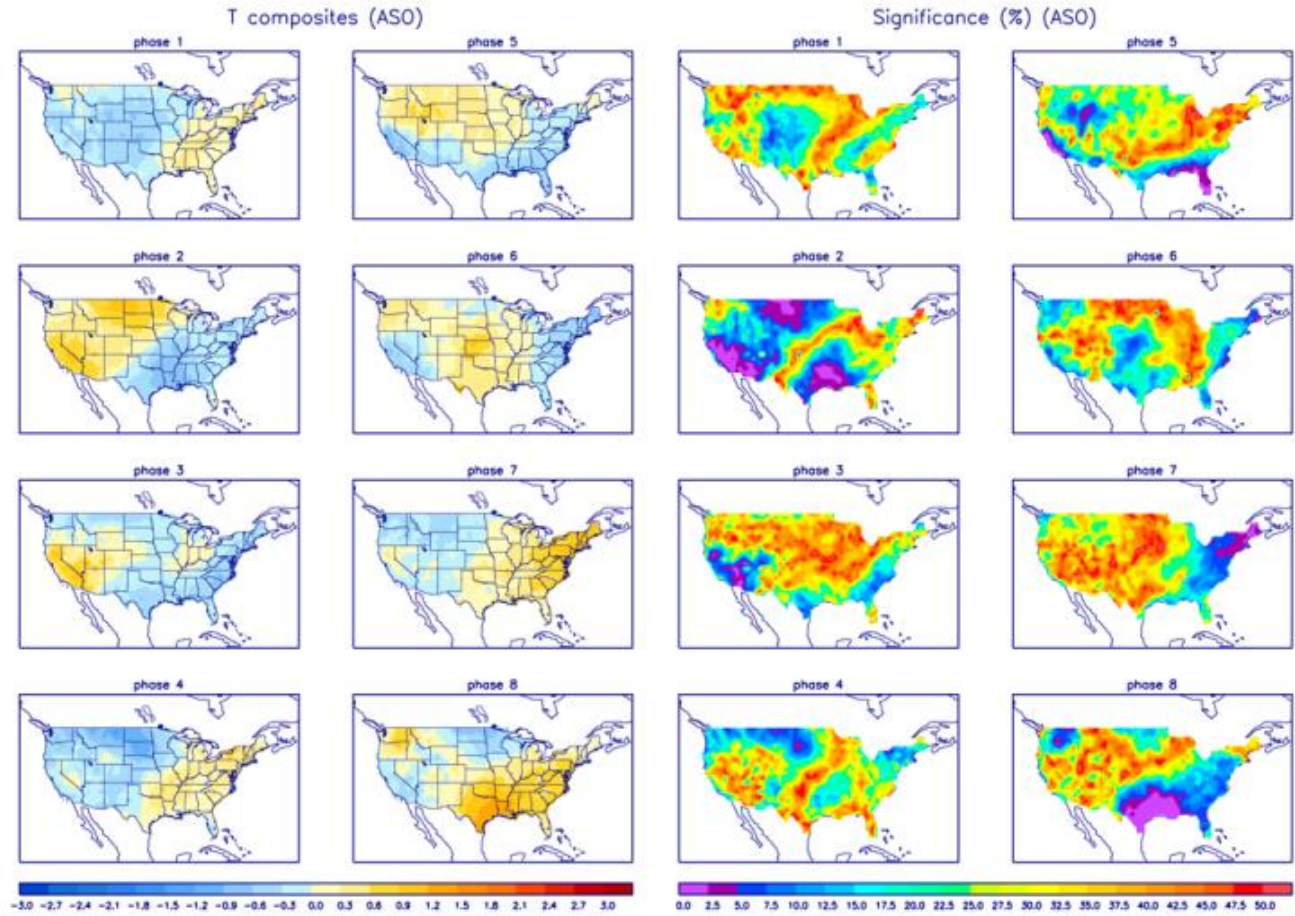
Precipitation Anomalies (May - Sep)



# U.S. MJO Composites - Temperature

Left hand side plots show temperature anomalies by MJO phase for MJO events that have occurred over the three month period in the historical record. Blue (orange) shades show negative (positive) anomalies respectively.

Right hand side plots show a measure of significance for the left hand side anomalies. Purple shades indicate areas in which the anomalies are significant at the 95% or better confidence level.



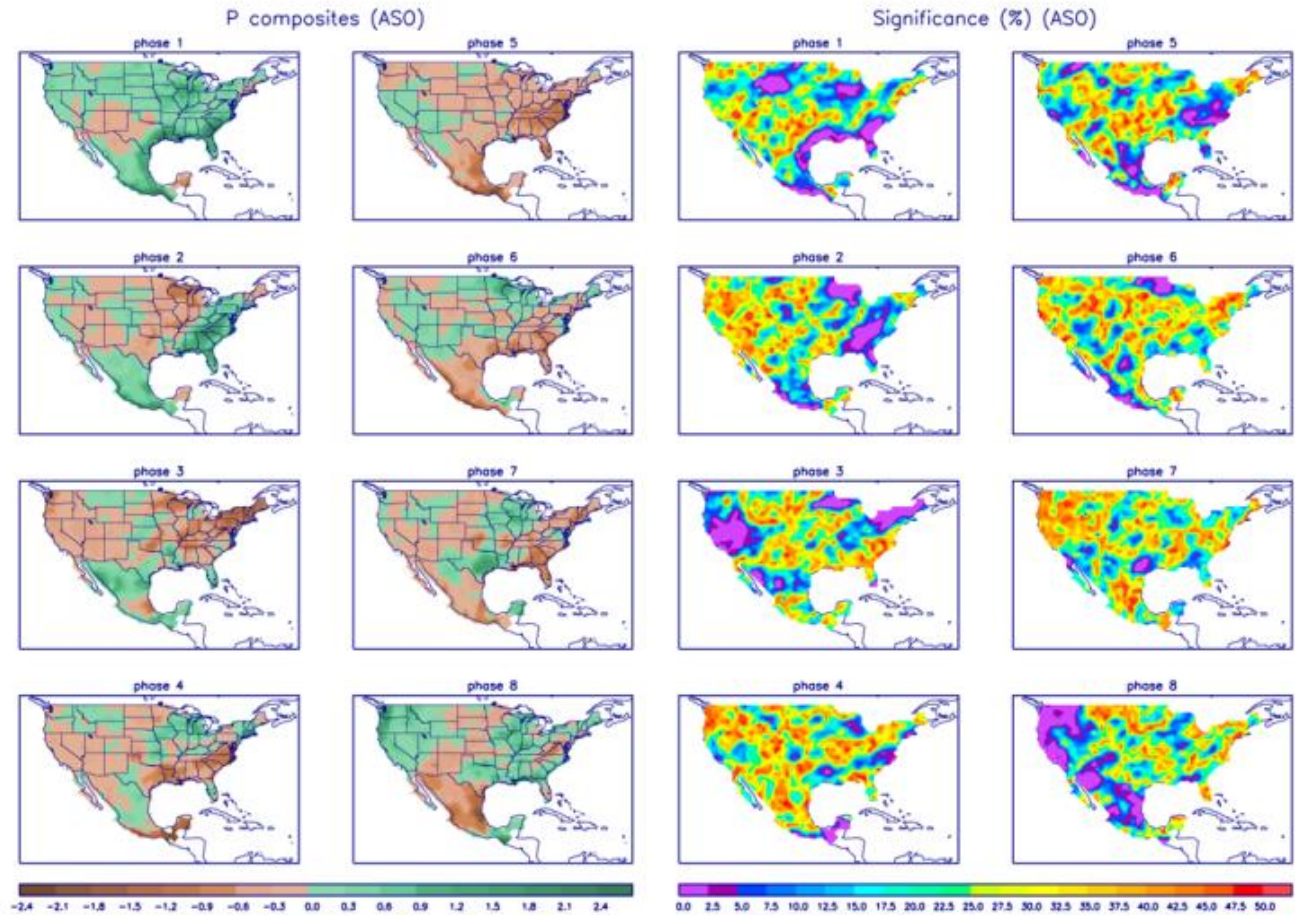
Zhou et al. (2011): A composite study of the MJO influence on the surface air temperature and precipitation over the Continental United States, *Climate Dynamics*, 1-13, doi: 10.1007/s00382-011-1001-9

<http://www.cpc.ncep.noaa.gov/products/precip/CWlink/MJO/mjo.shtml>

# U.S. MJO Composites - Precipitation

Left hand side plots show precipitation anomalies by MJO phase for MJO events that have occurred over the three month period in the historical record. Brown (green) shades show negative (positive) anomalies respectively.

Right hand side plots show a measure of significance for the left hand side anomalies. Purple shades indicate areas in which the anomalies are significant at the 95% or better confidence level.



Zhou et al. (2011): A composite study of the MJO influence on the surface air temperature and precipitation over the Continental United States, *Climate Dynamics*, 1-13, doi: 10.1007/s00382-011-1001-9

<http://www.cpc.ncep.noaa.gov/products/precip/CWlink/MJO/mjo.shtml>