

Global Tropics Hazards And Benefits Outlook

November 27, 2012

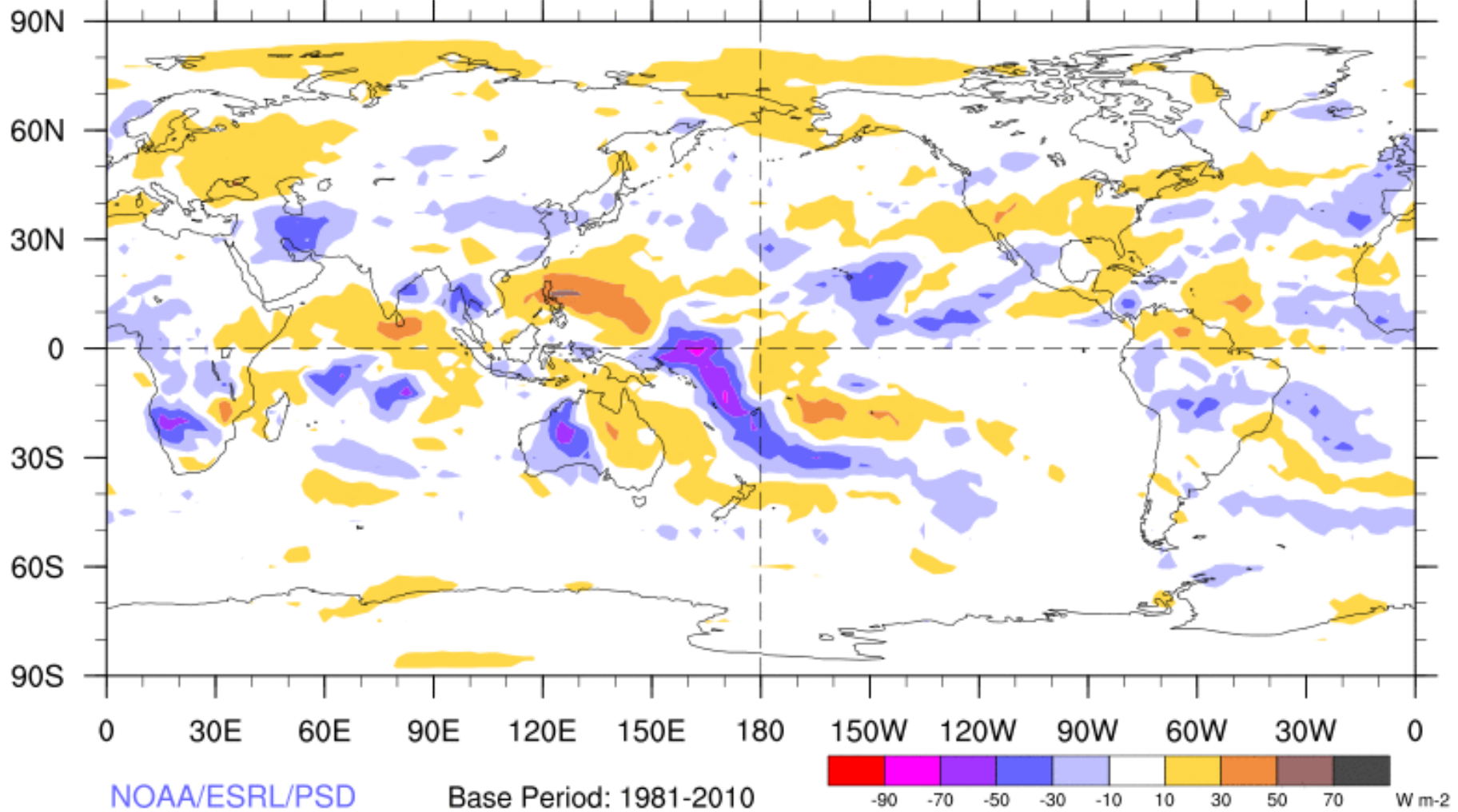
Stephen Baxter

Outline

1. Review of Recent Conditions
2. Synopsis of Climate Modes
3. GTH Outlook and Forecast Discussion

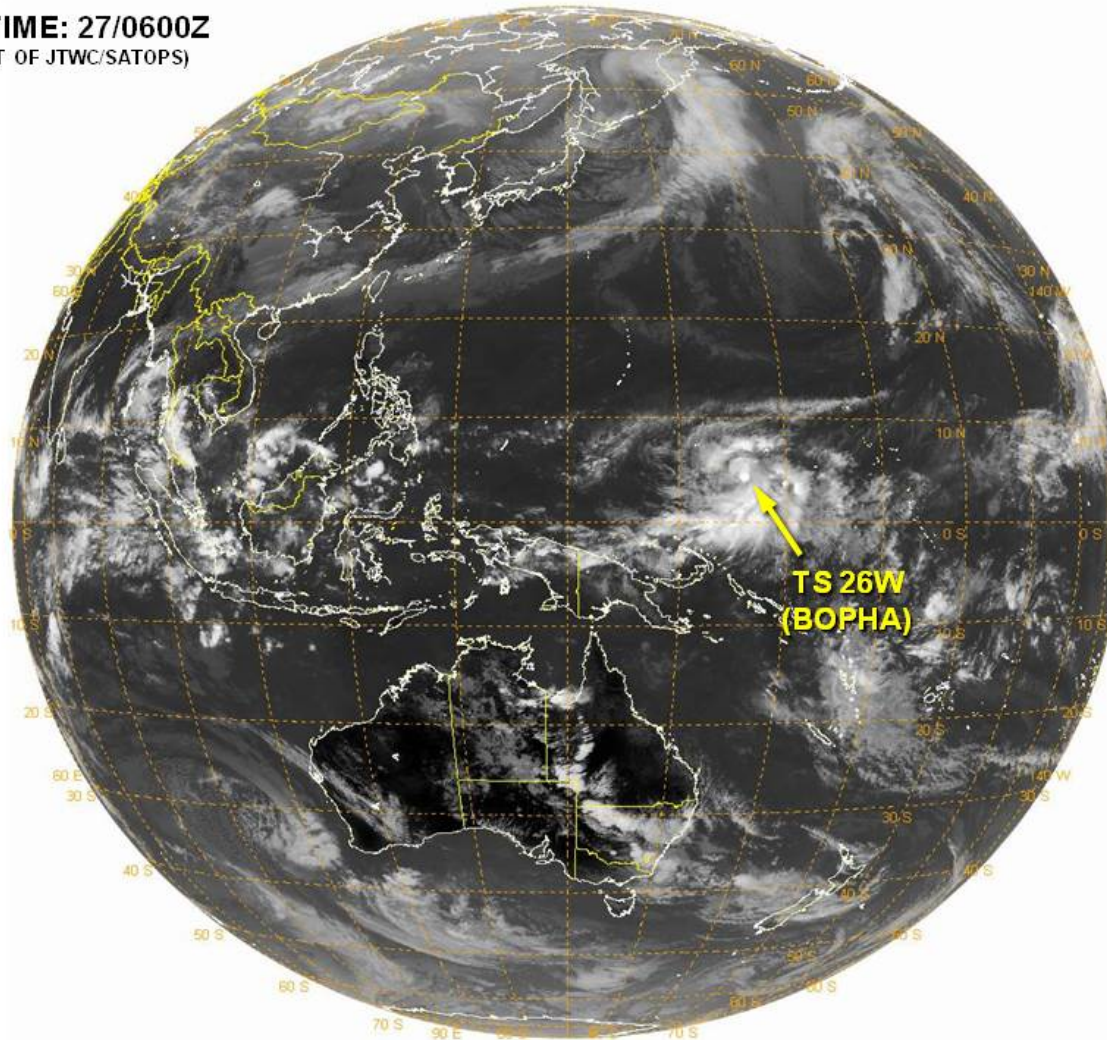
7-Day Average OLR Anomaly

2012/11/19 - 2012/11/25

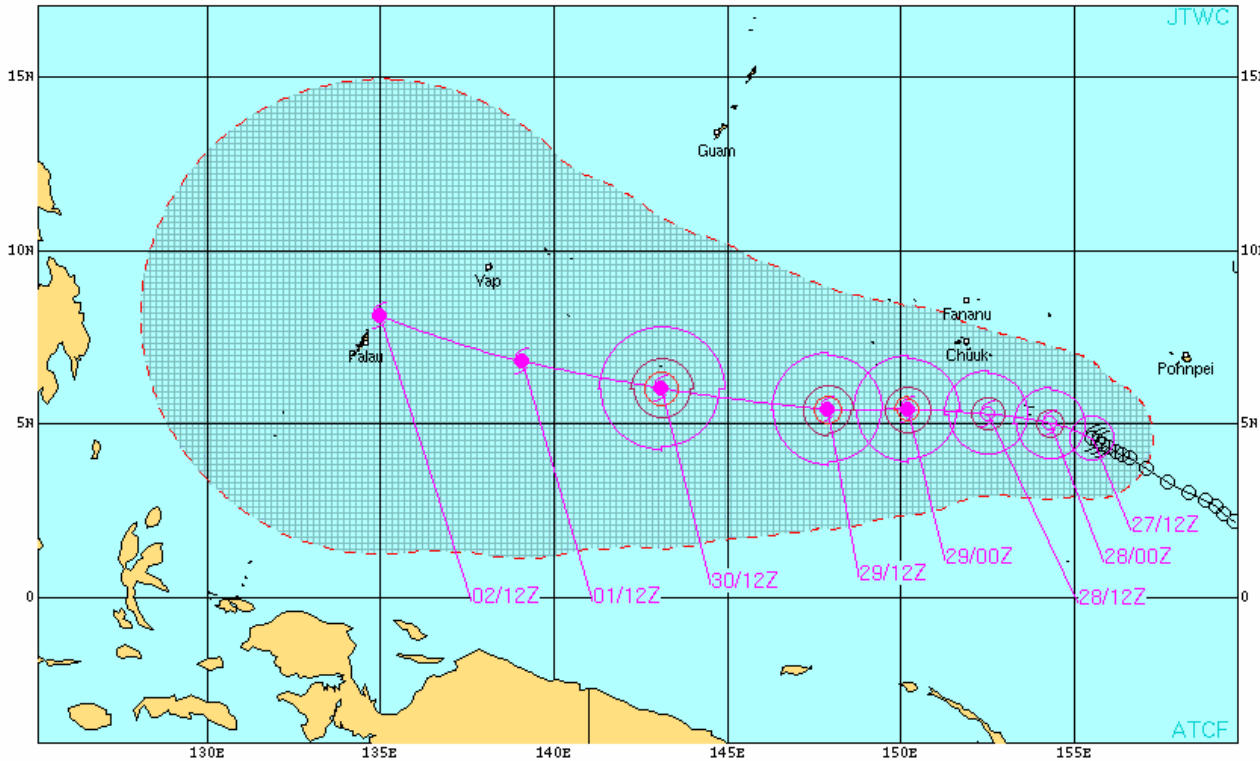


Tropical Cyclone Review

VALID TIME: 27/0600Z
(PRODUCT OF JTWC/SATOPS)



Tropical Cyclone Review



TROPICAL STORM 26W (BOPHA) WARNING #8
 WTPN31 PGTW 271500
 271200Z POSIT: NEAR 4.6N 155.5E
 MOVING 295 DEGREES TRUE AT 02 KNOTS
 MAXIMUM SIGNIFICANT WAVE HEIGHT: 16 FEET
 27/12Z, WINDS 045 KTS, GUSTS TO 055 KTS
 28/00Z, WINDS 055 KTS, GUSTS TO 070 KTS
 28/12Z, WINDS 060 KTS, GUSTS TO 075 KTS
 29/00Z, WINDS 070 KTS, GUSTS TO 085 KTS
 29/12Z, WINDS 075 KTS, GUSTS TO 090 KTS
 30/12Z, WINDS 085 KTS, GUSTS TO 105 KTS
 01/12Z, WINDS 095 KTS, GUSTS TO 115 KTS
 02/12Z, WINDS 100 KTS, GUSTS TO 125 KTS

CPA TO:	NM	DTG
YAP	139	01/22Z
KOROR	59	02/12Z
CHUUK	129	28/16Z

BEARING AND DISTANCE	DIR	DIST (NM)	TAU (HRS)
CHUUK	165	137	24
POHNPEI	255	353	24
CHUUK	242	270	48
YAP	125	364	72

○ LESS THAN 34 KNOTS
 ◐ 34-63 KNOTS
 ◑ MORE THAN 63 KNOTS
 PAST 6 HOURLY CYCLONE POSITS IN BLACK
 FORECAST CYCLONE POSITS IN COLOR

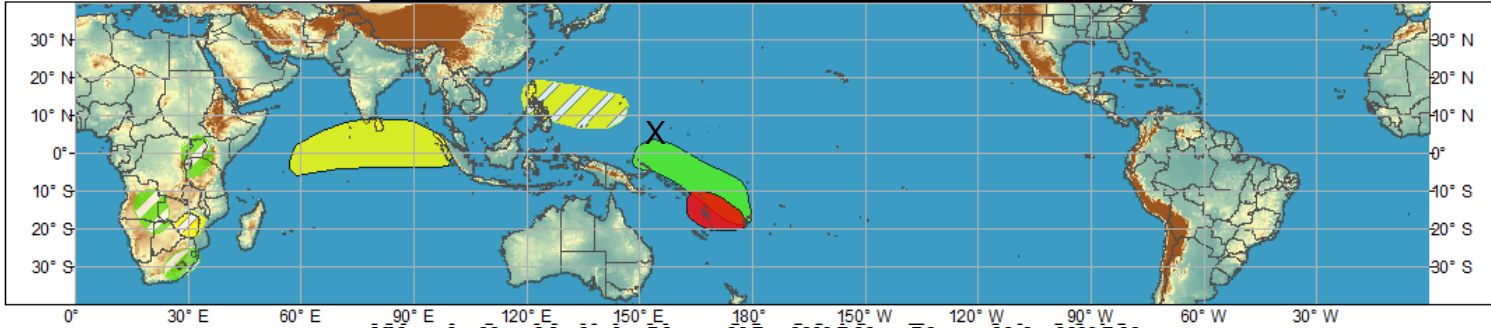




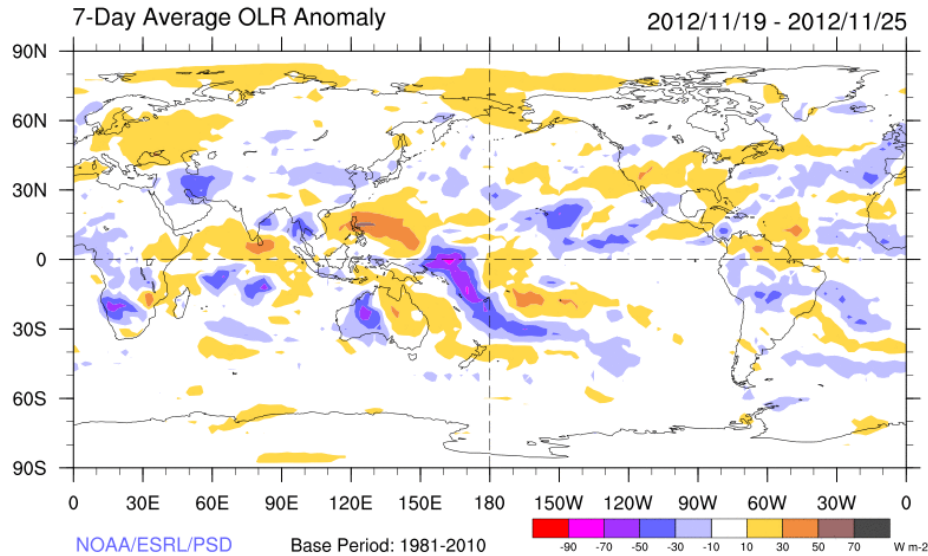
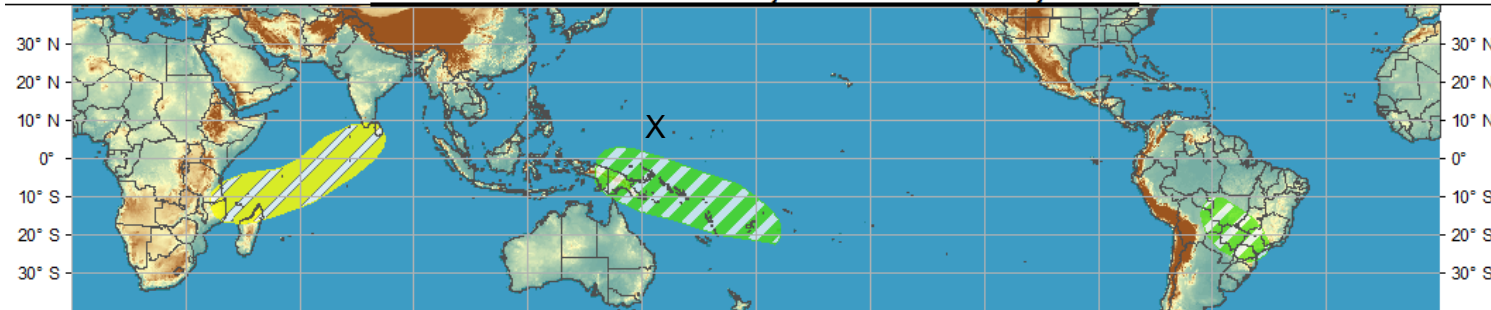
Global Tropical Hazards/Benefits Outlook - Climate Prediction Center



Week 1 - Valid: Nov 21, 2012 - Nov 27, 2012



Week 2 - Valid: Nov 21, 2012 - Nov 27, 2012



Outlook Review

Synopsis of Climate Modes

ENSO:

- ENSO-neutral conditions continue and ENSO-neutral is favored during the Northern Hemisphere winter 2012-13.

MJO and other subseasonal variability:

- The MJO has remained weak during the past week as several observational indicators remain incoherent.
- Most of the dynamical model MJO index forecasts currently indicate little, if any, coherent MJO signal during the next two weeks. Some ensemble members point to the MJO emerging in phases 8 or 1 late in the period.
- A strong equatorial Rossby wave is located in the West Pacific (now co-located with Tropical Storm Bopha)

Extratropics:

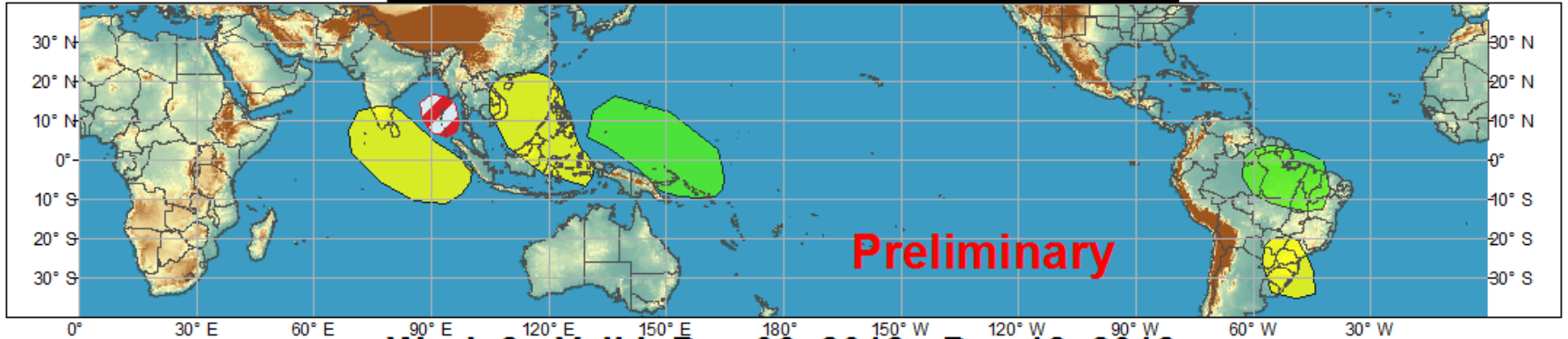
- AO/NAO forecast to be negative on average over the next two weeks. In spite of this, much of country is forecast to be warmer-than-normal to start December. Significant uncertainty exists beyond this period.



Global Tropical Hazards/Benefits Outlook - Climate Prediction Center



Week 1 - Valid: Nov 29, 2012 - Dec 05, 2012



Week 2 - Valid: Dec 06, 2012 - Dec 12, 2012



Produced: 11/27/2012

Forecaster: Baxter

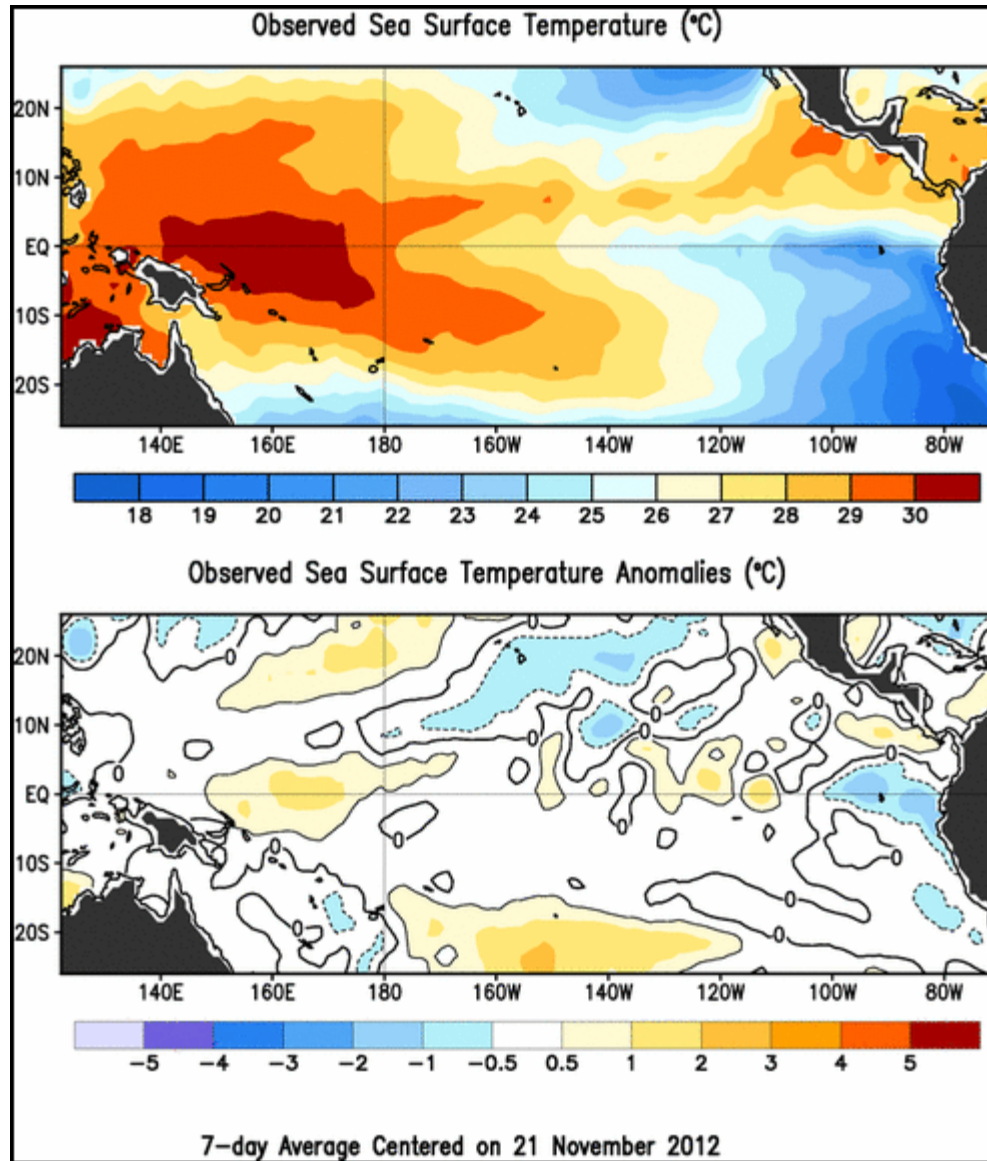
Confidence
High Moderate

- | | | |
|-----------------------------------|--|--|
| Tropical Cyclone Formation | | Development of a tropical cyclone that eventually reaches tropical storm/cyclone strength. |
| Above-average rainfall | | Weekly total rainfall in the upper third of the historical range. |
| Below-average rainfall | | Weekly total rainfall in the lower third of the historical range. |
| Above-normal temperatures | | 7-day mean temperatures in the upper third of the historical range. |
| Below-normal temperatures | | 7-day mean temperatures in the lower third of the historical range. |

Product is updated once per week. The product targets broad scale conditions integrated over a 7-day period for US interests only. Consult your local responsible forecast agency.



SST Observations

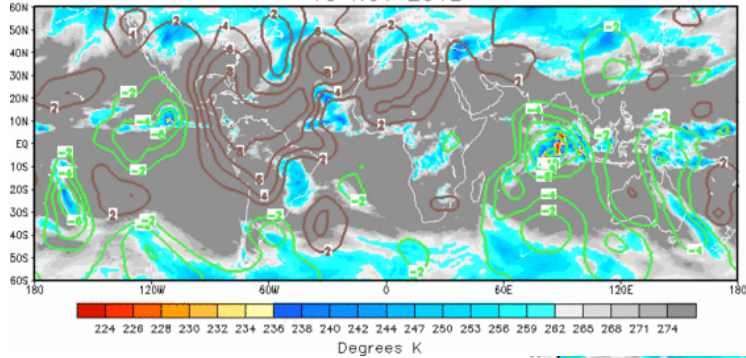


IR Satellite & 200-hpa Velocity Potential Anomalies

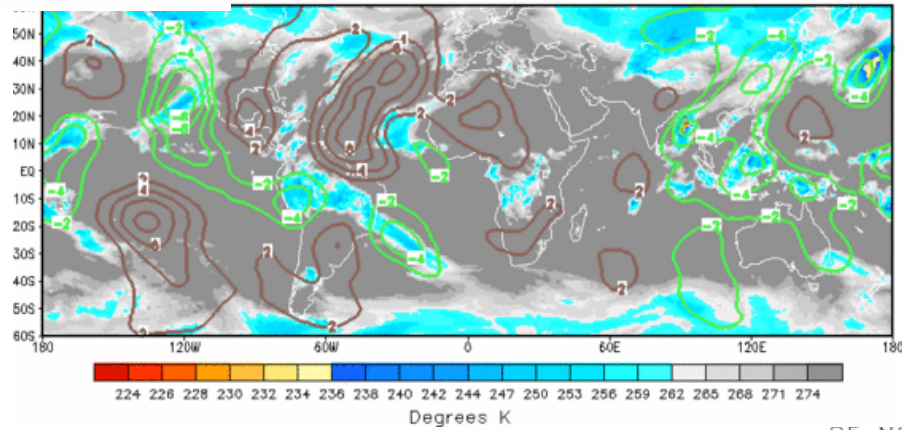
Green: Enhanced Divergence

Brown: Enhanced Convergence

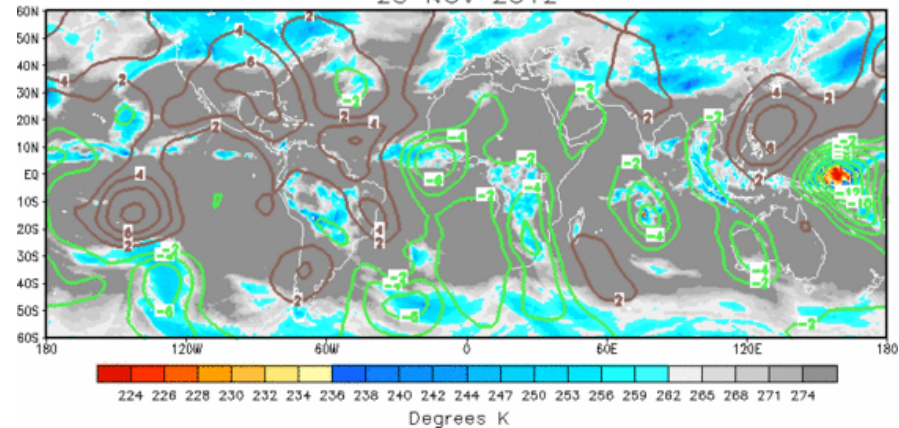
10 NOV 2012



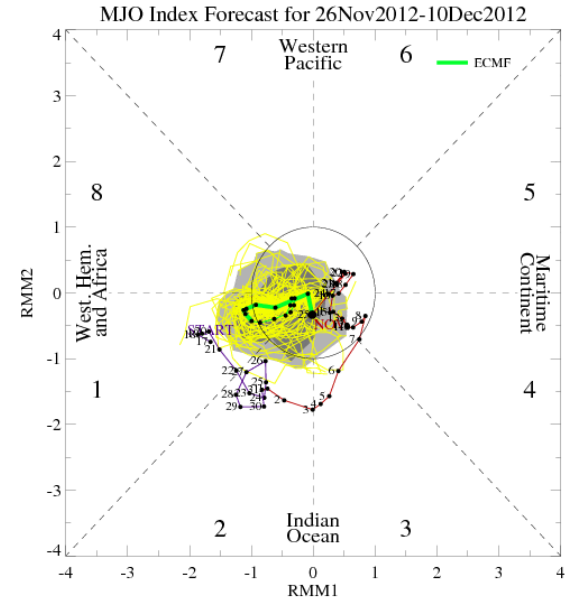
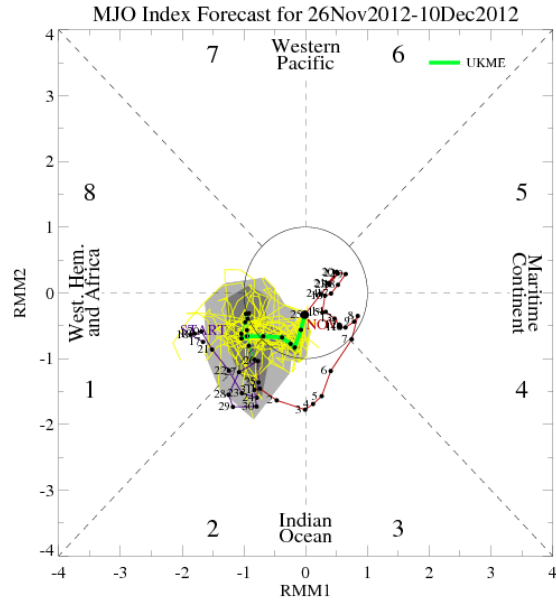
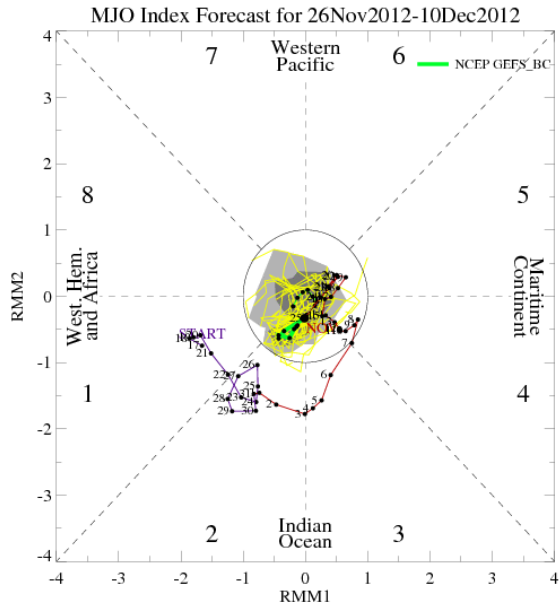
17 NOV 2012



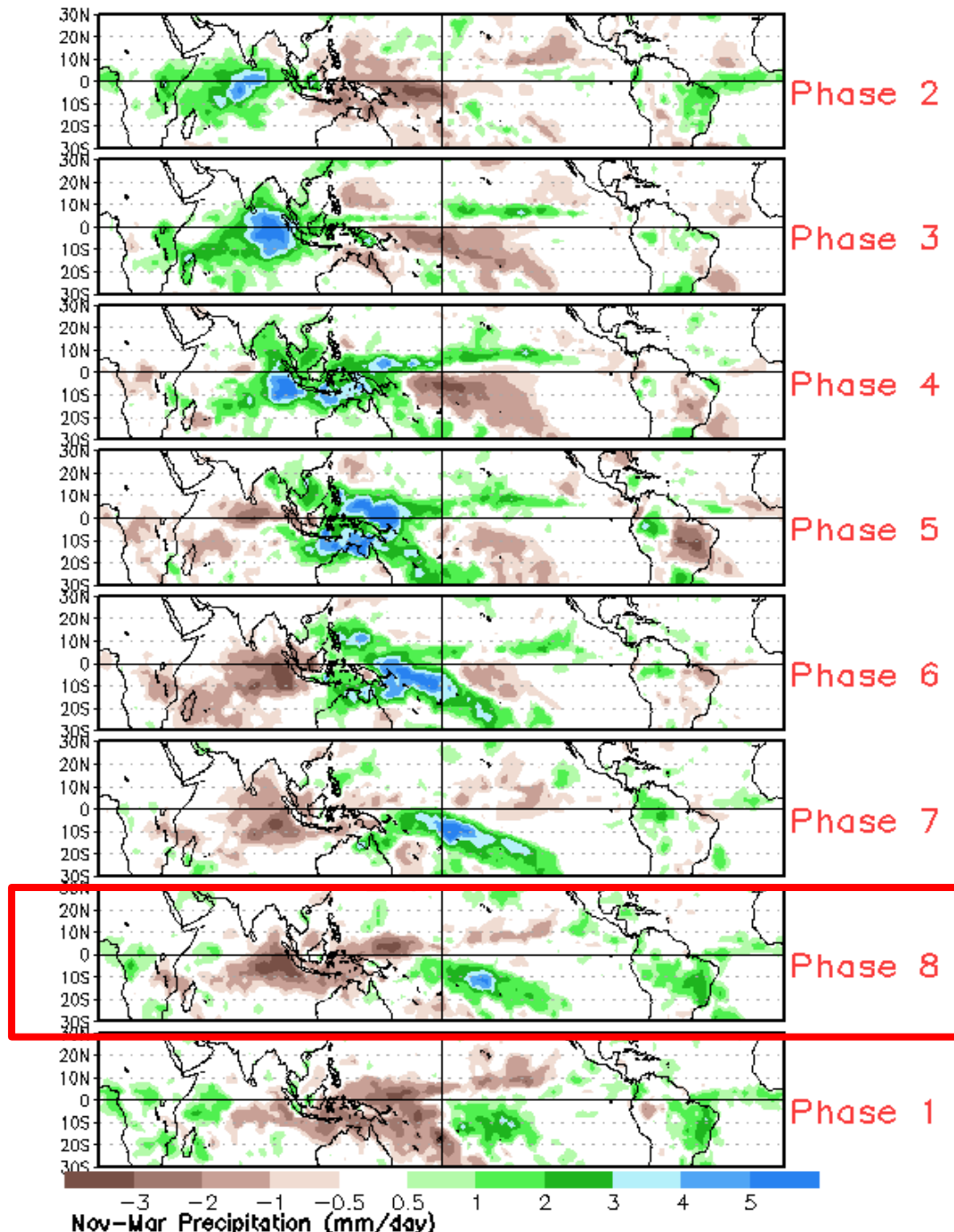
25 NOV 2012



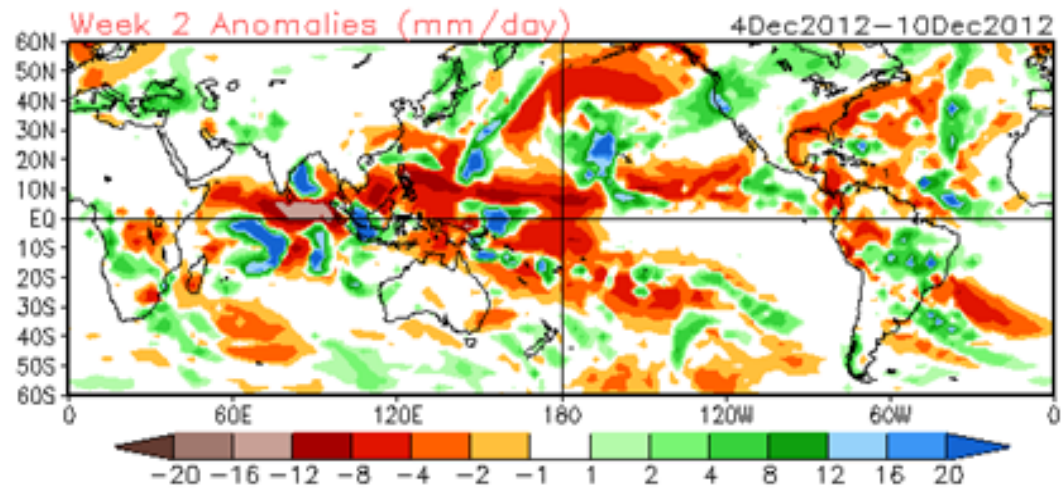
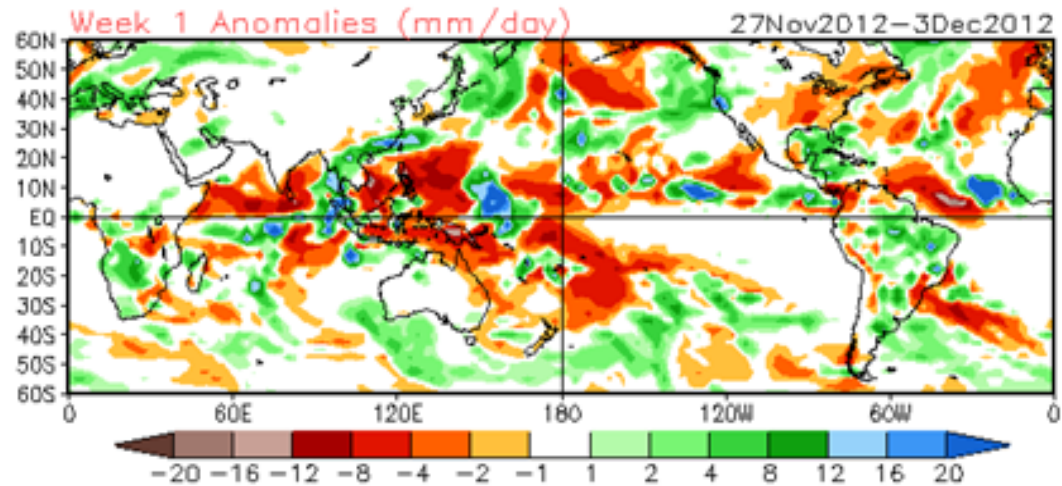
MJO Observation/Forecast



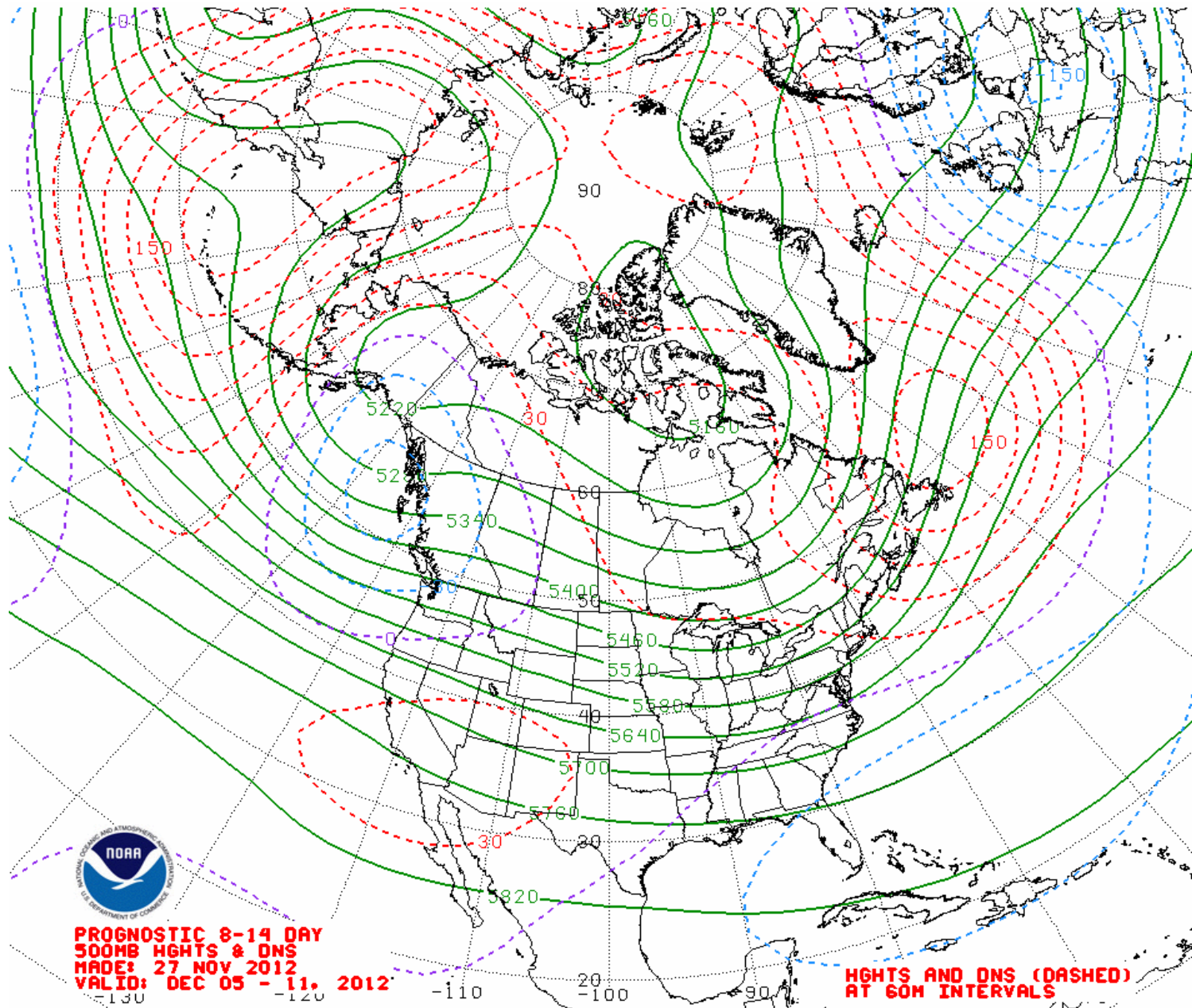
Average Conditions when the MJO is present (Nov-Mar)



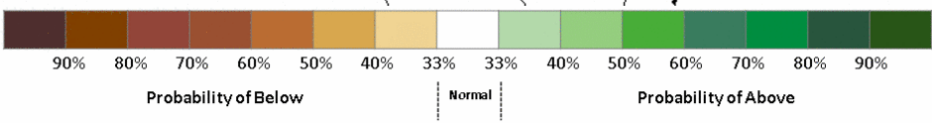
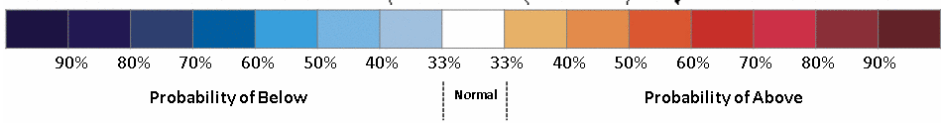
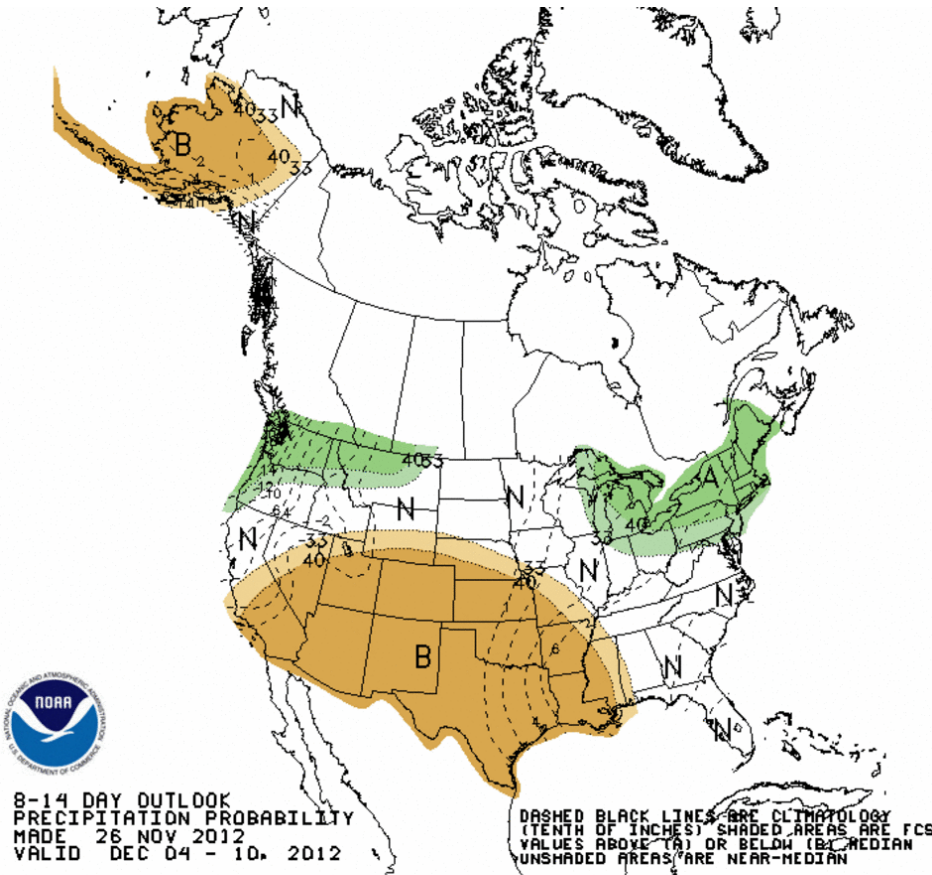
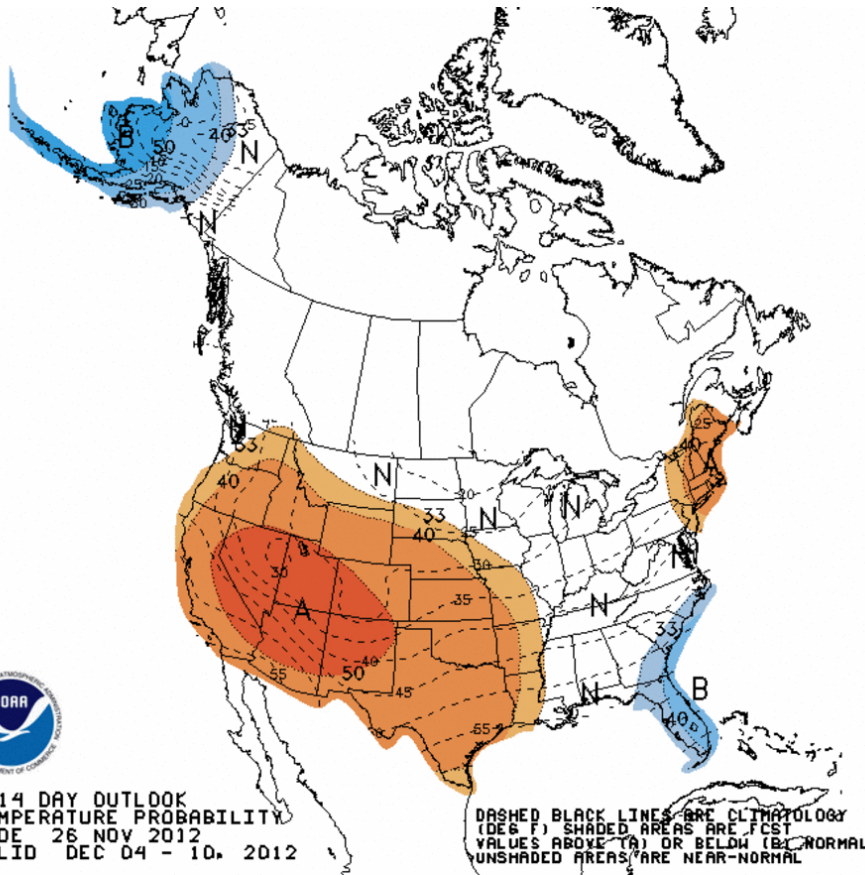
CFSv2 Weeks 1 & 2 Precipitation
16 Member Ensemble Mean Forecast from 26Nov2012



Week 2 500-hPa Manual Chart



Week 2 -- Temperature and Precipitation



Recent AO Observations and GEFS Forecast

