

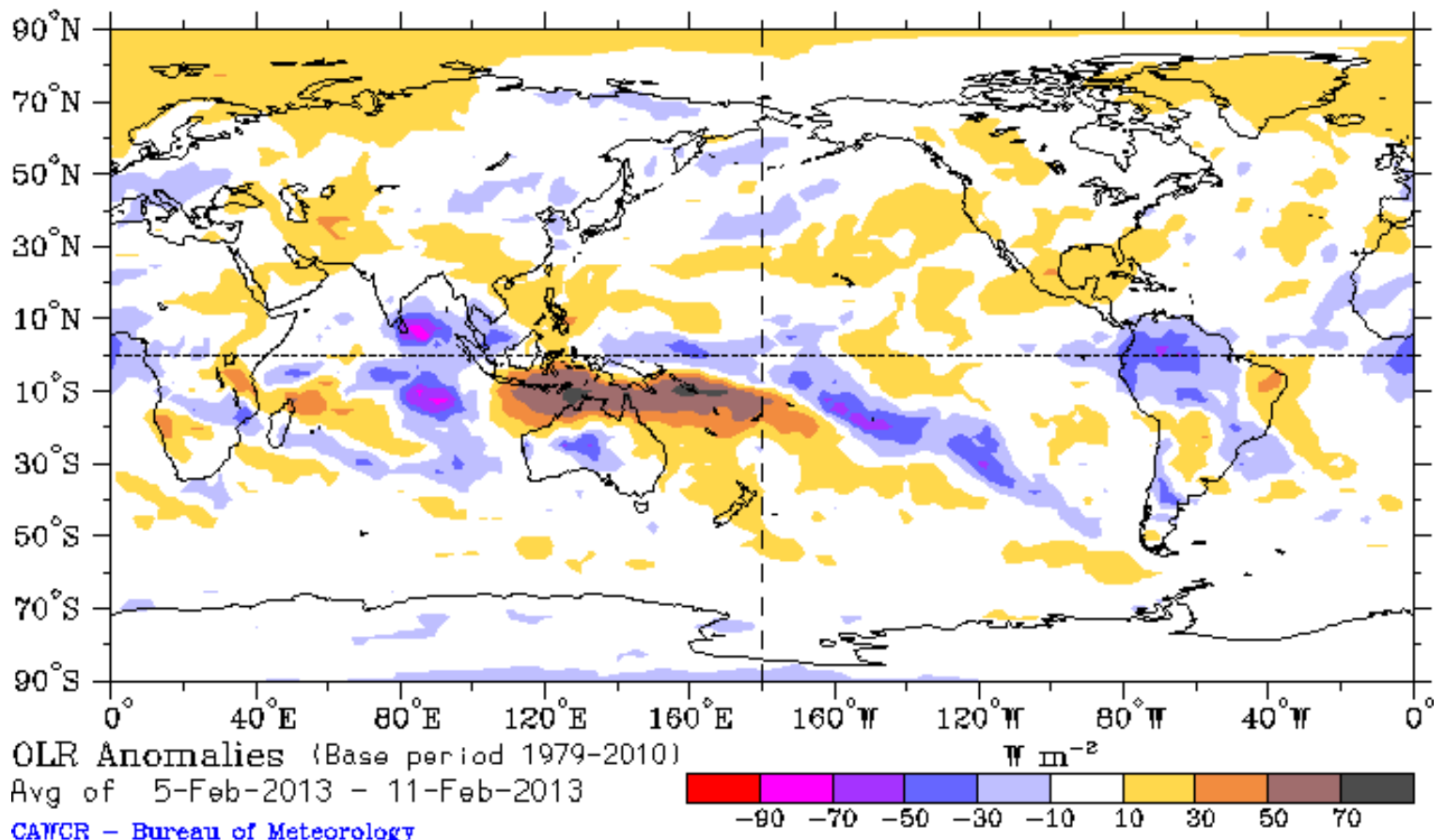
Global Tropics Hazards And Benefits Outlook

February 12, 2013

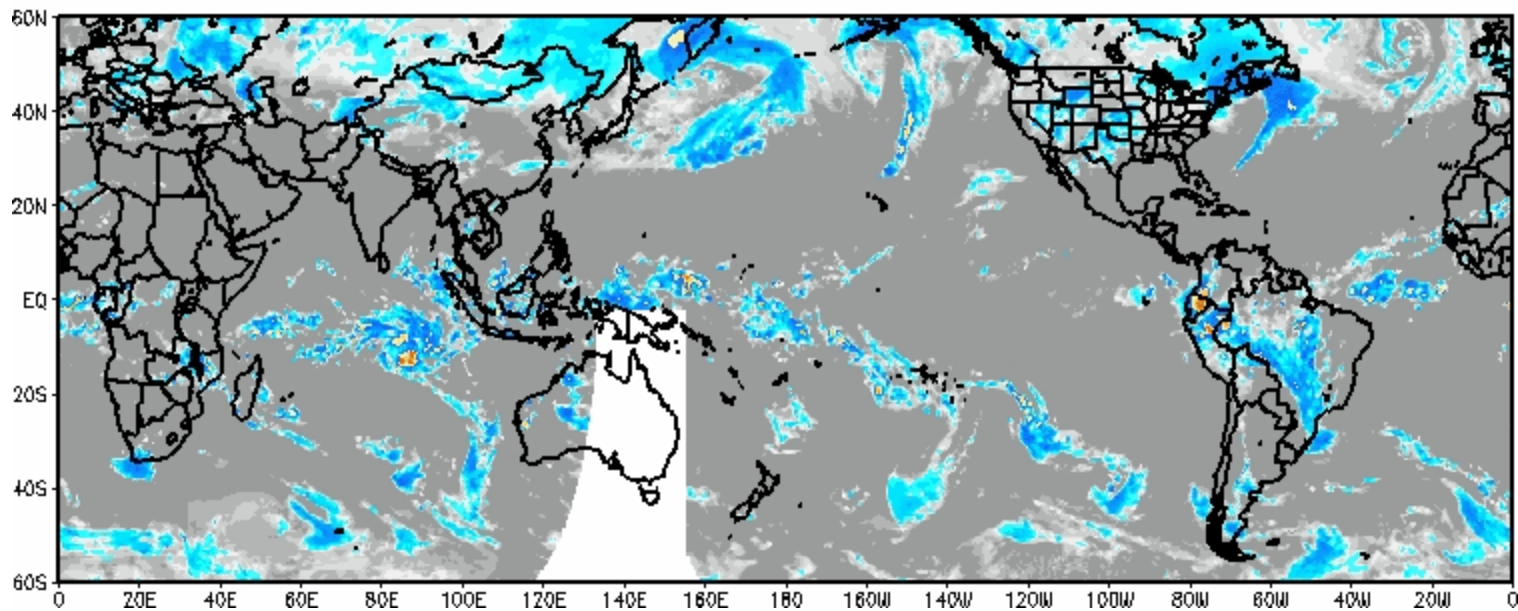
Jon Gottschalck

Outline

1. Review of Recent Conditions
2. Synopsis of Climate Modes
3. GTH Outlook and Forecast Discussion

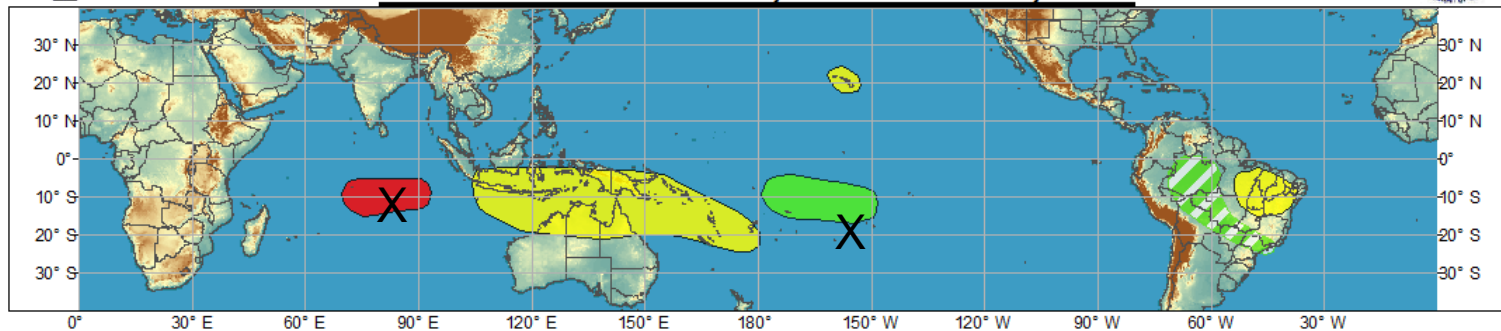


IR Temperatures
0900 UTC 09 FEB 2013

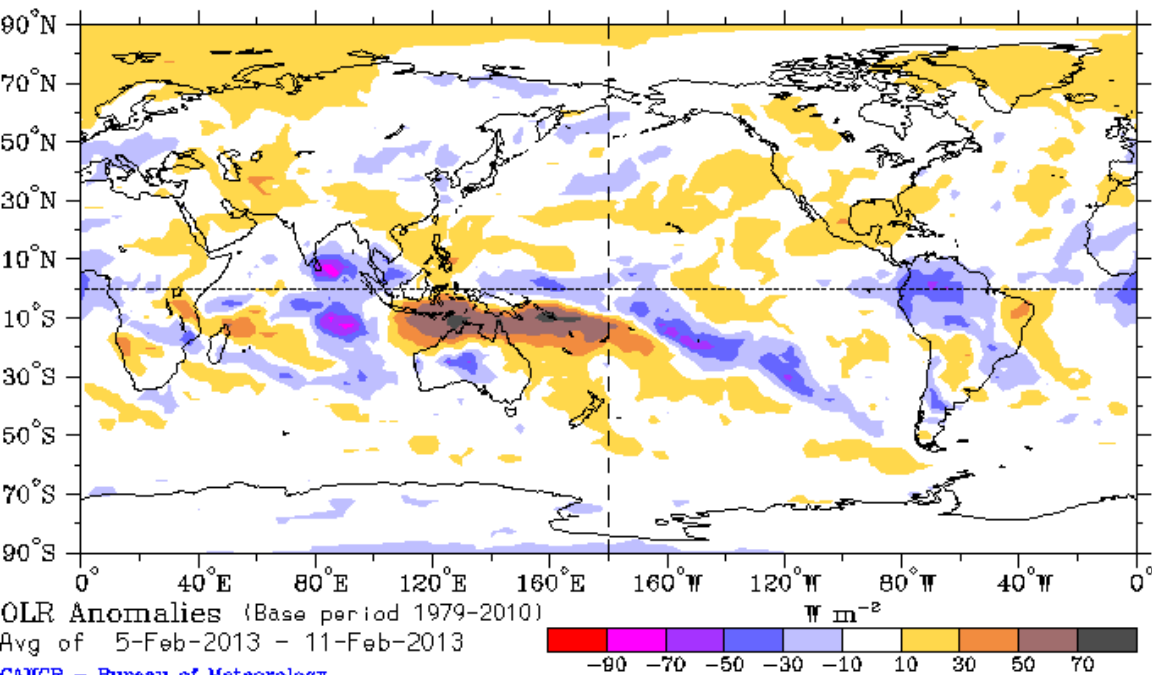
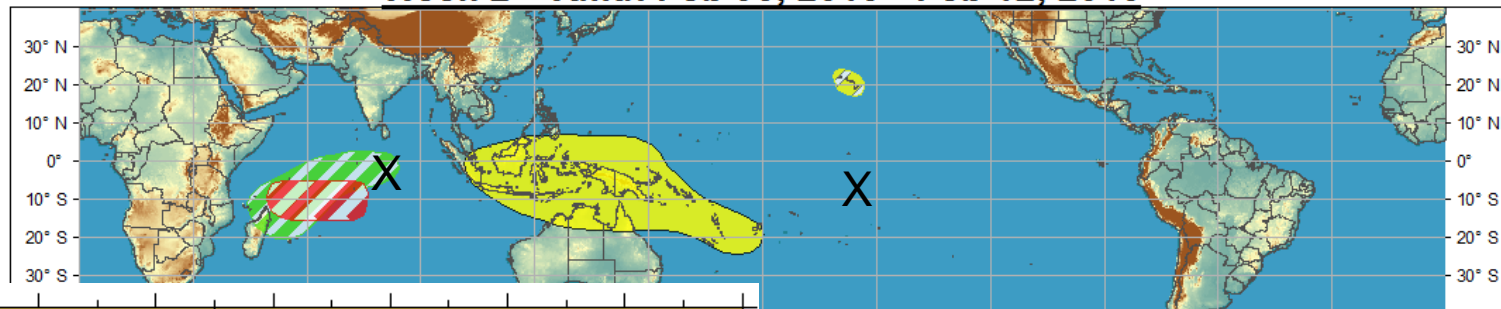




Week 1 - Valid: Feb 06, 2013 - Feb 12, 2013



Week 2 - Valid: Feb 06, 2013 - Feb 12, 2013



Outlook
Review

Synopsis of Climate Modes

ENSO:

- ENSO-neutral conditions are favored to continue through Northern Hemisphere spring 2013

MJO and other subseasonal tropical variability:

- The MJO remained active with the enhanced phase centered across Africa and approaching the Indian Ocean.
- There is good agreement in dynamical model MJO index forecasts for the continuation of a MJO signal, although this is likely influenced by atmospheric Kelvin wave activity as eastward propagation in the forecasts is fast as compared to a canonical MJO.
- The enhanced phase is expected to cross the Indian Ocean and enter the Maritime continent over the next 2 weeks.

Extratropics:

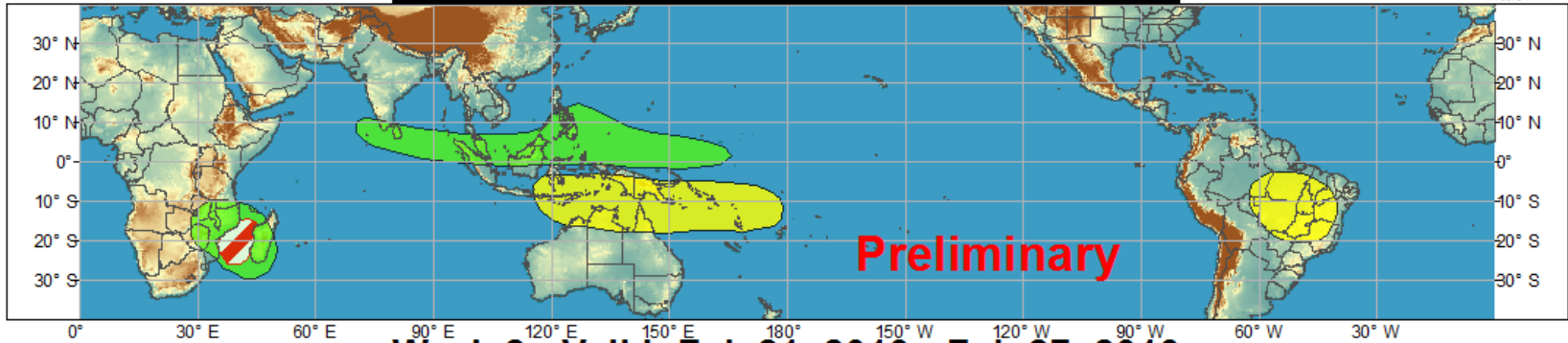
- The forecast MJO evolution would favor a trough across the west on average near or just after mid-February and so an elevated chance for below-normal temperatures across the west.
- Late in February into early March would favor troughing along or near the west coast and a ridge on average across the eastern U.S.



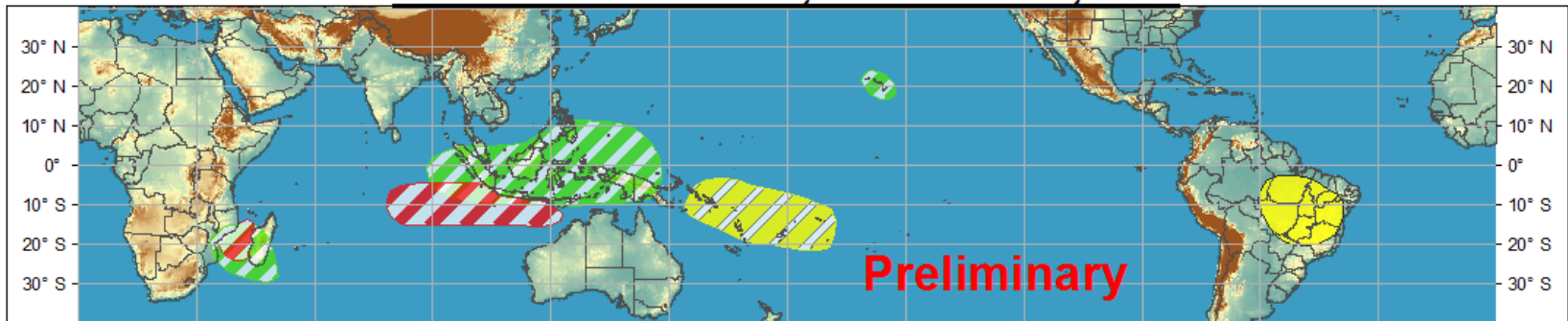
Global Tropical Hazards/Benefits Outlook - Climate Prediction Center



Week 1 - Valid: Feb 14, 2013 - Feb 20, 2013



Week 2 - Valid: Feb 21, 2013 - Feb 27, 2013



Confidence
High Moderate

Tropical Cyclone Formation



Development of a tropical cyclone that eventually reaches tropical storm/cyclone strength.

Above-average rainfall



Weekly total rainfall in the upper third of the historical range.

Below-average rainfall



Weekly total rainfall in the lower third of the historical range.

Above-normal temperatures



7-day mean temperatures in the upper third of the historical range.

Below-normal temperatures



7-day mean temperatures in the lower third of the historical range.

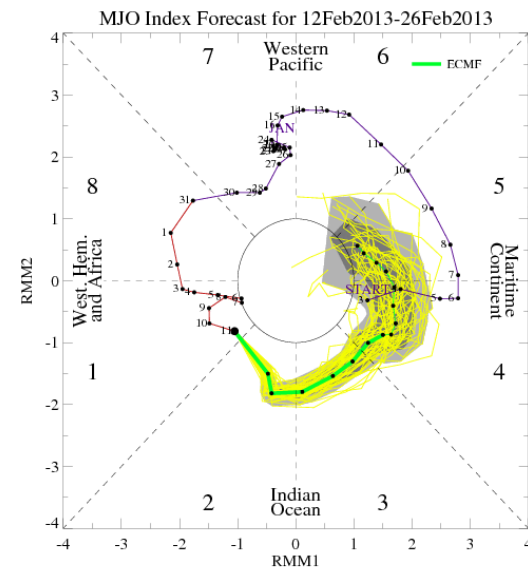
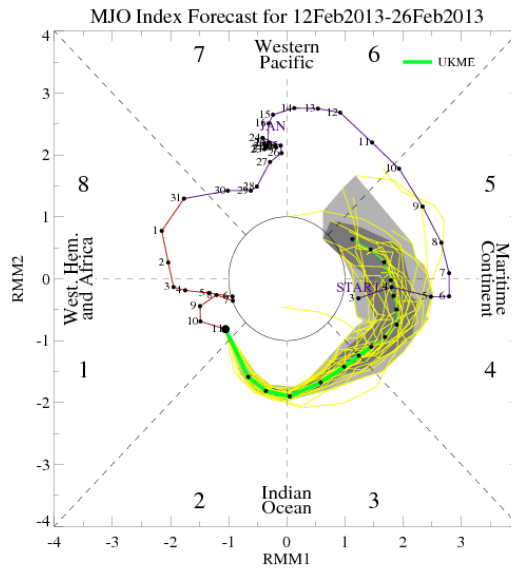
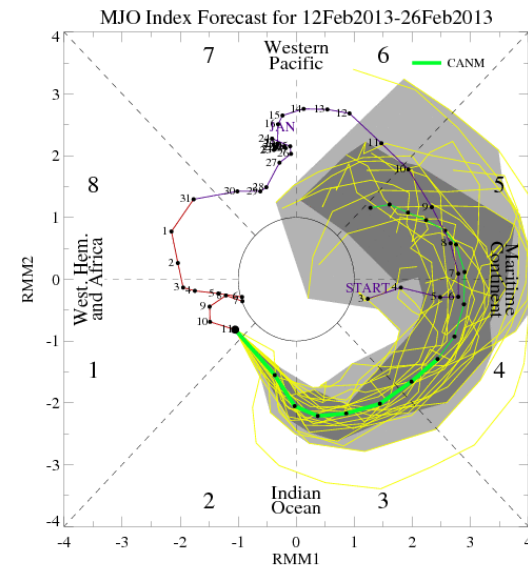
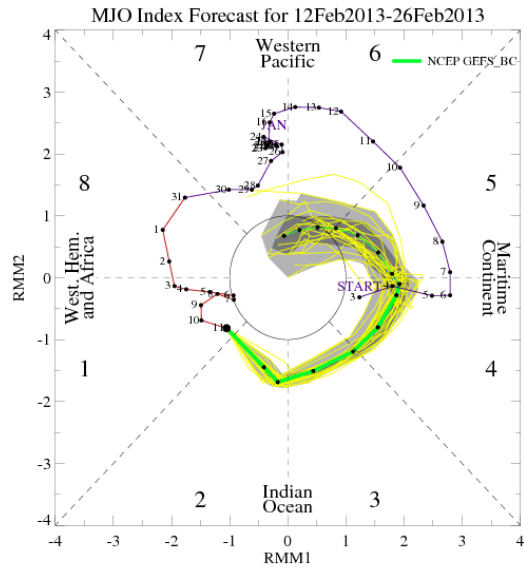
Produced: 02/12/2013

Forecaster: Gottschalck

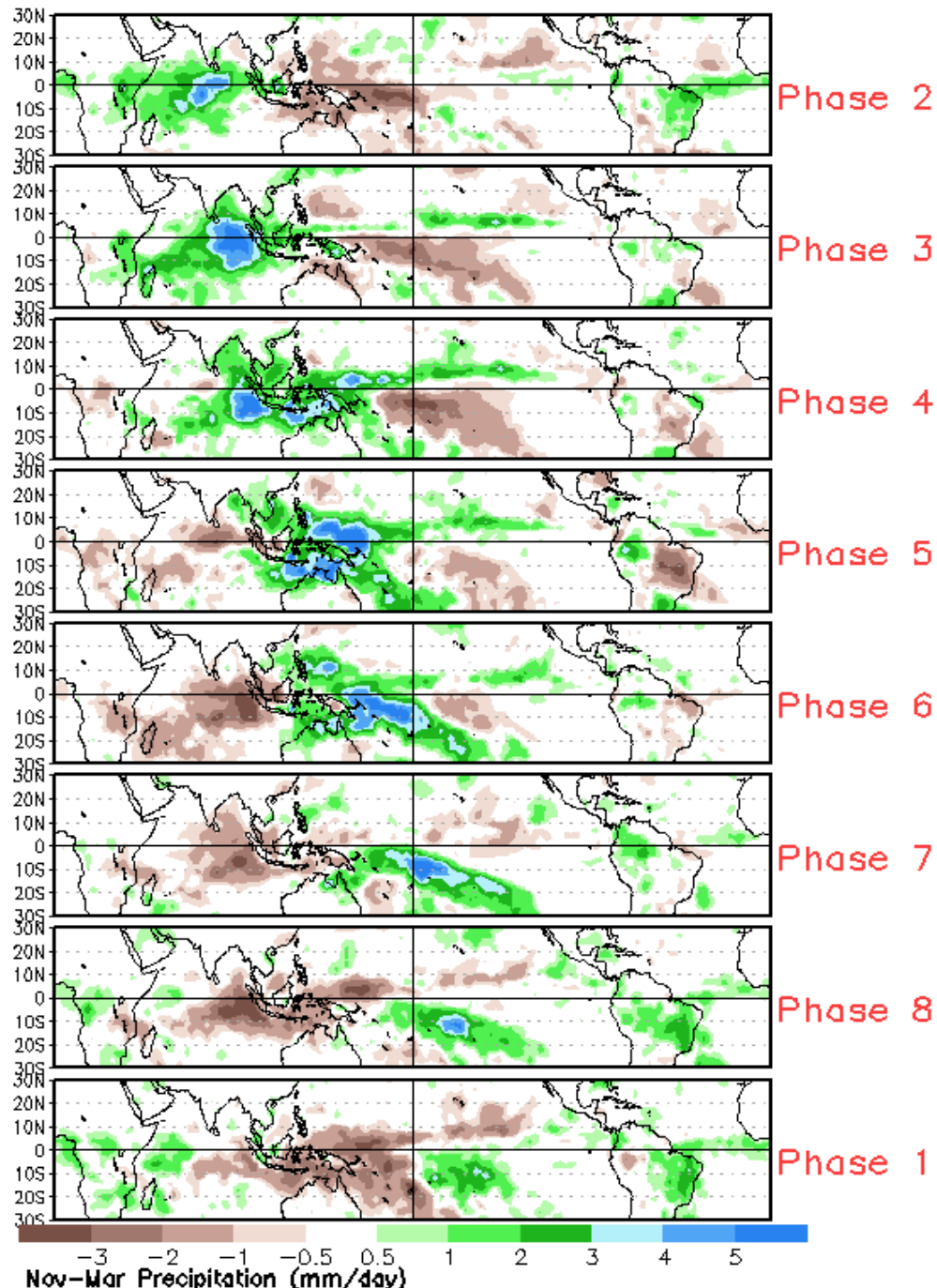
Product is updated once per week. The product targets broad scale conditions integrated over a 7-day period for US interests only. Consult your local responsible forecast agency.



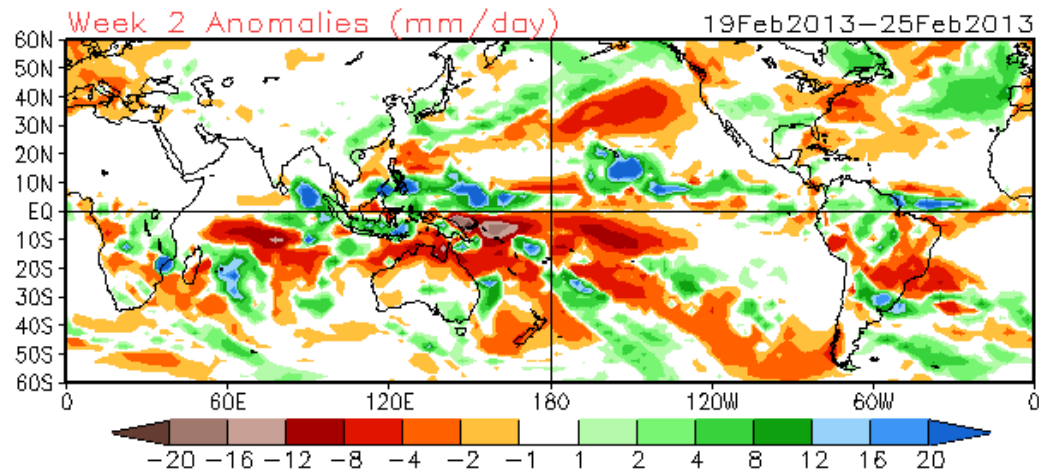
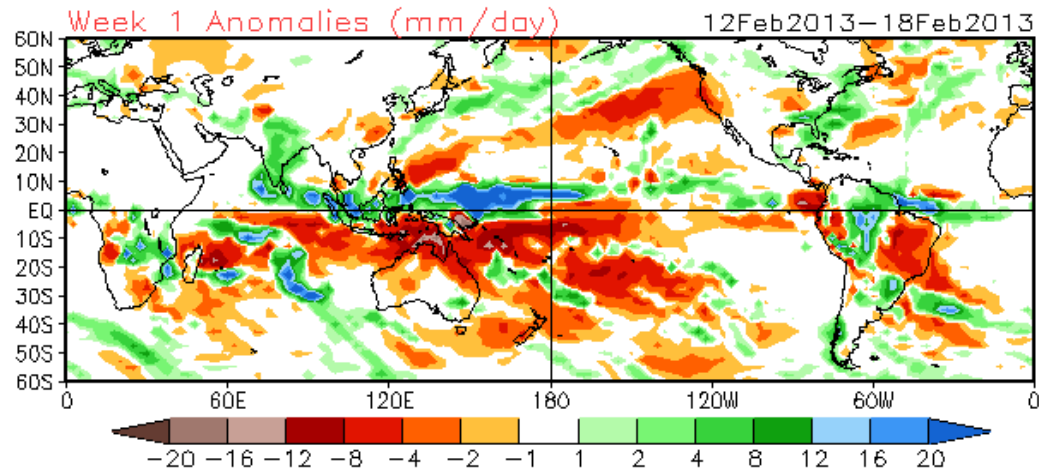
MJO Observation/Forecast



Average Conditions when the MJO is present (Nov-Mar)

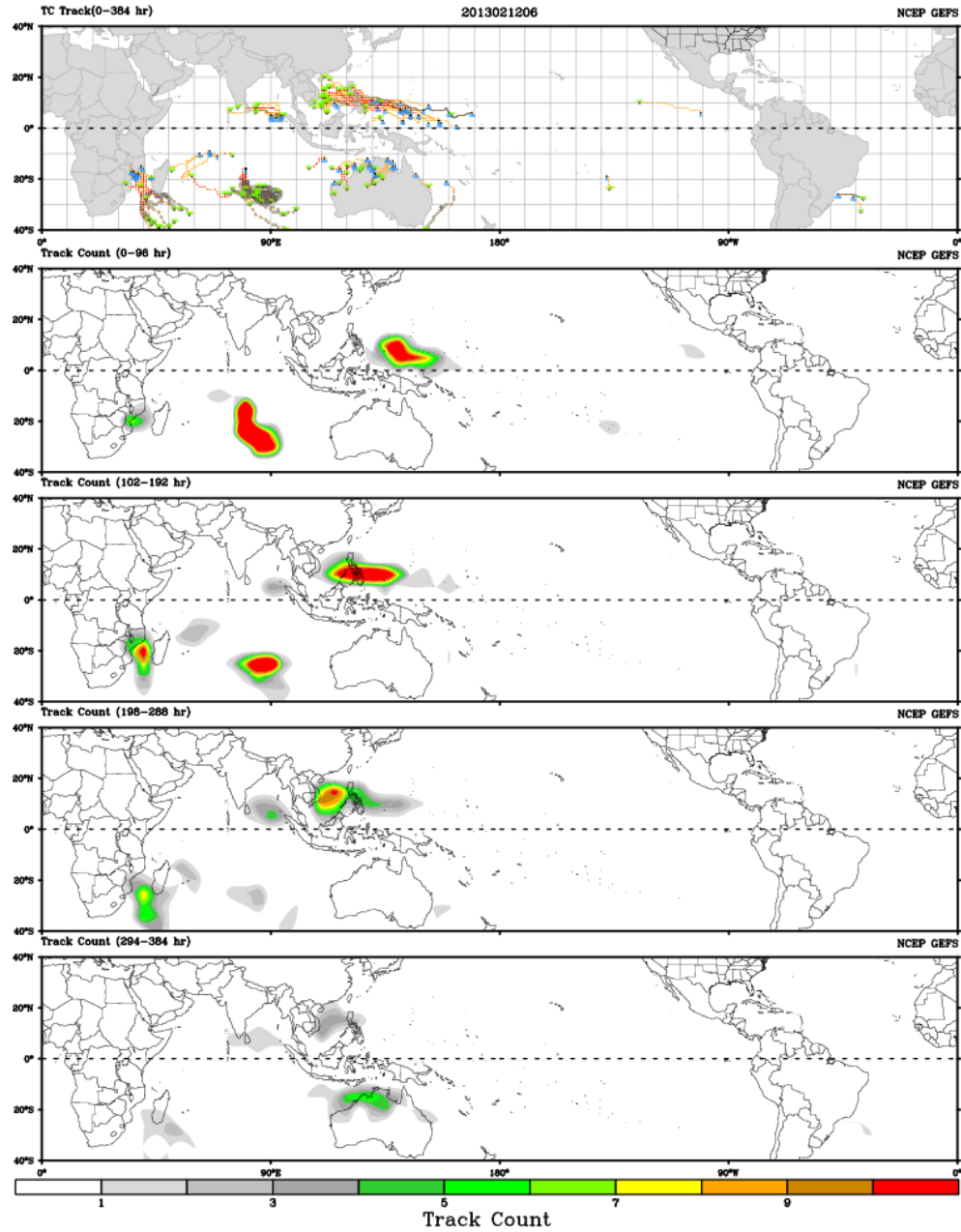


CFSv2 Weeks 1 & 2 Precipitation
16 Member Ensemble Mean Forecast from 11Feb2013

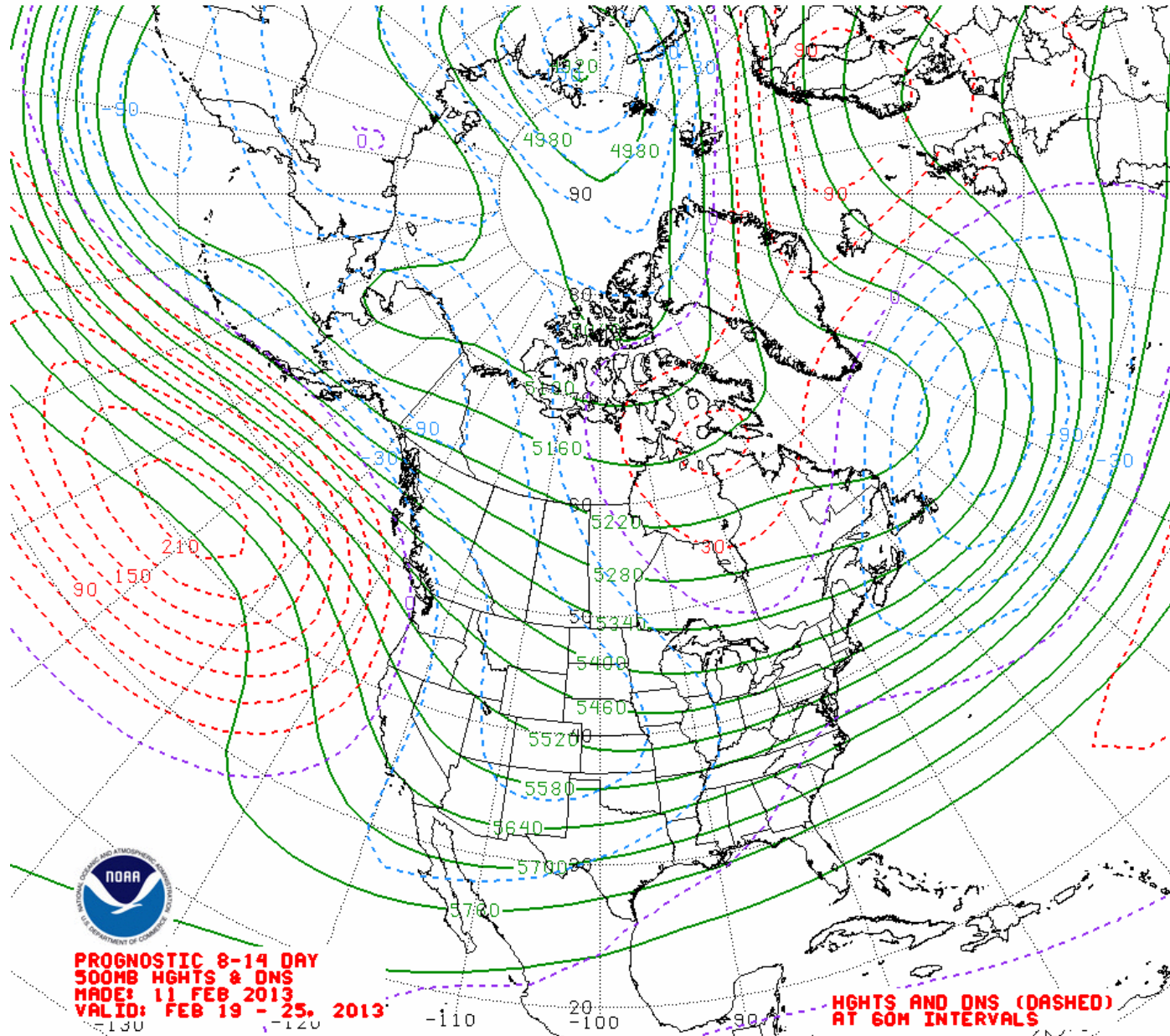


GFS Tropical Cyclone Guidance

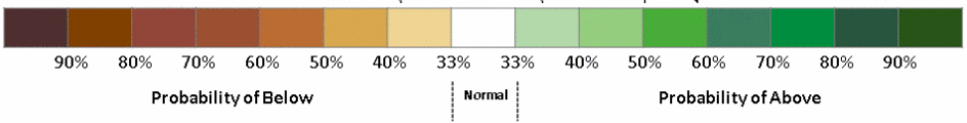
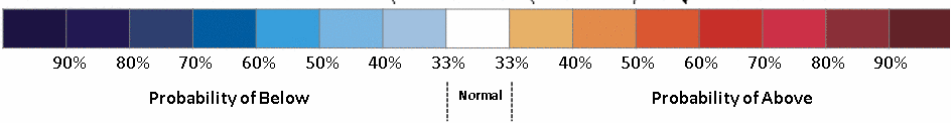
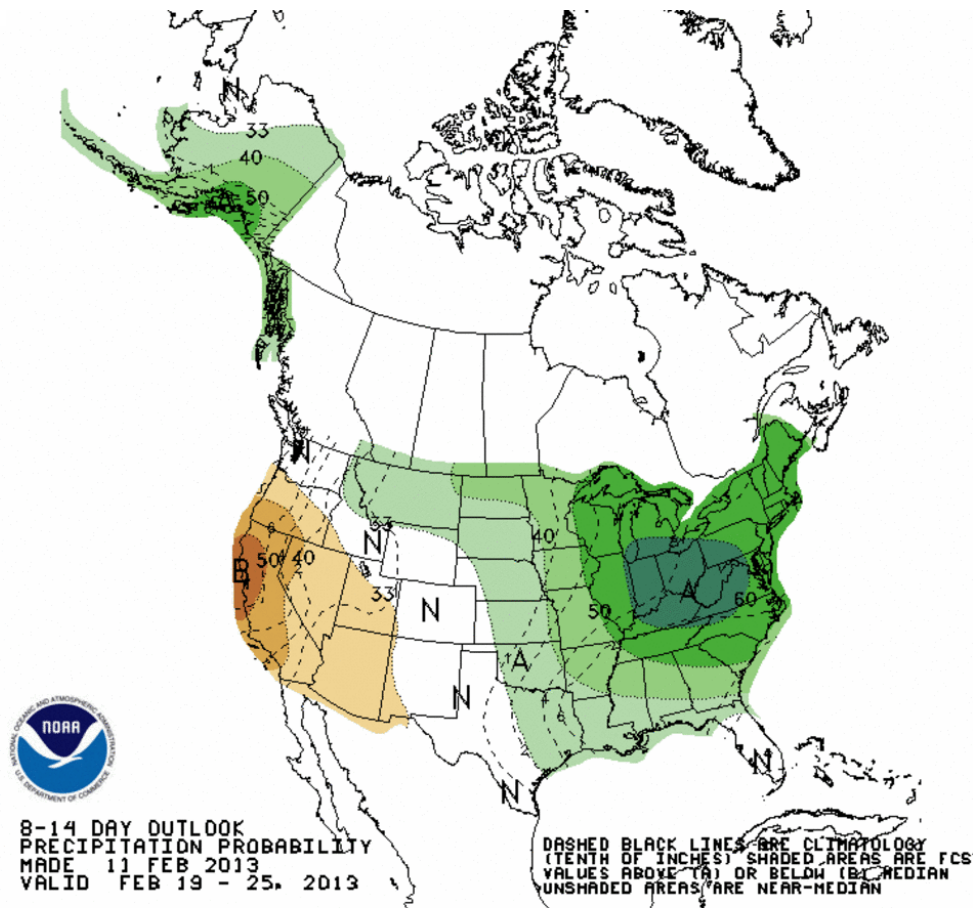
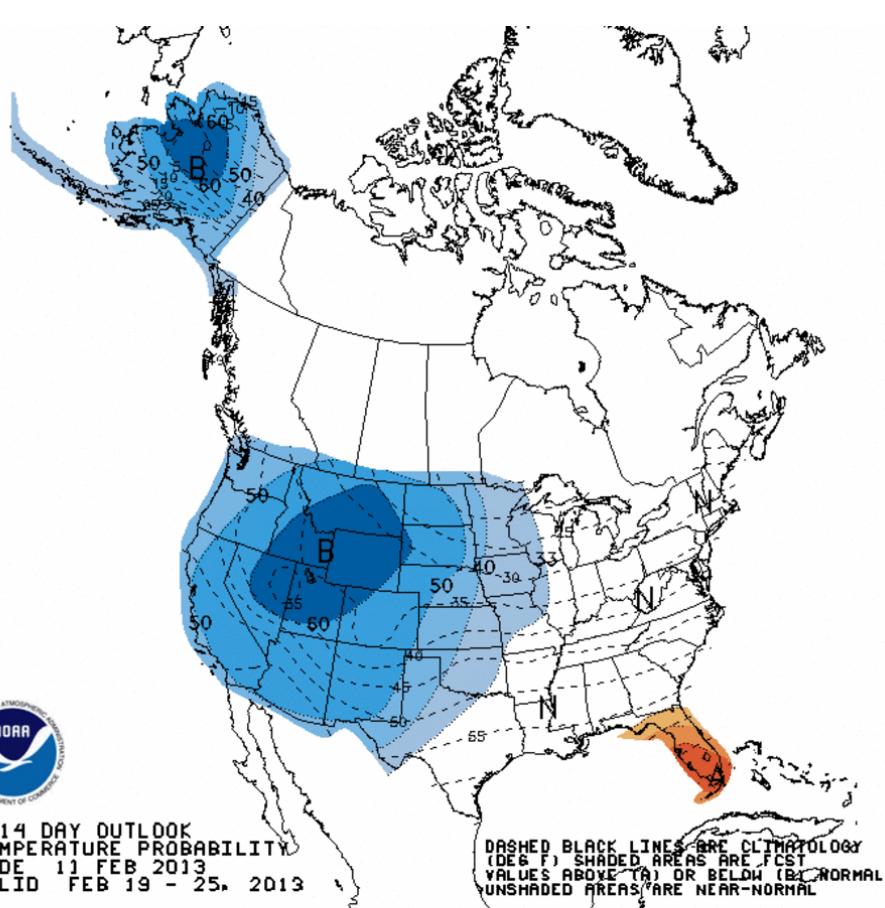
CWB TC Tracker for NCEP GEFS (AllCriteria)



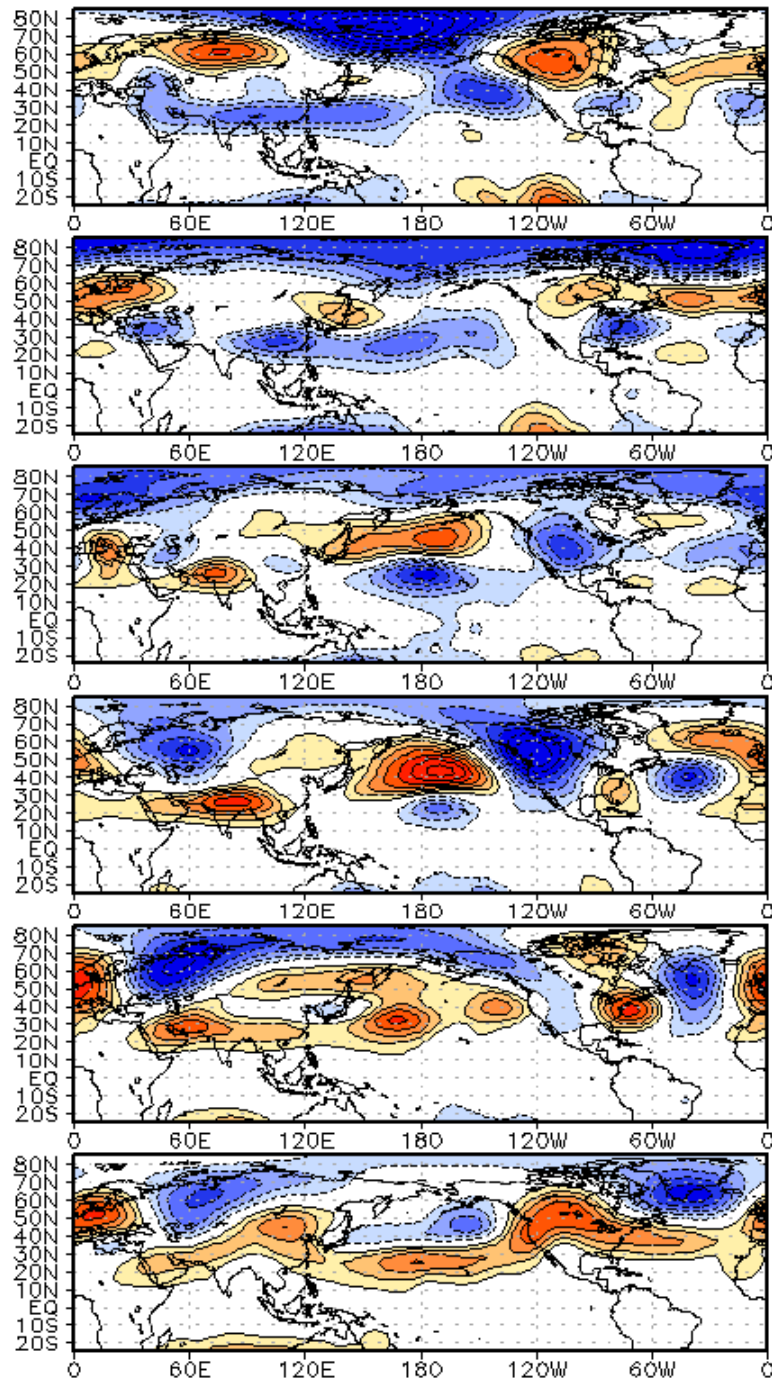
Week 2 500-hPa Manual Chart



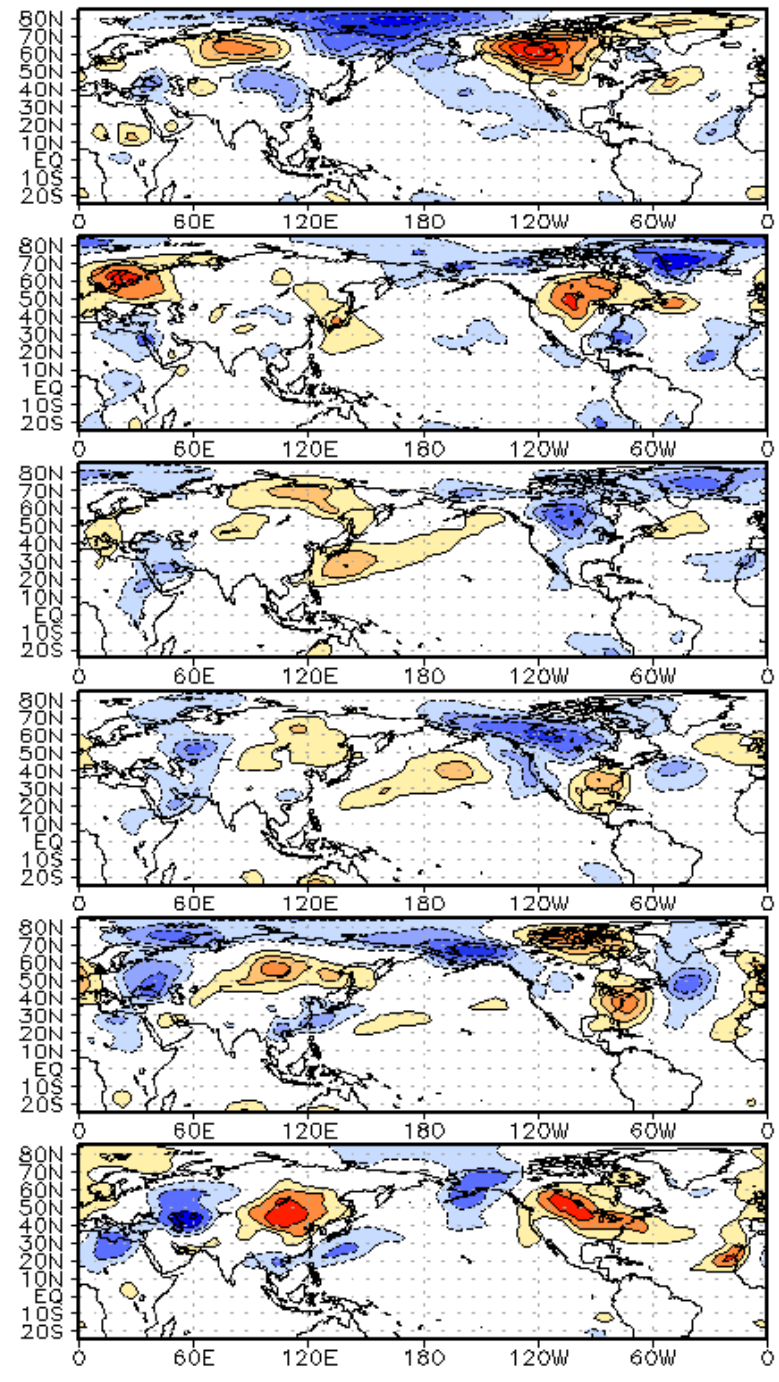
Week 2 – Temperature and Precipitation



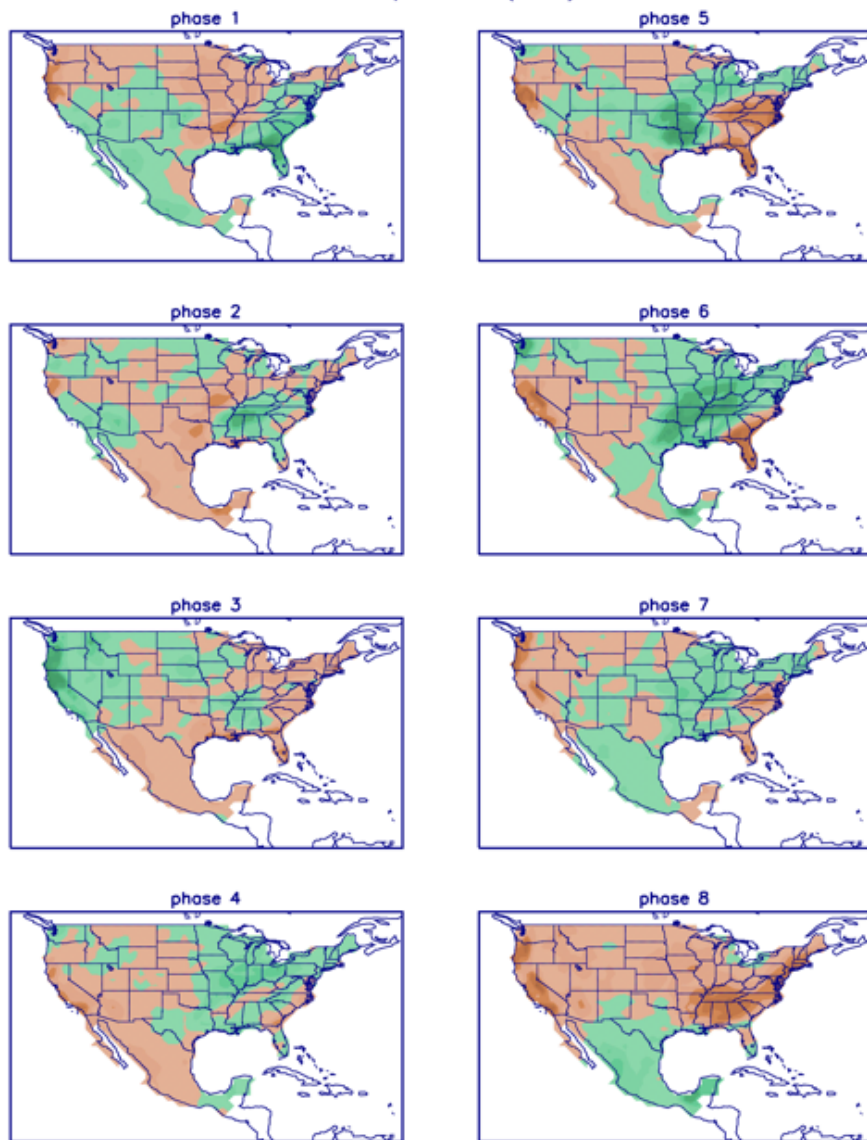
WHMJO Phase 1 z200 Lagged Composite (Jfm)



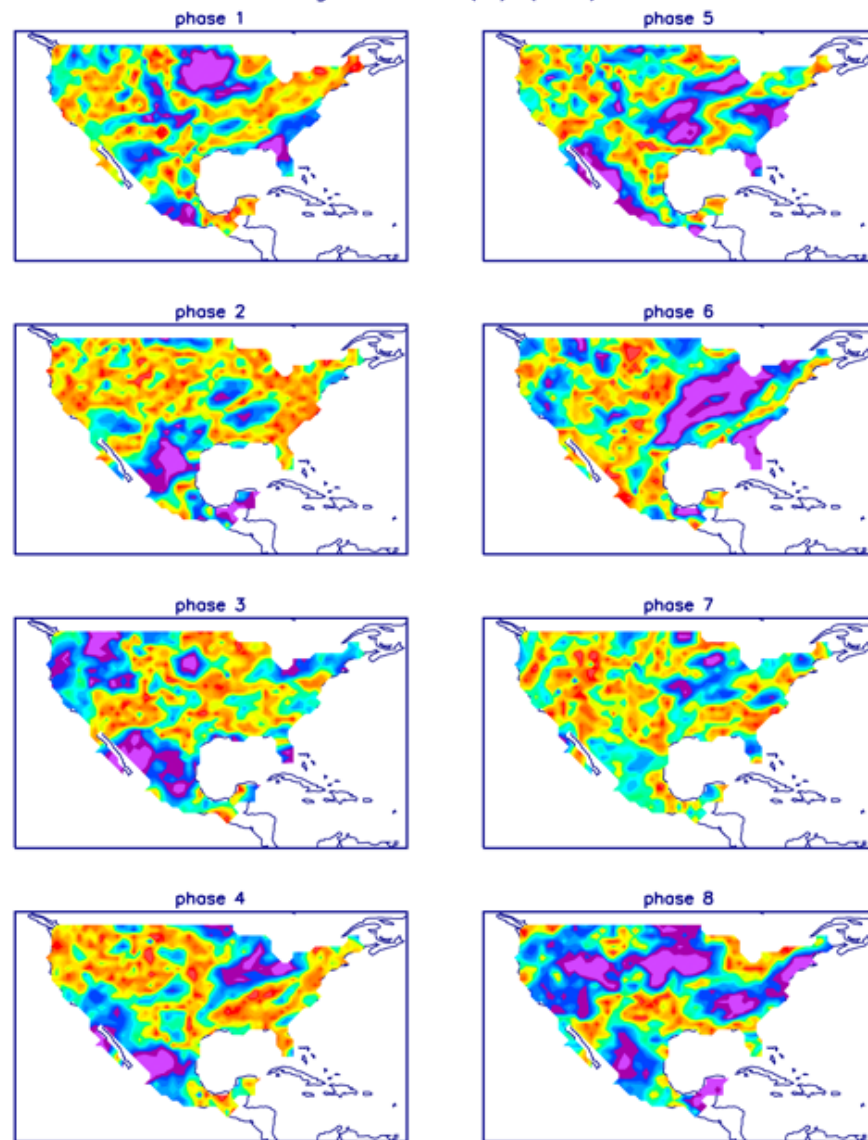
WHMJO Phase 1 t850 Lagged Composite (Jfm)



P composites (JFM)



Significance (%) (JFM)

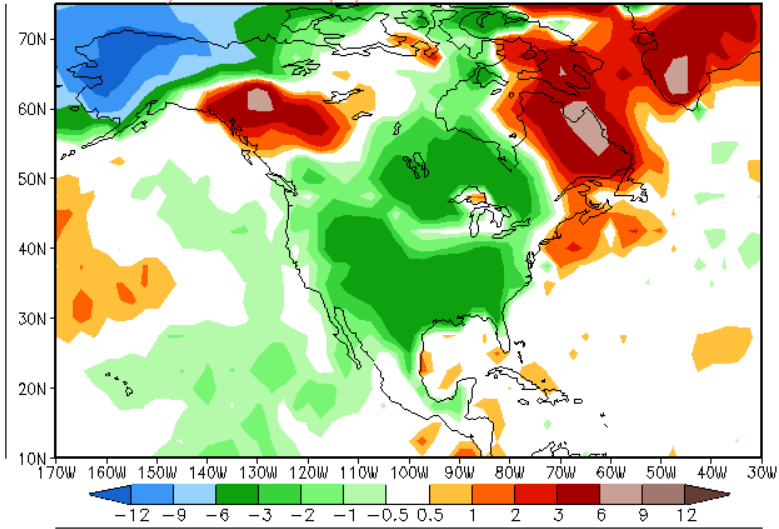


CFS U.S. Temperature

CFSv2 Extended Range Temperature

16 Member Ensemble Mean Forecast from 11Feb2013

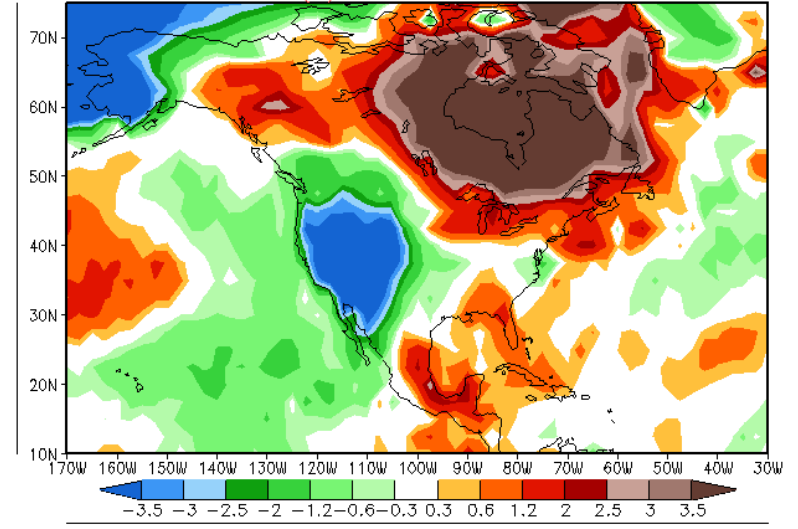
6-10 Day Anomalies (K) 18Feb2013-22Feb2013



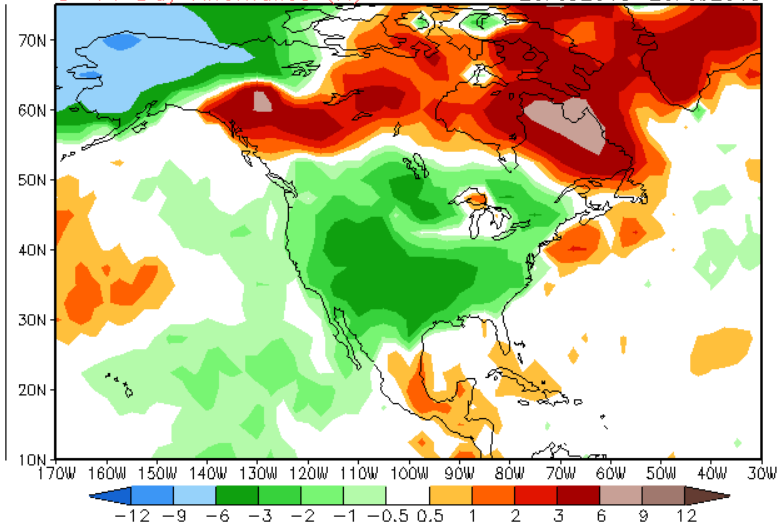
CFSv2 Extended Range Temperature

16 Member Ensemble Mean Forecast from 11Feb2013

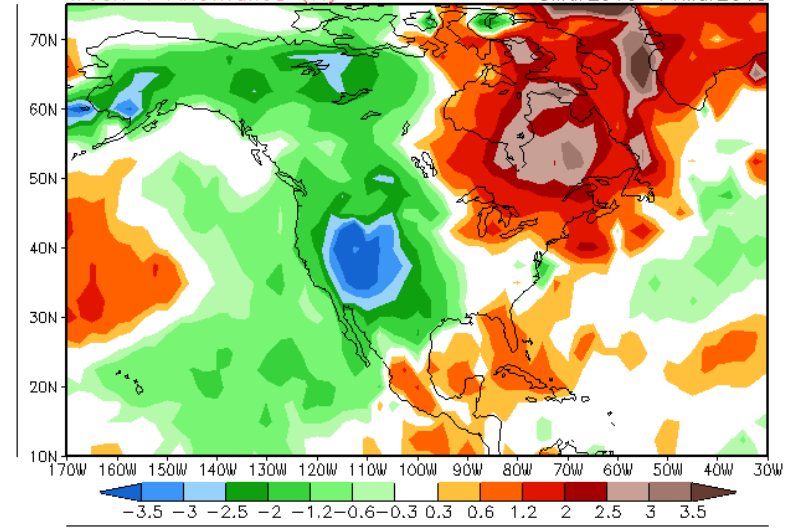
Week 3 Anomalies (K) 26Feb2013-4Mar2013



8-14 Day Anomalies (K) 20Feb2013-26Feb2013



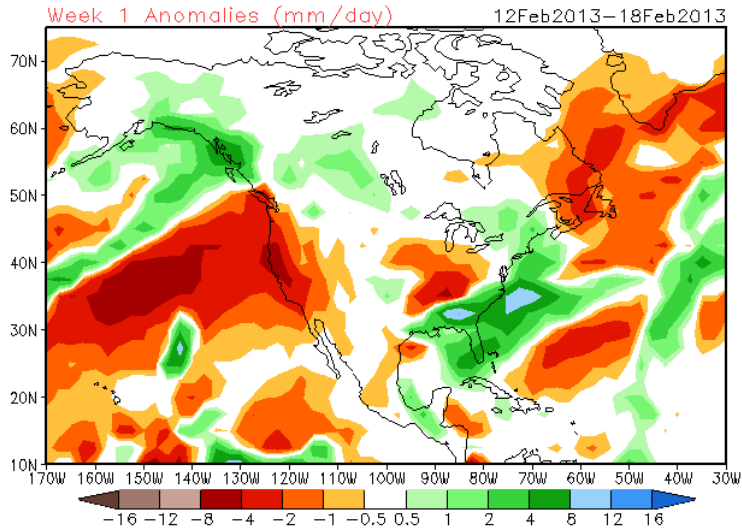
Week 4 Anomalies (K) 5Mar2013-11Mar2013



CFS U.S. Precipitation

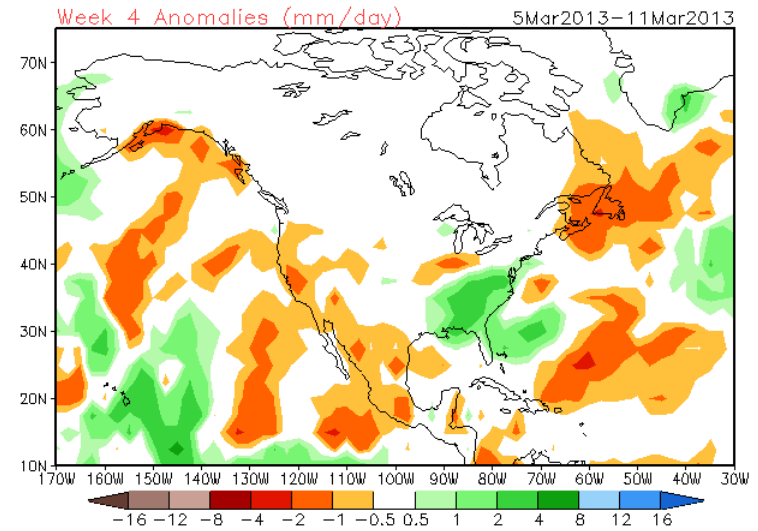
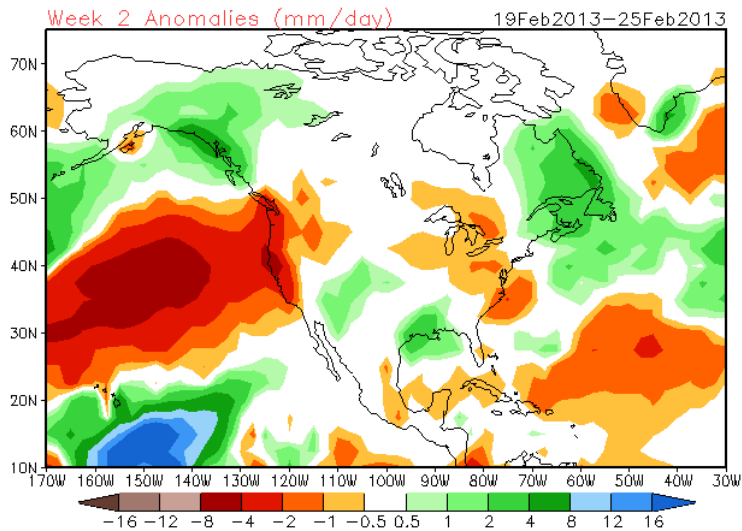
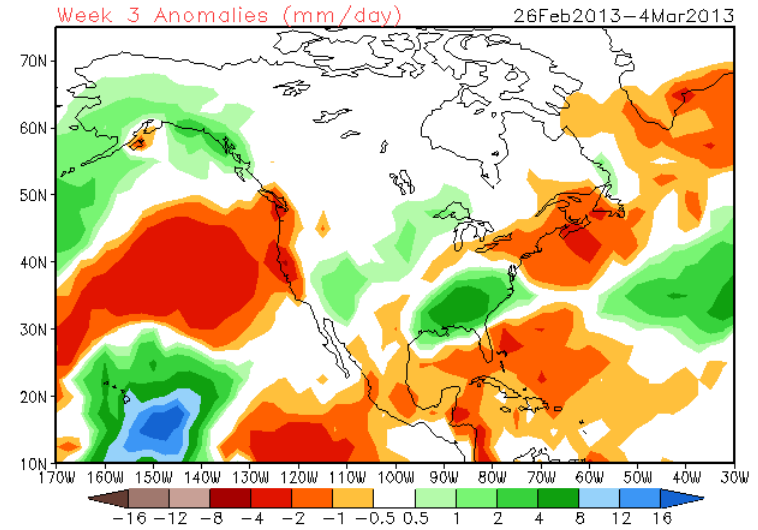
CFSv2 Weeks 1 & 2 Precipitation

16 Member Ensemble Mean Forecast from 11Feb2013



CFSv2 Weeks 3 & 4 Precipitation

16 Member Ensemble Mean Forecast from 11Feb2013

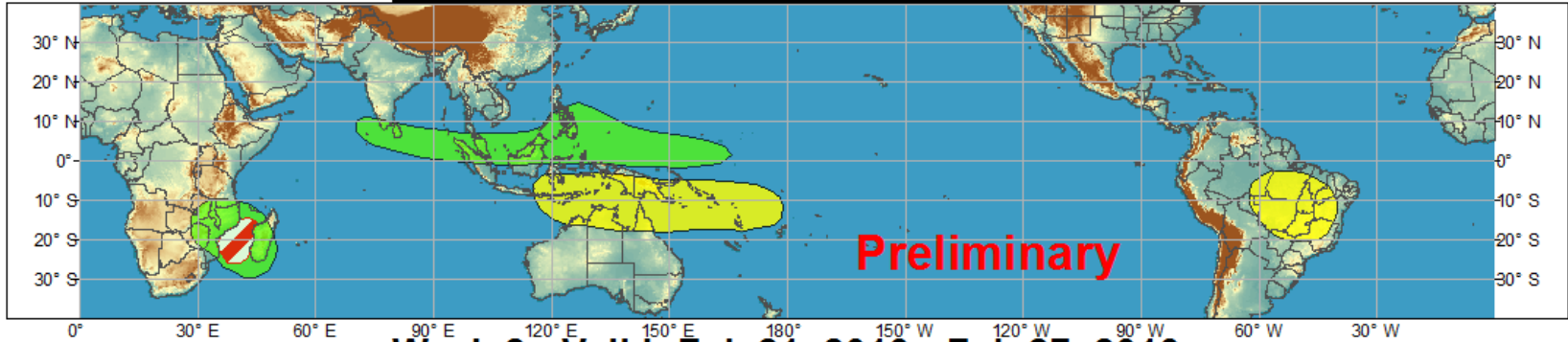




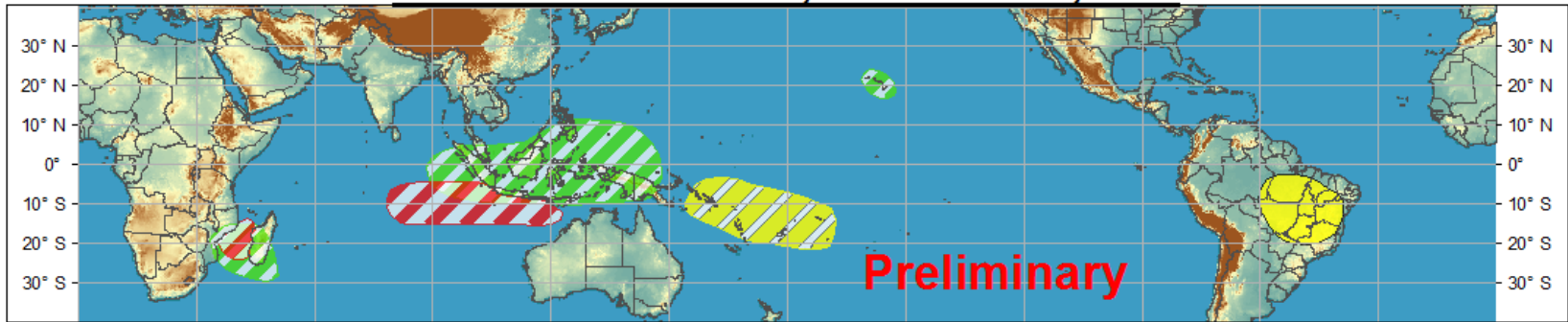
Global Tropical Hazards/Benefits Outlook - Climate Prediction Center



Week 1 - Valid: Feb 14, 2013 - Feb 20, 2013



Week 2 - Valid: Feb 21, 2013 - Feb 27, 2013



Confidence
High Moderate

Tropical Cyclone Formation



Development of a tropical cyclone that eventually reaches tropical storm/cyclone strength.

Above-average rainfall



Weekly total rainfall in the upper third of the historical range.

Below-average rainfall



Weekly total rainfall in the lower third of the historical range.

Above-normal temperatures



7-day mean temperatures in the upper third of the historical range.

Below-normal temperatures



7-day mean temperatures in the lower third of the historical range.

Produced: 02/12/2013

Forecaster: Gottschalck

Product is updated once per week. The product targets broad scale conditions integrated over a 7-day period for US interests only. Consult your local responsible forecast agency.

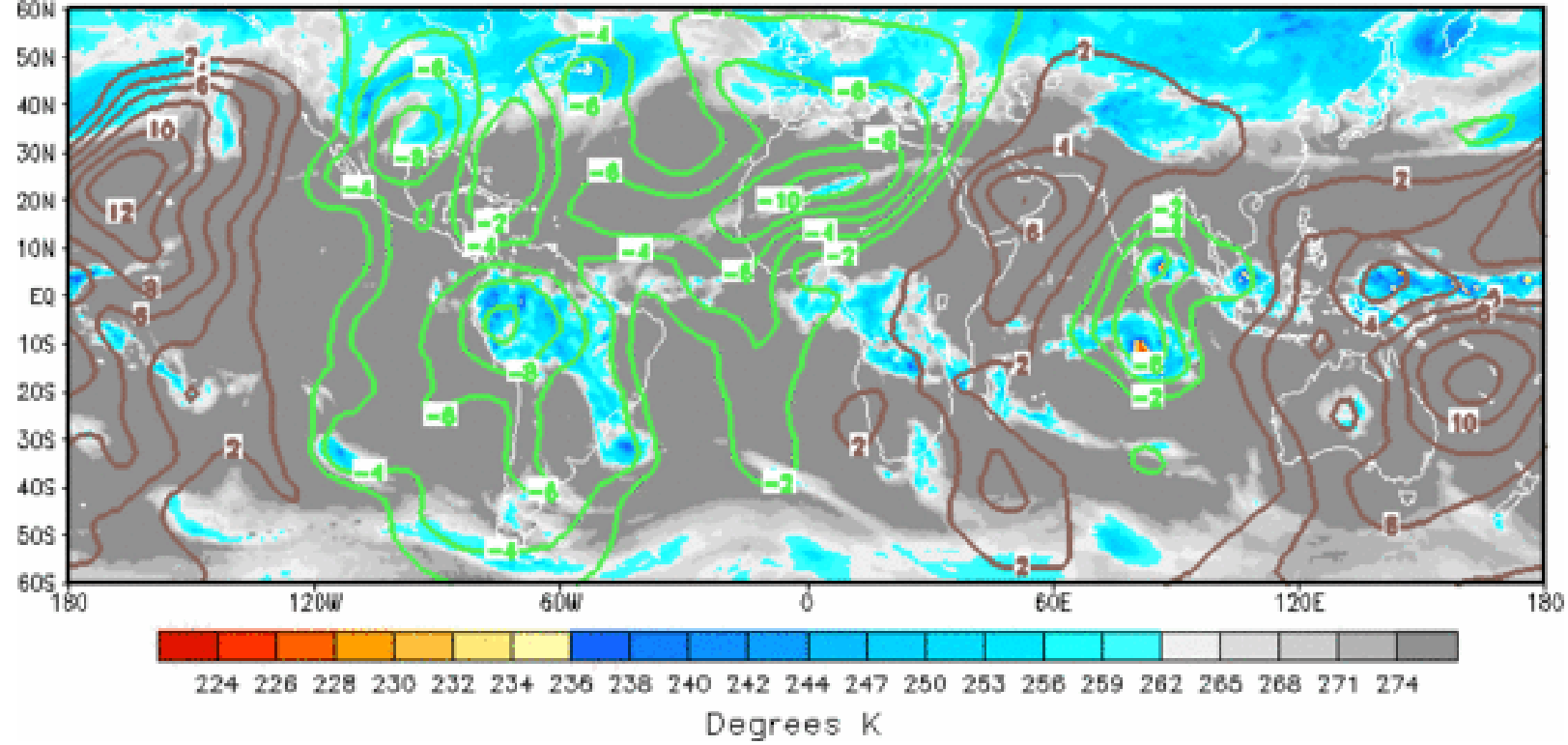


IR Satellite & 200-hpa Velocity Potential Anomalies

Green: Enhanced Divergence

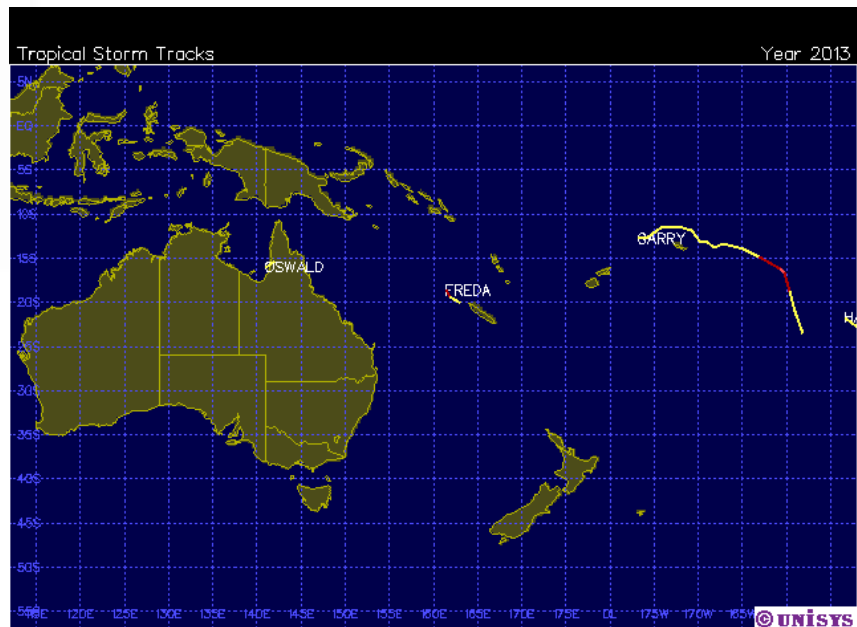
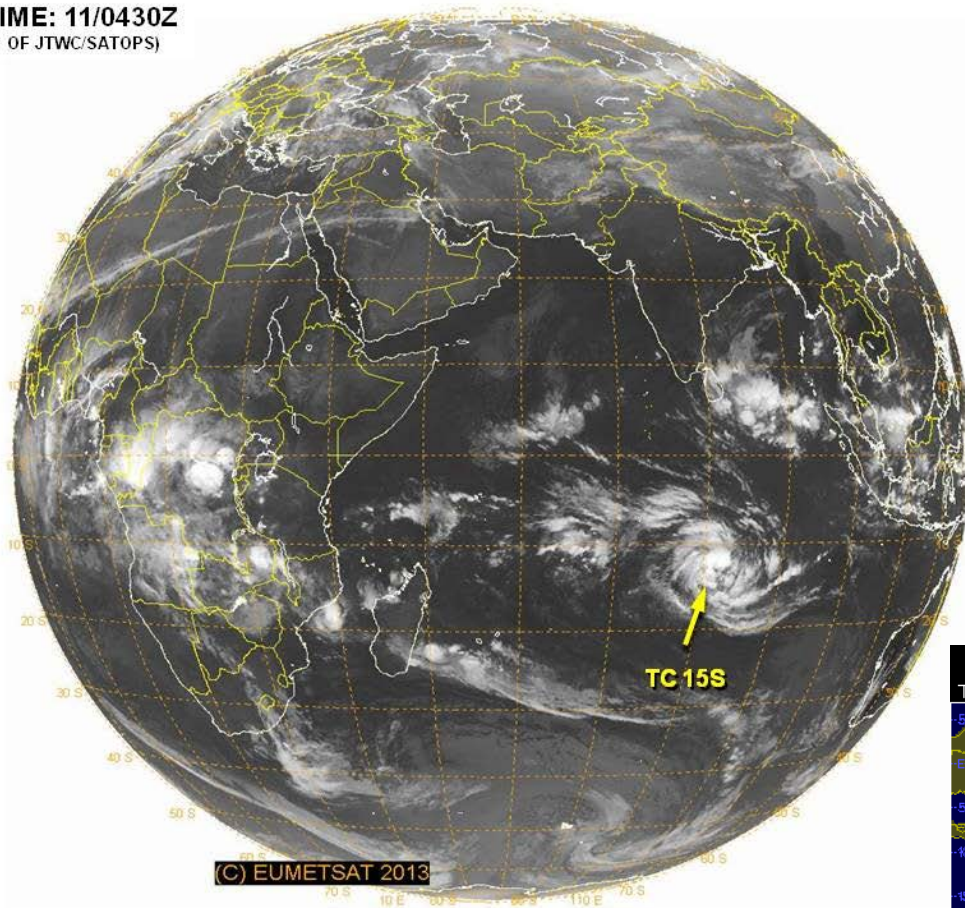
Brown: Enhanced Convergence

11 FEB 2013

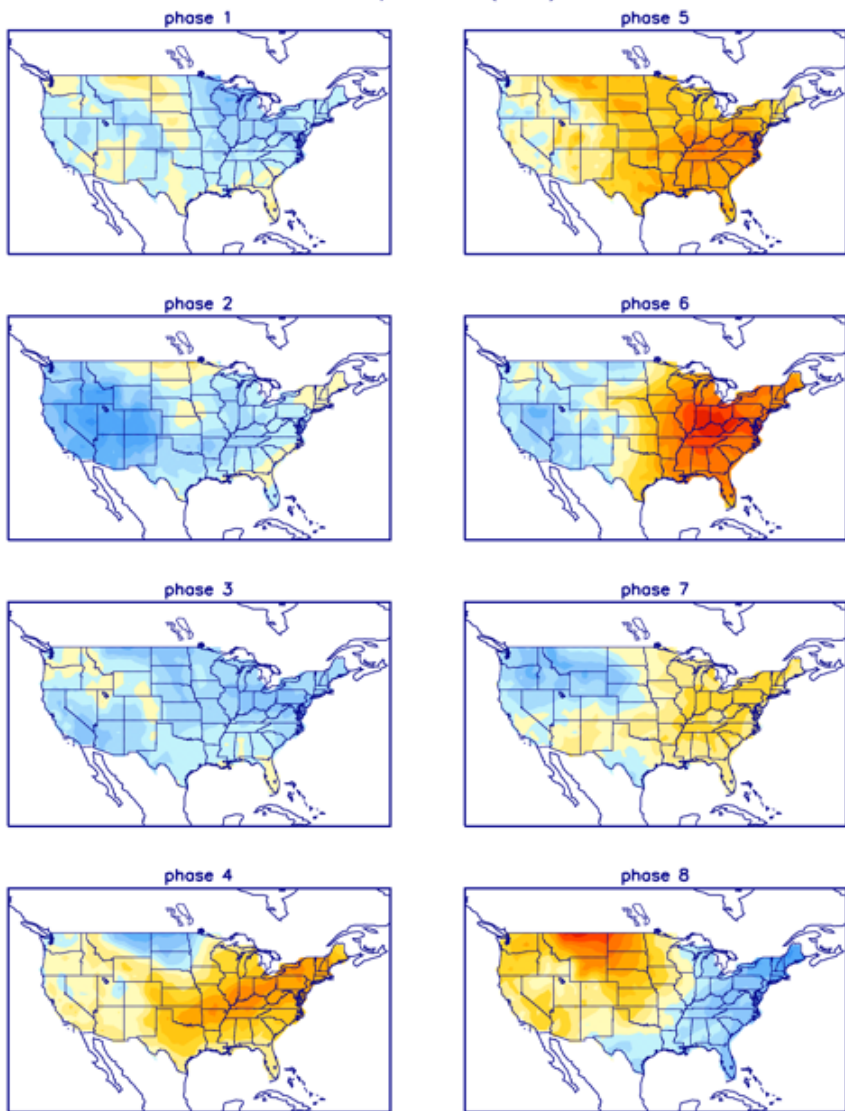


Tropical Cyclone Review

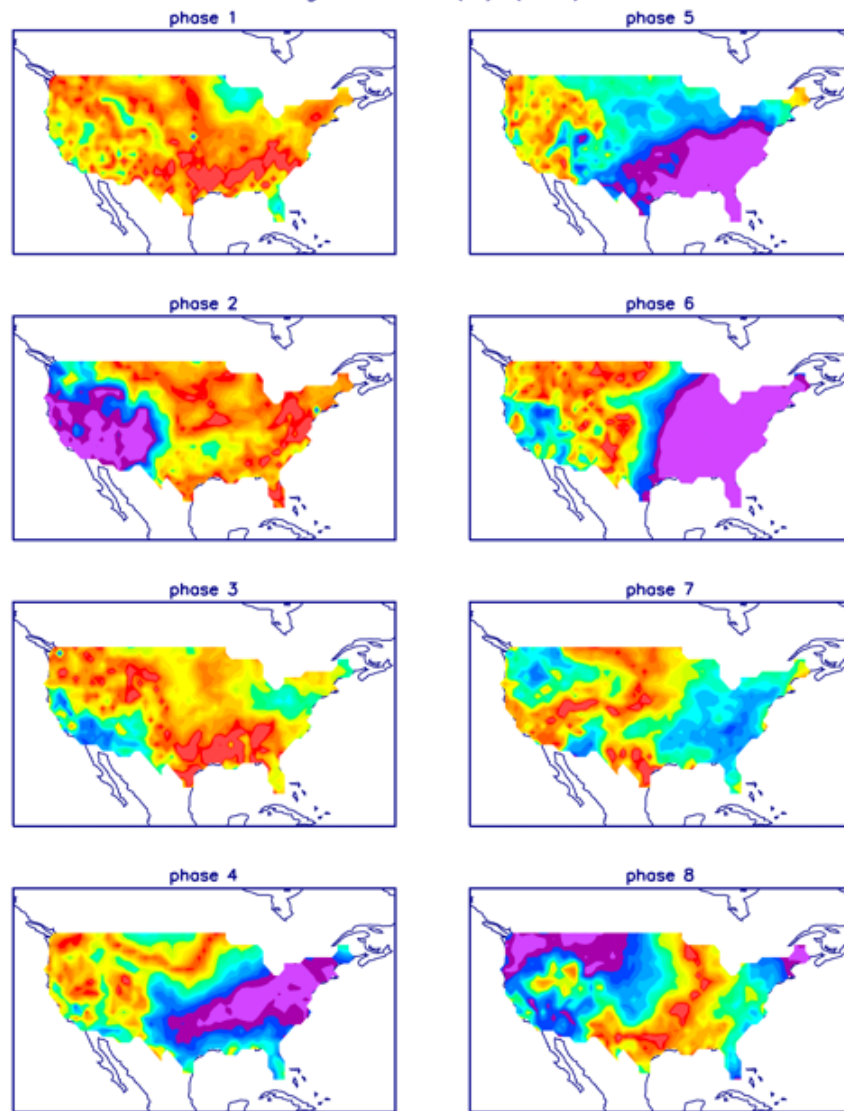
VALID TIME: 11/0430Z
(PRODUCT OF JTWC/SATOPS)



T composites (JFM)



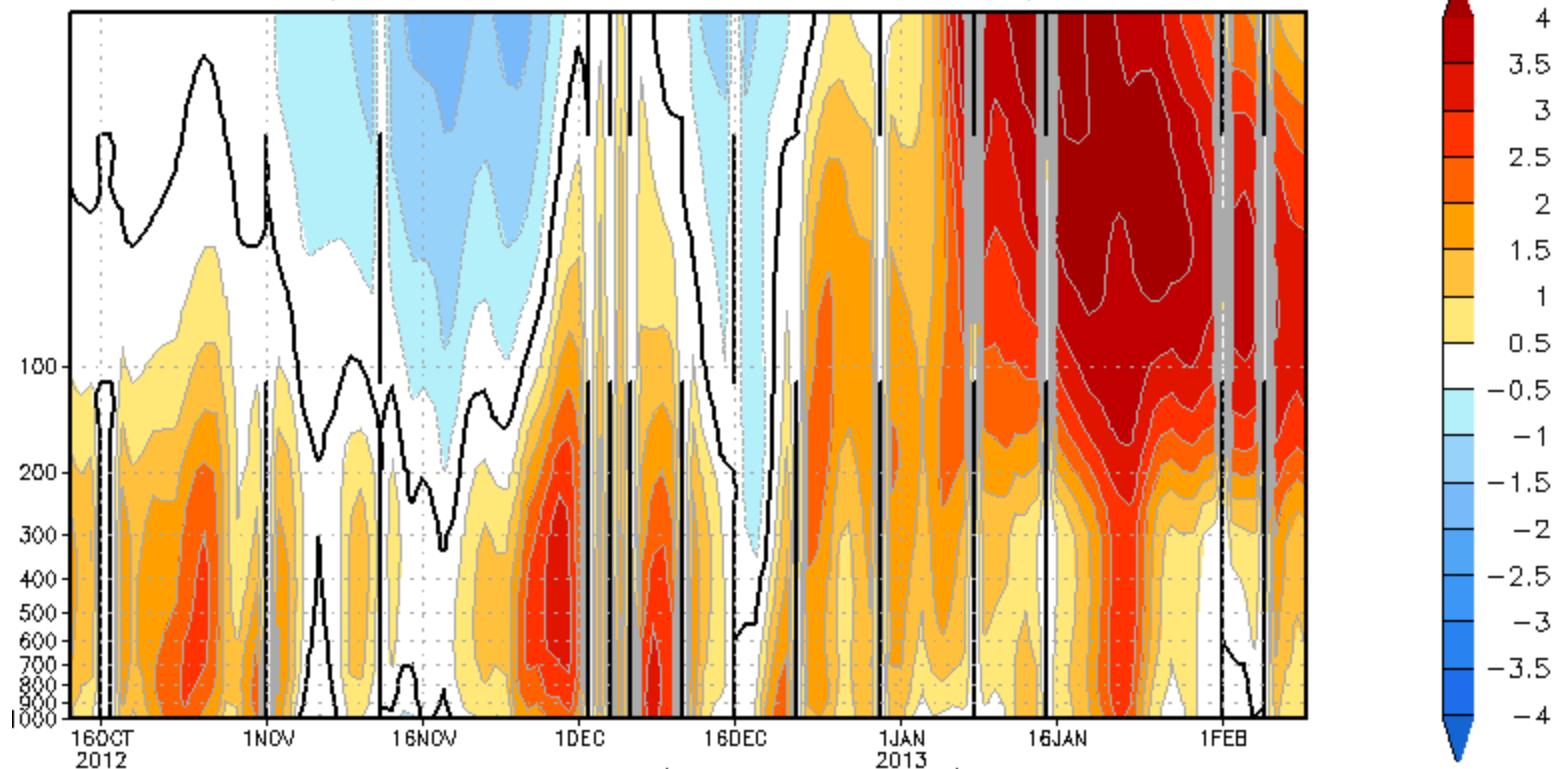
Significance (%) (JFM)



-3.0 -2.7 -2.4 -2.1 -1.8 -1.5 -1.2 -0.9 -0.6 -0.3 0.0 0.3 0.6 0.9 1.2 1.5 1.8 2.1 2.4 2.7 3.0

0.0 2.5 5.0 7.5 10.0 12.5 15.0 17.5 20.0 22.5 25.0 27.5 30.0 32.5 35.0 37.5 40.0 42.5 45.0 47.5 50.0

Normalized GPH anomaly (65°N–90°N)
(13Oct2012 – 09Feb2013)



A0 index (1000mb Z)

