

Global Tropics Hazards And Benefits Outlook

February 19, 2013

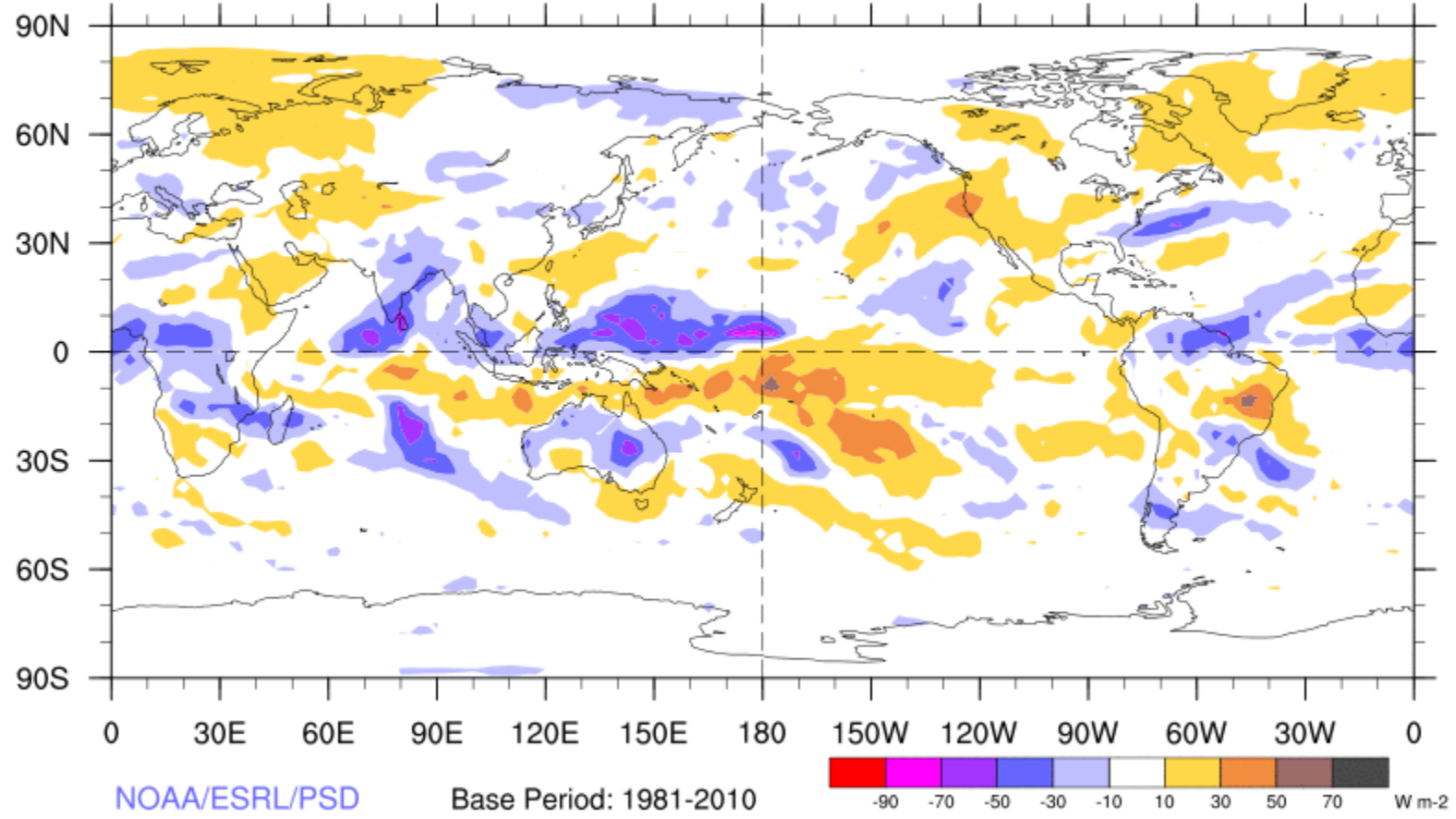
Jon Gottschalck

Outline

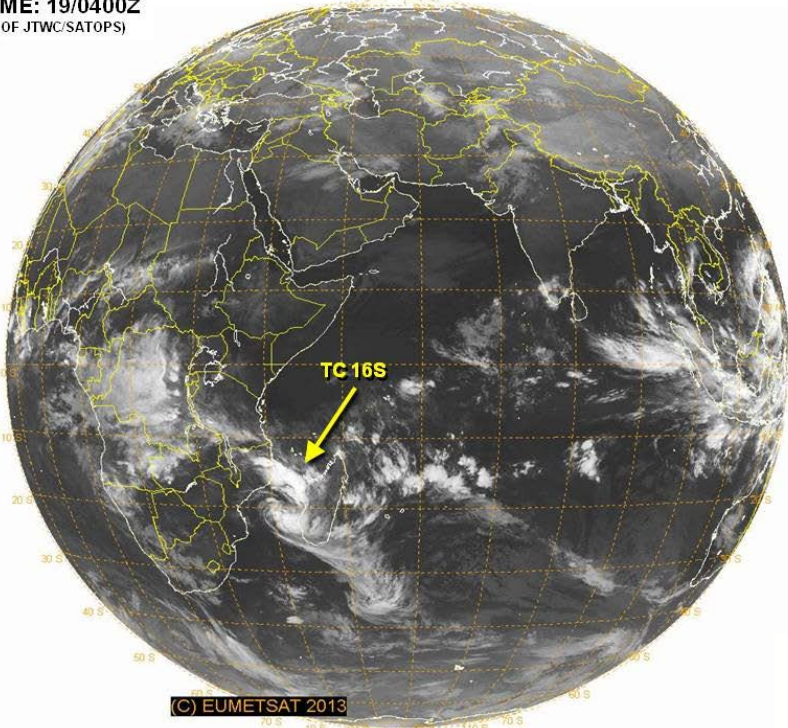
1. Review of Recent Conditions
2. Synopsis of Climate Modes
3. GTH Outlook and Forecast Discussion

7-Day Average OLR Anomaly

2013/02/11 - 2013/02/17

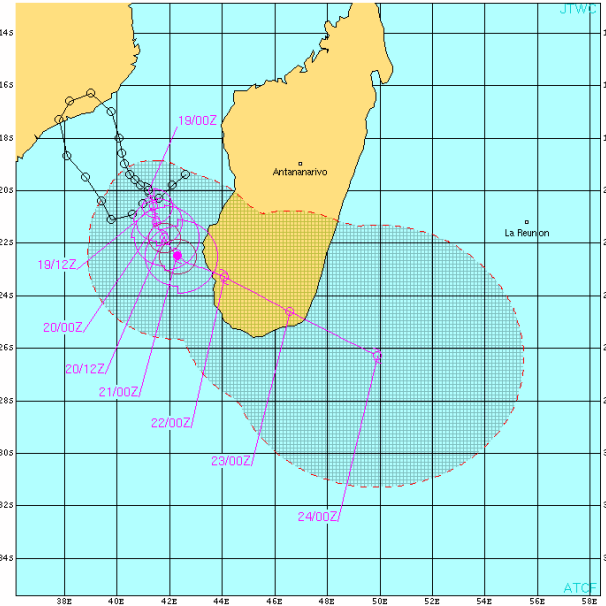
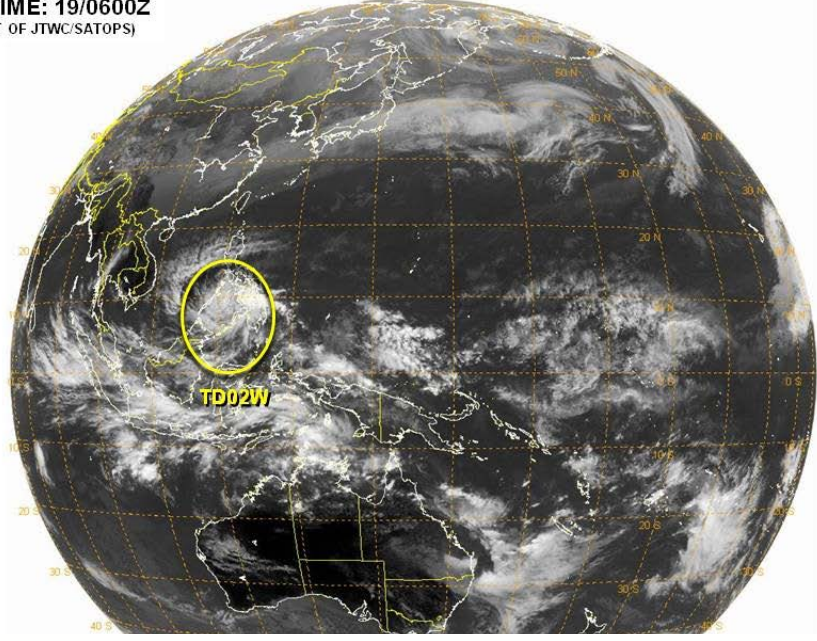


VALID TIME: 19/0400Z
(PRODUCT OF JTWC/SATOPS)



© EUMETSAT 2013

VALID TIME: 19/0600Z
(PRODUCT OF JTWC/SATOPS)

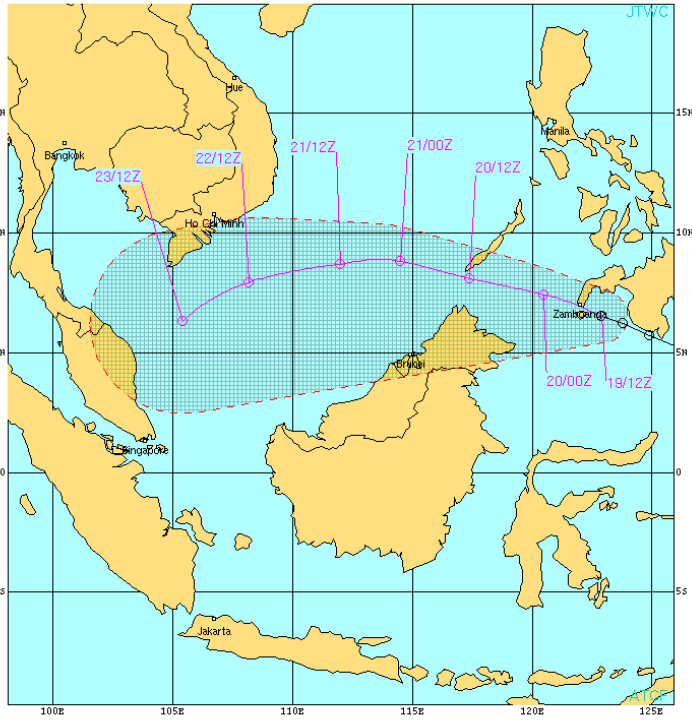


TROPICAL CYCLONE 16S (SIXTEEN) WARNING #1
 WFFS#1 PFTW 190800
 190000Z POSIT: NEAR 20 05 41 2E
 MOVING 105 DEGREES TRUE AT 03 KNOTS
 MAXIMUM SIGNIFICANT WAVE HEIGHT: 10 FEET
 19/00Z, WINDS 025 KTS, GUSTS TO 045 KTS
 19/12Z, WINDS 040 KTS, GUSTS TO 050 KTS
 20/00Z, WINDS 050 KTS, GUSTS TO 065 KTS
 20/12Z, WINDS 050 KTS, GUSTS TO 075 KTS
 21/00Z, WINDS 065 KTS, GUSTS TO 080 KTS
 22/00Z, WINDS 060 KTS, GUSTS TO 085 KTS
 23/00Z, WINDS 030 KTS, GUSTS TO 040 KTS
 24/00Z, WINDS 035 KTS, GUSTS TO 045 KTS

CPA TO:	NO	KTS
EUROPA_ISLAND	89	20/07Z

BEARING AND DISTANCE	DIR	DIST	TAV
EUROPA_ISLAND	051	34	34
EUROPA_ISLAND	099	110	48
EUROPA_ISLAND	308	228	72

○ LESS THAN 34 KNOTS
 ◐ 34-63 KNOTS
 ◑ MORE THAN 63 KNOTS
 PAST 6 HOURLY CYCLONE POSITS IN BLACK
 FORECAST CYCLONE POSITS IN COLOR



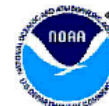
TROPICAL DEPRESSION 02W (TWO) WARNING #8
 WFFS#8 PFTW 191500
 191200Z POSIT: NEAR 6 5N 122 3E
 MOVING 230 DEGREES TRUE AT 03 KNOTS
 MAXIMUM SIGNIFICANT WAVE HEIGHT: 9 FEET
 19/12Z, WINDS 025 KTS, GUSTS TO 035 KTS
 20/00Z, WINDS 025 KTS, GUSTS TO 035 KTS
 20/12Z, WINDS 025 KTS, GUSTS TO 035 KTS
 21/00Z, WINDS 030 KTS, GUSTS TO 040 KTS
 21/12Z, WINDS 030 KTS, GUSTS TO 040 KTS
 22/12Z, WINDS 025 KTS, GUSTS TO 035 KTS
 23/12Z, WINDS 020 KTS, GUSTS TO 030 KTS

CPA TO:	NO	KTS
HO_CHI MINH_CITY	194	22/14Z

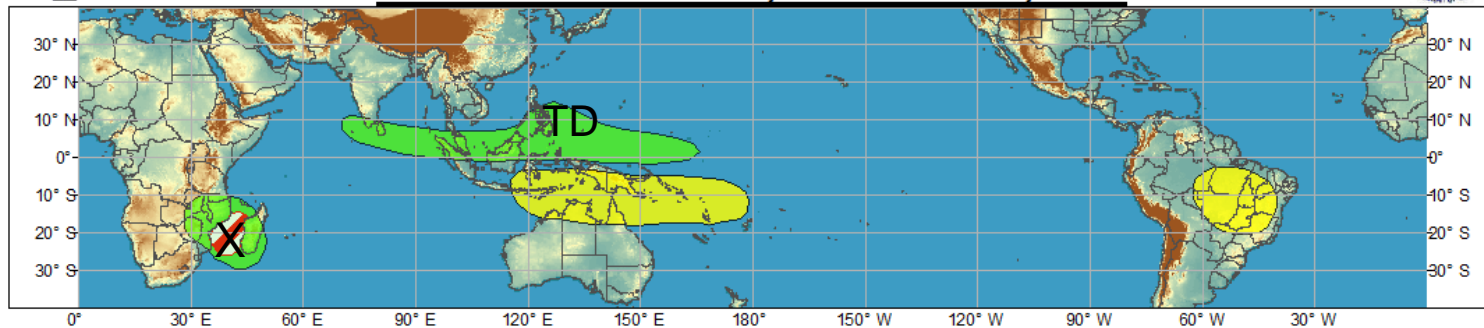
BEARING AND DISTANCE	DIR	DIST	TAV
HO_CHI MINH_CITY	111	(NR)	45
HO_CHI MINH_CITY	153	195	72

○ LESS THAN 34 KNOTS
 ◐ 34-63 KNOTS
 ◑ MORE THAN 63 KNOTS
 PAST 6 HOURLY CYCLONE POSITS IN BLACK
 FORECAST CYCLONE POSITS IN COLOR

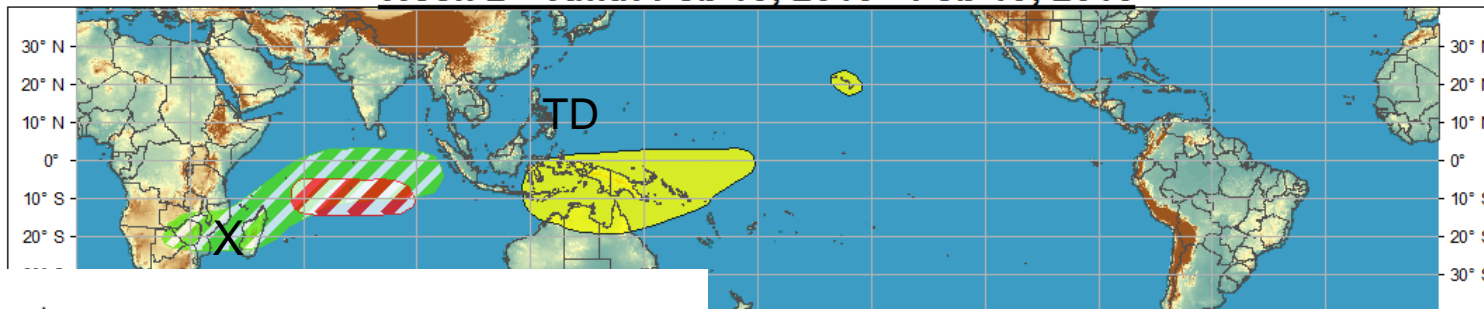




Week 1 - Valid: Feb 13, 2013 - Feb 19, 2013

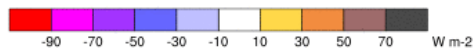
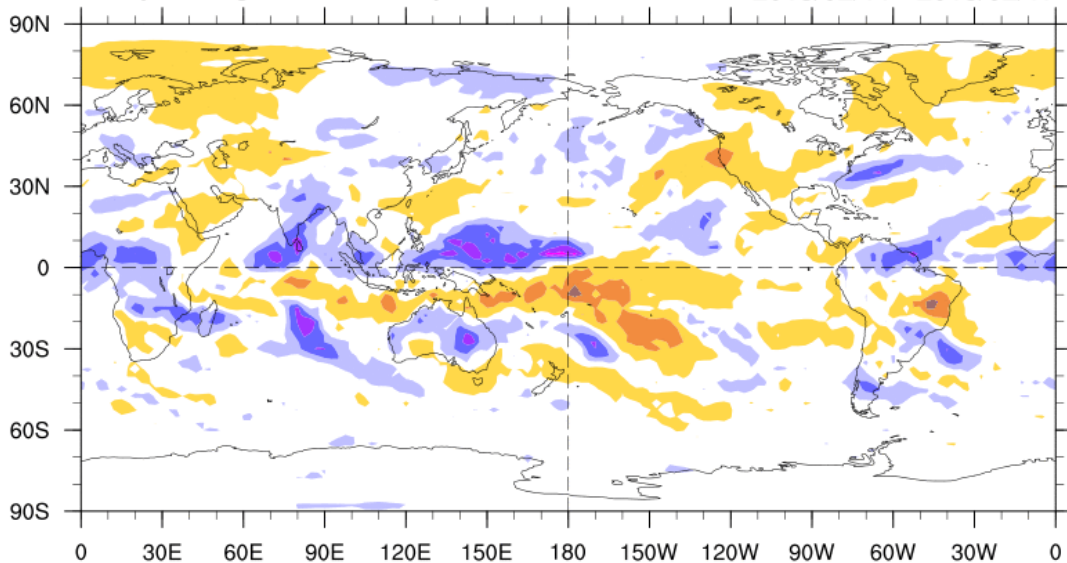


Week 2 - Valid: Feb 13, 2013 - Feb 19, 2013



7-Day Average OLR Anomaly

2013/02/11 - 2013/02/17



Outlook
Review

Synopsis of Climate Modes

ENSO:

- ENSO-neutral conditions are favored to continue through Northern Hemisphere spring 2013

MJO and other subseasonal tropical variability:

- The MJO remained active with the enhanced convection becoming organized over the Maritime continent.
- Model MJO index forecasts show gradual eastward propagation with a decrease in amplitude over the next two weeks with the enhanced phase centered over the Maritime continent.

Extratropics:

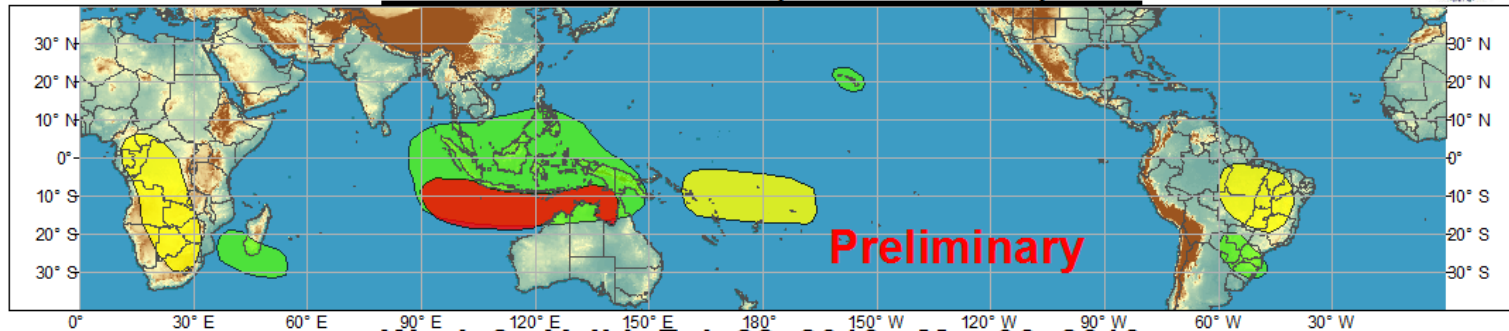
- AO index forecast to remain negative over the next two weeks
- MJO extratropical impacts would favor higher heights across the eastern U.S. but will be fighting –AO, blocking
- Most robust signal would be for elevated chances of above normal temperatures in the east
- The MJO would favor above-median precipitation across the lower Midwest, Ohio and Tennessee Valleys in early March



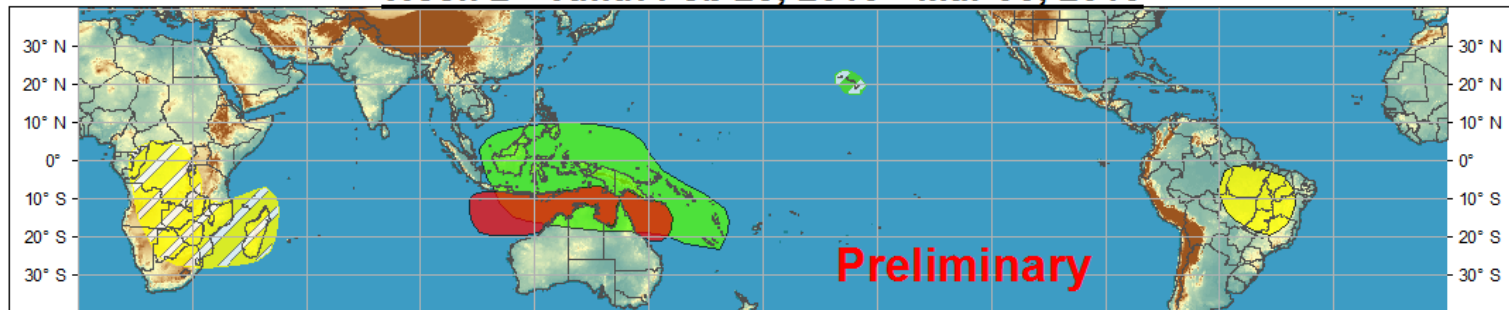
Global Tropical Hazards/Benefits Outlook - Climate Prediction Center



Week 1 - Valid: Feb 21, 2013 - Feb 27, 2013



Week 2 - Valid: Feb 28, 2013 - Mar 06, 2013



Produced: 02/19/2013

Forecaster: Gottschalck

Confidence		
High	Moderate	
		Tropical Cyclone Formation Development of a tropical cyclone that eventually reaches tropical storm/cyclone strength.
		Above-average rainfall Weekly total rainfall in the upper third of the historical range.
		Below-average rainfall Weekly total rainfall in the lower third of the historical range.
		Above-normal temperatures 7-day mean temperatures in the upper third of the historical range.
		Below-normal temperatures 7-day mean temperatures in the lower third of the historical range.

Product is updated once per week. The product targets broad scale conditions integrated over a 7-day period for US interests only. Consult your local responsible forecast agency.

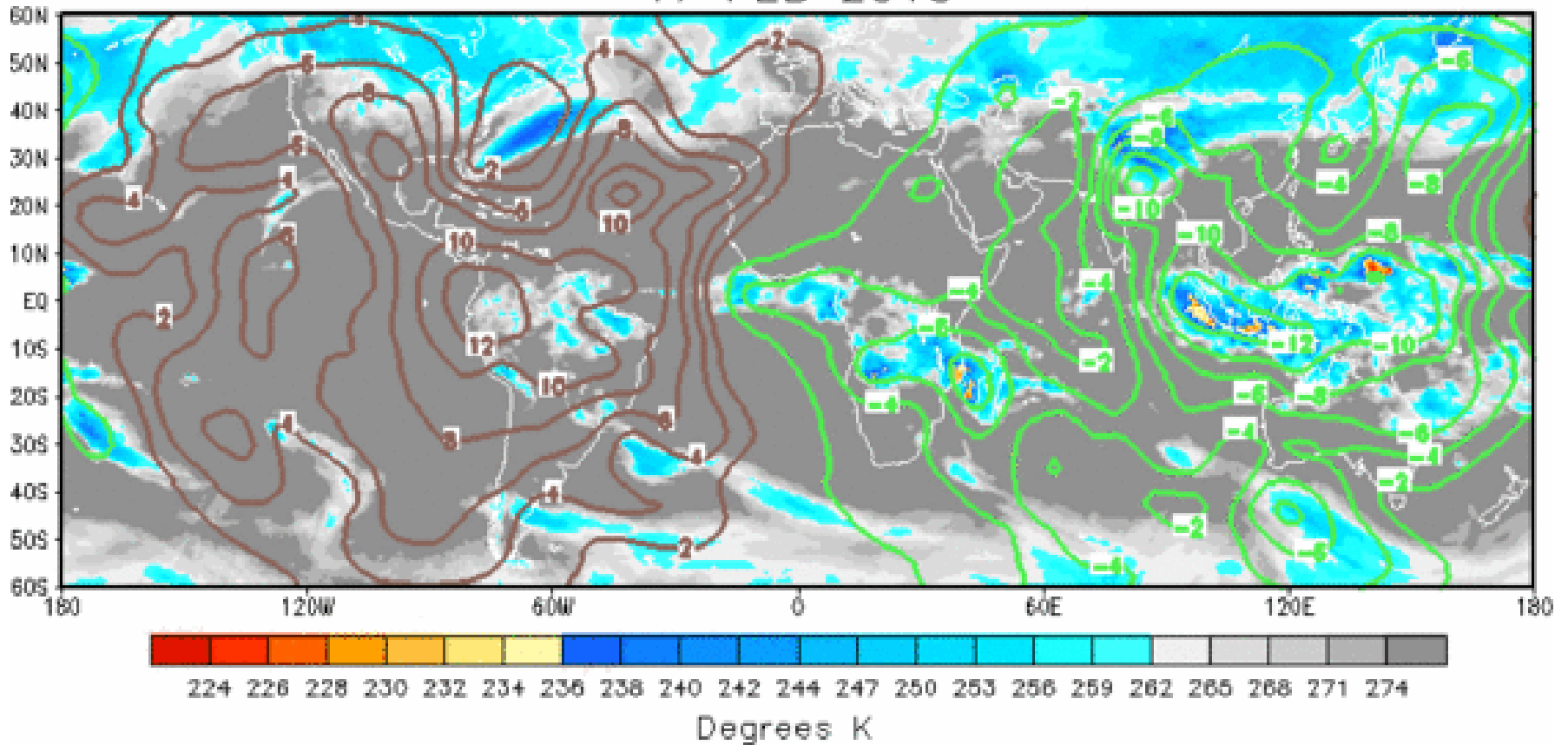


IR Satellite & 200-hpa Velocity Potential Anomalies

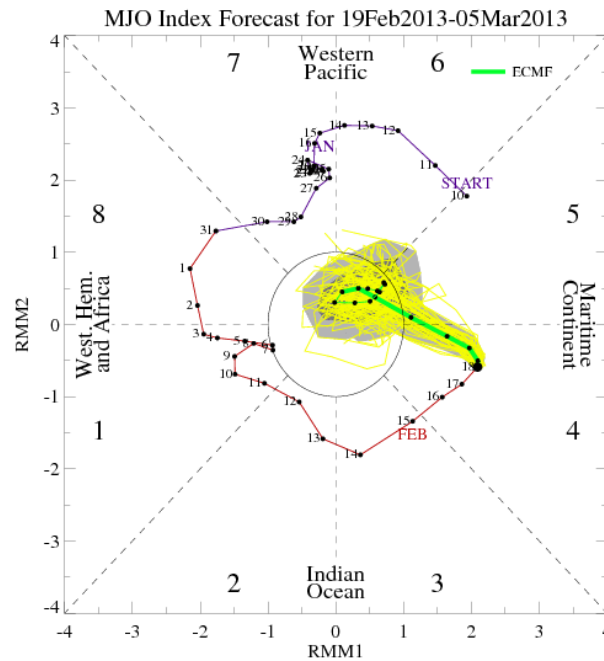
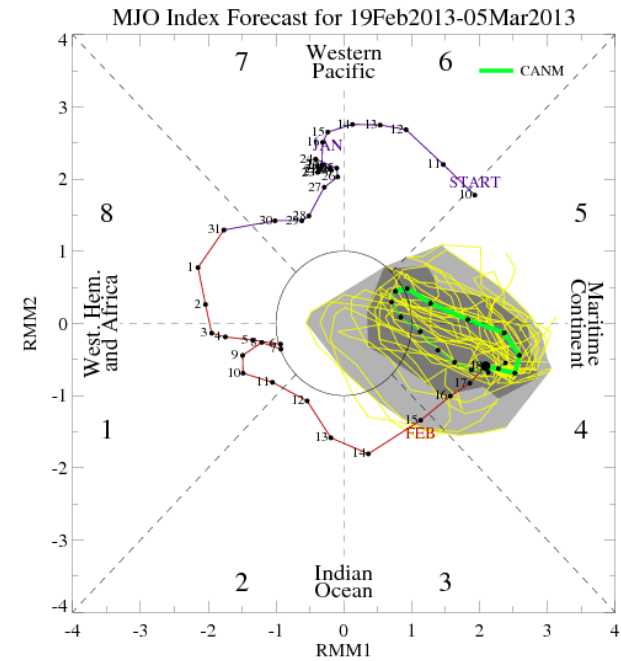
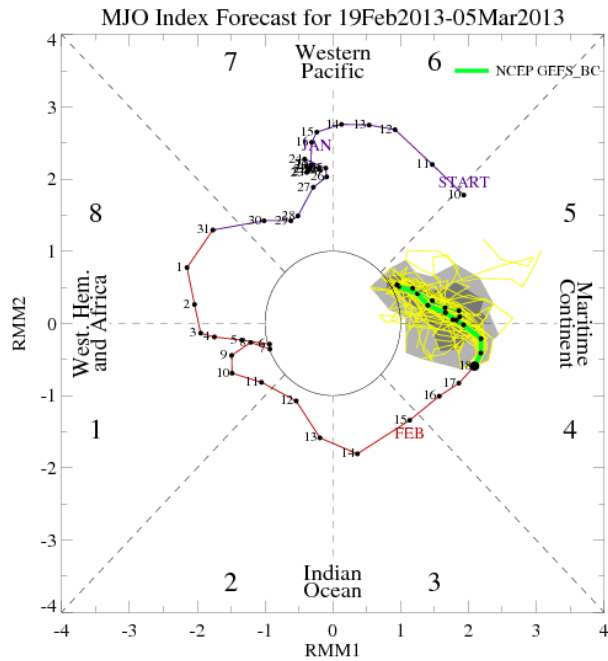
Green: Enhanced Divergence

Brown: Enhanced Convergence

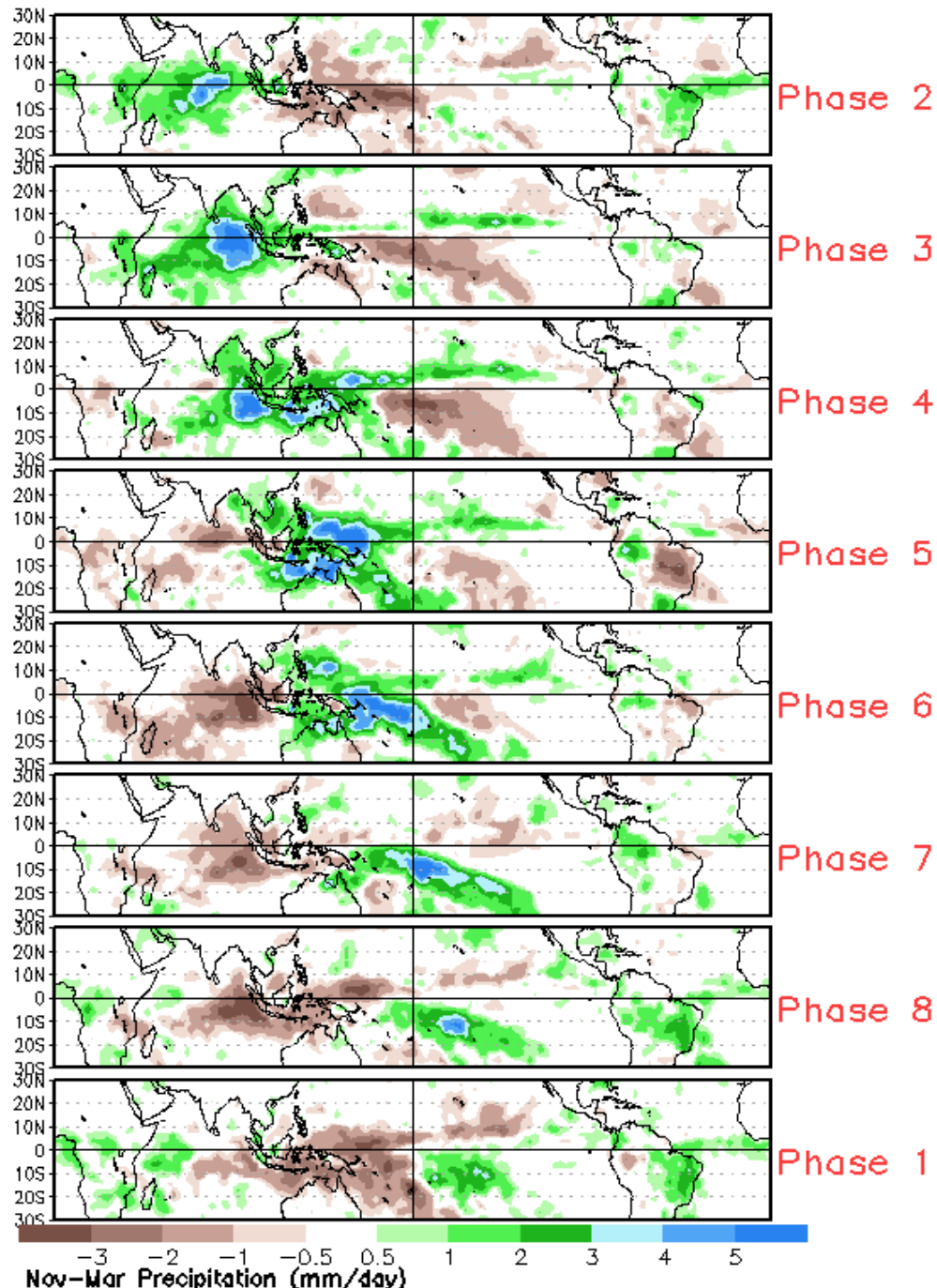
17 FEB 2013



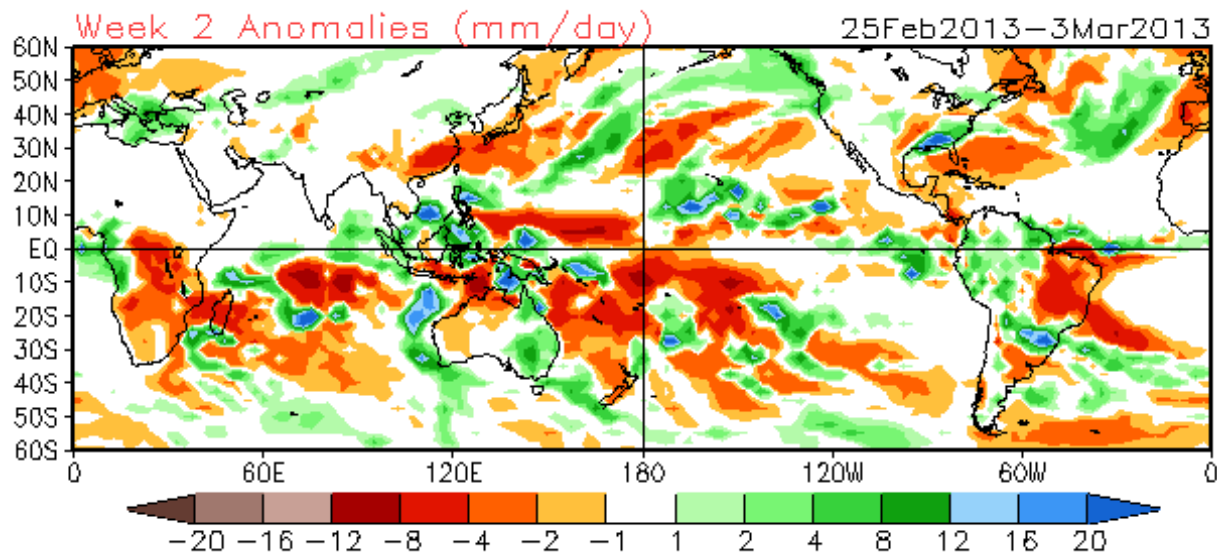
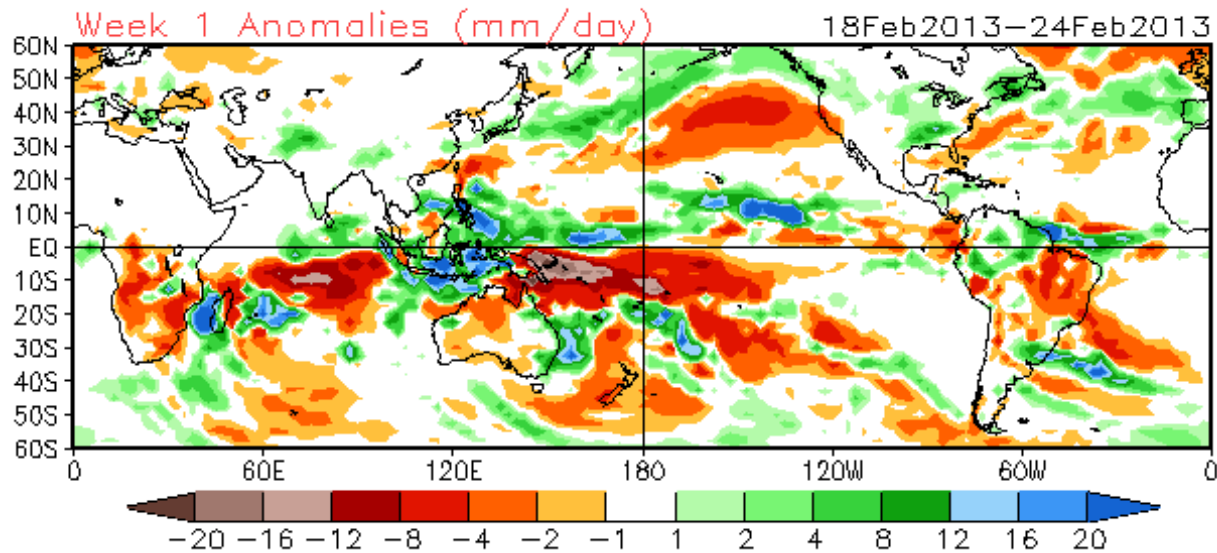
MJO Observation/Forecast



Average Conditions when the MJO is present (Nov-Mar)

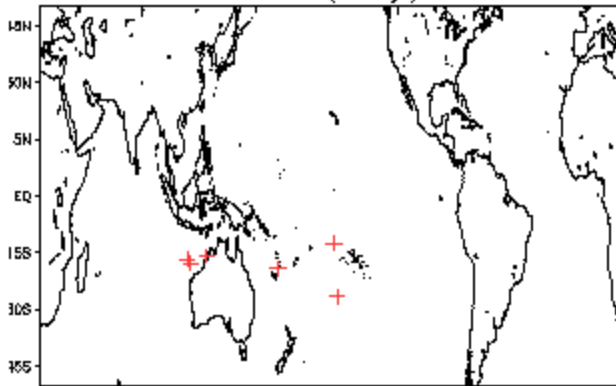


CFSv2 Weeks 1 & 2 Precipitation
16 Member Ensemble Mean Forecast from 17Feb2013

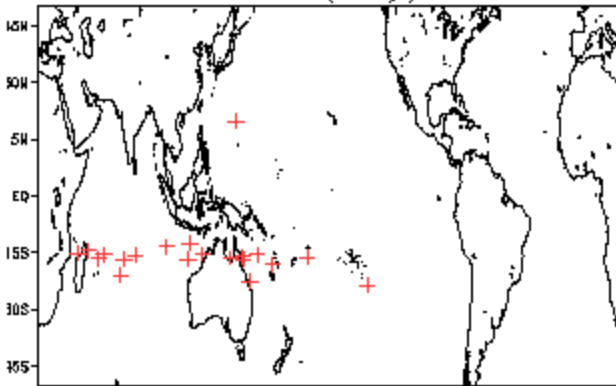


February Tropical Storm Formation by MJO phase

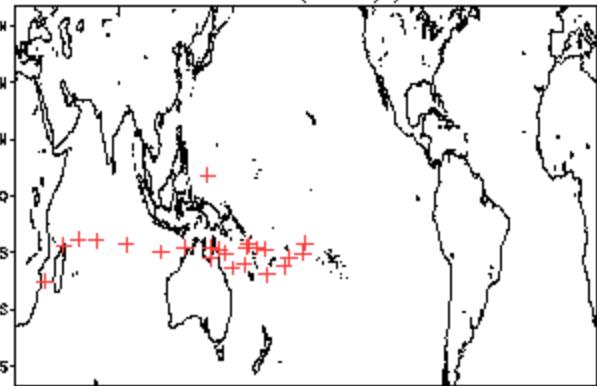
Phase 1 (41 days) 7 storms



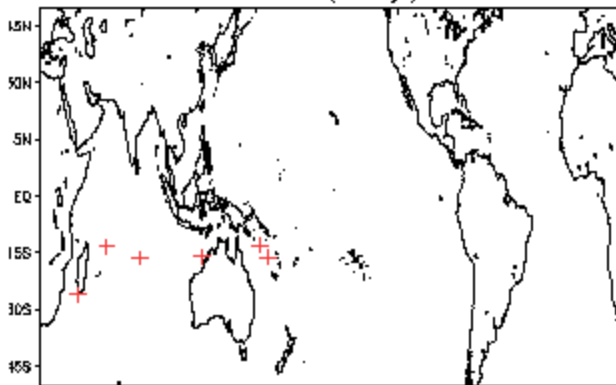
Phase 4 (82 days) 21 storms



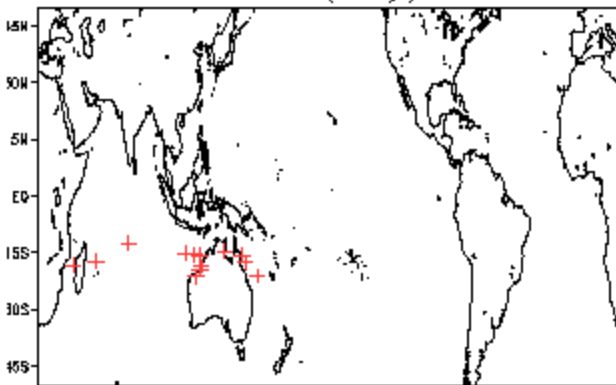
Phase 7 (125 days) 24 storms



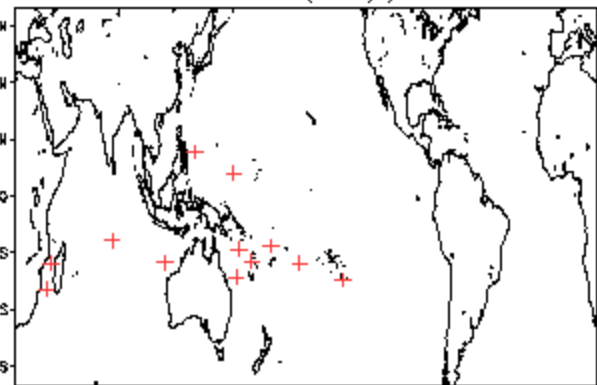
Phase 2 (51 days) 7 storms



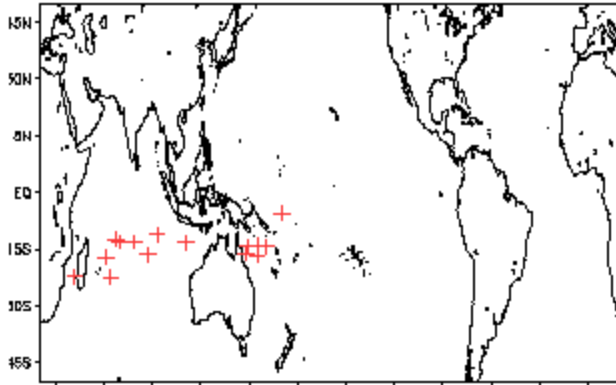
Phase 5 (70 days) 14 storms



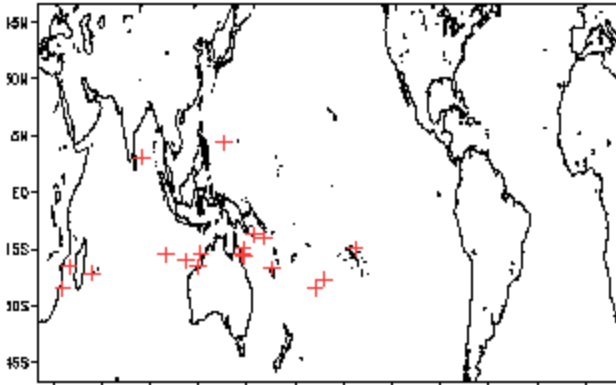
Phase 8 (84 days) 13 storms



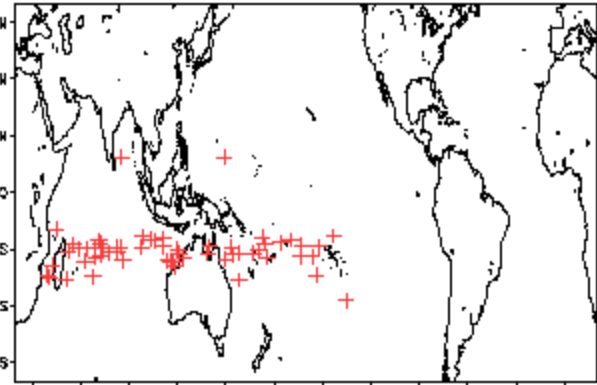
Phase 3 (89 days) 16 storms



Phase 6 (92 days) 19 storms

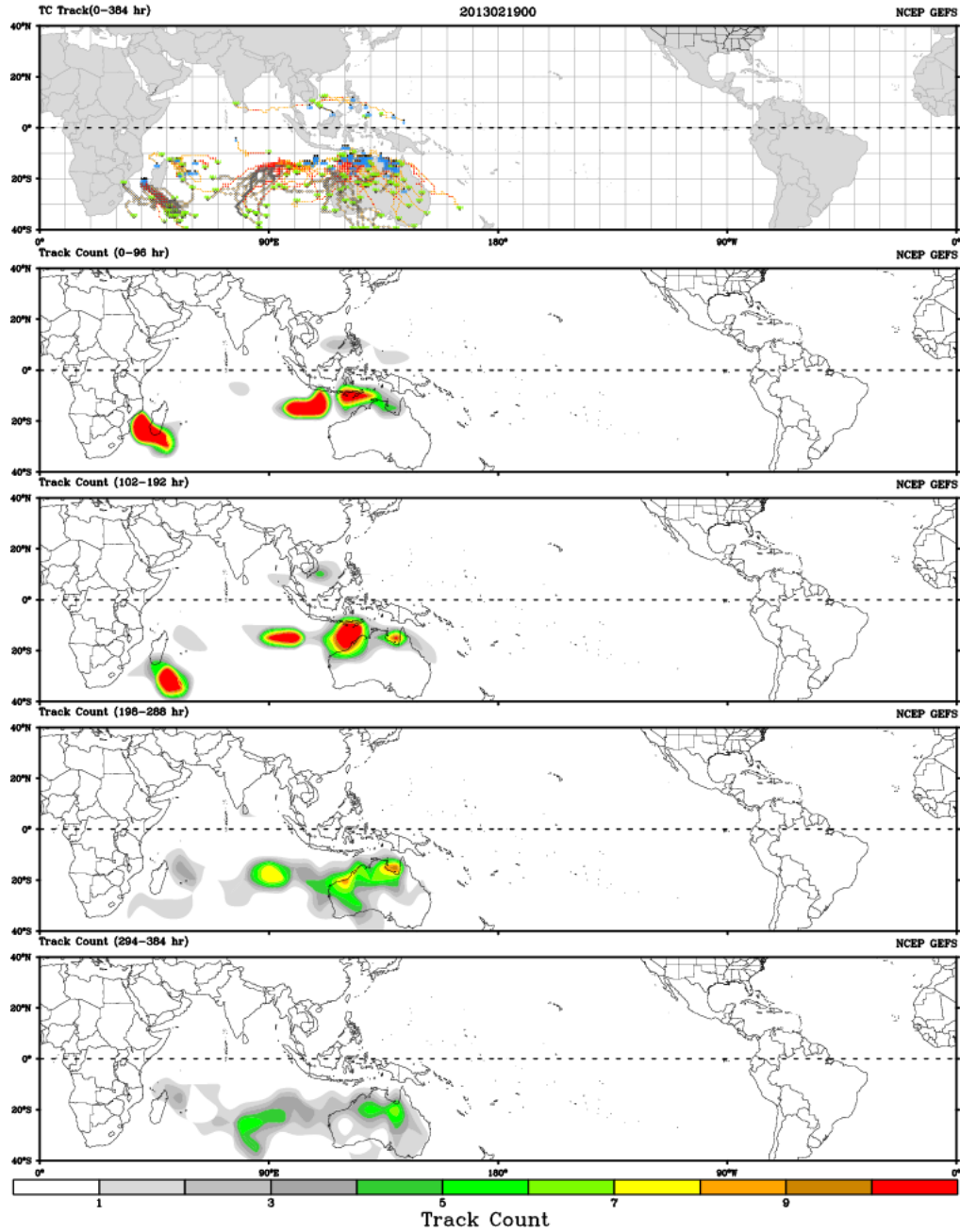


Null (308 days) 60 storms

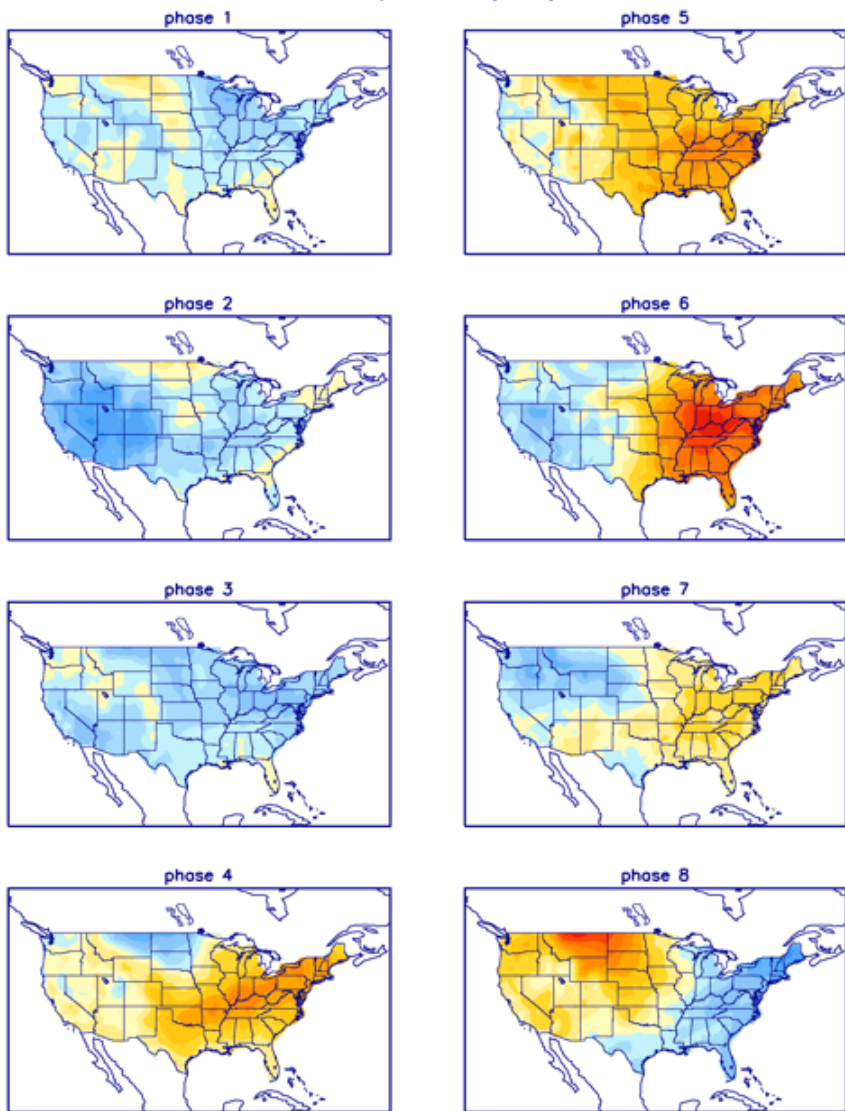


GFS Tropical Cyclone Guidance

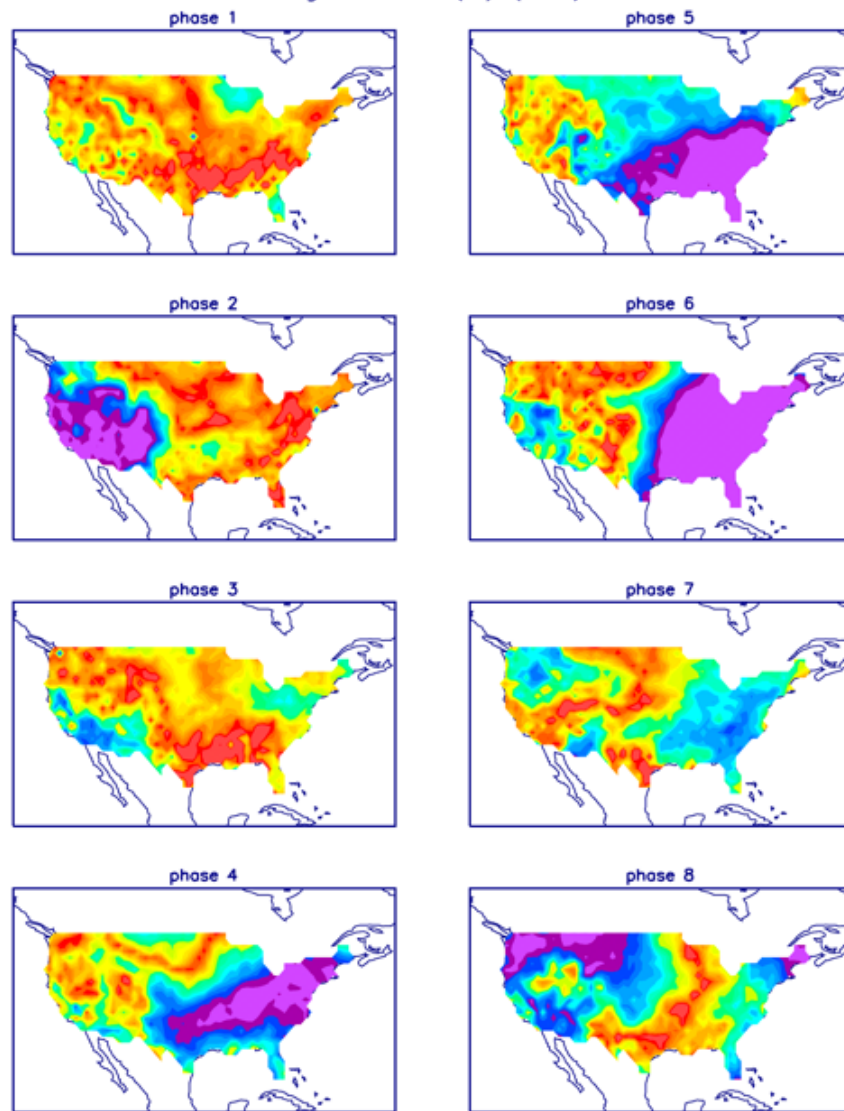
CWB TC Tracker for NCEP GEFS (AllCriteria)



T composites (JFM)



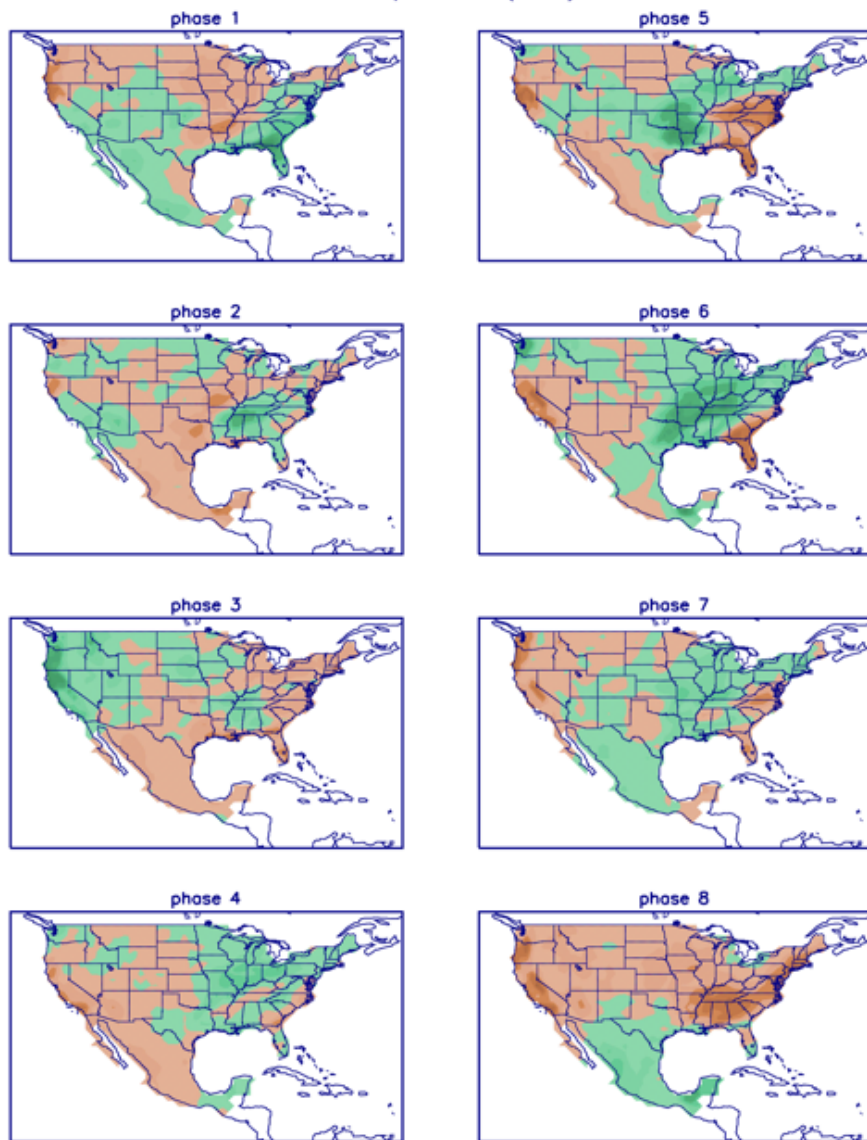
Significance (%) (JFM)



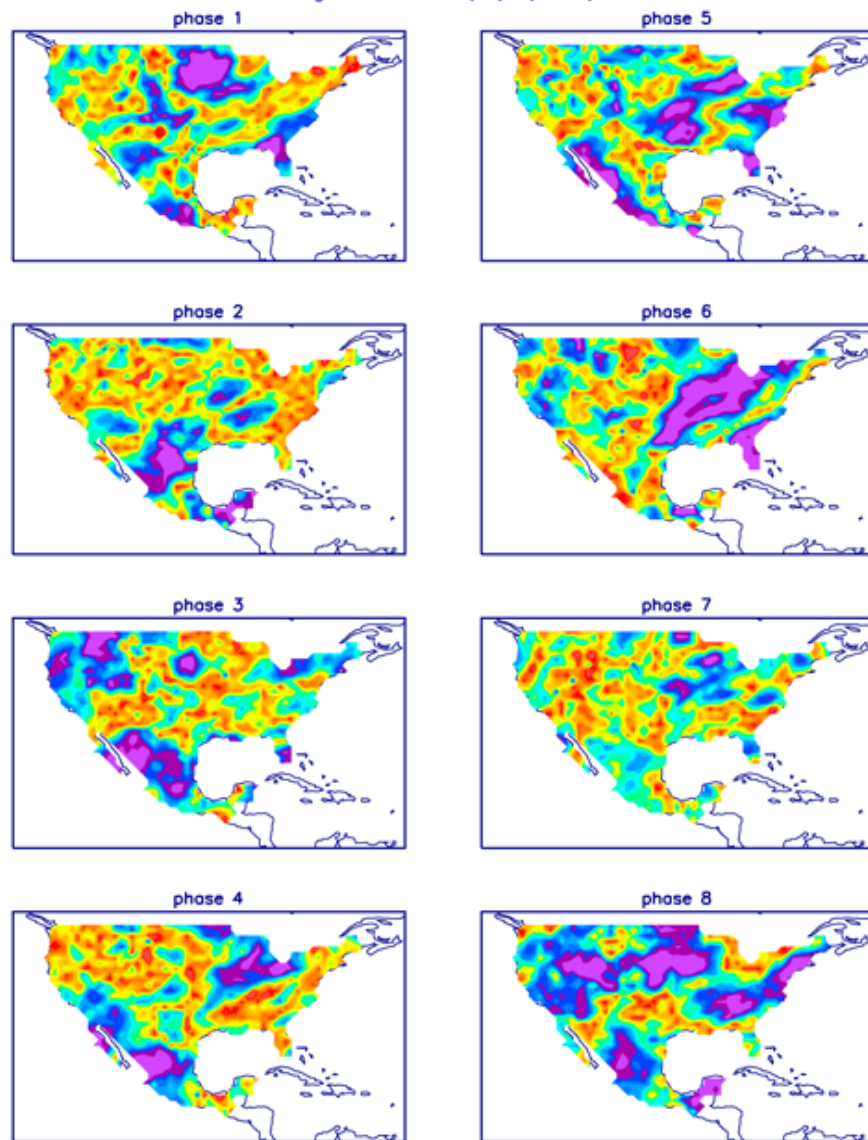
-3.0 -2.7 -2.4 -2.1 -1.8 -1.5 -1.2 -0.9 -0.6 -0.3 0.0 0.3 0.6 0.9 1.2 1.5 1.8 2.1 2.4 2.7 3.0

0.0 2.5 5.0 7.5 10.0 12.5 15.0 17.5 20.0 22.5 25.0 27.5 30.0 32.5 35.0 37.5 40.0 42.5 45.0 47.5 50.0

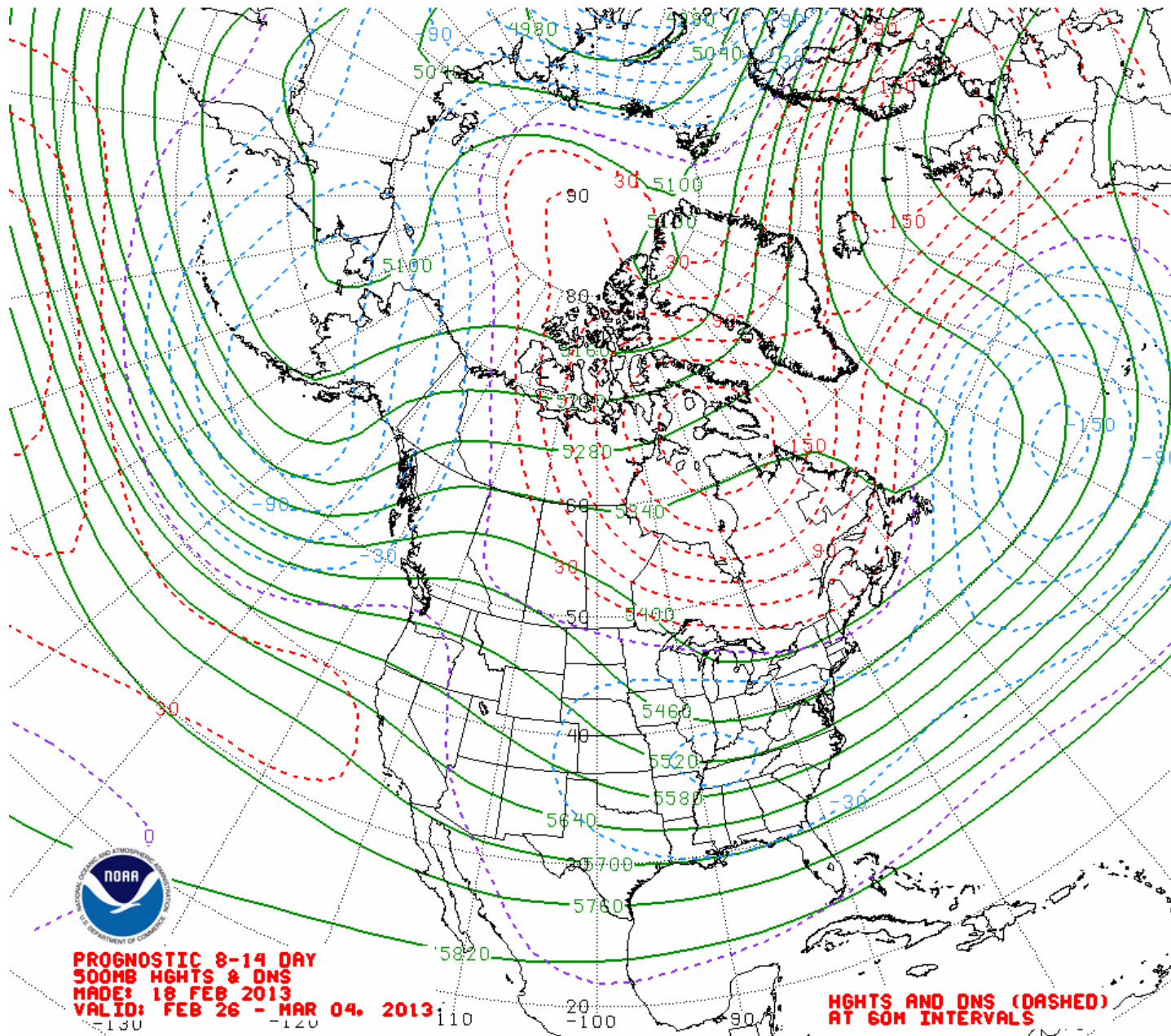
P composites (JFM)



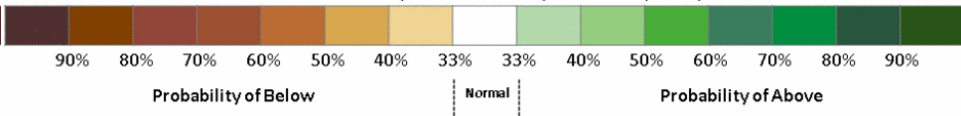
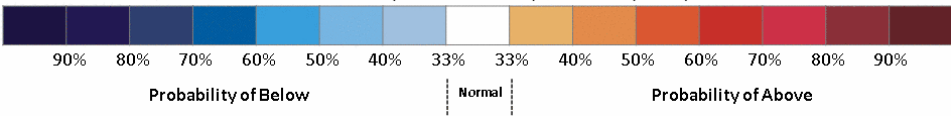
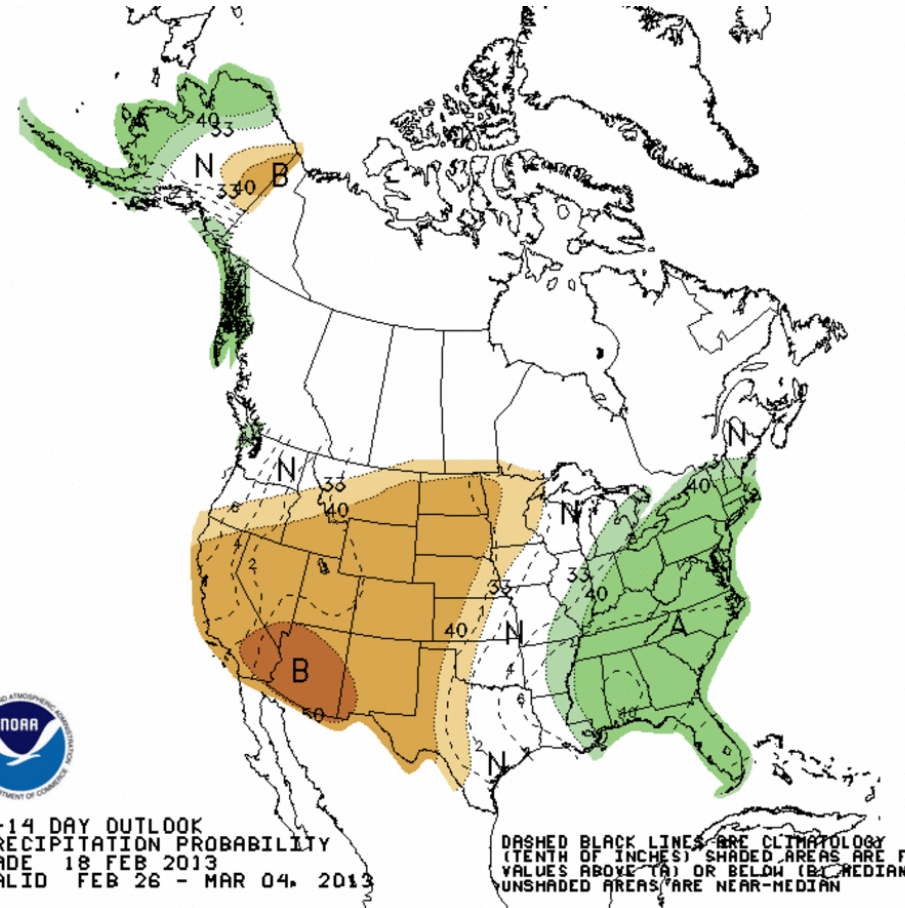
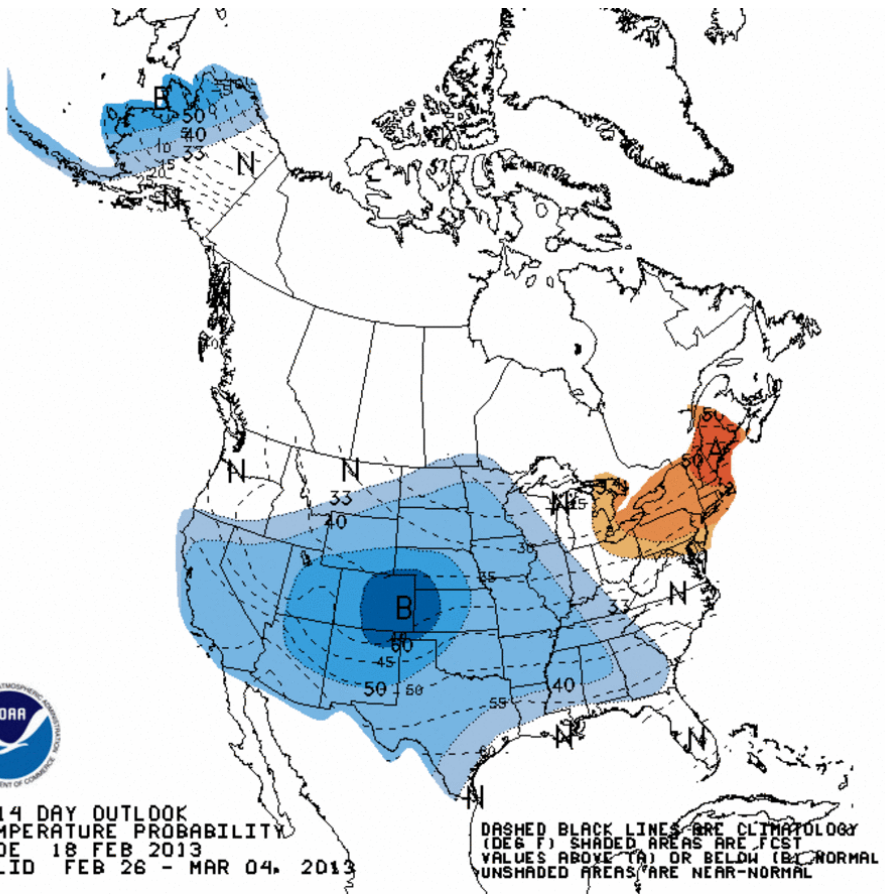
Significance (%) (JFM)



Week 2 500-hPa Manual Chart

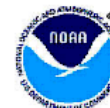


Week 2 – Temperature and Precipitation

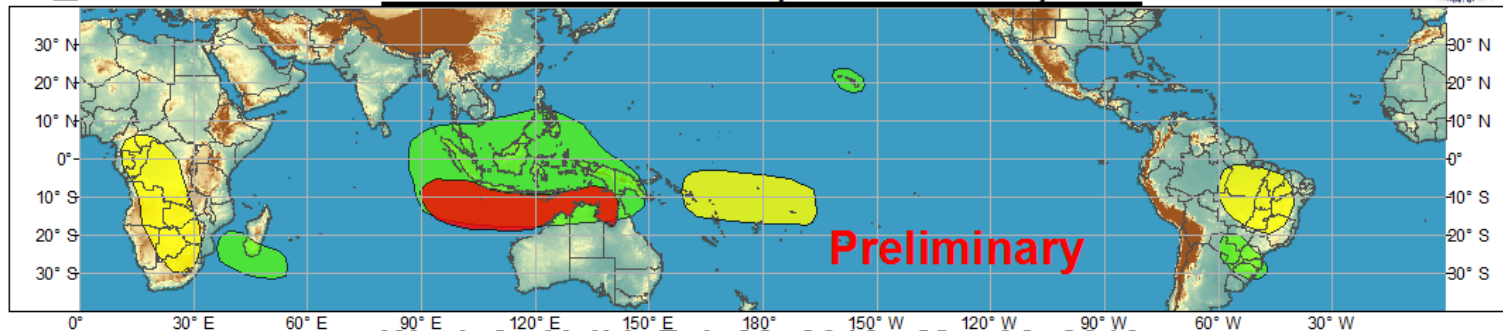




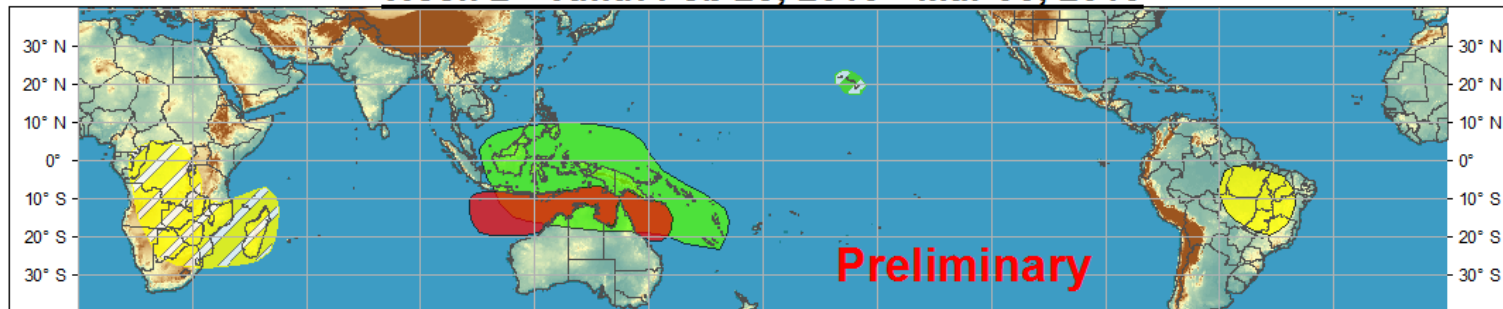
Global Tropical Hazards/Benefits Outlook - Climate Prediction Center



Week 1 - Valid: Feb 21, 2013 - Feb 27, 2013



Week 2 - Valid: Feb 28, 2013 - Mar 06, 2013



Produced: 02/19/2013

Forecaster: Gottschalck

Confidence
High Moderate

Tropical Cyclone Formation



Development of a tropical cyclone that eventually reaches tropical storm/cyclone strength.

Above-average rainfall



Weekly total rainfall in the upper third of the historical range.

Below-average rainfall



Weekly total rainfall in the lower third of the historical range.

Above-normal temperatures



7-day mean temperatures in the upper third of the historical range.

Below-normal temperatures



7-day mean temperatures in the lower third of the historical range.

Product is updated once per week. The product targets broad scale conditions integrated over a 7-day period for US interests only. Consult your local responsible forecast agency.

