

Global Tropics Hazards And Benefits Outlook

February 26, 2013

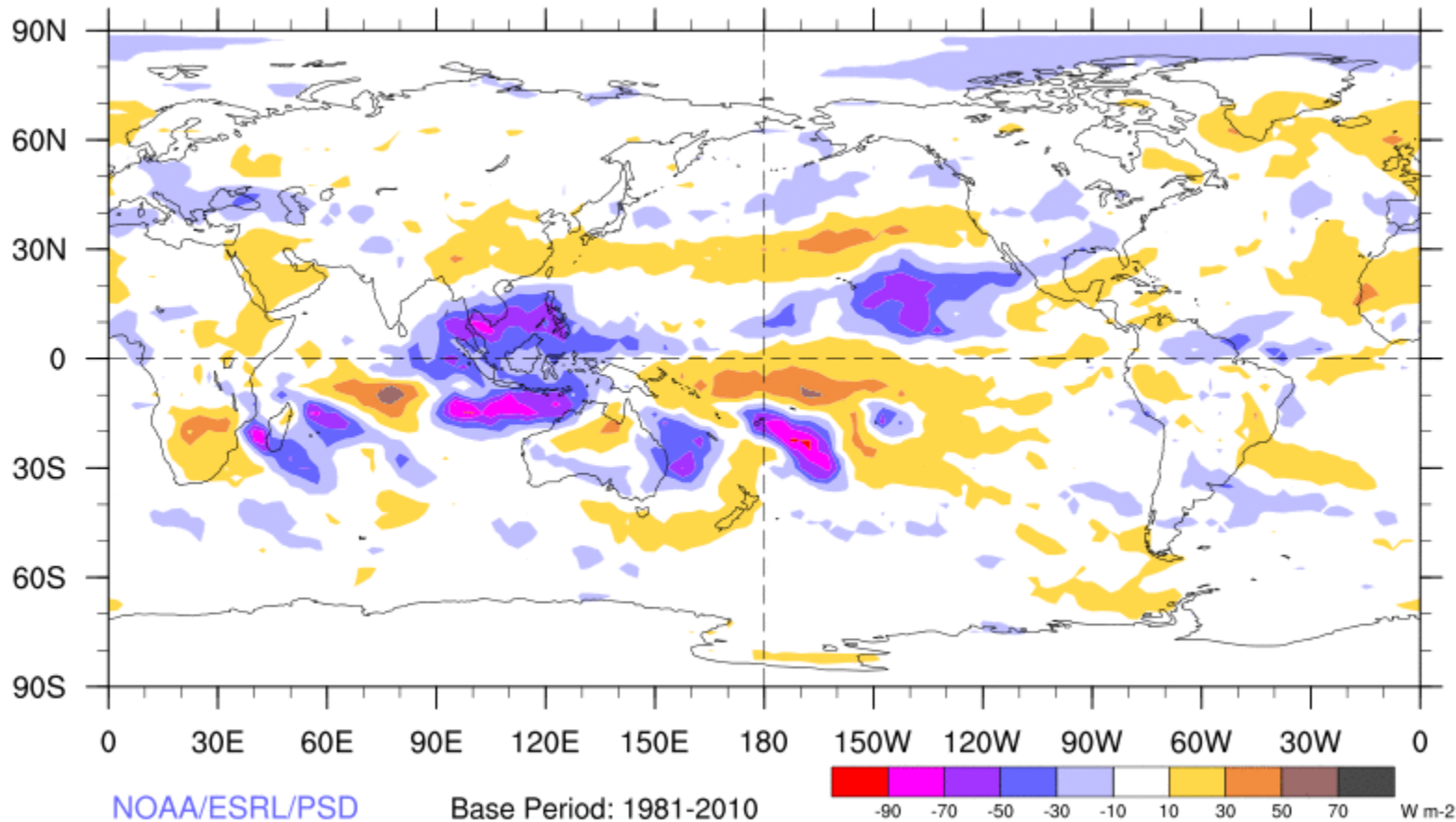
Jon Gottschalck

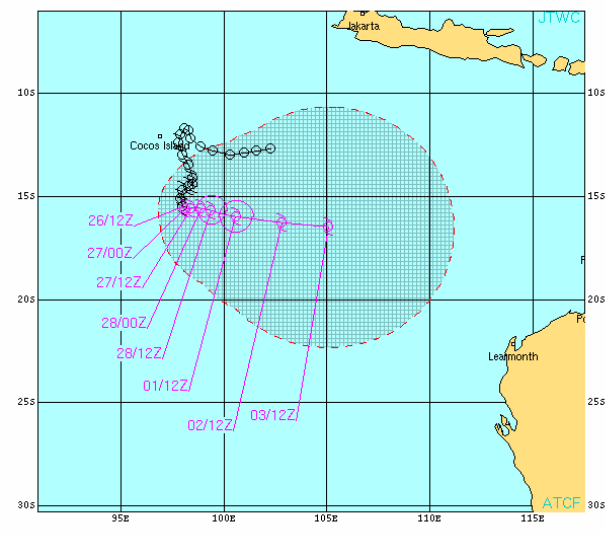
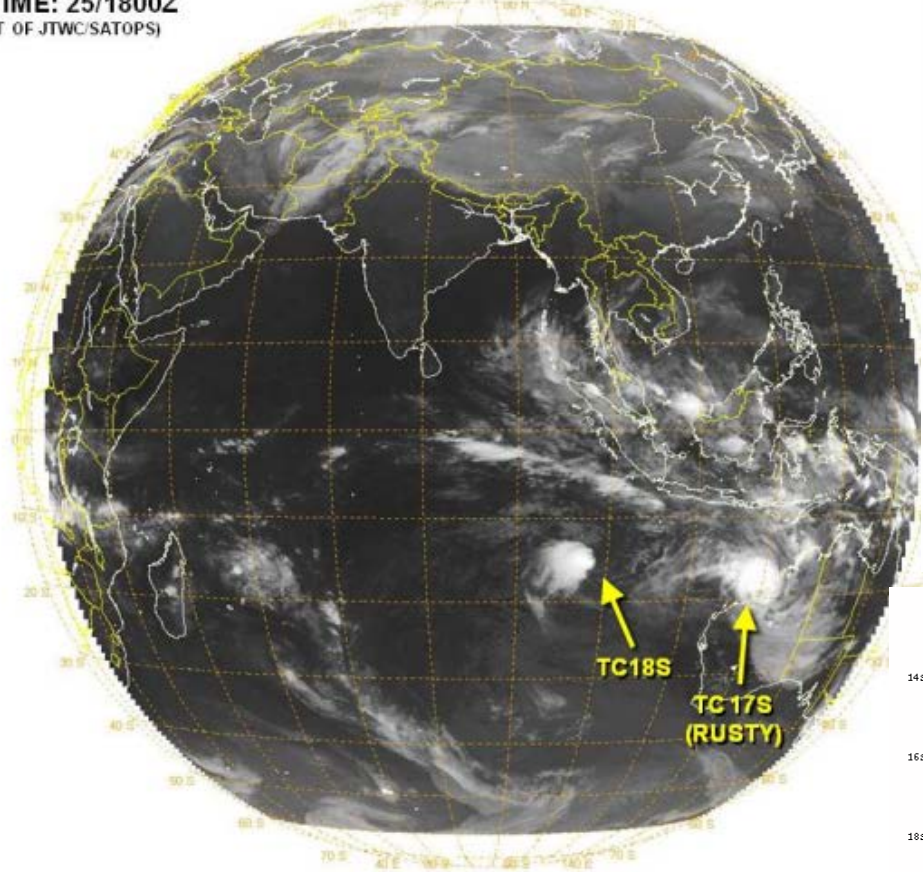
Outline

1. Review of Recent Conditions
2. Synopsis of Climate Modes
3. GTH Outlook and Forecast Discussion

7-Day Average OLR Anomaly

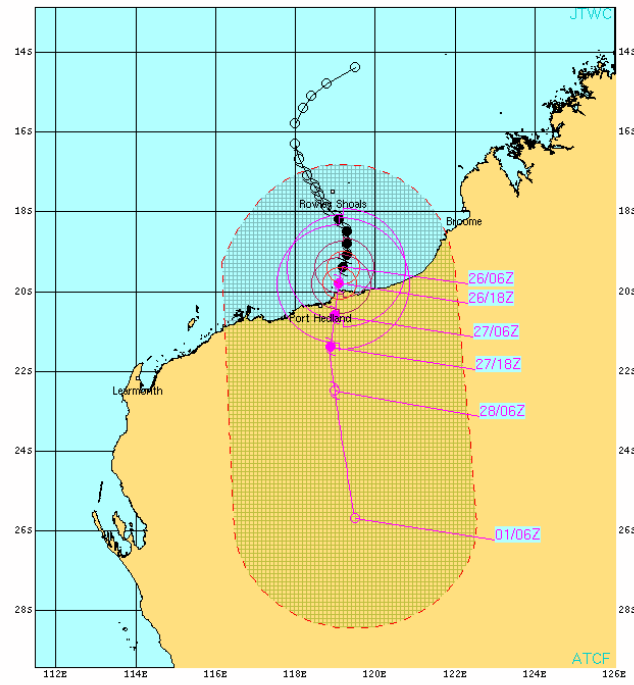
2013/02/18 - 2013/02/24





TROPICAL CYCLONE 18S (EIGHTEEN) WARNING #5
 WTX333 POTW 261500
 261200Z POSIT. NEAR 15 55 98 0E
 MOVING 165 DEGREES TRUE AT 04 KNOTS
 MAXIMUM SIGNIFICANT WAVE HEIGHT: 17 FEET
 26/12Z, WINDS 035 KTS, GUSTS TO 045 KTS
 27/00Z, WINDS 035 KTS, GUSTS TO 045 KTS
 27/00Z, WINDS 035 KTS, GUSTS TO 045 KTS
 28/00Z, WINDS 035 KTS, GUSTS TO 045 KTS
 28/12Z, WINDS 040 KTS, GUSTS TO 050 KTS
 01/12Z, WINDS 045 KTS, GUSTS TO 055 KTS
 02/12Z, WINDS 050 KTS, GUSTS TO 065 KTS
 03/12Z, WINDS 055 KTS, GUSTS TO 070 KTS

○ LESS THAN 34 KNOTS
 ◑ 34-63 KNOTS
 ◐ MORE THAN 63 KNOTS
 ◑ PAST 6 HOURLY CYCLONE POSITS IN BLACK
 ◐ FORECAST CYCLONE POSITS IN COLOR



TROPICAL CYCLONE 17S (RUSTY) WARNING #6
 WTX332 POTW 260500
 260600Z POSIT. NEAR 19 45 119 2E
 MOVING 195 DEGREES TRUE AT 03 KNOTS
 MAXIMUM SIGNIFICANT WAVE HEIGHT: 15 FEET
 26/06Z, WINDS 065 KTS, GUSTS TO 080 KTS
 26/18Z, WINDS 080 KTS, GUSTS TO 100 KTS
 27/06Z, WINDS 075 KTS, GUSTS TO 090 KTS
 27/18Z, WINDS 070 KTS, GUSTS TO 085 KTS
 28/06Z, WINDS 060 KTS, GUSTS TO 075 KTS
 01/06Z, WINDS 030 KTS, GUSTS TO 040 KTS

CPA TO:	NM	DTG
PORT_MEDLAND	24	27/02Z
LEARNMOUTH	269	28/00Z

BEARING AND DISTANCE	DIR	DIST (NM)	TRW (HRS)
BRONNE	228	243	24
LEARNMOUTH	070	292	24
PORT_MEDLAND	129	29	24
BRONNE	213	330	48
LEARNMOUTH	093	272	48
PORT_MEDLAND	170	134	48
LEARNMOUTH	126	353	72
PORT_MEDLAND	171	328	72

○ LESS THAN 34 KNOTS
 ◑ 34-63 KNOTS
 ◐ MORE THAN 63 KNOTS
 ◑ PAST 6 HOURLY CYCLONE POSITS IN BLACK
 ◐ FORECAST CYCLONE POSITS IN COLOR

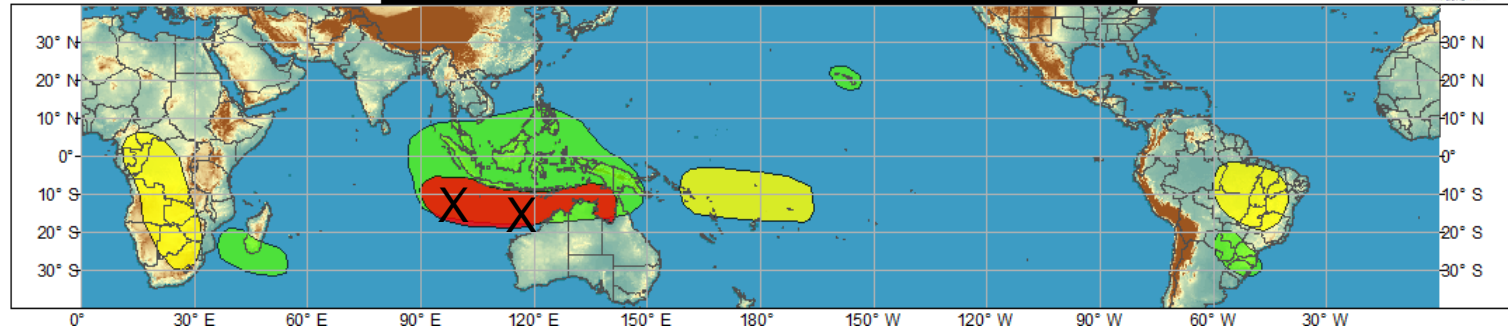




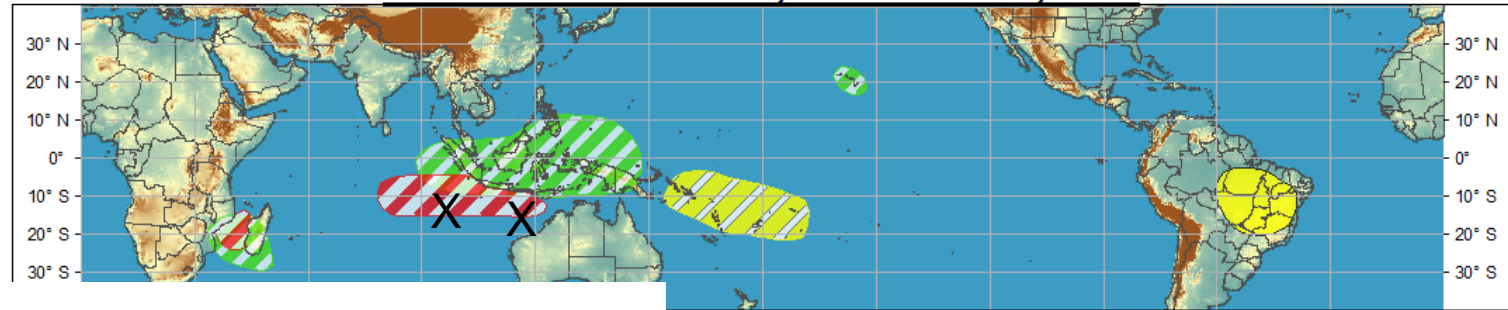
Global Tropical Hazards/Benefits Outlook - Climate Prediction Center



Week 1 - Valid: Feb 20, 2013 - Feb 26, 2013

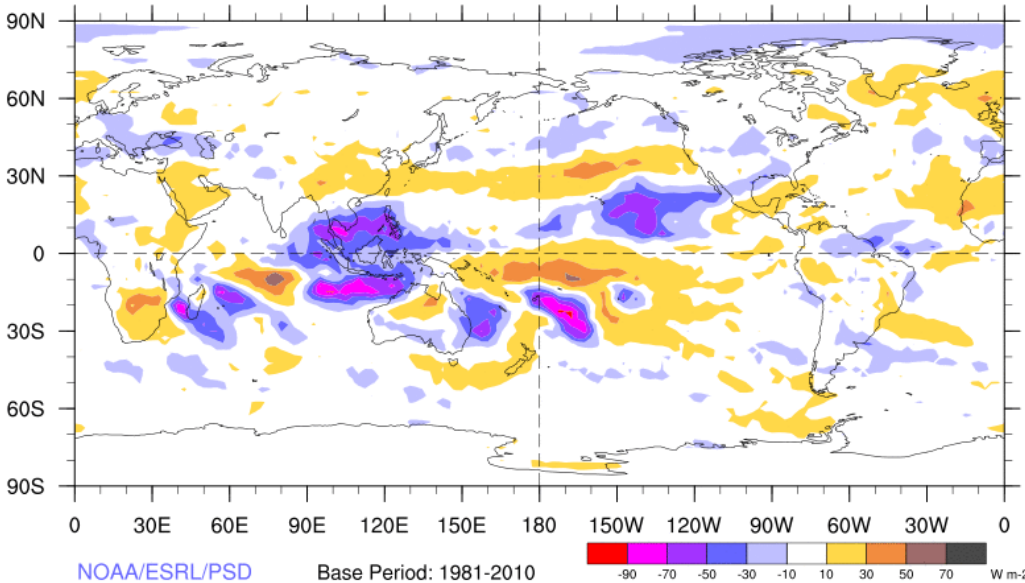


Week 2 - Valid: Feb 20, 2013 - Feb 26, 2013



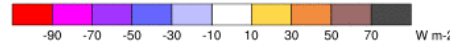
7-Day Average OLR Anomaly

2013/02/18 - 2013/02/24



NOAA/ESRL/PSD

Base Period: 1981-2010



Outlook Review

Synopsis of Climate Modes

ENSO:

- ENSO-neutral conditions are favored to continue through Northern Hemisphere spring 2013

MJO and other subseasonal tropical variability:

- The MJO remained active with the enhanced phase crossing the Maritime continent during the past week.

- There is some spread in the dynamical model MJO index forecasts with some models persisting the signal over the Maritime continent while others show some eastward propagation into the western Pacific.

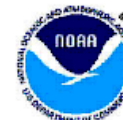
- Statistical forecasts are more in line with the latter, however, westward moving subseasonal tropical variability supports a more slow eastward evolution of large-scale convection.

Extratropics:

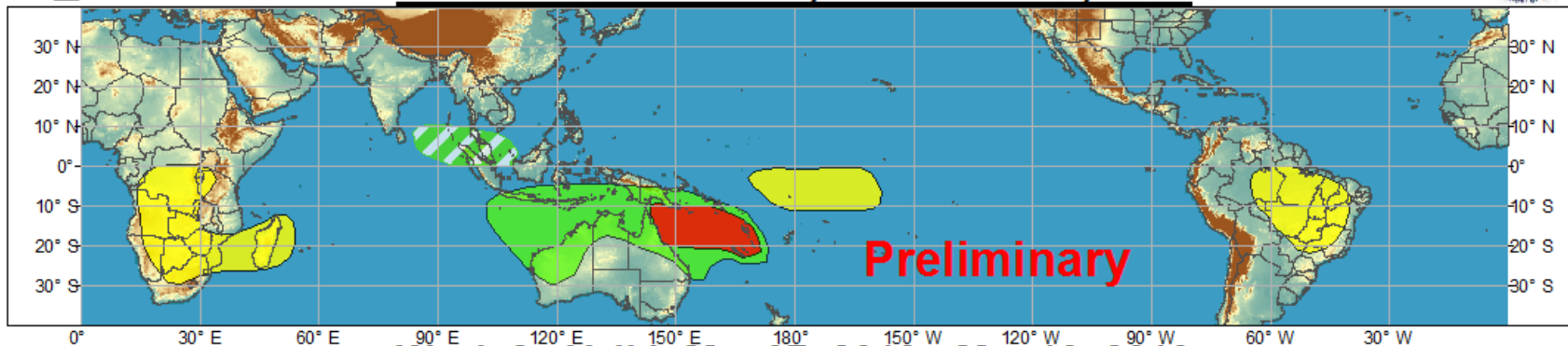
- High latitude blocking (-AO / -NAO) playing a large role across the central and eastern U.S. despite MJO forcing
- AO / NAO indices are forecast to be negative during the next two weeks
- Circulation across the Pacific has been more consistent with the MJO



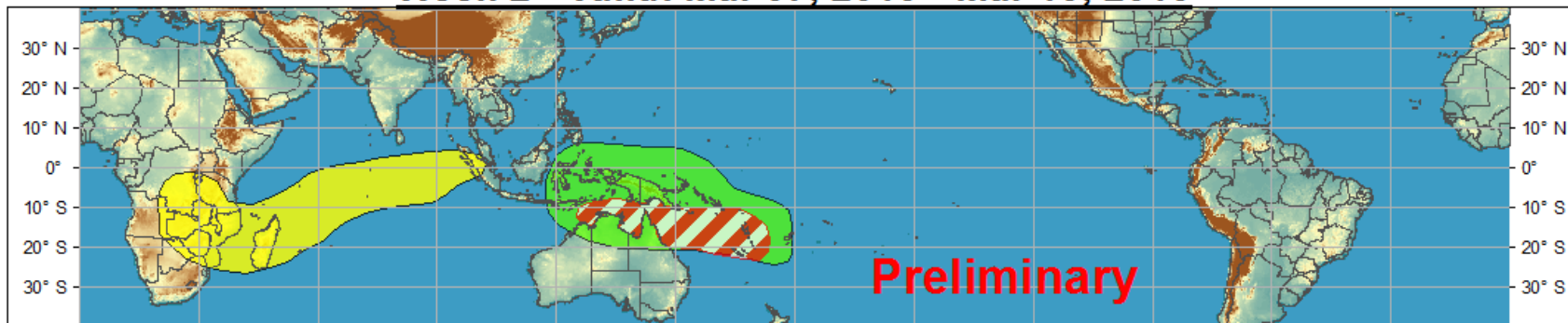
Global Tropical Hazards/Benefits Outlook - Climate Prediction Center



Week 1 - Valid: Feb 28, 2013 - Mar 06, 2013



Week 2 - Valid: Mar 07, 2013 - Mar 13, 2013



Confidence
High Moderate

Tropical Cyclone Formation



Development of a tropical cyclone that eventually reaches tropical storm/cyclone strength.

Above-average rainfall



Weekly total rainfall in the upper third of the historical range.

Below-average rainfall



Weekly total rainfall in the lower third of the historical range.

Above-normal temperatures



7-day mean temperatures in the upper third of the historical range.

Below-normal temperatures



7-day mean temperatures in the lower third of the historical range.

Produced: 02/26/2013

Forecaster: Gottschalck

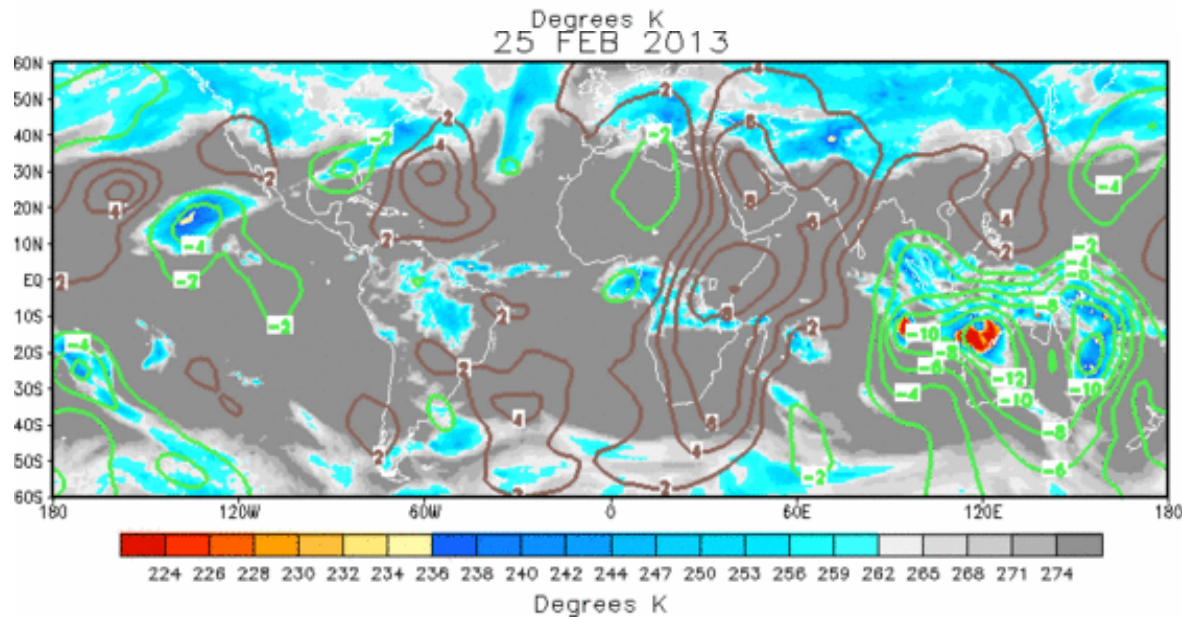
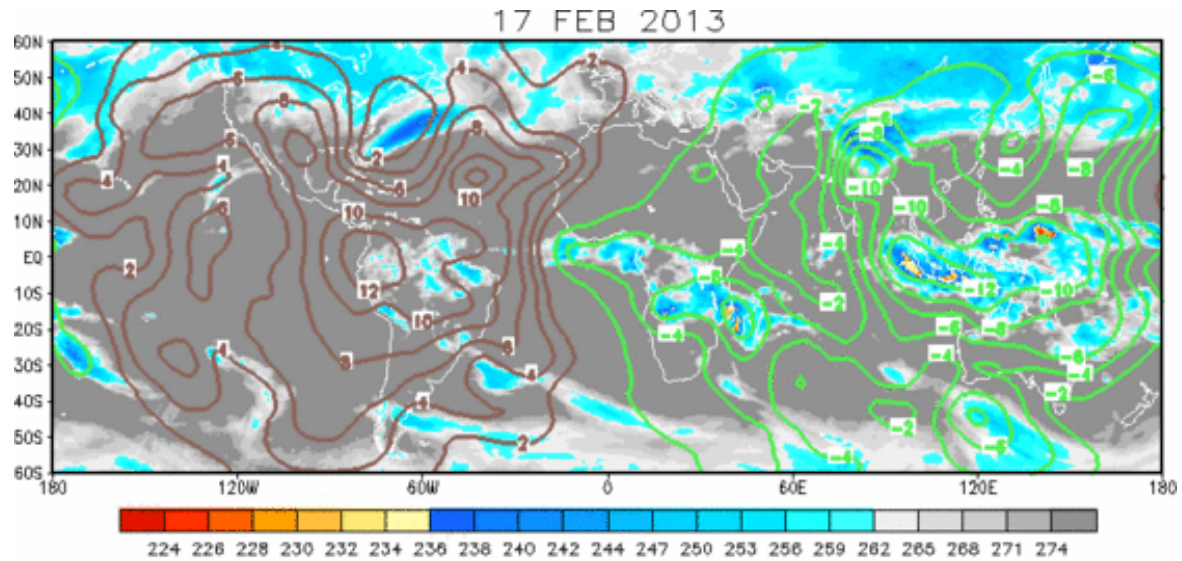
Product is updated once per week. The product targets broad scale conditions integrated over a 7-day period for US interests only. Consult your local responsible forecast agency.



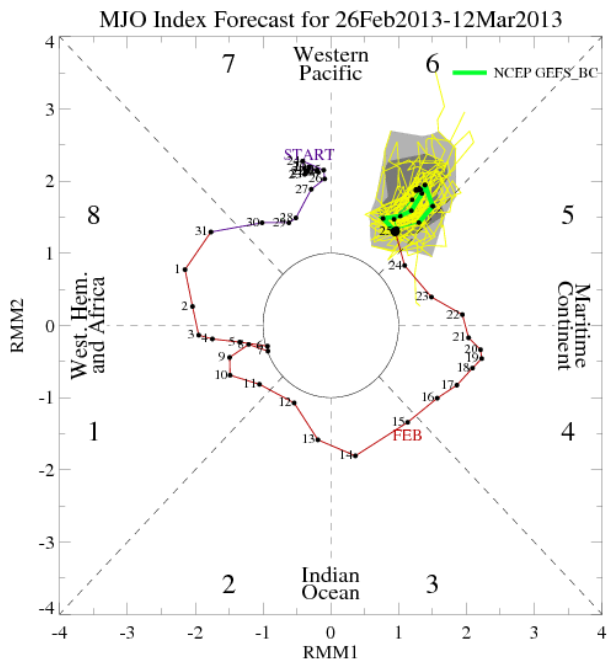
IR Satellite & 200-hpa Velocity Potential Anomalies

Green: Enhanced Divergence

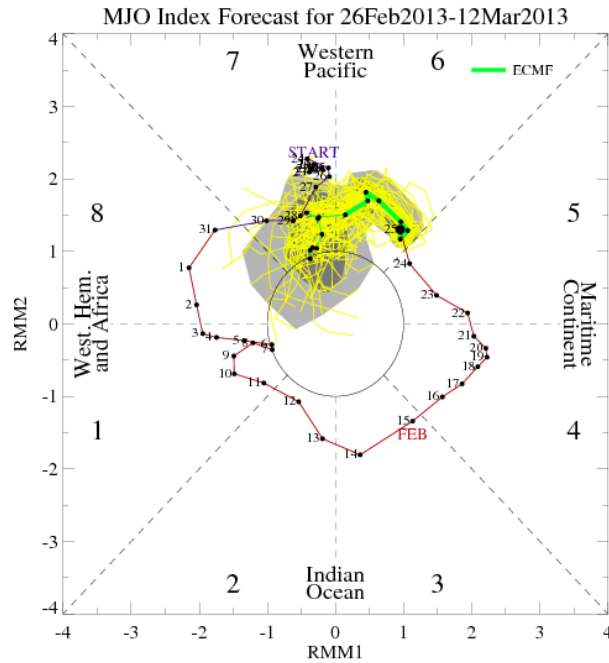
Brown: Enhanced Convergence



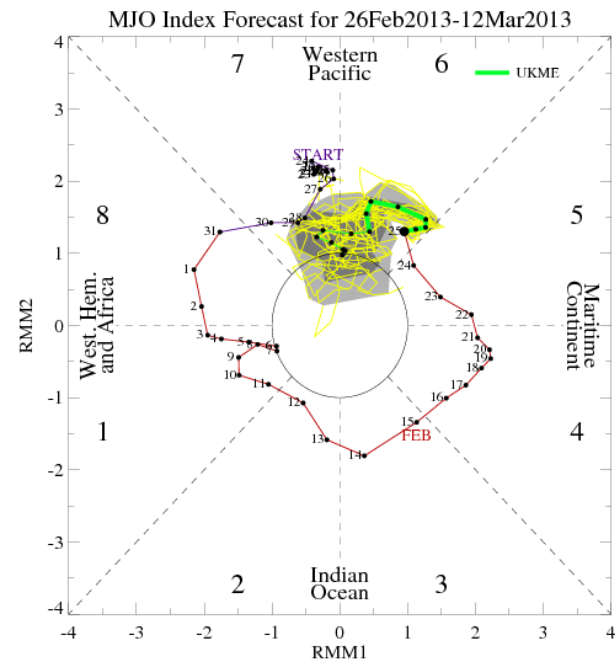
MJO Observation/Forecast



GFS

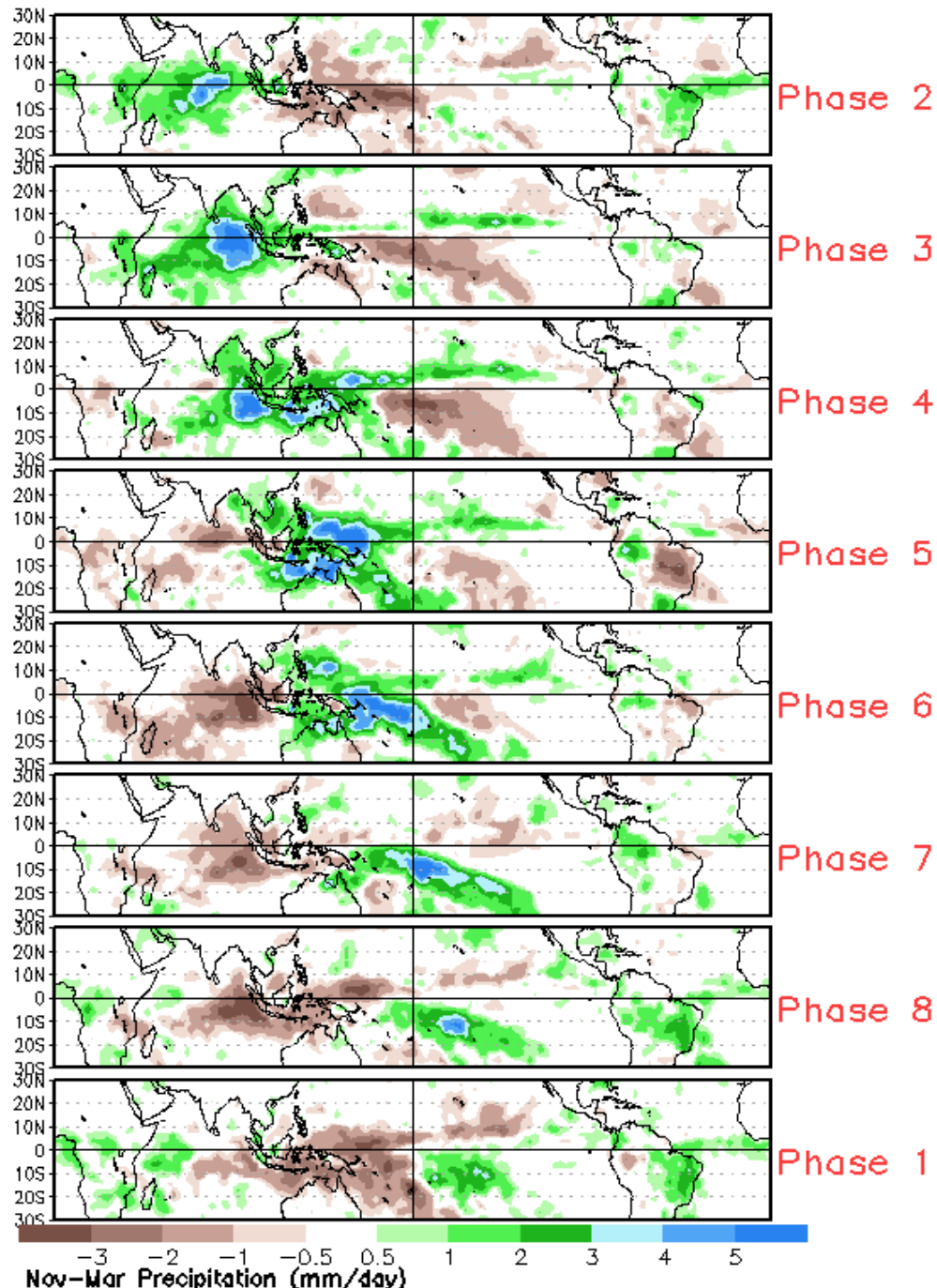


ECMWF

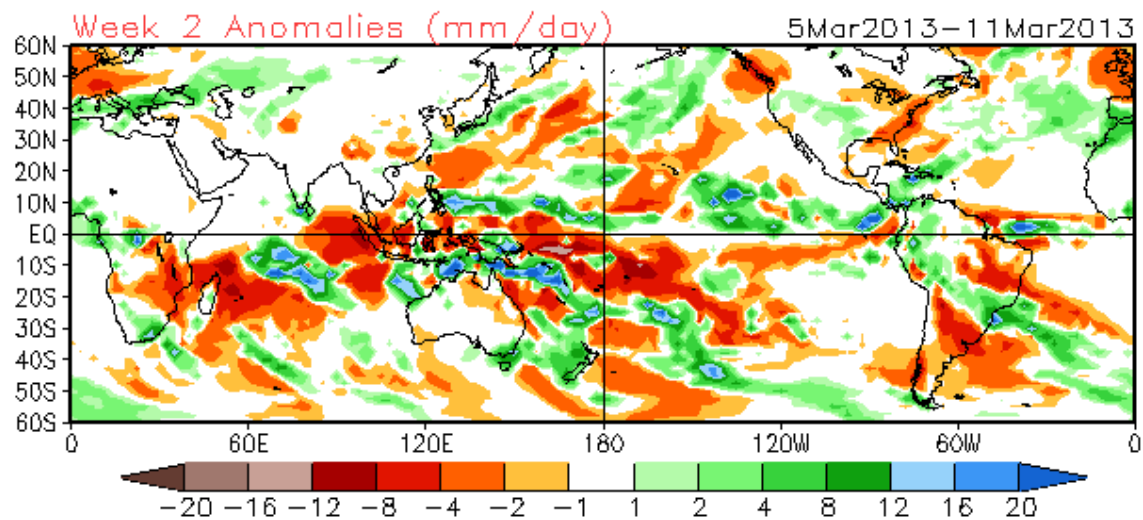
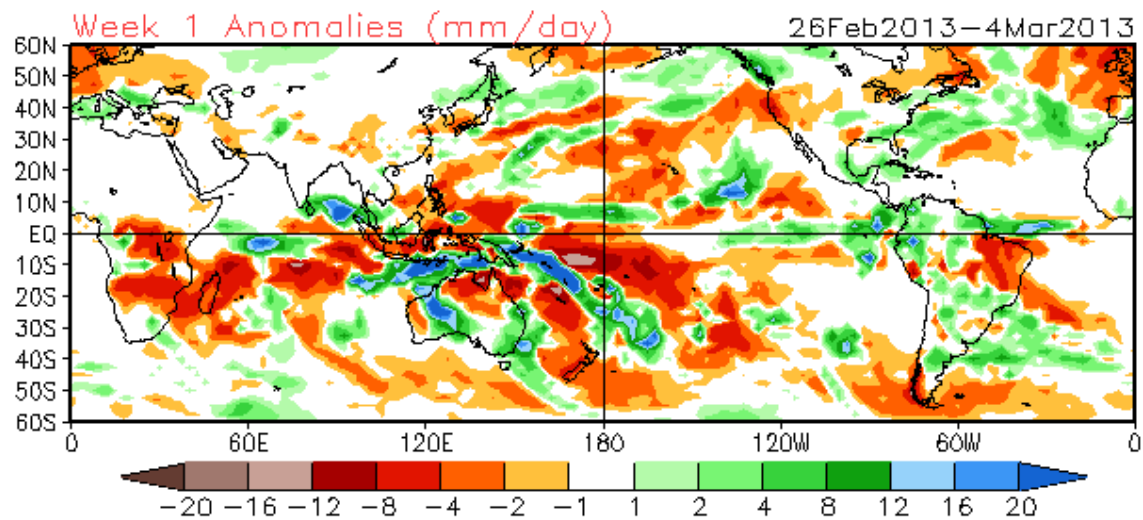


UKMet

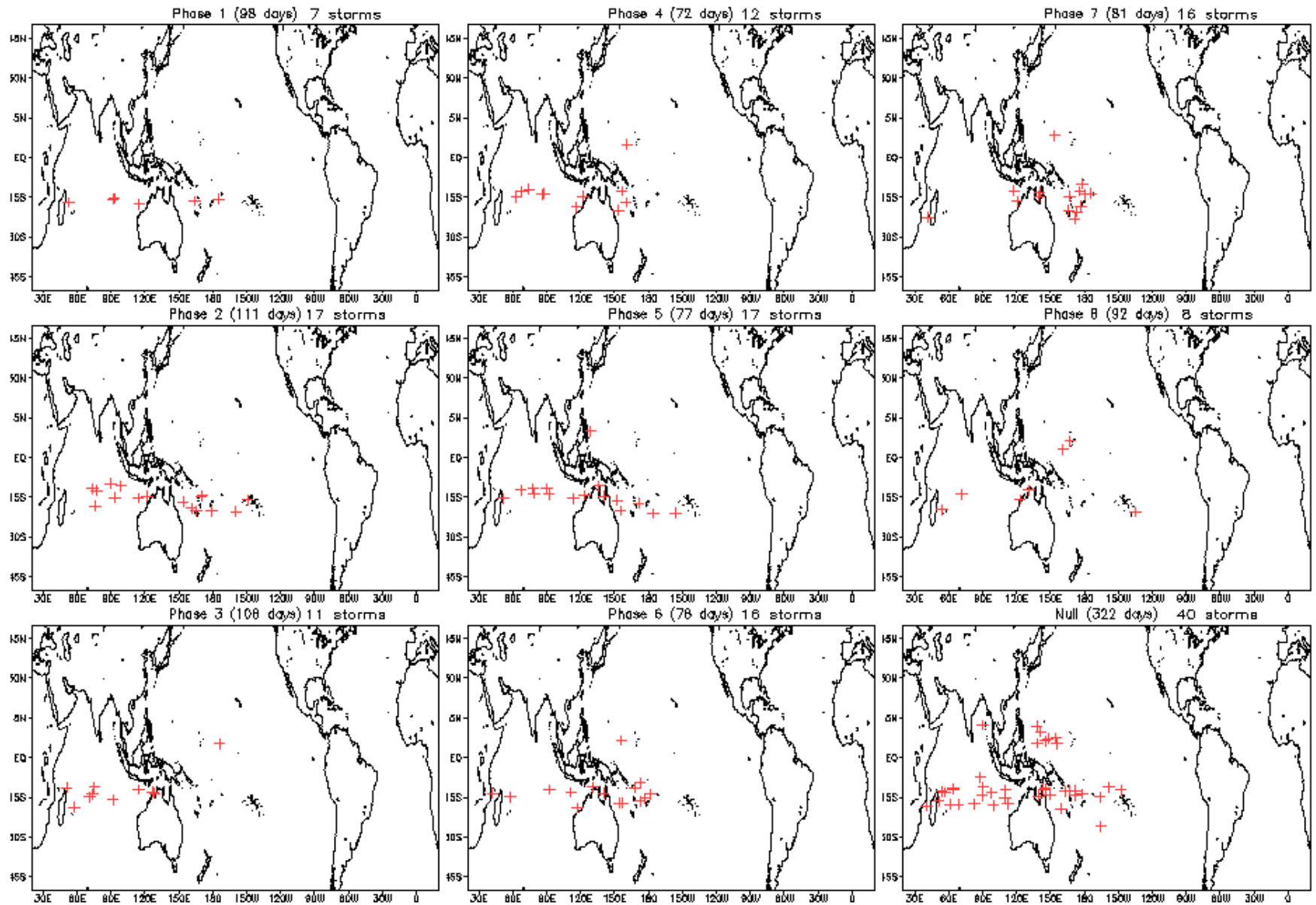
Average Conditions when the MJO is present (Nov-Mar)



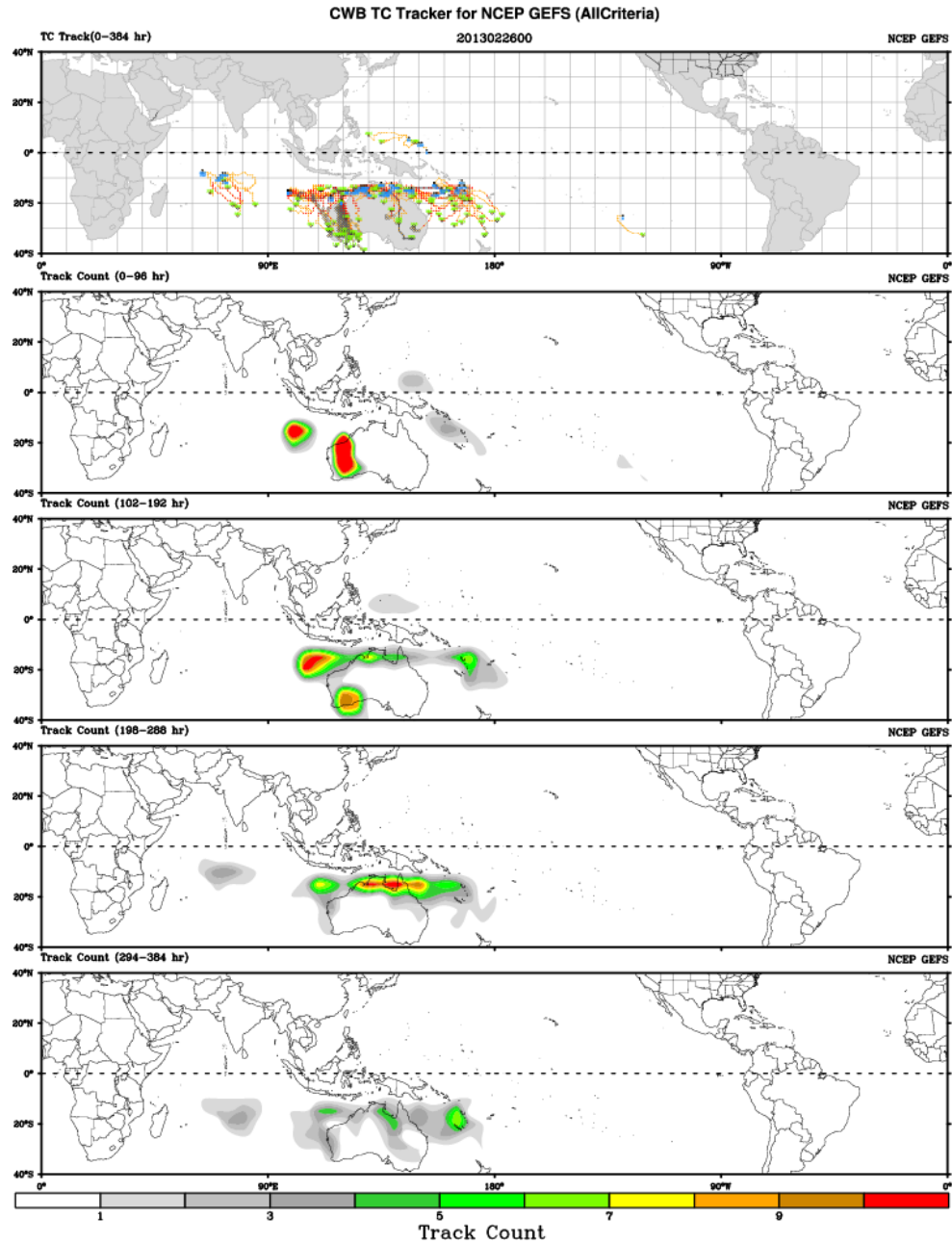
CFSv2 Weeks 1 & 2 Precipitation
16 Member Ensemble Mean Forecast from 25Feb2013



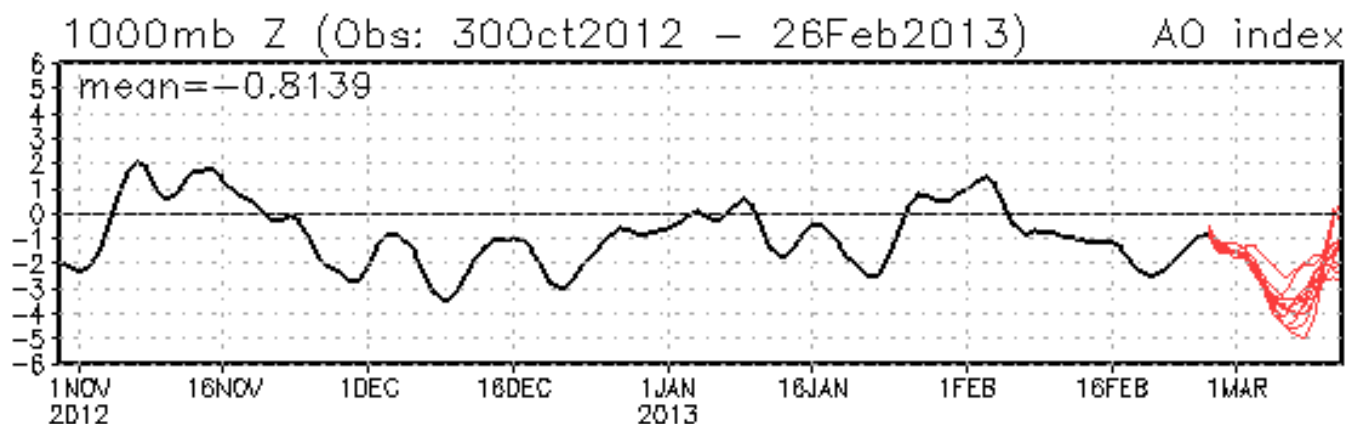
March Tropical Storm Formation by MJO phase



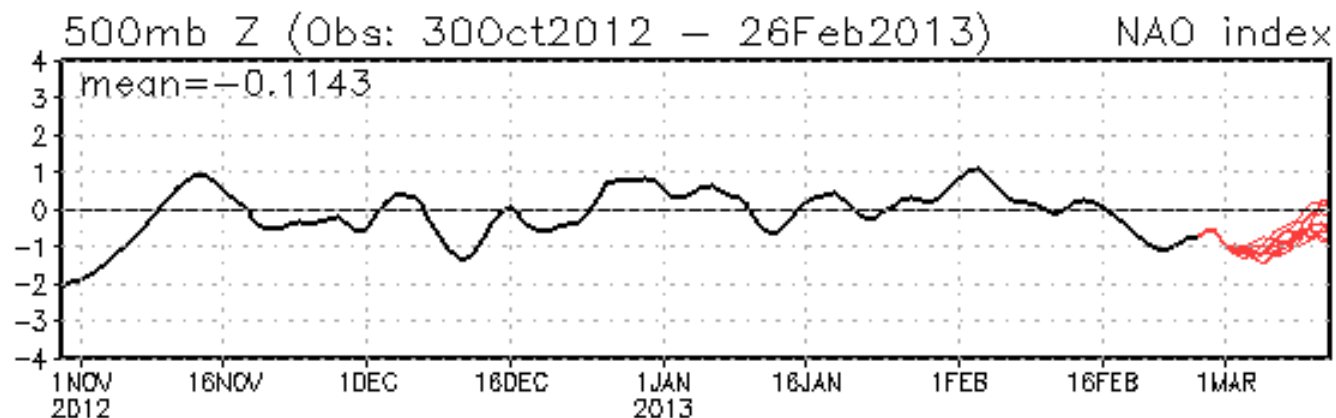
GFS Tropical Cyclone Guidance

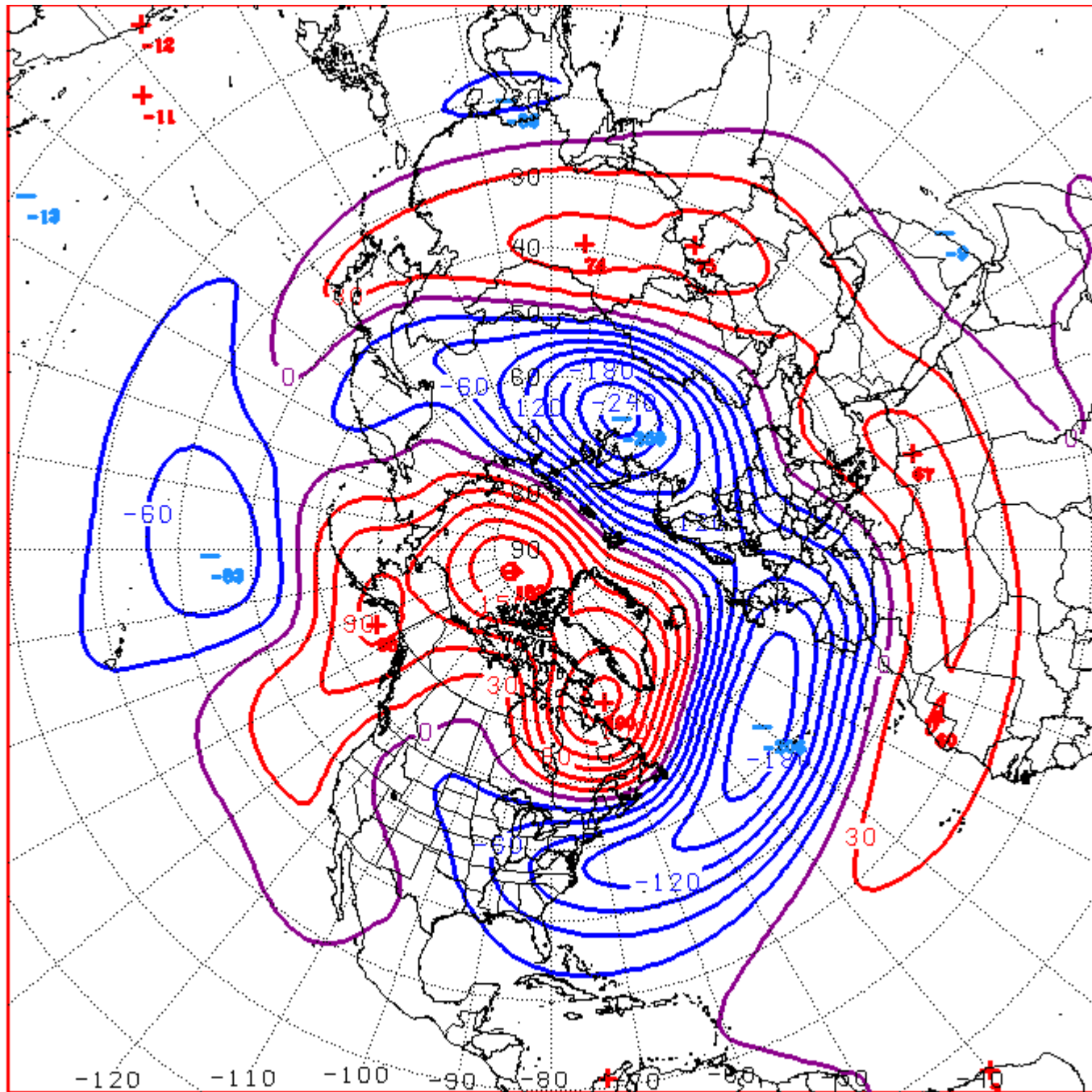


AO: Observed & ENSM forecasts



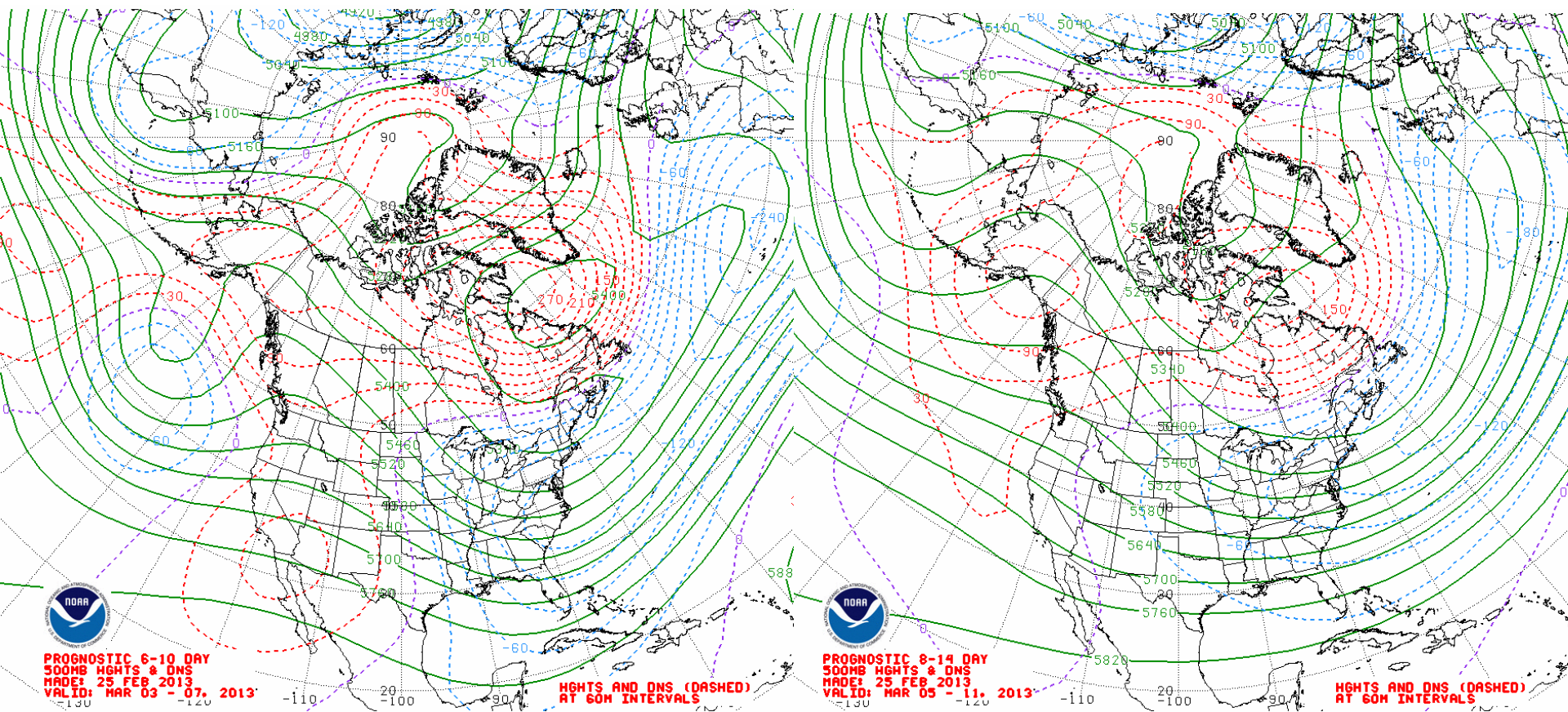
NAO: Observed & ENSM forecasts





0+11 500 MB ANOMALIES FROM 00Z ECMM
CPC MAP MADE FEB 26 2013 1044 UTC CNTD MAR 09 2013

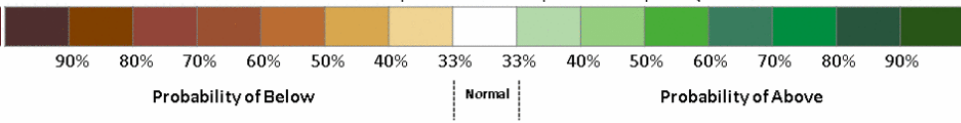
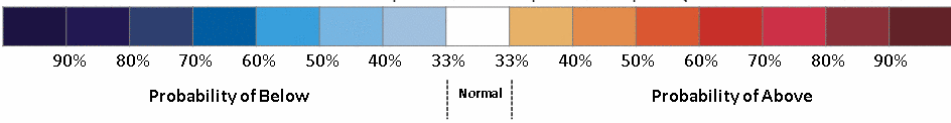
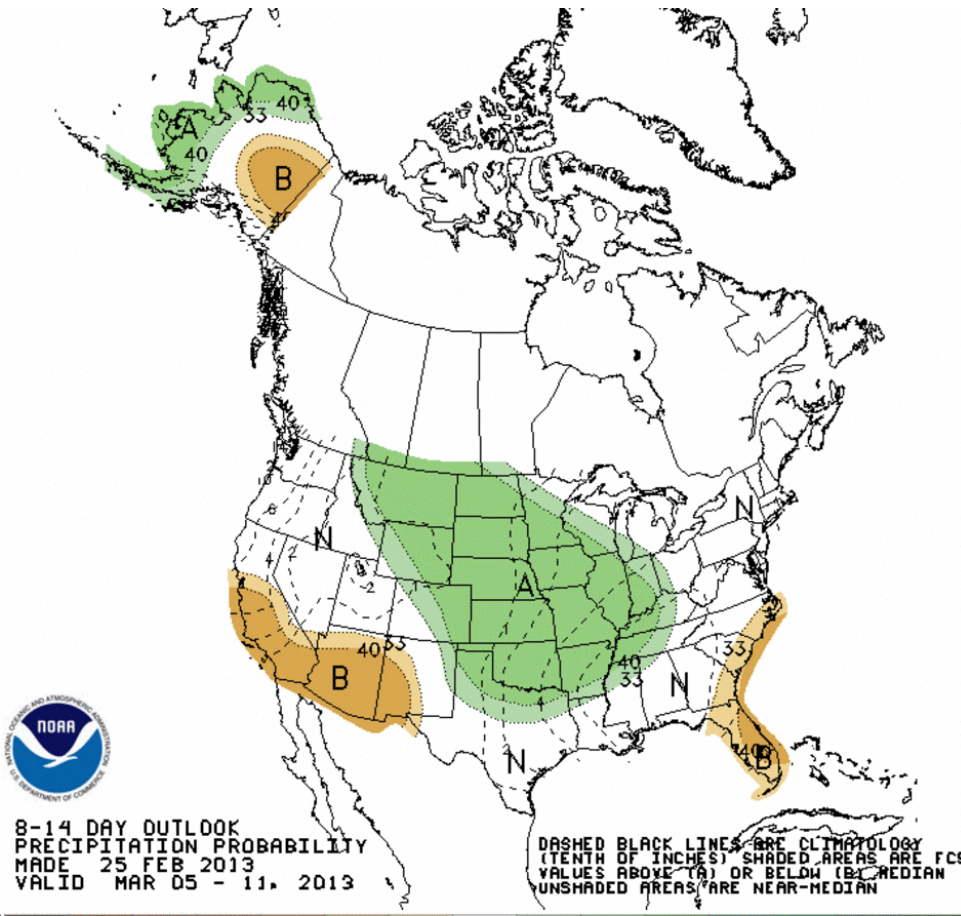
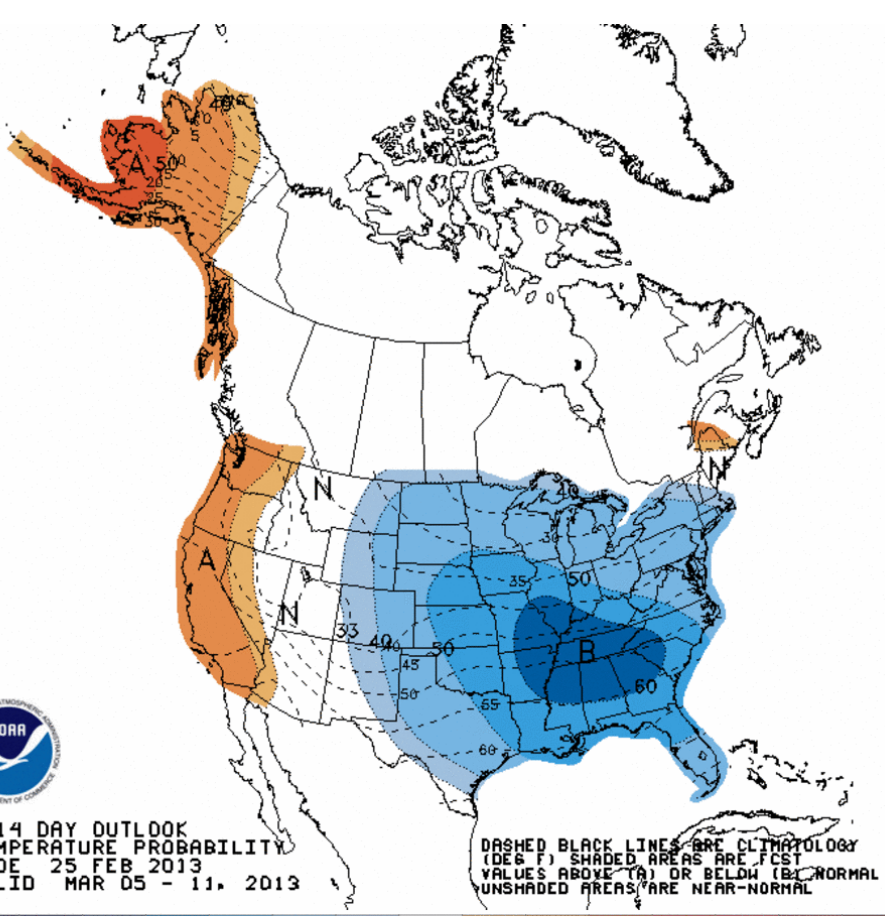
500-hPa Height Manual Blend Chart



6-10 Day

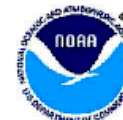
8-14 Day

Week 2 – Temperature and Precipitation

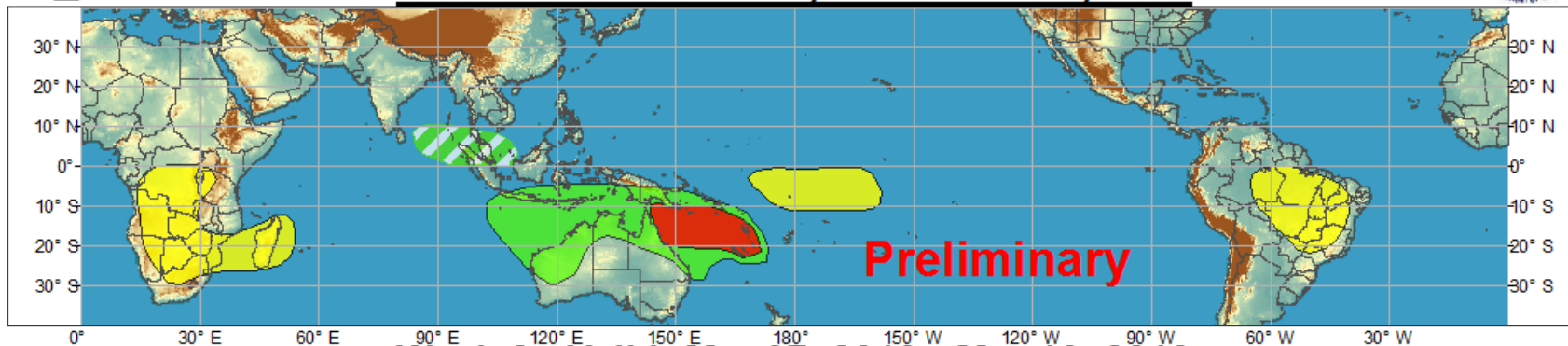




Global Tropical Hazards/Benefits Outlook - Climate Prediction Center



Week 1 - Valid: Feb 28, 2013 - Mar 06, 2013



Week 2 - Valid: Mar 07, 2013 - Mar 13, 2013



Confidence
High Moderate

Tropical Cyclone Formation



Development of a tropical cyclone that eventually reaches tropical storm/cyclone strength.

Above-average rainfall



Weekly total rainfall in the upper third of the historical range.

Below-average rainfall



Weekly total rainfall in the lower third of the historical range.

Above-normal temperatures



7-day mean temperatures in the upper third of the historical range.

Below-normal temperatures



7-day mean temperatures in the lower third of the historical range.

Produced: 02/26/2013

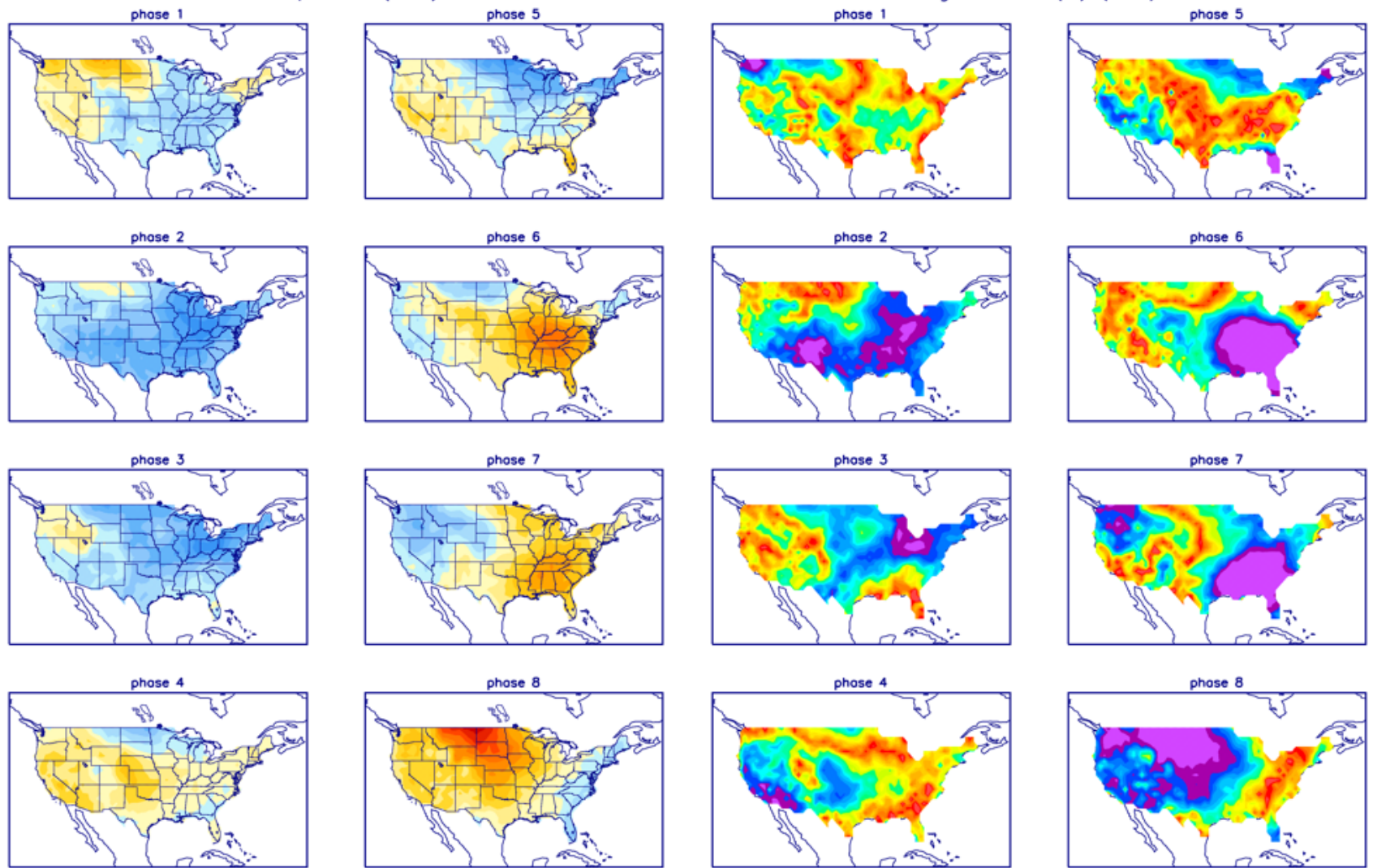
Forecaster: Gottschalck

Product is updated once per week. The product targets broad scale conditions integrated over a 7-day period for US interests only. Consult your local responsible forecast agency.

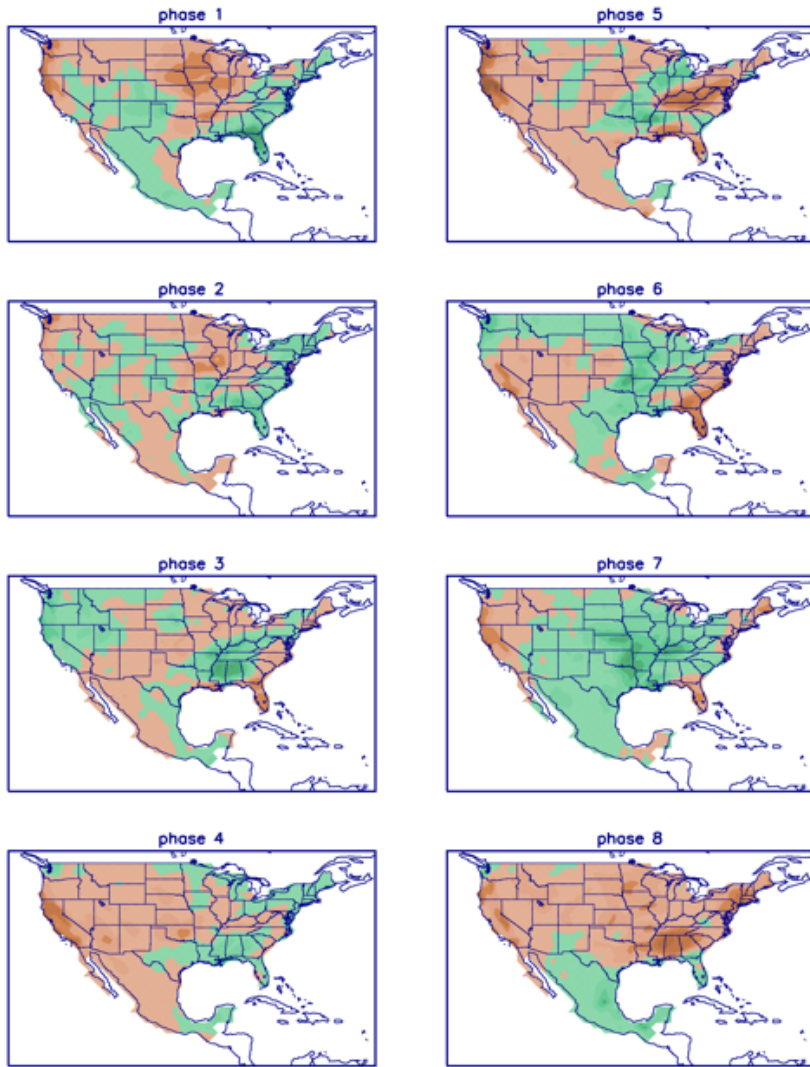


T composites (FMA)

Significance (%) (FMA)



P composites (FMA)



Significance (%) (FMA)

