

Global Tropics Hazards And Benefits Outlook

May 14, 2013

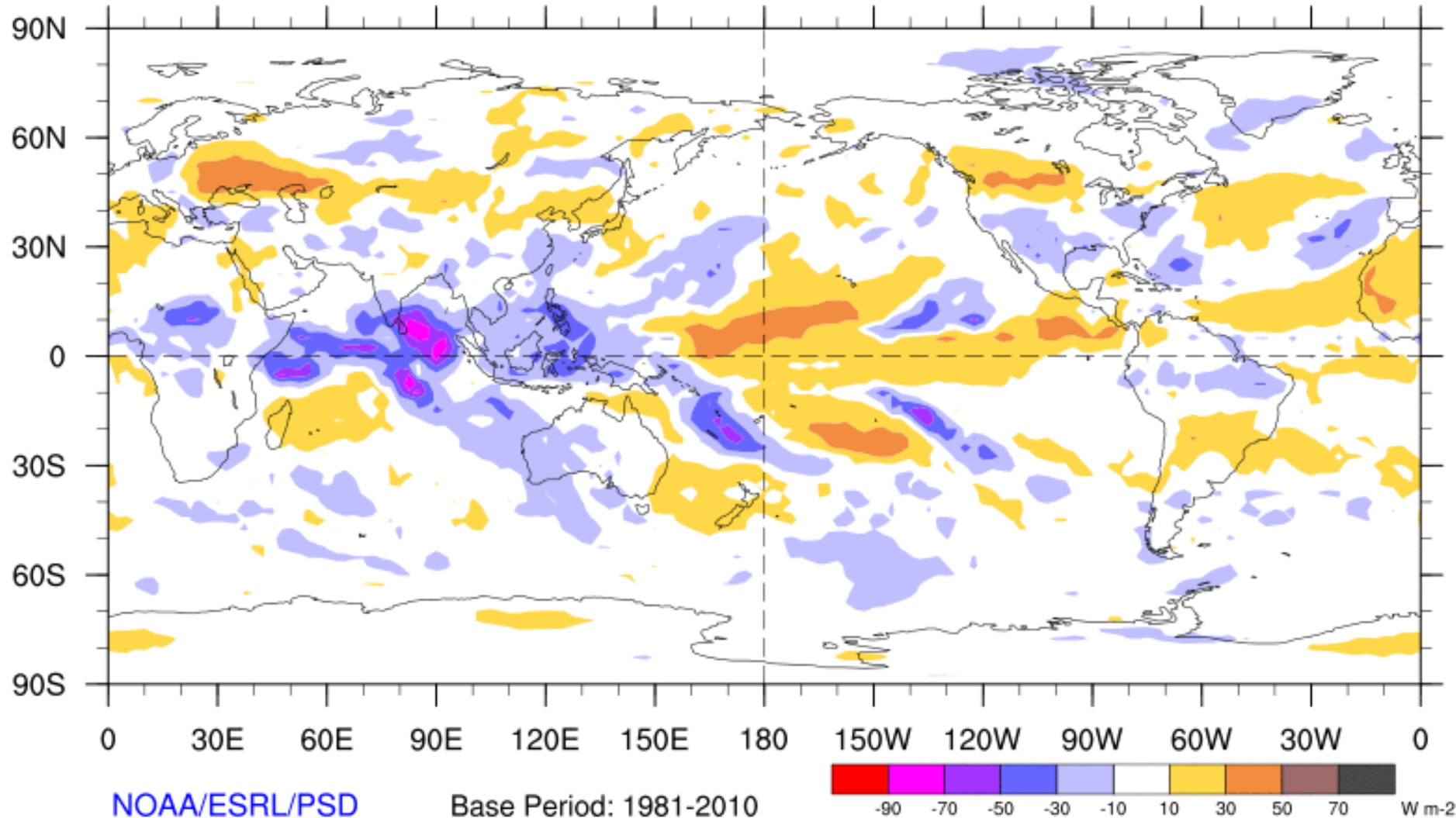
Brad Pugh

Outline

1. Review of Recent Conditions
2. Synopsis of Climate Modes
3. GTH Outlook and Forecast Discussion

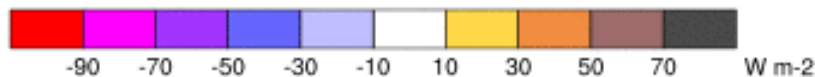
7-Day Average OLR Anomaly

2013/05/06 - 2013/05/12

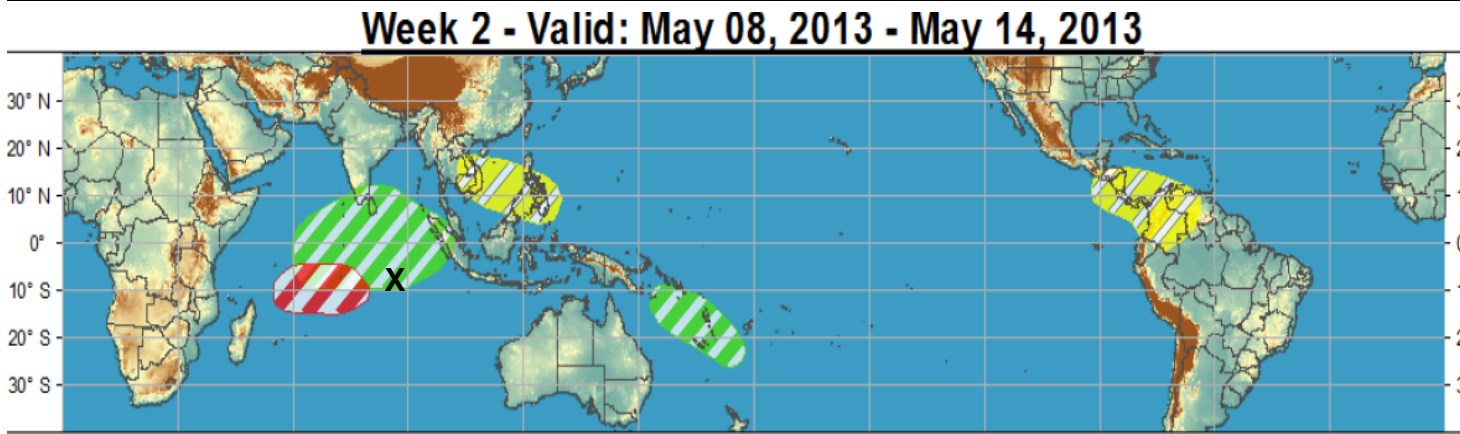
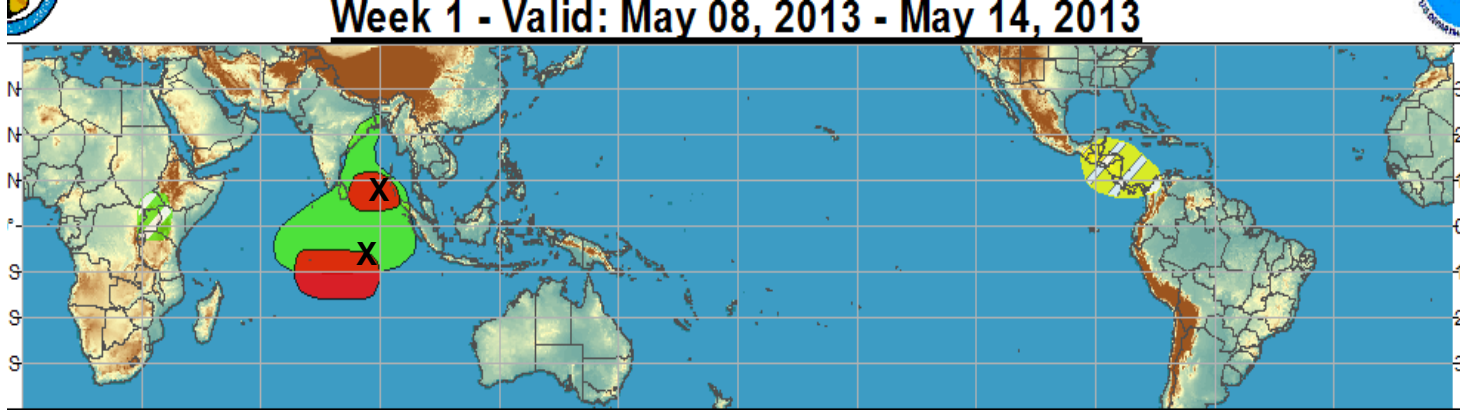


NOAA/ESRL/PSD

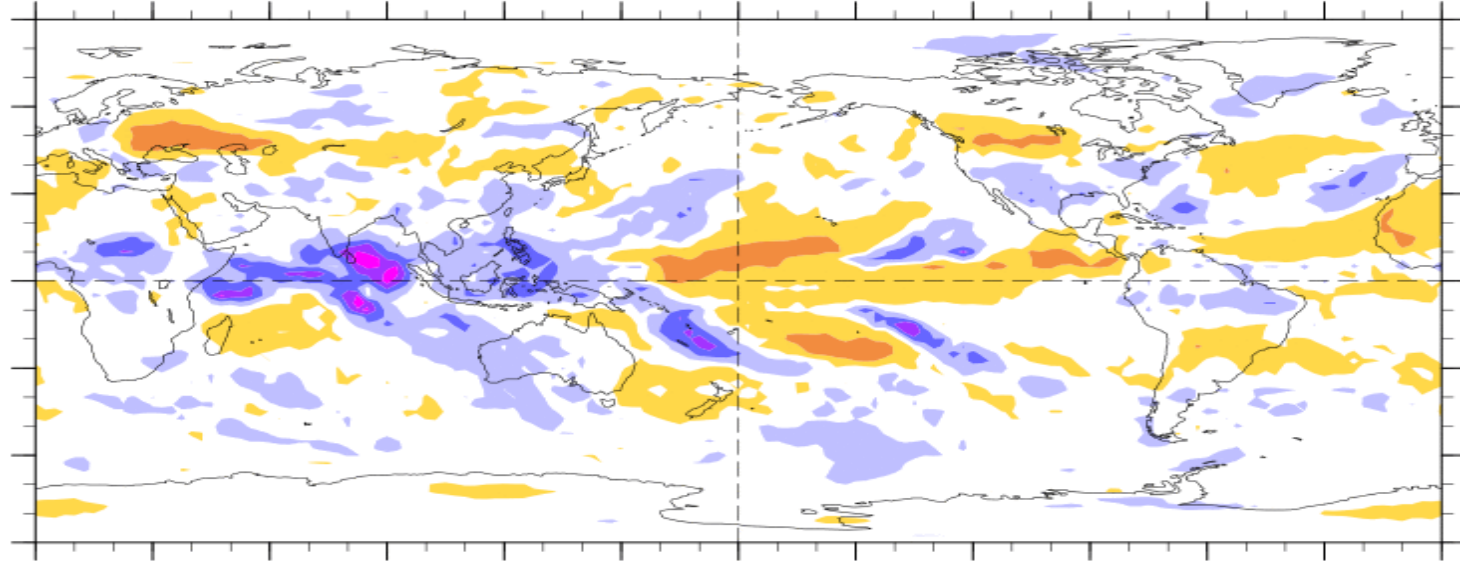
Base Period: 1981-2010



Outlook Review



7-Day Average OLR Anomaly 2013/05/06 - 2013/05/12



Cool shading
More clouds/rain

Warm shading
Less clouds/rain

Synopsis of Climate Modes

ENSO:

- ENSO-neutral conditions are favored to continue through boreal summer 2013.

MJO and other subseasonal tropical variability:

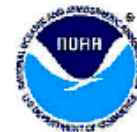
- The MJO was active during the past week with the enhanced phase over the Indian Ocean.
- Model MJO index forecasts indicate a weaker signal as the enhanced phase crosses the Maritime Continent during week-1.

Tropics:

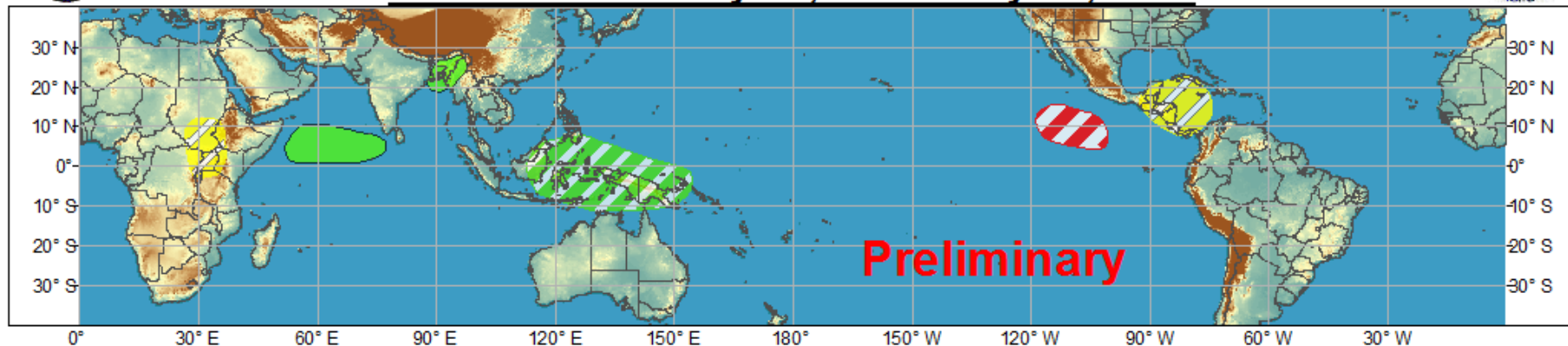
- Elevated TC development (likely weak) across the east Pacific during week-1.
- Late week-2 and week-3: potential for an early season TC in southwest Caribbean Sea.



Global Tropics Hazards and Benefits Outlook - Climate Prediction Center













Week 1 - Valid: May 15, 2013 - May 21, 2013



Week 2 - Valid: May 22, 2013 - May 28, 2013



Confidence
High Moderate

- | | | |
|-----------------------------------|---|--|
| Tropical Cyclone Formation |   | Development of a tropical cyclone that eventually reaches tropical storm/cyclone strength. |
| Above-average rainfall |   | Weekly total rainfall in the upper third of the historical range. |
| Below-average rainfall |   | Weekly total rainfall in the lower third of the historical range. |
| Above-normal temperatures |   | 7-day mean temperatures in the upper third of the historical range. |
| Below-normal temperatures |   | 7-day mean temperatures in the lower third of the historical range. |

Produced: 05/13/2013

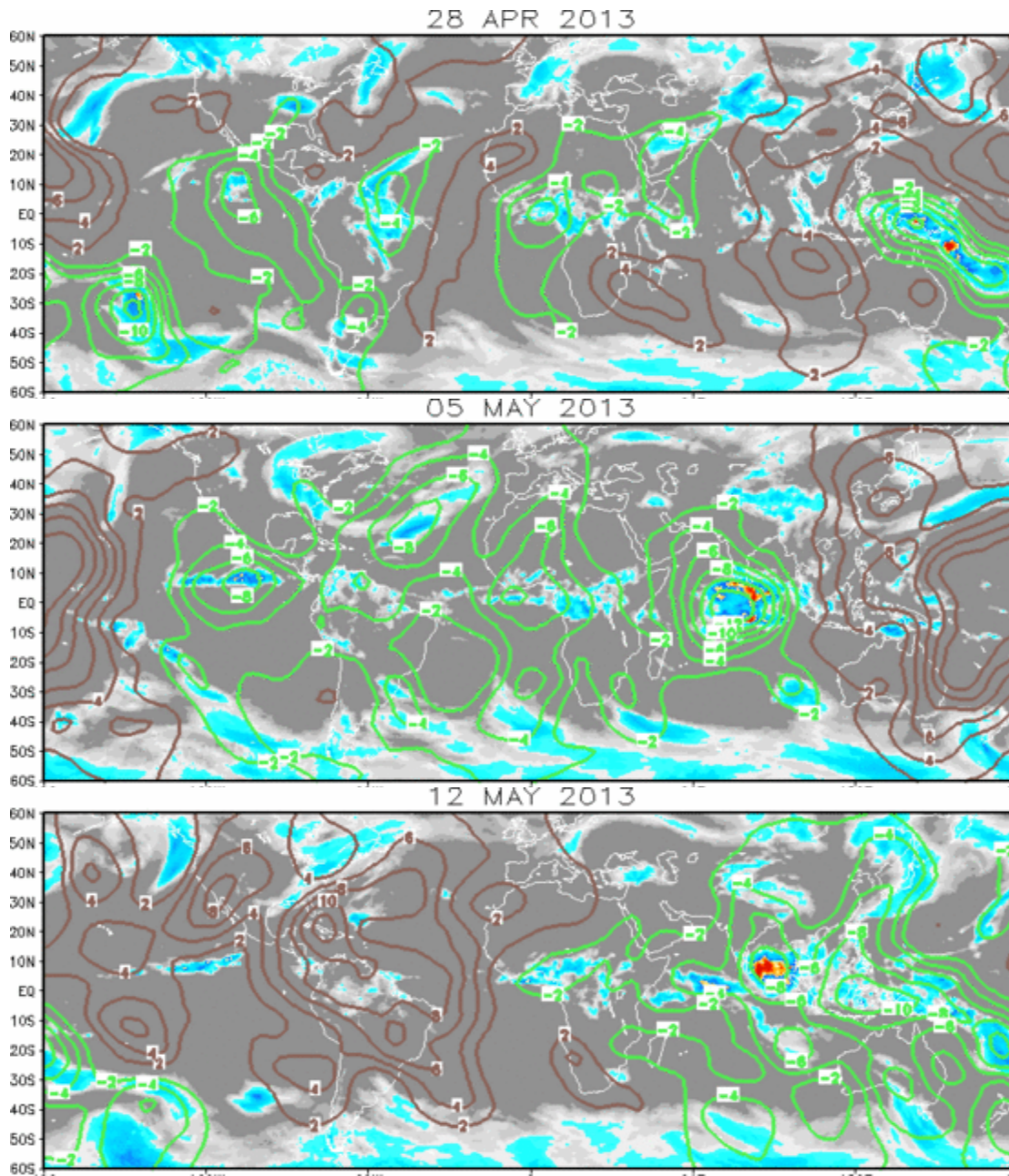
Forecaster: Pugh

Product is updated once per week. The product targets broad scale conditions integrated over a 7-day period for US interests only. Consult your local responsible forecast agency.



IR Satellite & 200-hpa Velocity Potential Anomalies

Green: Enhanced Divergence Brown: Enhanced Convergence



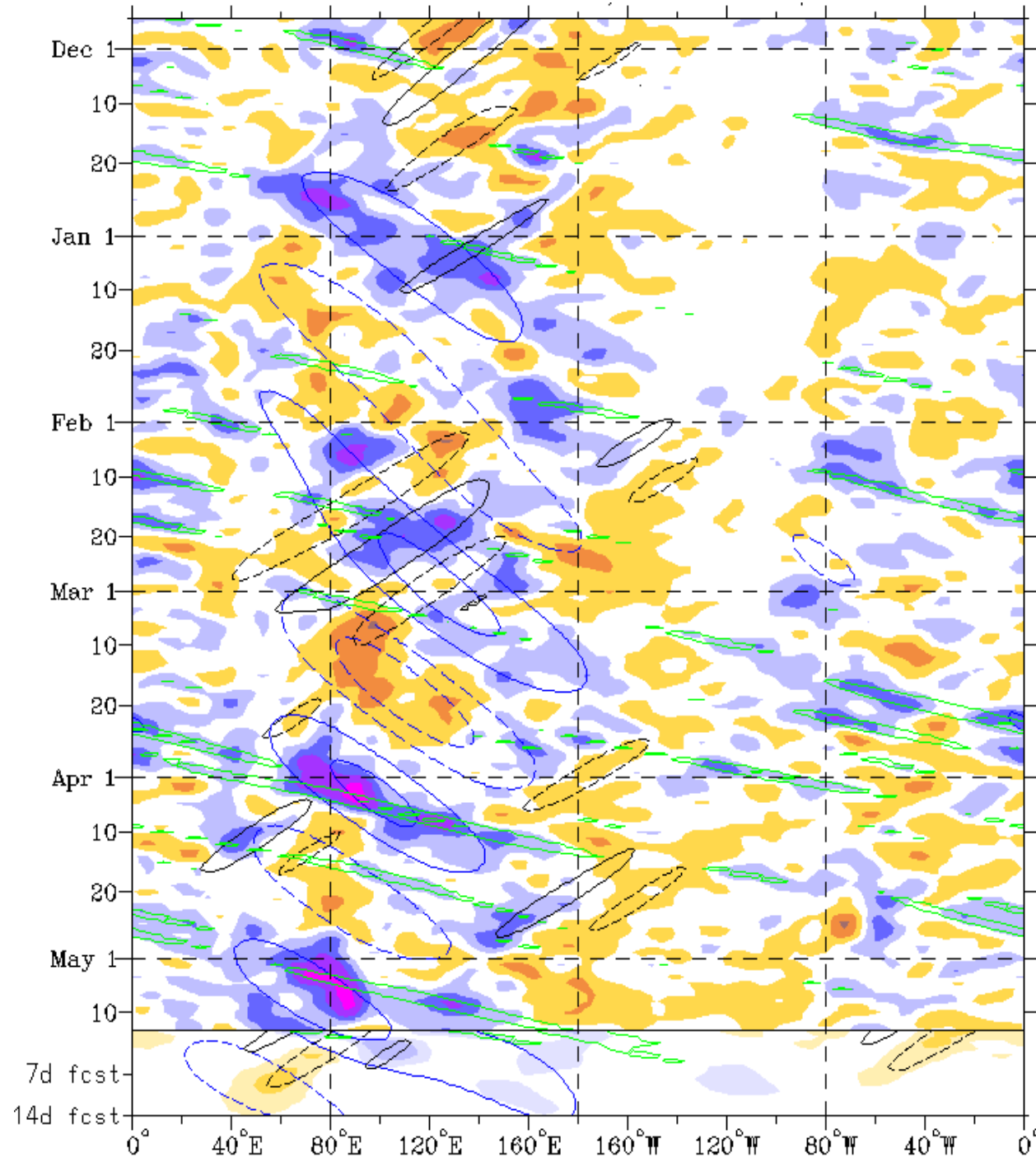
OLR Anomalies

Cool shading
More clouds/rain

Warm shading
Less clouds/rain

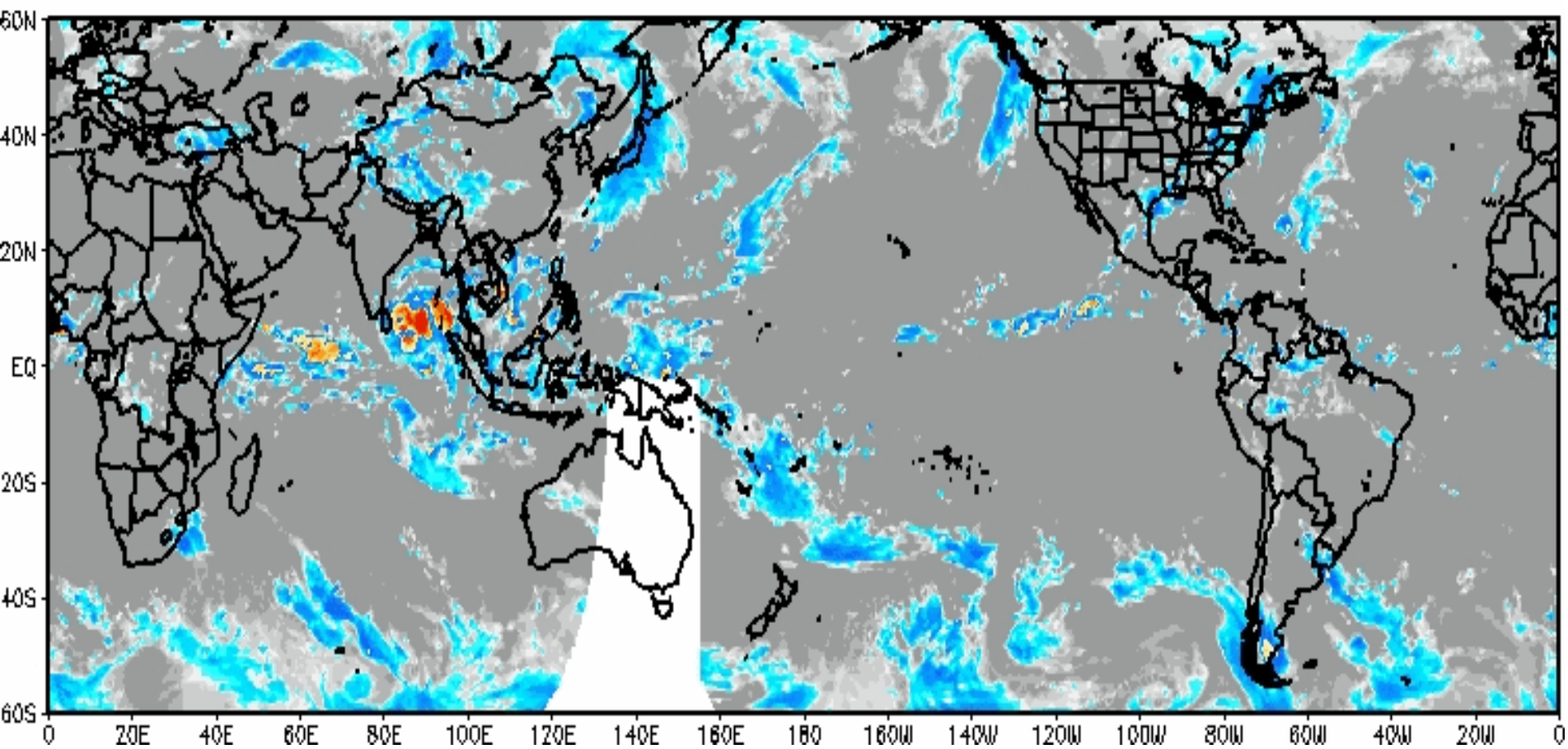
Ovals represent the targeting of
organized tropical variability that
can be used to aid predictions

Green ovals represent
Atmospheric Kelvin Waves

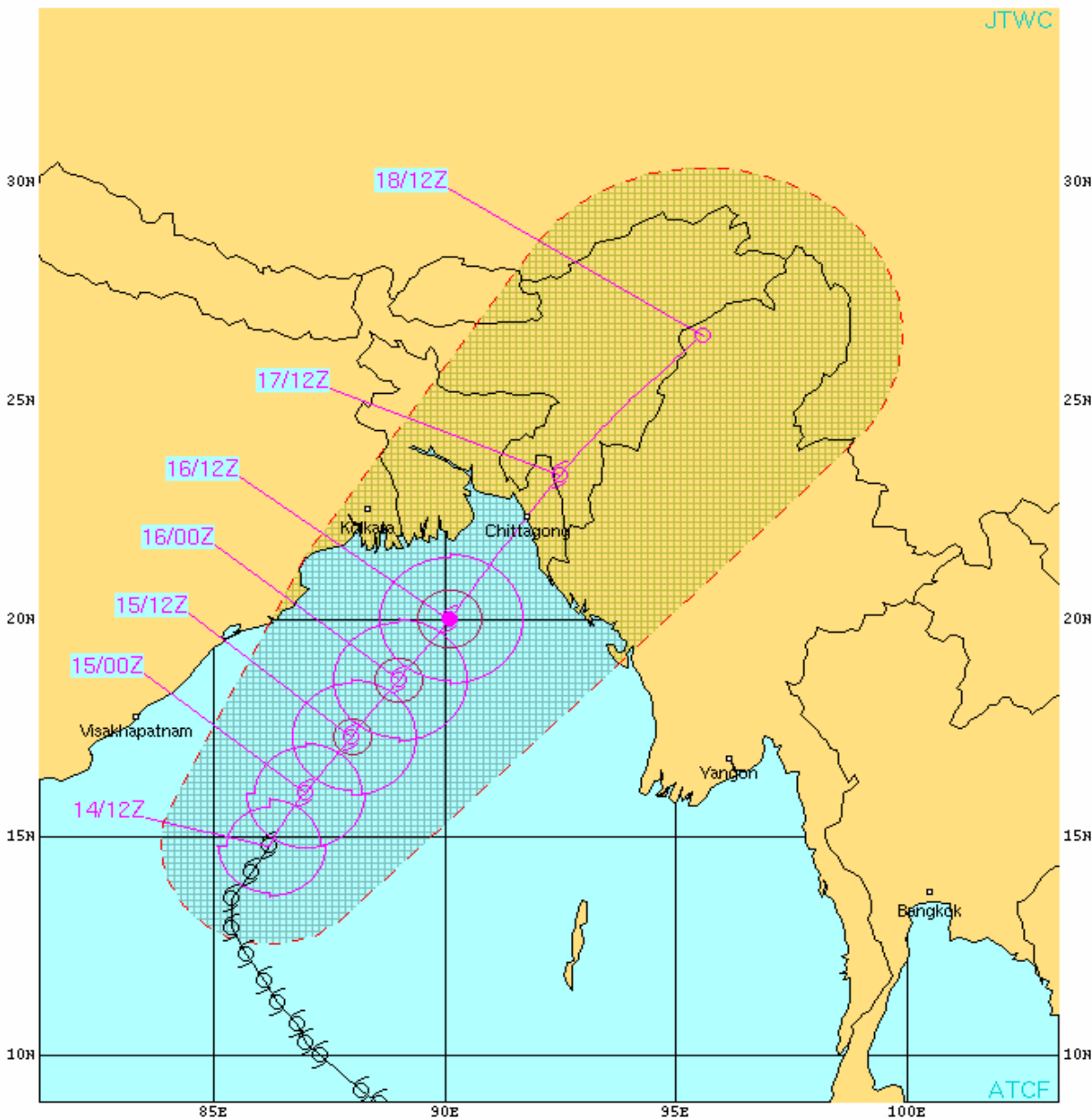


IR Temperatures

0900 UTC 11 MAY 2013



Joint Typhoon Warning Center



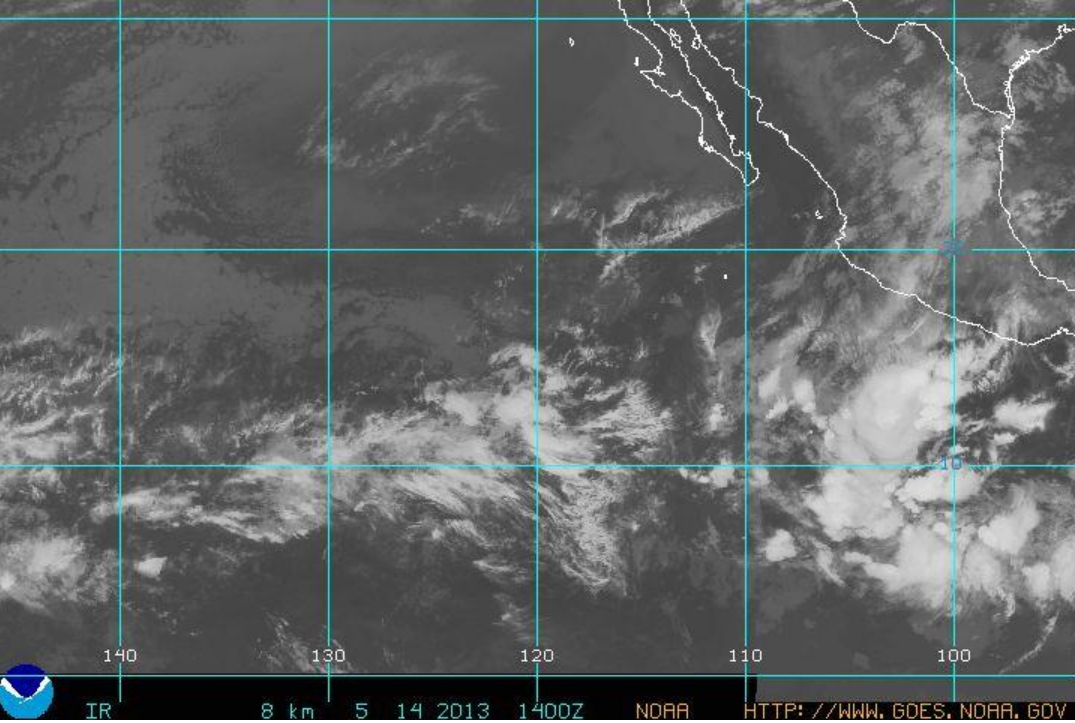
TROPICAL CYCLONE 01B (MAHAASEN) WARNING #18
 WT1031 PGTW 141500
 141200Z POSIT: NEAR 14.8N 86.2E
 MOVING 035 DEGREES TRUE AT 07 KNOTS
 MAXIMUM SIGNIFICANT WAVE HEIGHT: 21 FEET
 14/12Z, WINDS 045 KTS, GUSTS TO 055 KTS
 15/00Z, WINDS 050 KTS, GUSTS TO 065 KTS
 15/12Z, WINDS 055 KTS, GUSTS TO 070 KTS
 16/00Z, WINDS 060 KTS, GUSTS TO 075 KTS
 16/12Z, WINDS 065 KTS, GUSTS TO 080 KTS
 17/12Z, WINDS 050 KTS, GUSTS TO 065 KTS
 18/12Z, WINDS 020 KTS, GUSTS TO 030 KTS

CPA TO:	NM	DTG
KOLKATA	164	16/21Z
CHITTAGONG	3	17/05Z
COXS_BAZAR	9	17/06Z
DHAKA	107	17/07Z

BEARING AND DISTANCE	DIR	DIST (NM)	TAU (HRS)
CHITTAGONG	216	369	24
COXS_BAZAR	217	380	24
KOLKATA	184	319	24

○ LESS THAN 34 KNOTS
 ⊘ 34-63 KNOTS
 ⊚ MORE THAN 63 KNOTS
 PAST 6 HOURLY CYCLONE POSITS IN BLACK
 FORECAST CYCLONE POSITS IN COLOR





SST Anomalies (°C)
08 MAY 2013

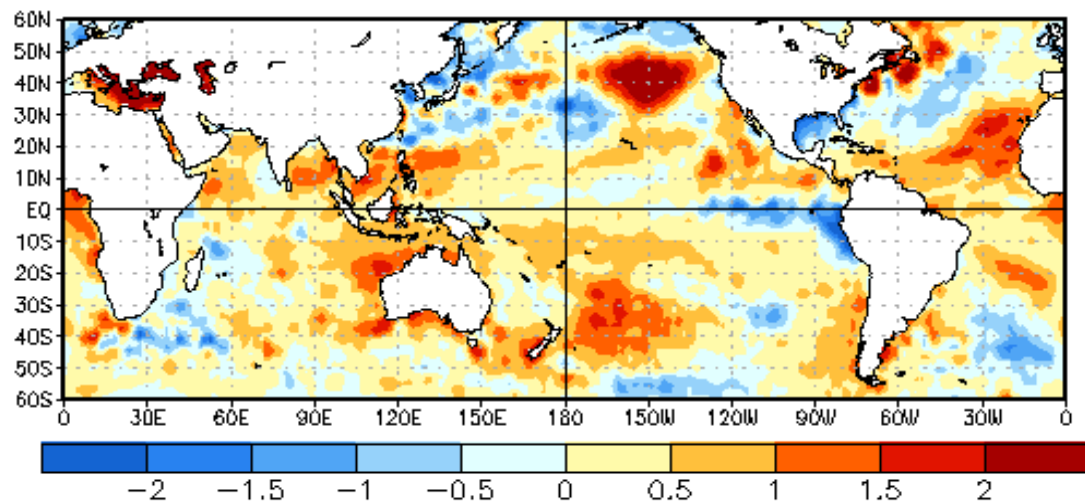
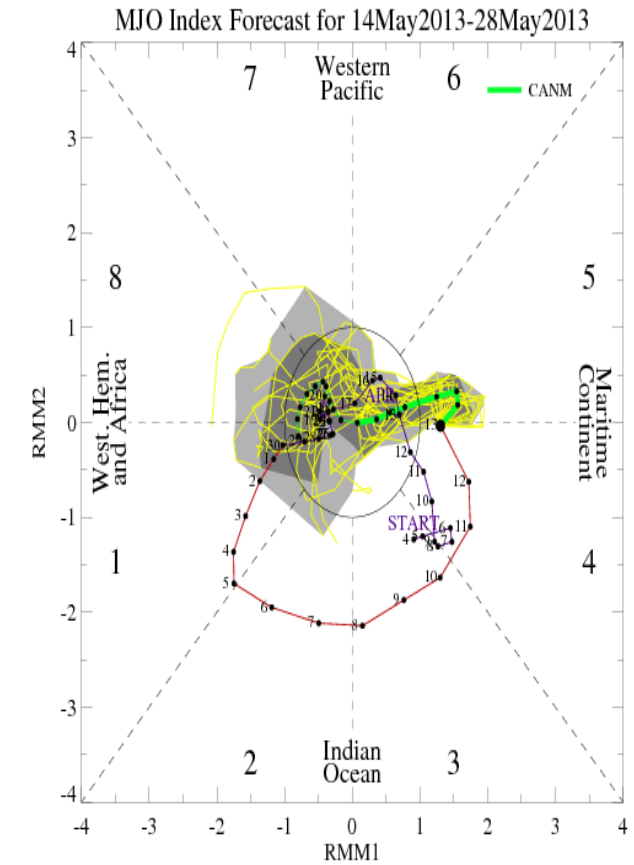
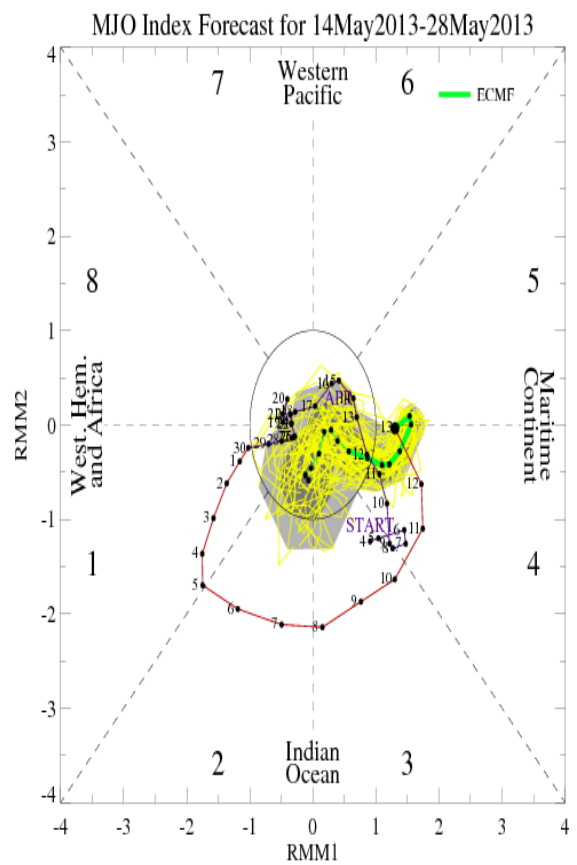
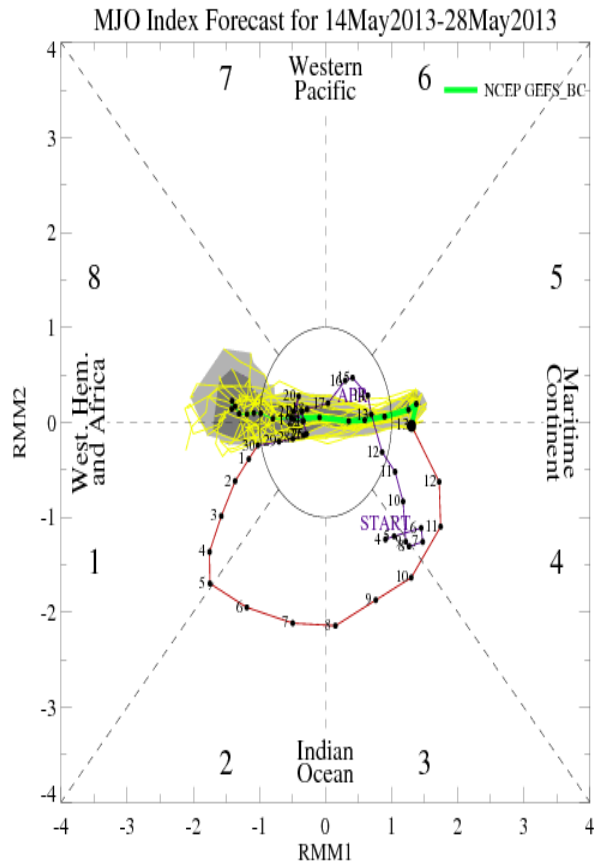


Table 2. Progress of the average eastern Pacific season (1971-2009). Date upon which the following number of events would normally have occurred.

Number	Named systems	Hurricanes	Category 3 or greater
1	June 10	June 26	July 19
2	June 25	July 14	Aug 19
3	July 5	July 29	Sep 20
4	July 14	Aug 12	-
5	July 22	Aug 26	-
6	July 30	Sep 9	-
7	Aug 7	Sep 24	-
8	Aug 15	Oct 15	-
9	Aug 24	-	-
10	Sep 1	-	-
11	Sep 10	-	-
12	Sep 19	-	-
13	Sep 28	-	-
14	Oct 11	-	-
15	Nov 5	-	-

MJO Observation/Forecast

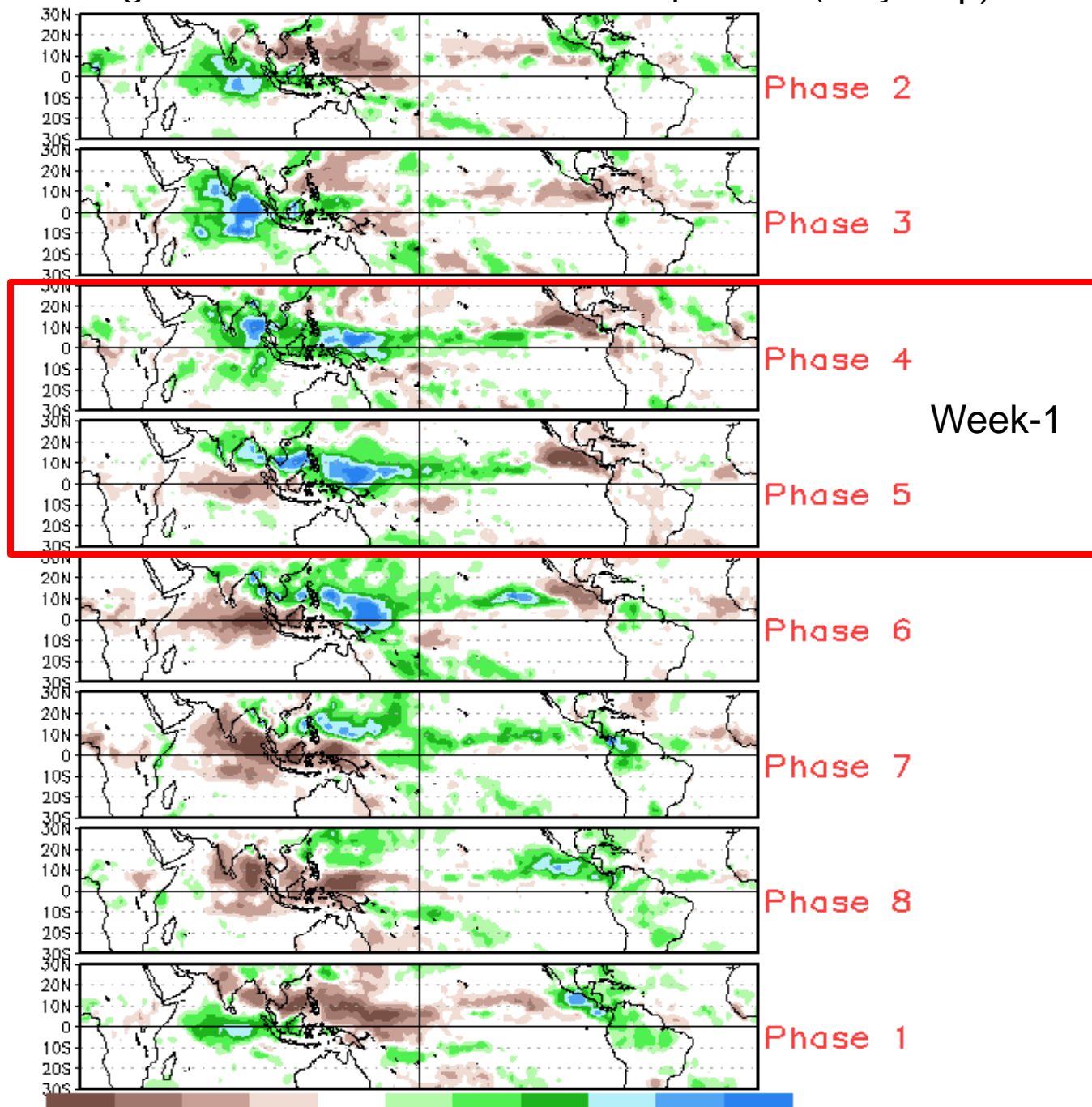


GFS

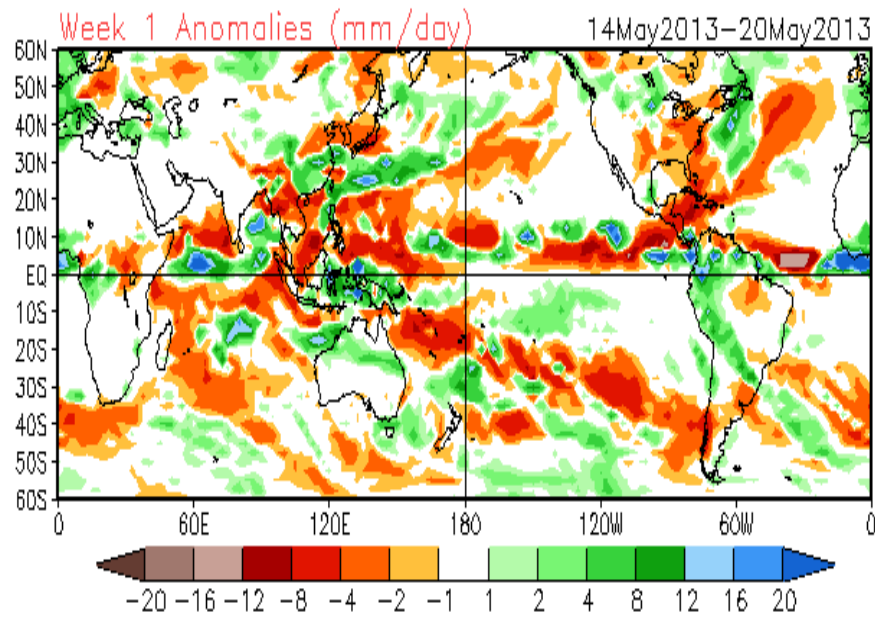
ECMWF

CMC

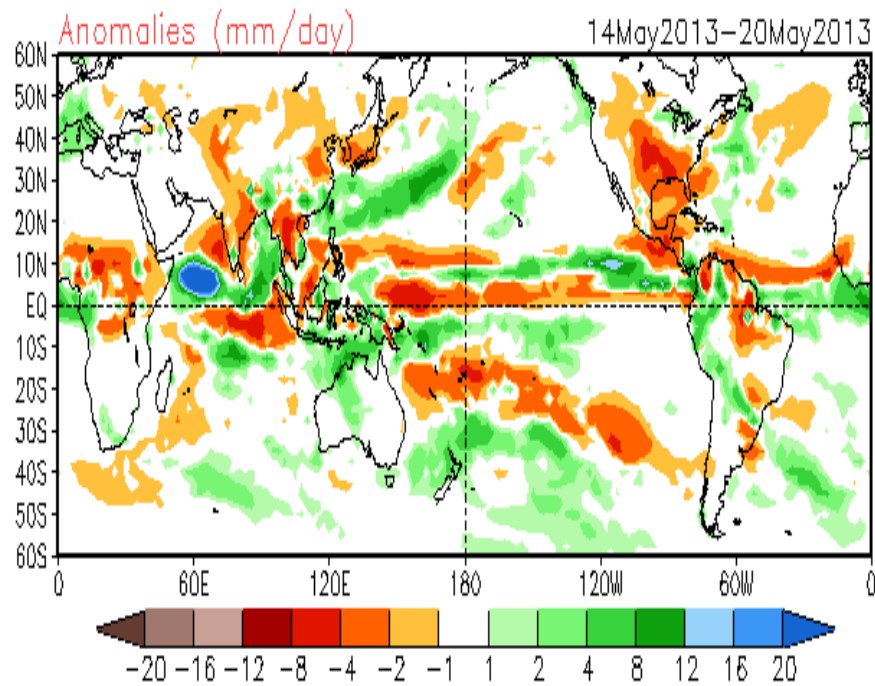
Average Conditions when the MJO is present (May-Sep)



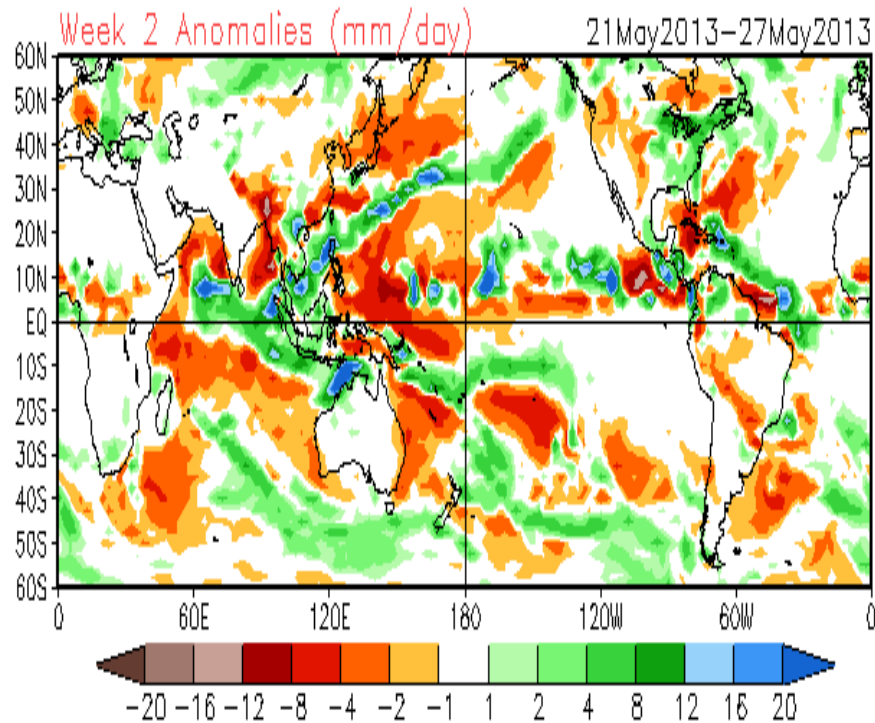
CFS



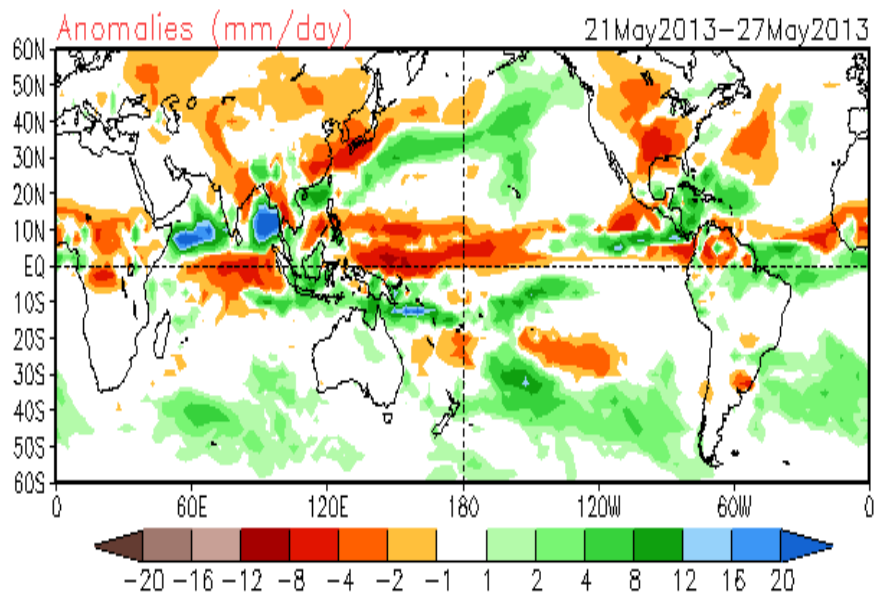
GFS

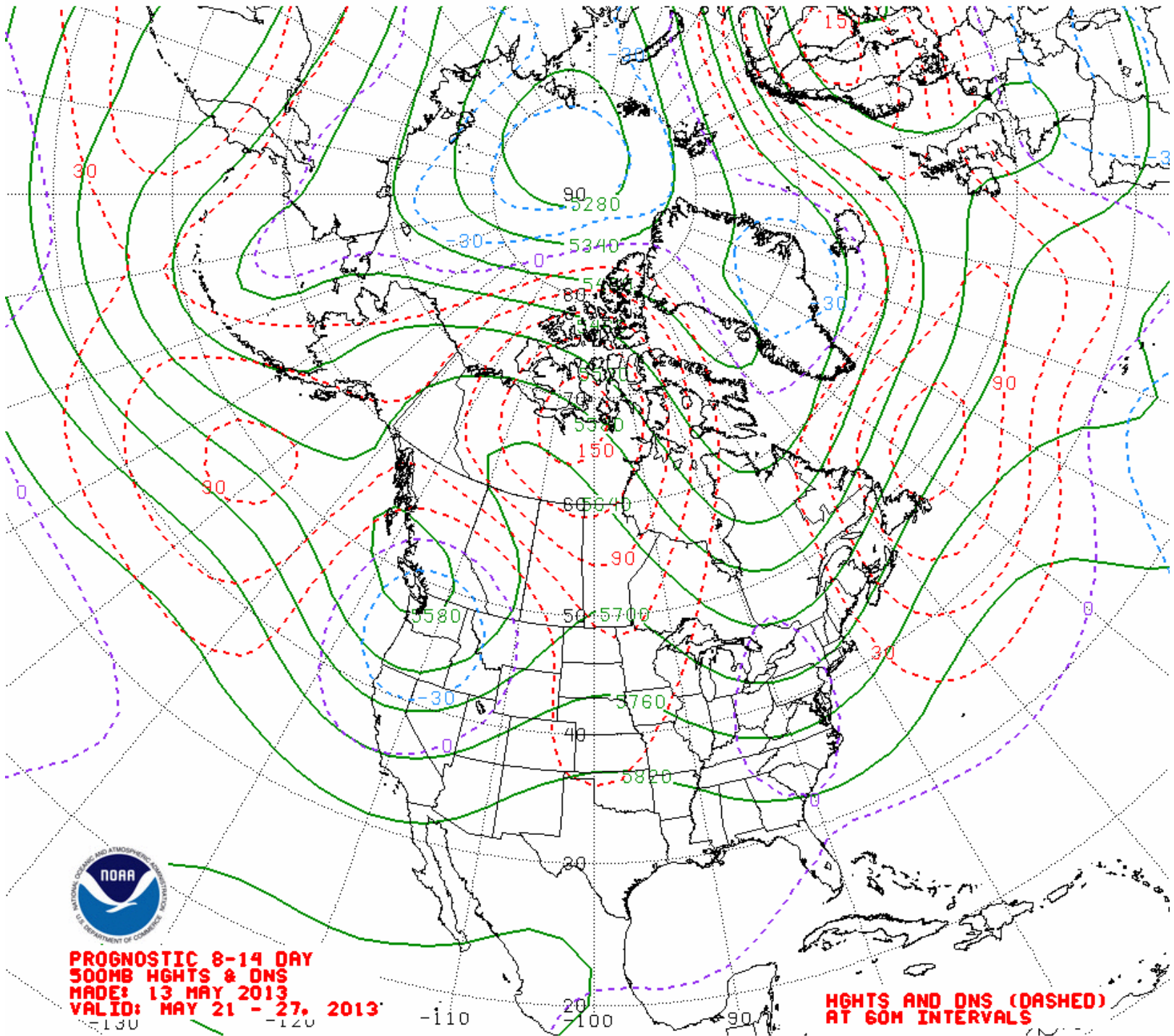


CFS



GFS





**PROGNOSTIC 8-14 DAY
500MB HGHTS & DNS
MADE: 13 MAY 2013
VALID: MAY 21 - 27, 2013**

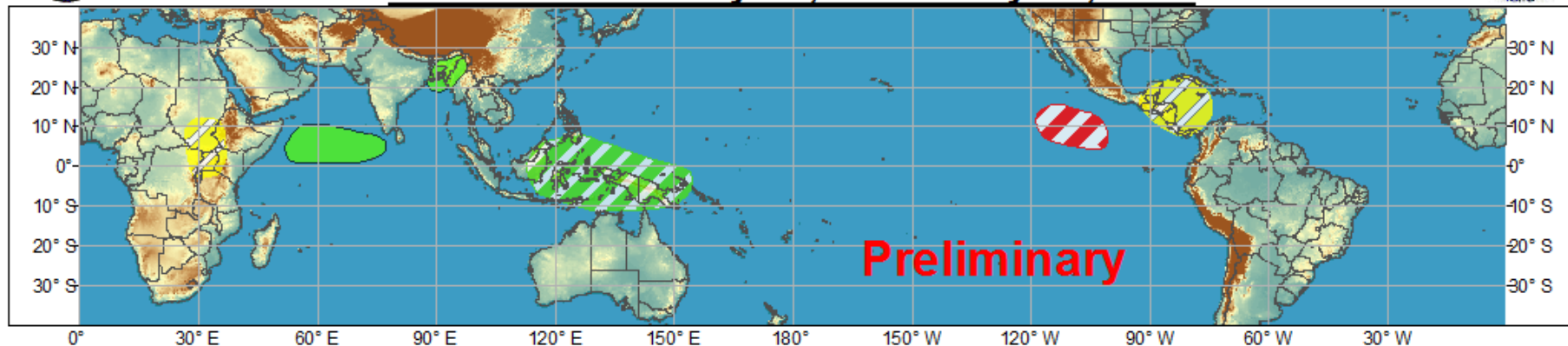
**HGHTS AND DNS (DASHED)
AT 60M INTERVALS**



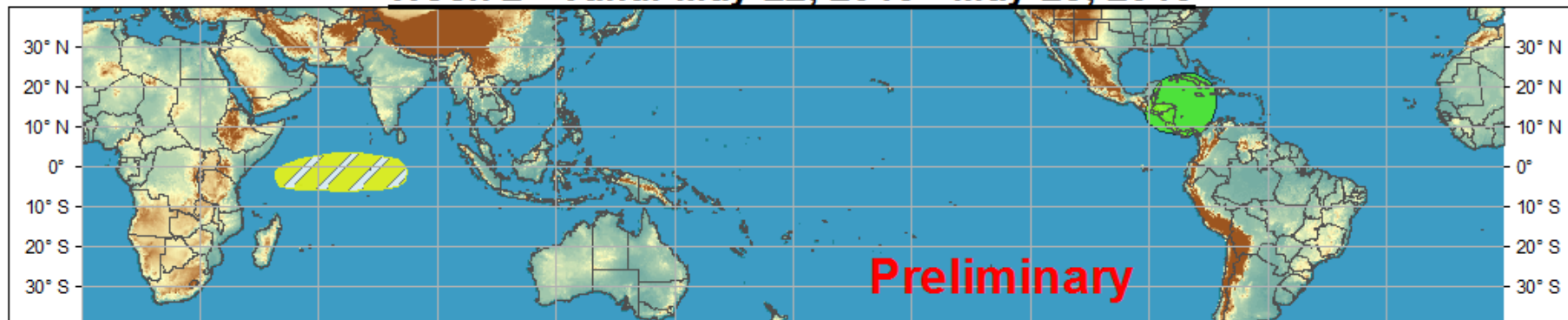
Global Tropics Hazards and Benefits Outlook - Climate Prediction Center













Week 1 - Valid: May 15, 2013 - May 21, 2013



Week 2 - Valid: May 22, 2013 - May 28, 2013



Confidence
High Moderate

- | | | |
|-----------------------------------|---|--|
| Tropical Cyclone Formation |   | Development of a tropical cyclone that eventually reaches tropical storm/cyclone strength. |
| Above-average rainfall |   | Weekly total rainfall in the upper third of the historical range. |
| Below-average rainfall |   | Weekly total rainfall in the lower third of the historical range. |
| Above-normal temperatures |   | 7-day mean temperatures in the upper third of the historical range. |
| Below-normal temperatures |   | 7-day mean temperatures in the lower third of the historical range. |

Produced: 05/13/2013

Forecaster: Pugh

Product is updated once per week. The product targets broad scale conditions integrated over a 7-day period for US interests only. Consult your local responsible forecast agency.

