

Global Tropics Hazards And Benefits Outlook

May 28, 2013

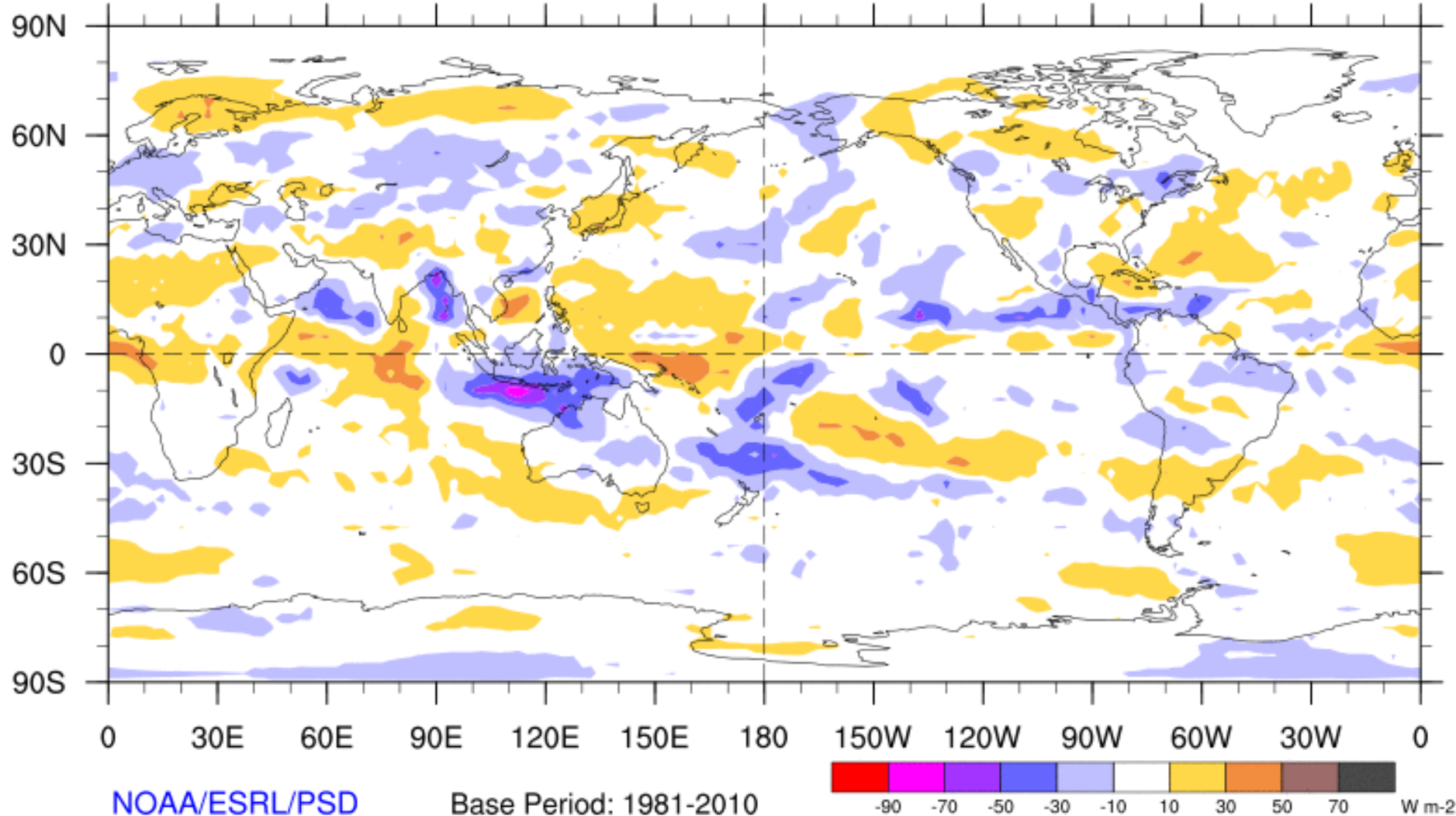
Steve Baxter

Outline

1. Review of Recent Conditions
2. Synopsis of Climate Modes
3. GTH Outlook and Forecast Discussion

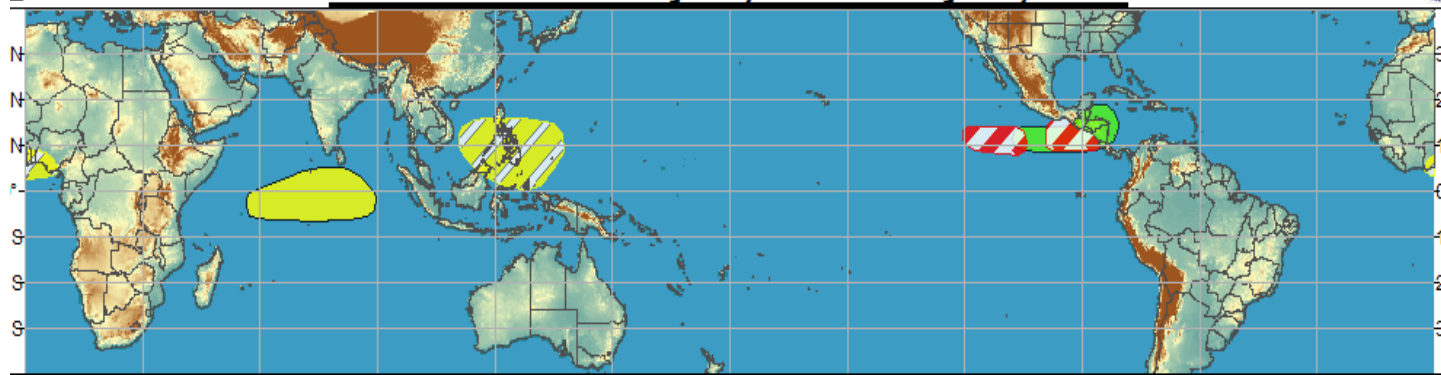
7-Day Average OLR Anomaly

2013/05/20 - 2013/05/26

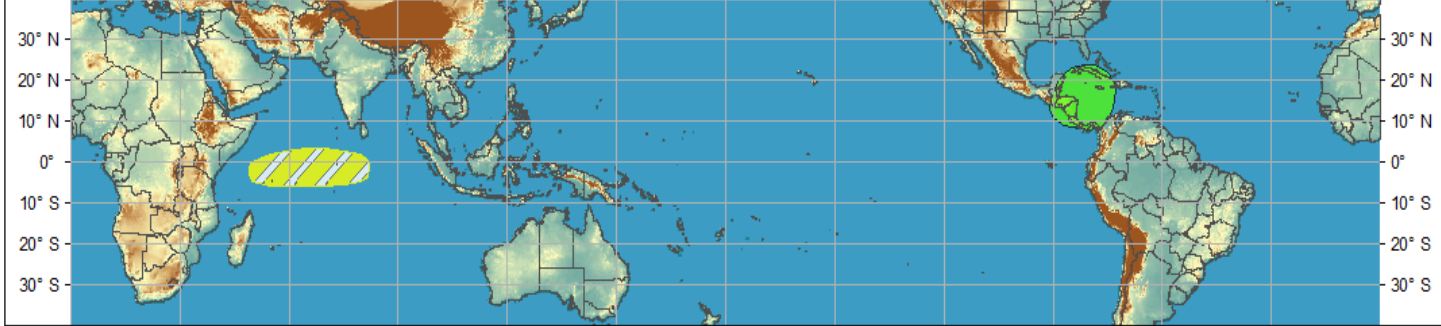


Outlook Review

Week 1 - Valid: May 22, 2013 - May 28, 2013

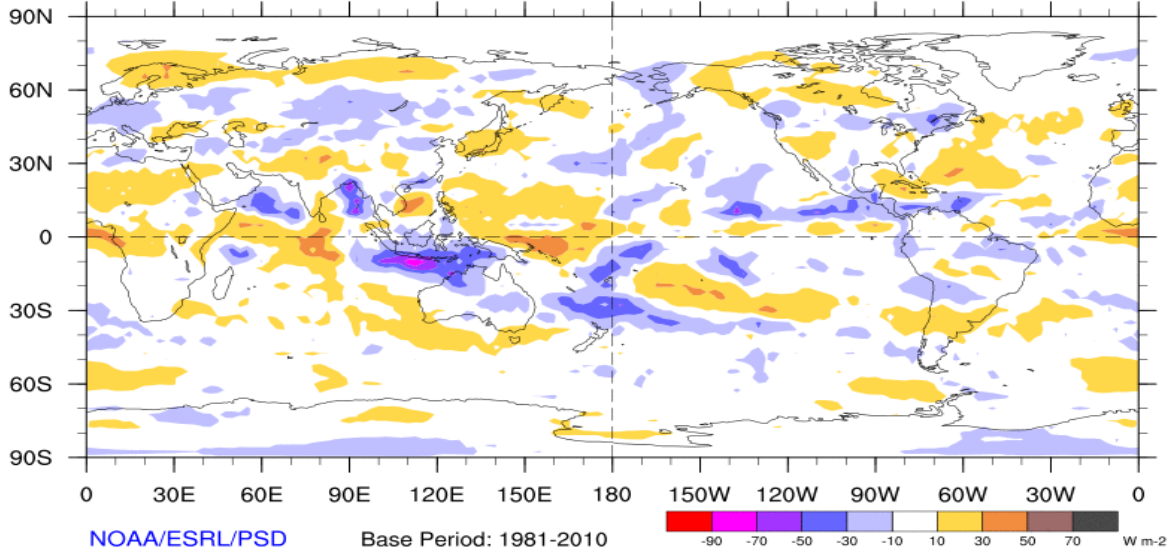


Week 2 - Valid: May 22, 2013 - May 28, 2013



7-Day Average OLR Anomaly

2013/05/20 - 2013/05/26



NOAA/ESRL/PSD

Base Period: 1981-2010

-90 -70 -50 -30 -10 10 30 50 70 W m-2

Cool shading
More clouds/rain

Warm shading
Less clouds/rain

Synopsis of Climate Modes

ENSO:

- ENSO-neutral conditions are favored to continue through late boreal summer 2013.

MJO and other subseasonal tropical variability:

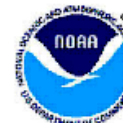
- The MJO has remained weak over the past seven to ten days.
- Model MJO index forecasts indicate a weak signal very early during week-1 followed by renewed organization with the enhanced phase centered across Africa. There is a high amount of model spread, however.

Tropics:

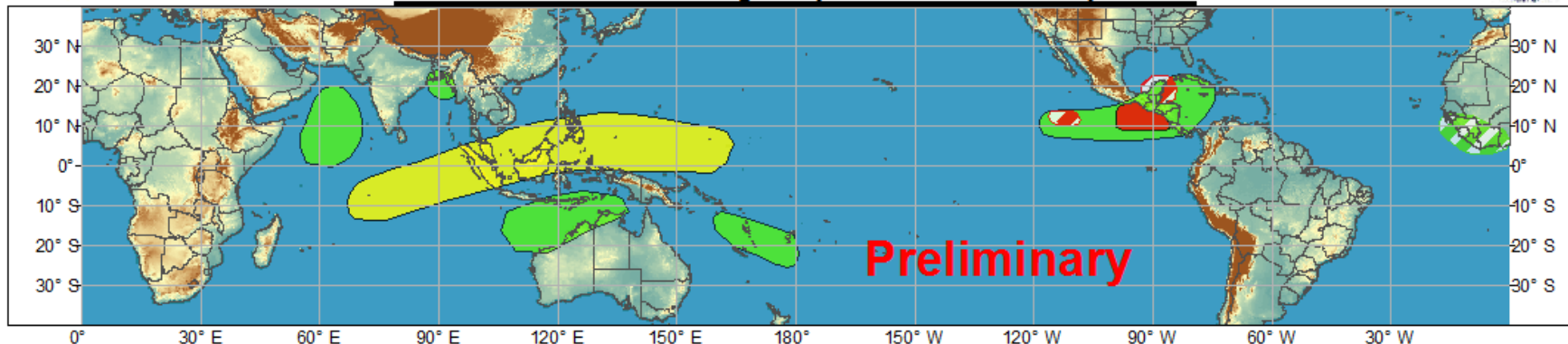
- Elevated odds for TC development in the Caribbean during weeks 1 and 2. Caribbean looks to remain active during the next two weeks.



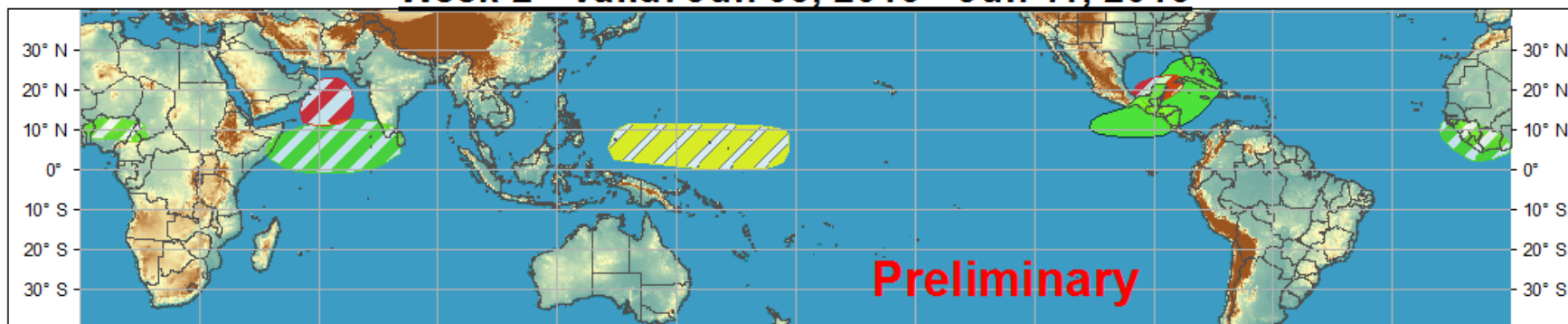
Global Tropics Hazards and Benefits Outlook - Climate Prediction Center



Week 1 - Valid: May 29, 2013 - Jun 04, 2013



Week 2 - Valid: Jun 05, 2013 - Jun 11, 2013



Produced: 05/28/2013

Forecaster: Baxter

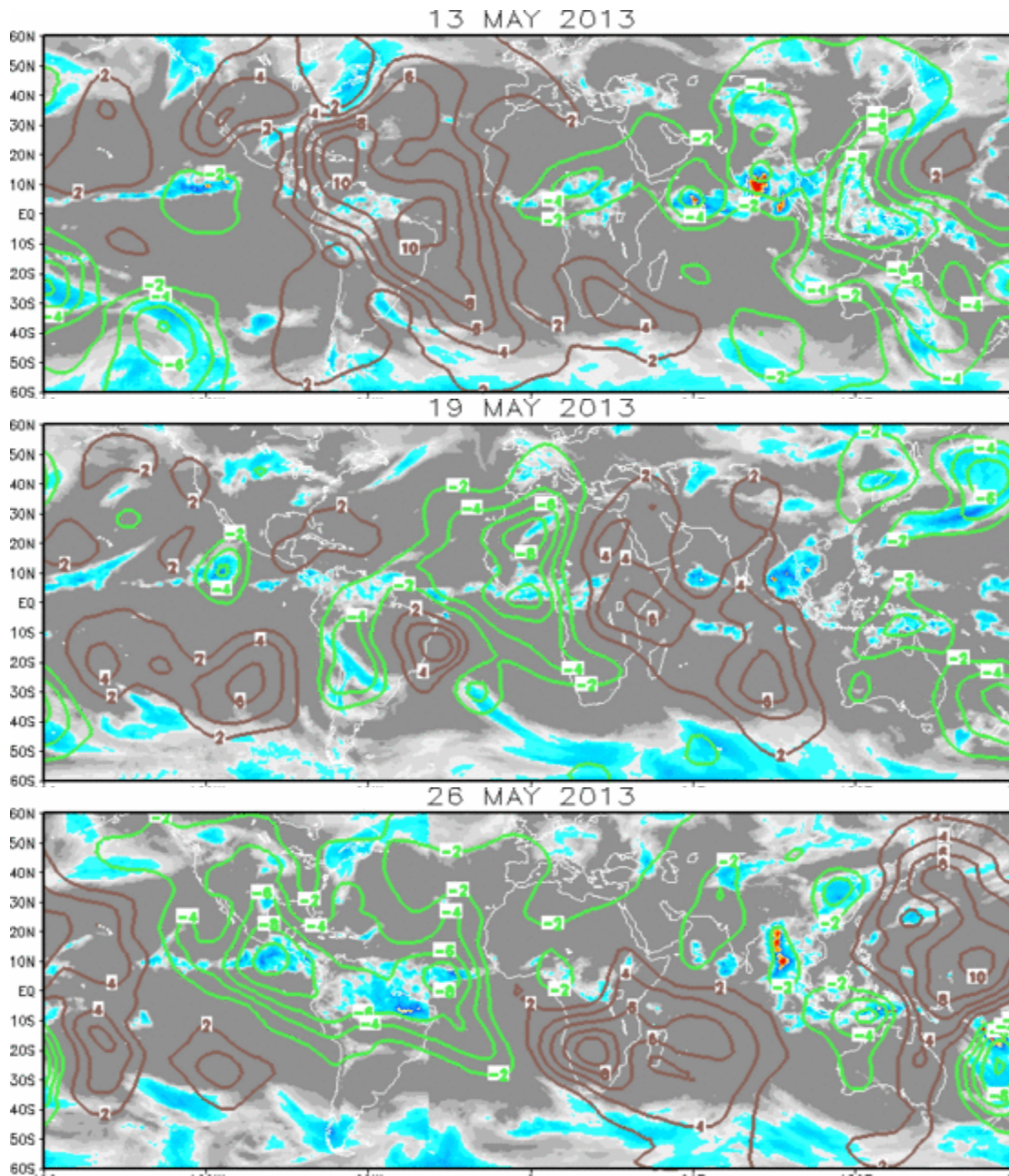
	Confidence		
	High	Moderate	
Tropical Cyclone Formation			Development of a tropical cyclone that eventually reaches tropical storm/cyclone strength.
Above-average rainfall			Weekly total rainfall in the upper third of the historical range.
Below-average rainfall			Weekly total rainfall in the lower third of the historical range.
Above-normal temperatures			7-day mean temperatures in the upper third of the historical range.
Below-normal temperatures			7-day mean temperatures in the lower third of the historical range.

Product is updated once per week. The product targets broad scale conditions integrated over a 7-day period for US interests only. Consult your local responsible forecast agency.

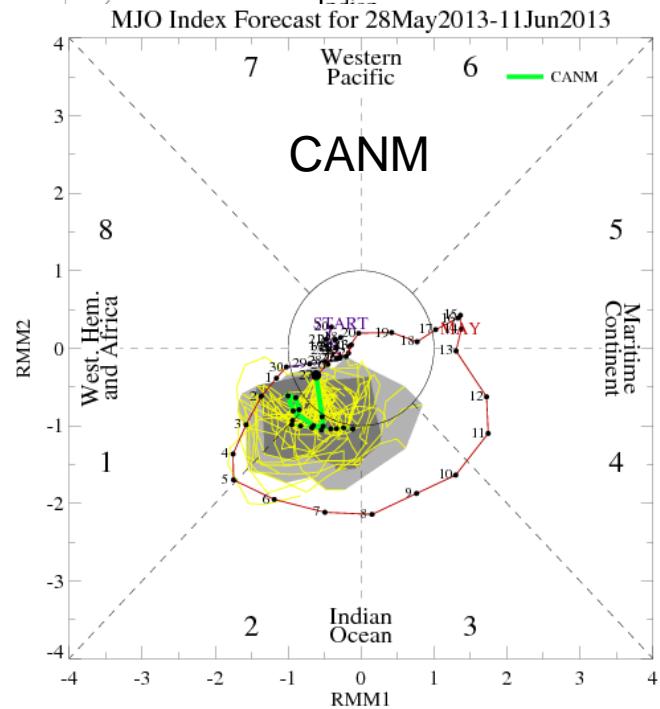
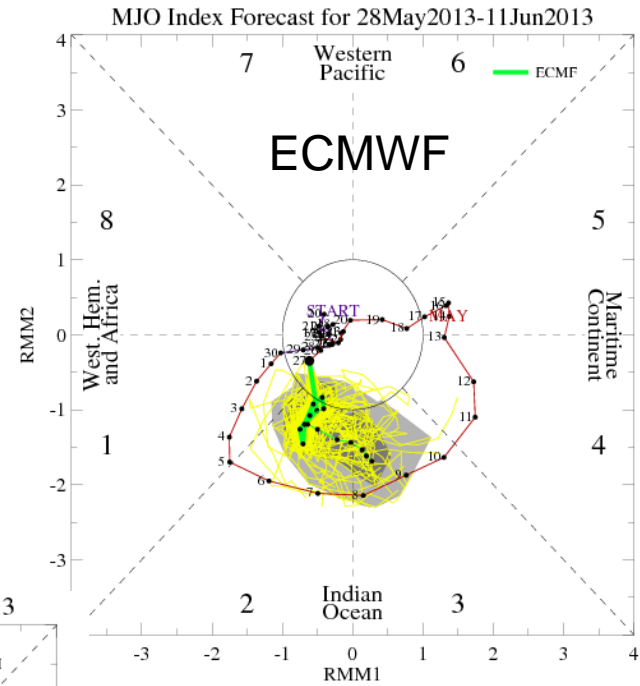
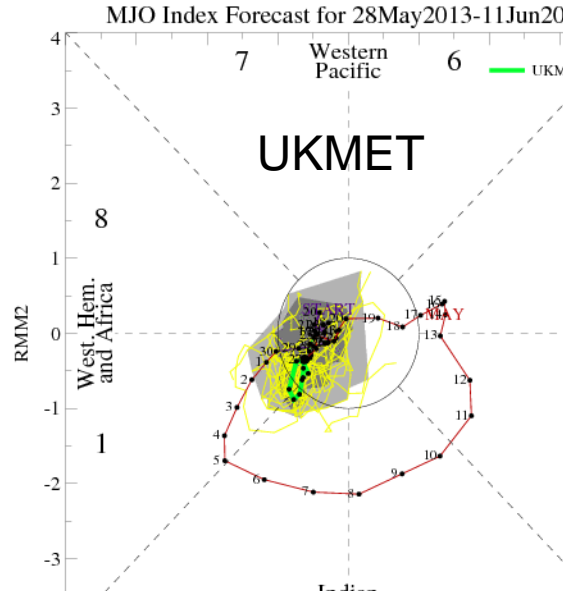
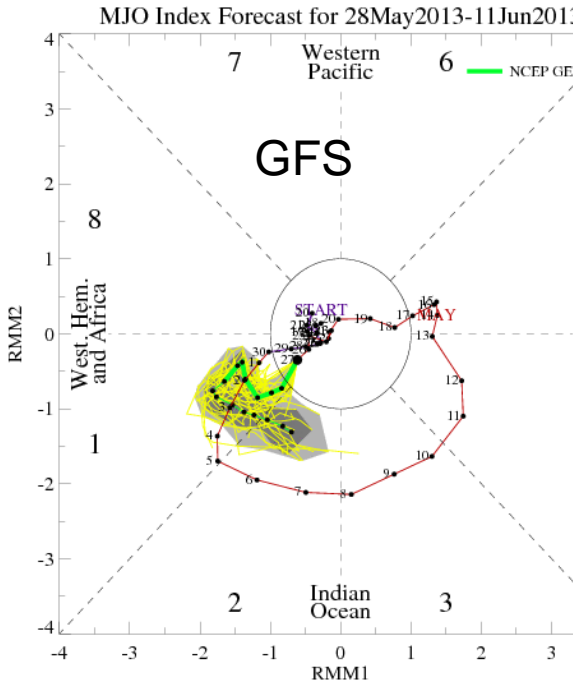


IR Satellite & 200-hpa Velocity Potential Anomalies

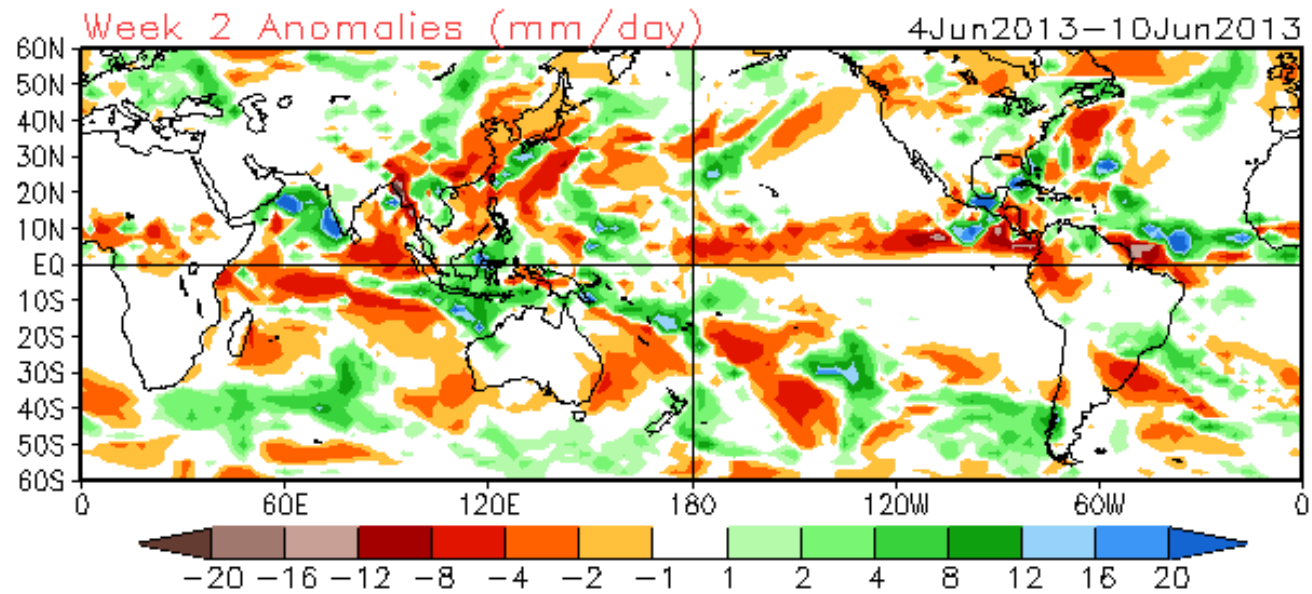
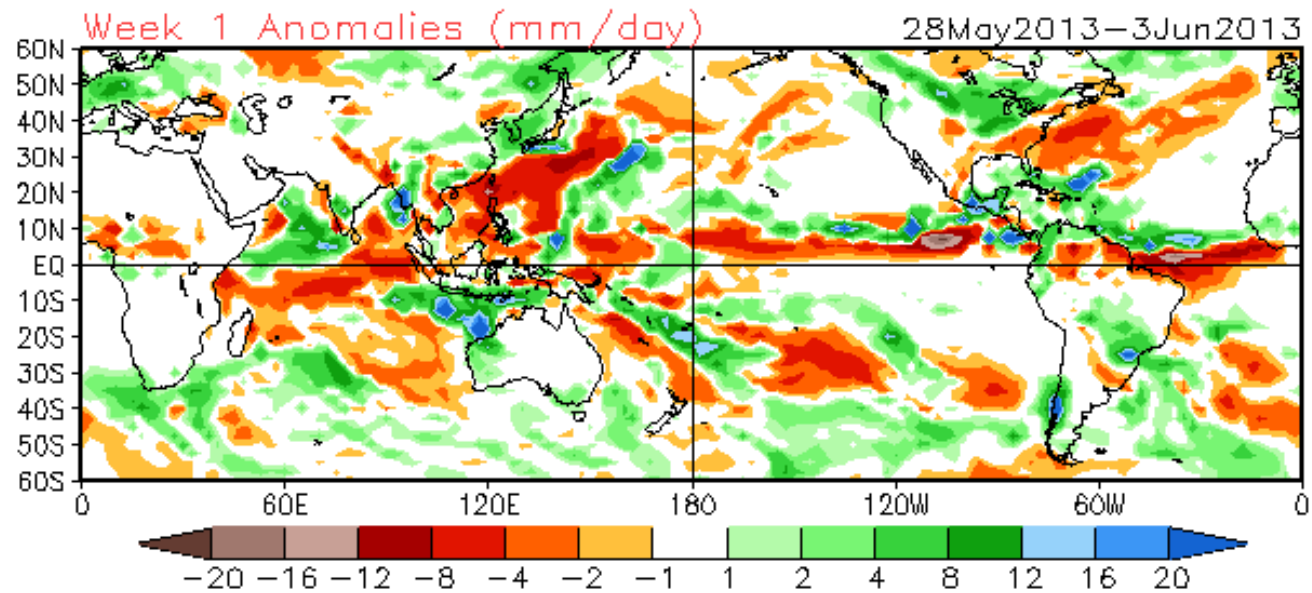
Green: Enhanced Divergence Brown: Enhanced Convergence



MJO Observation/Forecast

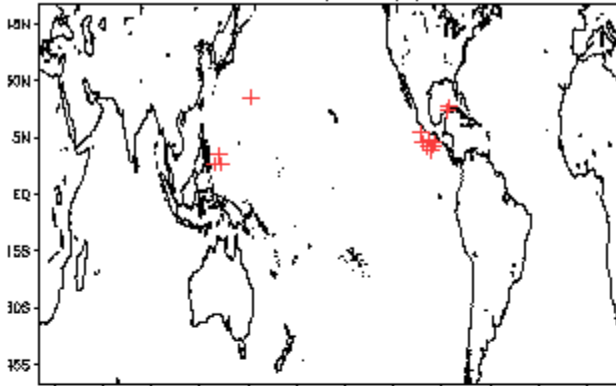


CFSv2 Forecast for Weeks 1 and 2

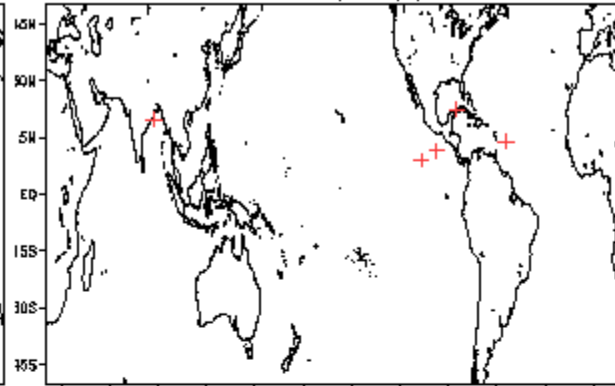


June Tropical Storm Formation by MJO phase

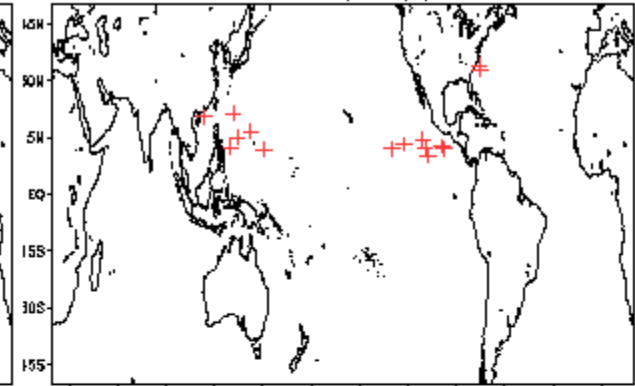
Phase 1 (104 days) 14 storms



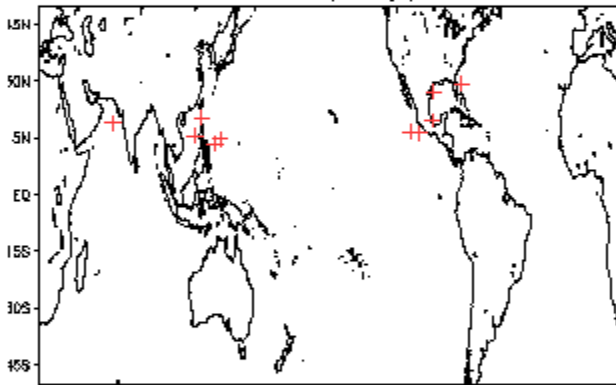
Phase 4 (80 days) 6 storms



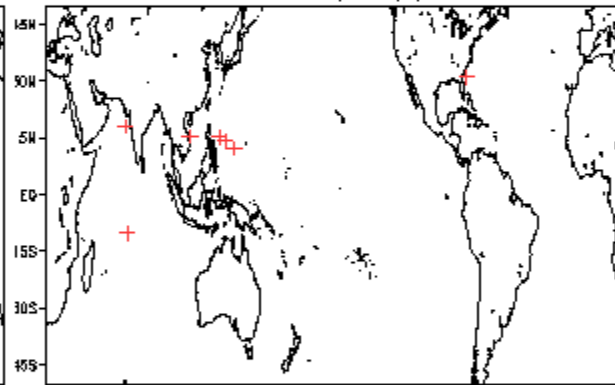
Phase 7 (45 days) 16 storms



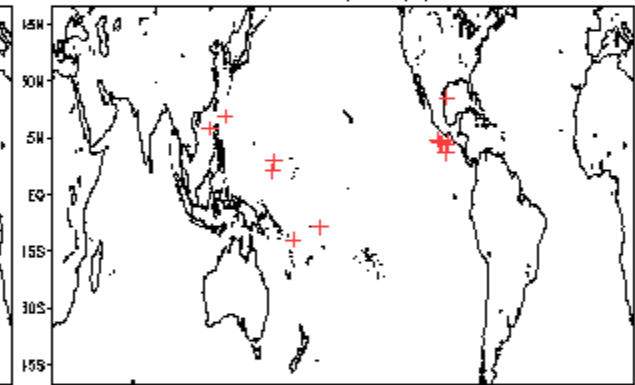
Phase 2 (82 days) 11 storms



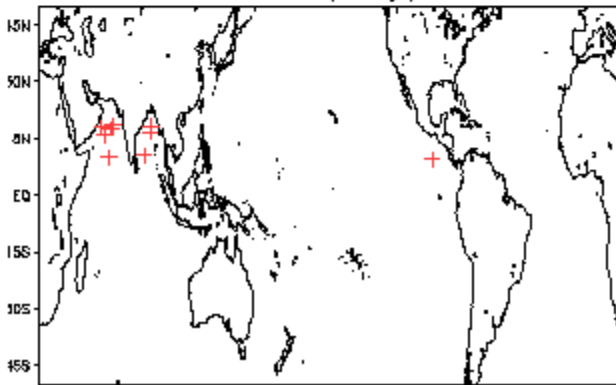
Phase 5 (77 days) 8 storms



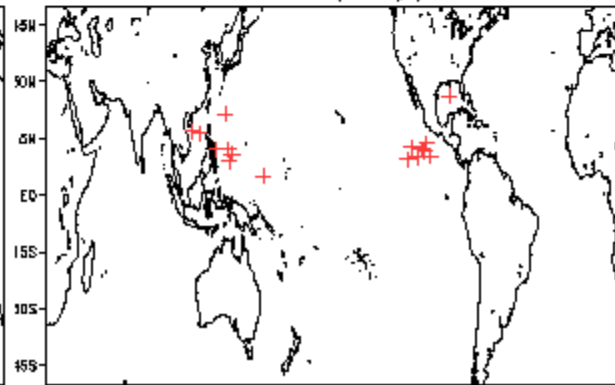
Phase 8 (70 days) 15 storms



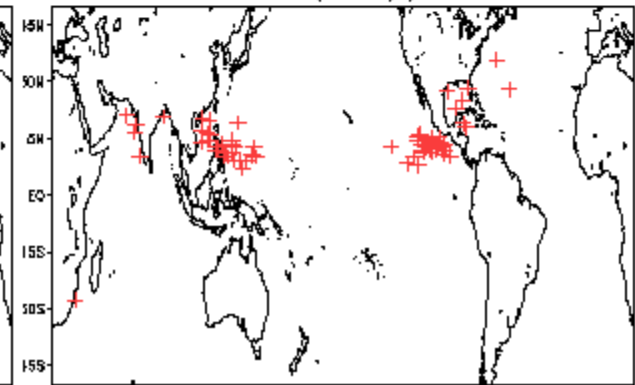
Phase 3 (57 days) 10 storms

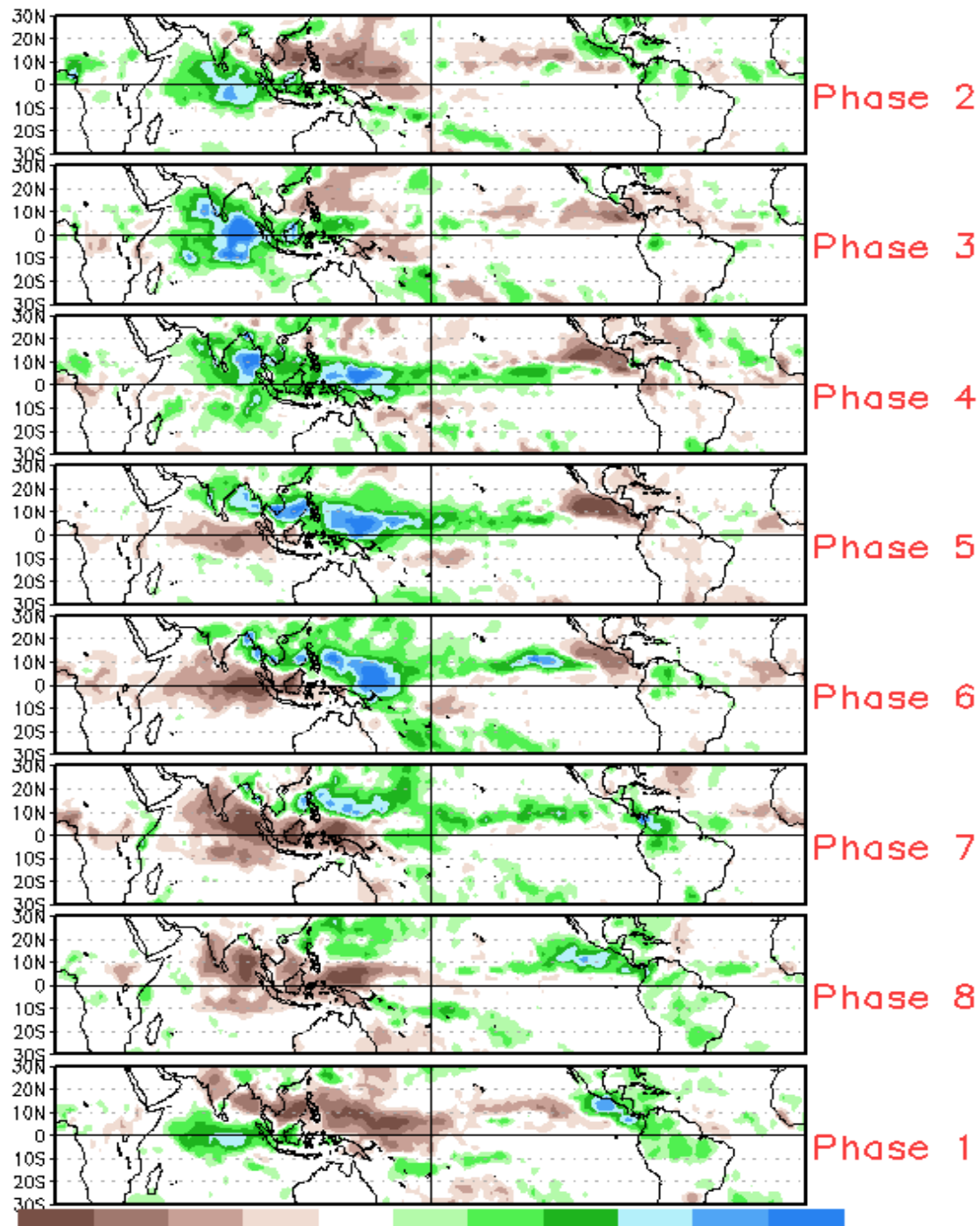


Phase 6 (82 days) 17 storms



Null (423 days) 71 storms







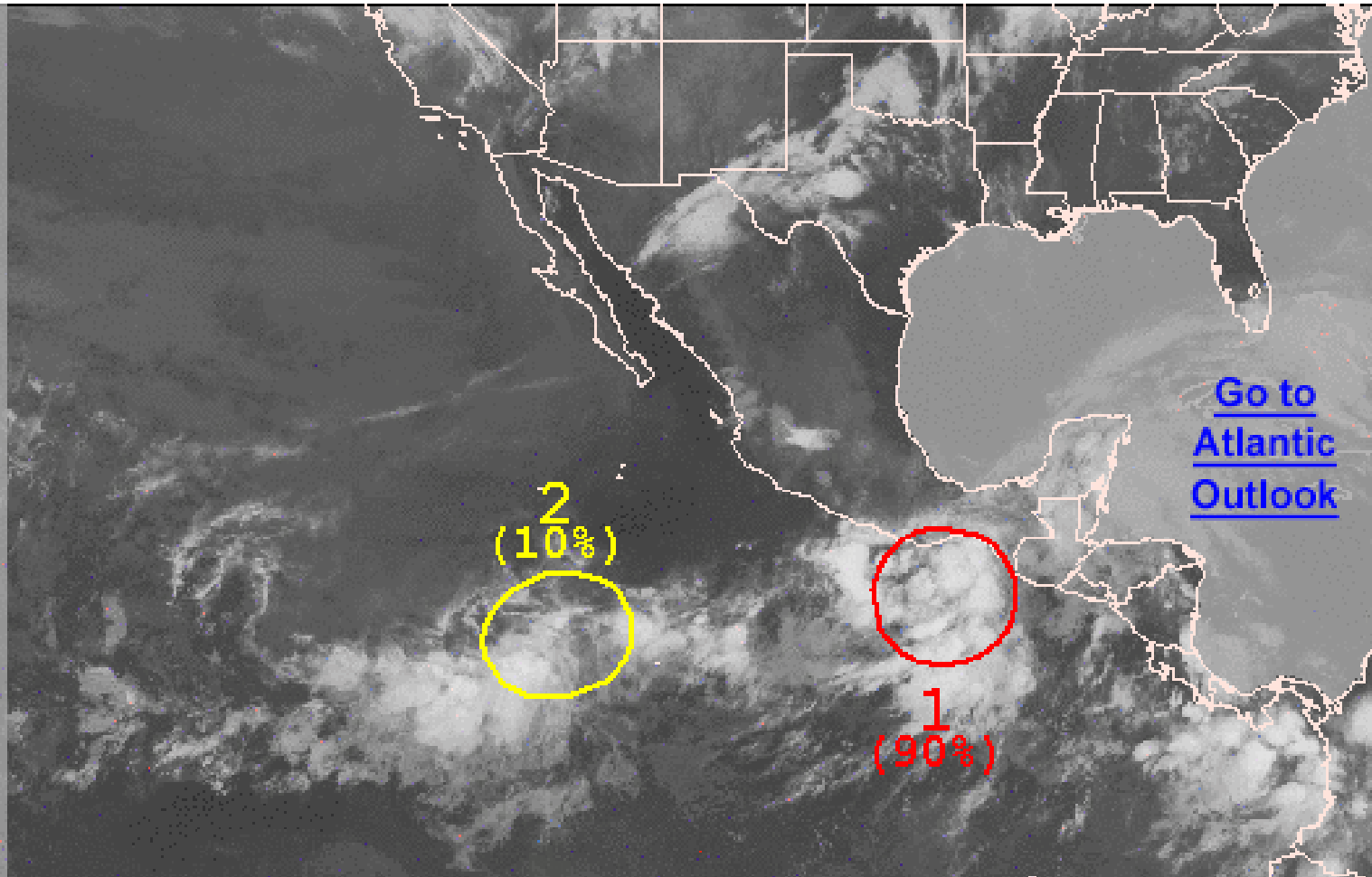
Graphical Tropical Weather Outlook

National Hurricane Center Miami, Florida



[Go to Central Pacific Hurricane Center](#)

[Go to Atlantic Outlook](#)



500 AM PDT TUE MAY 28 2013

Satellite Image: 0422 AM PDT

Outlined areas denote current position of systems discussed in the Tropical Weather Outlook. Color indicates probability of tropical cyclone formation within 48 hours.

 Low <30%

 Medium 30-50%

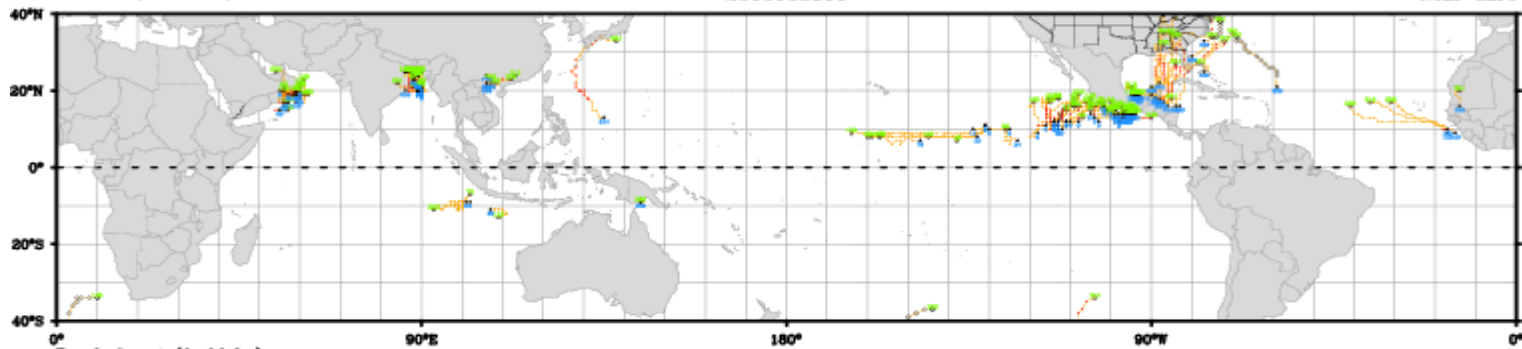
 High >50%

CWB TC Tracker for NCEP GEFS (Fuzzy_AllCriteria)

TC Track(0-384 hr)

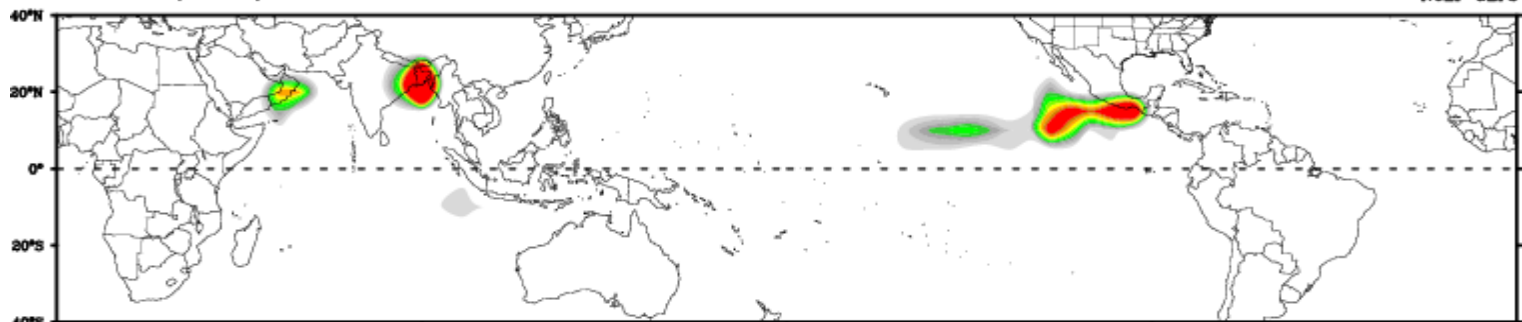
2013052800

NCEP GEFS



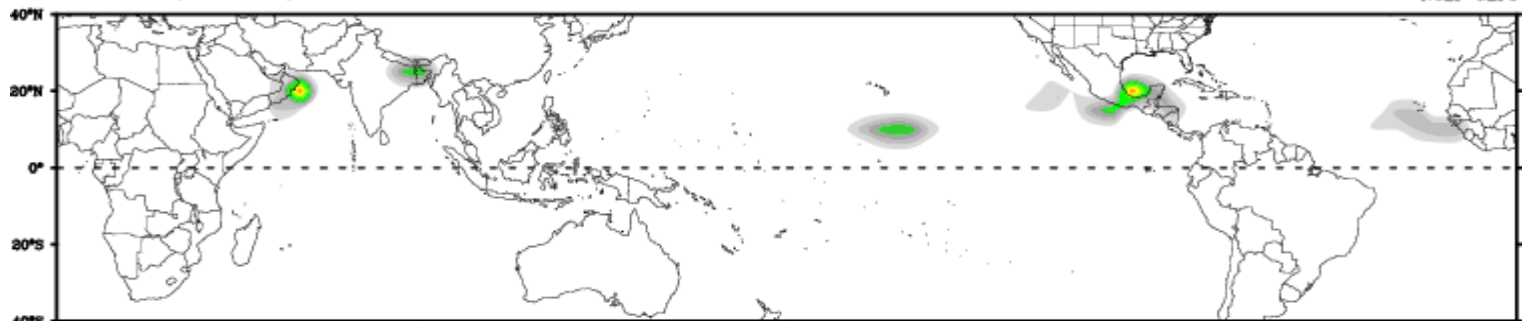
Track Count (0-96 hr)

NCEP GEFS



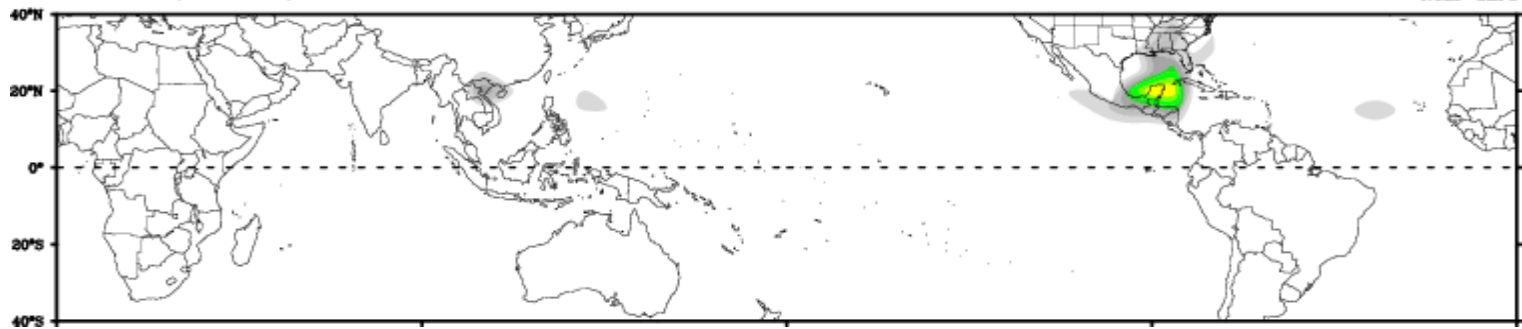
Track Count (102-192 hr)

NCEP GEFS

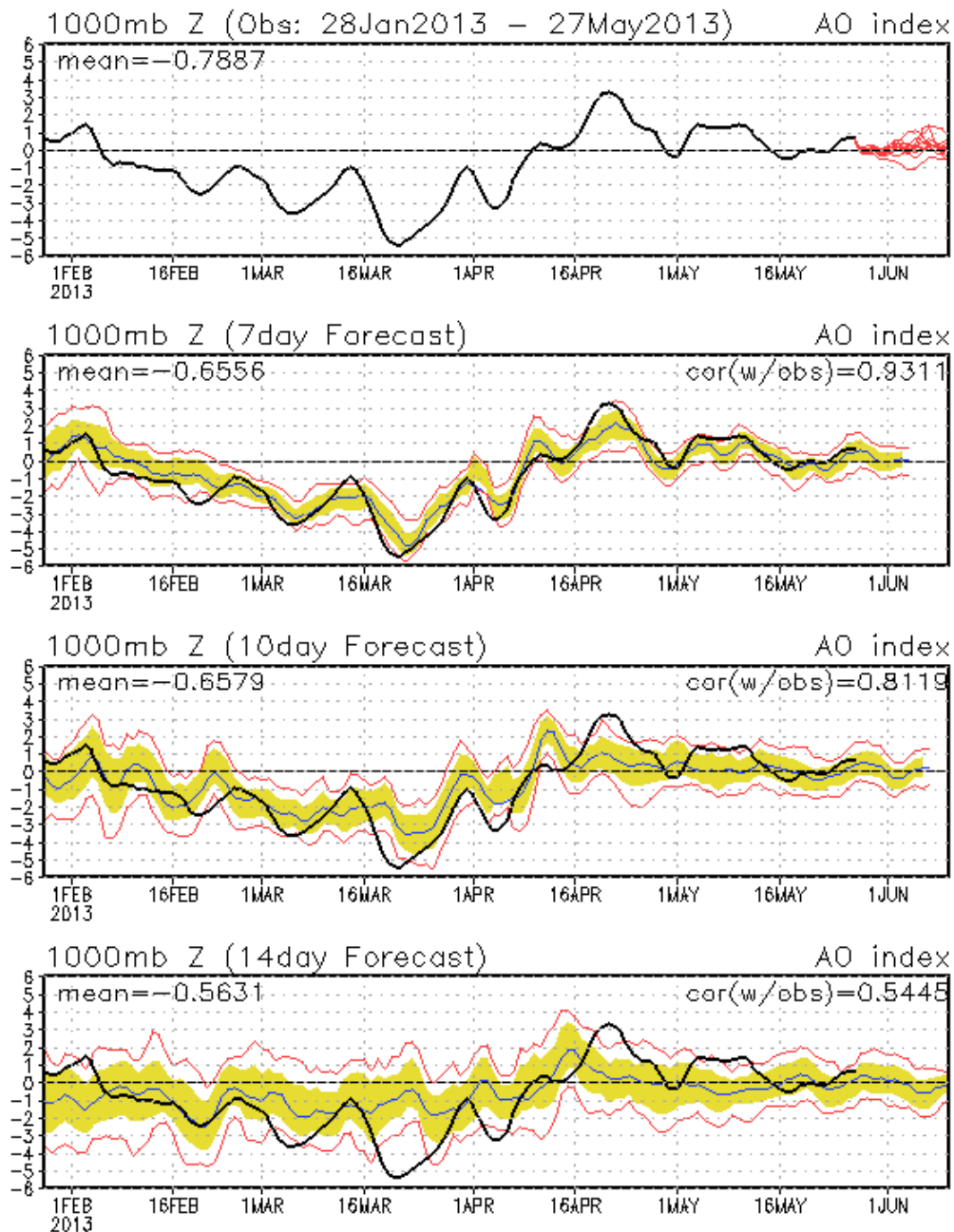


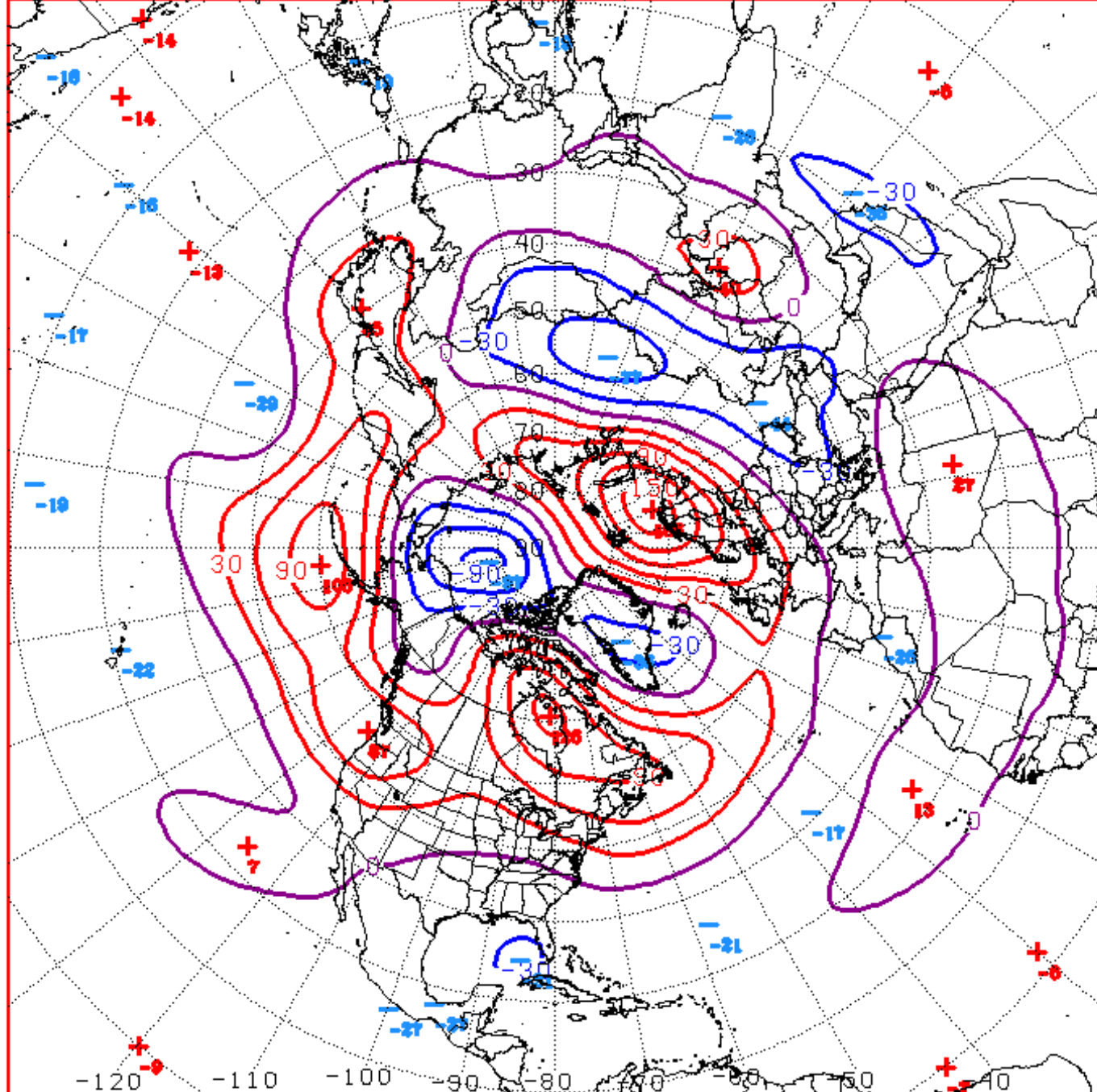
Track Count (198-288 hr)

NCEP GEFS



AO: Observed & ENSM forecasts

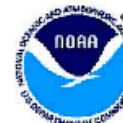




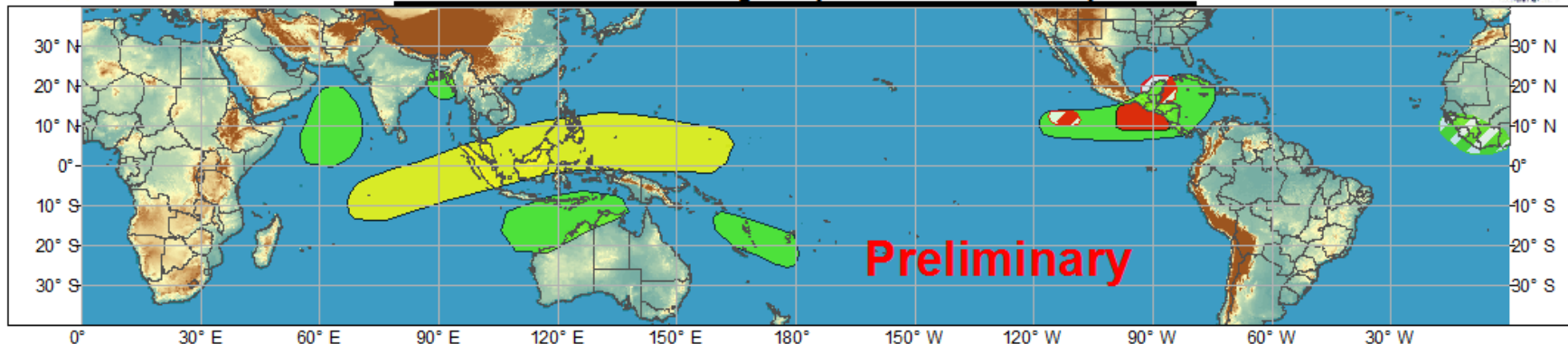
D+11 500 MB ANOMALIES FROM 00Z ECMM
 CPC MAP MADE MAY 28 2013 1037 UTC CNTD JUN 08 2013



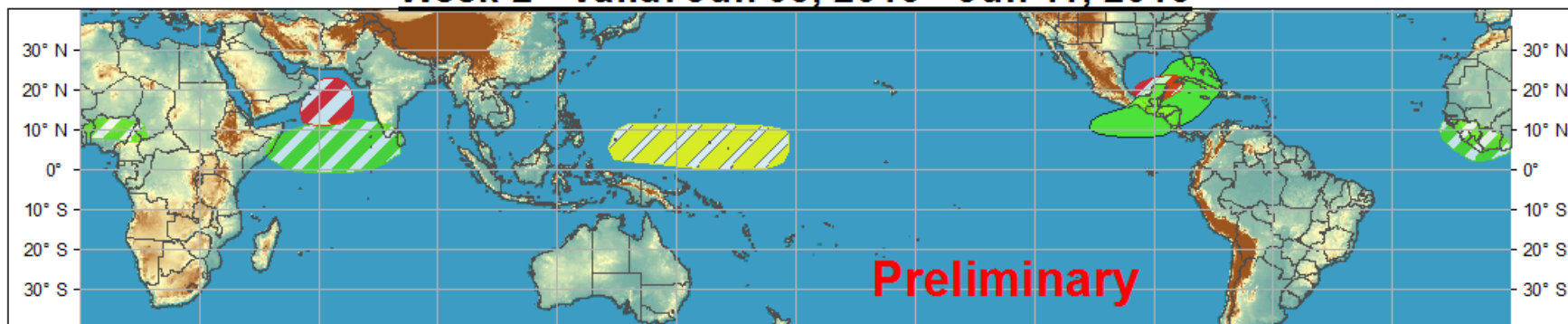
Global Tropics Hazards and Benefits Outlook - Climate Prediction Center



Week 1 - Valid: May 29, 2013 - Jun 04, 2013



Week 2 - Valid: Jun 05, 2013 - Jun 11, 2013



Produced: 05/28/2013

Forecaster: Baxter

	Confidence	
	High	Moderate
Tropical Cyclone Formation		
Above-average rainfall		
Below-average rainfall		
Above-normal temperatures		
Below-normal temperatures		

Development of a tropical cyclone that eventually reaches tropical storm/cyclone strength.

Weekly total rainfall in the upper third of the historical range.

Weekly total rainfall in the lower third of the historical range.

7-day mean temperatures in the upper third of the historical range.

7-day mean temperatures in the lower third of the historical range.

Product is updated once per week. The product targets broad scale conditions integrated over a 7-day period for US interests only. Consult your local responsible forecast agency.

