

Global Tropics Hazards And Benefits Outlook

August 20, 2013

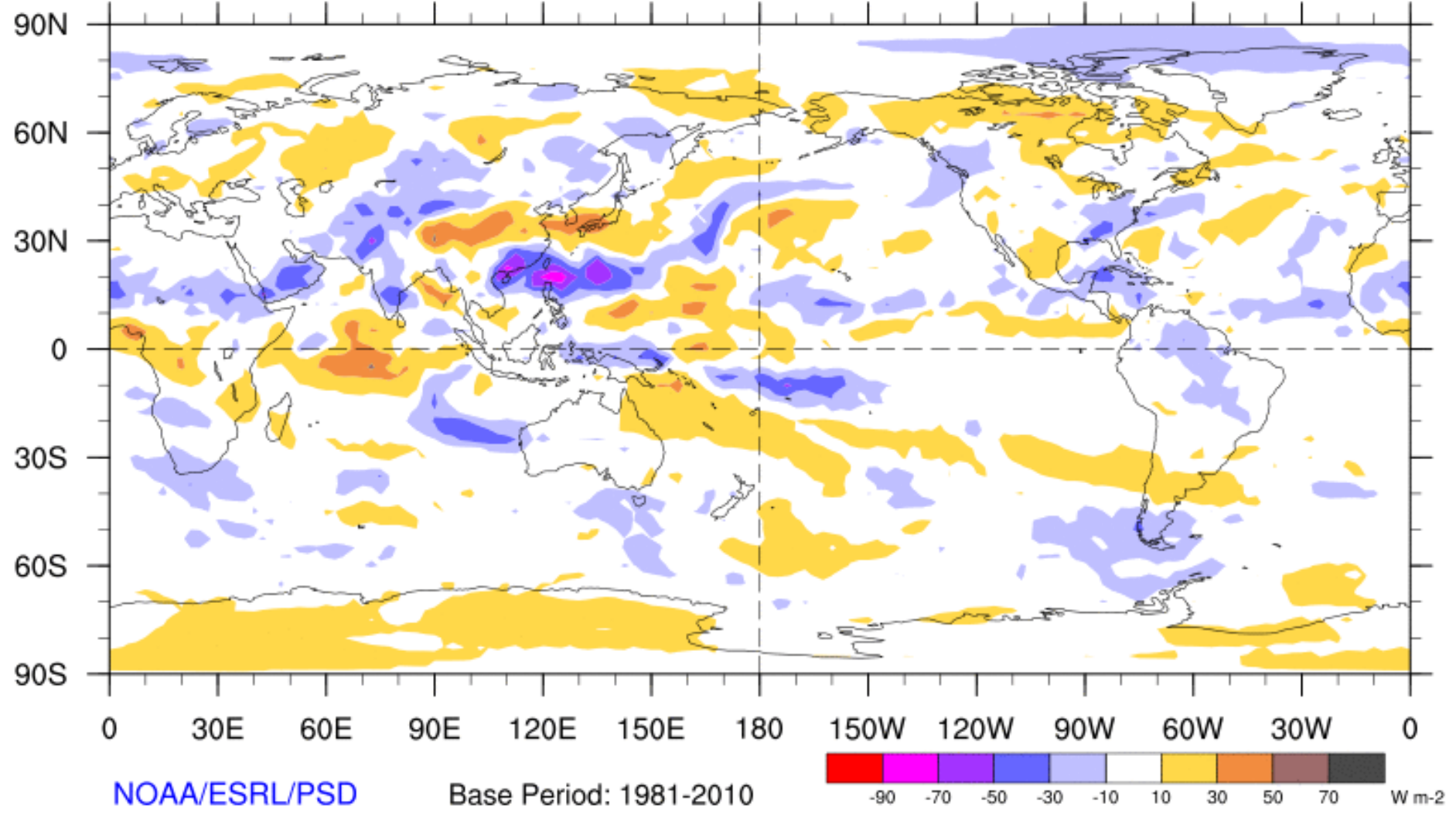
Brad Pugh

Outline

1. Review of Recent Conditions
2. Synopsis of Climate Modes
3. GTH Outlook and Forecast Discussion

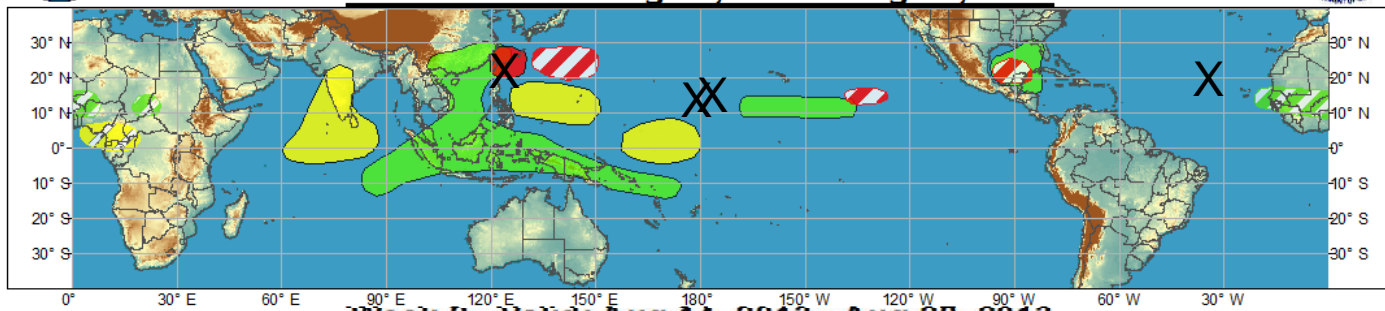
7-Day Average OLR Anomaly

2013/08/12 - 2013/08/18





Week 1 - Valid: Aug 14, 2013 - Aug 20, 2013

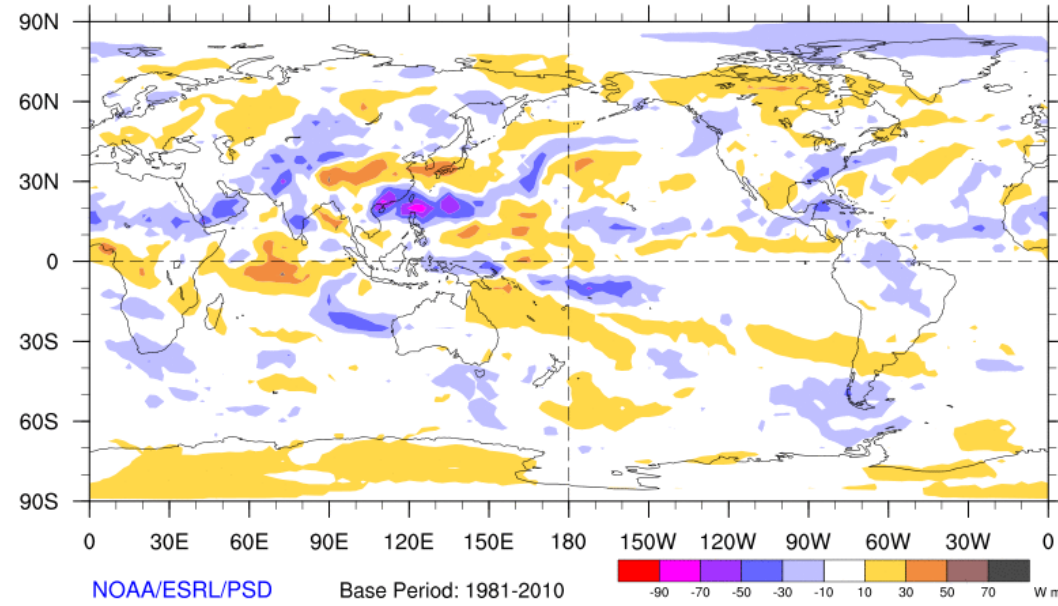


Week 2 - Valid: Aug 14, 2013 - Aug 20, 2013



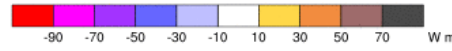
7-Day Average OLR Anomaly

2013/08/12 - 2013/08/18



NOAA/ESRL/PSD

Base Period: 1981-2010



Outlook Review

Cool shading
More clouds/rain

Warm shading
Less clouds/rain

Synopsis of Climate Modes

ENSO:

- ENSO-neutral conditions are favored to continue through late boreal autumn 2013.

MJO and other subseasonal tropical variability:

- The MJO has remained weak over the past 2 to 3 weeks.
- Model MJO index forecasts indicate an organizing MJO signal during Week-1 with an eastward propagation across the western Hemisphere during Week-2.

Tropics:

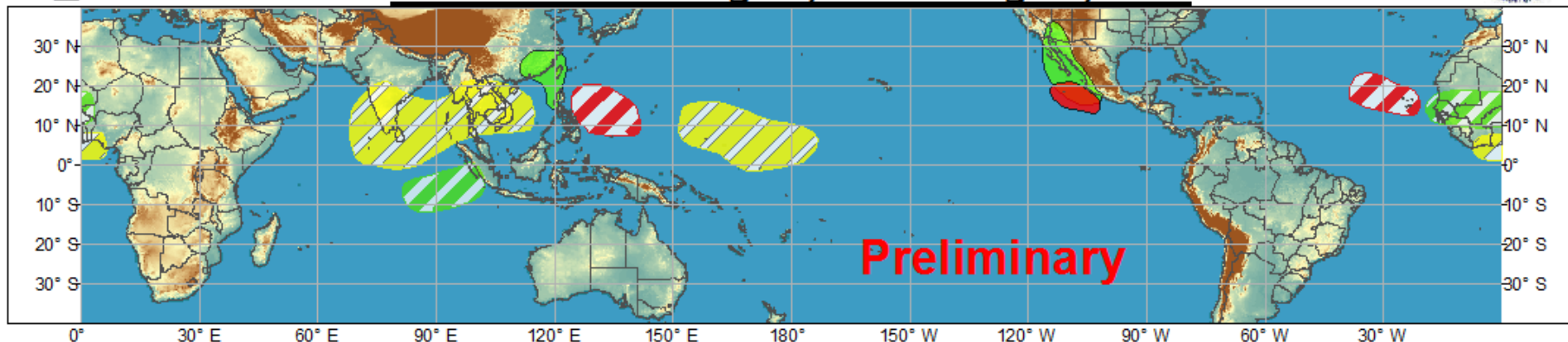
- Elevated odds for TC development in the western North Pacific during Week-1, east of the Philippines.
- High chances for TC development in East Pacific with a likely track near the Baja and gulf surge north into the desert Southwest during Week-1.
- Elevated odds for TC development in East Pacific for Week-2.
- Increasing odds for TC development across the main development region of Atlantic during Week-2.



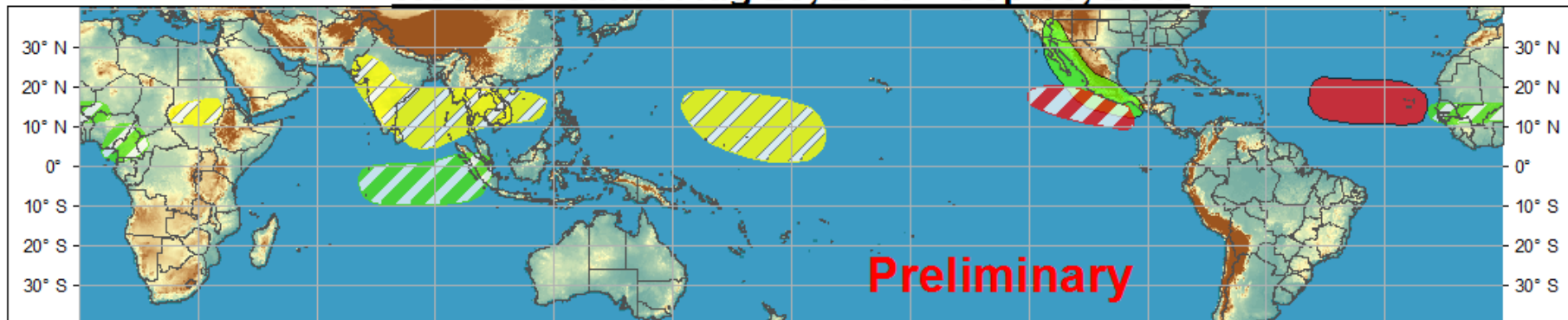
Global Tropics Hazards and Benefits Outlook - Climate Prediction Center













Week 1 - Valid: Aug 21, 2013 - Aug 27, 2013



Week 2 - Valid: Aug 28, 2013 - Sep 03, 2013



Confidence
High Moderate

- | | | |
|-----------------------------------|---|--|
| Tropical Cyclone Formation |   | Development of a tropical cyclone that eventually reaches tropical storm/cyclone strength. |
| Above-average rainfall |   | Weekly total rainfall in the upper third of the historical range. |
| Below-average rainfall |   | Weekly total rainfall in the lower third of the historical range. |
| Above-normal temperatures |   | 7-day mean temperatures in the upper third of the historical range. |
| Below-normal temperatures |   | 7-day mean temperatures in the lower third of the historical range. |

Produced: 08/20/2013

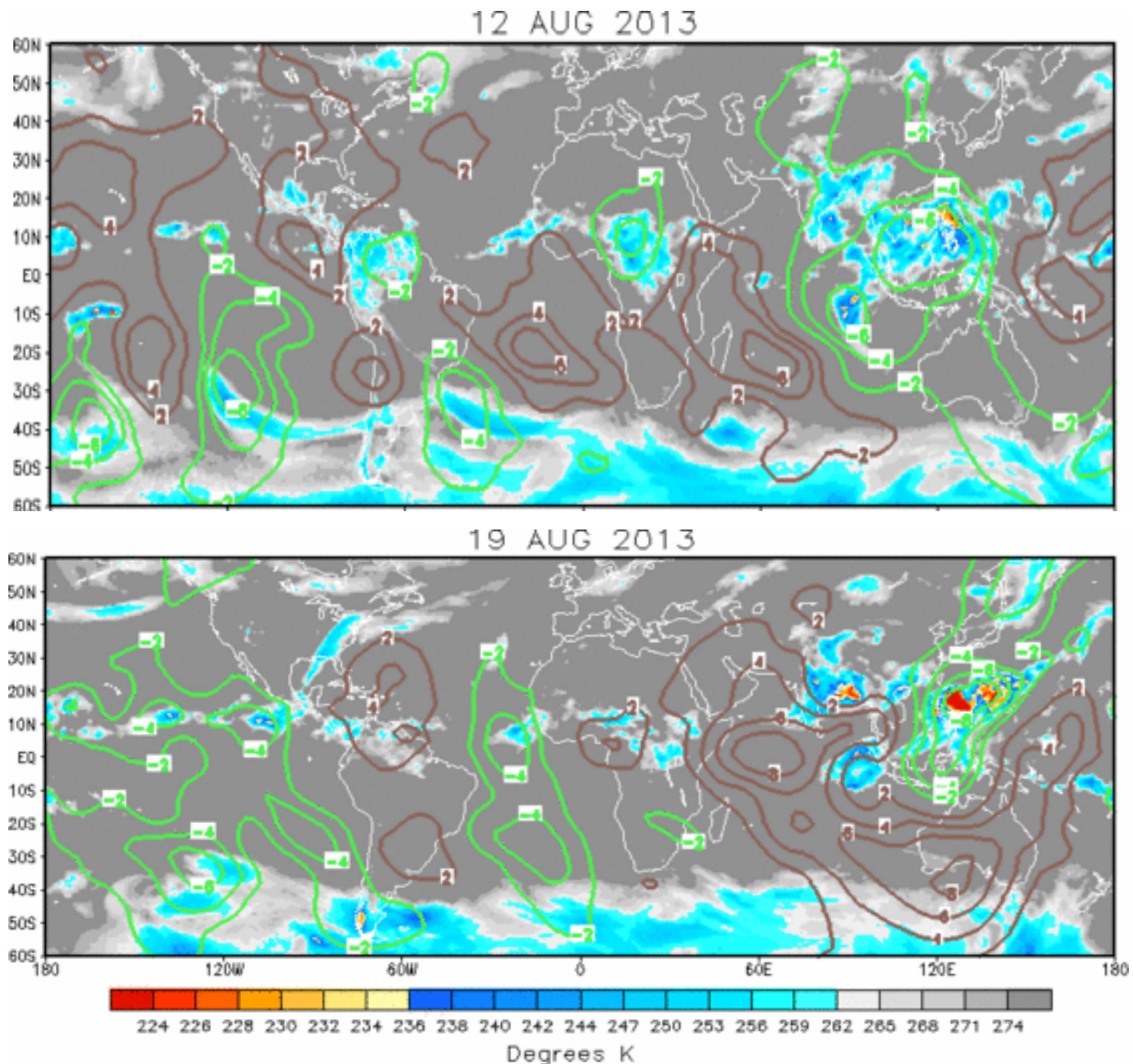
Forecaster: Pugh

Product is updated once per week. The product targets broad scale conditions integrated over a 7-day period for US interests only. Consult your local responsible forecast agency.



IR Satellite & 200-hpa Velocity Potential Anomalies

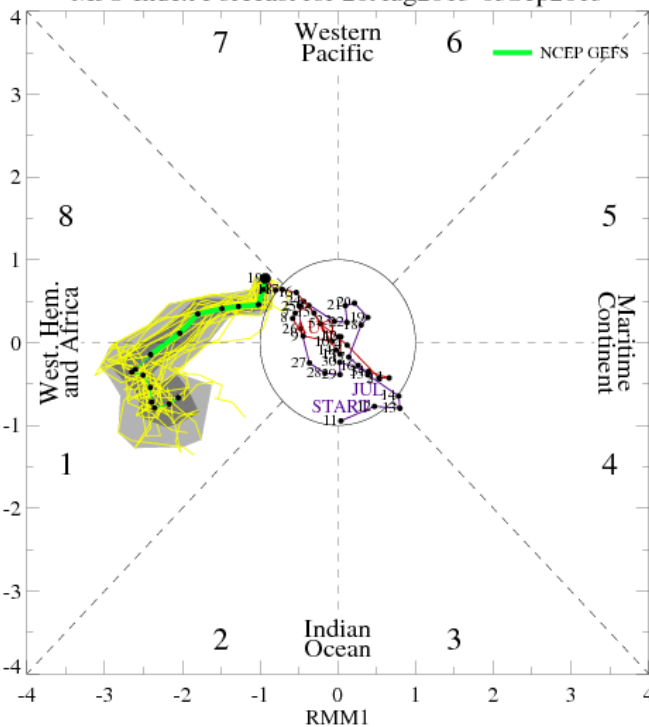
Green: Enhanced Divergence Brown: Enhanced Convergence



MJO Observation/Forecast

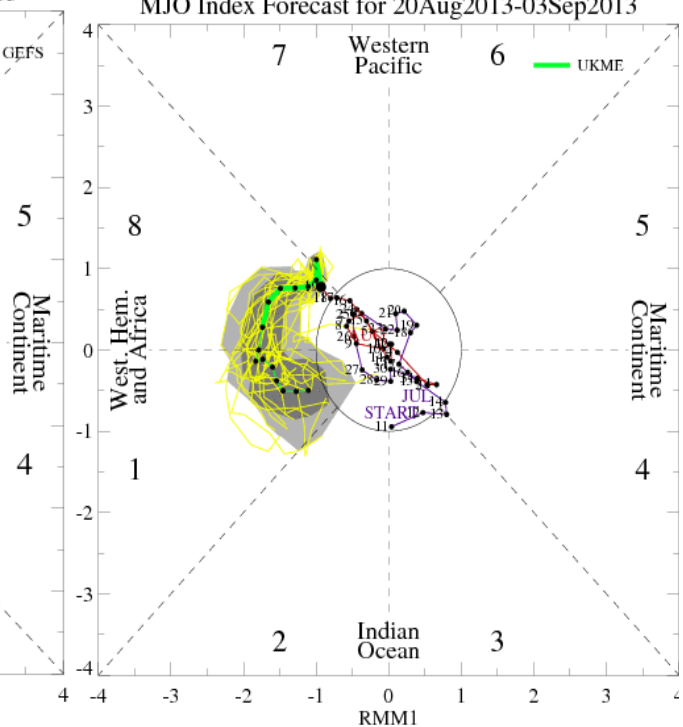
GFS

MJO Index Forecast for 20Aug2013-03Sep2013



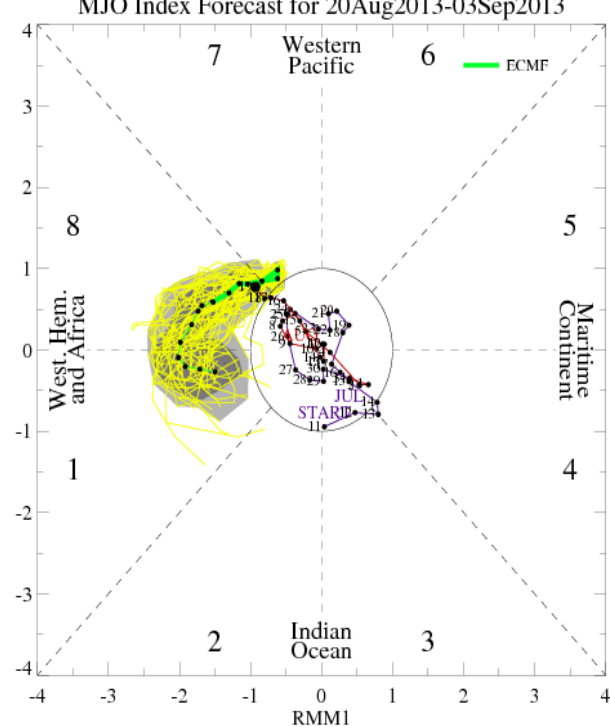
UKMET

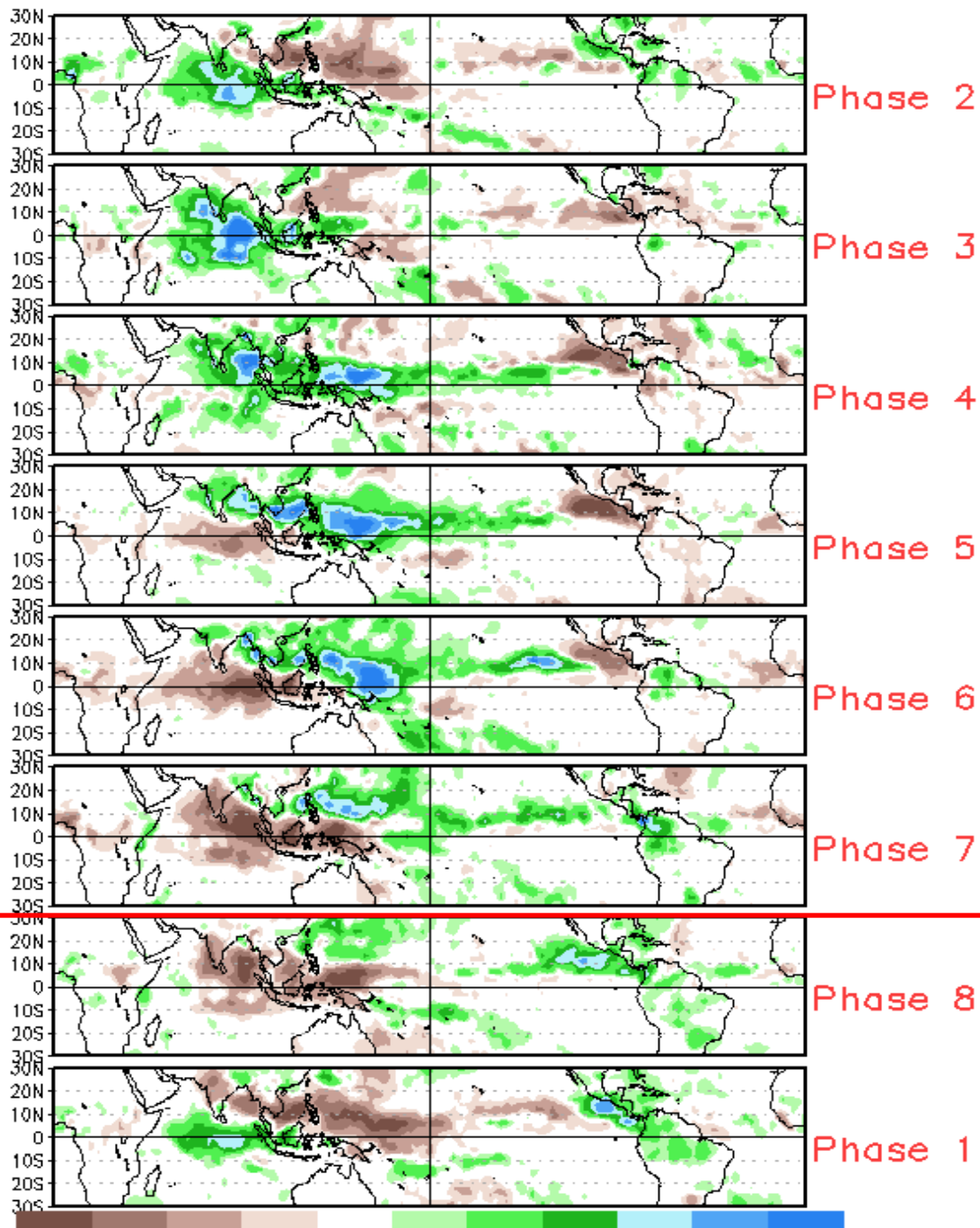
MJO Index Forecast for 20Aug2013-03Sep2013



ECMWF

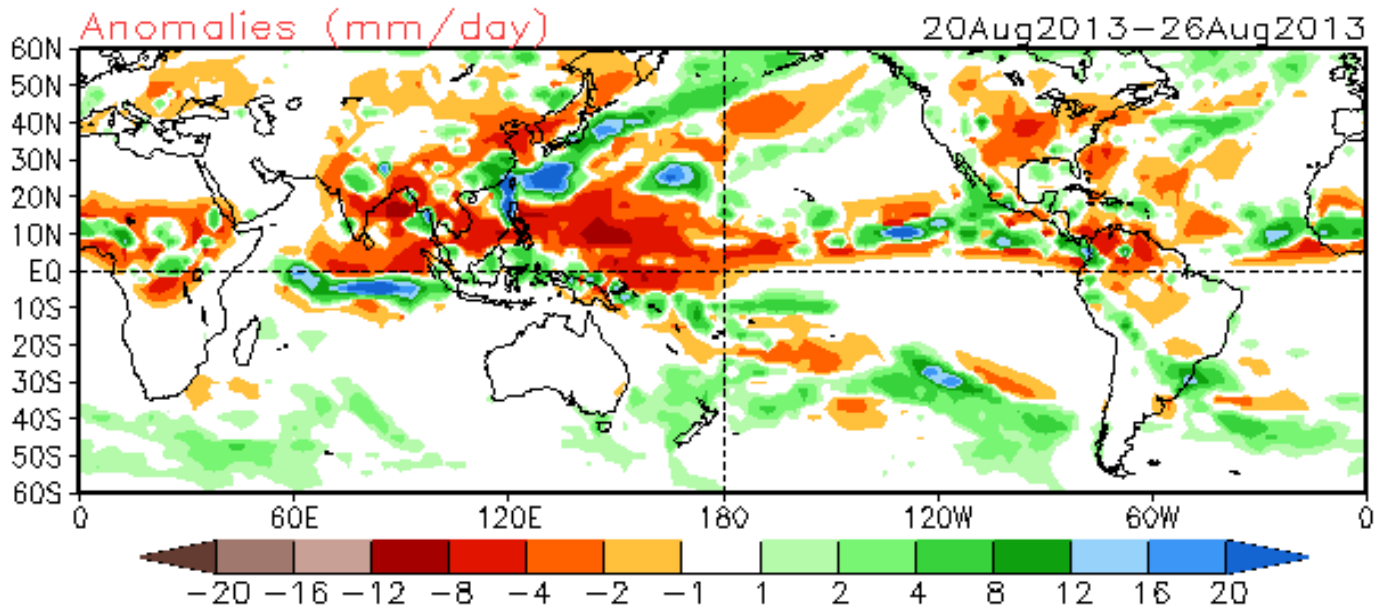
MJO Index Forecast for 20Aug2013-03Sep2013



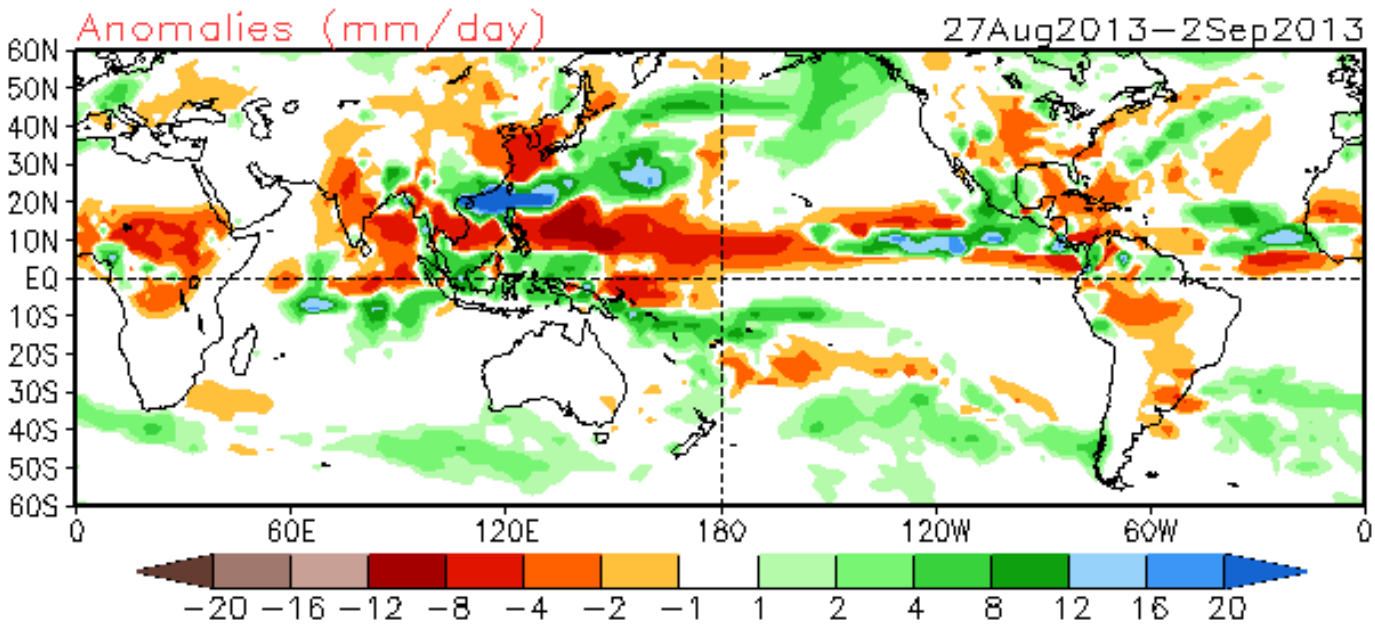


GFS Forecast

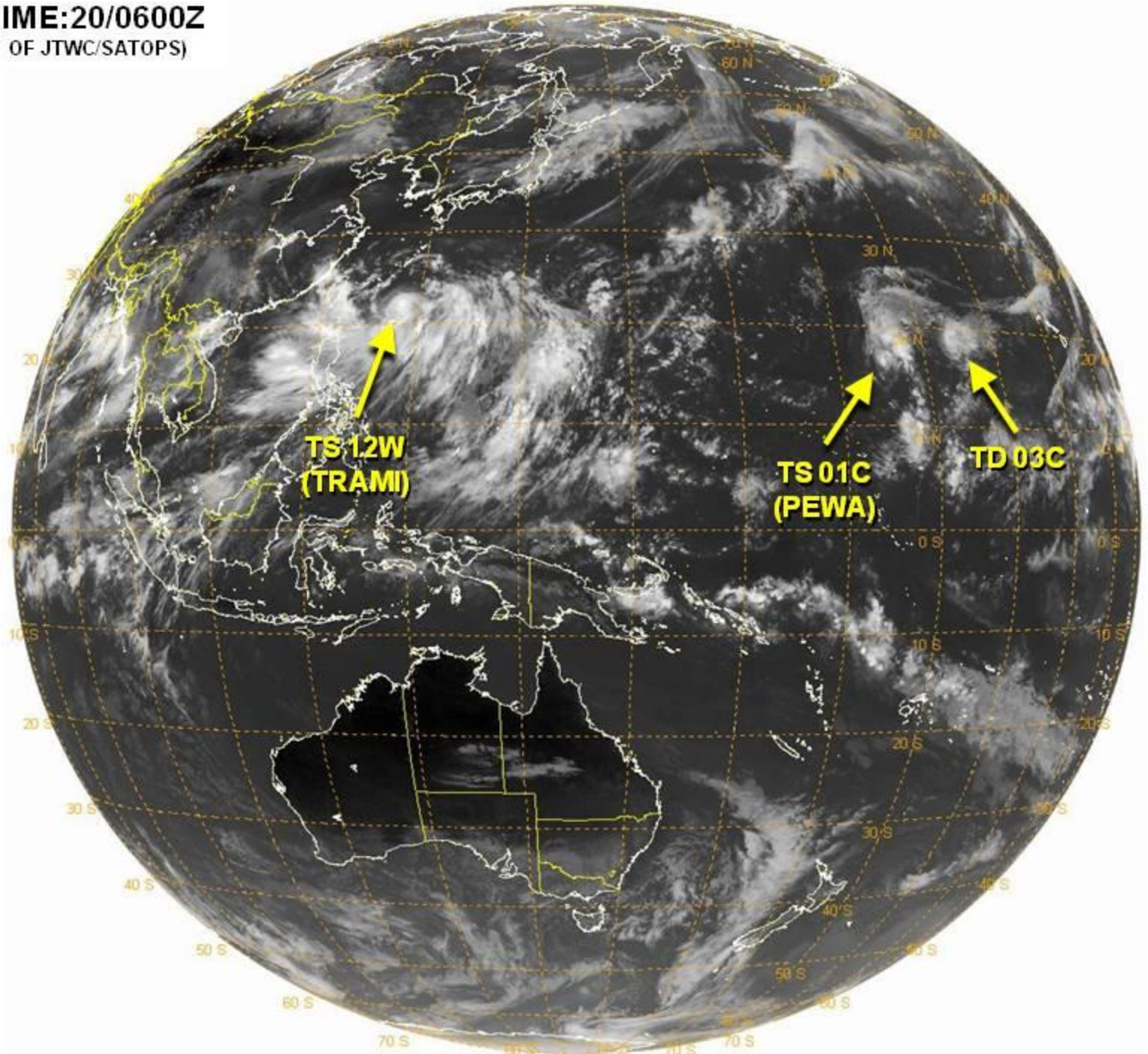
Week-1



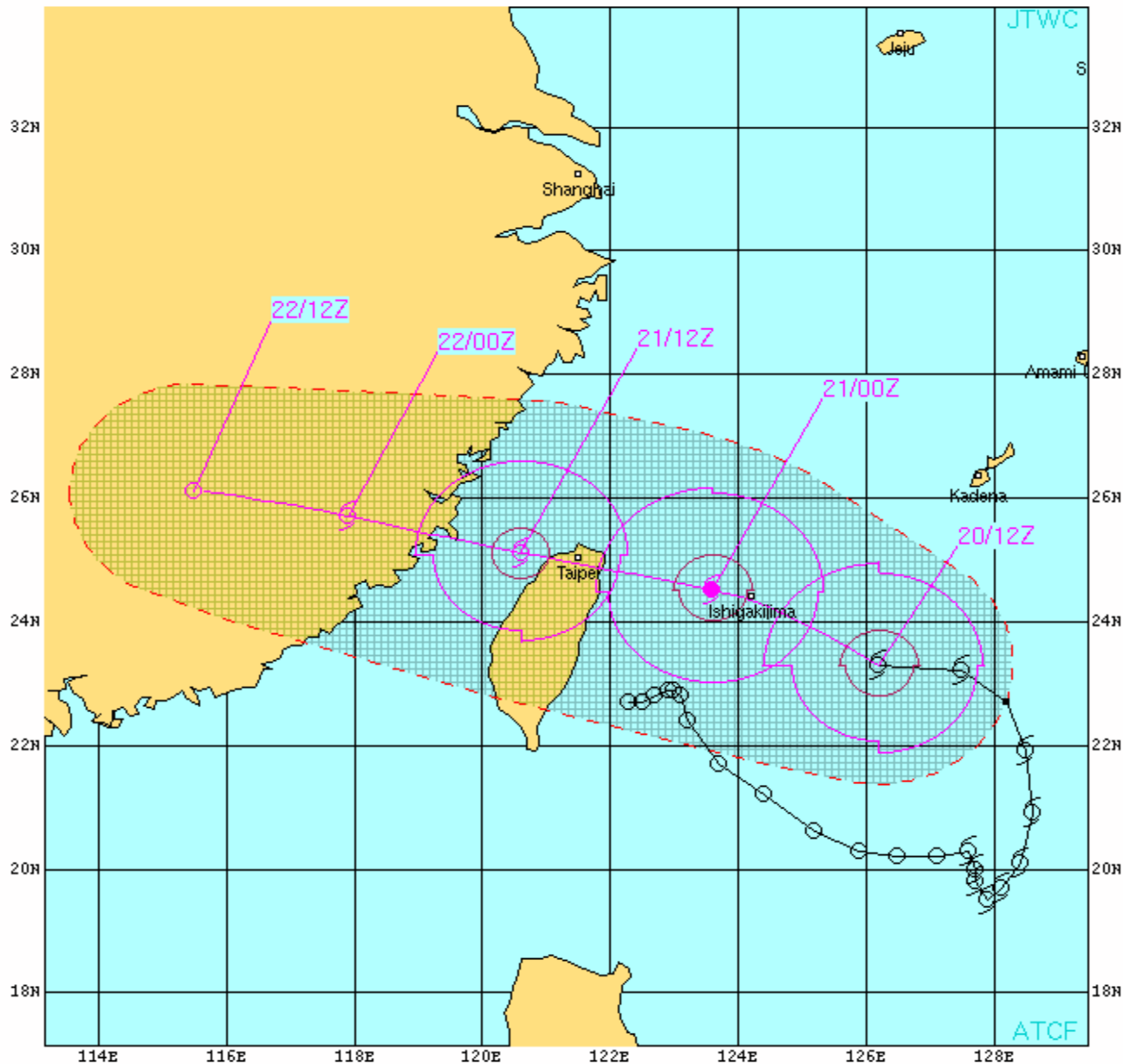
Week-2



VALID TIME:20/0600Z
(PRODUCT OF JTWC/SATOPS)



Joint Typhoon Warning Center



TROPICAL STORM 12W (TRAMI) WARNING #15
 WTPN32 PGTW 201500
 201200Z POSIT: NEAR 23.3N 126.2E
 MOVING 275 DEGREES TRUE AT 12 KNOTS
 MAXIMUM SIGNIFICANT WAVE HEIGHT: 26 FEET
 20/12Z, WINDS 060 KTS, GUSTS TO 075 KTS
 21/00Z, WINDS 065 KTS, GUSTS TO 080 KTS
 21/12Z, WINDS 055 KTS, GUSTS TO 070 KTS
 22/00Z, WINDS 040 KTS, GUSTS TO 050 KTS
 22/12Z, WINDS 020 KTS, GUSTS TO 030 KTS

CPA TO:	NM	DTG
KADENA_AB	210	20/13Z
TAIPEI	11	21/08Z
HONG_KONG	238	22/12Z

BEARING AND DISTANCE	DIR	DIST (NM)	TAU (HRS)
HONG_KONG	063	390	24
KADENA_AB	253	398	24
TAIPEI	270	49	24

○ LESS THAN 34 KNOTS
 ⊗ 34-63 KNOTS
 ⊕ MORE THAN 63 KNOTS
 PAST 6 HOURLY CYCLONE POSITS IN BLACK
 FORECAST CYCLONE POSITS IN COLOR



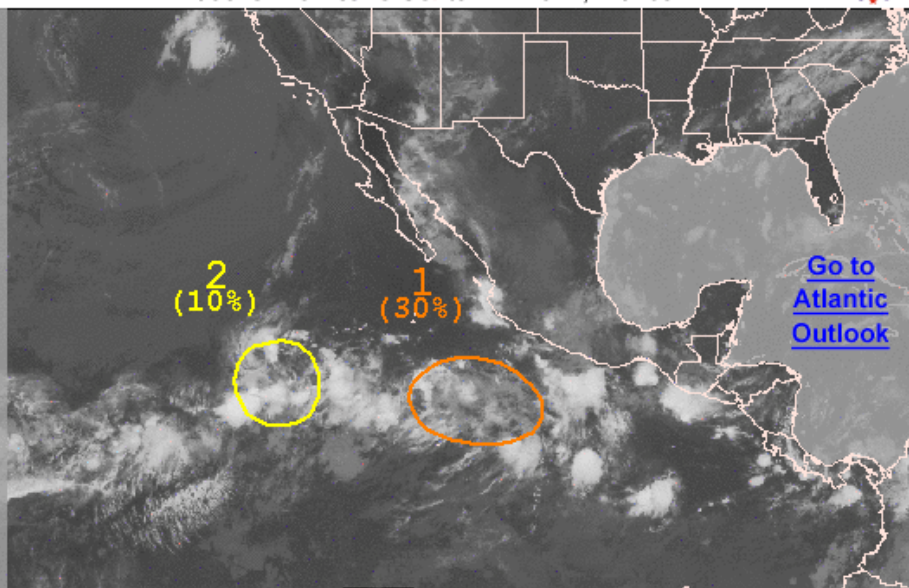


Graphical Tropical Weather Outlook

National Hurricane Center Miami, Florida



[Go to Central Pacific Hurricane Center](#)



500 AM PDT TUE AUG 20 2013

Satellite Image: 0400 AM PDT

Outlined areas denote current position of systems discussed in the Tropical Weather Outlook. Color indicates probability of tropical cyclone formation within 48 hours.

Low <30%

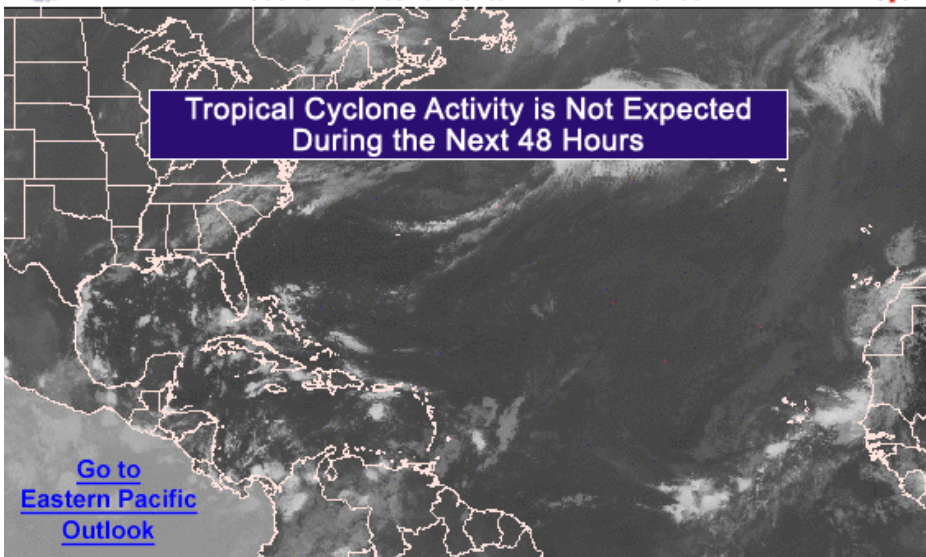
Medium 30-50%

High >50%



Graphical Tropical Weather Outlook

National Hurricane Center Miami, Florida



800 AM EDT TUE AUG 20 2013

Satellite Image: 0700 AM EDT

Outlined areas denote current position of systems discussed in the Tropical Weather Outlook. Color indicates probability of tropical cyclone formation within 48 hours.

Low <30%

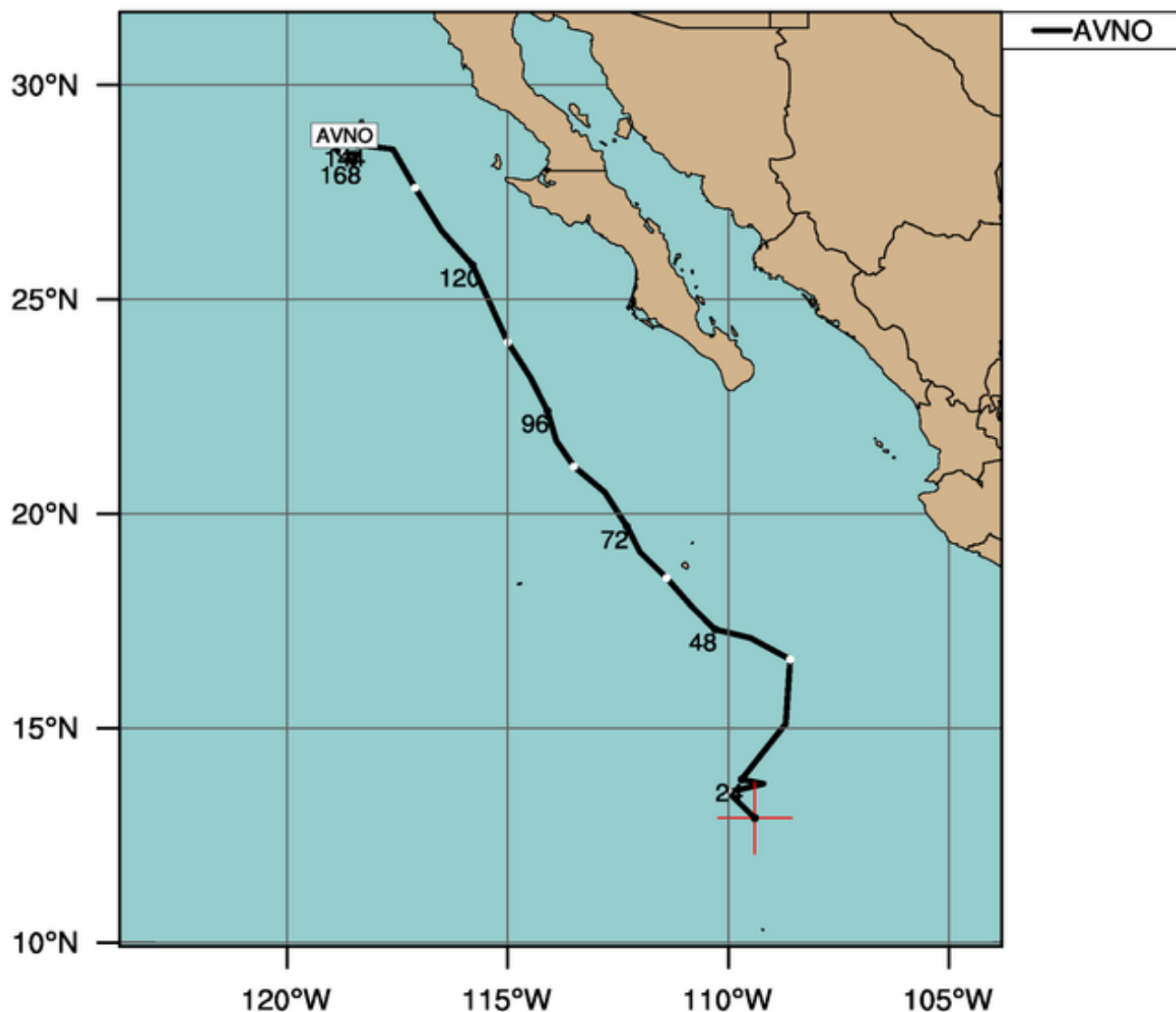
Medium 30-50%

High >50%

NCEP GFS Ensemble track guidance initialized at 0600 UTC, 20 August 2013

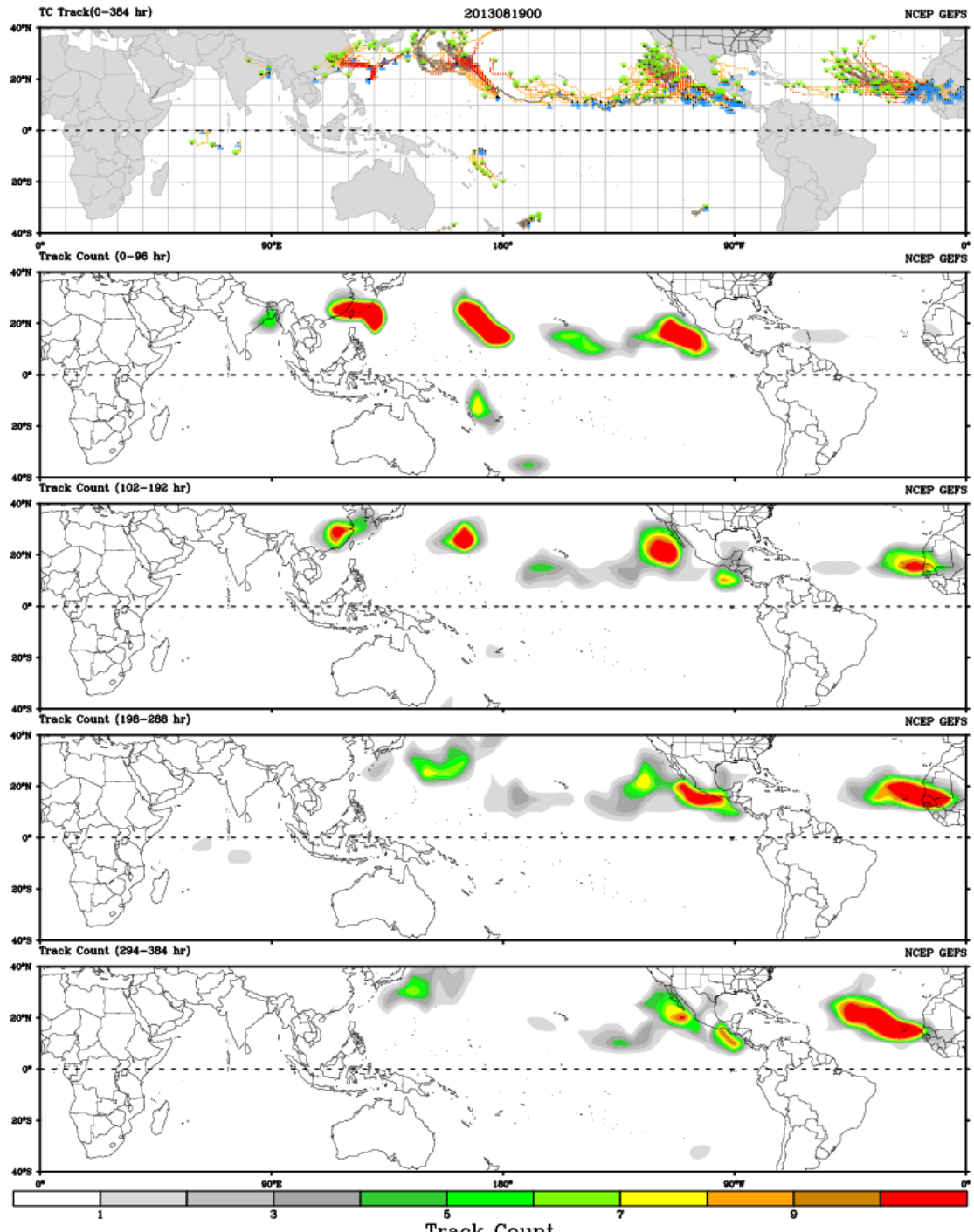
Current Intensity: -999 kt

Current Basin: Northeast Pacific



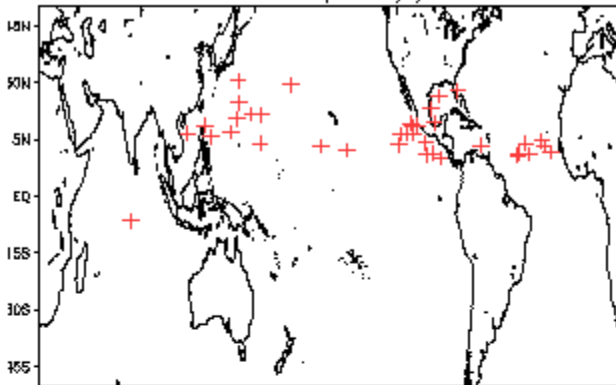
By using this plot, the user agrees to the UCAR Terms of Use which can be accessed at: <http://www2.ucar.edu/terms-of-use>

Plot generated at 1349 UTC 20 August 2013

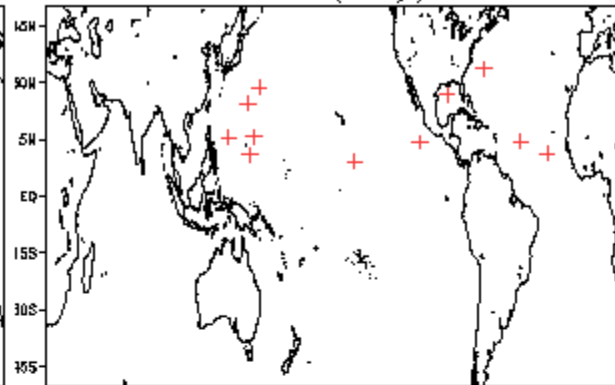


August Tropical Storm Formation by MJO phase

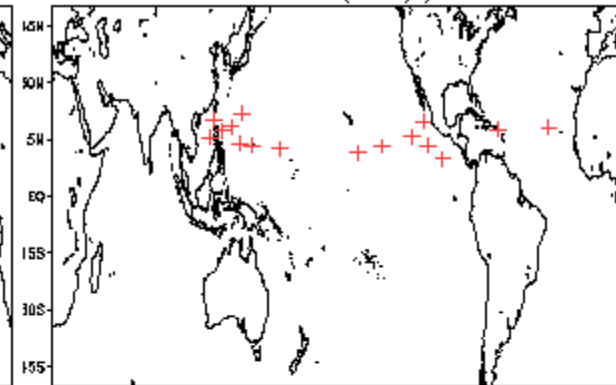
Phase 1 (101 days) 38 storms



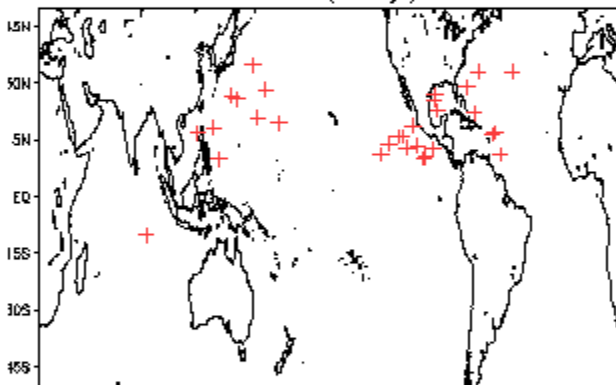
Phase 4 (40 days) 12 storms



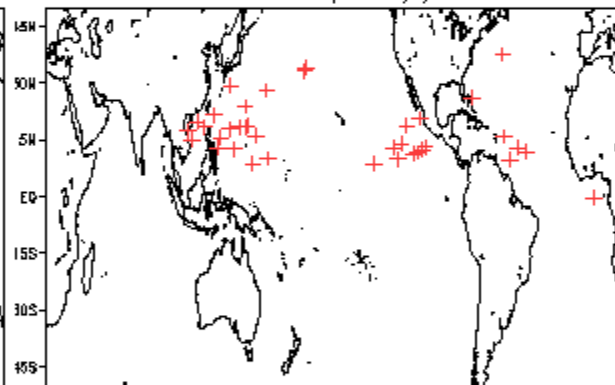
Phase 7 (43 days) 17 storms



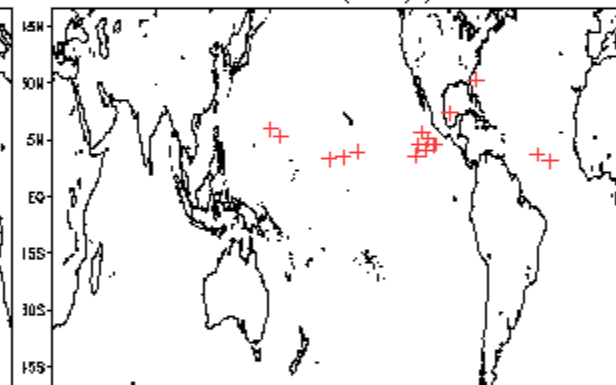
Phase 2 (79 days) 31 storms



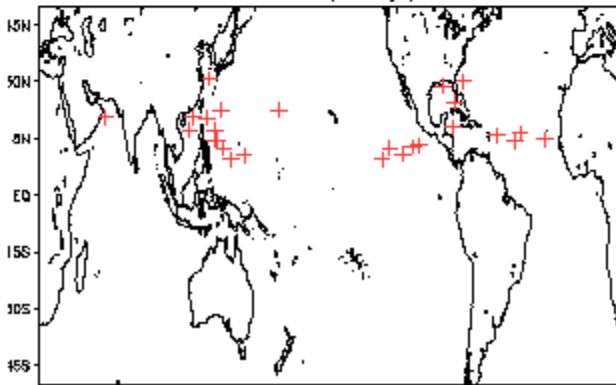
Phase 5 (117 days) 40 storms



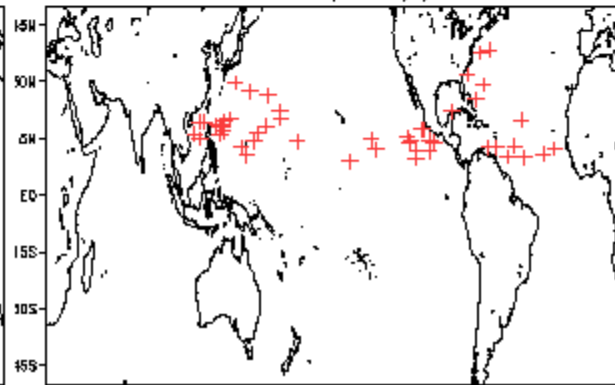
Phase 8 (25 days) 17 storms



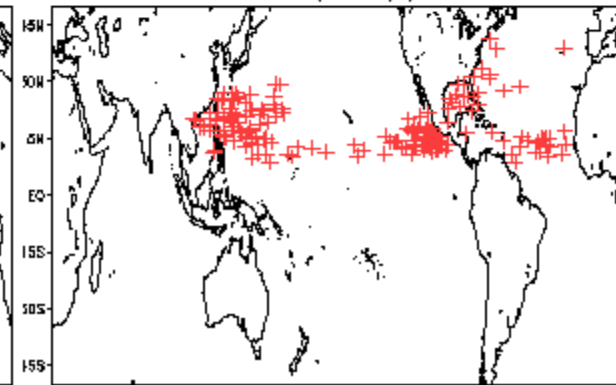
Phase 3 (51 days) 27 storms

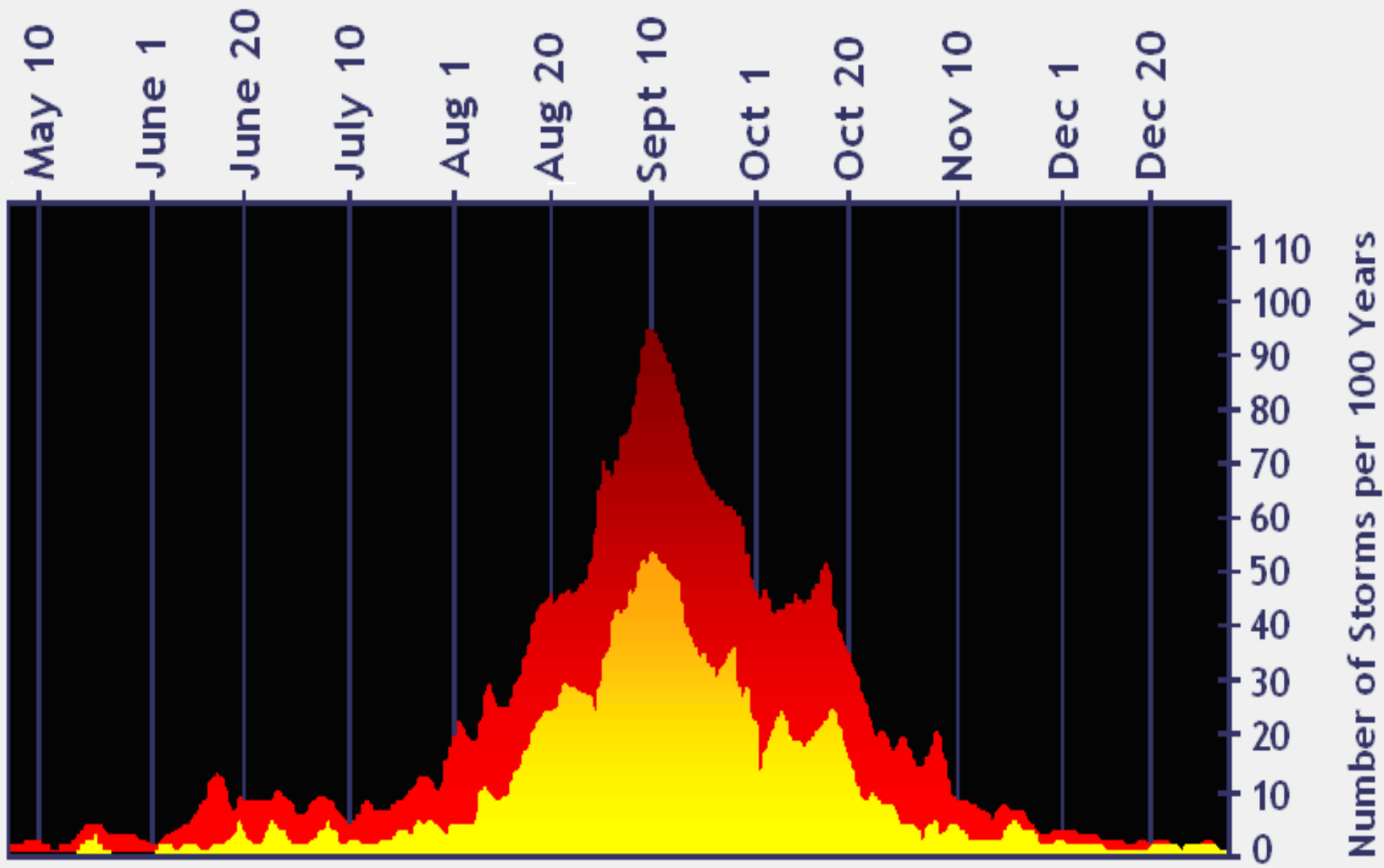


Phase 6 (101 days) 50 storms

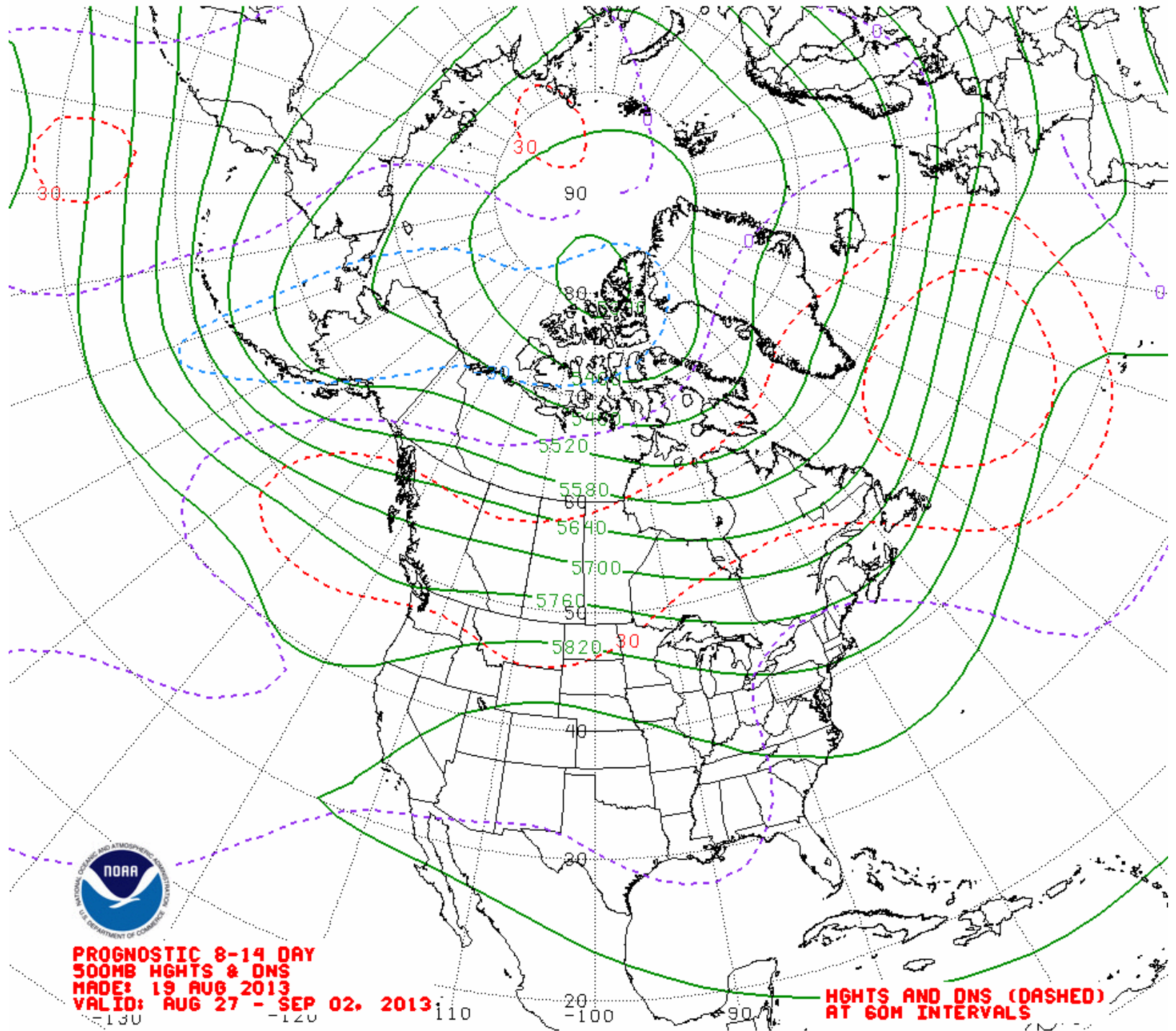


Null (466 days) 189 storms



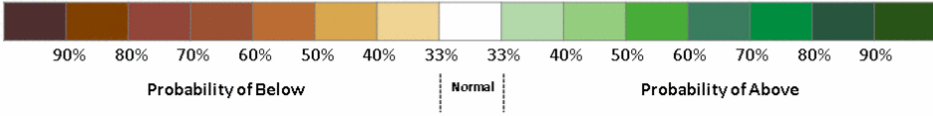
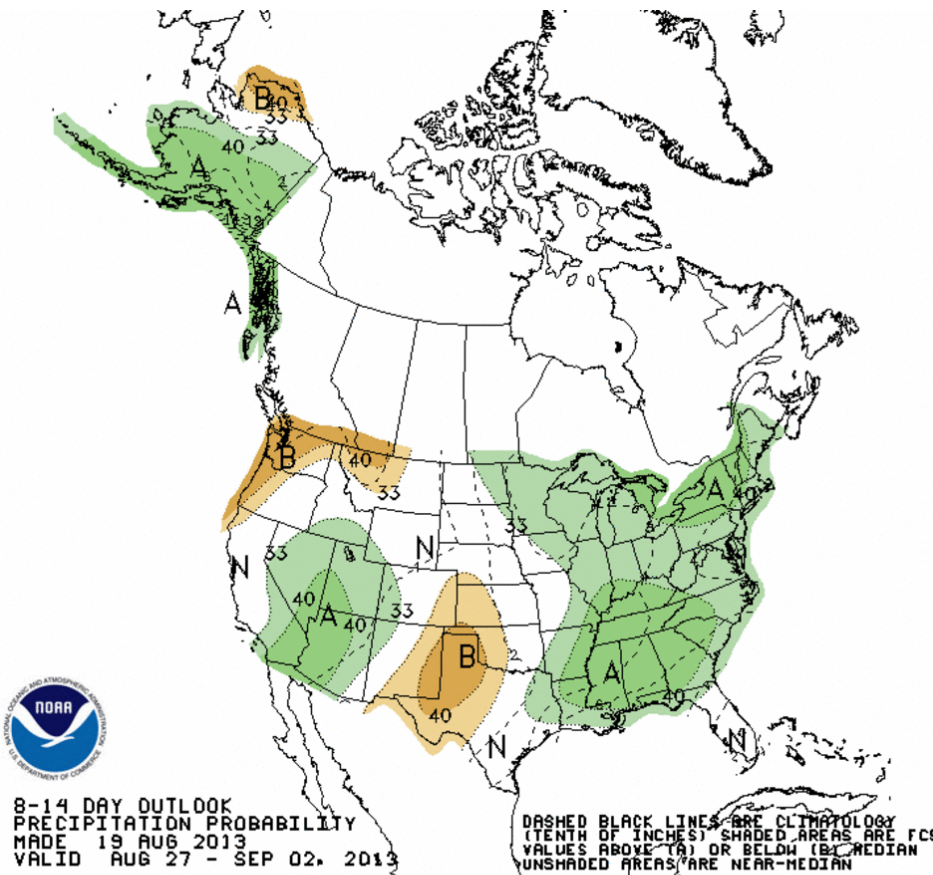
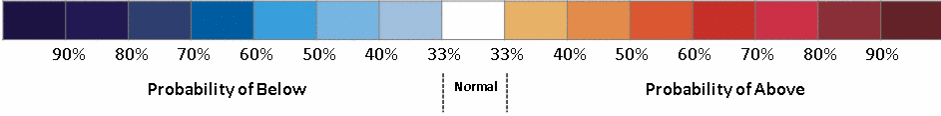
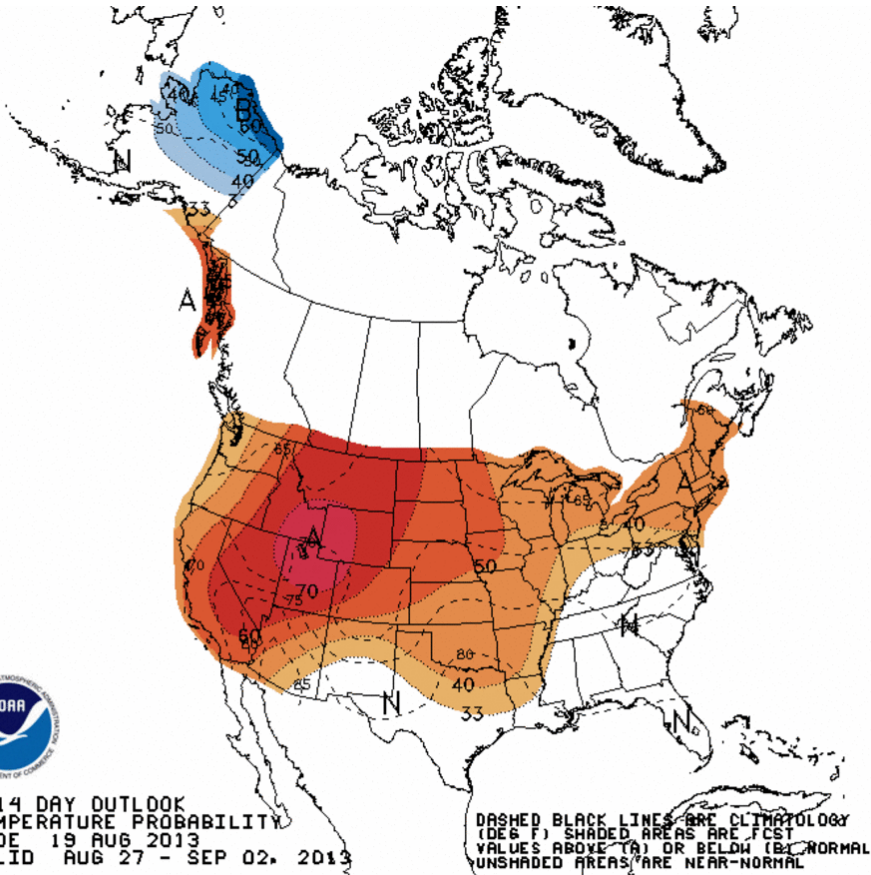


■ Hurricanes and Tropical Storms
■ Hurricanes



**PROGNOSTIC 8-14 DAY
500MB HGHTS & DNS
MADE: 19 AUG 2013
VALID: AUG 27 - SEP 02, 2013**

**HGHTS AND DNS (DASHED)
AT 60M INTERVALS**

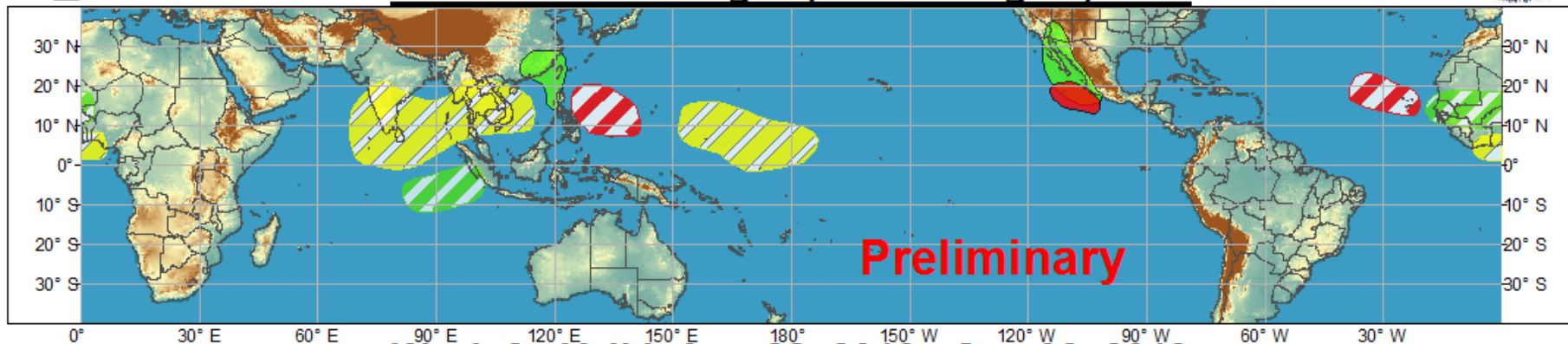




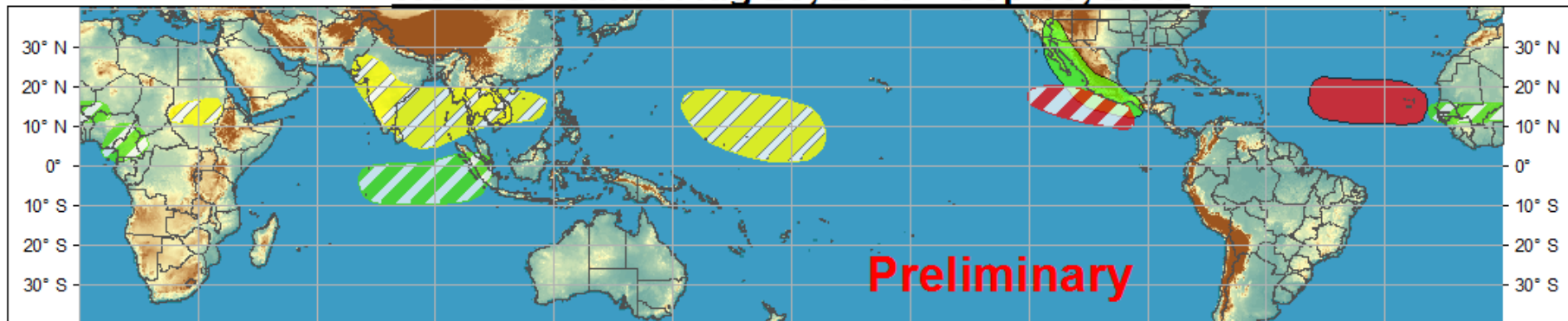
Global Tropics Hazards and Benefits Outlook - Climate Prediction Center













Week 1 - Valid: Aug 21, 2013 - Aug 27, 2013



Week 2 - Valid: Aug 28, 2013 - Sep 03, 2013



Confidence
High Moderate

- | | | |
|-----------------------------------|---|--|
| Tropical Cyclone Formation |   | Development of a tropical cyclone that eventually reaches tropical storm/cyclone strength. |
| Above-average rainfall |   | Weekly total rainfall in the upper third of the historical range. |
| Below-average rainfall |   | Weekly total rainfall in the lower third of the historical range. |
| Above-normal temperatures |   | 7-day mean temperatures in the upper third of the historical range. |
| Below-normal temperatures |   | 7-day mean temperatures in the lower third of the historical range. |

Produced: 08/20/2013

Forecaster: Pugh

Product is updated once per week. The product targets broad scale conditions integrated over a 7-day period for US interests only. Consult your local responsible forecast agency.

