

# Global Tropics Hazards And Benefits Outlook

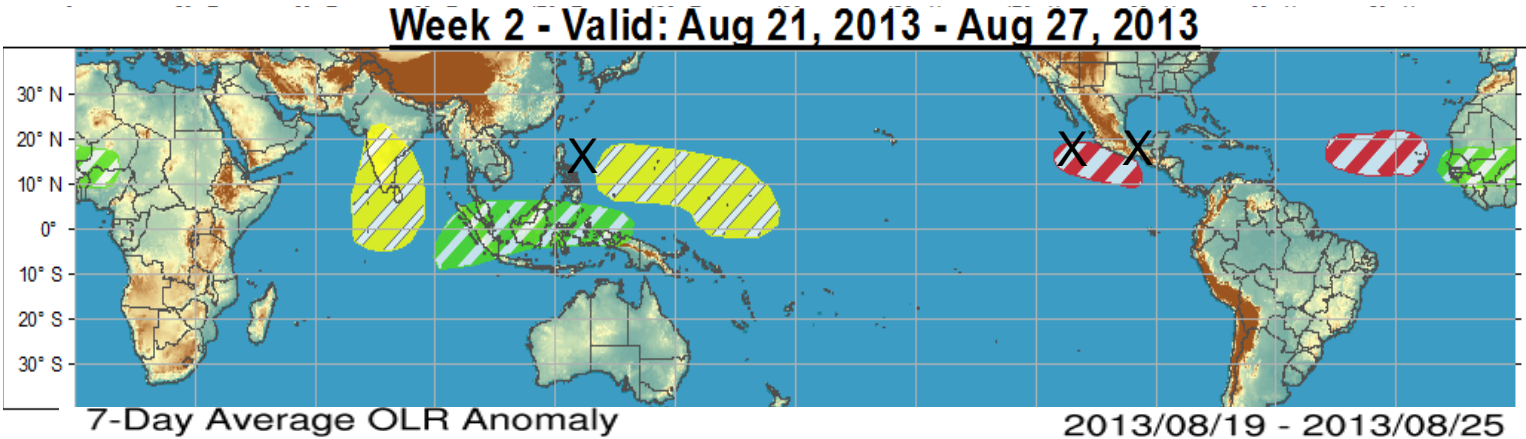
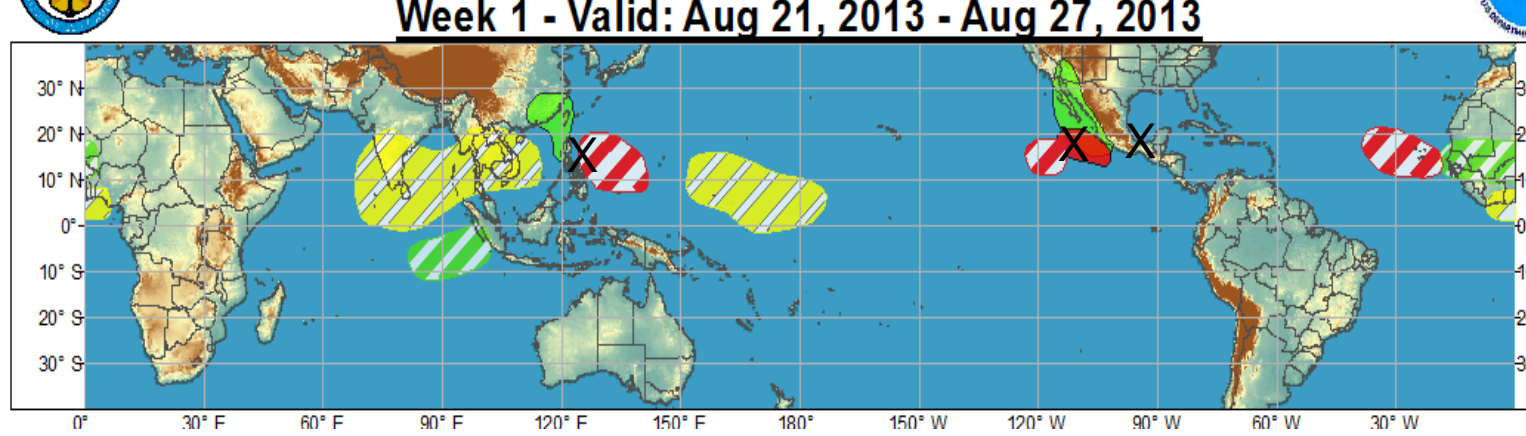
August 27, 2013

Matthew Rosencrans

## Outline

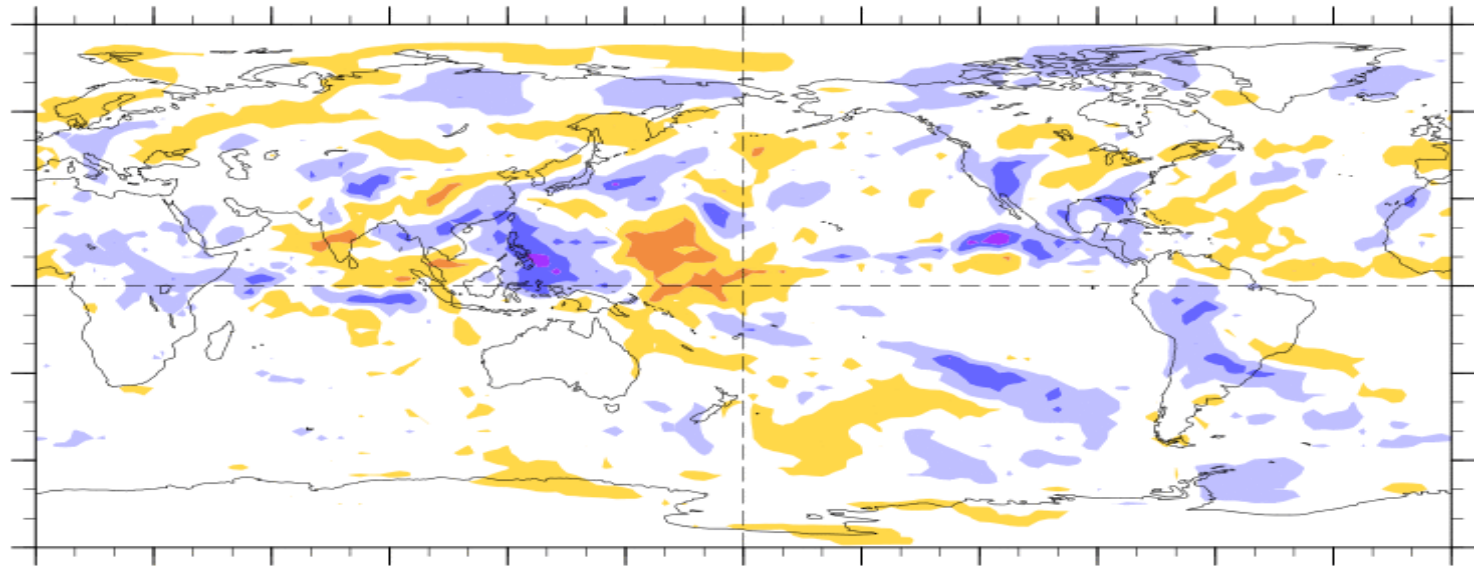
1. Review of Recent Conditions
2. Synopsis of Climate Modes
3. GTH Outlook and Forecast Discussion

# Outlook Review



Cool shading  
More clouds/rain

Warm shading  
Less clouds/rain



# Synopsis of Climate Modes

## ENSO:

- ENSO-neutral is favored into the Northern Hemisphere fall 2013..

## MJO and other subseasonal tropical variability:

- The MJO strengthened slightly during the past 4 days, active phase over the eastern Pacific.
- Model MJO index forecasts indicate a slight strengthening of the signal during the next week over the Americas, with propagation over Africa to the Indian Ocean during week-2.

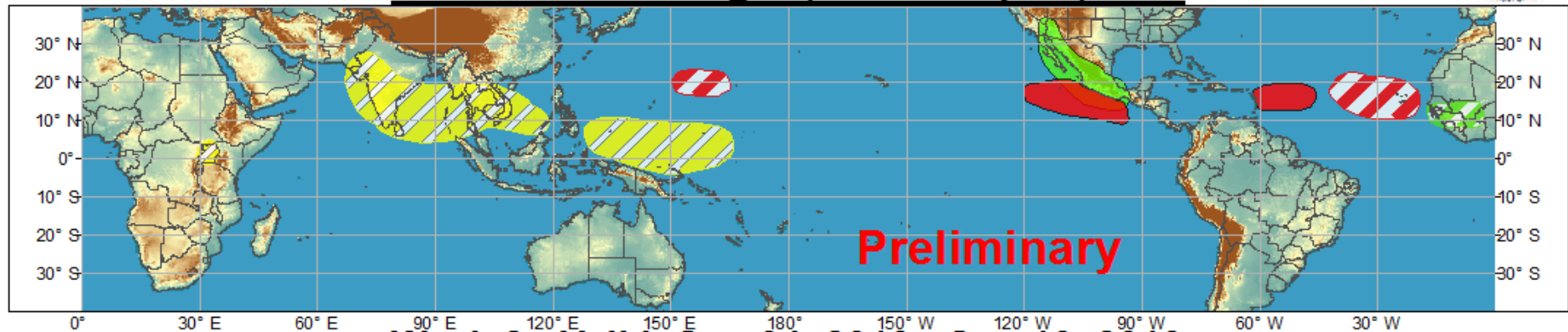
## Tropics:

- Elevated odds for TC development in the western North Pacific in Week-1, mainly north of 20N, east of 150E.
- Elevated odds for TC development in the East Pacific and Atlantic (MDR)
- Slight pause in Asian Monsoon (India +12.2% national average rainfall).

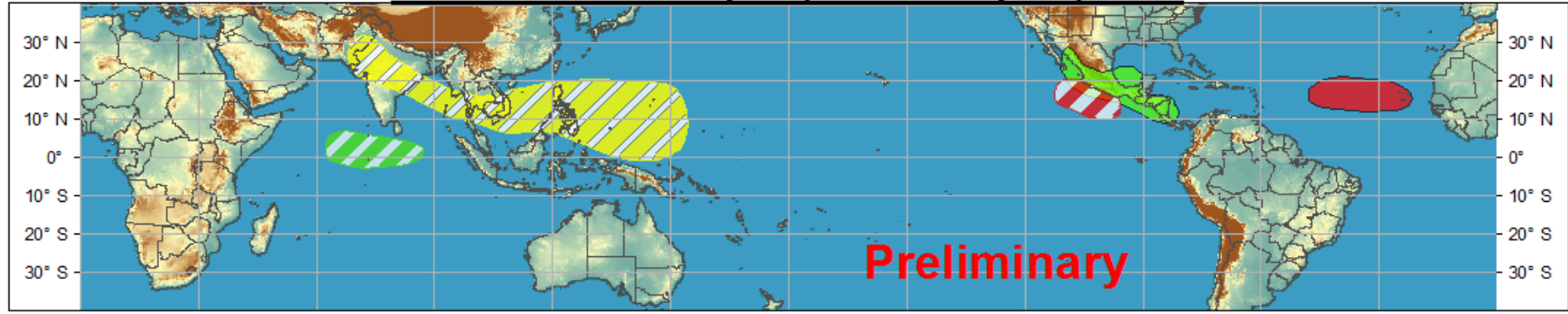


# Global Tropics Hazards and Benefits Outlook - Climate Prediction Center

## Week 1 - Valid: Aug 28, 2013 - Sep 03, 2013



## Week 2 - Valid: Sep 04, 2013 - Sep 10, 2013

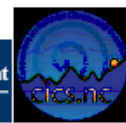


Produced: 08/27/2013

Forecaster: Rosencrans

- Confidence**  
High Moderate
- Tropical Cyclone Formation** Development of a tropical cyclone that eventually reaches tropical storm/cyclone strength.
  - Above-average rainfall** Weekly total rainfall in the upper third of the historical range.
  - Below-average rainfall** Weekly total rainfall in the lower third of the historical range.
  - Above-normal temperatures** 7-day mean temperatures in the upper third of the historical range.
  - Below-normal temperatures** 7-day mean temperatures in the lower third of the historical range.

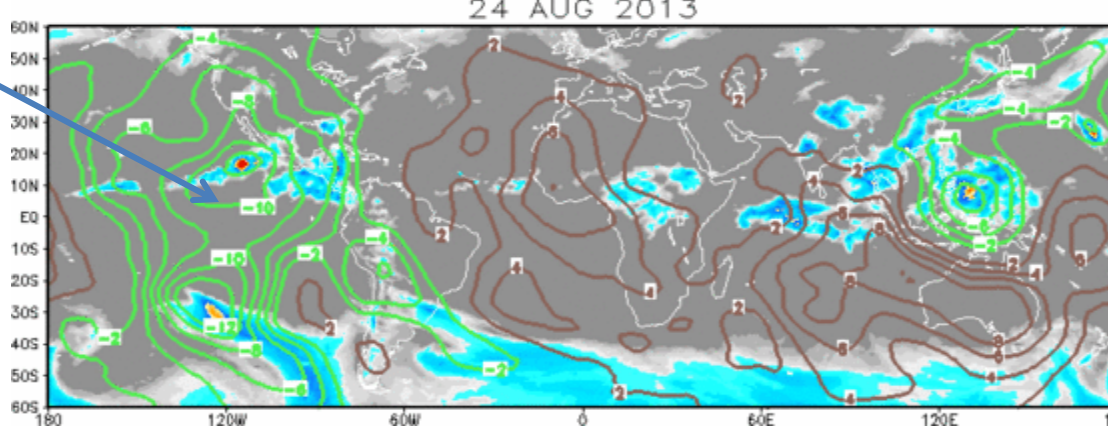
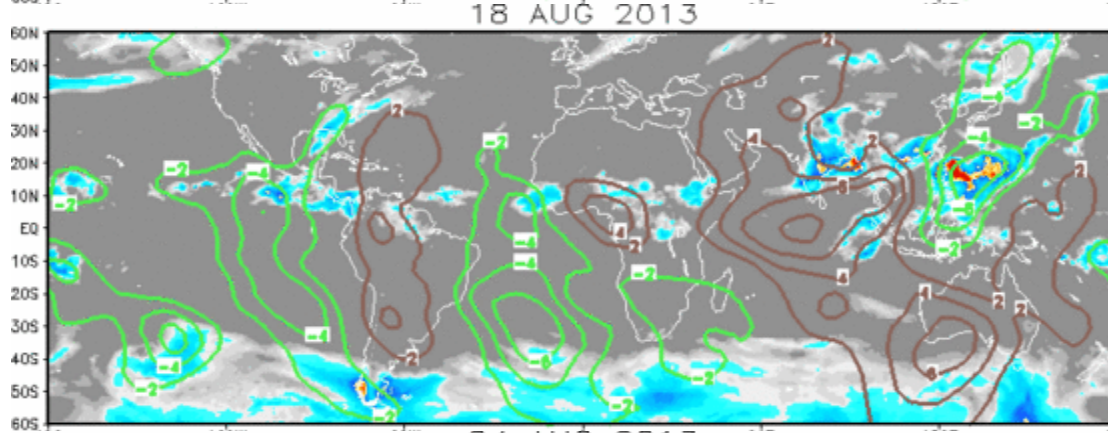
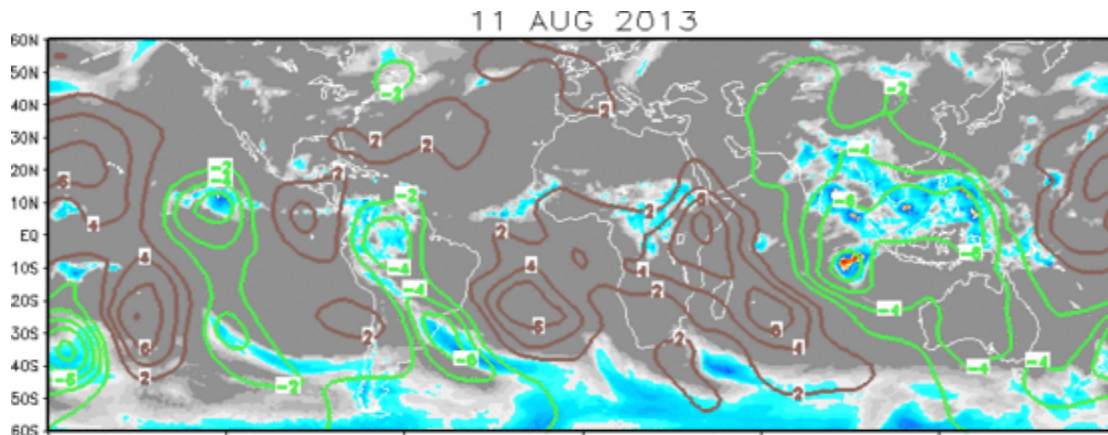
Product is updated once per week. The product targets broad scale conditions integrated over a 7-day period for US interests only. Consult your local responsible forecast agency.





# IR Satellite & 200-hpa Velocity Potential Anomalies

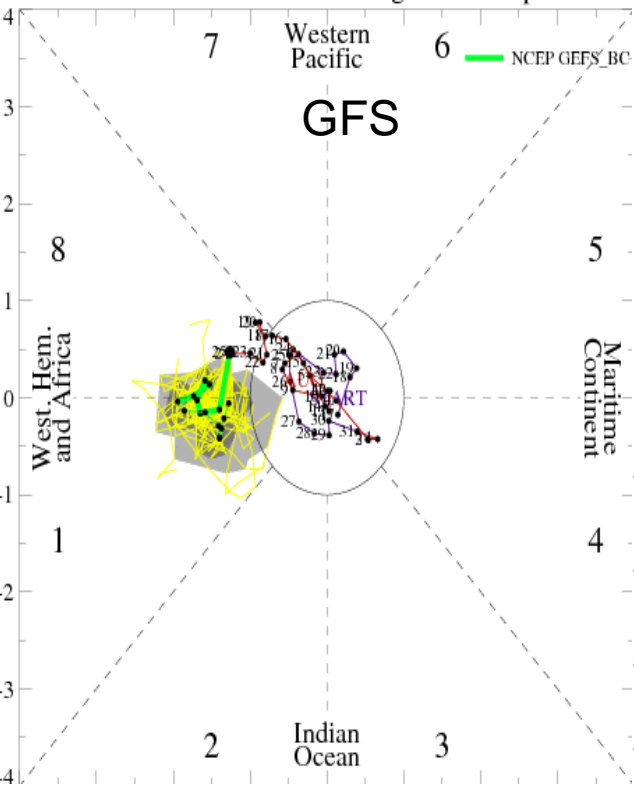
Green: Enhanced Divergence    Brown: Enhanced Convergence



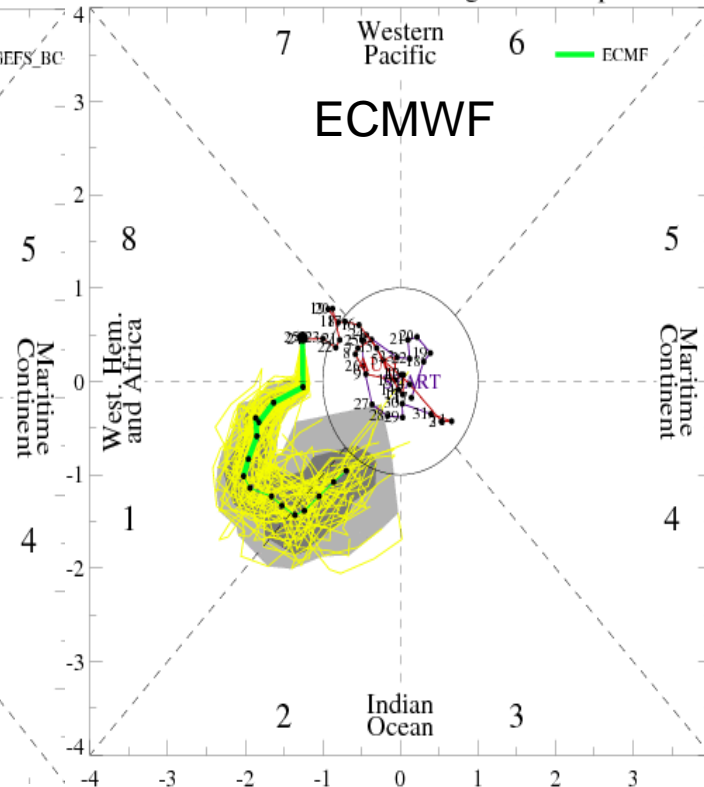
Convectively active region

# MJO Observation/Forecast

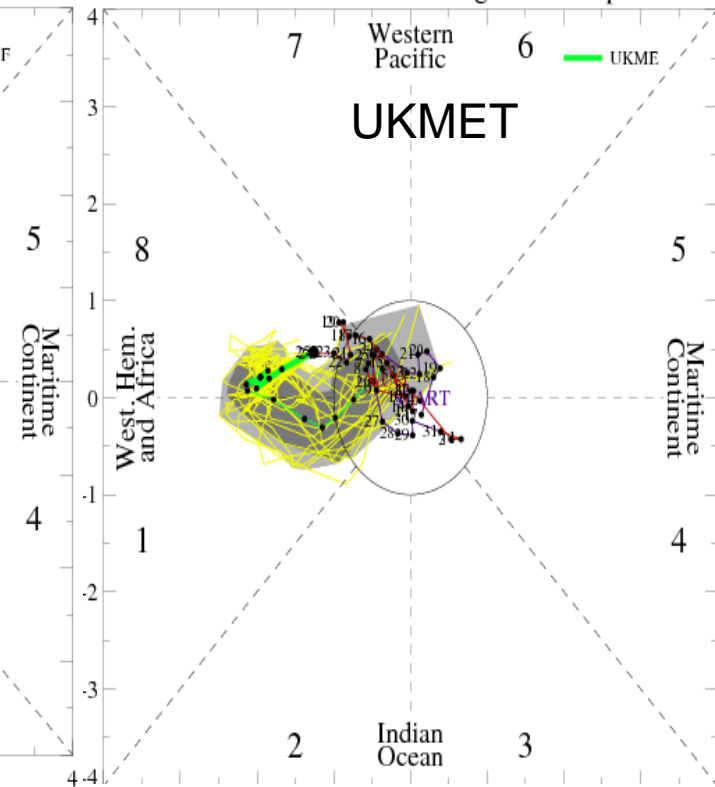
MJO Index Forecast for 26Aug2013-09Sep2013

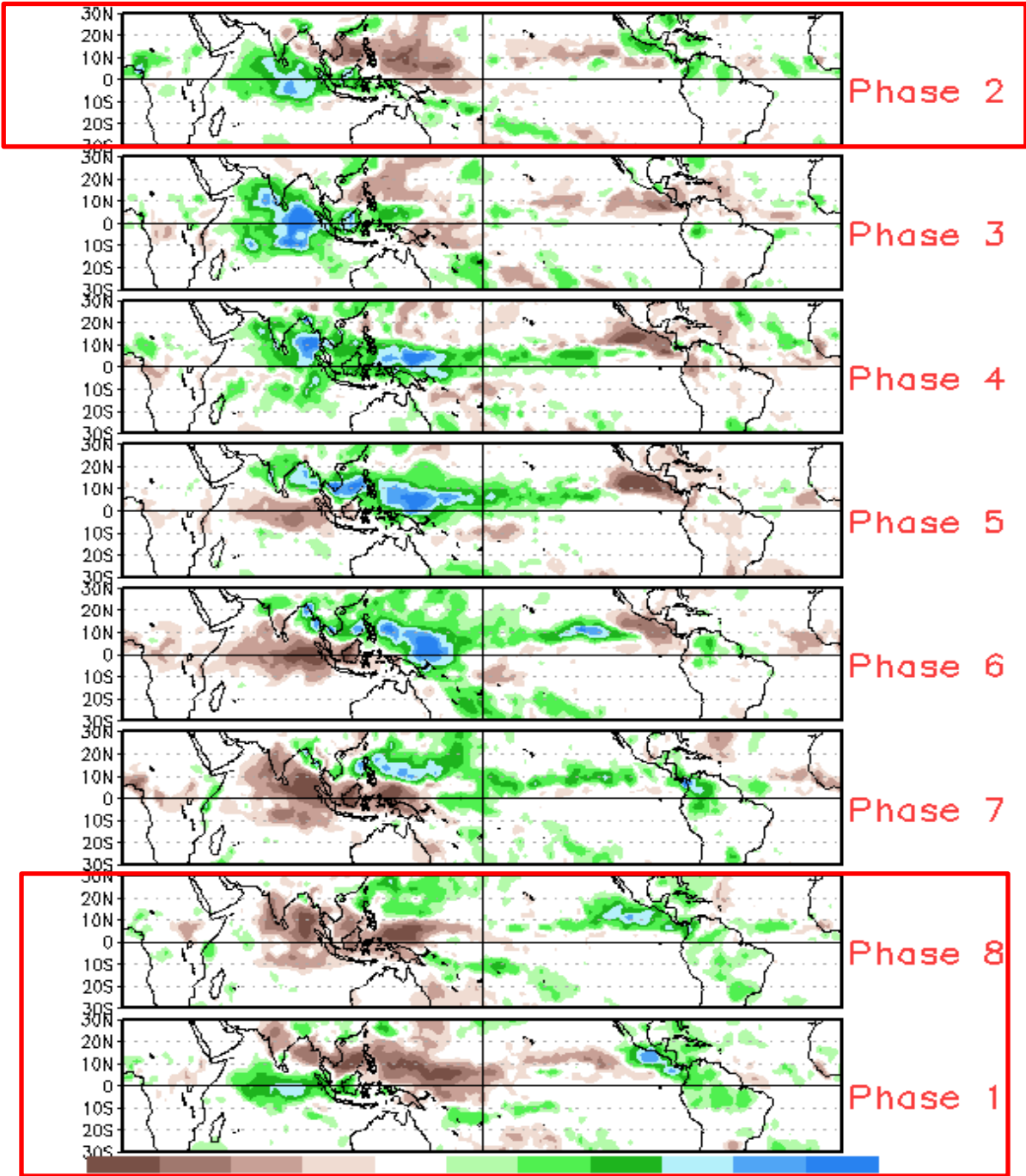


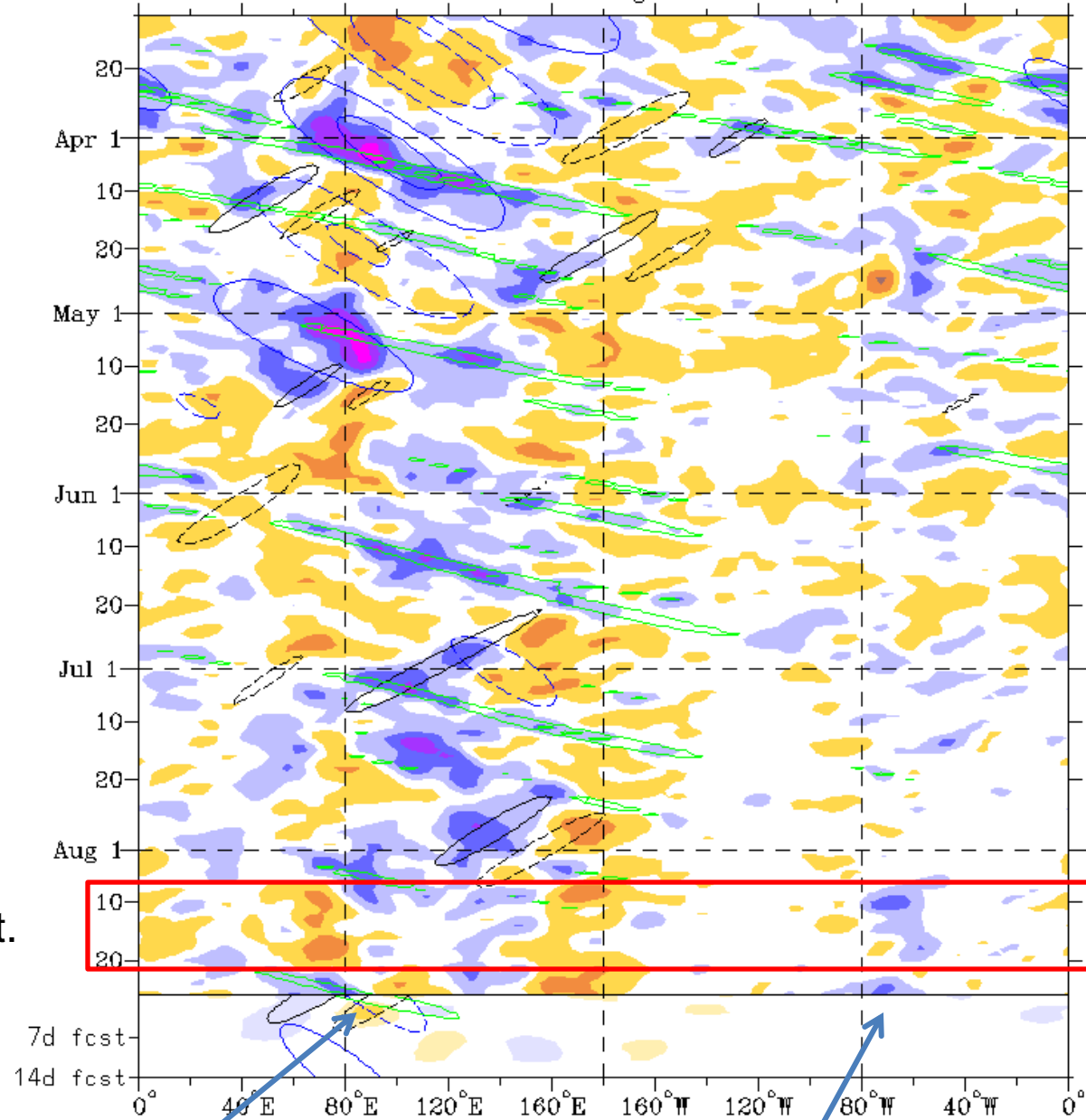
MJO Index Forecast for 26Aug2013-09Sep2013



MJO Index Forecast for 26Aug2013-09Sep2013







No robust signal, most of August.

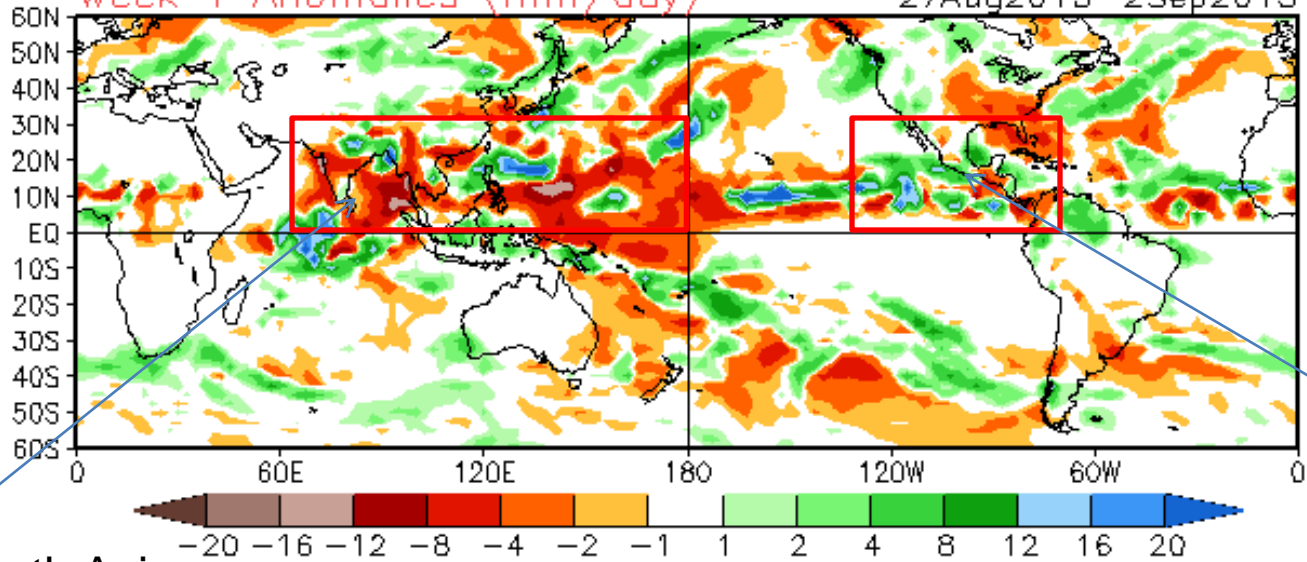
Kelvin Wave over Indian Ocean  
Lots of interference.

Potential MJO related  
activity over east Pac.



Week 1 Anomalies (mm/day)

27Aug2013-2Sep2013

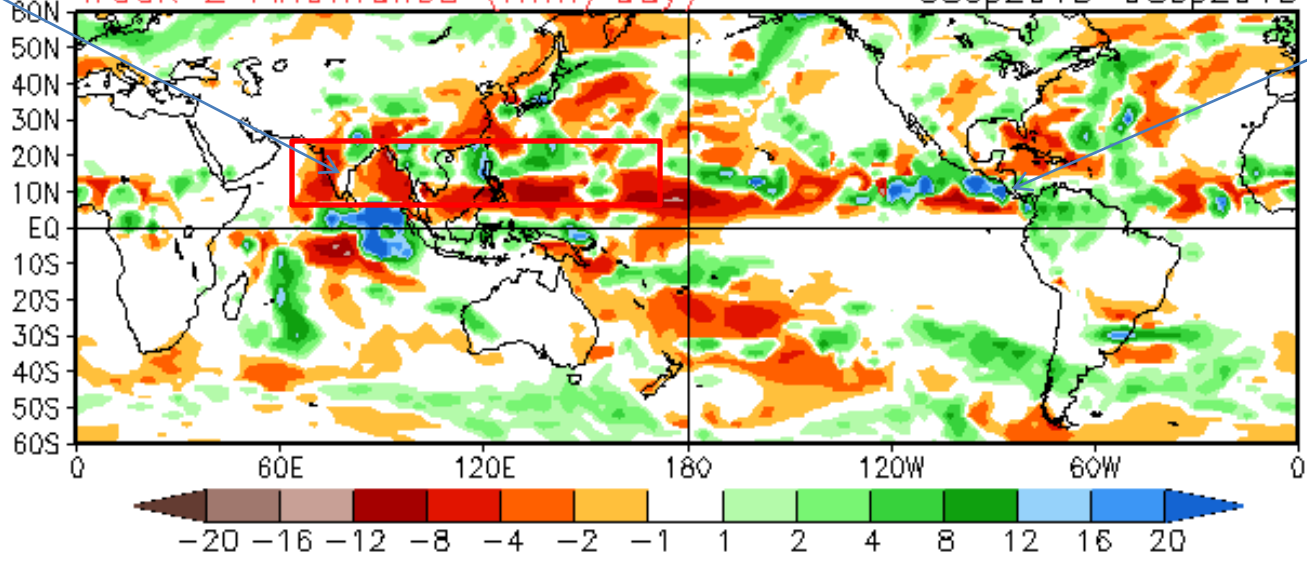


Dry over South Asia

Wet over Americas

Week 2 Anomalies (mm/day)

3Sep2013-9Sep2013





# Graphical Tropical Weather Outlook

National Hurricane Center Miami, Florida



800 AM EDT TUE AUG 27 2013

Satellite Image: 0722 AM EDT

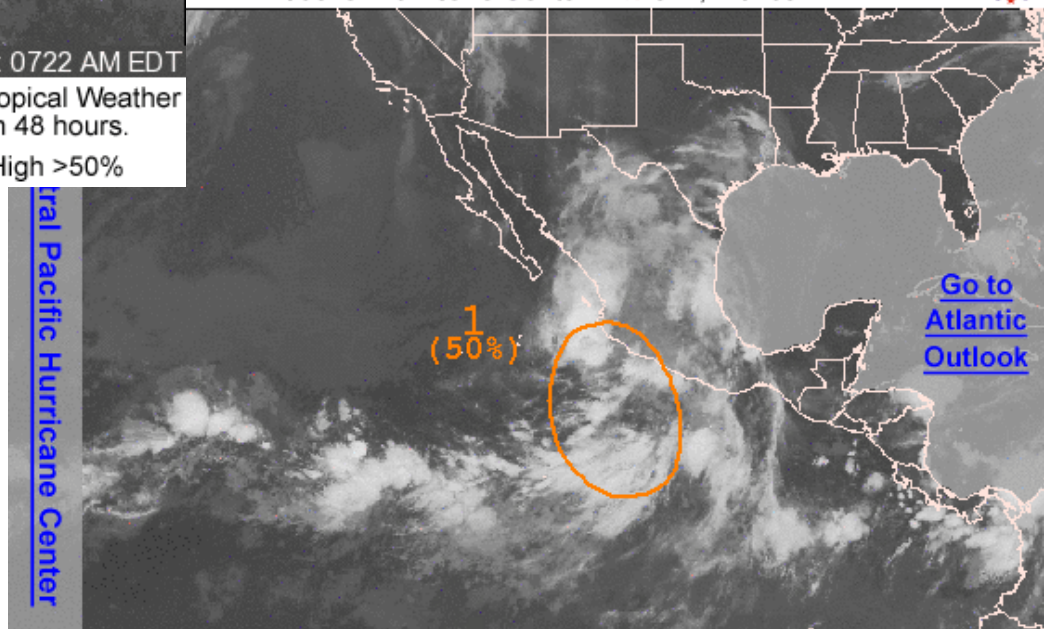
Outlined areas denote current position of systems discussed in the Tropical Weather Outlook. Color indicates probability of tropical cyclone formation within 48 hours.

Low <30%
  Medium 30-50%
  High >50%

Central Pacific Hurricane Center

# Graphical Tropical Weather Outlook

National Hurricane Center Miami, Florida

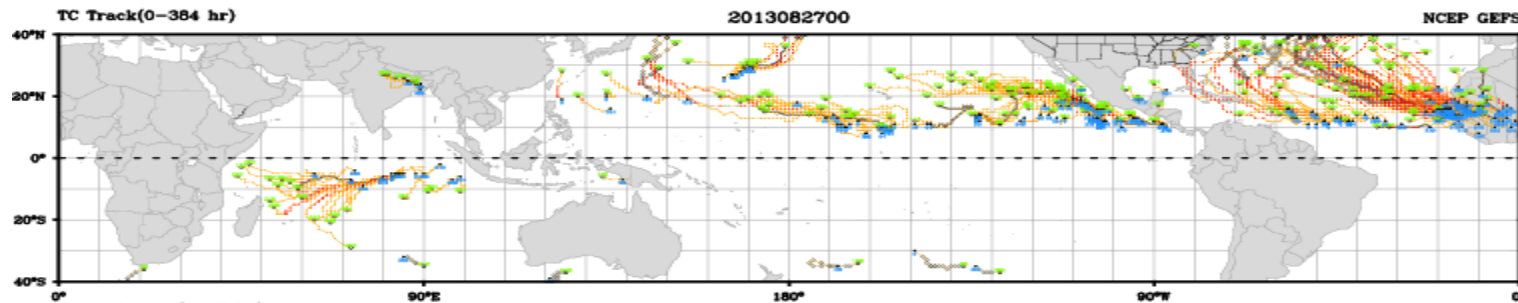


500 AM PDT TUE AUG 27 2013

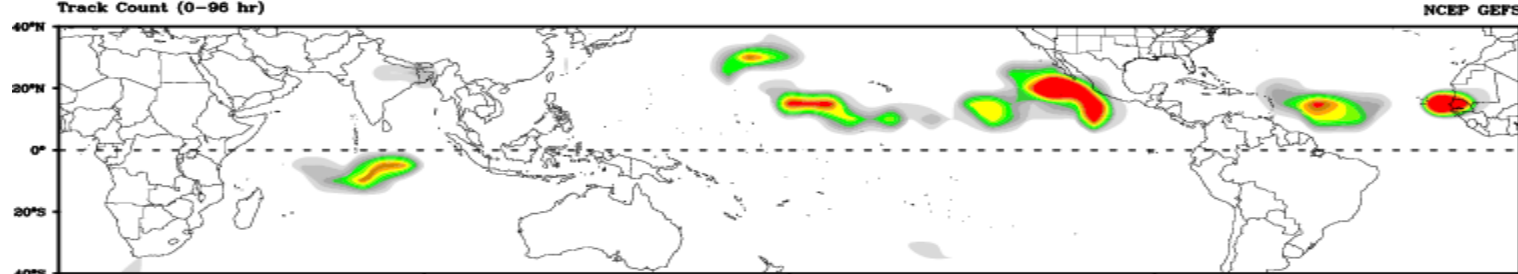
Satellite Image: 0422 AM PDT

Outlined areas denote current position of systems discussed in the Tropical Weather Outlook. Color indicates probability of tropical cyclone formation within 48 hours.

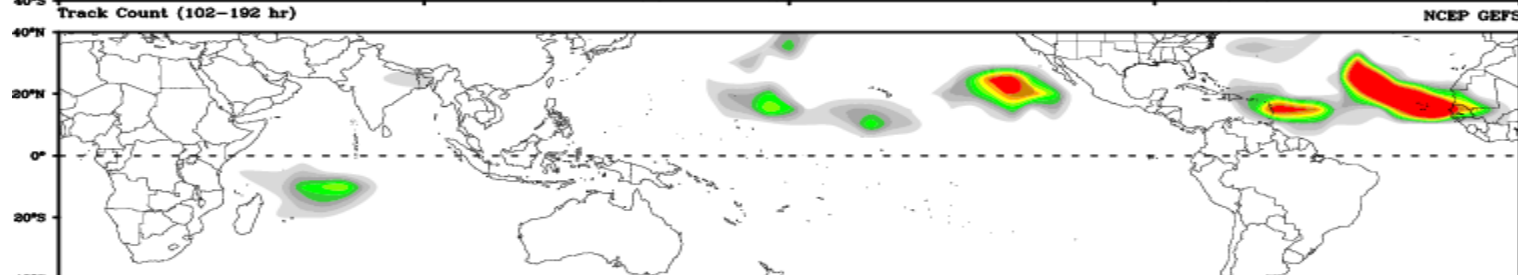
Low <30%
  Medium 30-50%
  High >50%



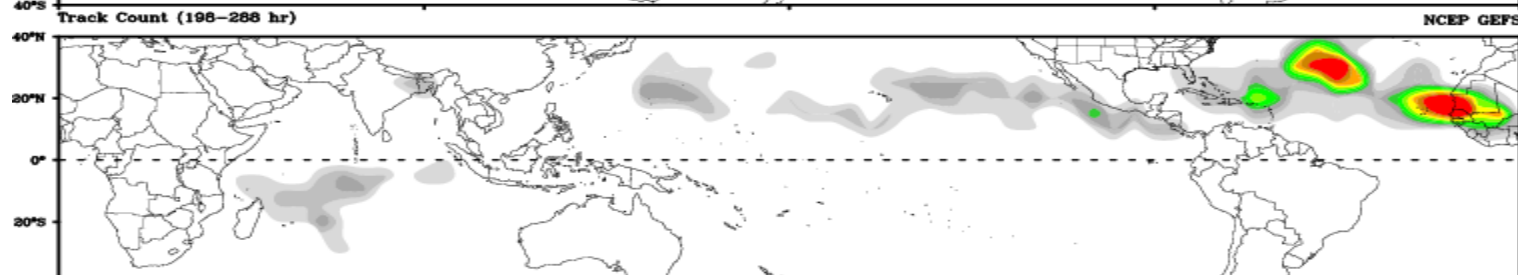
Days 1-4



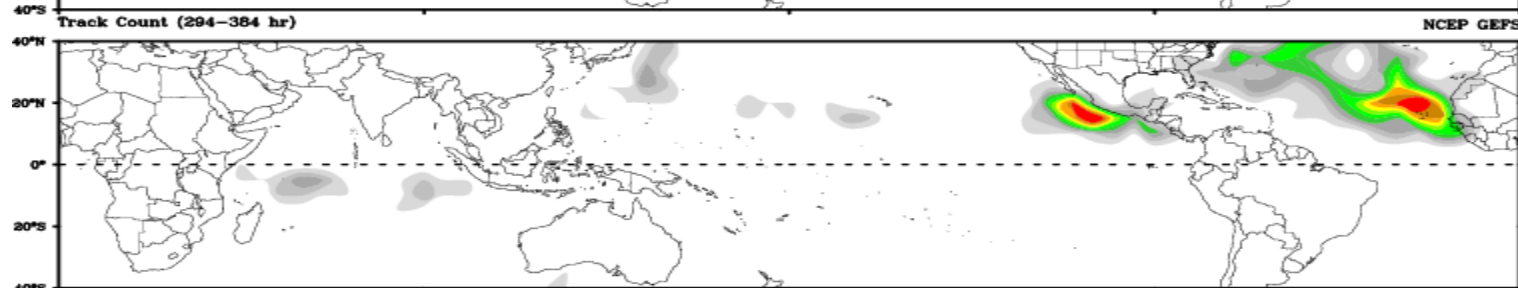
Day 5-8



Day 9-12



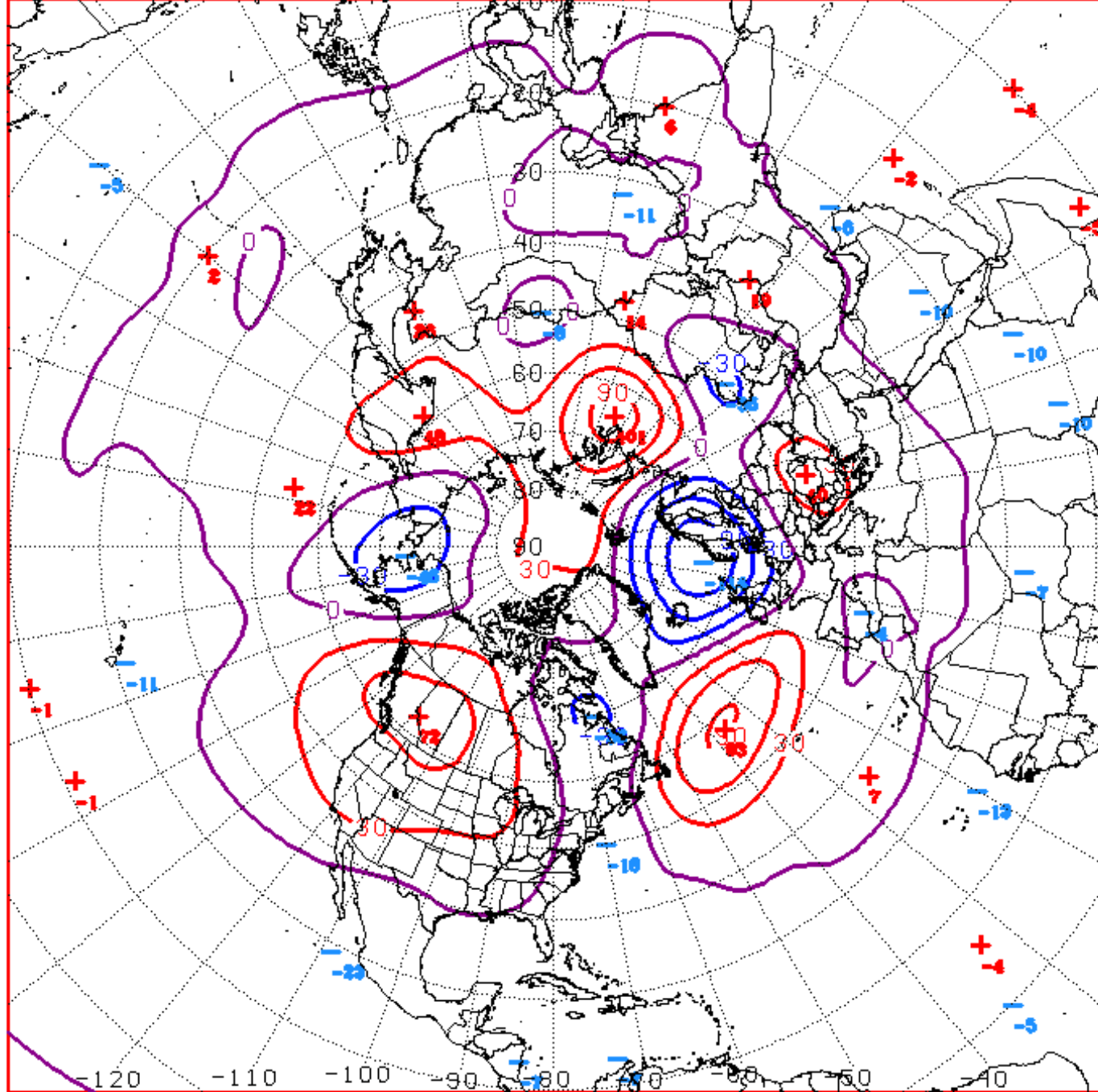
Day 13-15



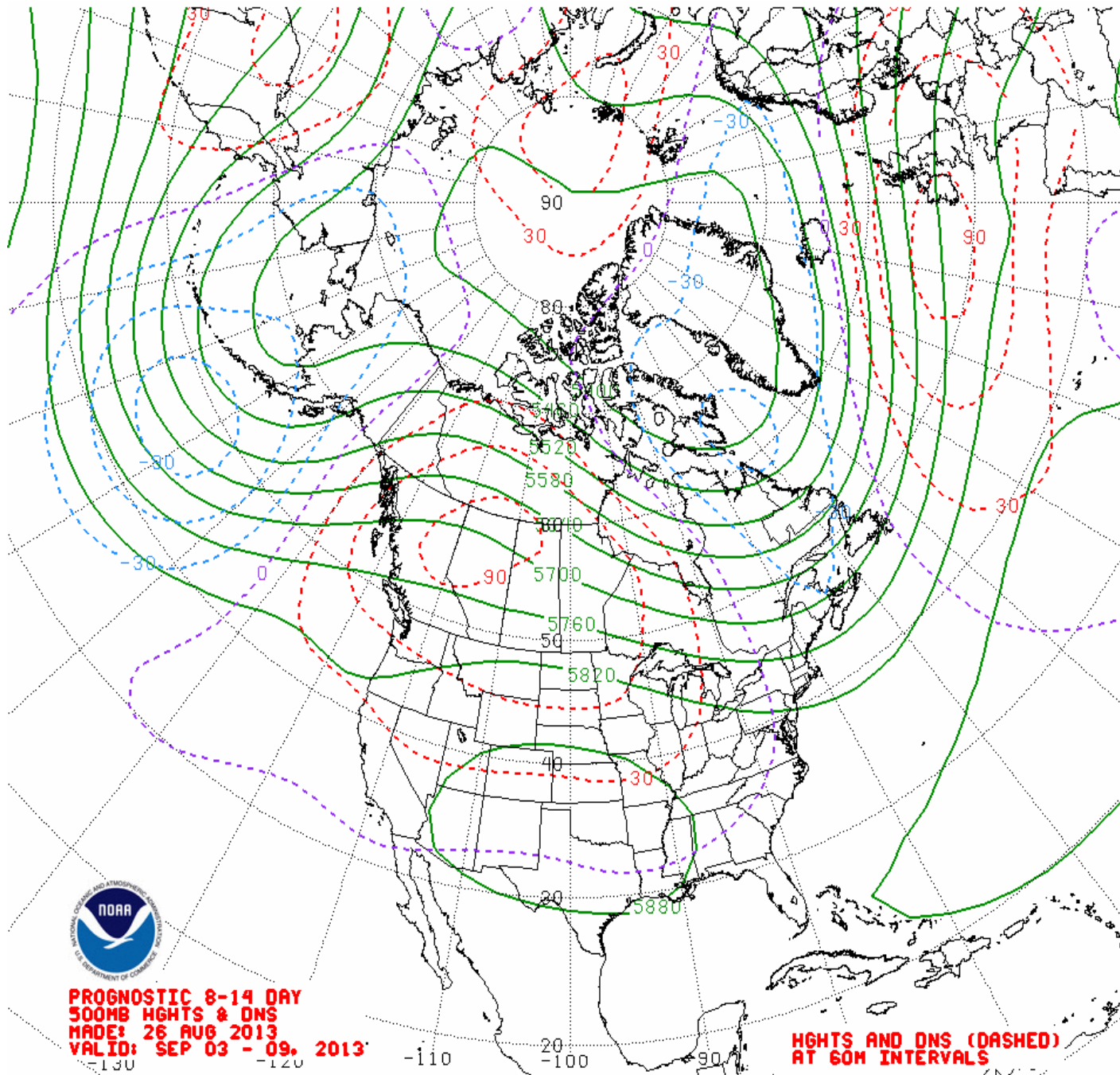
# Connections to U.S. Impacts

# CFSv2 Teleconnection Forecast



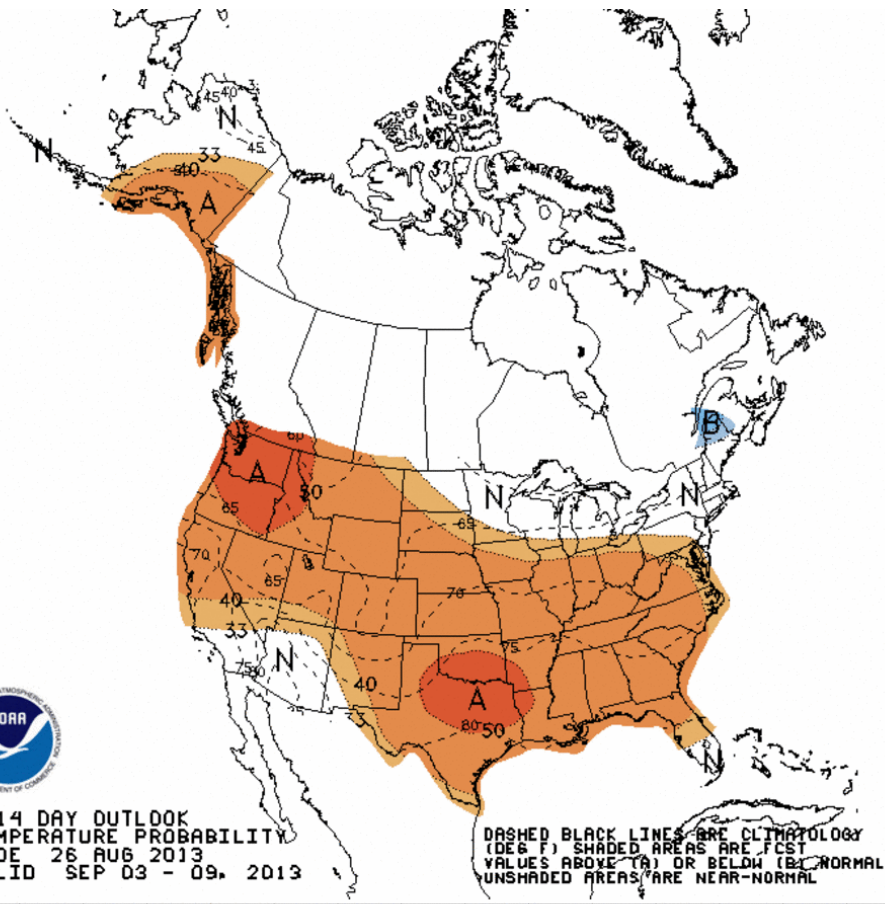


D+11 500 MB ANOMALIES FROM 00Z ECMM  
CPC MAP MADE AUG 27 2013 1101 UTC CNTD SEP 07 2013



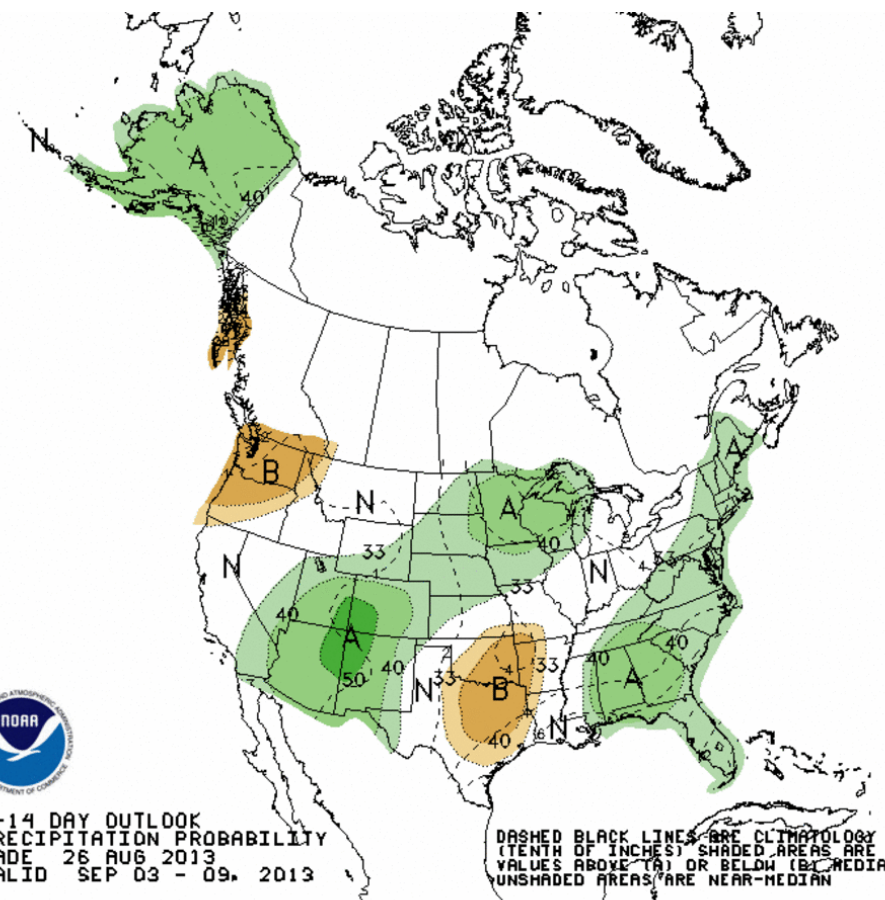
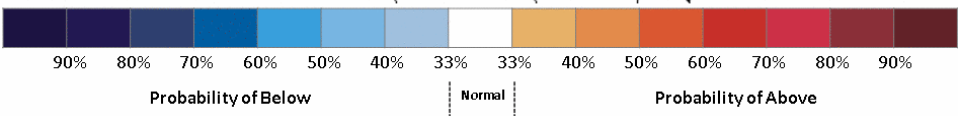
**PROGNOSTIC 8-14 DAY**  
**500MB HGTs & DNS**  
**MADE: 26 AUG 2013**  
**VALID: SEP 03 - 09, 2013**

**HGTs AND DNS (DASHED)**  
**AT 60M INTERVALS**



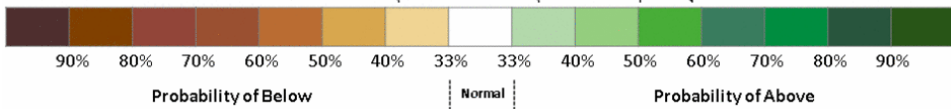
8-14 DAY OUTLOOK  
TEMPERATURE PROBABILITY  
MADE 26 AUG 2013  
VALID SEP 03 - 09, 2013

DASHED BLACK LINES ARE CLIMATE  
(DEG F) SHADED AREAS ARE FCST  
VALUES ABOVE (A) OR BELOW (B) NORMAL  
UNSHADED AREAS ARE NEAR-NORMAL



8-14 DAY OUTLOOK  
PRECIPITATION PROBABILITY  
MADE 26 AUG 2013  
VALID SEP 03 - 09, 2013

DASHED BLACK LINES ARE CLIMATE  
(TENTH OF INCHES) SHADED AREAS ARE FCST  
VALUES ABOVE (A) OR BELOW (B) MEDIAN  
UNSHADED AREAS ARE NEAR-MEDIAN

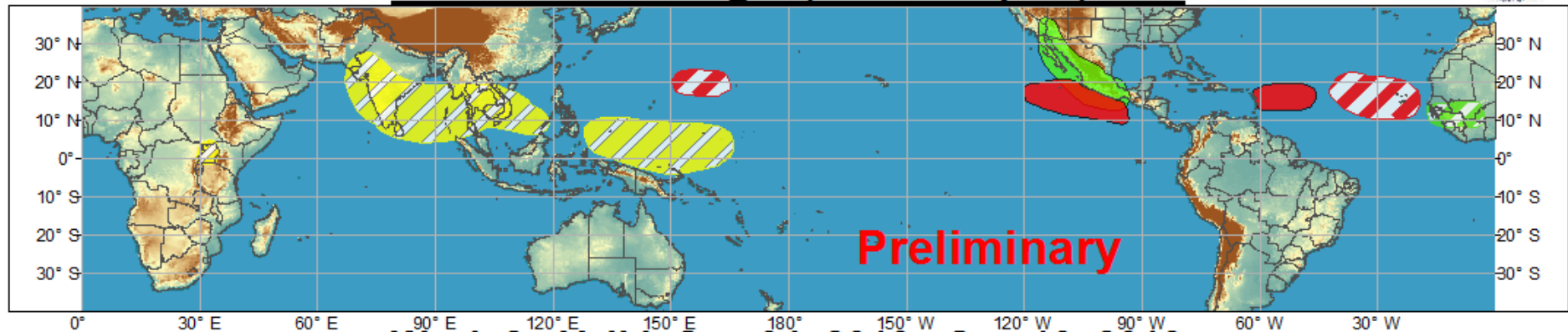




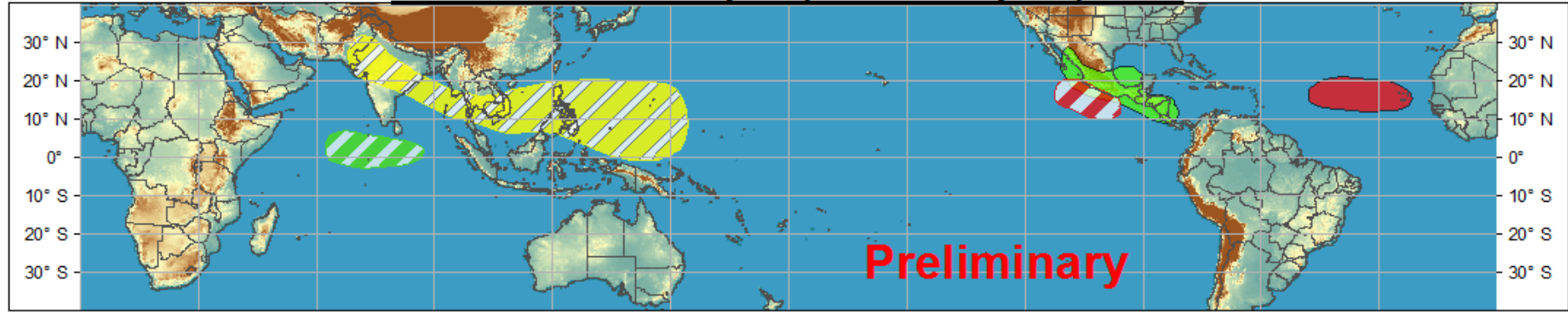


# Global Tropics Hazards and Benefits Outlook - Climate Prediction Center

## Week 1 - Valid: Aug 28, 2013 - Sep 03, 2013



## Week 2 - Valid: Sep 04, 2013 - Sep 10, 2013



Produced: 08/27/2013

Forecaster: Rosencrans

- Confidence**  
High Moderate
- Tropical Cyclone Formation** Development of a tropical cyclone that eventually reaches tropical storm/cyclone strength.
  - Above-average rainfall** Weekly total rainfall in the upper third of the historical range.
  - Below-average rainfall** Weekly total rainfall in the lower third of the historical range.
  - Above-normal temperatures** 7-day mean temperatures in the upper third of the historical range.
  - Below-normal temperatures** 7-day mean temperatures in the lower third of the historical range.

Product is updated once per week. The product targets broad scale conditions integrated over a 7-day period for US interests only. Consult your local responsible forecast agency.

