

Global Tropics Hazards And Benefits Outlook

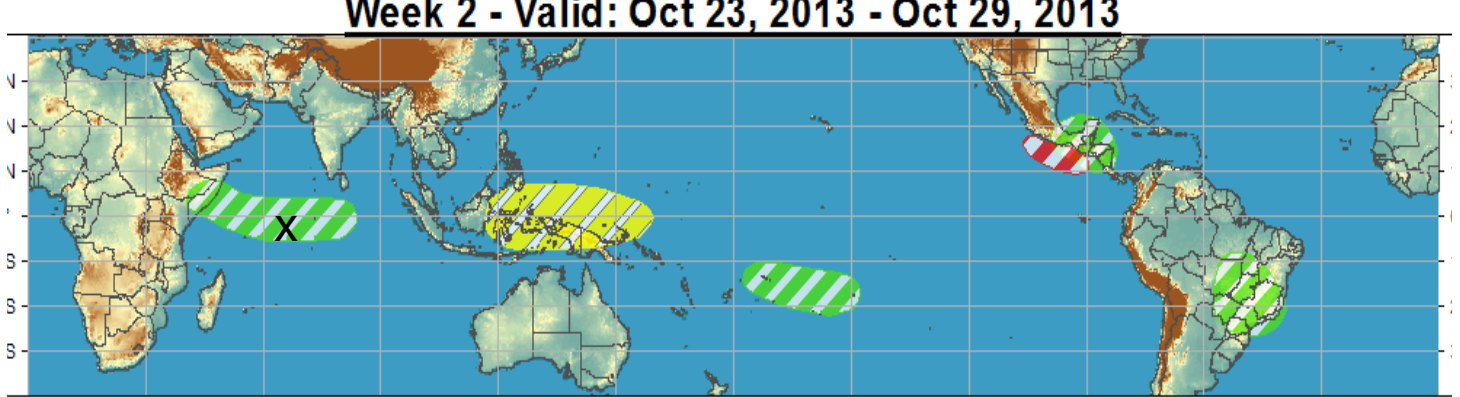
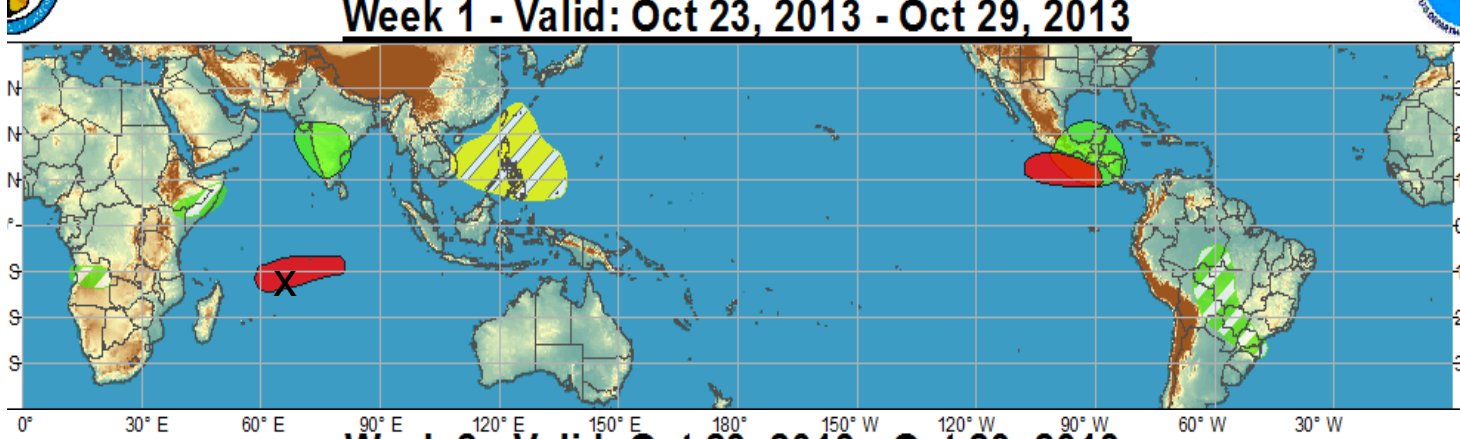
October 29, 2013

Matthew Rosencrans

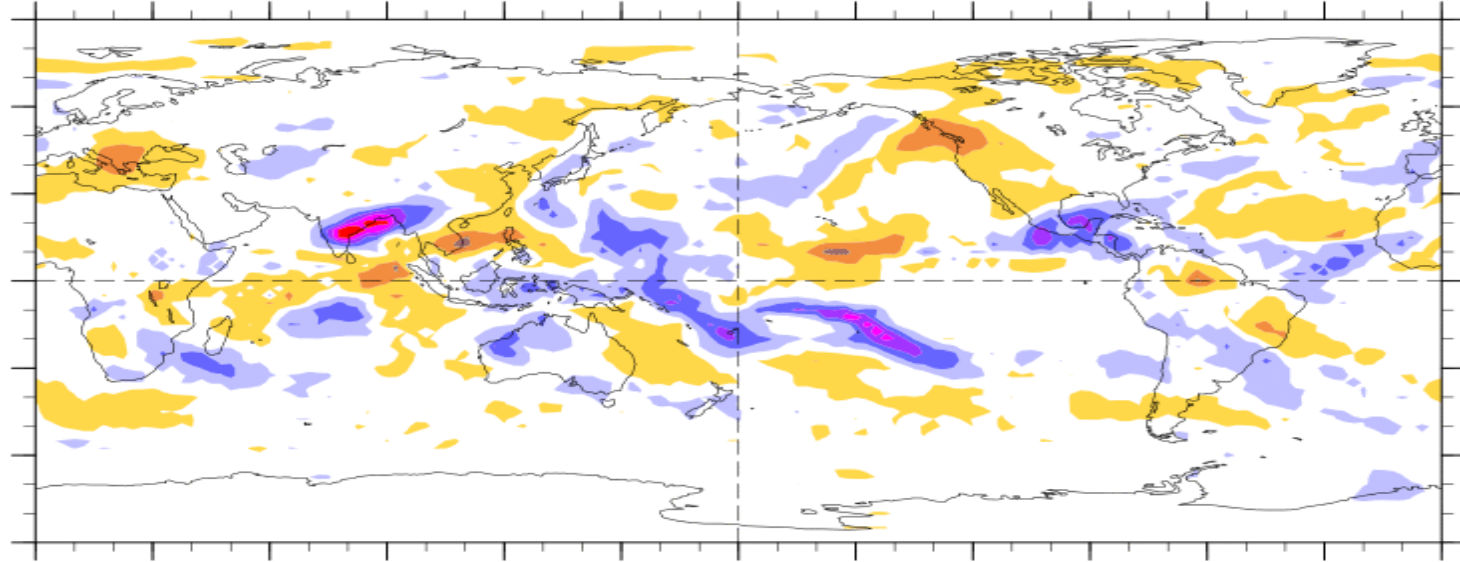
Outline

1. Review of Recent Conditions
2. Synopsis of Climate Modes
3. GTH Outlook and Forecast Discussion
4. Connections to U.S. Impacts

Outlook Review



7-Day Average OLR Anomaly 2013/10/21 - 2013/10/27



Cool shading
More clouds/rain

Warm shading
Less clouds/rain

Synopsis of Climate Modes

ENSO:

- ENSO-neutral is expected into the Northern Hemisphere spring 2014.

MJO and other subseasonal tropical variability:

- The MJO remained weak during the past 7 days. Most observational indicators are inconsistent with robust MJO activity. Other modes of subseasonal variability are playing a large role in the pattern of anomalous tropical convection.
- Dynamical model MJO index forecasts support little to no MJO related activity during the next 2 weeks. Statistical models have little to no MJO related signal as well.

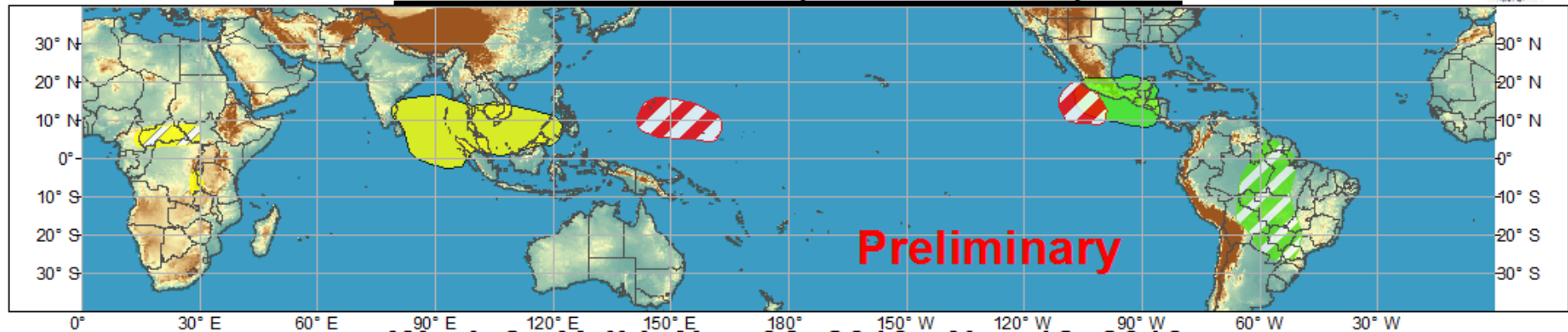
Extratropics:

- The extended range forecast for the U.S. is not influenced greatly by the MJO or coherent ENSO modes. The AO is currently forecast to be significantly positive with an amplified pattern over much of North America.



Global Tropics Hazards and Benefits Outlook - Climate Prediction Center

Week 1 - Valid: Oct 30, 2013 - Nov 05, 2013



Week 2 - Valid: Nov 06, 2013 - Nov 12, 2013



Confidence
High Moderate

- Tropical Cyclone Formation** Development of a tropical cyclone that eventually reaches tropical storm/cyclone strength.
- Above-average rainfall** Weekly total rainfall in the upper third of the historical range.
- Below-average rainfall** Weekly total rainfall in the lower third of the historical range.
- Above-normal temperatures** 7-day mean temperatures in the upper third of the historical range.
- Below-normal temperatures** 7-day mean temperatures in the lower third of the historical range.

Produced: 10/29/2013

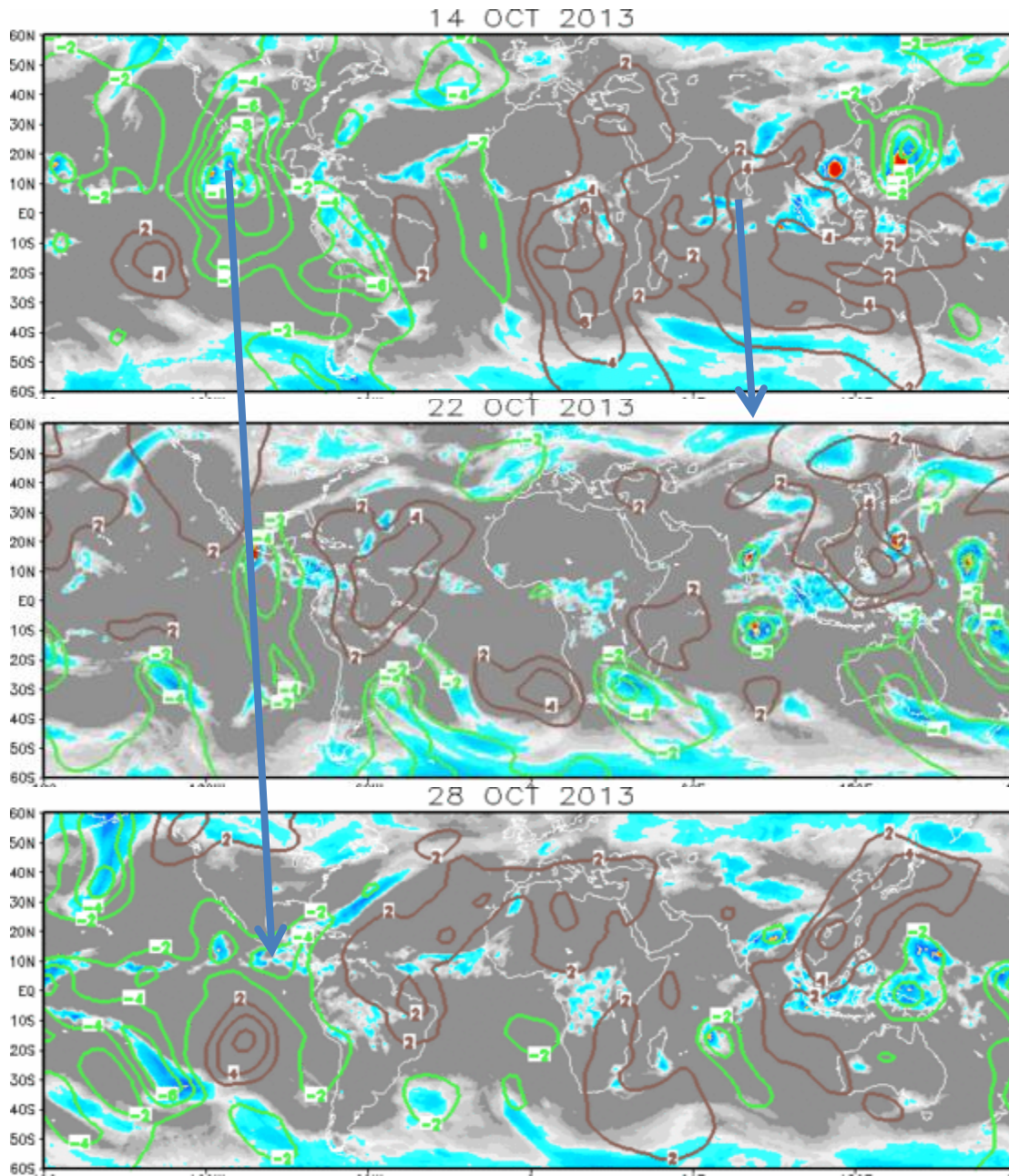
Forecaster: Rosencrans

Product is updated once per week. The product targets broad scale conditions integrated over a 7-day period for US interests only. Consult your local responsible forecast agency.



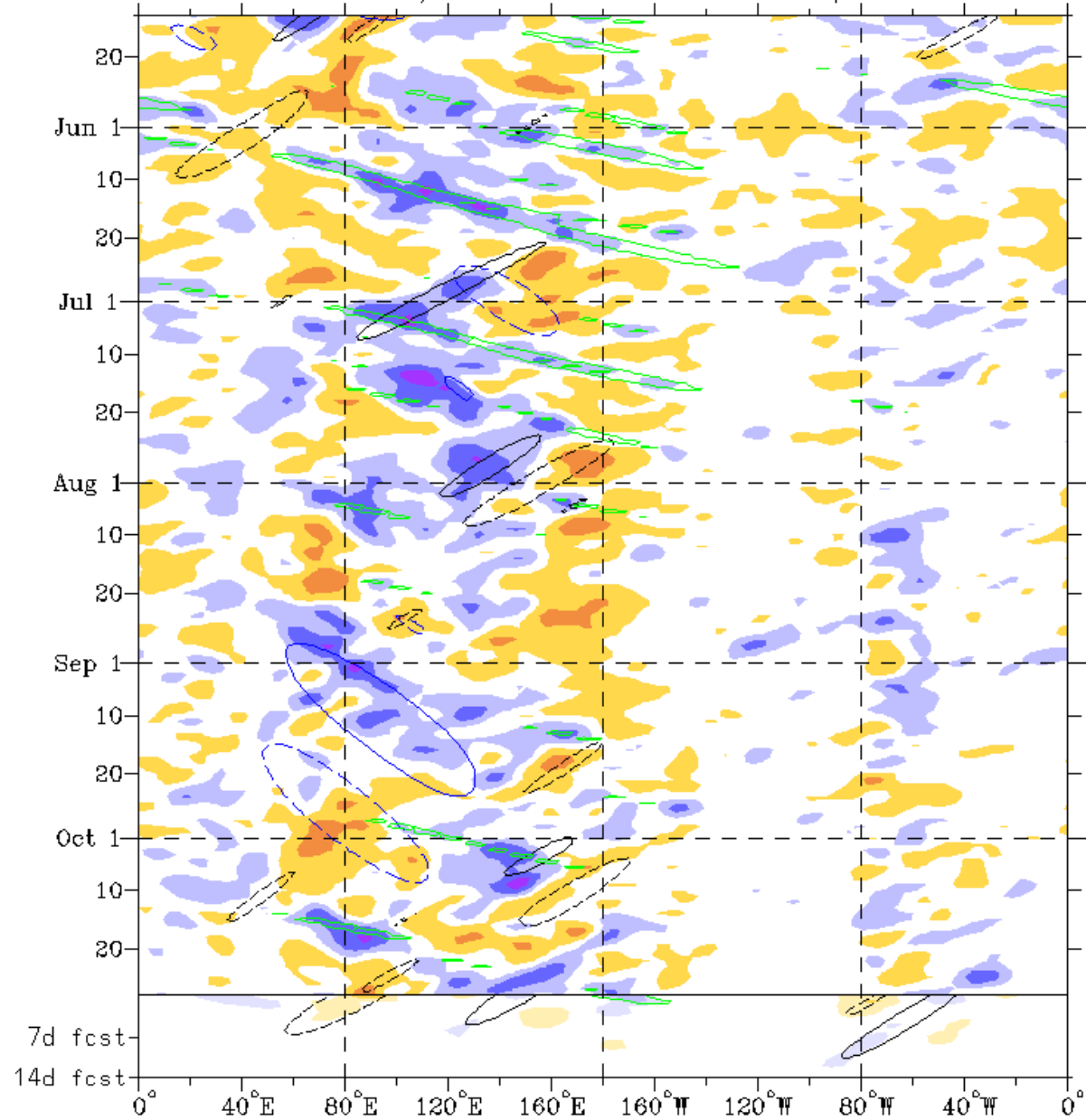
IR Satellite & 200-hpa Velocity Potential Anomalies

Green: Enhanced Divergence Brown: Enhanced Convergence



Nearly vertical
arrows = Slow
propagation.

Evidence of
other modes

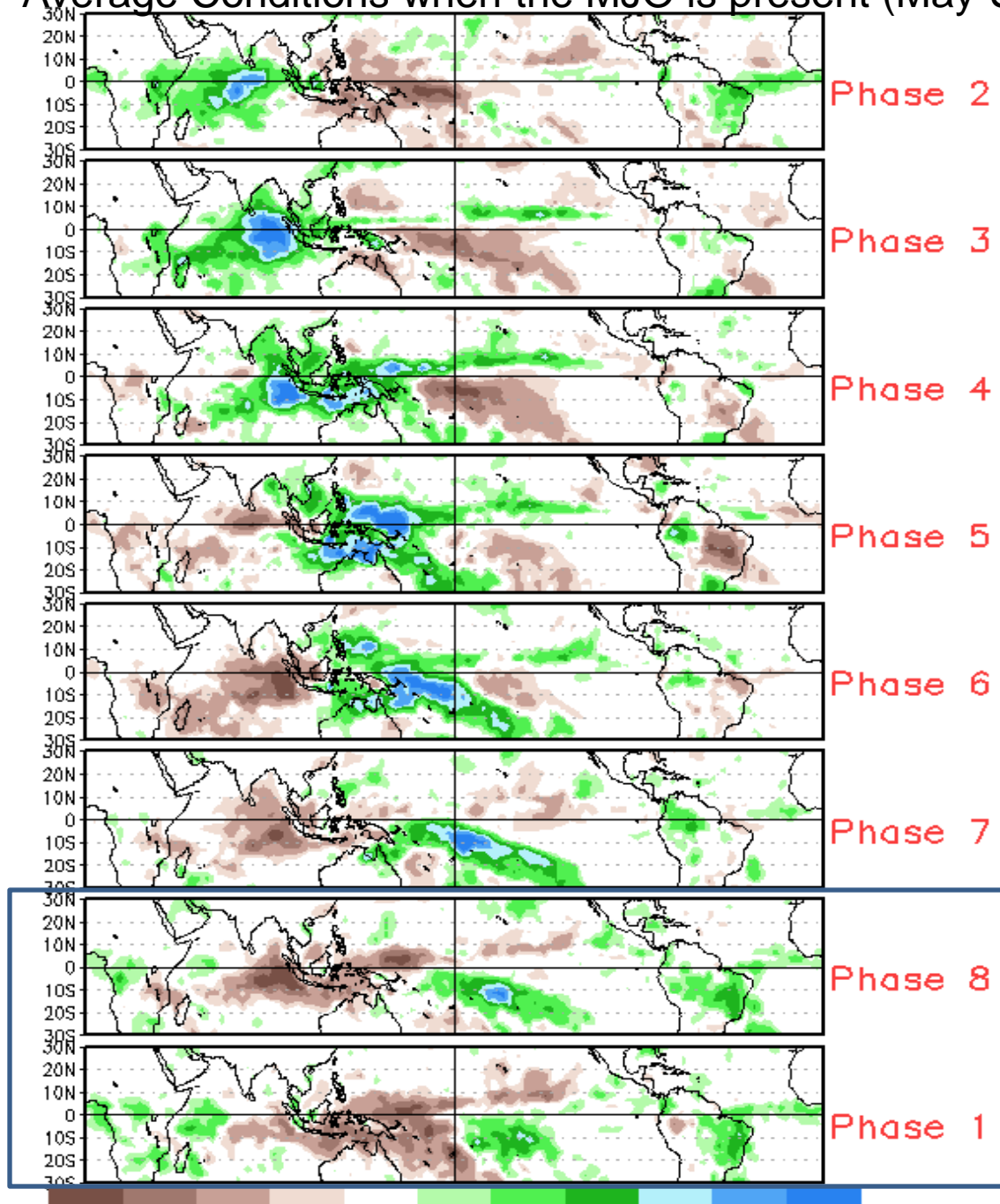


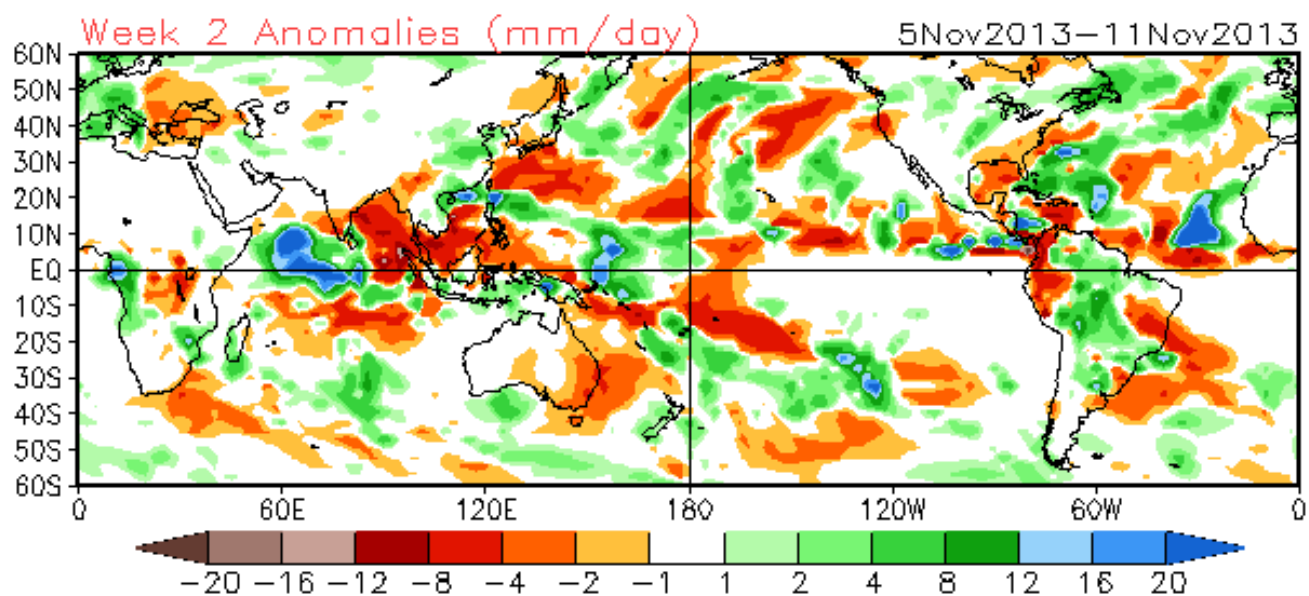
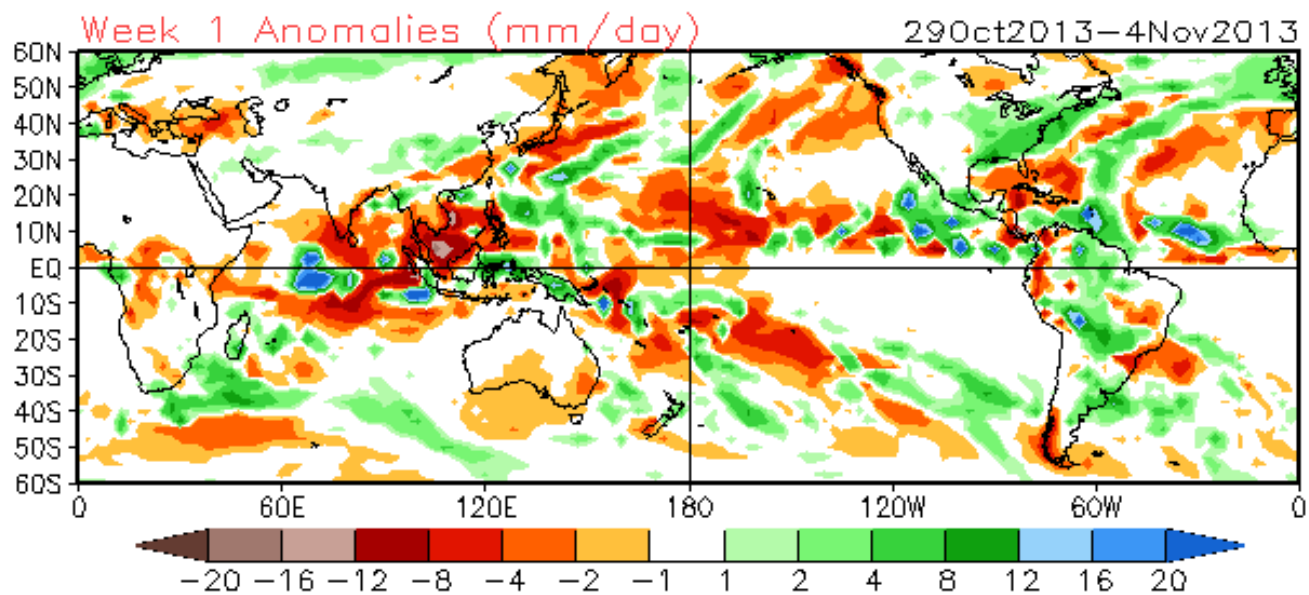
Indications of Equatorial Rossby Waves influencing the pattern.

MJO not an active factor in the latest observations.

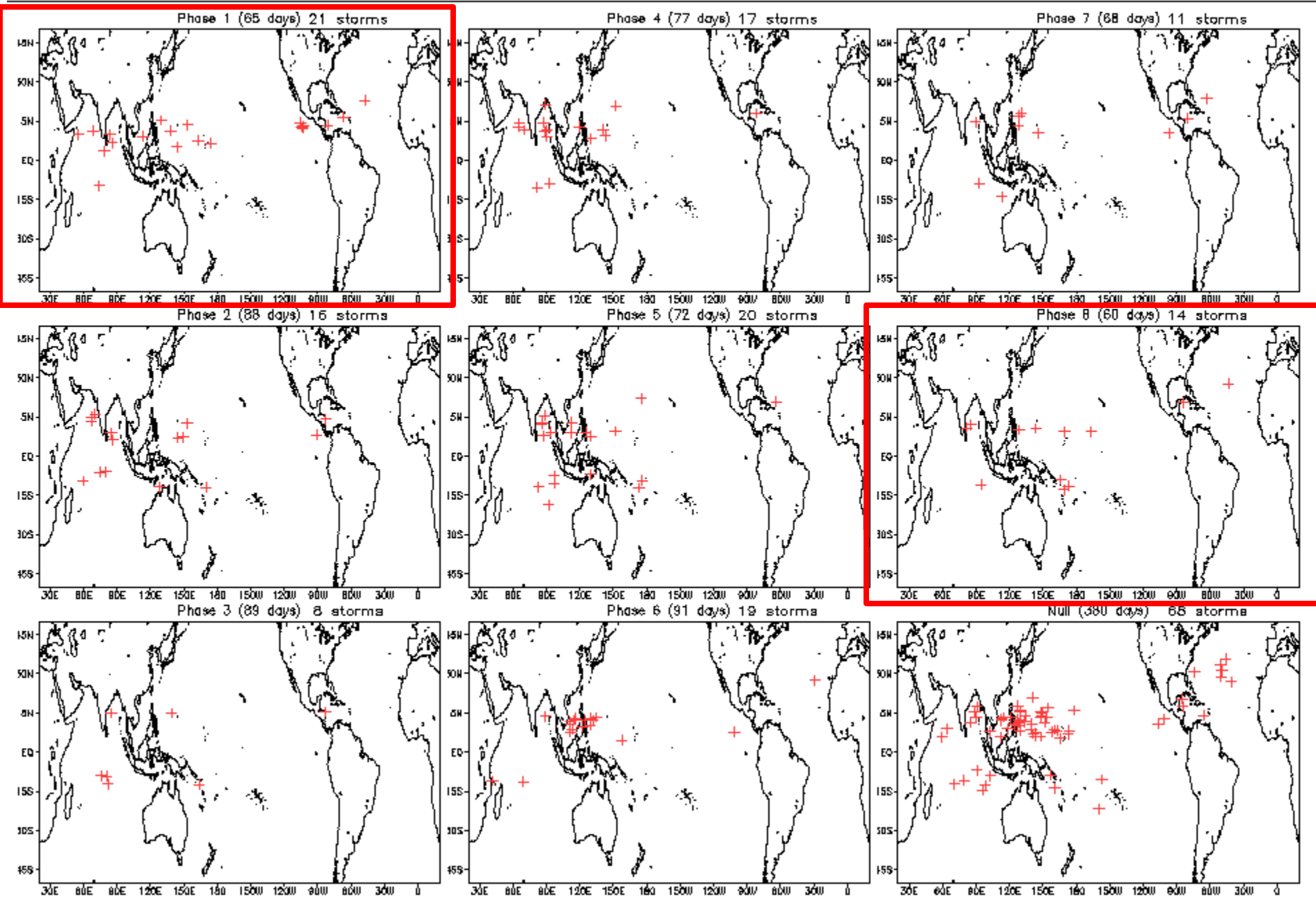
Atmospheric Kelvin Wave to impact eastern Pacific, currently just east of Date Line.

Average Conditions when the MJO is present (May-Sep)





November Tropical Storm Formation by MJO phase





Graphical Tropical Weather Outlook

National Hurricane Center Miami, Florida



800 AM EDT TUE OCT 29 2013

Satellite Image: 0652 AM EDT

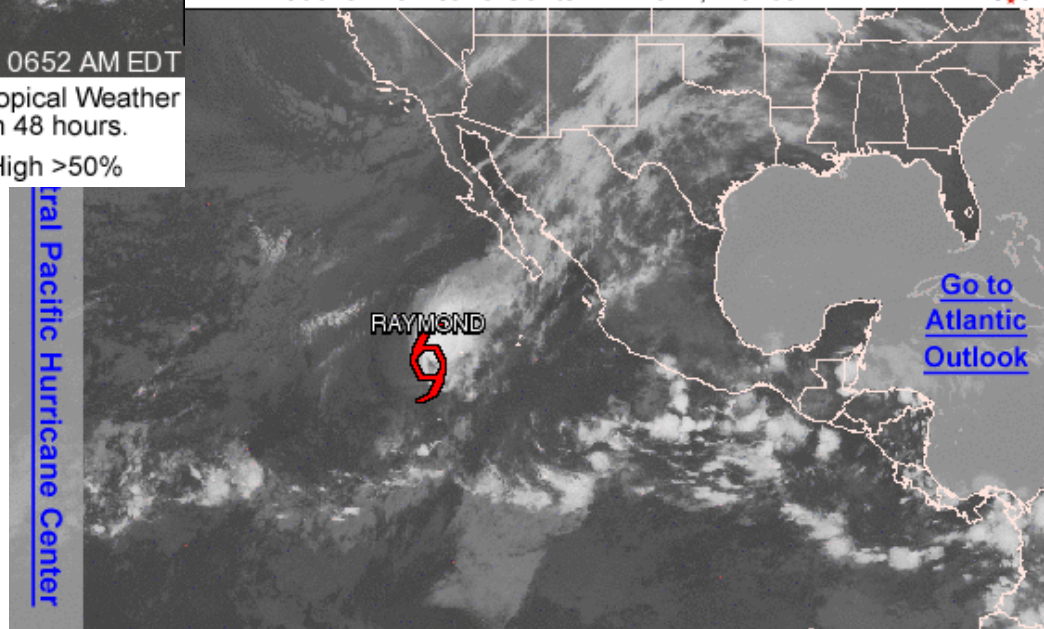
Outlined areas denote current position of systems discussed in the Tropical Weather Outlook. Color indicates probability of tropical cyclone formation within 48 hours.

Low <30%
 Medium 30-50%
 High >50%

FROM NHC EPAC GTWO:
 THIS SYSTEM HAS A LOW CHANCE...NEAR 0 PERCENT...OF BECOMING A TROPICAL CYCLONE DURING THE NEXT 48 HOURS...AND A MEDIUM CHANCE...50 PERCENT...OF BECOMING A TROPICAL CYCLONE DURING THE NEXT 5 DAYS.

Graphical Tropical Weather Outlook

National Hurricane Center Miami, Florida

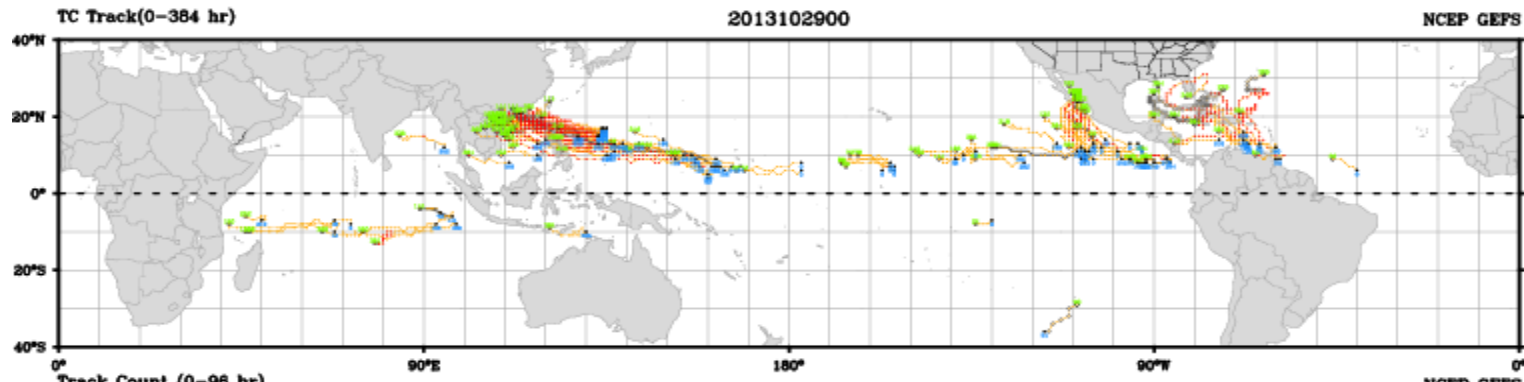


500 AM PDT TUE OCT 29 2013

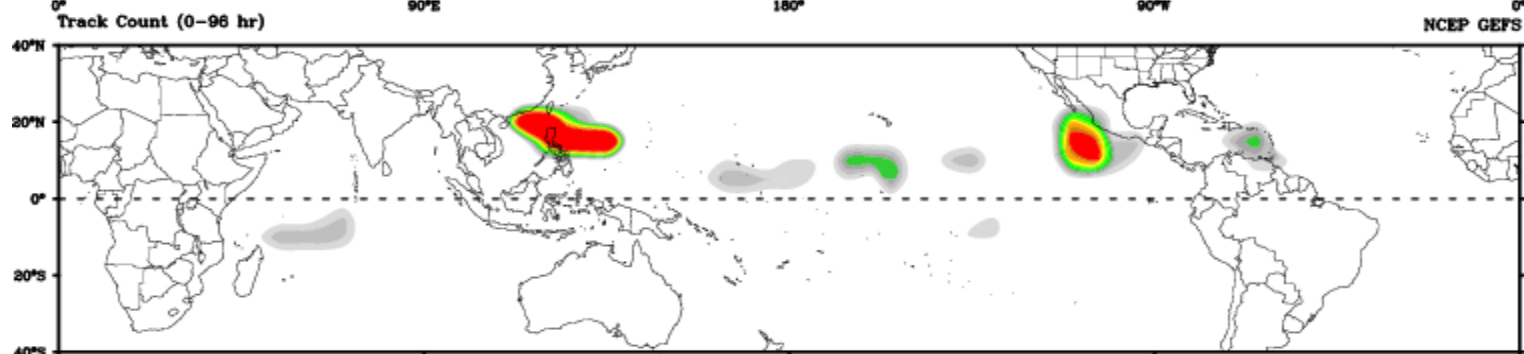
Satellite Image: 0352 AM PDT

Outlined areas denote current position of systems discussed in the Tropical Weather Outlook. Color indicates probability of tropical cyclone formation within 48 hours.

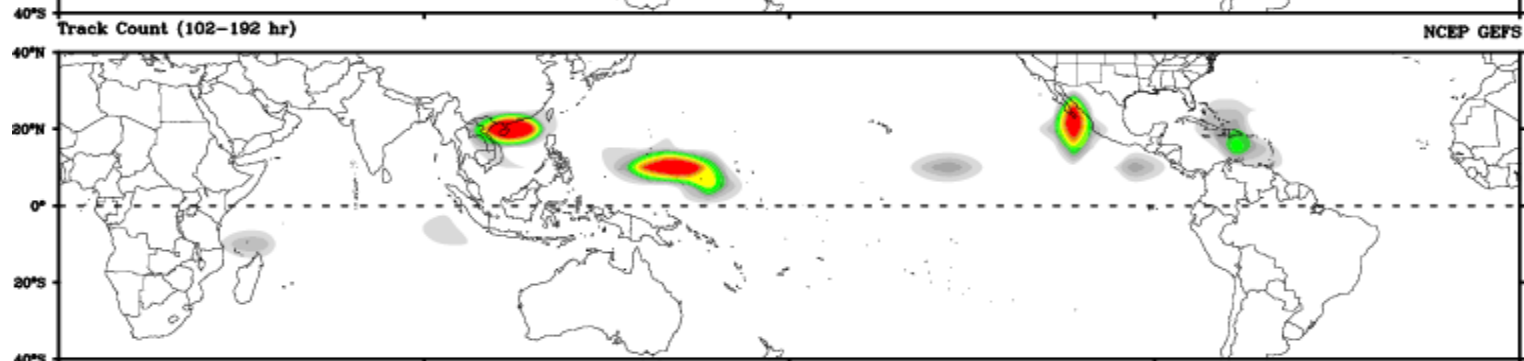
Low <30%
 Medium 30-50%
 High >50%



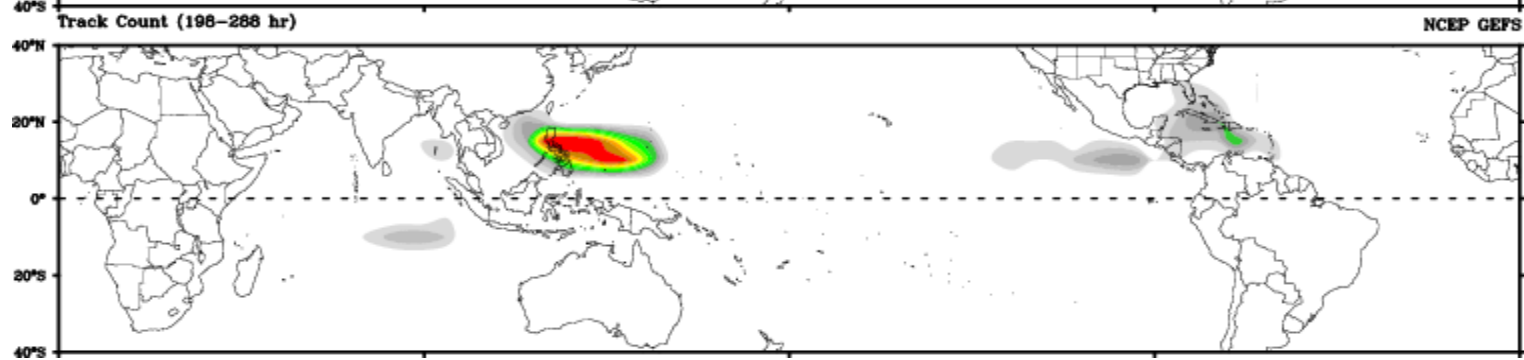
Days 1-4



Day 5-8

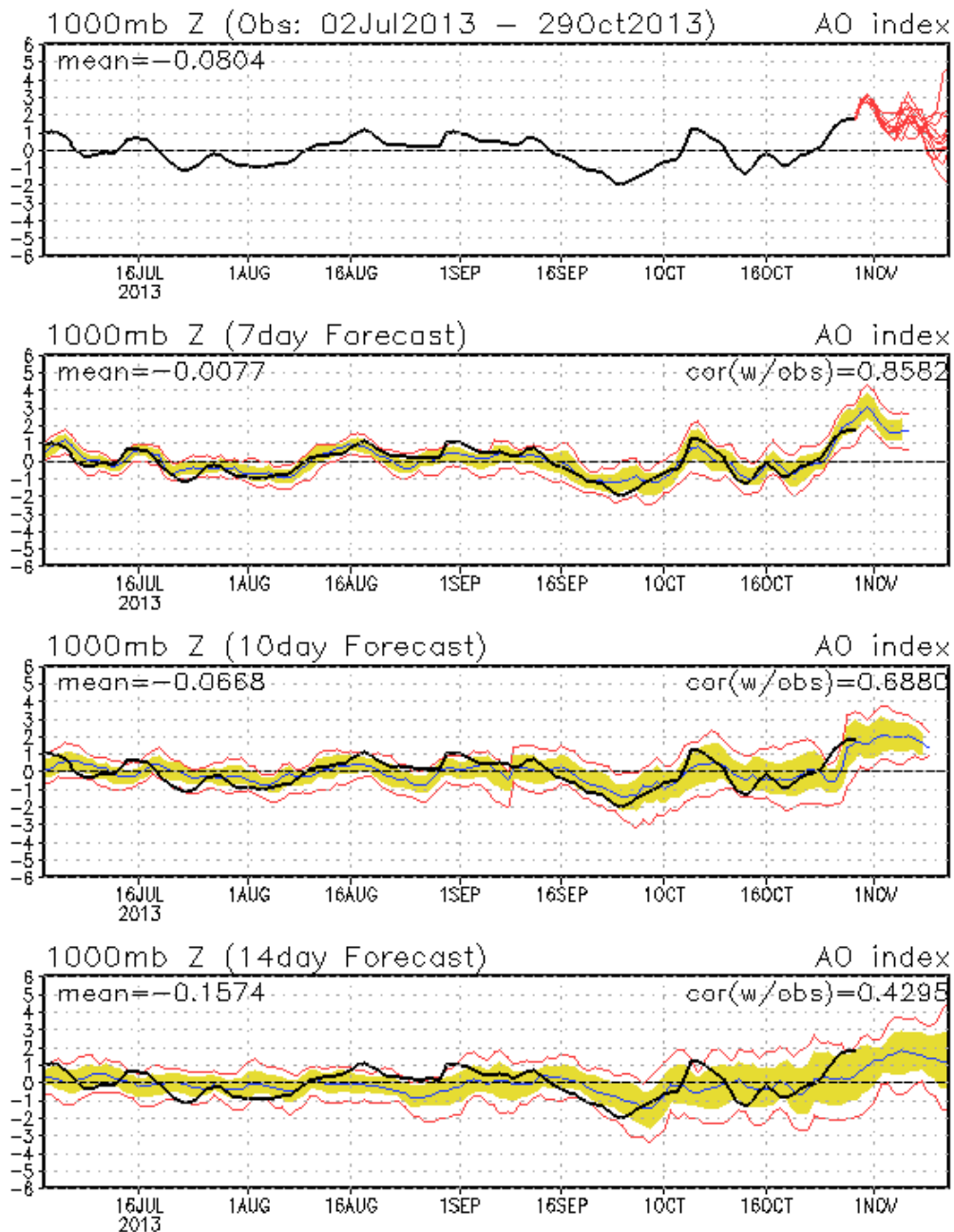


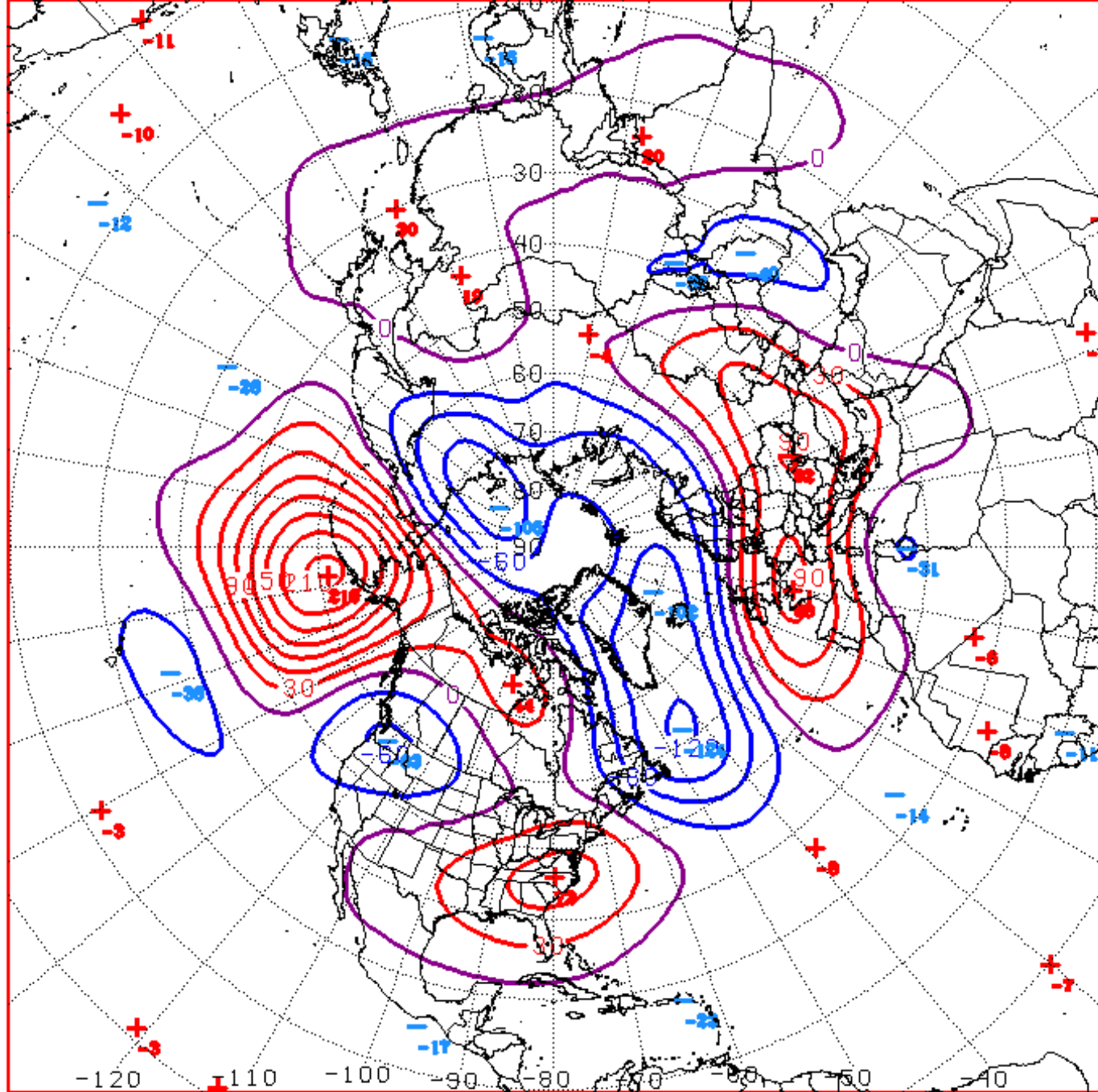
Day 9-12



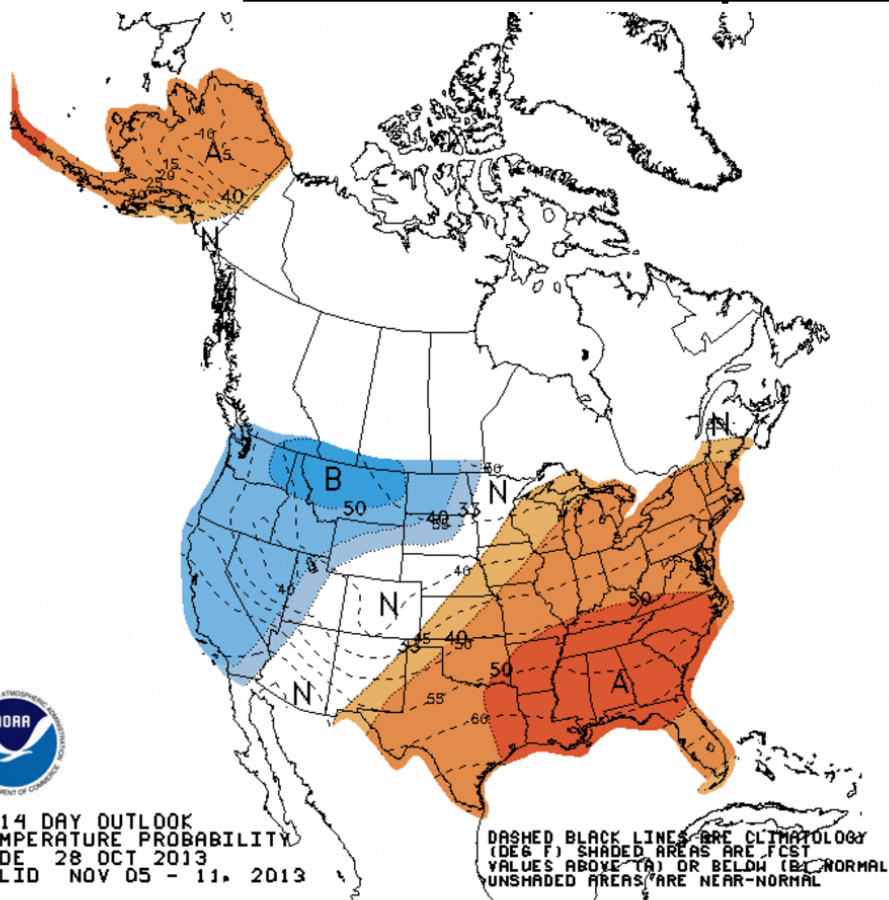
Connections to U.S. Impacts

AO: Observed & ENSM forecasts



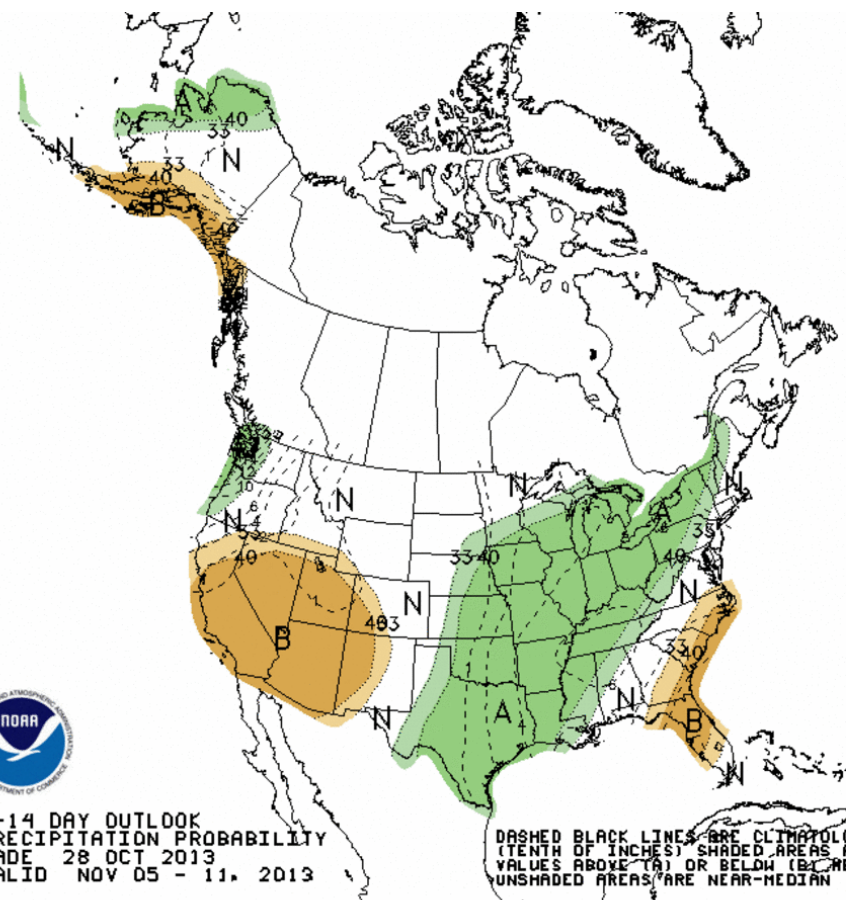
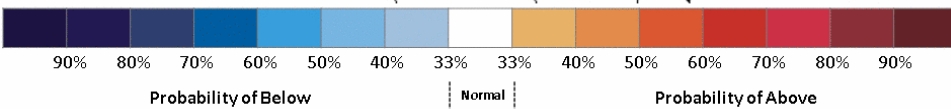


Week 2 – Temperature and Precipitation



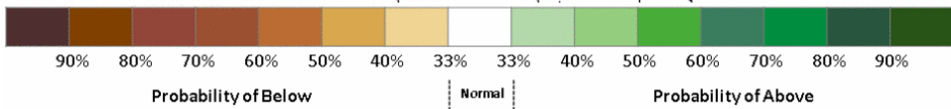
8-14 DAY OUTLOOK
TEMPERATURE PROBABILITY
MADE 28 OCT 2013
VALID NOV 05 - 11, 2013

DASHED BLACK LINES ARE CLIMATOLOGY (DEG F). SHADED AREAS ARE FCST VALUES ABOVE (A) OR BELOW (B) NORMAL. UNSHADED AREAS ARE NEAR-NORMAL.



8-14 DAY OUTLOOK
PRECIPITATION PROBABILITY
MADE 28 OCT 2013
VALID NOV 05 - 11, 2013

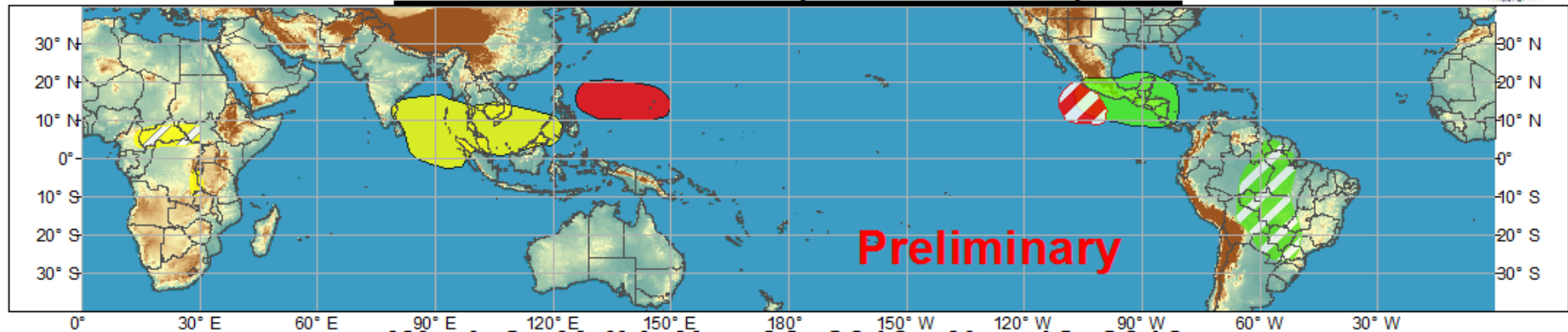
DASHED BLACK LINES ARE CLIMATOLOGY (TENTH OF INCHES). SHADED AREAS ARE FCST VALUES ABOVE (A) OR BELOW (B) MEDIAN. UNSHADED AREAS ARE NEAR-MEDIAN.





Global Tropics Hazards and Benefits Outlook - Climate Prediction Center

Week 1 - Valid: Oct 30, 2013 - Nov 05, 2013



Week 2 - Valid: Nov 06, 2013 - Nov 12, 2013



Produced: 10/28/2013

Forecaster: Rosencrans

- Confidence**
High Moderate
- Tropical Cyclone Formation** Development of a tropical cyclone that eventually reaches tropical storm/cyclone strength.
 - Above-average rainfall** Weekly total rainfall in the upper third of the historical range.
 - Below-average rainfall** Weekly total rainfall in the lower third of the historical range.
 - Above-normal temperatures** 7-day mean temperatures in the upper third of the historical range.
 - Below-normal temperatures** 7-day mean temperatures in the lower third of the historical range.

Product is updated once per week. The product targets broad scale conditions integrated over a 7-day period for US interests only. Consult your local responsible forecast agency.

