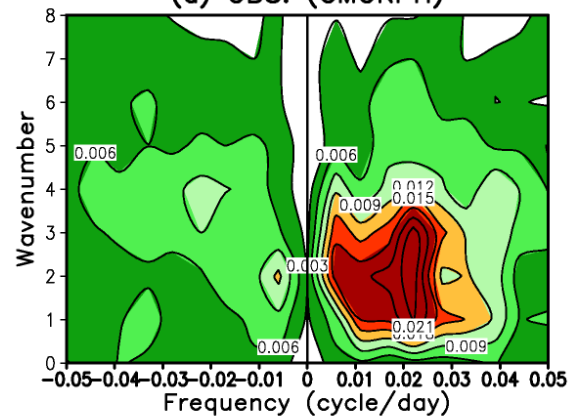
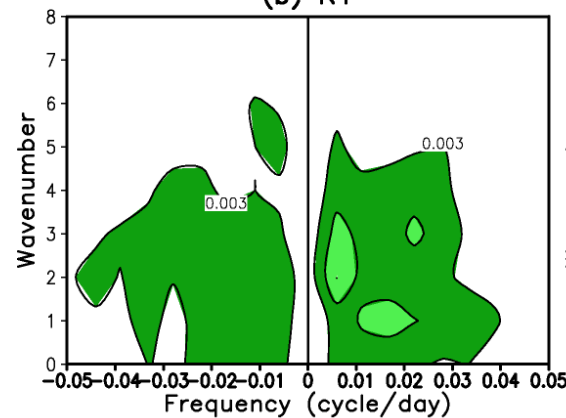


Wavenumber-Frequency Spectra of 10S-10N Prate (1998-2020)

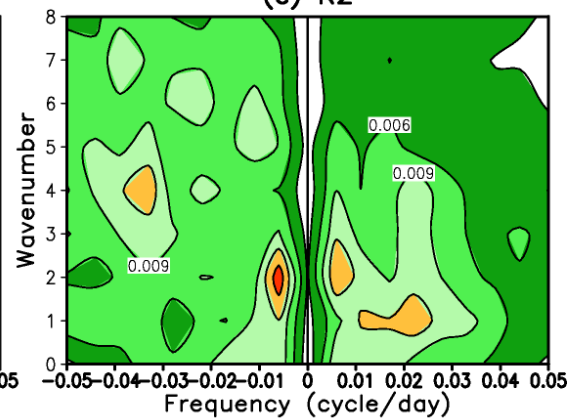
(a) OBS. (CMORPH)



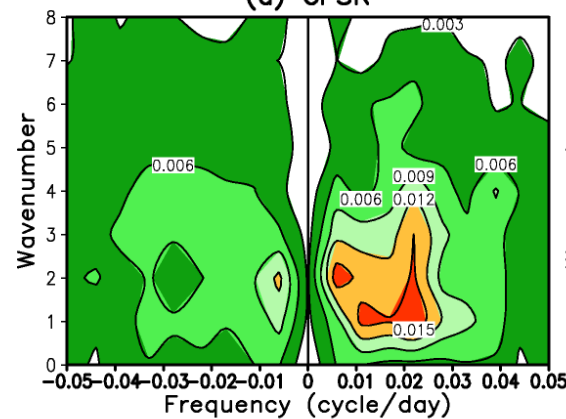
(b) R1



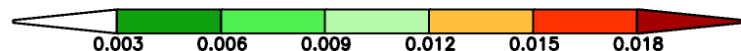
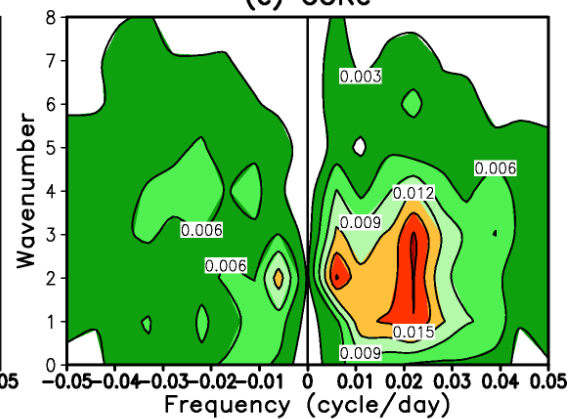
(c) R2



(d) CFSR

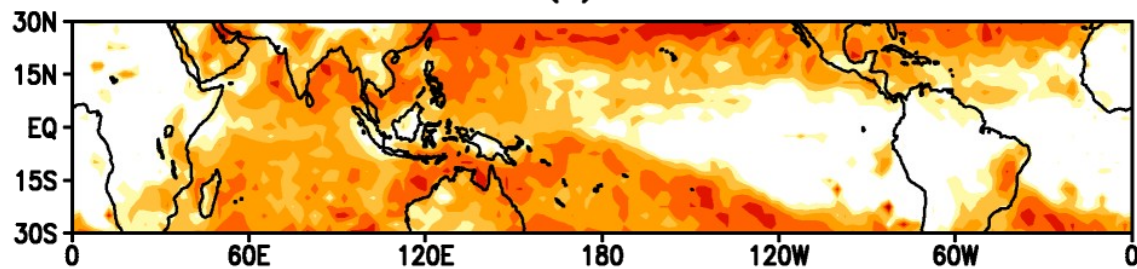


(e) CORE

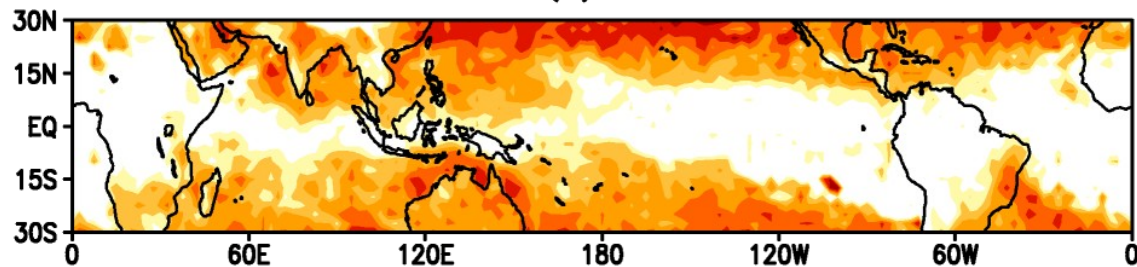


Correlation of intraseasonal Prate with CMORPH (Winter 1998–2020)

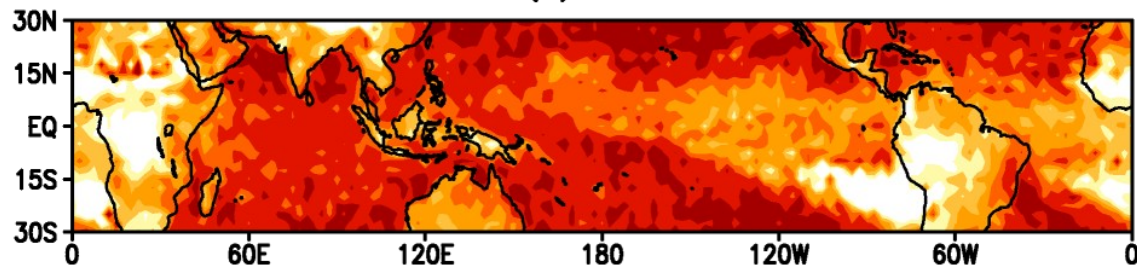
(a) R1



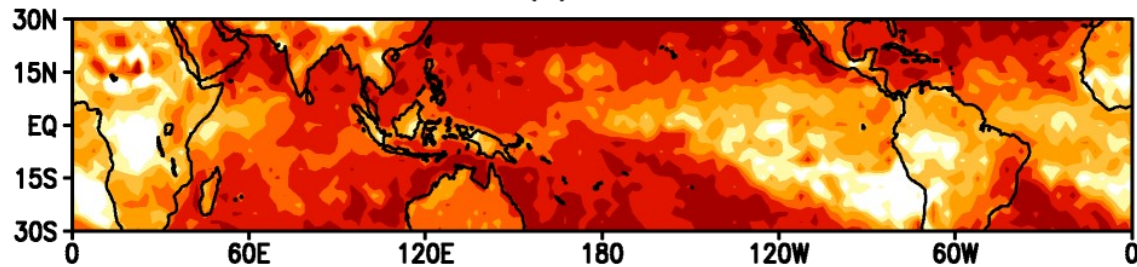
(b) R2



(c) CFSR

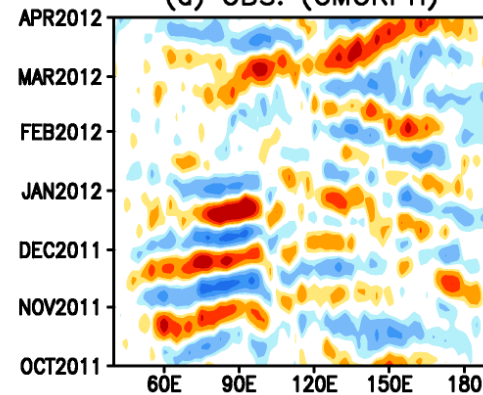


(d) CORe

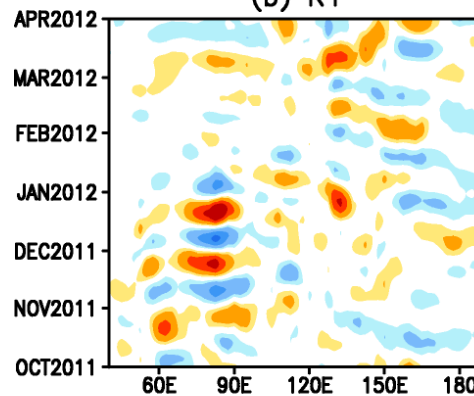


10S–10N average intraseasonal Prate during DYNAMO period

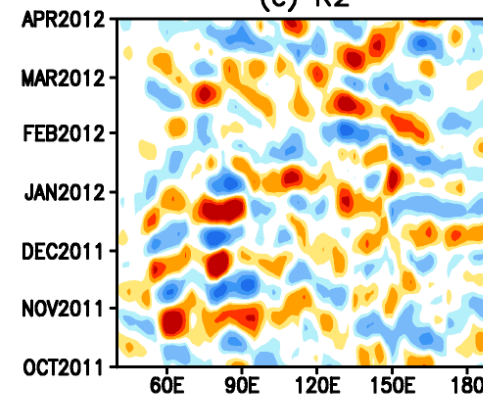
(a) OBS. (CMORPH)



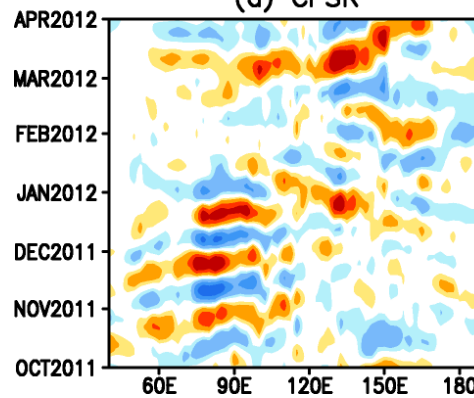
(b) R1



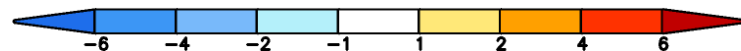
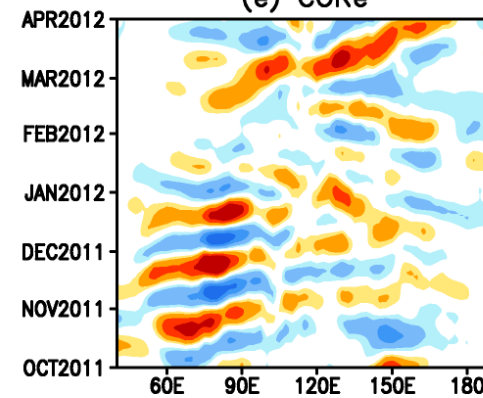
(c) R2



(d) CFSR

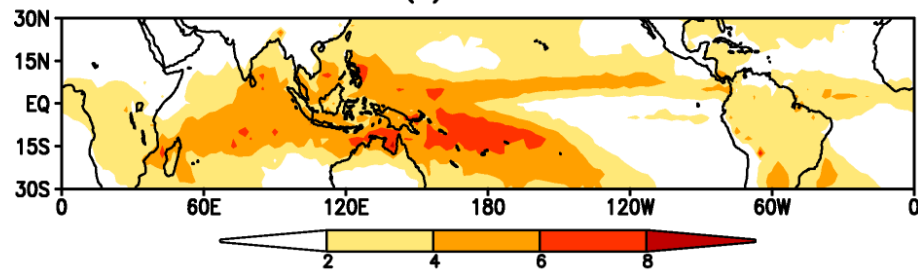


(e) CORe

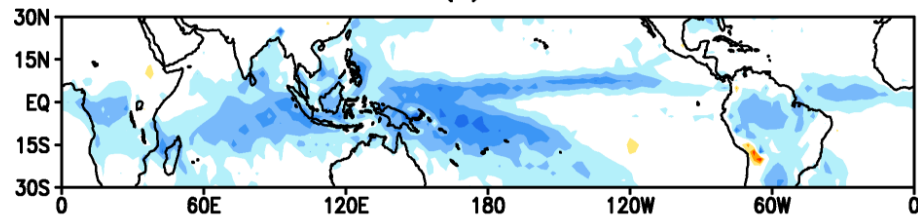


Standard deviation of intraseasonal Prate (Winter 1998–2020)

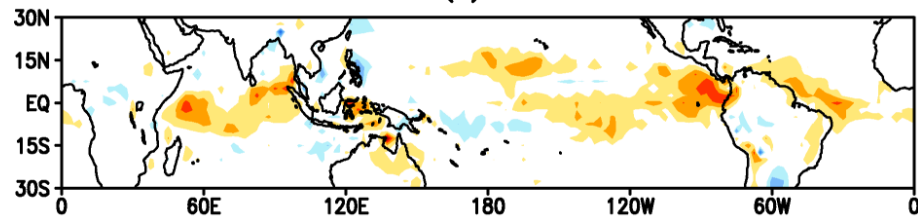
(a) CMORPH



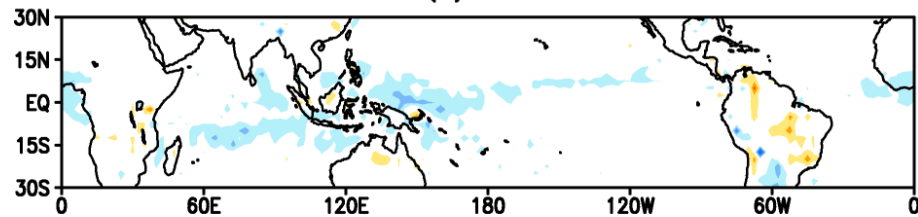
(b) R1



(c) R2



(d) CFSR



(e) CORE

