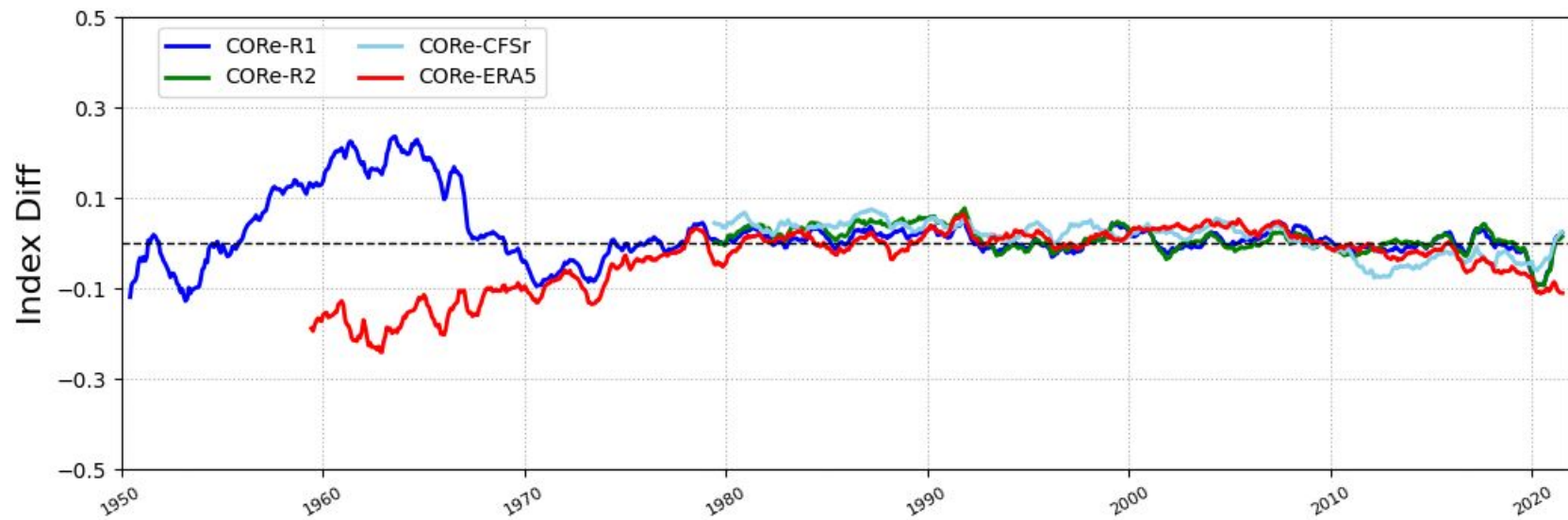
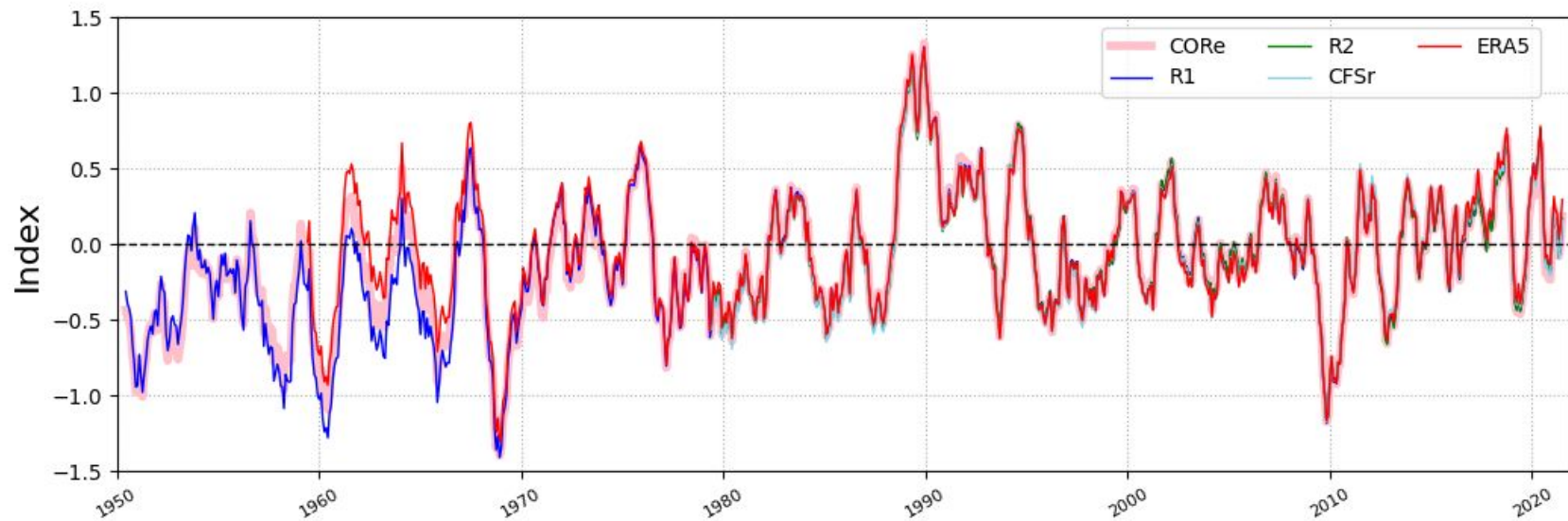


Teleconnection Patterns & Indices in CORE and the other Re-analyses

Analysis by Mingyue Chen

- AO (CPC website)
 - Index – project of 1000mb monthly anomalies to the loading pattern;
 - Loading pattern – leading EOF mode of 1000mb height monthly anomalies Jan1991-Dec2020, 20N-90N;
- AAO (CPC website)
 - Index – project of 700mb monthly anomalies to the loading pattern;
 - Loading pattern – leading EOF mode of 700mb height monthly anomalies Jan1991-Dec2020, 20S-90S;
- NAO (Stephenson et al. 2006)
 - The difference in MSLP between two boxes means:
southern box: 90W to 60E, 20N to 55N; northern box: 90W to 60E, 55N to 90N
- PNA (pointwise method following Wallace and Gutzler (1981))
 - $PNA = Z^*(15^\circ N-25^\circ N, 180-140^\circ W) - Z^*(40^\circ N-50^\circ N, 180-140^\circ W)$
 $+ Z^*(45^\circ N-60^\circ N, 125^\circ W-105^\circ W) - Z^*(25^\circ N-35^\circ N, 90^\circ W-70^\circ W)$
 - Z^* =500mb height monthly anomalies;
- Monthly anomalies based on 1991-2020 climatology
- Re-analyses: CORE, R1, R2, CFSr, & ERA5

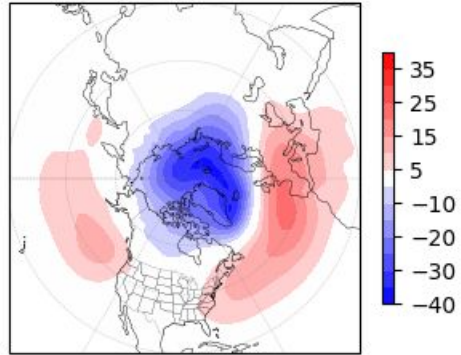
AO Standardized Monthly Index (11-month-running-mean)



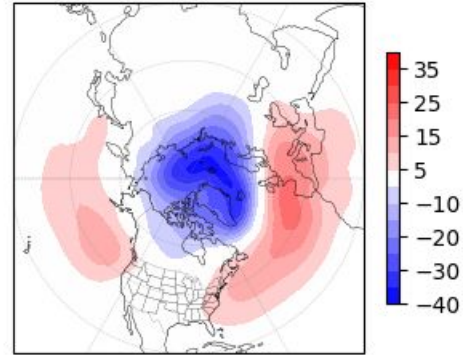
AO Loading Pattern, Leading EOF, 1991-2020

Regression map of 1000mb height(m)

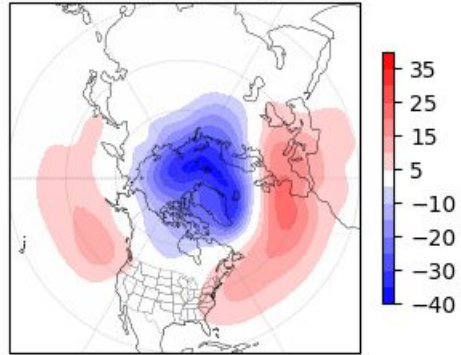
CORe(19.1%)



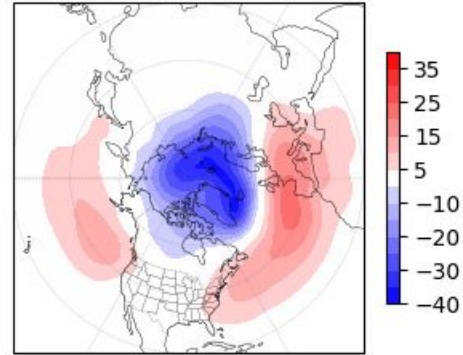
R1(19.0%)



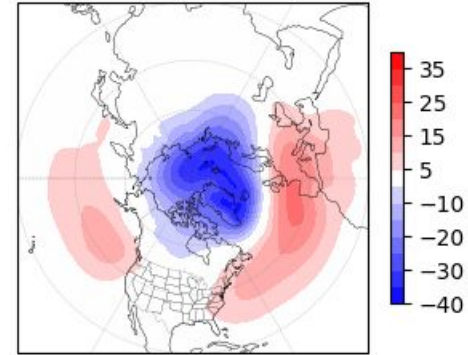
R2(19.1%)



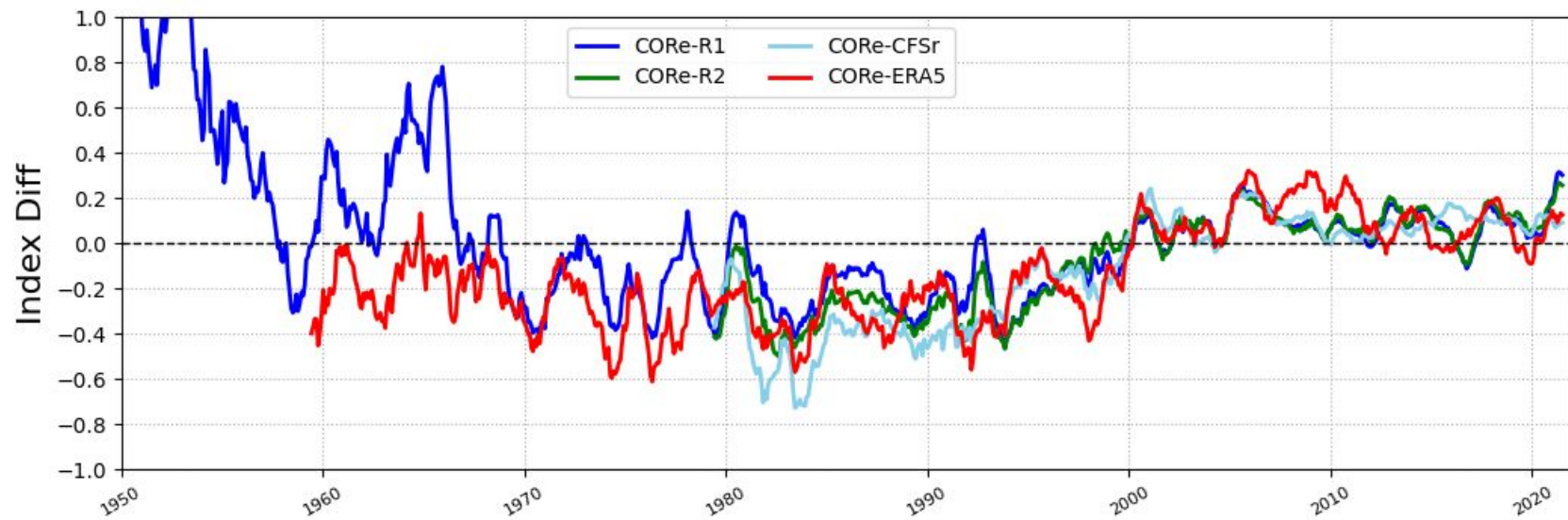
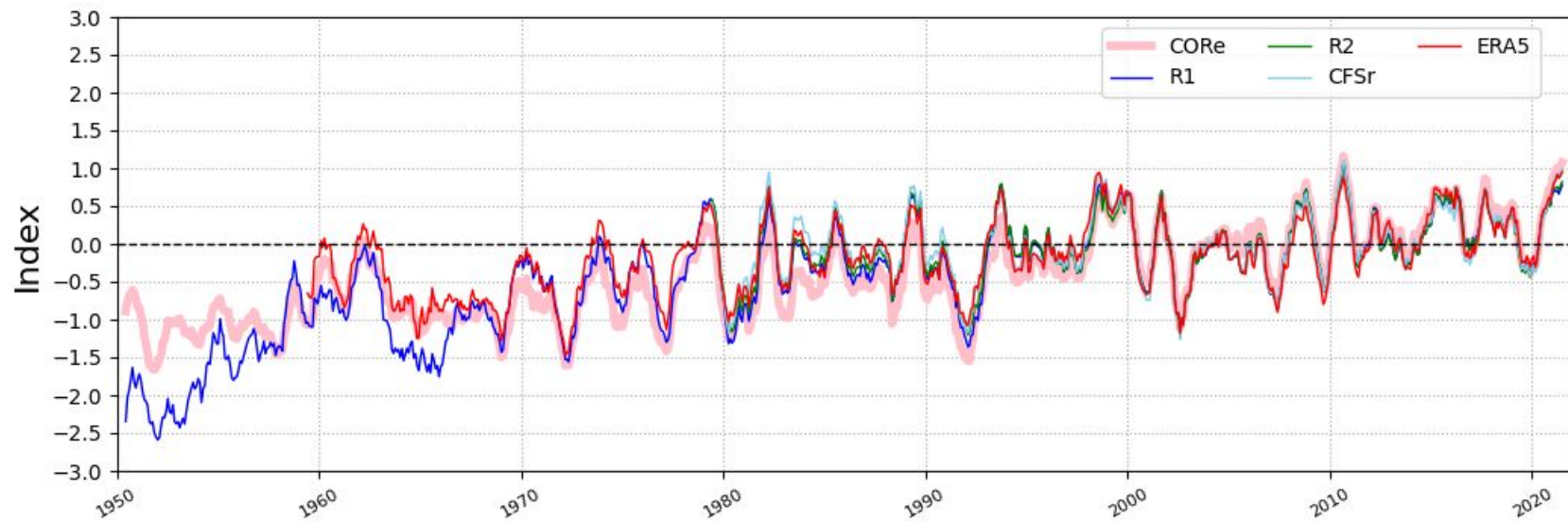
CFSr(19.1%)



ERA5(19.4%)

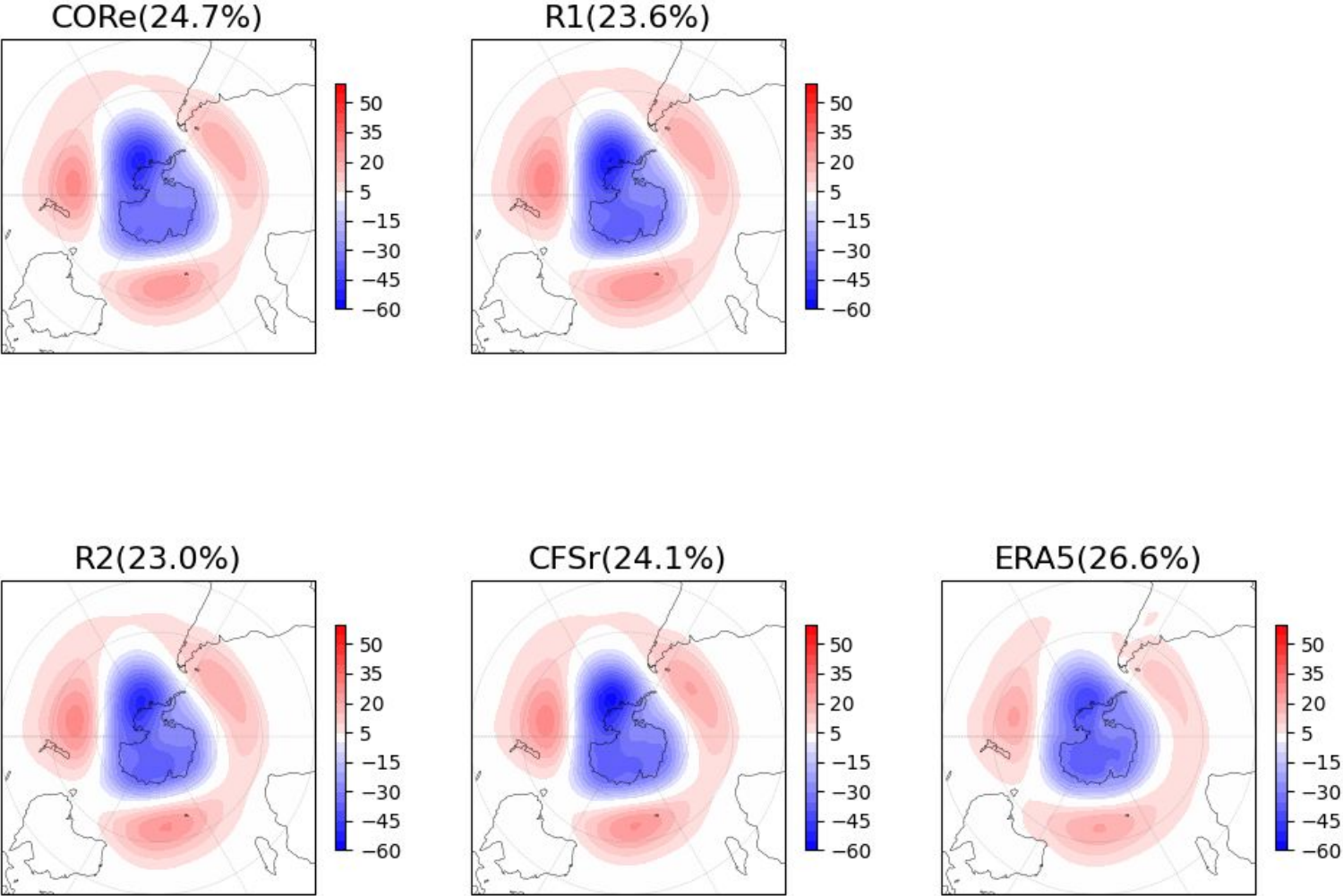


AAO Standardized Monthly Index (11-month-running-mean)

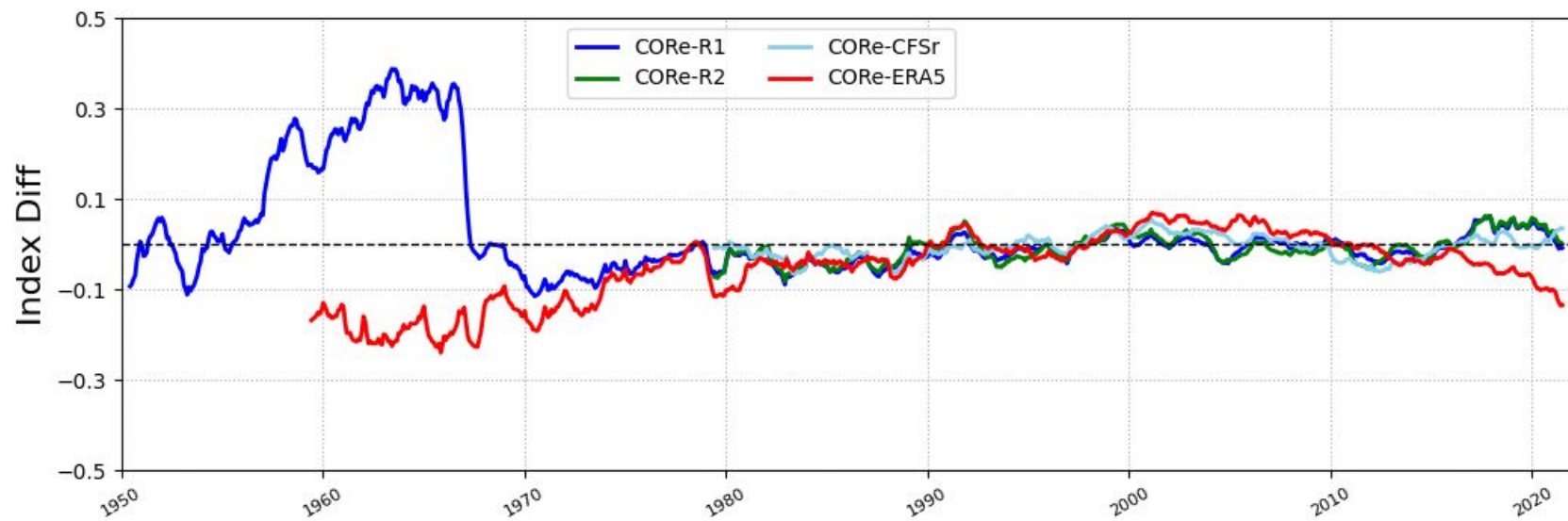
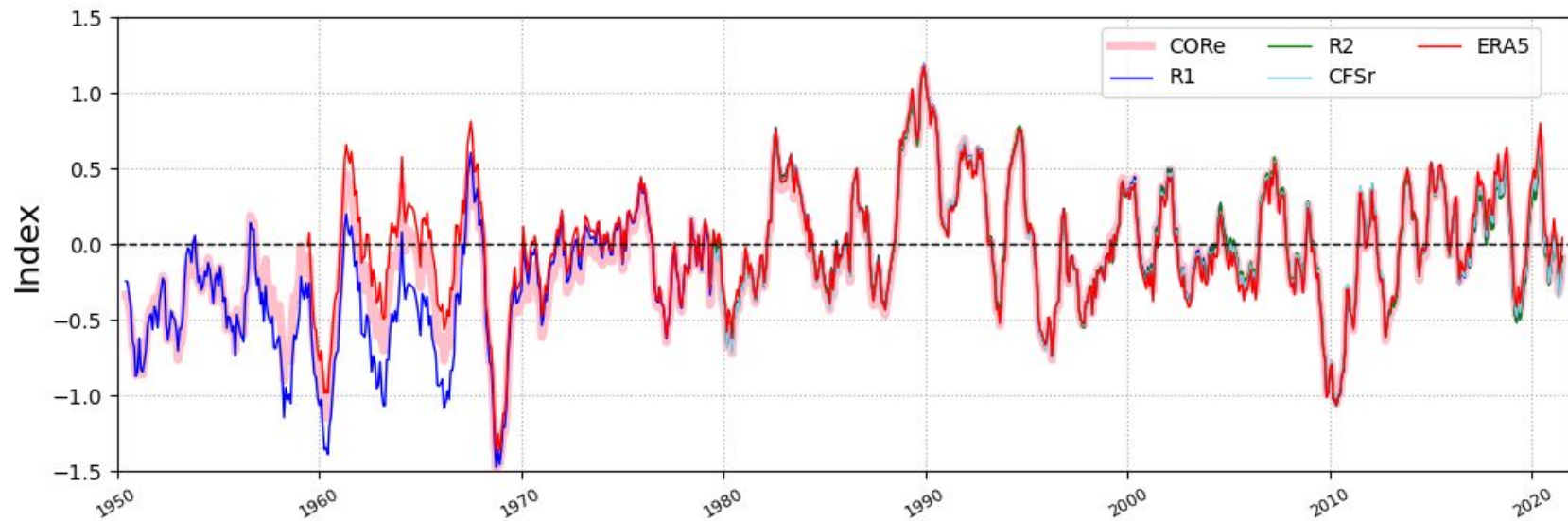


AAO Loading Pattern, Leading EOF, 1991-2020

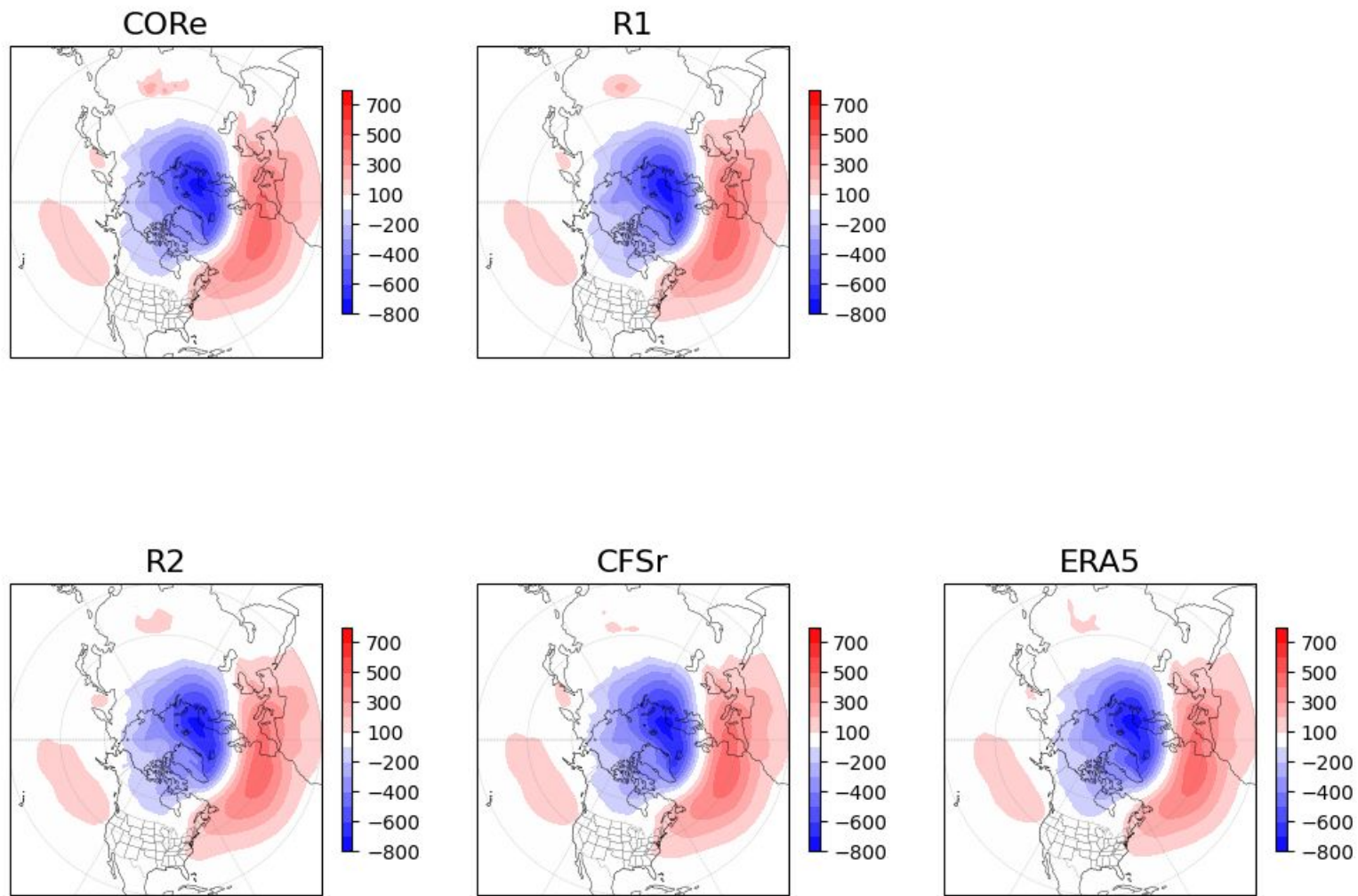
Regression map of 700mb height(m)



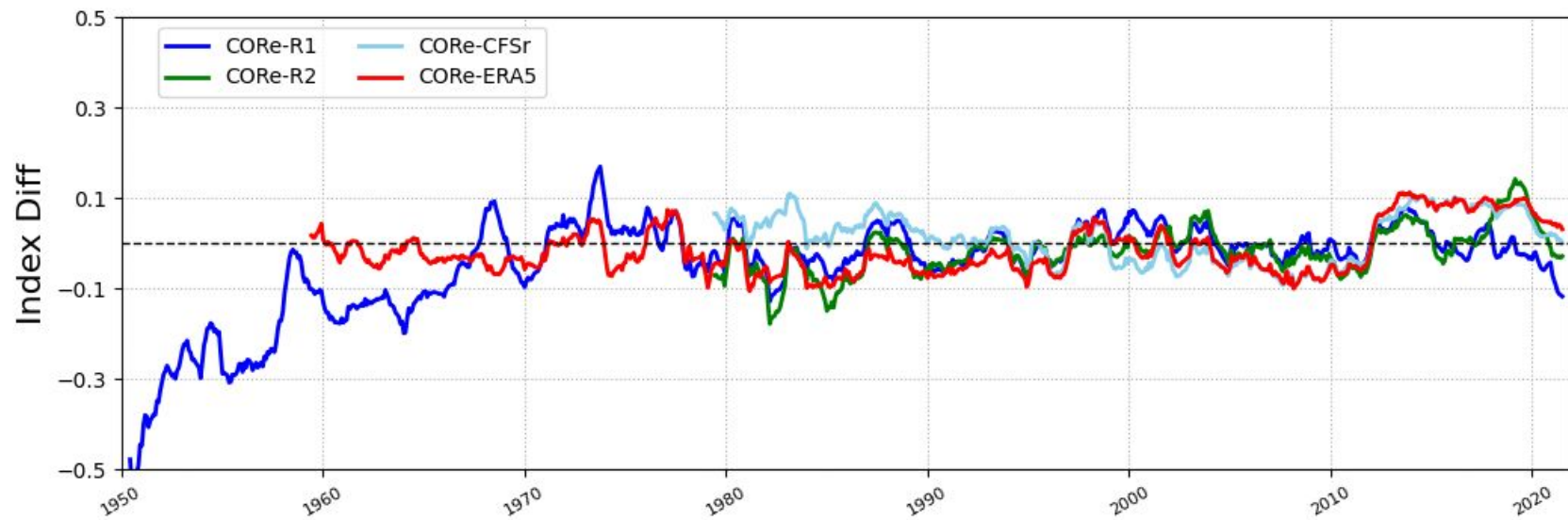
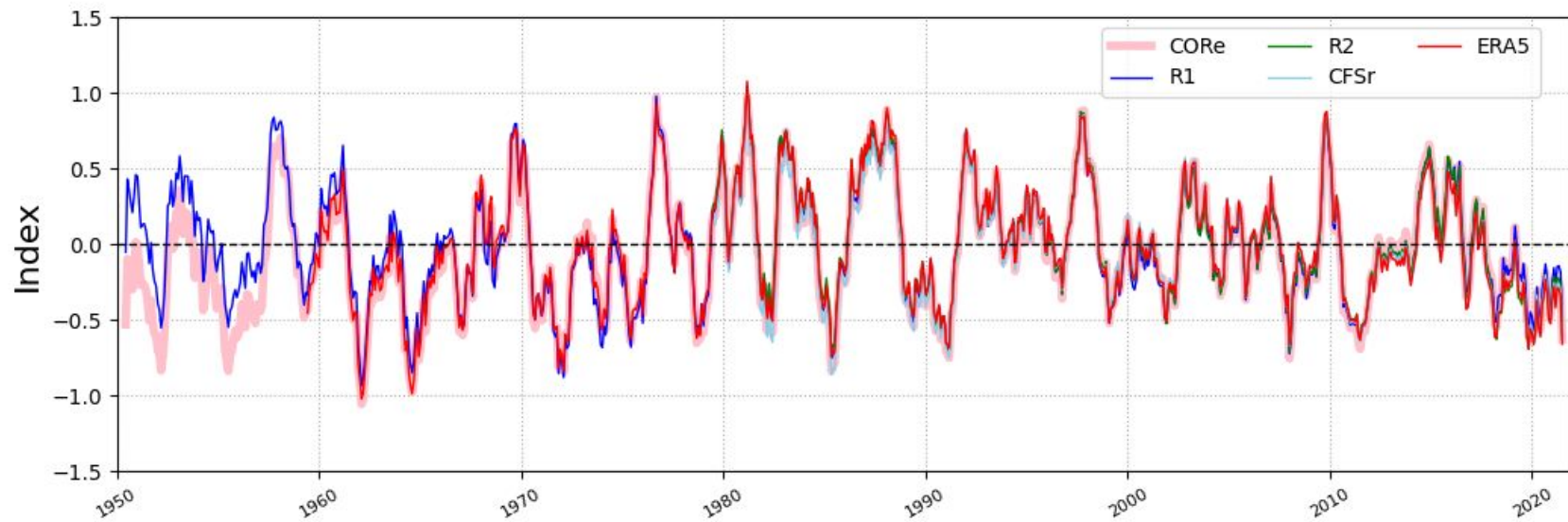
NAO Standardized Monthly Index (11-month-running-mean)



DJF(1991-2020) Regresion map of [NAO index, MSLP] (Pa)



PNA Standardized Monthly Index (11-month-running-mean)



DJF(1991-2020) Regression map of [PNA index, 500mb height] (m)

