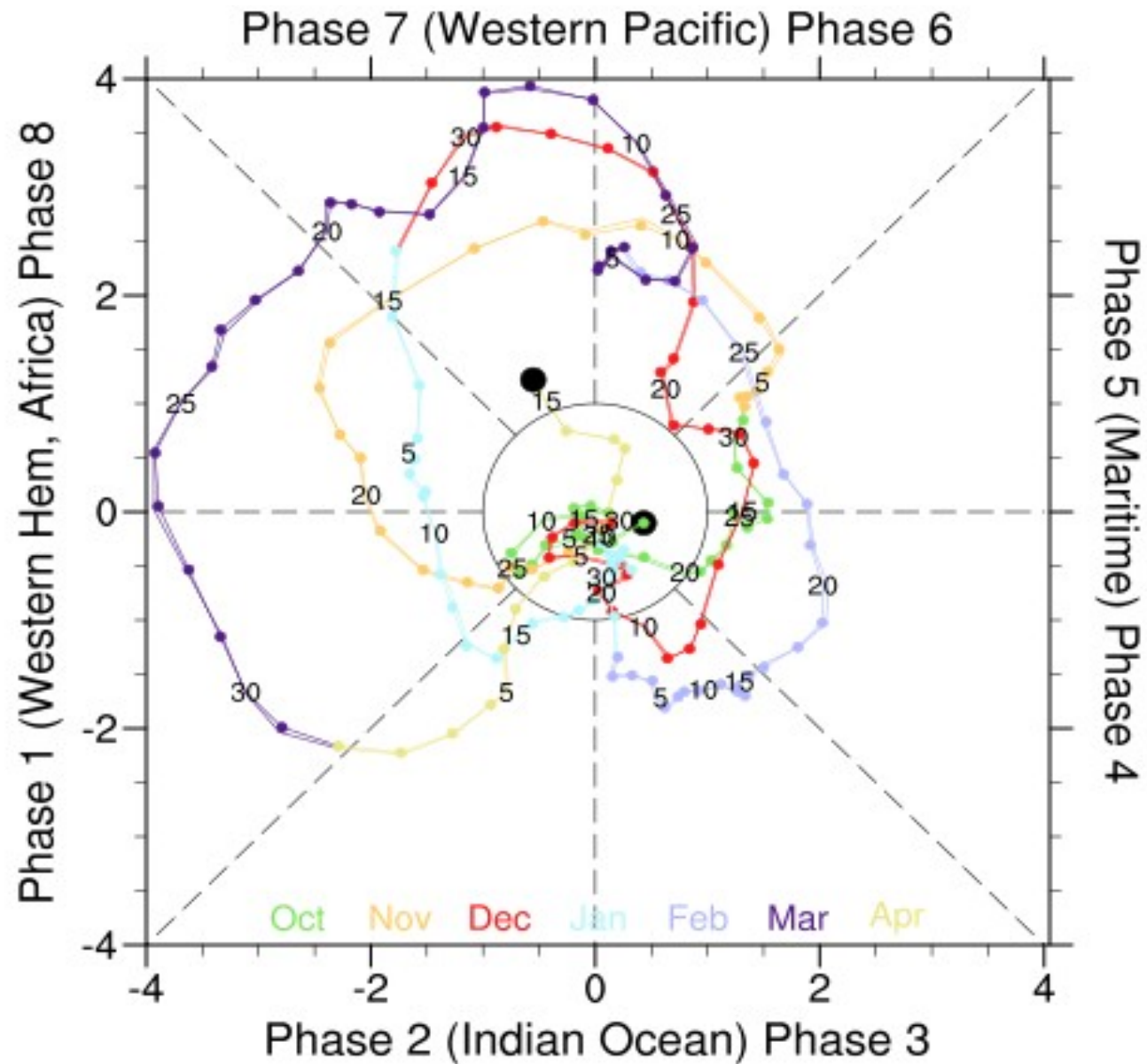


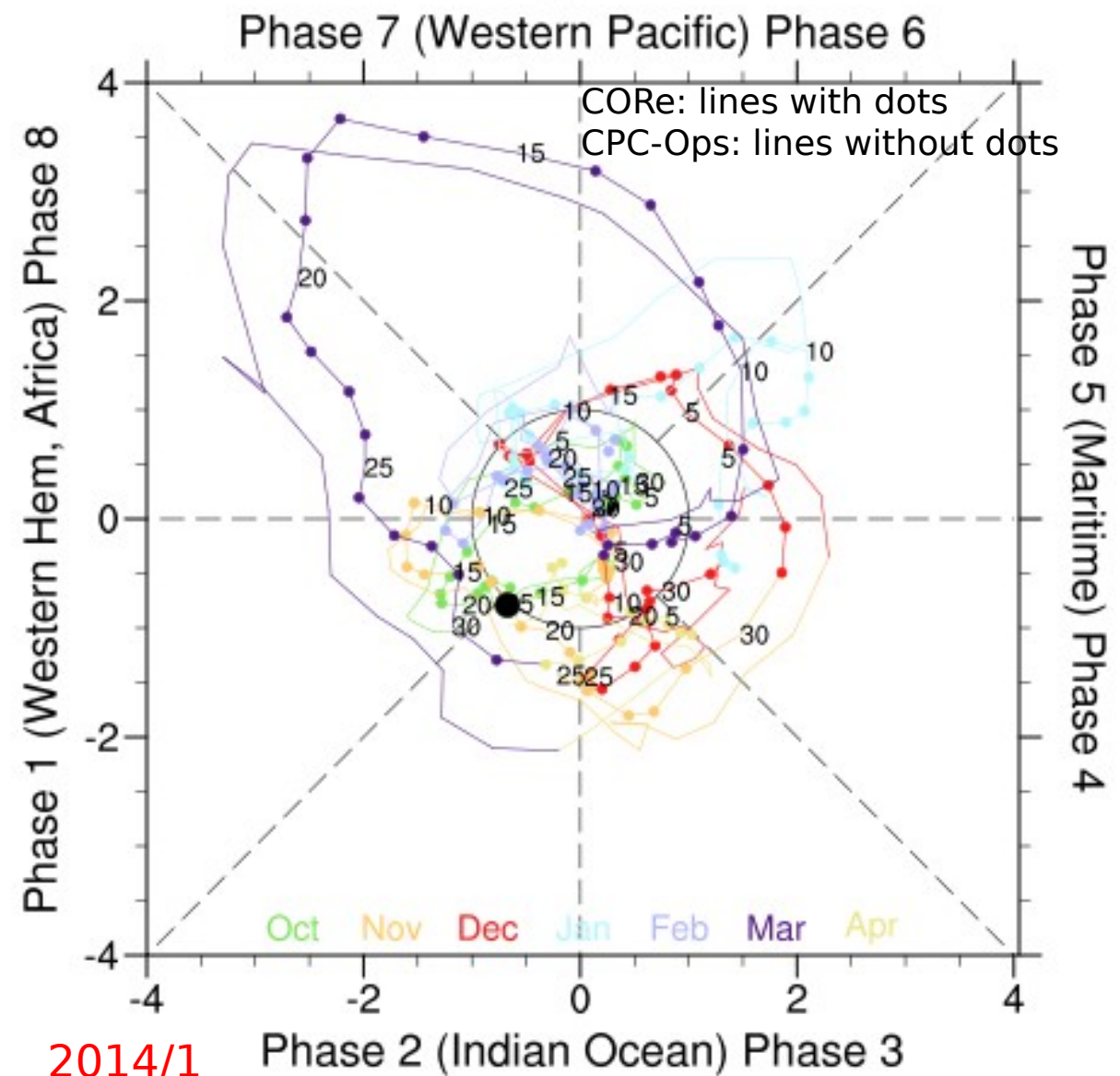
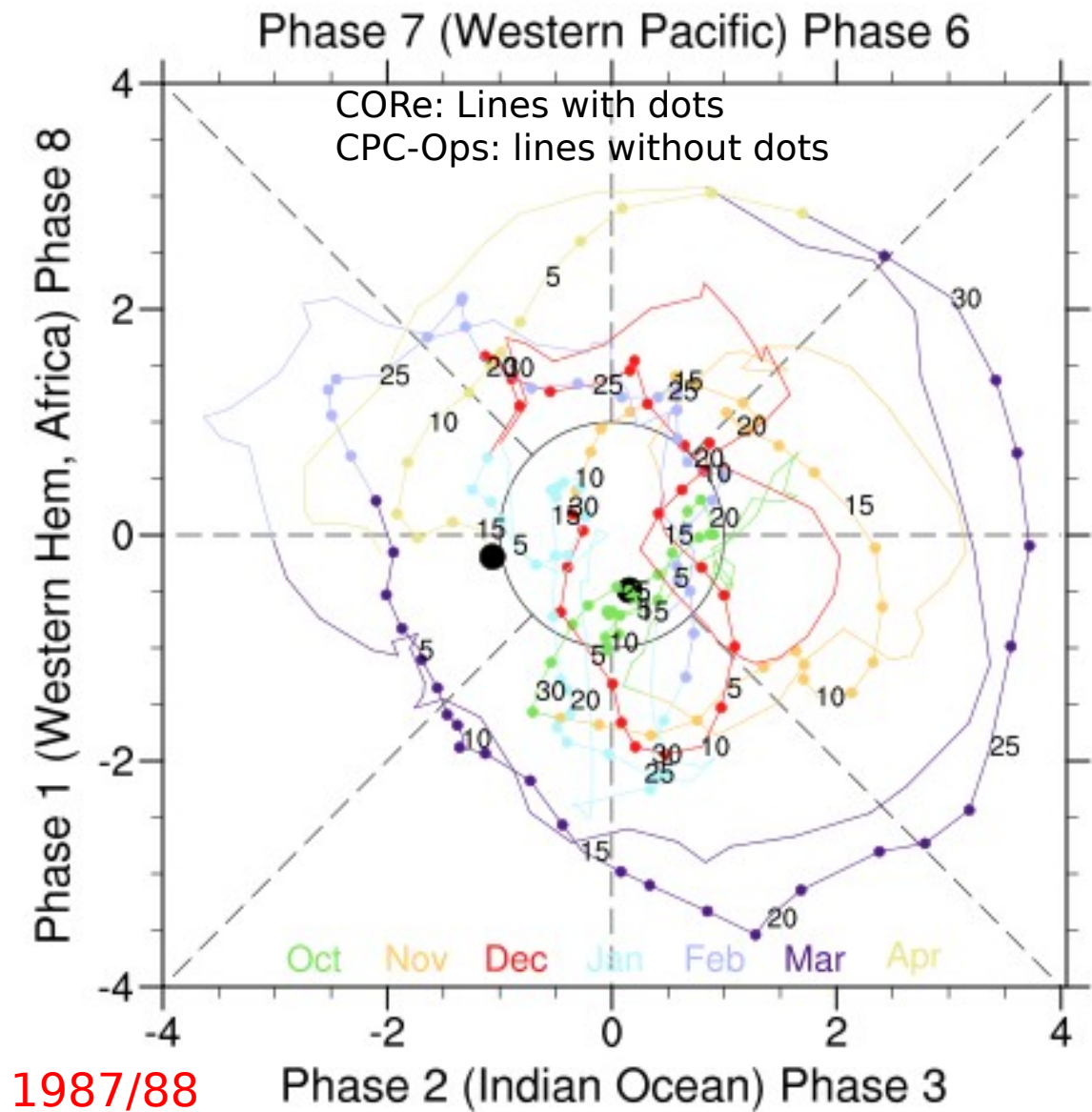
Comparison of MJO RMM indices in CORe and CPC- Ops

Zewdu & Nick
2 May 2024

Comparison of CORE MJO with smooth/non-smooth climatologies for 1996-1997 events



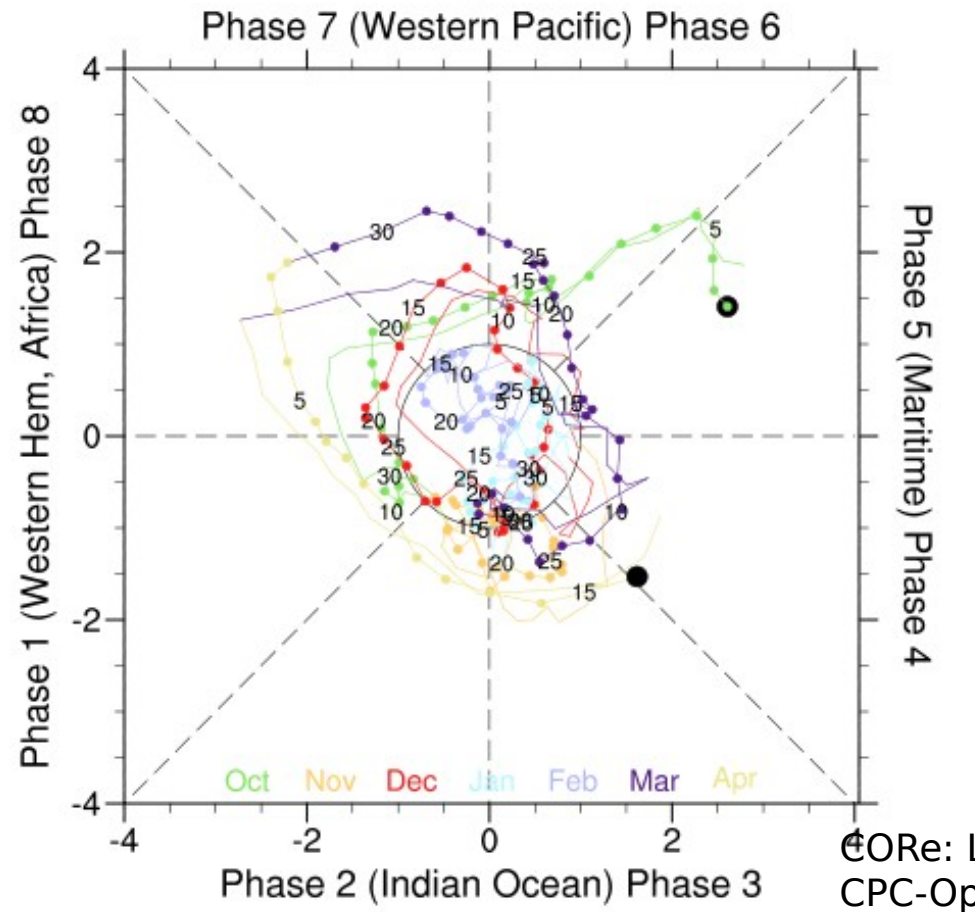
Comparison of CORE and CPC operational RMM Indices for 1987/88 and 2014/15 (Oct-April)



2014/15

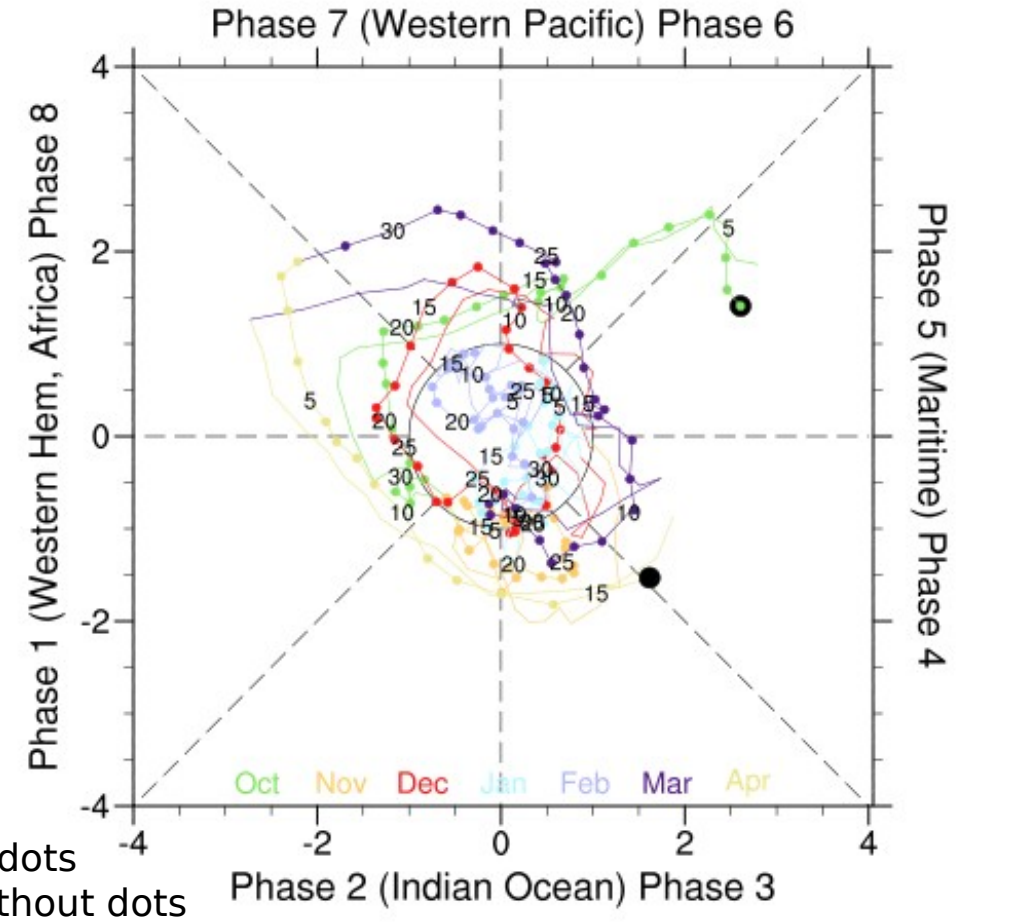
Comparison of CORE and CPC operational RMM Indices for 1979-2022 (Oct-April)

MJO for CORE & CPC ops for 19791001-19800415



Smooth Clim

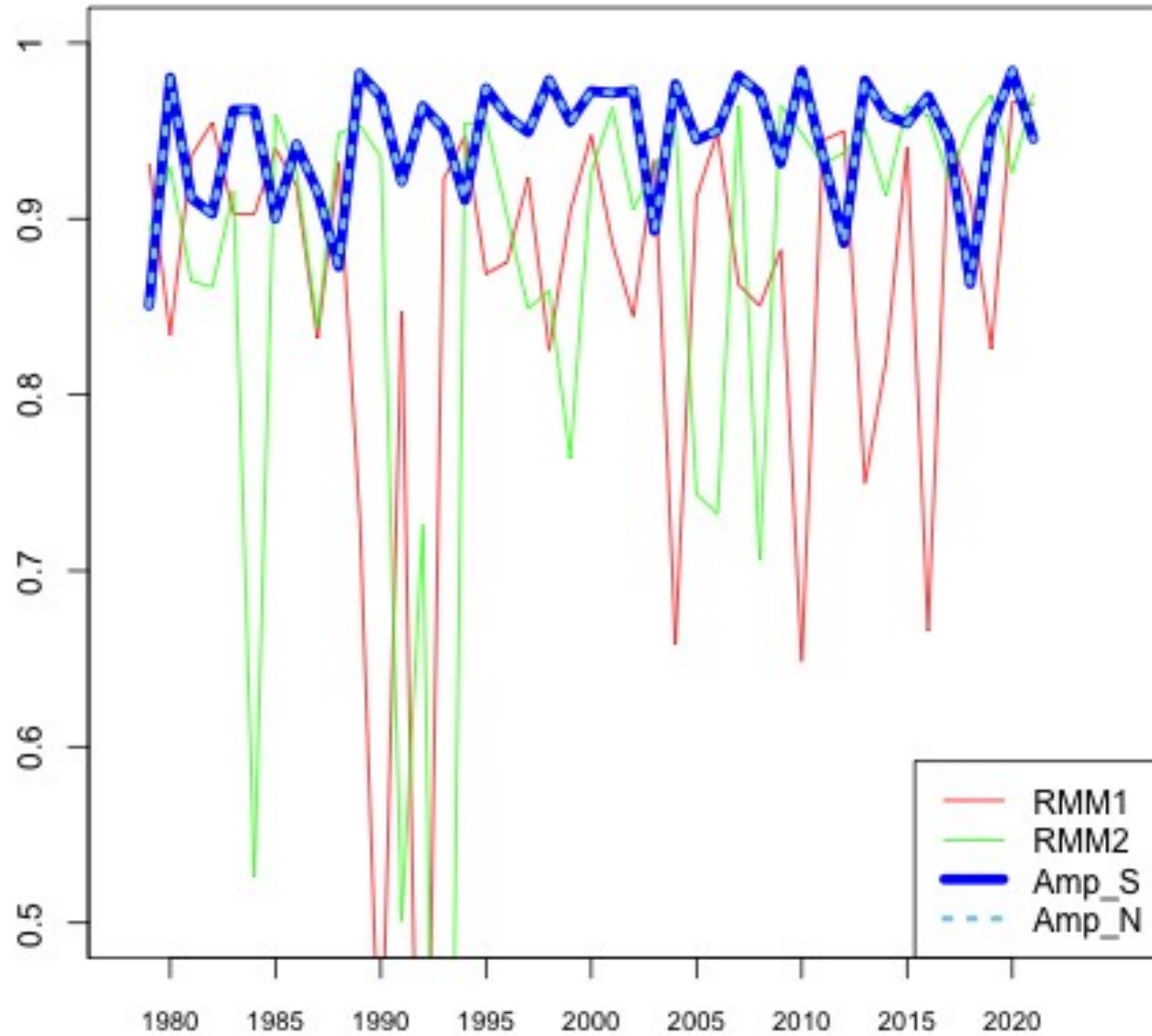
MJO for CORE & CPC ops for 19791001-19800415



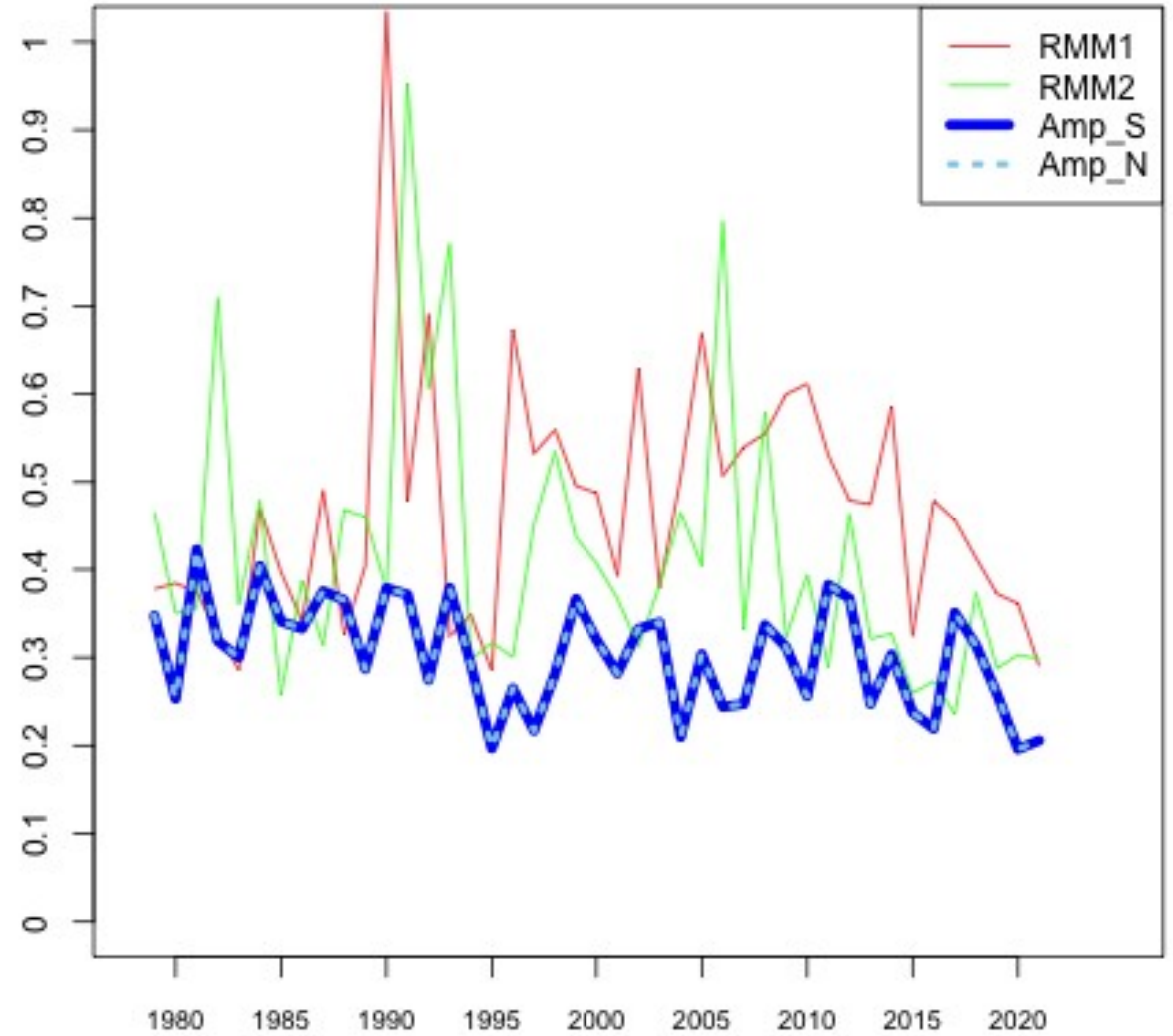
Non-smooth Clim

Yearly (Oct-Apr) Correlation and RMSE between CORE & CPC Ops

Correlation



RMSE



Summary

- Little differences when smoothed and non-smoothed climatologies were used to compute RMM indices.
- MJO amplitude differences are hardly noticeable between the CORE and CPC operational data between October and April (of the following year) for 1979-2022.
- The median correlation between CORE & CPC Ops is 0.95 for 1979-2022. Median RMSE is 0.3σ .
- Several missing or repeated daily data in CPC