

# Evaluation of a SubX Multimodel Ensemble to predict an intraseasonal index for South America based on Outgoing Long Wave Radiation

**Mariano S. Alvarez\*** & Carolina Vera  
CIMA - UBA/CONICET

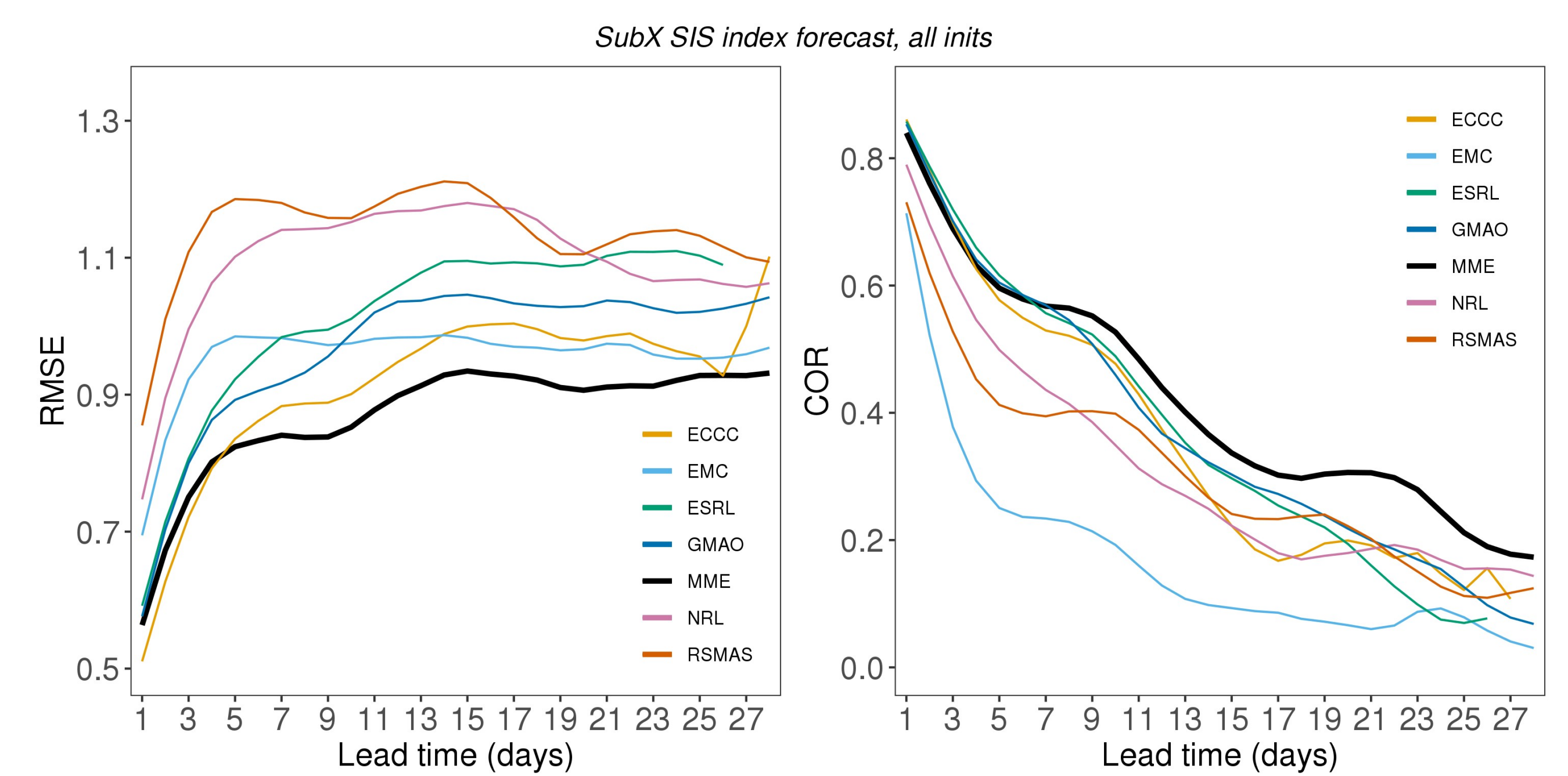
**Background:** the Seasonal-IntraSeasonal (SIS) pattern is the leading EOF of the 10-90-day filtered OLR anomalies in eastern South America. In the extended **austral summer** it is a dipole, and its activity shows the organization of regional and hemispheric anomalies.

## R2O: adapting the SIS index from research to operations

- R:** SIS index = PC1 of 10-90 days filtered OLR
- O:** 1) Compute OLR anomalies, 2) remove the mean of the last 40 days, 3) apply two consecutive 5-point running mean, 4) project onto the SIS pattern -> SIS index

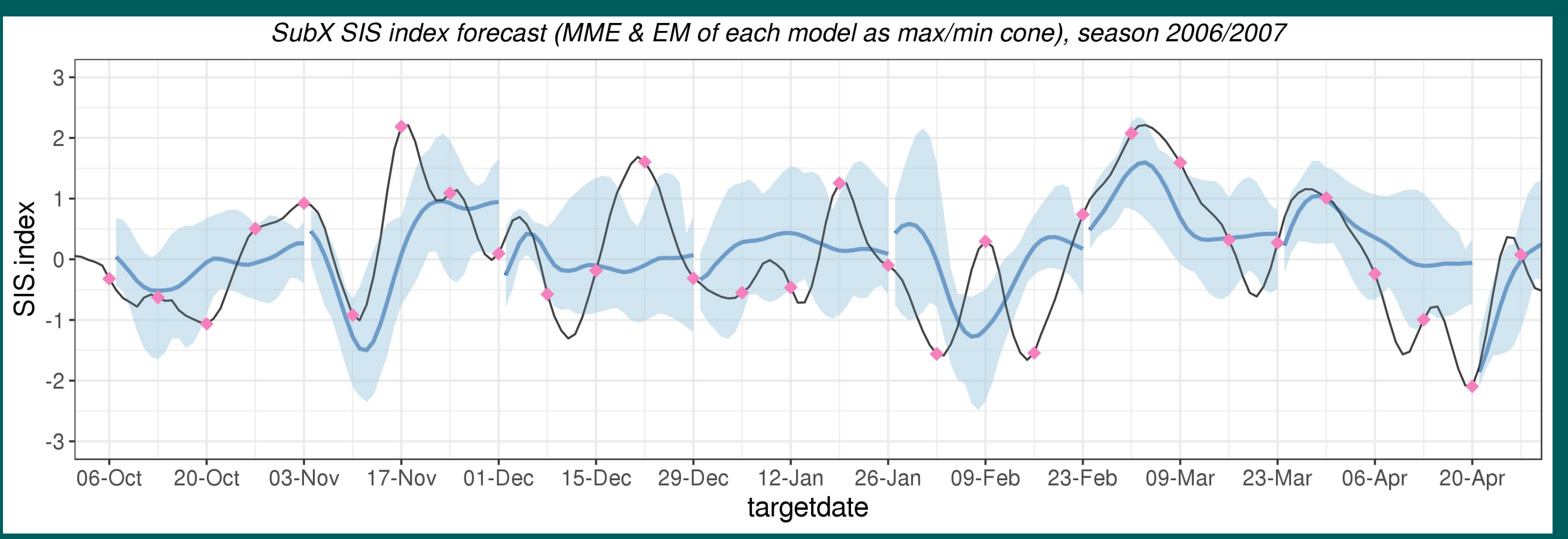
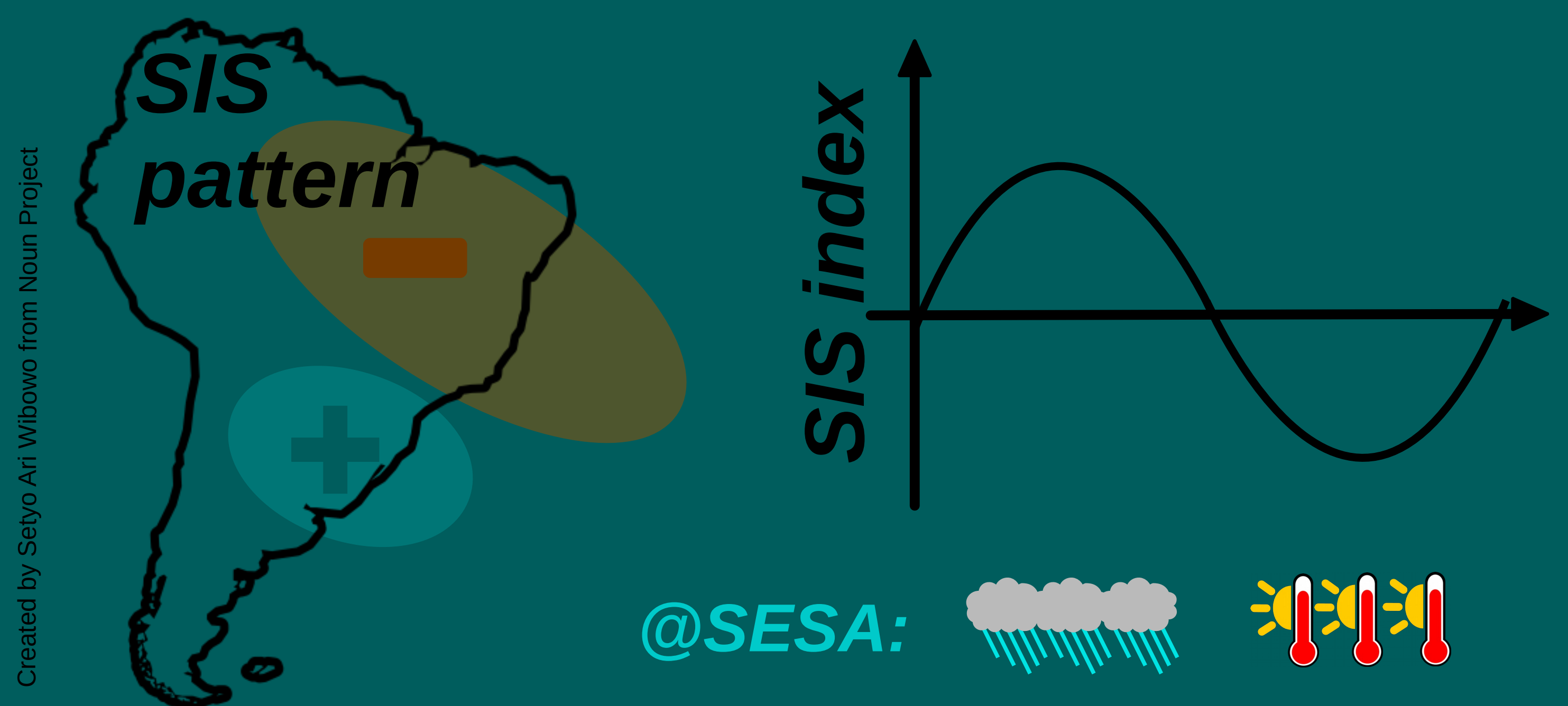
**SubX Multimodel ensemble (MME):** obtained by averaging all available initializations between Saturdays and Fridays. Hindcasts are used simulating real-time conditions. ECCC, EMC, ESRL, GMAO, NRL and RSMAS models.

**SIS index forecast:** for each model and MME, SubX daily OLR anomalies respect lead-dependent climatology are joined with low-frequency-filtered observed OLR anomalies, then smoothed and projected onto the SIS pattern.

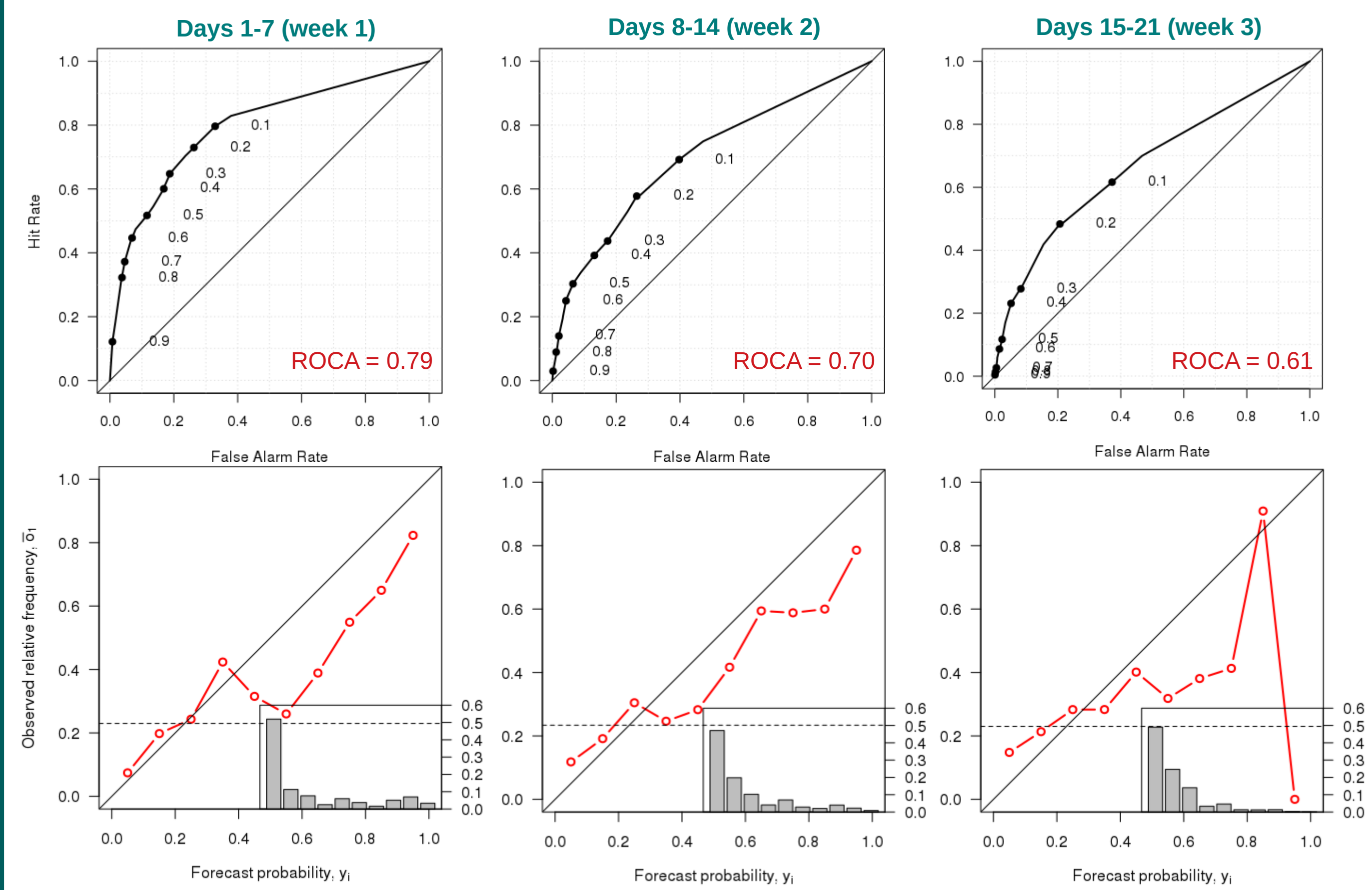


Correlation between observed & MME-SubX SIS index drops below 0.5 and after **10 days**.

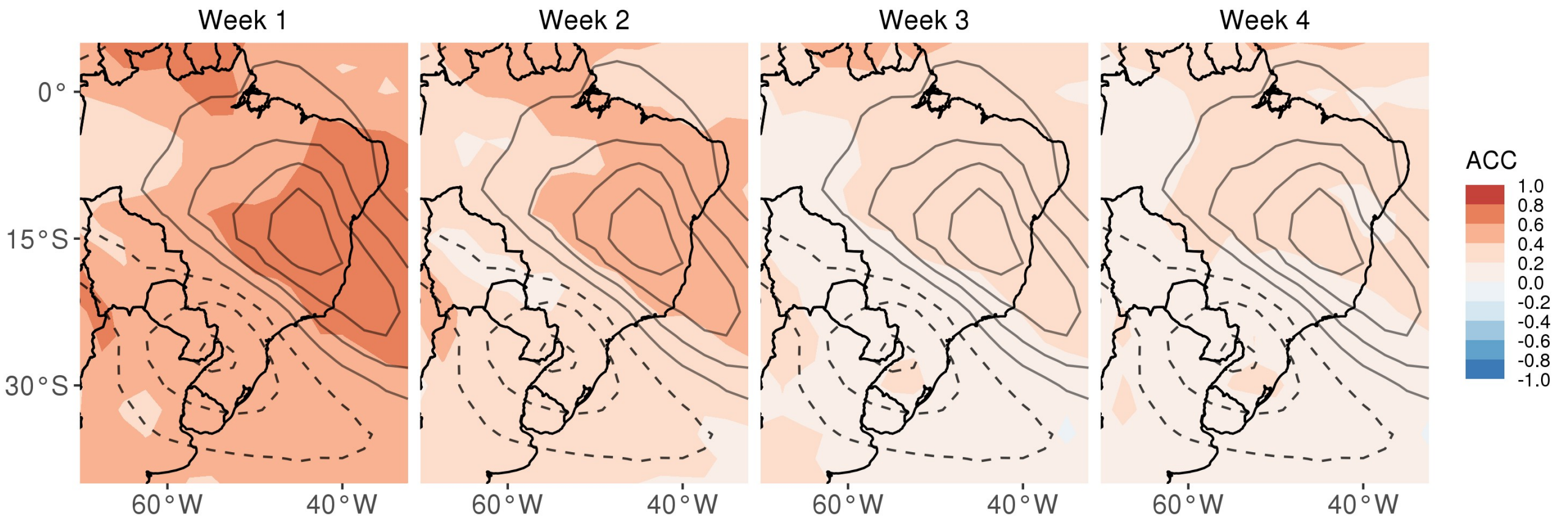
# SubX multimodel ensemble shows promising results for predicting an intraseasonal index for South America



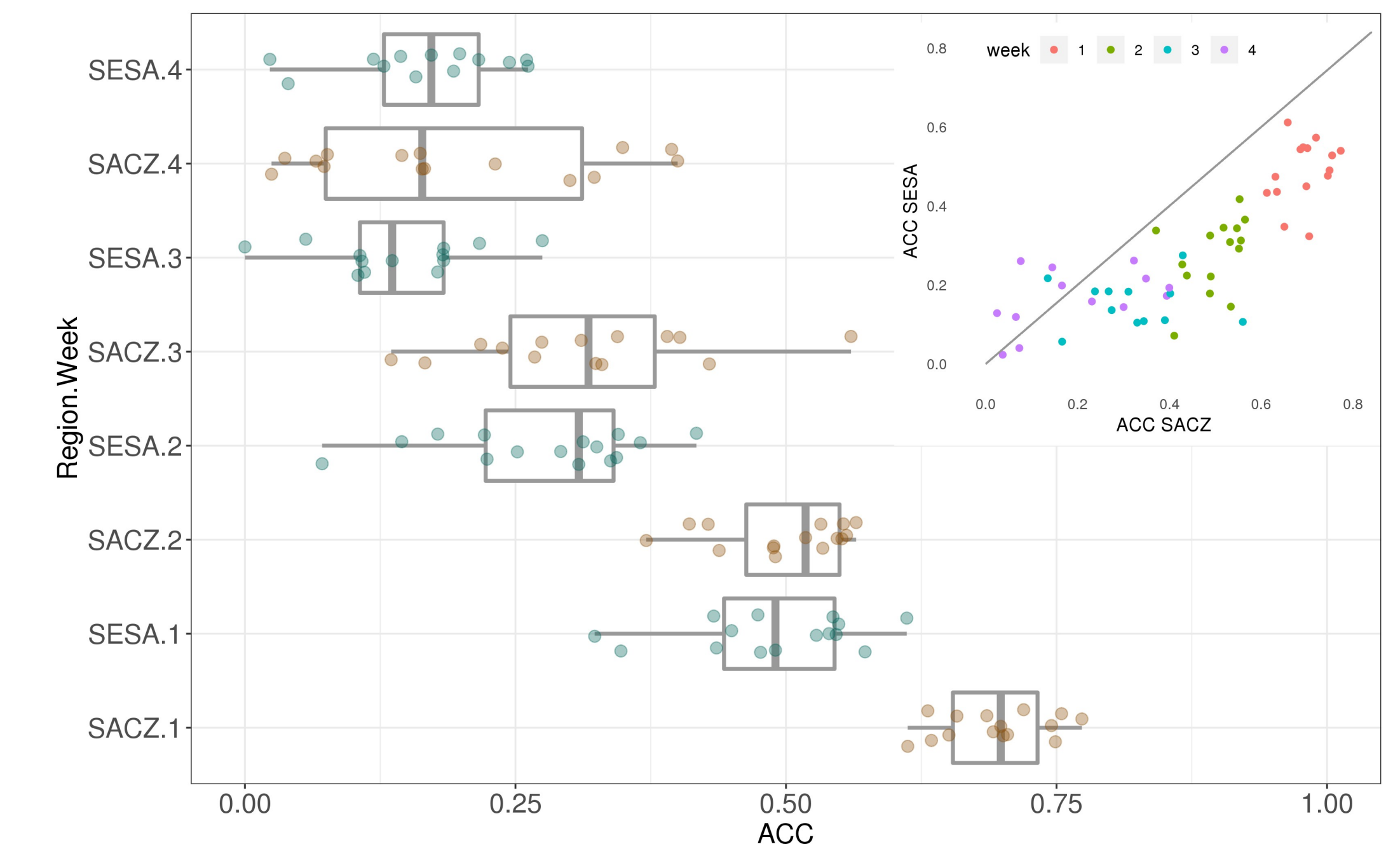
Discrimination of SubX-MME SIS index for SIS>0.75 days **decreases sharply** by week.



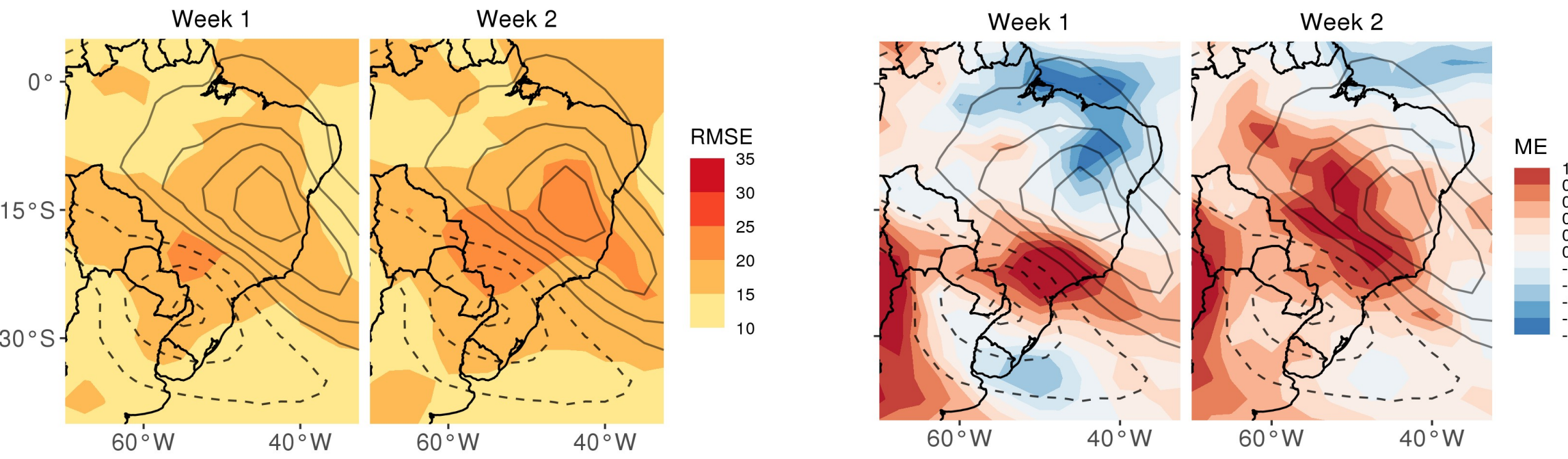
Weekly OLR' analysis shows that SACZ is the main source of predictability **up to week 2**.



For each summer season, **SACZ shows higher ACC than SESA** region for weeks 1 & 2.



MME larger amplitude **errors** in the SACZ and larger **bias** between SIS action centers.



Acknowledgements: SubX project, IRI Data Library, CPDW, CONICET/UBA, Elio Campitelli & metR R-package.