

A Modernized Geographic Approach to S2S Forecasting

Dan Pisut

Esri Living Atlas

dpisut@esri.com



GIS Technology Is Advancing Rapidly

Integrating and Leveraging Many Innovations



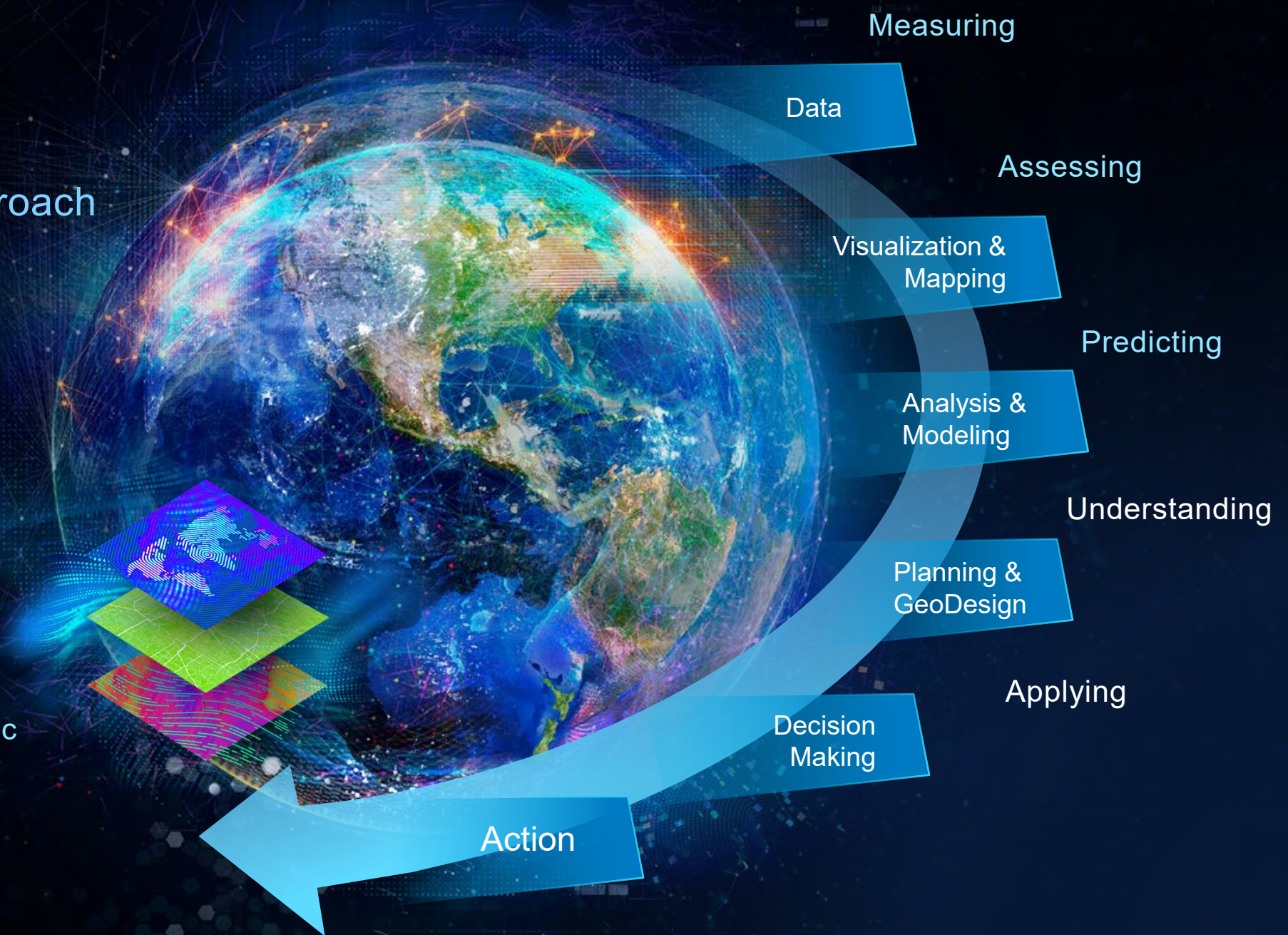
Helping Us Scale Up Our Collective Efforts

GIS

Enables The
Geographic Approach

Providing a Process
and Framework . . .

. . . For Applying Geographic
Knowledge Widely



Measuring

Data

Assessing

Visualization &
Mapping

Predicting

Analysis &
Modeling

Understanding

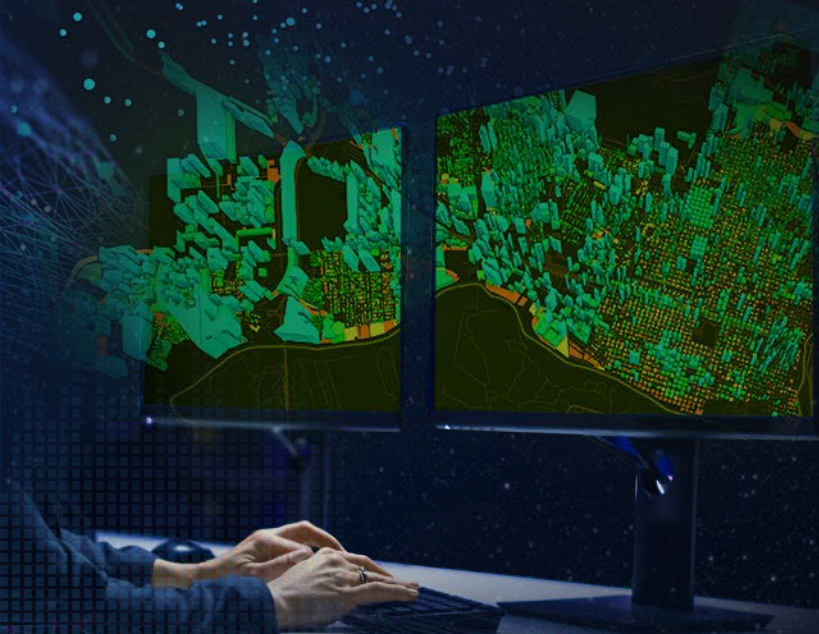
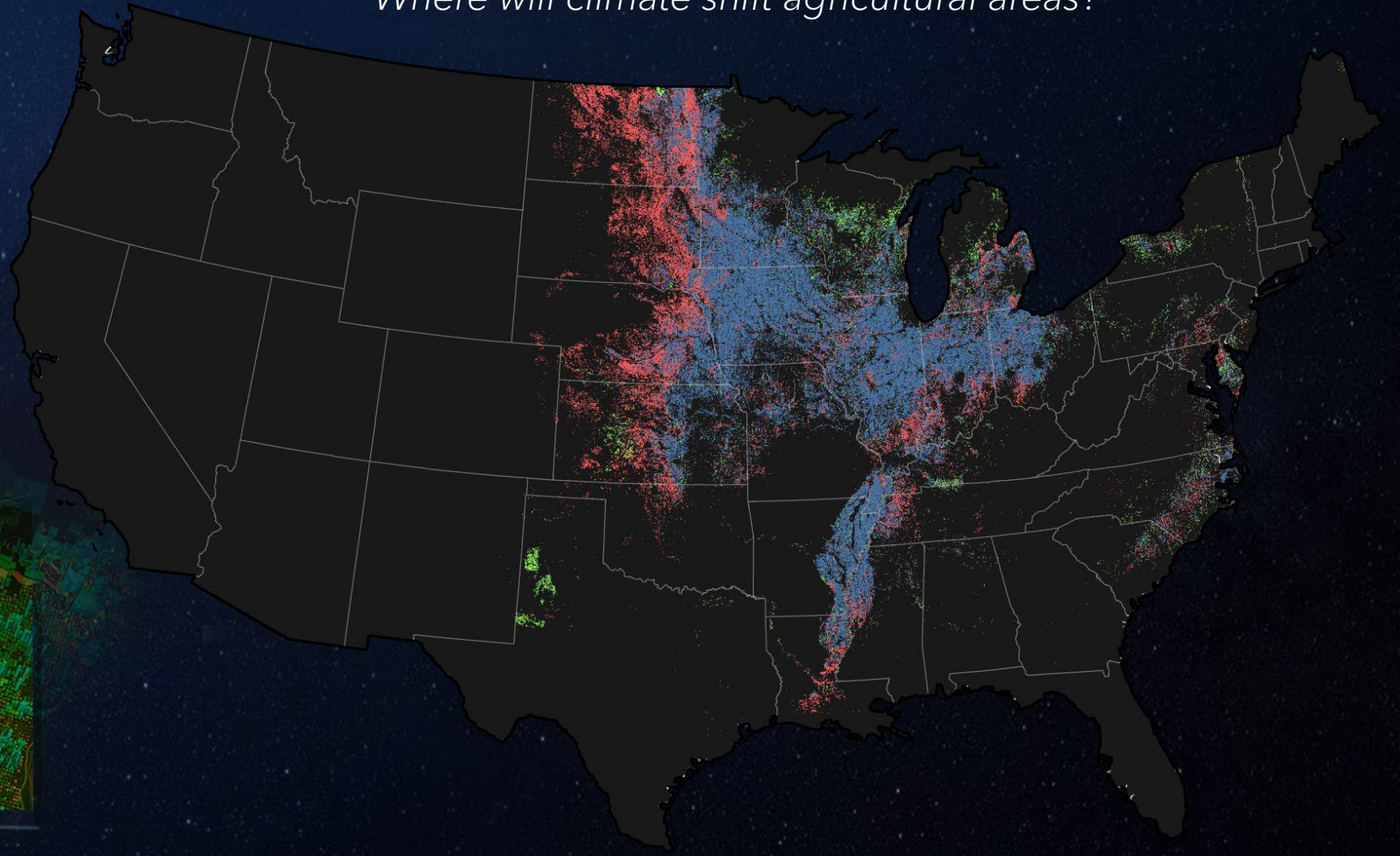
Planning &
GeoDesign

Applying

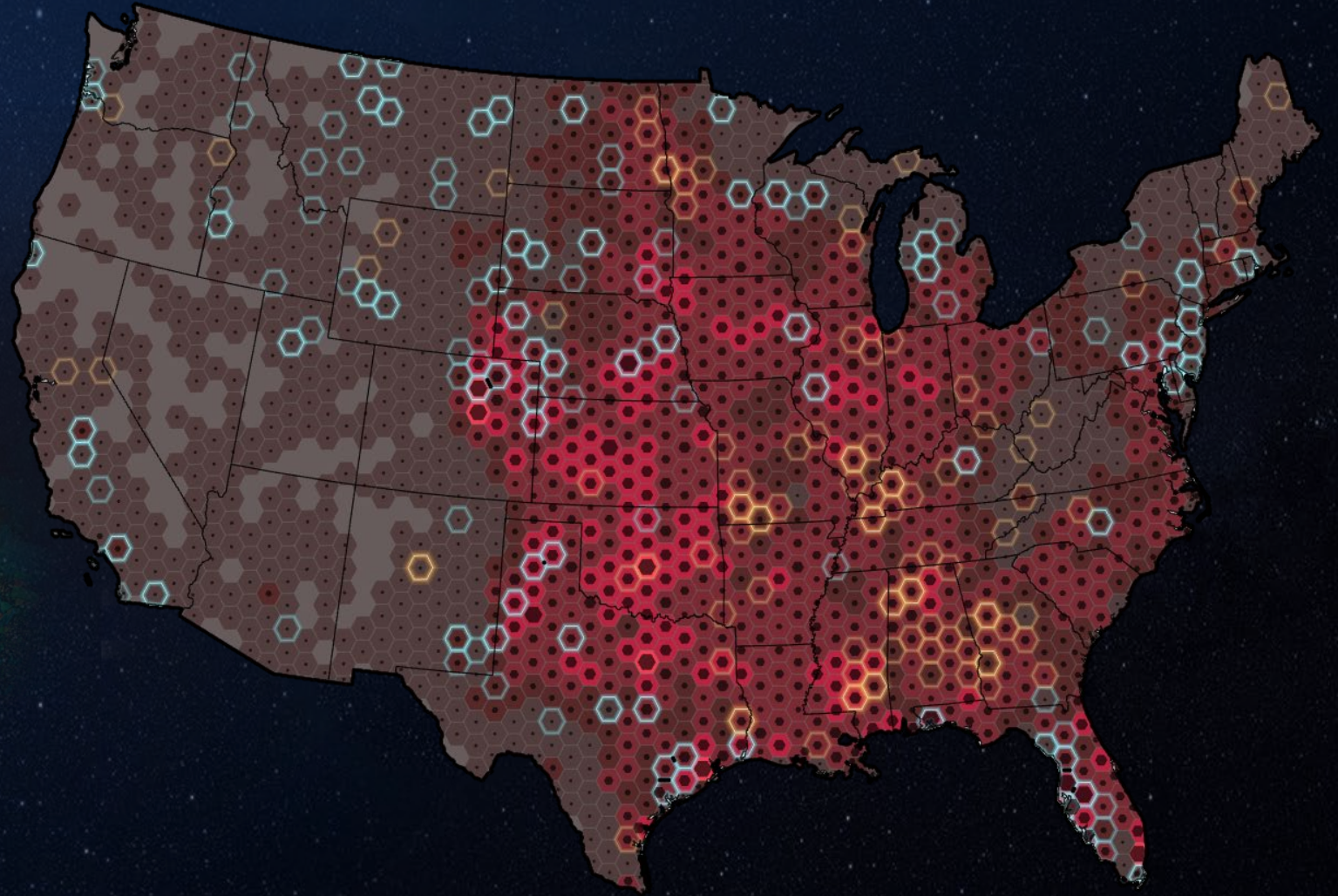
Decision
Making

Action

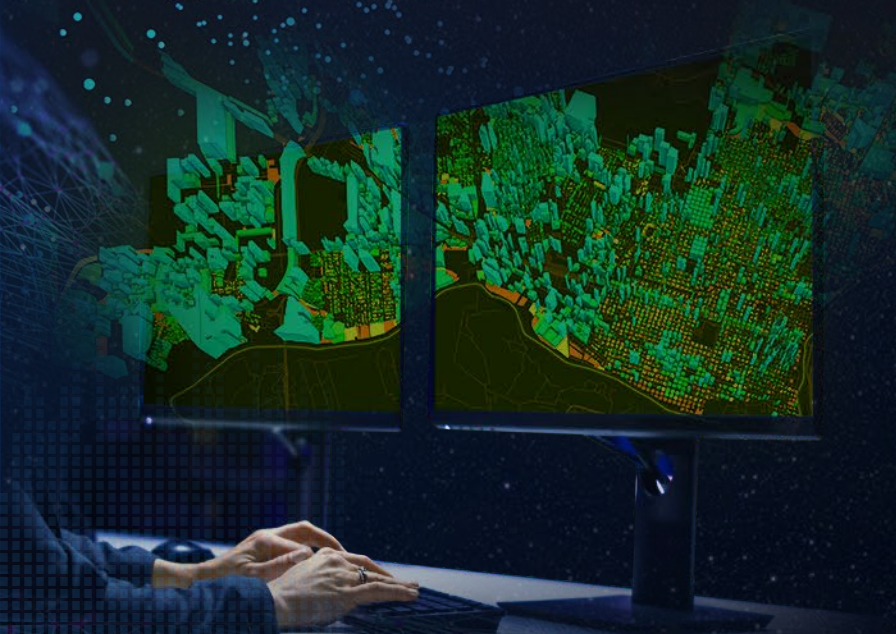
Where will climate shift agricultural areas?



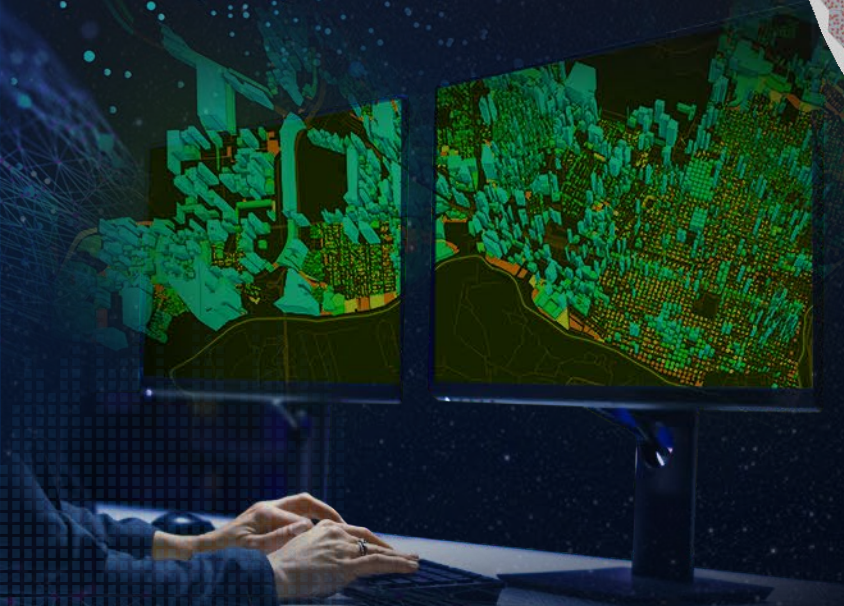
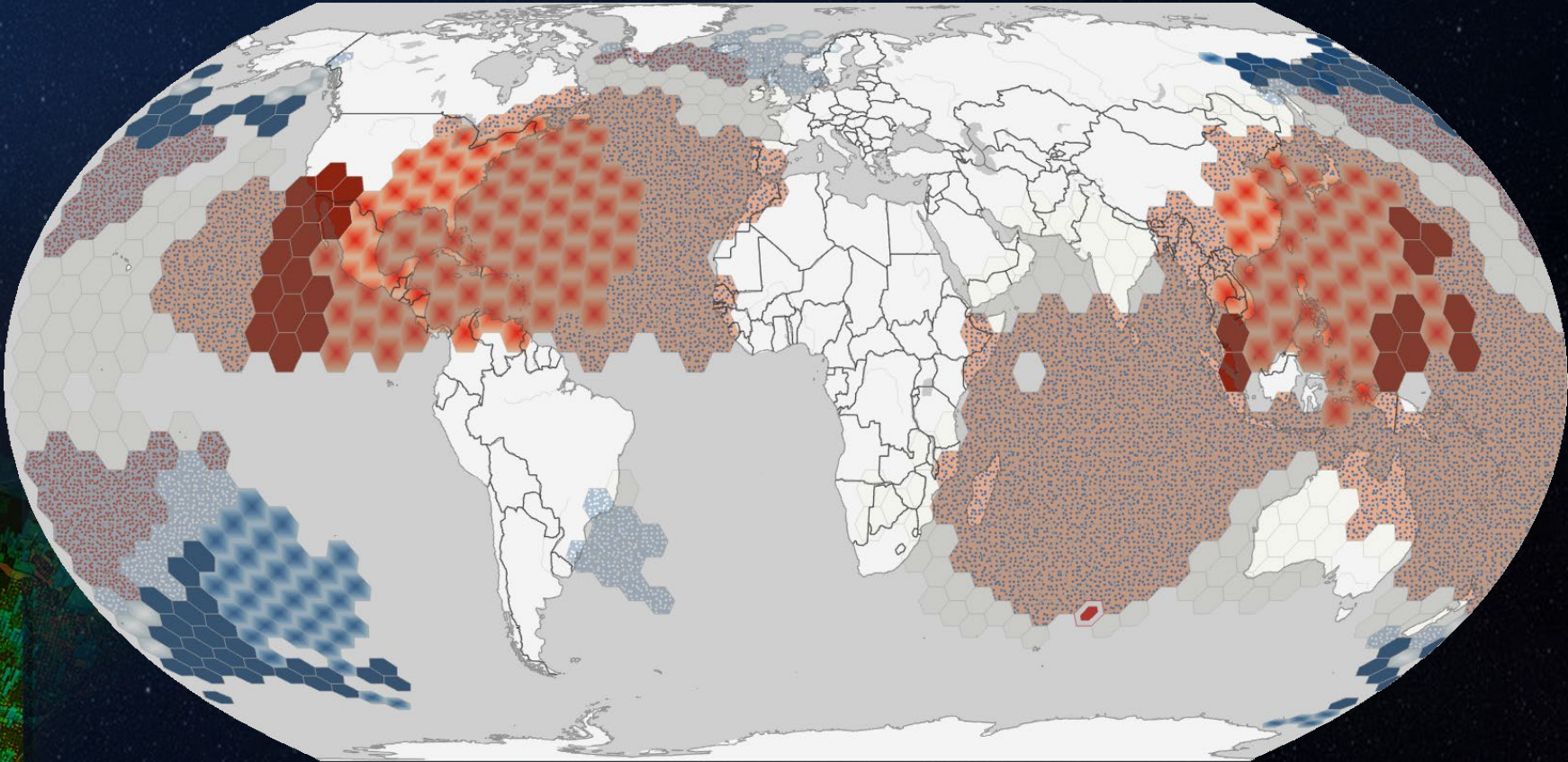
Is tornado activity trending in at-risk populated areas?



...how about the conditions?

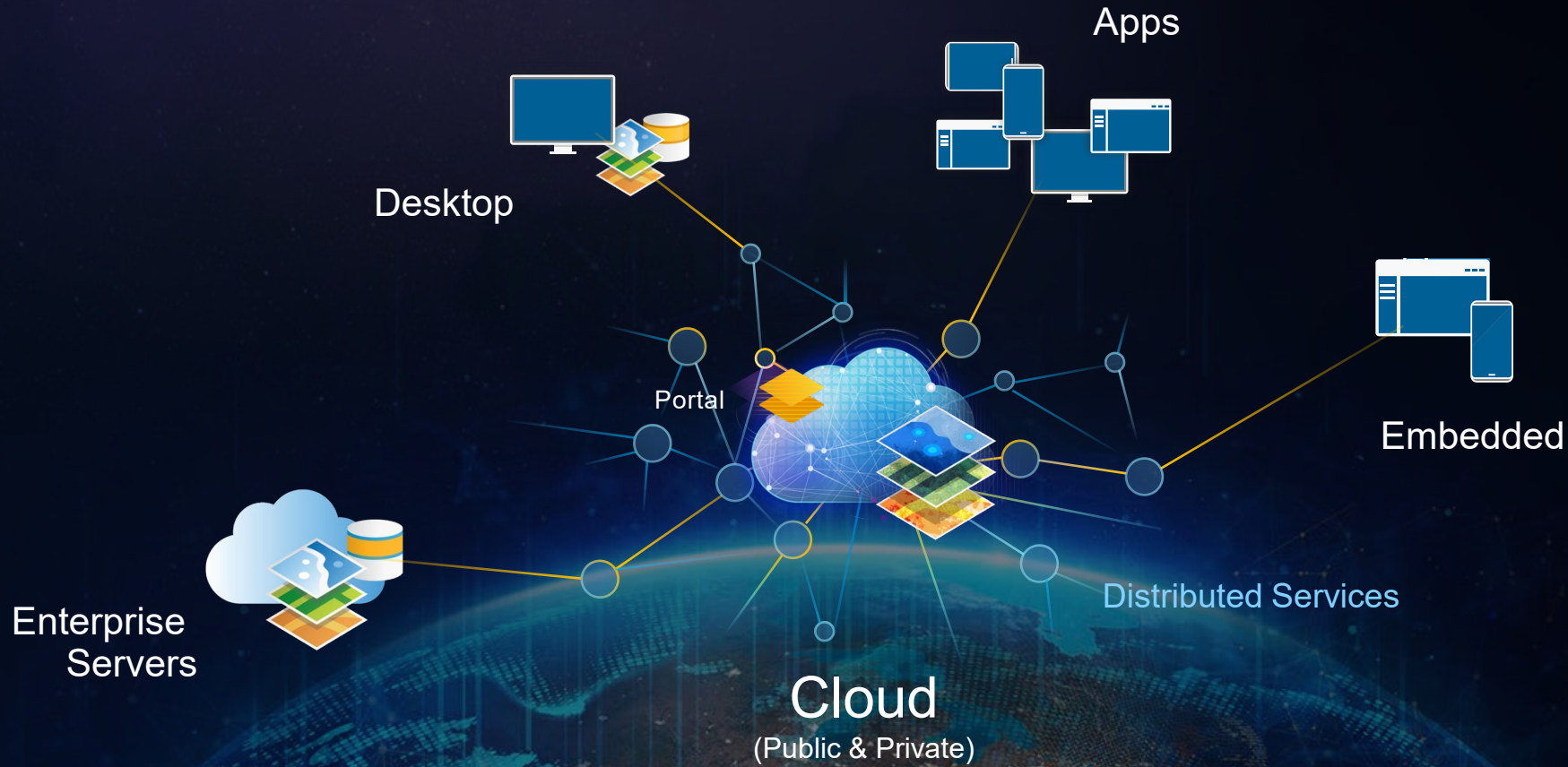


Can we examine sub-basin activity in hurricanes?

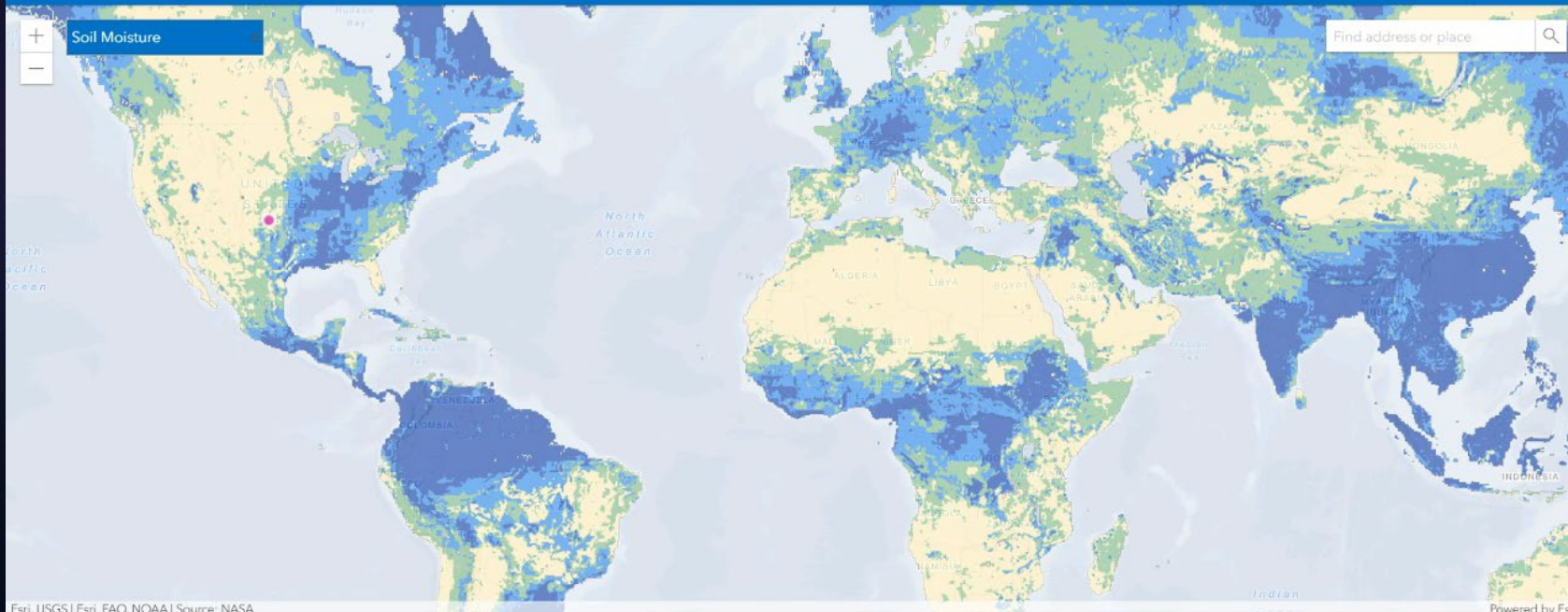


GIS Is Increasingly Becoming Interconnected

Creating a GeoCollaboration Infrastructure



*Connecting and Streamlining . . .
Collaboration, Workflows and Decision Making*



Recharge

Jul 2021

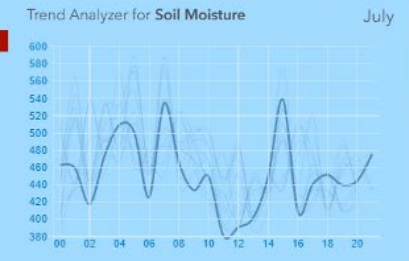
Precipitation	93 mm
Runoff	2 mm
Evapotranspiration	107 mm
Soil Moisture	475 mm
Snowpack	0 mm

← Normal

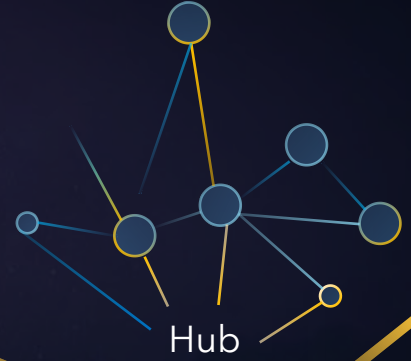
-16 mm of water was depleted from storage this month. Total soil moisture is 5% above average for July.

Depletion

Download water balance data as CSV



CMIP/NCA CFS/R
Risk assessments Infrastructure
Census/ACS Environmental
Find and Access Open Data



Build Community of Users



Maps and Apps
Dashboards/WAB



Teach Workflows
and Implementation



Community Outreach
StoryMaps

Space-Time Pattern Mining with Seasonal Forecasts

