



Madden-Julian Oscillation: Recent Evolution, Current Status and Predictions

**Update prepared by
Climate Prediction Center / NCEP
June 6, 2011**



Outline

- **Overview**
- **Recent Evolution and Current Conditions**
- **MJO Index Information**
- **MJO Index Forecasts**
- **MJO Composites**



Overview

- The MJO signal remained weak during the past seven days.
- The dynamical model MJO index forecasts indicate a continuation of generally weak, unorganized activity over the next two weeks.
- Based on the latest observations and most MJO index model forecasts, the MJO is not expected to contribute significantly to rainfall anomalies across the Tropics.

Additional potential impacts across the global tropics are available at:
<http://www.cpc.ncep.noaa.gov/products/precip/CWlink/ghazards/index.php>



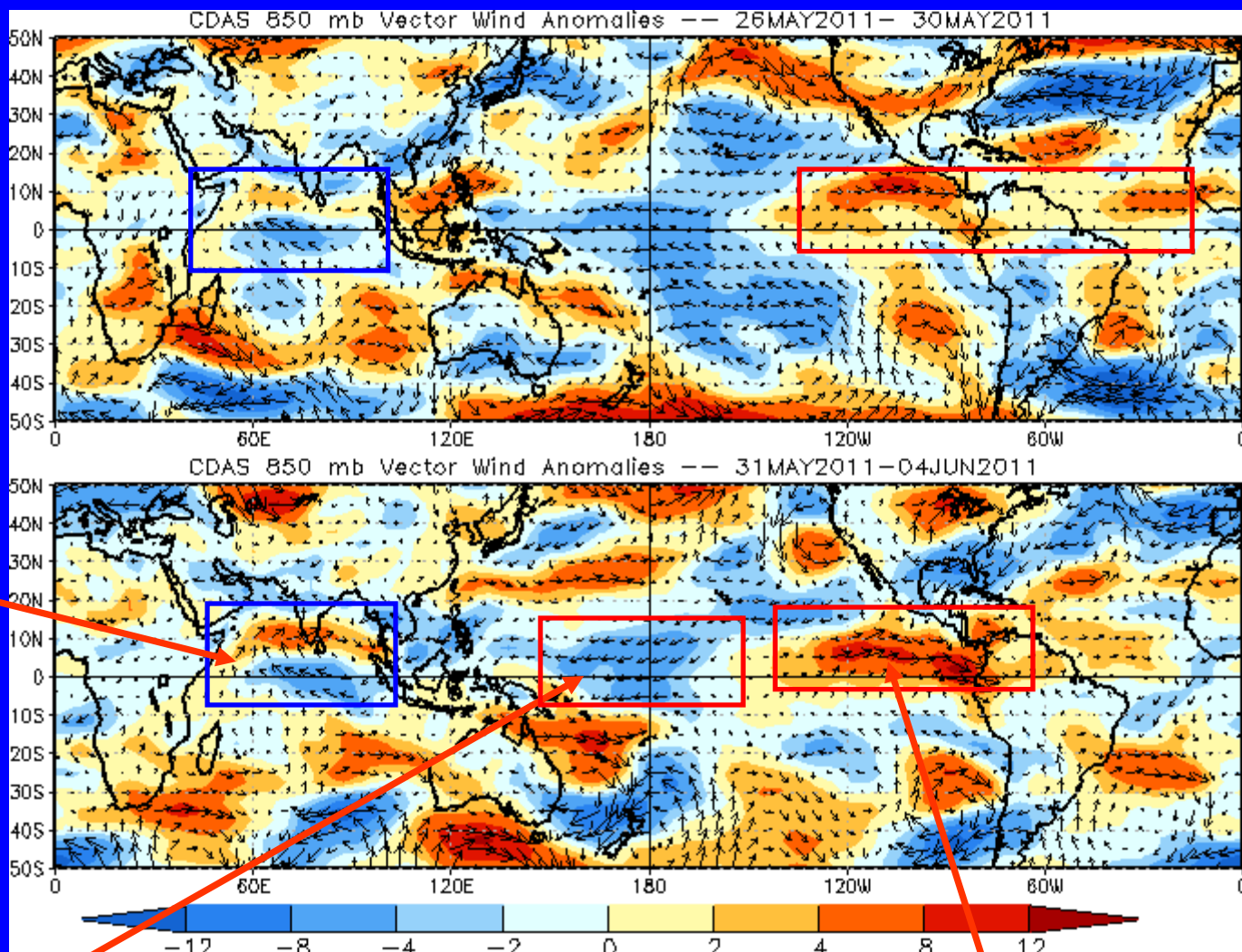
850-hPa Vector Wind Anomalies (m s^{-1})

Note that shading denotes the zonal wind anomaly

Blue shades: Easterly anomalies

Red shades: Westerly anomalies

Enhanced flow is evident over the Indian Ocean and Arabian Sea to southern India.



Easterly anomalies continue across the western Pacific.

Westerly anomalies increased across the eastern Pacific Ocean during the last five days.

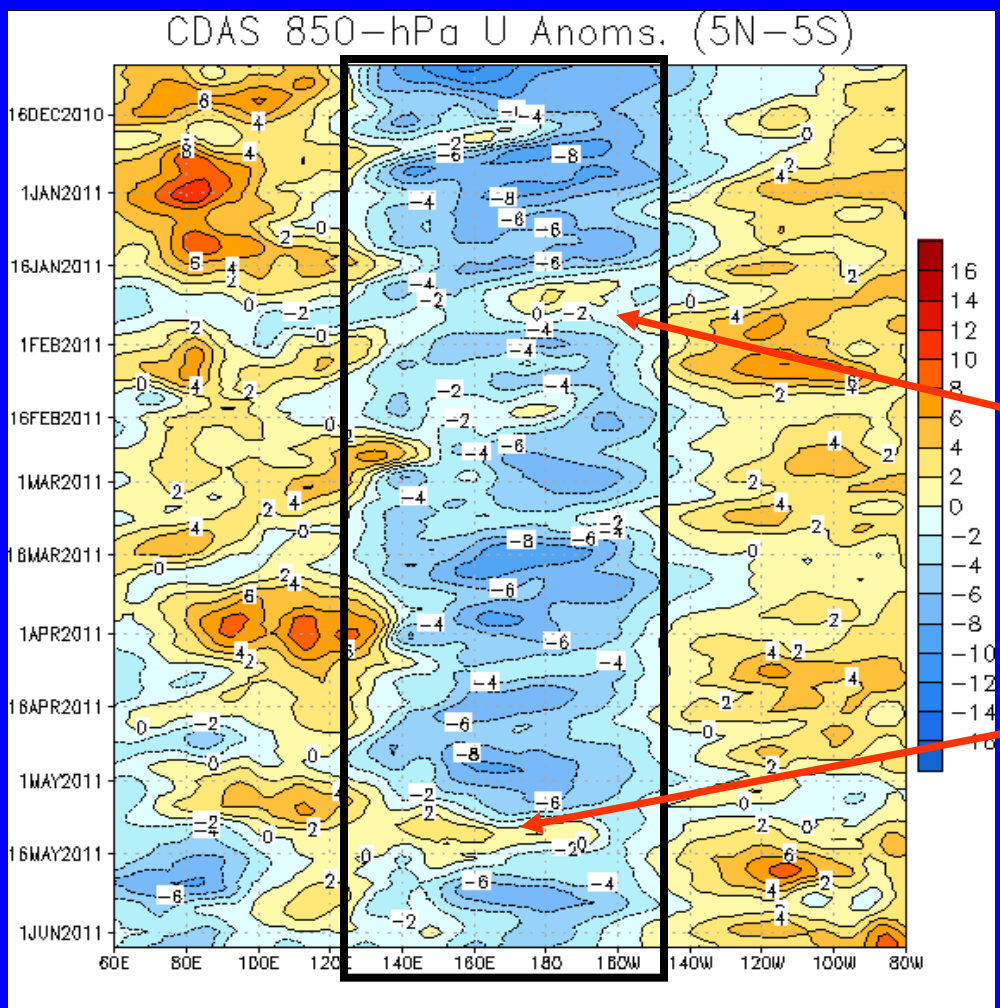


850-hPa Zonal Wind Anomalies (m s^{-1})

Westerly anomalies (orange/red shading) represent anomalous west-to-east flow

Easterly anomalies (blue shading) represent anomalous east-to-west flow

Time
↓



Longitude

Easterly anomalies have persisted in the west-central Pacific since November (black box) consistent with La Nina conditions. The magnitude of these anomalies, however, has gradually weakened over the period.

In late January, easterly winds weakened and westerly anomalies developed near the Date Line due to MJO activity.

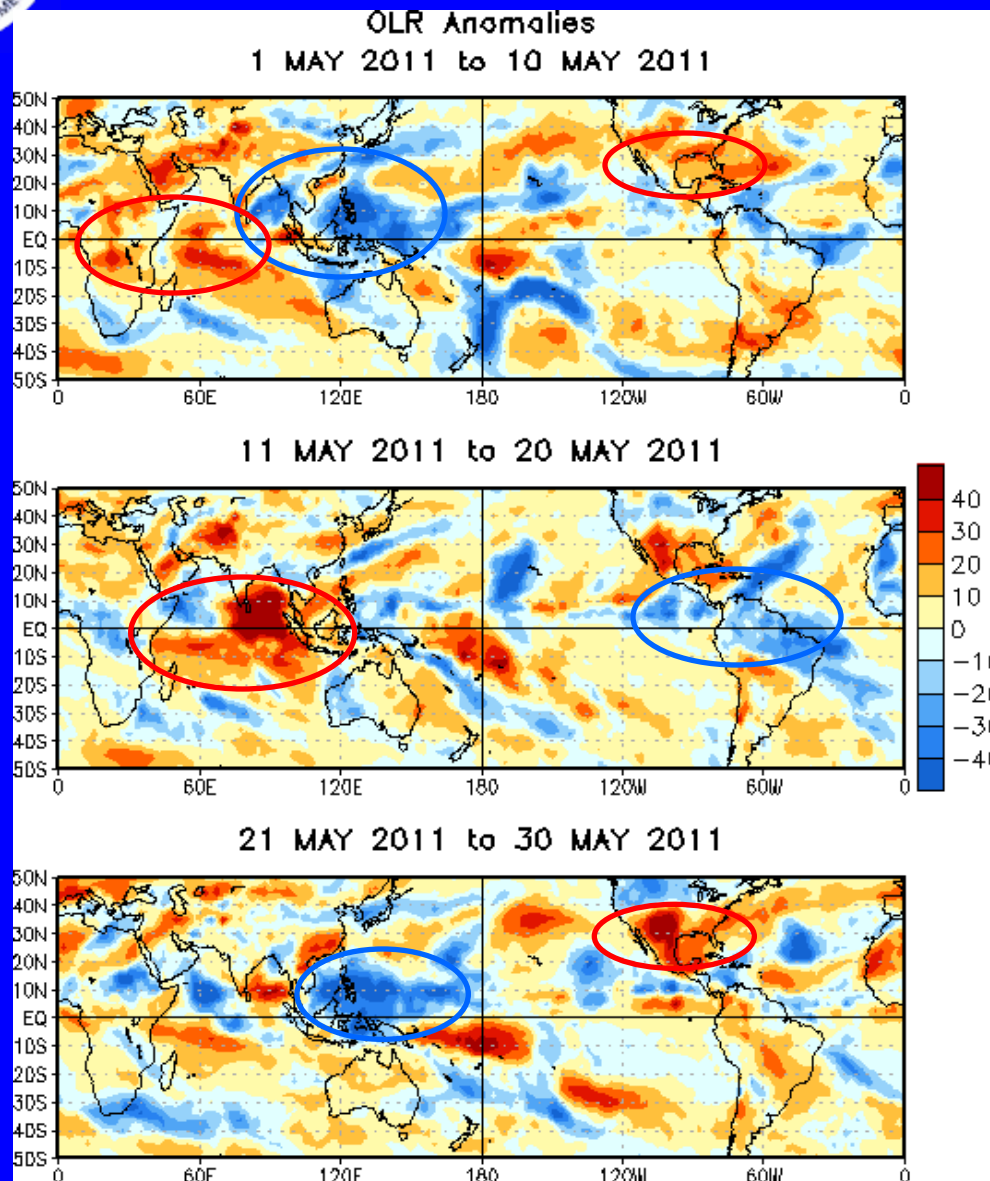
A recent burst of westerly winds associated with the MJO moved across the Pacific early-to-mid May. Most recently, easterly anomalies have returned to the western Pacific.



OLR Anomalies – Past 30 days

Drier-than-normal conditions, positive OLR anomalies (yellow/red shading)

Wetter-than-normal conditions, negative OLR anomalies (blue shading)



During early May, enhanced convection continued from the Bay of Bengal to the Western Pacific, while suppressed convection continued across parts of Africa, the western Indian Ocean and the southern CONUS and western Caribbean.

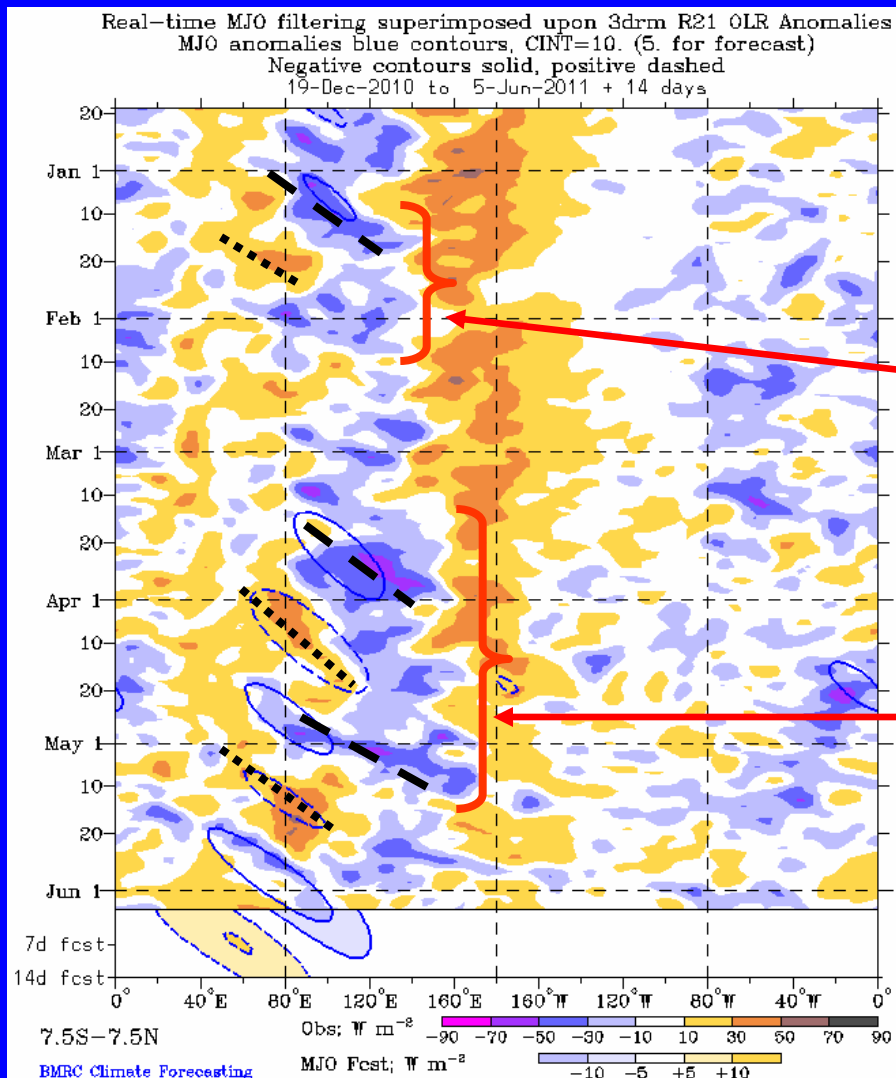
In mid-May, enhanced convection developed across much of northern South America, the eastern Pacific and the eastern Caribbean. Suppressed convection was evident across the majority Indian Ocean.

During late May, enhanced convection was evident across the far western Pacific while suppressed convection continued across the southern CONUS and Gulf of Mexico.



Outgoing Longwave Radiation (OLR)

Anomalies (7.5 S-7.5 N)



Drier-than-normal conditions, positive OLR anomalies (yellow/red shading)

Wetter-than-normal conditions, negative OLR anomalies (blue shading)

(Courtesy of the Bureau of Meteorology (BOM) - Australia)

Weak MJO activity was experienced during January. Enhanced convection developed near 80°E and shifted to the Maritime continent followed by an area of suppressed convection.

During late March and again in late April, two distinct areas of enhanced convection propagated eastward followed by suppressed convection thereafter. This activity was in part associated with MJO activity.

Longitude

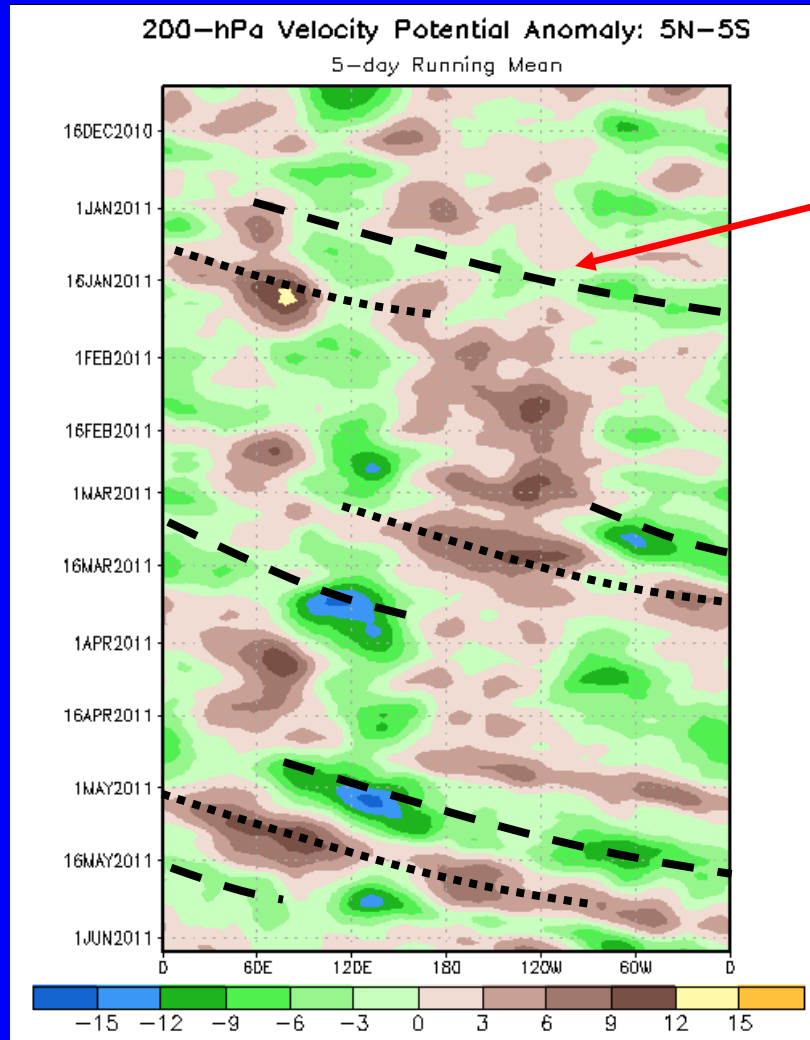


200-hPa Velocity Potential Anomalies (5 S-5 N)

Positive anomalies (brown shading) indicate unfavorable conditions for precipitation

Negative anomalies (green shading) indicate favorable conditions for precipitation

Time



During mid-to-late January, the MJO strengthened and upper-level divergence shifted eastward from 120E and upper-level convergence shifted from Africa to near the Date Line.

Eastward propagation of anomalies was observed during March associated with weak MJO activity.

Robust MJO activity was observed during late April into May as upper-level divergence (green shades) shifted eastward from the Indian Ocean beginning in early May followed by upper-level divergence (brown shades).

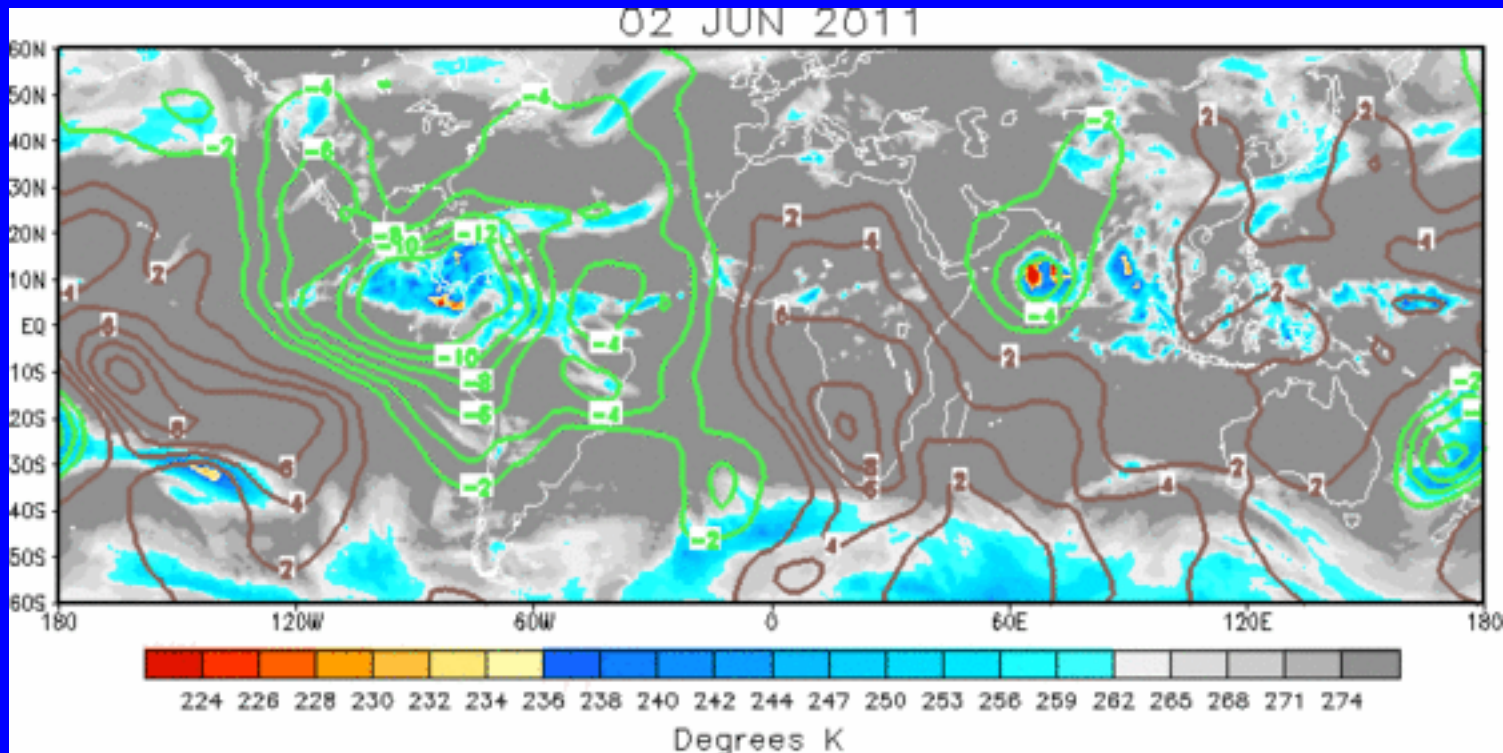
Longitude



IR Temperatures (K) / 200-hPa Velocity Potential Anomalies

Positive anomalies (brown contours) indicate unfavorable conditions for precipitation

Negative anomalies (green contours) indicate favorable conditions for precipitation



The large scale velocity potential pattern shows anomalous upper-level divergence over Central America and northern South America with smaller areas of anomalous upper-level convergence across parts of Africa and the Pacific.

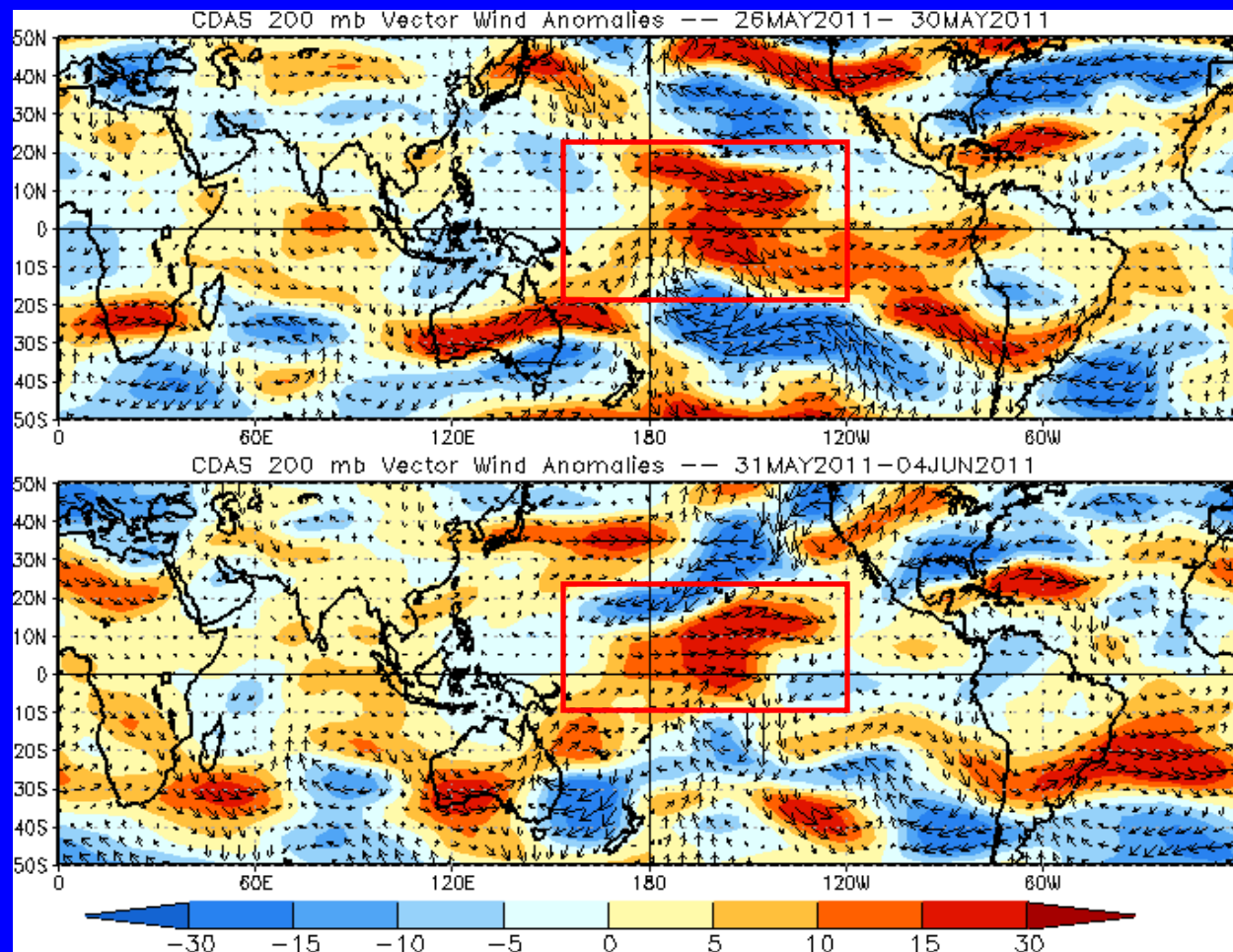


200-hPa Vector Wind Anomalies (m s^{-1})

Note that shading denotes the zonal wind anomaly

Blue shades: Easterly anomalies

Red shades: Westerly anomalies



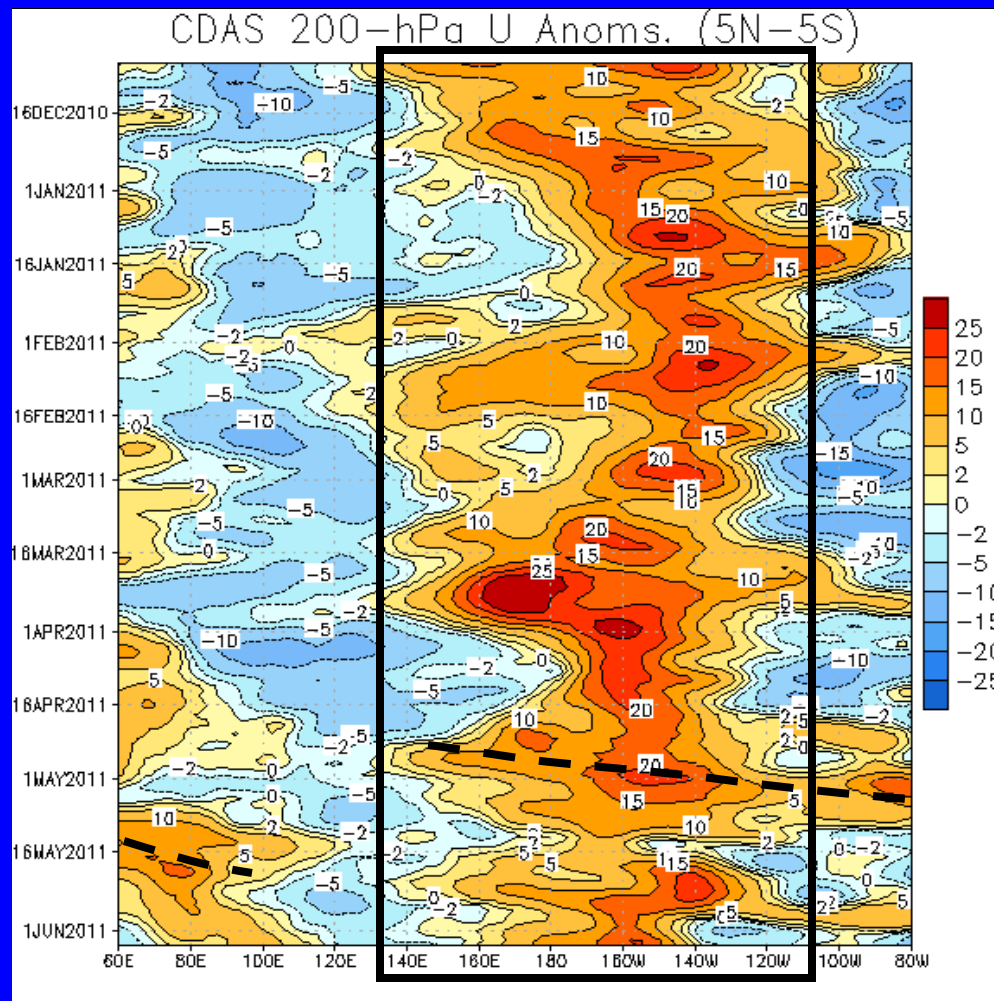
Westerly anomalies continue across the central Pacific Ocean (red boxes).



200-hPa Zonal Wind Anomalies (m s^{-1})

Westerly anomalies (orange/red shading) represent anomalous west-to-east flow

Easterly anomalies (blue shading) represent anomalous east-to-west flow



Time



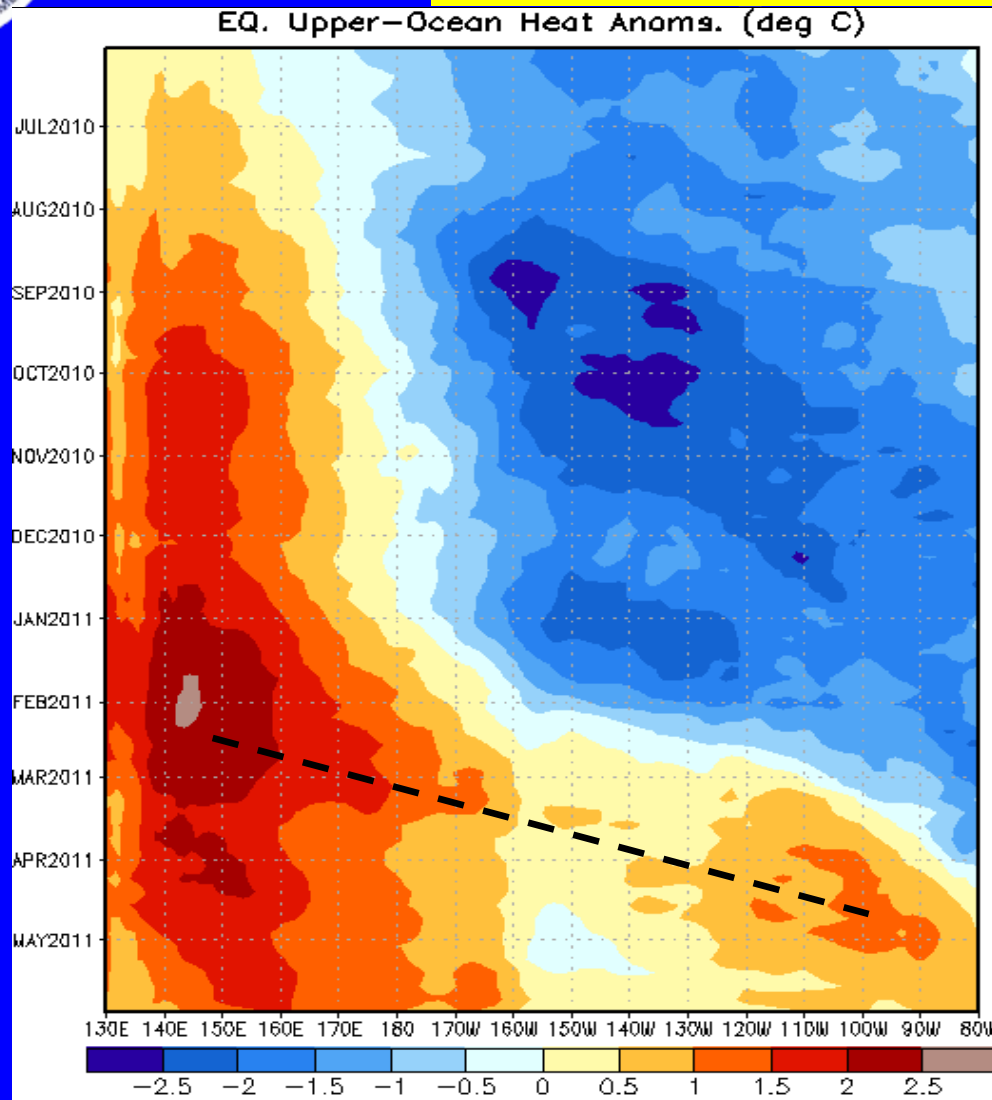
Longitude

Westerly anomalies persisted across a large area from the Maritime Continent to the central Pacific (black solid box) since November.

Significant eastward propagation of westerly anomalies was evident in late April and May (dashed line) associated with the MJO.



Weekly Heat Content Evolution in the Equatorial Pacific



Beginning in April 2010 heat content anomalies decreased across the Pacific in association with the upwelling phase of a Kelvin wave and later during the early summer due to the development of La Nina.

Since the beginning of January 2011, positive heat content anomalies have shifted eastward, while negative heat content anomalies weakened and then became positive across much of the Pacific basin.

An oceanic Kelvin wave (dashed line) shifted eastward during February and March 2011.



MJO Index -- Information

- The MJO index illustrated on the next several slides is the CPC version of the Wheeler and Hendon index (2004, hereafter WH2004).

Wheeler M. and H. Hendon, 2004: An All-Season Real-Time Multivariate MJO Index: Development of an Index for Monitoring and Prediction, *Monthly Weather Review*, 132, 1917-1932.

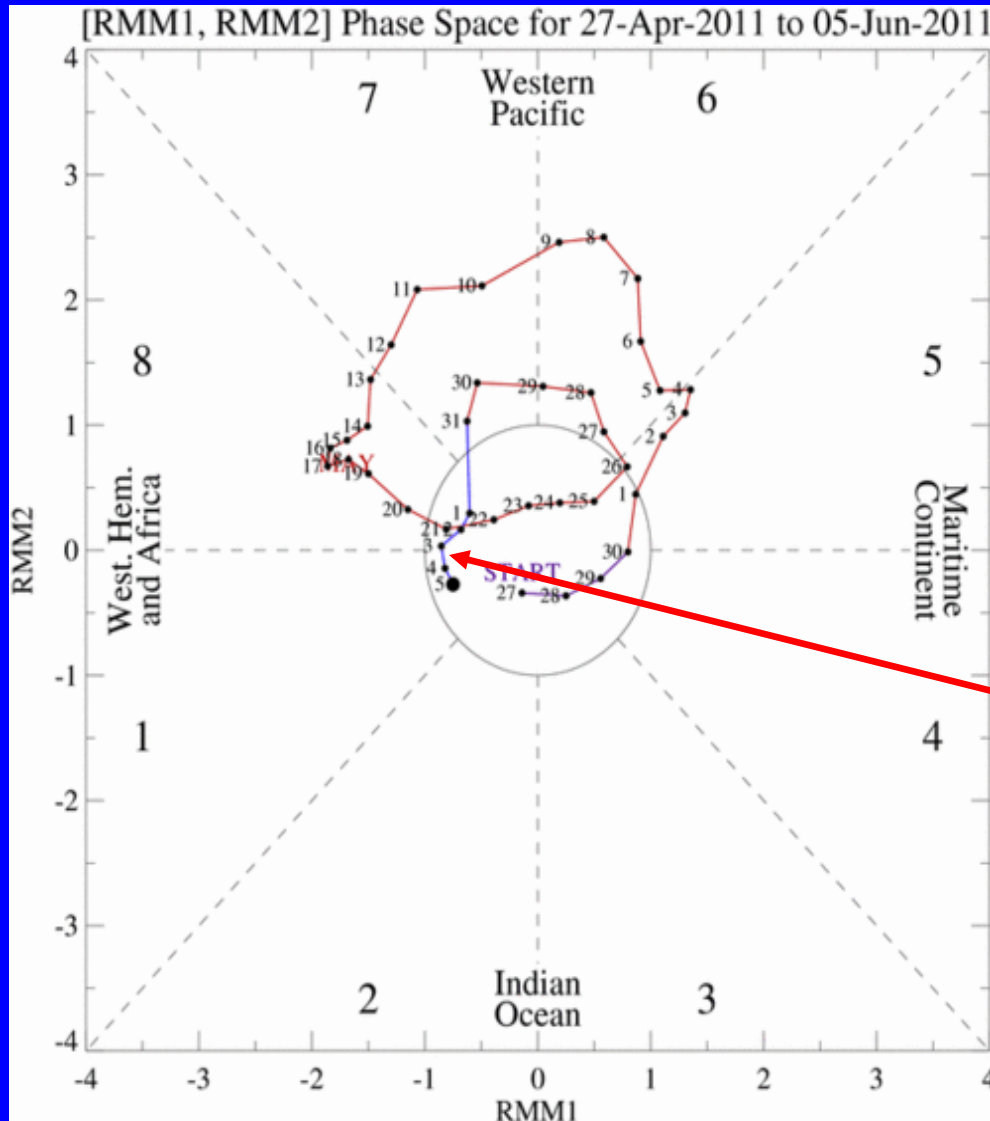
- The methodology is very similar to that described in WH2004 but does not include the linear removal of ENSO variability associated with a sea surface temperature index. The methodology is consistent with that outlined by the U.S. CLIVAR MJO Working Group.

Gottschalck et al. 2010: A Framework for Assessing Operational Madden-Julian Oscillation Forecasts: A CLIVAR MJO Working Group Project, *Bull. Amer. Met. Soc.*, 91, 1247-1258.

- The index is based on a combined Empirical Orthogonal Function (EOF) analysis using fields of near-equatorially-averaged 850-hPa and 200-hPa zonal wind and outgoing longwave radiation (OLR).



MJO Index -- Recent Evolution

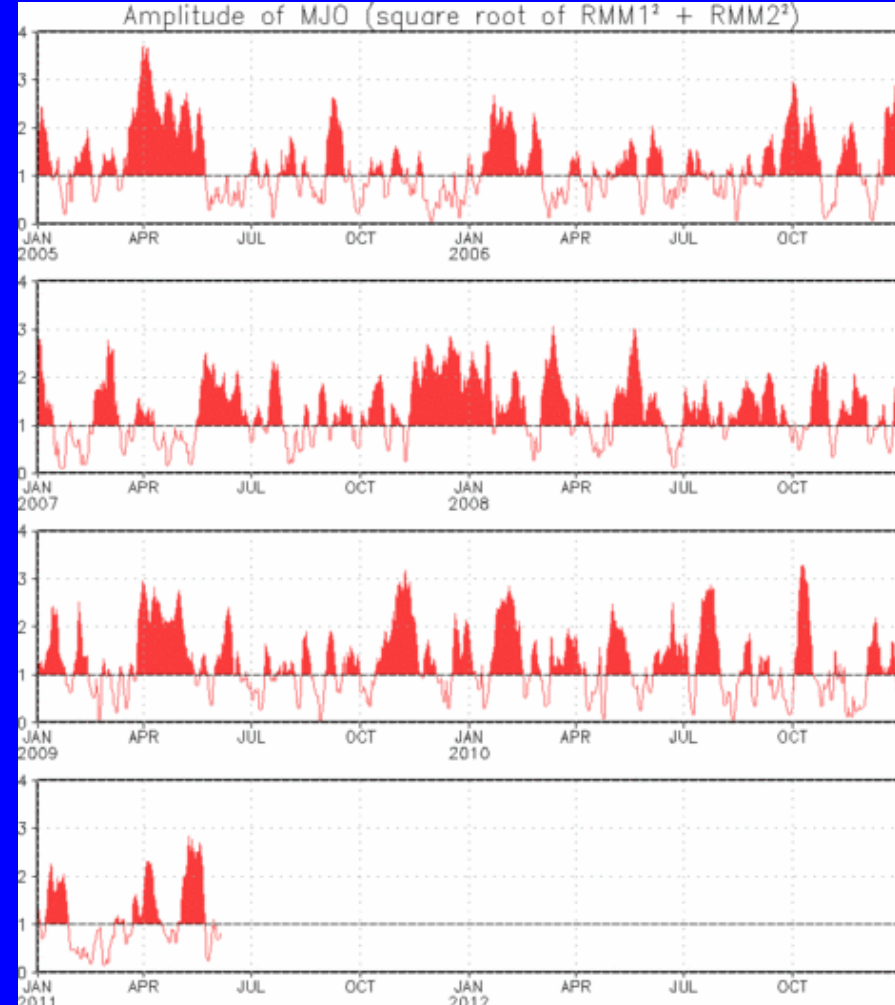
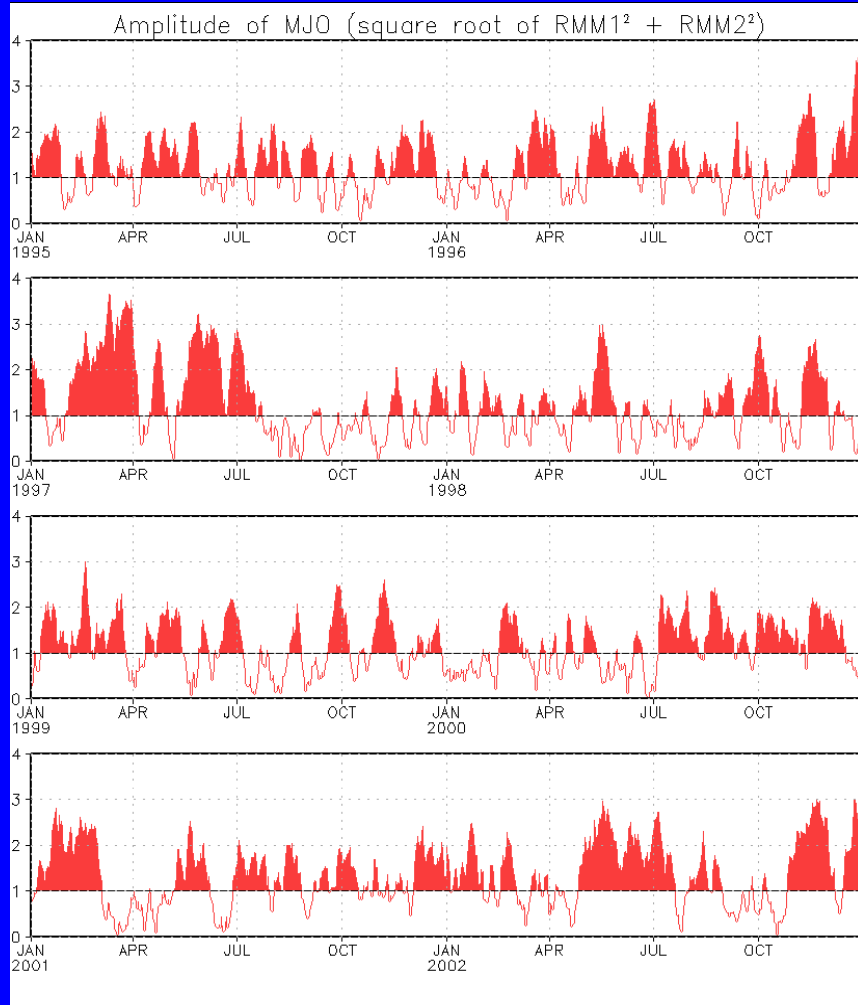


- The axes (RMM1 and RMM2) represent daily values of the principal components from the two leading modes
- The triangular areas indicate the location of the enhanced phase of the MJO
- Counter-clockwise motion is indicative of eastward propagation. Large dot most recent observation.
- Distance from the origin is proportional to MJO strength
- Line colors distinguish different months

The MJO index indicates generally weak activity during the past week.



MJO Index – Historical Daily Time Series



Time series of daily MJO index amplitude from 1995 to present.
Plots put current MJO activity in historical context.



Ensemble GFS (GEFS) MJO Forecast

Yellow Lines – 20 Individual Members

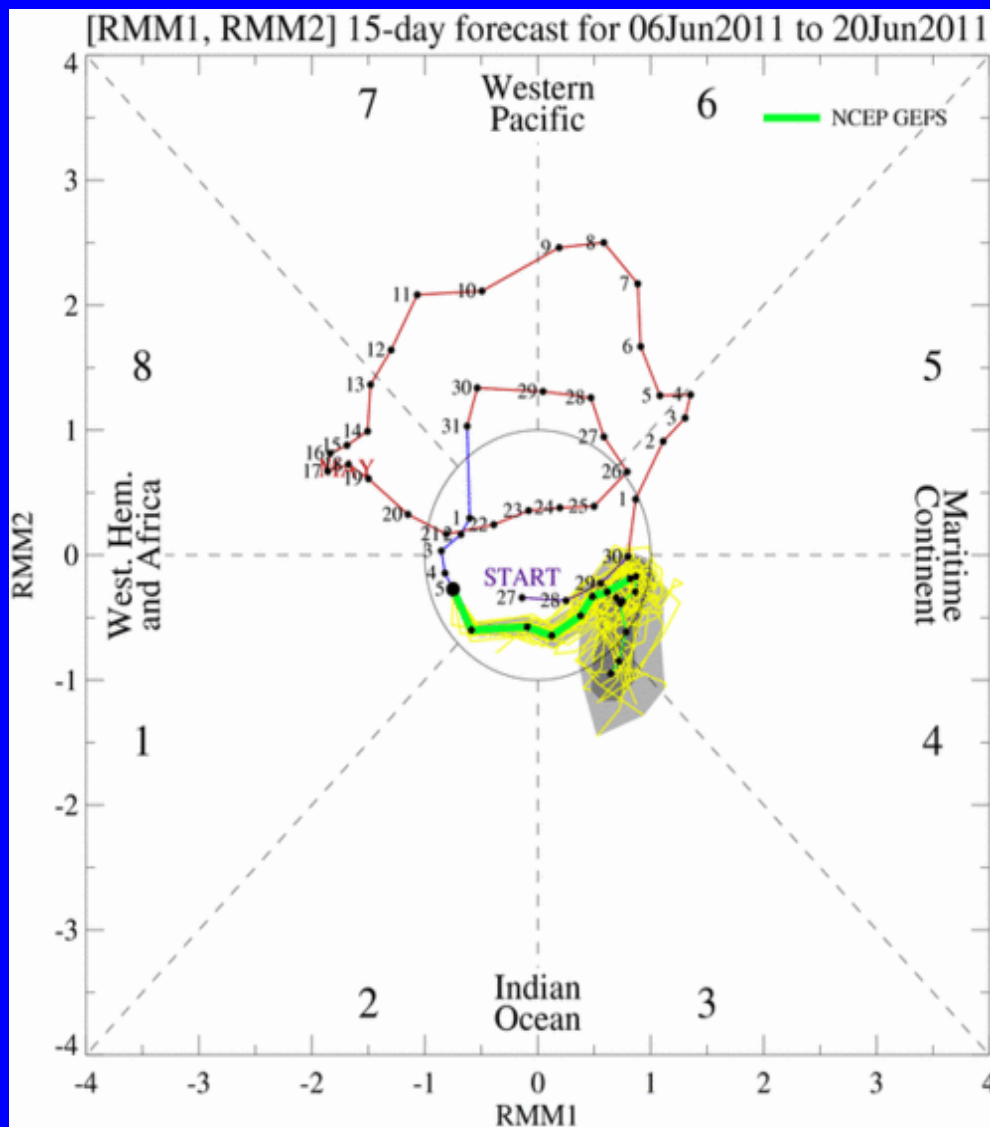
Green Line – Ensemble Mean

RMM1 and RMM2 values for the most recent 40 days and forecasts from the ensemble Global Forecast System (GEFS) for the next 15 days

light gray shading: 90% of forecasts

dark gray shading: 50% of forecasts

The ensemble GFS forecasts generally indicate continued weak activity during the next few weeks.

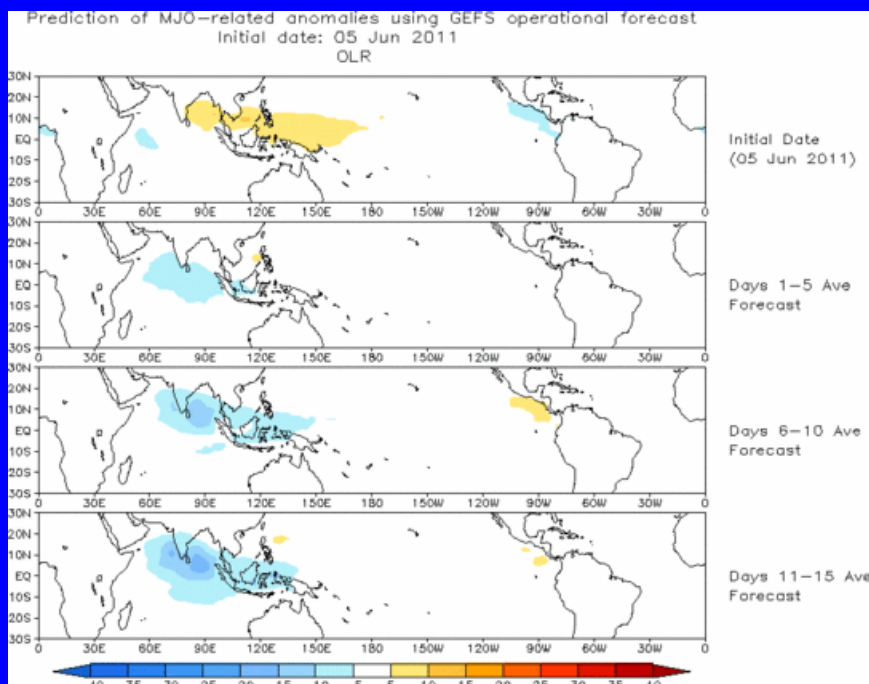




Ensemble Mean GFS MJO Forecast

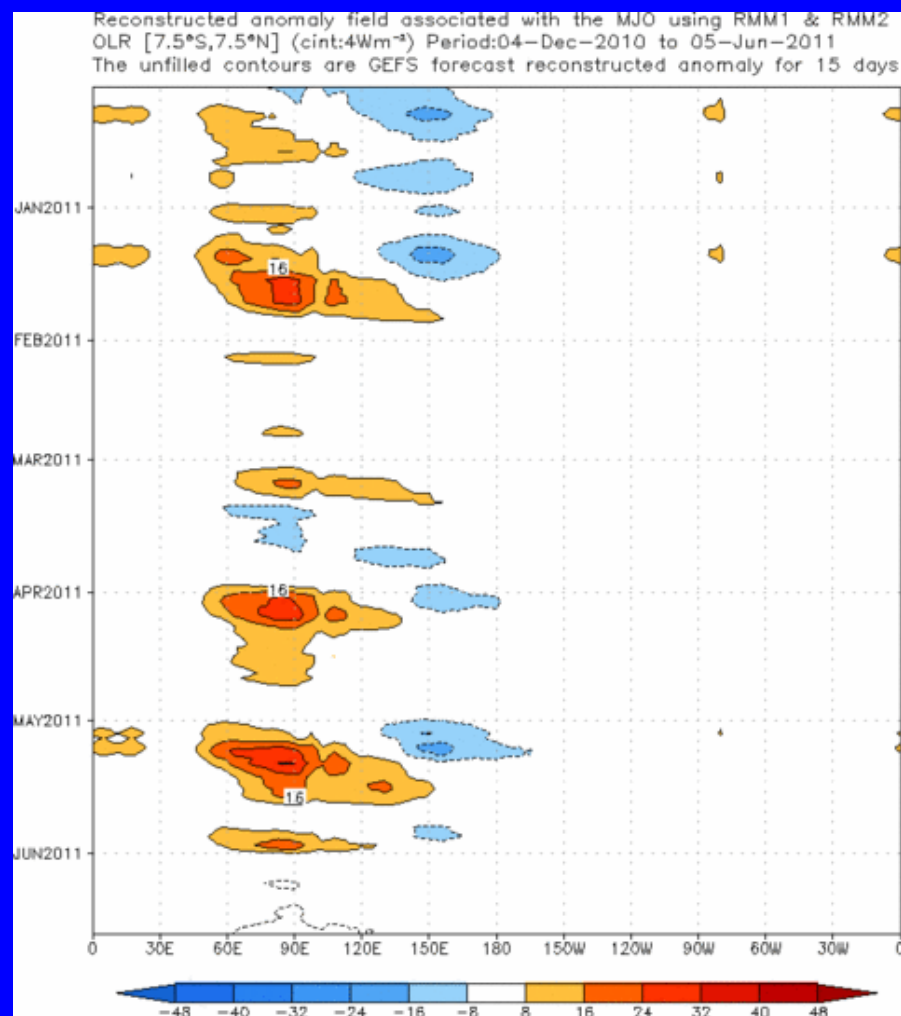
Figures below show MJO associated OLR anomalies only (reconstructed from RMM1 and RMM2) and do not include contributions from other modes (*i.e.*, ENSO, monsoons)

Spatial map of OLR anomalies for the next 15 days



The GEFS ensemble mean forecast indicates a weak signal supporting enhanced convection stretching from southern India to parts of the western maritime continent, mainly during Week-2.

Time-longitude section of (7.5 S–7.5 N) OLR anomalies for the last 180 days and for the next 15 days





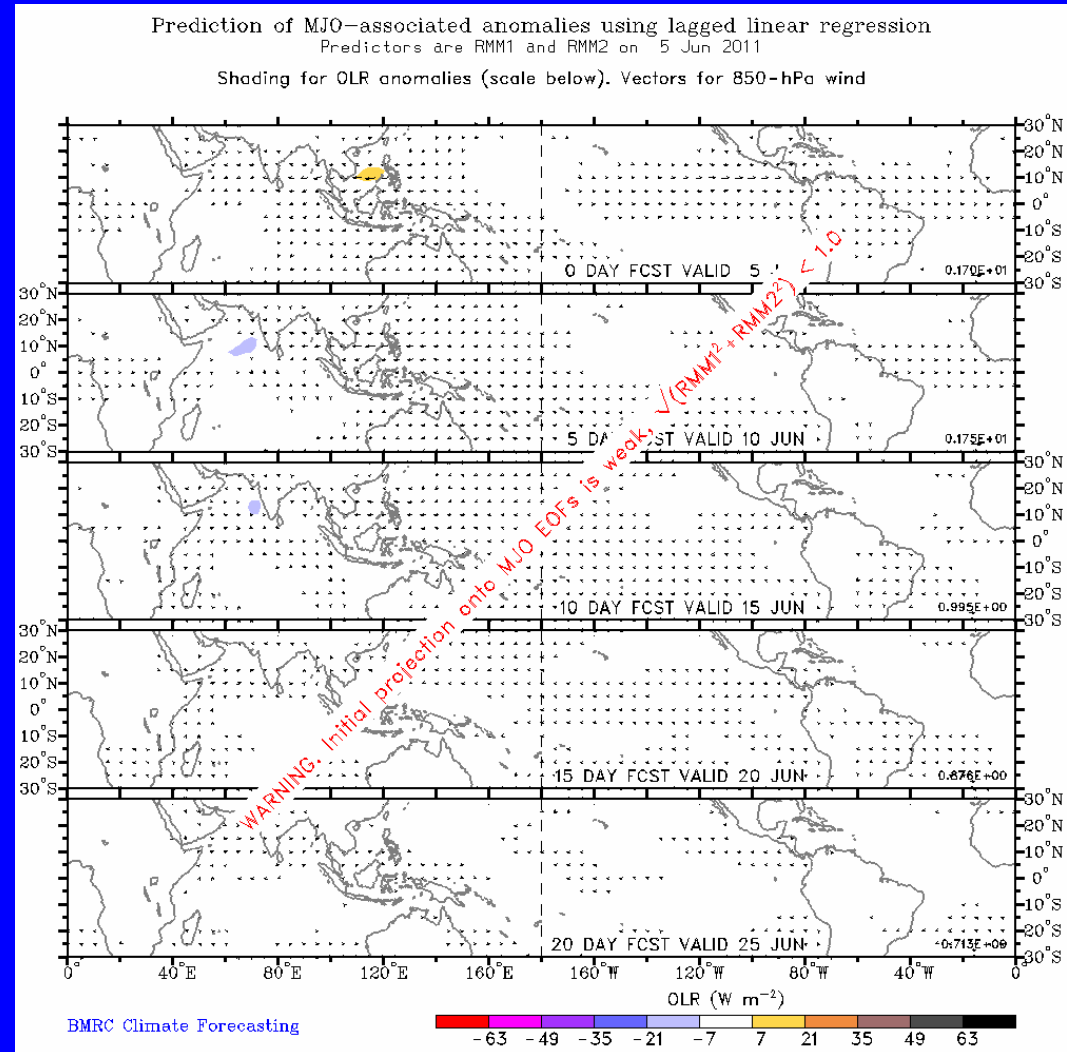
Statistical MJO Forecast

Figure below shows MJO associated OLR anomalies only (reconstructed from RMM1 and RMM2) and do not include contributions from other modes (*i.e.*, ENSO, monsoons)

**Spatial map of OLR anomalies and
850-hPa vectors for the next 20 days**

**(Courtesy of the Bureau of Meteorology
Research Centre - Australia)**

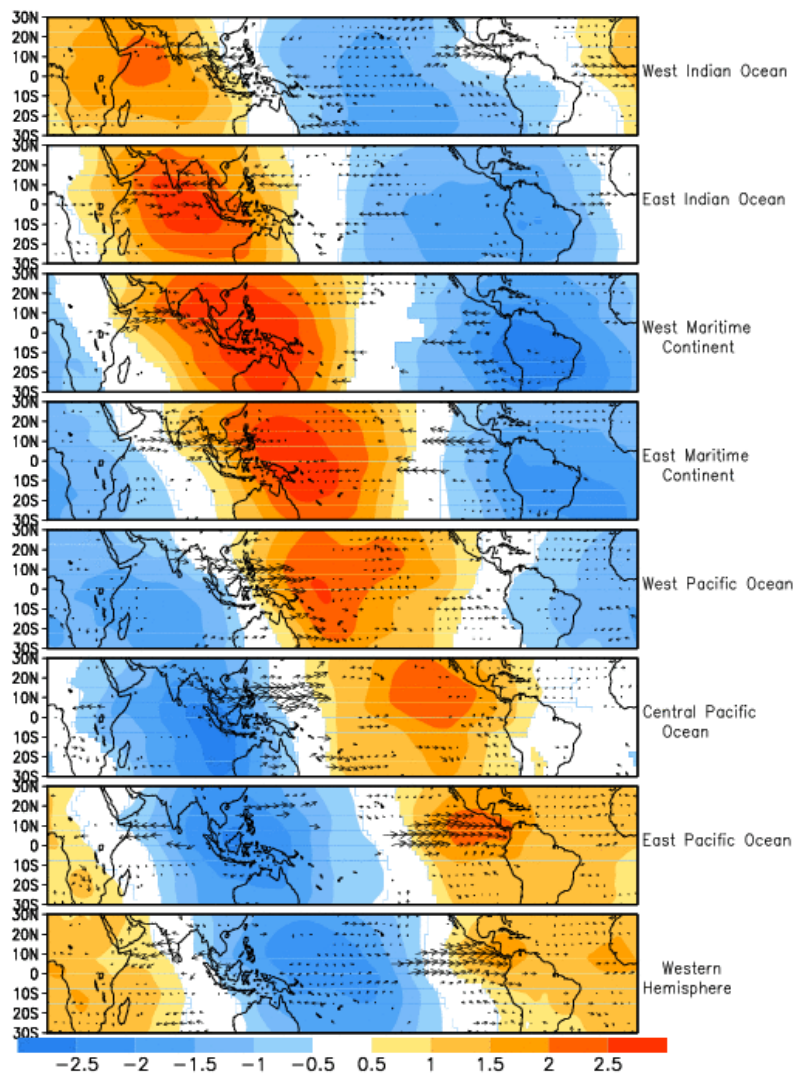
**The forecast calls for little MJO activity
during the period.**



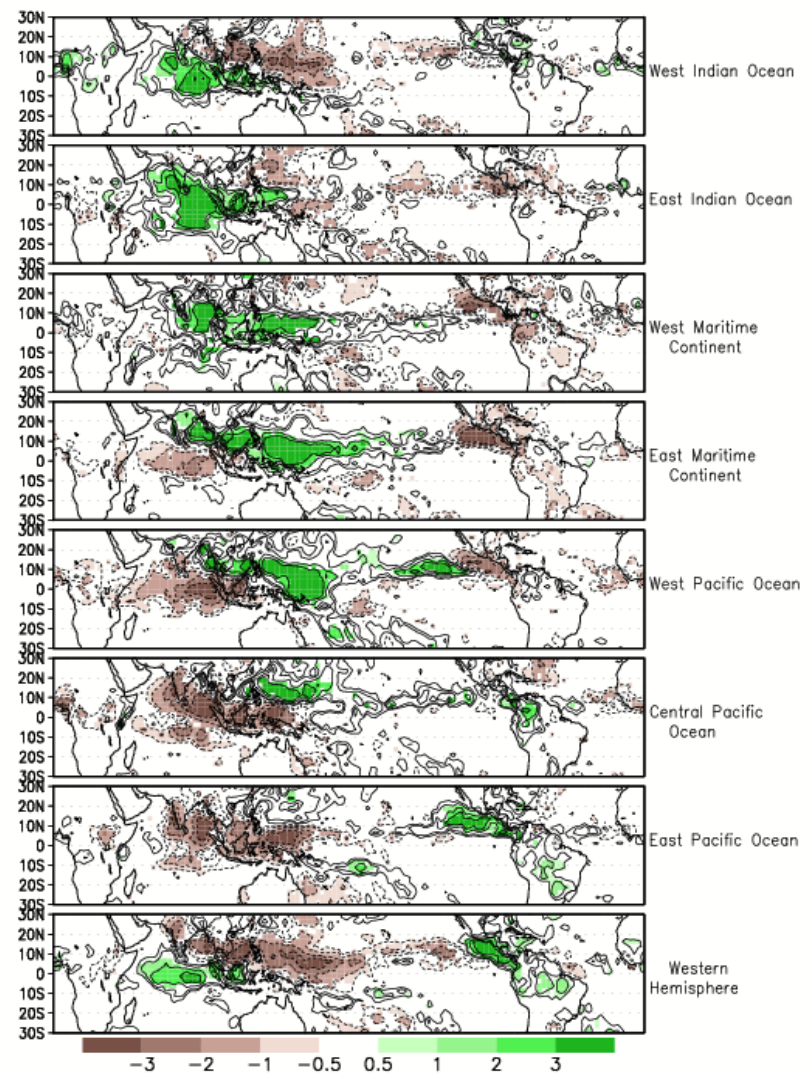


MJO Composites – Global Tropics

850-hPa Wind Anomalies (May-Sep)



Precipitation Anomalies (May-Sep)

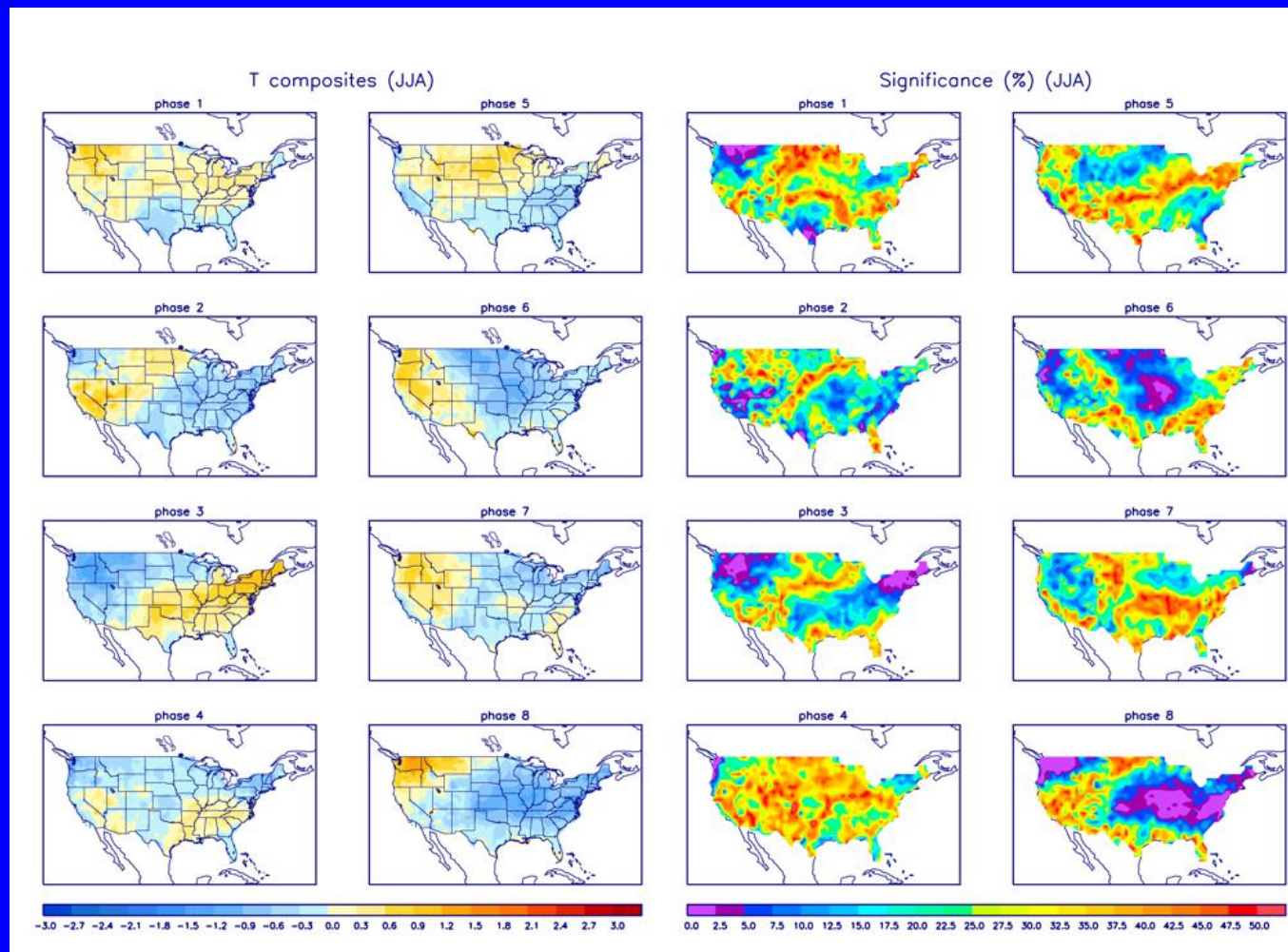




U.S. MJO Composites – Temperature

▪ Left hand side plots show temperature anomalies by MJO phase for MJO events that have occurred over the three month period in the historical record. Blue (orange) shades show negative (positive) anomalies respectively.

▪ Right hand side plots show a measure of significance for the left hand side anomalies. Dark blue and purple shades indicate areas in which the anomalies are significant at the 95% or better confidence level.



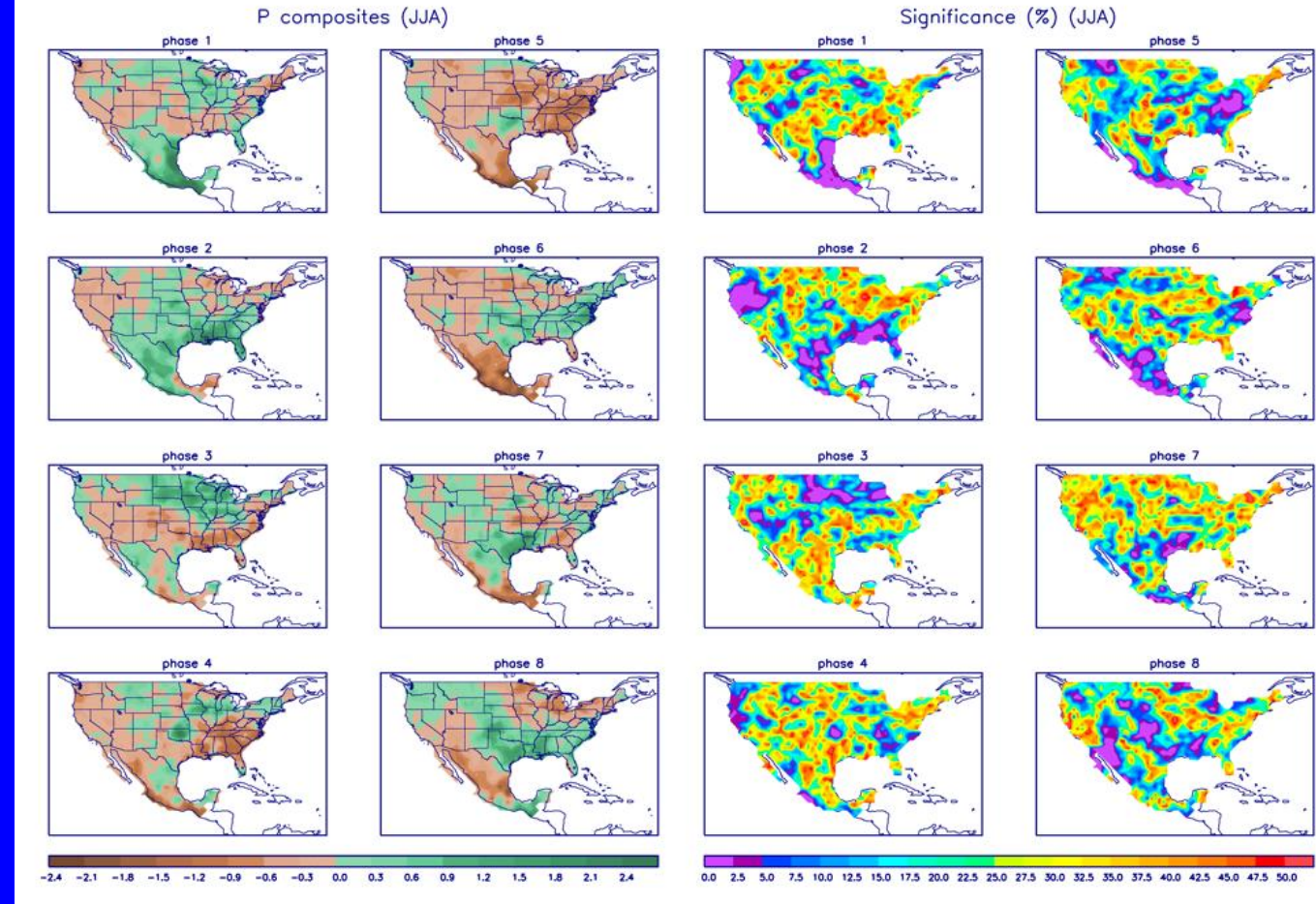
Zhou et al. (2010): A composite study of the MJO influence on the surface air temperature and precipitation over the Continental United States, *Climate Dynamics*, Submitted.

<http://www.cpc.ncep.noaa.gov/products/precip/CWlink/MJO/mjo.shtml>



U.S. MJO Composites – Precipitation

- Left hand side plots show precipitation anomalies by MJO phase for MJO events that have occurred over the three month period in the historical record. Brown (green) shades show negative (positive) anomalies respectively.
- Right hand side plots show a measure of significance for the left hand side anomalies. Dark blue and purple shades indicate areas in which the anomalies are significant at the 95% or better confidence level.



Zhou et al. (2010): A composite study of the MJO influence on the surface air temperature and precipitation over the Continental United States, *Climate Dynamics*, Submitted.

<http://www.cpc.ncep.noaa.gov/products/precip/CWlink/MJO/mjo.shtml>