

Global Tropics Hazards And Benefits Outlook

October 2, 2012

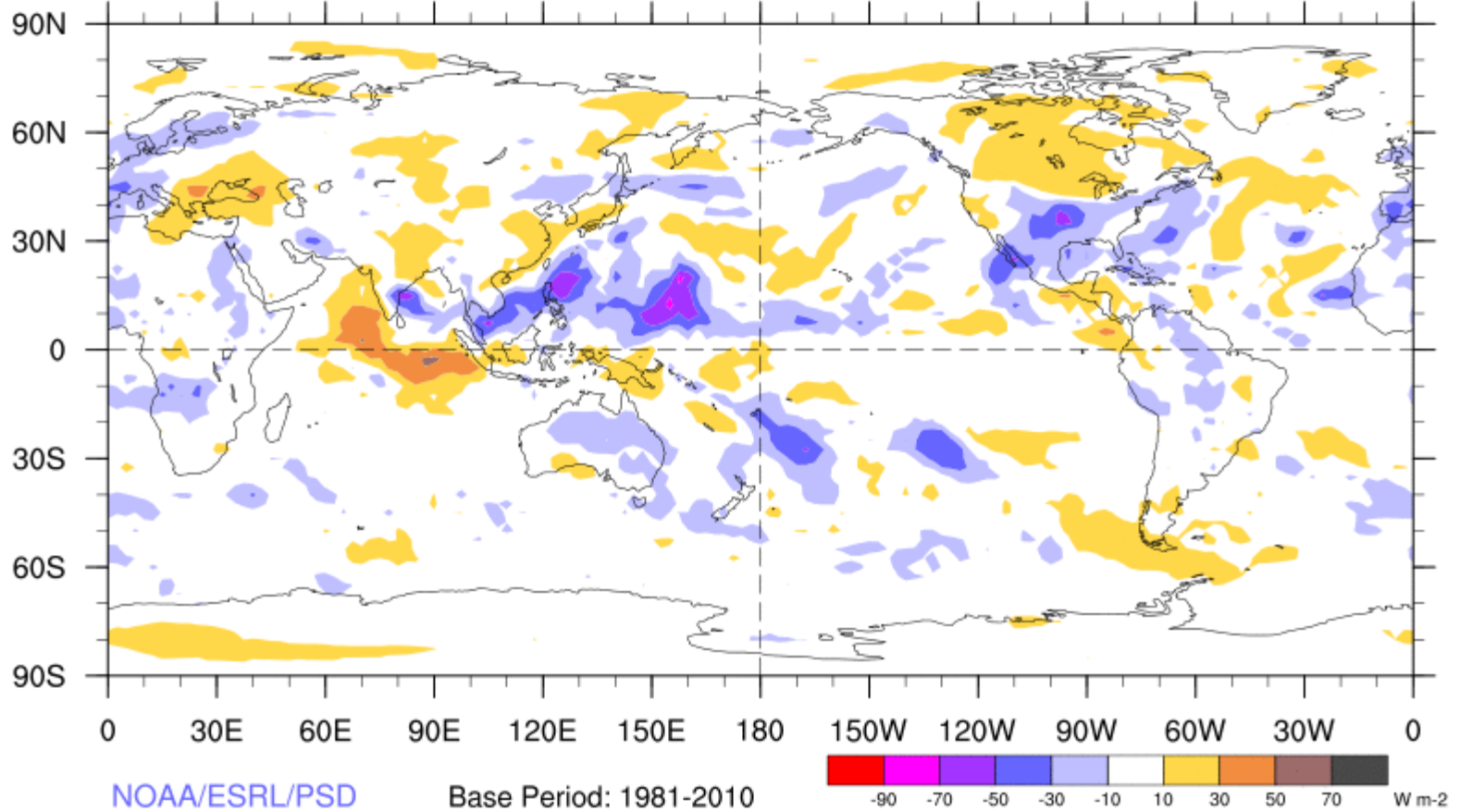
Jon Gottschalck

Outline

1. Review of Recent Conditions
2. Synopsis of Climate Modes
3. GTH Outlook and Forecast Discussion

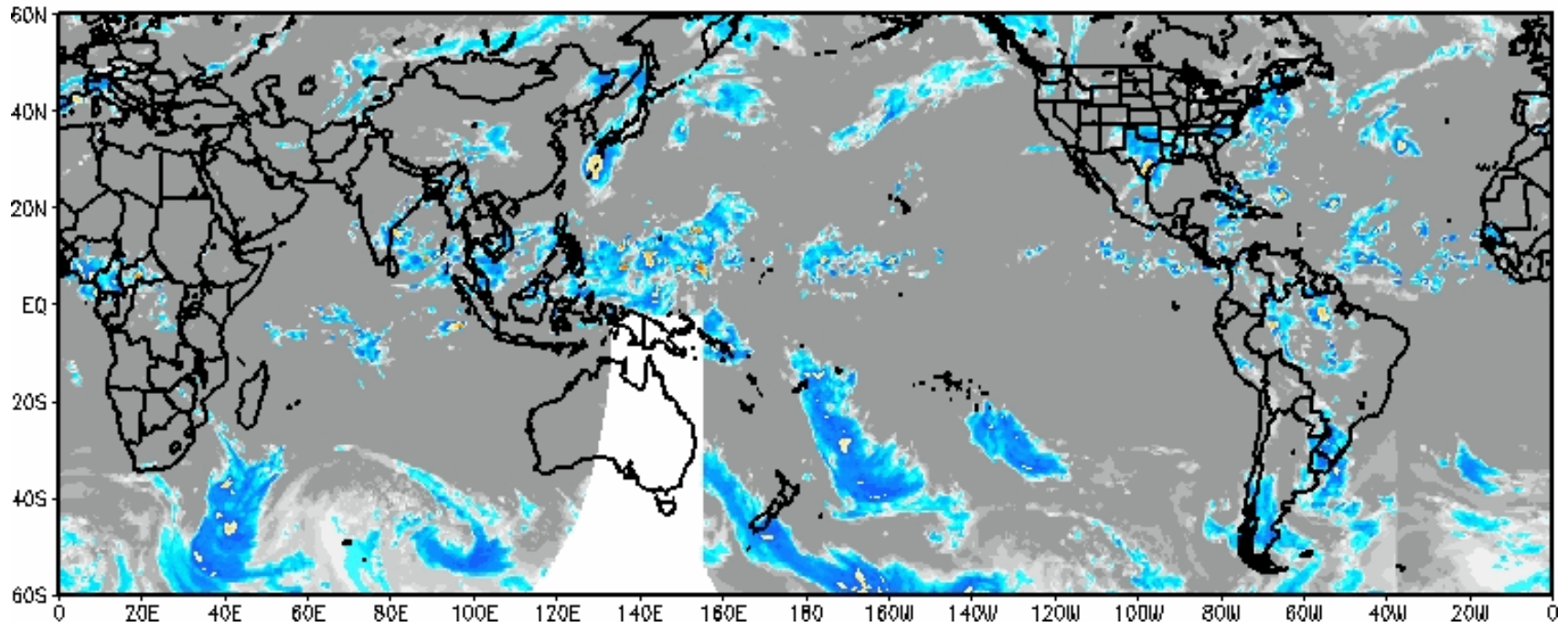
7-Day Average OLR Anomaly

2012/09/24 - 2012/09/30

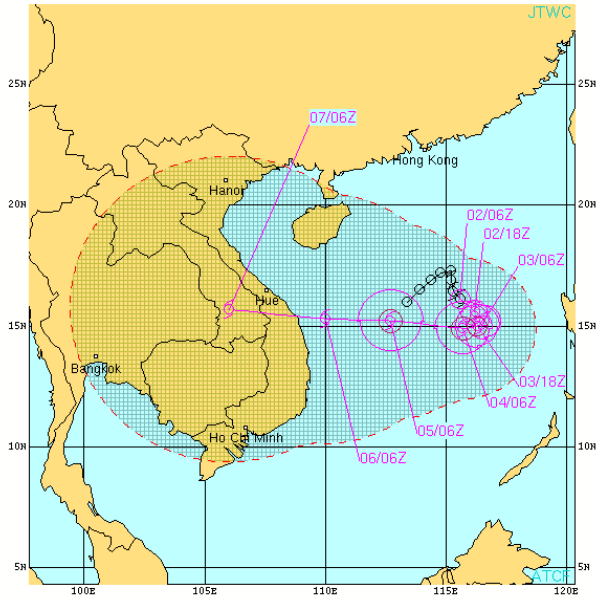


Weekly Satellite Review

IR Temperatures
0900 UTC 29 SEP 2012



Tropical Cyclone Review

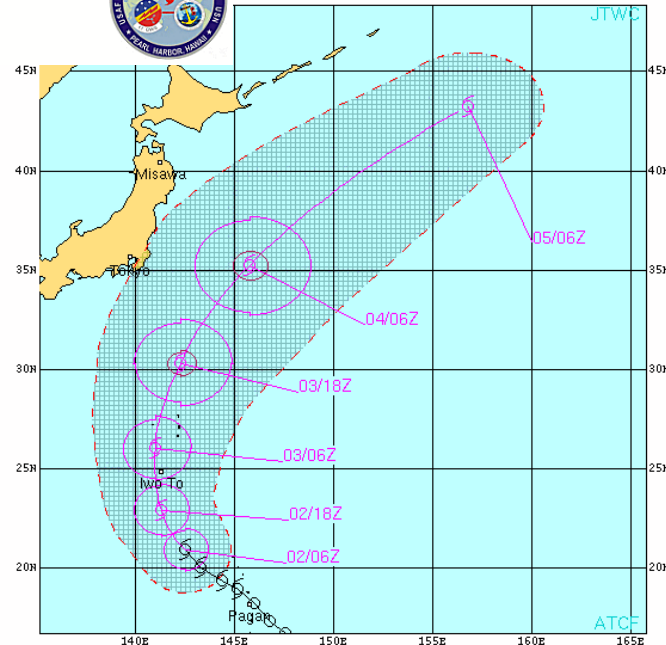


TROPICAL STORM 21W (GRETI) WARNING #4
 WTPH31 POTW 020900
 020600Z POSIT: NEAR 16.1N 115.6E
 MOVING 135 DEGREES TRUE AT 04 KNOTS
 MAXIMUM SIGNIFICANT WAVE HEIGHT: 15 FEET
 02/06Z, WINDS 040 KTS, GUSTS TO 050 KTS
 02/18Z, WINDS 045 KTS, GUSTS TO 055 KTS
 03/06Z, WINDS 050 KTS, GUSTS TO 065 KTS
 03/18Z, WINDS 055 KTS, GUSTS TO 070 KTS
 04/06Z, WINDS 060 KTS, GUSTS TO 075 KTS
 05/06Z, WINDS 060 KTS, GUSTS TO 075 KTS
 06/06Z, WINDS 050 KTS, GUSTS TO 065 KTS
 07/06Z, WINDS 040 KTS, GUSTS TO 050 KTS

CPA TO:	NM	DTG
MANILA	257	03/07Z
DA_NANG	32	06/18Z
HO_CHI MINH_CITY	287	06/23Z
HANOI	318	07/06Z

BEARING AND DISTANCE	DIR	DIST	TAU
MANILA	279	258	24
MANILA	274	308	48
DA_NANG	100	253	72

○ LESS THAN 34 KNOTS
 ⊙ 34-63 KNOTS
 ⊛ MORE THAN 63 KNOTS
 † PAST 6 HOURLY CYCLONE POSITS IN BLACK
 ○ FORECAST CYCLONE POSITS IN COLOR



TROPICAL STORM 20W (MALIKSI) WARNING #8
 WTPH32 POTW 020900
 020600Z POSIT: NEAR 20.9N 142.5E
 MOVING 320 DEGREES TRUE AT 12 KNOTS
 MAXIMUM SIGNIFICANT WAVE HEIGHT: 18 FEET
 02/06Z, WINDS 040 KTS, GUSTS TO 050 KTS
 02/18Z, WINDS 045 KTS, GUSTS TO 055 KTS
 03/06Z, WINDS 050 KTS, GUSTS TO 065 KTS
 03/18Z, WINDS 055 KTS, GUSTS TO 070 KTS
 04/06Z, WINDS 060 KTS, GUSTS TO 075 KTS
 05/06Z, WINDS 045 KTS, GUSTS TO 055 KTS

CPA TO:	NM	DTG
IWO_JIMA	18	03/02Z
CHIHI_JIMA	55	03/10Z
CAMP_FUJI	313	04/00Z
ATSUGI	269	04/01Z
CAMP_ZAMA	269	04/01Z
YOKOSUKA	251	04/01Z
YOKOTA_AB	275	04/01Z
NARITA_AIRPORT	233	04/02Z
MISAWA	365	04/10Z

BEARING AND DISTANCE	DIR	DIST	TAU
CHIHI_JIMA	225	32	24
IWO_JIMA	347	74	24
ATSUGI	031	314	48
CAMP_FUJI	088	373	48
CAMP_ZAMA	031	314	48
MISAWA	144	331	48
NARITA_AIRPORT	095	266	48
YOKOSUKA	083	239	48
YOKOTA_AB	034	314	48

○ LESS THAN 34 KNOTS
 ⊙ 34-63 KNOTS
 ⊛ MORE THAN 63 KNOTS
 † PAST 6 HOURLY CYCLONE POSITS IN BLACK
 ○ FORECAST CYCLONE POSITS IN COLOR

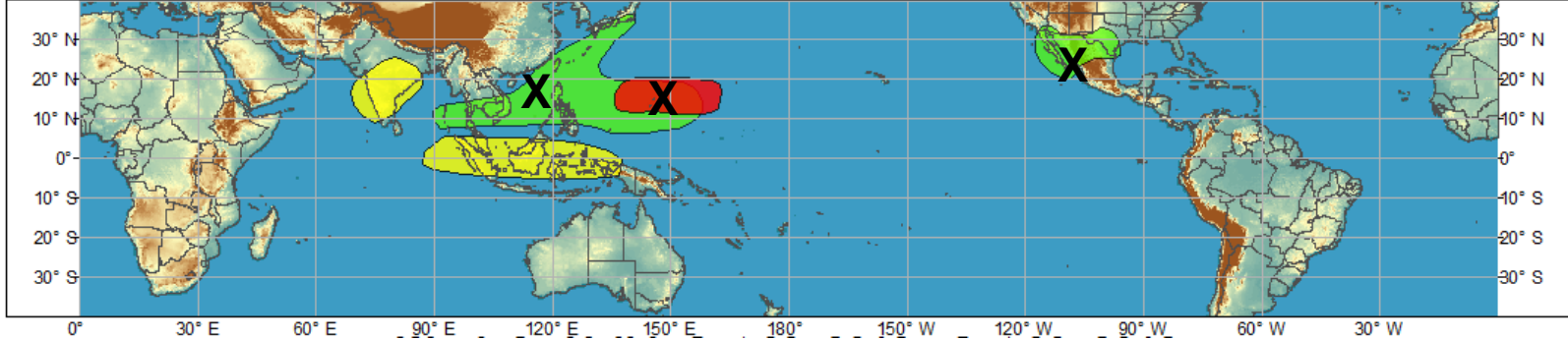




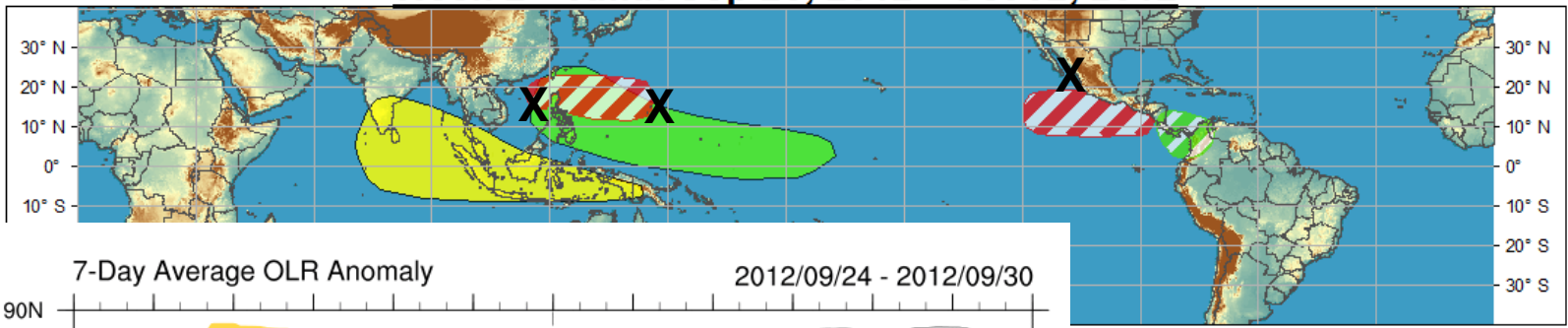
Global Tropical Hazards/Benefits Outlook - Climate Prediction Center



Week 1 - Valid: Sep 26, 2012 - Oct 02, 2012

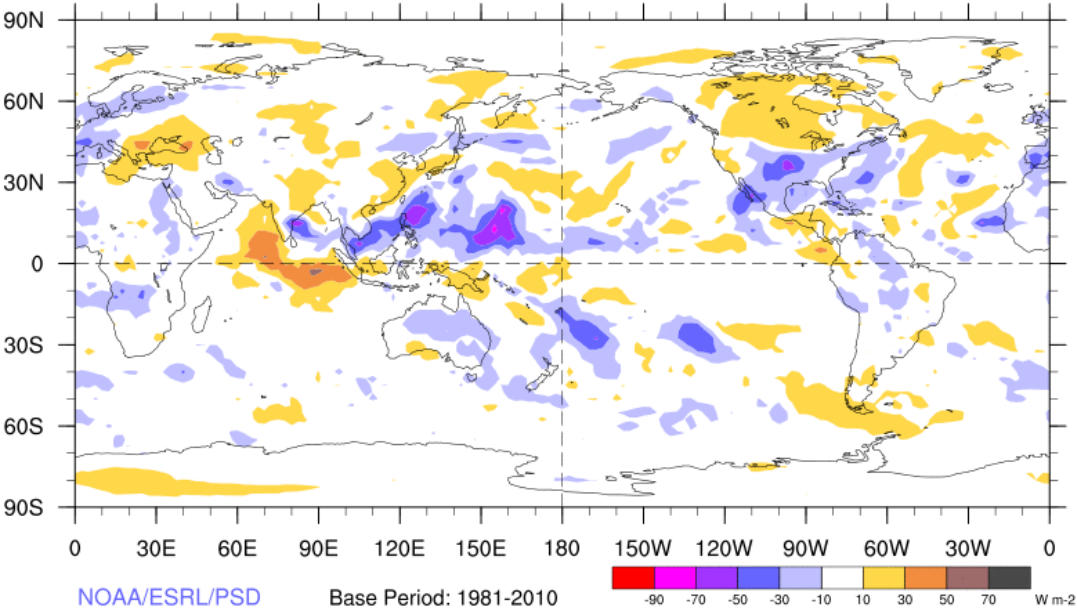


Week 2 - Valid: Sep 26, 2012 - Oct 02, 2012



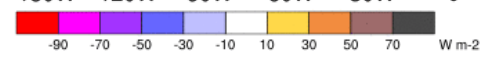
7-Day Average OLR Anomaly

2012/09/24 - 2012/09/30



NOAA/ESRL/PSD

Base Period: 1981-2010



Outlook Review

Synopsis of Climate Modes

ENSO:

- ENSO-neutral conditions continue. The new ENSO Diagnostic discussion will be released next Thursday 10/4.

MJO and other subseasonal variability:

- The MJO remained weak with any enhanced phase remaining over the western Pacific and at this time the MJO is forecast to remain weak over the period.
- Atmospheric Kelvin wave activity may elevate the chances for tropical cyclogenesis across the eastern Pacific during parts of the period but confidence is somewhat low.

Extratropics:

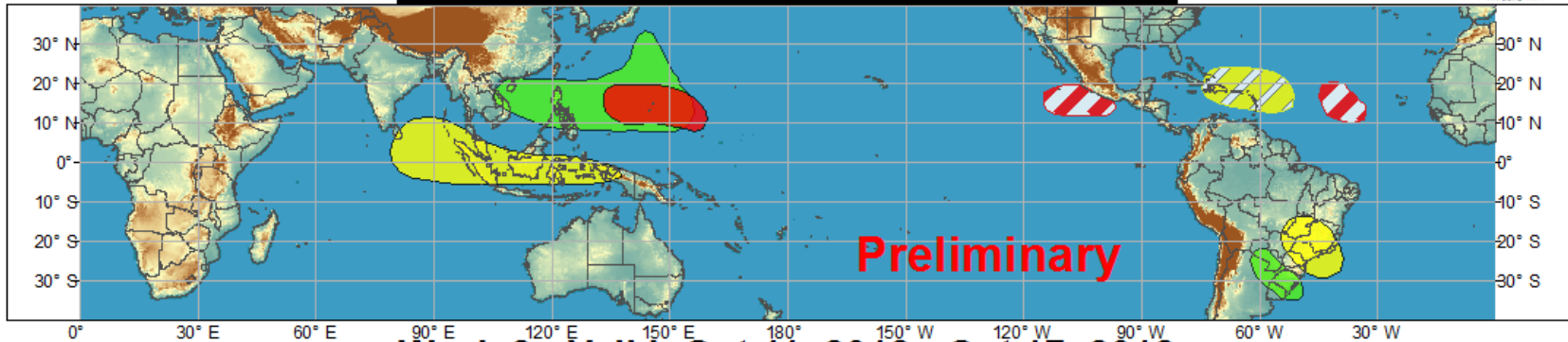
- Recurving western Pacific tropical cyclones still a factor for the PNA sector but there is much better agreement in mid-latitude model guidance this week.



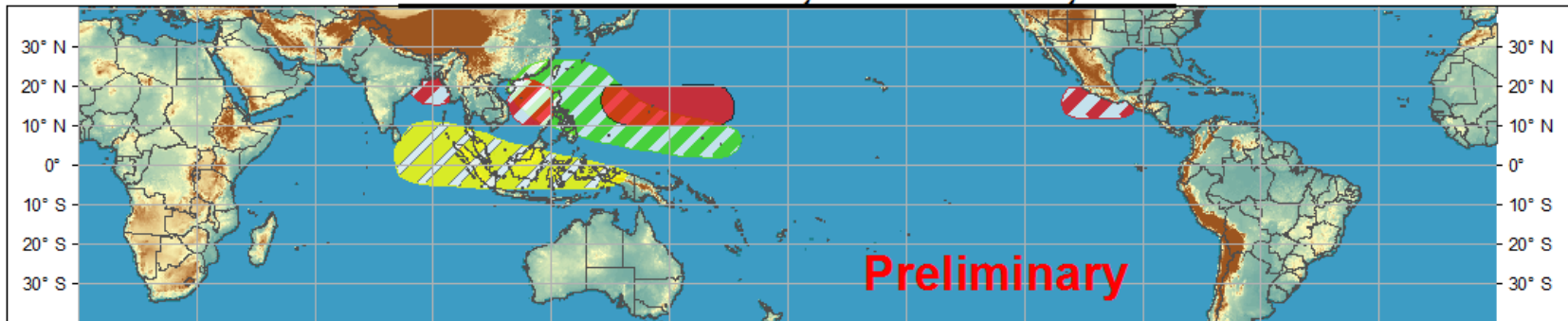
Global Tropical Hazards/Benefits Outlook - Climate Prediction Center



Week 1 - Valid: Oct 04, 2012 - Oct 10, 2012













Week 2 - Valid: Oct 11, 2012 - Oct 17, 2012



Confidence

High Moderate

- | | | |
|-----------------------------------|---|--|
| Tropical Cyclone Formation |   | Development of a tropical cyclone that eventually reaches tropical storm/cyclone strength. |
| Above-average rainfall |   | Weekly total rainfall in the upper third of the historical range. |
| Below-average rainfall |   | Weekly total rainfall in the lower third of the historical range. |
| Above-normal temperatures |   | 7-day mean temperatures in the upper third of the historical range. |
| Below-normal temperatures |   | 7-day mean temperatures in the lower third of the historical range. |

Produced: 10/02/2012

Forecaster: Gottschalck

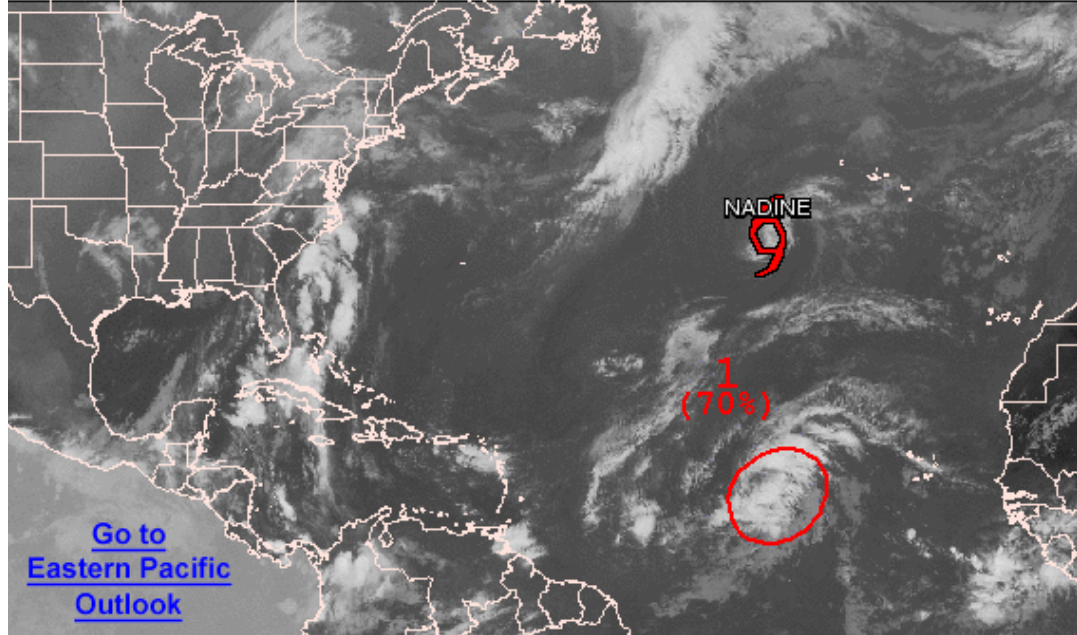
Product is updated once per week. The product targets broad scale conditions integrated over a 7-day period for US interests only. Consult your local responsible forecast agency.





Graphical Tropical Weather Outlook

National Hurricane Center Miami, Florida



[Go to Eastern Pacific Outlook](#)

800 AM EDT TUE OCT 2 2012

Satellite Image: 0730 AM EDT

Outlined areas denote current position of systems discussed in the Tropical Weather Outlook. Color indicates probability of tropical cyclone formation within 48 hours.

- Low <30%
- Medium 30-50%
- High >50%

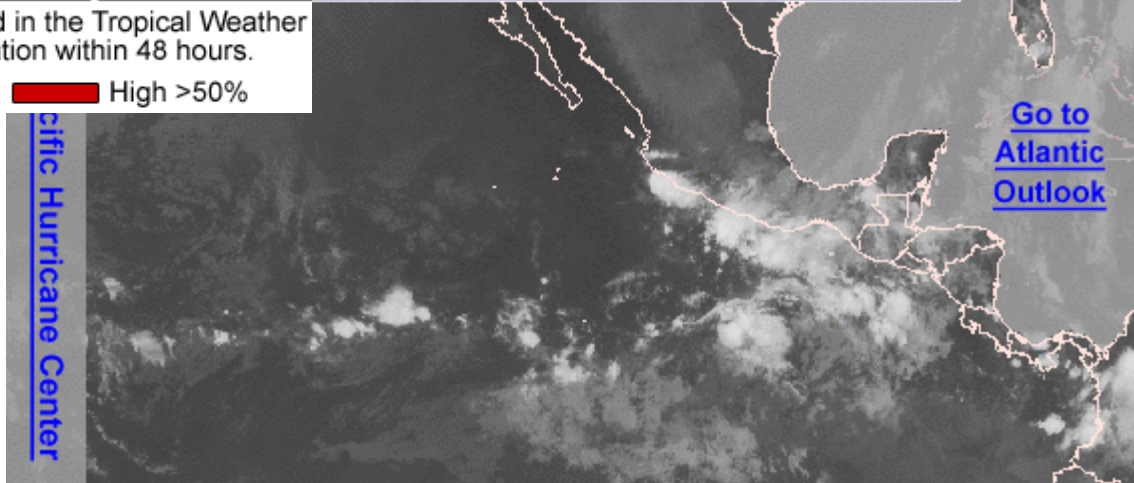
Graphical Tropical Weather Outlook

National Hurricane Center Miami, Florida



Tropical Cyclone Activity is Not Expected During the Next 48 Hours

[Go to Atlantic Outlook](#)



500 AM PDT TUE OCT 2 2012

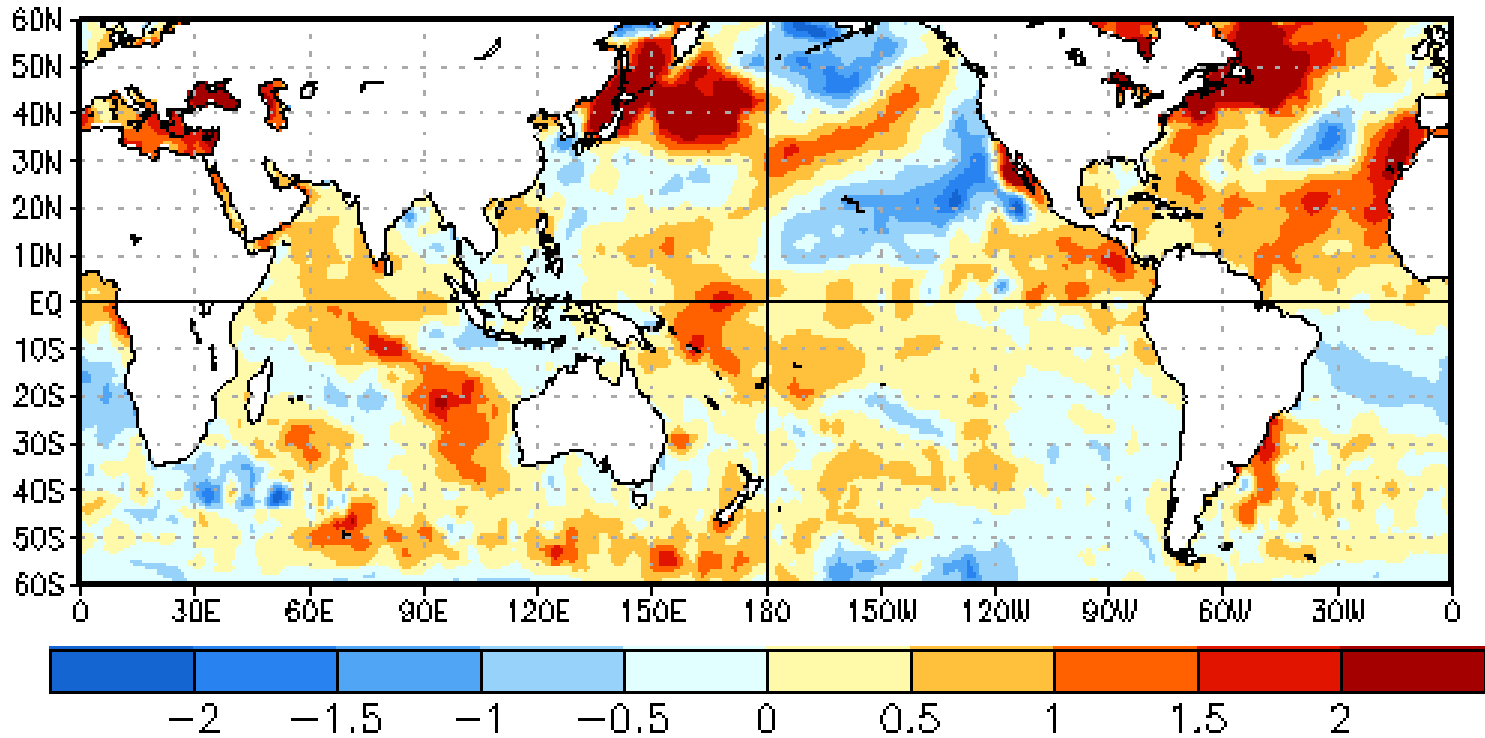
Satellite Image: 0352 AM PDT

Outlined areas denote current position of systems discussed in the Tropical Weather Outlook. Color indicates probability of tropical cyclone formation within 48 hours.

- Low <30%
- Medium 30-50%
- High >50%

SST Observations

26 SEP 2012

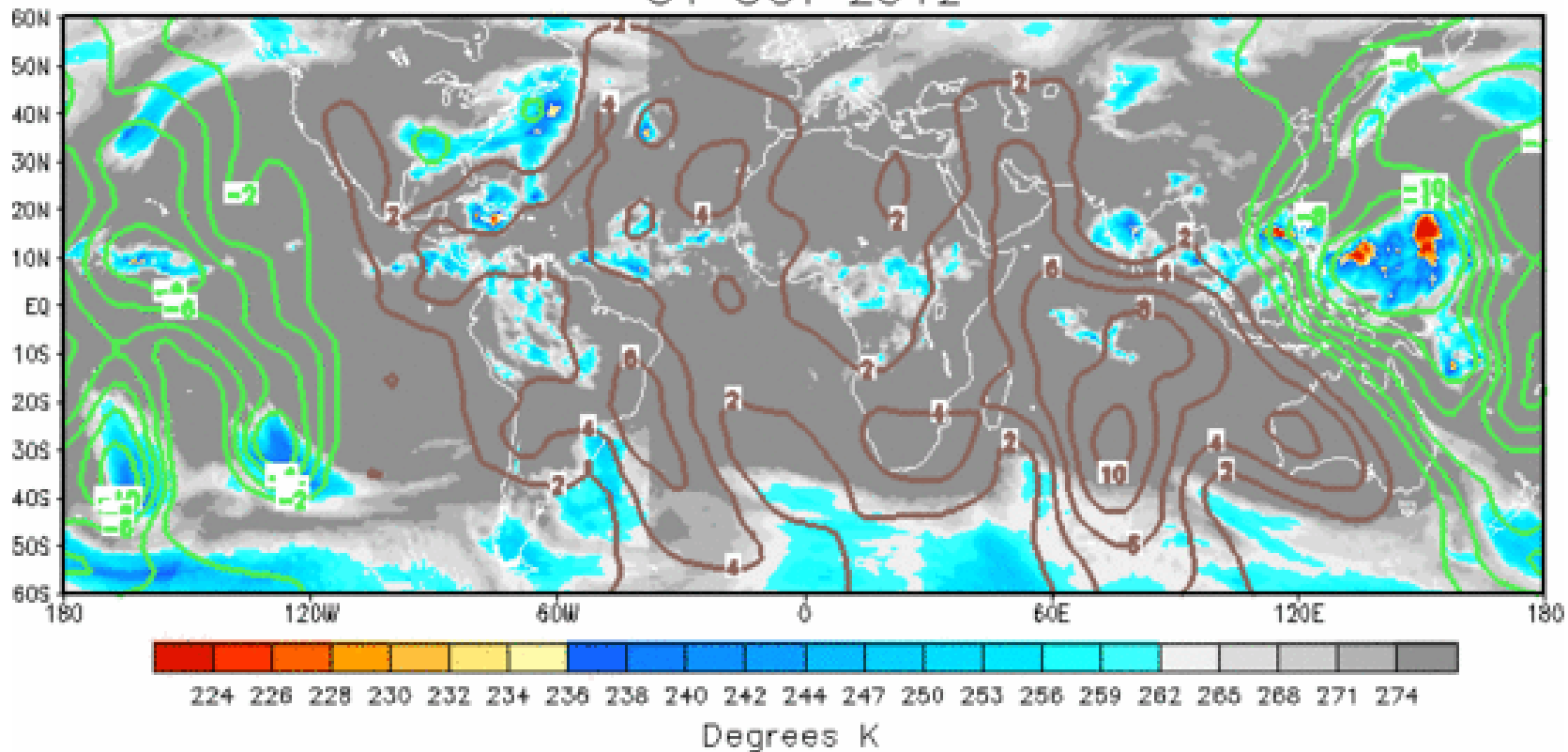


IR Satellite & 200-hpa Velocity Potential Anomalies

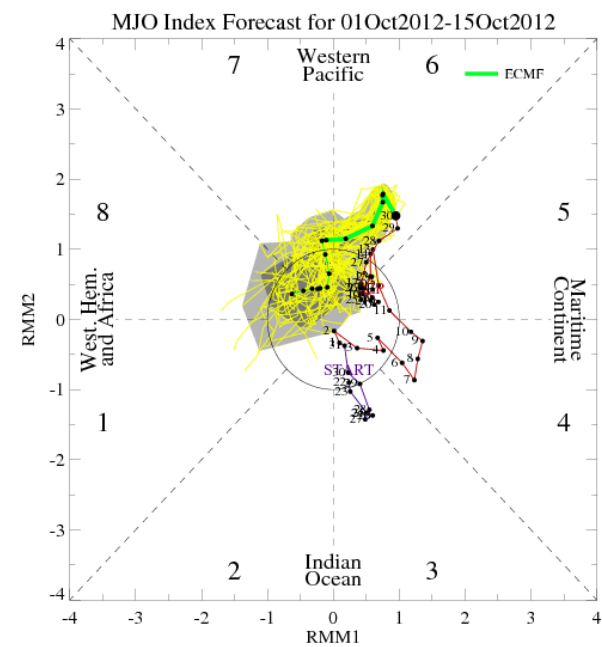
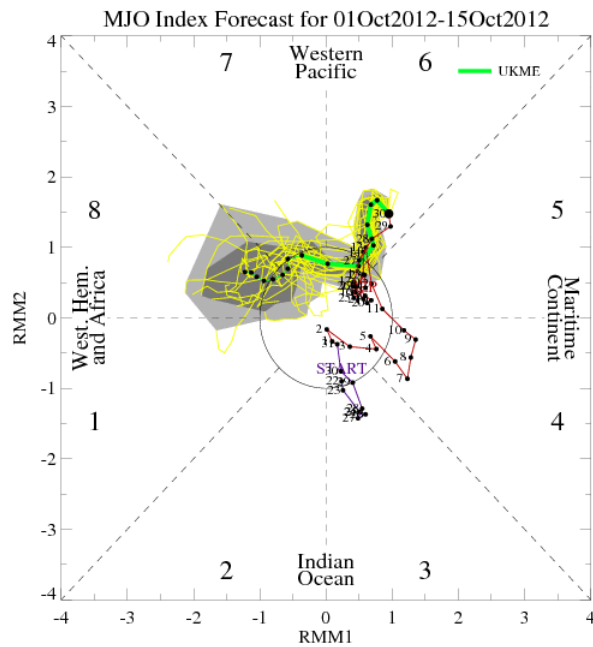
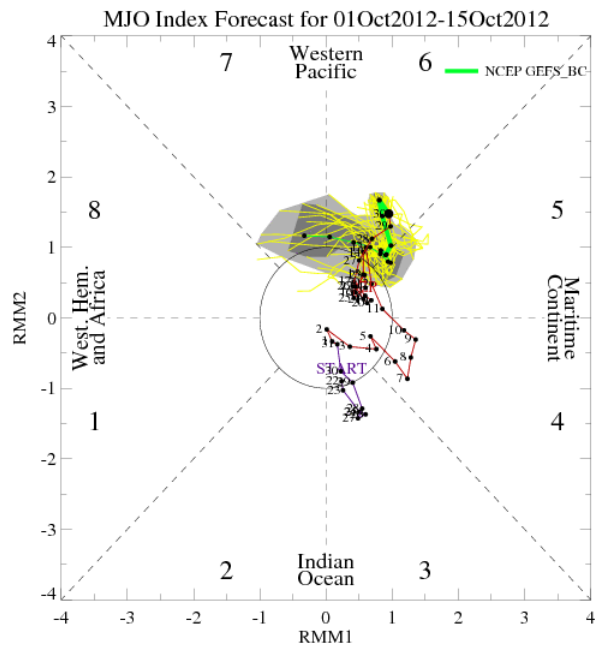
Green: Enhanced Divergence

Brown: Enhanced Convergence

01 OCT 2012

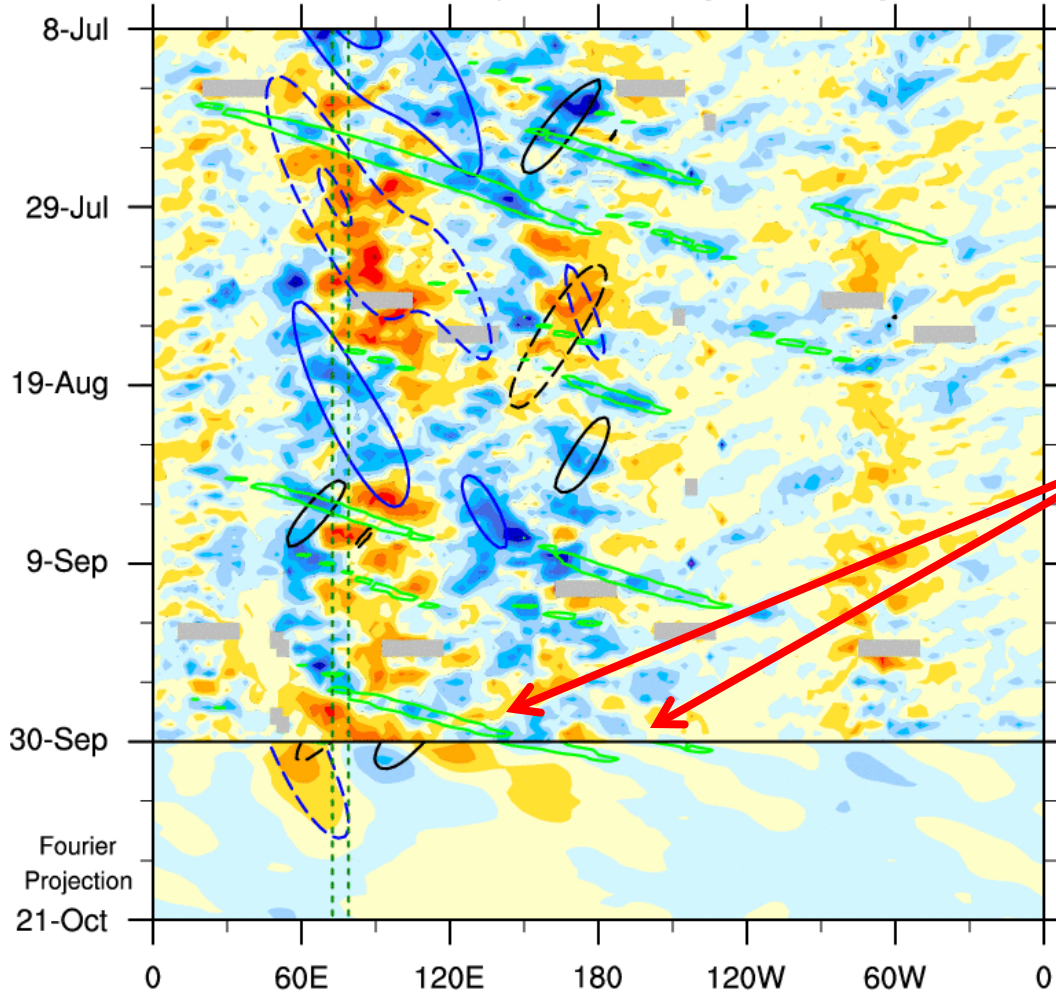


MJO Observation/Forecast



OLR anomalies: 7.5°S - 7.5°N

8-Jul-2012 to 30-Sep-2012 + 21-day Fourier Projection



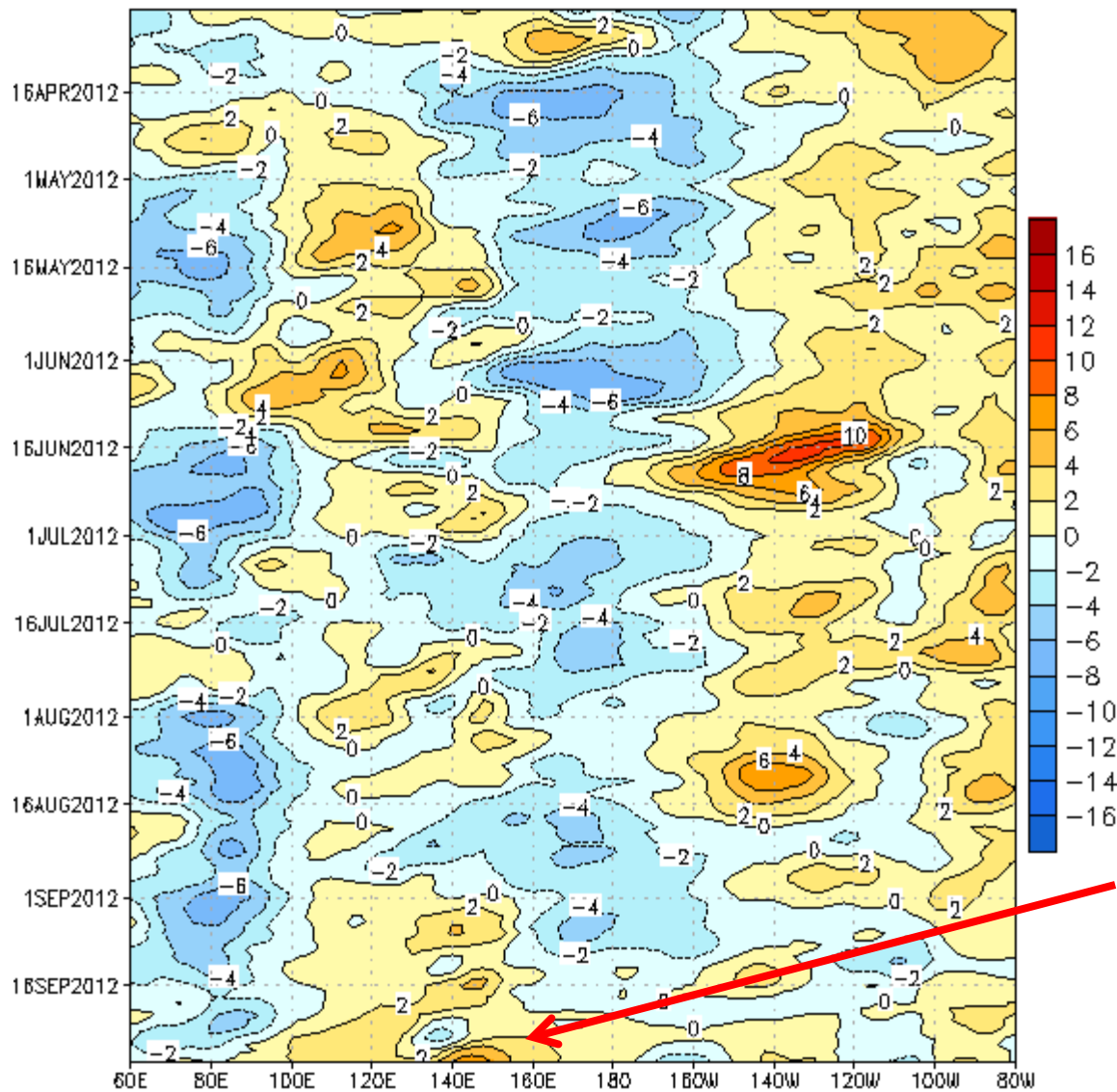
Atmospheric Kelvin waves

Obs: W/m² -84 -72 -60 -48 -36 -24 -12 0 12 24 36 48 60 72 84

Sum of Waves: W/m² -18 -12 -6 0 6 12 18

MJO (blue, CINT=12); ER (black, CINT=12); Kelvin (green, CINT=12)

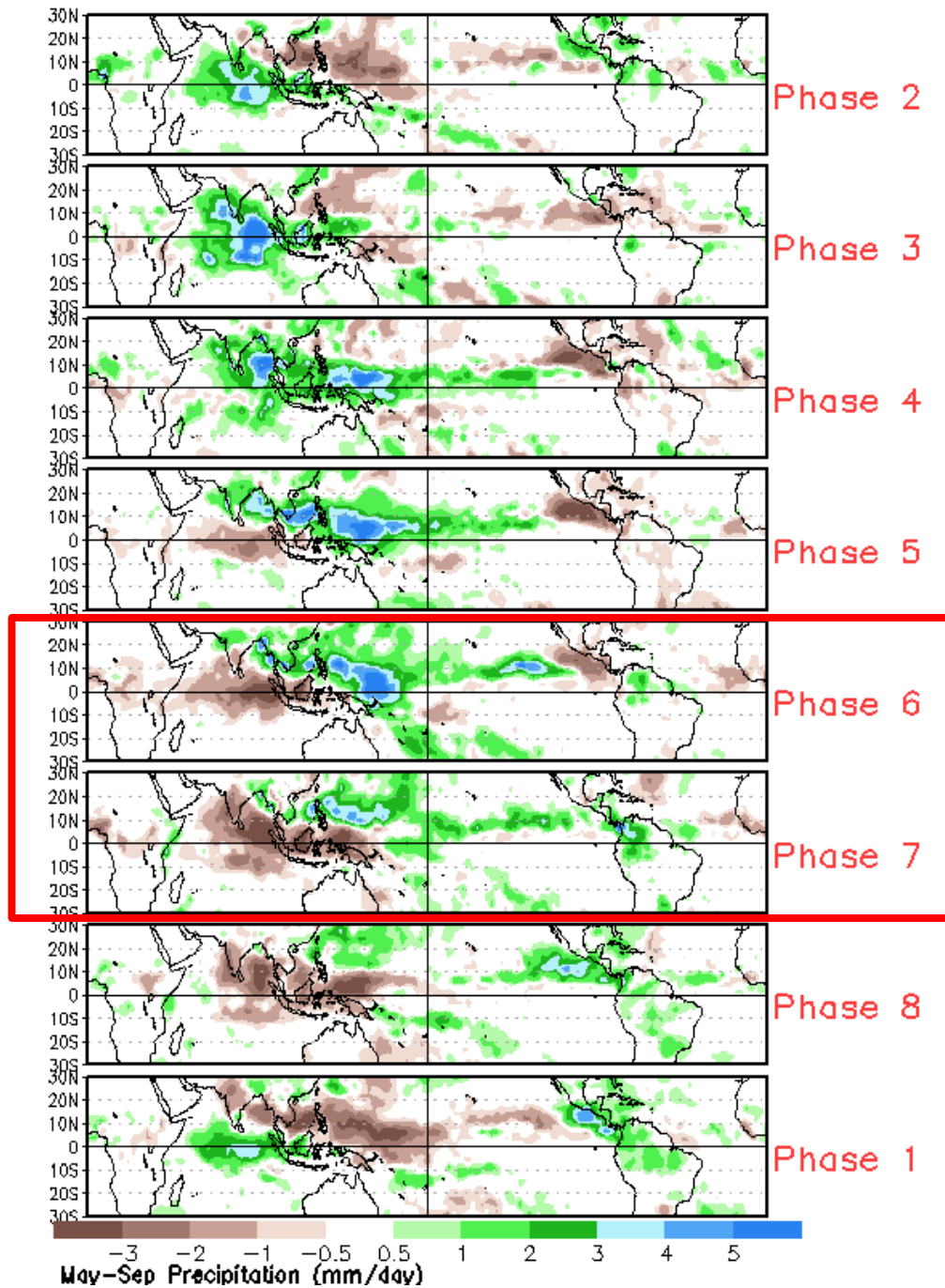
CDAS 850-hPa U Anoms. (5N-5S)

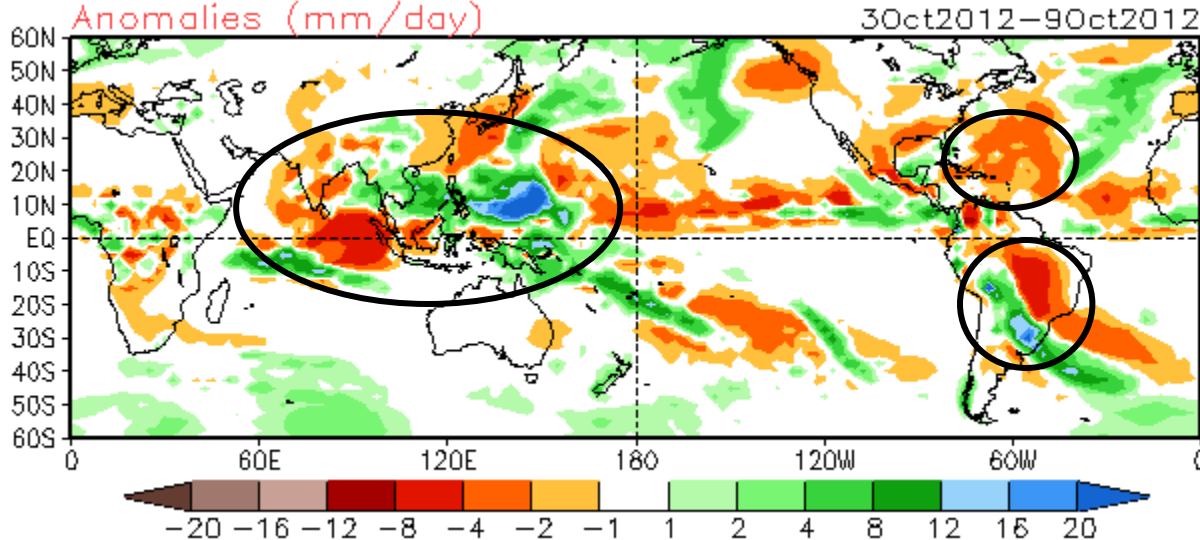


Westerly wind burst,
some help for El Nino?

Data updated through 29 SEP 2012

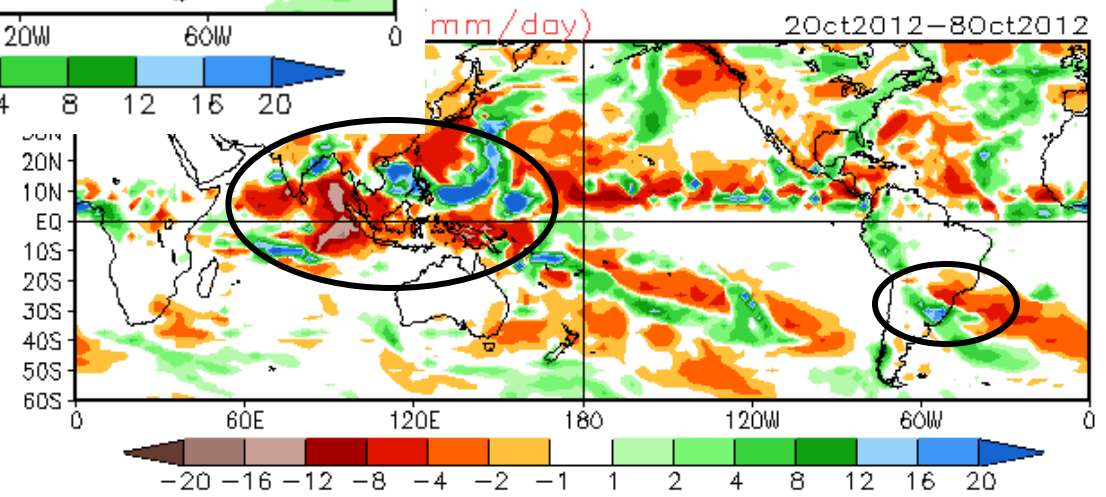
Average Conditions when the MJO is present (May-Sep)



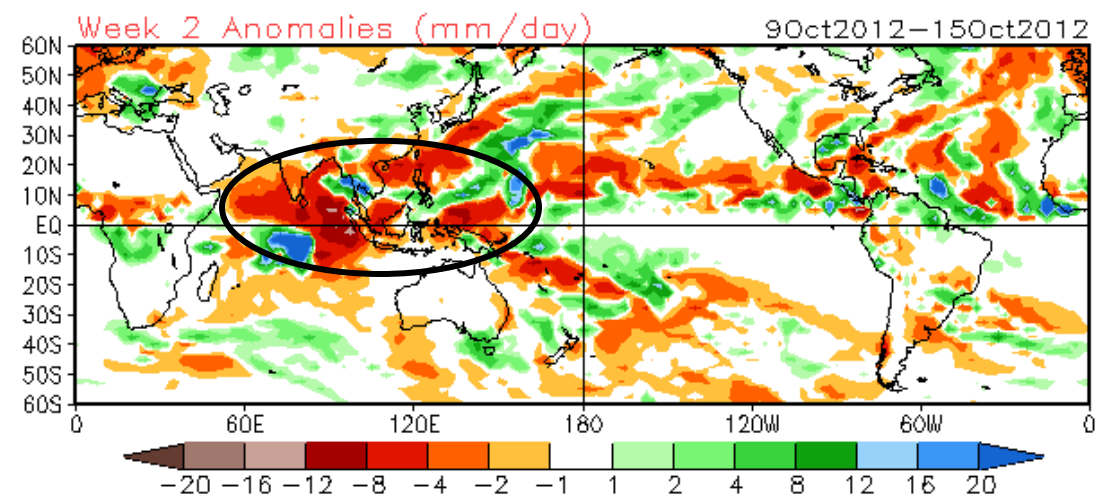


GFS - Week-1

Weeks 1 & 2 Precipitation
Available Mean Forecast from 01Oct2012

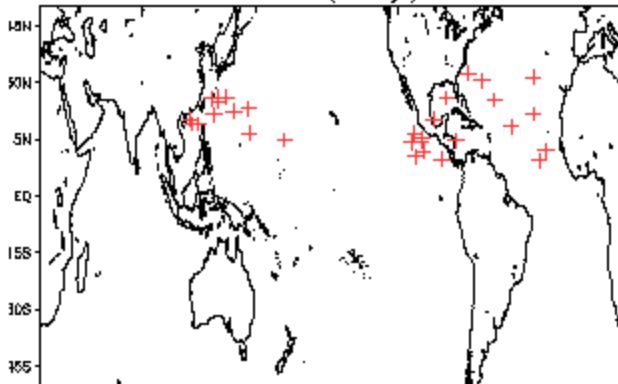


CFS - Week-1 and Week-2

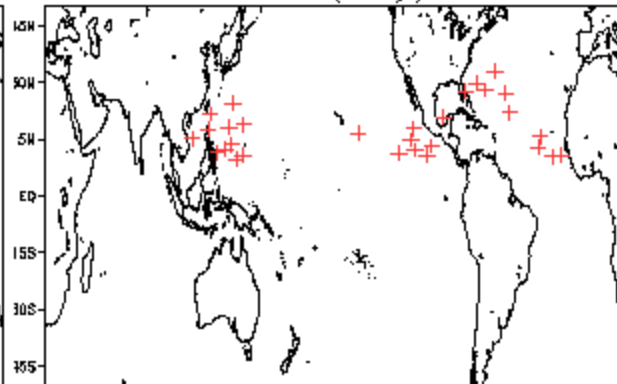


September Tropical Storm Formation by MJO phase

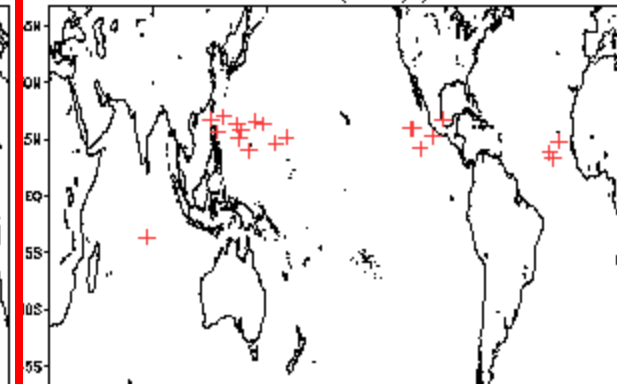
Phase 1 (81 days) 31 storms



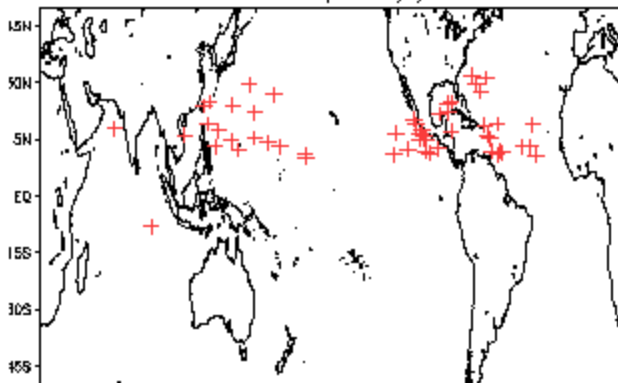
Phase 4 (70 days) 30 storms



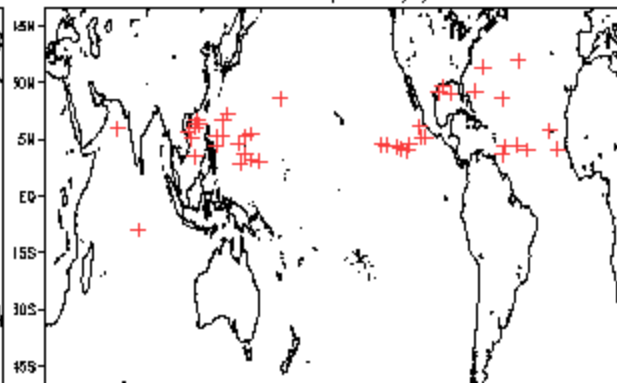
Phase 7 (38 days) 22 storms



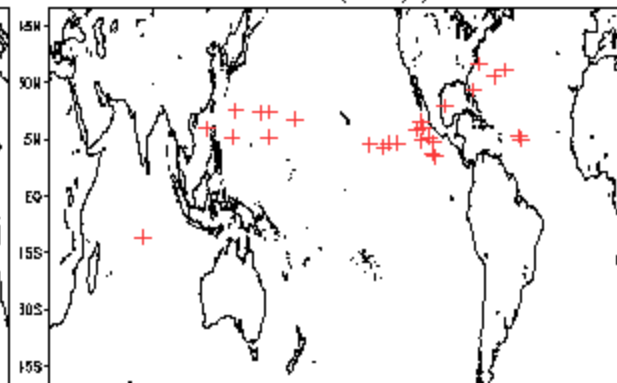
Phase 2 (122 days) 56 storms



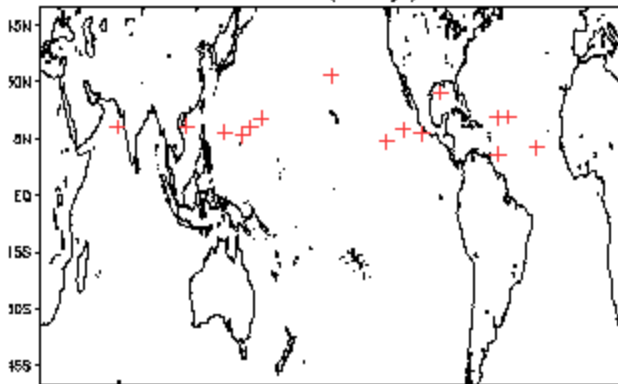
Phase 5 (106 days) 45 storms



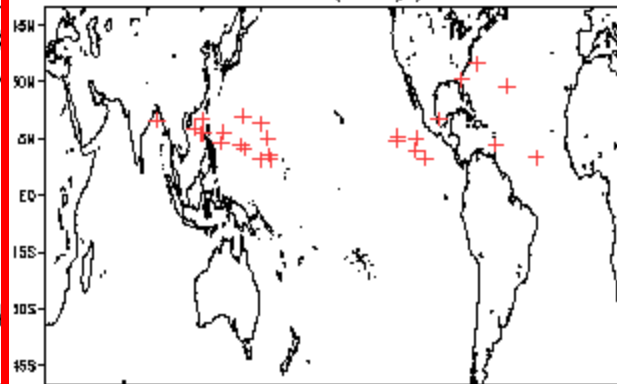
Phase 8 (67 days) 29 storms



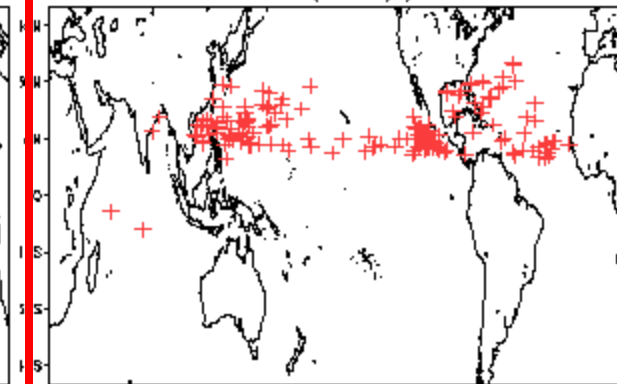
Phase 3 (51 days) 16 storms



Phase 6 (61 days) 27 storms

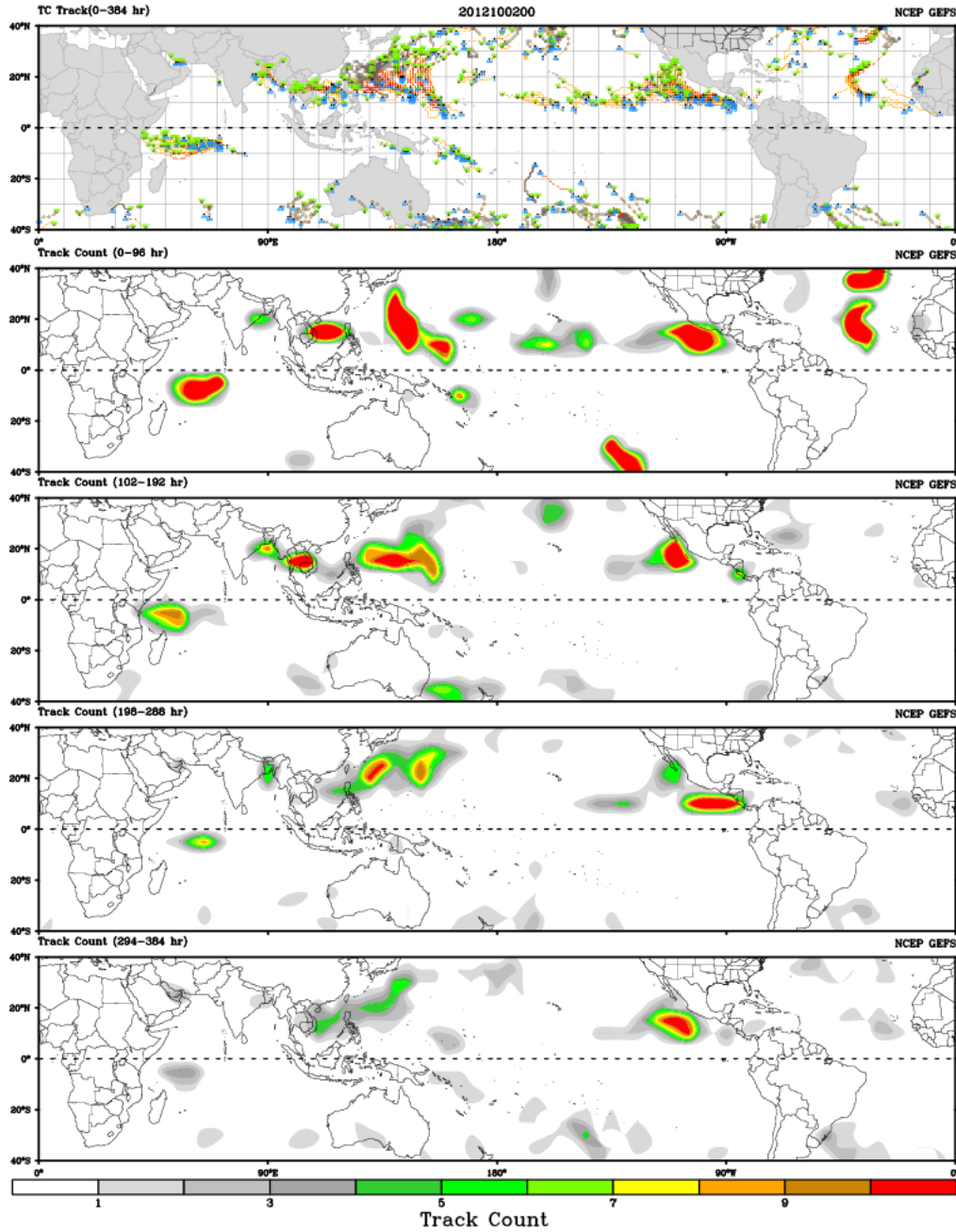


Null (393 days) 169 storms

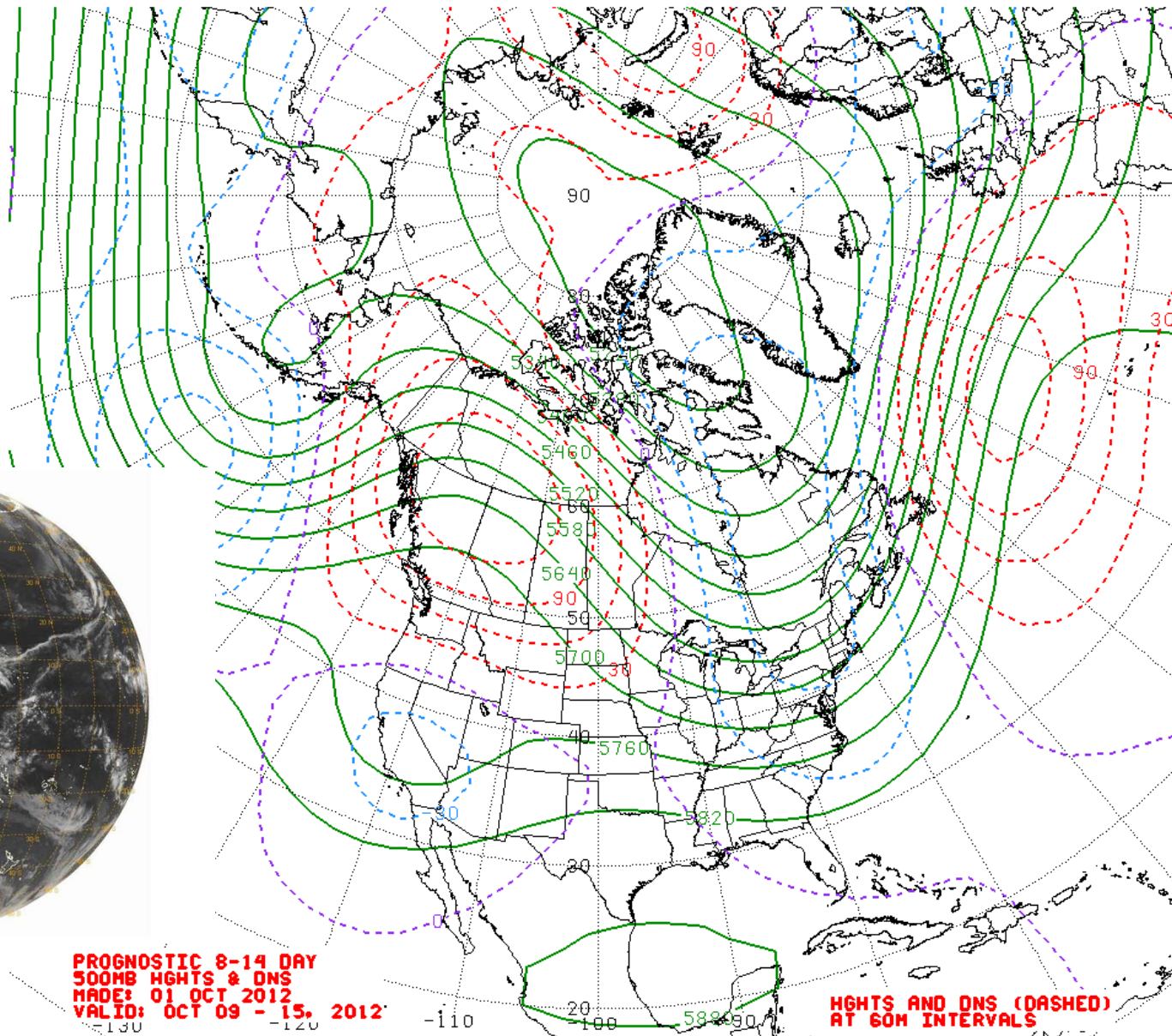


Ensemble GFS TC Guidance

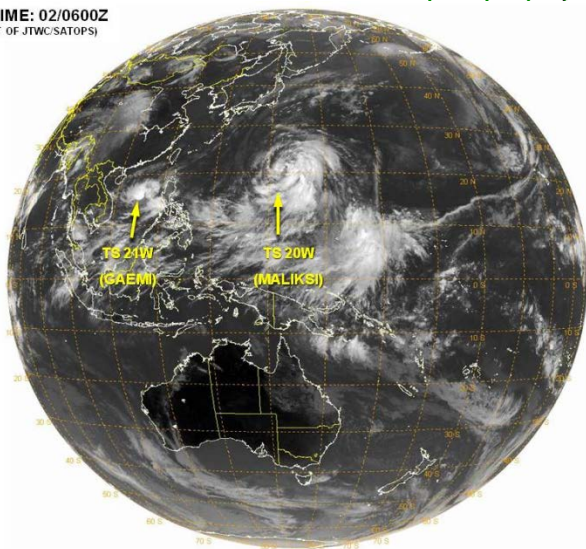
CWB TC Tracker for NCEP GEFS (Fuzzy_Basic)



Week 2 500-hPa Manual Chart



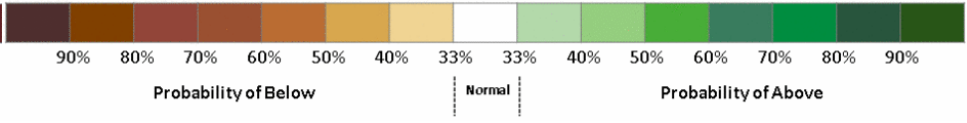
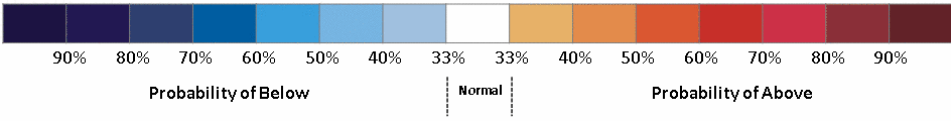
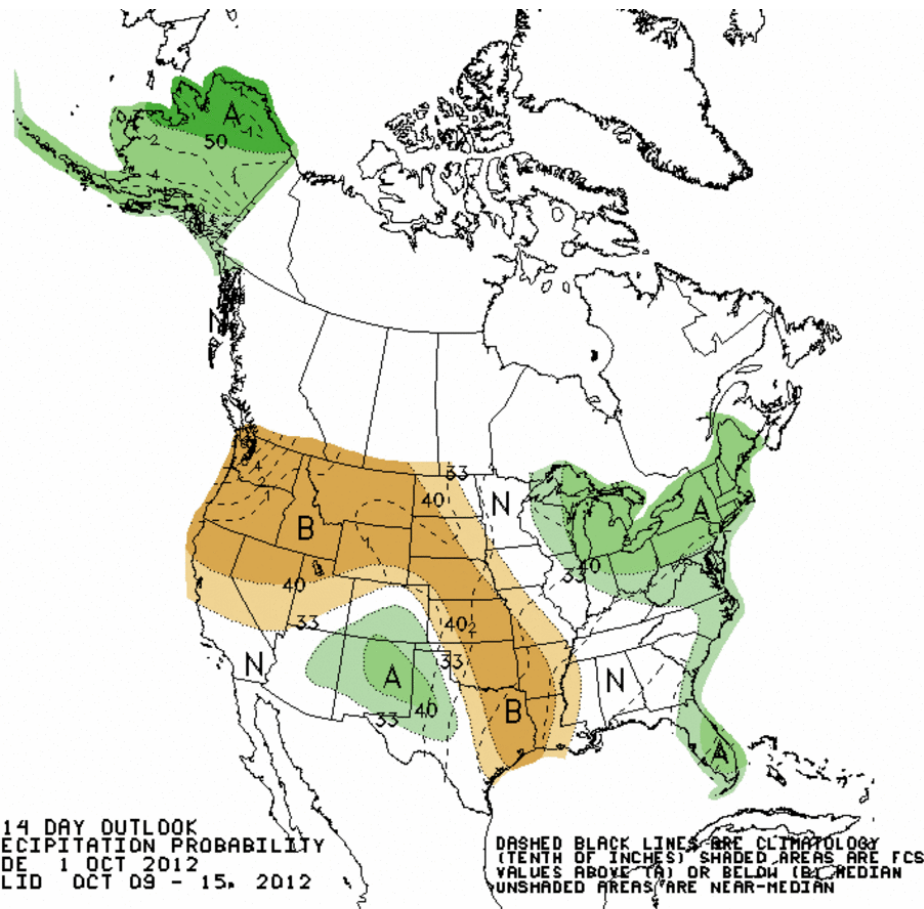
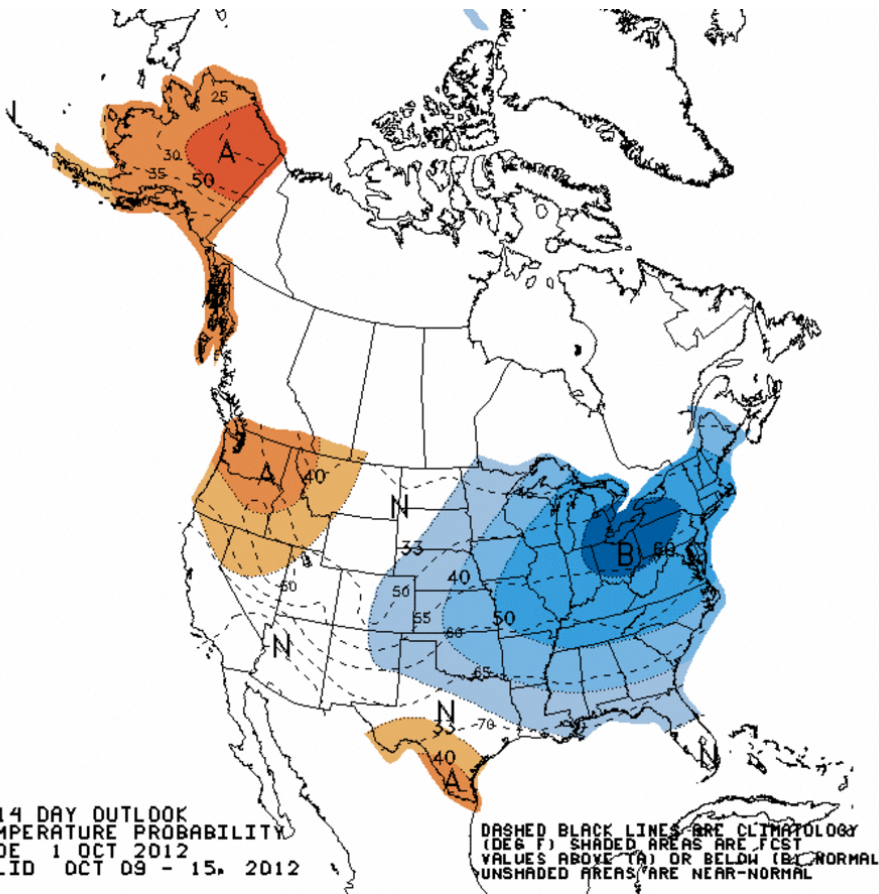
VALID TIME: 02/0600Z
(PRODUCT OF JTWC SATOPS)



**PROGNOSTIC 8-14 DAY
500MB HGHTS & DNS
MADE: 01 OCT 2012
VALID: OCT 09 - 15, 2012**

**HGHTS AND DNS (DASHED)
AT 60M INTERVALS**

Week 2 -- Temperature and Precipitation

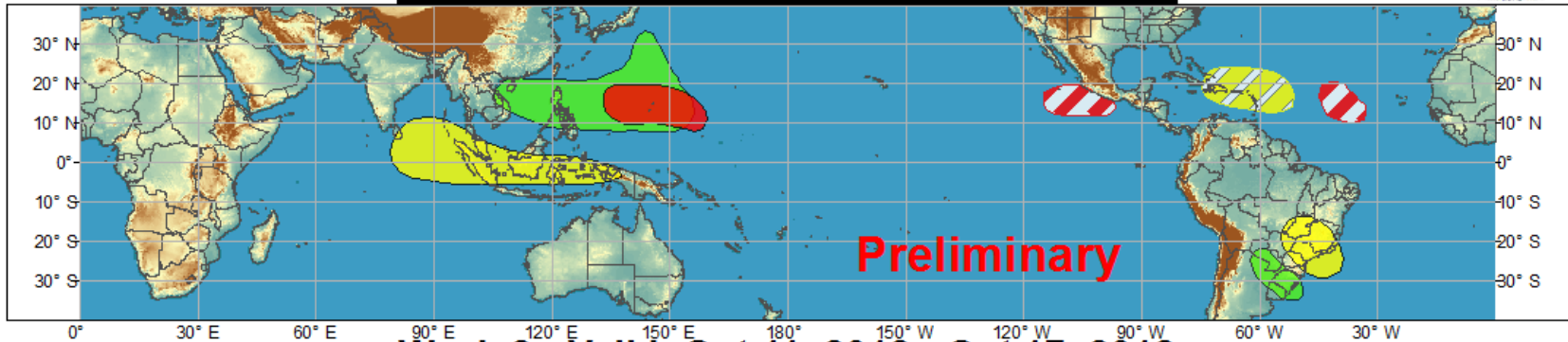




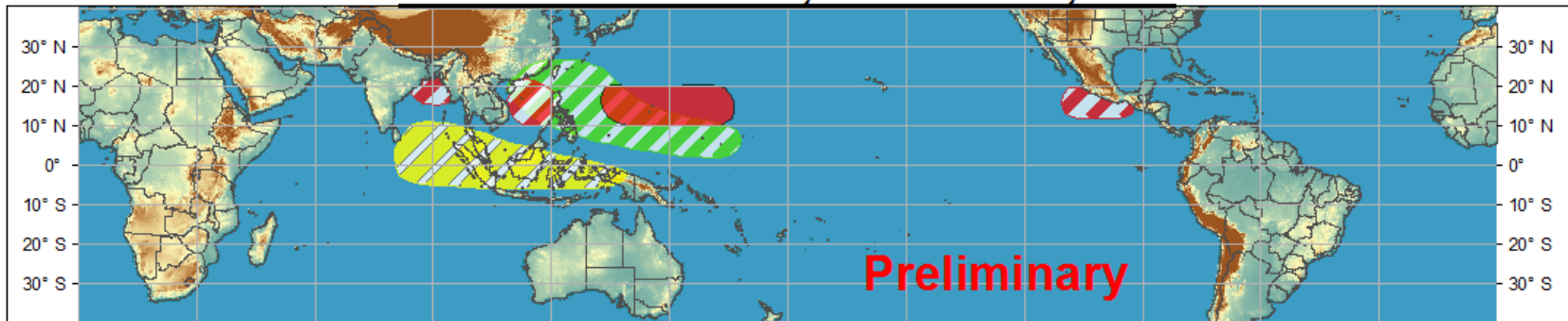
Global Tropical Hazards/Benefits Outlook - Climate Prediction Center



Week 1 - Valid: Oct 04, 2012 - Oct 10, 2012













Week 2 - Valid: Oct 11, 2012 - Oct 17, 2012



Confidence

High Moderate

- | | | |
|-----------------------------------|---|--|
| Tropical Cyclone Formation |   | Development of a tropical cyclone that eventually reaches tropical storm/cyclone strength. |
| Above-average rainfall |   | Weekly total rainfall in the upper third of the historical range. |
| Below-average rainfall |   | Weekly total rainfall in the lower third of the historical range. |
| Above-normal temperatures |   | 7-day mean temperatures in the upper third of the historical range. |
| Below-normal temperatures |   | 7-day mean temperatures in the lower third of the historical range. |

Produced: 10/02/2012

Forecaster: Gottschalck

Product is updated once per week. The product targets broad scale conditions integrated over a 7-day period for US interests only. Consult your local responsible forecast agency.

