

# Global Tropics Hazards And Benefits Outlook

November 6, 2012

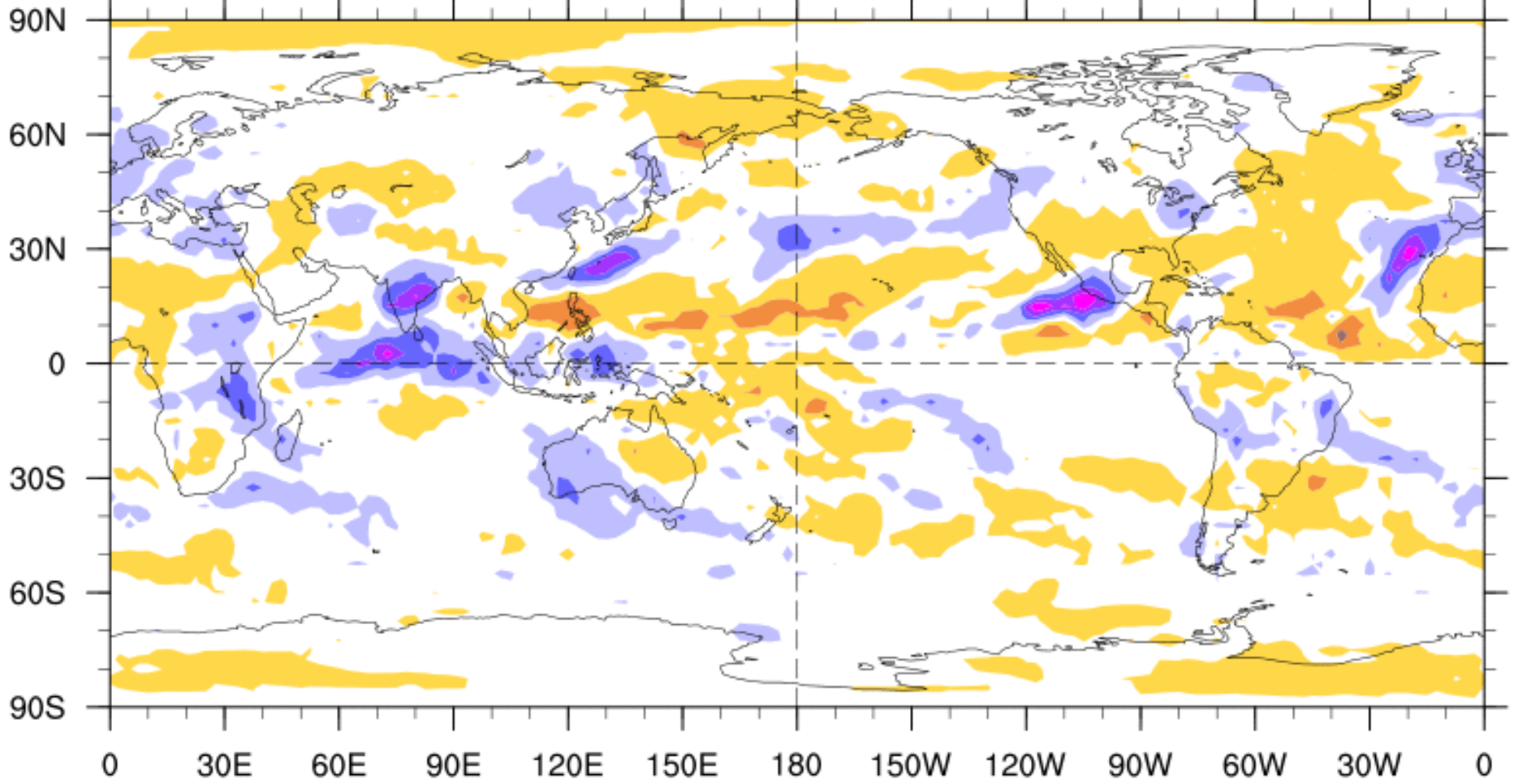
Brad Pugh

## Outline

1. Review of Recent Conditions
2. Synopsis of Climate Modes
3. GTH Outlook and Forecast Discussion

# 7-Day Average OLR Anomaly

2012/10/29 - 2012/11/04



NOAA/ESRL/PSD

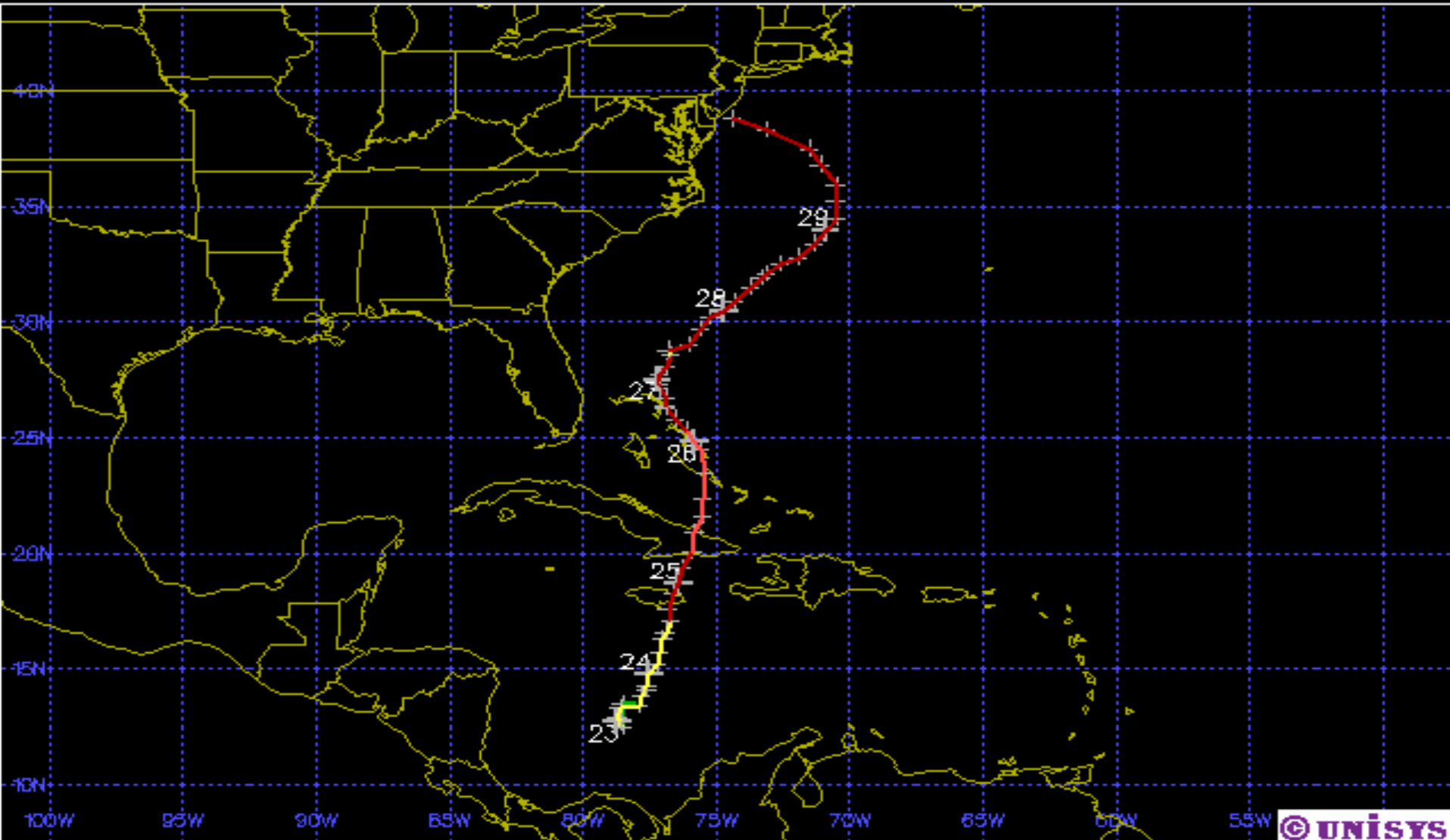
Base Period: 1981-2010



# Tropical Cyclone Review

Hurricane-2 SANDY

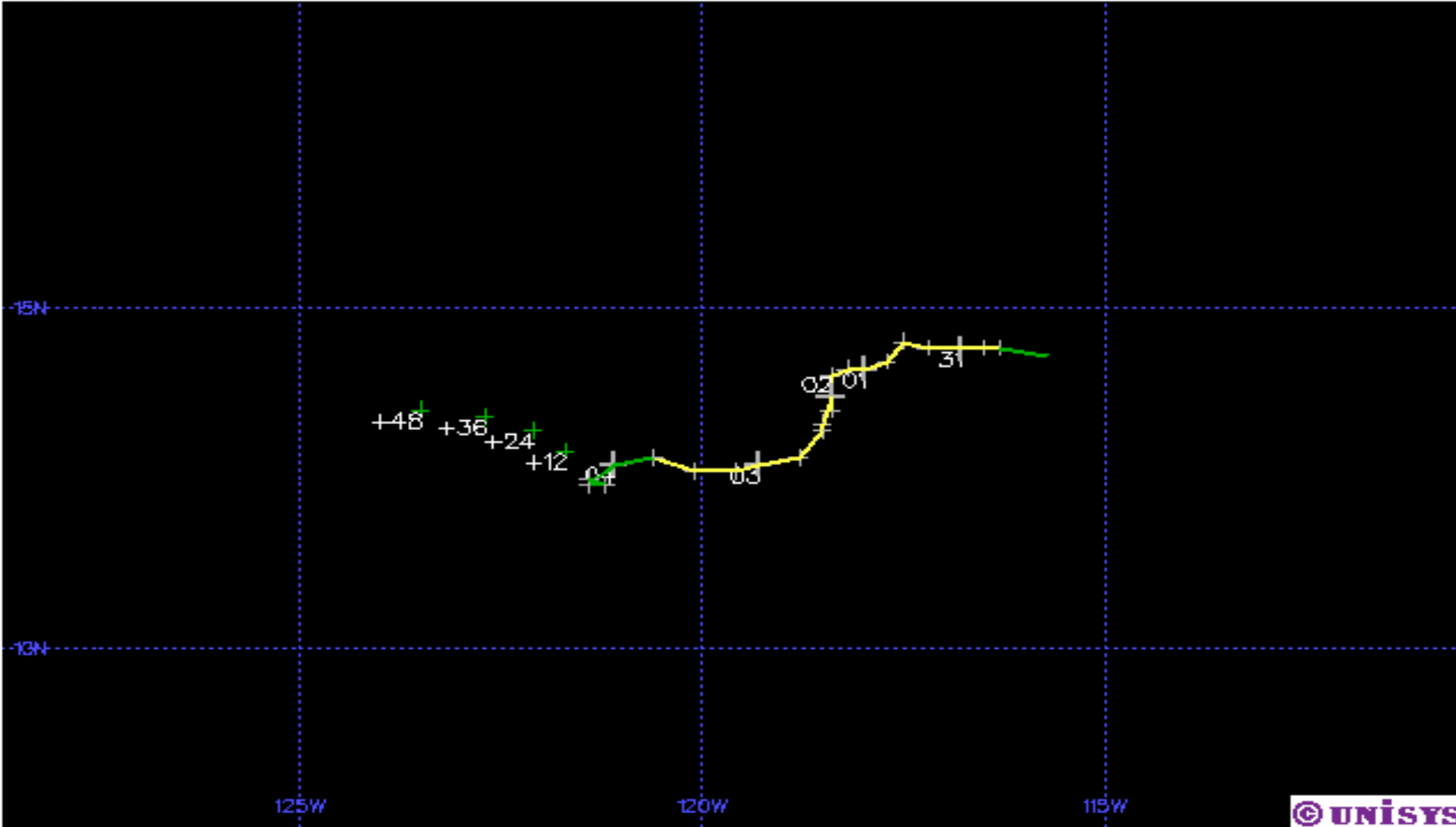
22-29 OCT 2012



# Tropical Cyclone Review

Tropical Storm RDSA

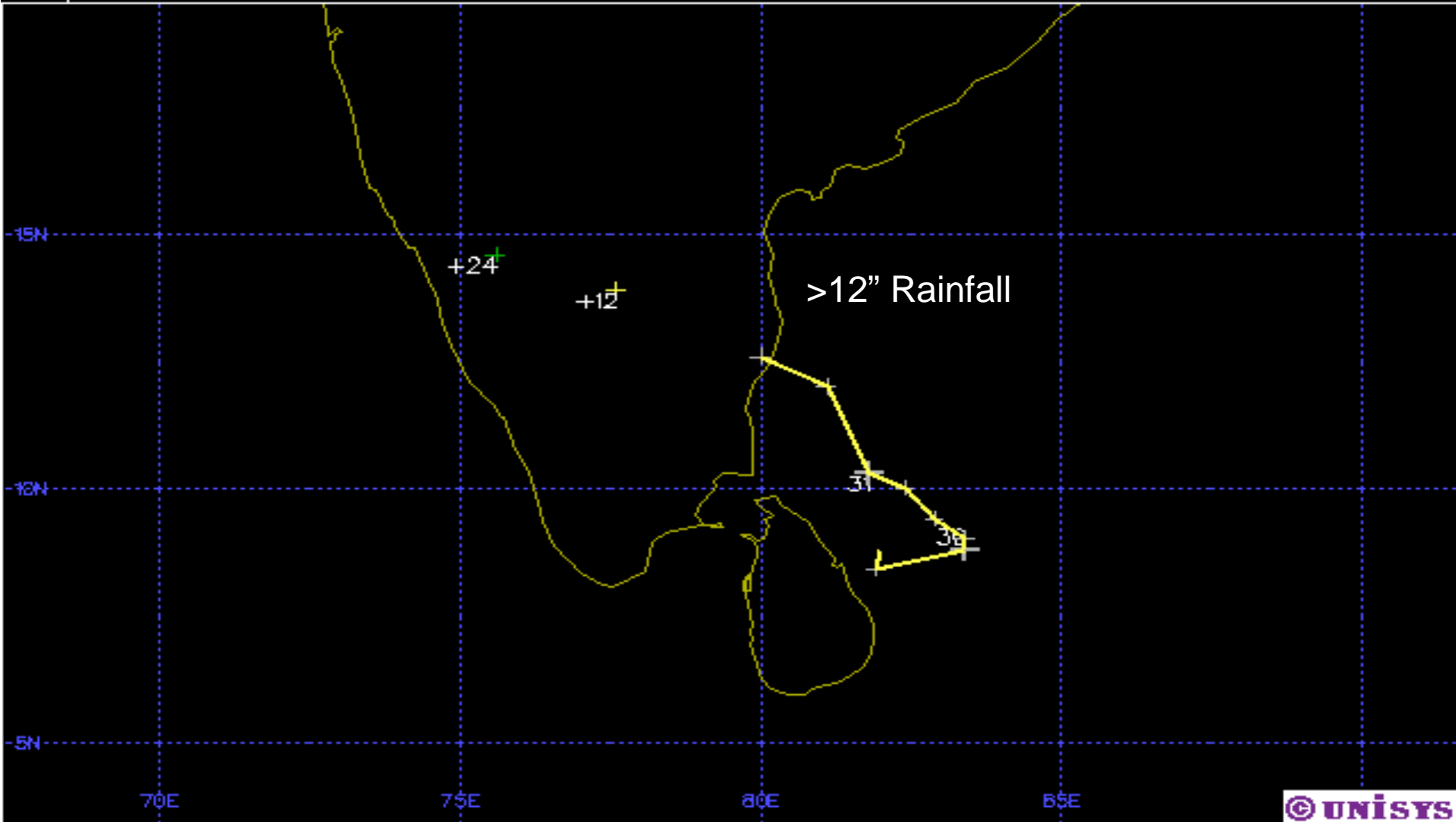
30 OCT-04 NOV 2012



# Tropical Cyclone Review

Tropical Storm NILAM

29–31 OCT 2012

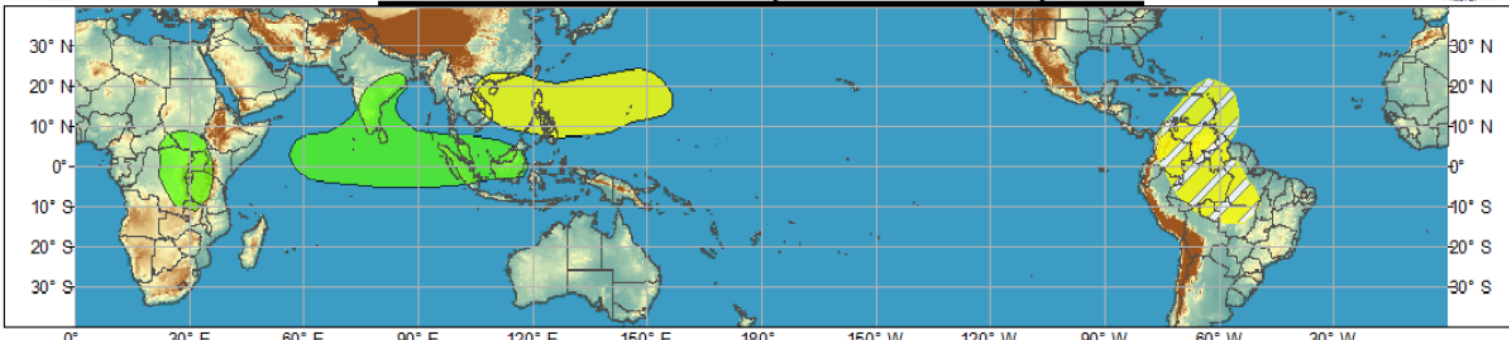




# Global Tropical Hazards/Benefits Outlook - Climate Prediction Center



**Week 1 - Valid: Oct 31, 2012 - Nov 06, 2012**

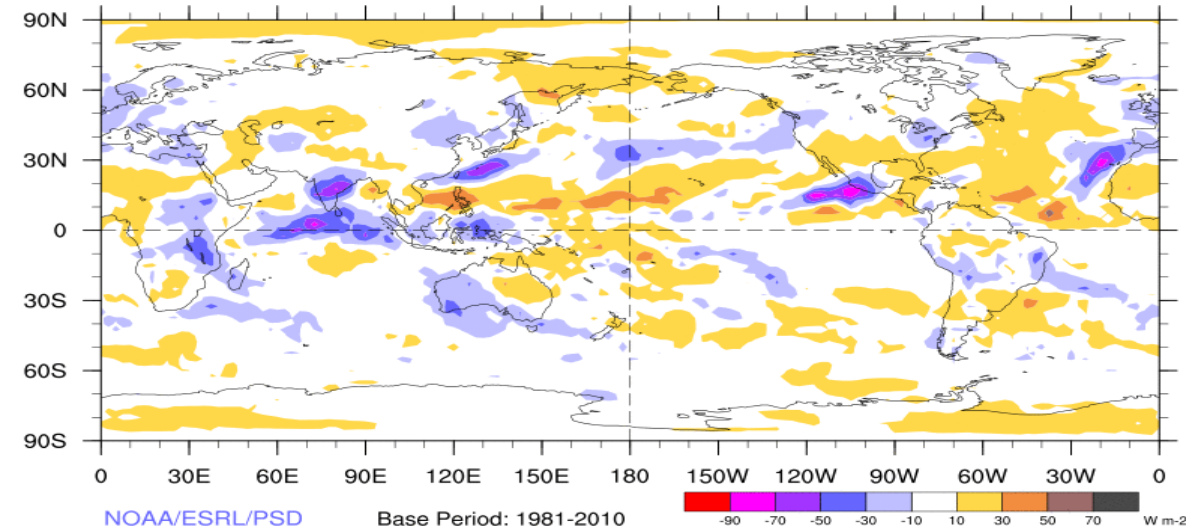


**Week 2 - Valid: Oct 31, 2012 - Nov 06, 2012**



7-Day Average OLR Anomaly

2012/10/29 - 2012/11/04

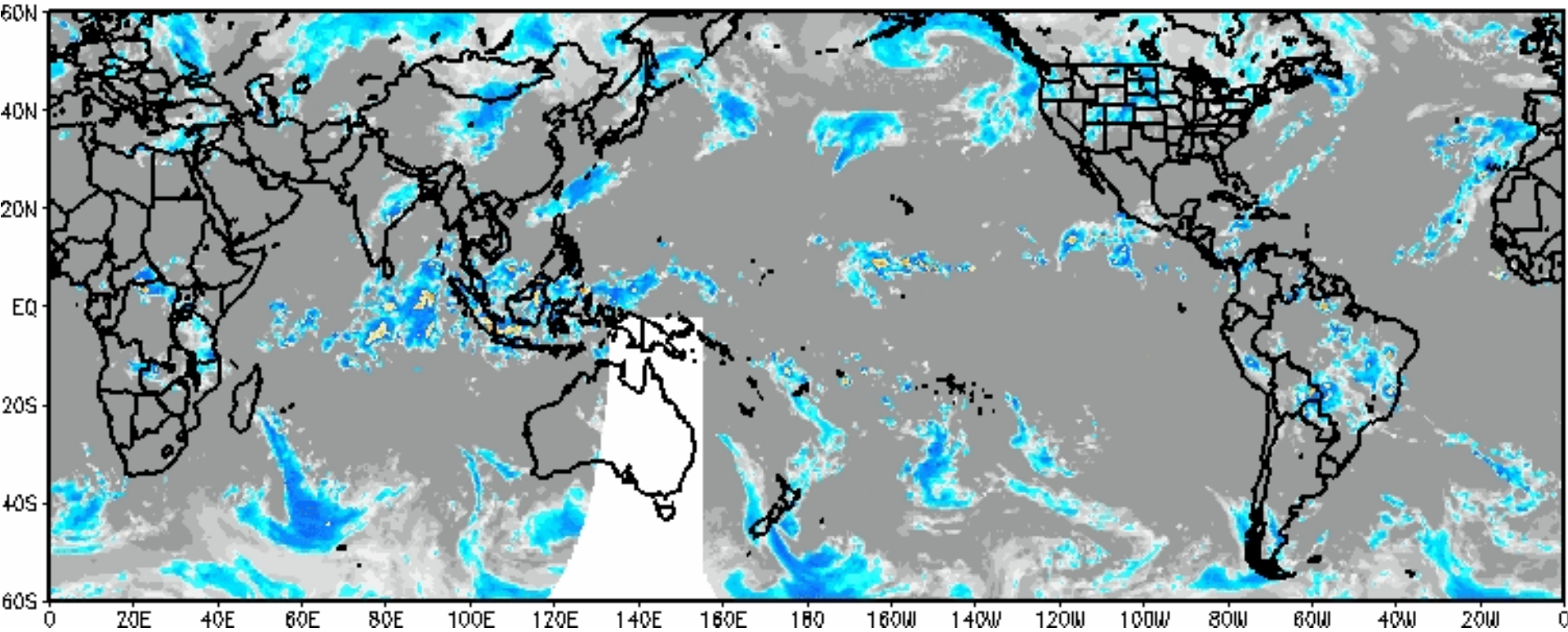


## Outlook Review



# Weekly Satellite Review

IR Temperatures  
0900 UTC 02 NOV 2012



# Synopsis of Climate Modes

## ENSO:

- Borderline ENSO-neutral / weak El Niño conditions are expected to continue into Northern Hemisphere winter 2012-13, possibly strengthening during the next few months.

## MJO and other subseasonal variability:

- The MJO remained active (centered across the eastern Indian Ocean).
- There is considerable spread among the dynamical model MJO index forecasts. Some indicate a continued eastward propagating signal.
- The MJO index forecasts are likely struggling with the representation of other subseasonal tropical variability and we favor a continuation of MJO activity.

## Extratropics:

- AO index became positive recently and is forecast to remain positive.

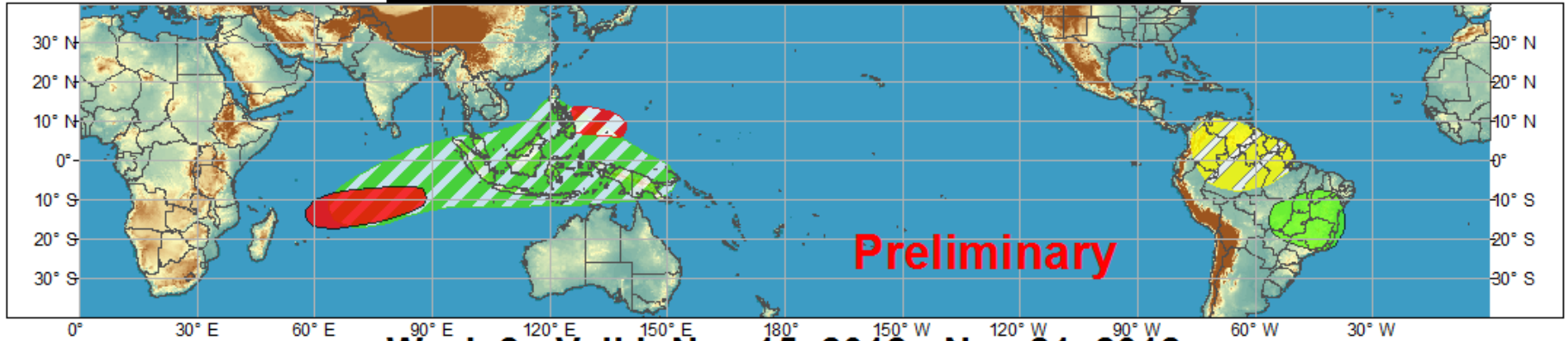




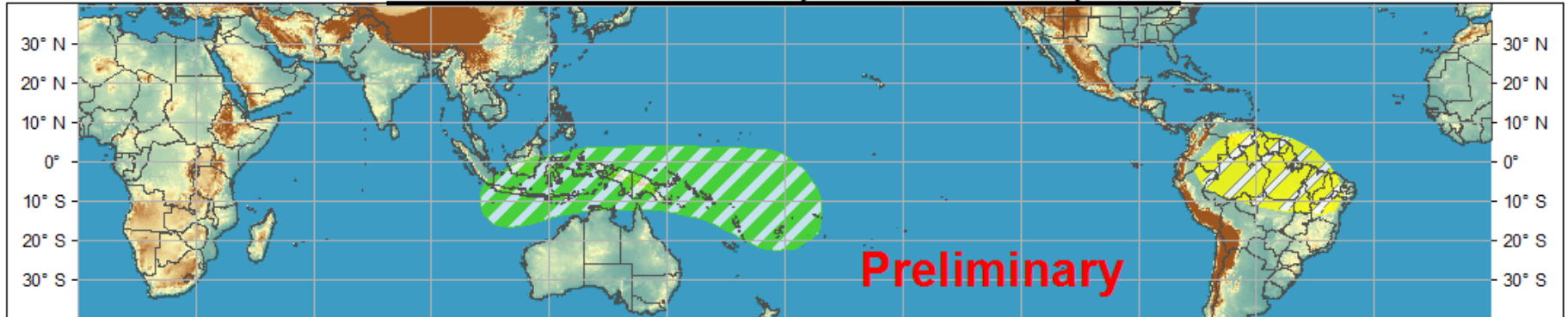
# Global Tropical Hazards/Benefits Outlook - Climate Prediction Center











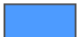

## Week 1 - Valid: Nov 08, 2012 - Nov 14, 2012



## Week 2 - Valid: Nov 15, 2012 - Nov 21, 2012



**Confidence**  
High Moderate

- |                                   |   |  |
|-----------------------------------|---|--|
| <b>Tropical Cyclone Formation</b> |   | Development of a tropical cyclone that eventually reaches tropical storm/cyclone strength. |
| <b>Above-average rainfall</b>     |   | Weekly total rainfall in the upper third of the historical range.                          |
| <b>Below-average rainfall</b>     |   | Weekly total rainfall in the lower third of the historical range.                          |
| <b>Above-normal temperatures</b>  |   | 7-day mean temperatures in the upper third of the historical range.                        |
| <b>Below-normal temperatures</b>  |   | 7-day mean temperatures in the lower third of the historical range.                        |

Produced: 11/06/2012

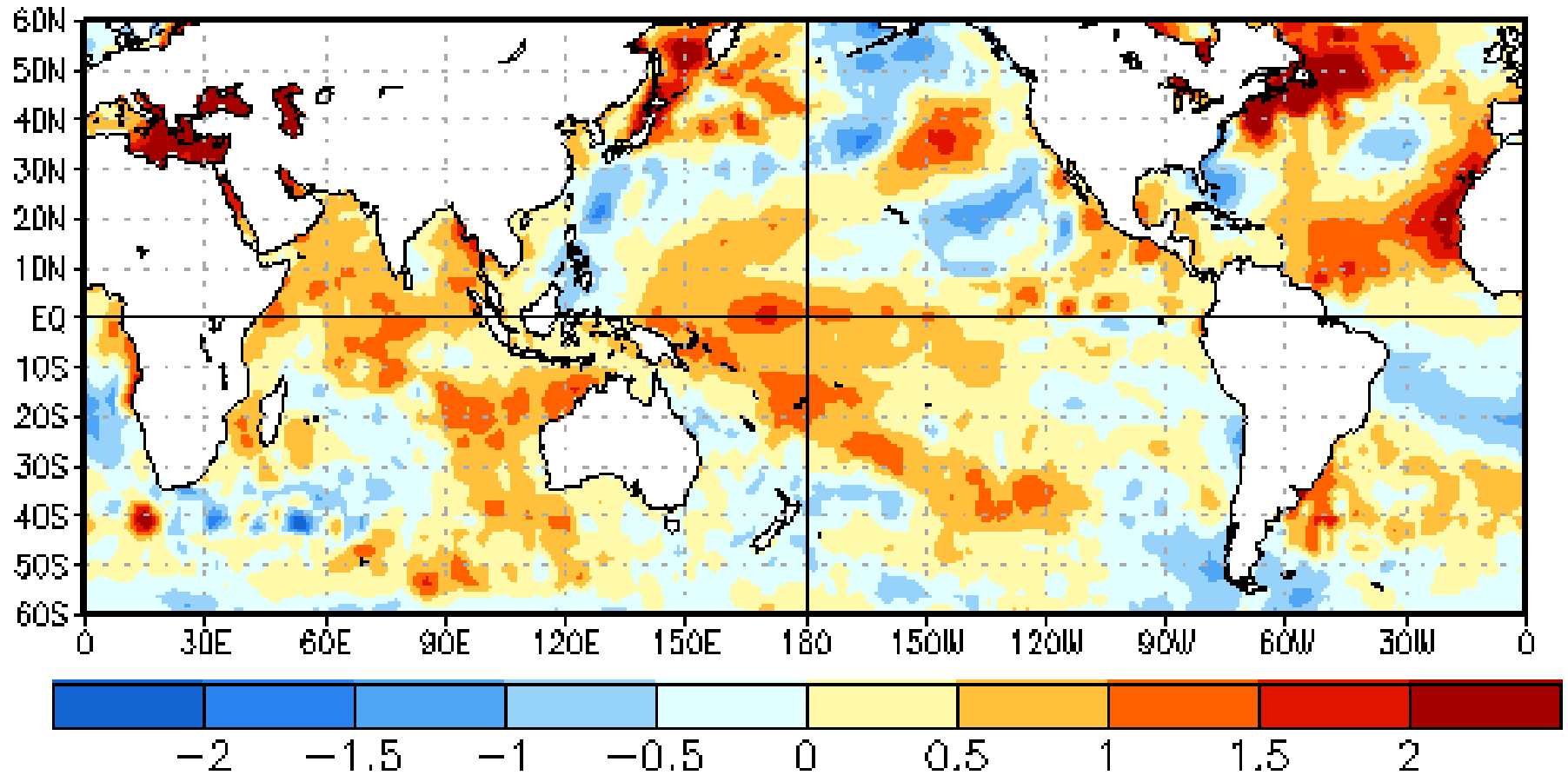
Forecaster: Pugh

Product is updated once per week. The product targets broad scale conditions integrated over a 7-day period for US interests only. Consult your local responsible forecast agency.



# SST Observations

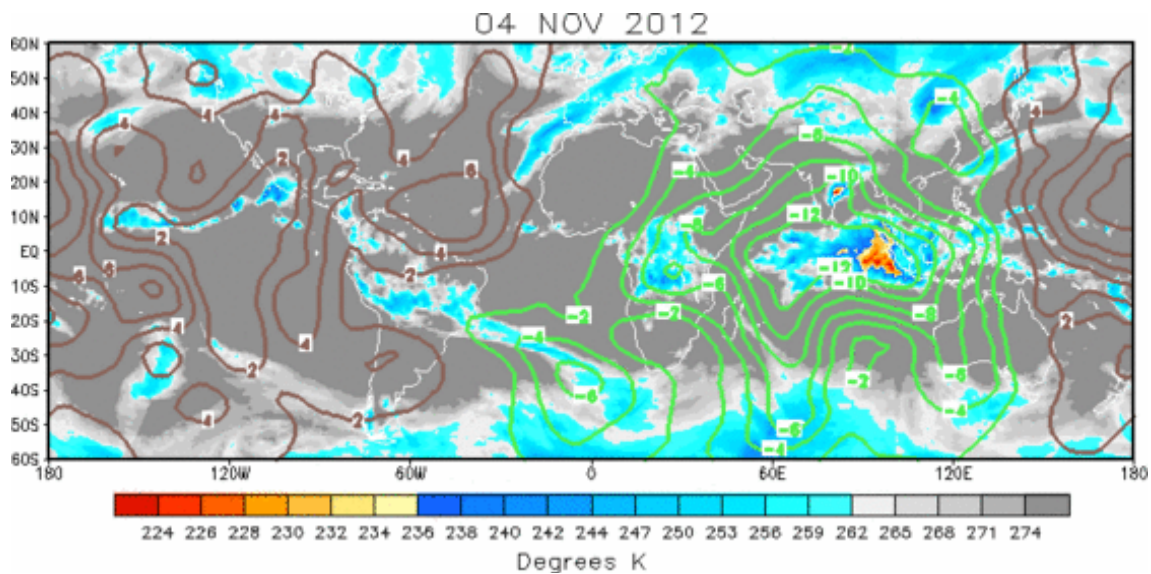
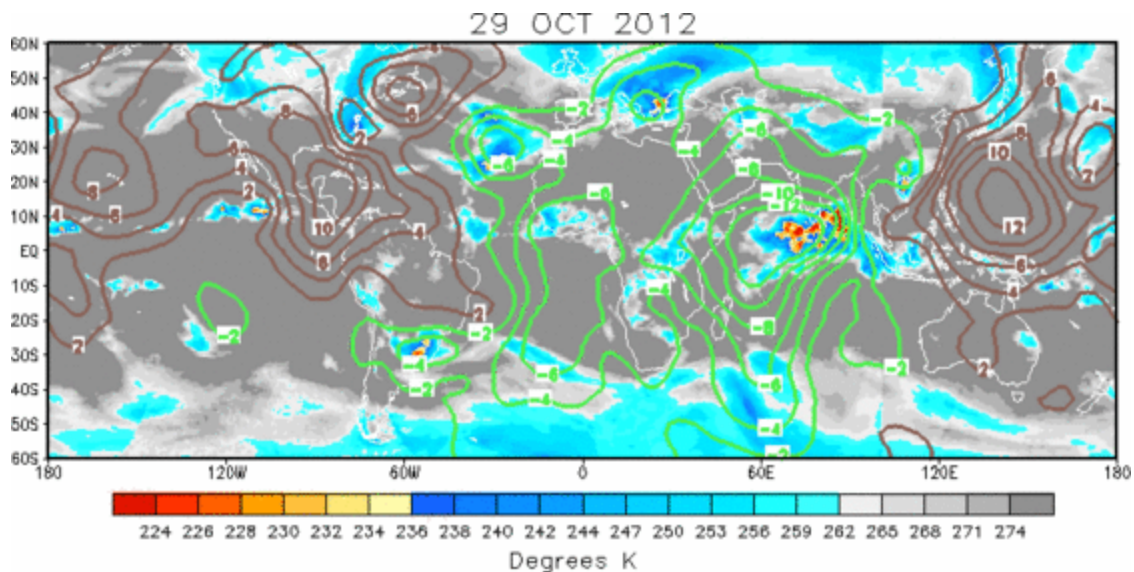
31 OCT 2012



# IR Satellite & 200-hpa Velocity Potential Anomalies

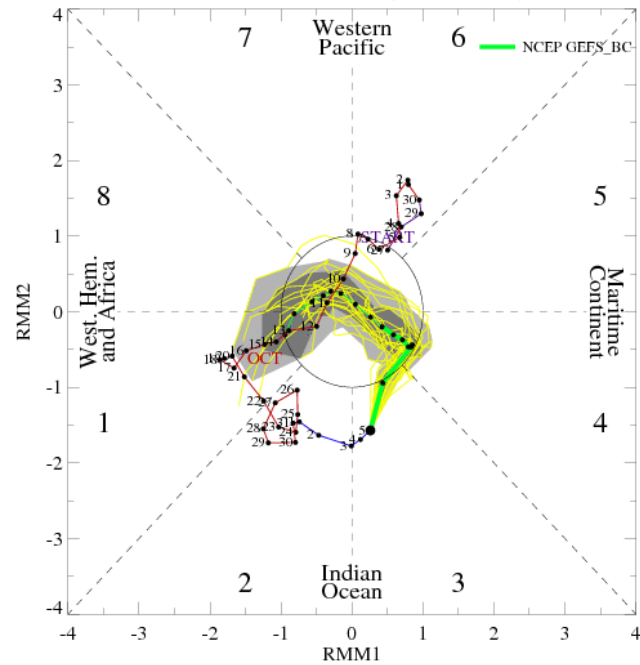
Green: Enhanced Divergence

Brown: Enhanced Convergence

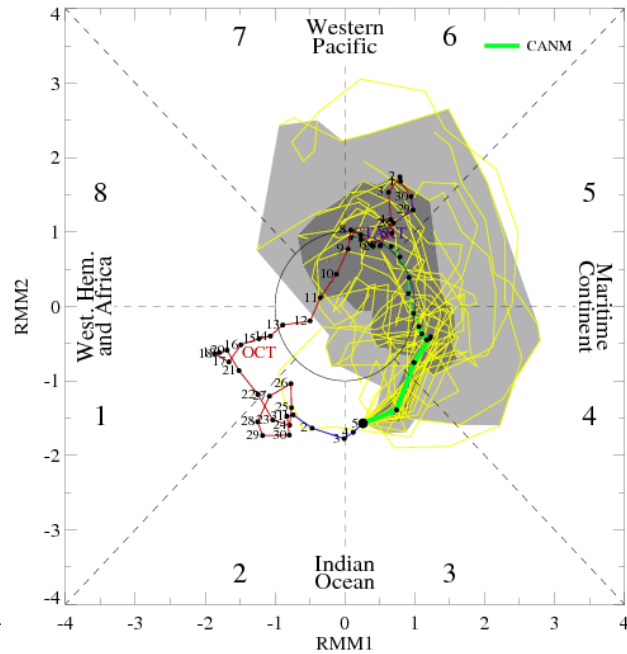


# MJO Observation/Forecast

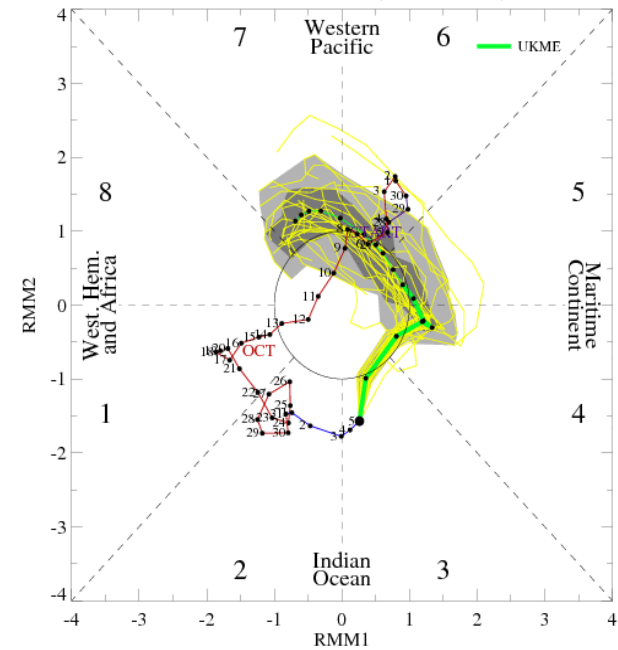
MJO Index Forecast for 06Nov2012-20Nov2012



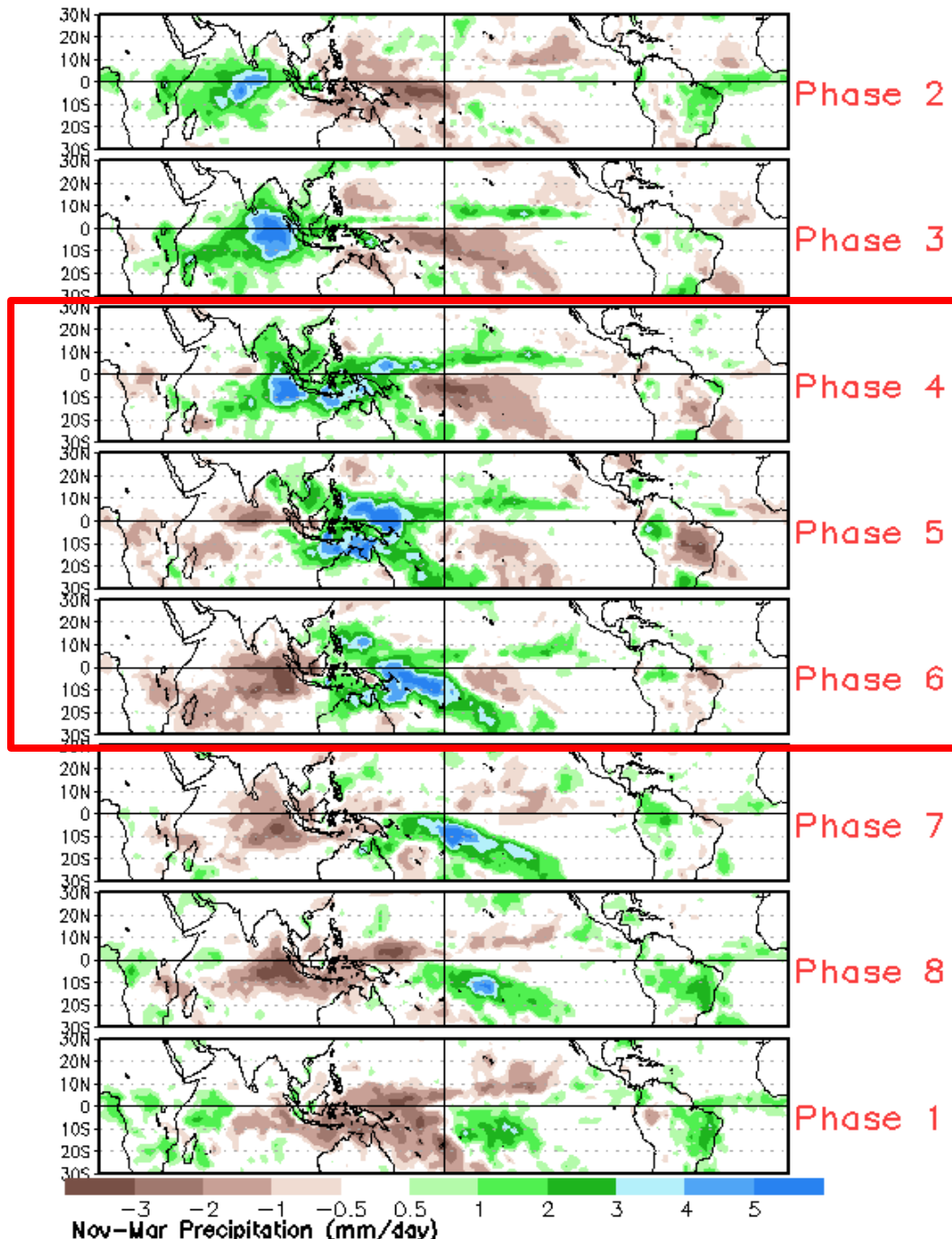
MJO Index Forecast for 06Nov2012-20Nov2012



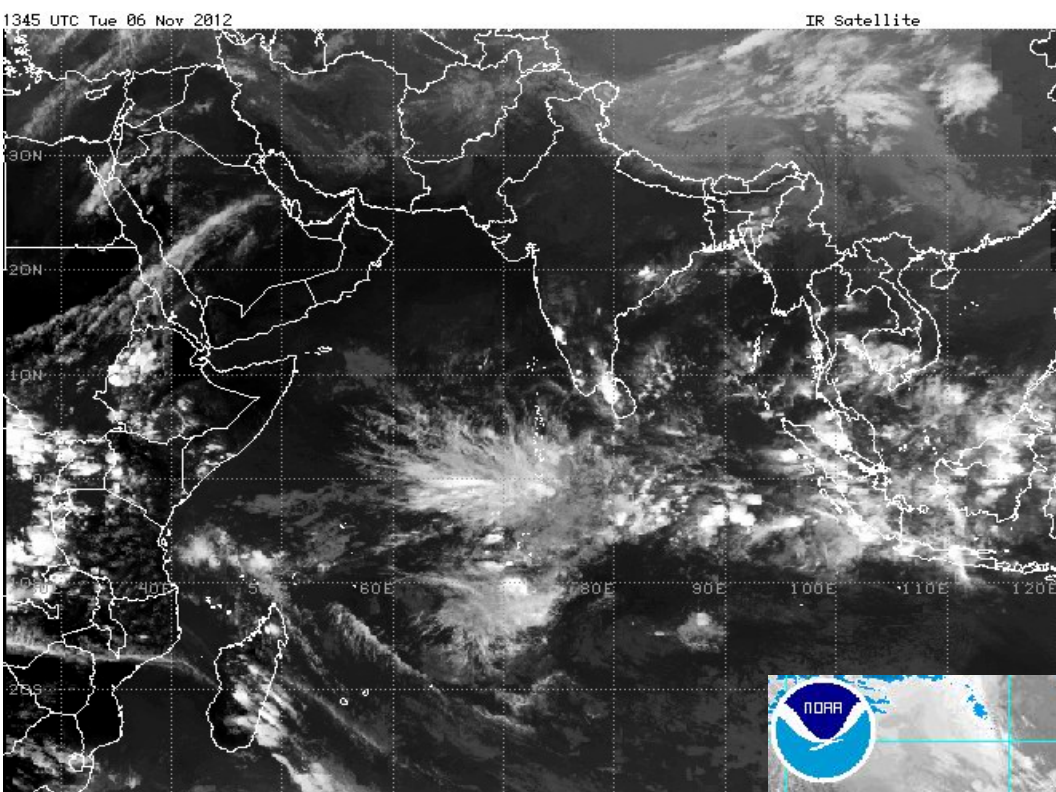
MJO Index Forecast for 06Nov2012-20Nov2012



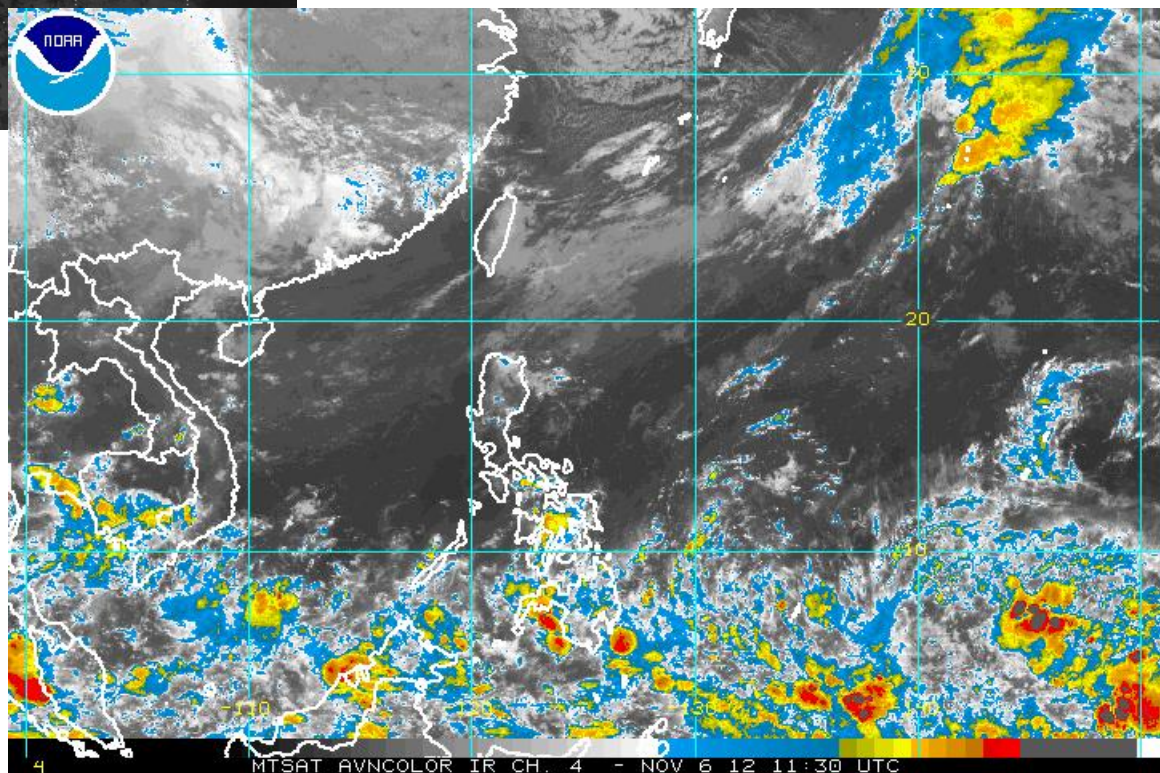
# Average Conditions when the MJO is present (Nov-Mar)



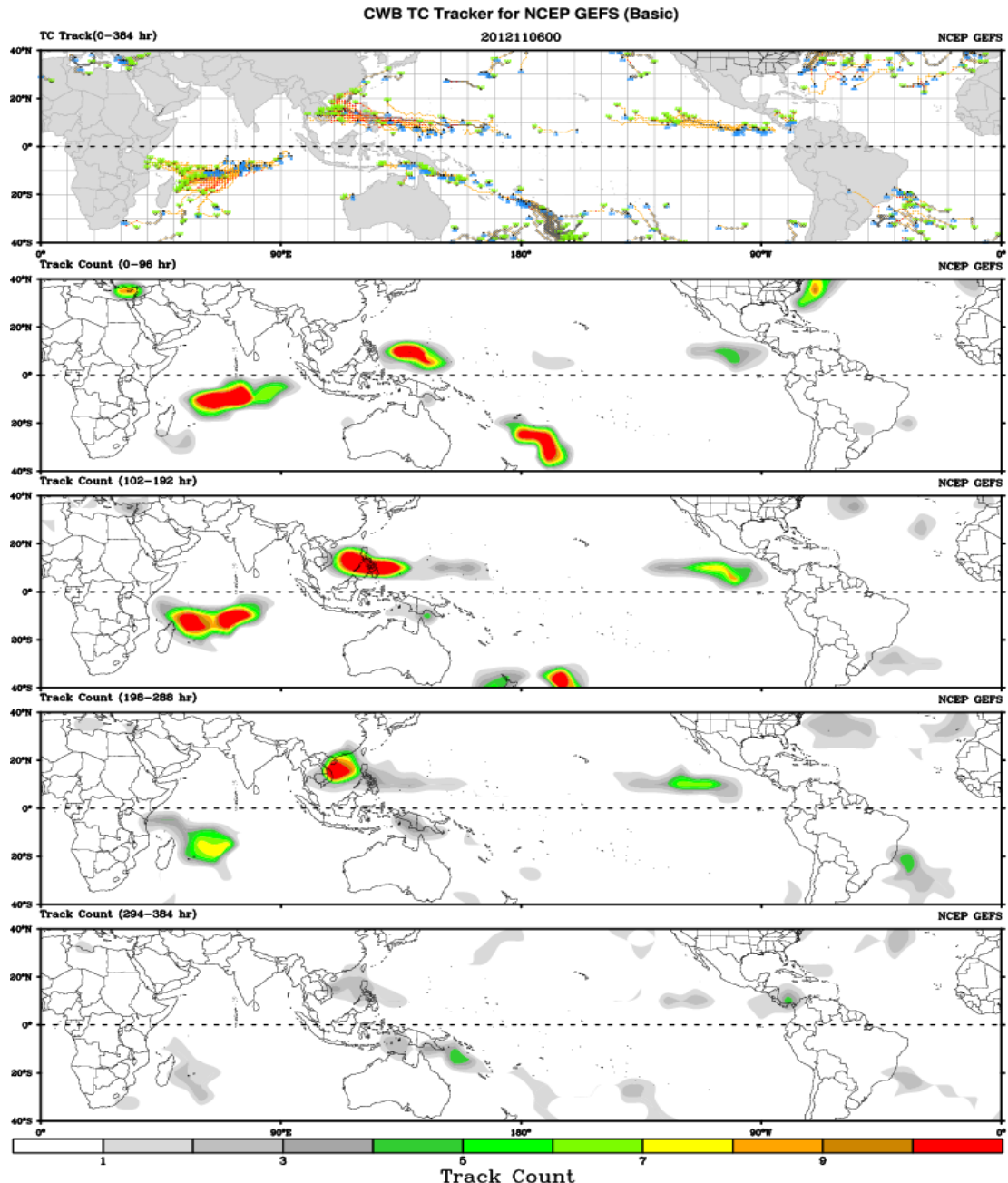




## Initial Conditions & TC Development

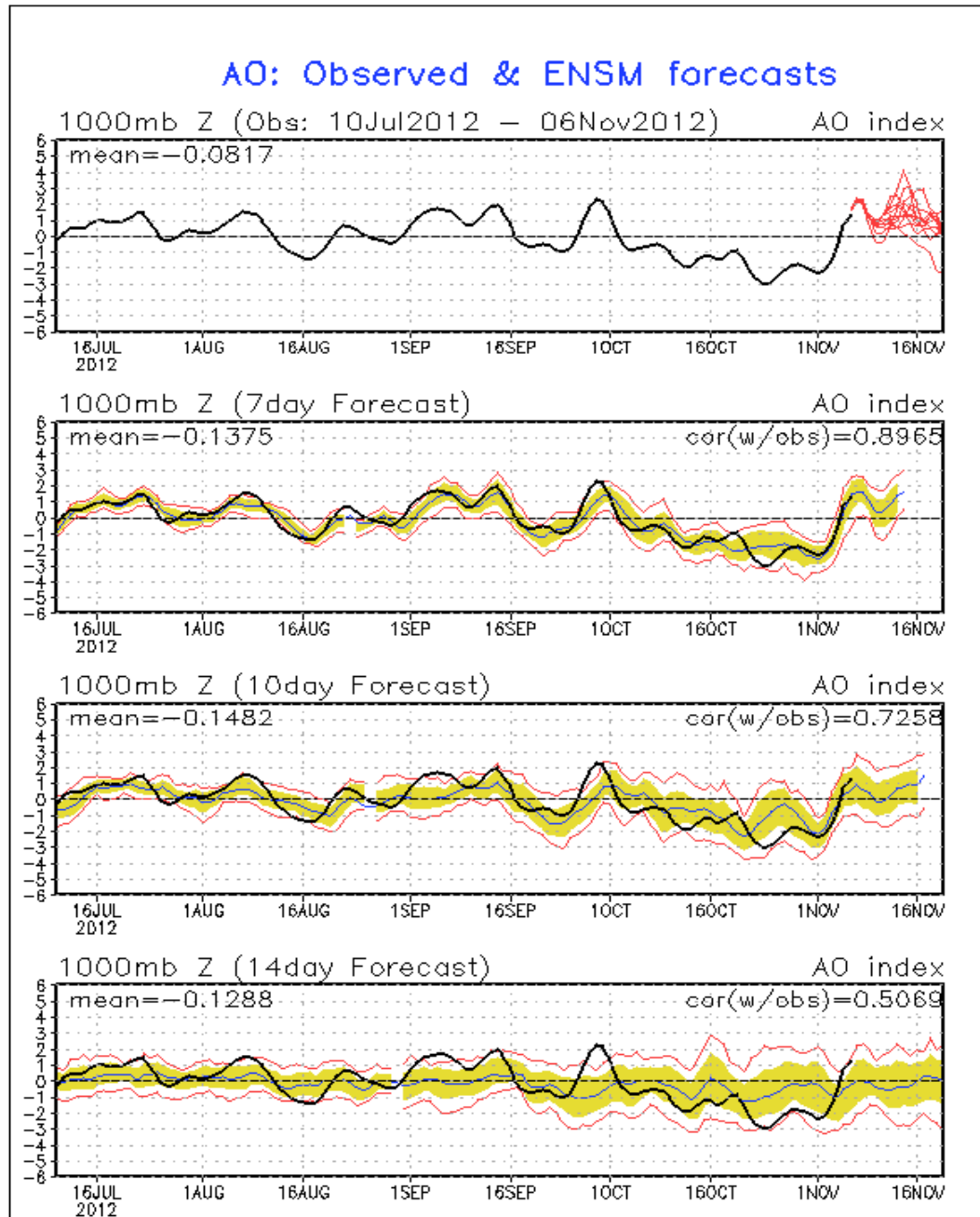


# Ensemble GFS TC Guidance

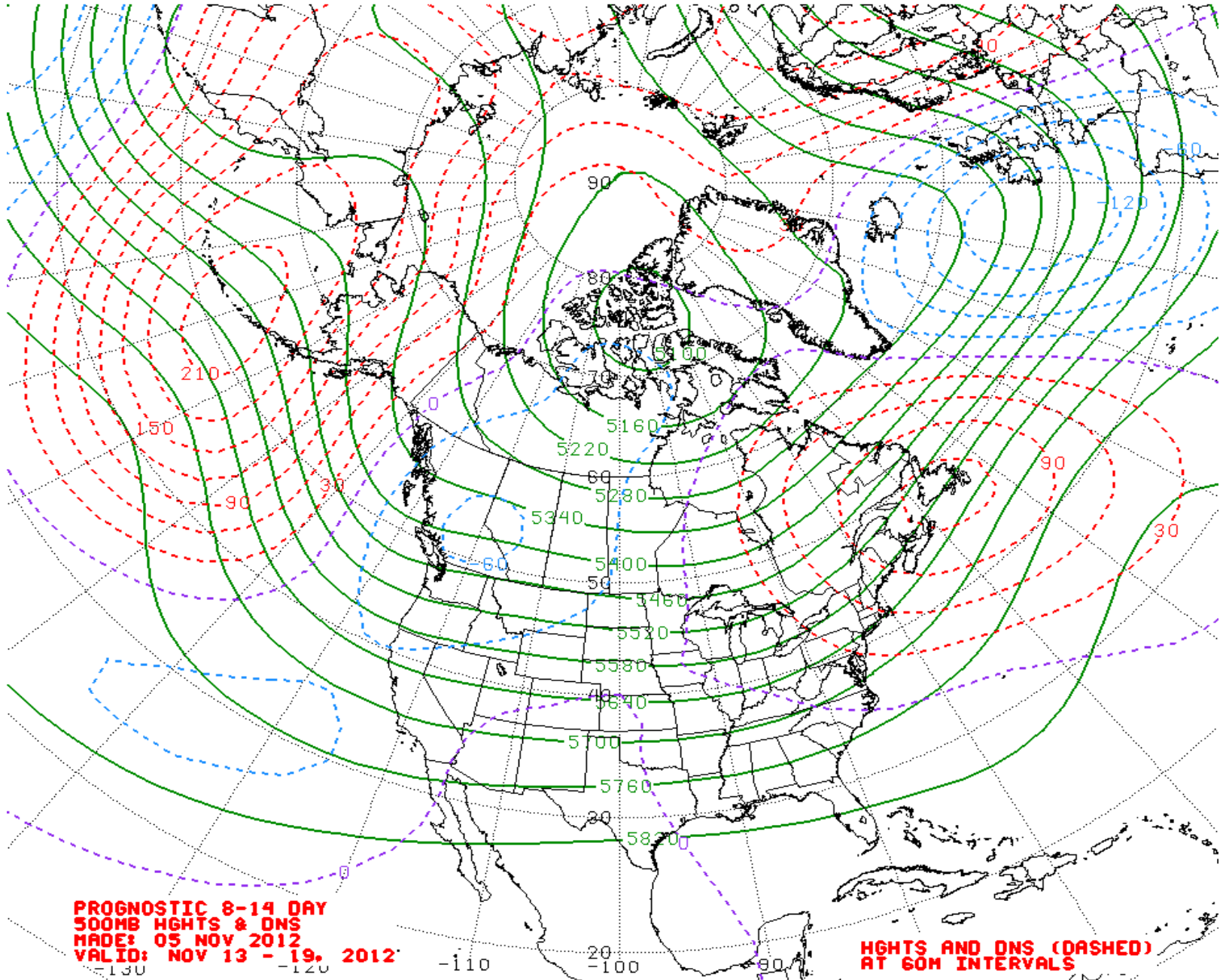




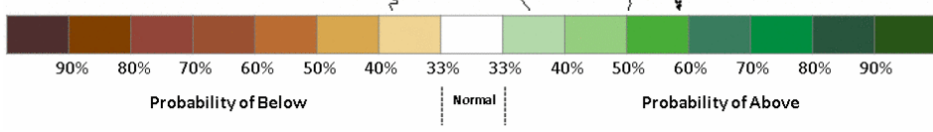
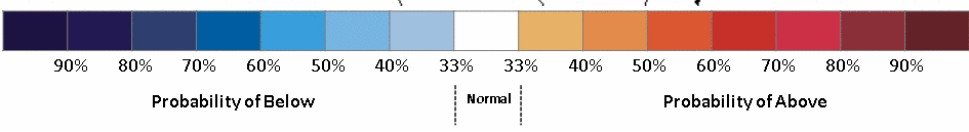
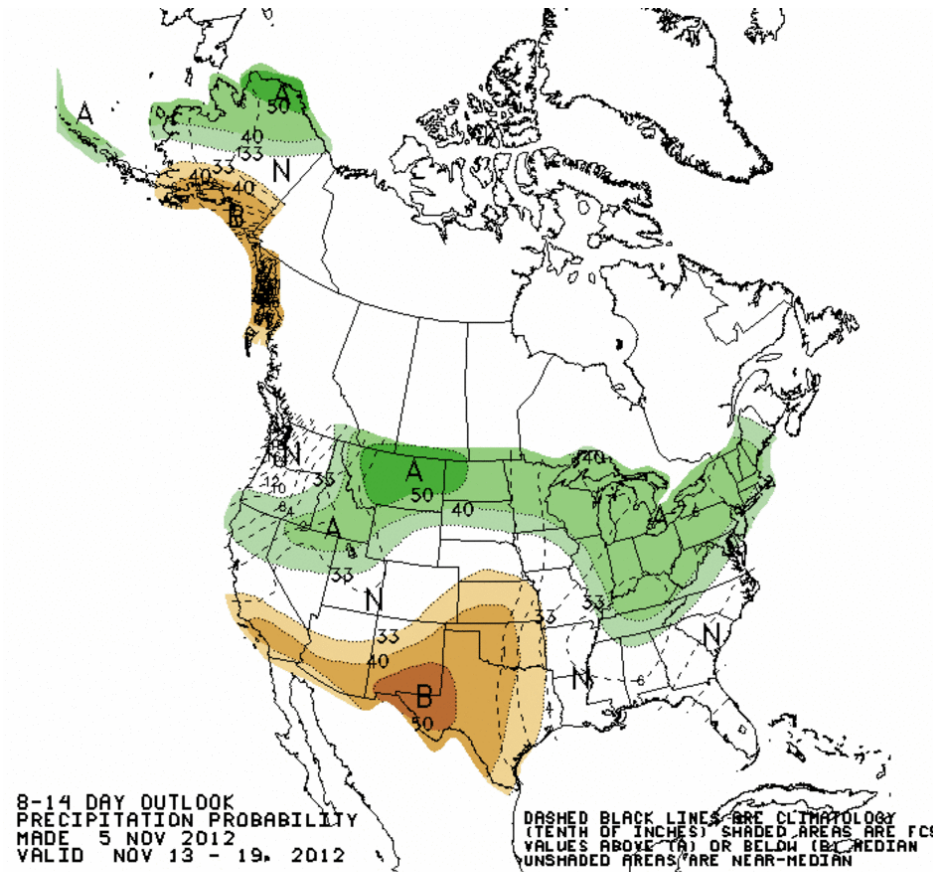
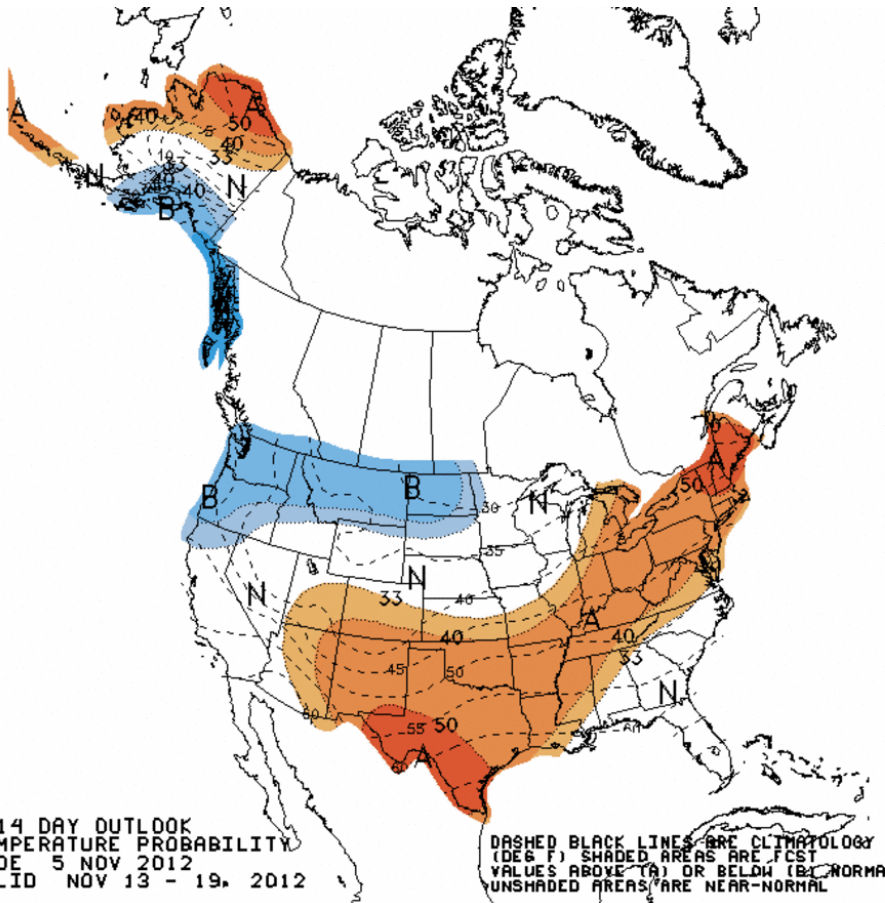
# Recent AO Observations and GEFS Forecast



# Week 2 500-hPa Manual Chart



# Week 2 -- Temperature and Precipitation



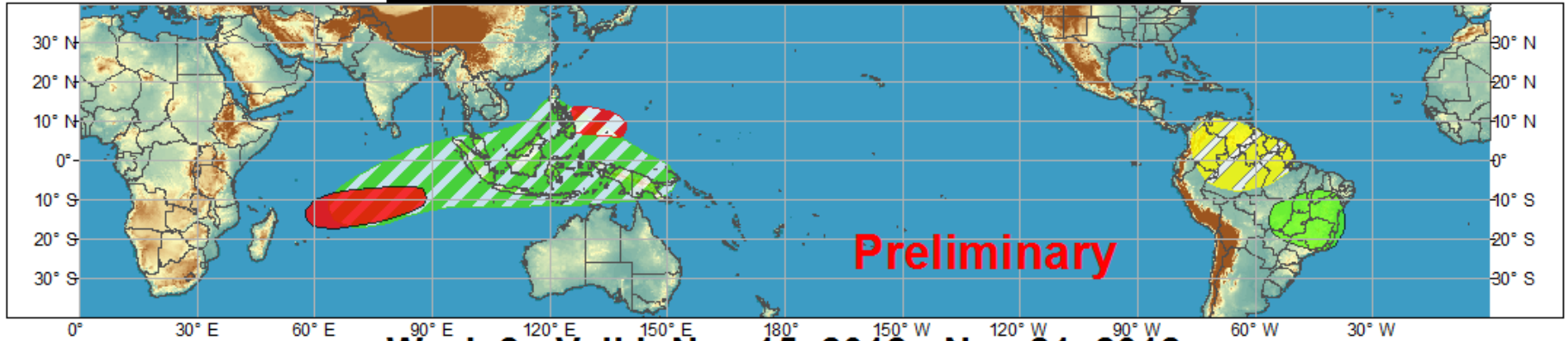




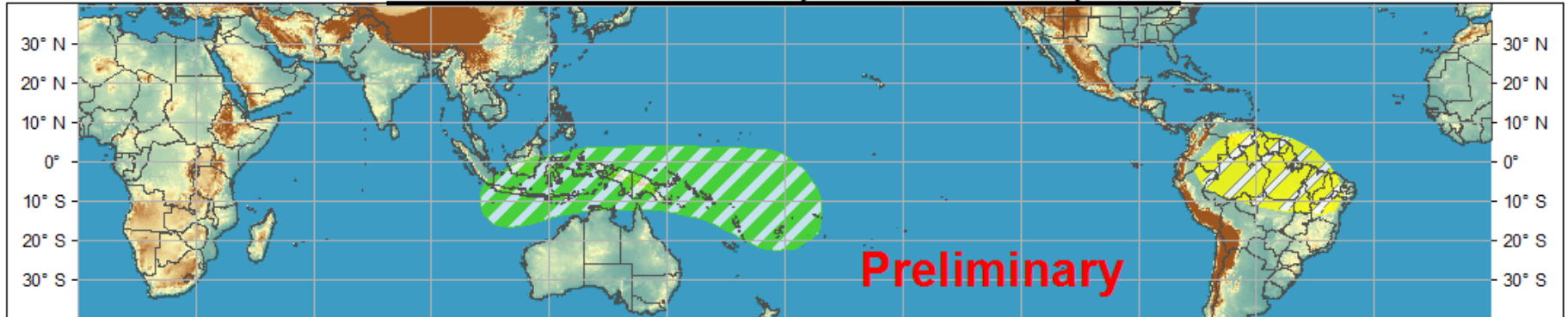
# Global Tropical Hazards/Benefits Outlook - Climate Prediction Center











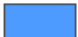

## Week 1 - Valid: Nov 08, 2012 - Nov 14, 2012



## Week 2 - Valid: Nov 15, 2012 - Nov 21, 2012



**Confidence**  
High Moderate

- |                                   |   |  |
|-----------------------------------|---|--|
| <b>Tropical Cyclone Formation</b> |   | Development of a tropical cyclone that eventually reaches tropical storm/cyclone strength. |
| <b>Above-average rainfall</b>     |   | Weekly total rainfall in the upper third of the historical range.                          |
| <b>Below-average rainfall</b>     |   | Weekly total rainfall in the lower third of the historical range.                          |
| <b>Above-normal temperatures</b>  |   | 7-day mean temperatures in the upper third of the historical range.                        |
| <b>Below-normal temperatures</b>  |   | 7-day mean temperatures in the lower third of the historical range.                        |

Produced: 11/06/2012

Forecaster: Pugh

Product is updated once per week. The product targets broad scale conditions integrated over a 7-day period for US interests only. Consult your local responsible forecast agency.

