

Global Tropics Hazards And Benefits Outlook

November 20, 2012

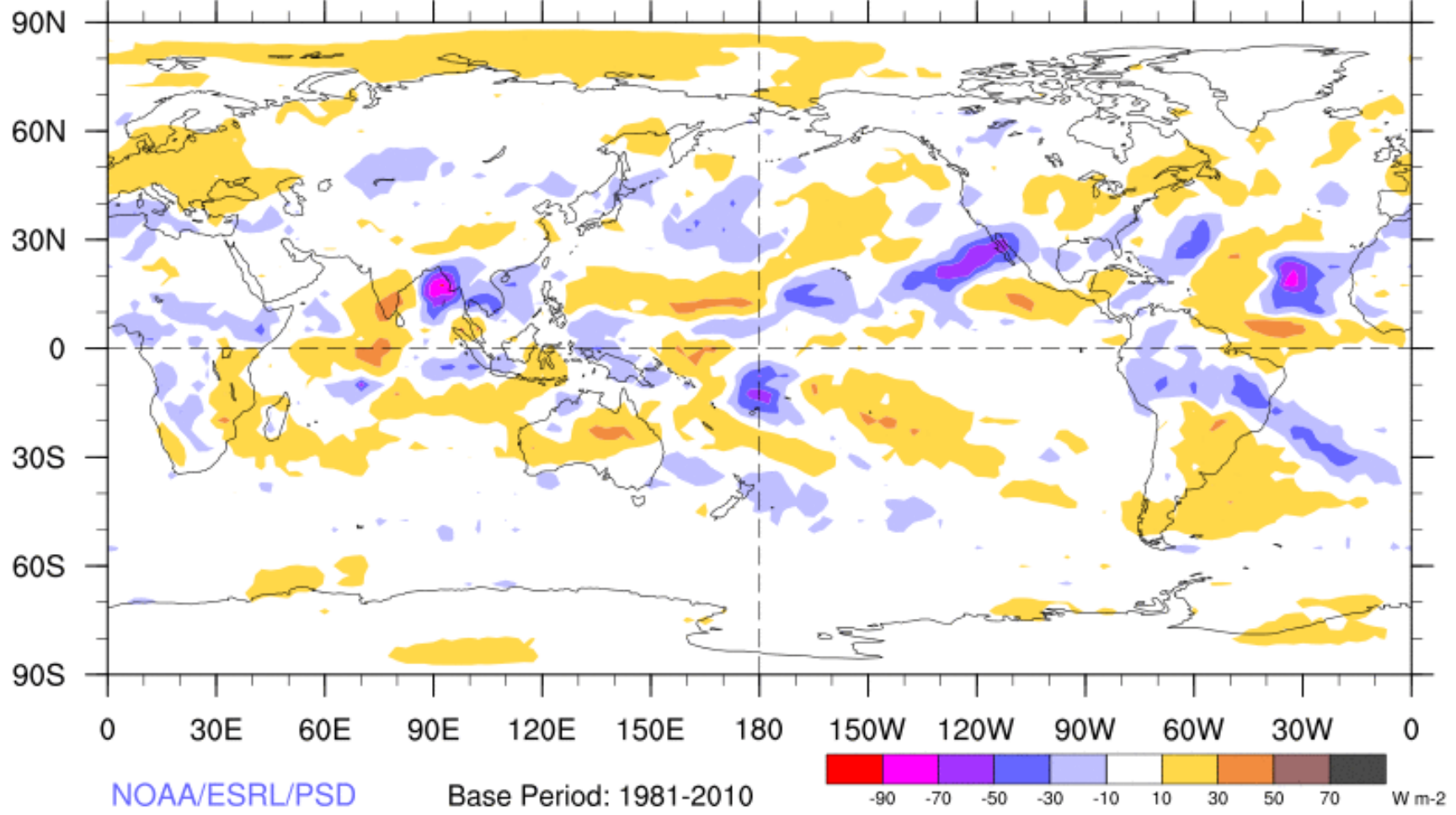
Jon Gottschalck

Outline

1. Review of Recent Conditions
2. Synopsis of Climate Modes
3. GTH Outlook and Forecast Discussion

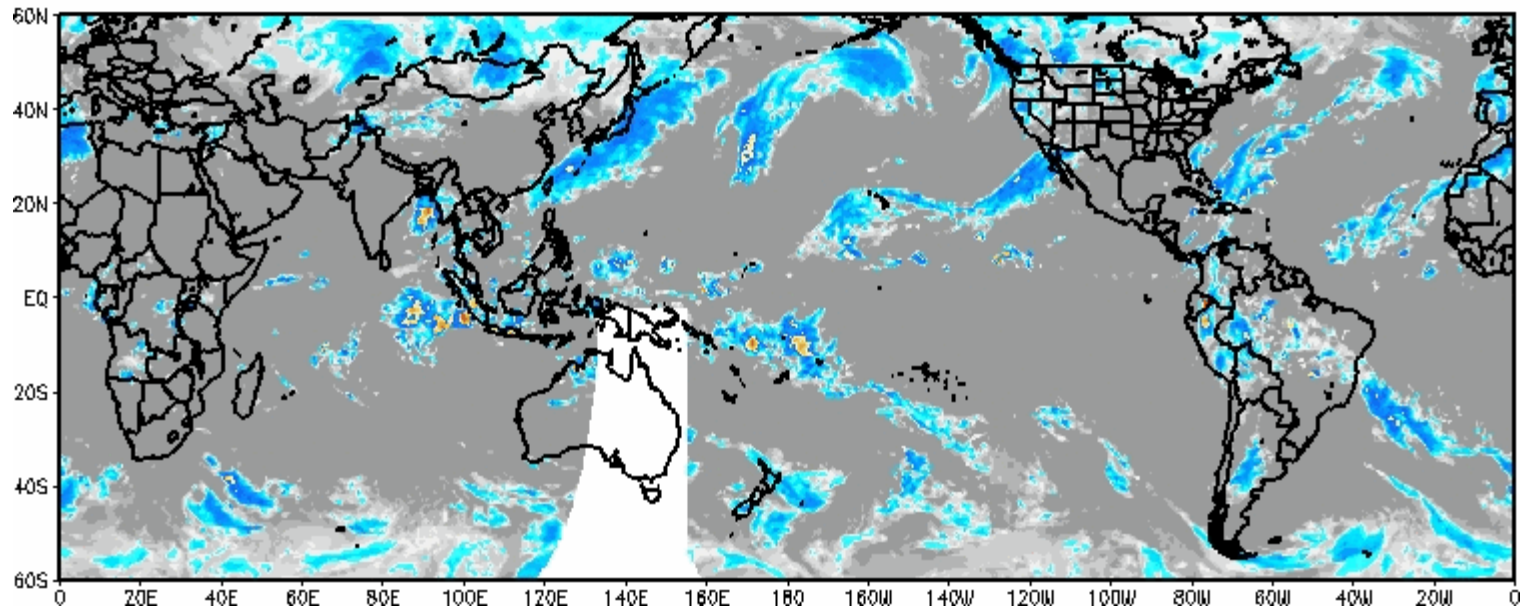
7-Day Average OLR Anomaly

2012/11/12 - 2012/11/18

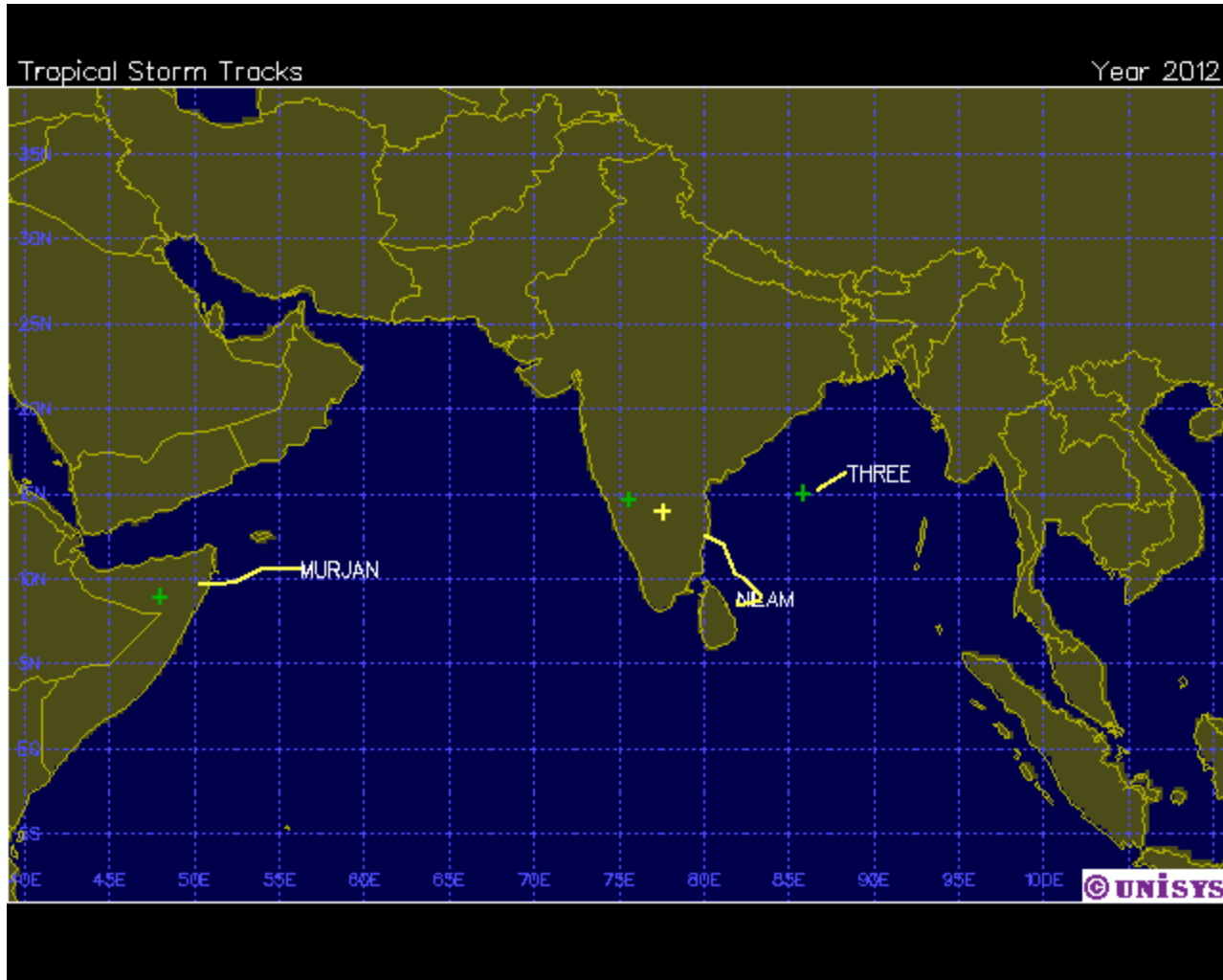


Weekly Satellite Review

IR Temperatures
0900 UTC 17 NOV 2012



Tropical Cyclone Review

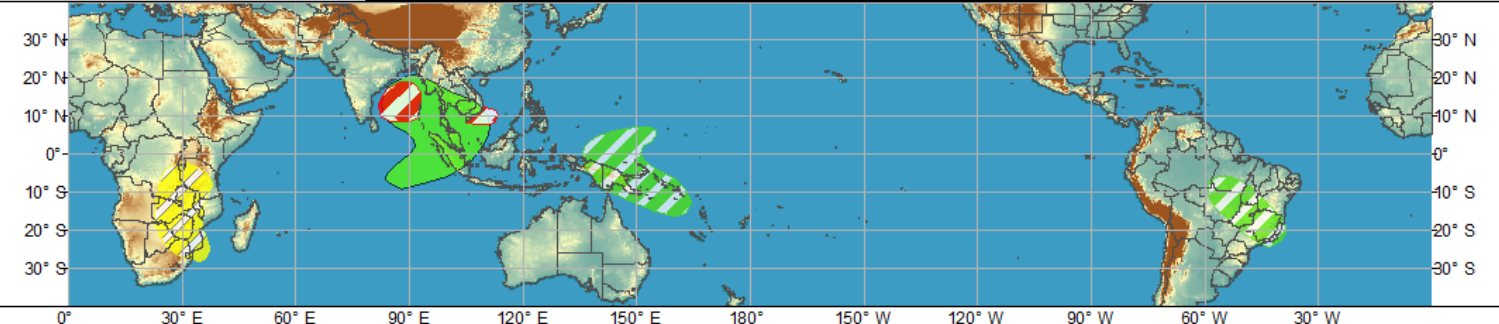




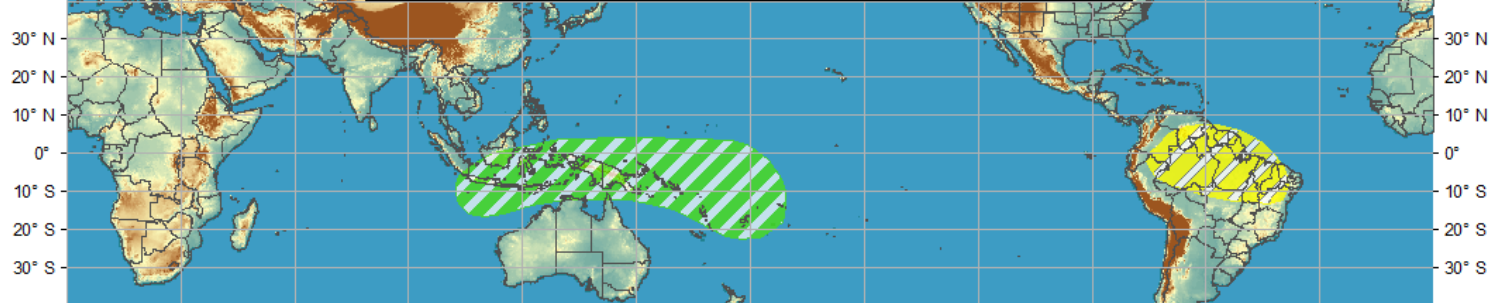
Global Tropical Hazards/Benefits Outlook - Climate Prediction Center



Week 1 - Valid: Nov 14, 2012 - Nov 20, 2012

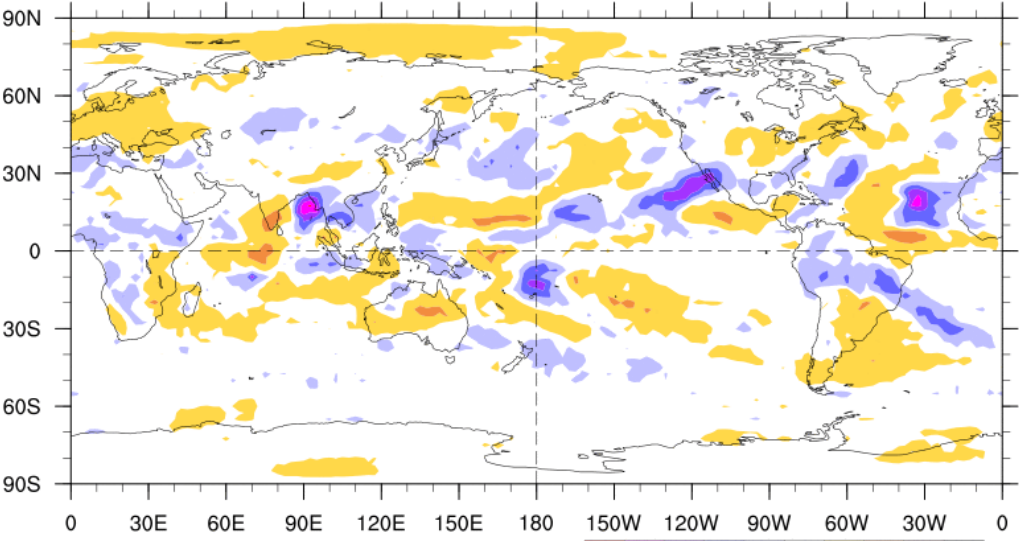


Week 2 - Valid: Nov 14, 2012 - Nov 20, 2012



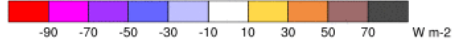
7-Day Average OLR Anomaly

2012/11/12 - 2012/11/18



NOAA/ESRL/PSD

Base Period: 1981-2010



Outlook Review

Synopsis of Climate Modes

ENSO:

- ENSO-neutral conditions continue and ENSO-neutral is favored during the Northern Hemisphere winter 2012-13.

MJO and other subseasonal variability:

- The MJO showed signs of weakening during the past week as several observational indicators became considerably less coherent.
- Most of the dynamical model MJO index forecasts currently indicate little, if any, coherent MJO signal during the next two weeks. Some statistical forecast tools, however, do indicate the potential for renewed enhanced convection in the western Pacific during the period.
- Other modes of subseasonal tropical variability are less active or defined

Extratropics:

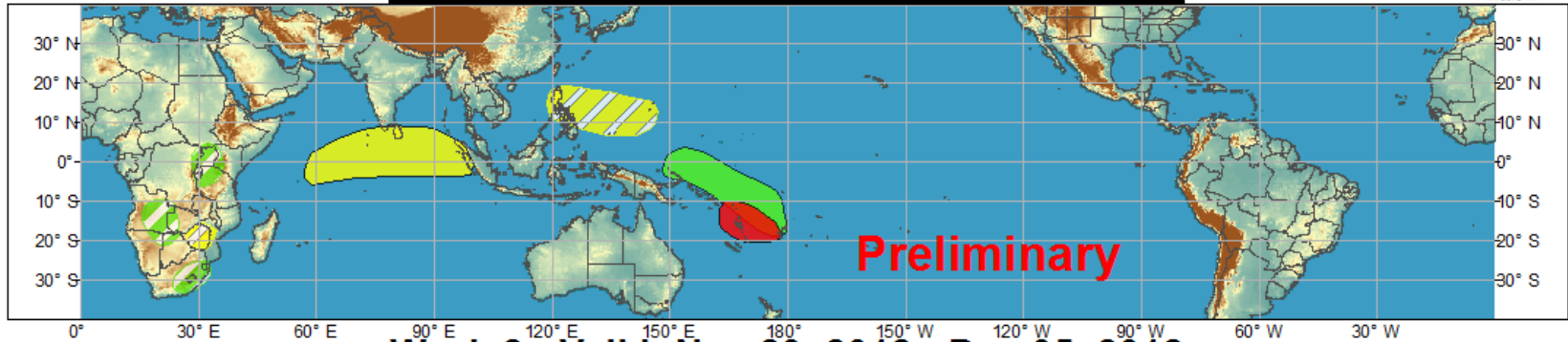
- AO forecast to tend negative after this week. Cold air outbreak forecast for next week.



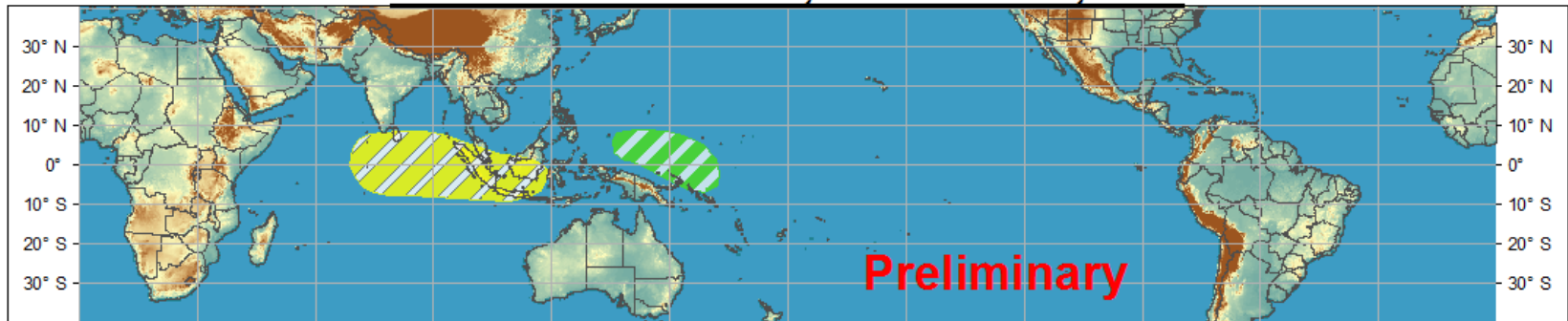
Global Tropical Hazards/Benefits Outlook - Climate Prediction Center



Week 1 - Valid: Nov 22, 2012 - Nov 28, 2012



Week 2 - Valid: Nov 29, 2012 - Dec 05, 2012



Confidence
High Moderate

- Tropical Cyclone Formation** Development of a tropical cyclone that eventually reaches tropical storm/cyclone strength.
- Above-average rainfall** Weekly total rainfall in the upper third of the historical range.
- Below-average rainfall** Weekly total rainfall in the lower third of the historical range.
- Above-normal temperatures** 7-day mean temperatures in the upper third of the historical range.
- Below-normal temperatures** 7-day mean temperatures in the lower third of the historical range.

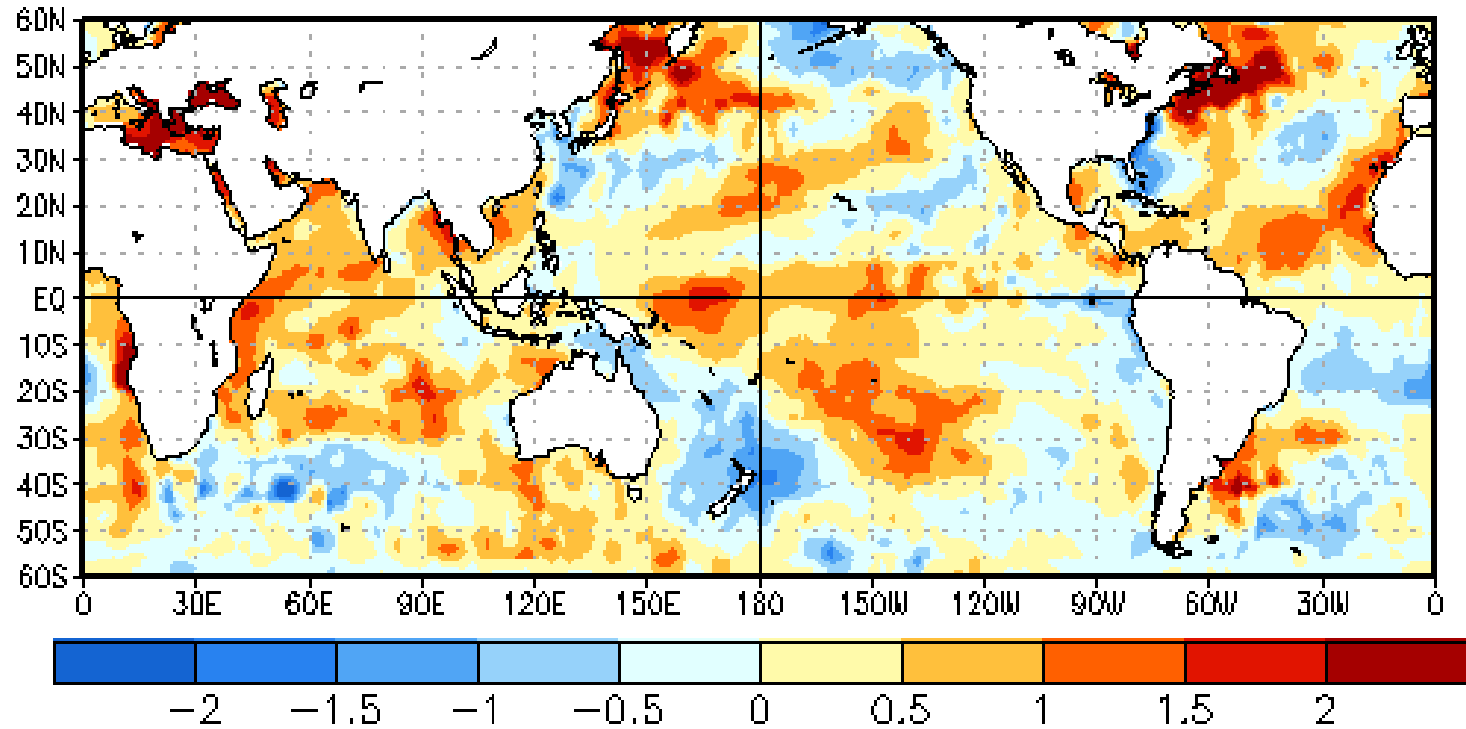
Product is updated once per week. The product targets broad scale conditions integrated over a 7-day period for US interests only. Consult your local responsible forecast agency.



Produced: 11/20/2012
Forecaster: Gottschalck

SST Observations

14 NOV 2012

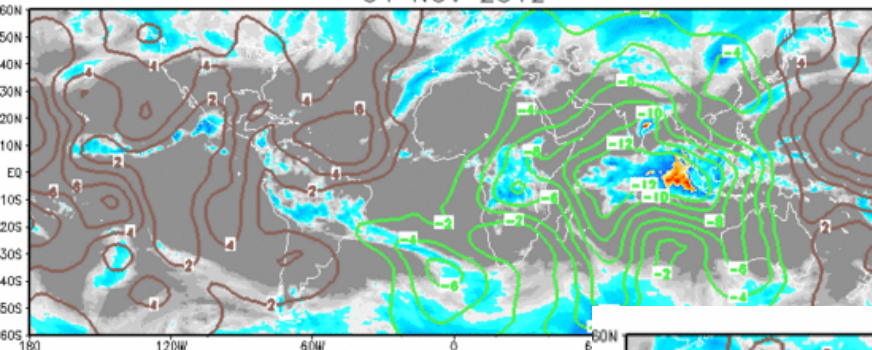


IR Satellite & 200-hpa Velocity Potential Anomalies

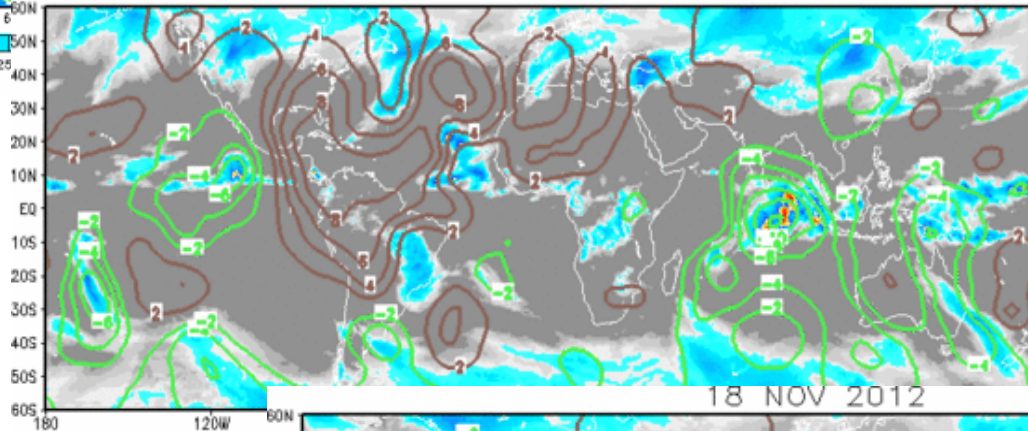
Green: Enhanced Divergence

Brown: Enhanced Convergence

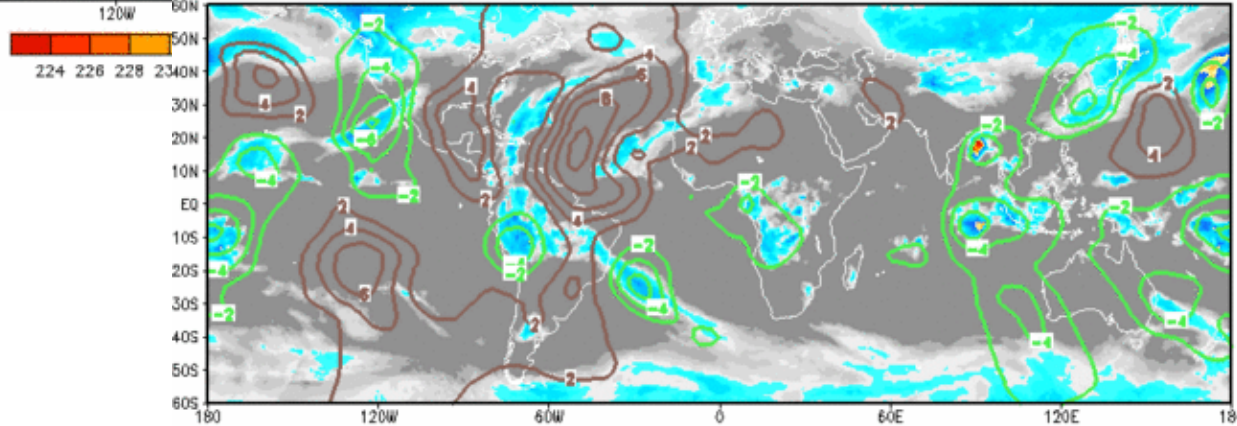
04 NOV 2012



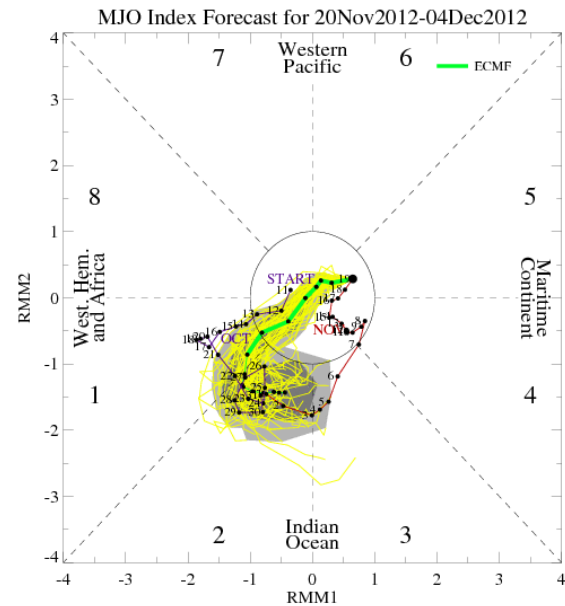
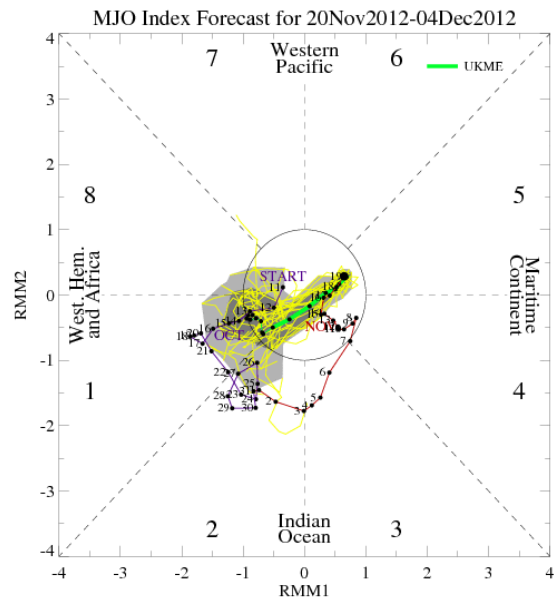
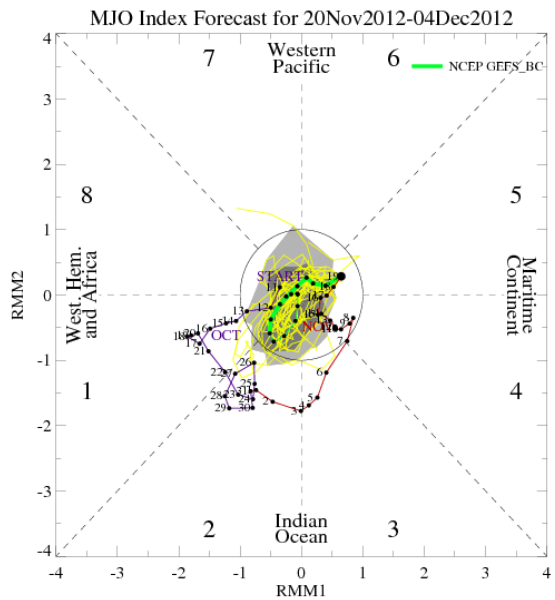
10 NOV 2012



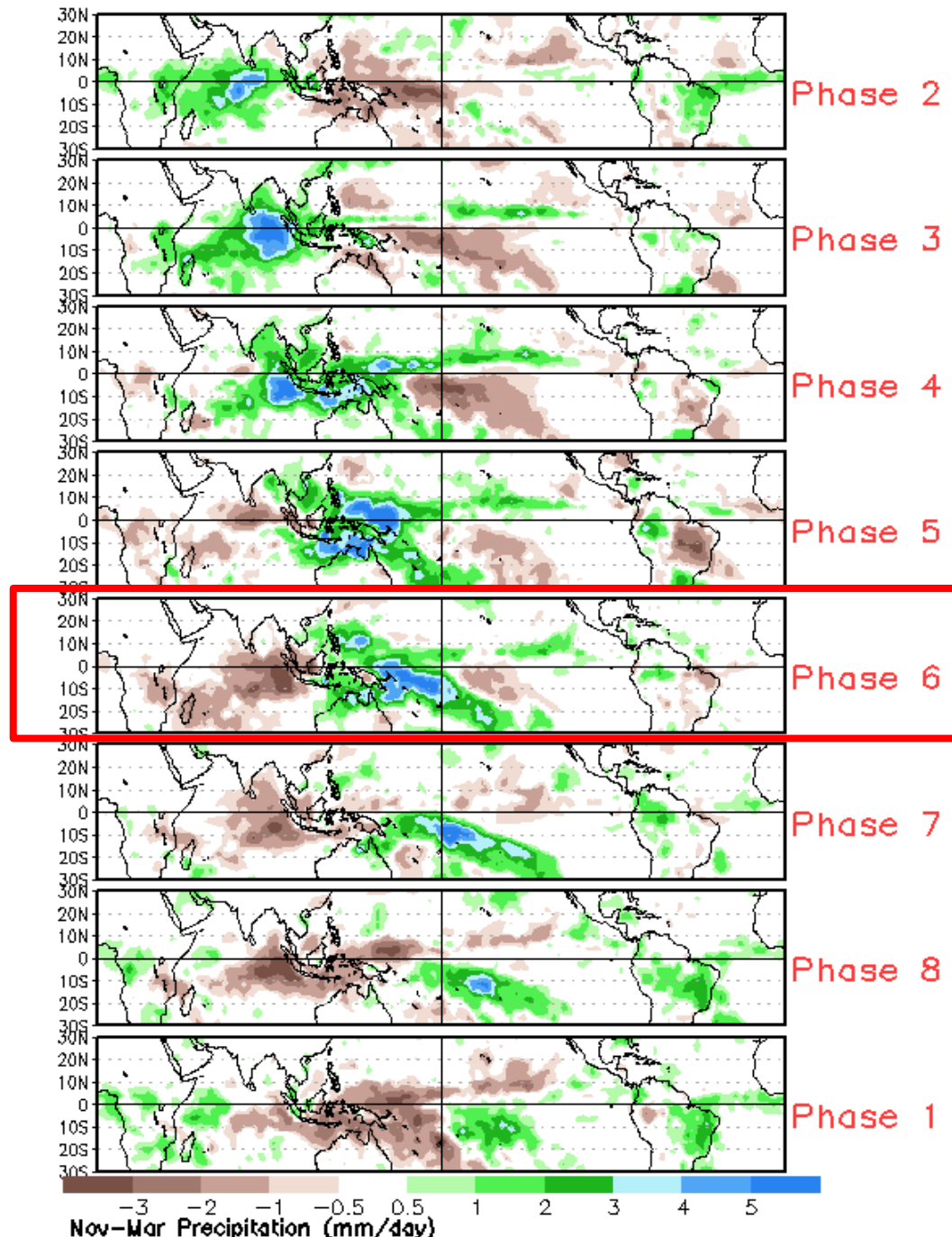
18 NOV 2012



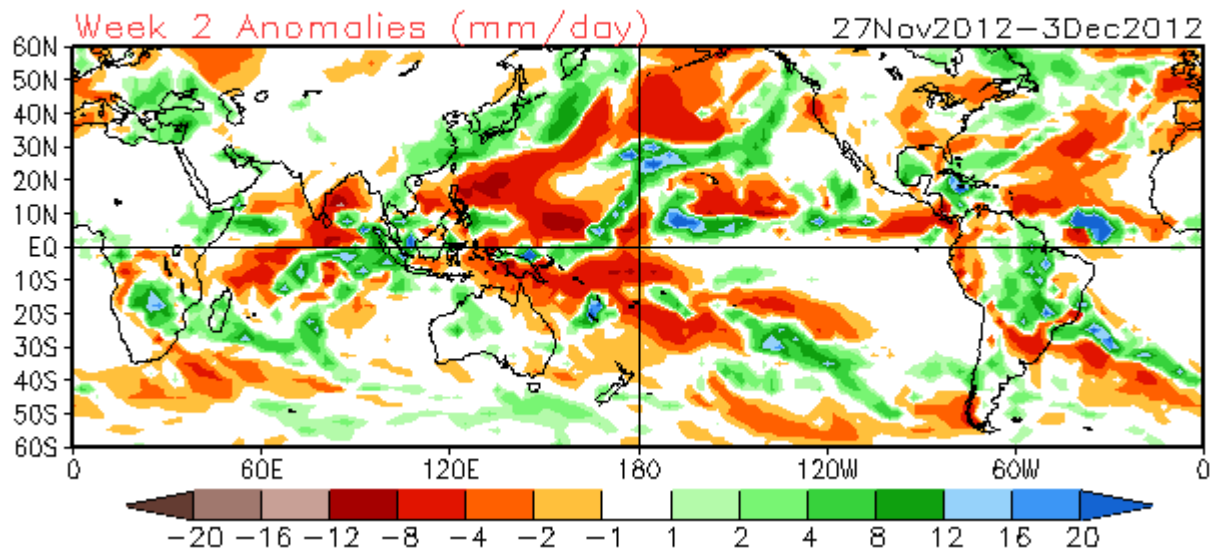
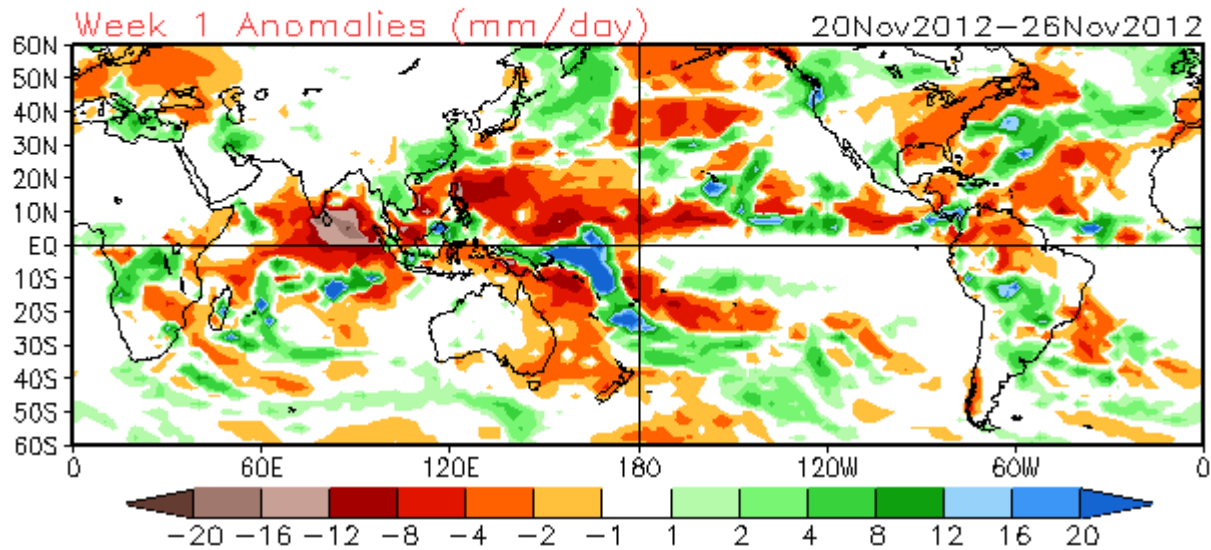
MJO Observation/Forecast



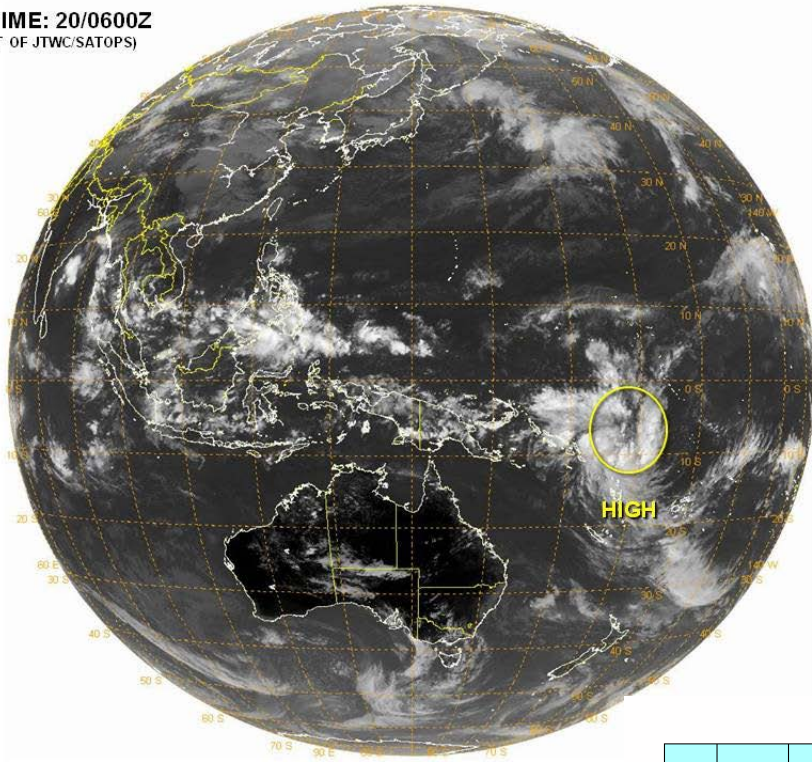
Average Conditions when the MJO is present (Nov-Mar)



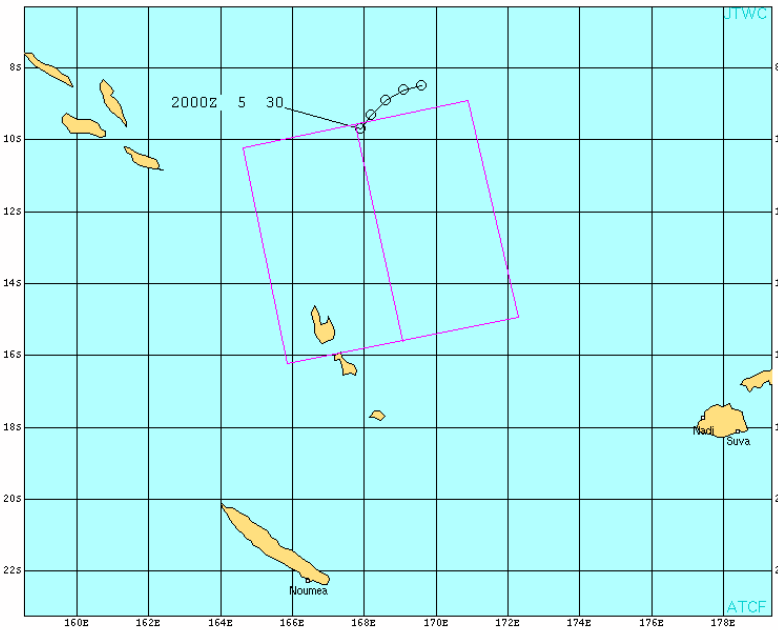
CFSv2 Weeks 1 & 2 Precipitation
16 Member Ensemble Mean Forecast from 19Nov2012



VALID TIME: 20/0600Z
(PRODUCT OF JTWC/SATOPS)



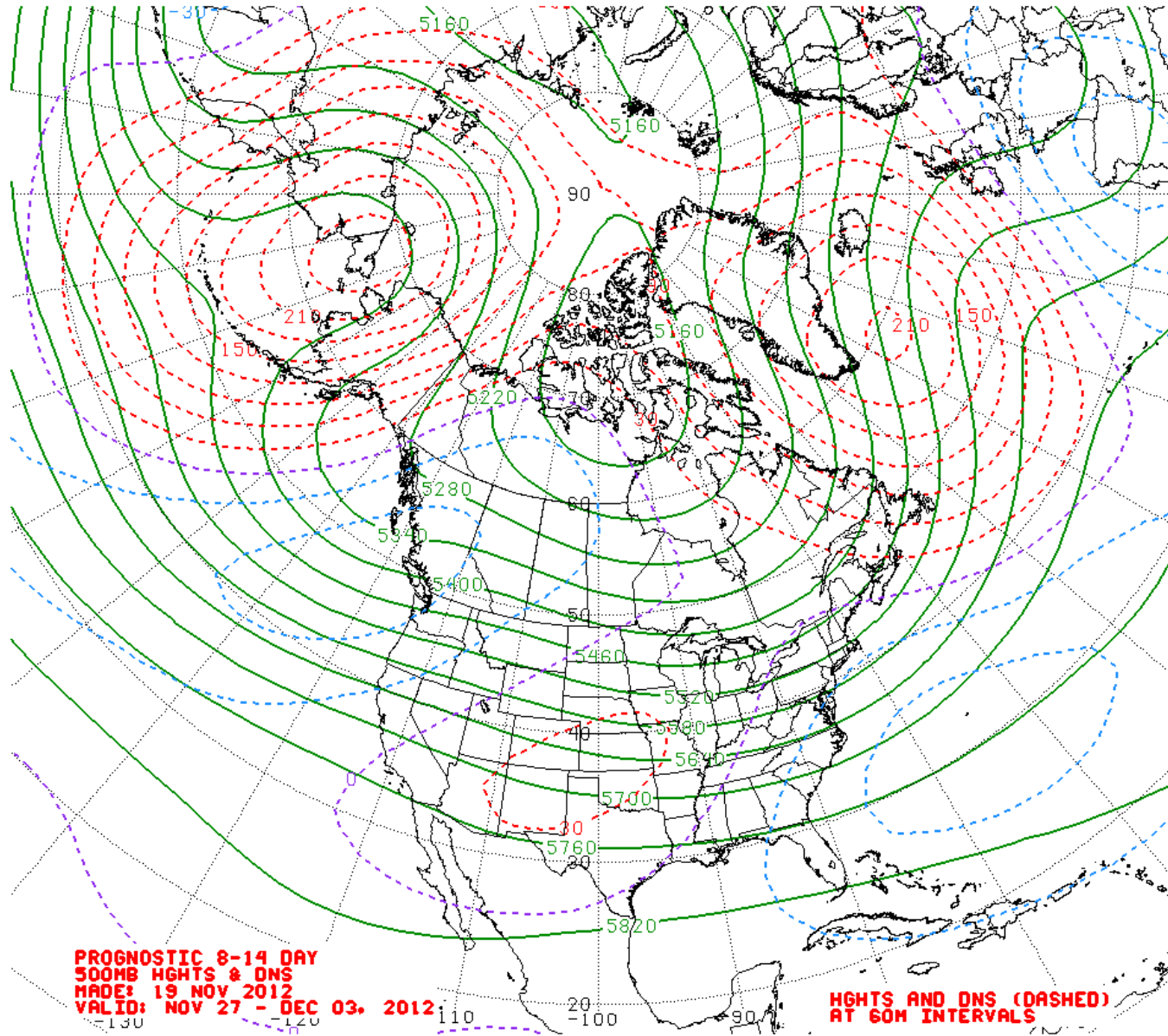
Joint Typhoon Warning Center



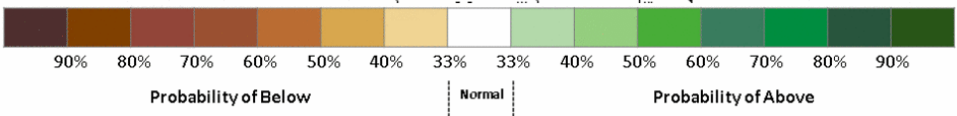
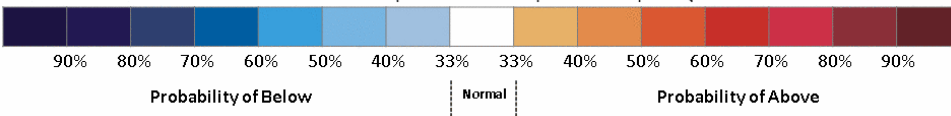
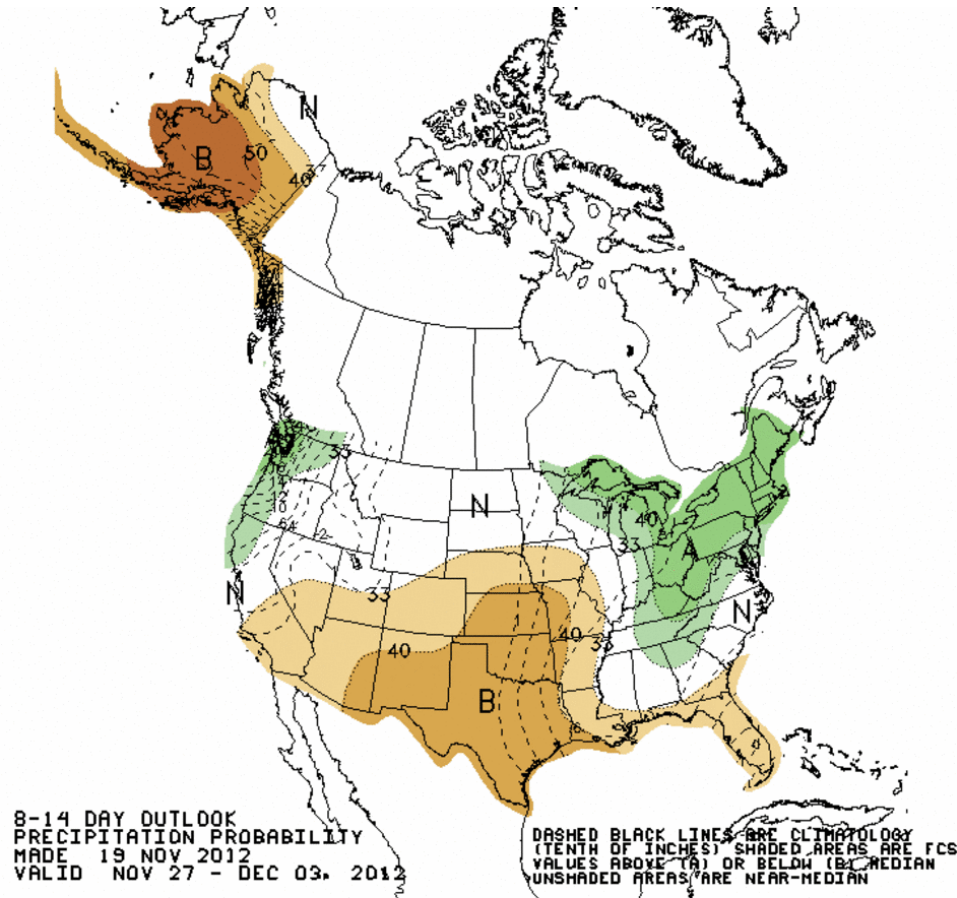
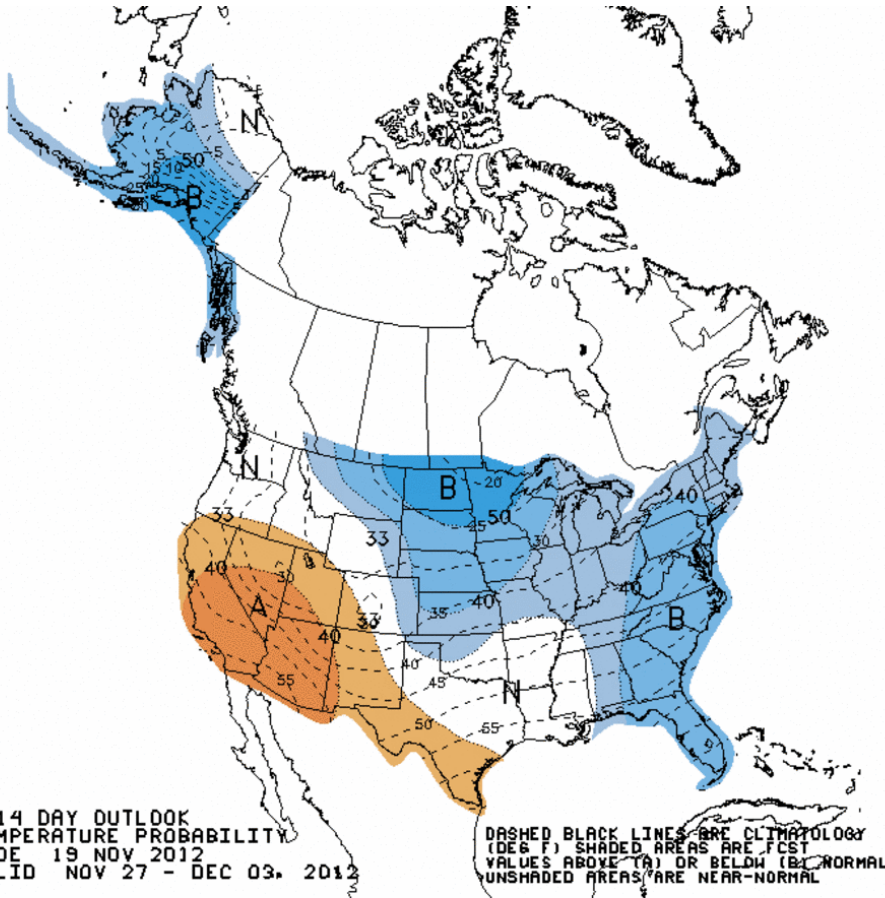
TROPICAL CYCLONE FORMATION ALERT
WTS21 FSTW 200230
200000Z POSITION: NEAR 9.75 167.92
MOVING SOUTHWESTWARD AT 05 KNOTS
MAXIMUM SUSTAINED WINDS: 50 KNOTS



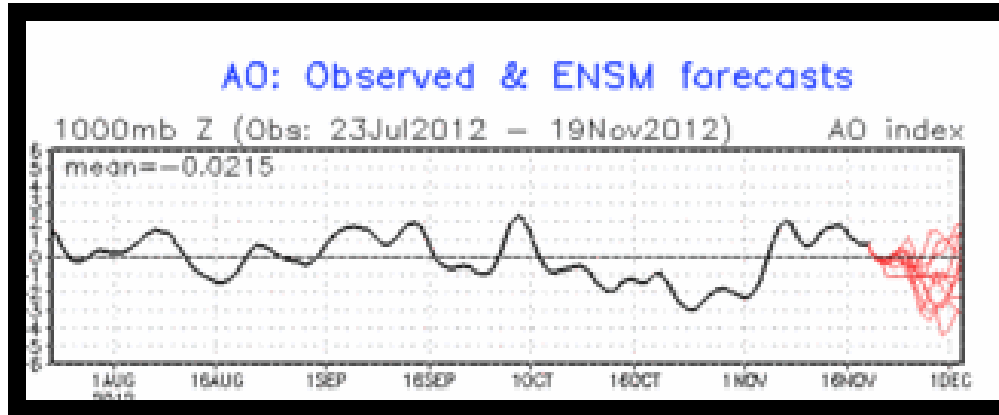
Week 2 500-hPa Manual Chart



Week 2 -- Temperature and Precipitation



Recent AO Observations and GEFS Forecast

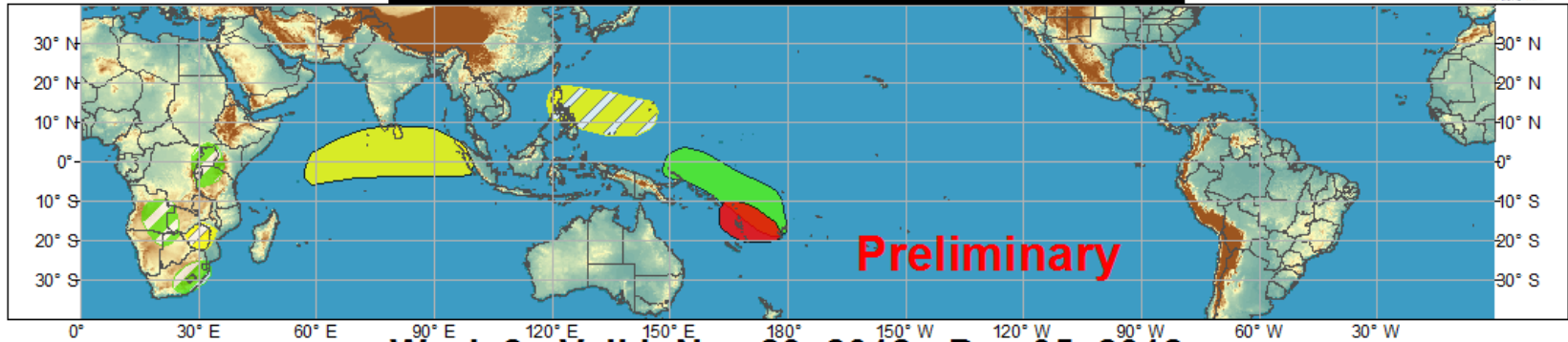




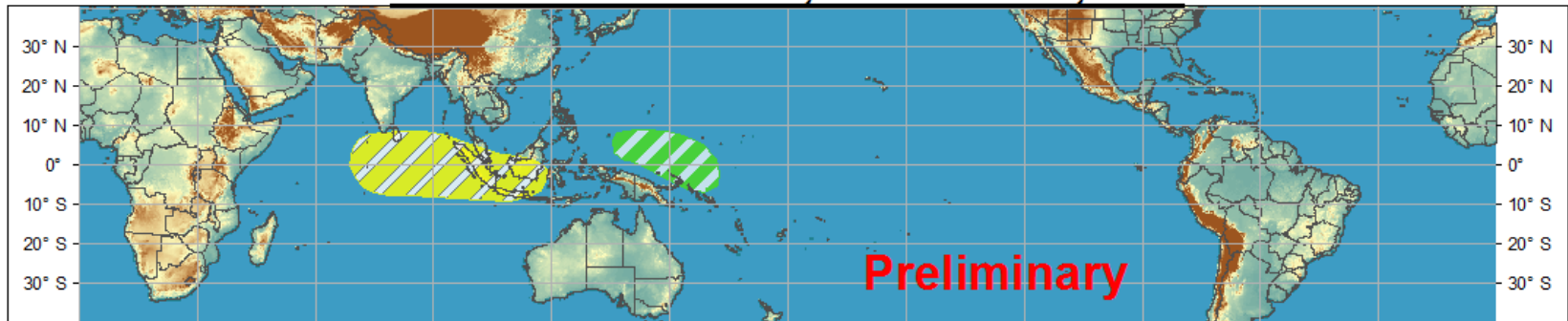
Global Tropical Hazards/Benefits Outlook - Climate Prediction Center



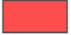









Week 1 - Valid: Nov 22, 2012 - Nov 28, 2012



Week 2 - Valid: Nov 29, 2012 - Dec 05, 2012



Confidence
High Moderate

- | | | |
|-----------------------------------|---|--|
| Tropical Cyclone Formation |   | Development of a tropical cyclone that eventually reaches tropical storm/cyclone strength. |
| Above-average rainfall |   | Weekly total rainfall in the upper third of the historical range. |
| Below-average rainfall |   | Weekly total rainfall in the lower third of the historical range. |
| Above-normal temperatures |   | 7-day mean temperatures in the upper third of the historical range. |
| Below-normal temperatures |   | 7-day mean temperatures in the lower third of the historical range. |

Product is updated once per week. The product targets broad scale conditions integrated over a 7-day period for US interests only. Consult your local responsible forecast agency.



Produced: 11/20/2012
Forecaster: Gottschalck