

Global Tropics Hazards And Benefits Outlook

January 1, 2013

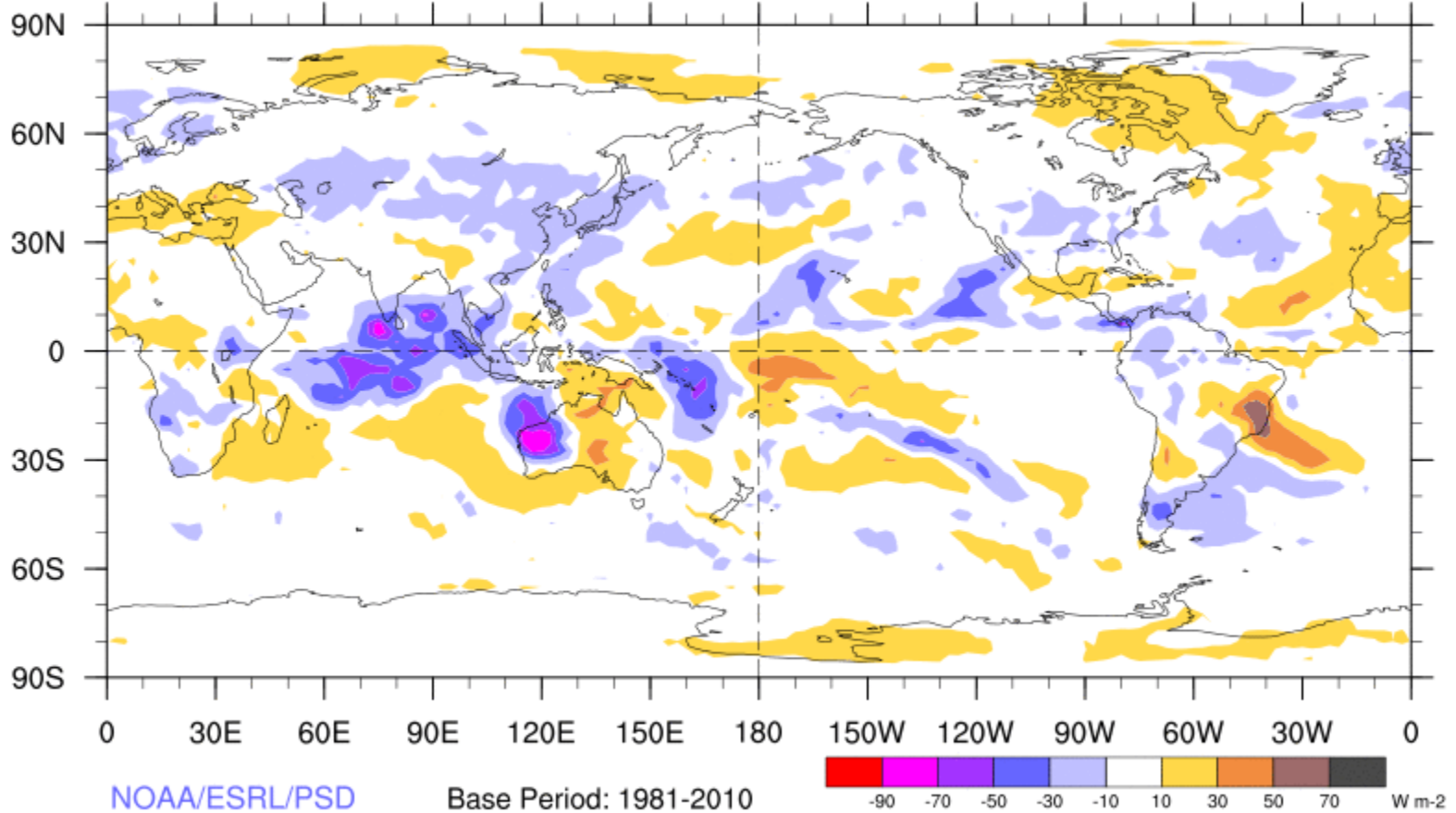
Steve Baxter

Outline

1. Review of Recent Conditions
2. Synopsis of Climate Modes
3. GTH Outlook and Forecast Discussion

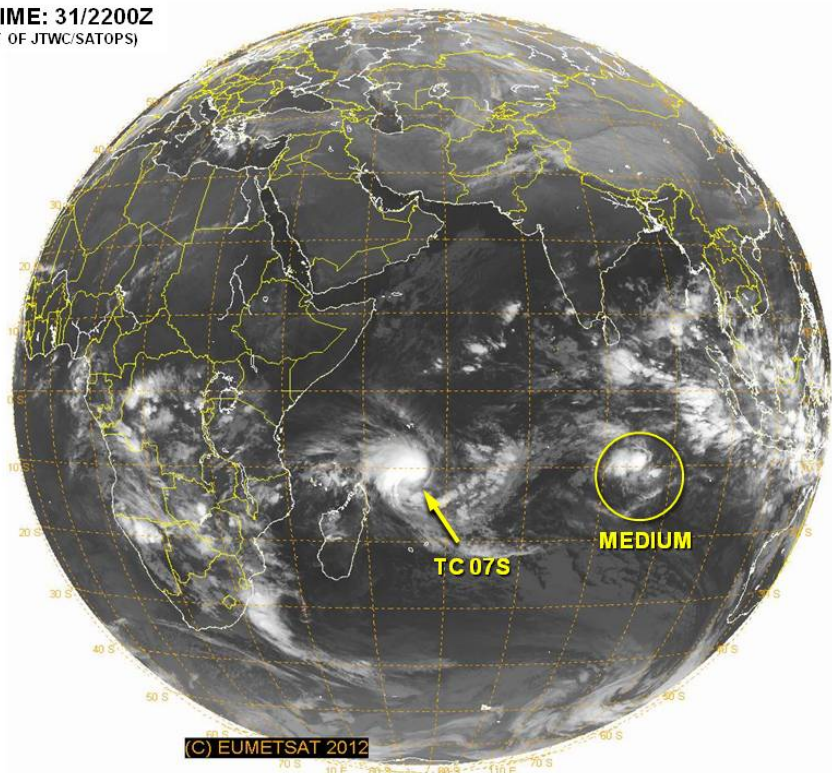
7-Day Average OLR Anomaly

2012/12/24 - 2012/12/30

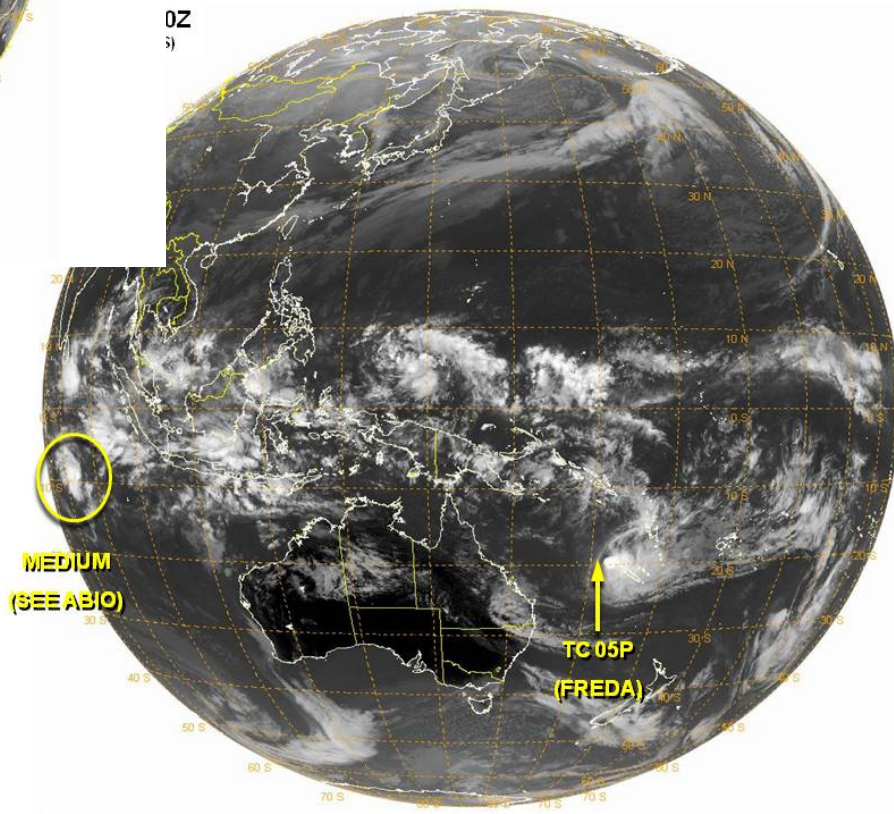


Tropical Cyclone Review

VALID TIME: 31/2200Z
(PRODUCT OF JTWC/SATOPS)

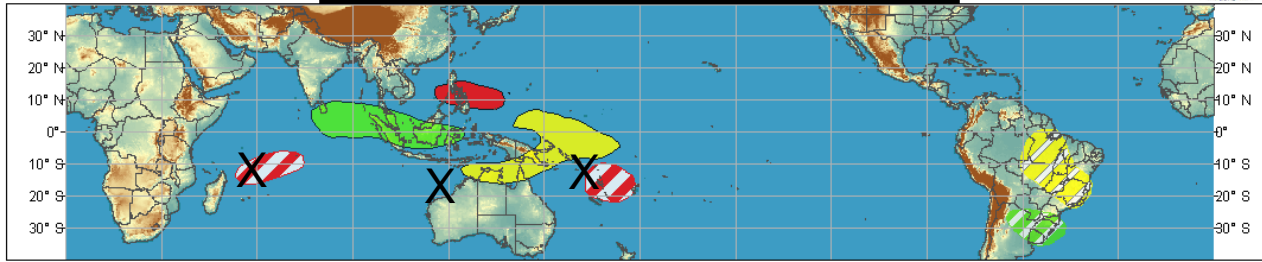


0Z
i)

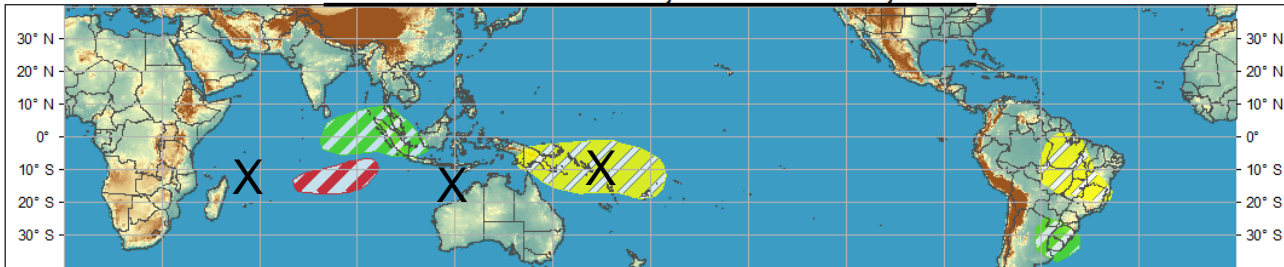




Week 1 - Valid: Dec 26, 2012 - Jan 01, 2013

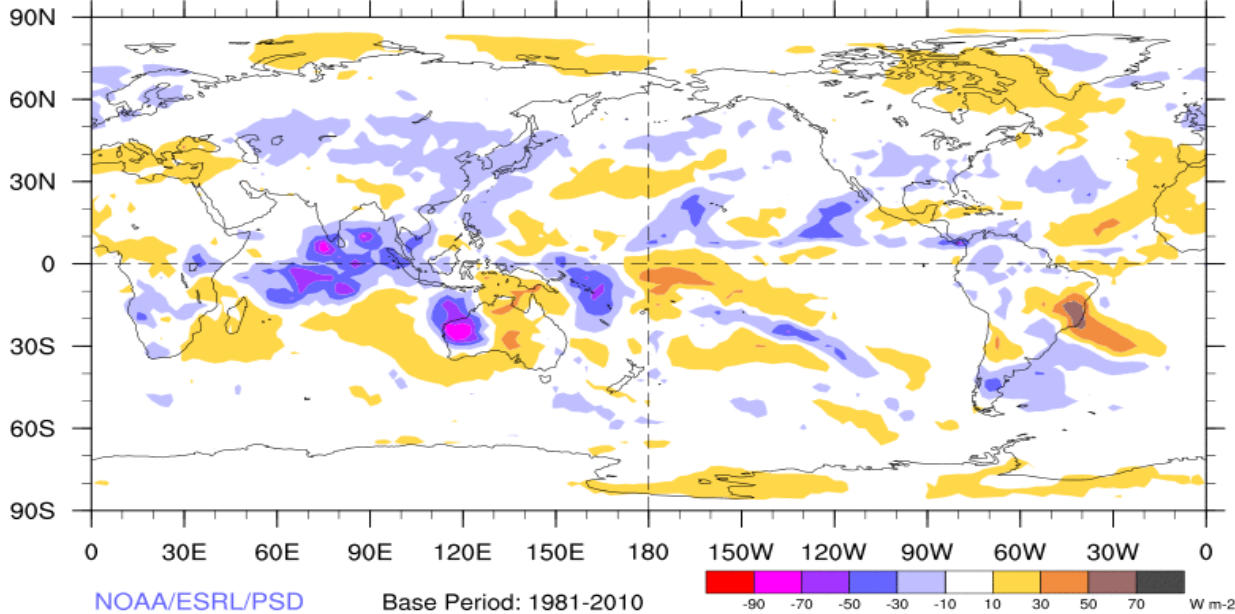


Week 2 - Valid: Dec 26, 2012 - Jan 01, 2013



7-Day Average OLR Anomaly

2012/12/24 - 2012/12/30



Outlook Review

Synopsis of Climate Modes

ENSO:

- ENSO-neutral conditions continue and ENSO-neutral is favored during the Northern Hemisphere winter 2012-13.

MJO and other subseasonal variability:

- The MJO has remained relatively weak, though is showing signs of strengthening and eastward propagation.
- Dynamical models are in good agreement that the MJO is more likely to propagate through phases 4 and 5 over the next two weeks.
- There is still some westward propagating convection associated with an equatorial Rossby wave. Additionally there are faster-moving eastward propagating atmospheric Kelvin waves that partially obscure the MJO.

Extratropics:

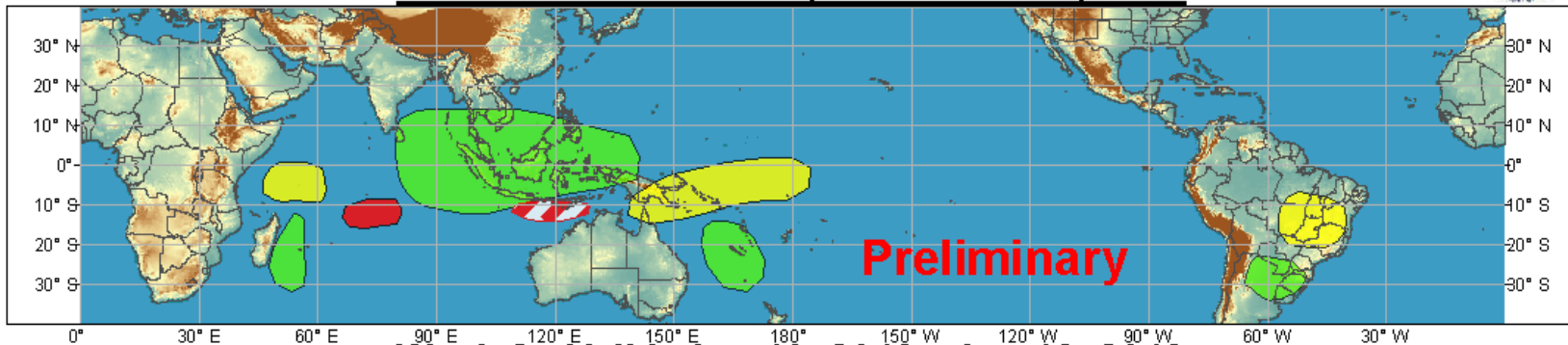
- AO/NAO forecast to be positive to neutral. Additionally, the PNA is forecast to trend toward neutral or negative. Tropical forcing of the mid-latitudes could be important over the next couple of weeks.



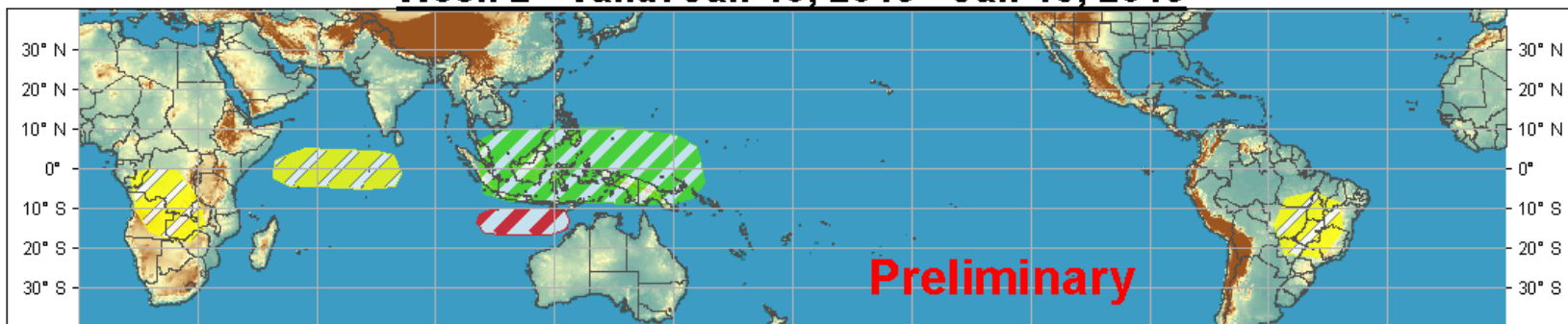
Global Tropical Hazards/Benefits Outlook - Climate Prediction Center



Week 1 - Valid: Jan 03, 2013 - Jan 09, 2013



Week 2 - Valid: Jan 10, 2013 - Jan 16, 2013



Produced: 01/01/2013

Forecaster: Baxter

	Confidence		
	High	Moderate	
Tropical Cyclone Formation			Development of a tropical cyclone that eventually reaches tropical storm/cyclone strength.
Above-average rainfall			Weekly total rainfall in the upper third of the historical range.
Below-average rainfall			Weekly total rainfall in the lower third of the historical range.
Above-normal temperatures			7-day mean temperatures in the upper third of the historical range.
Below-normal temperatures			7-day mean temperatures in the lower third of the historical range.

Product is updated once per week. The product targets broad scale conditions integrated over a 7-day period for US interests only. Consult your local responsible forecast agency.

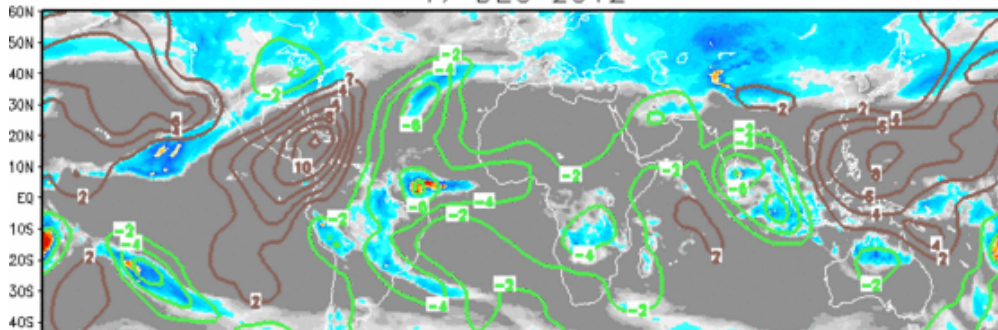


IR Satellite & 200-hpa Velocity Potential Anomalies

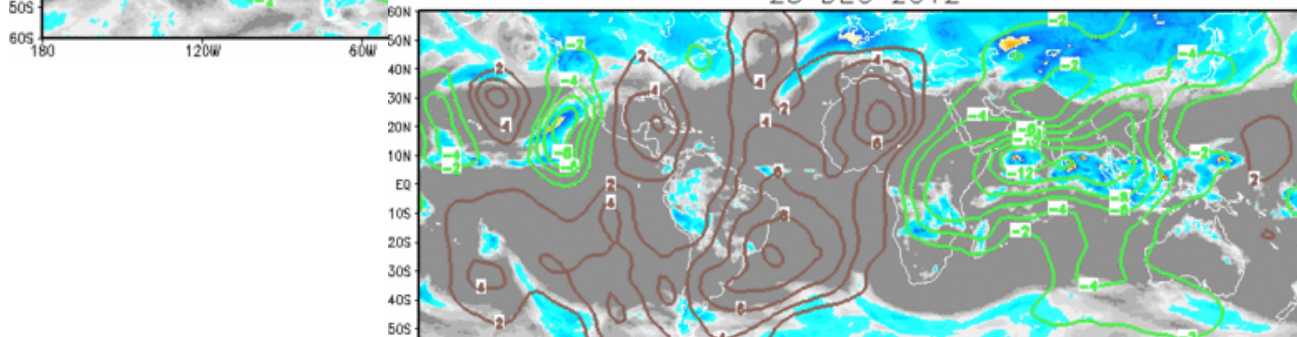
Green: Enhanced Divergence (supports rain)

Brown: Enhanced Convergence ()

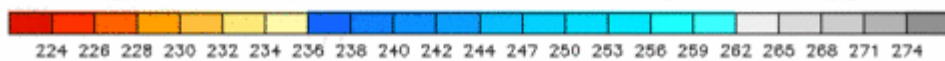
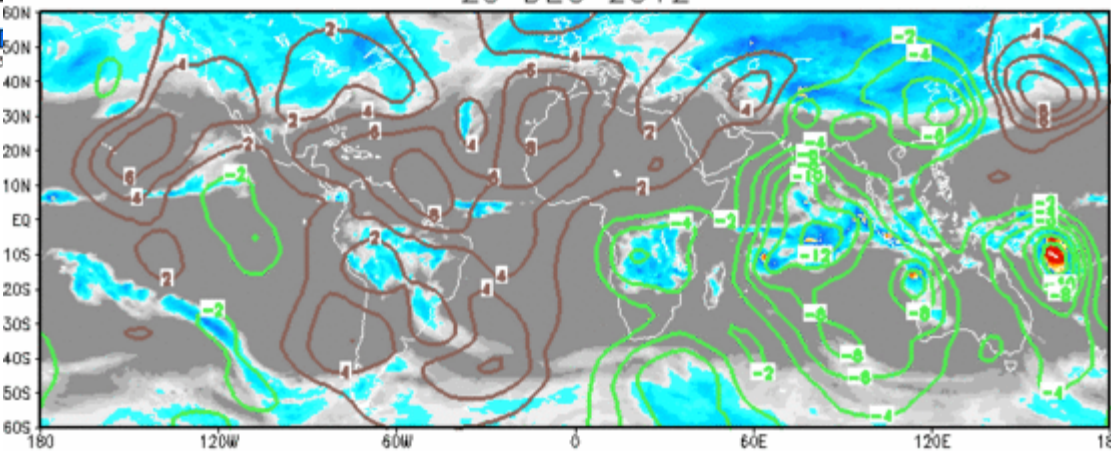
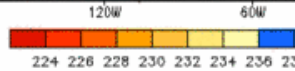
17 DEC 2012



23 DEC 2012

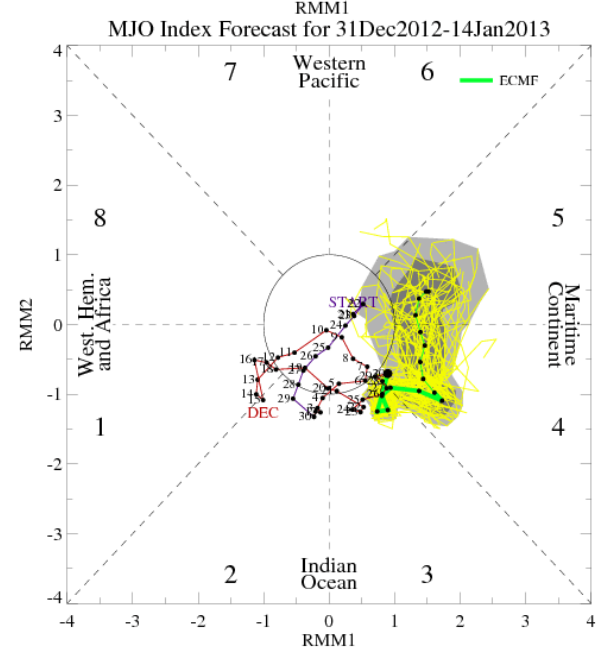
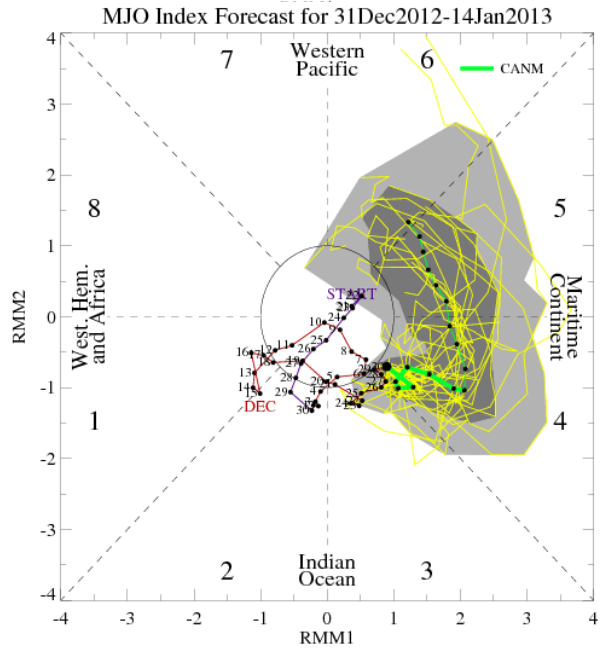
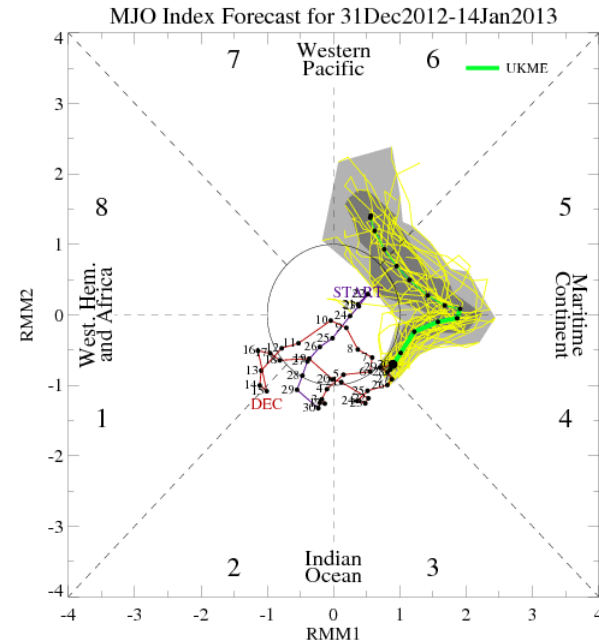
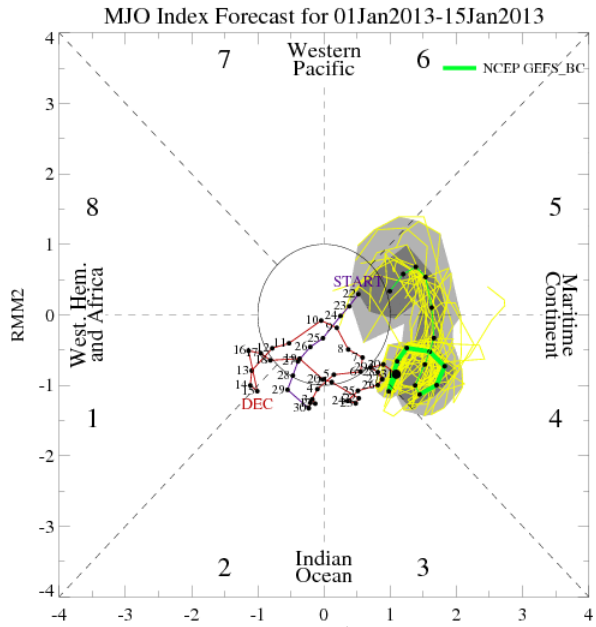


29 DEC 2012

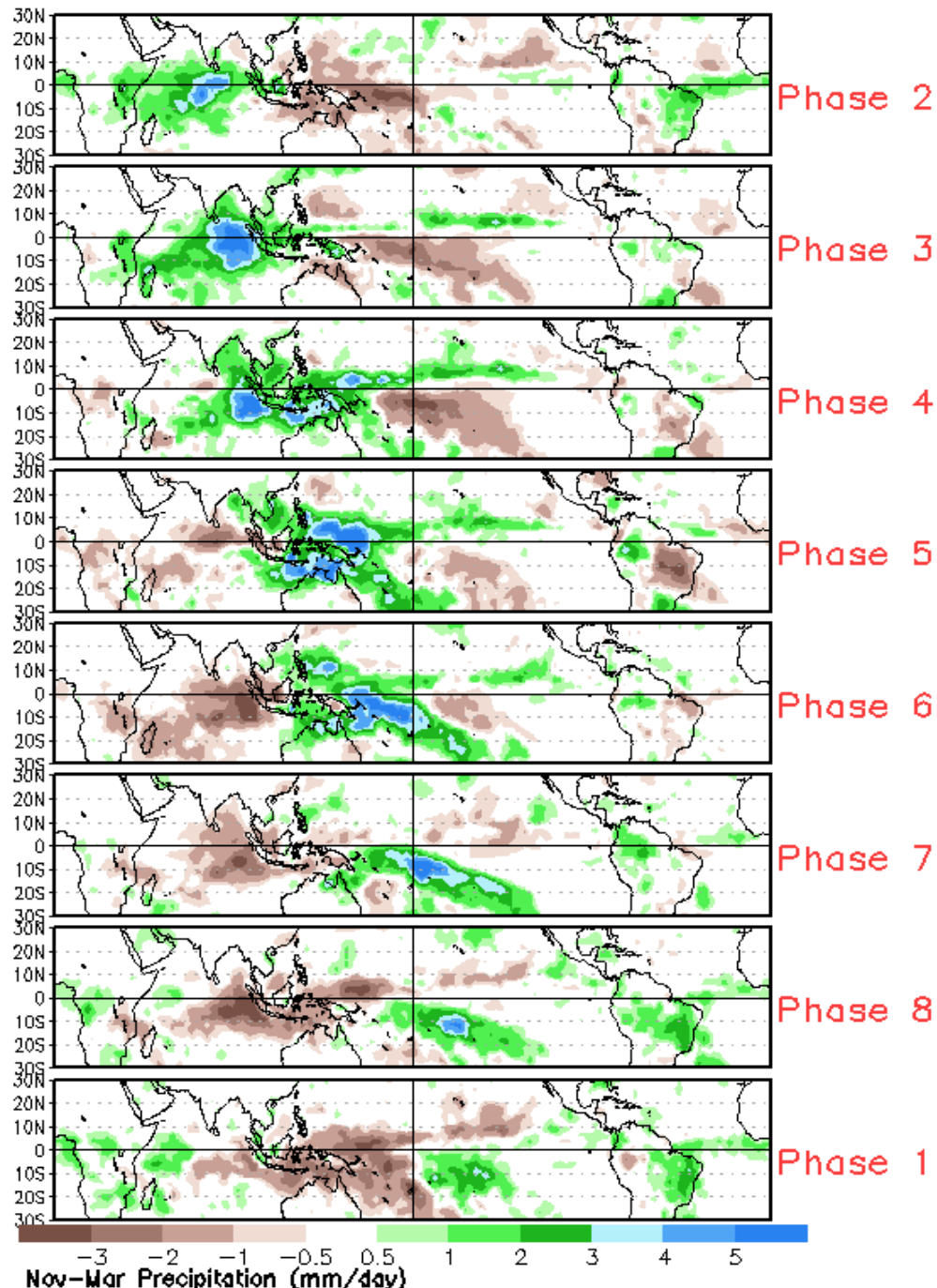


Degrees K

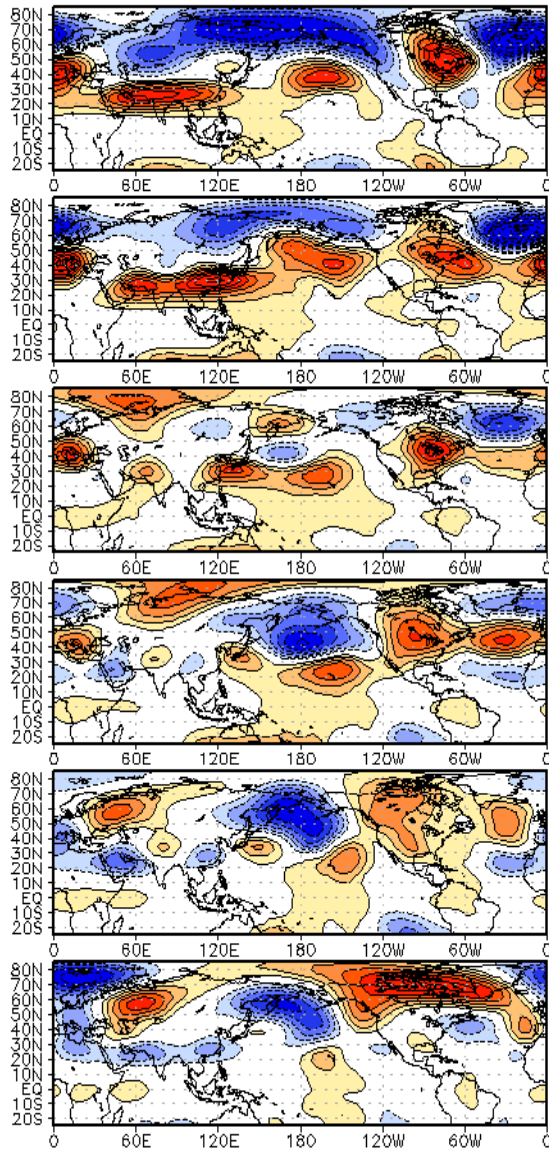
MJO Observation/Forecast



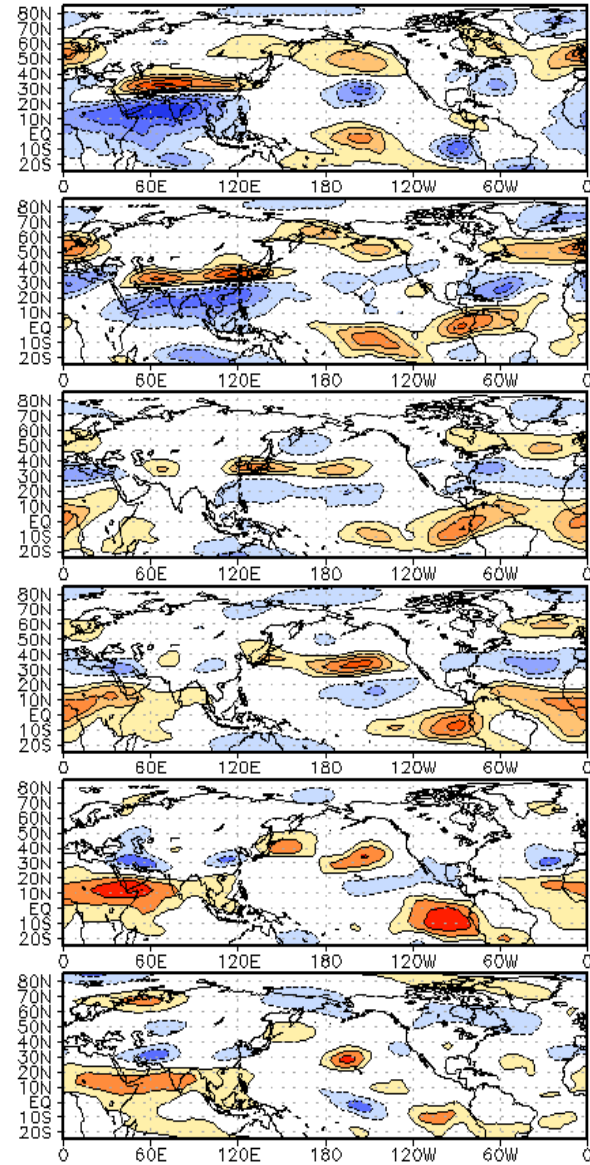
Average Conditions when the MJO is present (Nov-Mar)



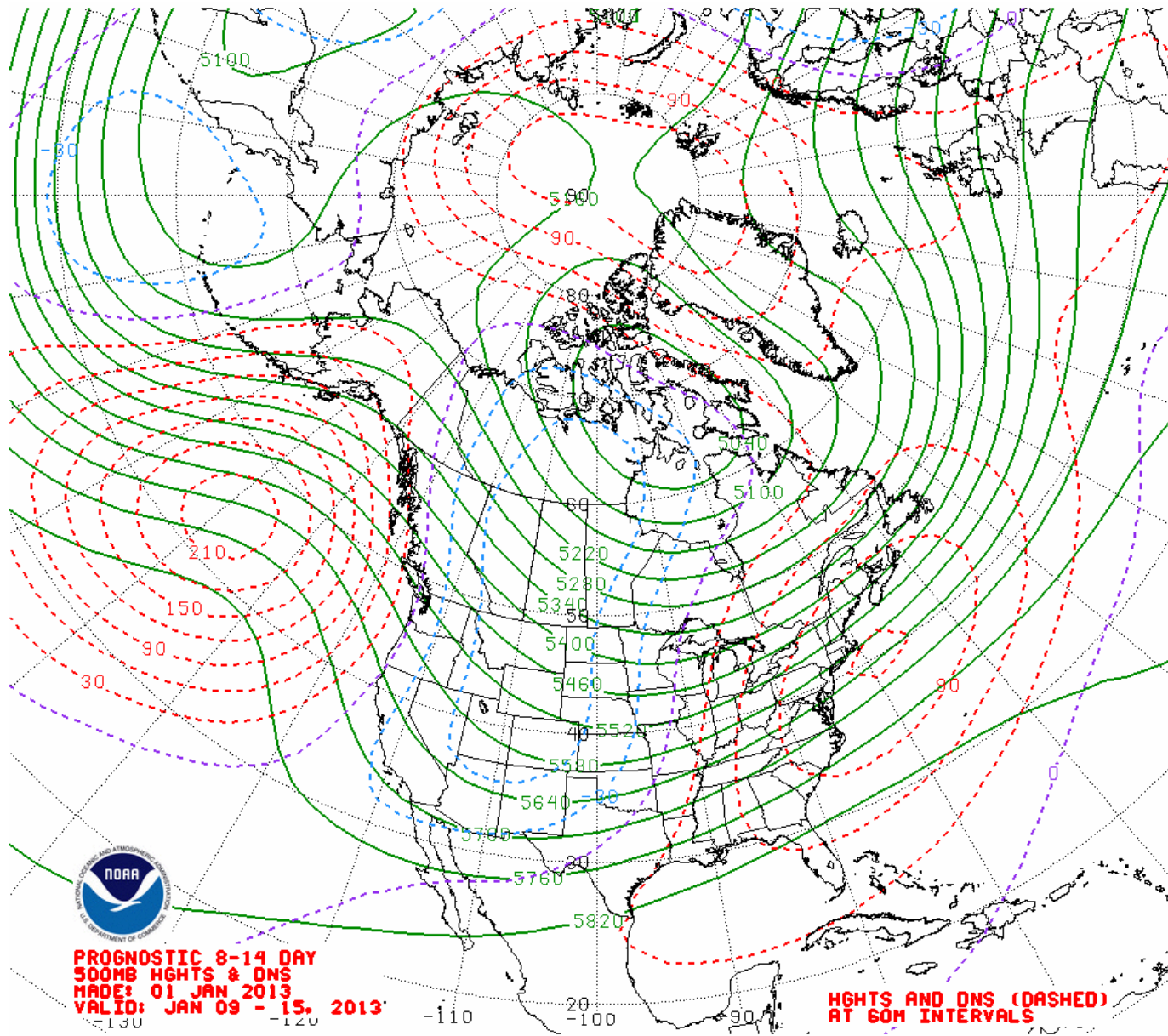
WHMJO Phase 4 z200 Lagged Composite (djf)



WHMJO Phase 4 u200 Lagged Composite (djf)



Week 2 500-hPa Manual Chart



Week 2 – Temperature and Precipitation

