

Global Tropics Hazards And Benefits Outlook

January 8, 2013

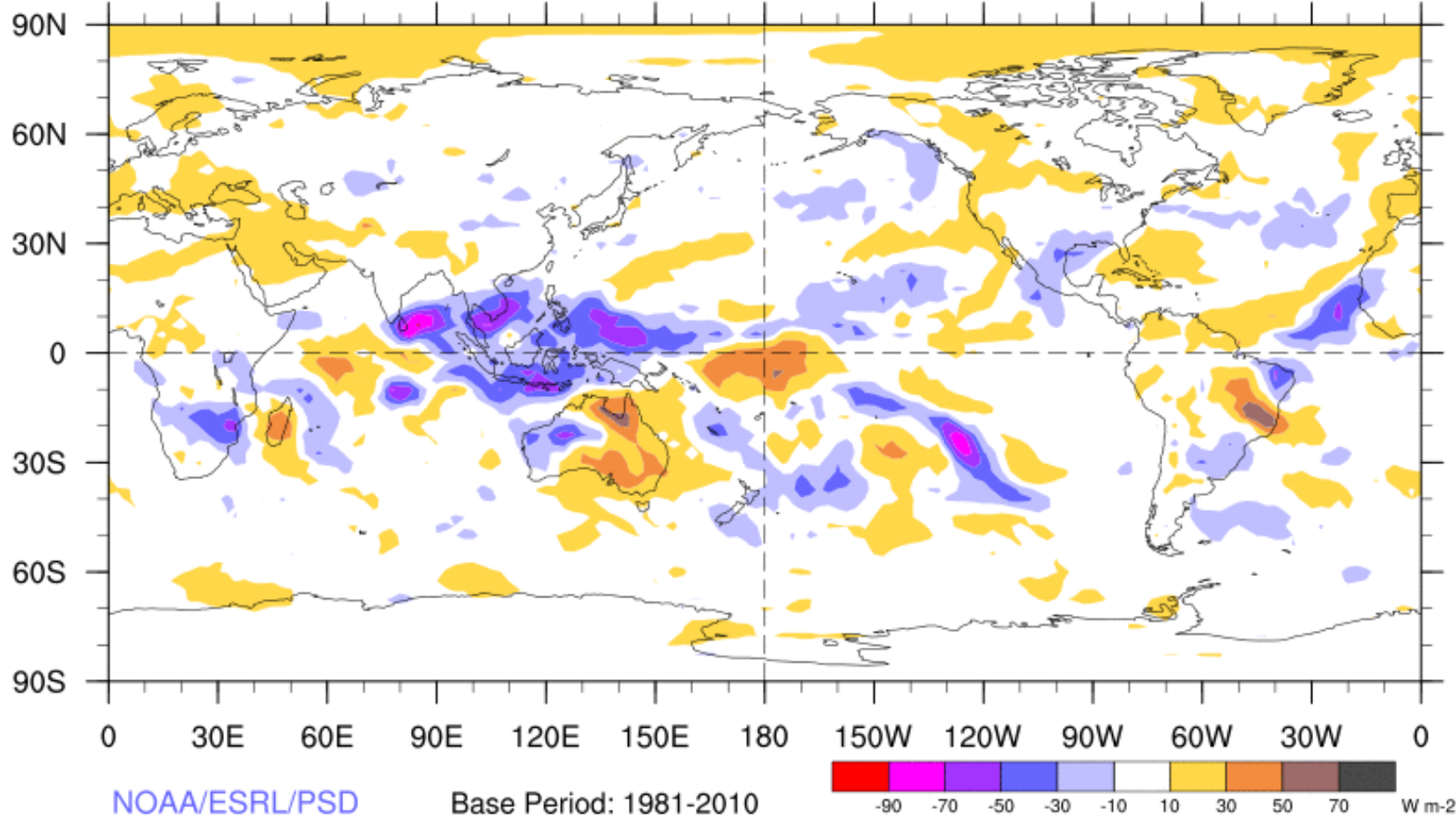
Steve Baxter

Outline

1. Review of Recent Conditions
2. Synopsis of Climate Modes
3. GTH Outlook and Forecast Discussion

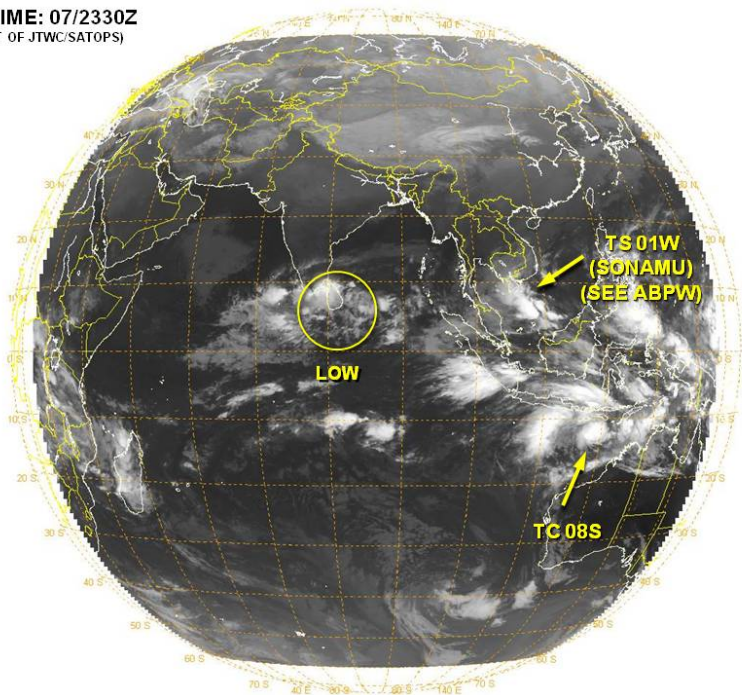
7-Day Average OLR Anomaly

2012/12/31 - 2013/01/06

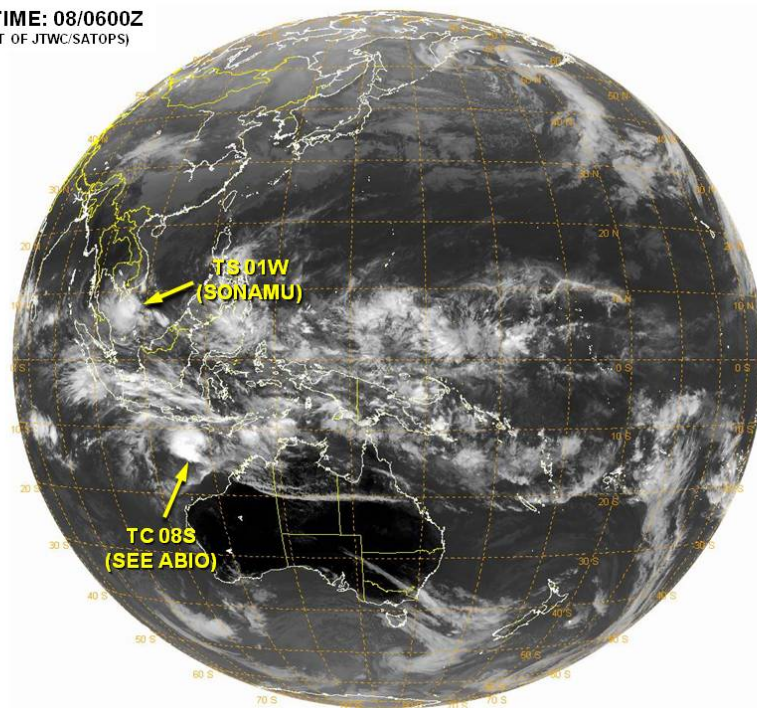


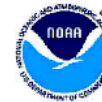
Tropical Cyclone Review

VALID TIME: 07/2330Z
(PRODUCT OF JTWC/SATOPS)

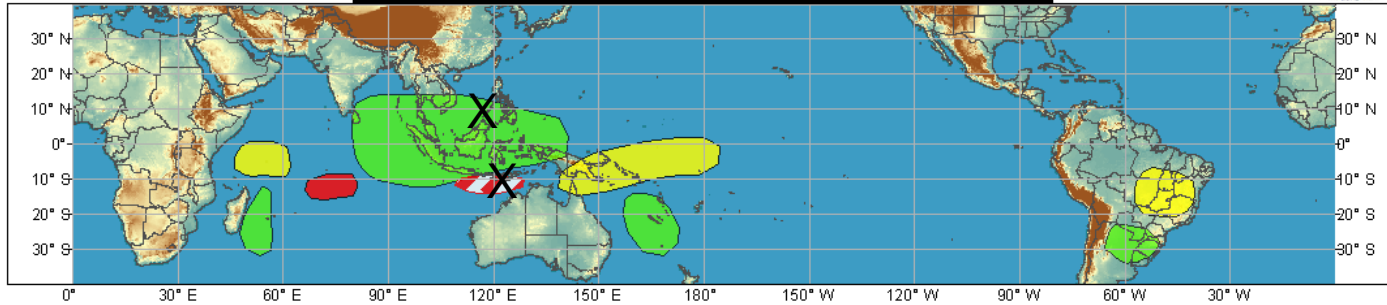


VALID TIME: 08/0600Z
(PRODUCT OF JTWC/SATOPS)

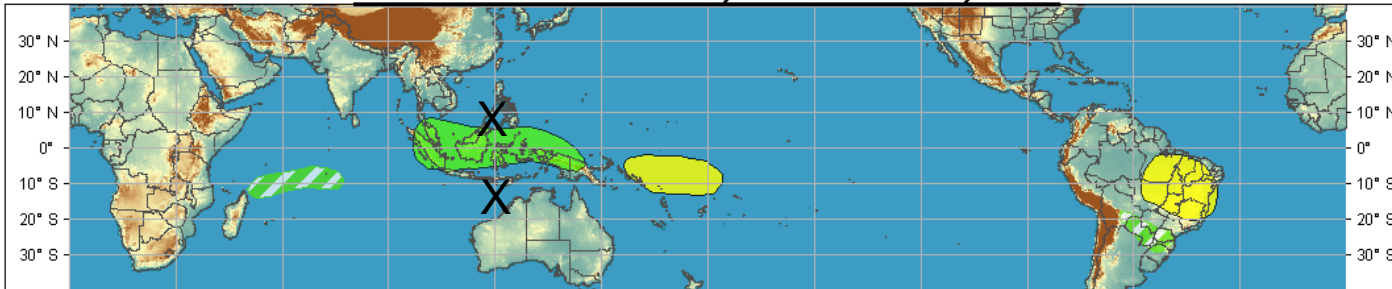




Week 1 - Valid: Jan 02, 2013 - Jan 08, 2013

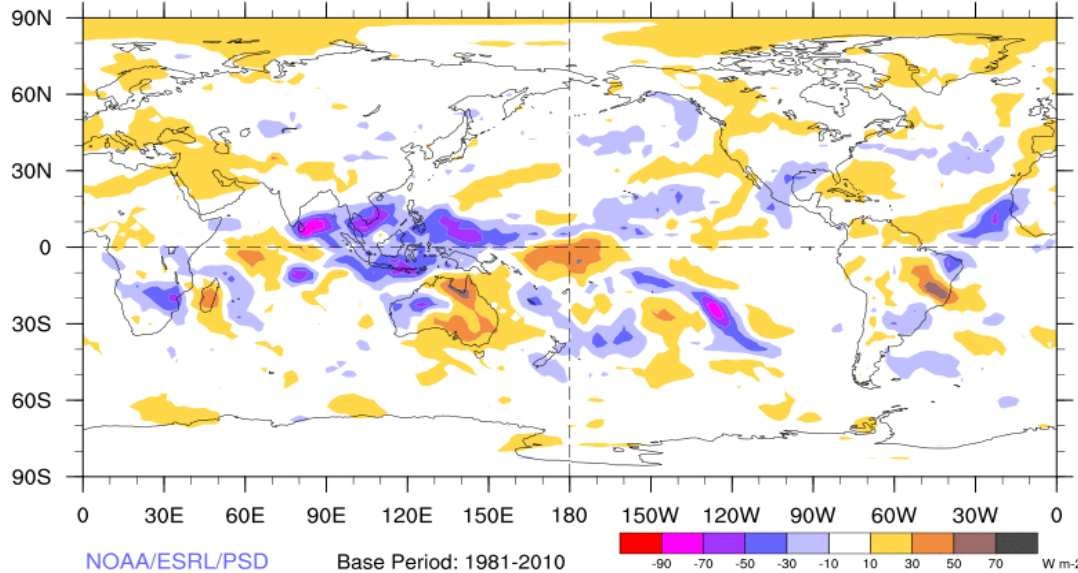


Week 2 - Valid: Jan 02, 2013 - Jan 08, 2013



7-Day Average OLR Anomaly

2012/12/31 - 2013/01/06



Outlook
Review

Synopsis of Climate Modes

ENSO:

- ENSO-neutral conditions continue and ENSO-neutral is favored during the Northern Hemisphere winter 2012-13.

MJO and other subseasonal variability:

- The MJO has strengthened substantially over the past several days.
- Dynamical models and statistical tools are in good agreement that the MJO is likely to propagate through phases 5 and 6 over the next two weeks.
- There is still some westward propagating convection associated with an equatorial Rossby wave. Additionally there are faster-moving eastward propagating atmospheric Kelvin waves that partially obscure the MJO.

Extratropics:

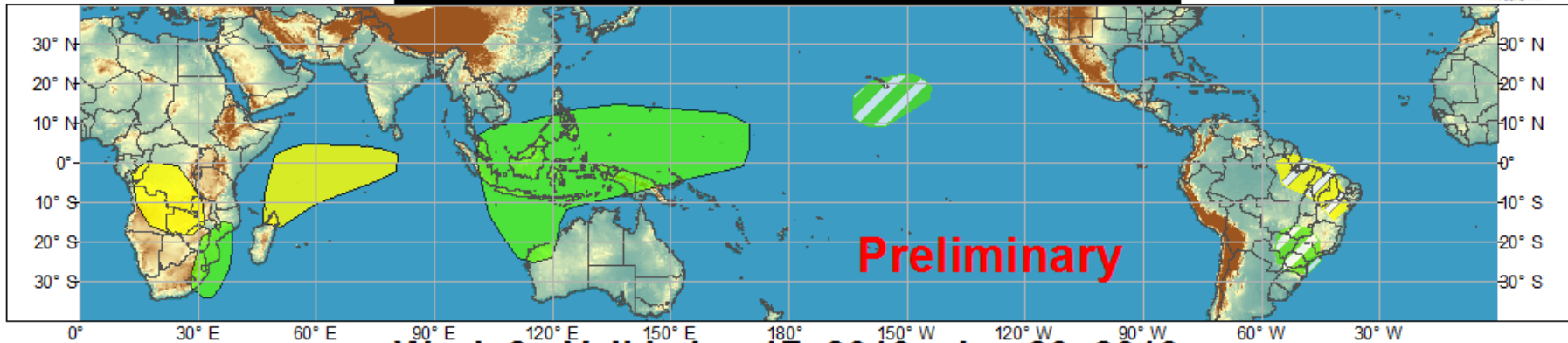
- AO/NAO forecast to be neutral to negative. Additionally, the PNA is forecast to trend toward neutral. Tropical forcing of the mid-latitudes could continue to be important over the next couple of weeks.



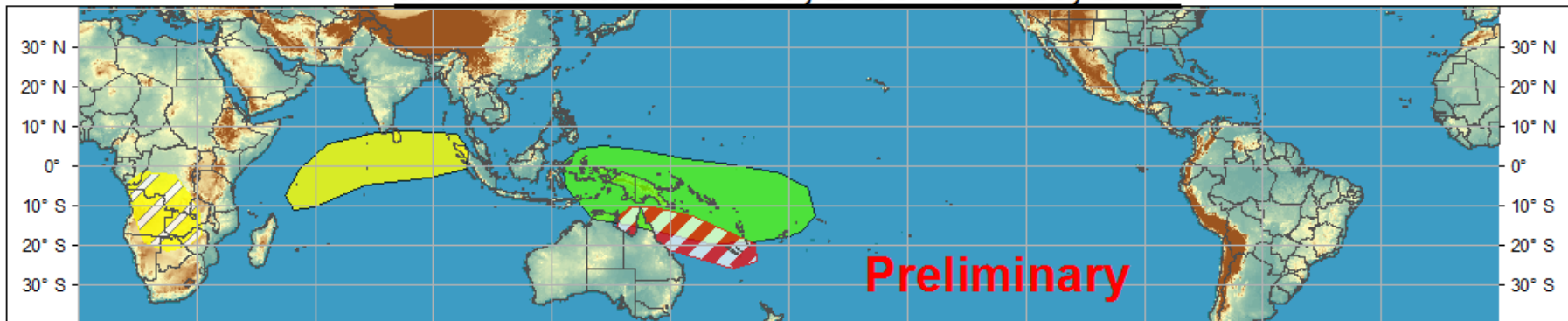
Global Tropical Hazards/Benefits Outlook - Climate Prediction Center



Week 1 - Valid: Jan 10, 2013 - Jan 16, 2013













Week 2 - Valid: Jan 17, 2013 - Jan 23, 2013



Produced: 01/08/2013

Forecaster: Baxter

		Confidence		
		High	Moderate	
Tropical Cyclone Formation				Development of a tropical cyclone that eventually reaches tropical storm/cyclone strength.
Above-average rainfall				Weekly total rainfall in the upper third of the historical range.
Below-average rainfall				Weekly total rainfall in the lower third of the historical range.
Above-normal temperatures				7-day mean temperatures in the upper third of the historical range.
Below-normal temperatures				7-day mean temperatures in the lower third of the historical range.

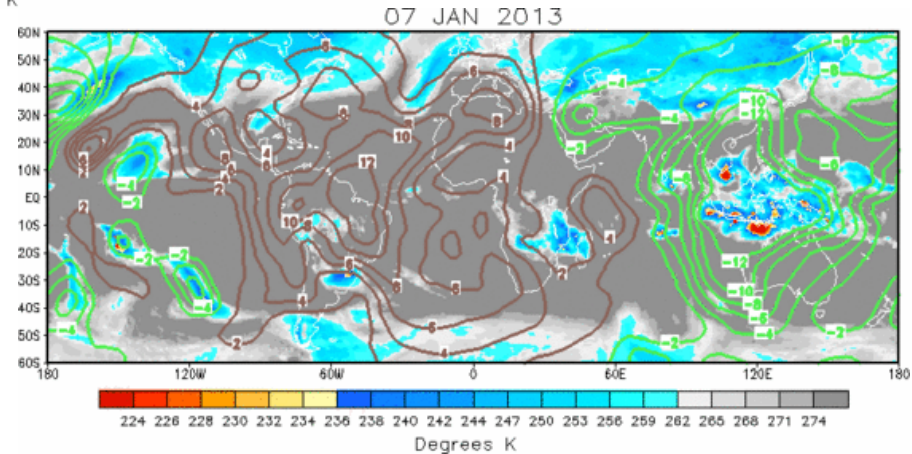
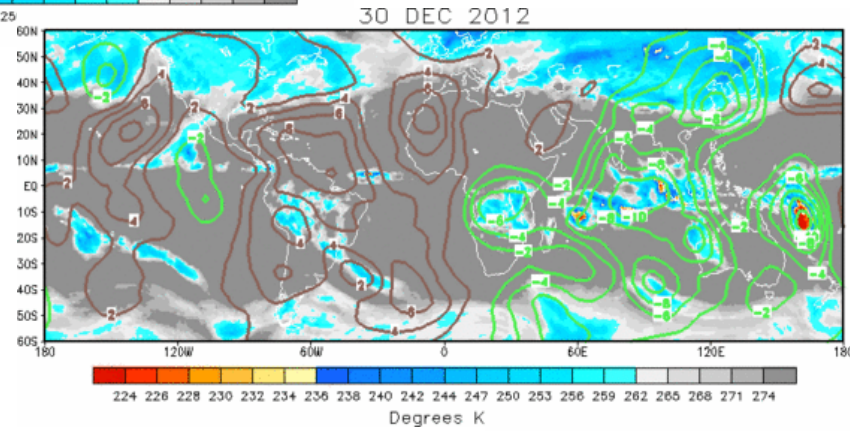
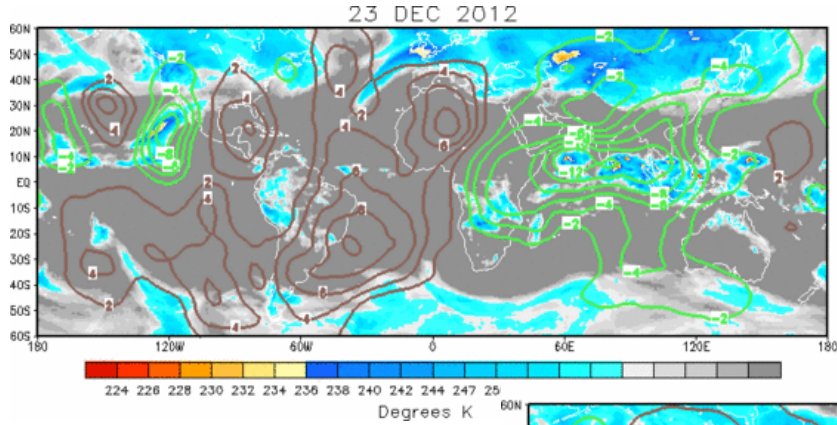
Product is updated once per week. The product targets broad scale conditions integrated over a 7-day period for US interests only. Consult your local responsible forecast agency.



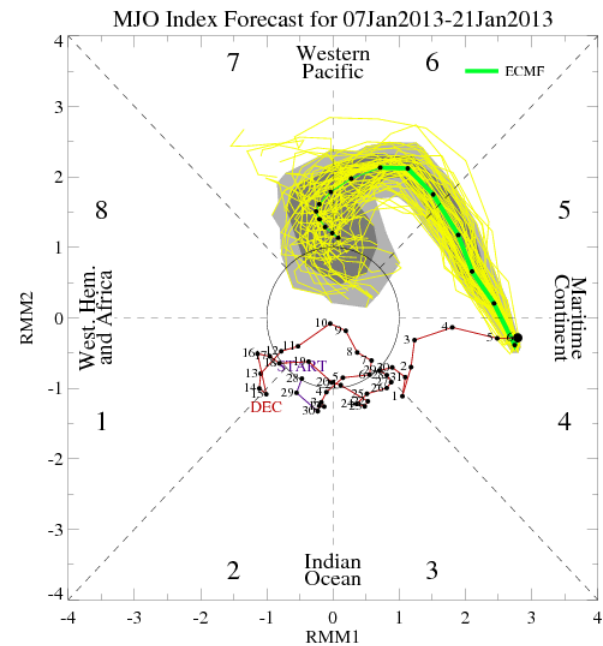
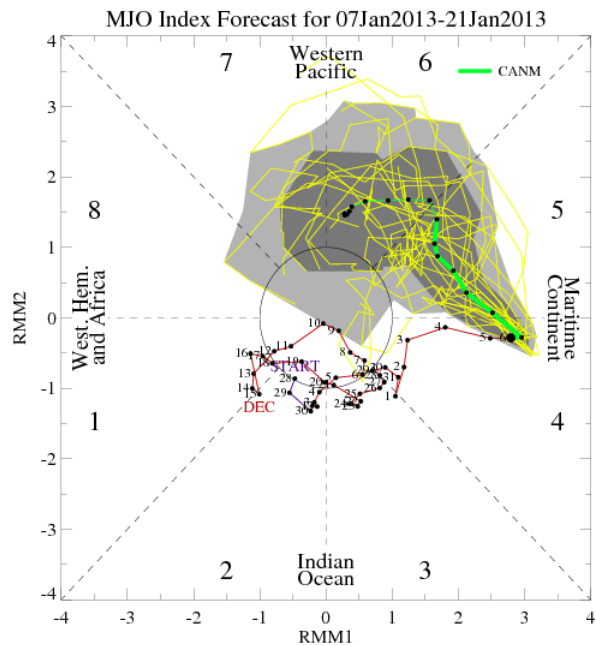
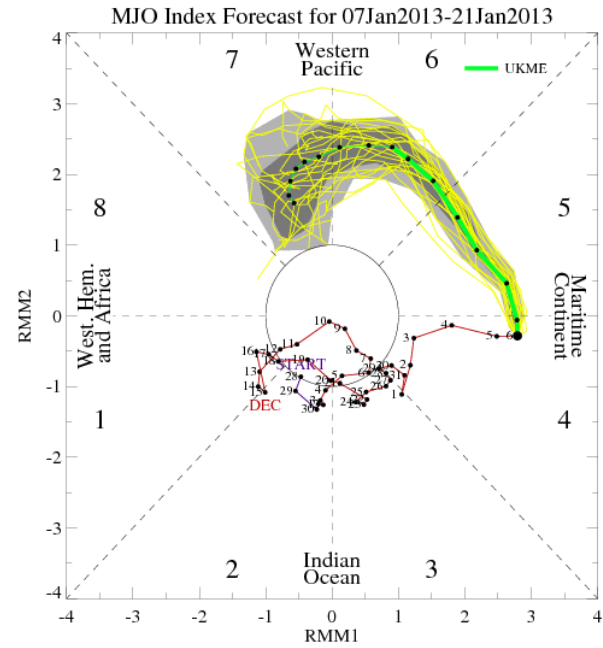
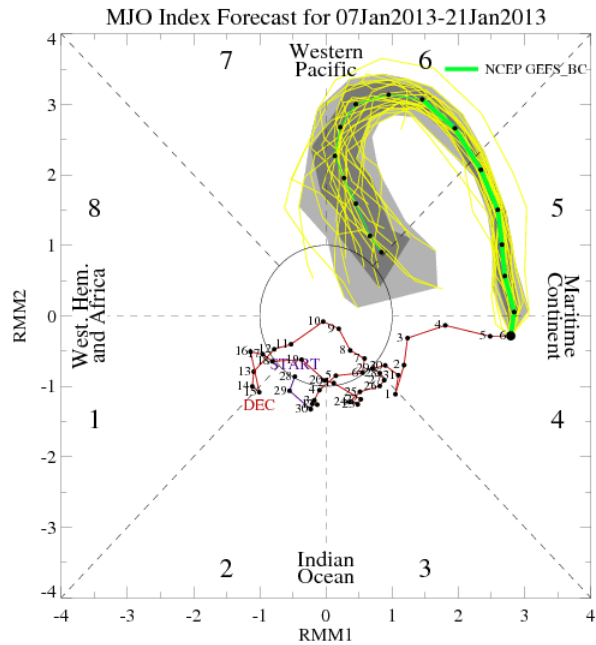
IR Satellite & 200-hpa Velocity Potential Anomalies

Green: Enhanced Divergence (supports rain)

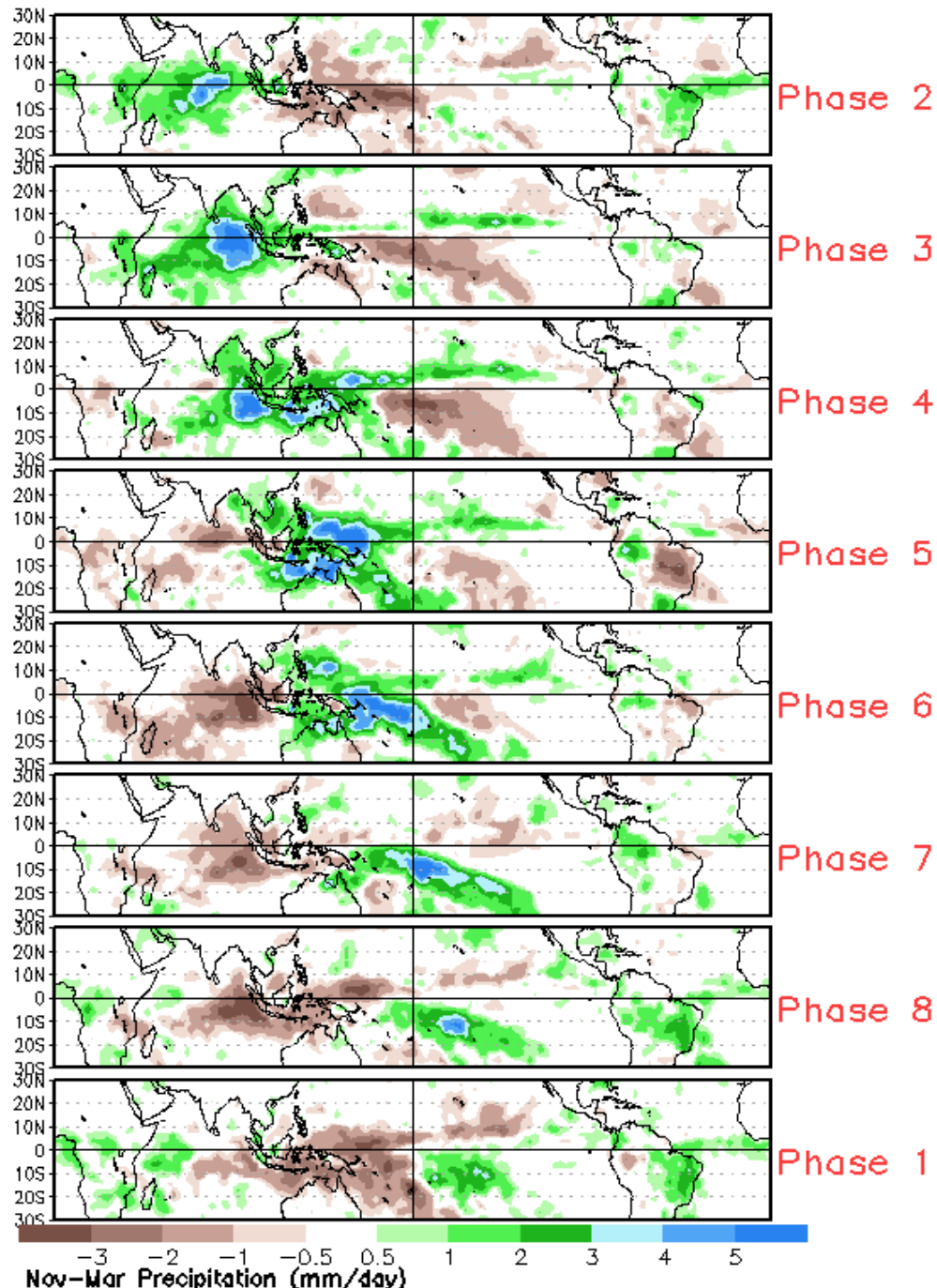
Brown: Enhanced Convergence ()



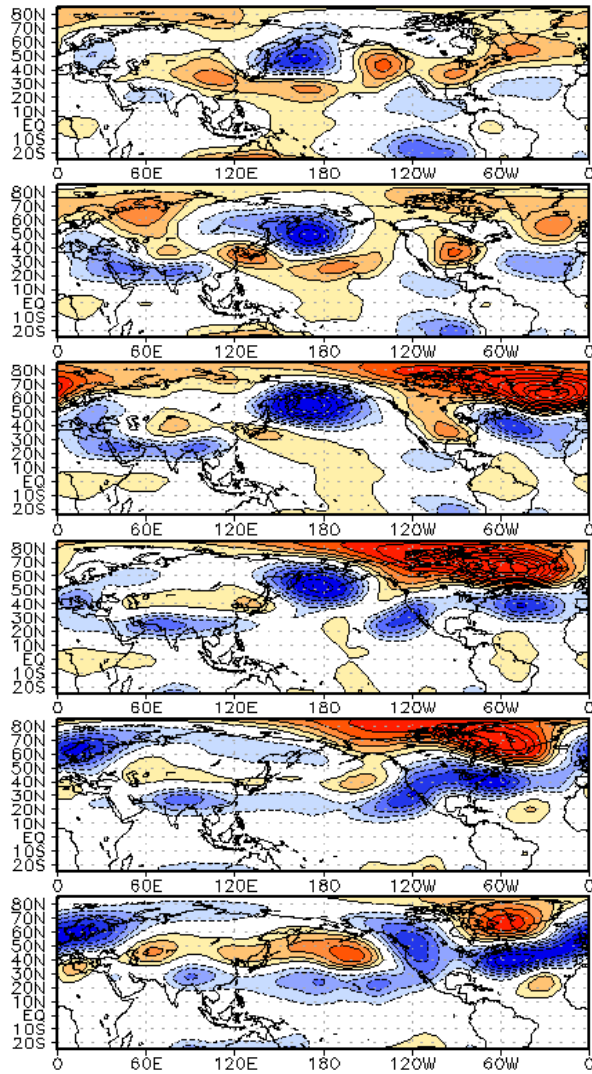
MJO Observation/Forecast



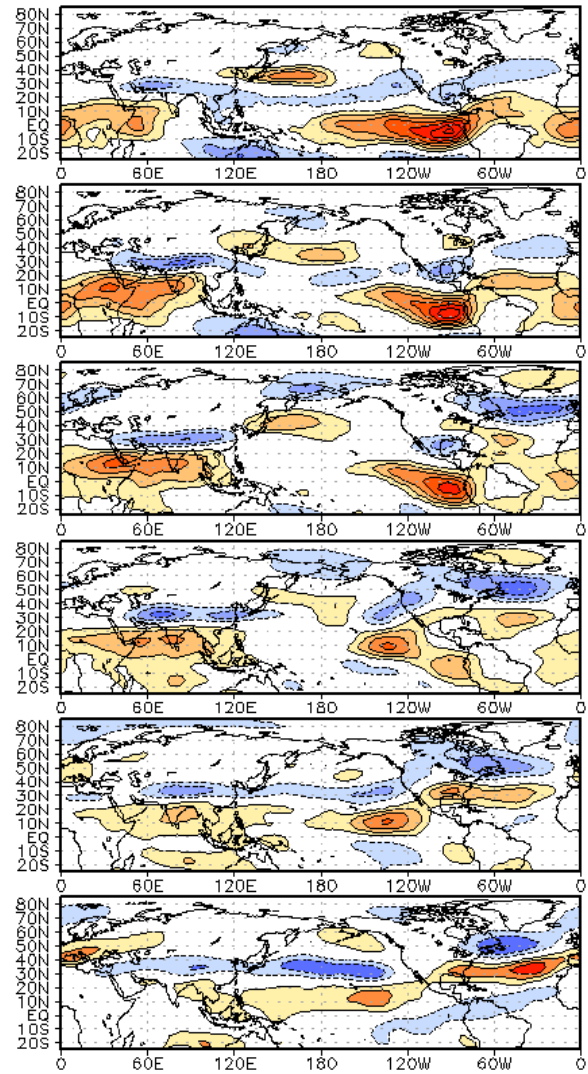
Average Conditions when the MJO is present (Nov-Mar)



WHMJO Phase 6 z200 Lagged Composite (djf)

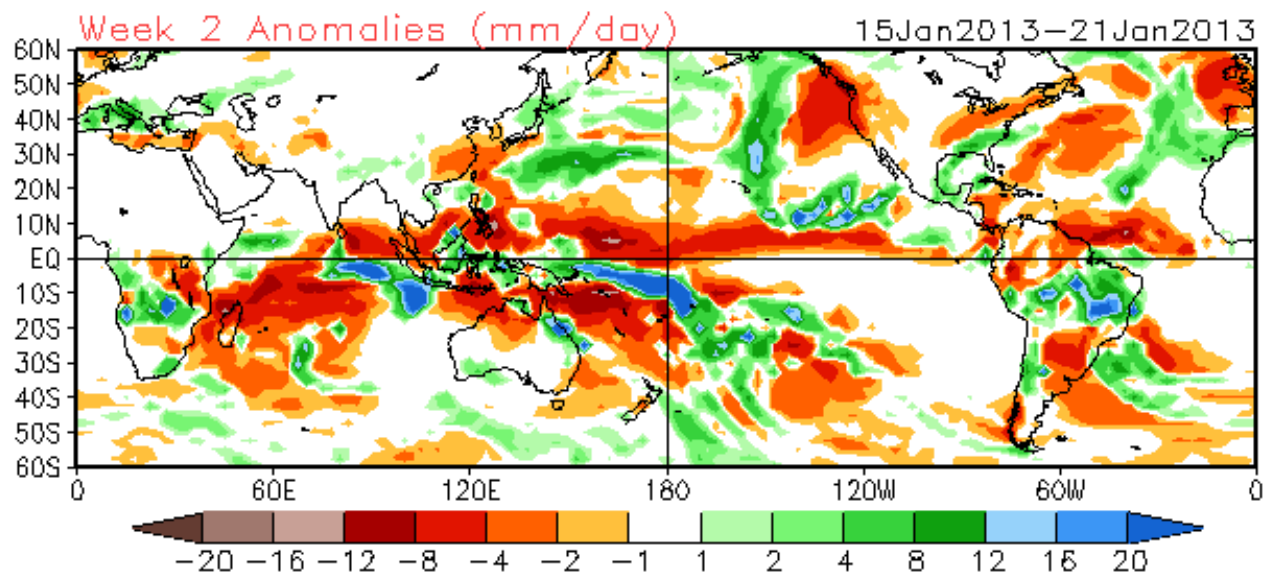
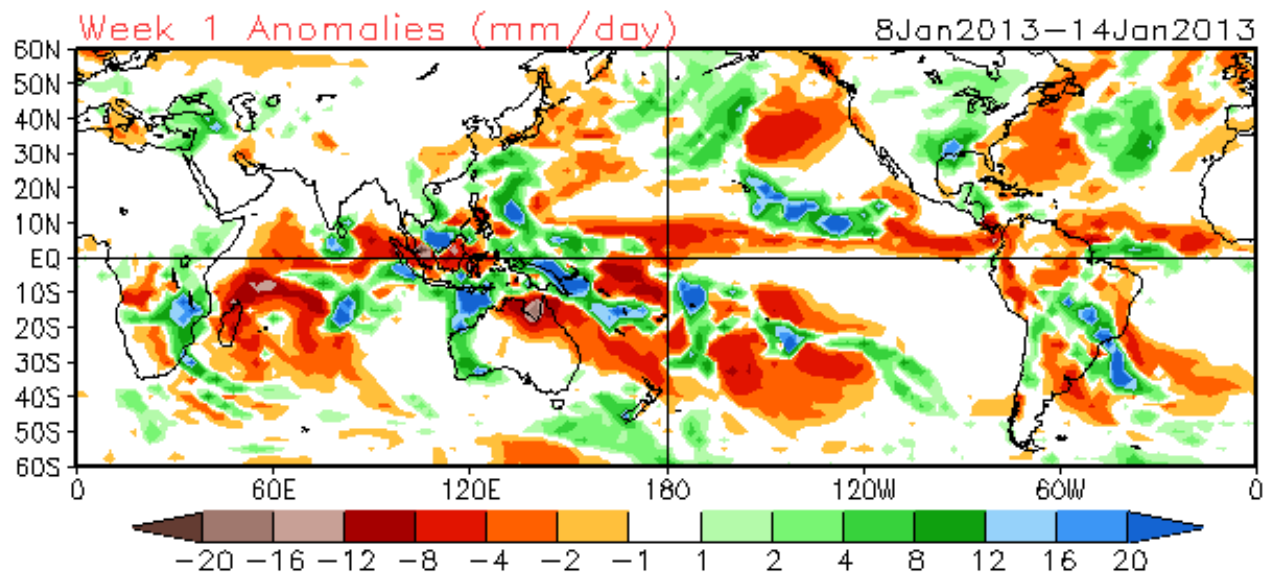


WHMJO Phase 6 u200 Lagged Composite (djf)

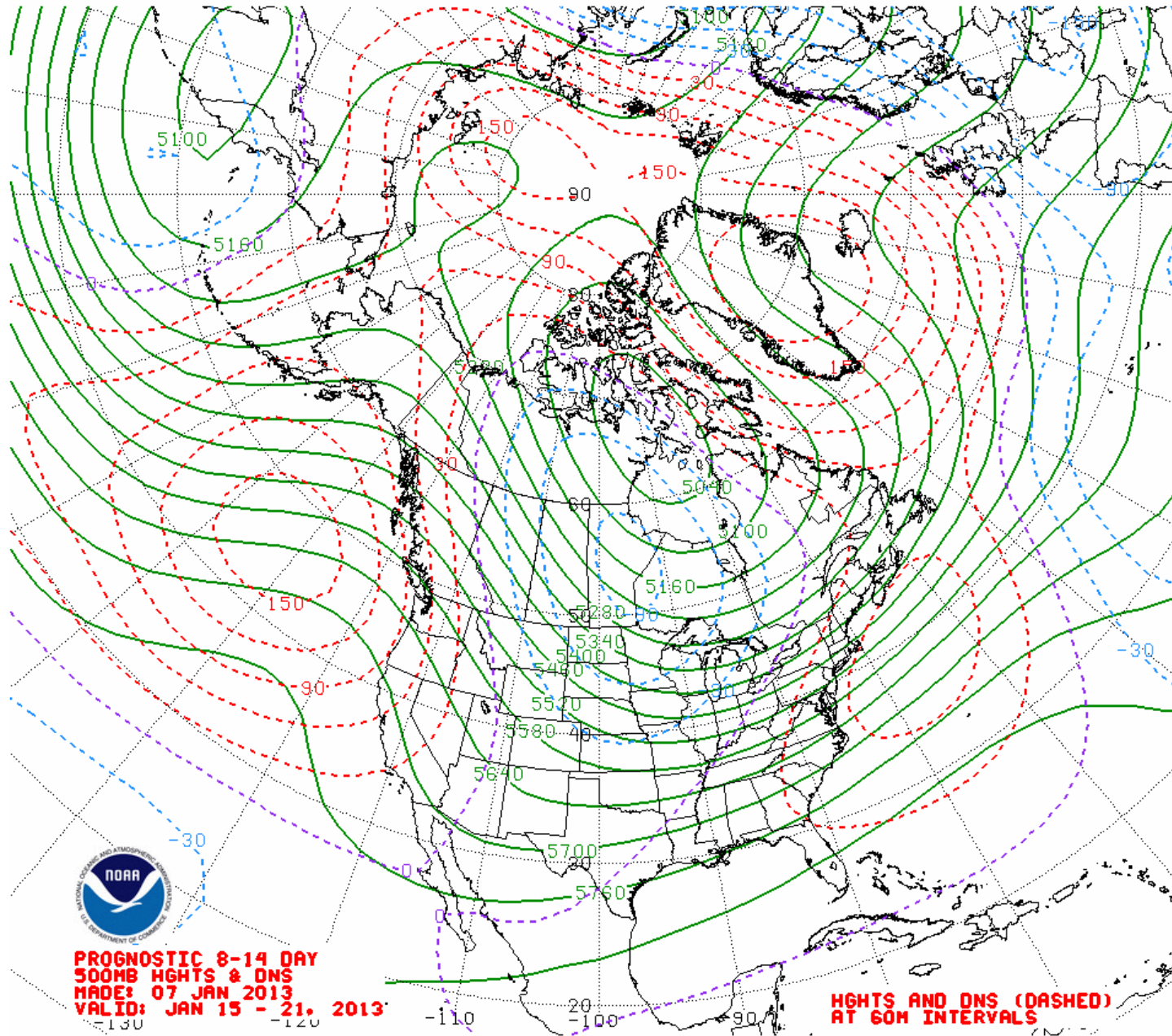


CFSv2 Weeks 1 & 2 Precipitation

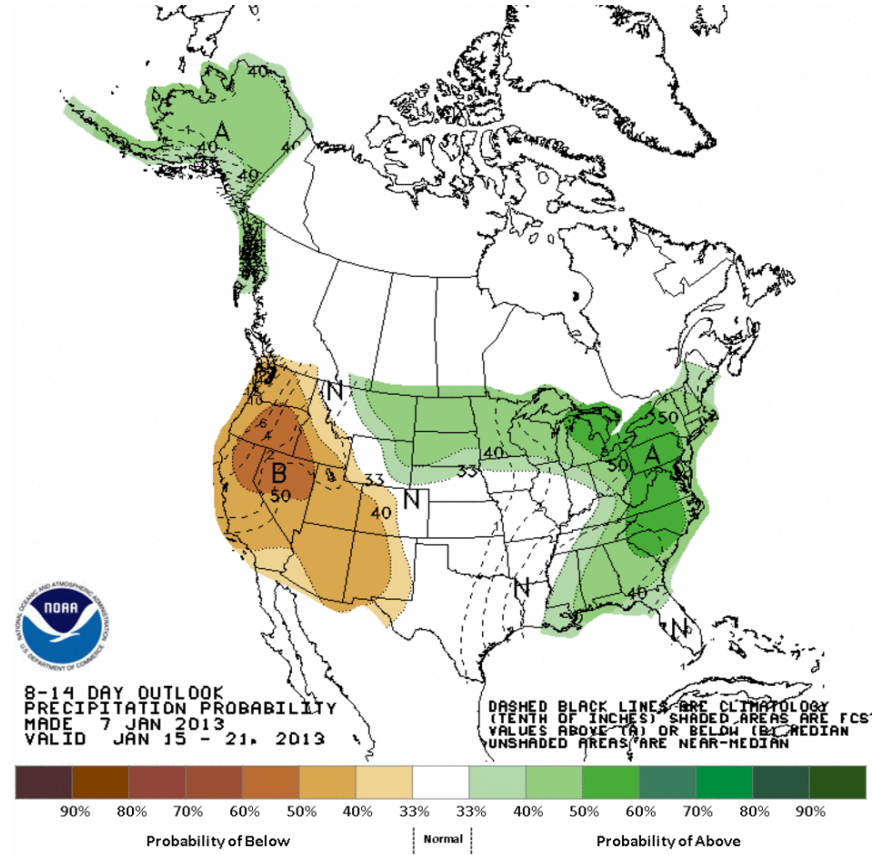
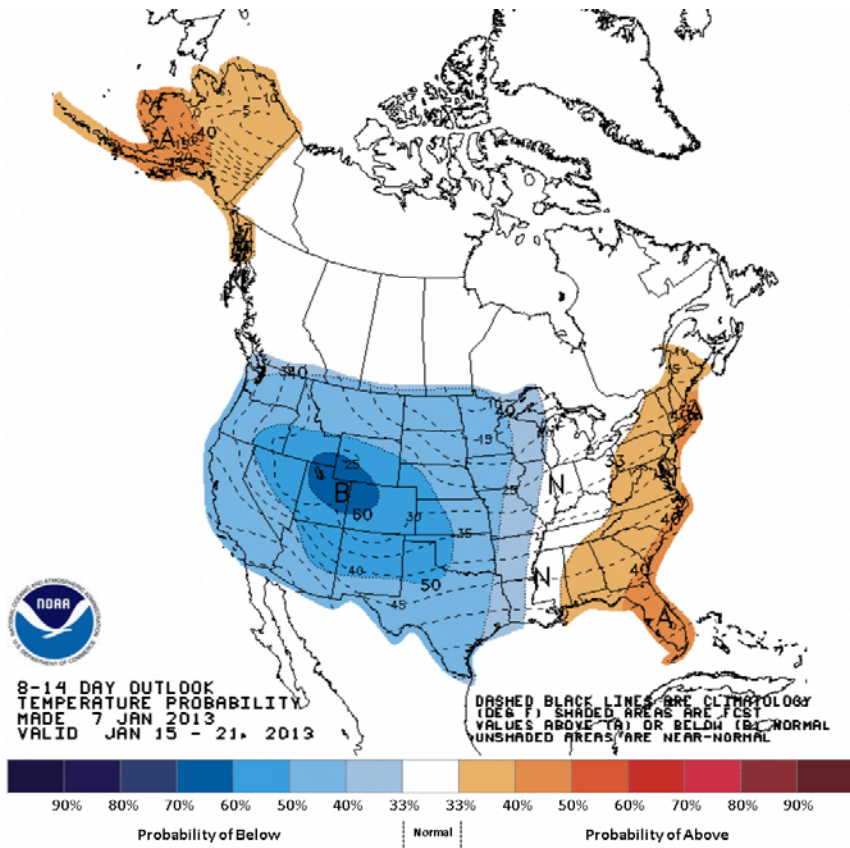
16 Member Ensemble Mean Forecast from 07Jan2013



Week 2 500-hPa Manual Chart



Week 2 – Temperature and Precipitation



Recent AO and PNA Observations and GEFS Forecast

