

Global Tropics Hazards And Benefits Outlook

April 23, 2013

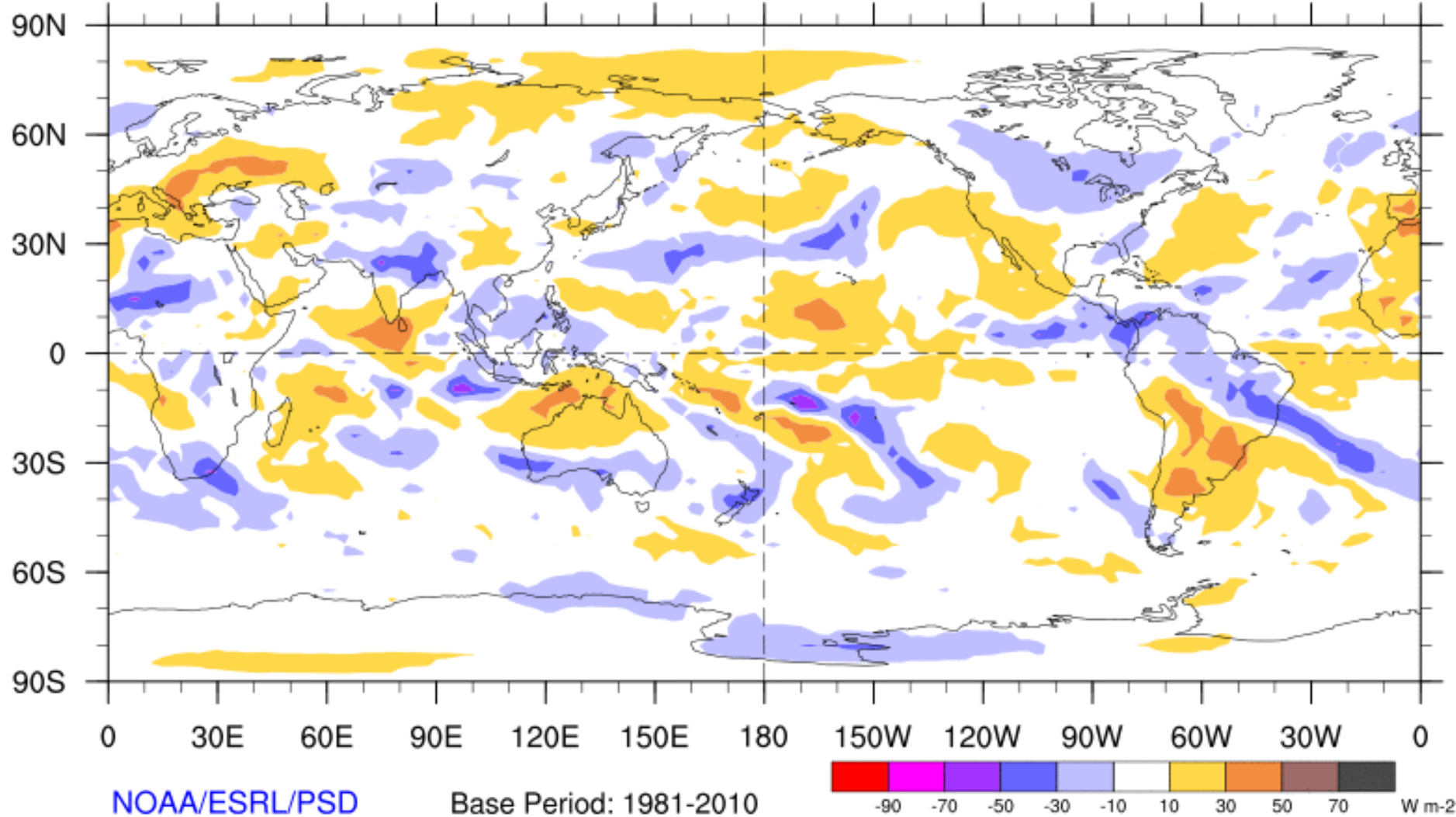
Stephen Baxter

Outline

1. Review of Recent Conditions
2. Synopsis of Climate Modes
3. GTH Outlook and Forecast Discussion

7-Day Average OLR Anomaly

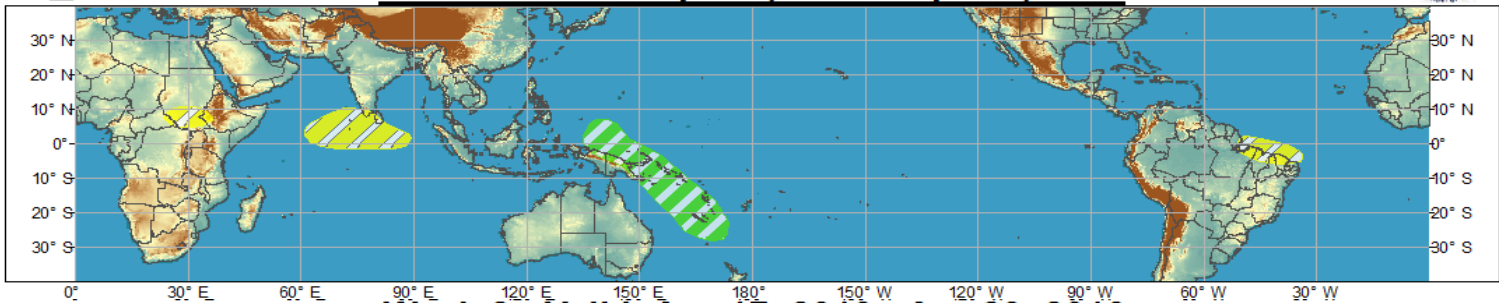
2013/04/15 - 2013/04/21



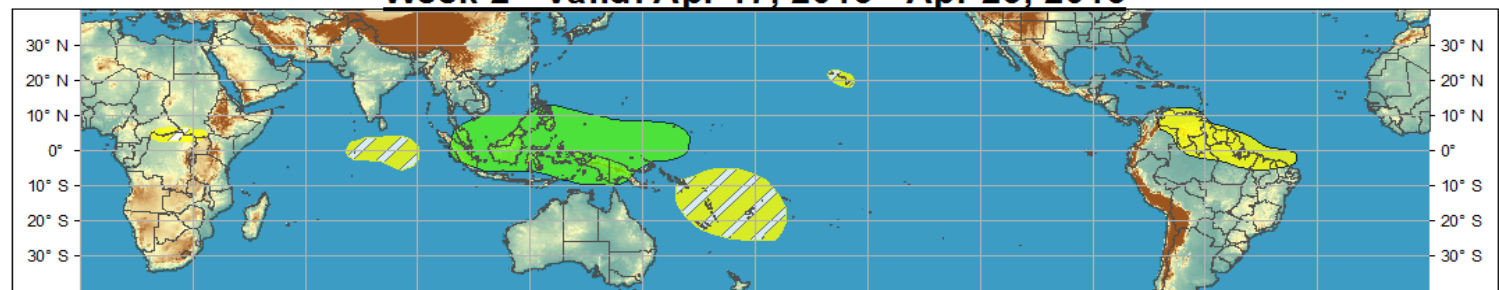
Outlook Review



Week 1 - Valid: Apr 17, 2013 - Apr 23, 2013

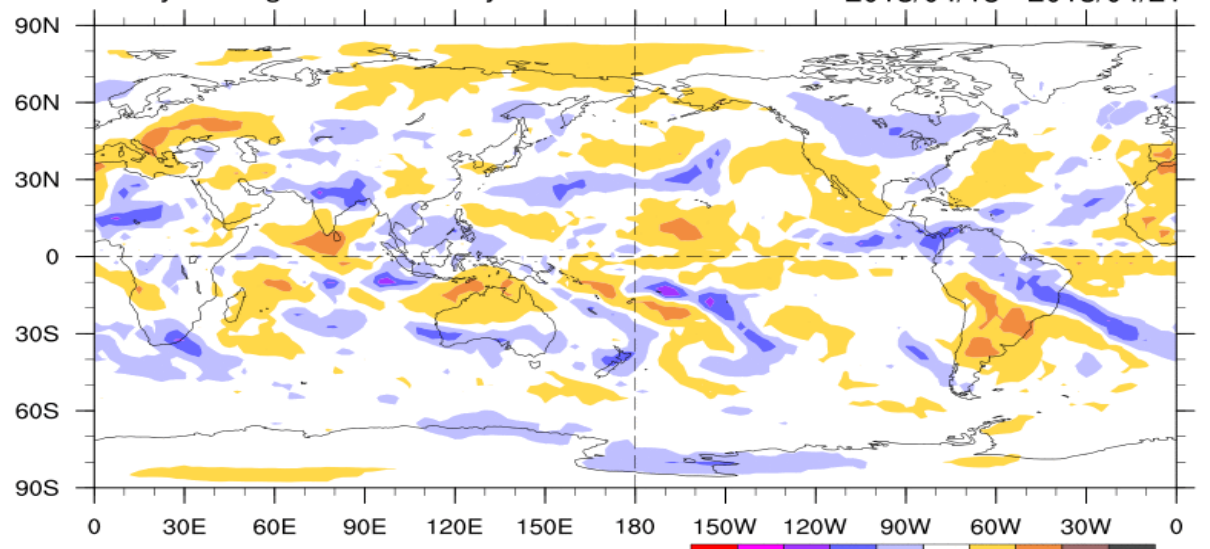


Week 2 - Valid: Apr 17, 2013 - Apr 23, 2013



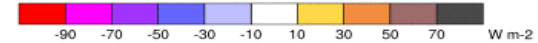
7-Day Average OLR Anomaly

2013/04/15 - 2013/04/21



NOAA/ESRL/PSD

Base Period: 1981-2010



Cool shading
More clouds/rain

Warm shading
Less clouds/rain

Synopsis of Climate Modes

ENSO:

- ENSO-neutral conditions are favored to continue through Northern Hemisphere summer 2013

MJO and other subseasonal tropical variability:

- The MJO remained fairly weak over the past several days, as many observational indicators are less coherent than in previous weeks while other sub-seasonal modes of variability are playing a role in the tropical convection pattern. The velocity potential field is more consistent with MJO activity than other indicators, and suggests a weakly enhanced phase centered between the western Pacific and South America.
- Dynamical model MJO index forecasts generally support weak MJO activity in Week-1, with the MJO signal likely reemerging somewhere in phases 1 or 2 later in Week-2.

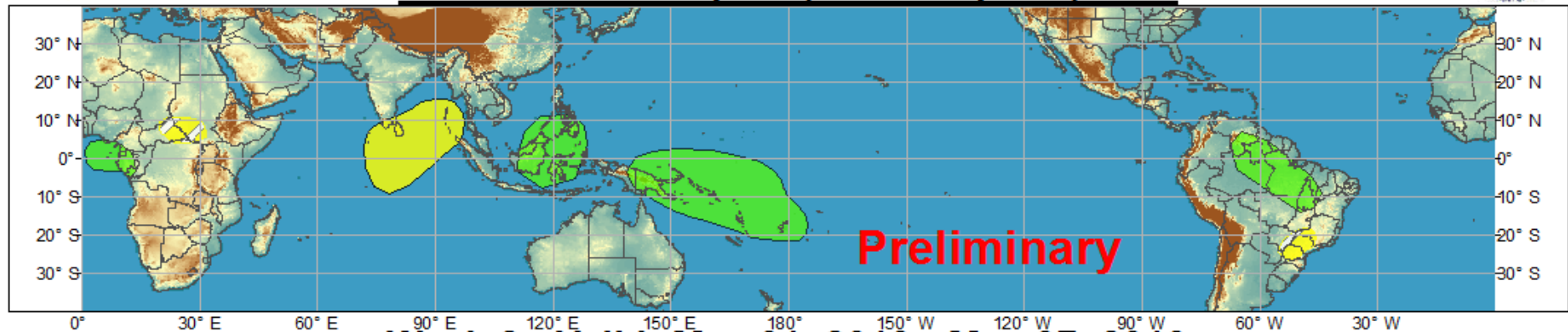
Extratropics:

- Given the weak MJO signal it is difficult to assess the impact on the extratropics. However, the circulation over the Pacific is consistent with the weak MJO between phases 7 and 8. This would tilt the odds towards lower heights across the southeastern CONUS over the next 5-15 days.

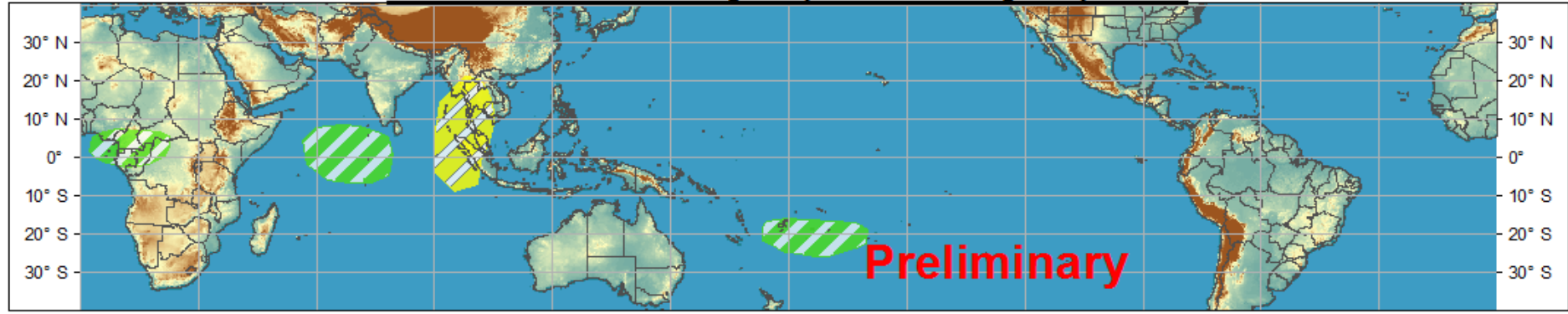


Global Tropics Hazards and Benefits Outlook - Climate Prediction Center

Week 1 - Valid: Apr 24, 2013 - Apr 30, 2013



Week 2 - Valid: May 01, 2013 - May 07, 2013



Produced: 04/23/2013
Forecaster: Baxter

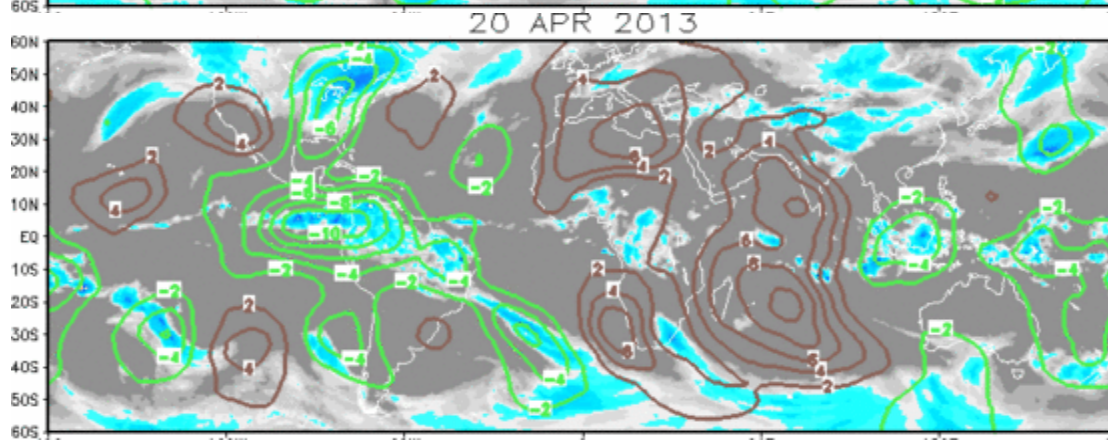
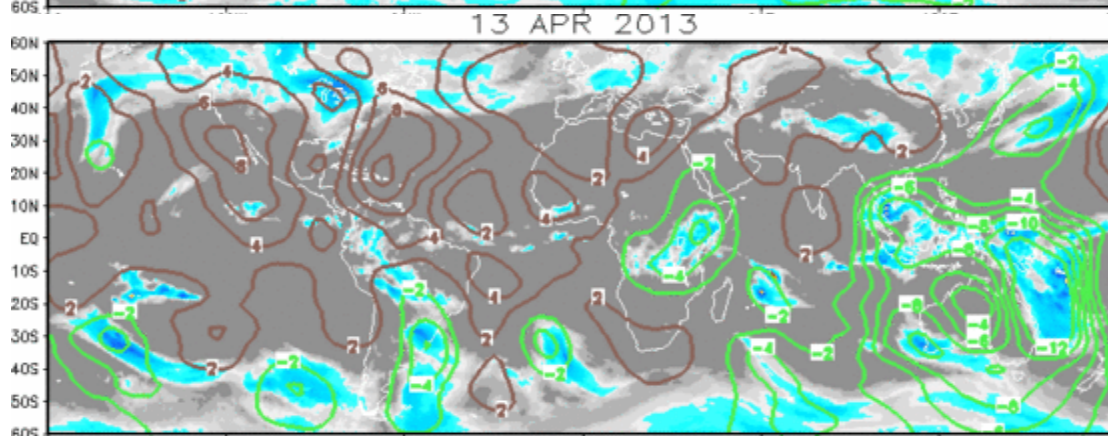
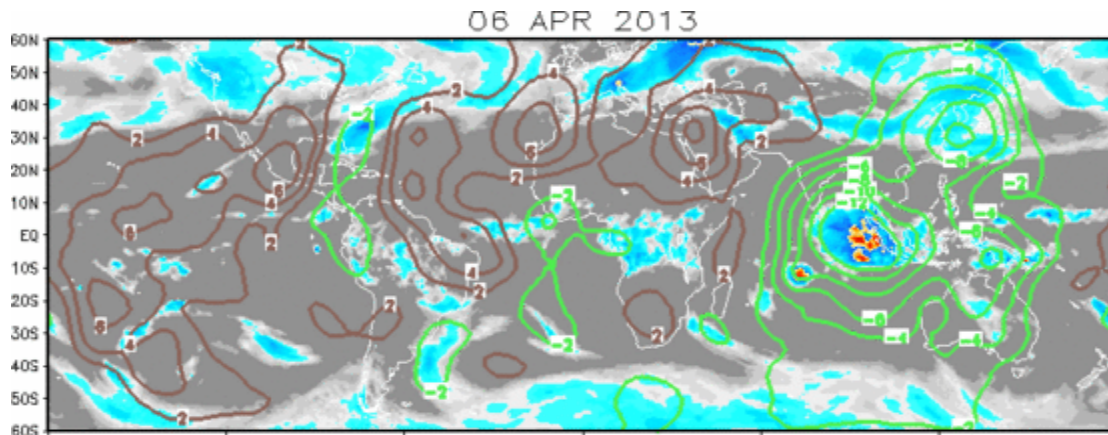
Confidence		
High	Moderate	
Tropical Cyclone Formation		Development of a tropical cyclone that eventually reaches tropical storm/cyclone strength.
Above-average rainfall		Weekly total rainfall in the upper third of the historical range.
Below-average rainfall		Weekly total rainfall in the lower third of the historical range.
Above-normal temperatures		7-day mean temperatures in the upper third of the historical range.
Below-normal temperatures		7-day mean temperatures in the lower third of the historical range.

Product is updated once per week. The product targets broad scale conditions integrated over a 7-day period for US interests only. Consult your local responsible forecast agency.



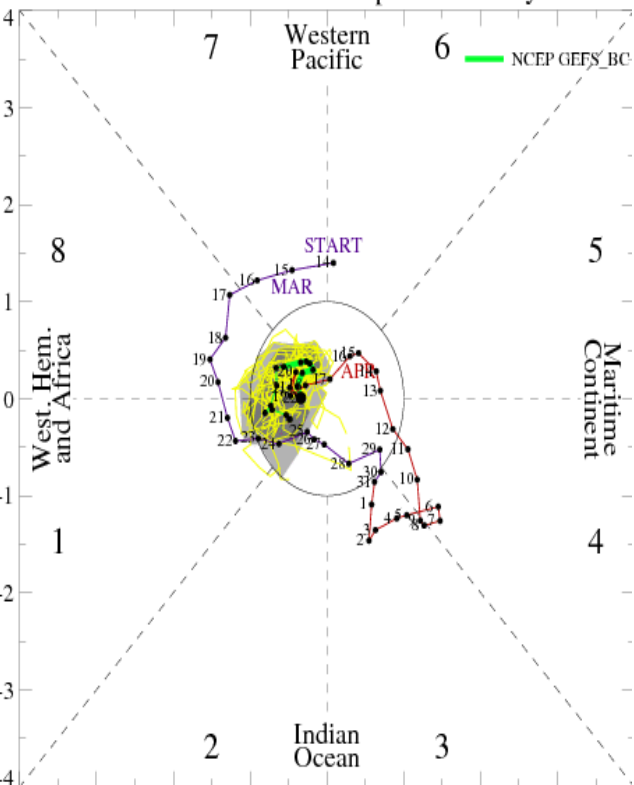
IR Satellite & 200-hpa Velocity Potential Anomalies

Green: Enhanced Divergence Brown: Enhanced Convergence



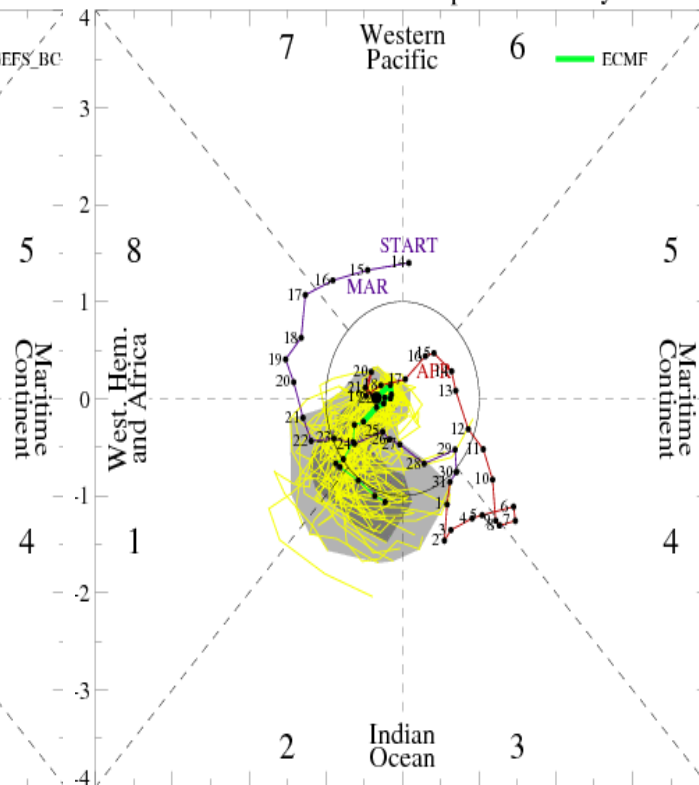
MJO Observation/Forecast

MJO Index Forecast for 23Apr2013-07May2013



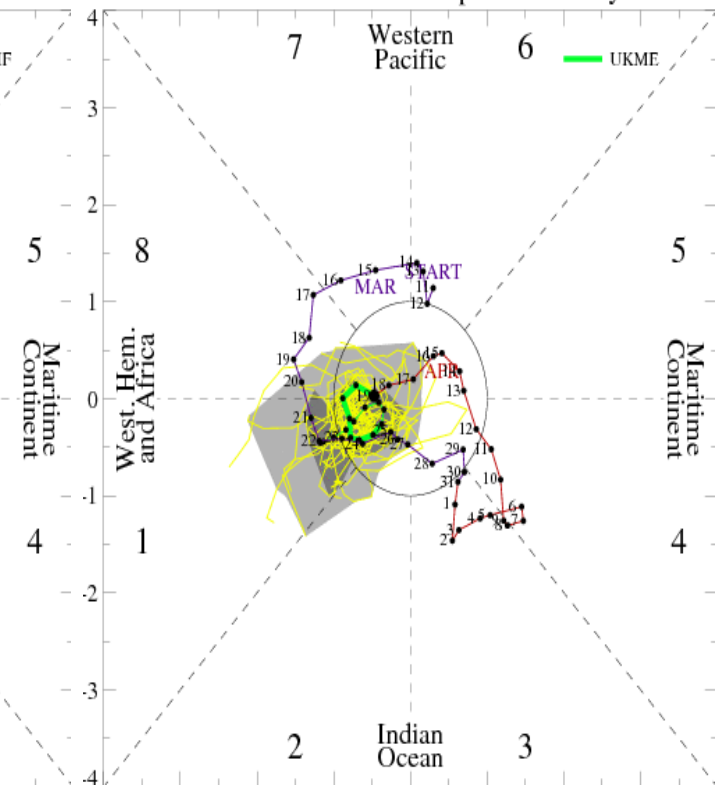
GFS

MJO Index Forecast for 23Apr2013-07May2013



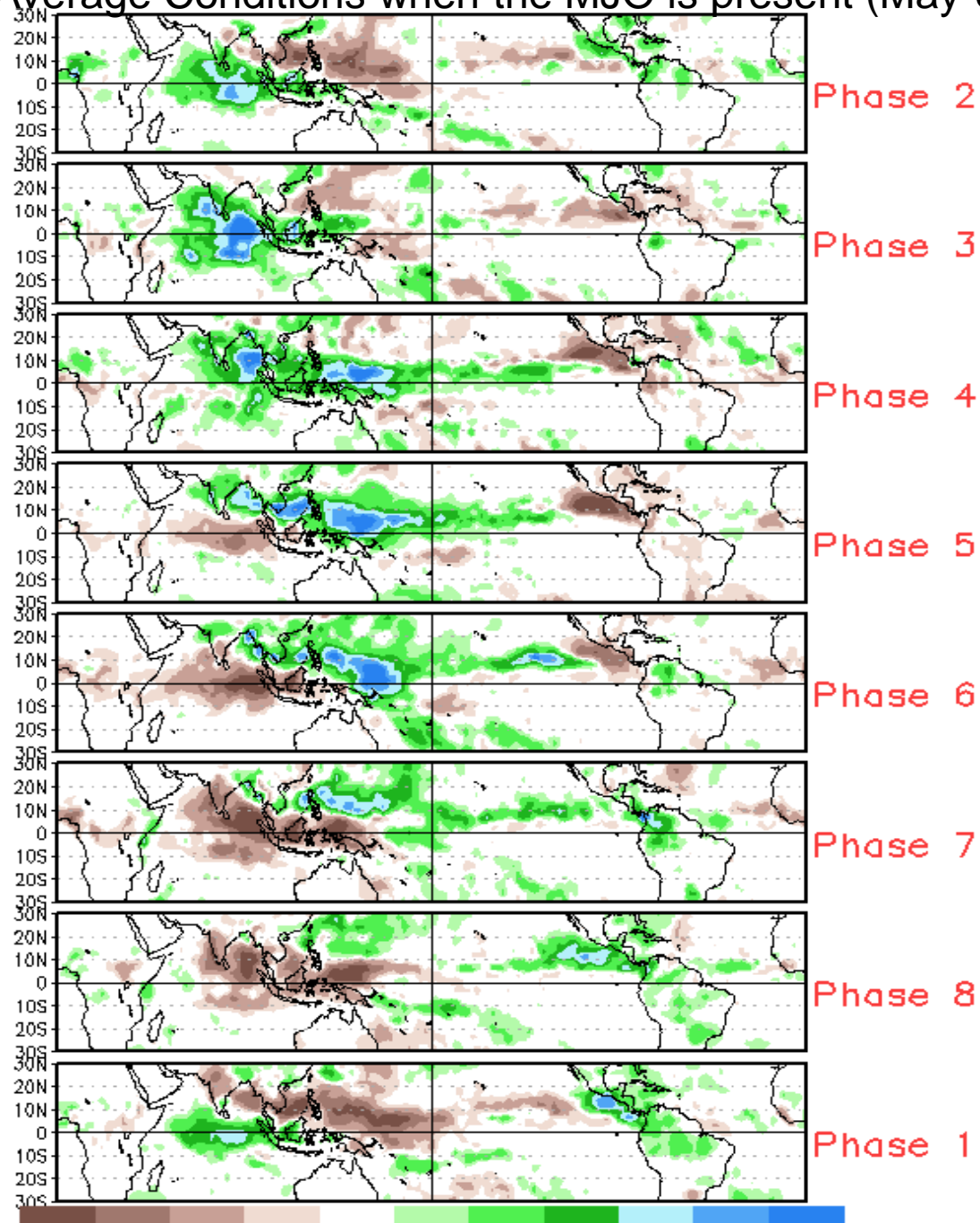
ECMWF

MJO Index Forecast for 20Apr2013-04May2013

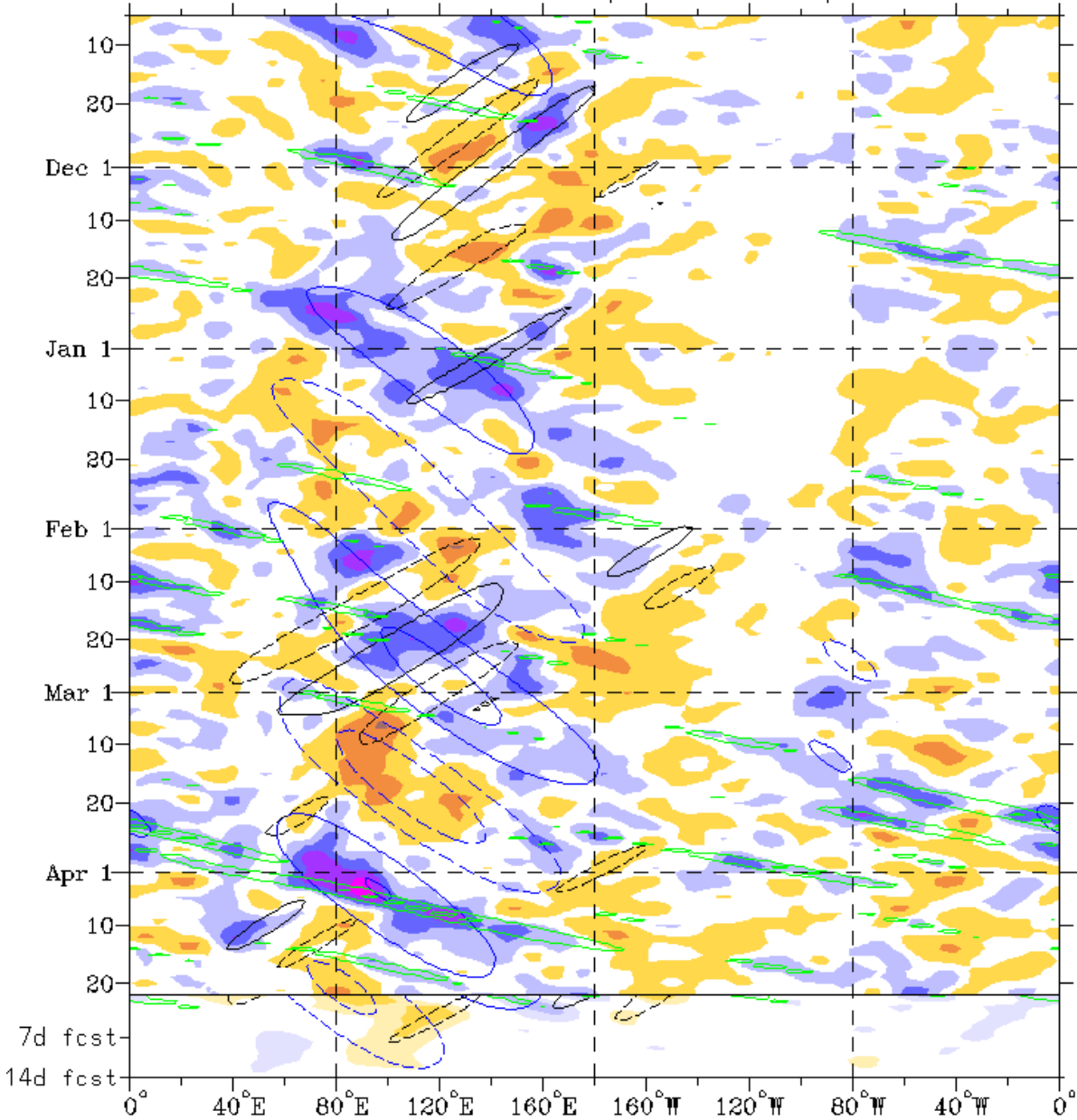


UKMET

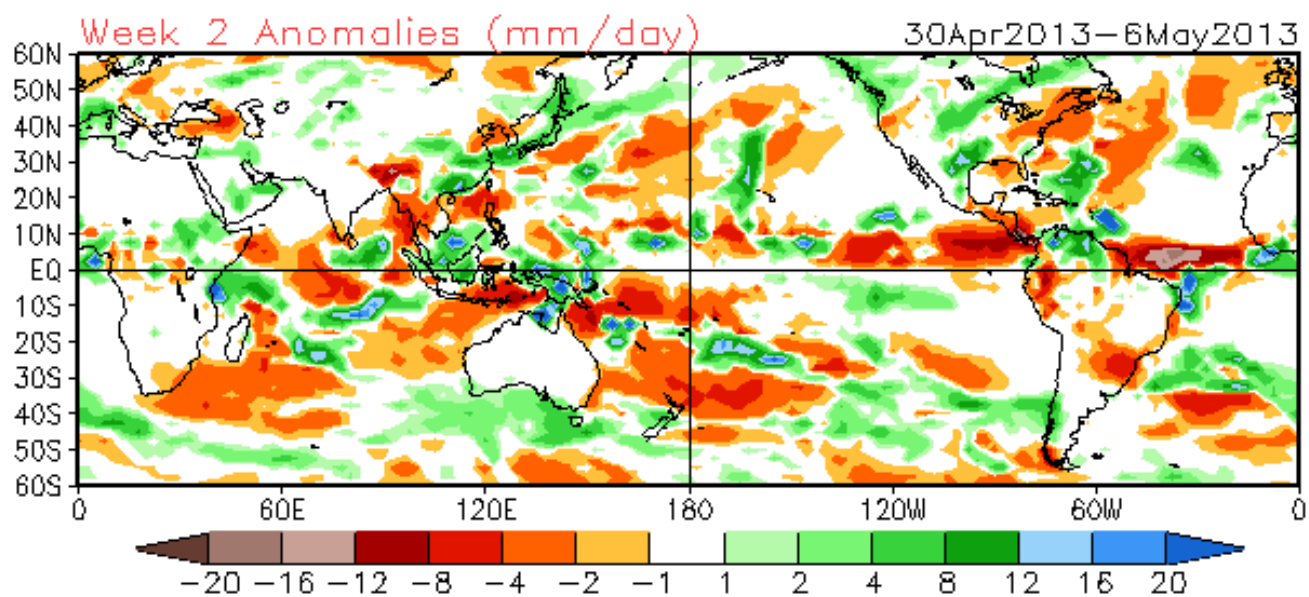
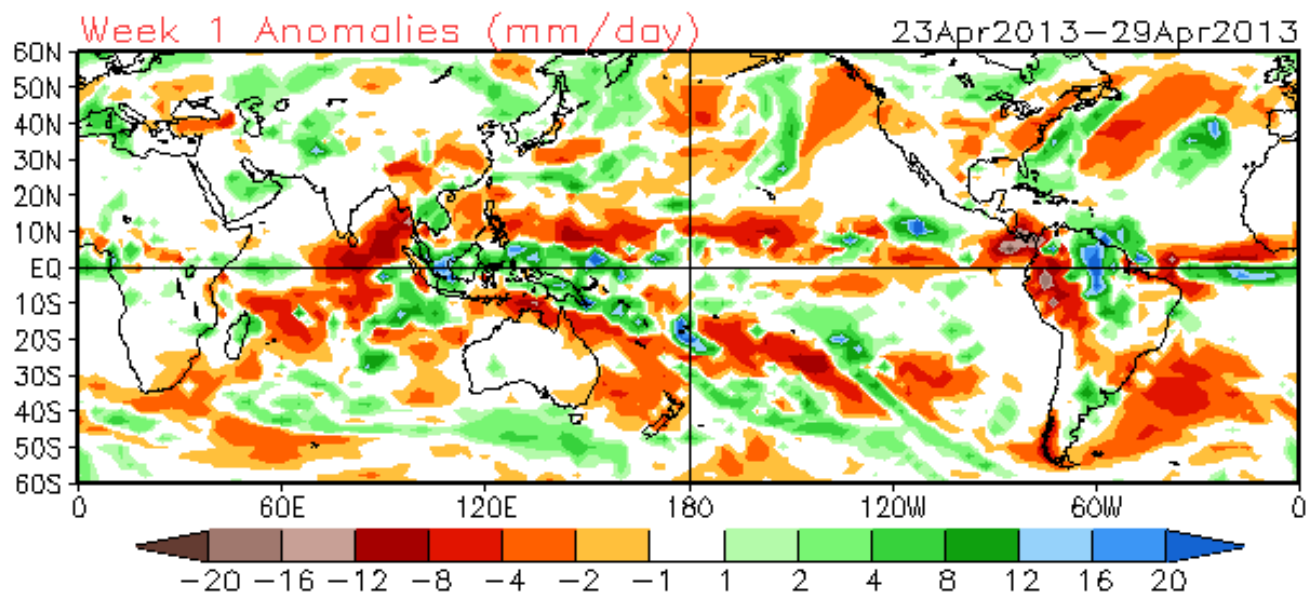
Average Conditions when the MJO is present (May-Sep)



Atmospheric Kelvin waves continue to be important across the western Pacific and parts of South America extending toward Africa.

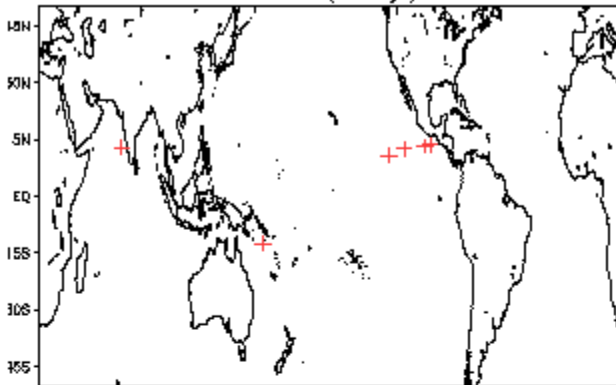


Indications of other modes of variability, including mid-latitude influence near the Date Line.

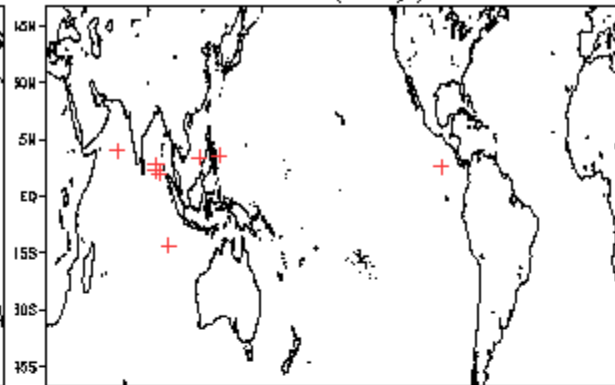


May Tropical Storm Formation by MJO phase

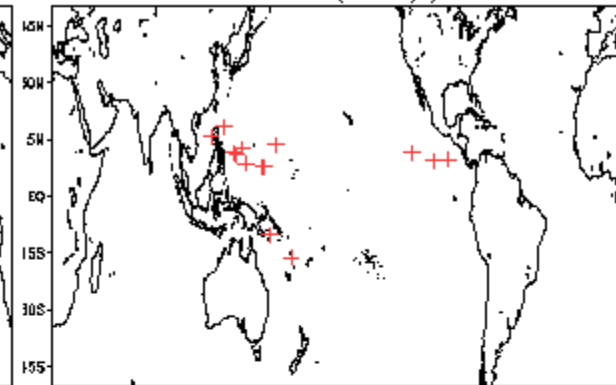
Phase 1 (85 days) 7 storms



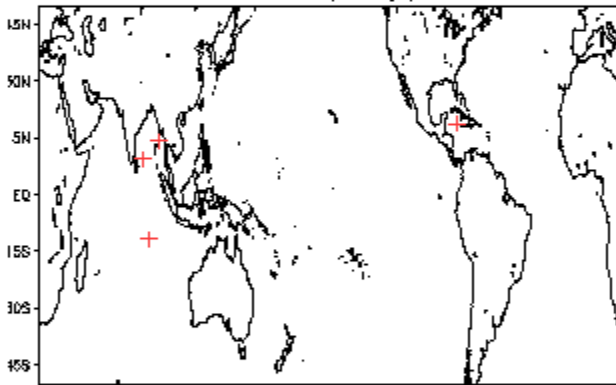
Phase 4 (85 days) 9 storms



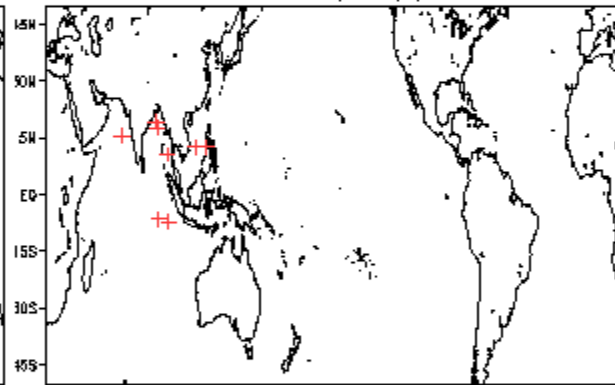
Phase 7 (111 days) 15 storms



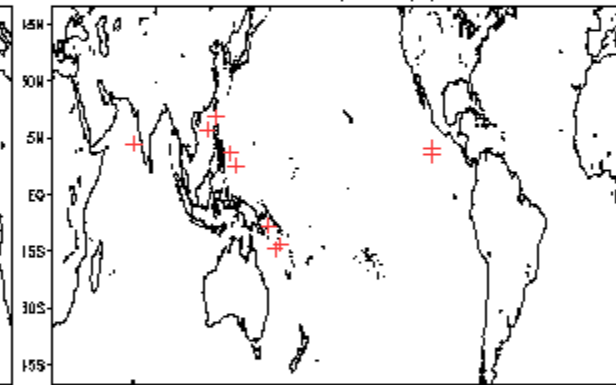
Phase 2 (76 days) 5 storms



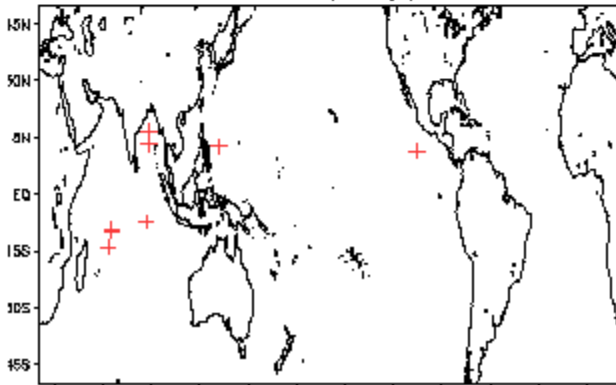
Phase 5 (66 days) 9 storms



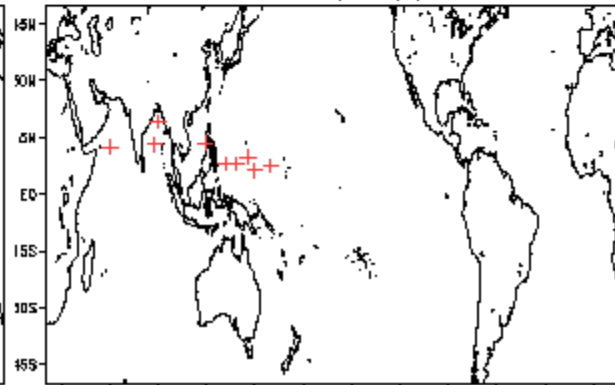
Phase 8 (111 days) 11 storms



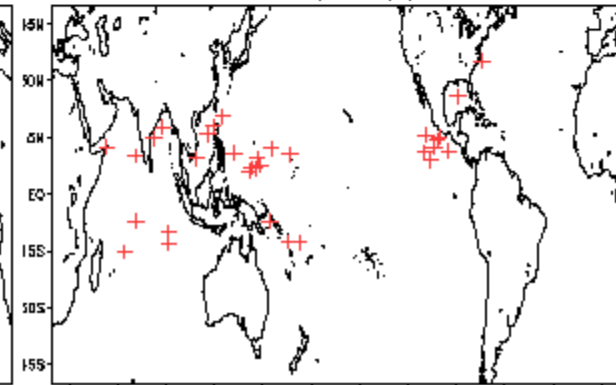
Phase 3 (73 days) 9 storms

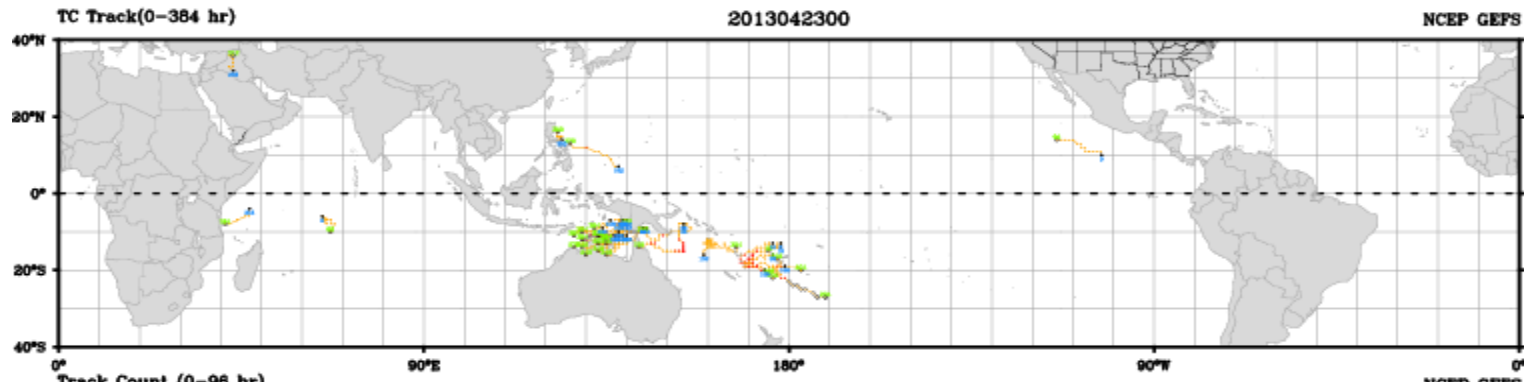


Phase 6 (87 days) 10 storms

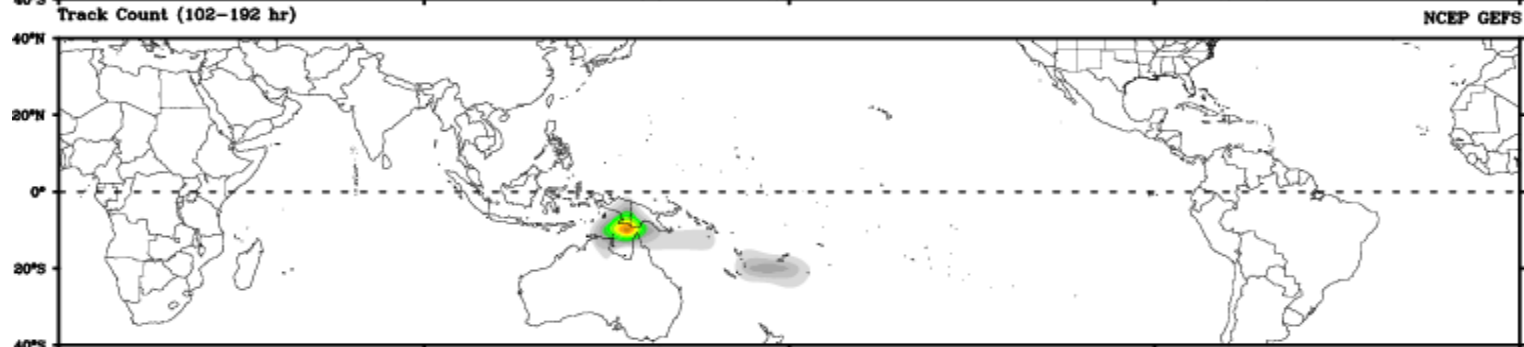
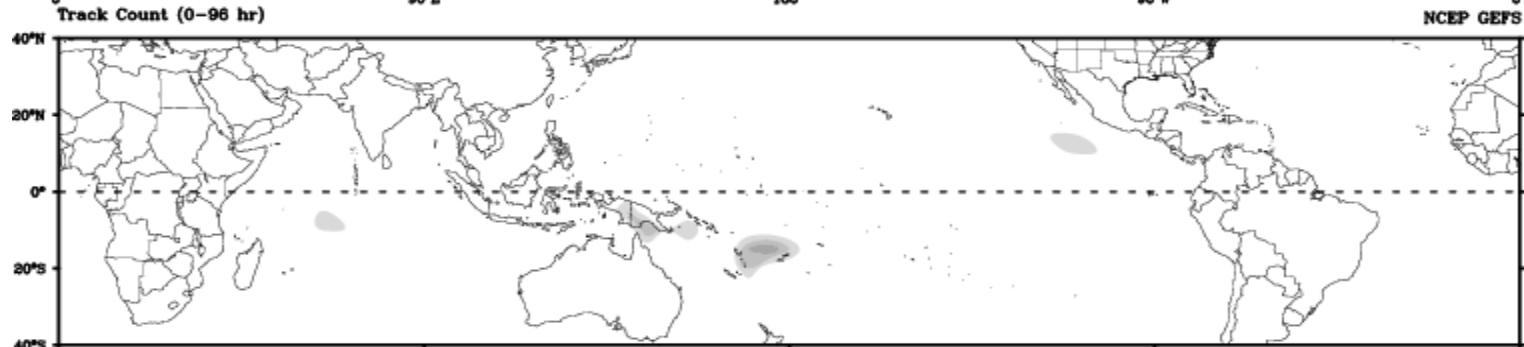


Null (349 days) 33 storms

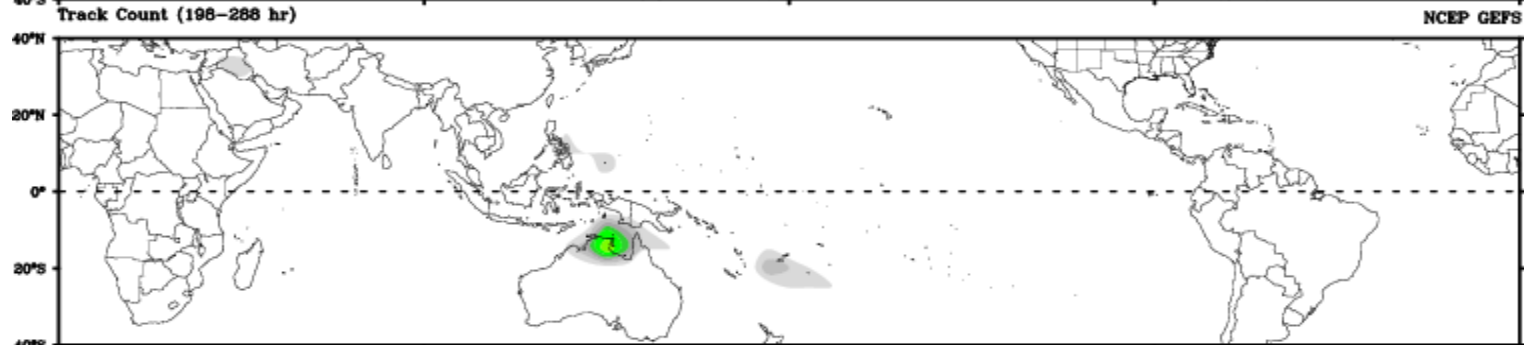




Days 1-4

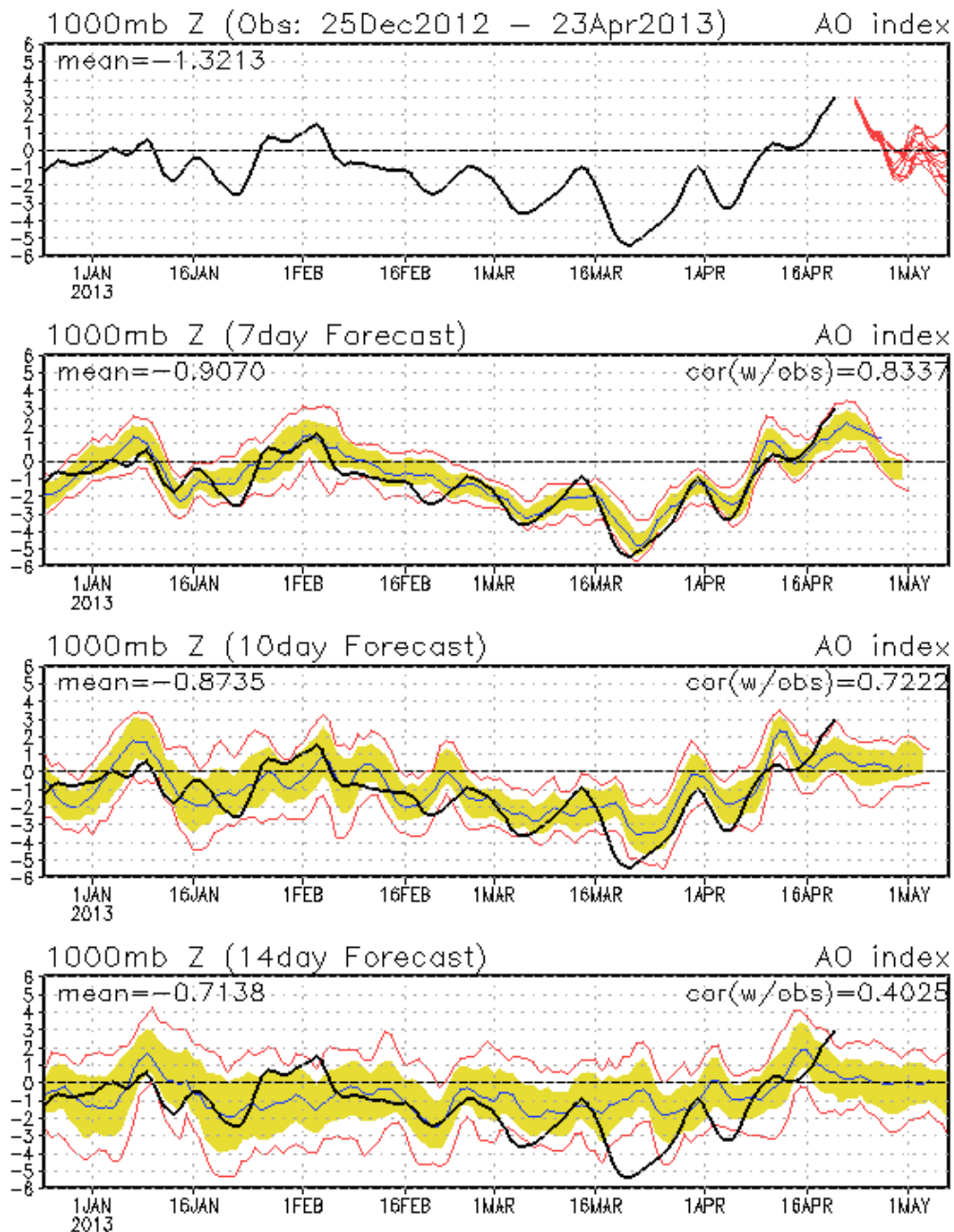


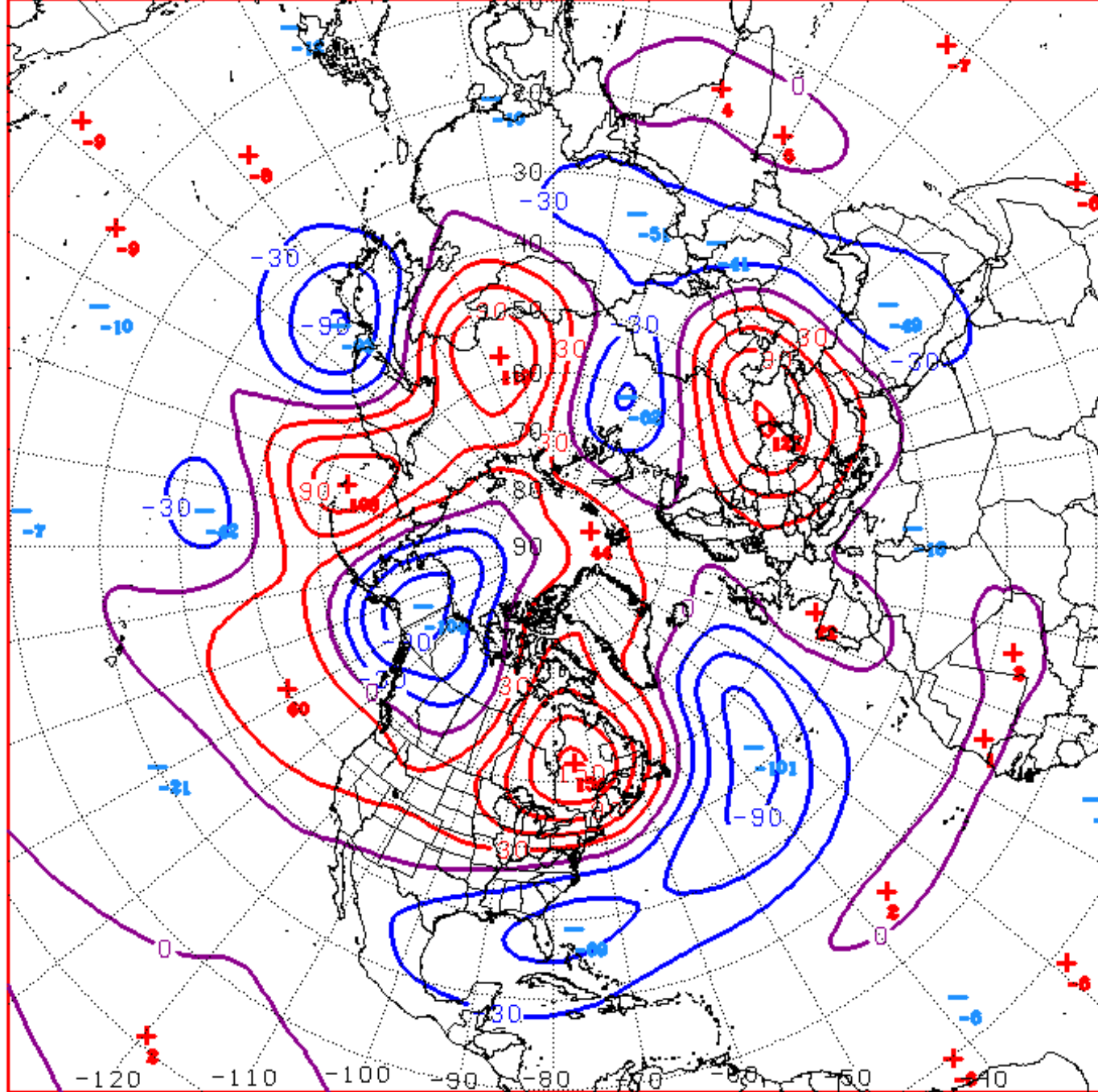
Day 5-8



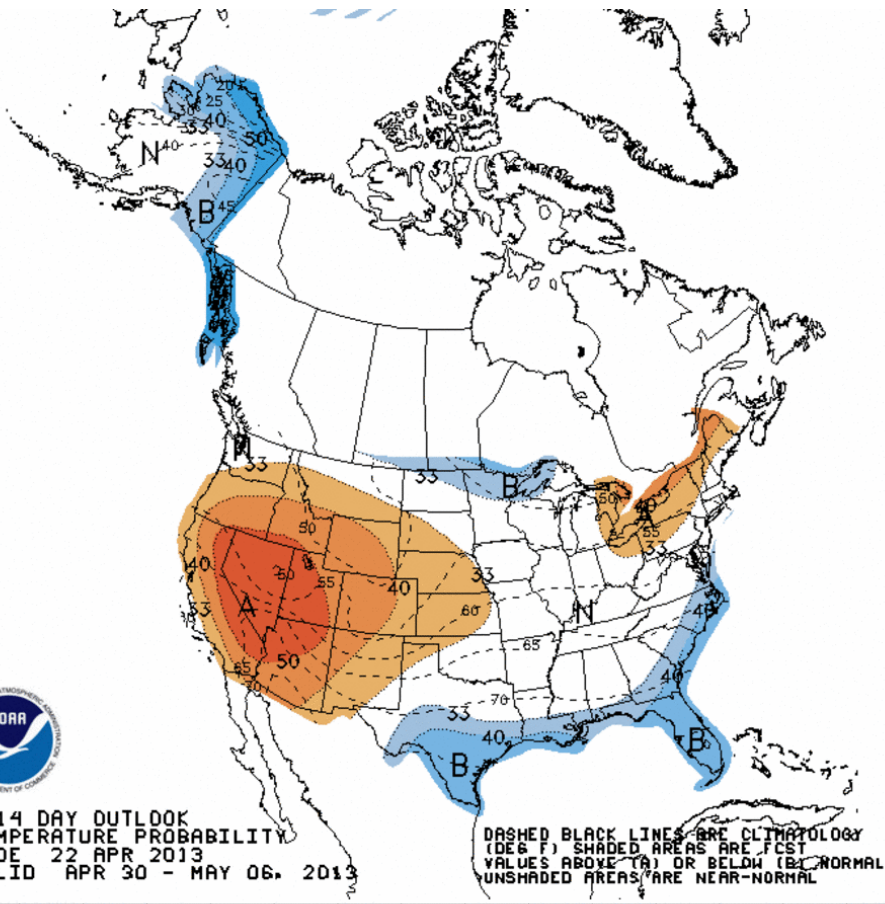
Day 9-12

AO: Observed & ENSM forecasts



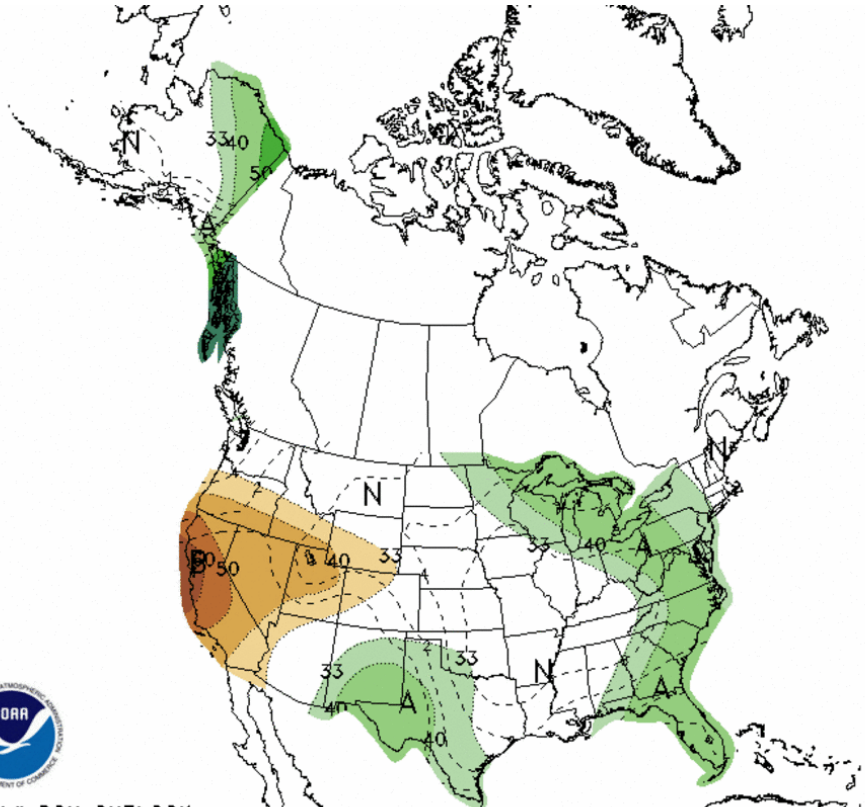
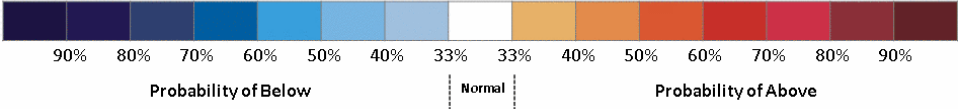


D+11 500 MB ANOMALIES FROM 00Z ECMM
CPC MAP MADE APR 23 2013 1125 UTC CNTD MAY 04 2013



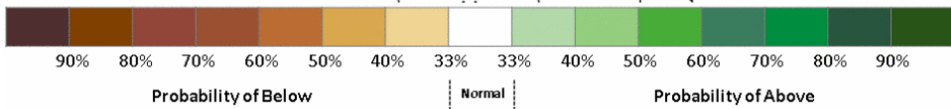
8-14 DAY OUTLOOK
 TEMPERATURE PROBABILITY
 MADE 22 APR 2013
 VALID APR 30 - MAY 06, 2013

DASHED BLACK LINES ARE CLIMATOLOGY
 (DEG F). SHADED AREAS ARE FCST
 VALUES ABOVE (A) OR BELOW (B) NORMAL
 UNSHADED AREAS ARE NEAR-NORMAL



8-14 DAY OUTLOOK
 PRECIPITATION PROBABILITY
 MADE 22 APR 2013
 VALID APR 30 - MAY 06, 2013

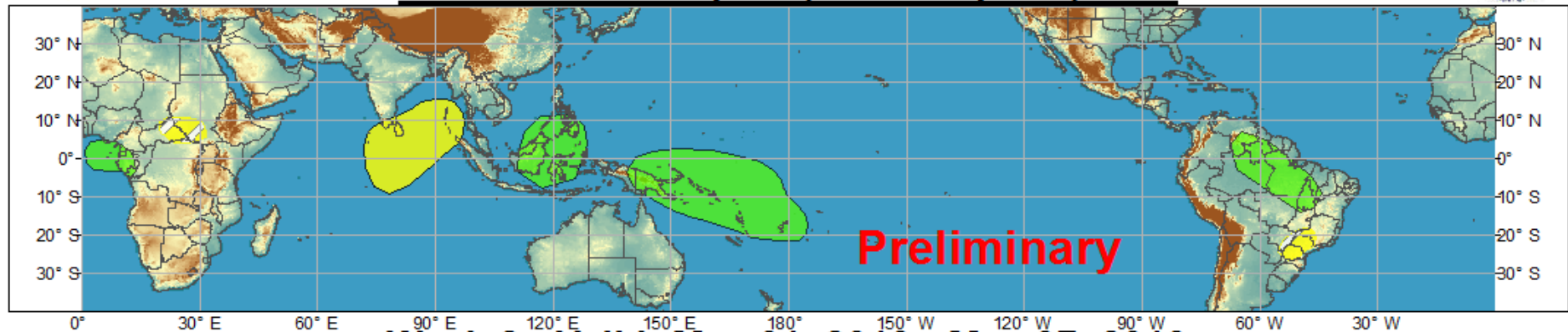
DASHED BLACK LINES ARE CLIMATOLOGY
 (TENTH OF INCHES). SHADED AREAS ARE FCST
 VALUES ABOVE (A) OR BELOW (B) MEDIAN
 UNSHADED AREAS ARE NEAR-MEDIAN



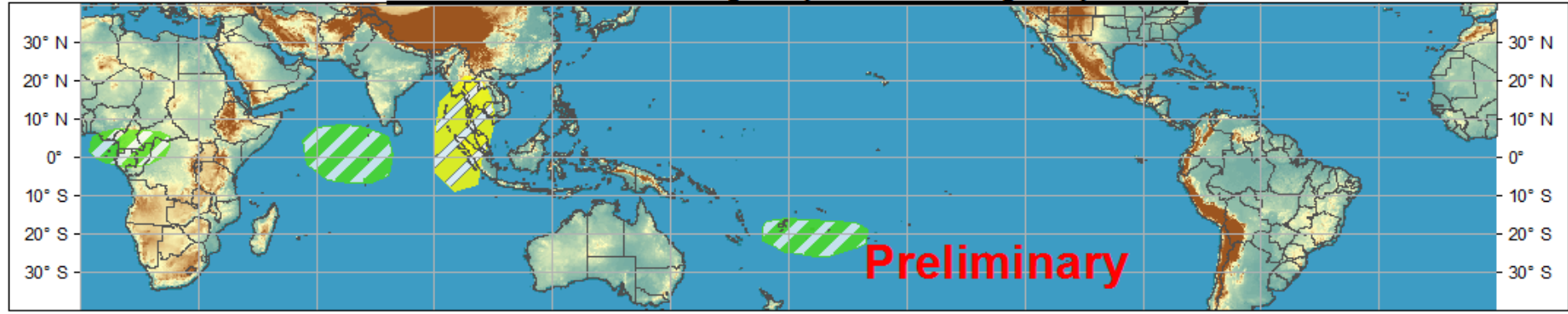


Global Tropics Hazards and Benefits Outlook - Climate Prediction Center

Week 1 - Valid: Apr 24, 2013 - Apr 30, 2013



Week 2 - Valid: May 01, 2013 - May 07, 2013



Produced: 04/23/2013
Forecaster: Baxter

Confidence		
High	Moderate	
		Tropical Cyclone Formation Development of a tropical cyclone that eventually reaches tropical storm/cyclone strength.
		Above-average rainfall Weekly total rainfall in the upper third of the historical range.
		Below-average rainfall Weekly total rainfall in the lower third of the historical range.
		Above-normal temperatures 7-day mean temperatures in the upper third of the historical range.
		Below-normal temperatures 7-day mean temperatures in the lower third of the historical range.

Product is updated once per week. The product targets broad scale conditions integrated over a 7-day period for US interests only. Consult your local responsible forecast agency.

