

Global Tropics Hazards And Benefits Outlook

June 4, 2013

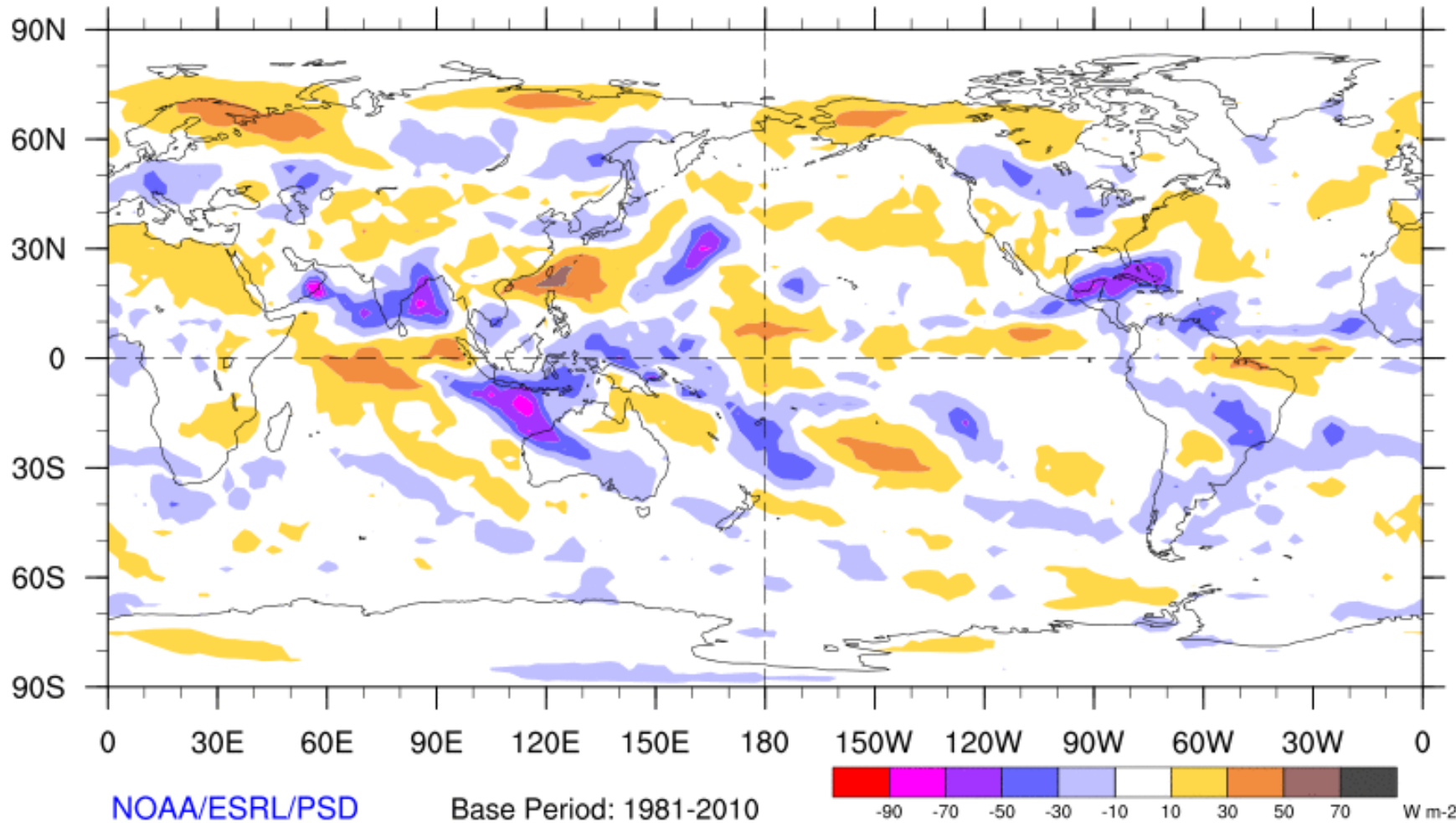
Steve Baxter

Outline

1. Review of Recent Conditions
2. Synopsis of Climate Modes
3. GTH Outlook and Forecast Discussion

7-Day Average OLR Anomaly

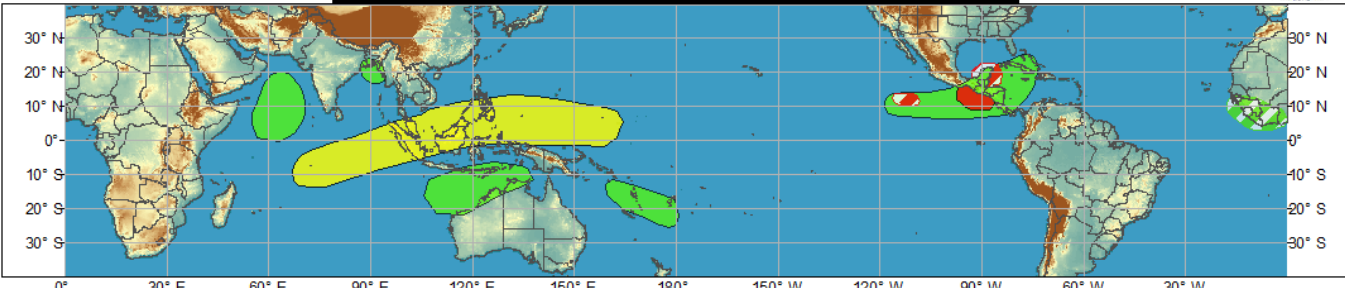
2013/05/27 - 2013/06/02



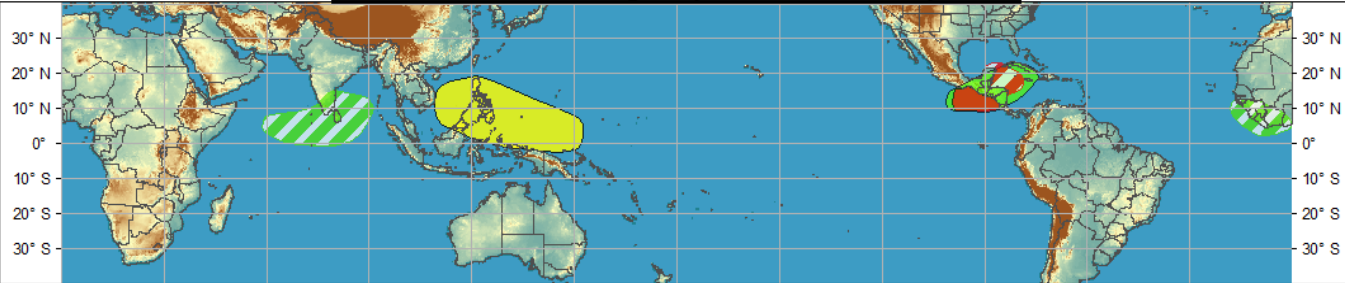
Outlook Review



Week 1 - Valid: May 29, 2013 - Jun 04, 2013

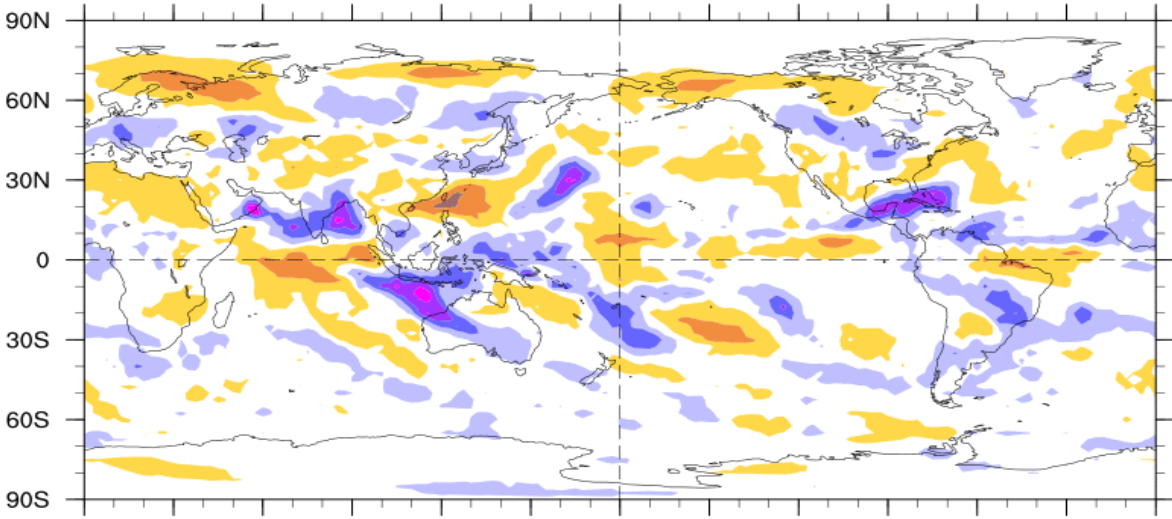


Week 2 - Valid: May 29, 2013 - Jun 04, 2013



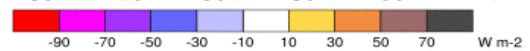
7-Day Average OLR Anomaly

2013/05/27 - 2013/06/02



NOAA/ESRL/PSD

Base Period: 1981-2010



Cool shading
More clouds/rain

Warm shading
Less clouds/rain

Synopsis of Climate Modes

ENSO:

- ENSO-neutral conditions are favored to continue through late boreal summer 2013.

MJO and other subseasonal tropical variability:

- The MJO has remained weak over the past seven to ten days.
- Model MJO index forecasts are split with some models favoring eastward propagation of a low-amplitude MJO signal, while others favor continued weak activity.

Tropics:

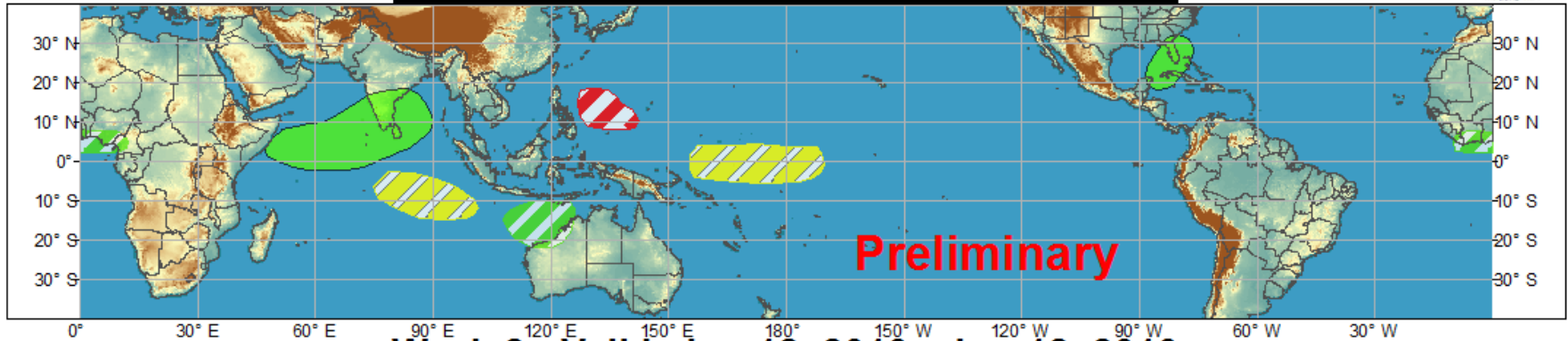
- Elevated odds for TC development east of the Philippines in Week-1.
- Slight chance of TC development in the southern Gulf of Mexico during Week-1.



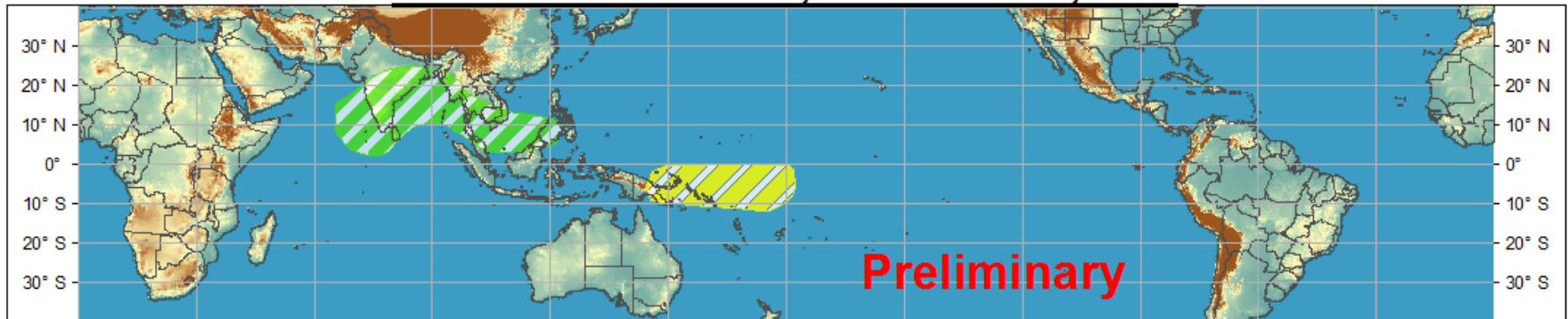
Global Tropics Hazards and Benefits Outlook - Climate Prediction Center



Week 1 - Valid: Jun 05, 2013 - Jun 11, 2013



Week 2 - Valid: Jun 12, 2013 - Jun 18, 2013



Confidence
High Moderate

- | | | |
|-----------------------------------|--|--|
| Tropical Cyclone Formation | | Development of a tropical cyclone that eventually reaches tropical storm/cyclone strength. |
| Above-average rainfall | | Weekly total rainfall in the upper third of the historical range. |
| Below-average rainfall | | Weekly total rainfall in the lower third of the historical range. |
| Above-normal temperatures | | 7-day mean temperatures in the upper third of the historical range. |
| Below-normal temperatures | | 7-day mean temperatures in the lower third of the historical range. |

Produced: 06/04/2013

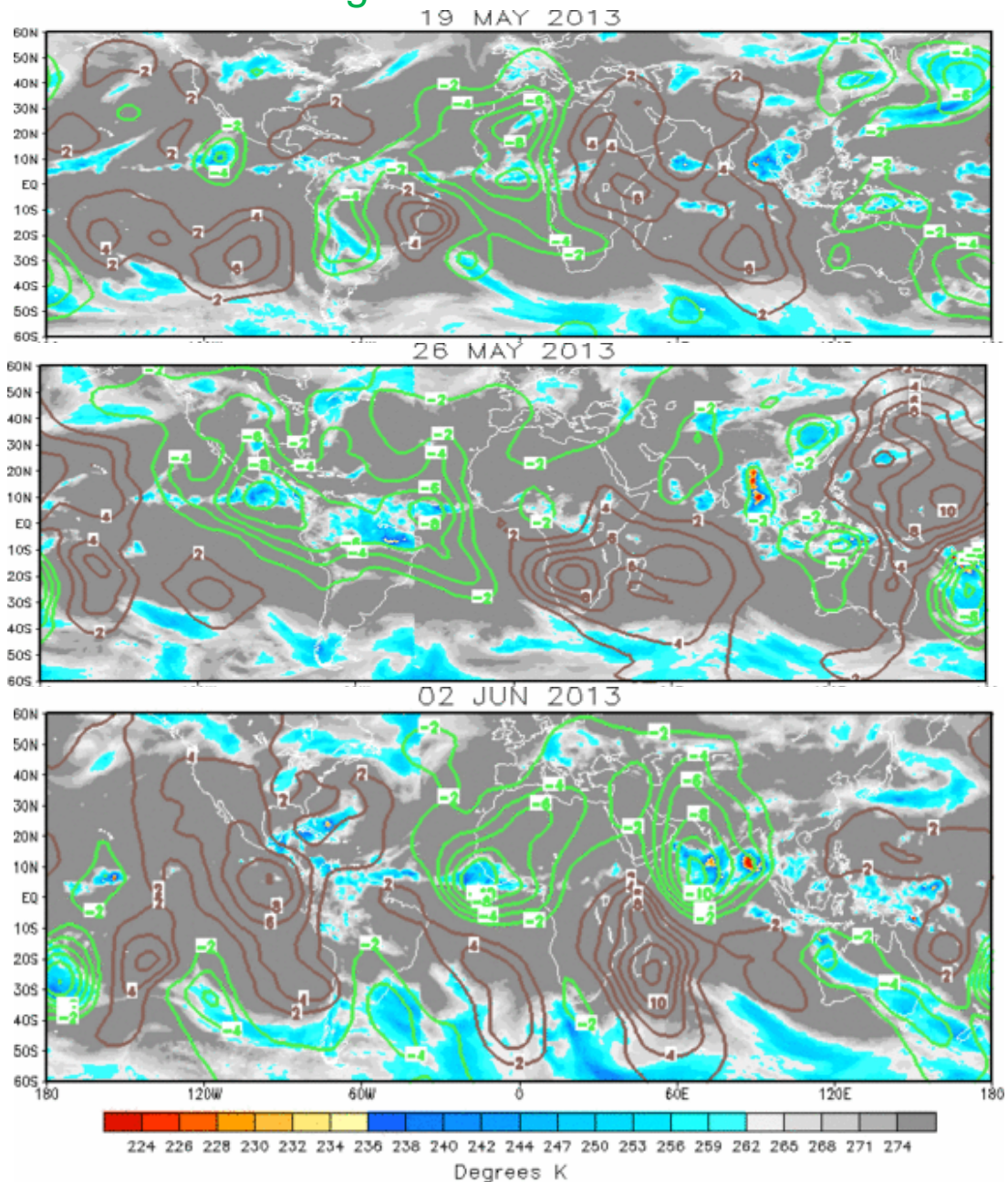
Forecaster: Baxter

Product is updated once per week. The product targets broad scale conditions integrated over a 7-day period for US interests only. Consult your local responsible forecast agency.

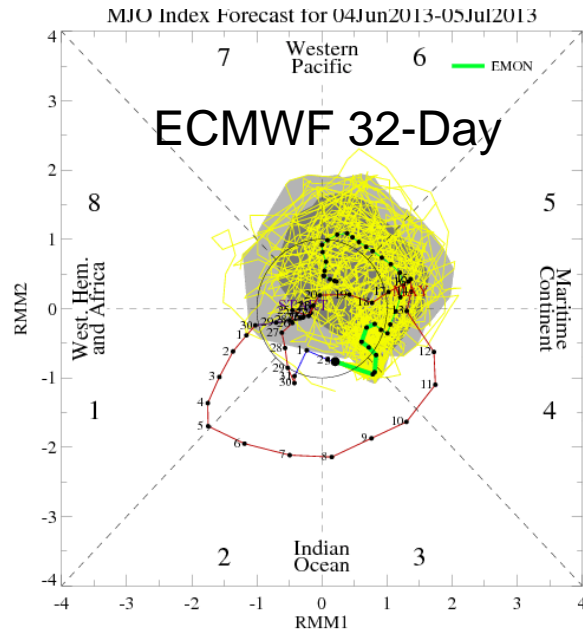
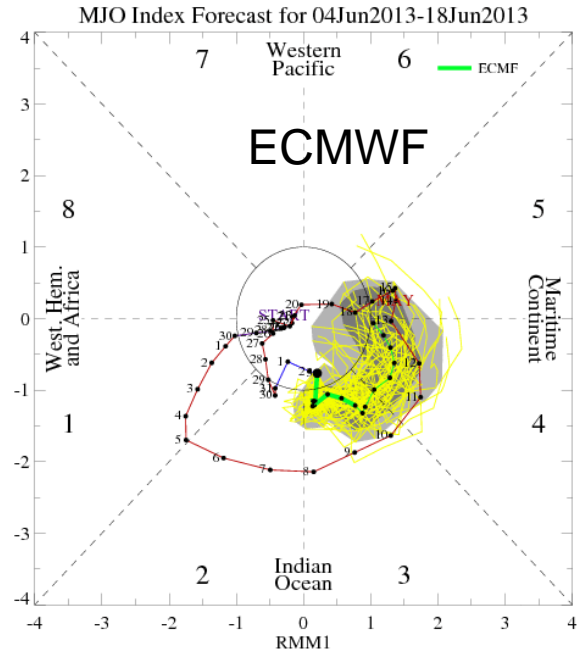
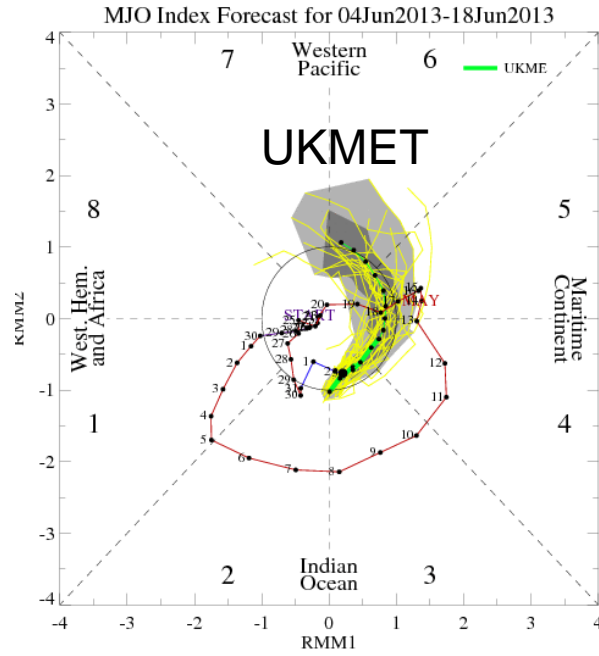
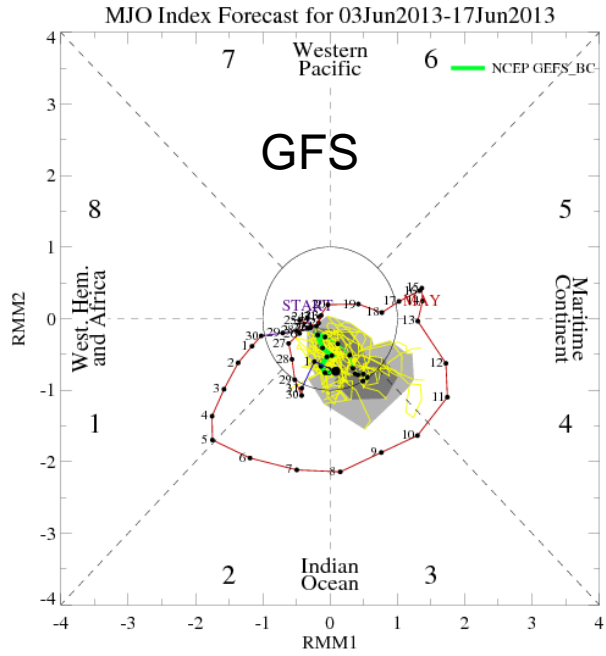


IR Satellite & 200-hpa Velocity Potential Anomalies

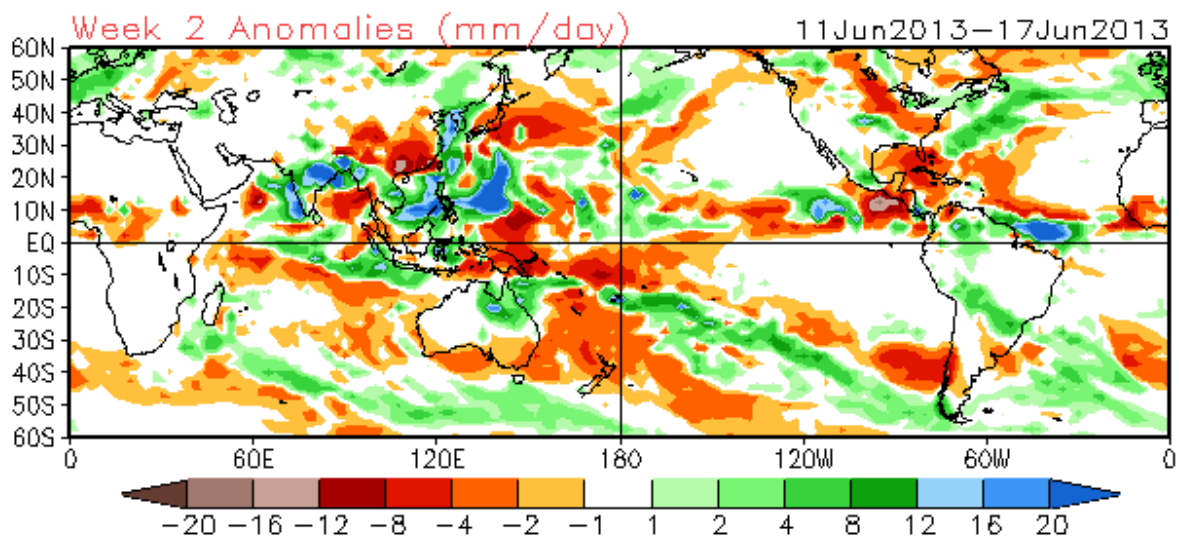
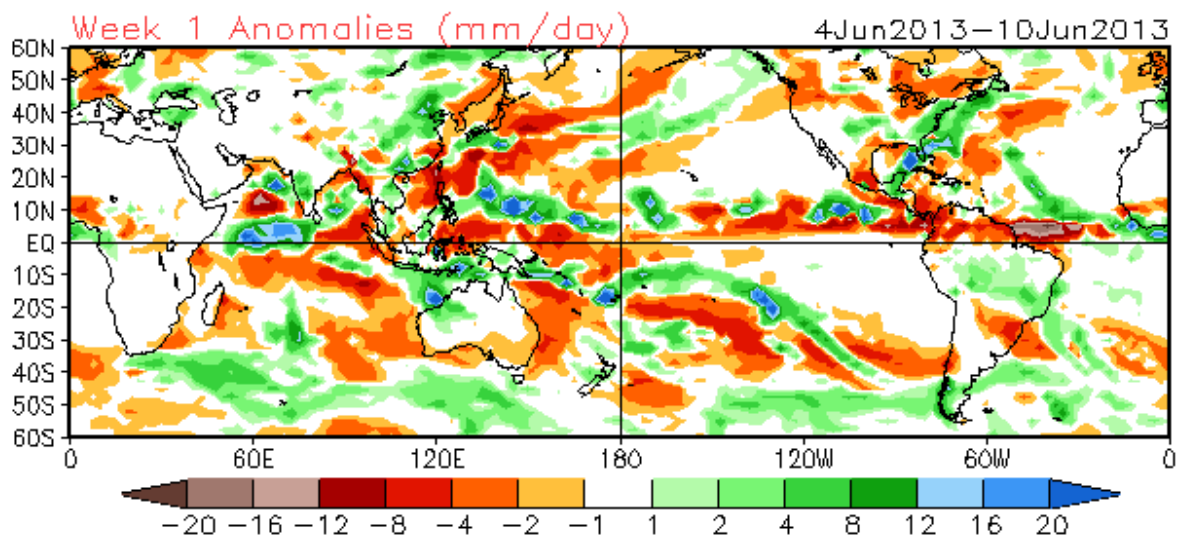
Green: Enhanced Divergence Brown: Enhanced Convergence



MJO Observation/Forecast

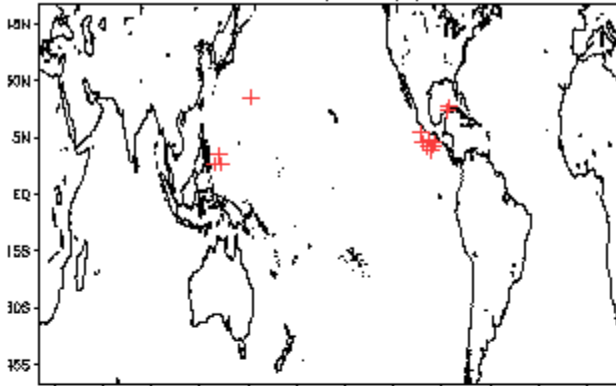


CFSv2 Weeks 1 & 2 Precipitation
16 Member Ensemble Mean Forecast from 03Jun2013

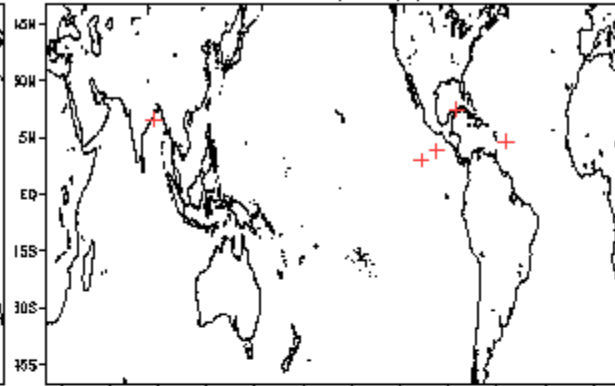


June Tropical Storm Formation by MJO phase

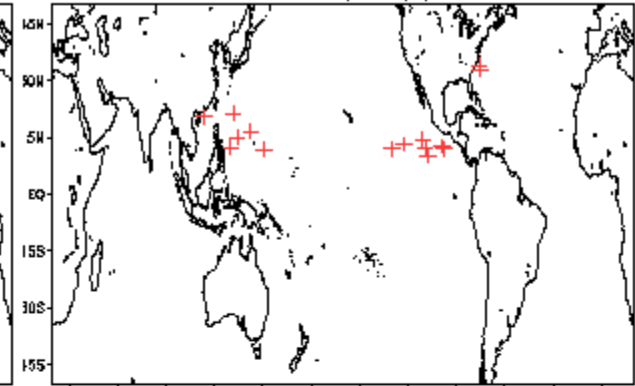
Phase 1 (104 days) 14 storms



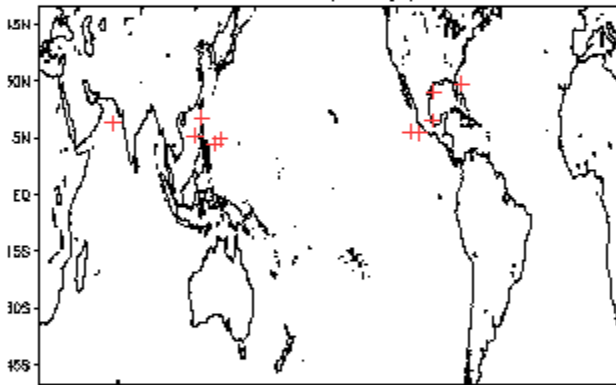
Phase 4 (80 days) 6 storms



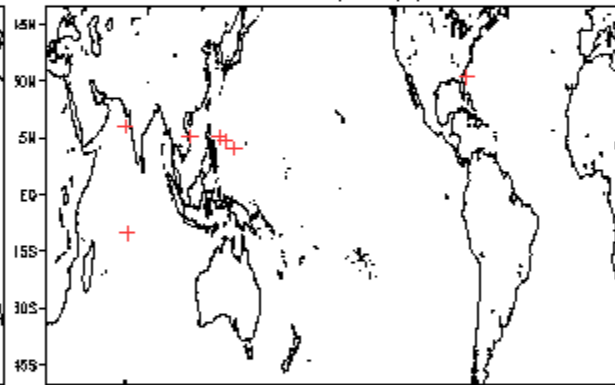
Phase 7 (45 days) 16 storms



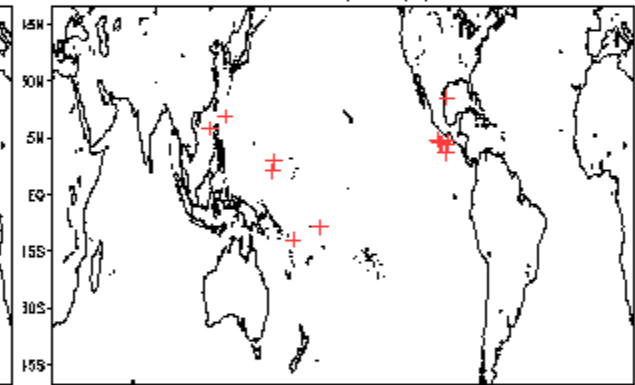
Phase 2 (82 days) 11 storms



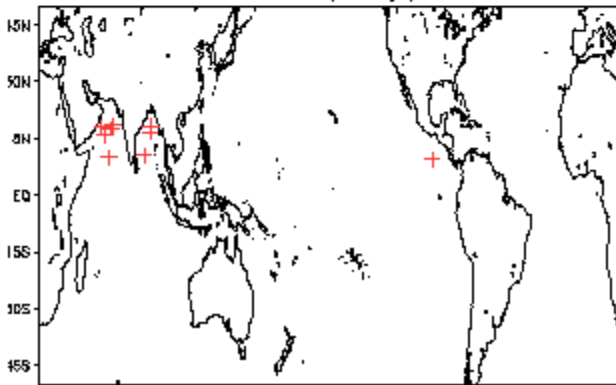
Phase 5 (77 days) 8 storms



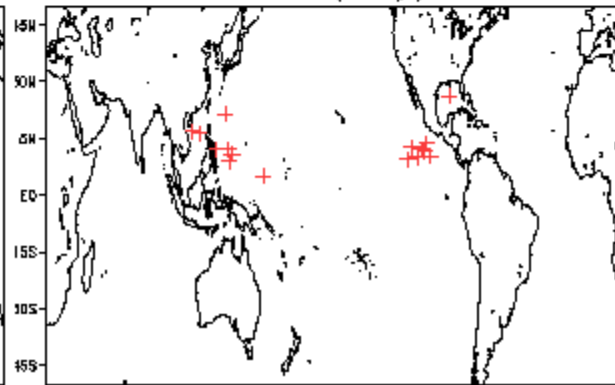
Phase 8 (70 days) 15 storms



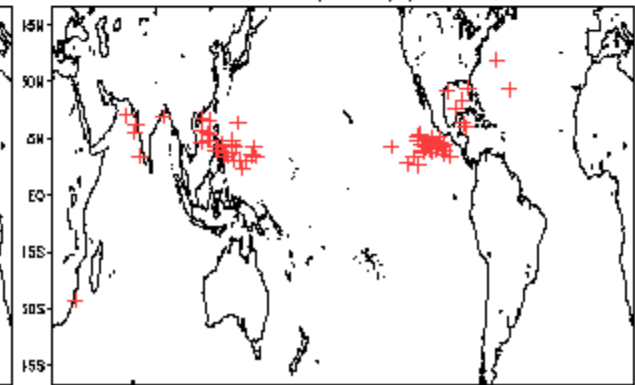
Phase 3 (57 days) 10 storms

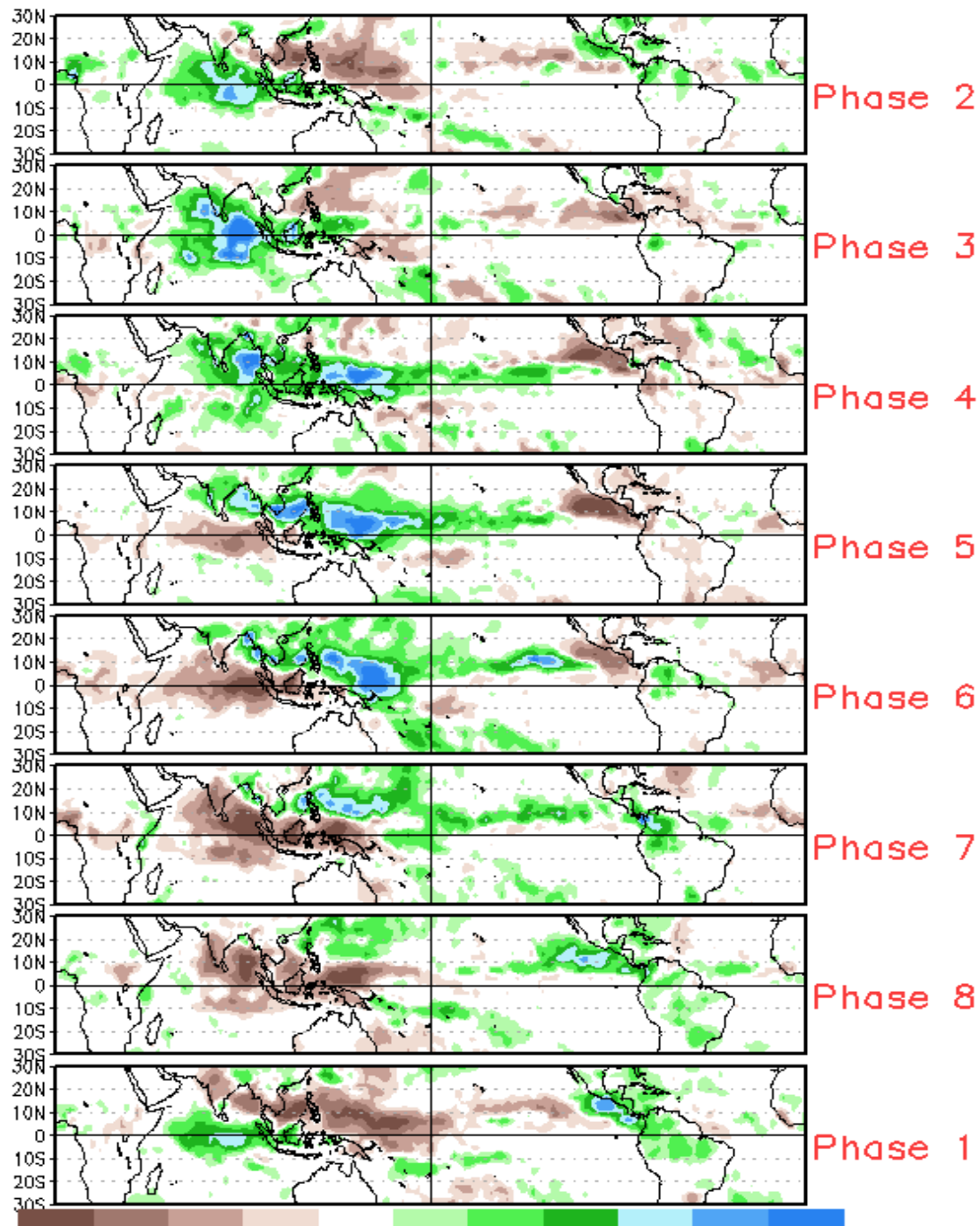


Phase 6 (82 days) 17 storms



Null (423 days) 71 storms

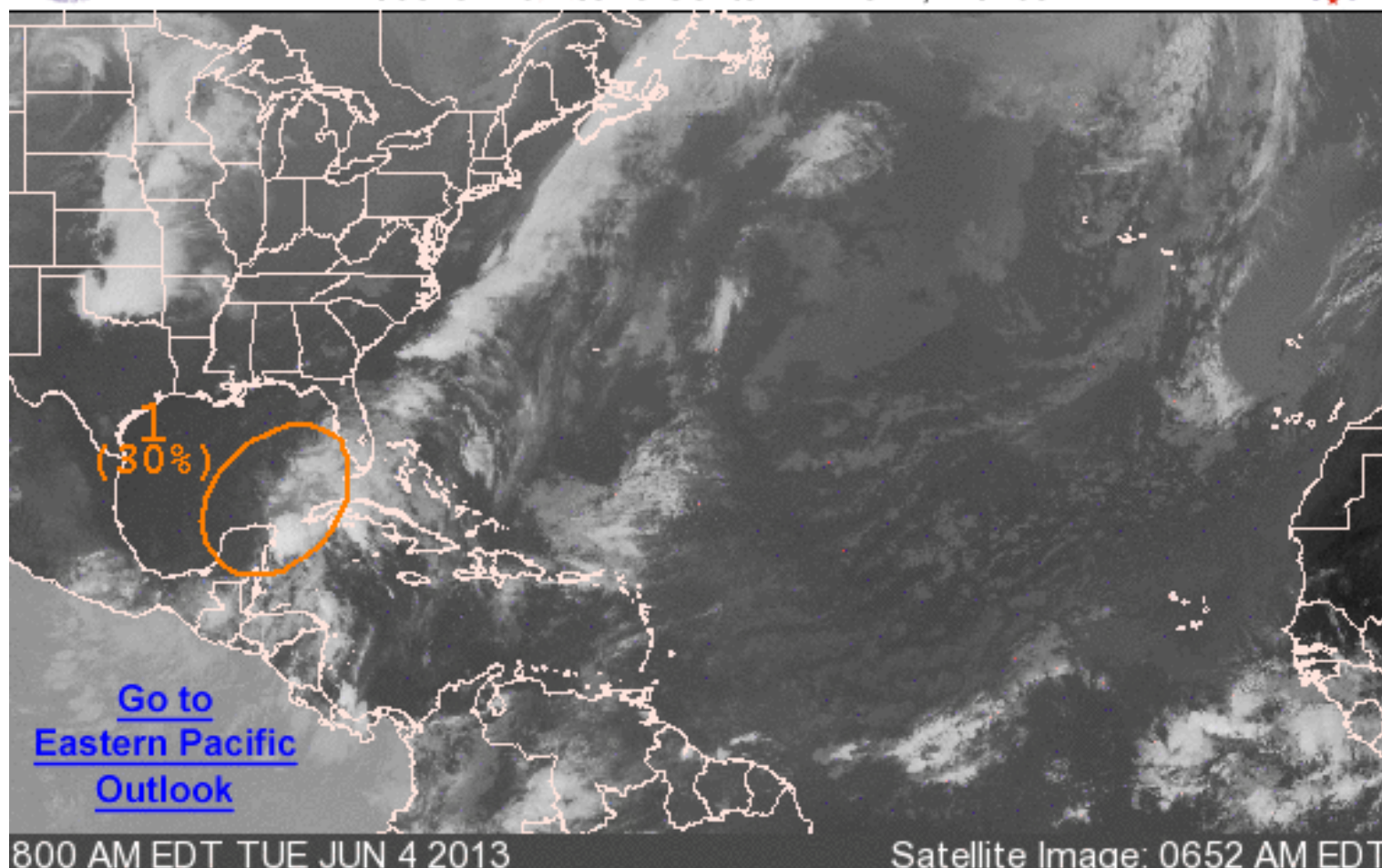






Graphical Tropical Weather Outlook

National Hurricane Center Miami, Florida

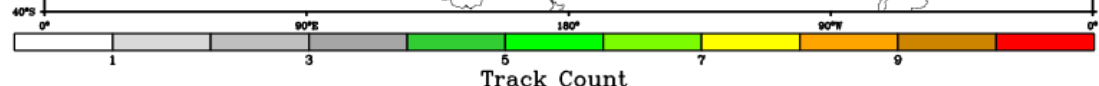
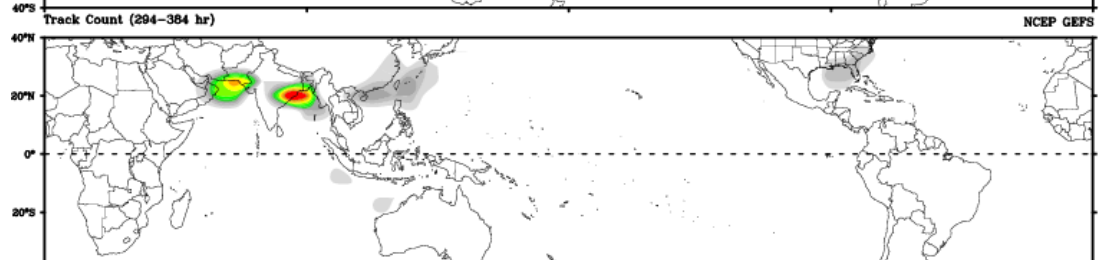
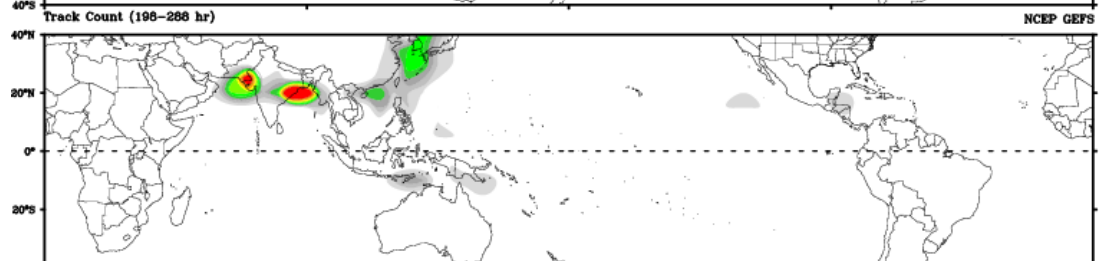
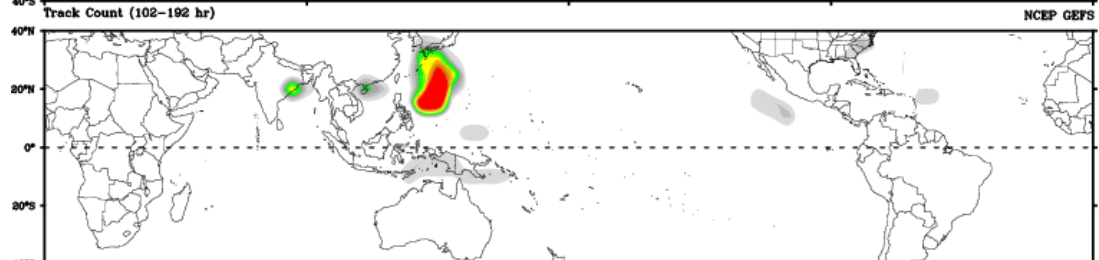
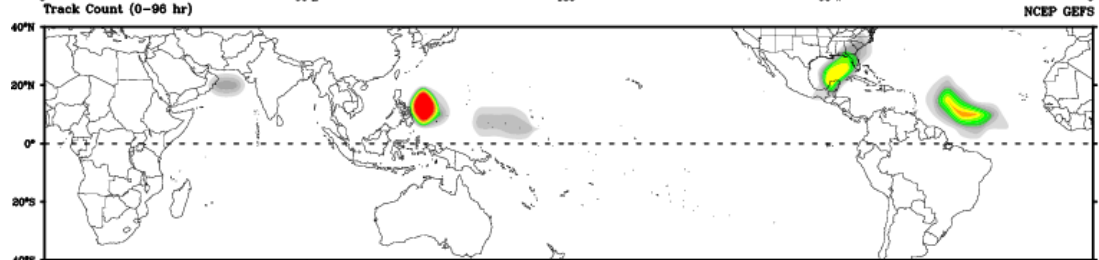
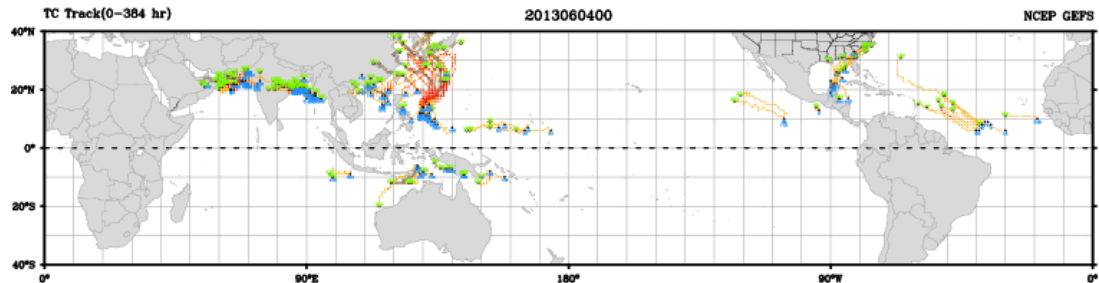


Outlined areas denote current position of systems discussed in the Tropical Weather Outlook. Color indicates probability of tropical cyclone formation within 48 hours.

 Low <30%

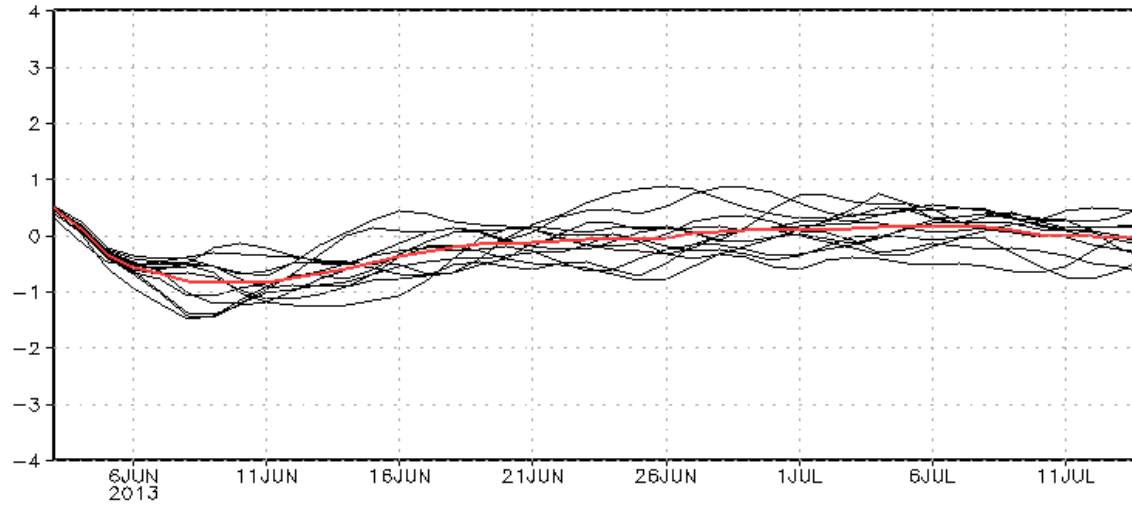
 Medium 30-50%

 High >50%

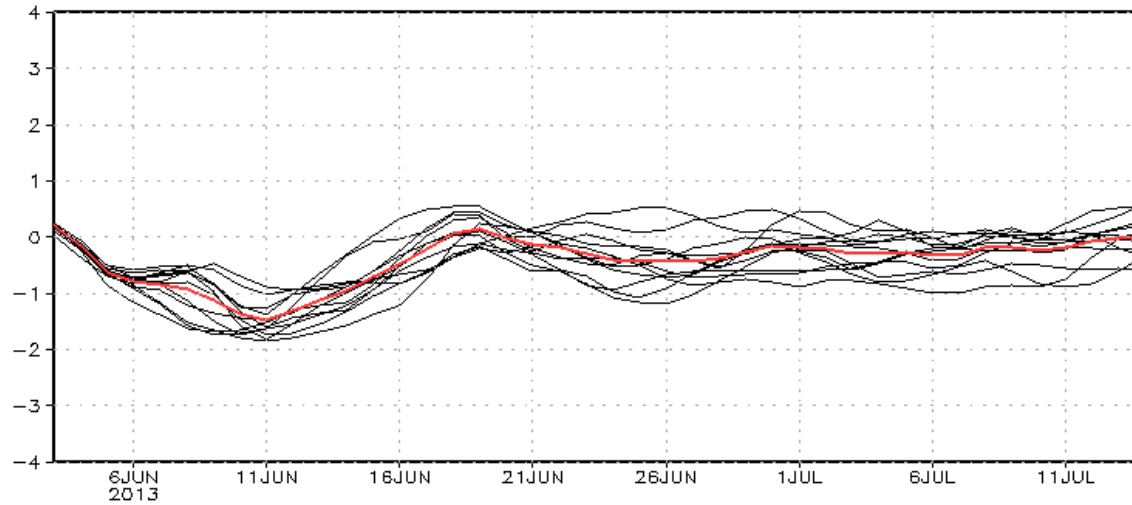


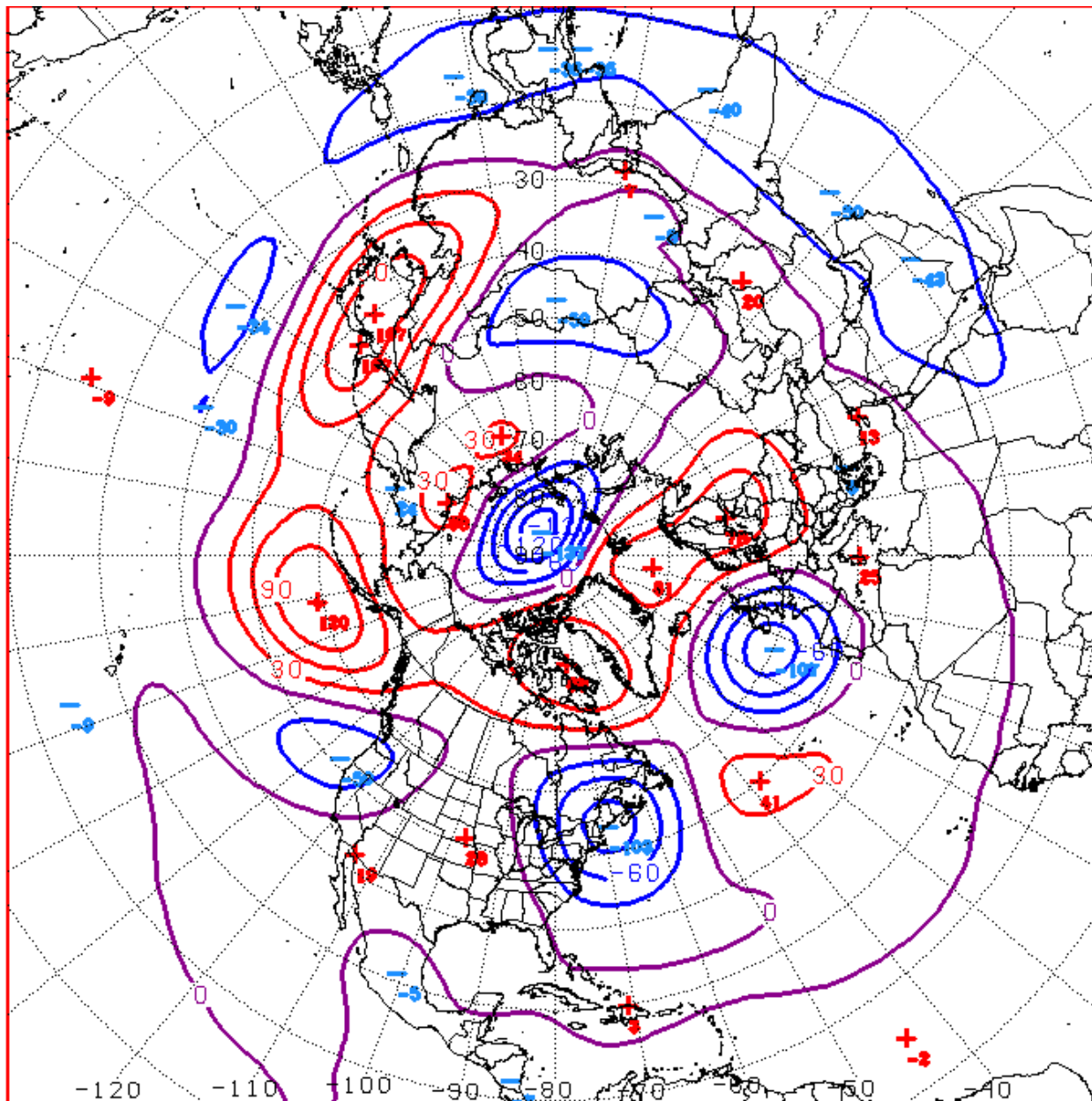
CFSv2 Teleconnection Forecast

NAO CFSv2 Forecast



NAO CFSv2 Bias-Corrected Fcst





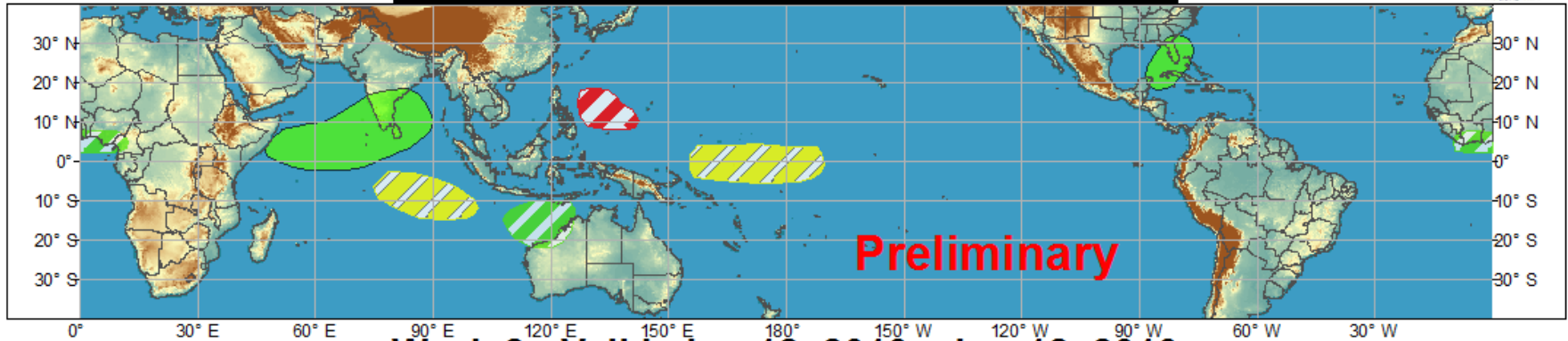
D+11 500 MB ANOMALIES FROM 00Z ECMM
 CPC MAP MADE JUN 04 2013 1046 UTC CNTD JUN 15 2013



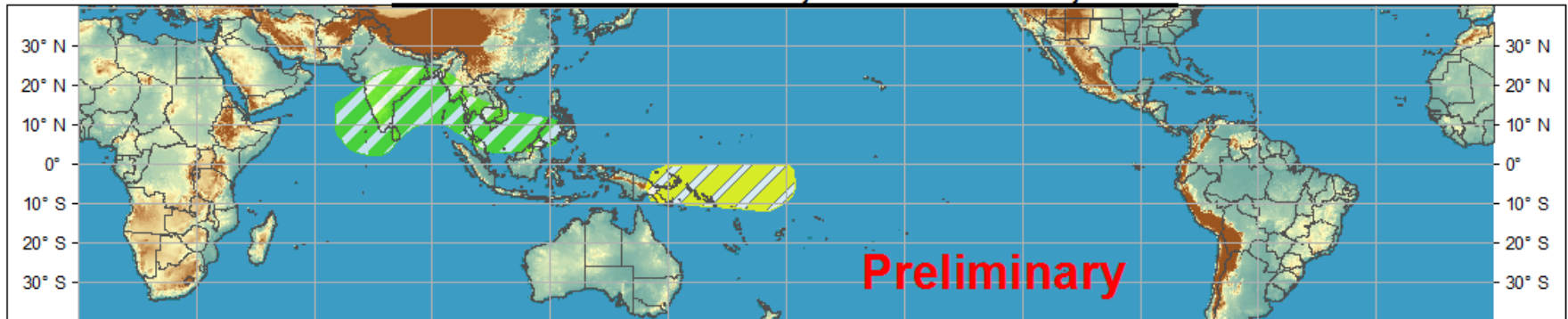
Global Tropics Hazards and Benefits Outlook - Climate Prediction Center



Week 1 - Valid: Jun 05, 2013 - Jun 11, 2013



Week 2 - Valid: Jun 12, 2013 - Jun 18, 2013



Confidence
High Moderate

- | | | |
|-----------------------------------|--|--|
| Tropical Cyclone Formation | | Development of a tropical cyclone that eventually reaches tropical storm/cyclone strength. |
| Above-average rainfall | | Weekly total rainfall in the upper third of the historical range. |
| Below-average rainfall | | Weekly total rainfall in the lower third of the historical range. |
| Above-normal temperatures | | 7-day mean temperatures in the upper third of the historical range. |
| Below-normal temperatures | | 7-day mean temperatures in the lower third of the historical range. |

Produced: 06/04/2013

Forecaster: Baxter

Product is updated once per week. The product targets broad scale conditions integrated over a 7-day period for US interests only. Consult your local responsible forecast agency.

