

Global Tropics Hazards And Benefits Outlook

July 30, 2013

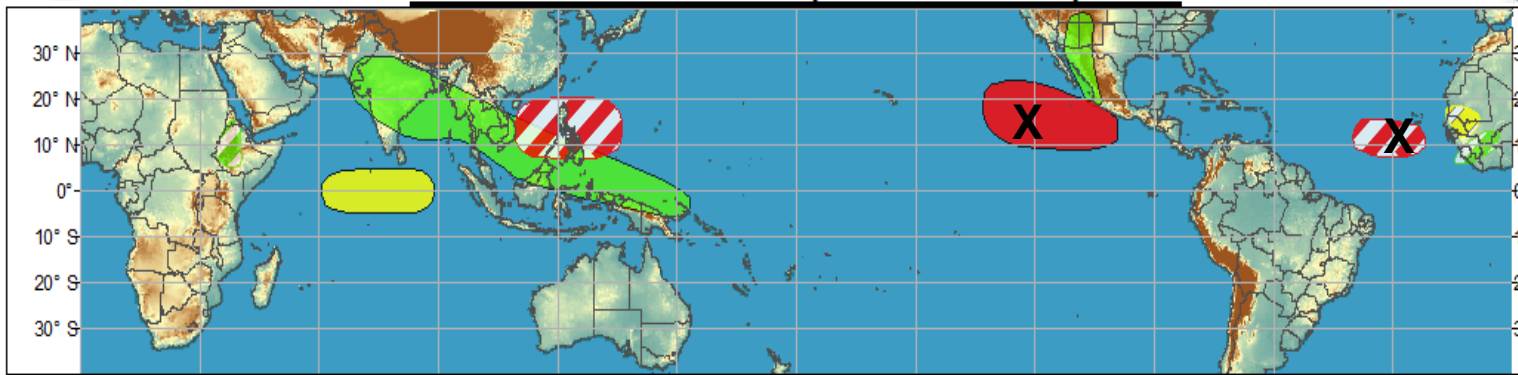
Matthew Rosencrans

Outline

1. Review of Recent Conditions
2. Synopsis of Climate Modes
3. GTH Outlook and Forecast Discussion
4. Connections to U.S. Impacts

Outlook Review

Week 1 - Valid: Jul 24, 2013 - Jul 30, 2013



Week 2 - Valid: Jul 24, 2013 - Jul 30, 2013

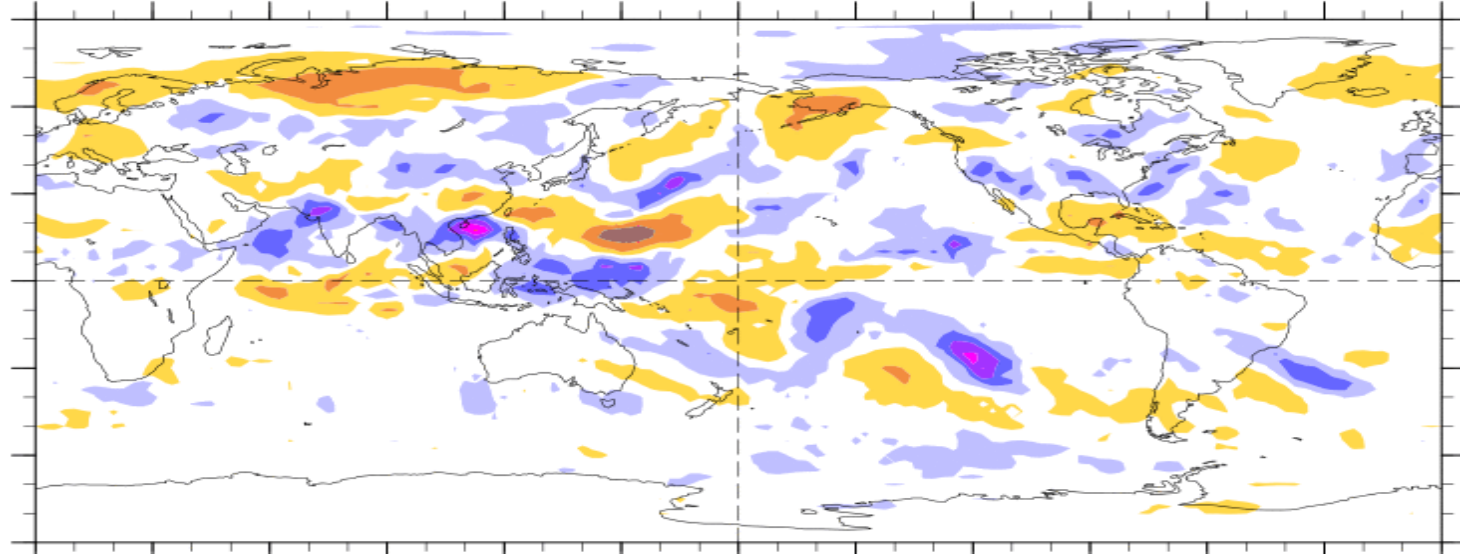


7-Day Average OLR Anomaly

2013/07/22 - 2013/07/28

Cool shading
More clouds/rain

Warm shading
Less clouds/rain



Synopsis of Climate Modes

ENSO:

- ENSO-neutral conditions are favored to continue through Northern Hemisphere fall 2013

MJO and other subseasonal tropical variability:

- The MJO was weak as the atmospheric circulation was inconsistent with a coherent and robust MJO event. Other modes of variability are evident in the observations, and play a role in the current outlook.
- Dynamical and statistical model MJO index forecasts generally indicate little to no amplitude in the MJO during most of the next 2 weeks.
- Tropical cyclone formation probabilities are forecast to be increased over the western and eastern Pacific, with more confidence about increased over the eastern Pacific.

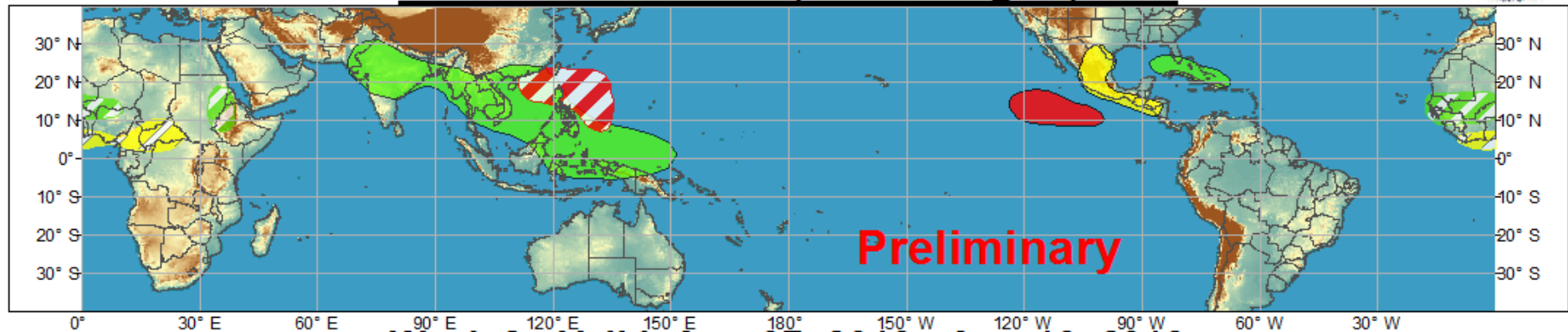
Extratropics:

- The MJO is not likely to have a major impact on the circulation over the CONUS.



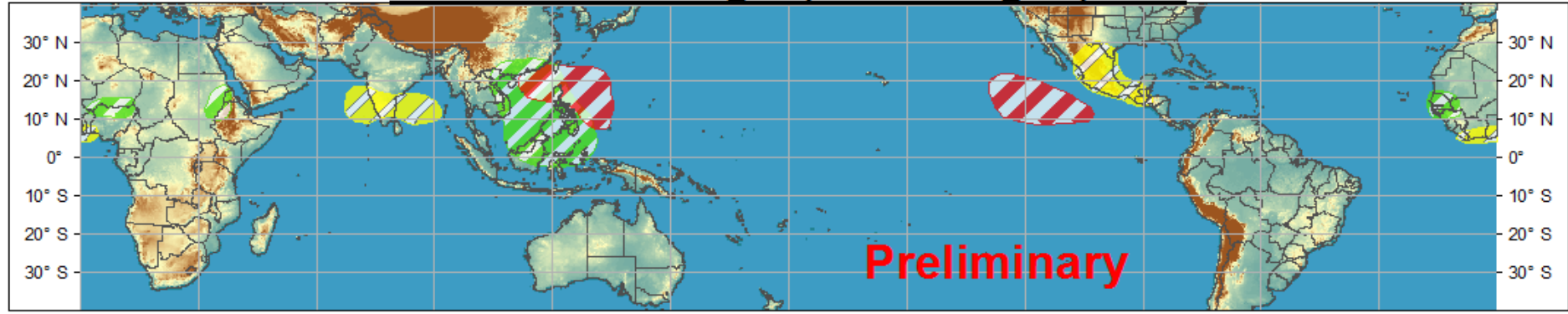
Global Tropics Hazards and Benefits Outlook - Climate Prediction Center

Week 1 - Valid: Jul 31, 2013 - Aug 06, 2013



Preliminary

Week 2 - Valid: Aug 07, 2013 - Aug 13, 2013



Preliminary

Produced: 07/30/2013

Forecaster: Rosencrans

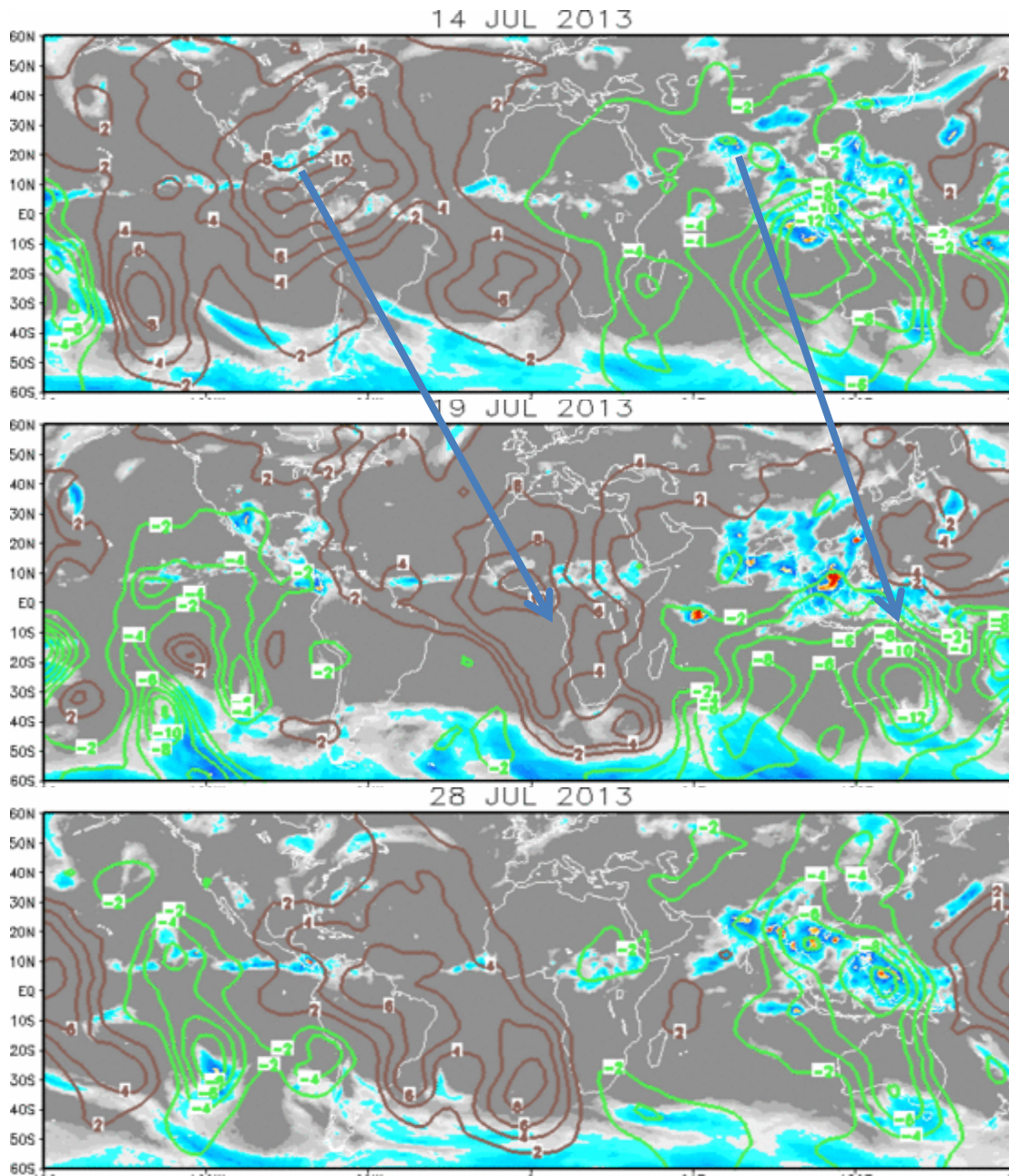
- Confidence**
High Moderate
- Tropical Cyclone Formation** Development of a tropical cyclone that eventually reaches tropical storm/cyclone strength.
 - Above-average rainfall** Weekly total rainfall in the upper third of the historical range.
 - Below-average rainfall** Weekly total rainfall in the lower third of the historical range.
 - Above-normal temperatures** 7-day mean temperatures in the upper third of the historical range.
 - Below-normal temperatures** 7-day mean temperatures in the lower third of the historical range.

Product is updated once per week. The product targets broad scale conditions integrated over a 7-day period for US interests only. Consult your local responsible forecast agency.

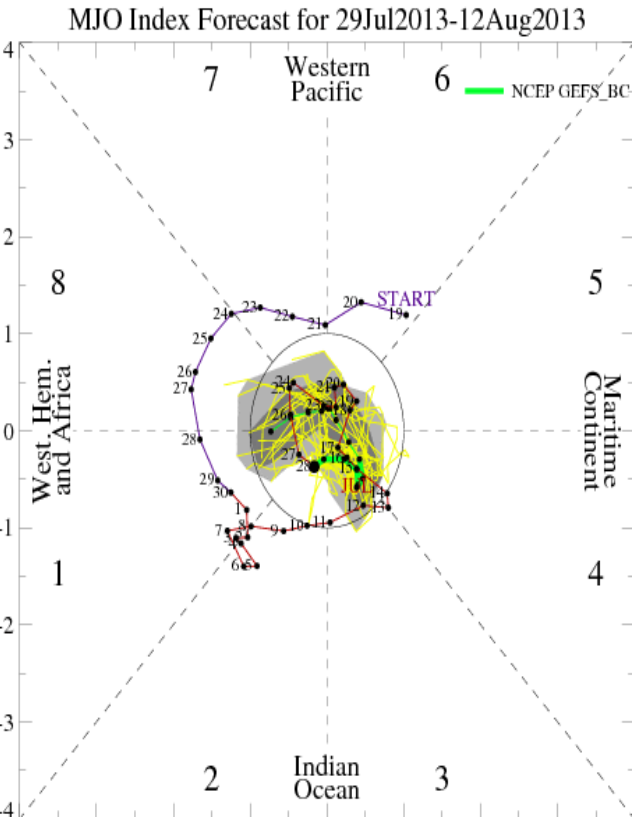


IR Satellite & 200-hpa Velocity Potential Anomalies

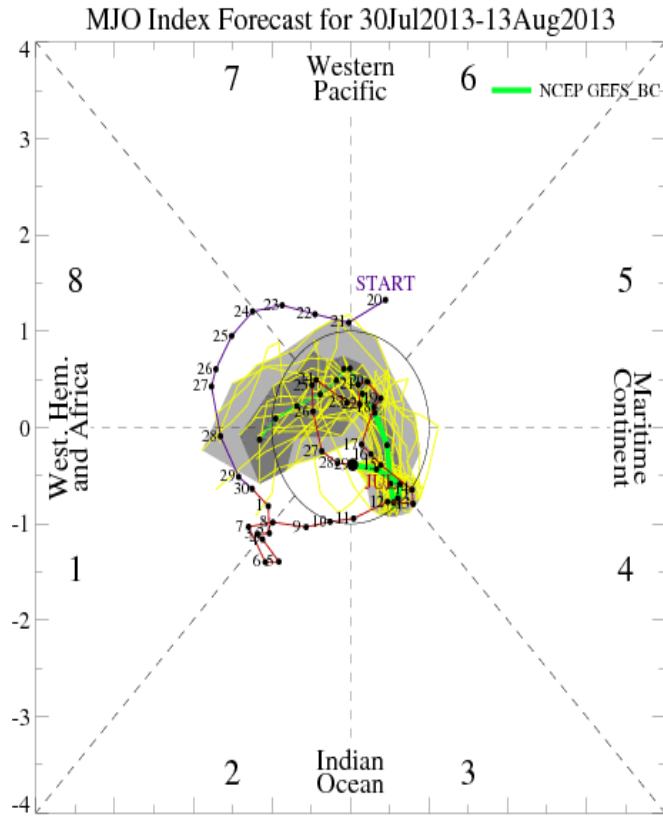
Green: Enhanced Divergence Brown: Enhanced Convergence



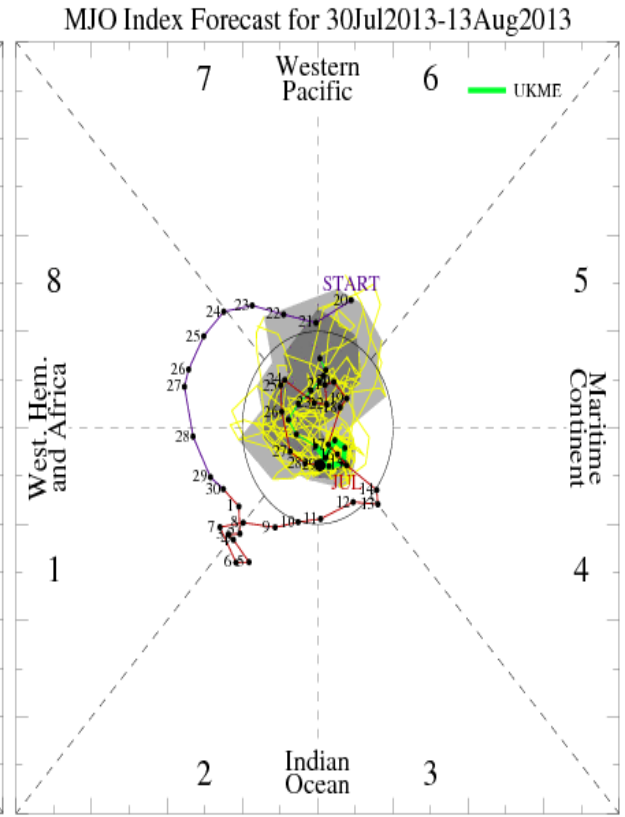
MJO Observation/Forecast



GFS

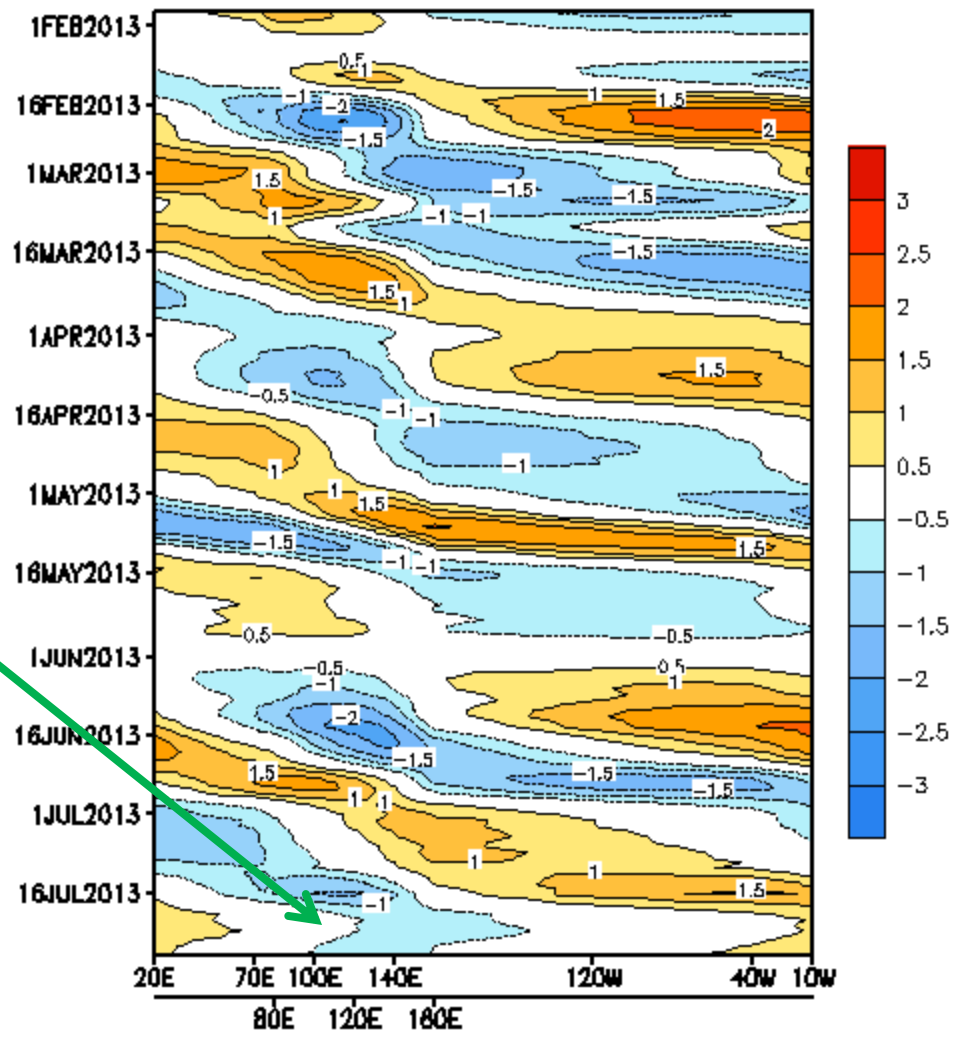


ECMWF

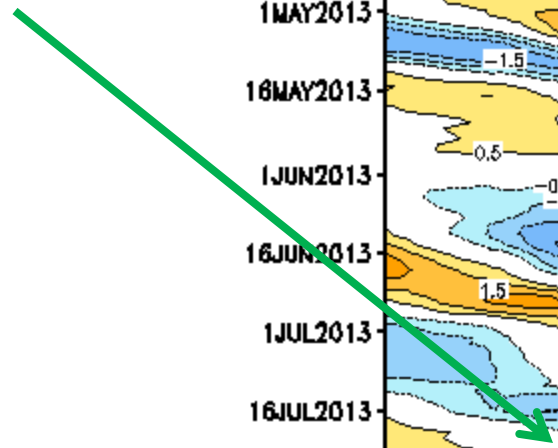


UKMET

5 -day Running Mean

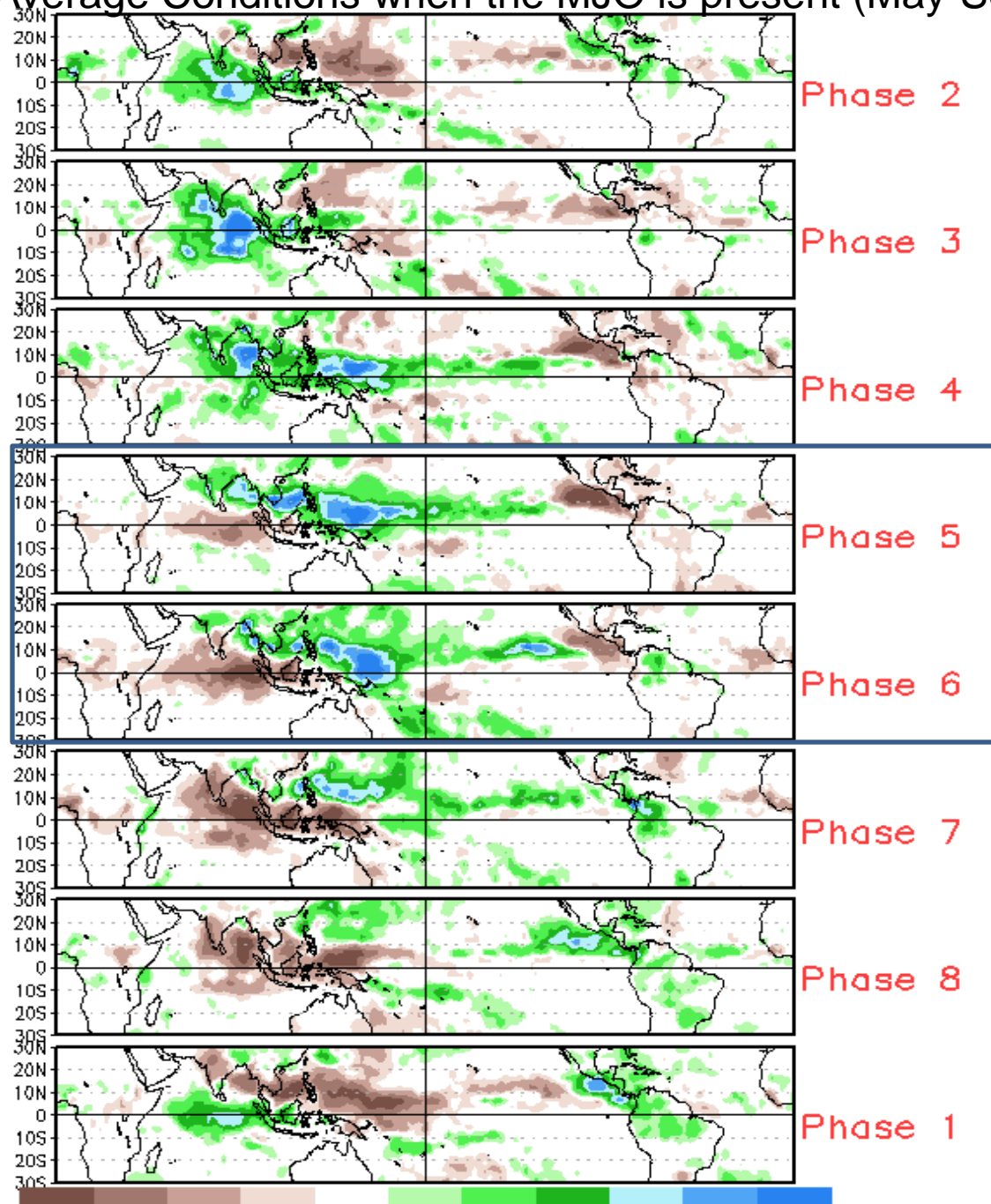


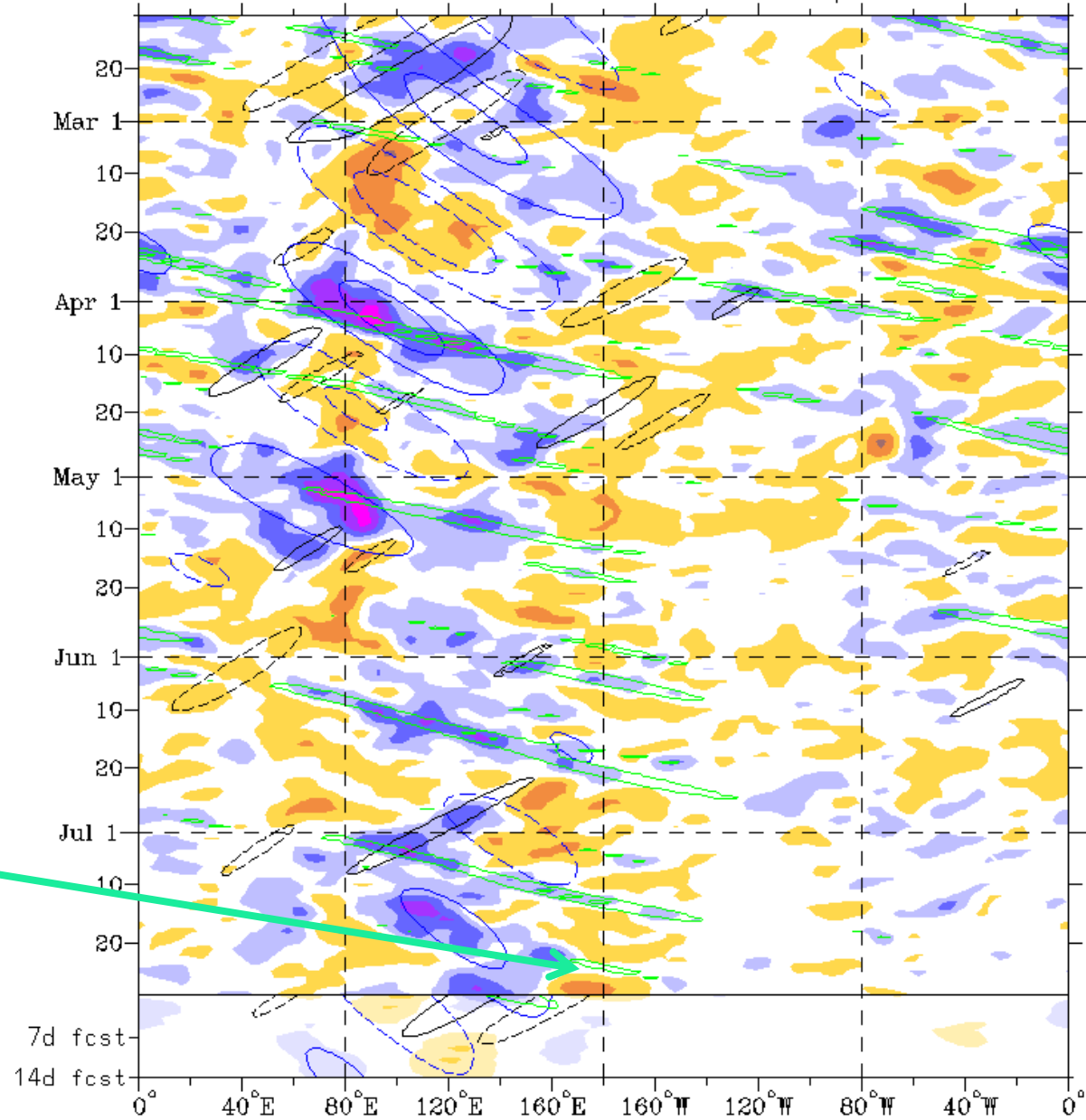
The breakdown of the MJO signal is apparent on the CPC MJO index



Data updated through 30 Jul 2013

Average Conditions when the MJO is present (May-Sep)

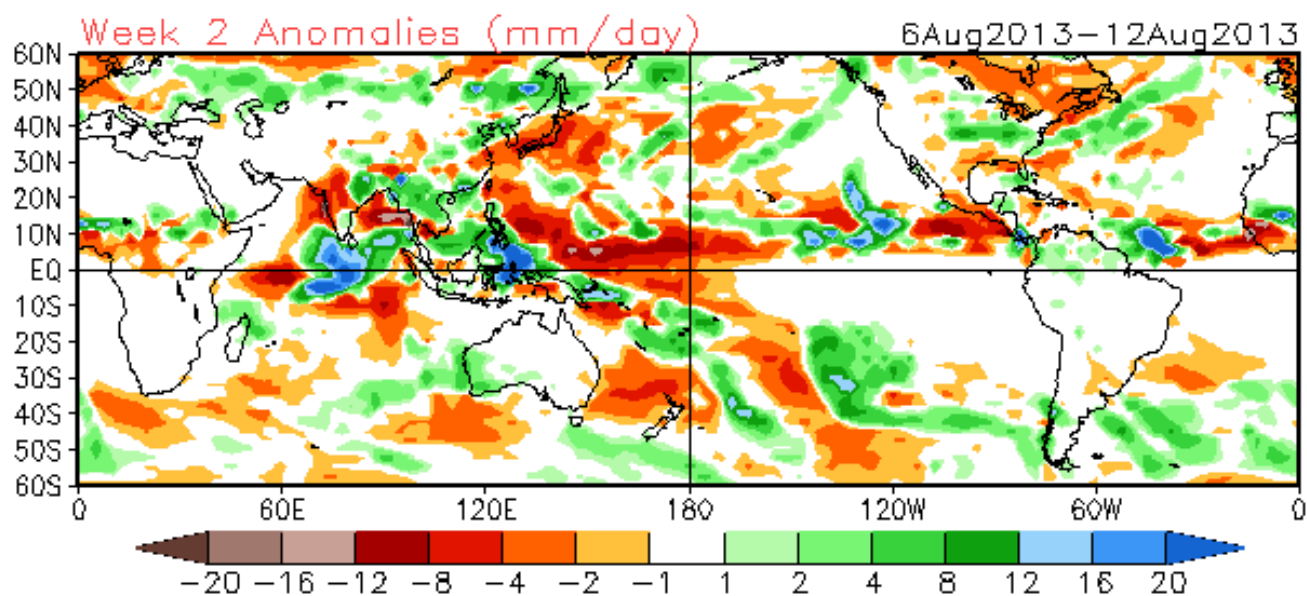
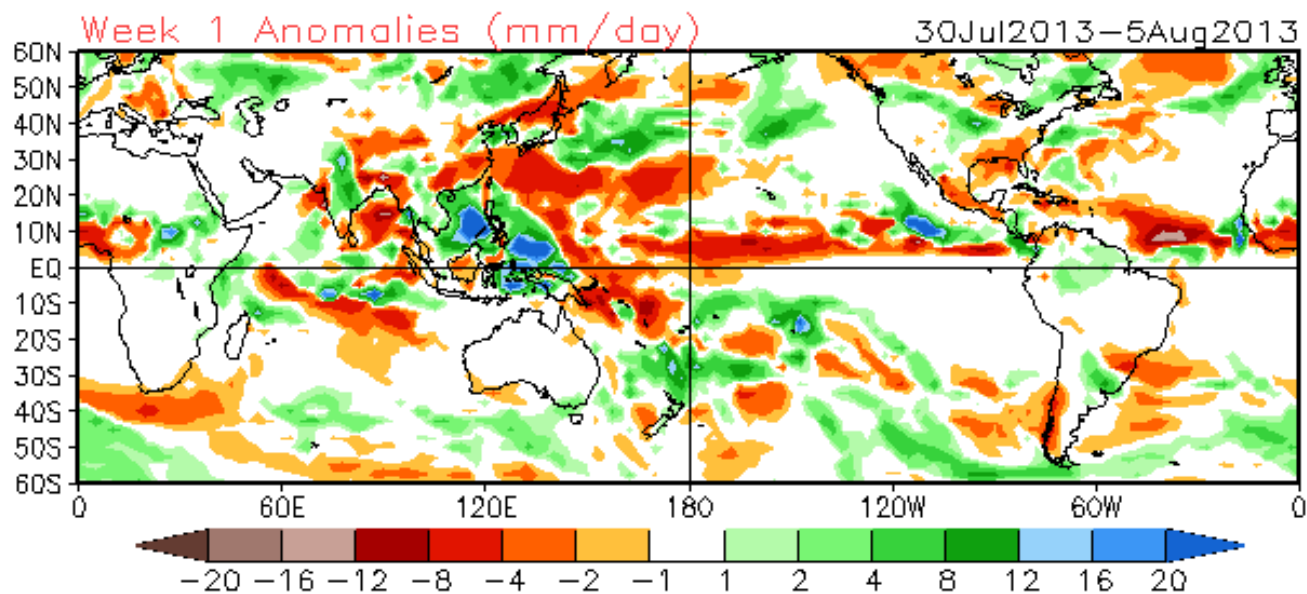


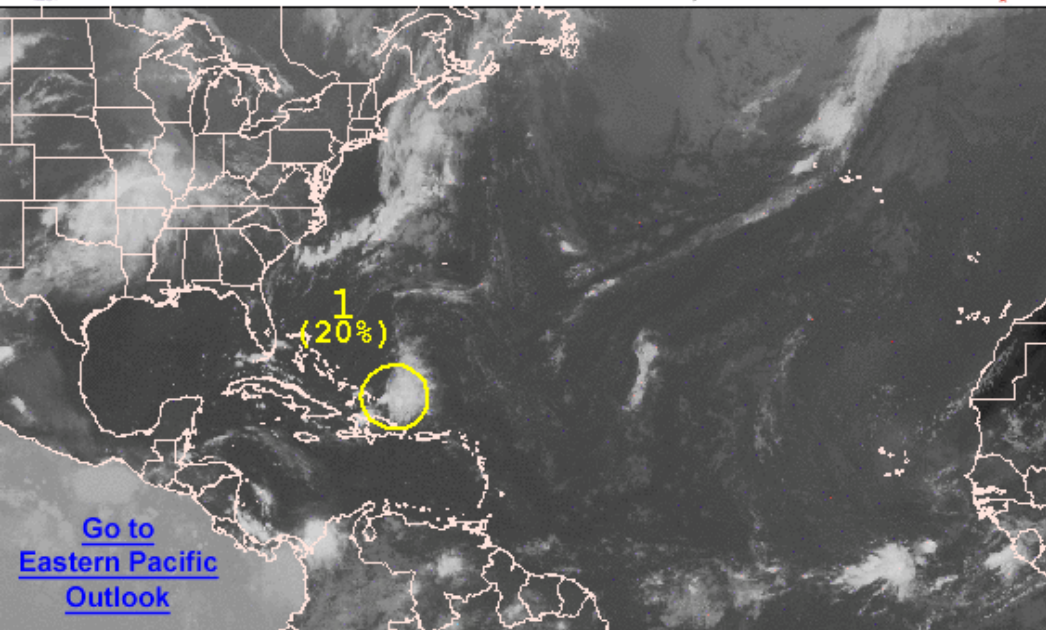


MJO not likely to have a big impact during the next two weeks.

Atmospheric Kelvin waves to impact Americas (green lines).

Forecasts indicate fluctuations in the Asian Monsoon.

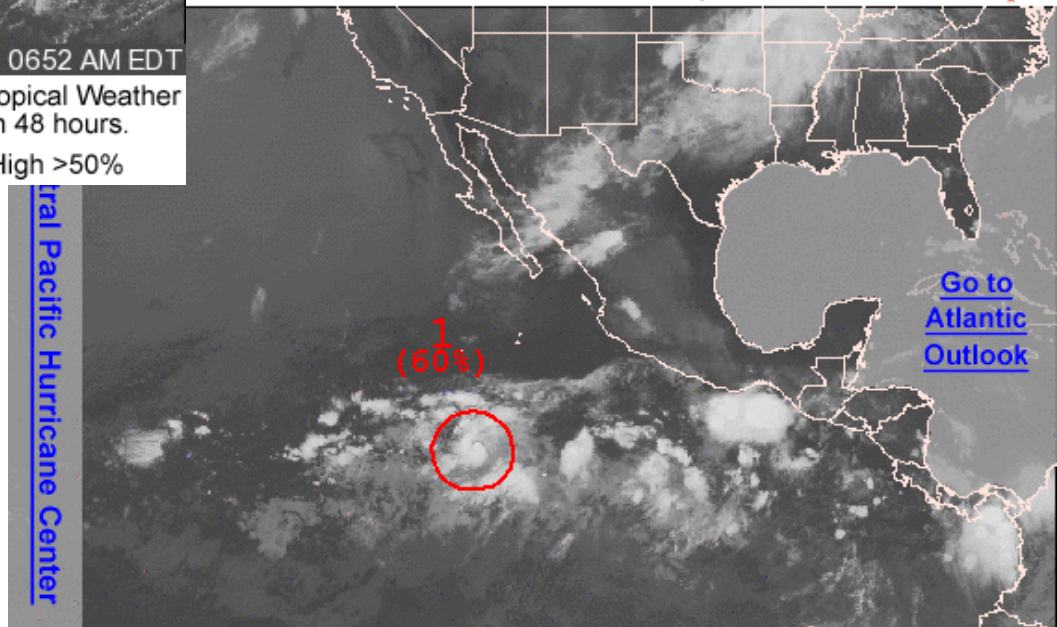




Satellite Image: 0652 AM EDT

Outlined areas denote current position of systems discussed in the Tropical Weather Outlook. Color indicates probability of tropical cyclone formation within 48 hours.

 Low <30%  Medium 30-50%  High >50%



Satellite Image: 0352 AM PDT

Outlined areas denote current position of systems discussed in the Tropical Weather Outlook. Color indicates probability of tropical cyclone formation within 48 hours.

 Low <30%  Medium 30-50%  High >50%

Active Pacific Basin.

Slight chance for Atlantic TC, late week-2.

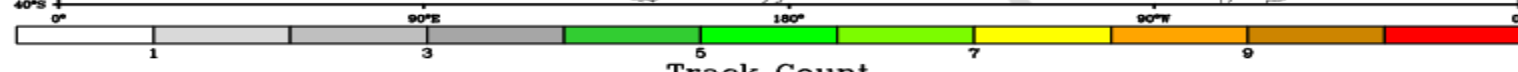
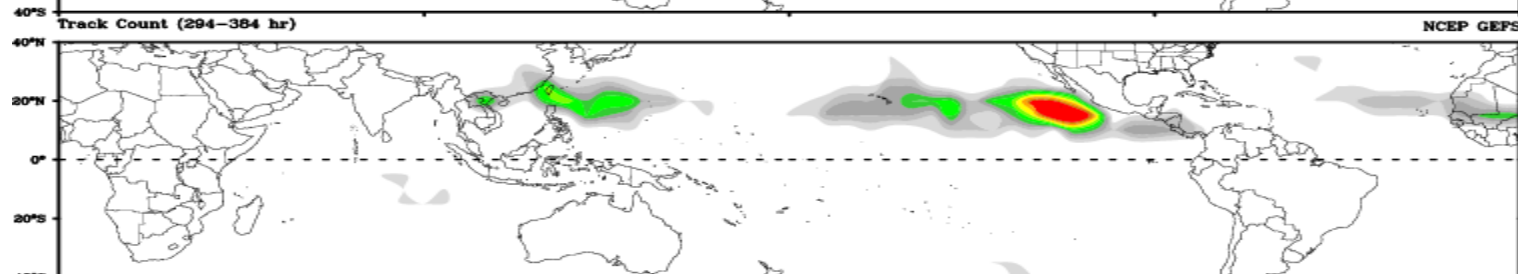
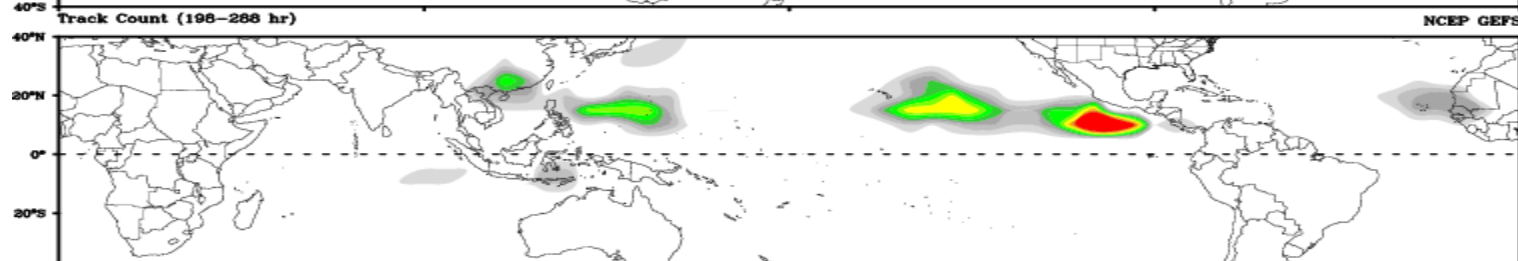
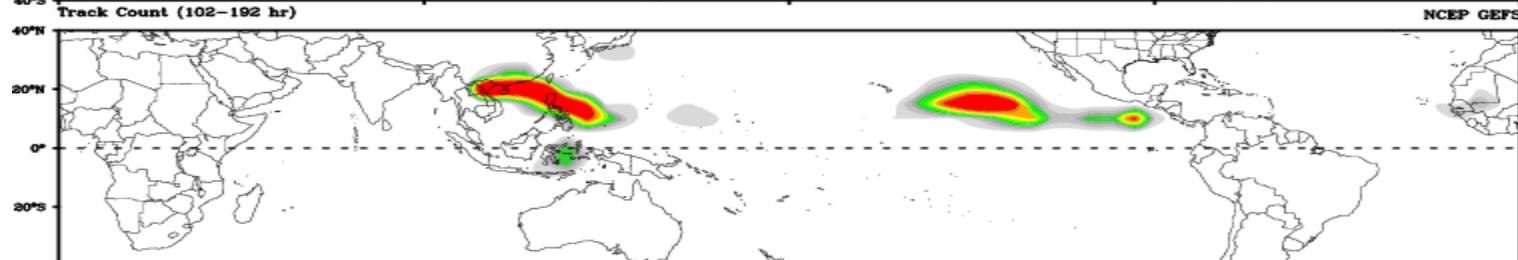
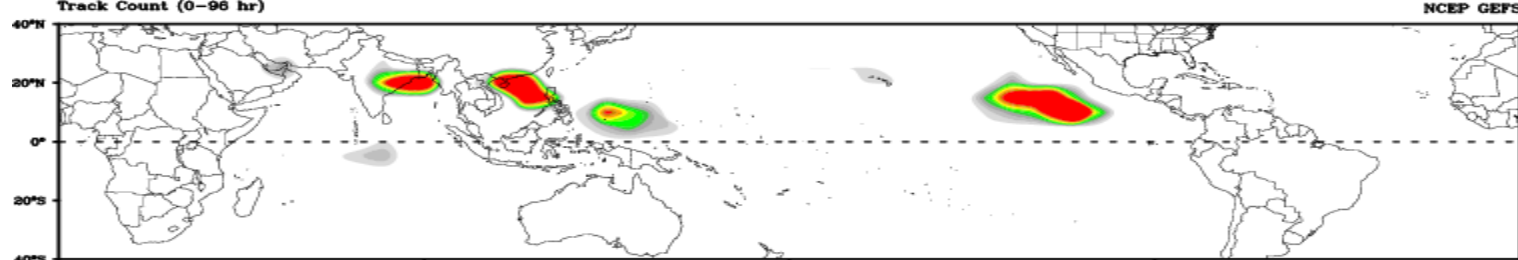
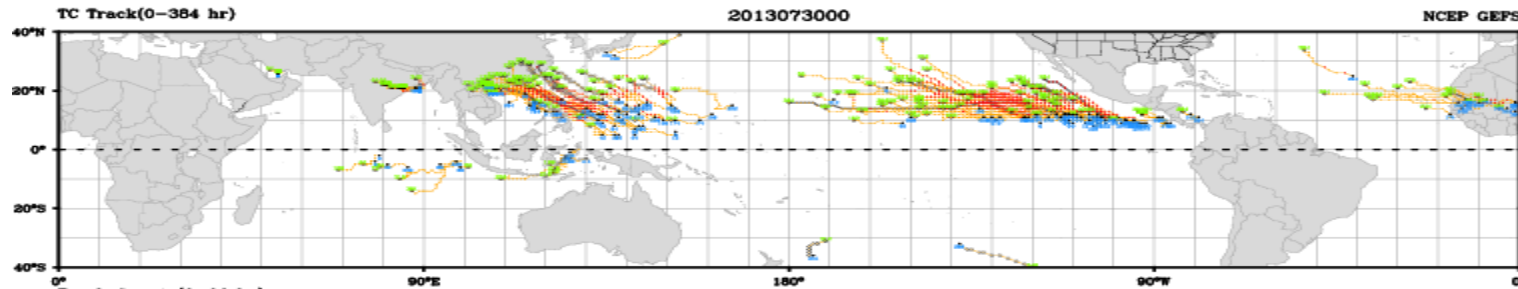
LOW PROBABILITY

Days 1-4

Day 5-8

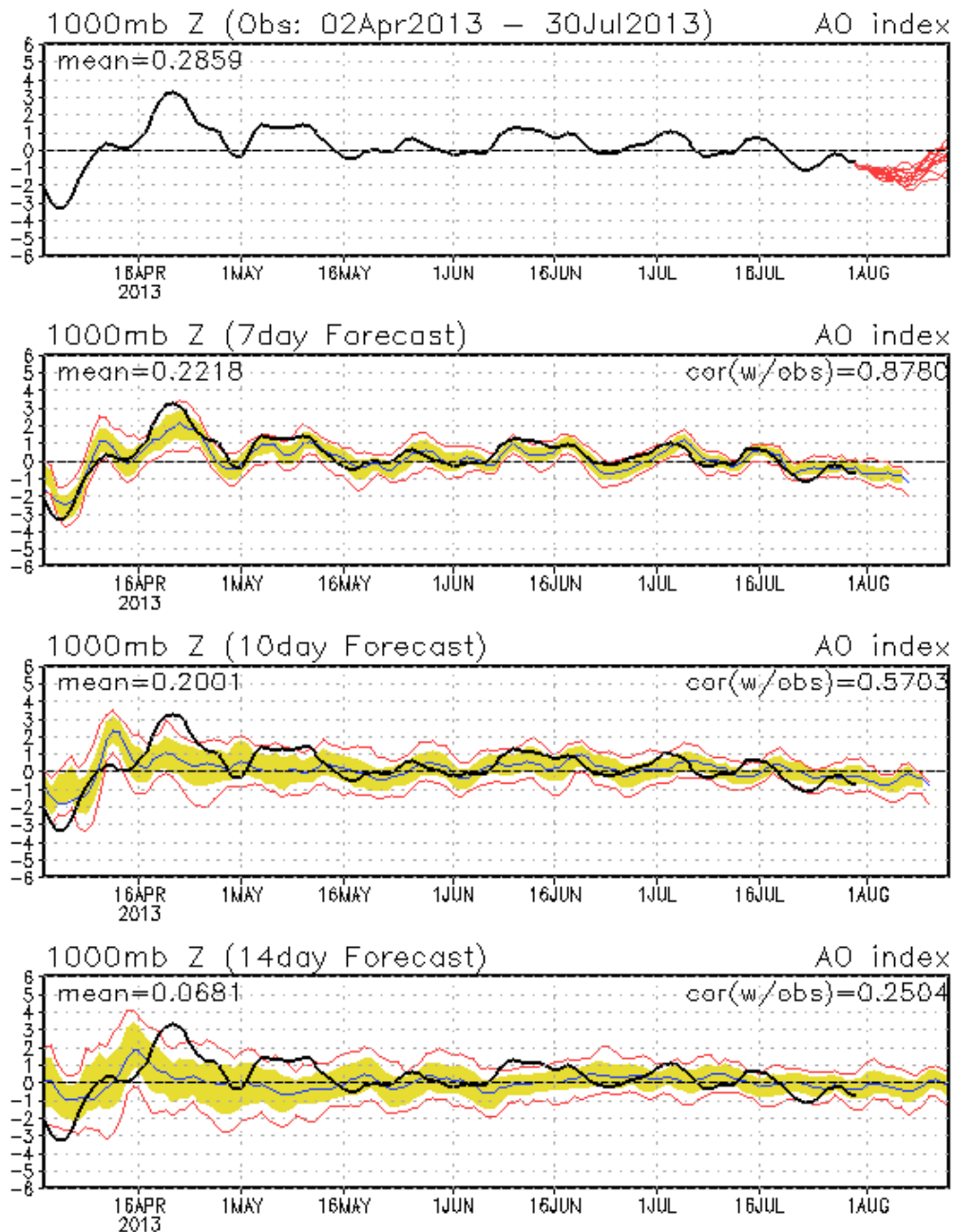
Day 9-12

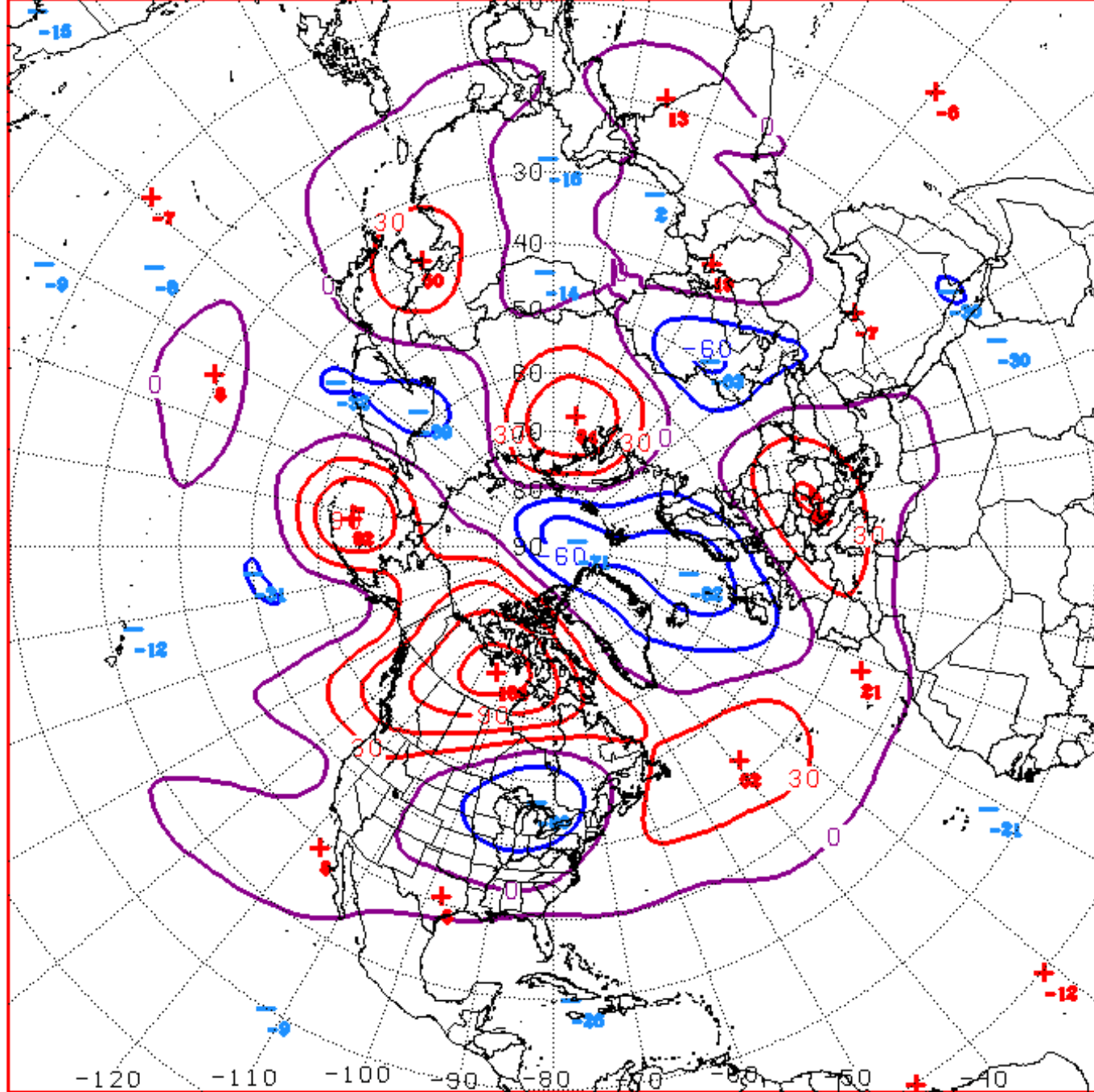
Day 12-16



Connections to U.S. Impacts

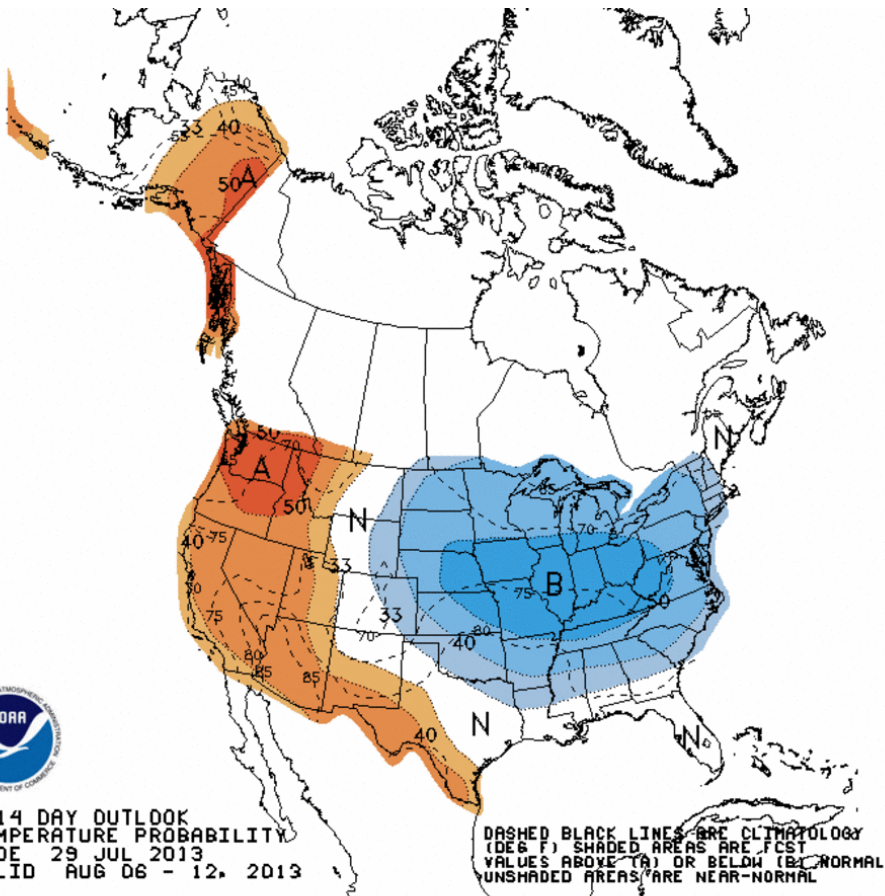
AO: Observed & ENSM forecasts





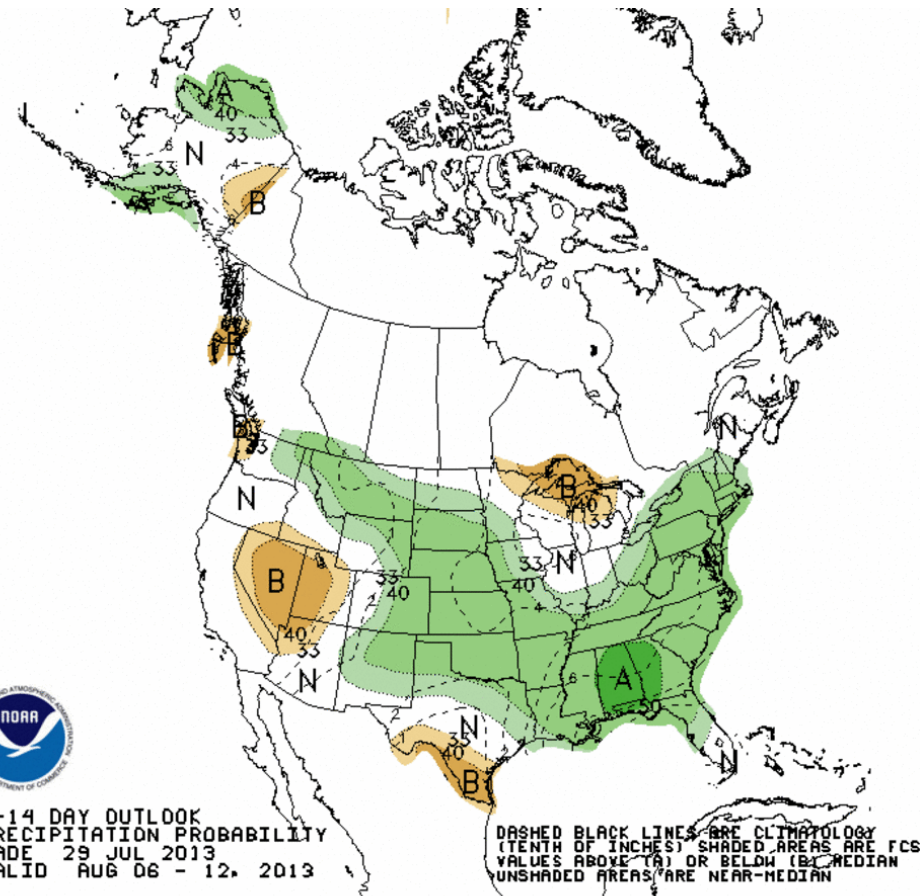
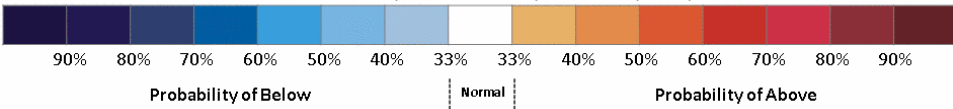
D+11 500 MB ANOMALIES FROM 00Z ECMM
 CPC MAP MADE JUL 30 2013 1119 UTC CNTD AUG 10 2013

Week 2 – Temperature and Precipitation



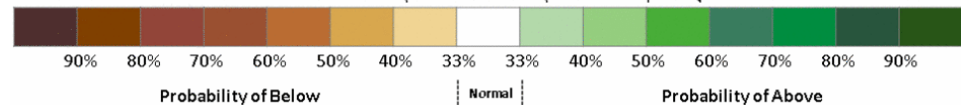
8-14 DAY OUTLOOK
TEMPERATURE PROBABILITY
MADE 29 JUL 2013
VALID AUG 06 - 12, 2013

DASHED BLACK LINES ARE CLIMATOLOGY (DEG F). SHADED AREAS ARE FCST VALUES ABOVE (A) OR BELOW (B) NORMAL. UNSHADED AREAS ARE NEAR-NORMAL.



8-14 DAY OUTLOOK
PRECIPITATION PROBABILITY
MADE 29 JUL 2013
VALID AUG 06 - 12, 2013

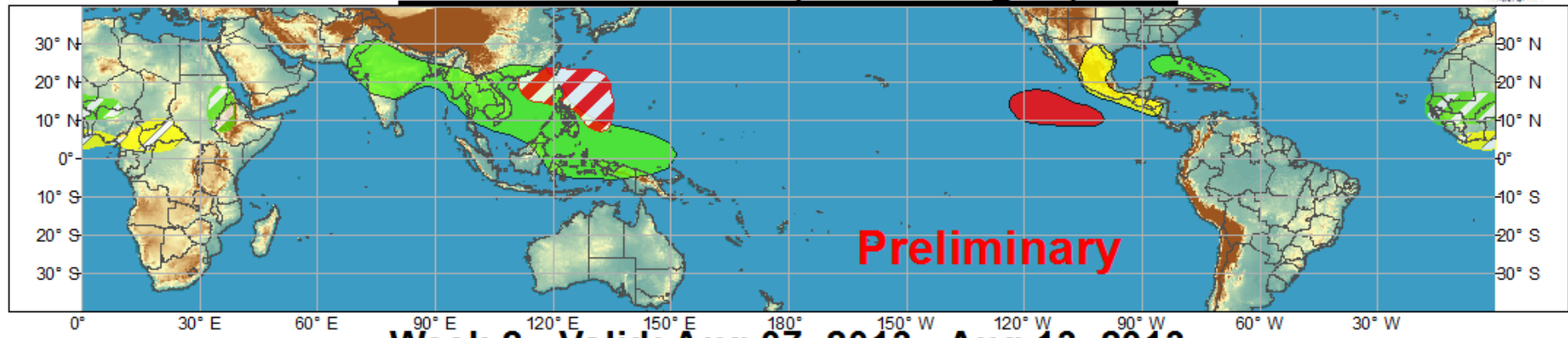
DASHED BLACK LINES ARE CLIMATOLOGY (TENTH OF INCHES). SHADED AREAS ARE FCST VALUES ABOVE (A) OR BELOW (B) MEDIAN. UNSHADED AREAS ARE NEAR-MEDIAN.



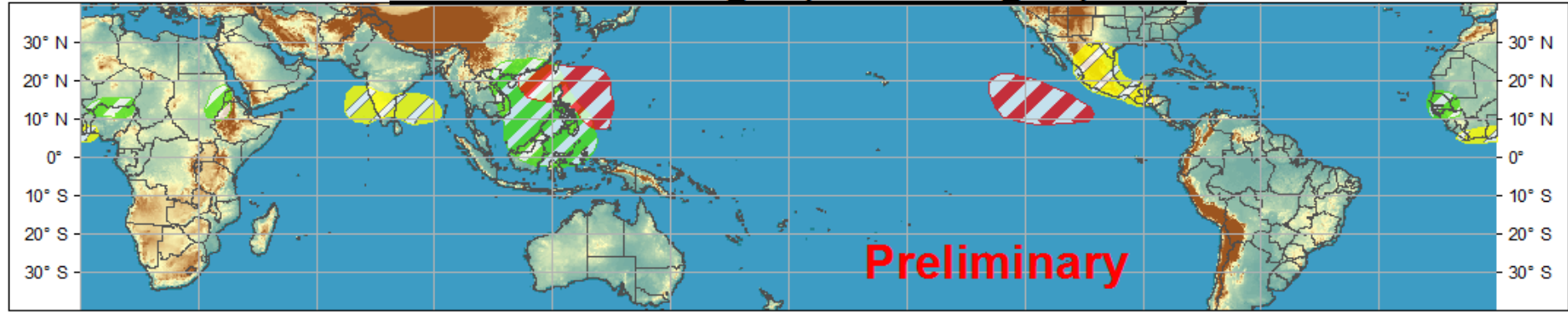


Global Tropics Hazards and Benefits Outlook - Climate Prediction Center

Week 1 - Valid: Jul 31, 2013 - Aug 06, 2013



Week 2 - Valid: Aug 07, 2013 - Aug 13, 2013



Produced: 07/30/2013

Forecaster: Rosencrans

- | | Confidence | | |
|-----------------------------------|------------|----------|--|
| | High | Moderate | |
| Tropical Cyclone Formation | | | Development of a tropical cyclone that eventually reaches tropical storm/cyclone strength. |
| Above-average rainfall | | | Weekly total rainfall in the upper third of the historical range. |
| Below-average rainfall | | | Weekly total rainfall in the lower third of the historical range. |
| Above-normal temperatures | | | 7-day mean temperatures in the upper third of the historical range. |
| Below-normal temperatures | | | 7-day mean temperatures in the lower third of the historical range. |

Product is updated once per week. The product targets broad scale conditions integrated over a 7-day period for US interests only. Consult your local responsible forecast agency.

