

Global Tropics Hazards And Benefits Outlook

August 13, 2013

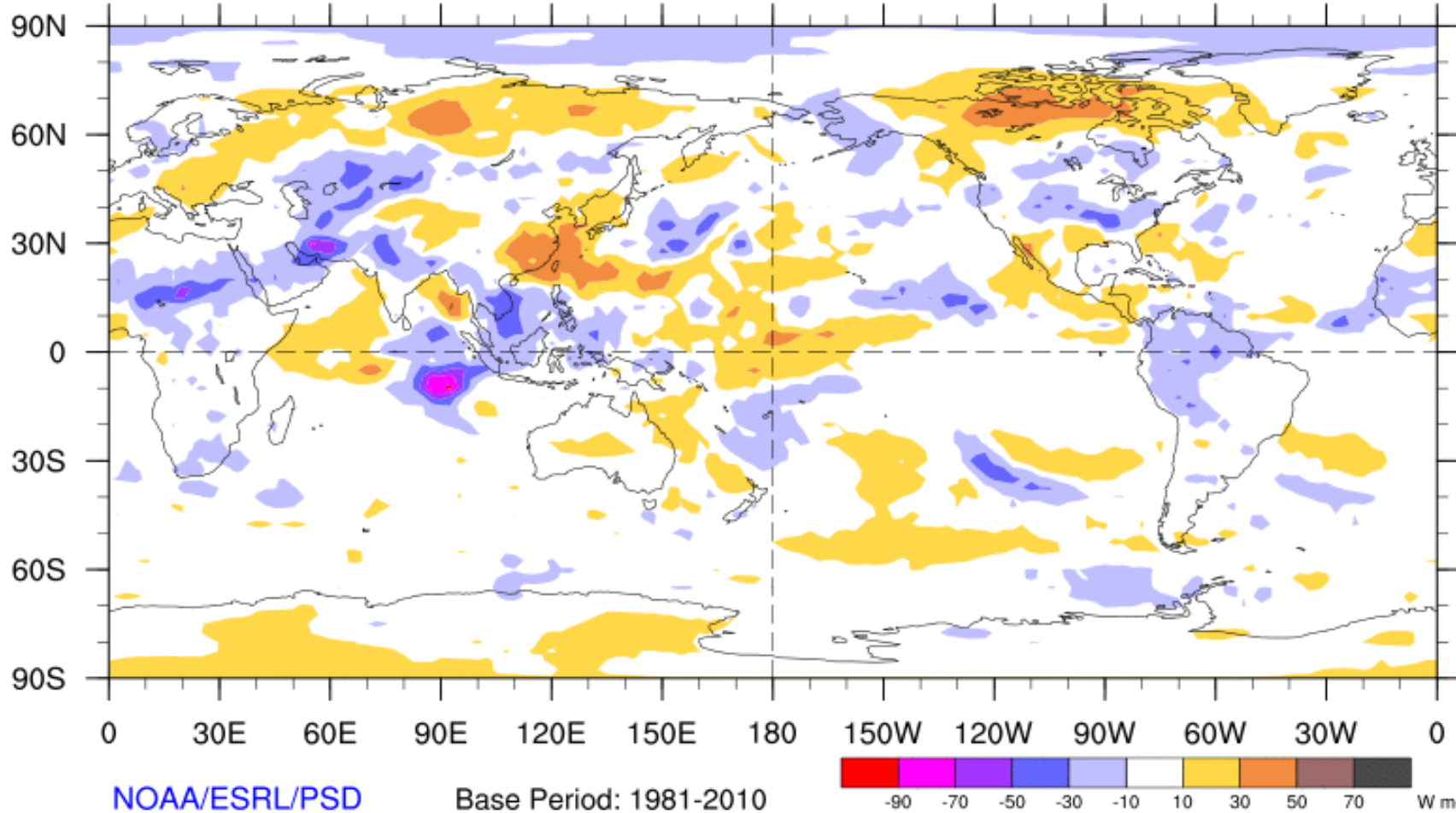
Steve Baxter

Outline

1. Review of Recent Conditions
2. Synopsis of Climate Modes
3. GTH Outlook and Forecast Discussion

7-Day Average OLR Anomaly

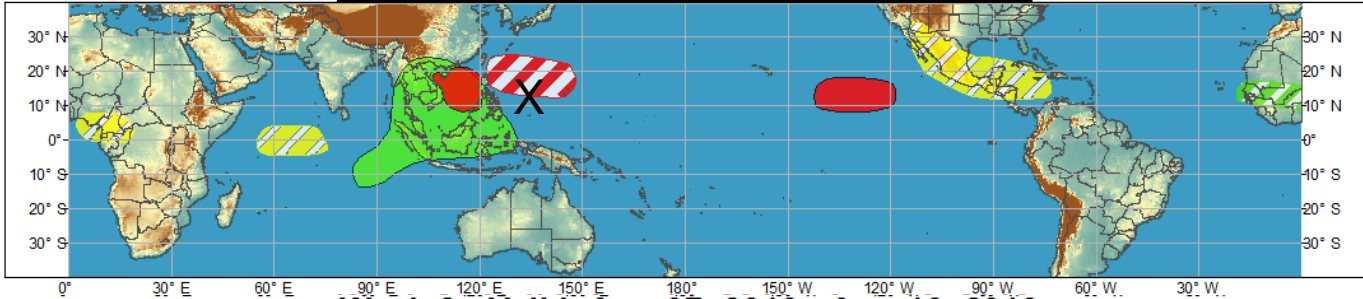
2013/08/05 - 2013/08/11



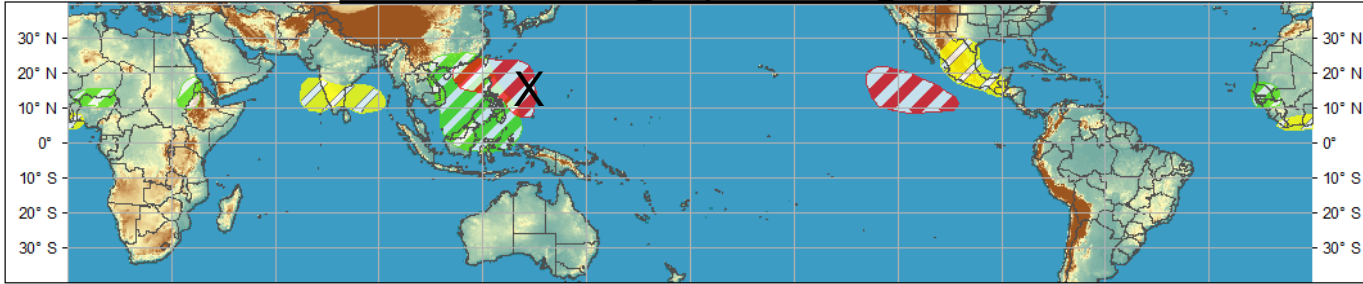
Outlook Review



Week 1 - Valid: Aug 07, 2013 - Aug 13, 2013

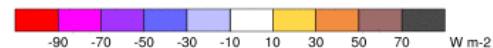
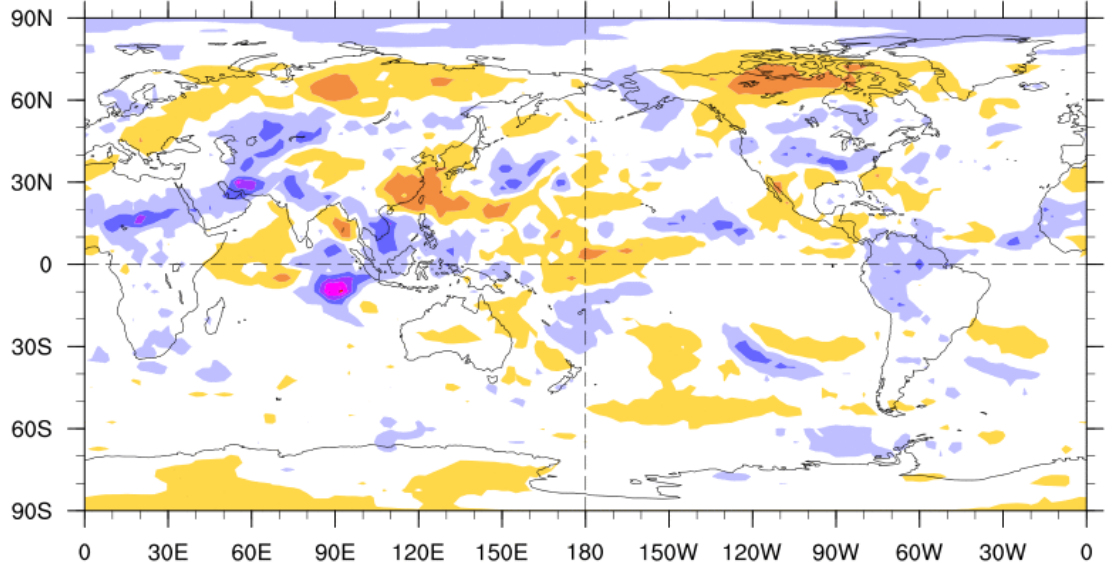


Week 2 - Valid: Aug 07, 2013 - Aug 13, 2013



7-Day Average OLR Anomaly

2013/08/05 - 2013/08/11



Cool shading
More clouds/rain

Warm shading
Less clouds/rain

Synopsis of Climate Modes

ENSO:

- ENSO-neutral conditions are favored to continue through late boreal autumn 2013.

MJO and other subseasonal tropical variability:

- The MJO has remained weak over the past seven to ten days.
- Model MJO index forecasts indicate a weak signal through Week-1, with some slight tendency toward Phase 8 later in Week-2.

Tropics:

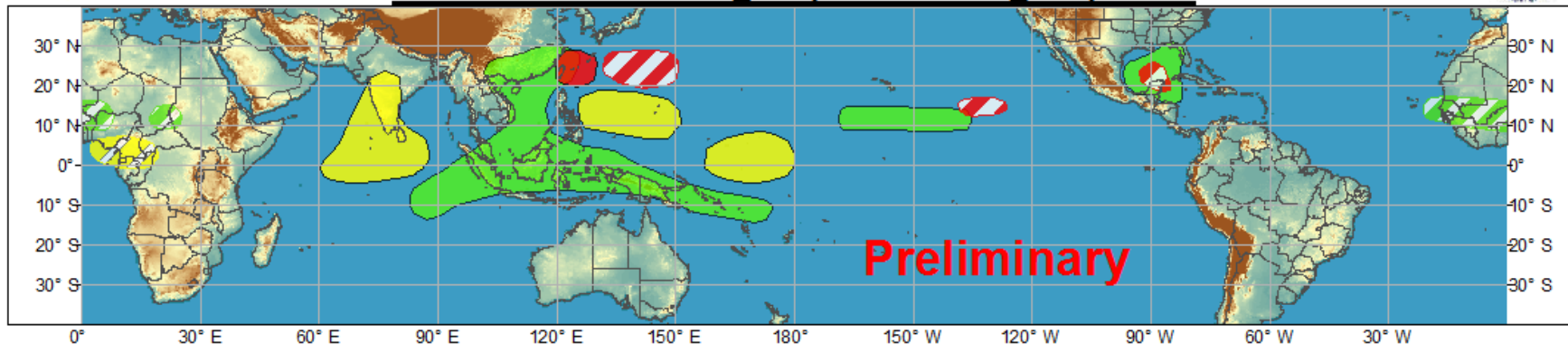
- Elevated odds for TC development in the western North Pacific in Week-1, mainly north of 20N.
- Elevated odds for TC development in the East Pacific near 135W.
- Slight chance of TC development in the southern Gulf of Mexico during Week-1.
- Moderate risk for tropical cyclogenesis in Week-2 in both the East Pacific and Atlantic basins.



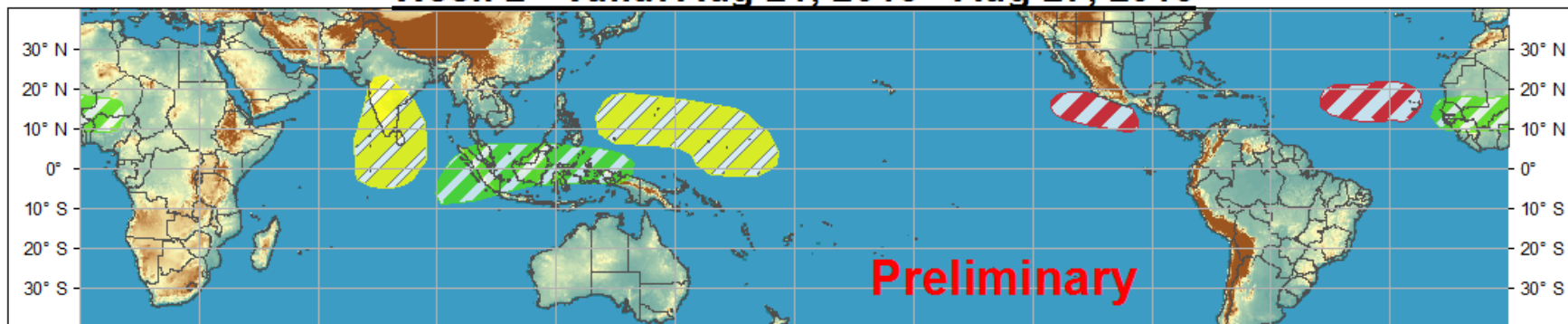
Global Tropics Hazards and Benefits Outlook - Climate Prediction Center



Week 1 - Valid: Aug 14, 2013 - Aug 20, 2013



Week 2 - Valid: Aug 21, 2013 - Aug 27, 2013



Confidence
High Moderate

- | | | |
|-----------------------------------|--|--|
| Tropical Cyclone Formation | | Development of a tropical cyclone that eventually reaches tropical storm/cyclone strength. |
| Above-average rainfall | | Weekly total rainfall in the upper third of the historical range. |
| Below-average rainfall | | Weekly total rainfall in the lower third of the historical range. |
| Above-normal temperatures | | 7-day mean temperatures in the upper third of the historical range. |
| Below-normal temperatures | | 7-day mean temperatures in the lower third of the historical range. |

Produced: 08/13/2013

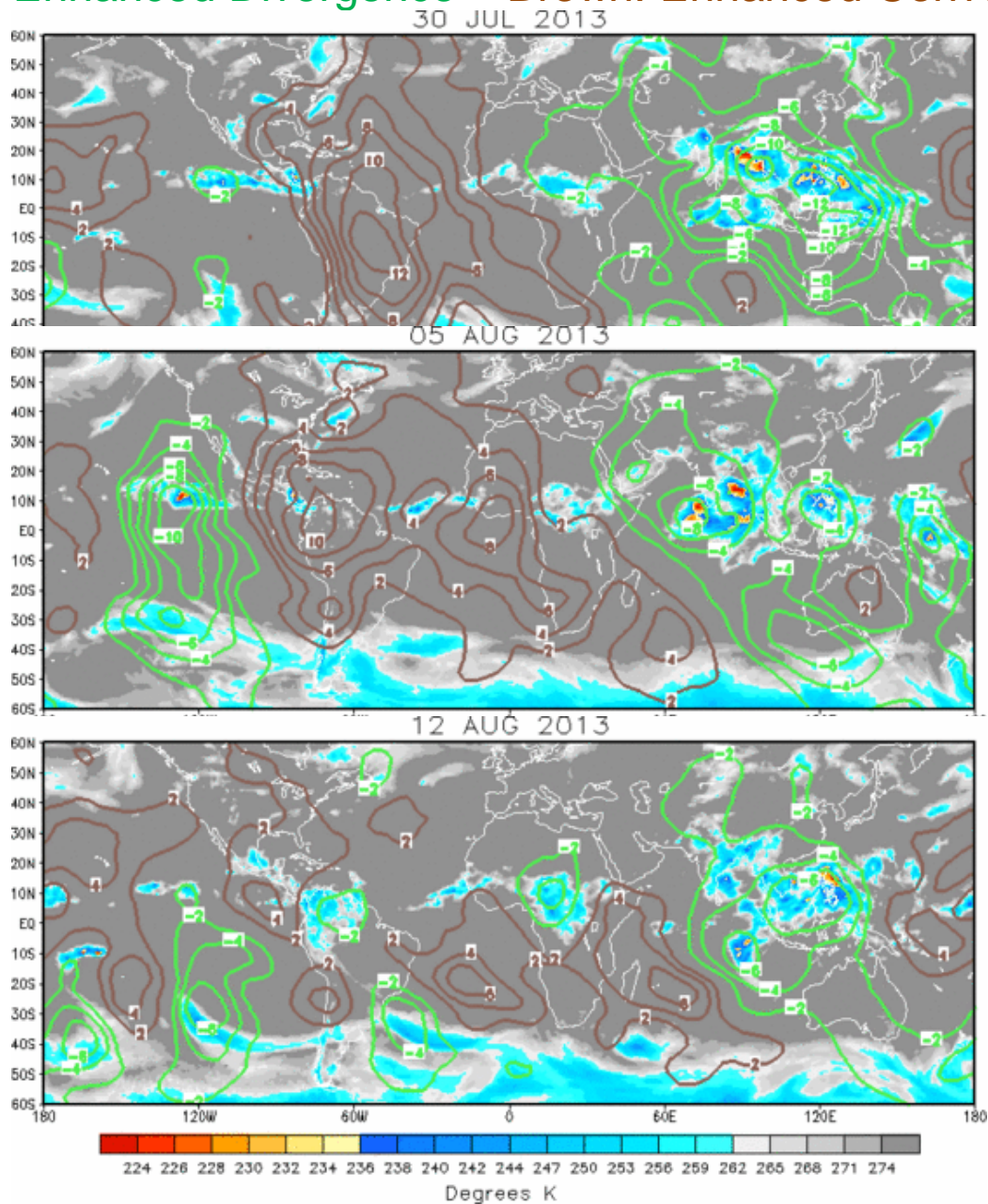
Forecaster: Baxter

Product is updated once per week. The product targets broad scale conditions integrated over a 7-day period for US interests only. Consult your local responsible forecast agency.



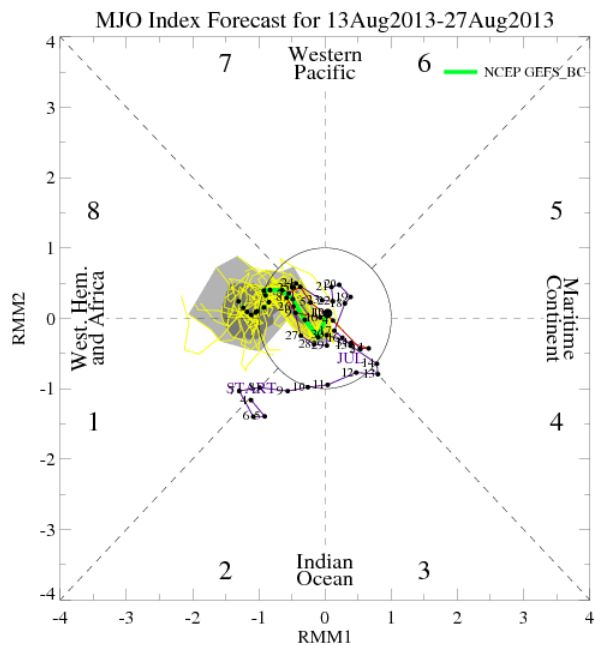
IR Satellite & 200-hpa Velocity Potential Anomalies

Green: Enhanced Divergence Brown: Enhanced Convergence

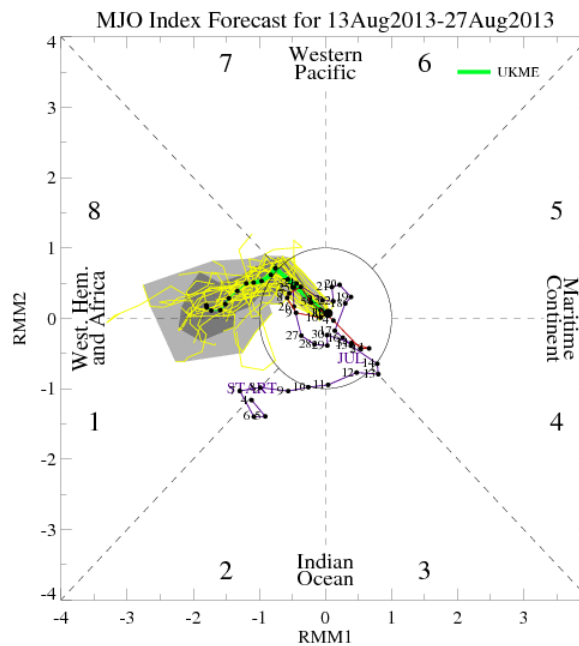


MJO Observation/Forecast

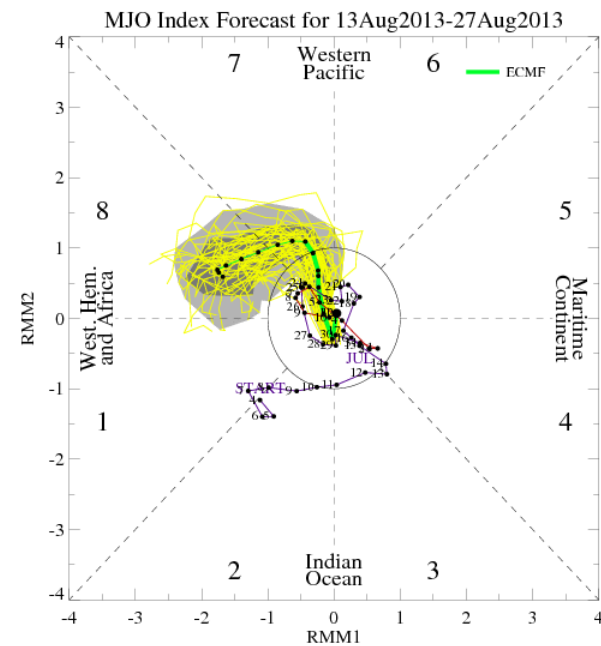
GFS



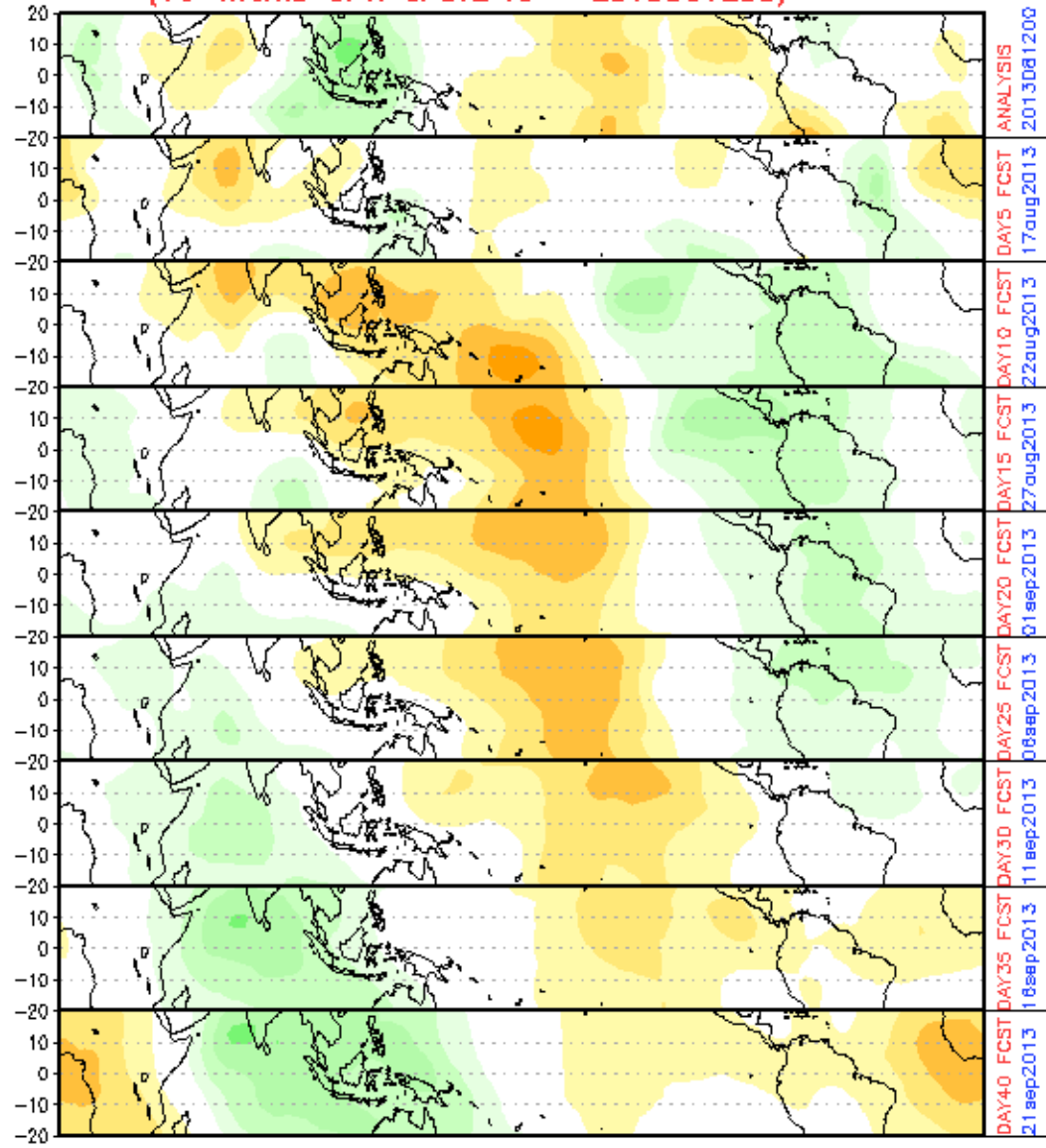
UKMET



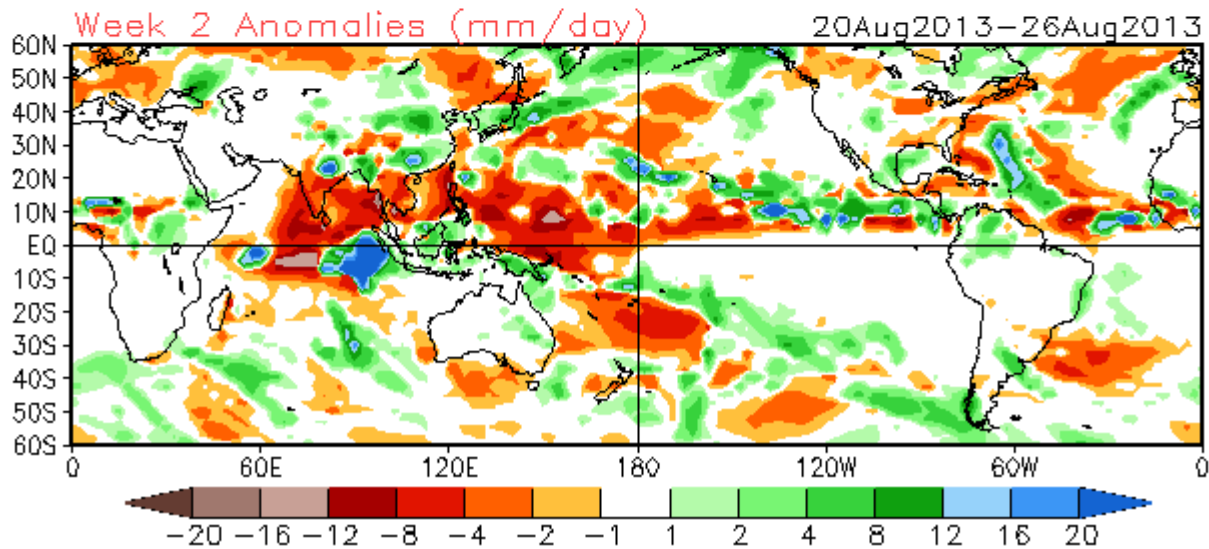
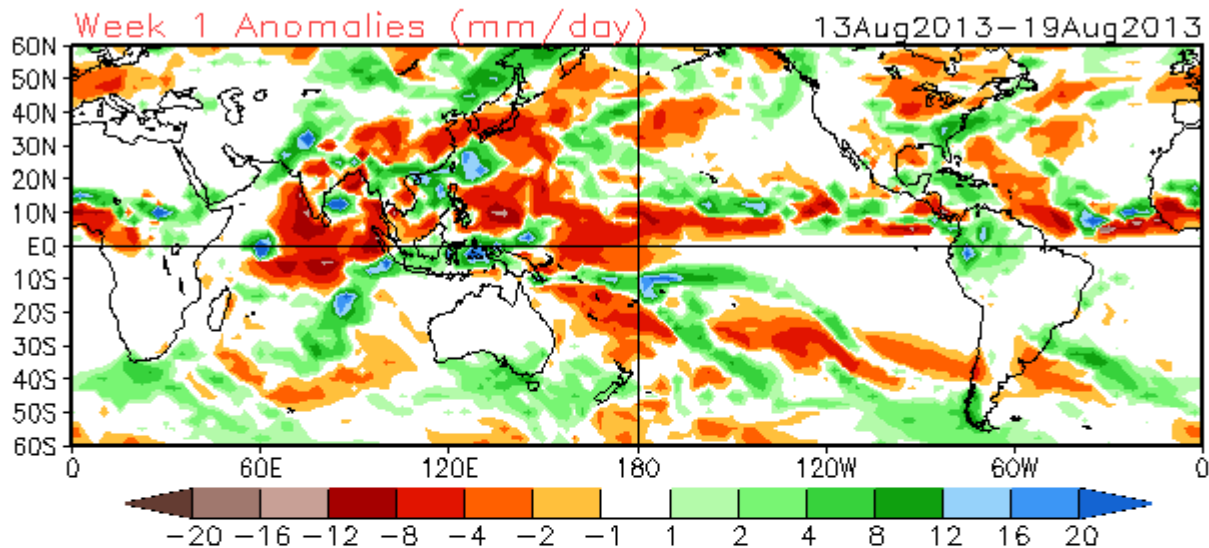
ECMWF

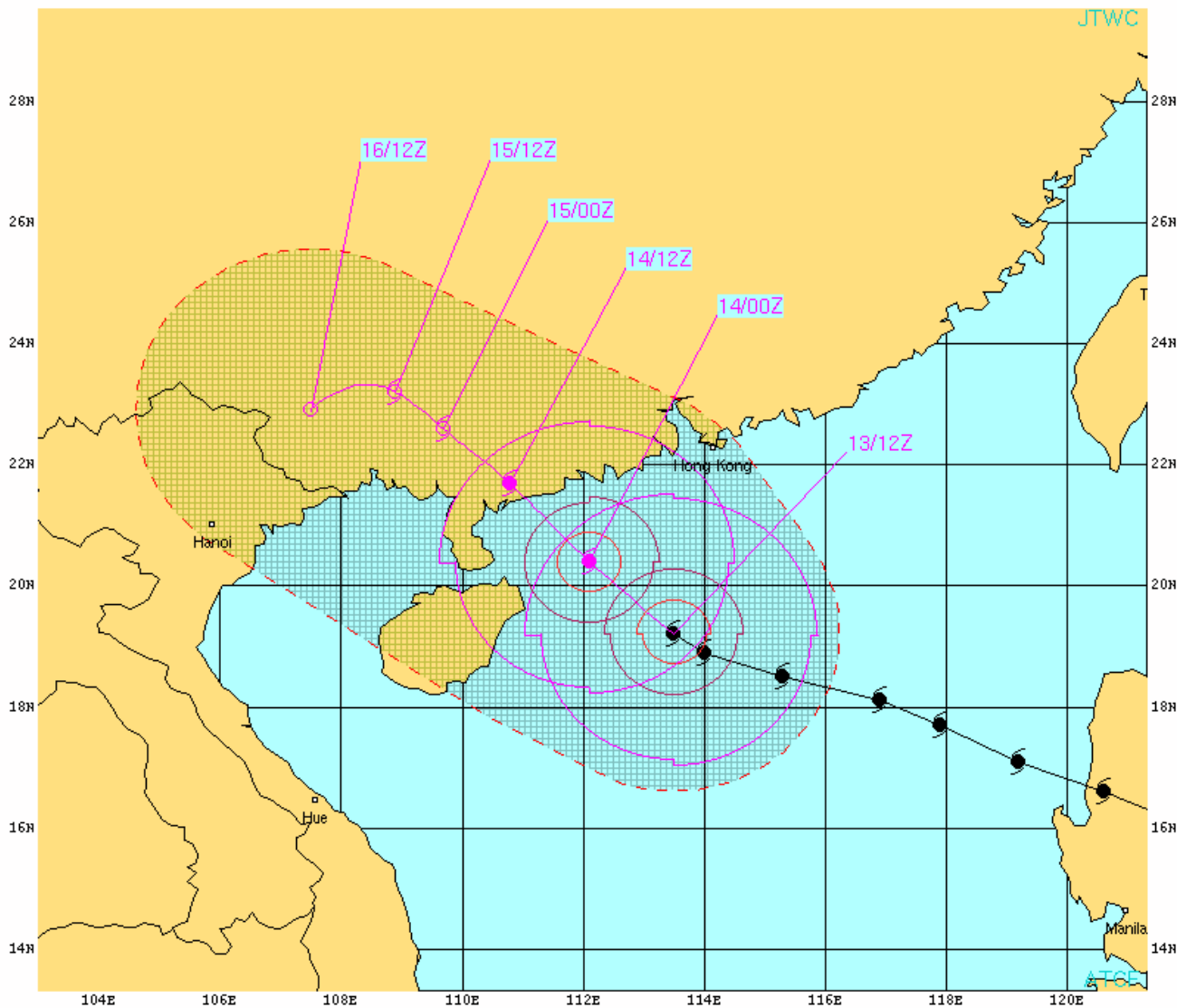


CHI 200 hPa 40-DAY forecast (00z12aug2013-21sep2013)
(16-memb OPR CFSv2 IC = 2013081200)



CFSv2 Weeks 1 & 2 Precipitation
16 Member Ensemble Mean Forecast from 12Aug2013





TYPHOON 11W (UTOR) WARNING #20
 WTPH31 PGTW 131500
 131200Z POSIT: NEAR 19.2N 113.5E
 MOVING 300 DEGREES TRUE AT 06 KNOTS
 MAXIMUM SIGNIFICANT WAVE HEIGHT: 41 FEET
 13/12Z, WINDS 095 KTS, GUSTS TO 115 KTS
 14/00Z, WINDS 090 KTS, GUSTS TO 110 KTS
 14/12Z, WINDS 070 KTS, GUSTS TO 085 KTS
 15/00Z, WINDS 045 KTS, GUSTS TO 055 KTS
 15/12Z, WINDS 035 KTS, GUSTS TO 045 KTS
 16/12Z, WINDS 020 KTS, GUSTS TO 030 KTS

CPA TO:	NM	DTG
DA HANG	340	13/21Z
HONG KONG	153	14/00Z
HANOI	144	16/12Z

BEARING AND DISTANCE	DIR	DIST (NM)	TAU (HRS)
DA HANG	022	370	24
HANOI	080	277	24
HONG_KONG	260	193	24

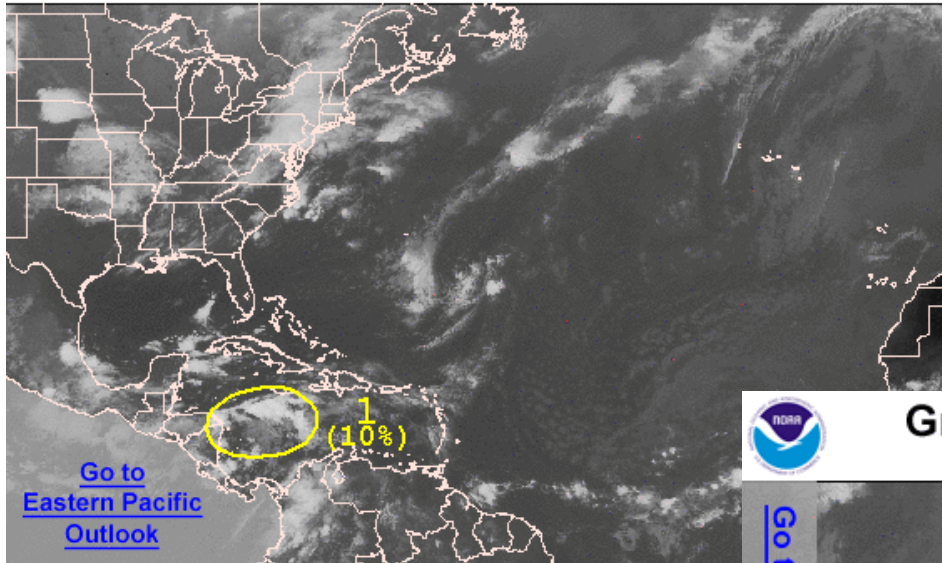
○ LESS THAN 34 KNOTS
 ◉ 34-63 KNOTS
 ◐ MORE THAN 63 KNOTS
 ● PAST 6 HOURLY CYCLONE POSITS IN BLACK
 ○ FORECAST CYCLONE POSITS IN COLOR





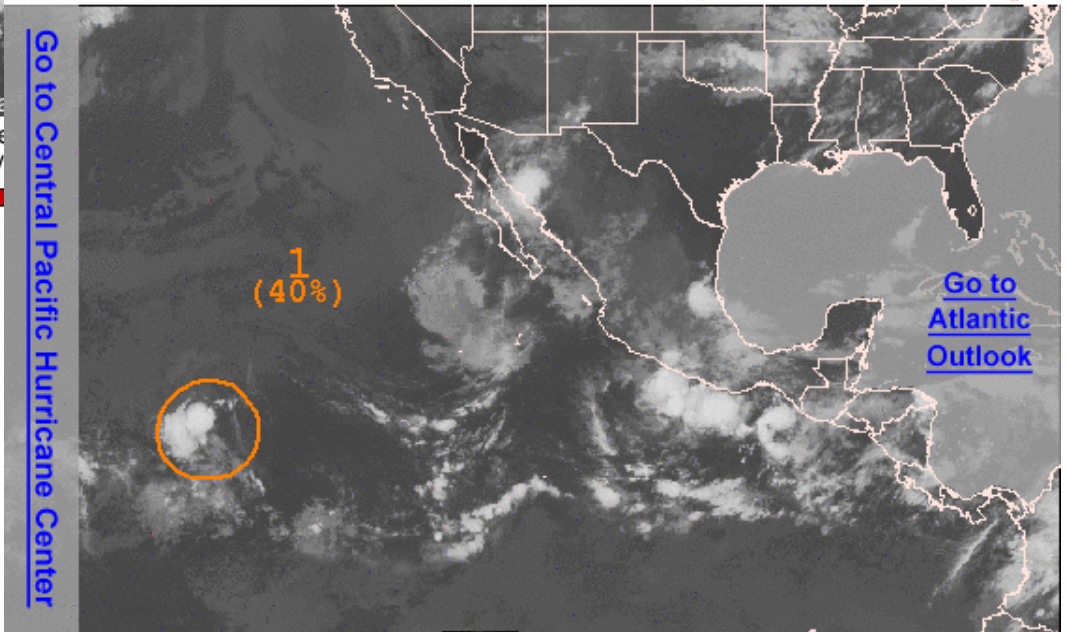
Graphical Tropical Weather Outlook

National Hurricane Center Miami, Florida



Graphical Tropical Weather Outlook

National Hurricane Center Miami, Florida



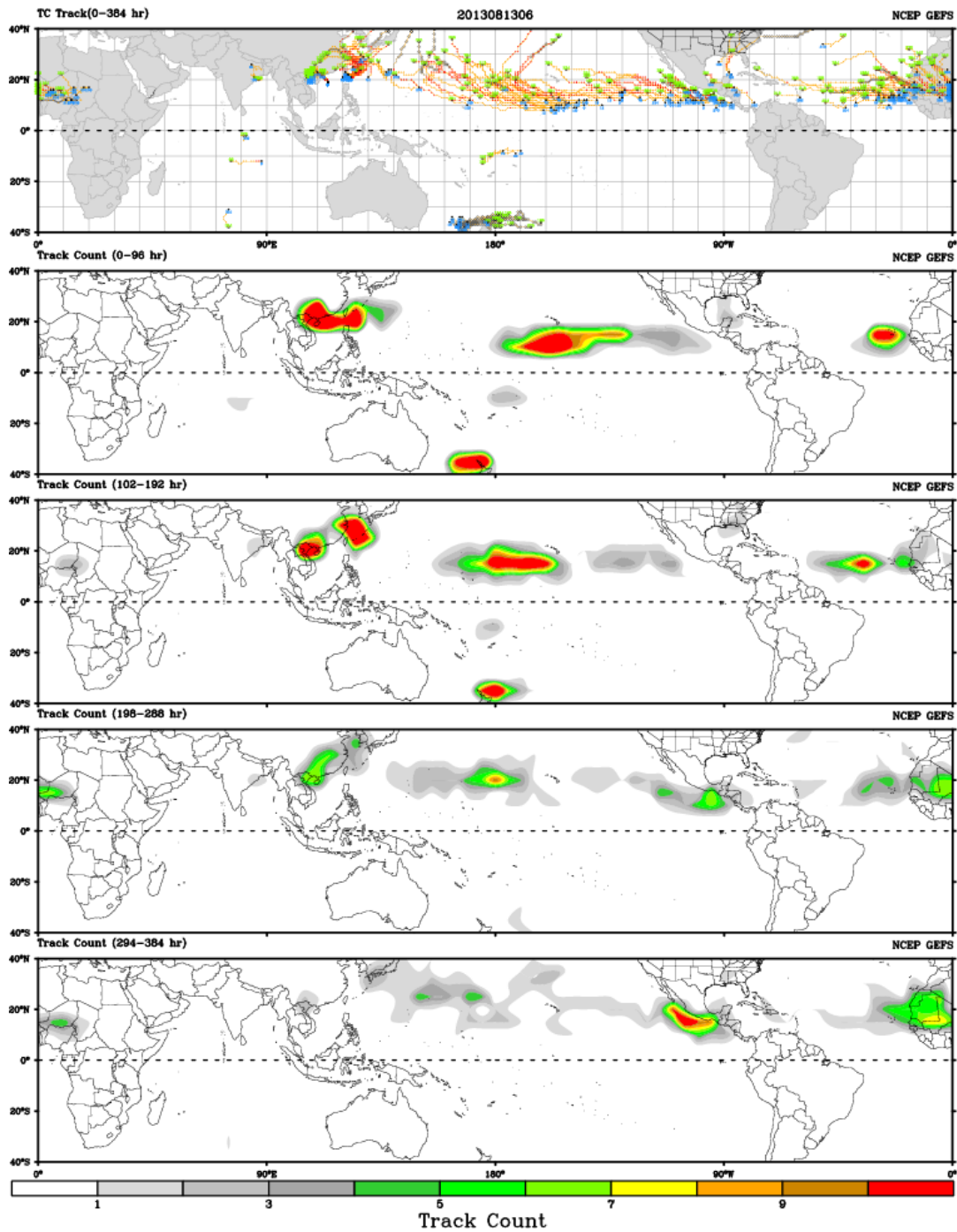
500 AM PDT TUE AUG 13 2013

Satellite Image: 0352 AM PDT

Outlined areas denote current position of systems discussed in the Tropical Weather Outlook. Color indicates probability of tropical cyclone formation within 48 hours.

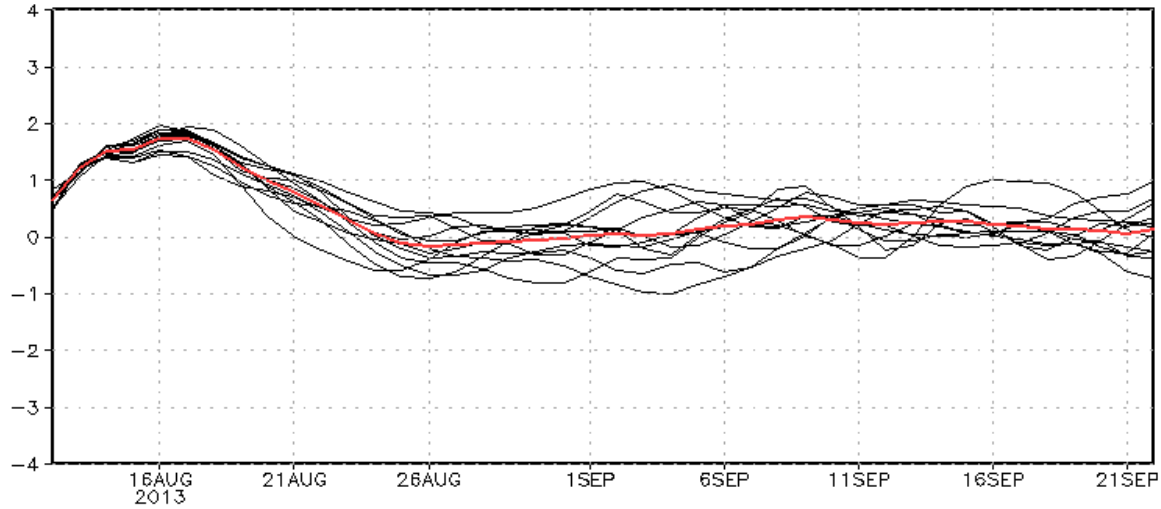
Yellow	Low <30%	Orange	Medium 30-50%	Red	High >50%
--------	----------	--------	---------------	-----	-----------

CWB TC Tracker for NCEP GEFS (Fuzzy_AllCriteria)

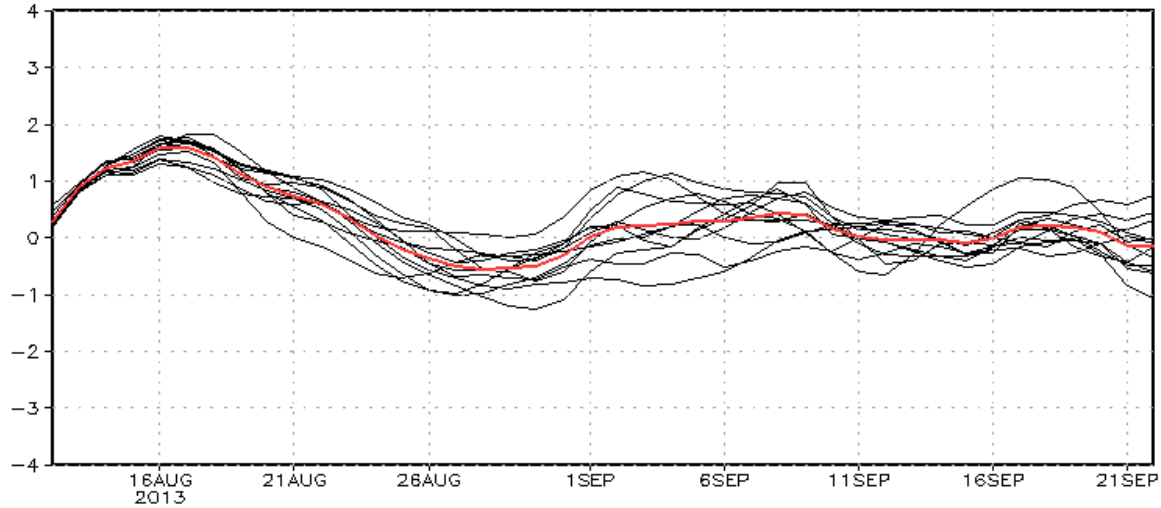


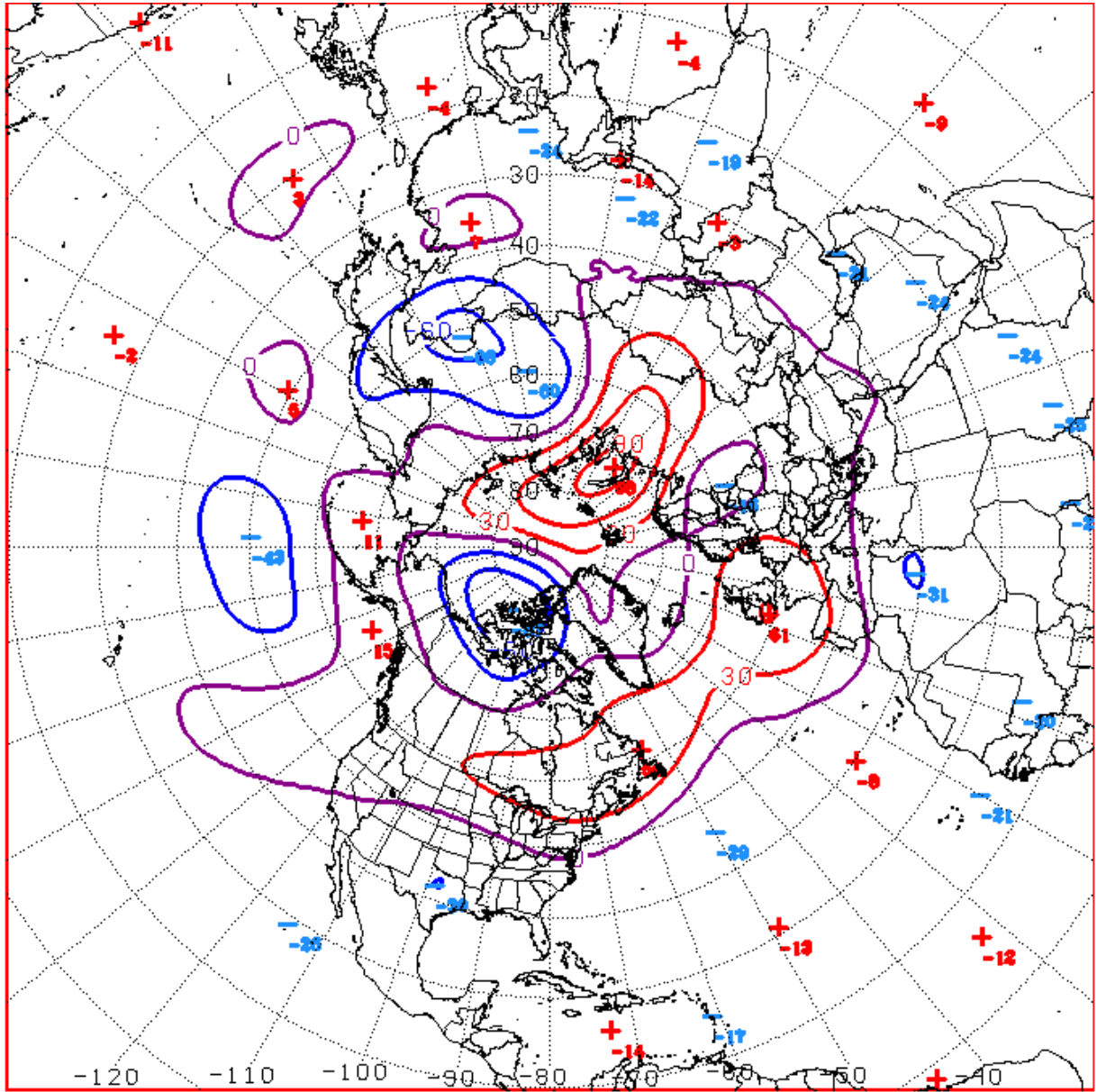
CFSv2 Teleconnection Forecast

NAO CFSv2 Forecast

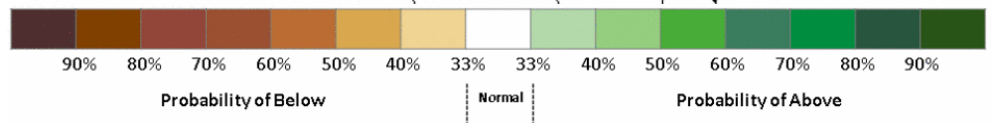
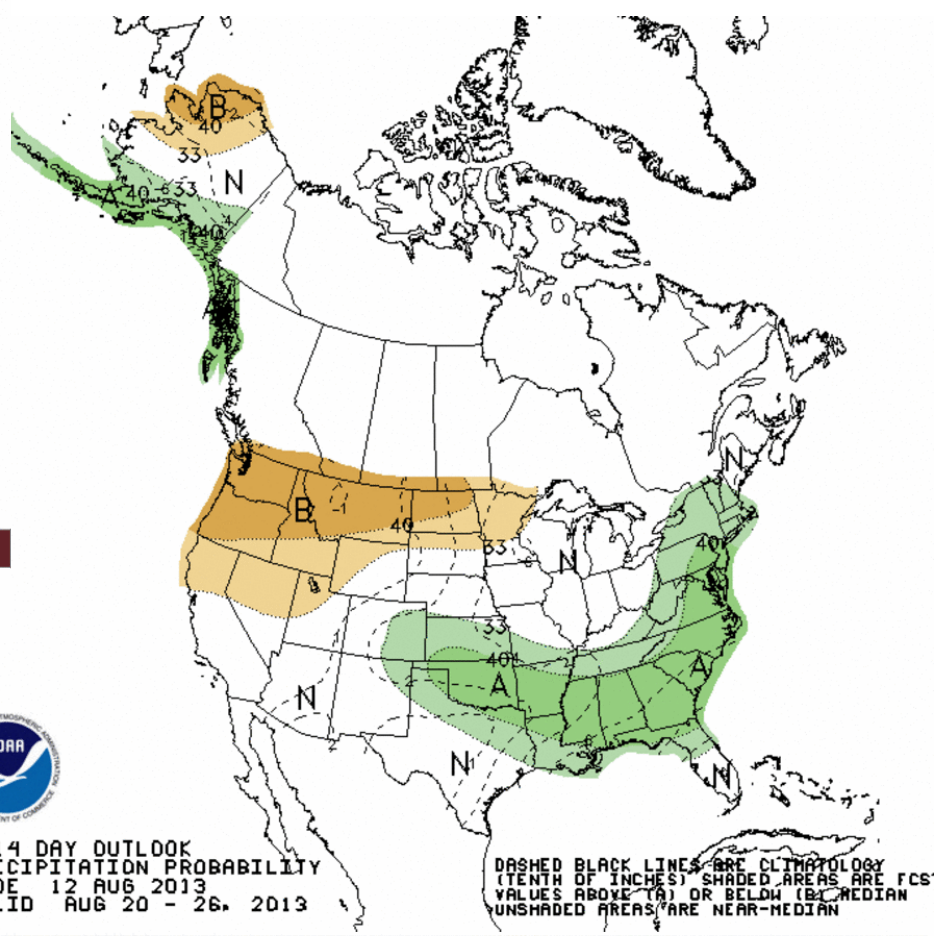
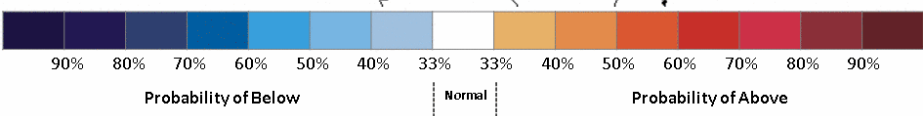
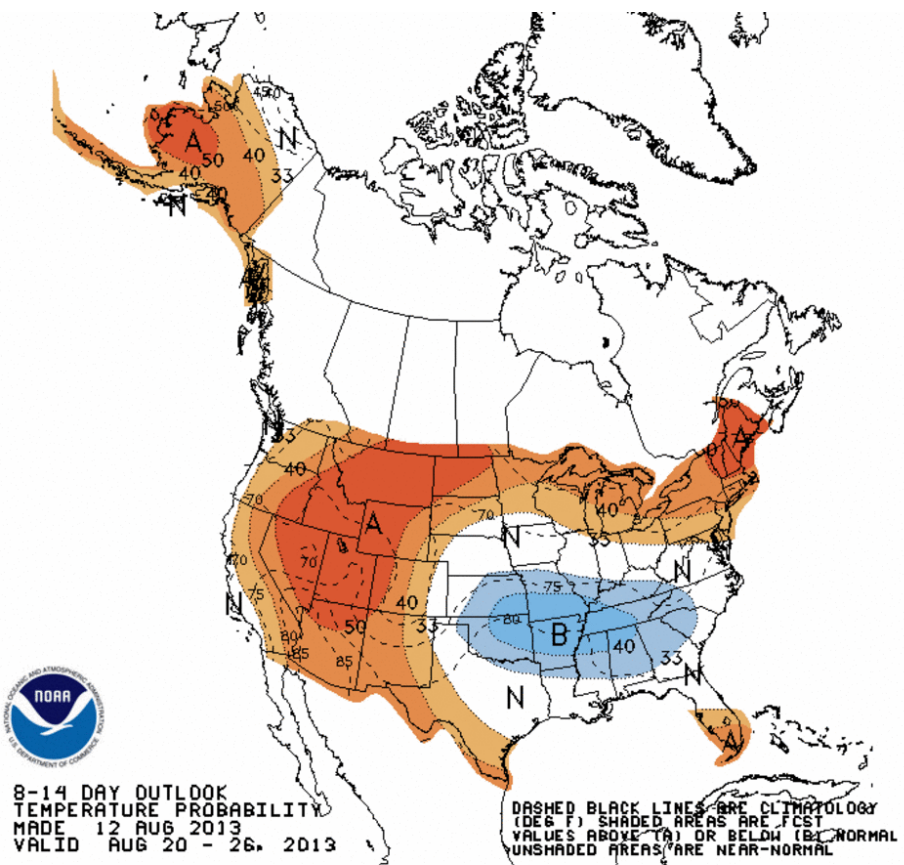


NAO CFSv2 Bias-Corrected Fcst





D+11 500 MB ANOMALIES FROM 00Z ECMM
CPC MAP MADE AUG 13 2013 1039 UTC CNTD AUG 24 2013

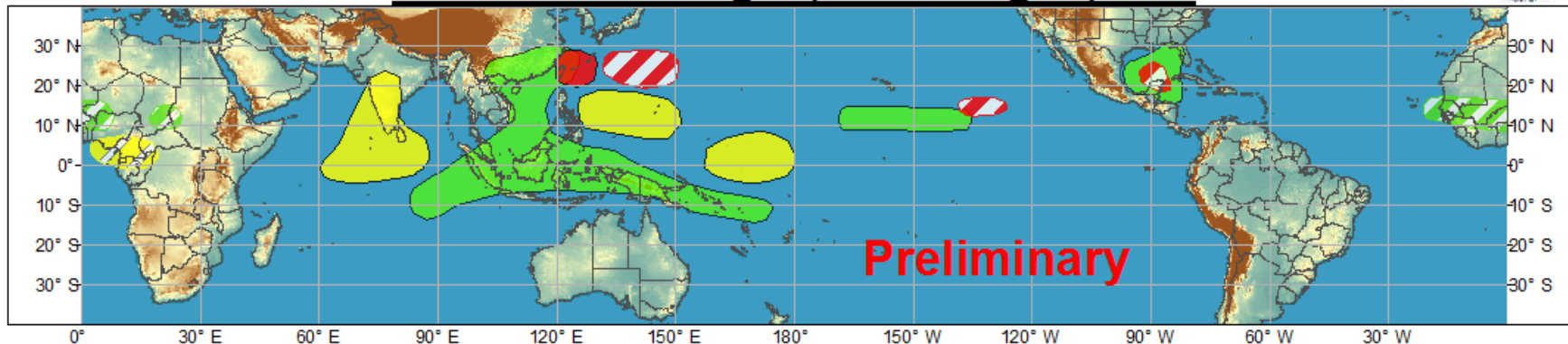




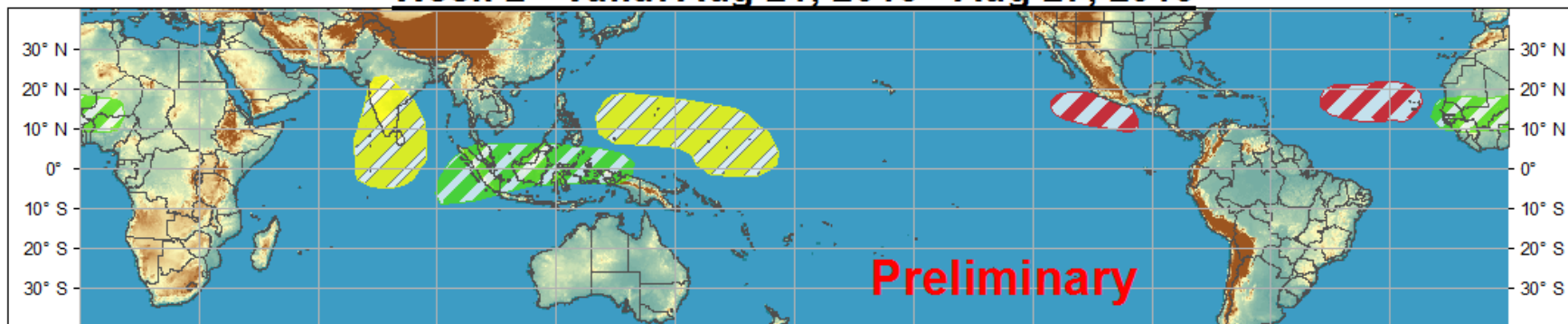
Global Tropics Hazards and Benefits Outlook - Climate Prediction Center



Week 1 - Valid: Aug 14, 2013 - Aug 20, 2013



Week 2 - Valid: Aug 21, 2013 - Aug 27, 2013



Produced: 08/13/2013

Forecaster: Baxter

	Confidence		
	High	Moderate	
Tropical Cyclone Formation			Development of a tropical cyclone that eventually reaches tropical storm/cyclone strength.
Above-average rainfall			Weekly total rainfall in the upper third of the historical range.
Below-average rainfall			Weekly total rainfall in the lower third of the historical range.
Above-normal temperatures			7-day mean temperatures in the upper third of the historical range.
Below-normal temperatures			7-day mean temperatures in the lower third of the historical range.

Product is updated once per week. The product targets broad scale conditions integrated over a 7-day period for US interests only. Consult your local responsible forecast agency.

