

Global Tropics Hazards And Benefits Outlook

September 10, 2013

Steve Baxter

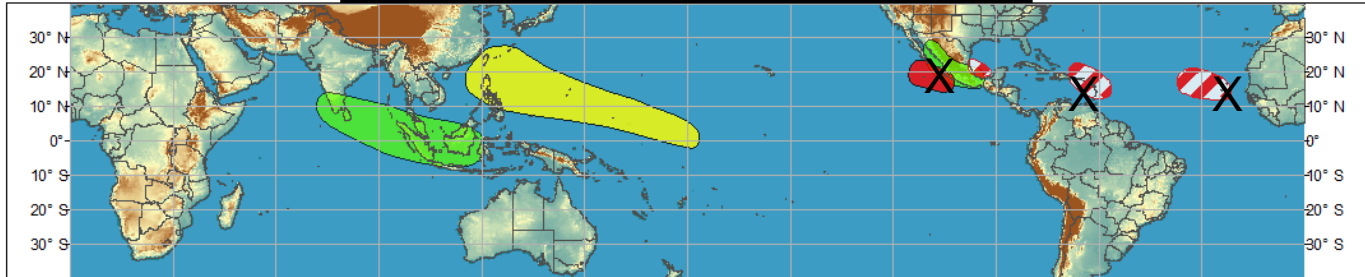
Outline

1. Review of Recent Conditions
2. Synopsis of Climate Modes
3. GTH Outlook and Forecast Discussion

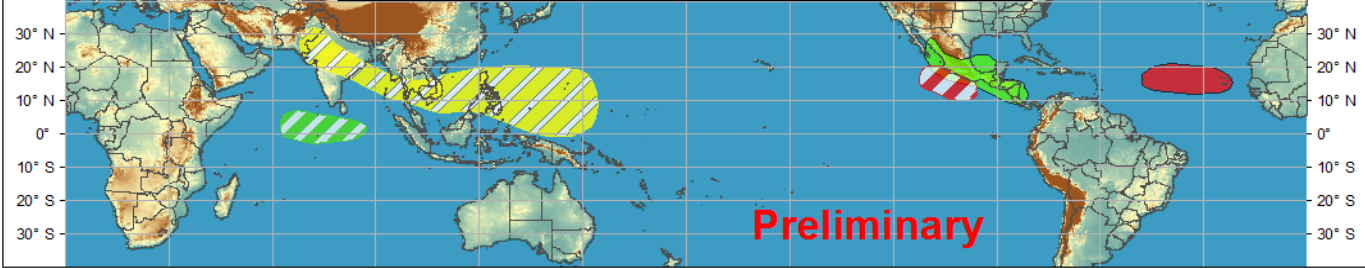
Outlook Review



Week 1 - Valid: Sep 04, 2013 - Sep 10, 2013

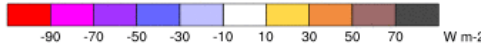
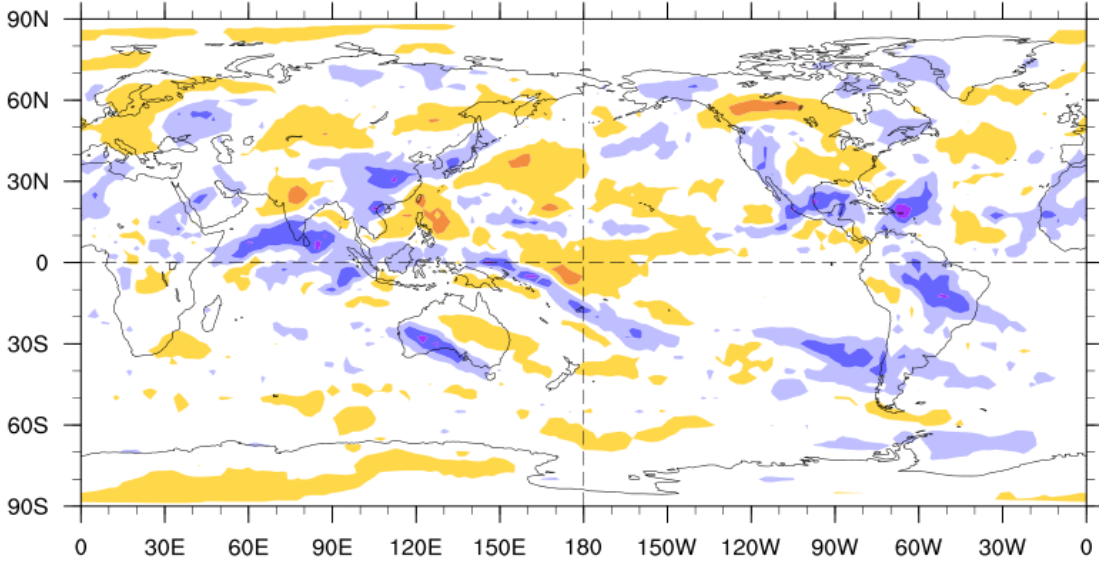


Week 2 - Valid: Sep 04, 2013 - Sep 10, 2013



7-Day Average OLR Anomaly

2013/09/02 - 2013/09/08



Cool shading
More clouds/rain

Warm shading
Less clouds/rain

Synopsis of Climate Modes

ENSO:

- ENSO-neutral conditions are favored to continue through late boreal autumn 2013.

MJO and other subseasonal tropical variability:

- The MJO has remained active over the past week, propagating from the Western Hemisphere to the Indian Ocean.
- Model MJO index forecasts indicate a weakening MJO signal in Week-1, followed by some strengthening with the convective phase over the western Pacific.

Tropics:

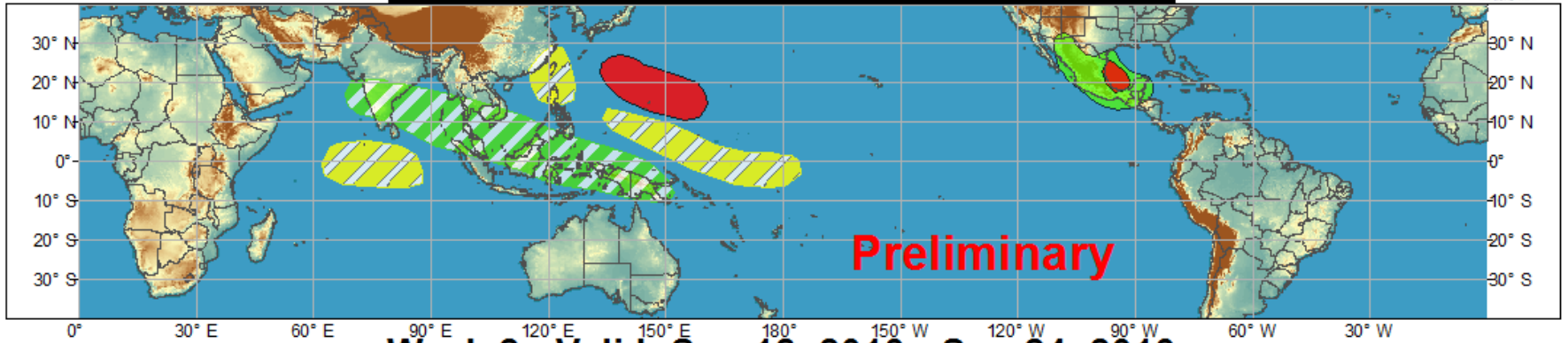
- Elevated odds for TC development in the western North Pacific during Week-1, with two TCs possible.
- High chances for TC development in the Bay of Campeche during Week-1.
- Moderate confidence for TC development in Week-2 in the western North Pacific, supported by the expected evolution of the MJO.



Global Tropics Hazards and Benefits Outlook - Climate Prediction Center



Week 1 - Valid: Sep 11, 2013 - Sep 17, 2013



Week 2 - Valid: Sep 18, 2013 - Sep 24, 2013



Confidence
High Moderate

- | | | |
|-----------------------------------|--|--|
| Tropical Cyclone Formation | | Development of a tropical cyclone that eventually reaches tropical storm/cyclone strength. |
| Above-average rainfall | | Weekly total rainfall in the upper third of the historical range. |
| Below-average rainfall | | Weekly total rainfall in the lower third of the historical range. |
| Above-normal temperatures | | 7-day mean temperatures in the upper third of the historical range. |
| Below-normal temperatures | | 7-day mean temperatures in the lower third of the historical range. |

Produced: 09/10/2013

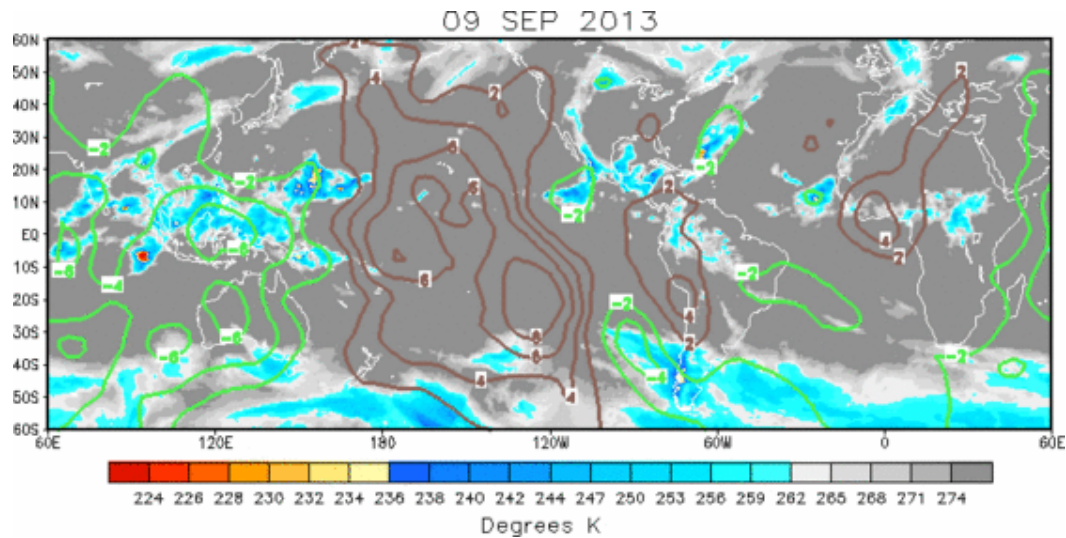
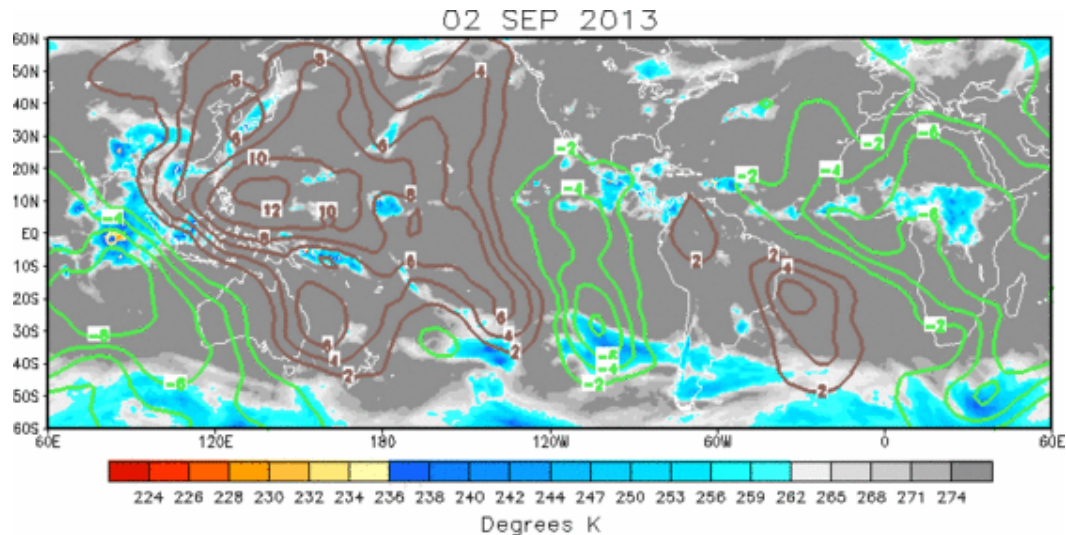
Forecaster: Baxter

Product is updated once per week. The product targets broad scale conditions integrated over a 7-day period for US interests only. Consult your local responsible forecast agency.



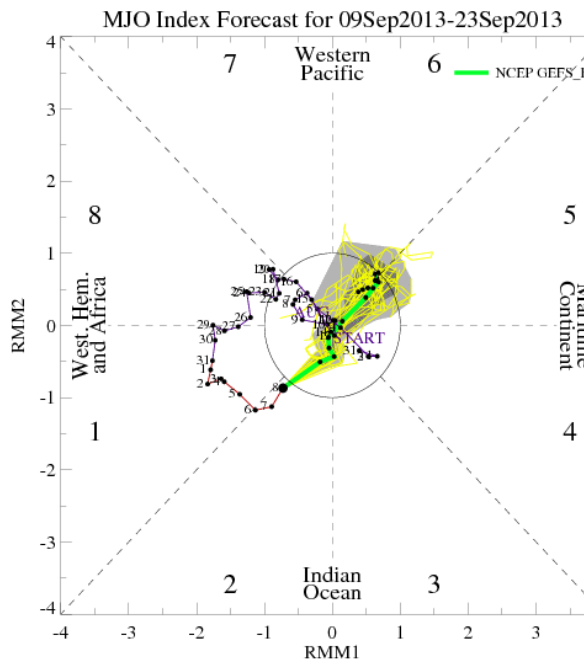
IR Satellite & 200-hpa Velocity Potential Anomalies

Green: Enhanced Divergence Brown: Enhanced Convergence

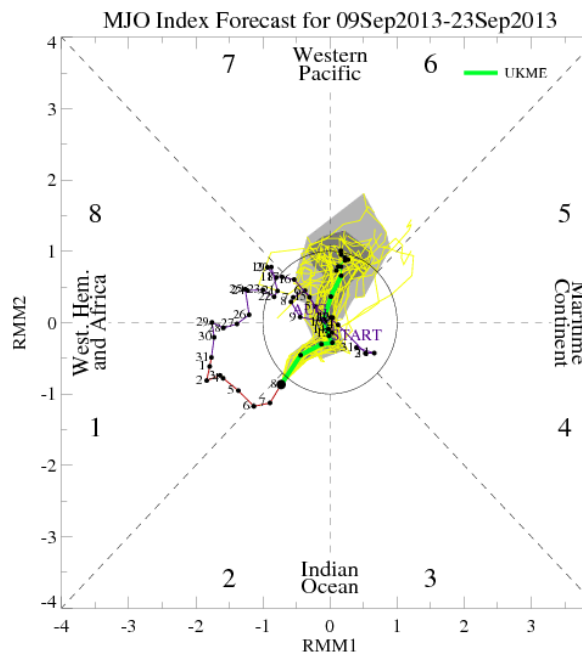


MJO Observation/Forecast

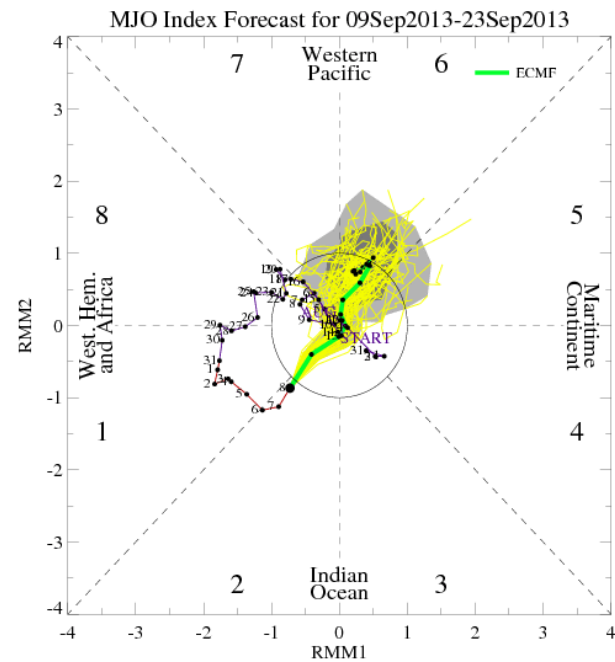
GFS

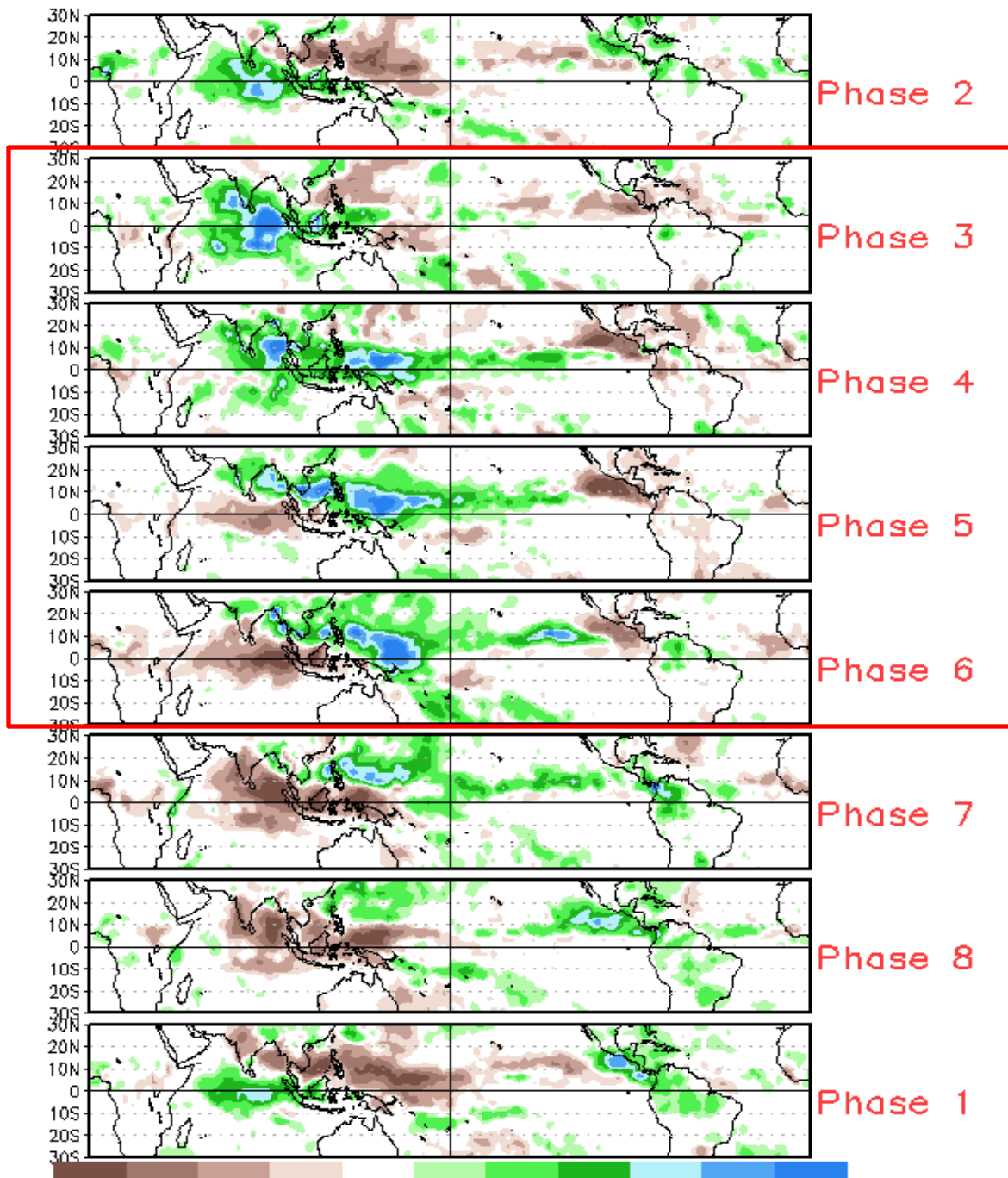


UKMET

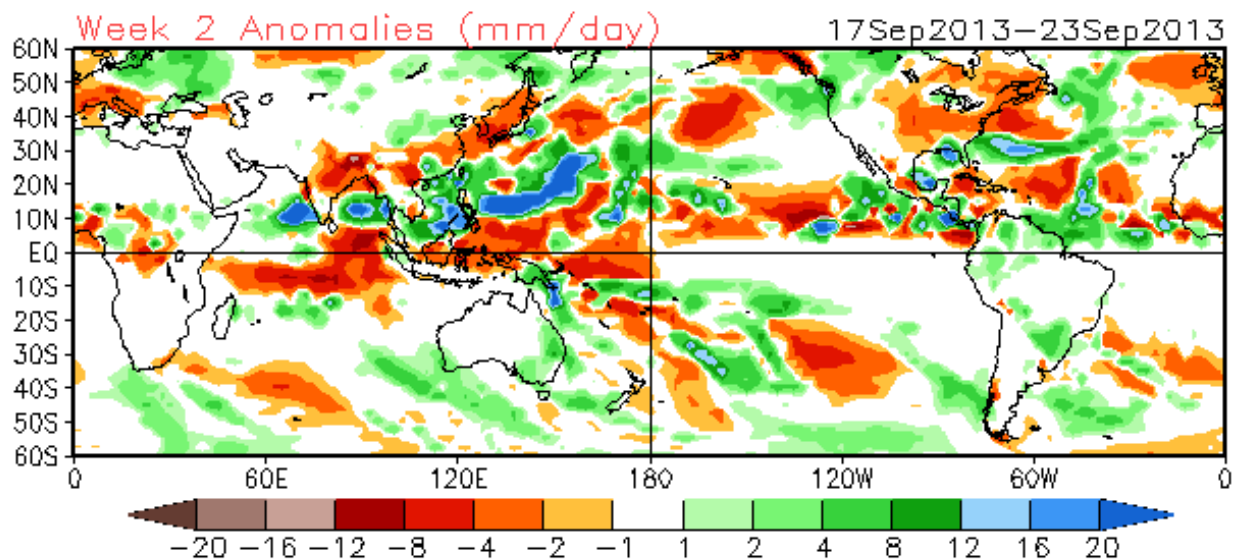
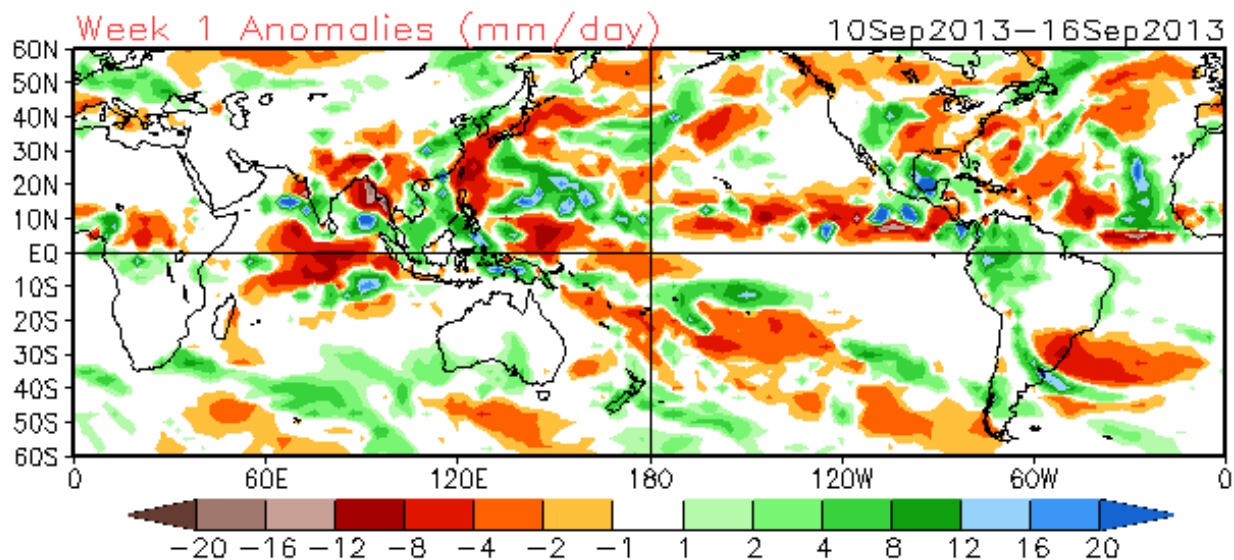


ECMWF

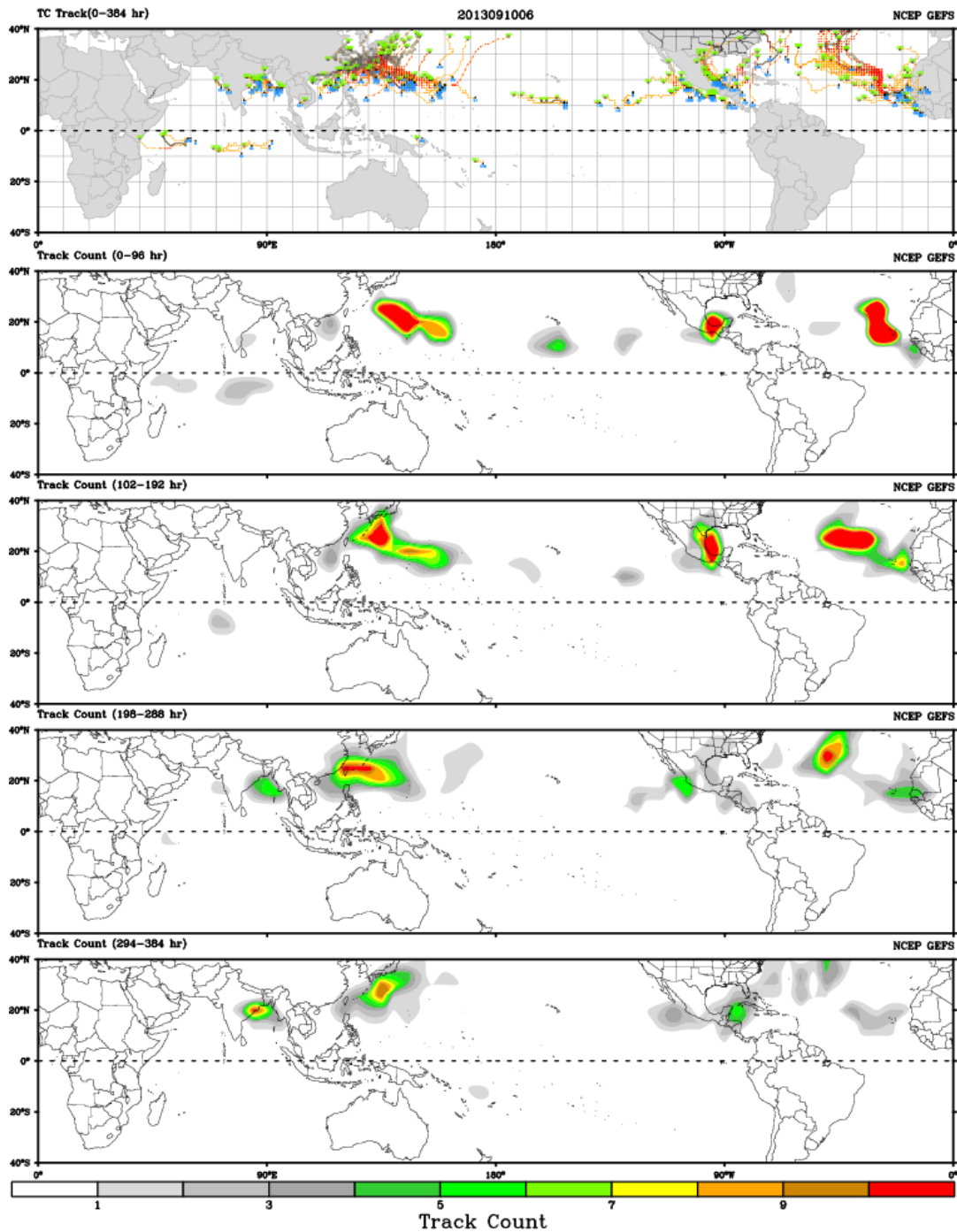




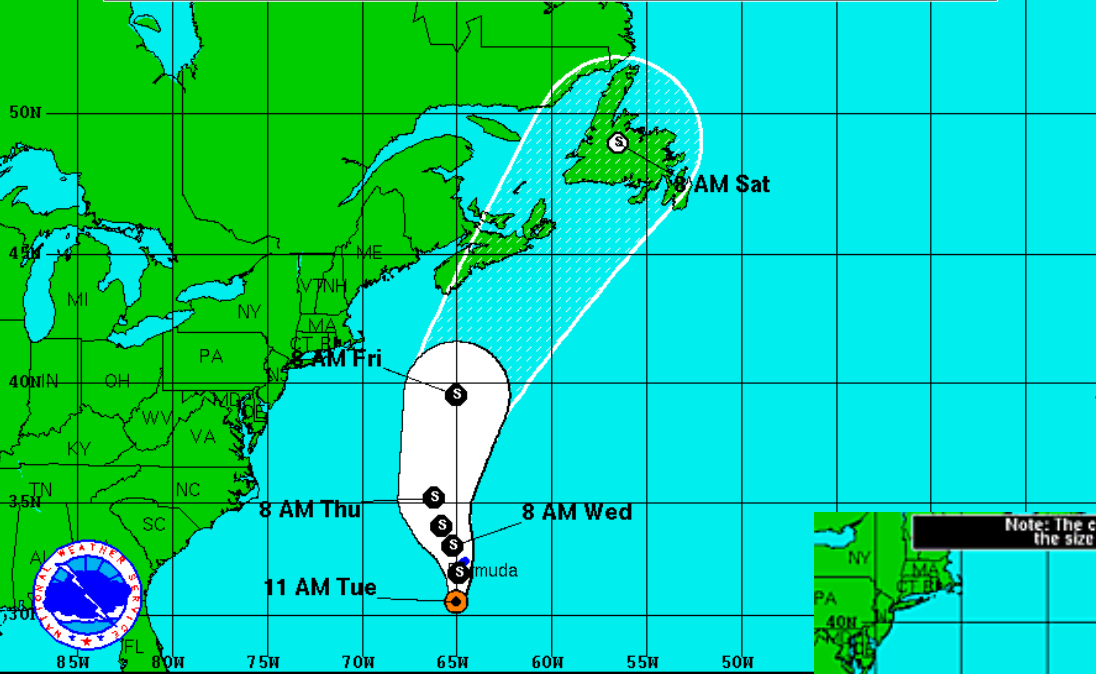
CFSv2 Weeks 1 & 2 Precipitation
16 Member Ensemble Mean Forecast from 09Sep2013



CWB TC Tracker for NCEP GEFS (Fuzzy_AllCriteria)

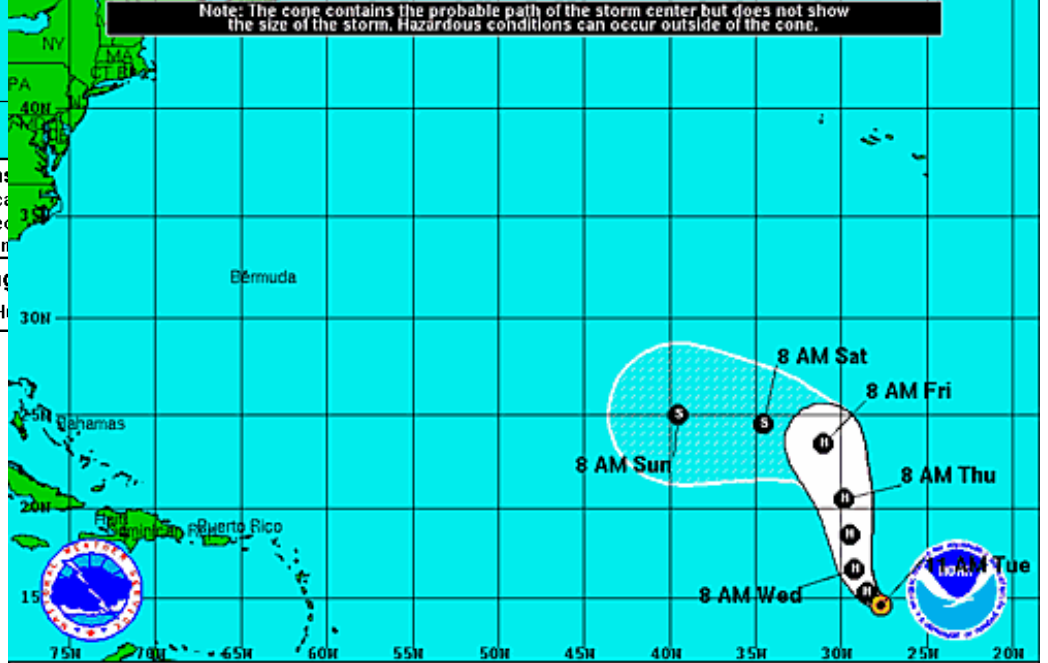


Note: The cone contains the probable path of the storm center but does not show the size of the storm. Hazardous conditions can occur outside of the cone.

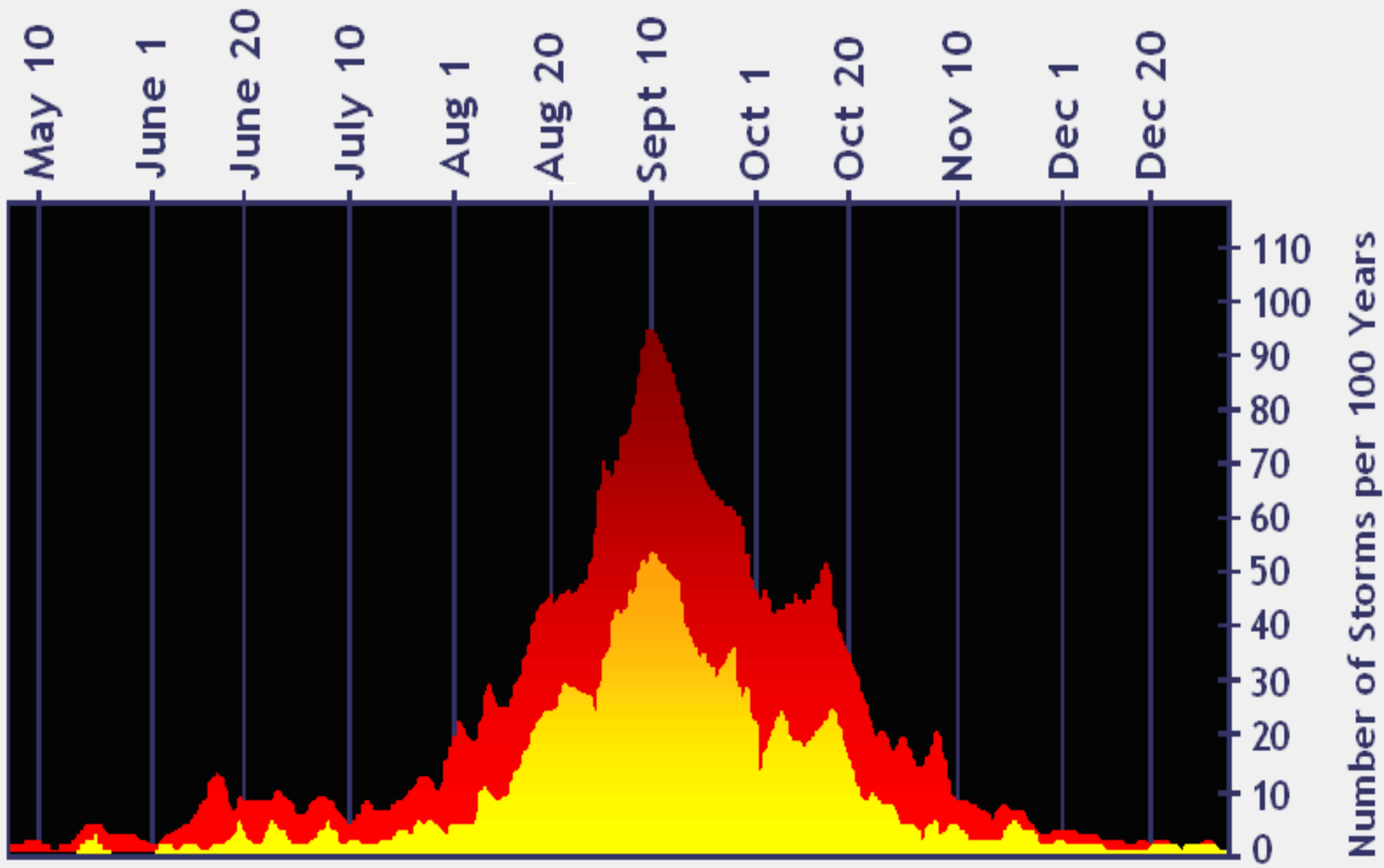




Tropical Storm Gabrielle Tuesday September 10, 2013 11 AM EDT Advisory 8 NWS National Hurricane Center	Current Information: ● Center Location 30.6 N 65.0 W Max Sustained Wind 40 mph Movement N at 12 mph	Forecast: ● Tropical Cyclone ● Sustained Winds 39-73 mph ● Post-Tropical Storm
Potential Track Area: Day 1-3 Day 4-5	Watches: Hurricane Trop.Storm	Warnings: Hurricane Trop.Storm

Note: The cone contains the probable path of the storm center but does not show the size of the storm. Hazardous conditions can occur outside of the cone.

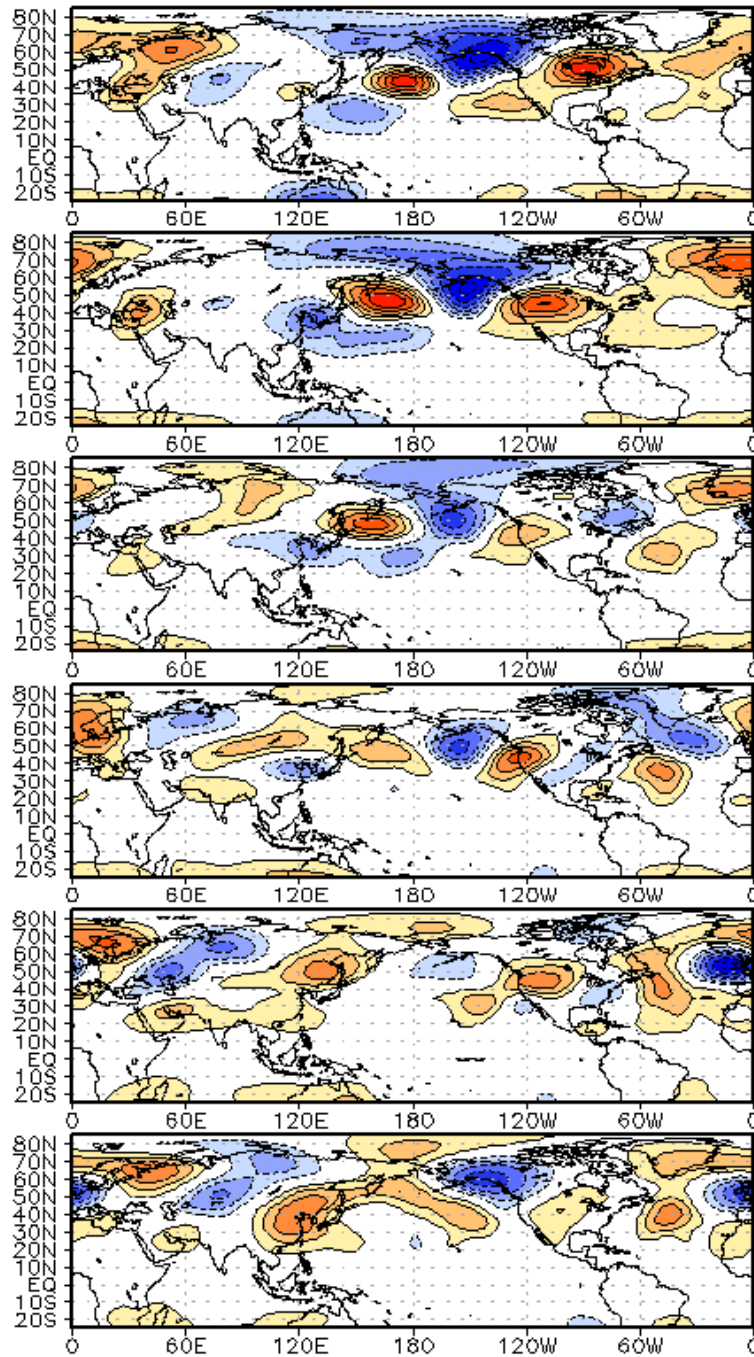


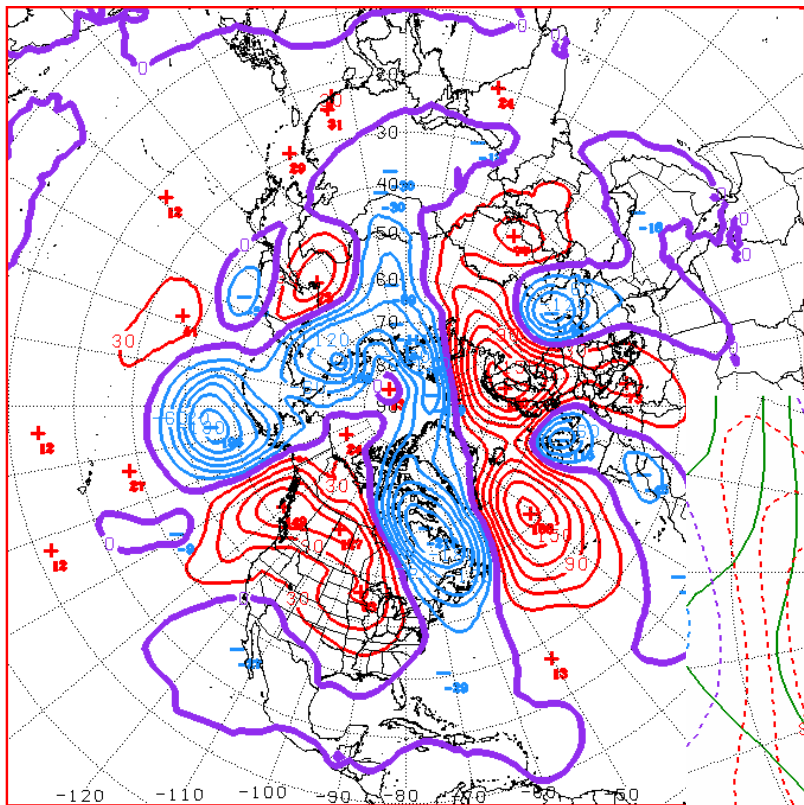
Tropical Storm Humberto Tuesday September 10, 2013 11 AM EDT Advisory 8 NWS National Hurricane Center	Current Information: ● Center Location 14.6 N 27.7 W Max Sustained Wind 65 mph Movement WNW at 9 mph	Forecast Positions: ● Tropical Cyclone ○ Post-Tropical Sustained WInds: D < 39 mph S 39-73 mph H 74-110 mph M > 110mph
Potential Track Area: Day 1-3 Day 4-5	Watches: Hurricane Trop.Storm	Warnings: Hurricane Trop.Storm



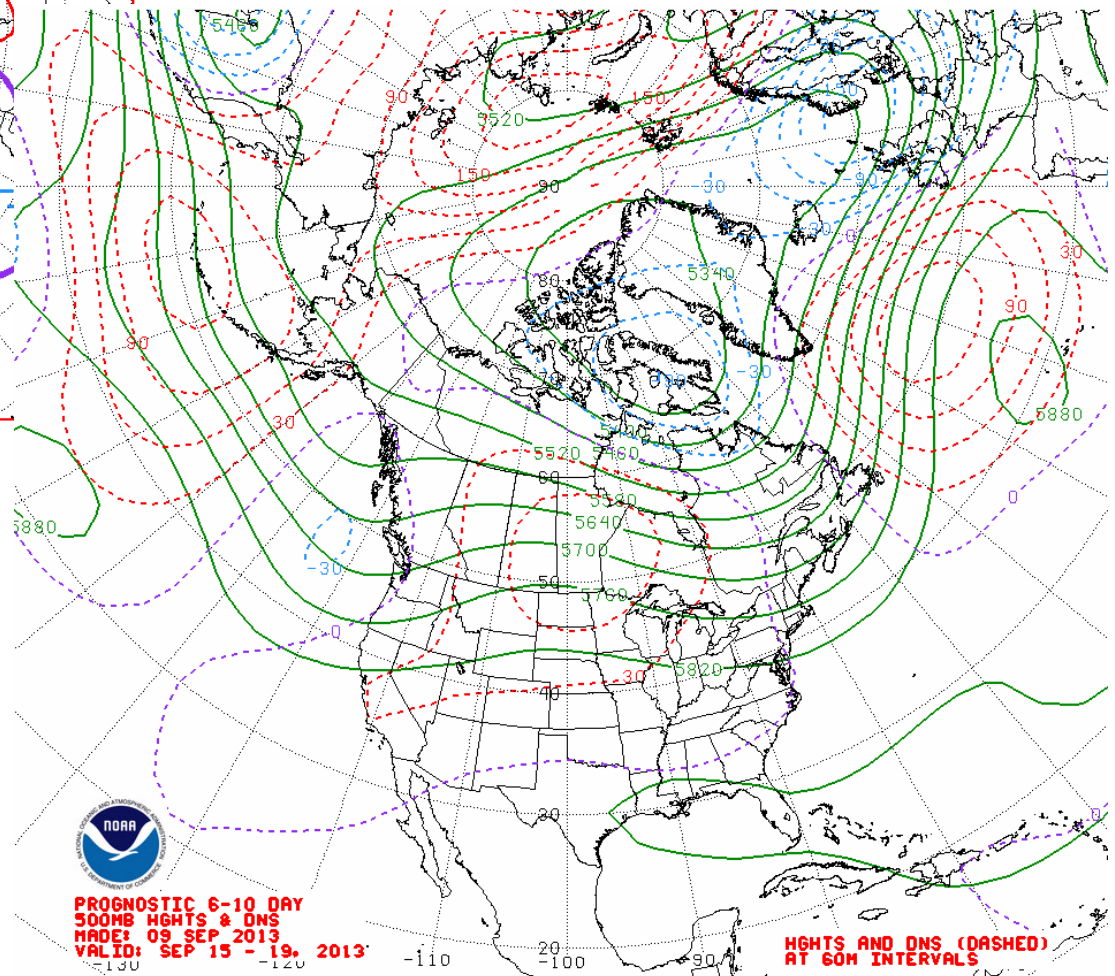
 Hurricanes and Tropical Storms
 Hurricanes

WHMJO Phase 2 z200 Lagged Composite (aso)



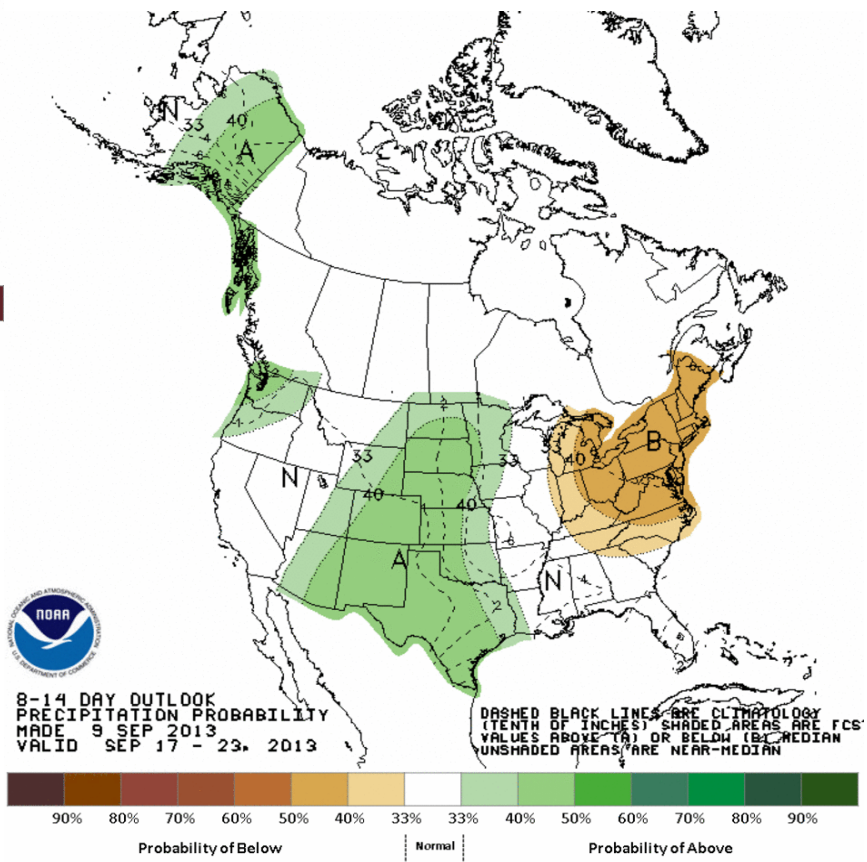
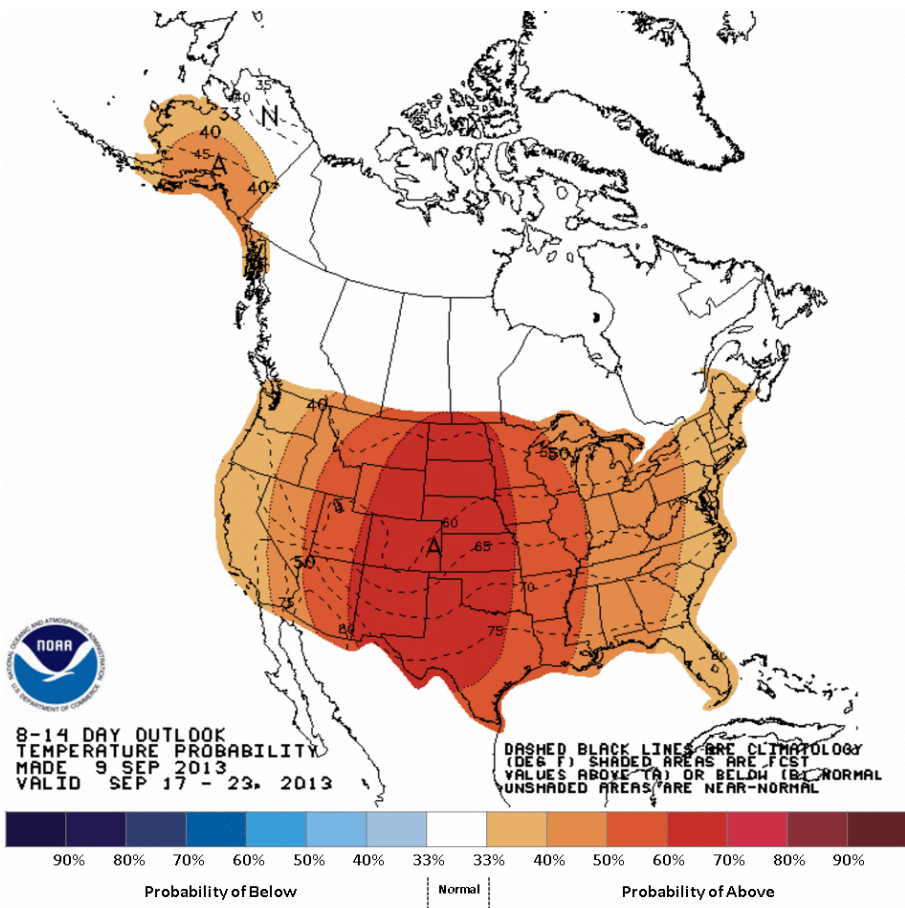


D-3 OBSVD 500MB 50 MEAN OBSVD DNS
 CPC MAP MADE 09 10 2013 CNTD 2013/09/07



**PROGNOSTIC 6-10 DAY
 500MB HGHTS & DNS
 MADE: 09 SEP 2013
 VALID: SEP 15 - 19, 2013**

**HGHTS AND DNS (DASHED)
 AT 60M INTERVALS**

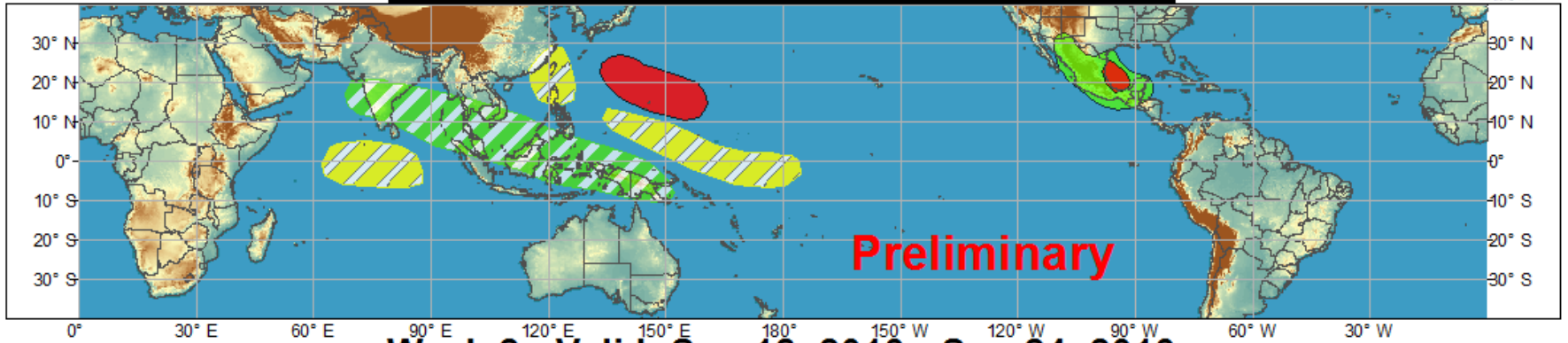




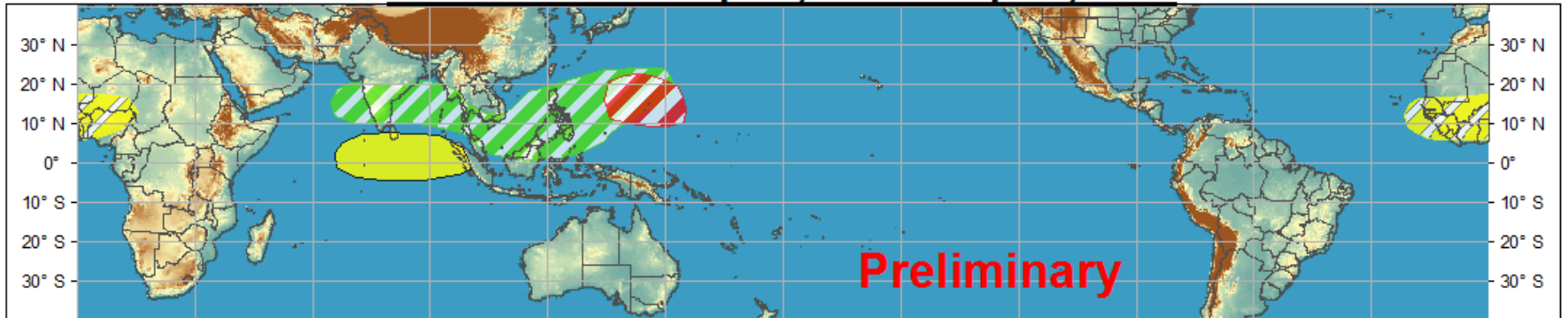
Global Tropics Hazards and Benefits Outlook - Climate Prediction Center



Week 1 - Valid: Sep 11, 2013 - Sep 17, 2013



Week 2 - Valid: Sep 18, 2013 - Sep 24, 2013



Confidence
High Moderate

- | | | |
|-----------------------------------|--|--|
| Tropical Cyclone Formation | | Development of a tropical cyclone that eventually reaches tropical storm/cyclone strength. |
| Above-average rainfall | | Weekly total rainfall in the upper third of the historical range. |
| Below-average rainfall | | Weekly total rainfall in the lower third of the historical range. |
| Above-normal temperatures | | 7-day mean temperatures in the upper third of the historical range. |
| Below-normal temperatures | | 7-day mean temperatures in the lower third of the historical range. |

Produced: 09/10/2013

Forecaster: Baxter

Product is updated once per week. The product targets broad scale conditions integrated over a 7-day period for US interests only. Consult your local responsible forecast agency.

