

Global Tropics Hazards And Benefits Outlook

September 17, 2013

Steve Baxter

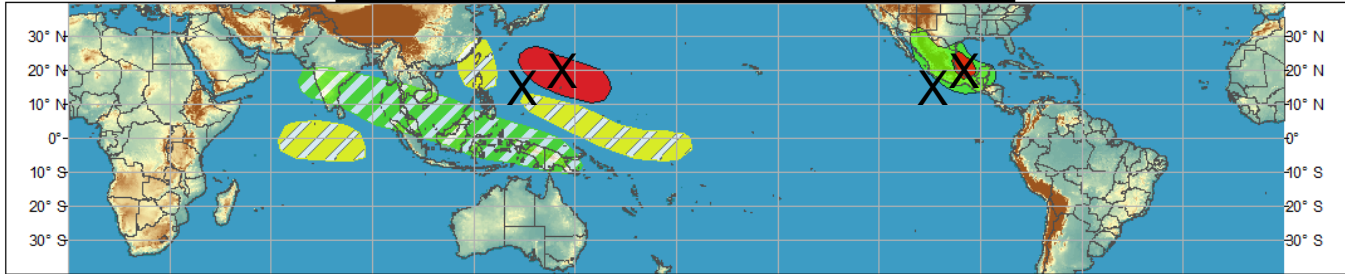
Outline

1. Review of Recent Conditions
2. Synopsis of Climate Modes
3. GTH Outlook and Forecast Discussion

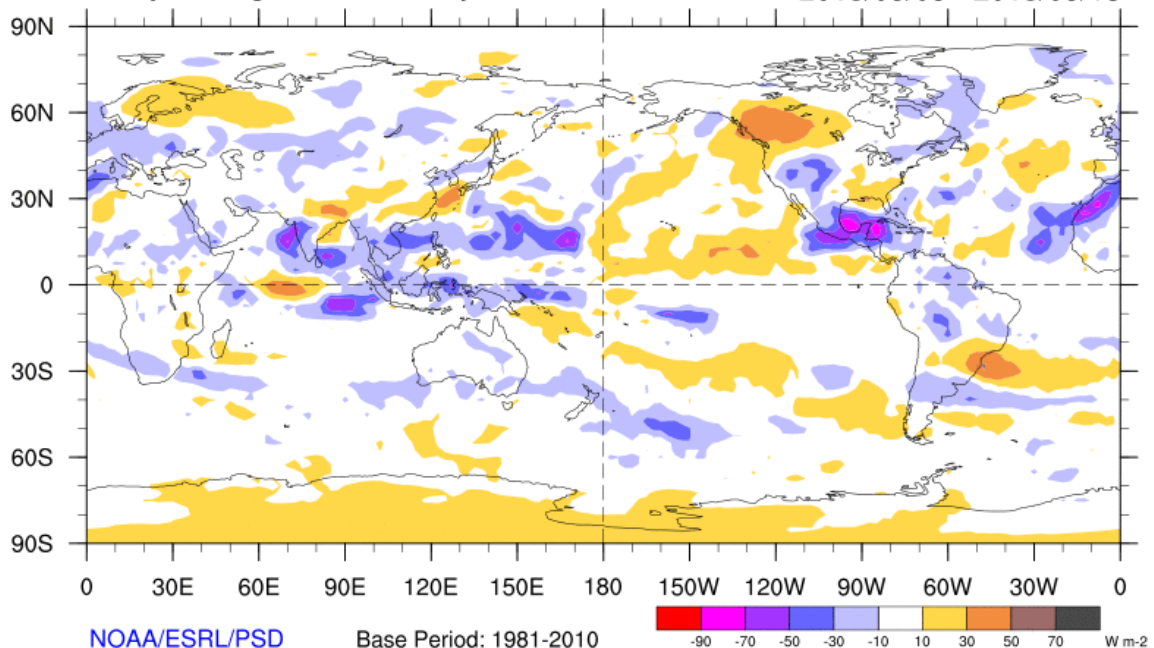
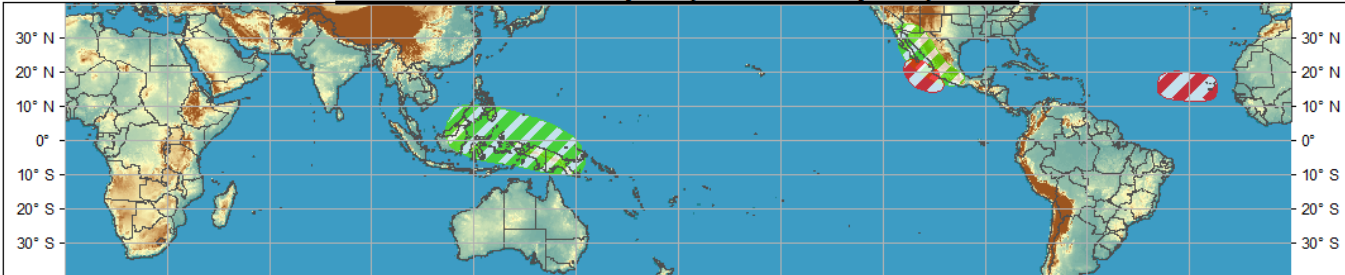
Outlook Review



Week 1 - Valid: Sep 11, 2013 - Sep 17, 2013



Week 2 - Valid: Sep 11, 2013 - Sep 17, 2013



NOAA/ESRL/PSD

Base Period: 1981-2010



Cool shading
More clouds/rain

Warm shading
Less clouds/rain

Synopsis of Climate Modes

ENSO:

- ENSO-neutral conditions are favored to continue through late boreal winter 2013-2014.

MJO and other subseasonal tropical variability:

- The MJO has remained active over the past week, propagating from the Indian Ocean to the Maritime Continent.
- Model MJO index forecasts indicate a slowly propagating MJO from Phase 5 to Phase 6 of the Wheeler and Hendon phase diagram.

Tropics:

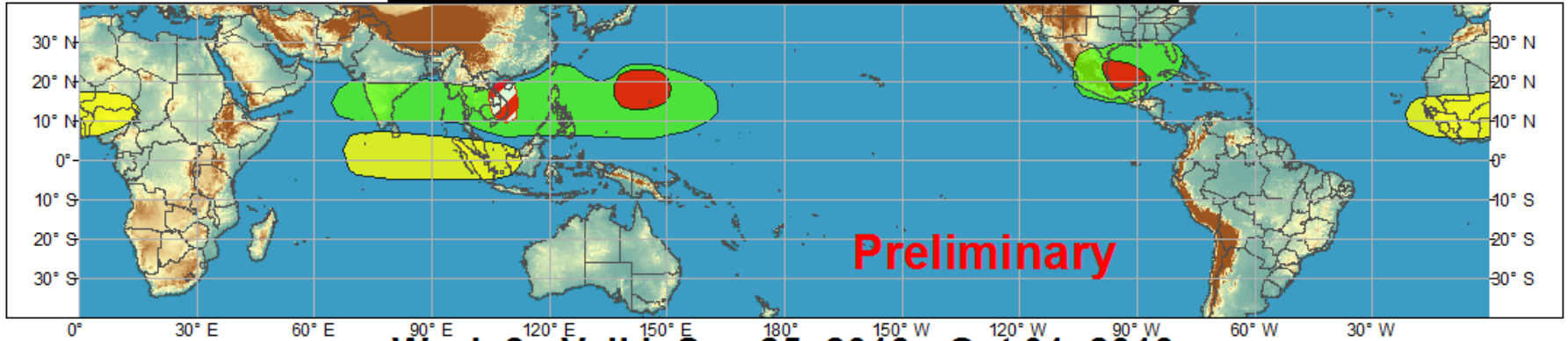
- Elevated odds for TC development in the western North Pacific during the next two weeks, including parts of the South China Sea. Development in this region is supported by the large-scale MJO signal.
- Moderate-to-high chances for TC development in the southern Gulf of Mexico during Week-1.
- The MJO supports suppressed activity across the Atlantic Basin over the next two weeks.



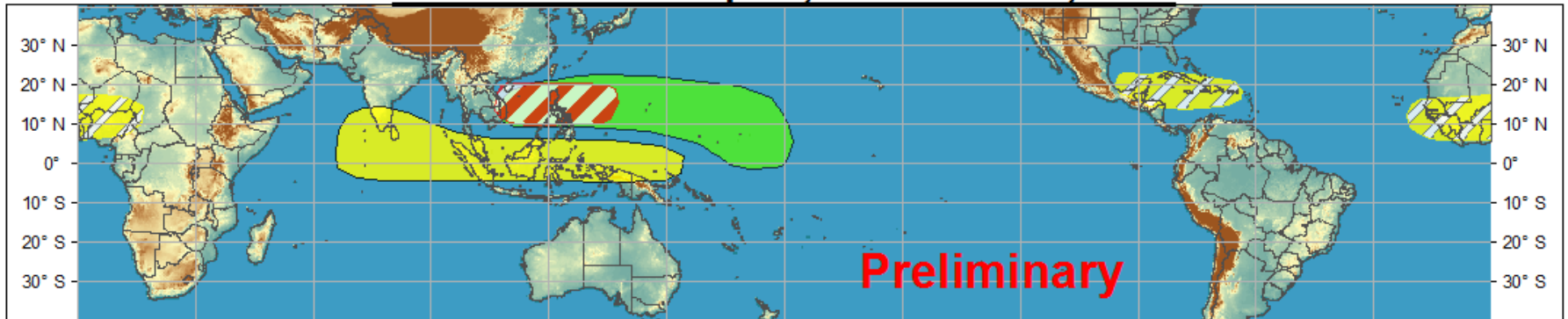
Global Tropics Hazards and Benefits Outlook - Climate Prediction Center



Week 1 - Valid: Sep 18, 2013 - Sep 24, 2013



Week 2 - Valid: Sep 25, 2013 - Oct 01, 2013



Confidence
High Moderate

Tropical Cyclone Formation



Development of a tropical cyclone that eventually reaches tropical storm/cyclone strength.

Above-average rainfall



Weekly total rainfall in the upper third of the historical range.

Below-average rainfall



Weekly total rainfall in the lower third of the historical range.

Above-normal temperatures



7-day mean temperatures in the upper third of the historical range.

Below-normal temperatures



7-day mean temperatures in the lower third of the historical range.

Produced: 09/17/2013

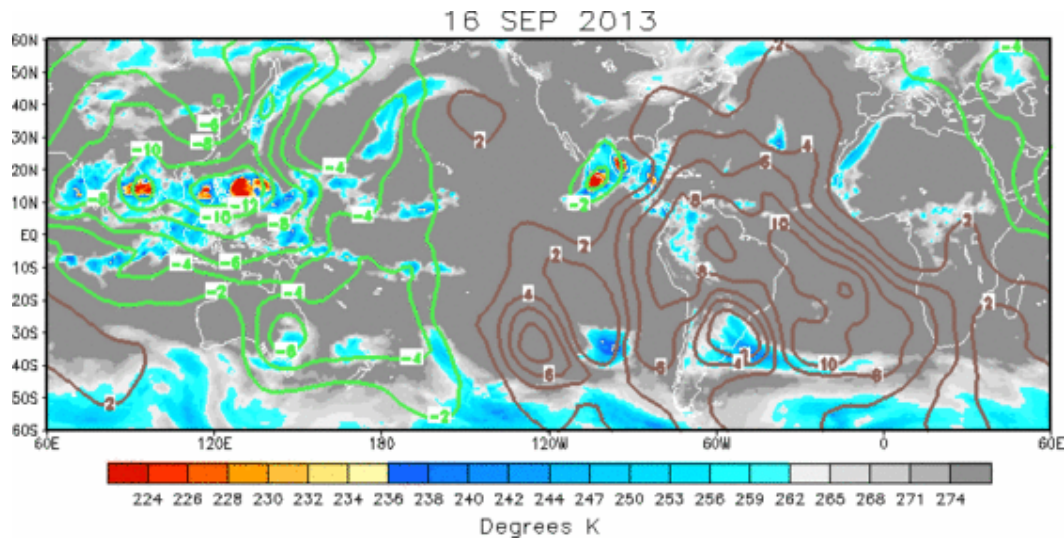
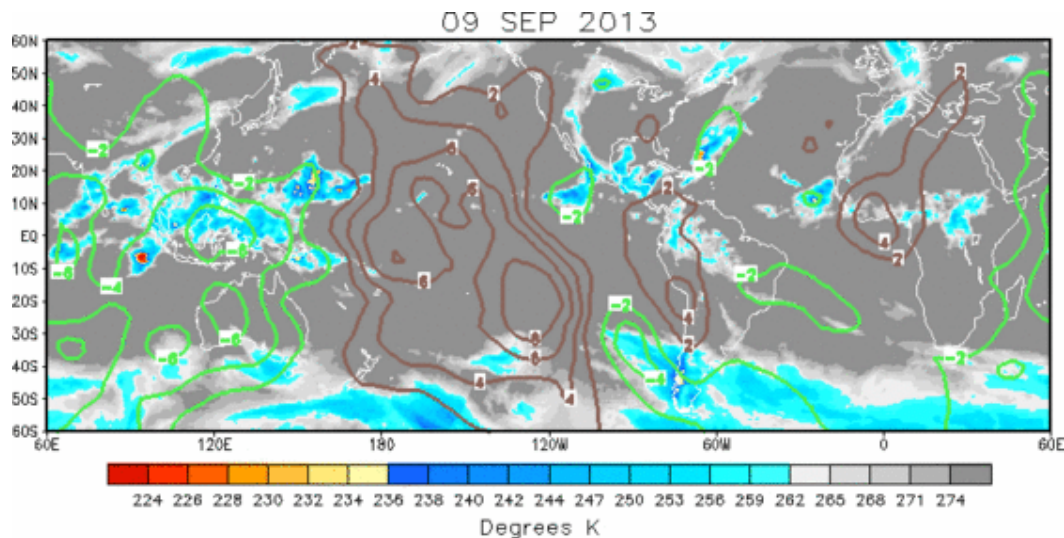
Forecaster: Baxter

Product is updated once per week. The product targets broad scale conditions integrated over a 7-day period for US interests only. Consult your local responsible forecast agency.



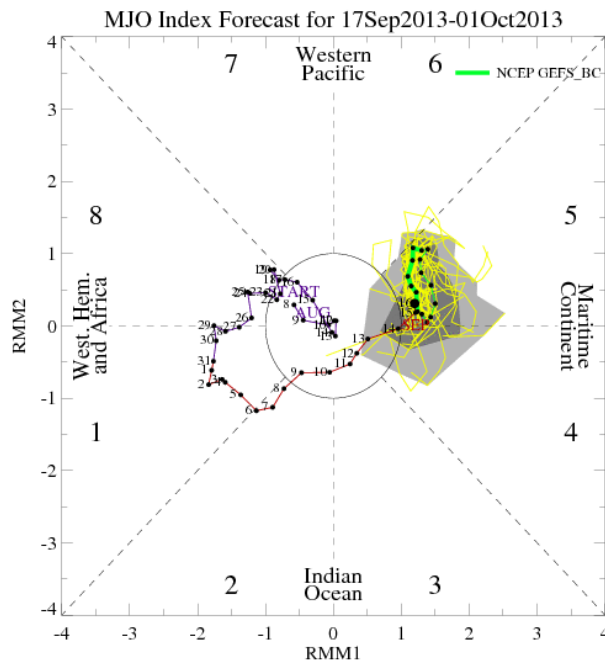
IR Satellite & 200-hpa Velocity Potential Anomalies

Green: Enhanced Divergence Brown: Enhanced Convergence

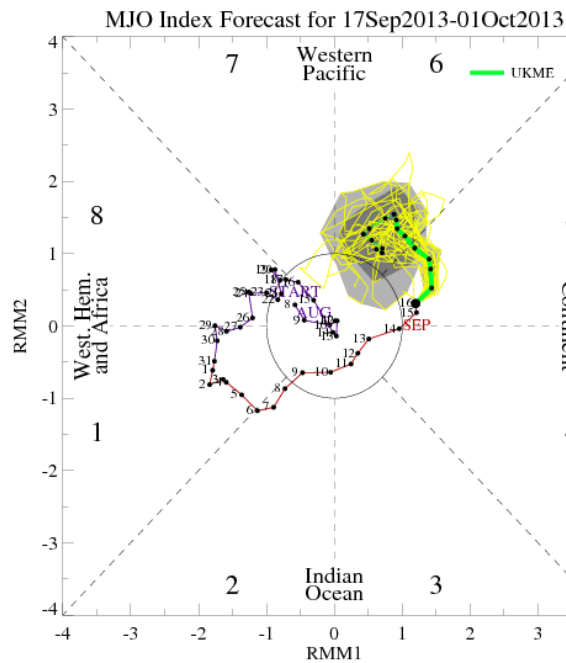


MJO Observation/Forecast

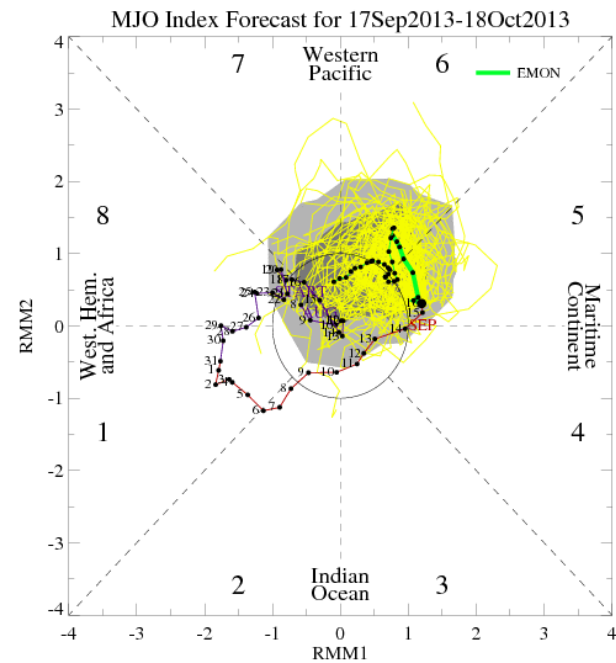
GFS

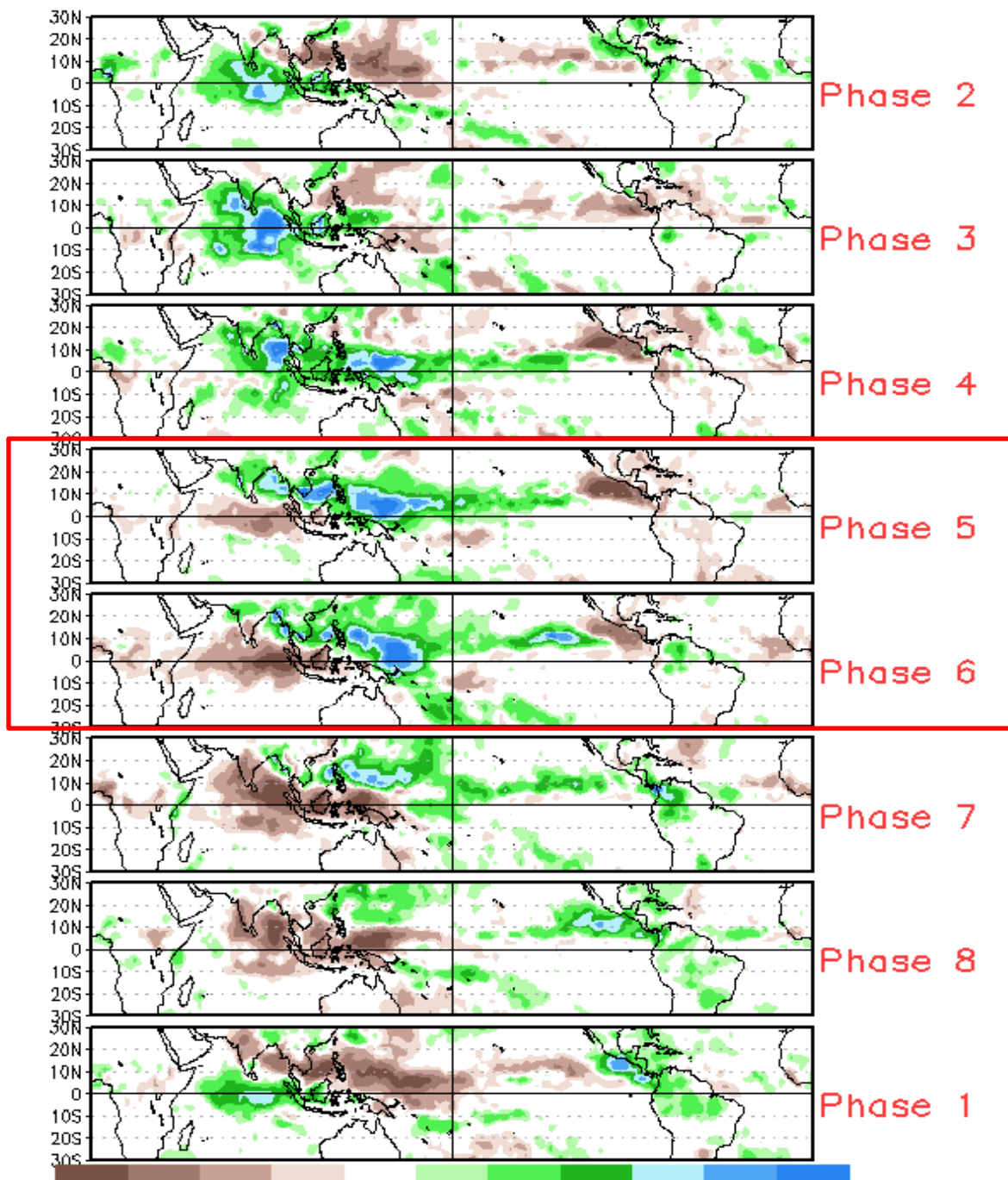


UKMET

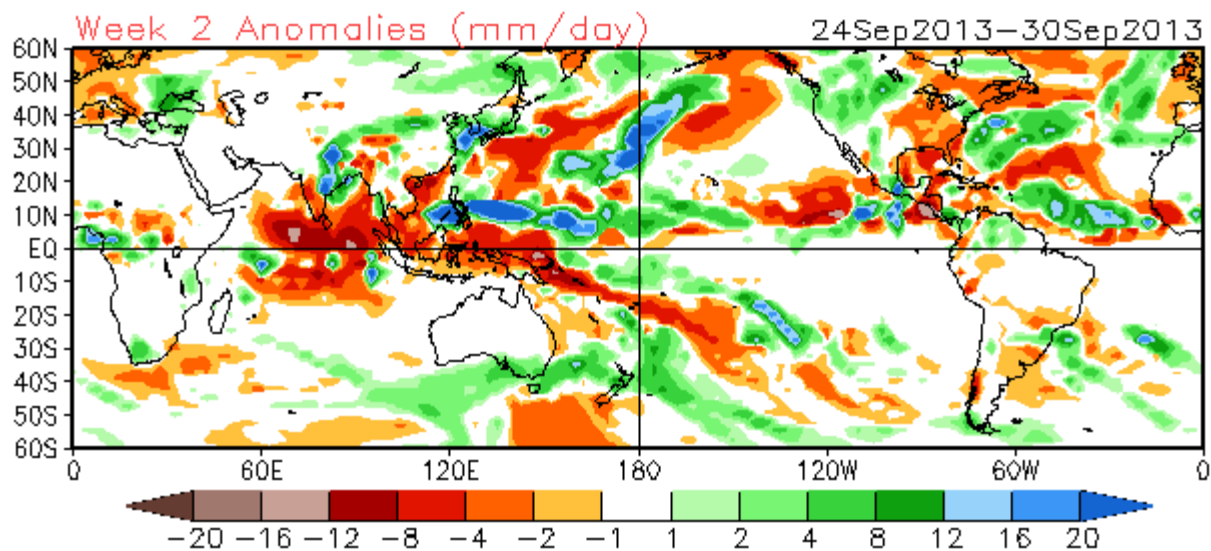
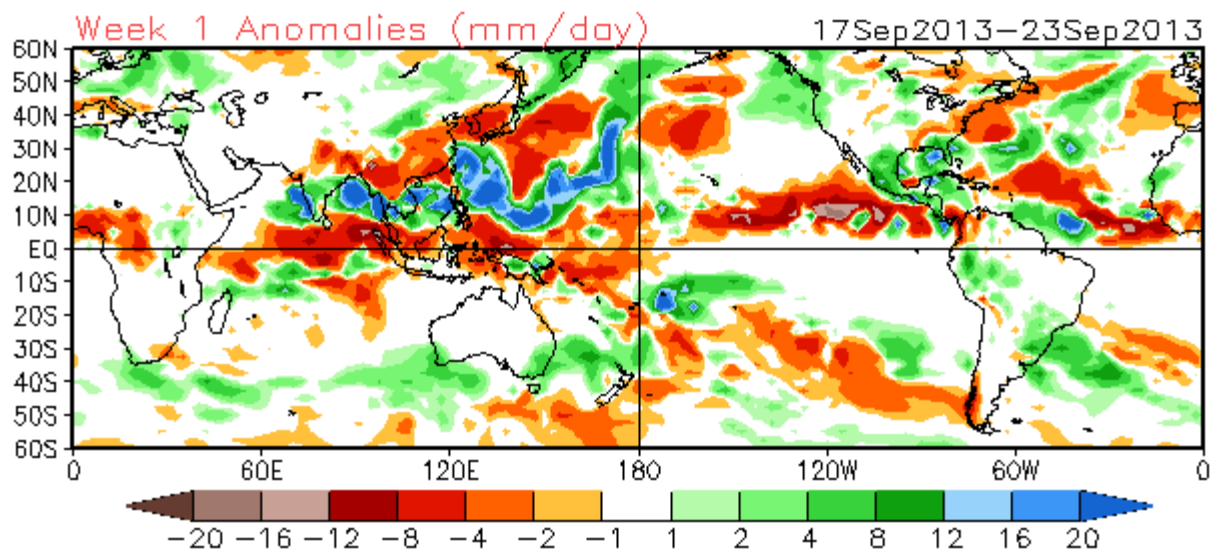


ECMWF

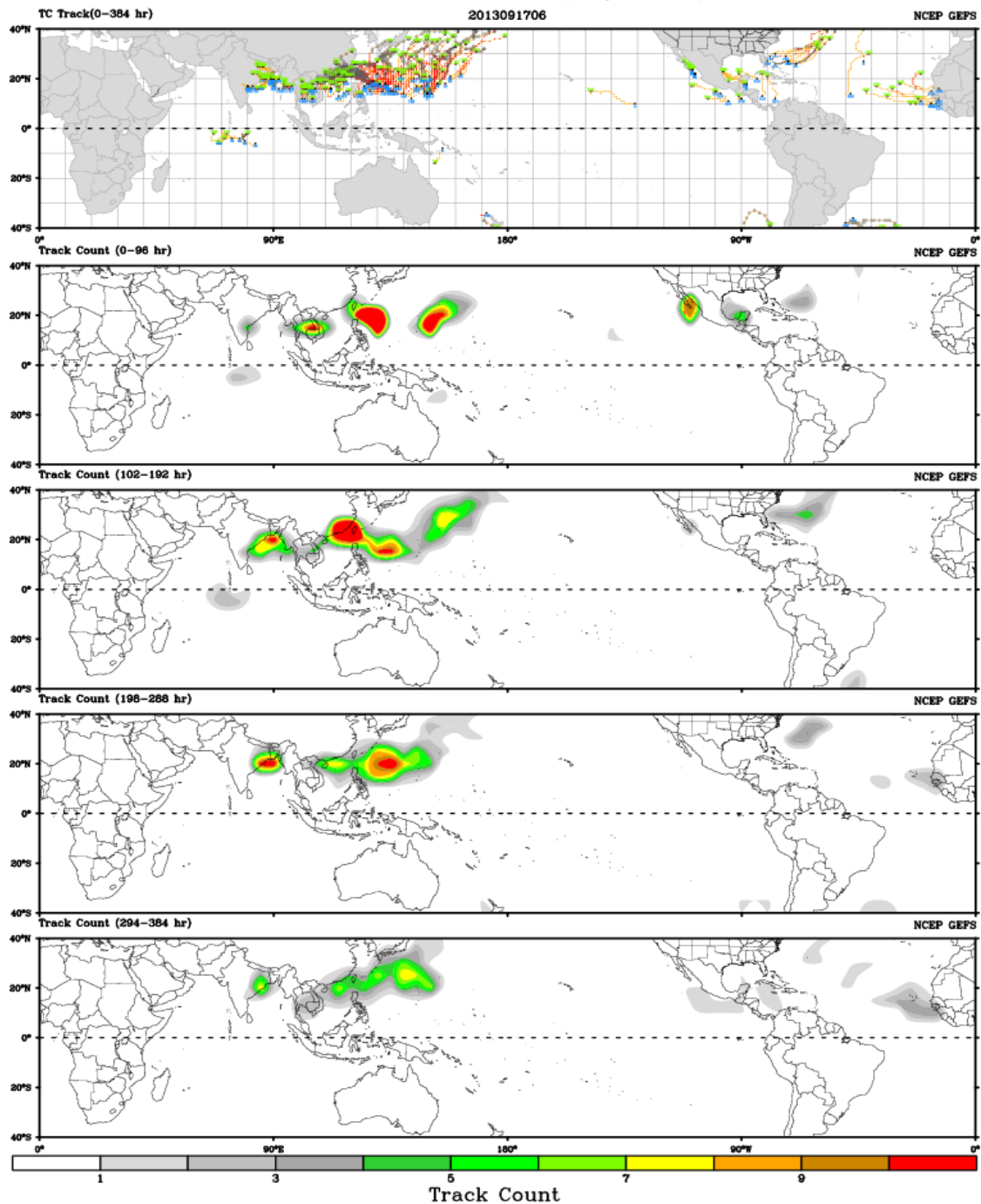




CFSv2 Weeks 1 & 2 Precipitation
16 Member Ensemble Mean Forecast from 16Sep2013



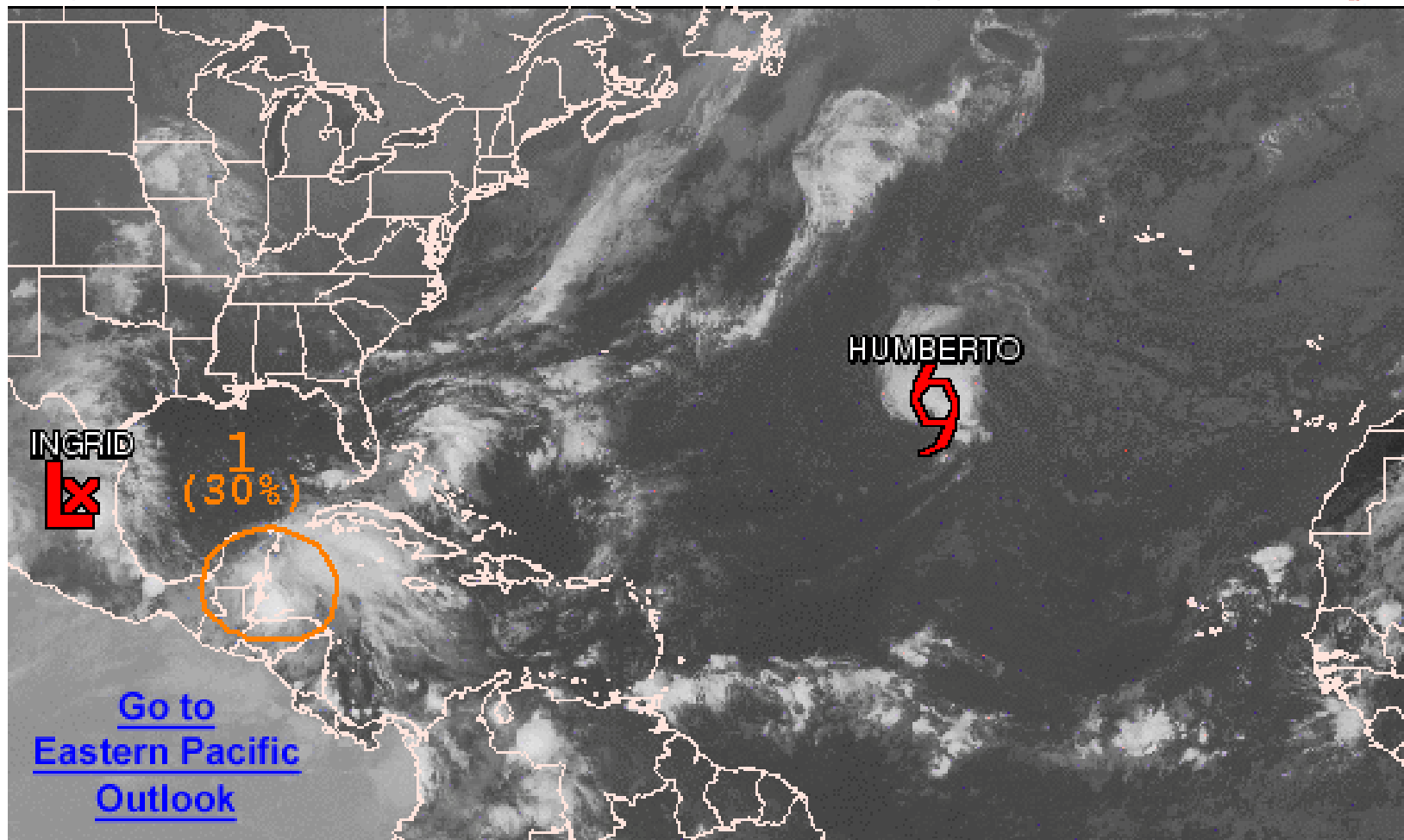
CWB TC Tracker for NCEP GEFS (Fuzzy_AllCriteria)





Graphical Tropical Weather Outlook

National Hurricane Center Miami, Florida



800 AM EDT TUE SEP 17 2013

Satellite Image: 0652 AM EDT

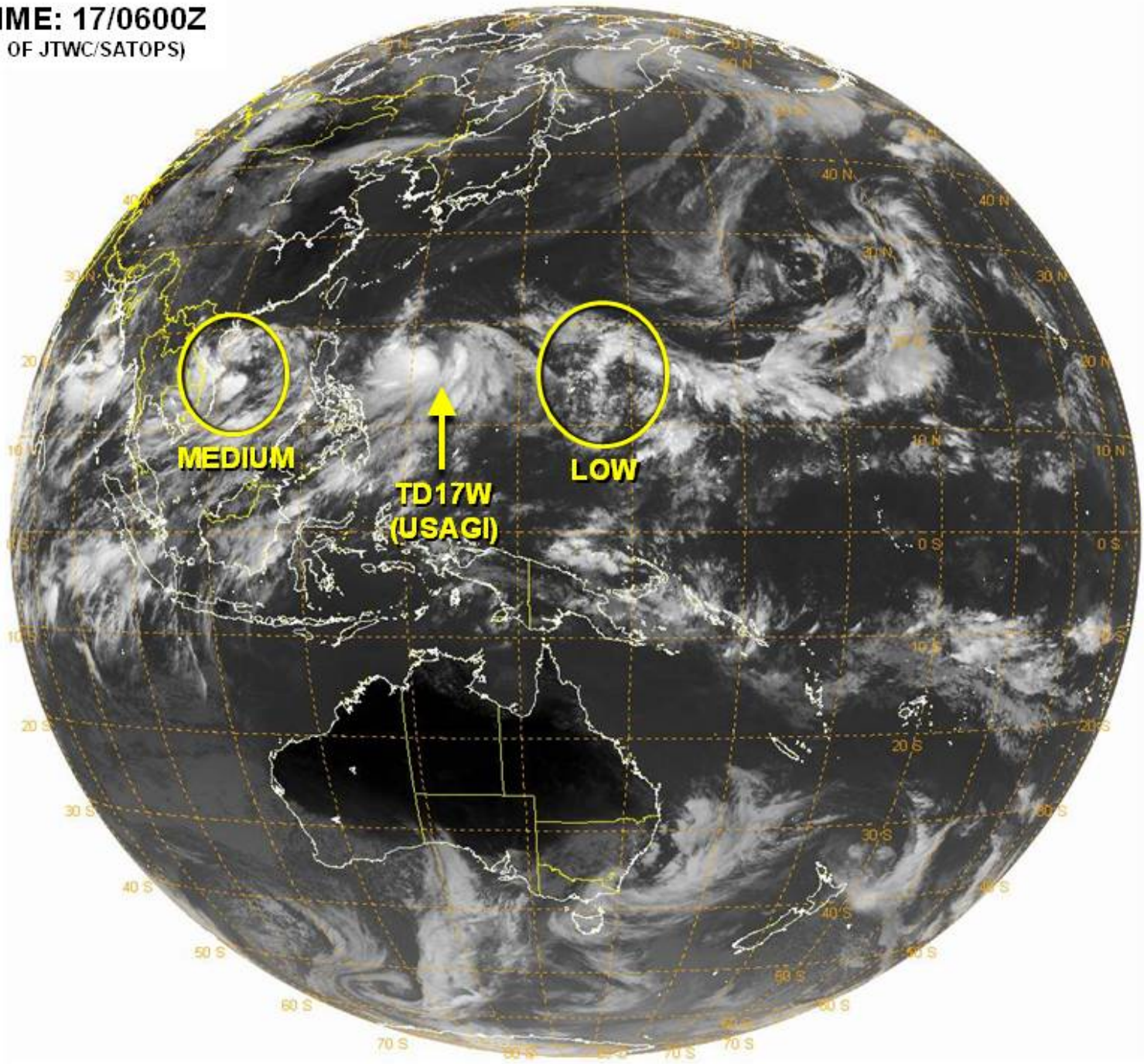
Outlined areas denote current position of systems discussed in the Tropical Weather Outlook. Color indicates probability of tropical cyclone formation within 48 hours.

 Low <30%

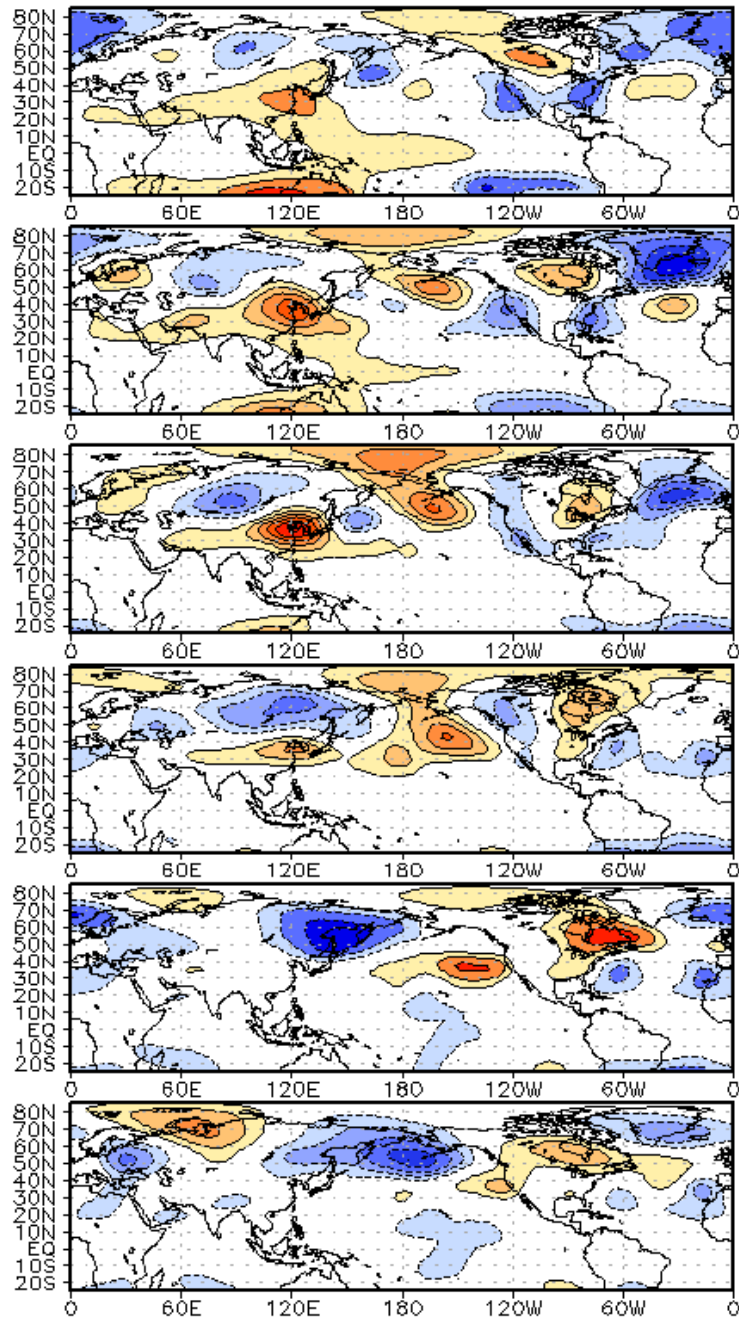
 Medium 30-50%

 High >50%

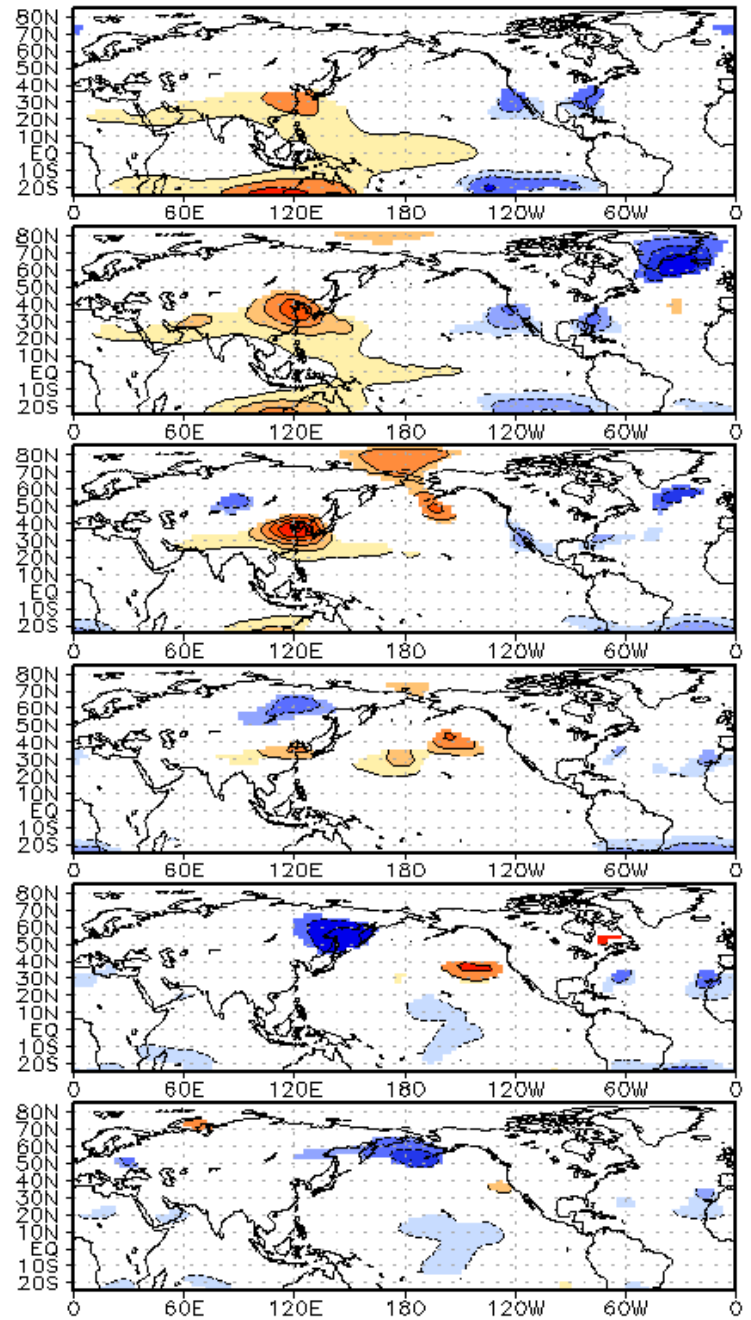
VALID TIME: 17/0600Z
(PRODUCT OF JTWC/SATOPS)



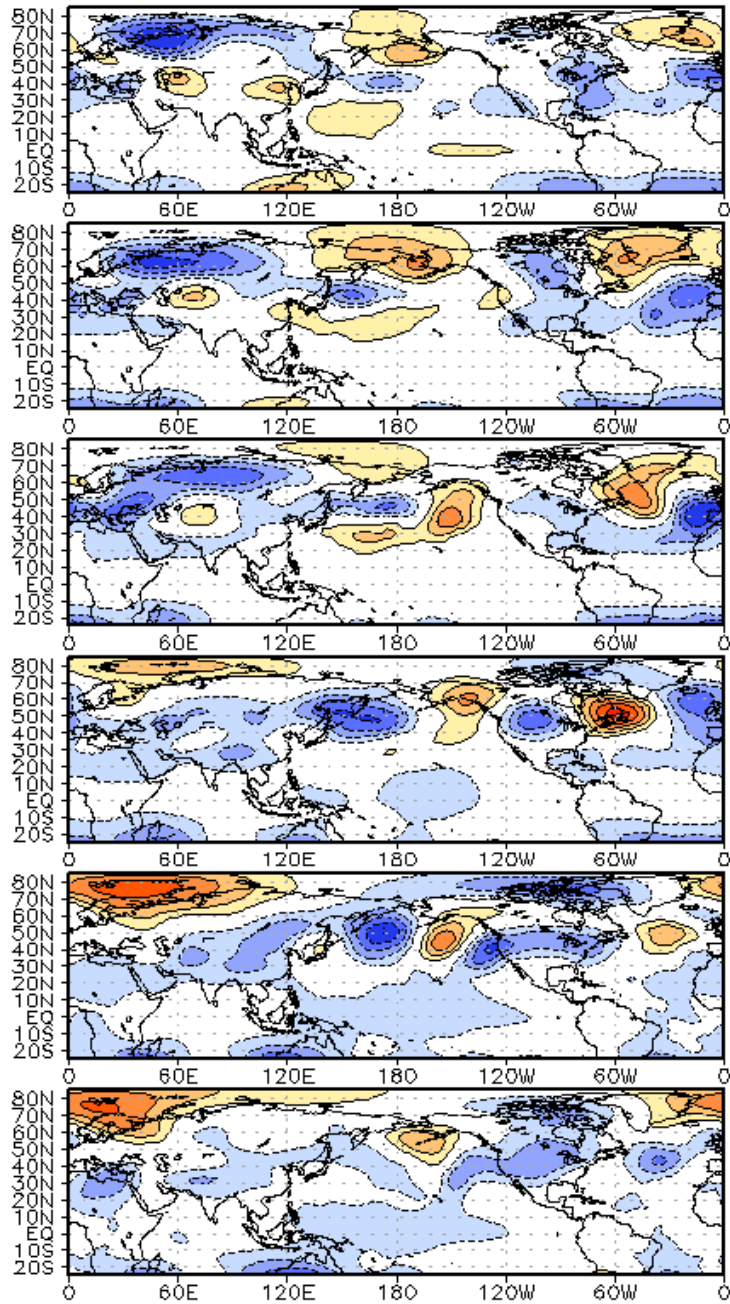
WHMJO Phase 5 z200 Lagged Composite (aso)



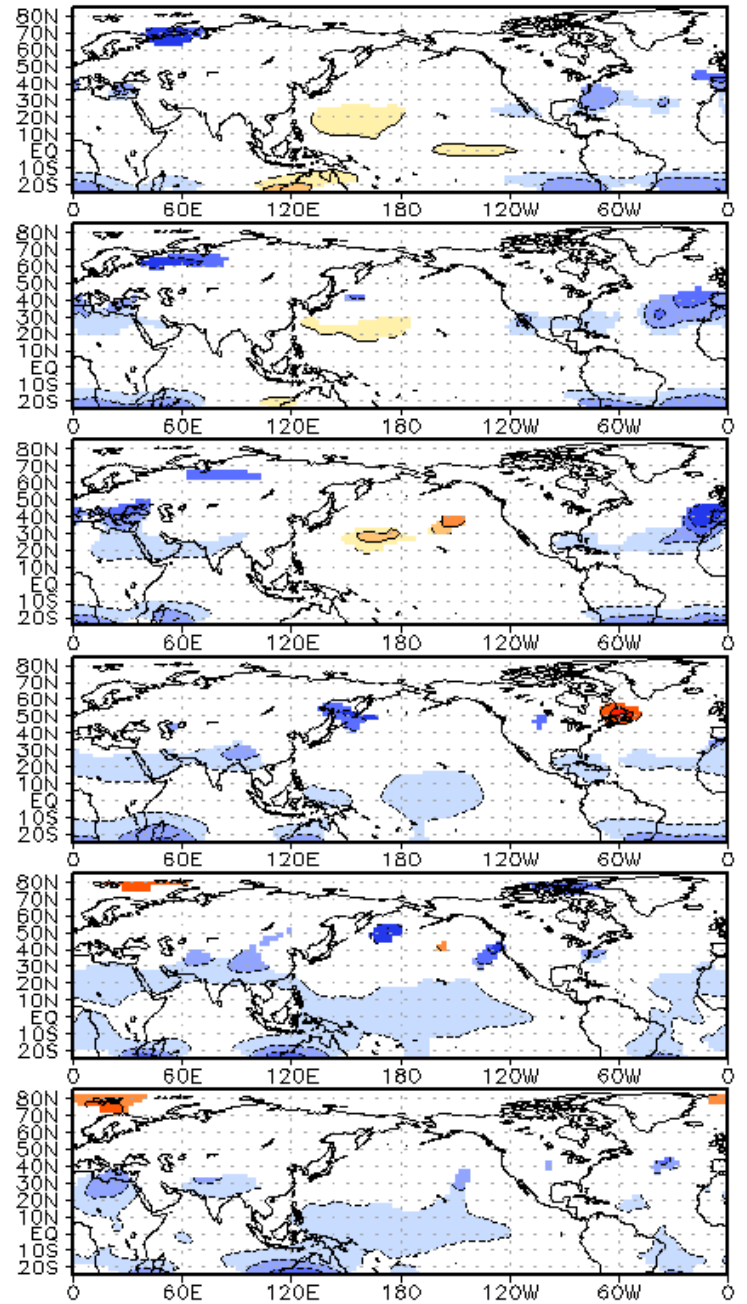
WHMJO Phase 5 z200 Lagged Composite (aso)

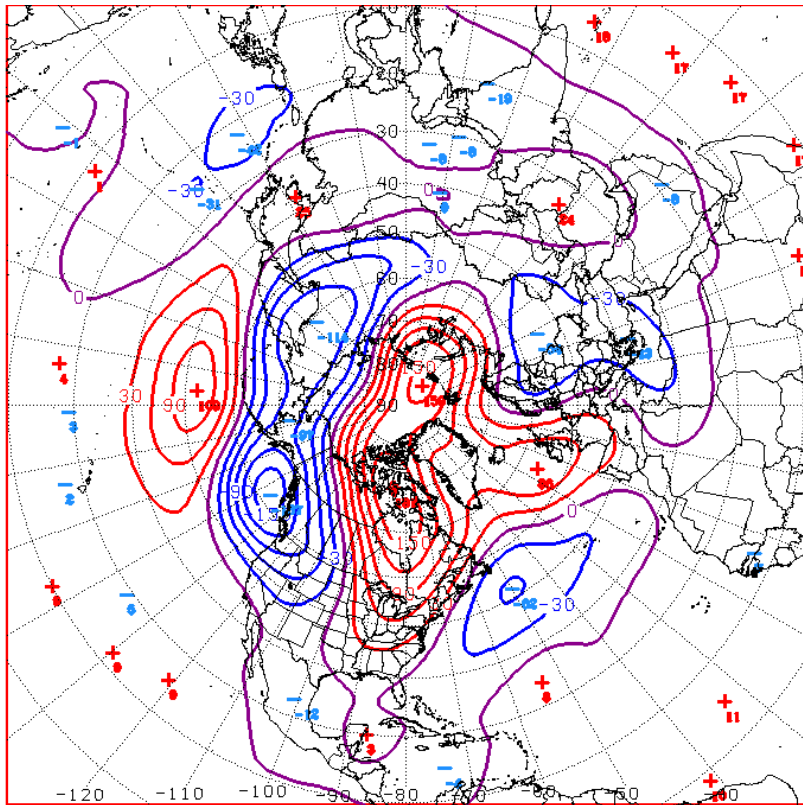


WHMJO Phase 6 z200 Lagged Composite (aao)

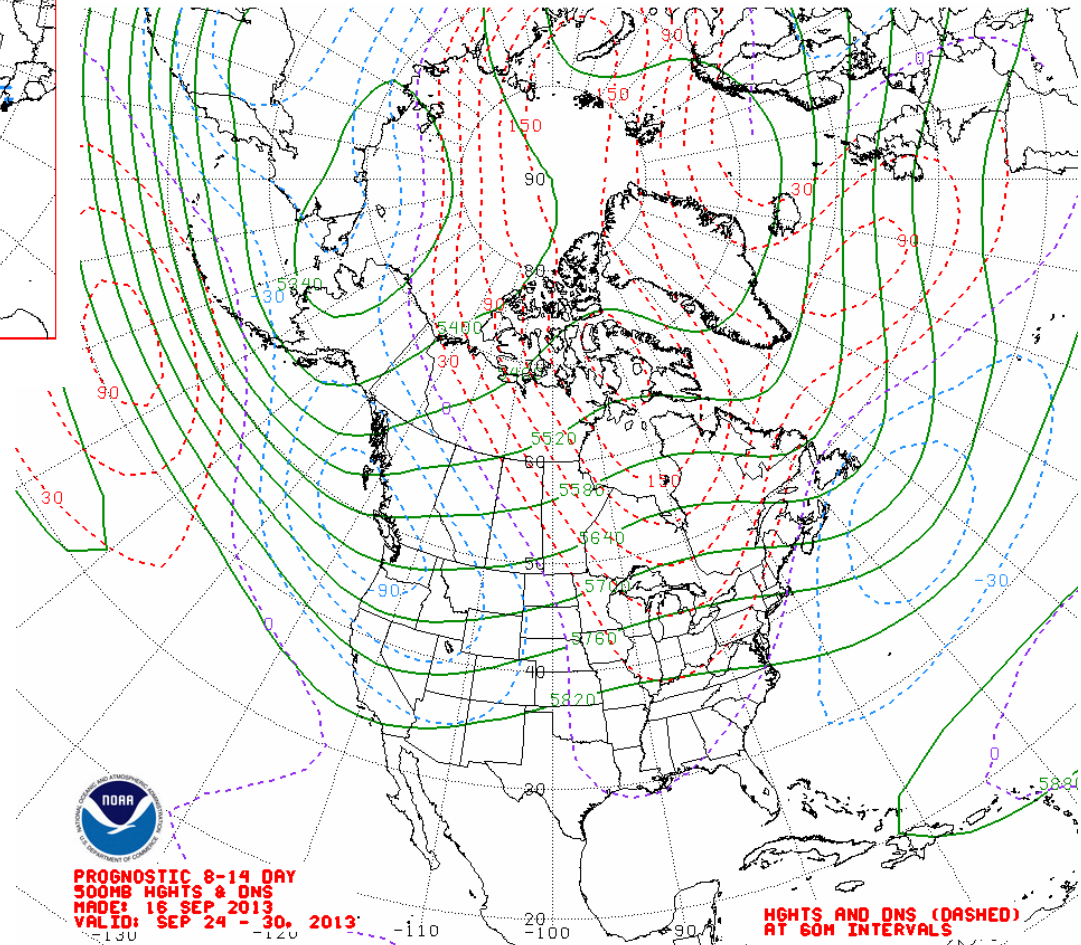


WHMJO Phase 6 z200 Lagged Composite (aao)



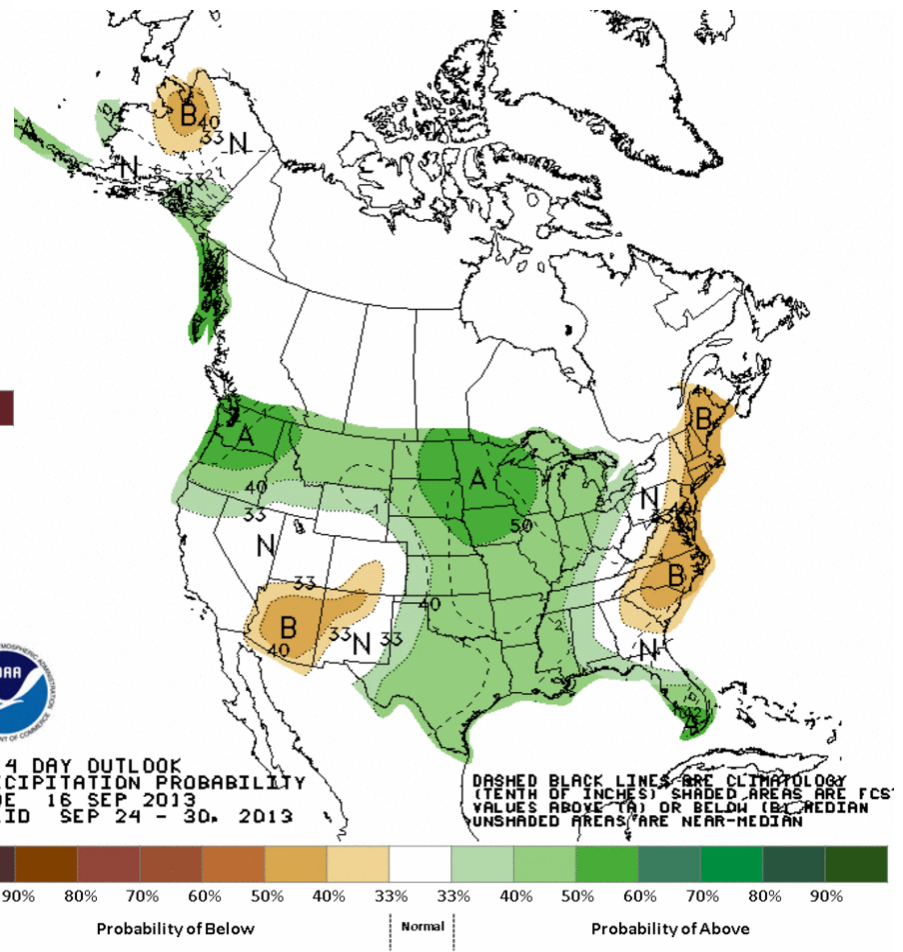
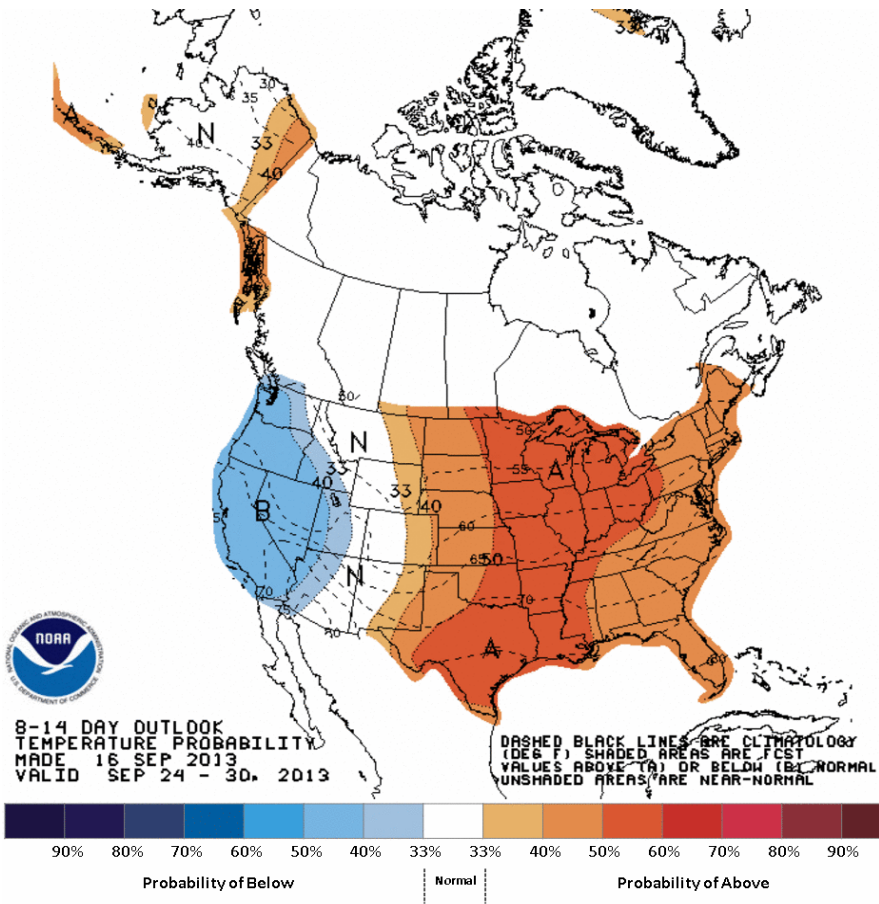


D+11 500 MB ANOMALIES FROM 06Z ENSM
 CPC MAP MADE SEP 17 2013 1220 UTC CNTD SEP 28 2013



**PROGNOSTIC 8-14 DAY
 500MB HGHTS & DNS
 MADE: 16 SEP 2013
 VALID: SEP 24 - 30, 2013**

**HGHTS AND DNS (DASHED)
 AT 60M INTERVALS**

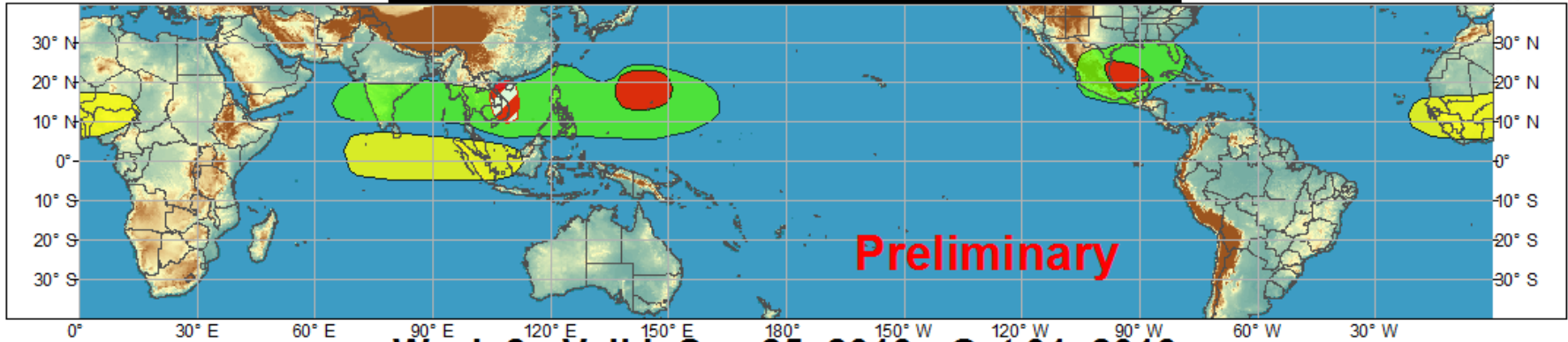




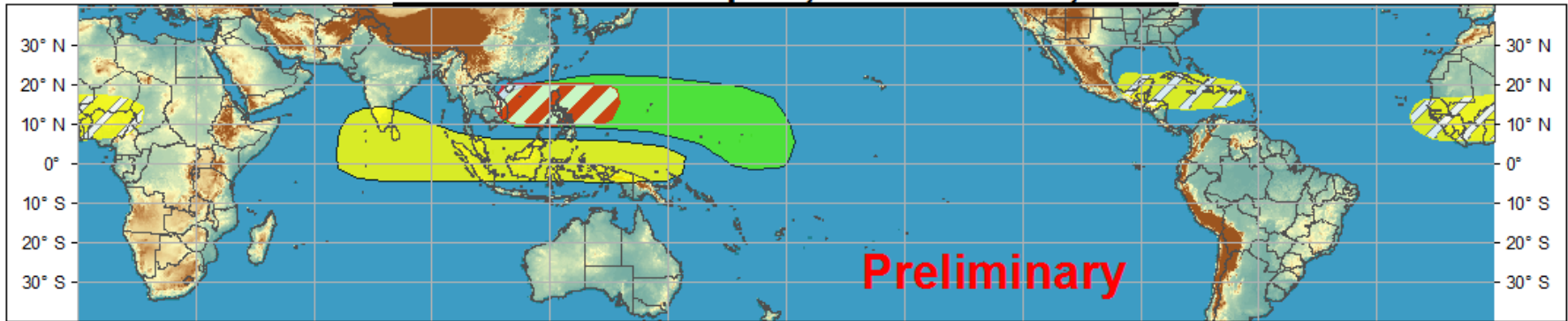
Global Tropics Hazards and Benefits Outlook - Climate Prediction Center



Week 1 - Valid: Sep 18, 2013 - Sep 24, 2013



Week 2 - Valid: Sep 25, 2013 - Oct 01, 2013



Produced: 09/17/2013

Forecaster: Baxter

Confidence
High Moderate

Tropical Cyclone Formation



Development of a tropical cyclone that eventually reaches tropical storm/cyclone strength.

Above-average rainfall



Weekly total rainfall in the upper third of the historical range.

Below-average rainfall



Weekly total rainfall in the lower third of the historical range.

Above-normal temperatures



7-day mean temperatures in the upper third of the historical range.

Below-normal temperatures



7-day mean temperatures in the lower third of the historical range.

Product is updated once per week. The product targets broad scale conditions integrated over a 7-day period for US interests only. Consult your local responsible forecast agency.

