

Global Tropics Hazards And Benefits Outlook

September 24, 2013

Steve Baxter

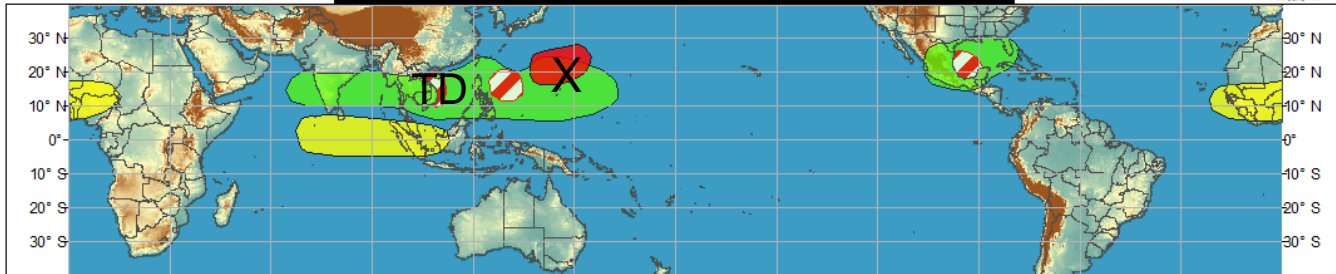
Outline

1. Review of Recent Conditions
2. Synopsis of Climate Modes
3. GTH Outlook and Forecast Discussion

Outlook Review



Week 1 - Valid: Sep 18, 2013 - Sep 24, 2013

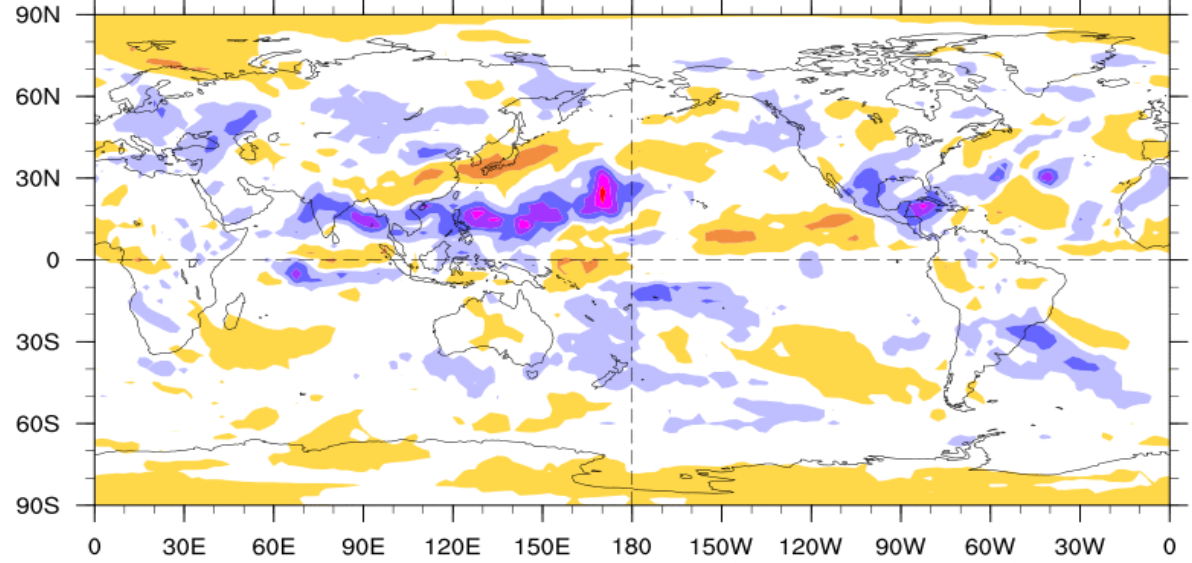


Week 2 - Valid: Sep 18, 2013 - Sep 24, 2013



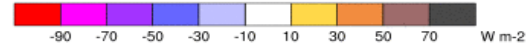
7-Day Average OLR Anomaly

2013/09/16 - 2013/09/22



Cool shading
More clouds/rain

Warm shading
Less clouds/rain



Synopsis of Climate Modes

ENSO:

- ENSO-neutral conditions are favored to continue through late boreal winter 2013-2014.

MJO and other subseasonal tropical variability:

- The MJO has remained active over the past week, propagating across the Maritime Continent and into the West Pacific.
- Preferred model MJO index forecasts indicate a slowly propagating MJO from Phase 6 to Phase 7 of the Wheeler and Hendon phase diagram during the next two weeks.

Tropics:

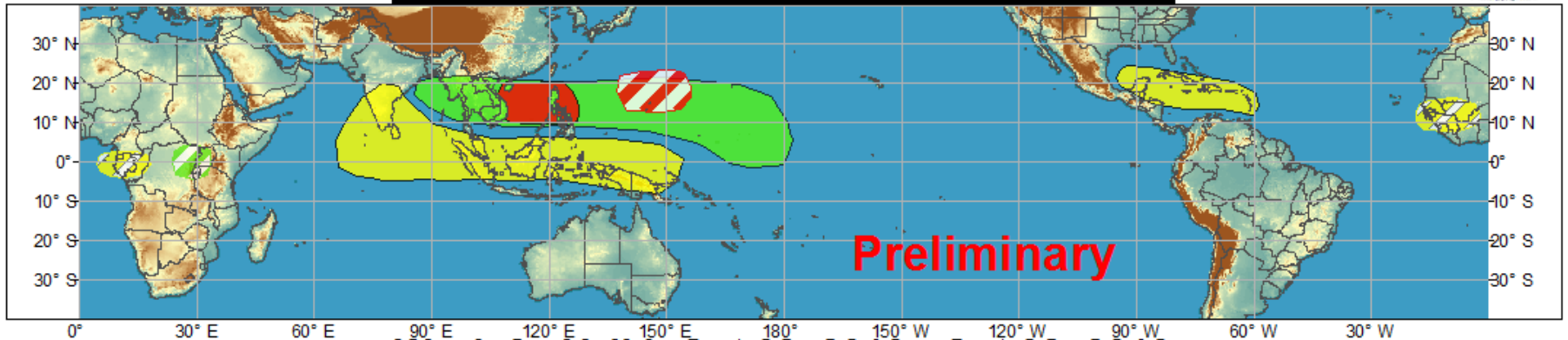
- Elevated odds for TC development in the western North Pacific during the next two weeks, including parts of the South China Sea. Development in this basin is supported by the large-scale MJO signal.
- Low chance for TC development near 30N, 70W during Week-1.
- Low-to-moderate chance for TC development across parts of the East Pacific from late Week-1 to Week-2.
- Generally suppressed TC activity in the Atlantic over the next two weeks, with an increase in activity possible by the middle of October.



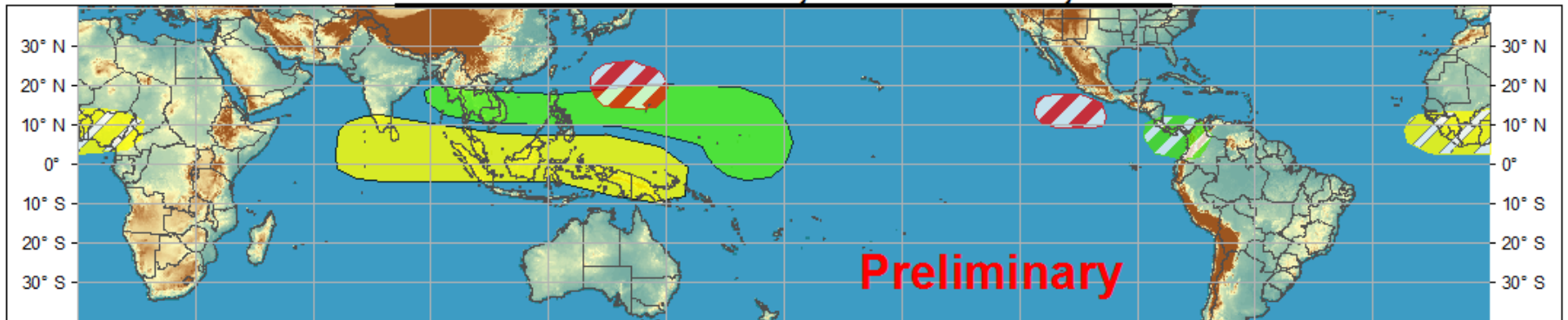
Global Tropics Hazards and Benefits Outlook - Climate Prediction Center



Week 1 - Valid: Sep 25, 2013 - Oct 01, 2013



Week 2 - Valid: Oct 02, 2013 - Oct 08, 2013



Confidence

High Moderate

Tropical Cyclone Formation



Development of a tropical cyclone that eventually reaches tropical storm/cyclone strength.

Above-average rainfall



Weekly total rainfall in the upper third of the historical range.

Below-average rainfall



Weekly total rainfall in the lower third of the historical range.

Above-normal temperatures



7-day mean temperatures in the upper third of the historical range.

Below-normal temperatures



7-day mean temperatures in the lower third of the historical range.

Produced: 09/24/2013

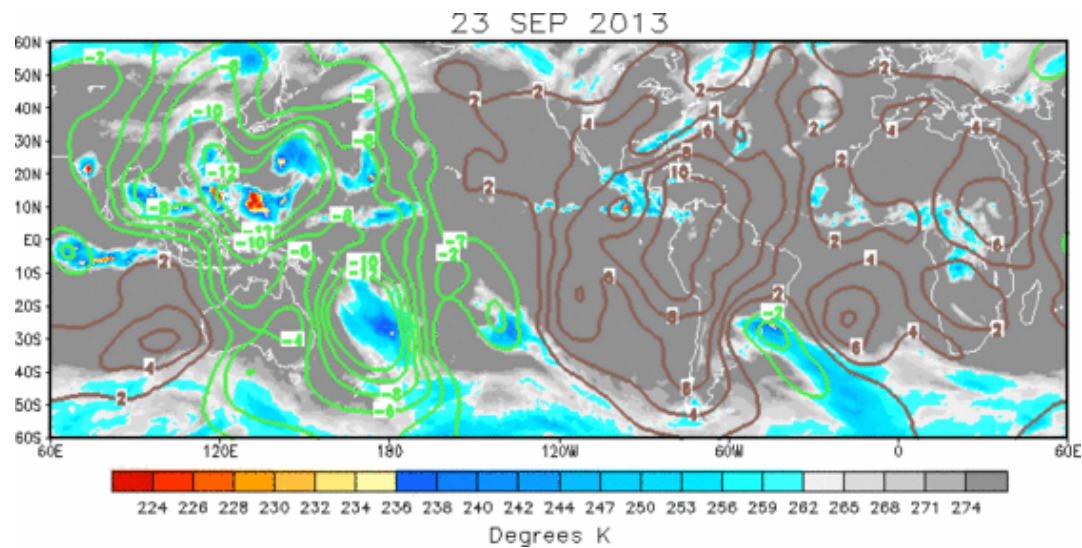
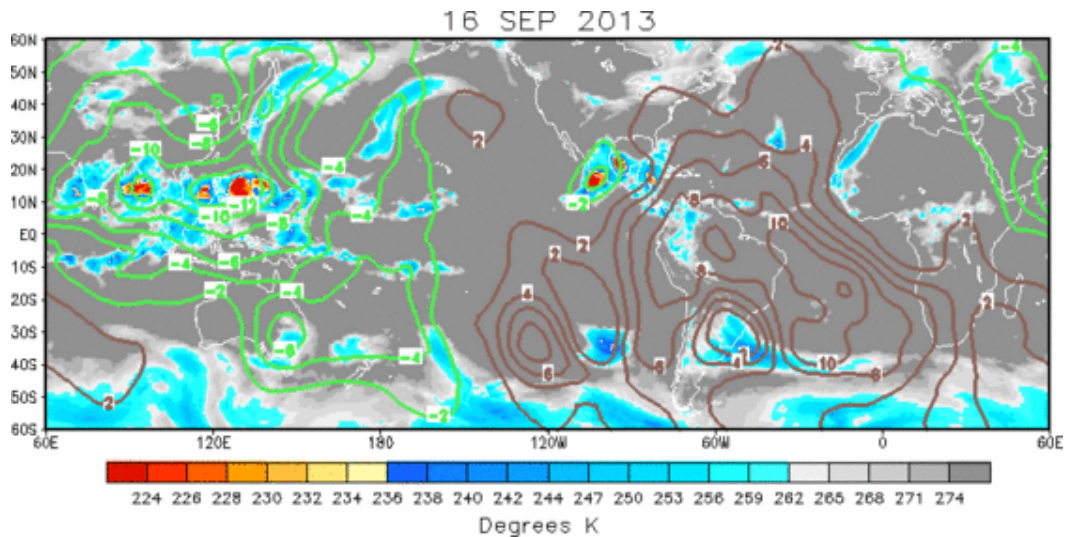
Forecaster: Baxter

Product is updated once per week. The product targets broad scale conditions integrated over a 7-day period for US interests only. Consult your local responsible forecast agency.



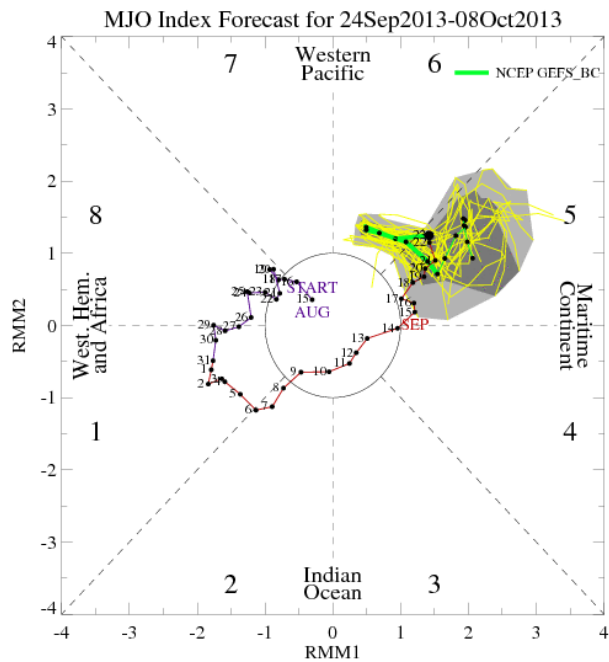
IR Satellite & 200-hpa Velocity Potential Anomalies

Green: Enhanced Divergence Brown: Enhanced Convergence

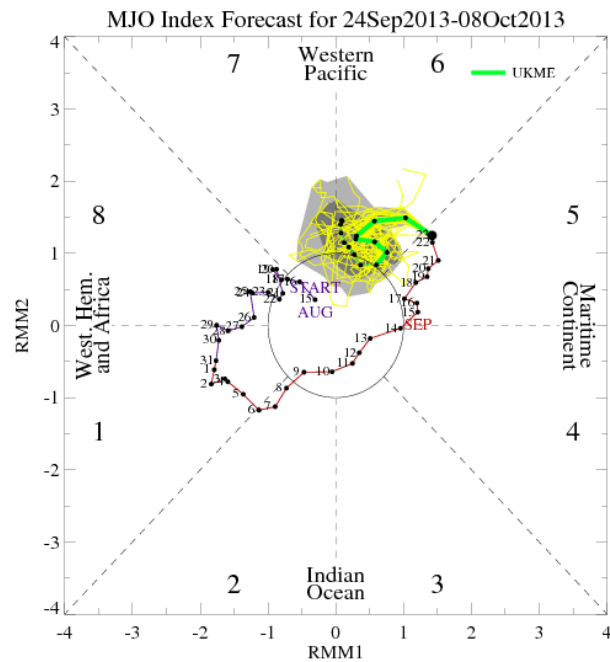


MJO Observation/Forecast

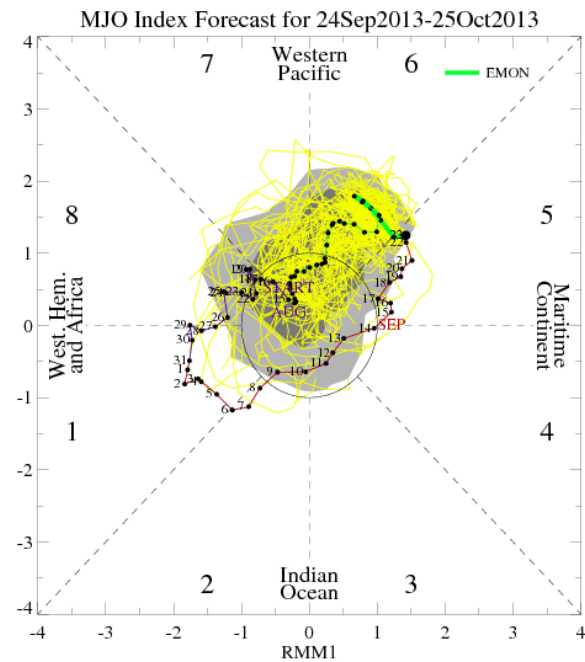
GFS

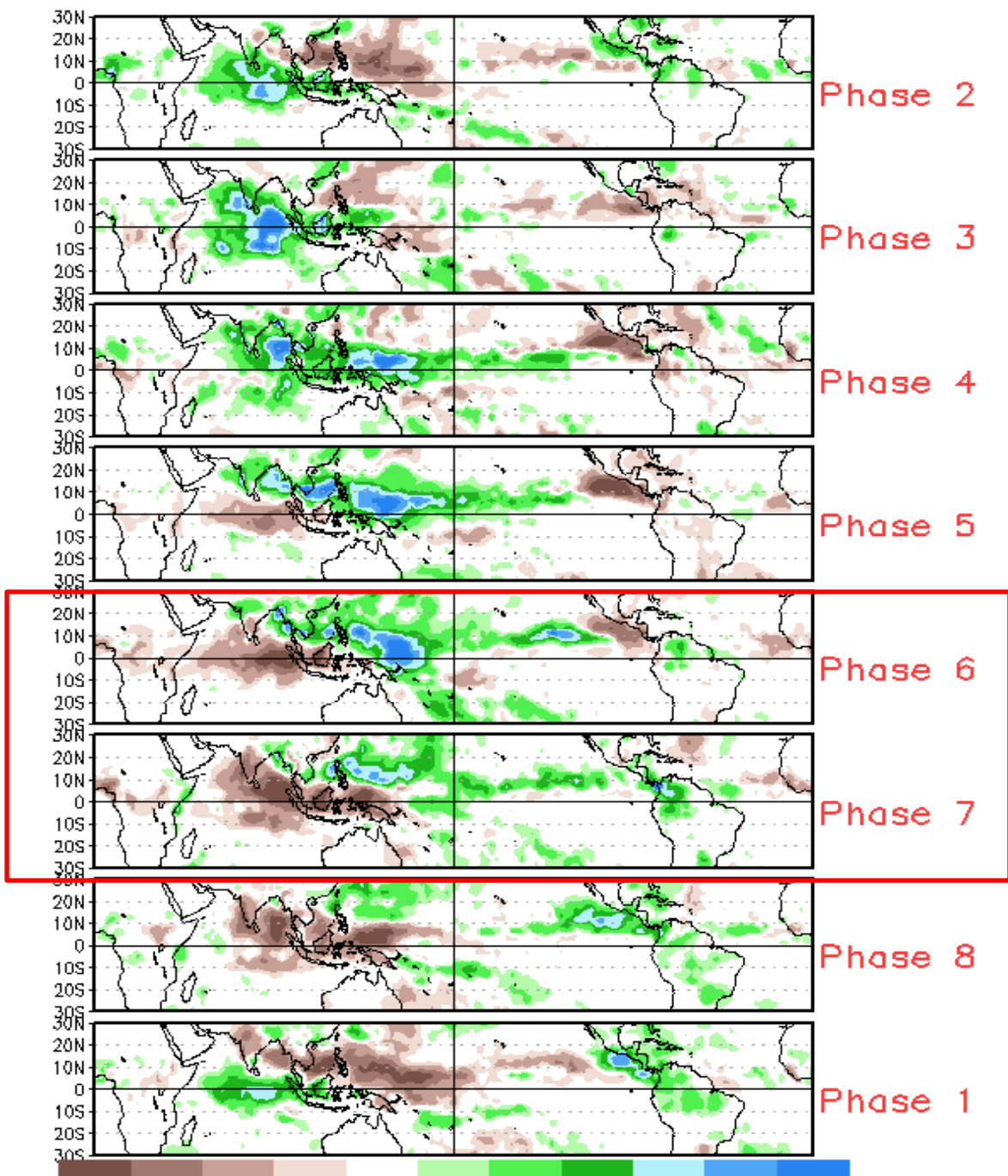


UKMET



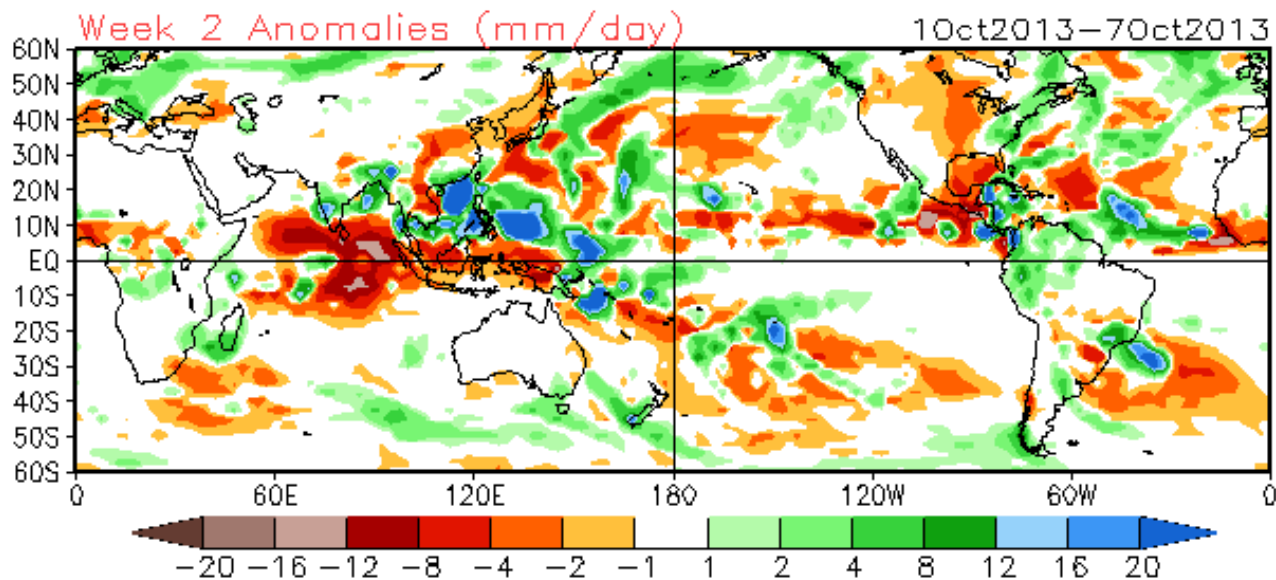
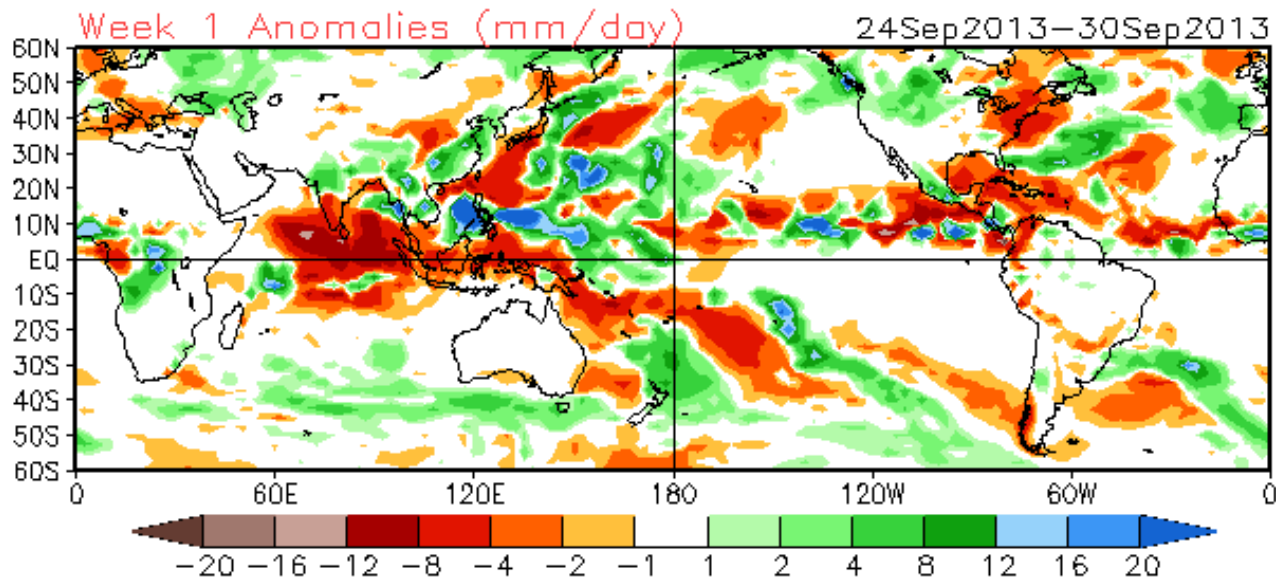
ECMWF

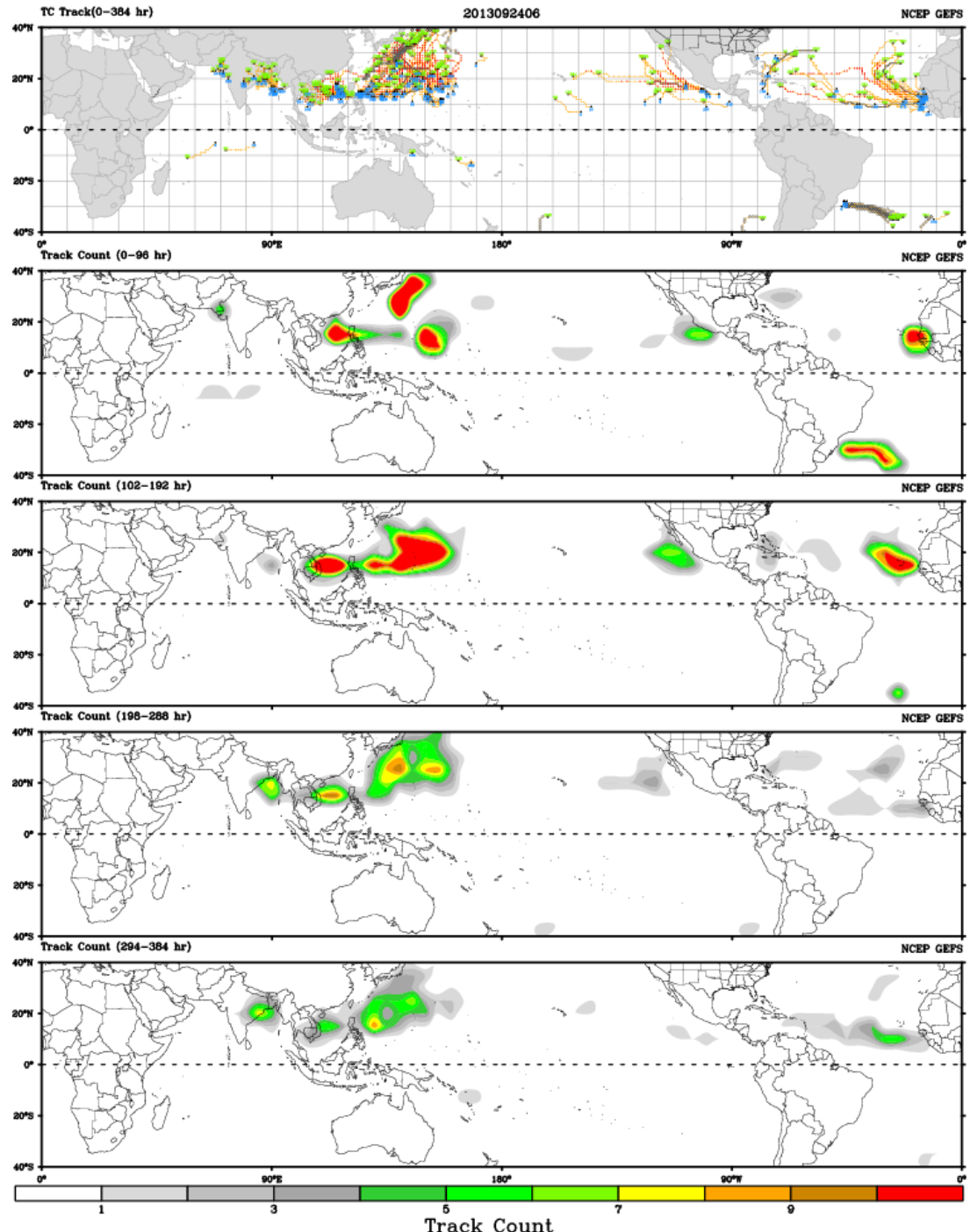




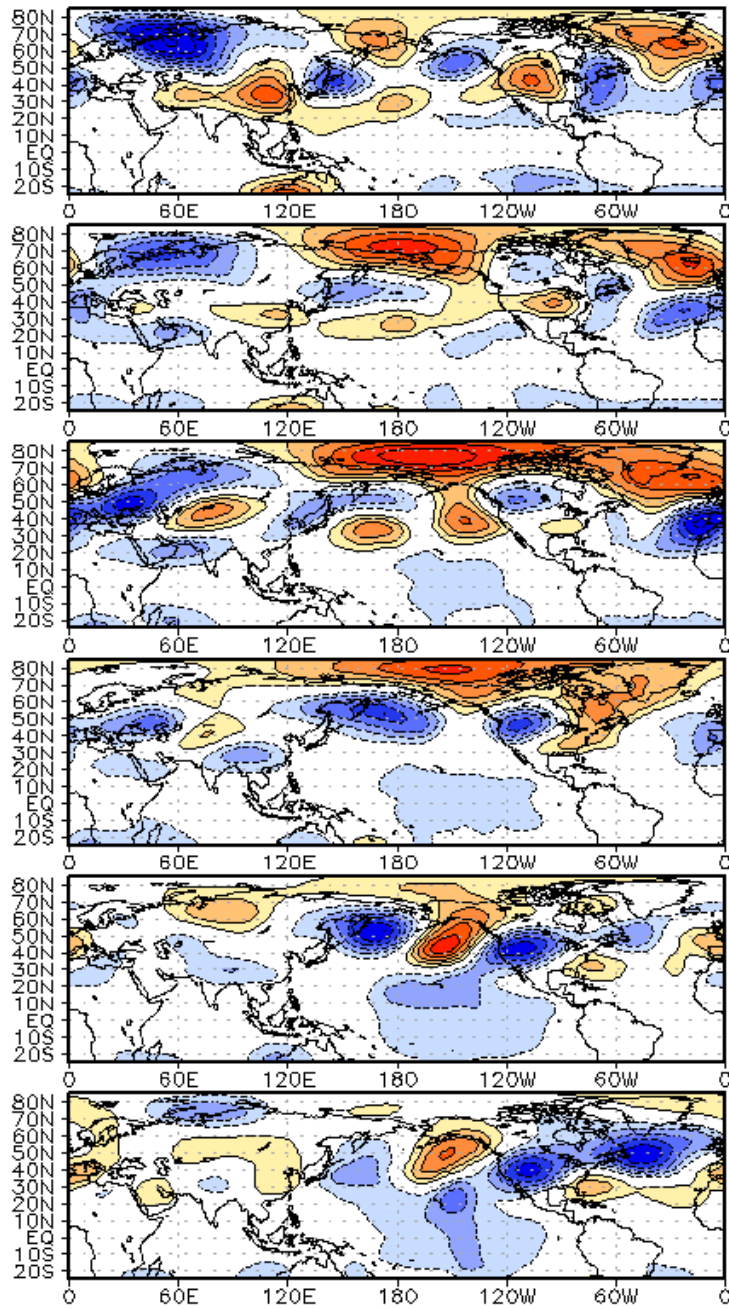
CFSv2 Weeks 1 & 2 Precipitation

16 Member Ensemble Mean Forecast from 23Sep2013

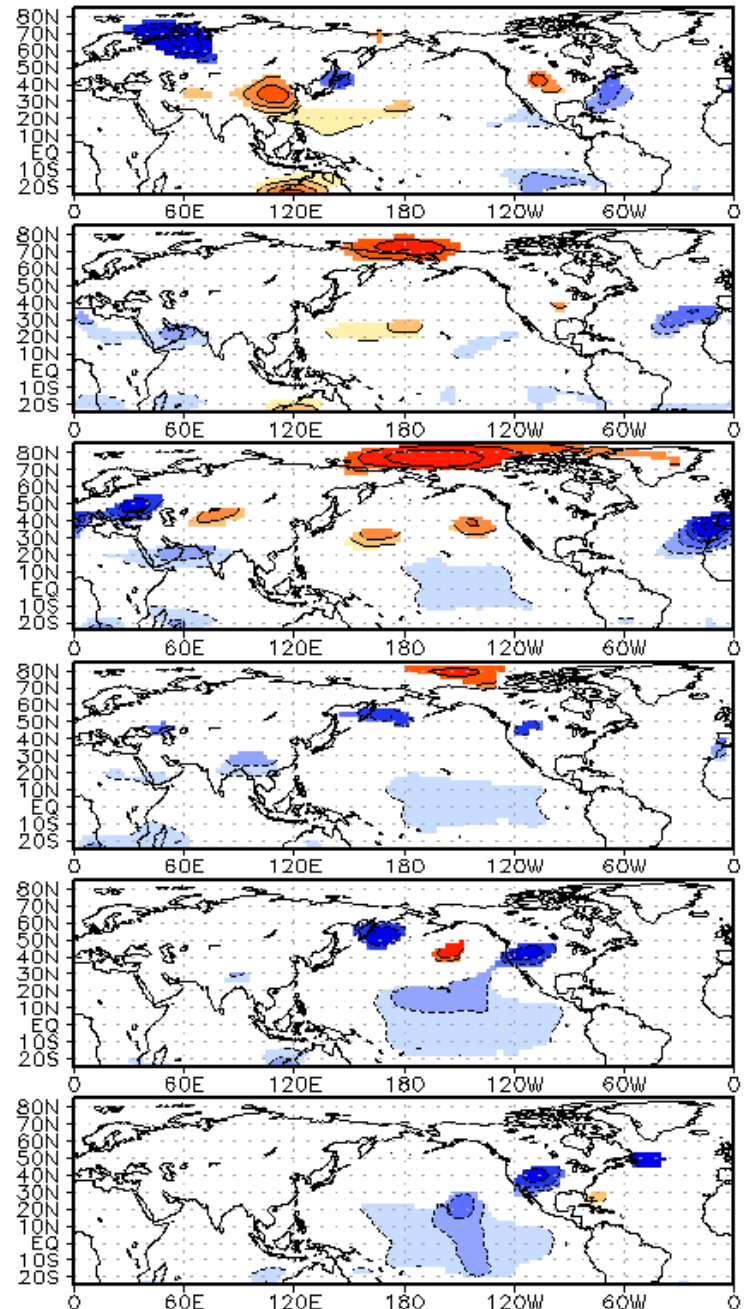




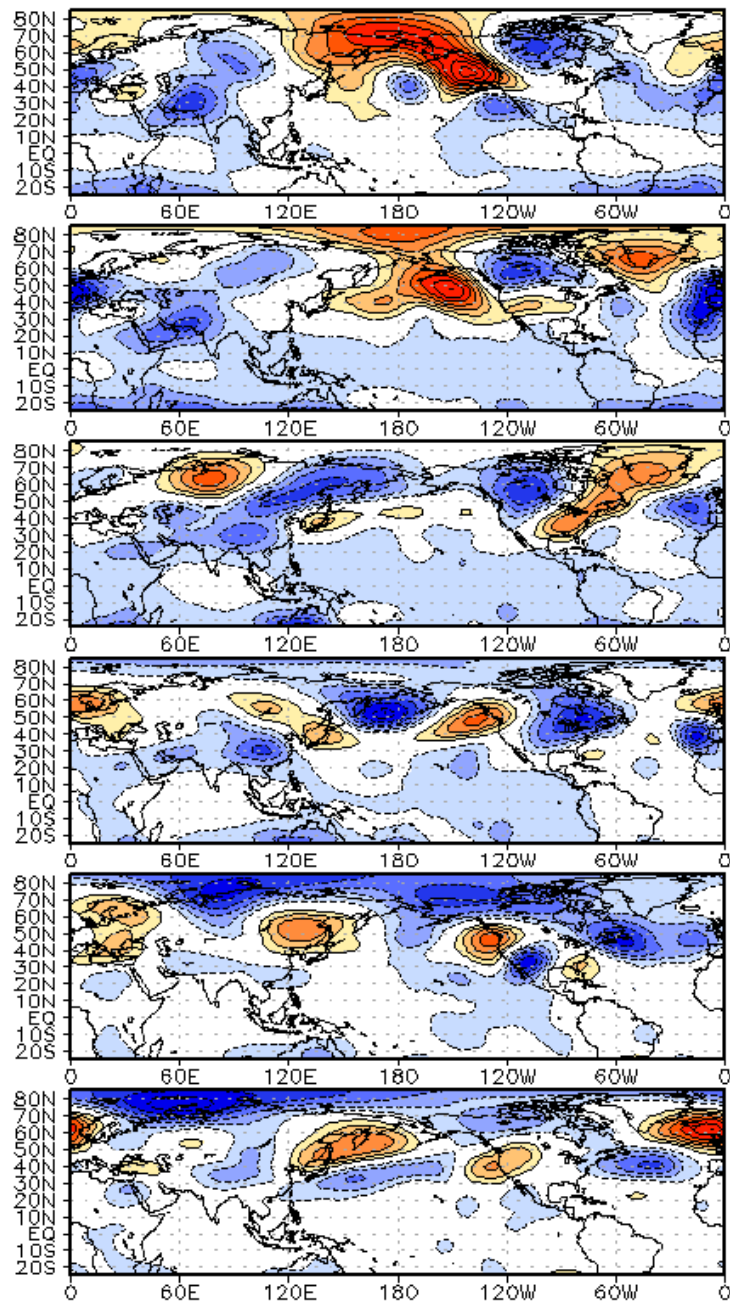
WHMJO Phase 6 z200 Lagged Composite (son)



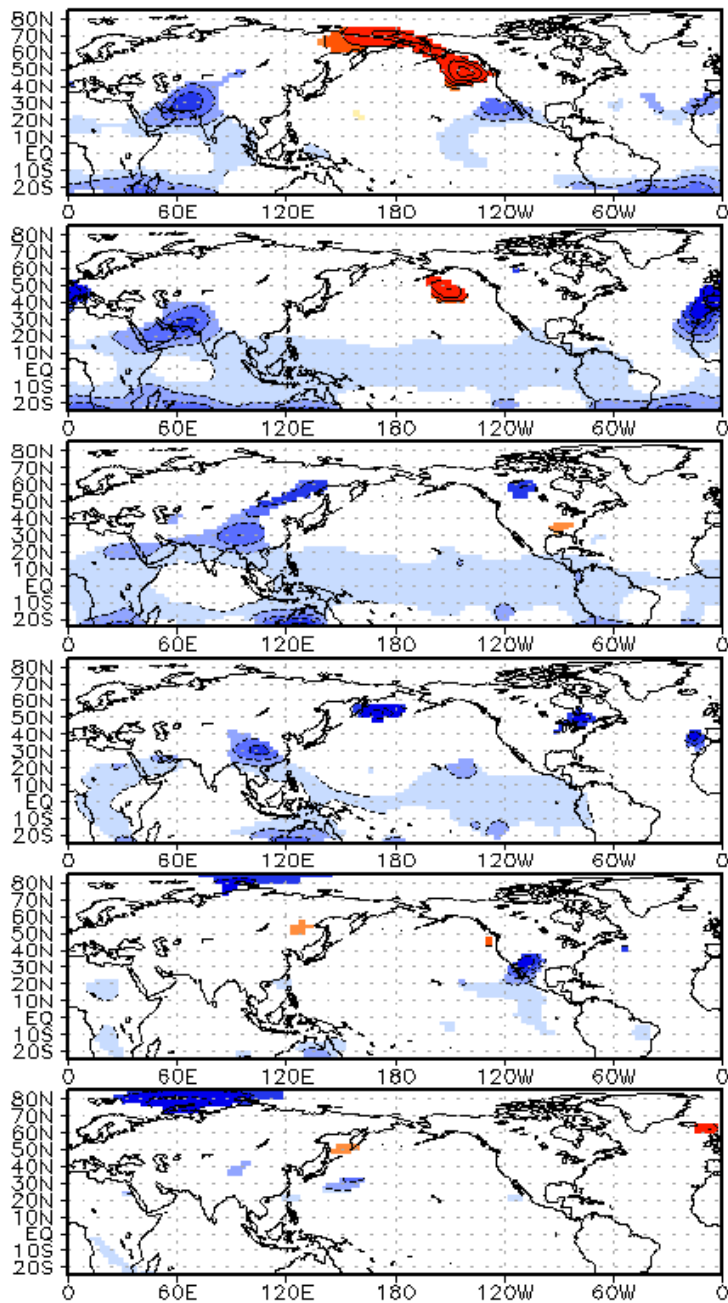
WHMJO Phase 6 z200 Lagged Composite (son)

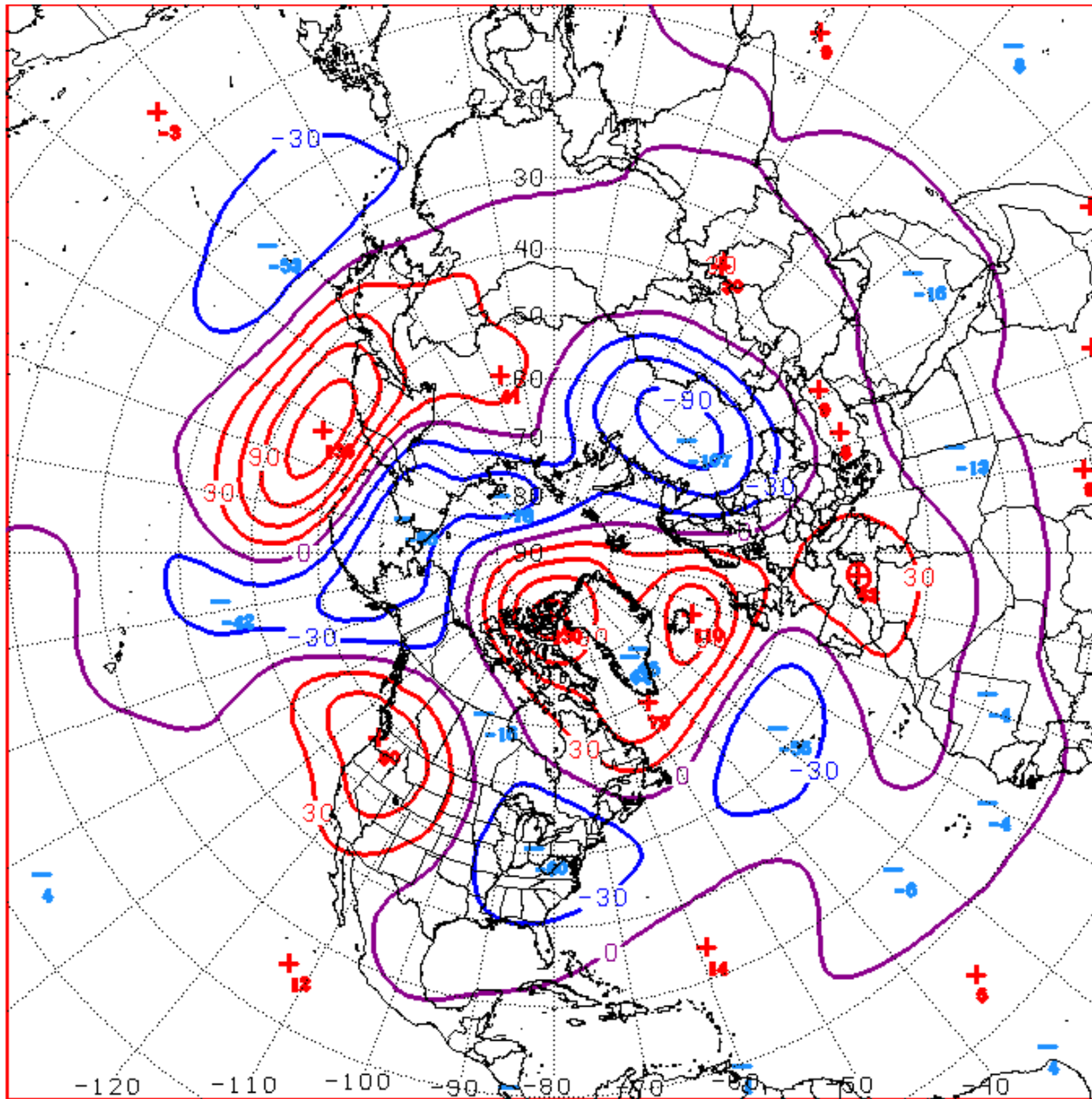


WHMJO Phase 7 z200 Lagged Composite (son)

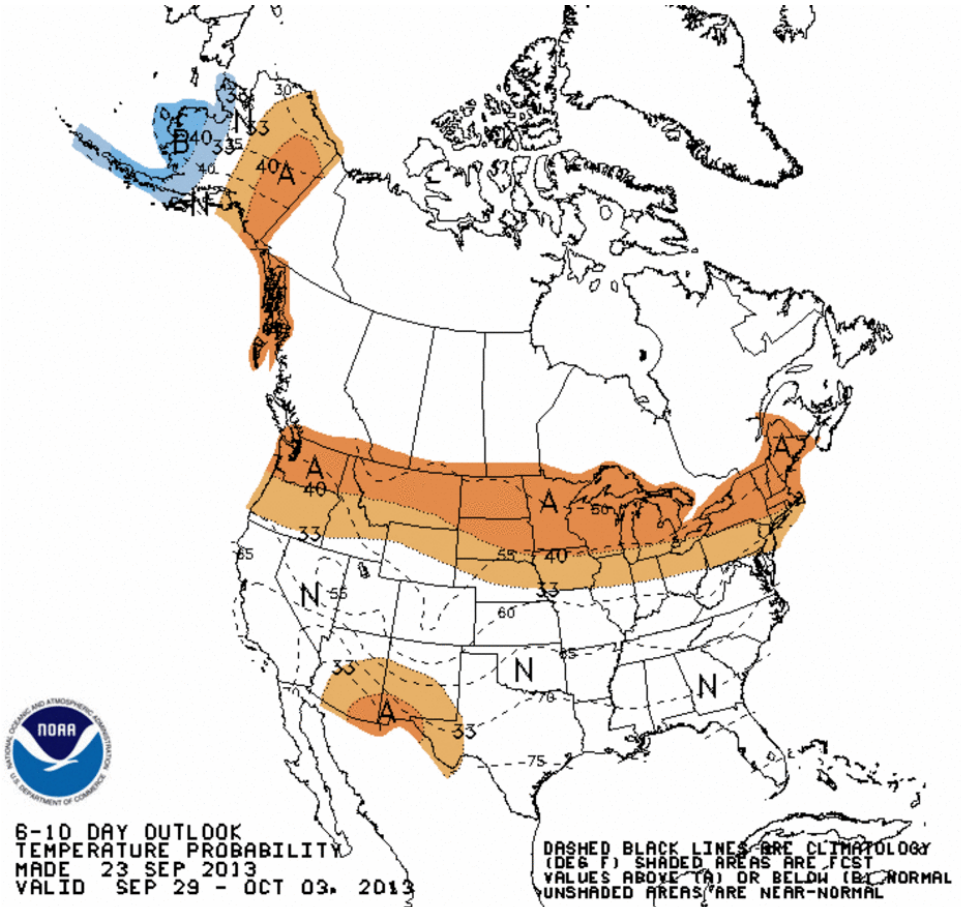


WHMJO Phase 7 z200 Lagged Composite (son)



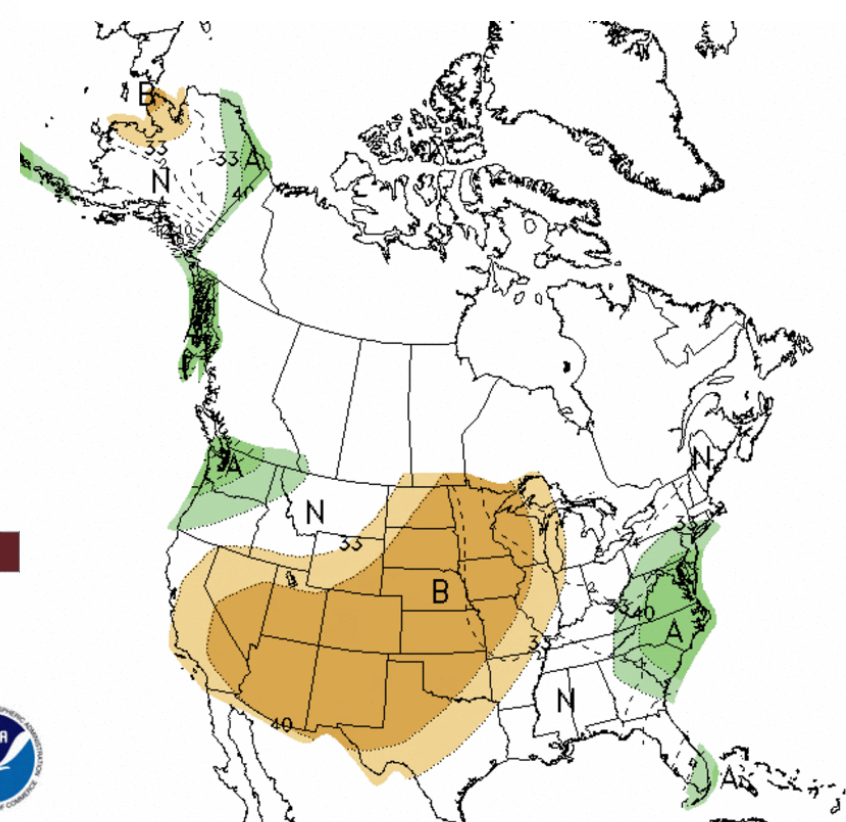
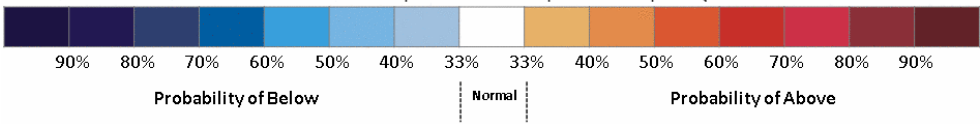


D+11 500 MB ANOMALIES FROM 06Z ENSM
CPC MAP MADE SEP 24 2013 1248 UTC CNTD OCT 05 2013



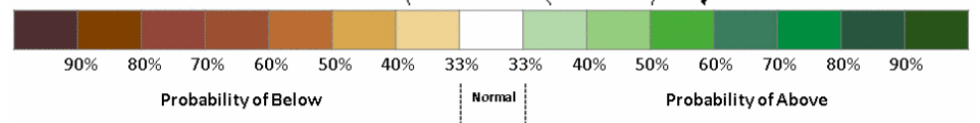
6-10 DAY OUTLOOK
 TEMPERATURE PROBABILITY
 MADE 23 SEP 2013
 VALID SEP 29 - OCT 03, 2013

DASHED BLACK LINES ARE CLIMATOLOGY
 (DEG F) SHADED AREAS ARE FCS
 VALUES ABOVE (A) OR BELOW (B) NORMAL
 UNSHADED AREAS ARE NEAR-NORMAL



6-10 DAY OUTLOOK
 PRECIPITATION PROBABILITY
 MADE 23 SEP 2013
 VALID SEP 29 - OCT 03, 2013

DASHED BLACK LINES ARE CLIMATOLOGY
 (TENTH OF INCHES) SHADED AREAS ARE FCS
 VALUES ABOVE (A) OR BELOW (B) MEDIAN
 UNSHADED AREAS ARE NEAR-MEDIAN

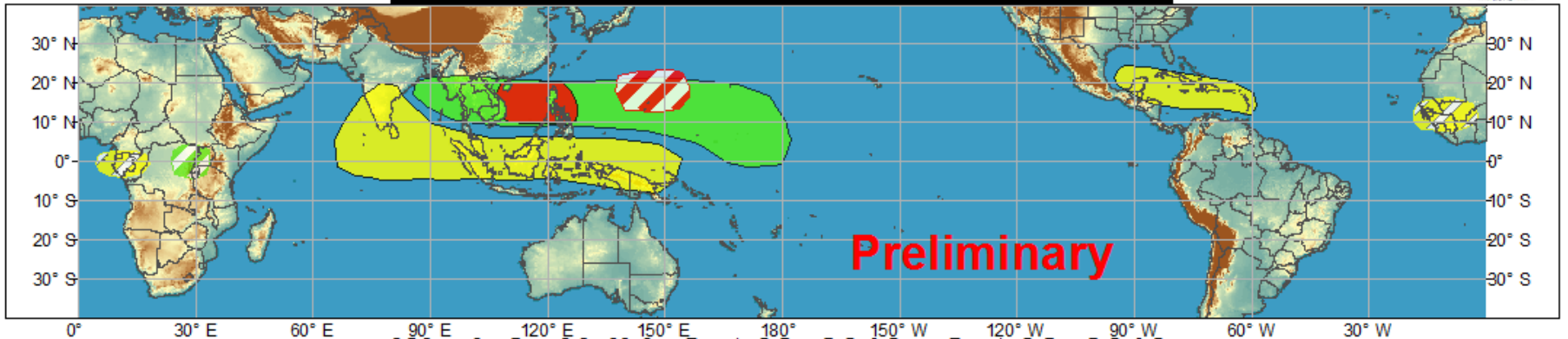




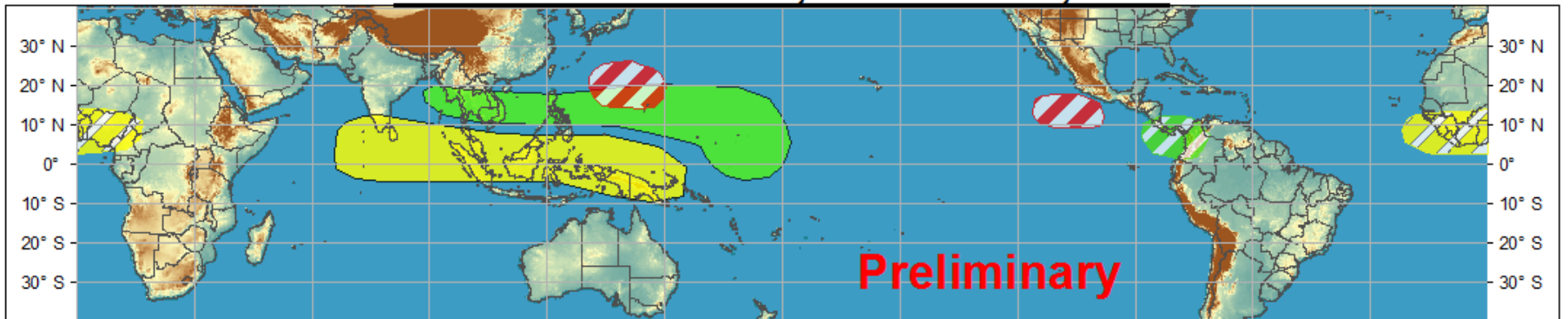
Global Tropics Hazards and Benefits Outlook - Climate Prediction Center



Week 1 - Valid: Sep 25, 2013 - Oct 01, 2013



Week 2 - Valid: Oct 02, 2013 - Oct 08, 2013



Produced: 09/24/2013

Forecaster: Baxter

Confidence

High Moderate

Tropical Cyclone Formation



Development of a tropical cyclone that eventually reaches tropical storm/cyclone strength.

Above-average rainfall



Weekly total rainfall in the upper third of the historical range.

Below-average rainfall



Weekly total rainfall in the lower third of the historical range.

Above-normal temperatures



7-day mean temperatures in the upper third of the historical range.

Below-normal temperatures



7-day mean temperatures in the lower third of the historical range.

Product is updated once per week. The product targets broad scale conditions integrated over a 7-day period for US interests only. Consult your local responsible forecast agency.

