

Global Tropics Hazards And Benefits Outlook

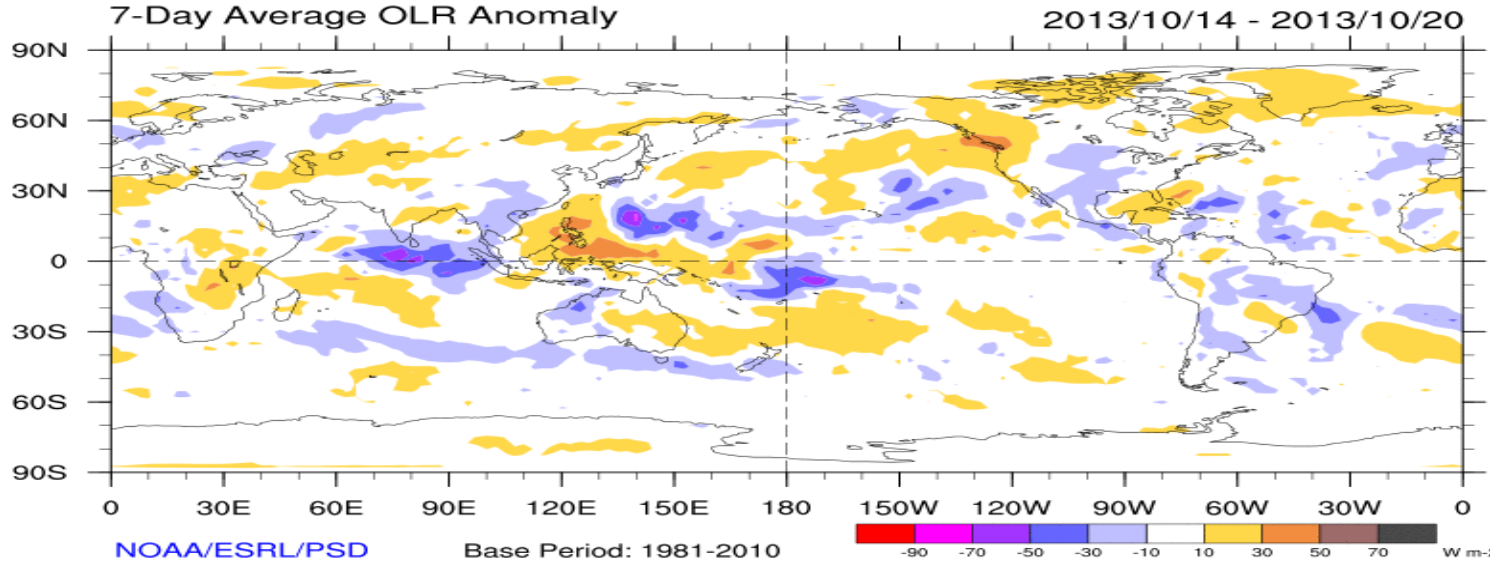
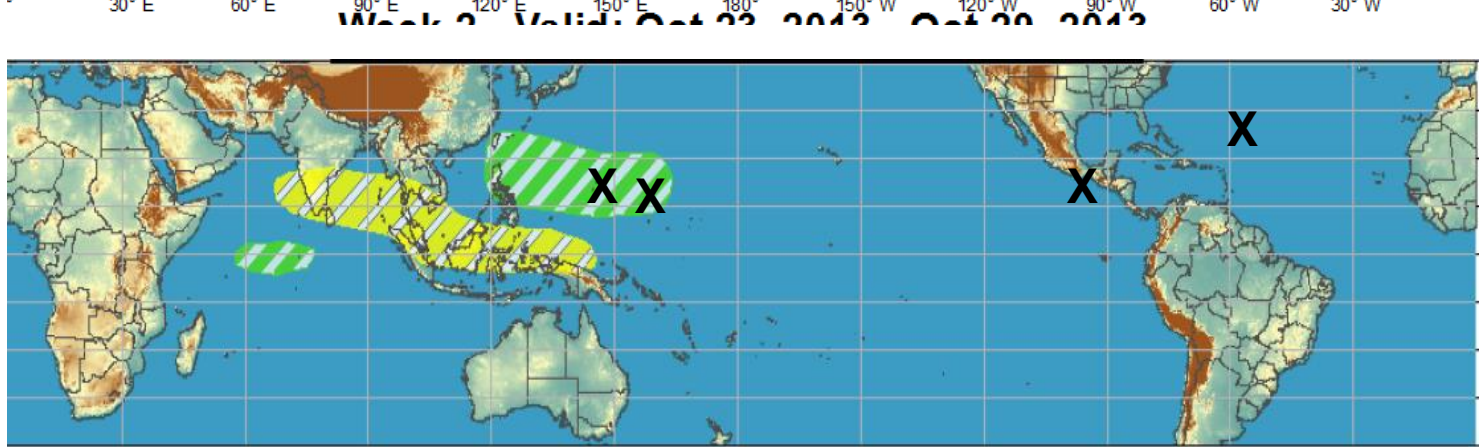
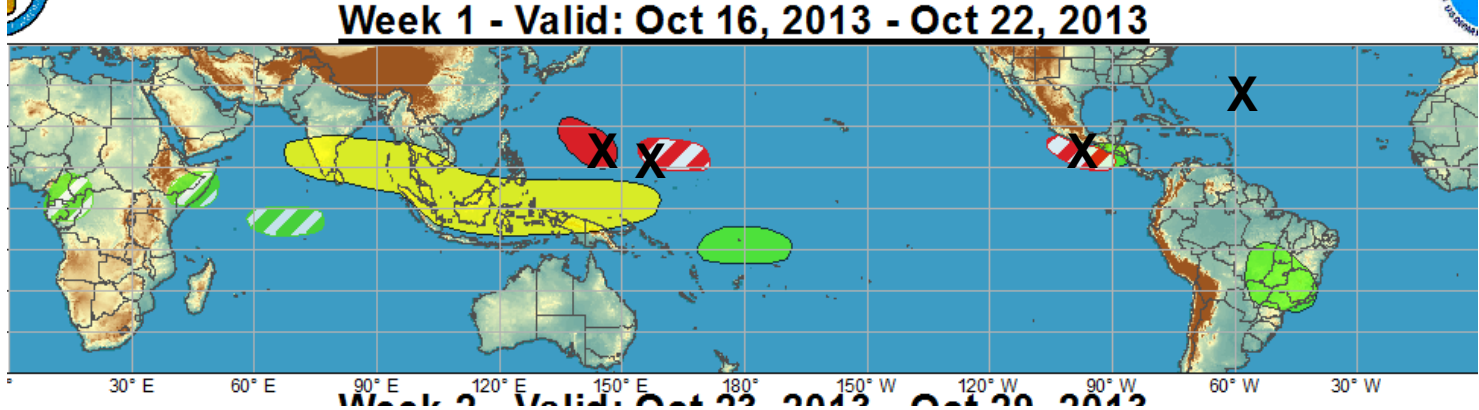
October 22, 2013

Brad Pugh

Outline

1. Review of Recent Conditions
2. Synopsis of Climate Modes
3. GTH Outlook and Forecast Discussion
4. Connections to U.S. Impacts

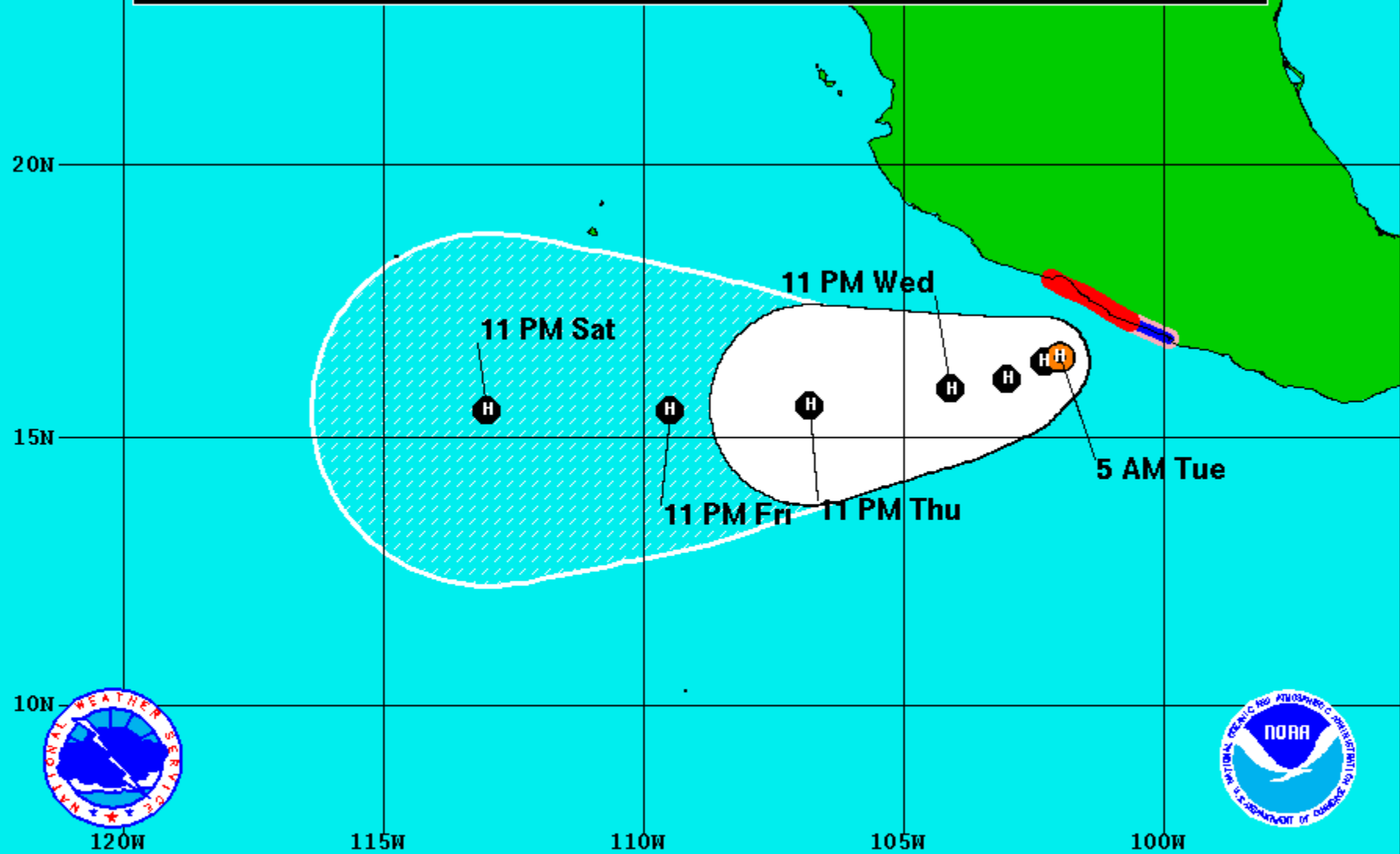
Outlook Review




Cool shading
More clouds/rain



Warm shading
Less clouds/rain

Note: The cone contains the probable path of the storm center but does not show the size of the storm. Hazardous conditions can occur outside of the cone.



Hurricane Raymond
 Tuesday October 22, 2013
 5 AM PDT Intermediate Advisory 10A
 NWS National Hurricane Center

Current Information: 
 Center Location 16.5 N 102.0 W
 Max Sustained Wind 115 mph
 Movement Stationary

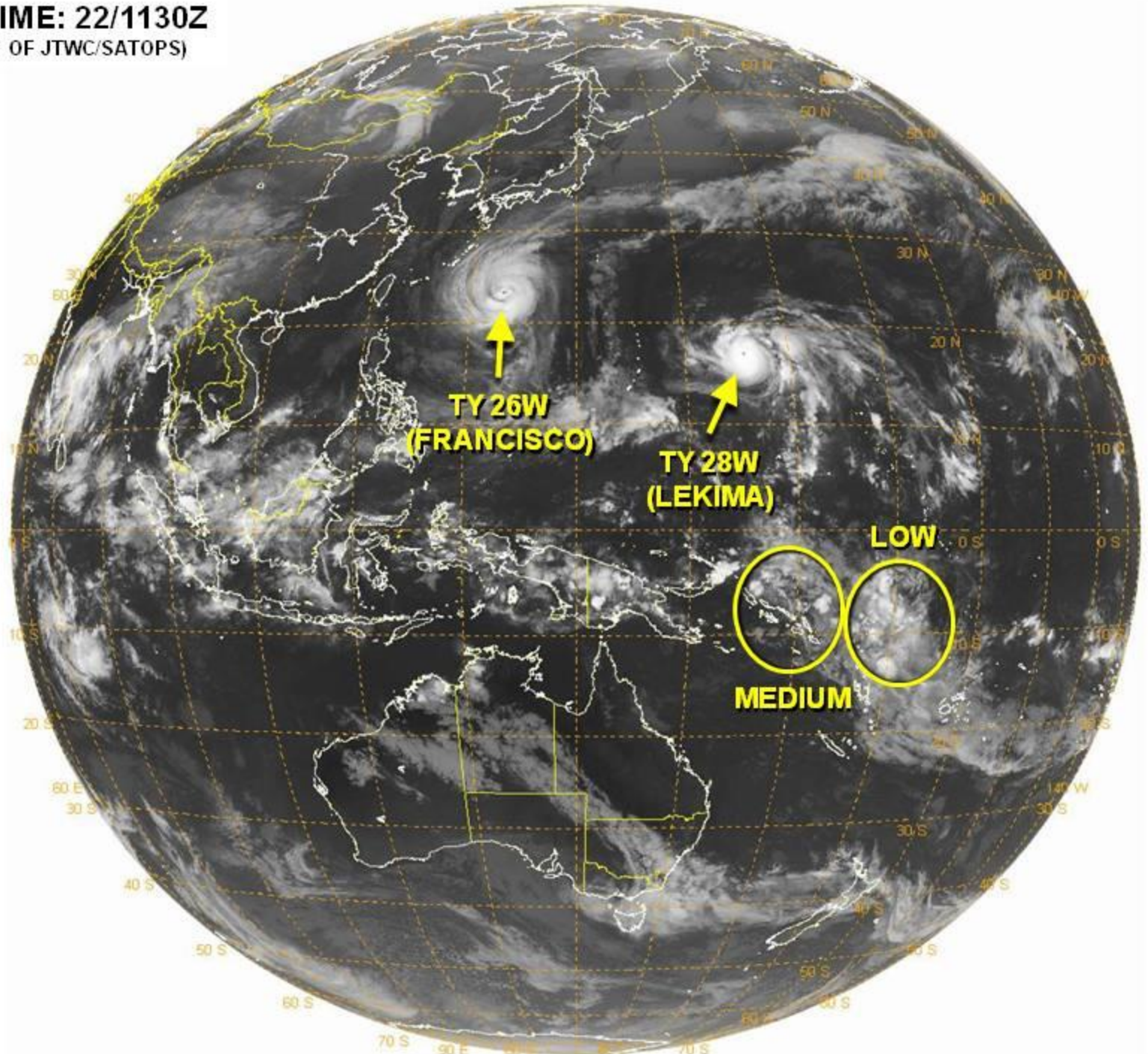
Forecast Positions:
 Tropical Cyclone  Post-Tropical
 Sustained Winds: D < 39 mph
 S 39-73 mph H 74-110 mph M > 110mph

Potential Track Area:
 Day 1-3  Day 4-5

Watches:
 Hurricane  Trop.Storm

Warnings:
 Hurricane  Trop.Storm

VALID TIME: 22/1130Z
(PRODUCT OF JTWC/SATOPS)



Synopsis of Climate Modes

ENSO:

- ENSO-neutral is favored through the Northern Hemisphere spring 2014.

MJO and other subseasonal tropical variability:

- The MJO weakened during the past week with other modes of tropical intraseasonal variability influencing convection across the global tropics.
- Dynamical model MJO index forecasts generally indicate a continued weak MJO during the next week to ten days.

Extratropics:

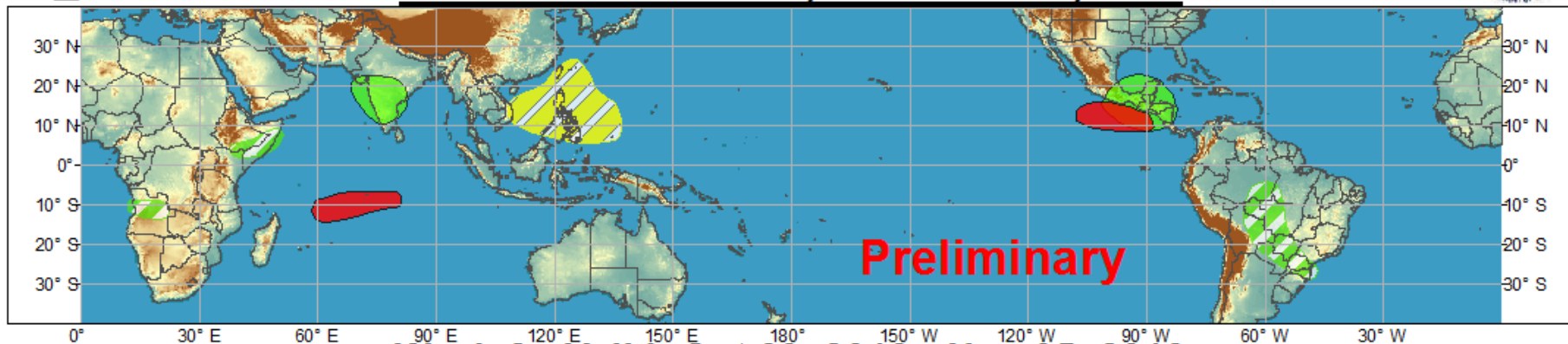
- Recurvature of west Pacific typhoons maintaining a highly amplified flow across the north Pacific and North America during the next two weeks.



Global Tropics Hazards and Benefits Outlook - Climate Prediction Center



Week 1 - Valid: Oct 23, 2013 - Oct 29, 2013



Week 2 - Valid: Oct 30, 2013 - Nov 05, 2013



Confidence
High Moderate

Tropical Cyclone Formation



Development of a tropical cyclone that eventually reaches tropical storm/cyclone strength.

Above-average rainfall



Weekly total rainfall in the upper third of the historical range.

Below-average rainfall



Weekly total rainfall in the lower third of the historical range.

Above-normal temperatures



7-day mean temperatures in the upper third of the historical range.

Below-normal temperatures



7-day mean temperatures in the lower third of the historical range.

Produced: 10/22/2013

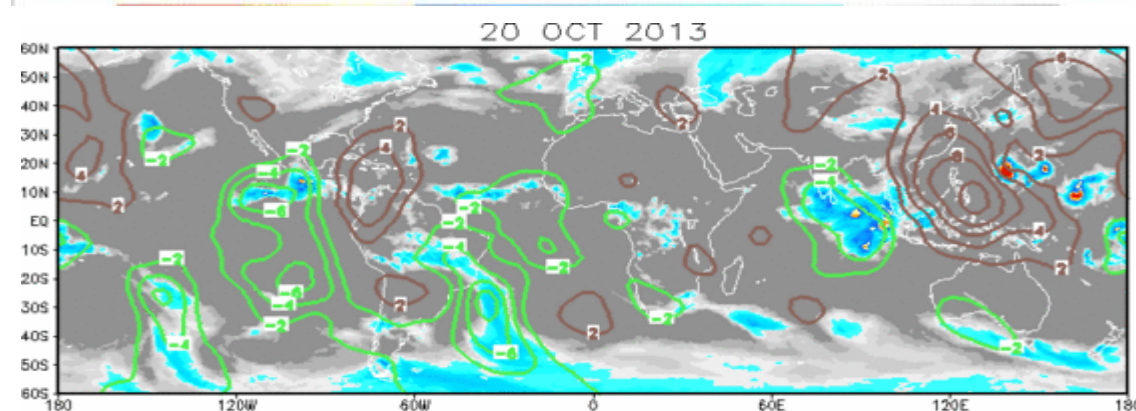
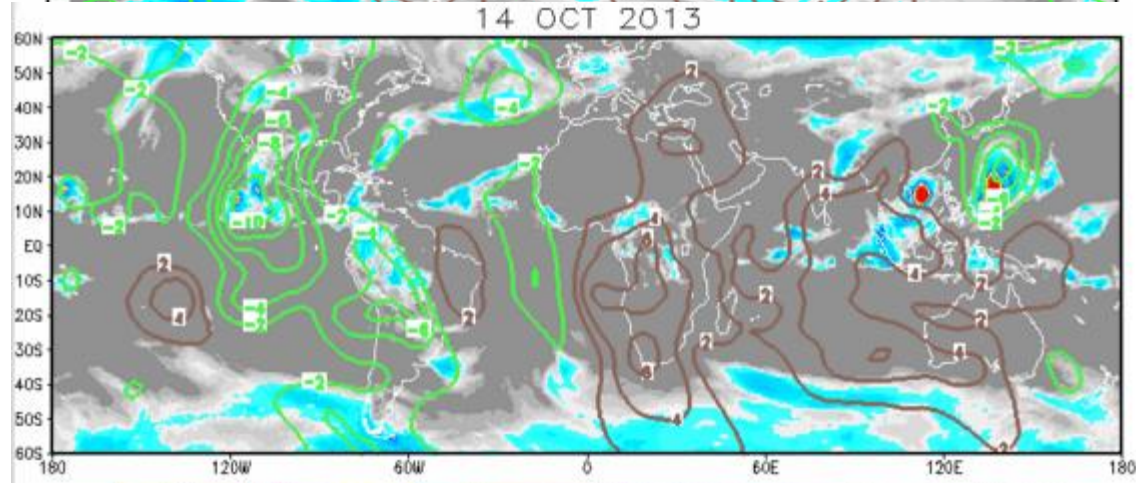
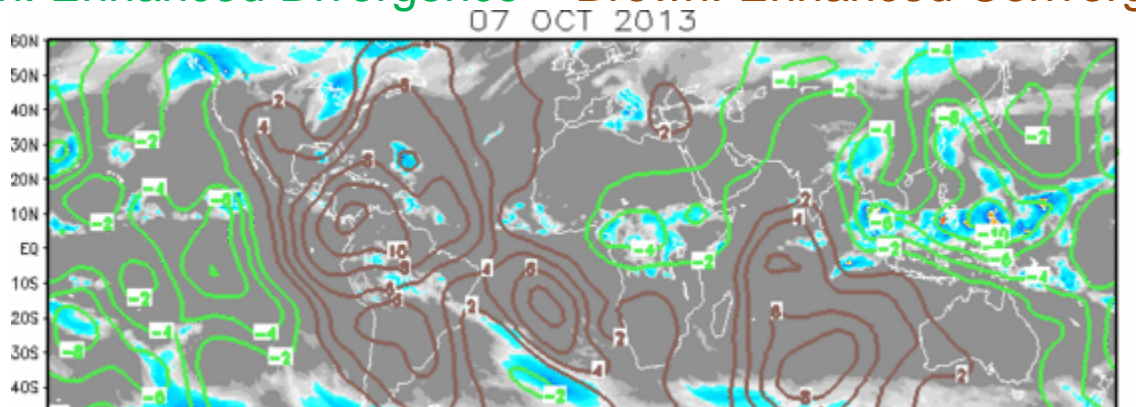
Forecaster: Pugh

Product is updated once per week. The product targets broad scale conditions integrated over a 7-day period for US interests only. Consult your local responsible forecast agency.



IR Satellite & 200-hpa Velocity Potential Anomalies

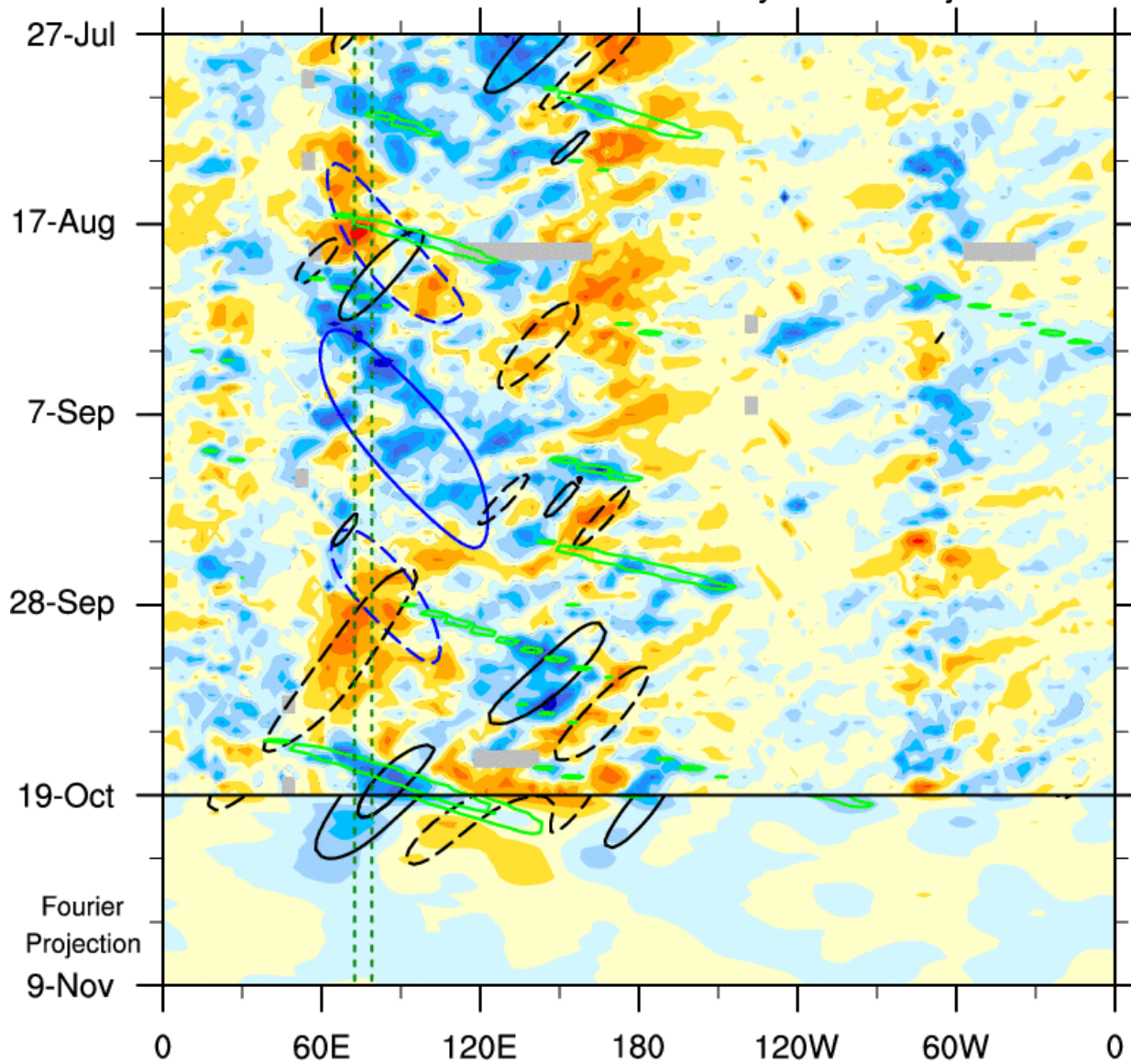
Green: Enhanced Divergence Brown: Enhanced Convergence



Less Coherent
During the
Past Week

OLR anomalies: 7.5°S - 7.5°N

27-Jul-2013 to 19-Oct-2013 + 21-day Fourier Projection



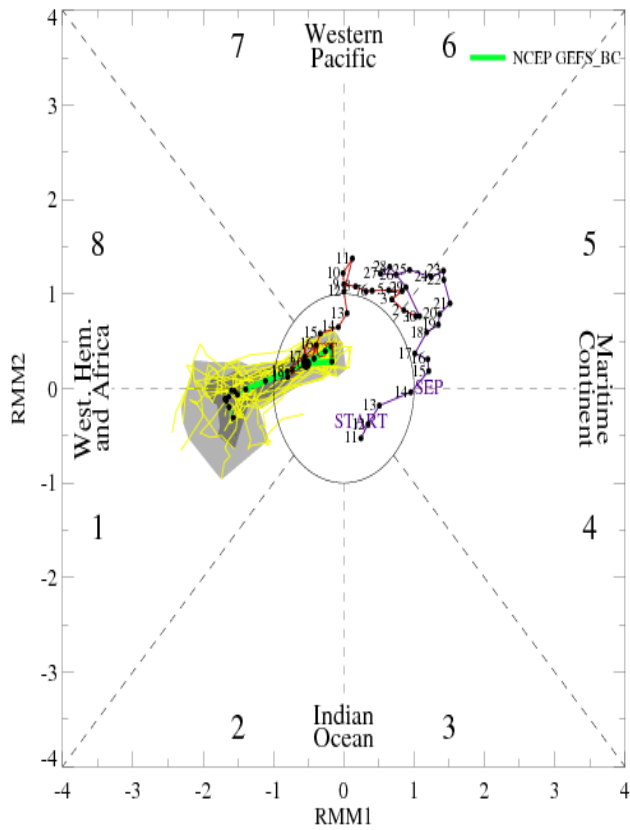
Obs: W/m² -84 -72 -60 -48 -36 -24 -12 0 12 24 36 48 60 72 84

Sum of Waves: W/m² -18 -12 -6 0 6 12 18

MJO (blue, CINT=12); ER (black, CINT=12); Kelvin (green, CINT=12)

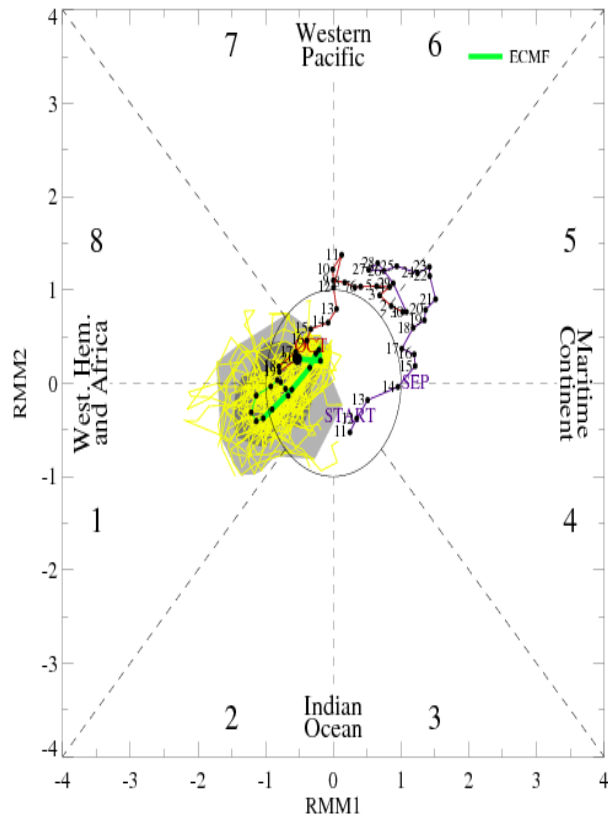
MJO Observation/Forecast

MJO Index Forecast for 21Oct2013-04Nov2013



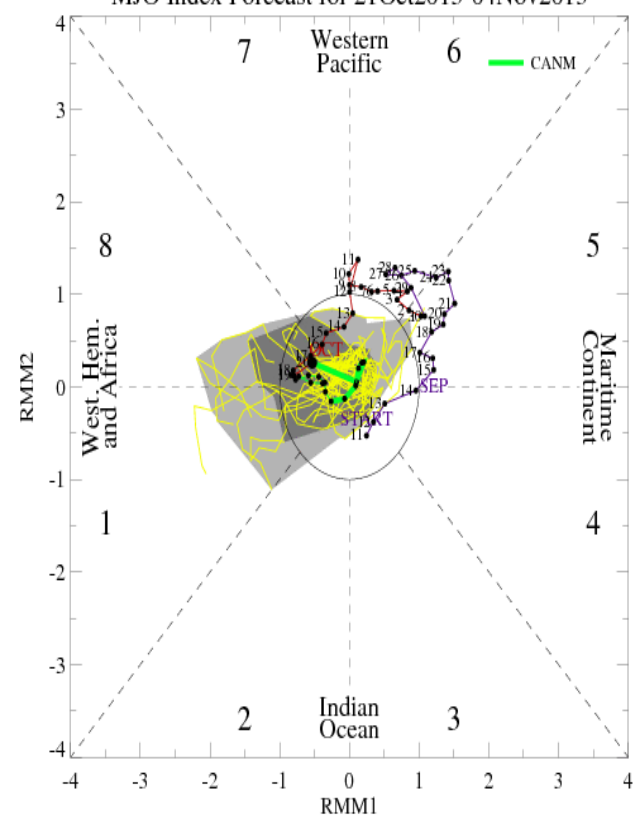
GFS

MJO Index Forecast for 21Oct2013-04Nov2013

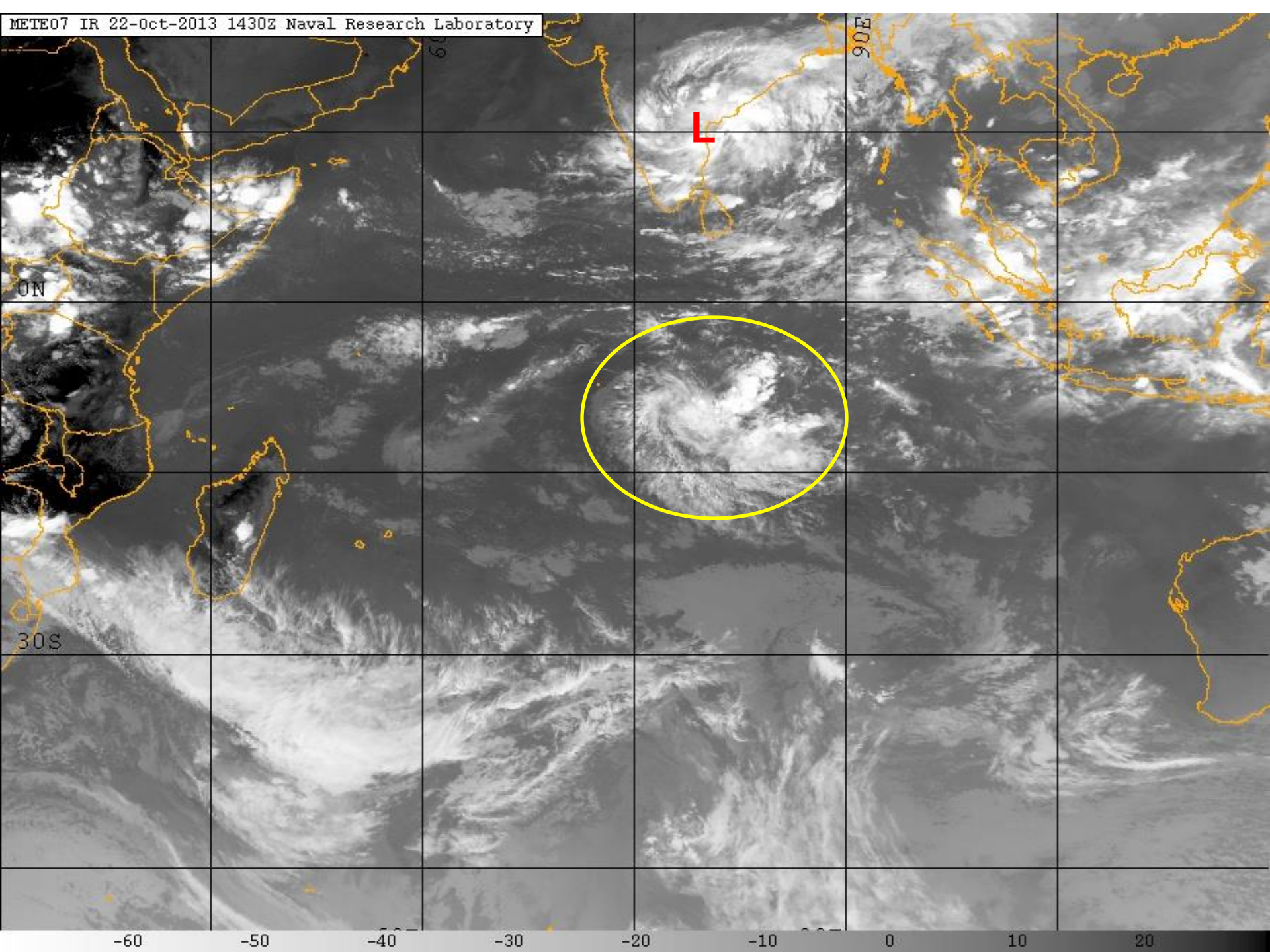


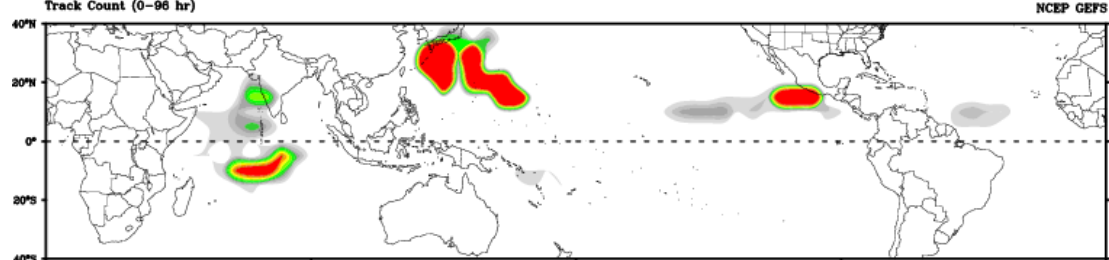
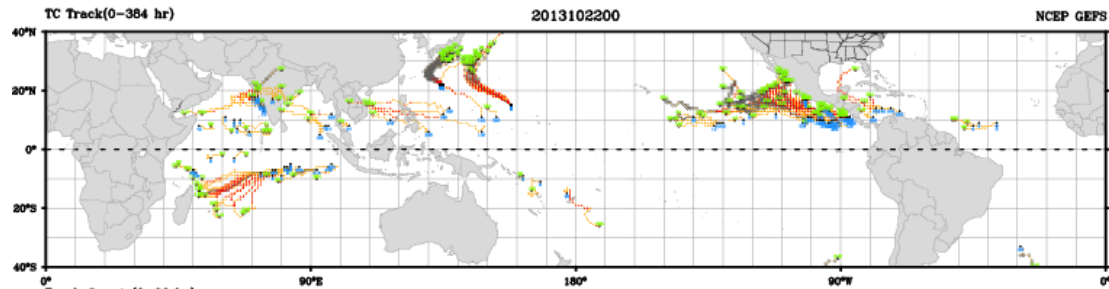
ECMWF

MJO Index Forecast for 21Oct2013-04Nov2013

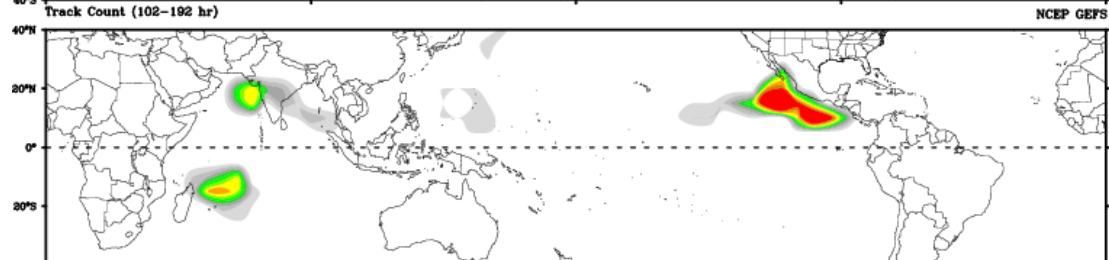


CMC

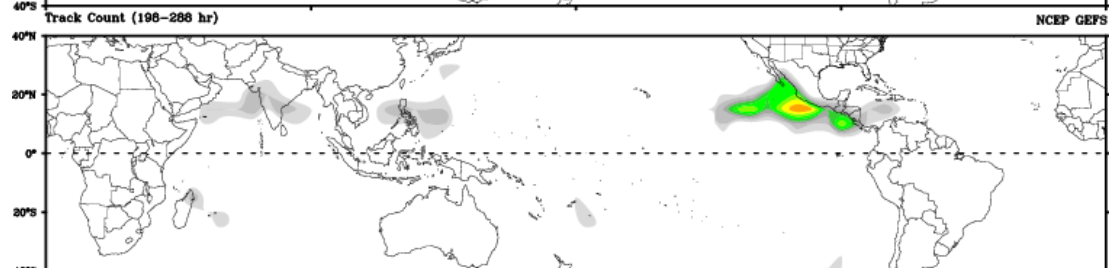




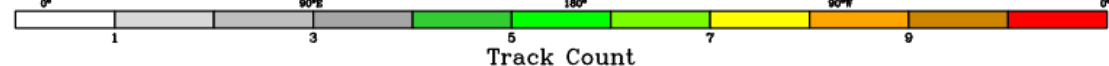
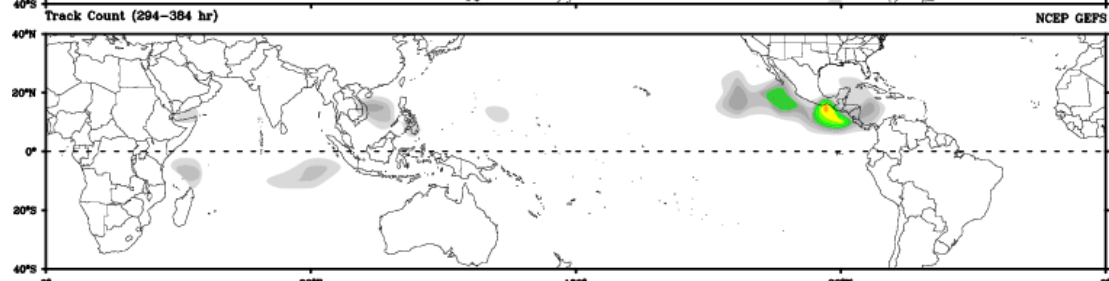
Days 1-4

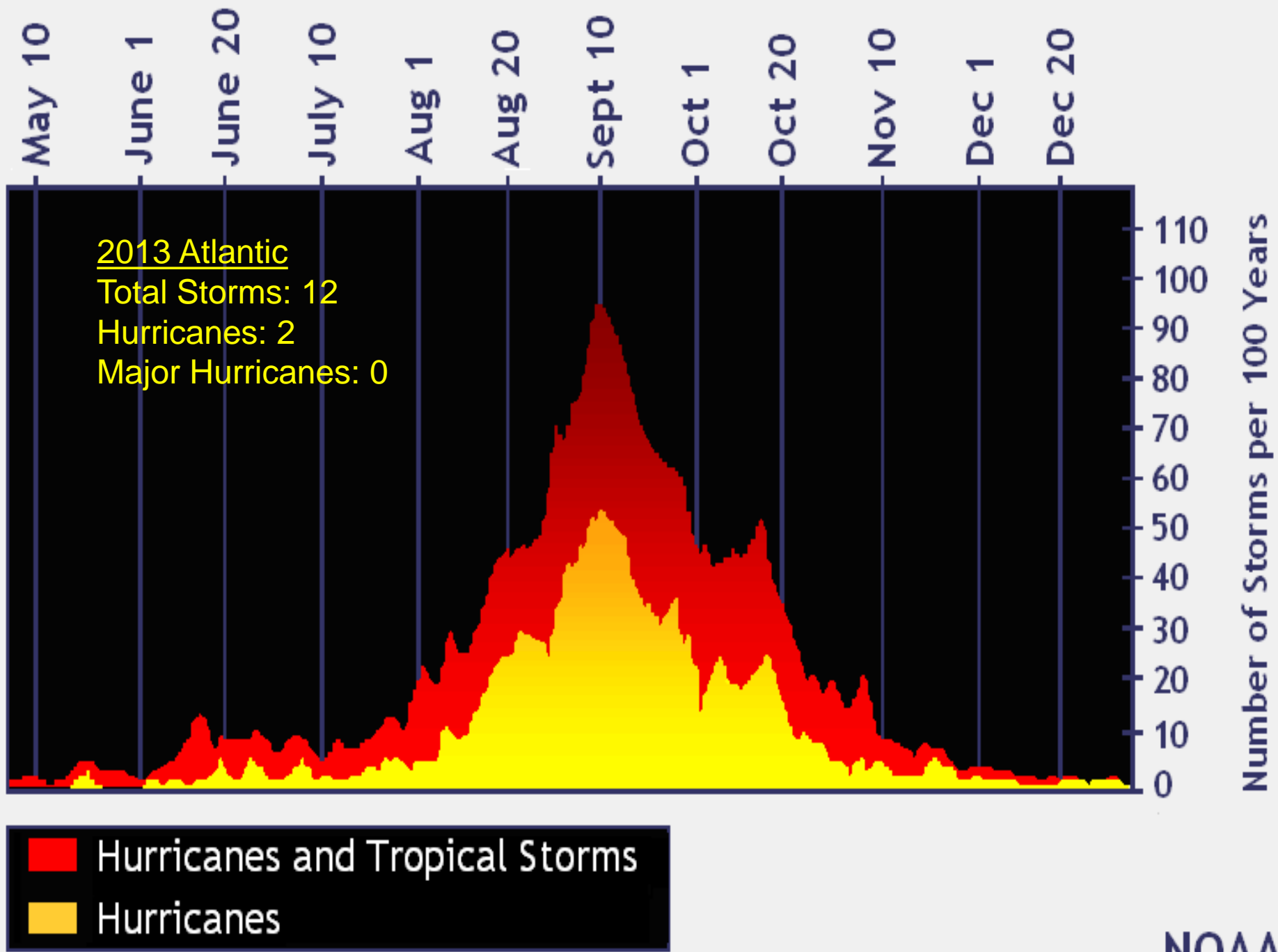


Day 5-8

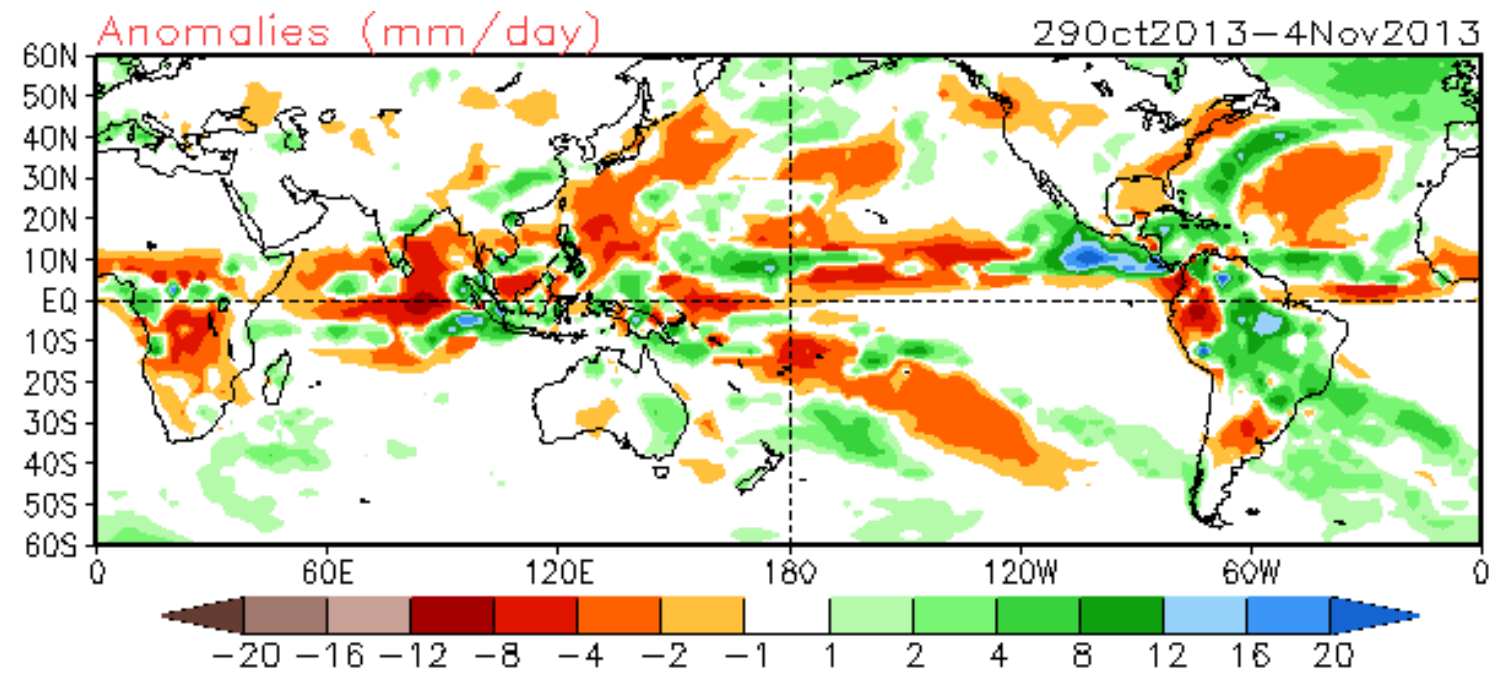
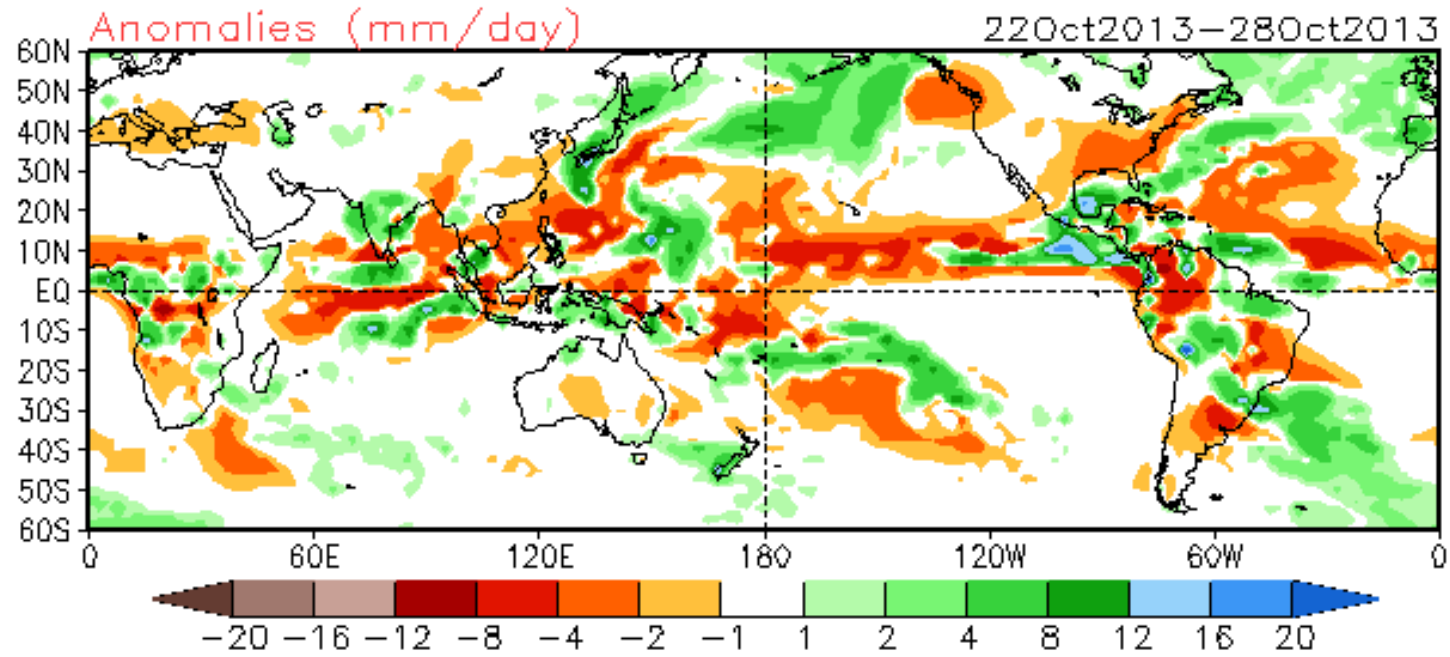


Day 9-12

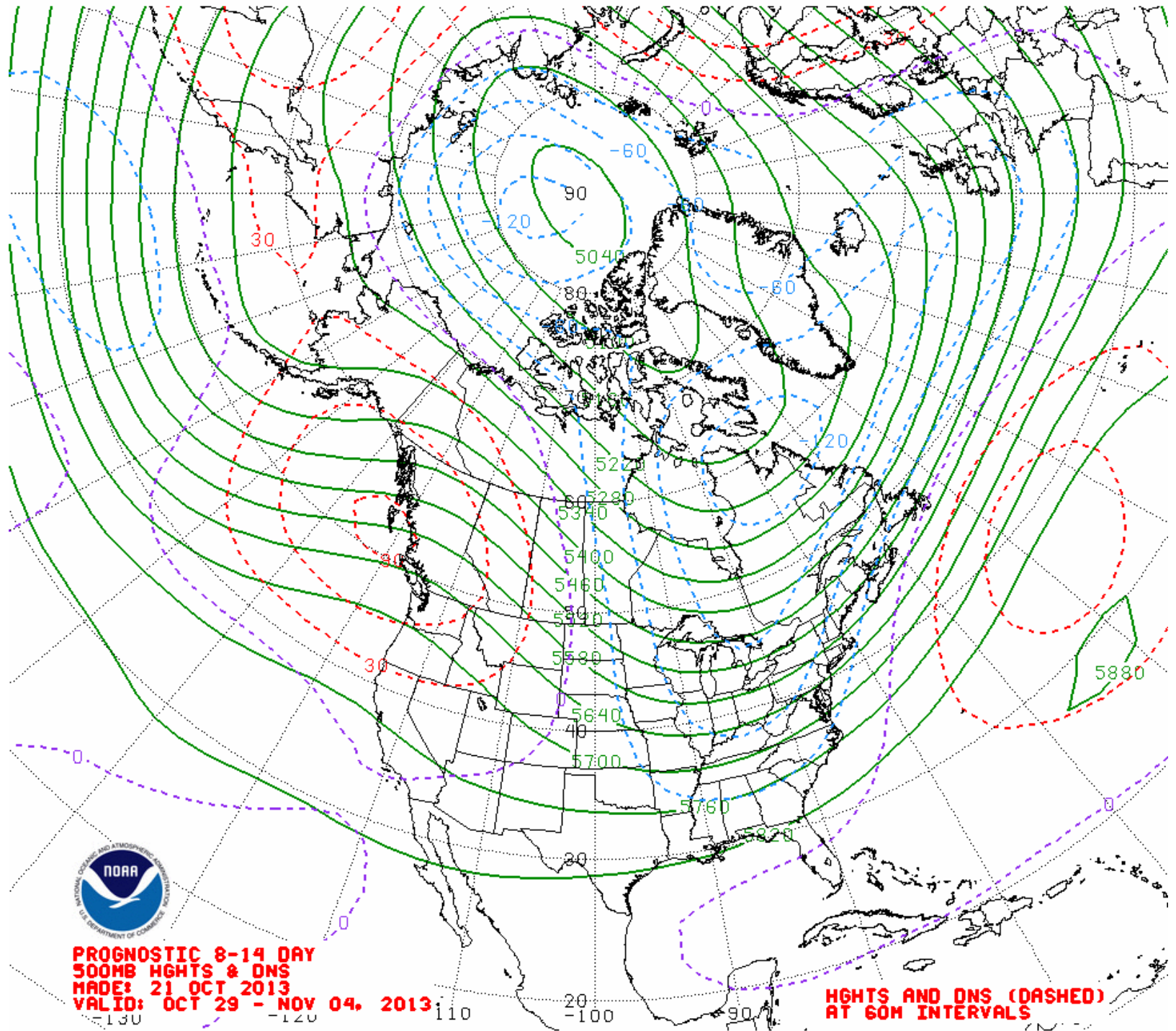




GFS Forecast



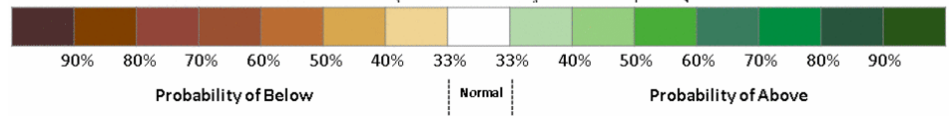
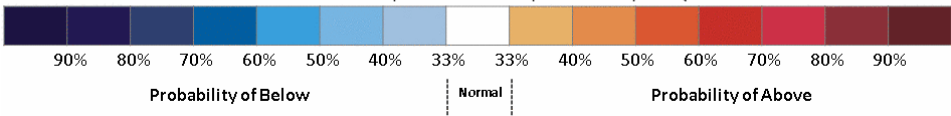
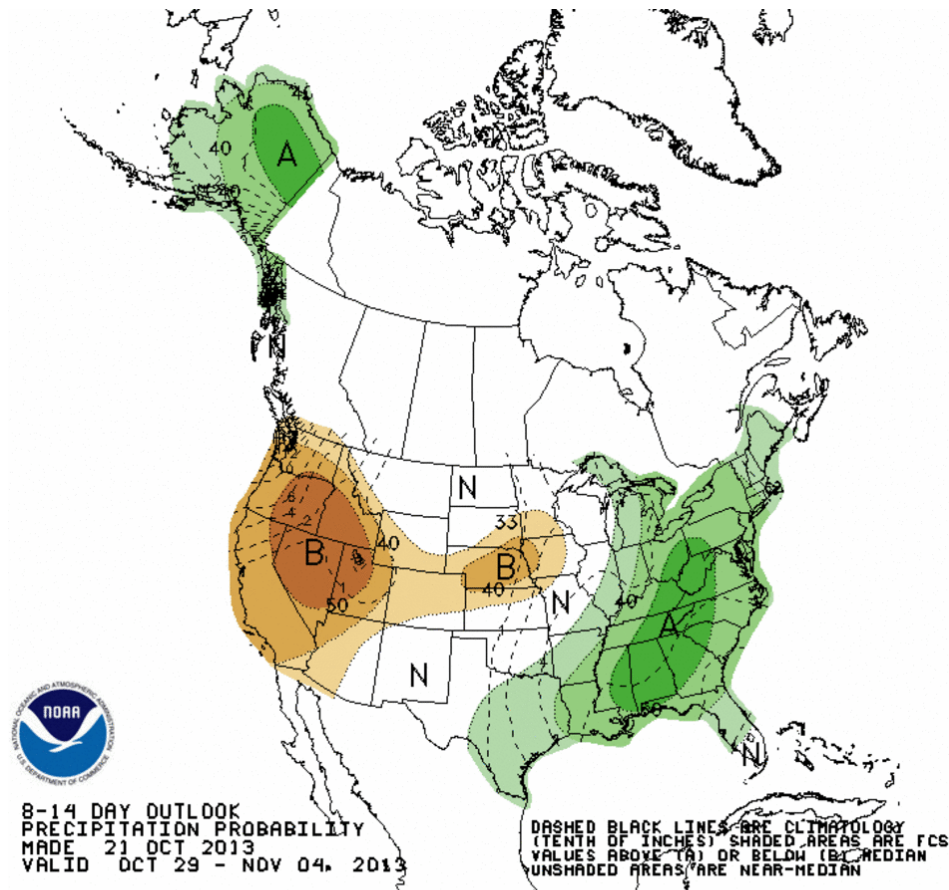
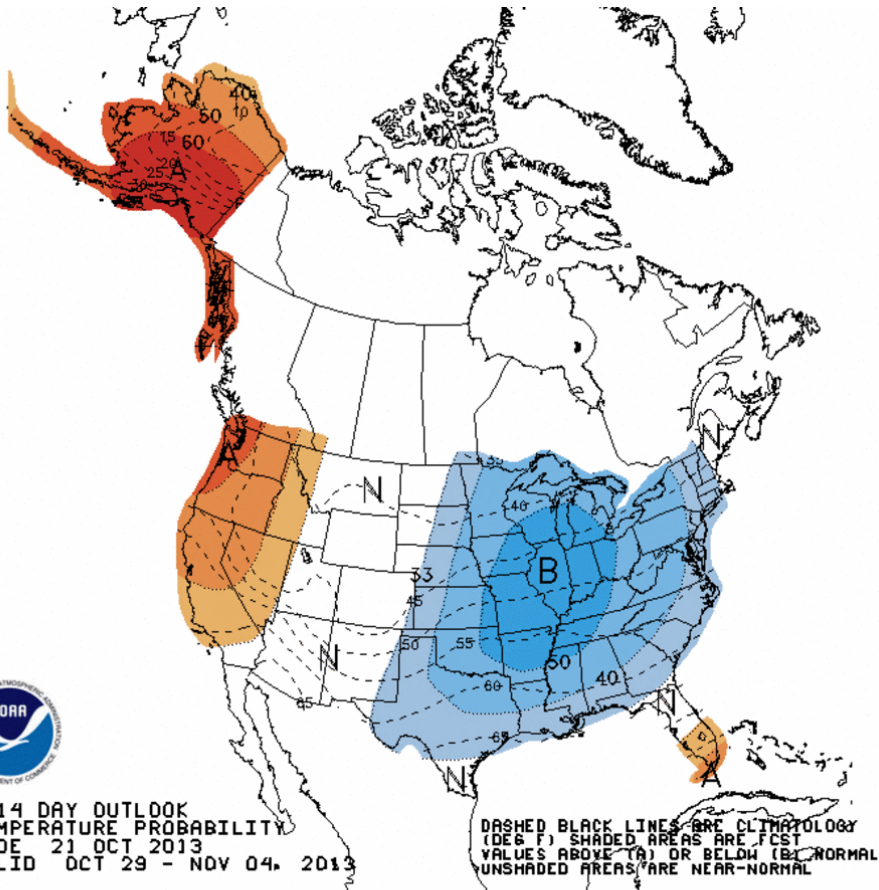
Extratropics



**PROGNOSTIC 8-14 DAY
500MB HGTs & DNS
MADE: 21 OCT 2013
VALID: OCT 29 - NOV 04, 2013**

**HGTs AND DNS (DASHED)
AT 60M INTERVALS**

Week 2 – Temperature and Precipitation

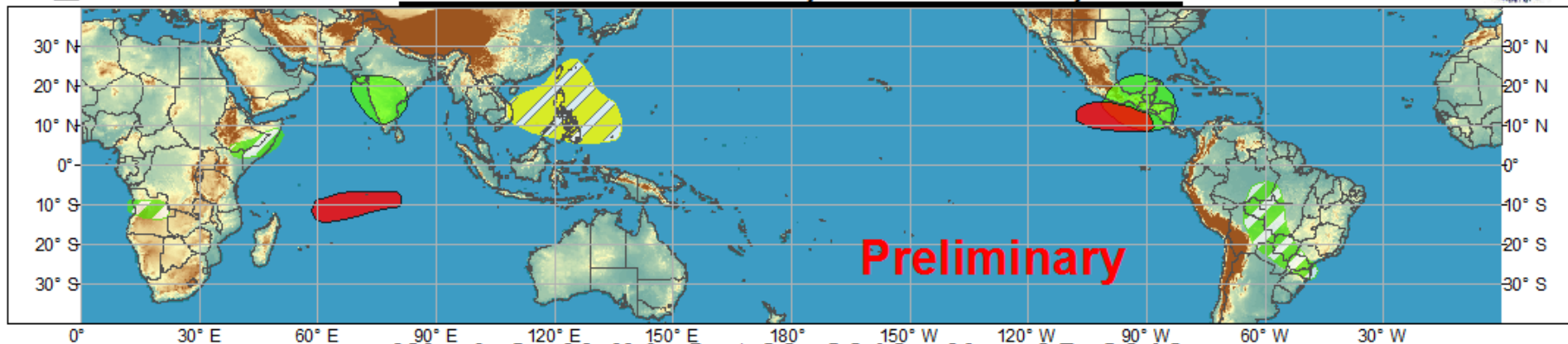




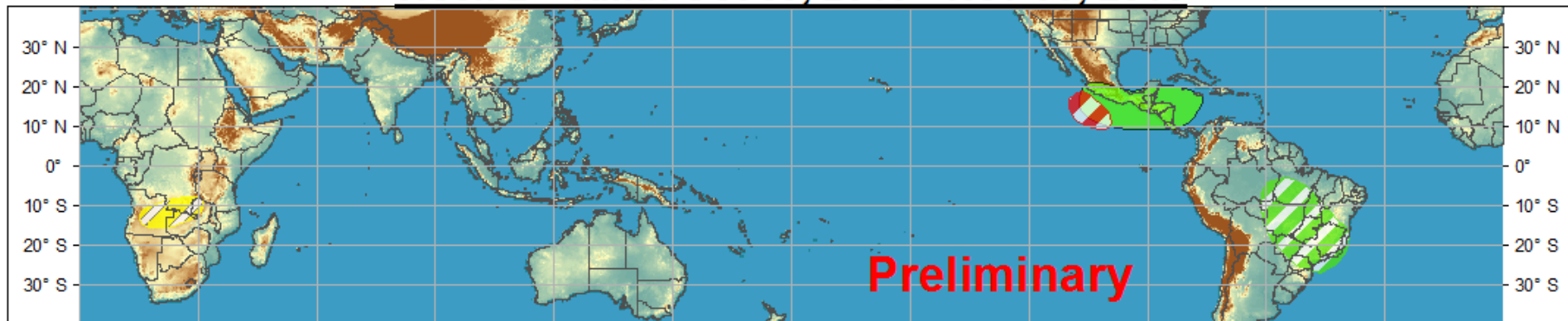
Global Tropics Hazards and Benefits Outlook - Climate Prediction Center



Week 1 - Valid: Oct 23, 2013 - Oct 29, 2013



Week 2 - Valid: Oct 30, 2013 - Nov 05, 2013



Confidence
High Moderate

Tropical Cyclone Formation



Development of a tropical cyclone that eventually reaches tropical storm/cyclone strength.

Above-average rainfall



Weekly total rainfall in the upper third of the historical range.

Below-average rainfall



Weekly total rainfall in the lower third of the historical range.

Above-normal temperatures



7-day mean temperatures in the upper third of the historical range.

Below-normal temperatures



7-day mean temperatures in the lower third of the historical range.

Produced: 10/22/2013

Forecaster: Pugh

Product is updated once per week. The product targets broad scale conditions integrated over a 7-day period for US interests only. Consult your local responsible forecast agency.

