

Global Tropics Hazards And Benefits Outlook

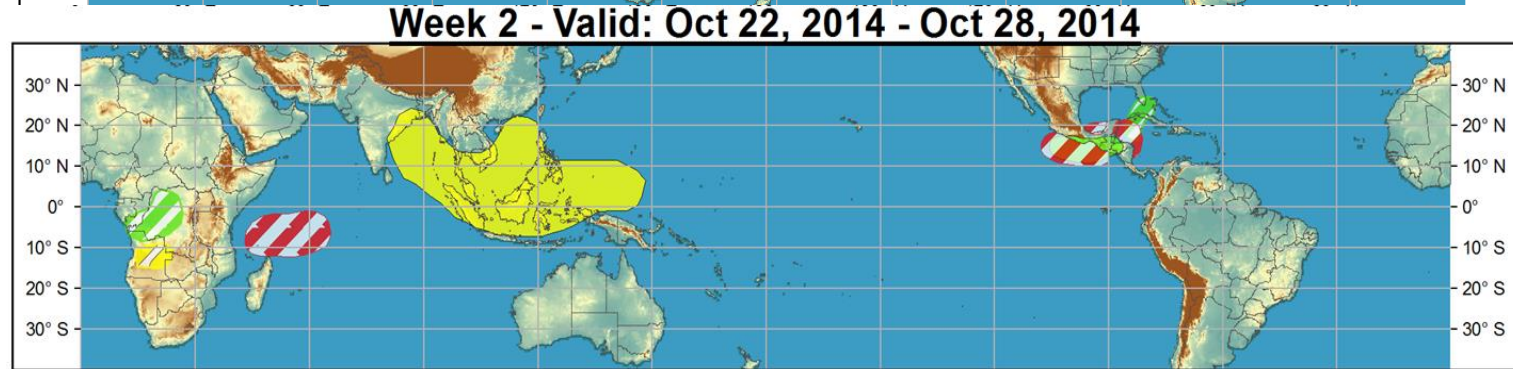
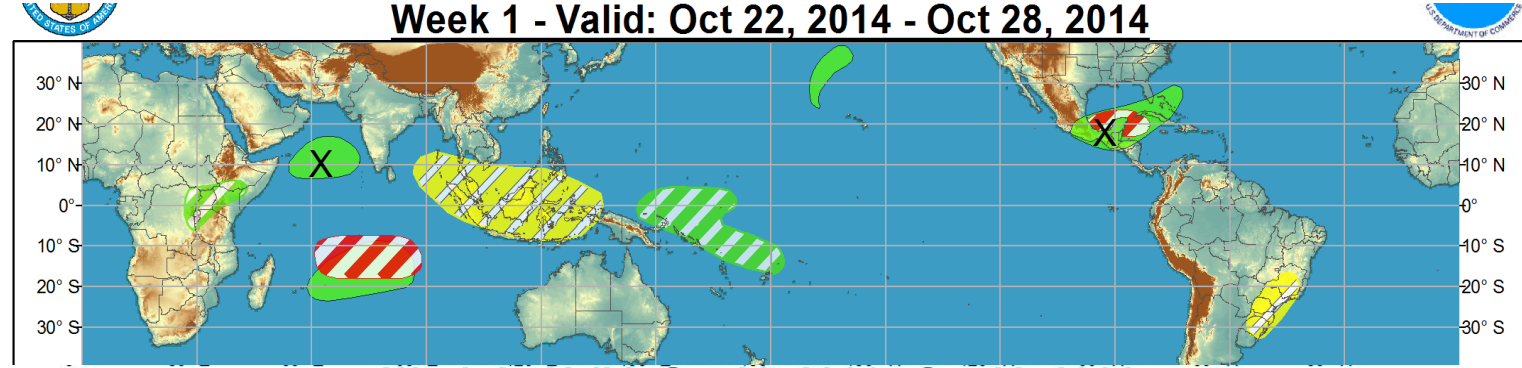
October 28, 2014

Adam Allgood

Outline

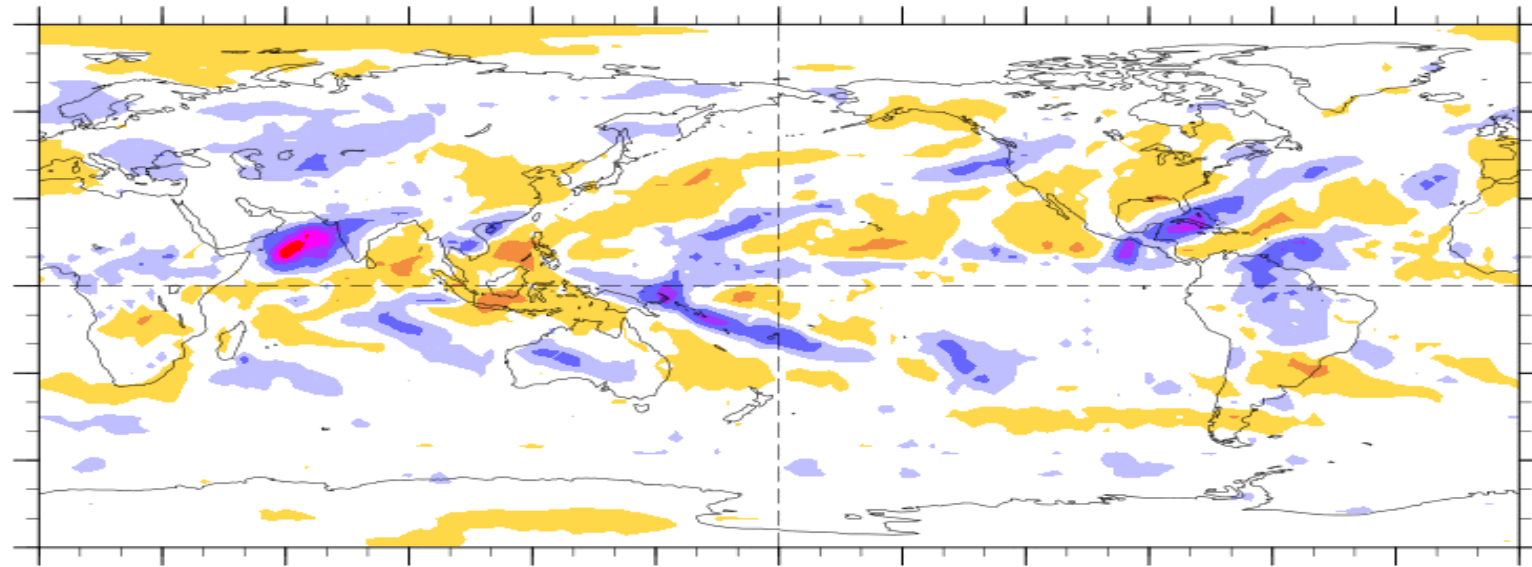
1. Review of Recent Conditions
2. Synopsis of Climate Modes
3. GTH Outlook and Forecast Discussion
4. Connections to U.S. Impacts

Outlook Review



7-Day Average OLR Anomaly

2014/10/21 - 2014/10/27



Cool shading
More clouds/rain

Warm shading
Less clouds/rain

Synopsis of Climate Modes

ENSO:

- El Niño is favored to begin in the next 1-2 months and last into the Northern Hemisphere spring 2015.

MJO and other subseasonal tropical variability:

- Although there is evidence of an eastward propagating envelope (currently entering/over the Indian Ocean), the MJO remains largely incoherent as competing signals interfere with the overall global tropical convective pattern.
- Dynamical model MJO index forecasts provide a large range of conflicting MJO index solutions (CFS/GFS favor I.O. convection, ECMWF favors west Pacific convection) due to difficulty resolving the evolution of the competing signals.

Extratropics:

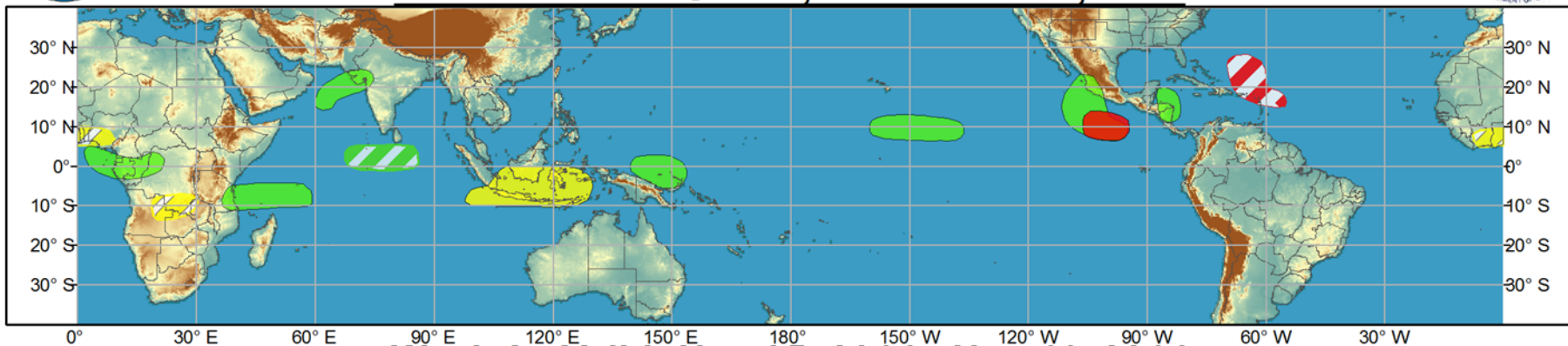
- The extended range forecast for the U.S. favors above-median temperatures for much of the CONUS (particularly the central US), with odds tilted towards above-median precipitation across the south-central U.S. and the East. Above-average rainfall is also favored for the Northwest. This solution is reasonably consistent with any potential MJO signal coming out over the Indian Ocean.



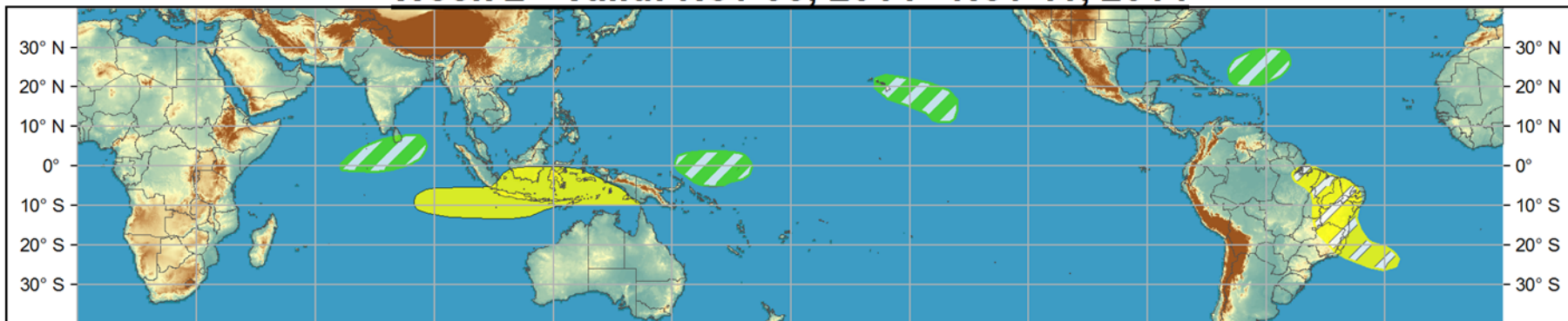
Global Tropics Hazards and Benefits Outlook - Climate Prediction Center



Week 1 - Valid: Oct 29, 2014 - Nov 04, 2014



Week 2 - Valid: Nov 05, 2014 - Nov 11, 2014



Confidence
High Moderate

- Tropical Cyclone Formation** Development of a tropical cyclone (tropical depression - TD, or greater strength).
- Above-average rainfall** Weekly total rainfall in the upper third of the historical range.
- Below-average rainfall** Weekly total rainfall in the lower third of the historical range.
- Above-normal temperatures** 7-day mean temperatures in the upper third of the historical range.
- Below-normal temperatures** 7-day mean temperatures in the lower third of the historical range.

Produced: 10/28/2014

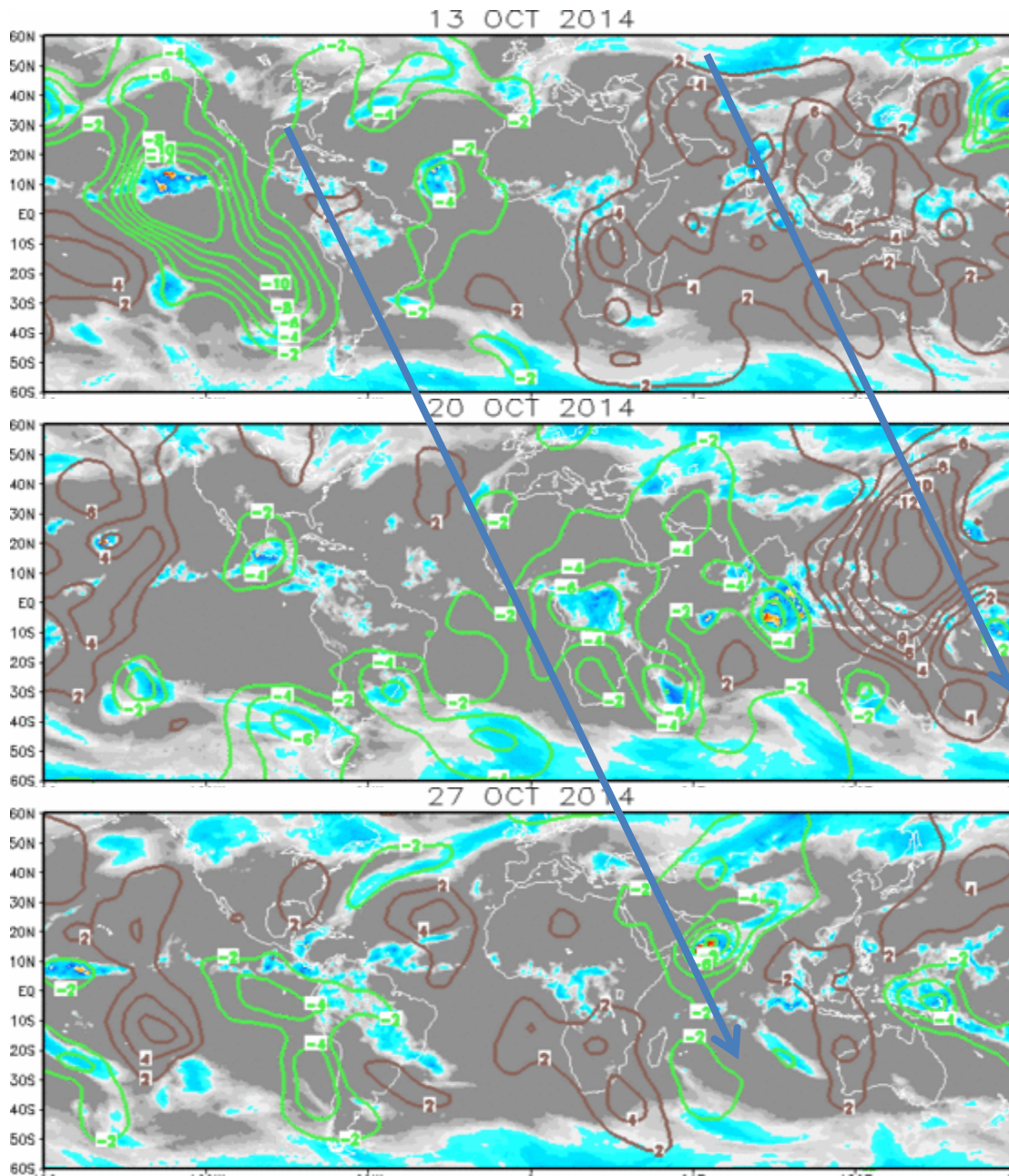
Forecaster: Allgood

Product is updated once per week, except from 6/1 - 11/30 for the region from 120E to 0, 0 to 40N. The product targets broad scale conditions integrated over a 7-day period for US interests only. Consult your local responsible forecast agency.

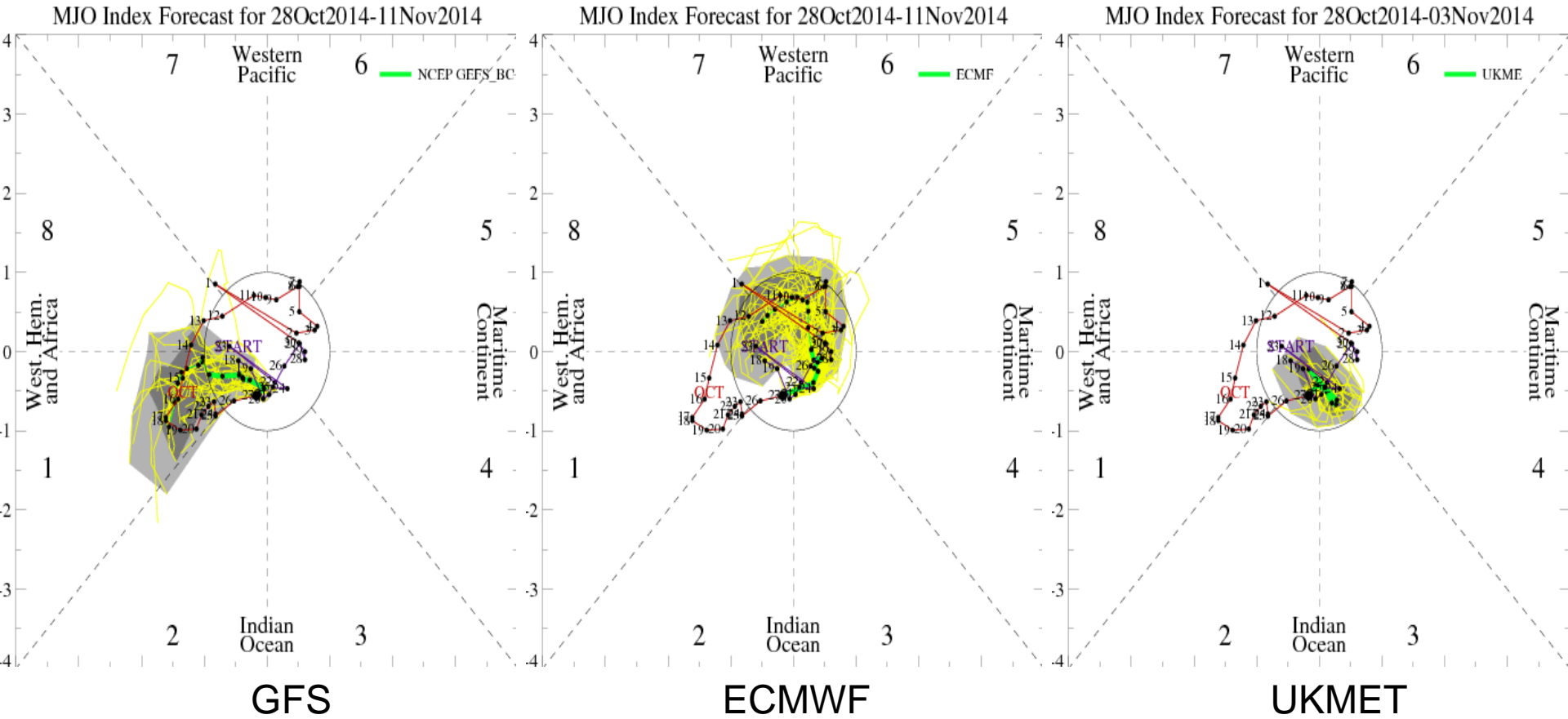


IR Satellite & 200-hpa Velocity Potential Anomalies

Green: Enhanced Divergence Brown: Enhanced Convergence



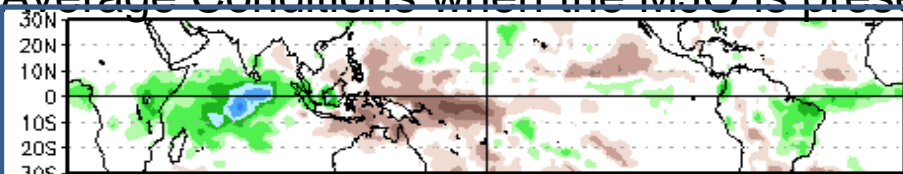
MJO Observation/Forecast



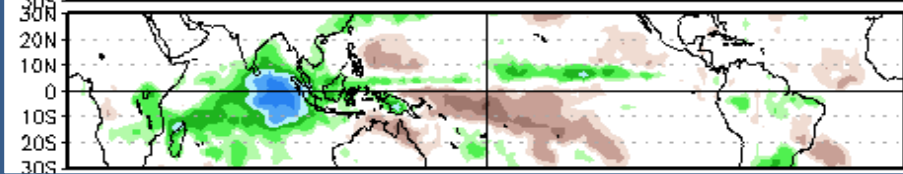
Pick your quadrant!

Average Conditions when the MJO is present (Nov-Mar)

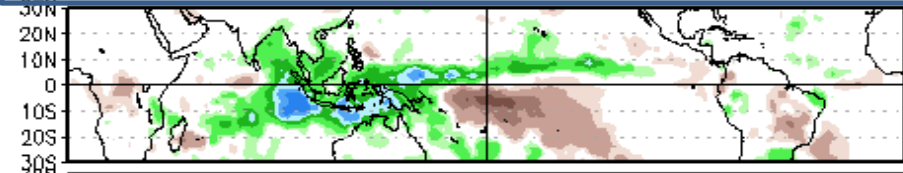
UKMet



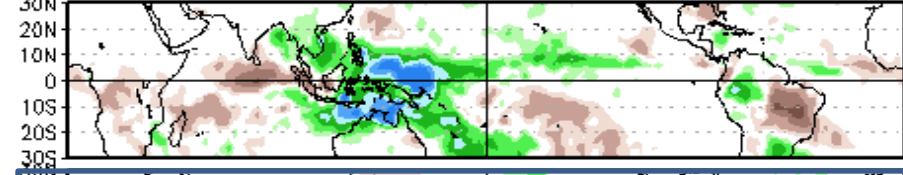
Phase 2



Phase 3

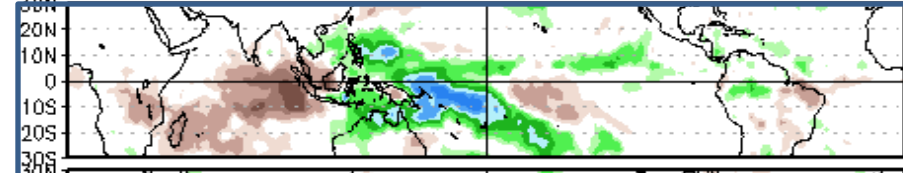


Phase 4

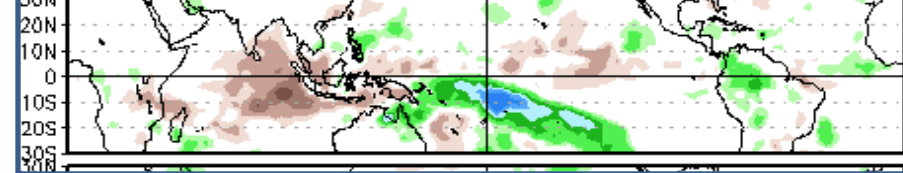


Phase 5

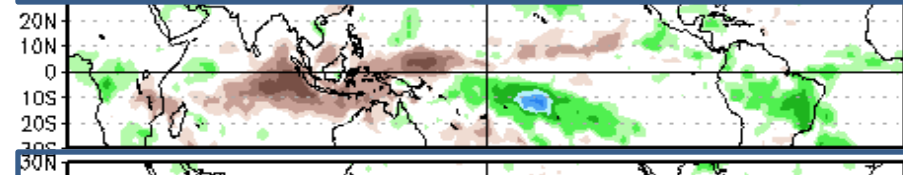
ECMWF



Phase 6

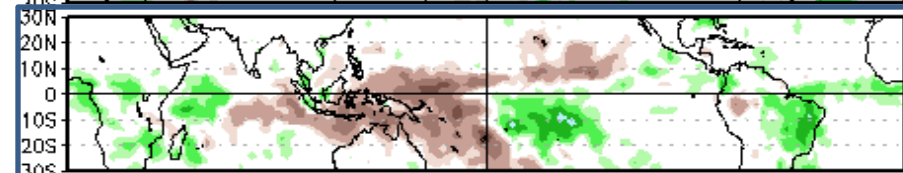


Phase 7

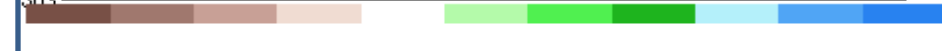


Phase 8

GFS

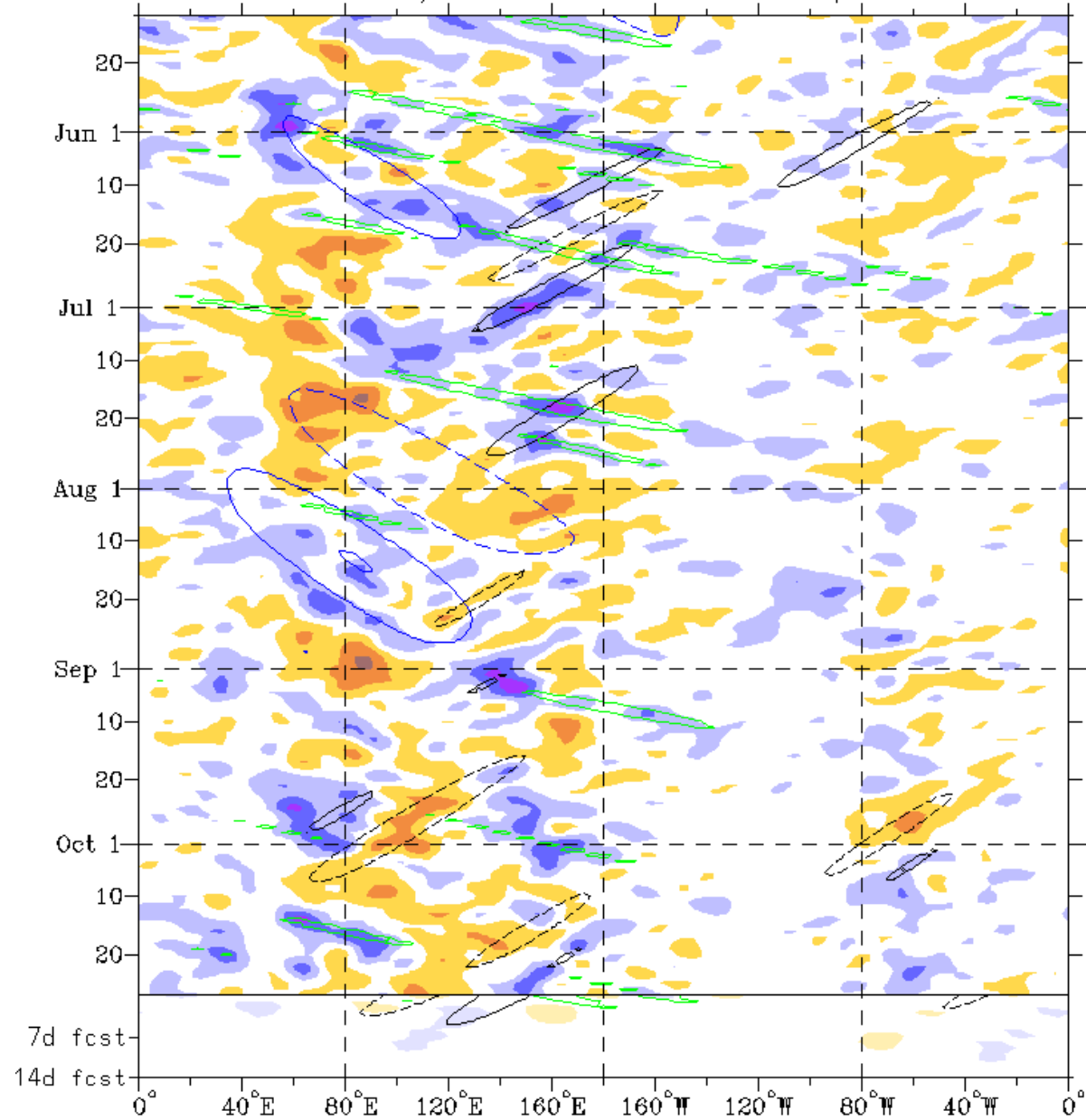


Phase 1



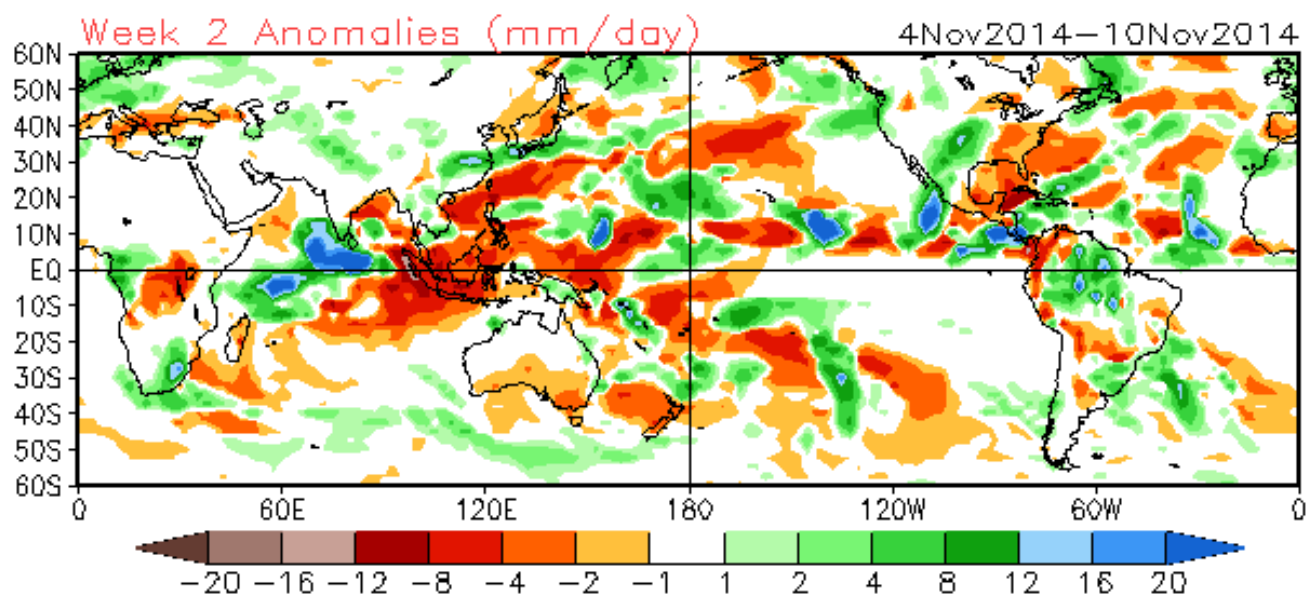
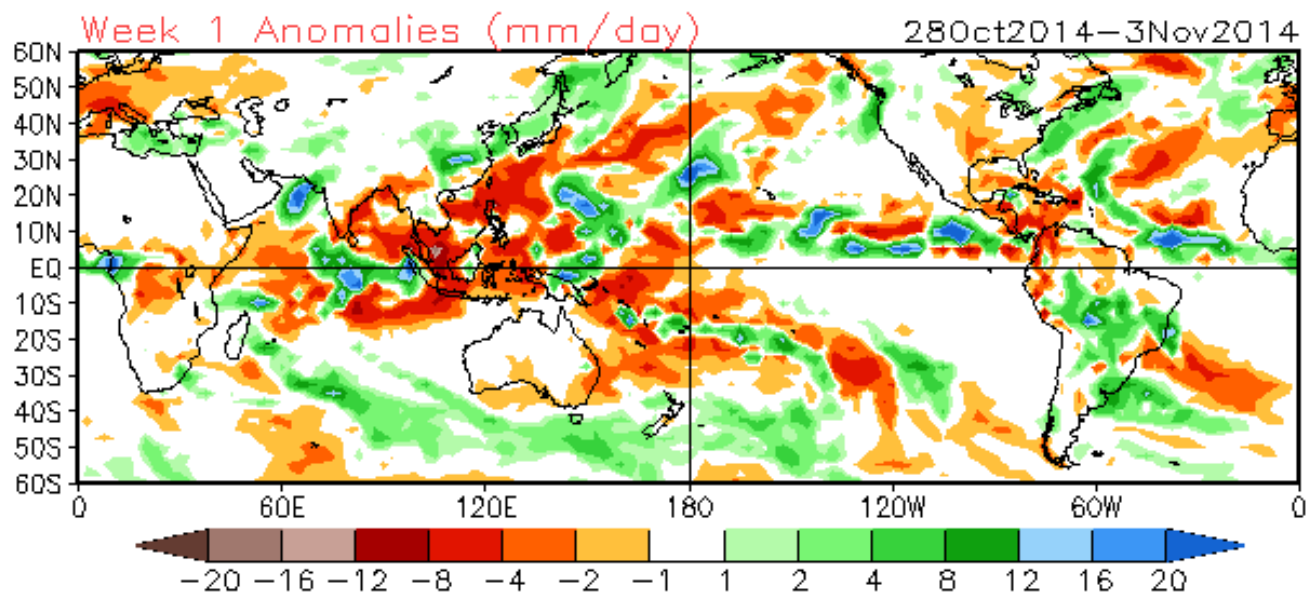
CAVEAT:
Why we are not relying much on MJO forecasts for this outlook!





- Note competing signals:
1. Eastward moving signal over the Indian Ocean (weak evidence of a slower moving envelope)
 2. Westward moving features over the W-Pac/Maritime Continent

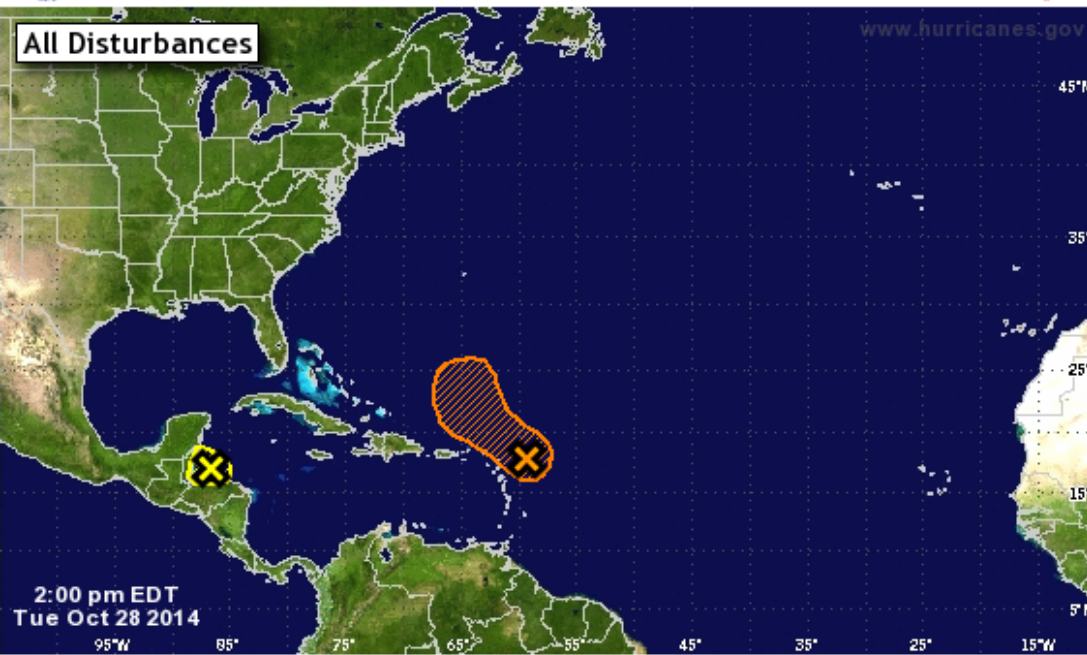
Note enhanced convection returning over the E-Pac.





Experimental 5-Day Graphical Tropical Weather Outlook

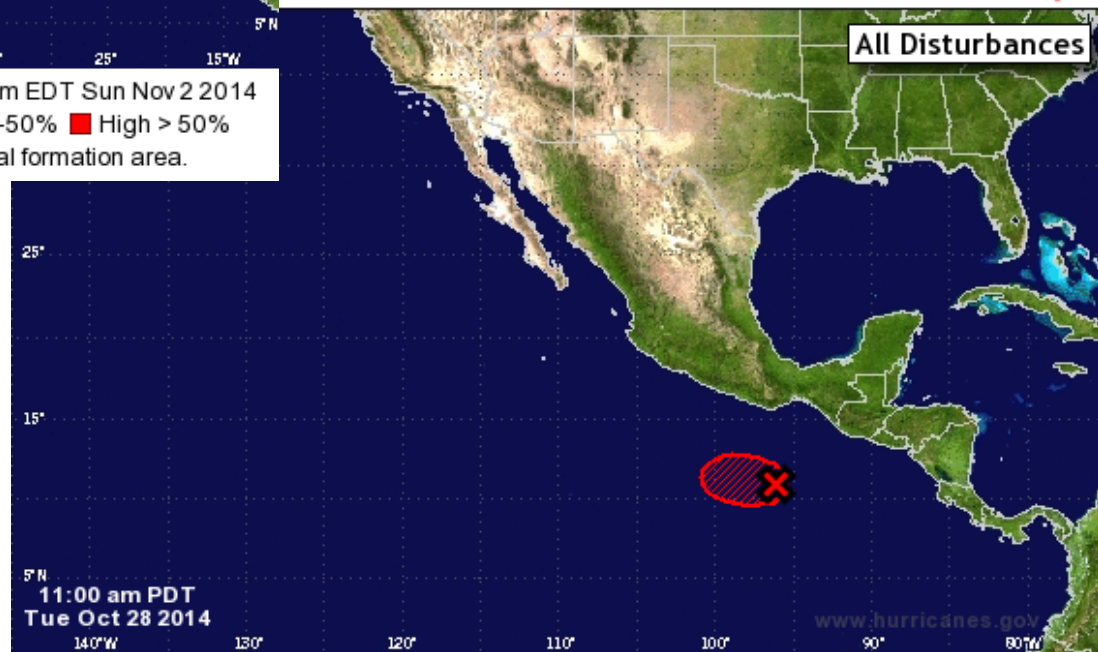
National Hurricane Center Miami, Florida



Tropical Cyclone Formation Potential for the 5-Day Period Ending 2:00 pm EDT Sun Nov 2 2014
 Chance of Cyclone Formation in 5 Days: ■ Low < 30% ■ Medium 30-50% ■ High > 50%
 X indicates current disturbance location; shading indicates potential formation area.

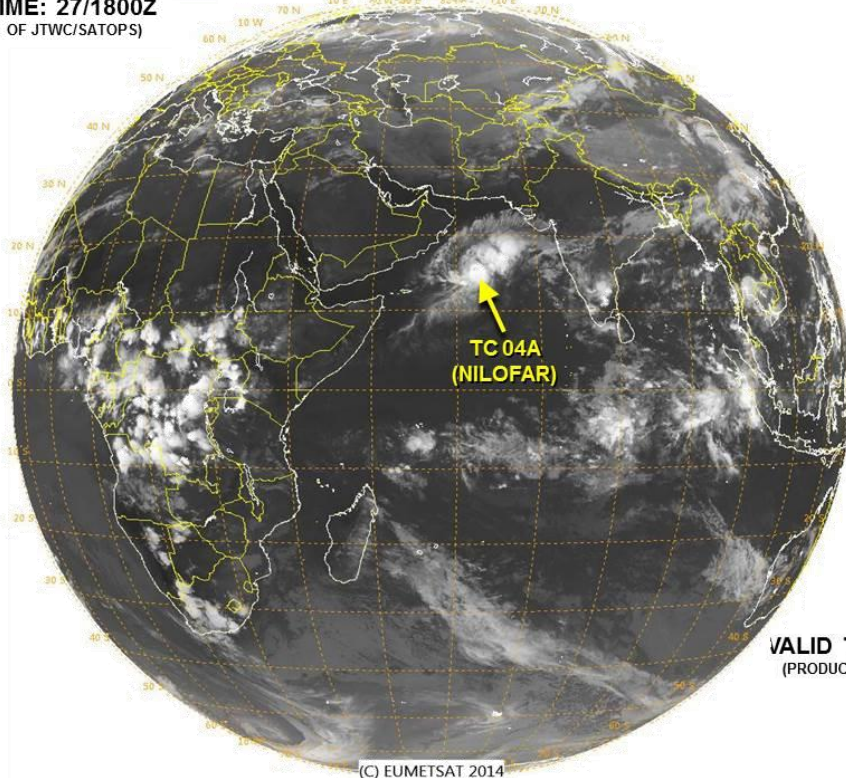
Experimental 5-Day Graphical Tropical Weather Outlook

National Hurricane Center Miami, Florida



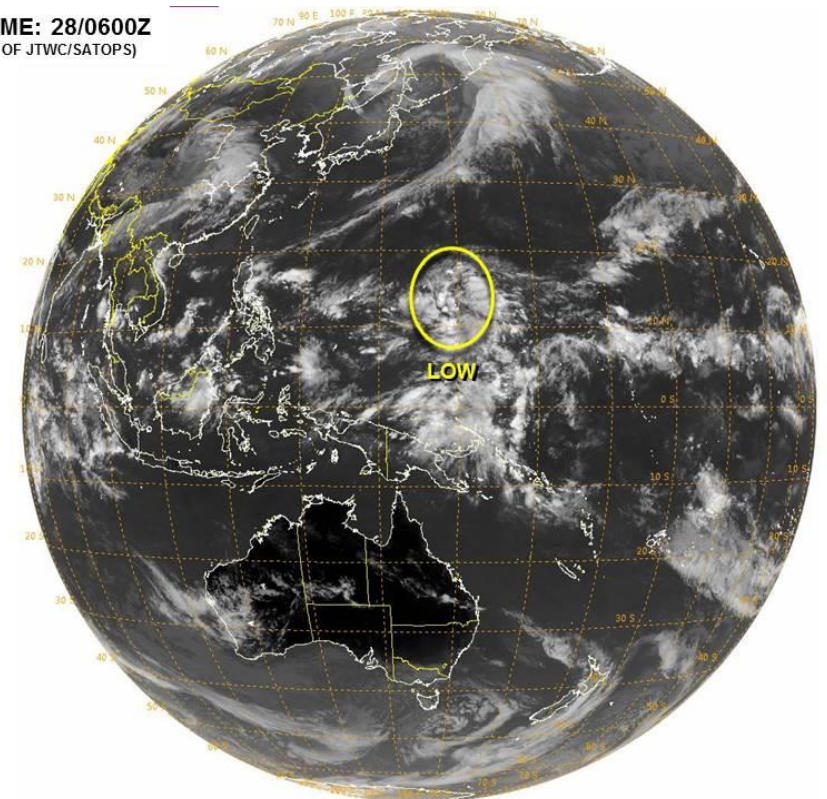
Tropical Cyclone Formation Potential for the 5-Day Period Ending 11:00 am PDT Sun Nov 2 2014
 Chance of Cyclone Formation in 5 Days: ■ Low < 30% ■ Medium 30-50% ■ High > 50%
 X indicates current disturbance location; shading indicates potential formation area.

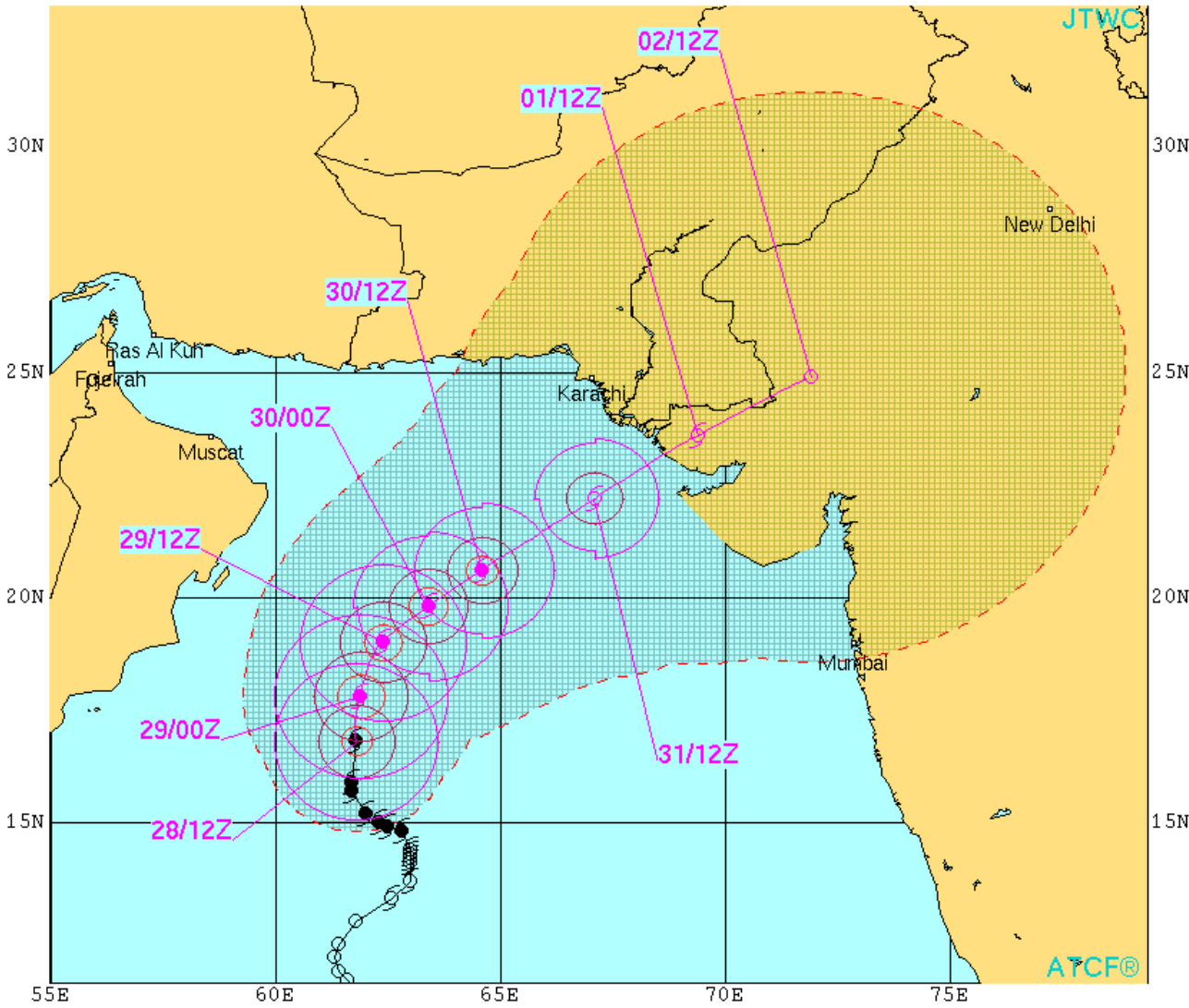
VALID TIME: 27/1800Z
(PRODUCT OF JTWC/SATOPS)



(C) EUMETSAT 2014

VALID TIME: 28/0600Z
(PRODUCT OF JTWC/SATOPS)





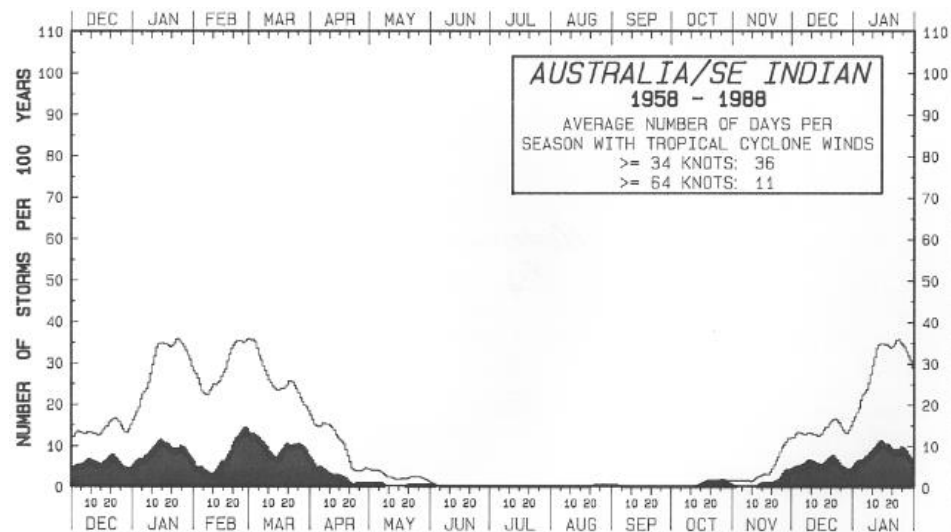
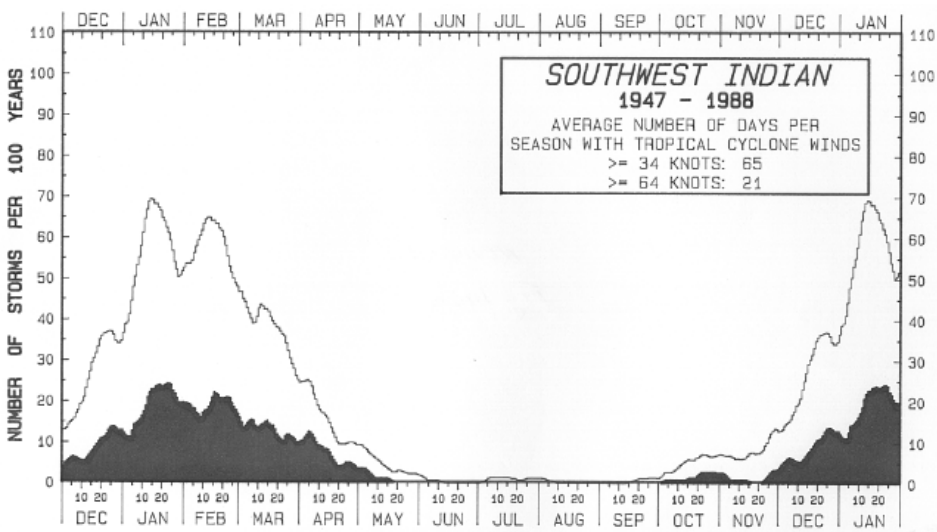
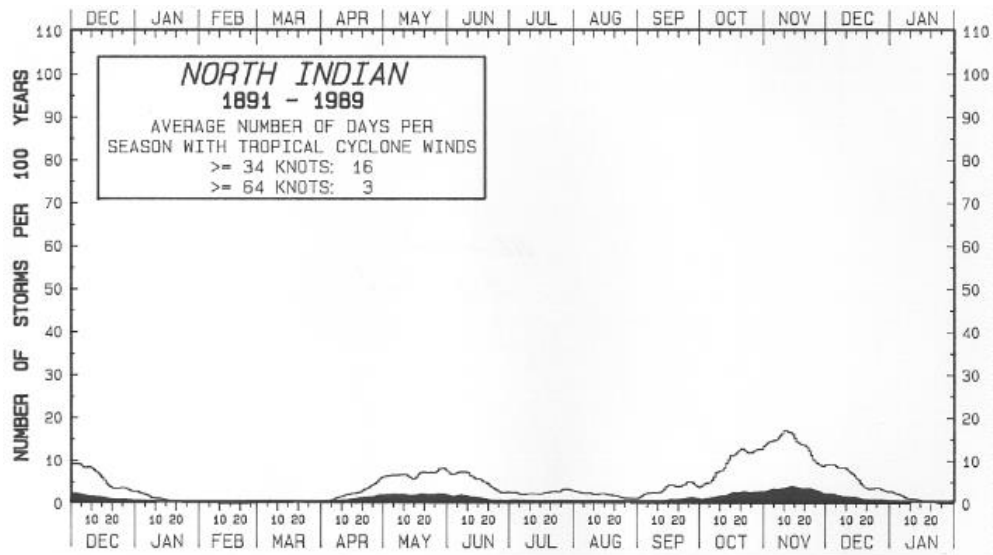
TROPICAL CYCLONE 04A (NILOFAR) WARNING #13
 WTIO31 PGTW 281500
 281200Z POSIT: NEAR 16.8N 61.8E
 MOVING 005 DEGREES TRUE AT 09 KNOTS
 MAXIMUM SIGNIFICANT WAVE HEIGHT: 30 FEET
 28/12Z, WINDS 115 KTS, GUSTS TO 140 KTS
 29/00Z, WINDS 125 KTS, GUSTS TO 150 KTS
 29/12Z, WINDS 115 KTS, GUSTS TO 140 KTS
 30/00Z, WINDS 105 KTS, GUSTS TO 130 KTS
 30/12Z, WINDS 085 KTS, GUSTS TO 105 KTS
 31/12Z, WINDS 055 KTS, GUSTS TO 070 KTS
 01/12Z, WINDS 040 KTS, GUSTS TO 050 KTS
 02/12Z, WINDS 030 KTS, GUSTS TO 040 KTS

CPA TO:	NM	DTG
KARACHI	131	01/01Z
DUQM	259	29/05Z
MASIRAH_ISLAND	218	29/10Z

BEARING AND DISTANCE	DIR	DIST (NM)	TAU (HRS)
MASIRAH_ISLAND	112	220	24
DUQM	097	269	24

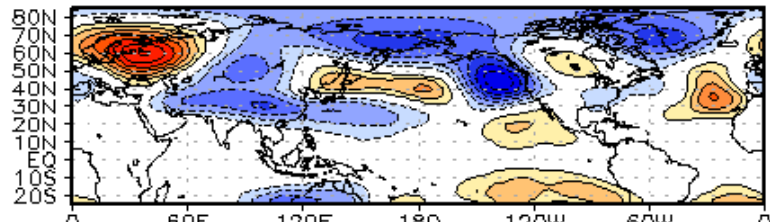
○ LESS THAN 34 KNOTS
 ⊖ 34-63 KNOTS
 ● MORE THAN 63 KNOTS
 PAST 6 HOURLY CYCLONE POSITS IN BLACK
 FORECAST CYCLONE POSITS IN COLOR



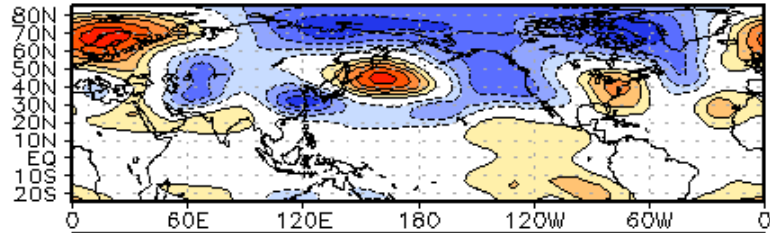


Connections to U.S. Impacts

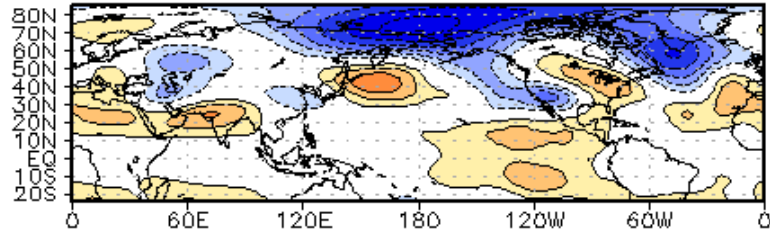
WHMJO Phase 2 z200 Lagged Composite (ond)



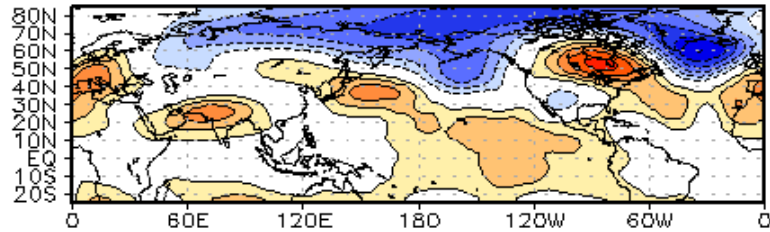
0-5dy



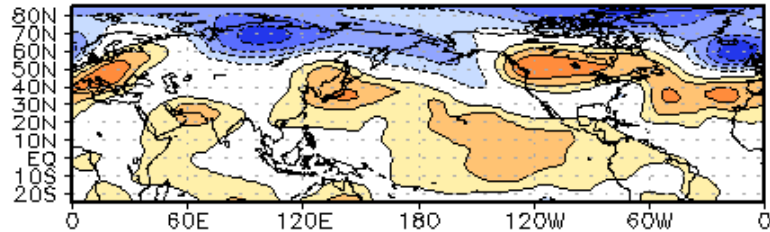
5-10dy



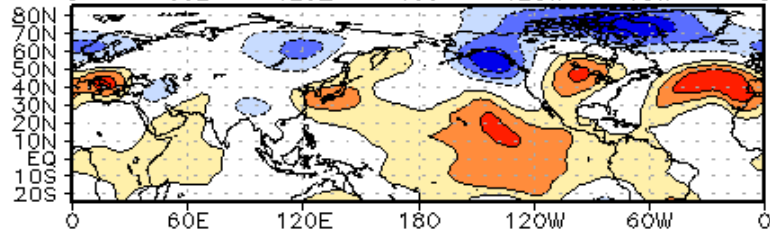
10-15dy



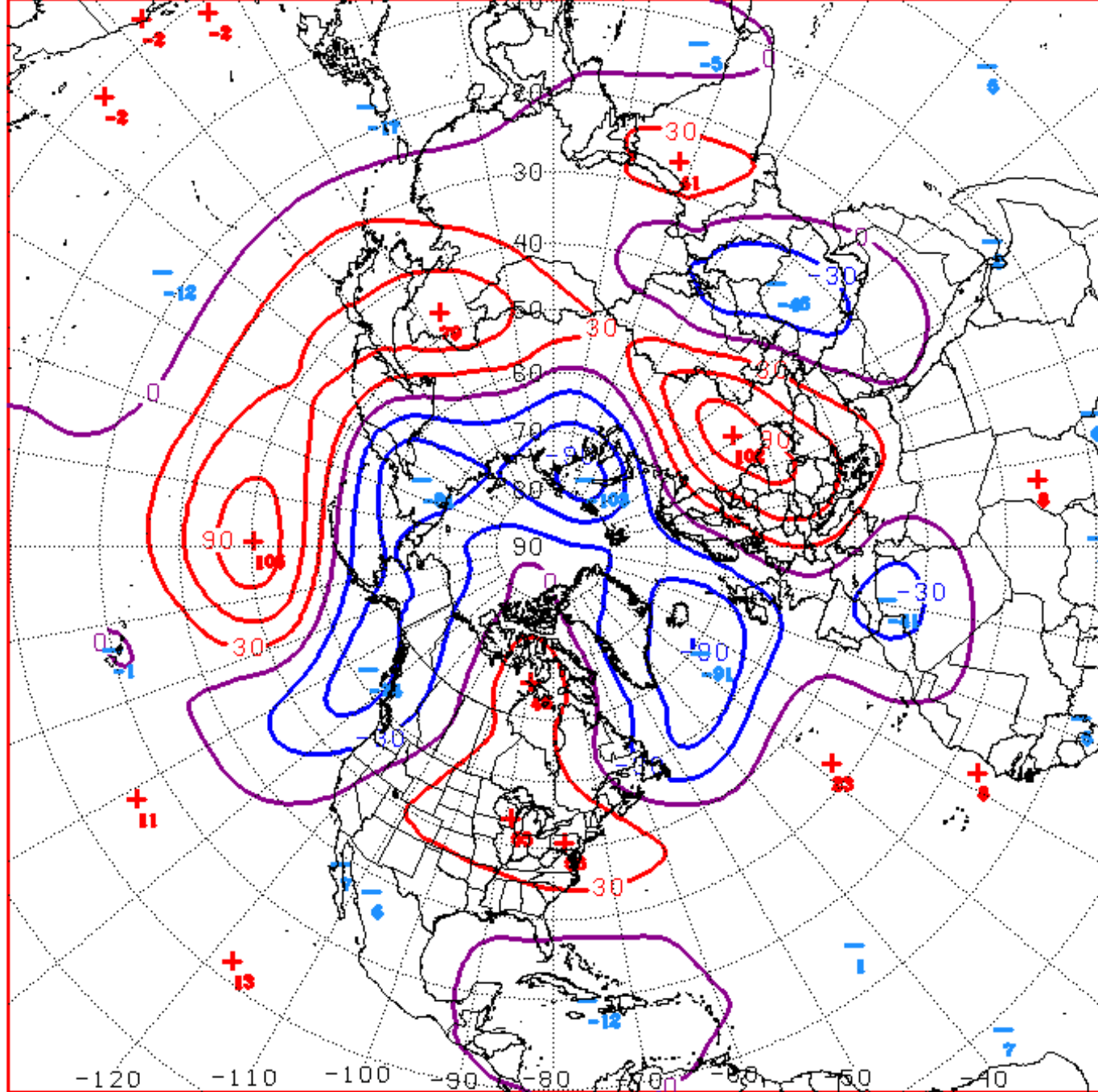
15-20dy



20-25dy

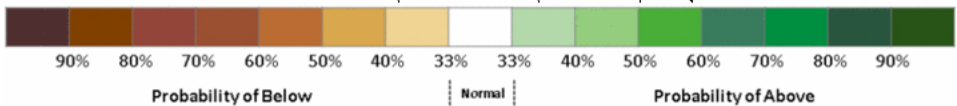
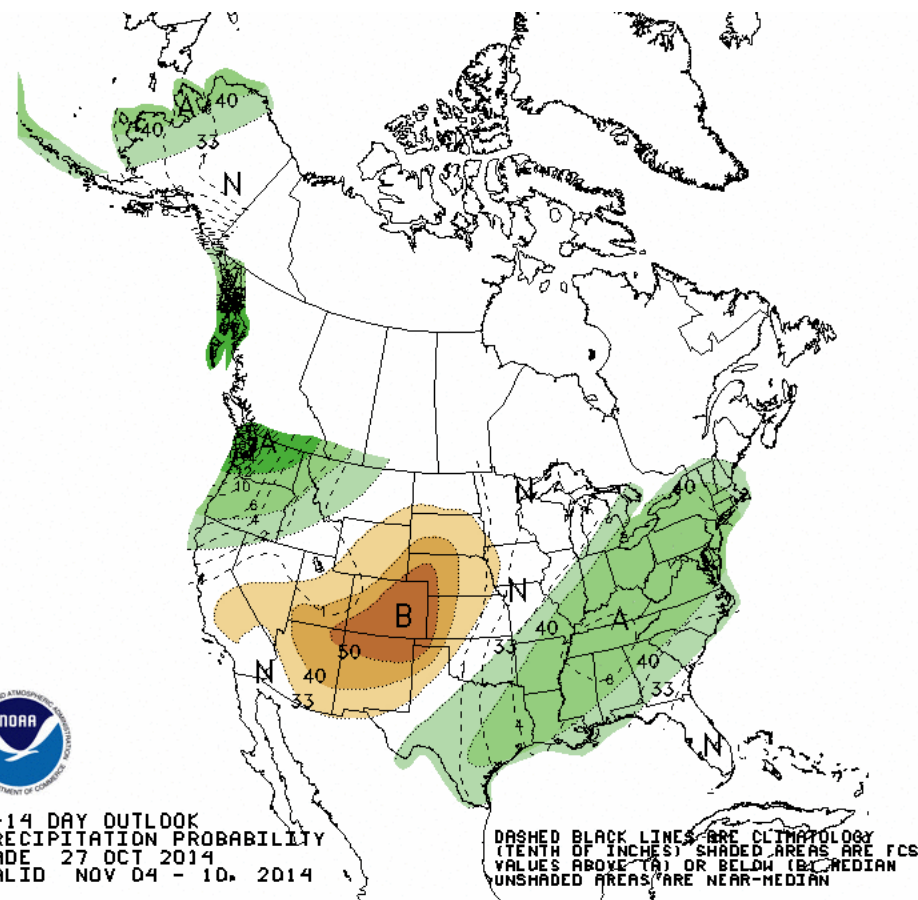
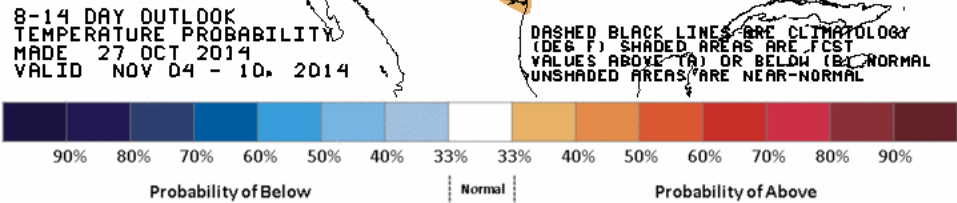
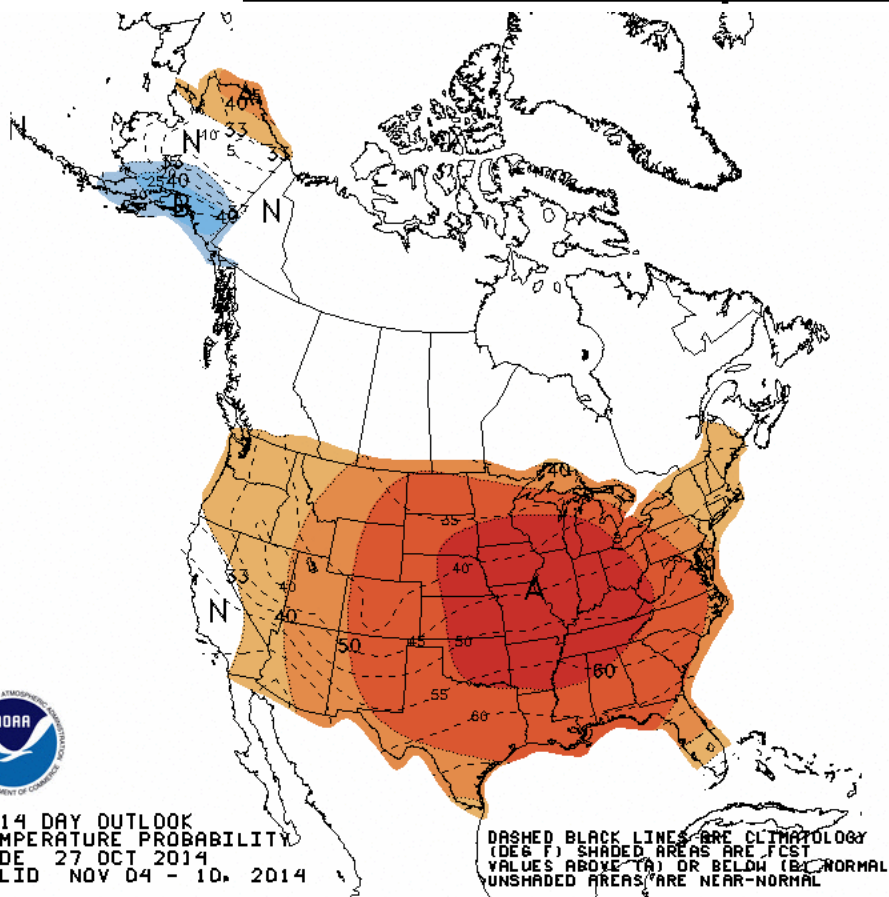


25-30dy



D+11 500 MB ANOMALIES FROM 00Z ECMM
 CPC MAP MADE OCT 28 2014 1159 UTC CNTD NOV 08 2014

Week 2 – Temperature and Precipitation

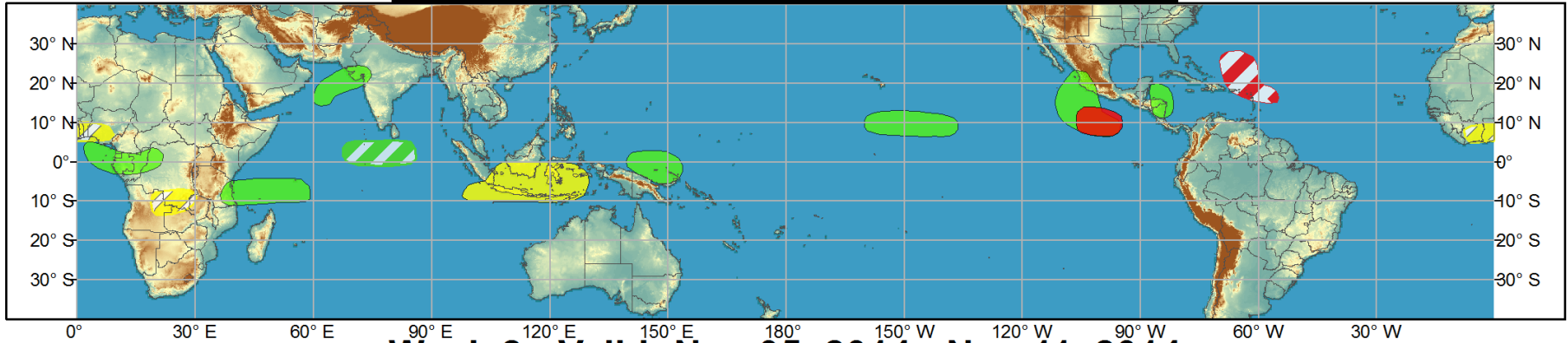




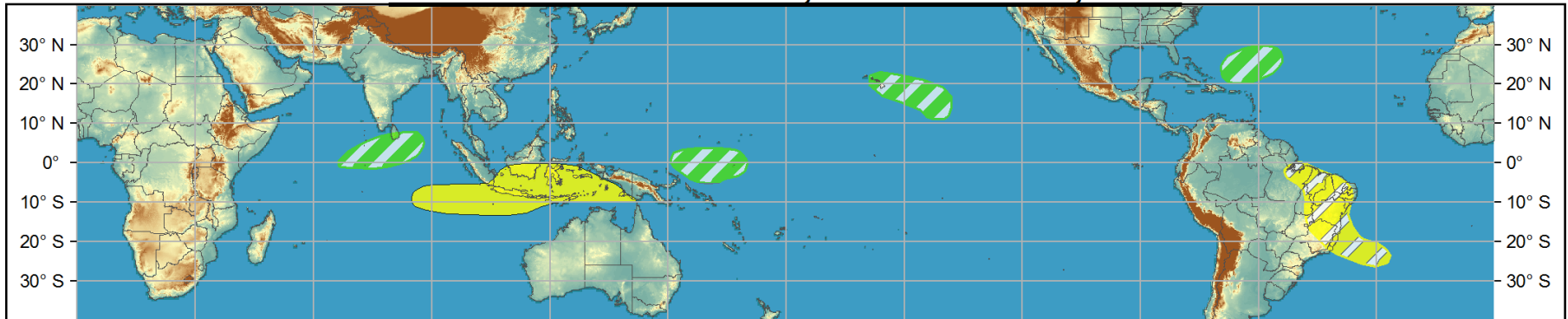
Global Tropics Hazards and Benefits Outlook - Climate Prediction Center



Week 1 - Valid: Oct 29, 2014 - Nov 04, 2014



Week 2 - Valid: Nov 05, 2014 - Nov 11, 2014



Confidence

High Moderate

- Tropical Cyclone Formation** Development of a tropical cyclone (tropical depression - TD, or greater strength).
- Above-average rainfall** Weekly total rainfall in the upper third of the historical range.
- Below-average rainfall** Weekly total rainfall in the lower third of the historical range.
- Above-normal temperatures** 7-day mean temperatures in the upper third of the historical range.
- Below-normal temperatures** 7-day mean temperatures in the lower third of the historical range.

Produced: 10/28/2014

Forecaster: Allgood

Product is updated once per week, except from 6/1 - 11/30 for the region from 120E to 0, 0 to 40N. The product targets broad scale conditions integrated over a 7-day period for US interests only. Consult your local responsible forecast agency.

