

Global Tropics Hazards And Benefits Outlook

August 25, 2015

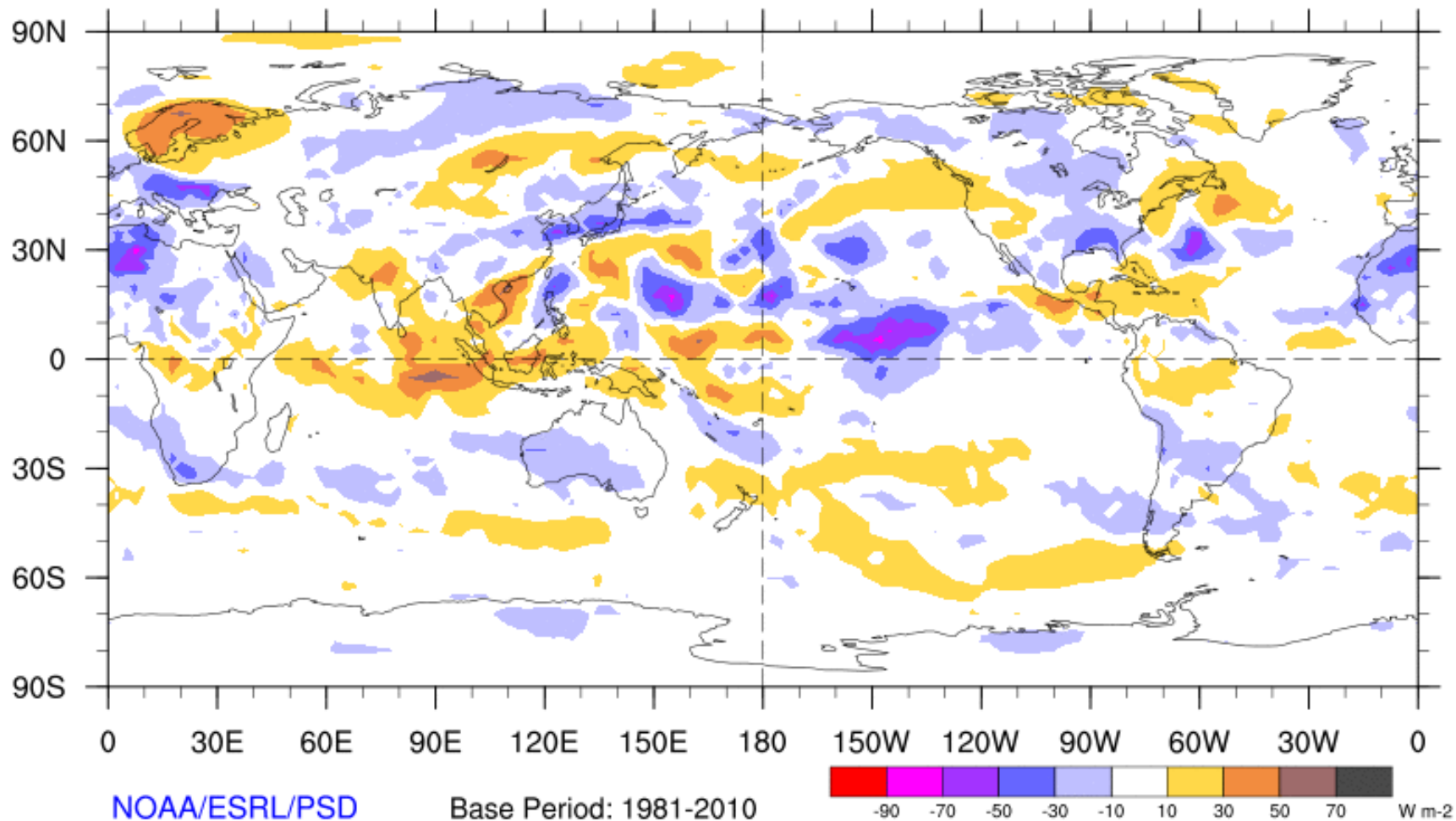
Jon Gottschalck

Outline

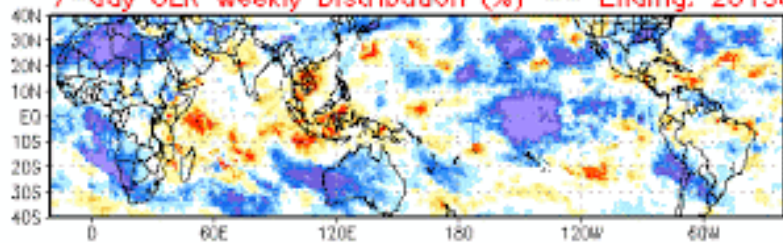
1. Review of Recent Conditions
2. Synopsis of Climate Modes
3. GTH Outlook and Forecast Discussion
4. Connections to U.S. Impacts

7-Day Average OLR Anomaly

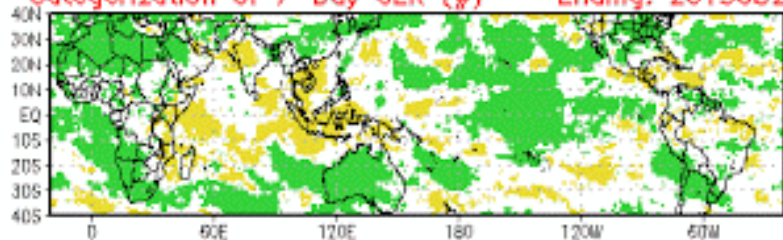
2015/08/17 - 2015/08/23



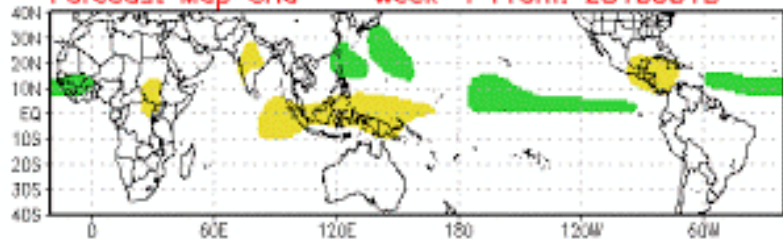
7-day OLR Weekly Distribution (%) -- Ending: 20150825



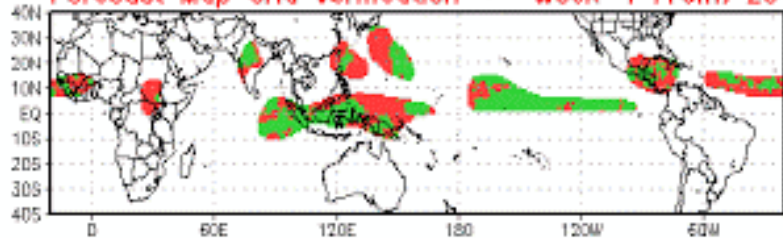
Categorization of 7-Day OLR (#) -- Ending: 20150825



Forecast Map Grid -- Week-1 From: 20150818



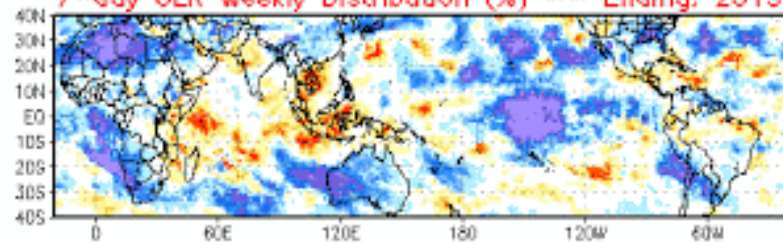
Forecast Map Grid Verification -- Week-1 From: 20150818



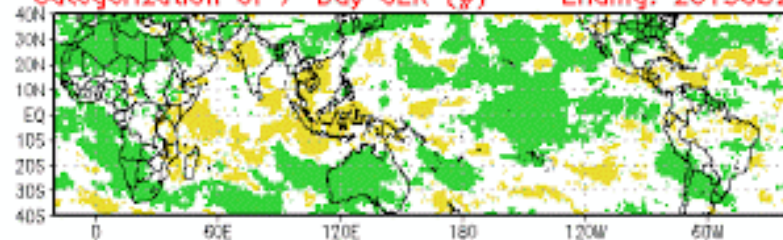
Hit: Green, Miss: Red
Heidke Skill Score: 25.4382

Week-1

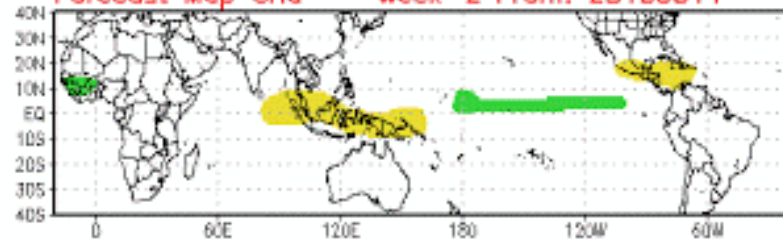
7-day OLR Weekly Distribution (%) -- Ending: 20150825



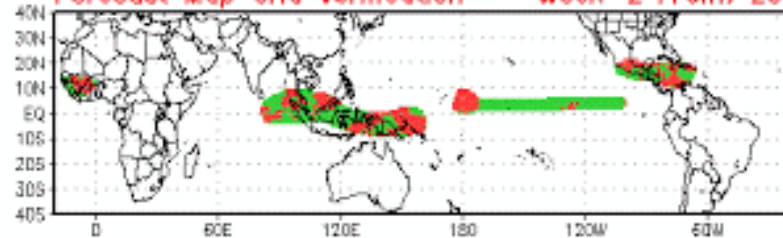
Categorization of 7-Day OLR (#) -- Ending: 20150825



Forecast Map Grid -- Week-2 From: 20150811



Forecast Map Grid Verification -- Week-2 From: 20150811

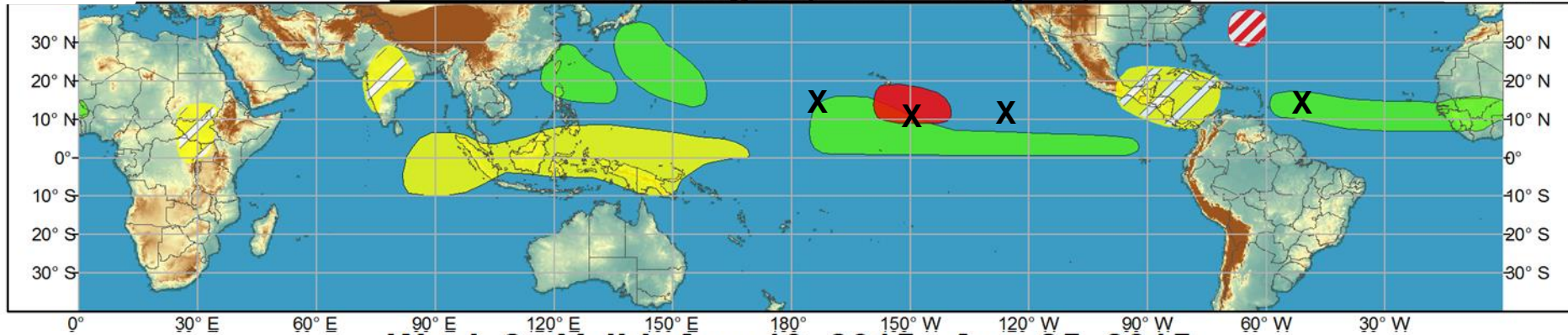


Hit: Green, Miss: Red
Heidke Skill Score: 36.0908

Week-2

Tropical Cyclone Verification

Week 1 - Valid: Aug 19, 2015 - Aug 25, 2015



Week 2 - Valid: Aug 19, 2015 - Aug 25, 2015



Synopsis of Climate Modes

ENSO:

- Current: [El Niño Advisory](#)
- Outlook: There is a greater than 90% chance that El Niño will continue through Northern Hemisphere winter 2015-16, and around an 85% chance it will last into early spring 2016.

MJO and other subseasonal tropical variability:

- The MJO is incoherent and not anticipated to play a role in the global tropical convective pattern.
- Dynamical model MJO Index forecasts indicate little coherent consistent signal, with ensemble members falling into almost every Phase during the next two weeks. This is reflective of the lack of a coherent subseasonal signal.
- Even other types of subseasonal tropical variability are currently not impressive
- El Niño and tropical cyclone activity are anticipated to be the primary drivers of tropical convective patterns during the next two weeks.

Extratropics:

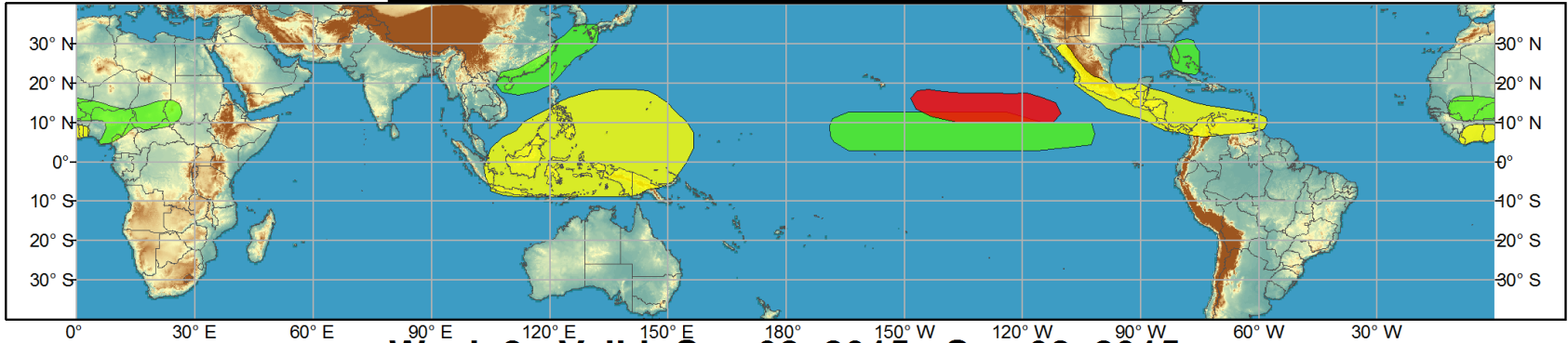
- Amplified mid-latitude pattern in part due to recurving West Pacific tropical cyclones interfering with any El Niño mid-latitude response.



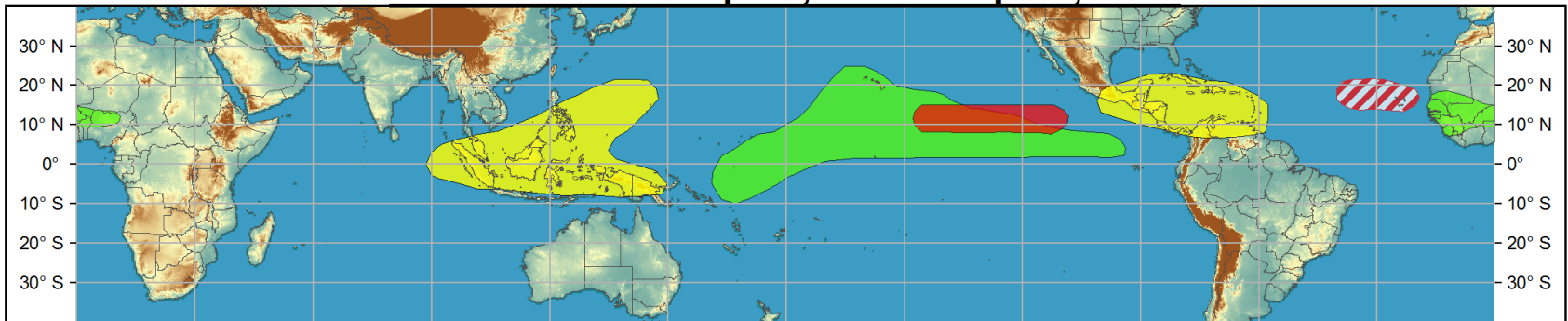
Global Tropics Hazards and Benefits Outlook - Climate Prediction Center



Week 1 - Valid: Aug 26, 2015 - Sep 01, 2015



Week 2 - Valid: Sep 02, 2015 - Sep 08, 2015



Confidence

High Moderate

- Tropical Cyclone Formation** Development of a tropical cyclone (tropical depression - TD, or greater strength).
- Above-average rainfall** Weekly total rainfall in the upper third of the historical range.
- Below-average rainfall** Weekly total rainfall in the lower third of the historical range.
- Above-normal temperatures** 7-day mean temperatures in the upper third of the historical range.
- Below-normal temperatures** 7-day mean temperatures in the lower third of the historical range.

Produced: 08/25/2015

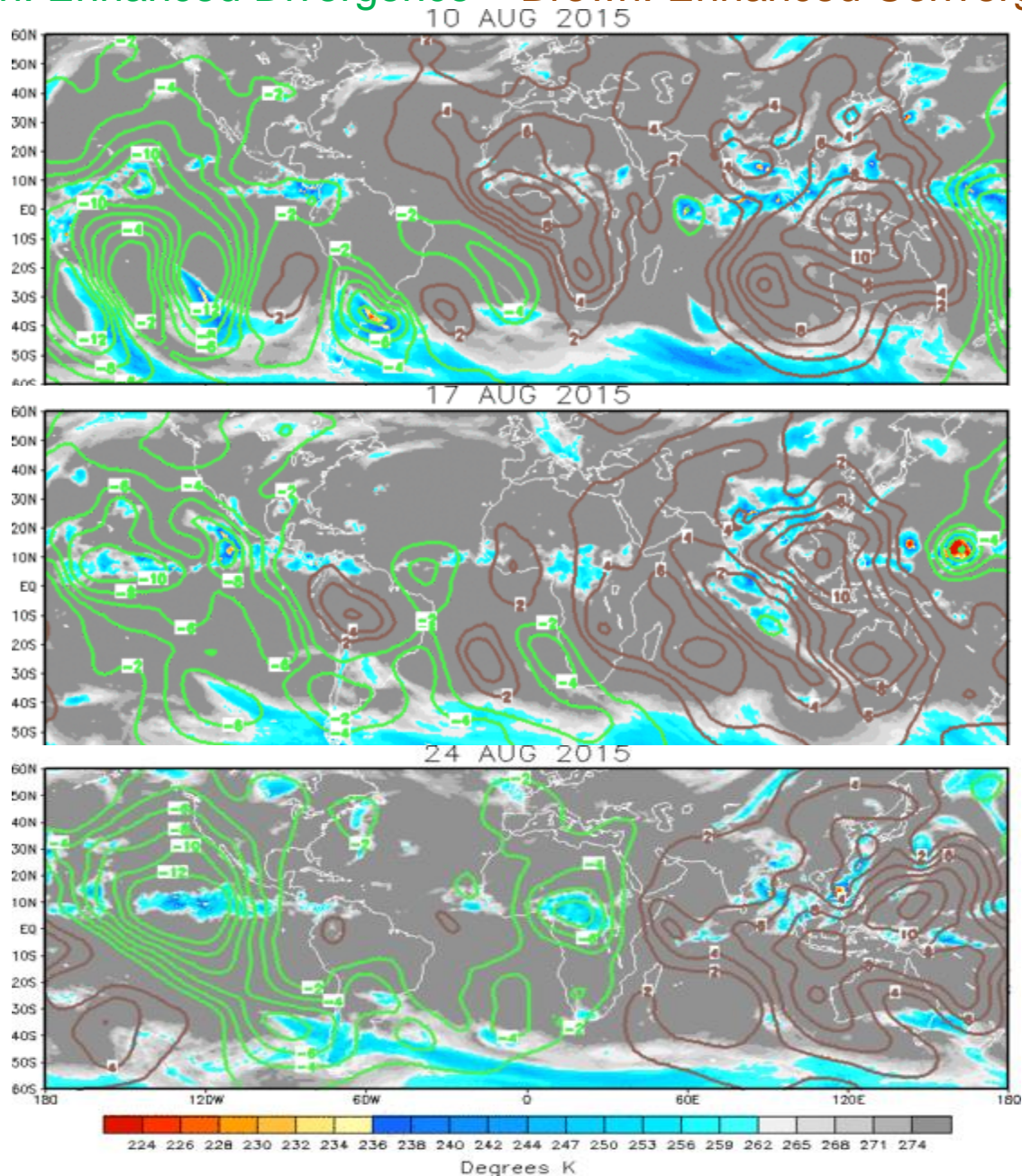
Forecaster: Gottschalck

Product is updated once per week, except from 6/1 - 11/30 for the region from 120E to 0, 0 to 40N. The product targets broad scale conditions integrated over a 7-day period for US interests only. Consult your local responsible forecast agency.

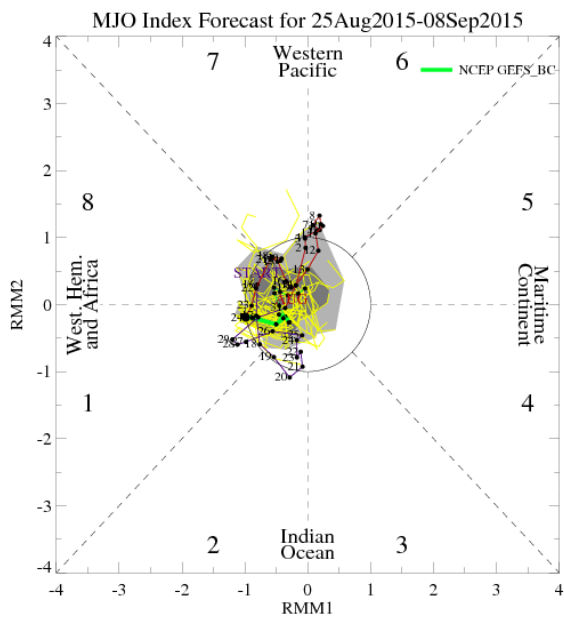


IR Satellite & 200-hpa Velocity Potential Anomalies

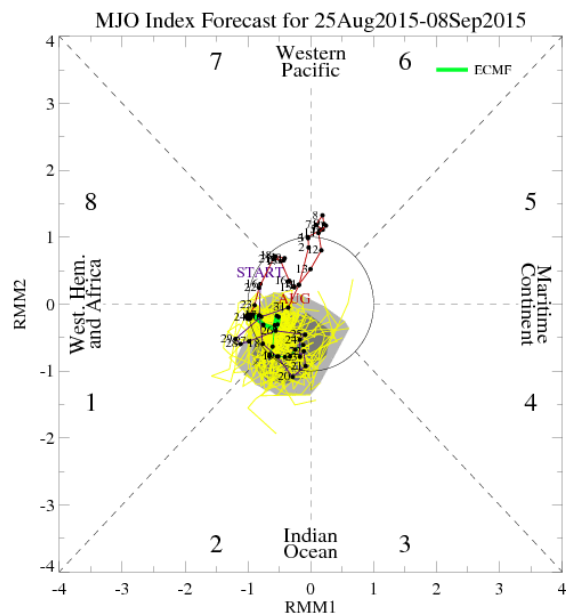
Green: Enhanced Divergence Brown: Enhanced Convergence



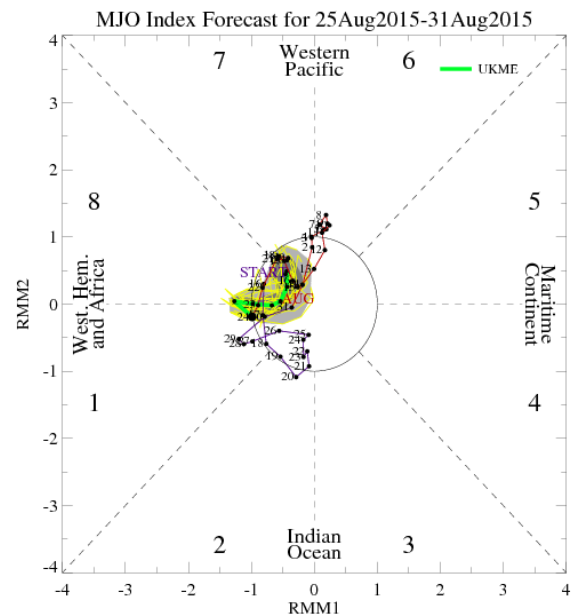
MJO Observation/Forecast



GFS

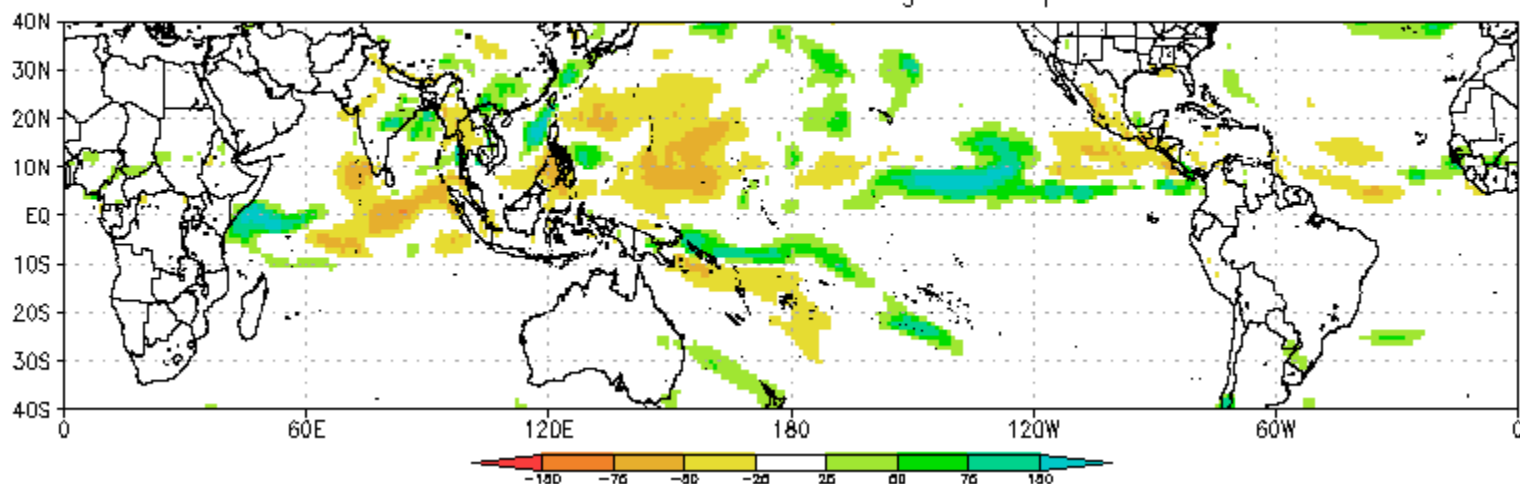


ECMWF

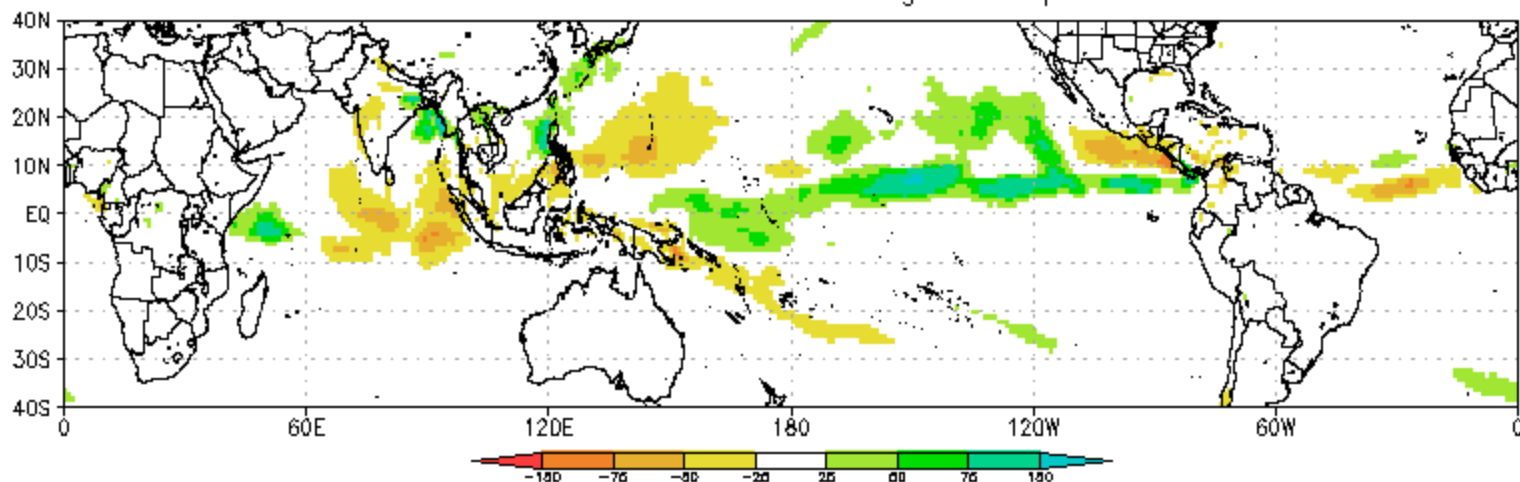


UKMET

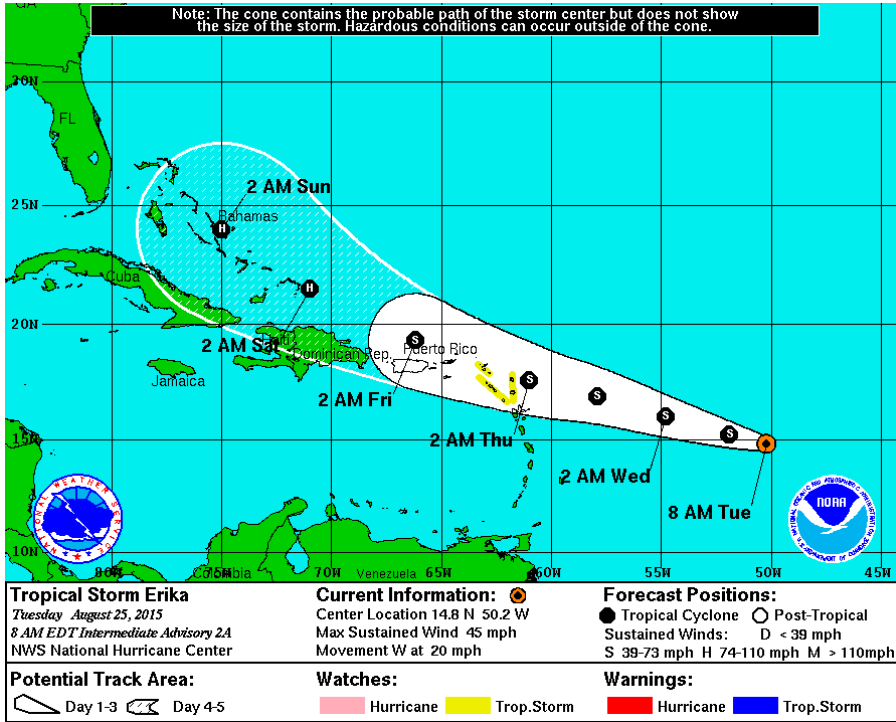
CFSv2 Precip Anomalies (mm) Issued 24Aug2015
Week-1 Forecast Ending 01Sep2015



CFSv2 Precip Anomalies (mm) Issued 24Aug2015
Week-2 Forecast Ending 08Sep2015



Atlantic Basin

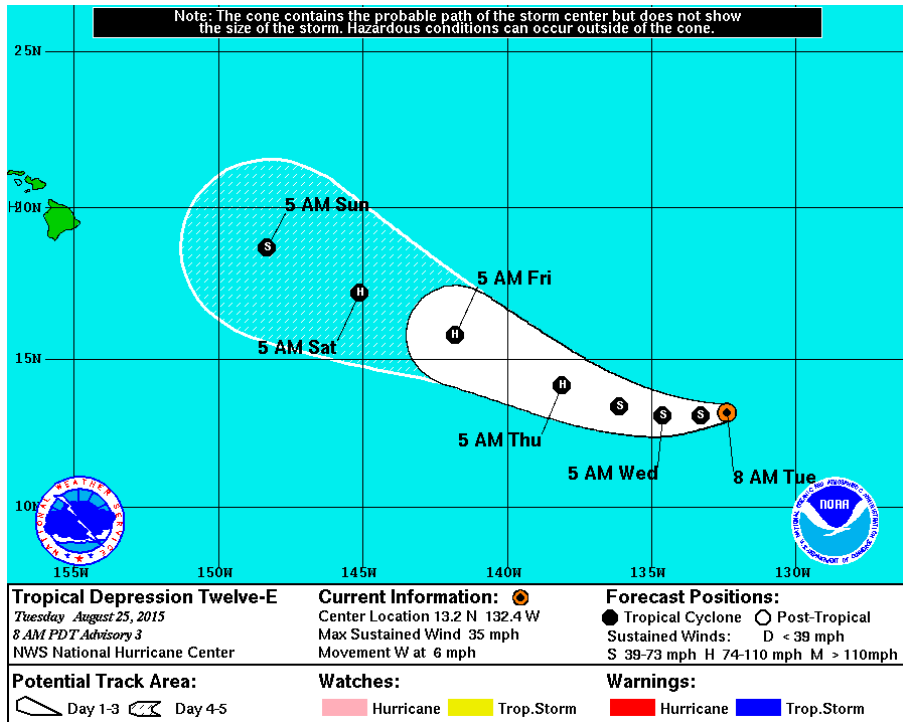


Five-Day Graphical Tropical Weather Outlook National Hurricane Center Miami, Florida

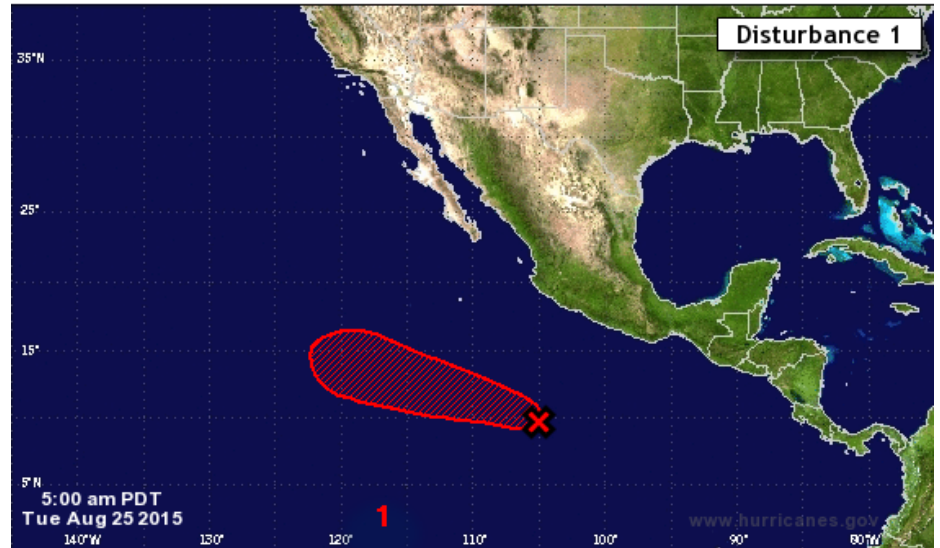


Tropical Cyclone Formation Potential for the 5-Day Period Ending 8:00 am EDT Sun Aug 30 2015
 Chance of Cyclone Formation in 5 Days: Low < 40% Medium 40-60% High > 60%
 X indicates current disturbance location; shading indicates potential formation area.

PacificBasin



Five-Day Graphical Tropical Weather Outlook National Hurricane Center Miami, Florida



Tropical Cyclone Formation Potential for the 5-Day Period Ending 5:00 am PDT Sun Aug 30 2015
 Chance of Cyclone Formation in 5 Days: Low < 40% Medium 40-60% High > 60%
 X indicates current disturbance location; shading indicates potential formation area.

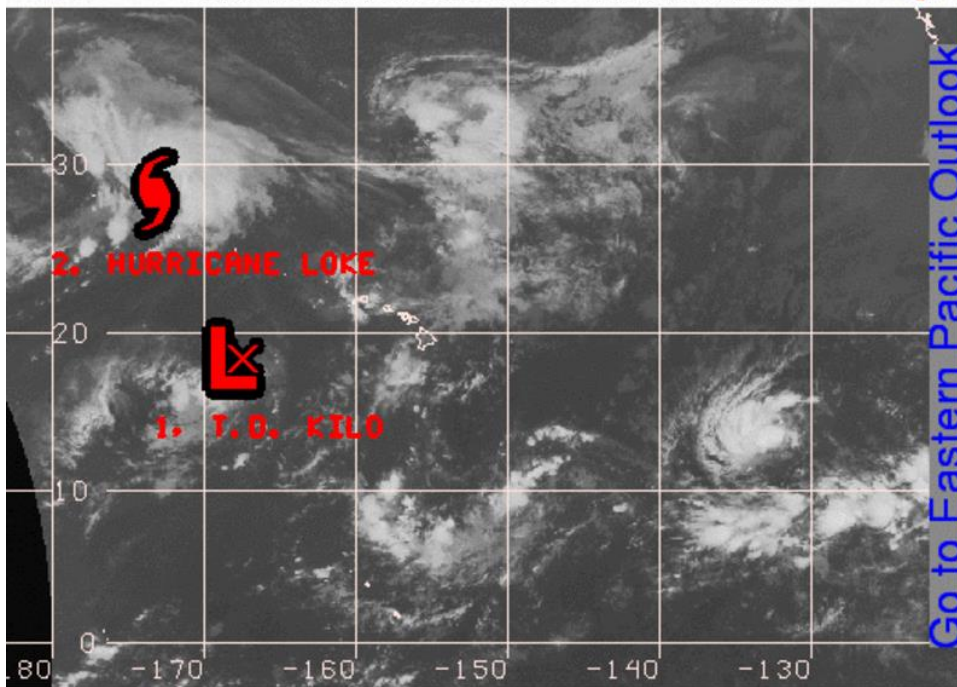


Graphical Tropical Weather Outlook

Central Pacific Hurricane Center Honolulu, Hawaii



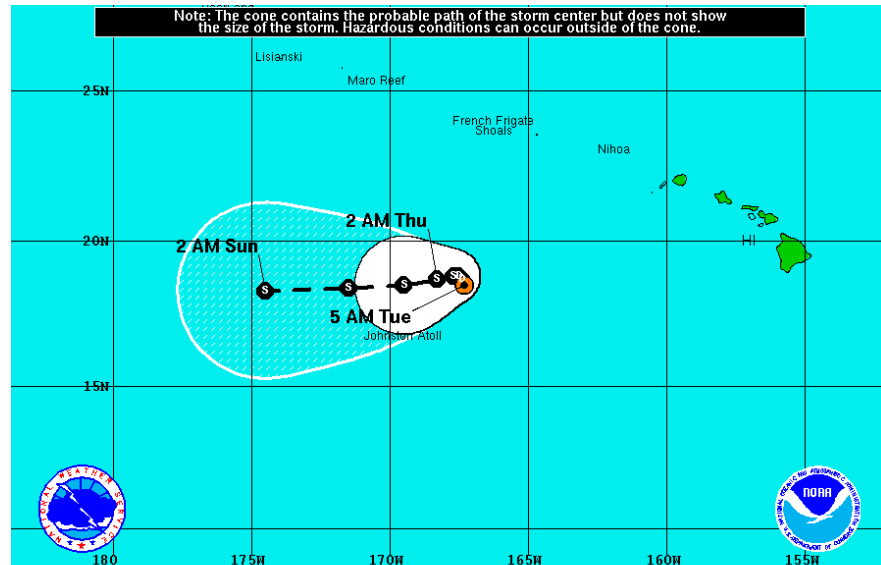
Go to Eastern Pacific Outlook



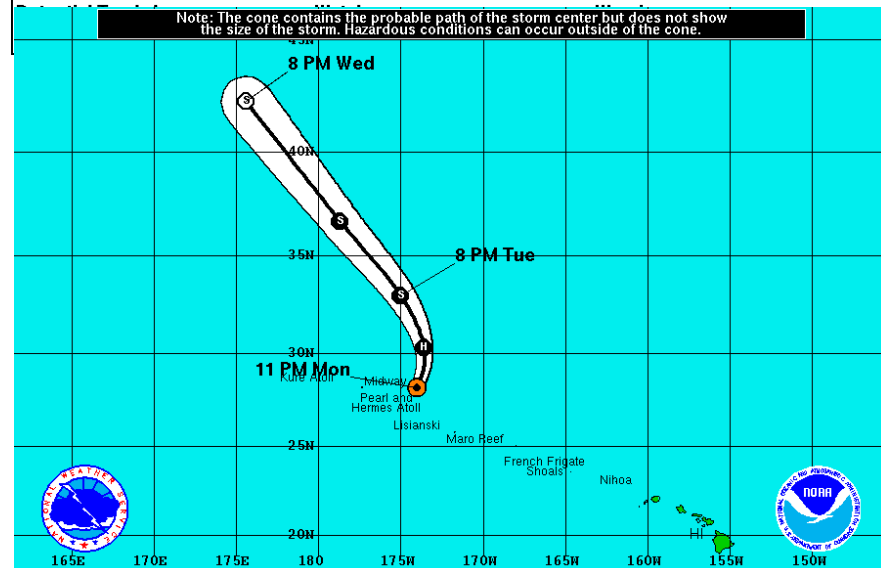
Satellite Imagery: 130 am HST

"X" denotes position of systems discussed in the Tropical Weather Outlook. Color indicates probability of tropical cyclone formation within 48 hours.

Low 0-30%
 Medium 40-60%
 High 70-100%



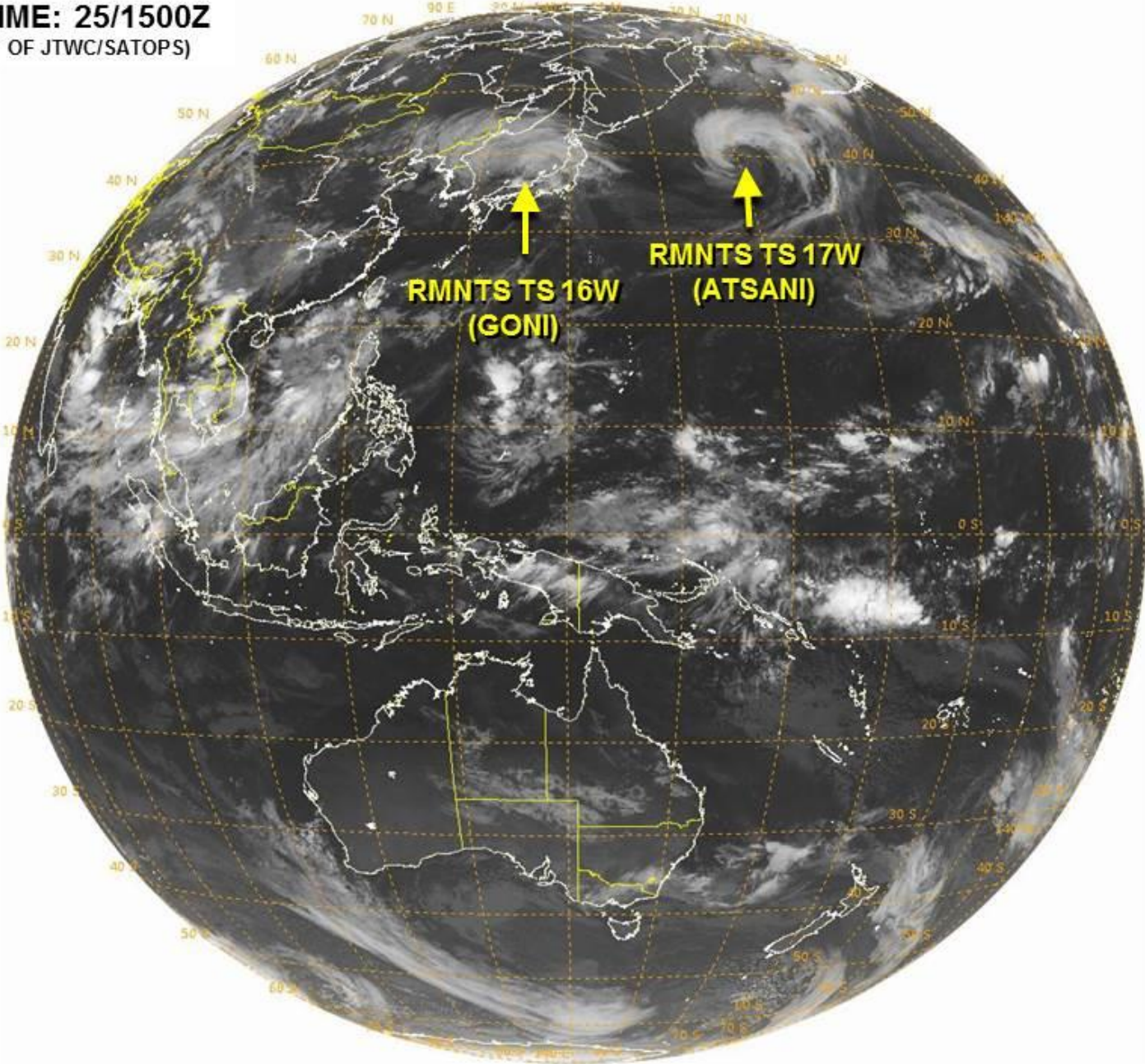
Tropical Depression Kilo Tuesday August 25, 2015 5 AM HST Advisory 20 NWS Central Pacific Hurricane Center	Current Information: Center Location 18.5 N 167.3 W Max Sustained Wind 30 mph Movement N at 3 mph	Forecast Positions: ● Tropical Cyclone ○ Post-Tropical Sustained Winds: D < 39 mph S 39-73 mph H 74-110 mph M > 110mph
--	---	--



Hurricane Loke Monday August 24, 2015 11 PM HST Advisory 18 NWS Central Pacific Hurricane Center	Current Information: Center Location 28.2 N 174.0 W Max Sustained Wind 75 mph Movement NNE at 17 mph	Forecast Positions: ● Tropical Cyclone ○ Post-Tropical Sustained Winds: D < 39 mph S 39-73 mph H 74-110 mph M > 110mph
--	--	--

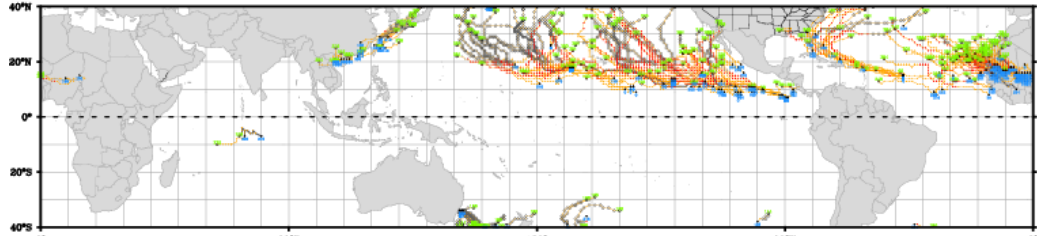
Potential Track Area: ○ Day 1-3 ○ Day 4-5	Watches: ■ Hurricane ■ Trop.Storm	Warnings: ■ Hurricane ■ Trop.Storm
---	---	--

VALID TIME: 25/1500Z
(PRODUCT OF JTWC/SATOPS)

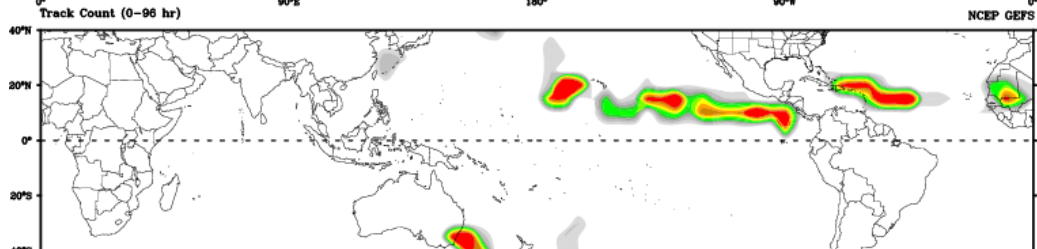


CWB TC Tracker for NCEP GEFS (Fuzzy_AllCriteria)

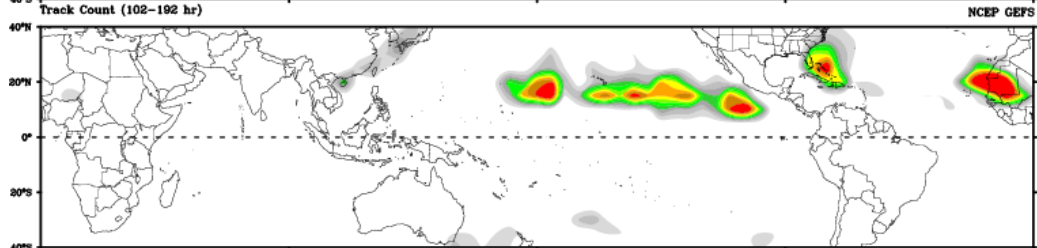
TC Track(0-384 hr) 2015082500 NCEP GEFS



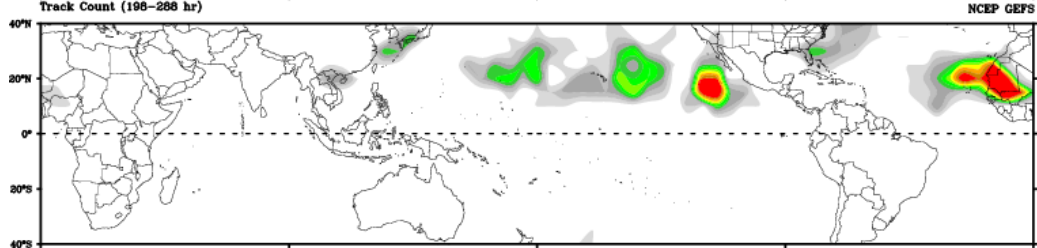
Days 1-4



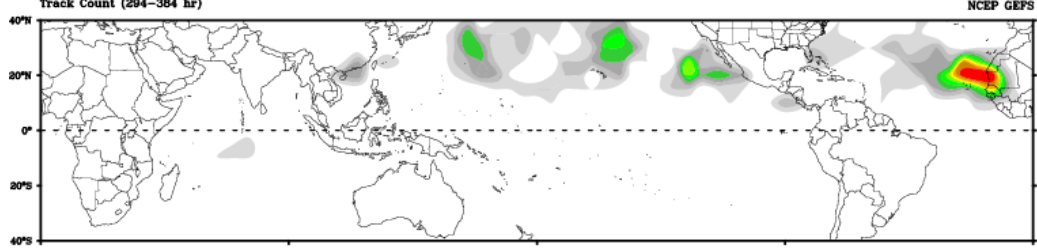
Day 5-8



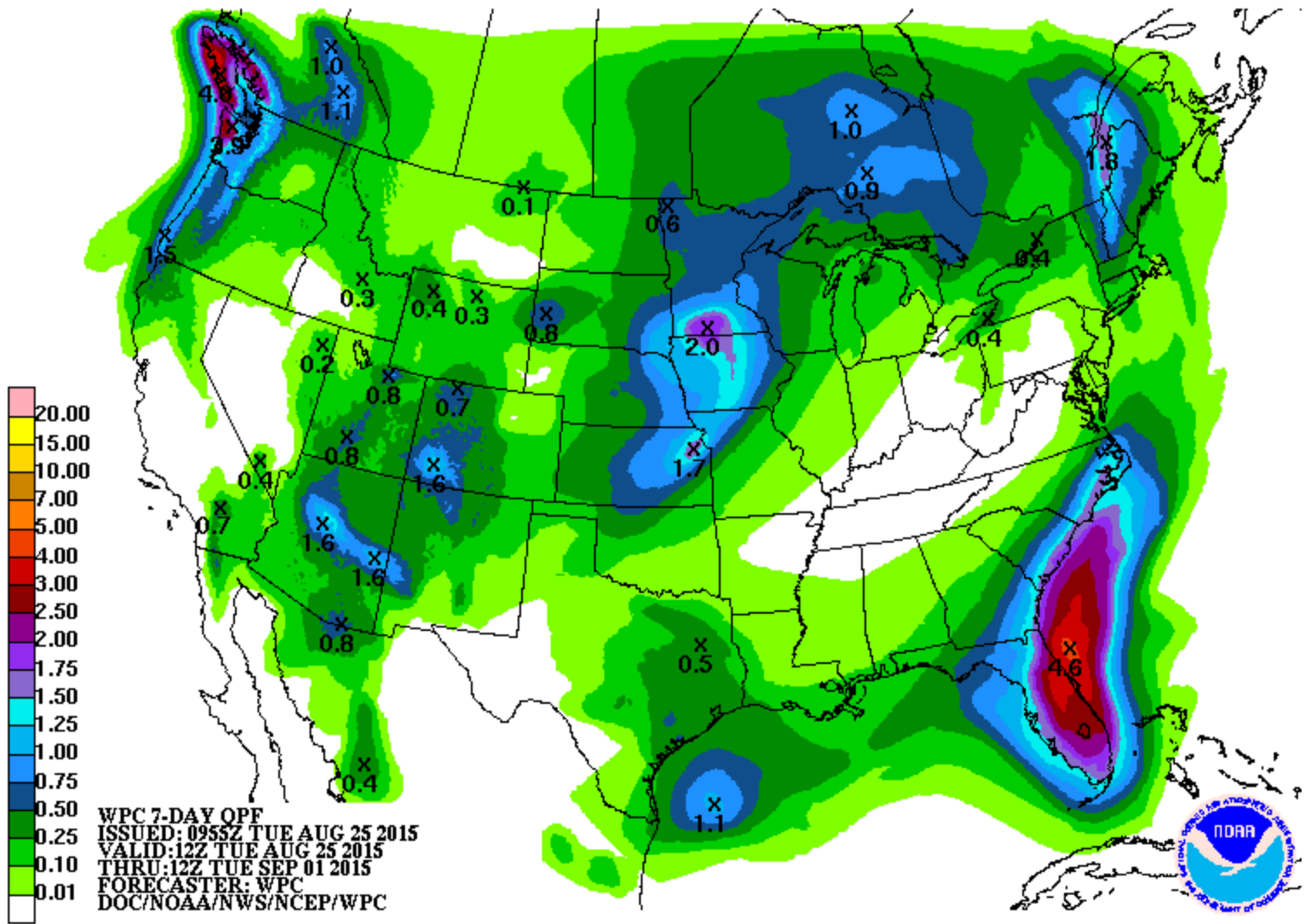
Day 9-12

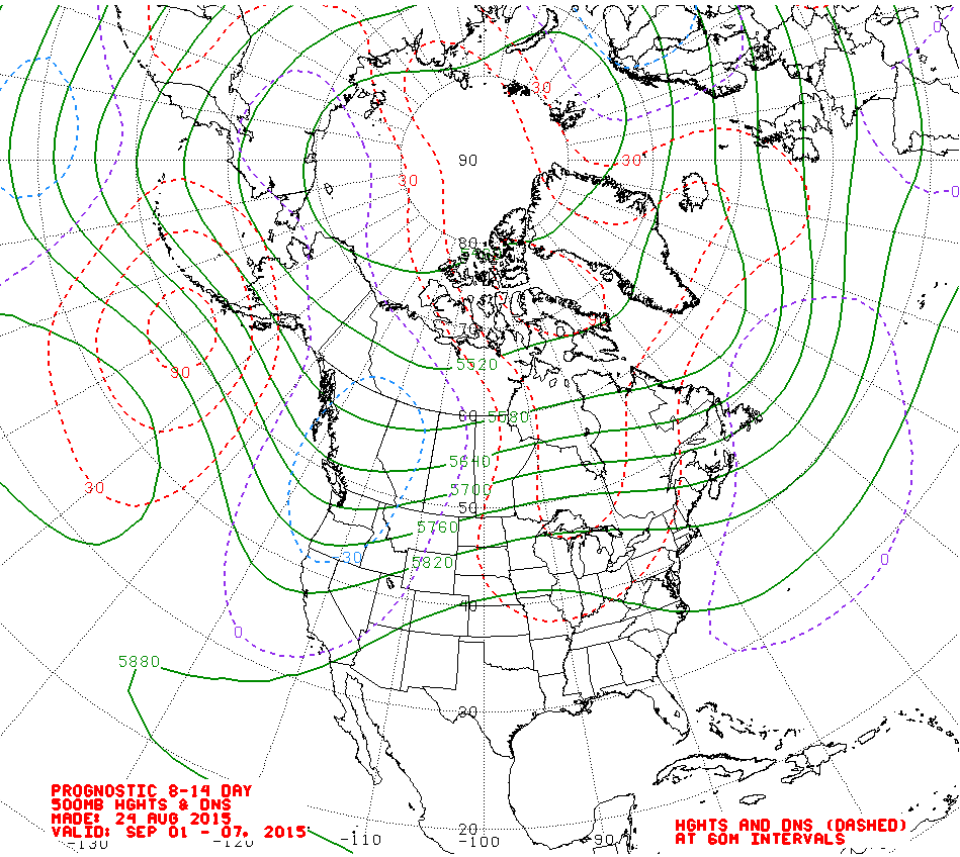
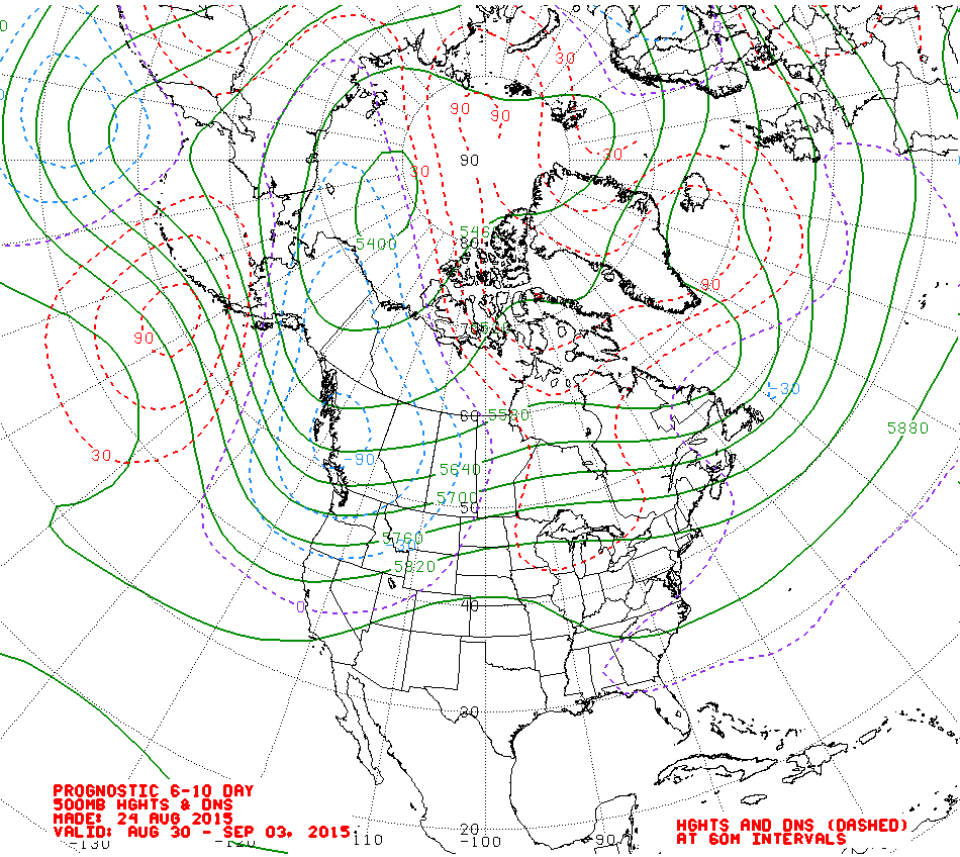


Day 13-15

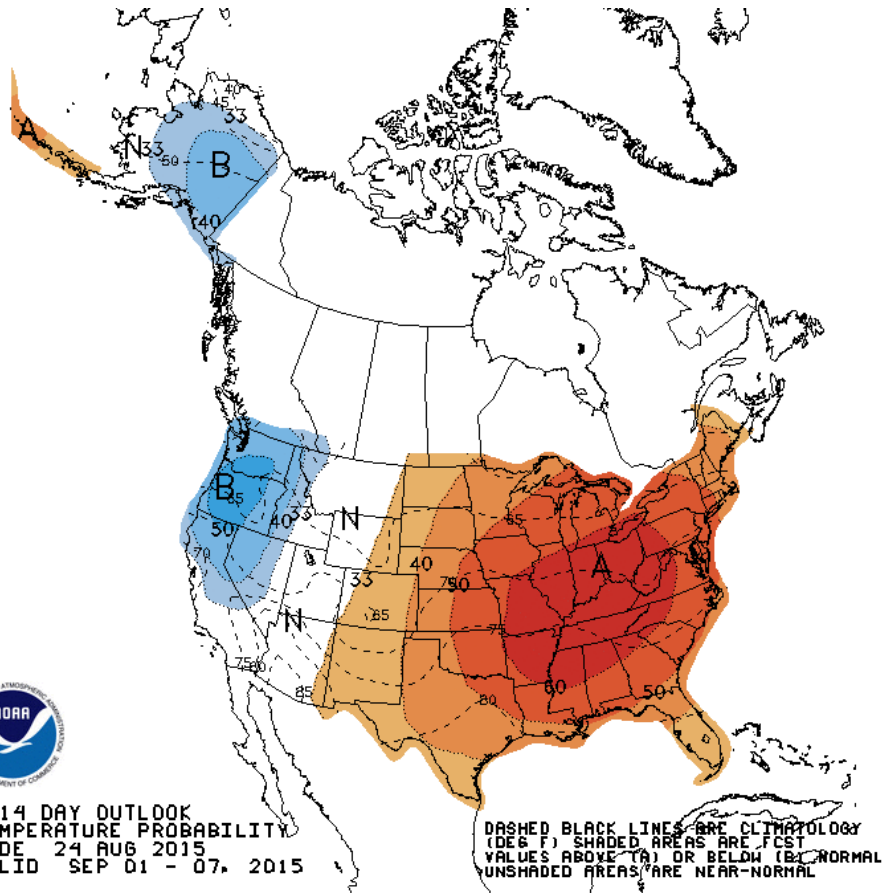


Track Count



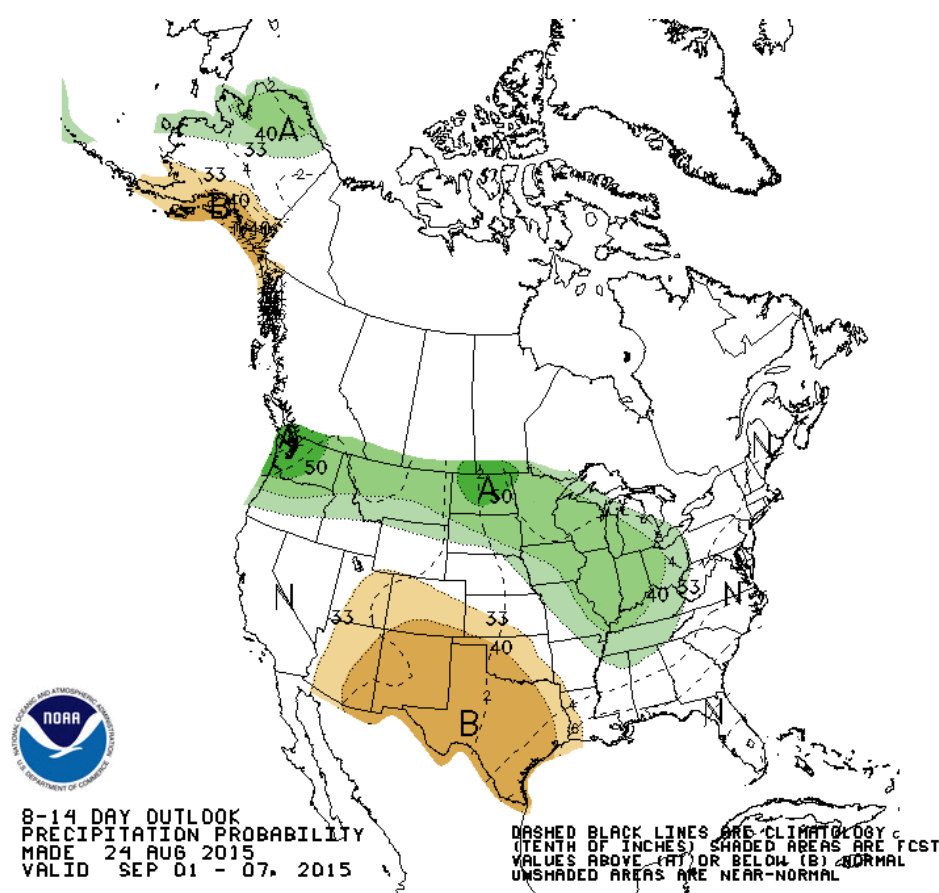
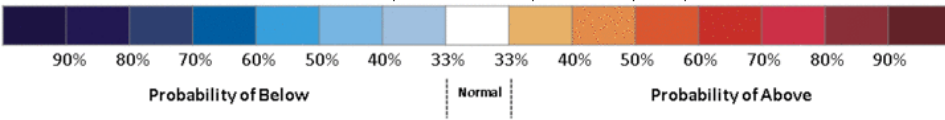


Week 2 – Temperature and Precipitation



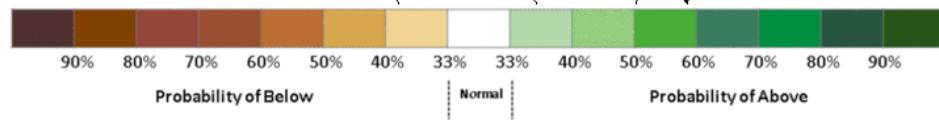
8-14 DAY OUTLOOK
TEMPERATURE PROBABILITY
MADE 24 AUG 2015
VALID SEP 01 - 07, 2015

DASHED BLACK LINES ARE CLIMATOLOGY (DEG F). SHADED AREAS ARE FCST VALUES ABOVE (A) OR BELOW (B) NORMAL. UNSHADED AREAS ARE NEAR-NORMAL.



8-14 DAY OUTLOOK
PRECIPITATION PROBABILITY
MADE 24 AUG 2015
VALID SEP 01 - 07, 2015

DASHED BLACK LINES ARE CLIMATOLOGY (TENTH OF INCHES). SHADED AREAS ARE FCST VALUES ABOVE (A) OR BELOW (B) NORMAL. UNSHADED AREAS ARE NEAR-NORMAL.

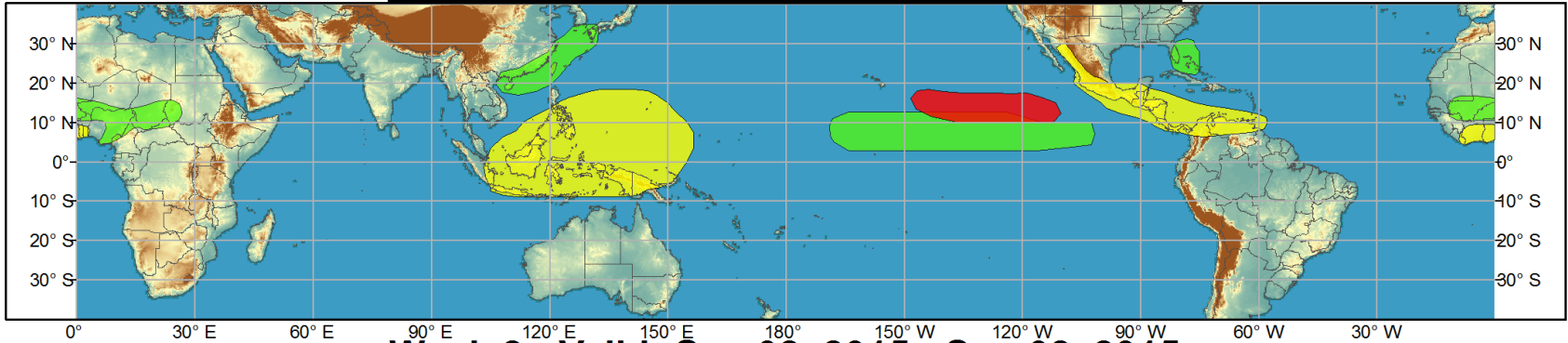




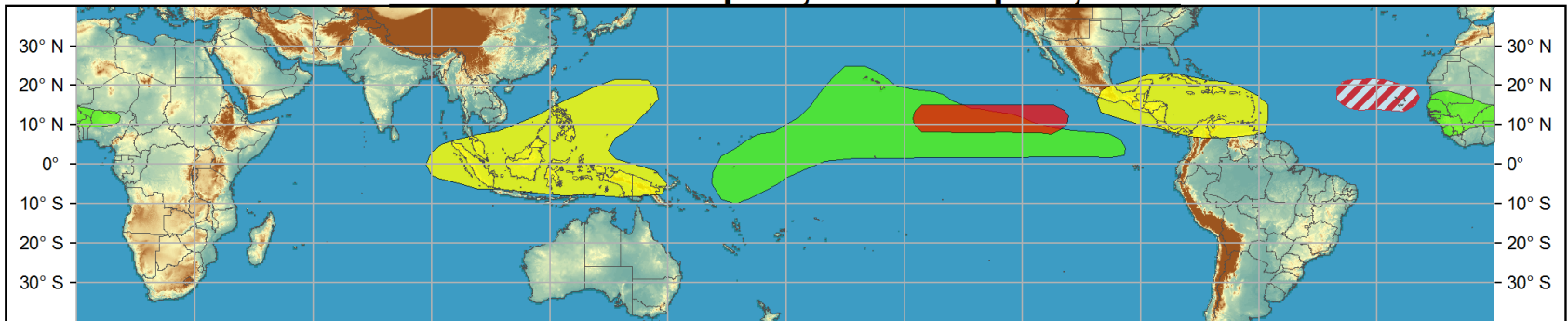
Global Tropics Hazards and Benefits Outlook - Climate Prediction Center



Week 1 - Valid: Aug 26, 2015 - Sep 01, 2015



Week 2 - Valid: Sep 02, 2015 - Sep 08, 2015



Confidence

High Moderate

- Tropical Cyclone Formation** Development of a tropical cyclone (tropical depression - TD, or greater strength).
- Above-average rainfall** Weekly total rainfall in the upper third of the historical range.
- Below-average rainfall** Weekly total rainfall in the lower third of the historical range.
- Above-normal temperatures** 7-day mean temperatures in the upper third of the historical range.
- Below-normal temperatures** 7-day mean temperatures in the lower third of the historical range.

Produced: 08/25/2015

Forecaster: Gottschalck

Product is updated once per week, except from 6/1 - 11/30 for the region from 120E to 0, 0 to 40N. The product targets broad scale conditions integrated over a 7-day period for US interests only. Consult your local responsible forecast agency.

