

Global Tropics Hazards And Benefits Outlook

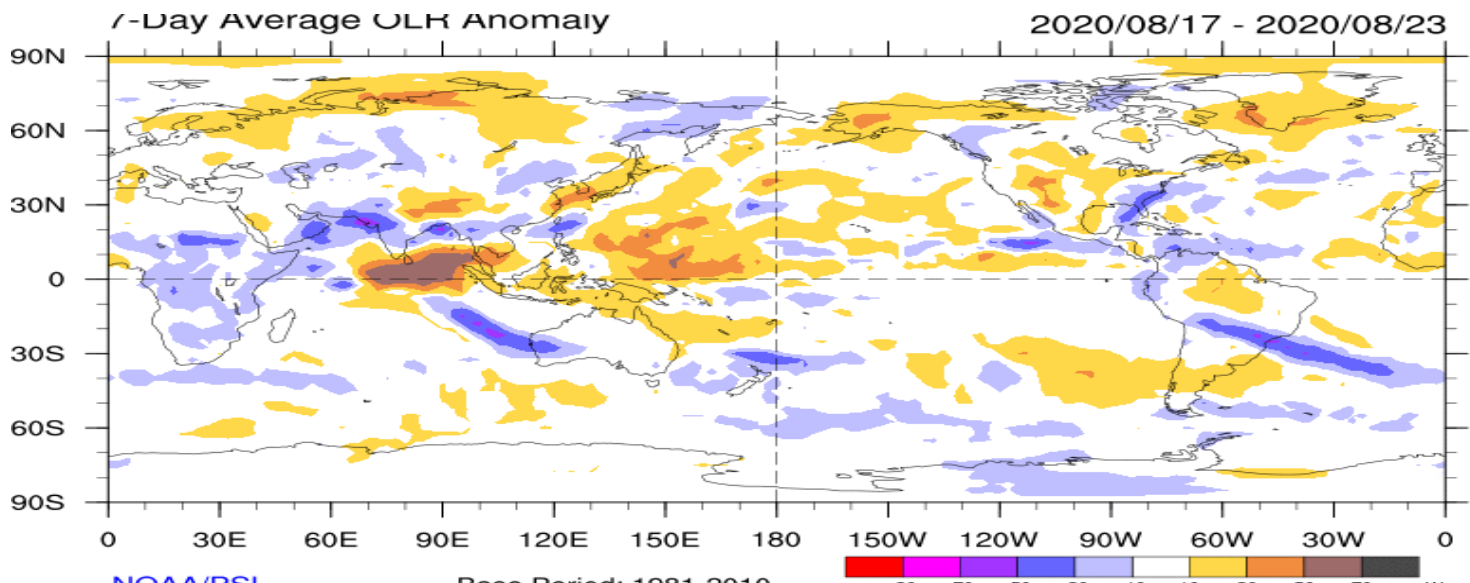
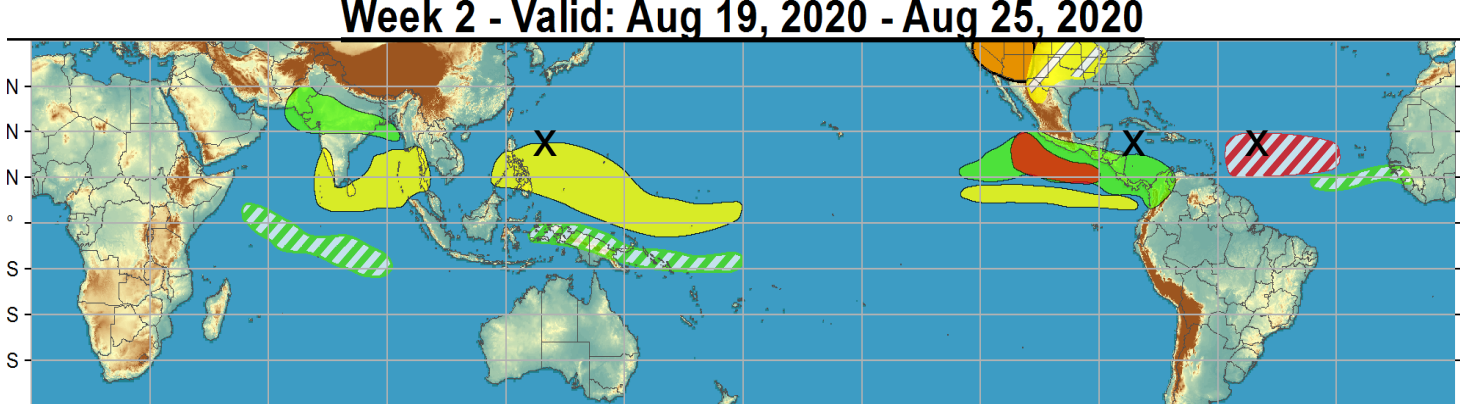
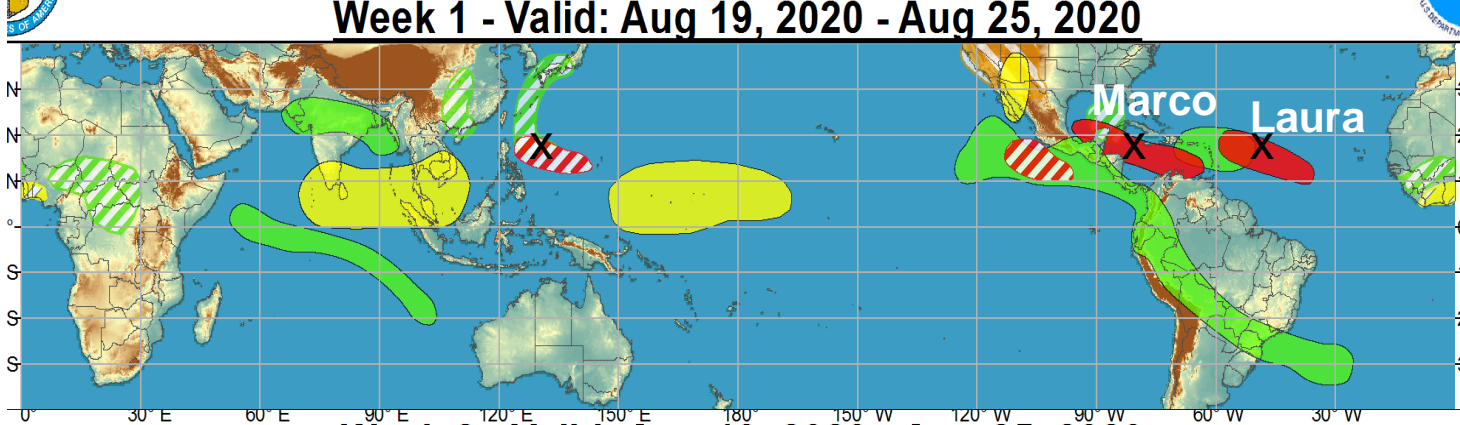
8/25/2020

Brad Pugh

Outline

1. Review of Recent Conditions
2. Synopsis of Climate Modes
3. GTH Outlook and Forecast Discussion
4. Connections to U.S. Impacts

Outlook Review



Cool shading
More clouds/rain

Warm shading
Less clouds/rain

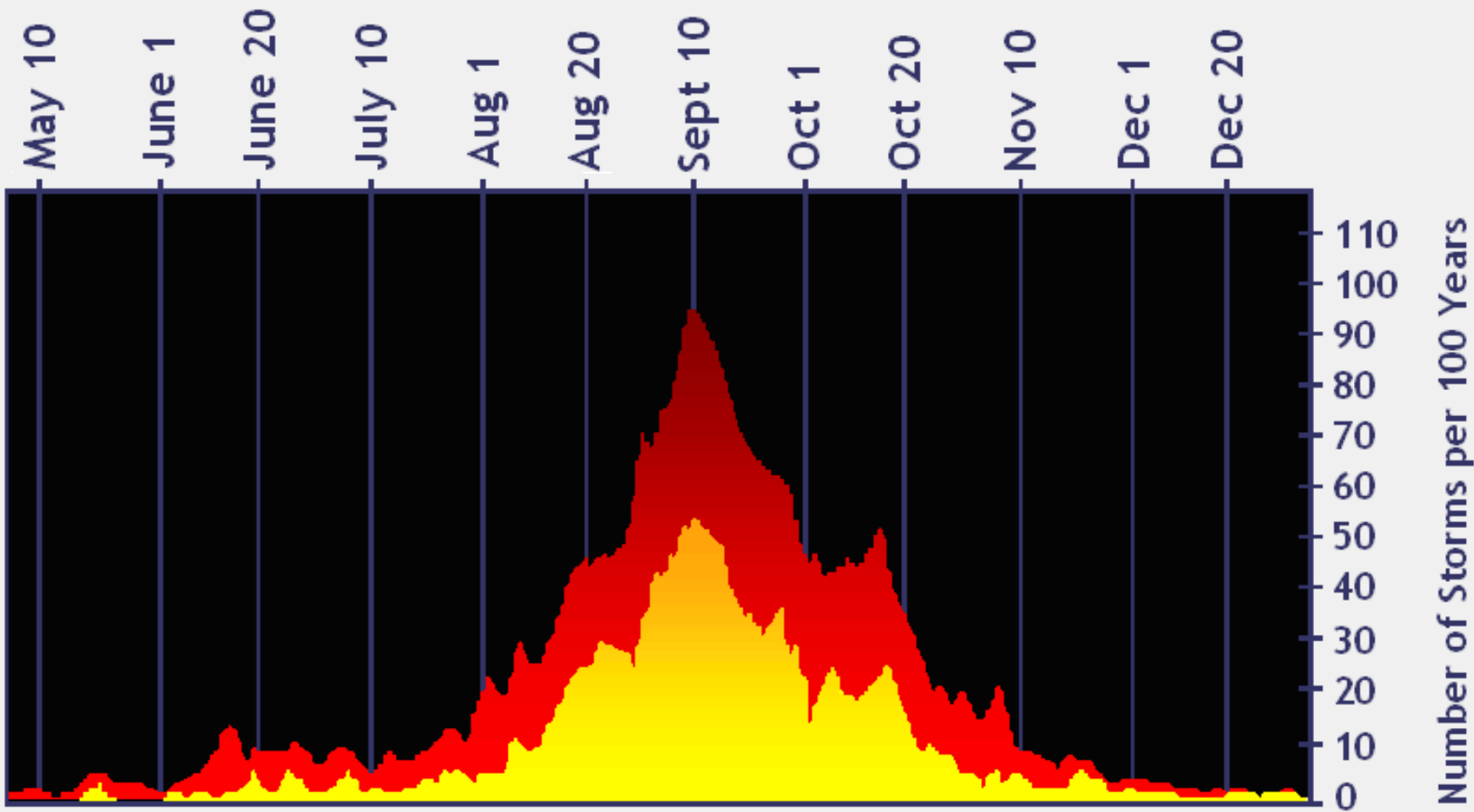
Synopsis of Climate Modes

ENSO: (August 13, 2020 Update)

- ENSO Alert System Status: [La Niña Watch](#) (next update **September 10**)
- There is a ~60% chance of La Niña development during Northern Hemisphere fall 2020 and continuing through winter 2020-21 (~55% chance).

MJO and other subseasonal tropical variability:

- The MJO continues to propagate eastward with its enhanced phase over Africa.
- Dynamical models are in less agreement but the MJO is expected to shift east to the Indian Ocean during the next week.
- Enhanced waves emerging from Africa, the low-frequency base state, and climatology support an active Atlantic basin through at least early September.



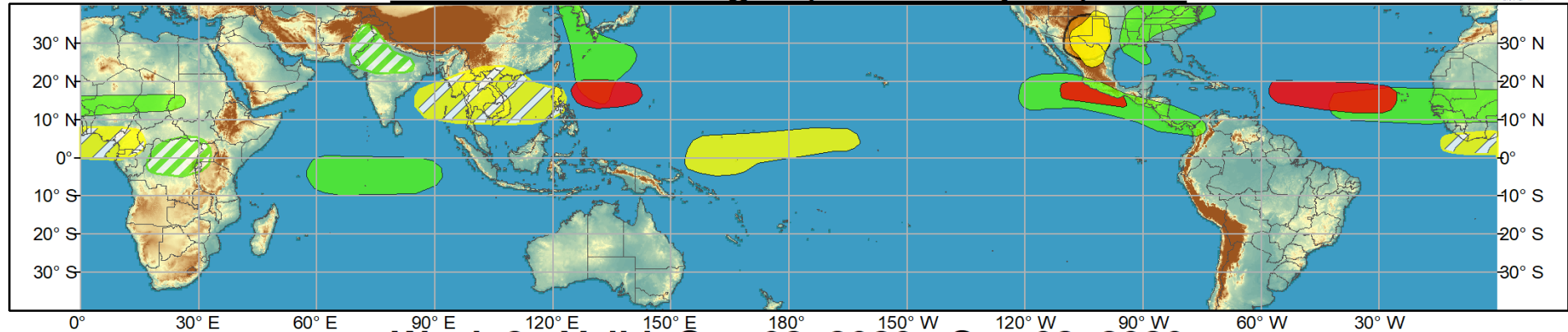
■ Hurricanes and Tropical Storms
■ Hurricanes

NOAA

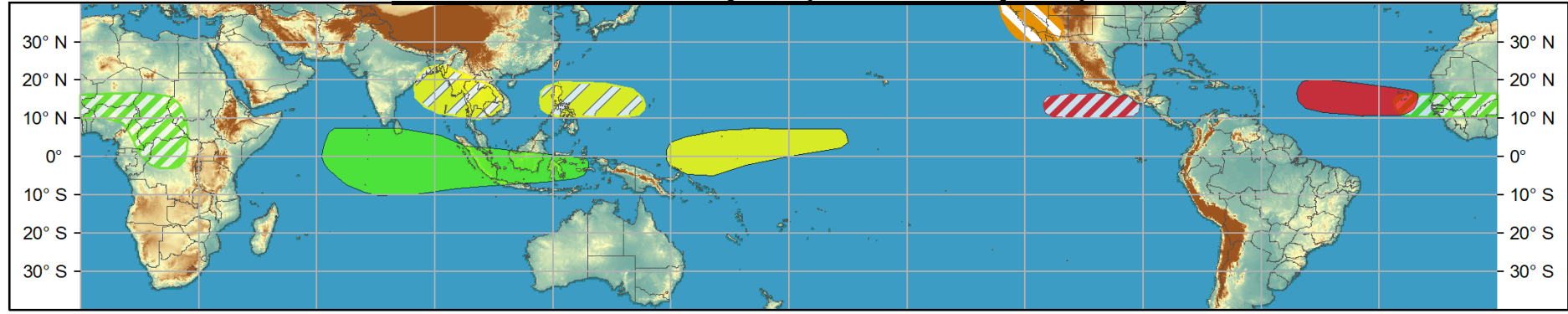


Global Tropics Hazards and Benefits Outlook - Climate Prediction Center

Week 1 - Valid: Aug 26, 2020 - Sep 01, 2020



Week 2 - Valid: Sep 02, 2020 - Sep 08, 2020



Confidence

High Moderate

- Tropical Cyclone Formation** Development of a tropical cyclone (tropical depression - TD, or greater strength).
- Above-average rainfall** Weekly total rainfall in the upper third of the historical range.
- Below-average rainfall** Weekly total rainfall in the lower third of the historical range.
- Above-normal temperatures** 7-day mean temperatures in the upper third of the historical range.
- Below-normal temperatures** 7-day mean temperatures in the lower third of the historical range.

Produced: 08/25/2020
Forecaster: Pugh

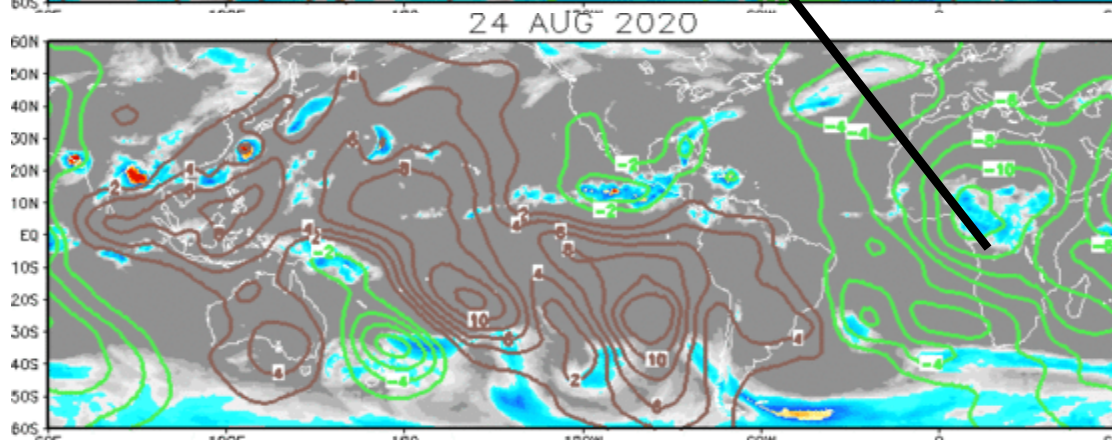
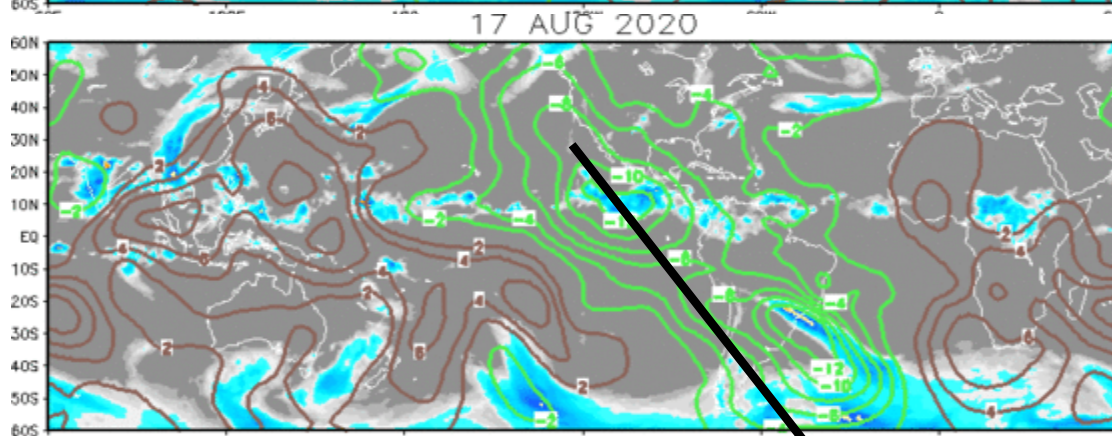
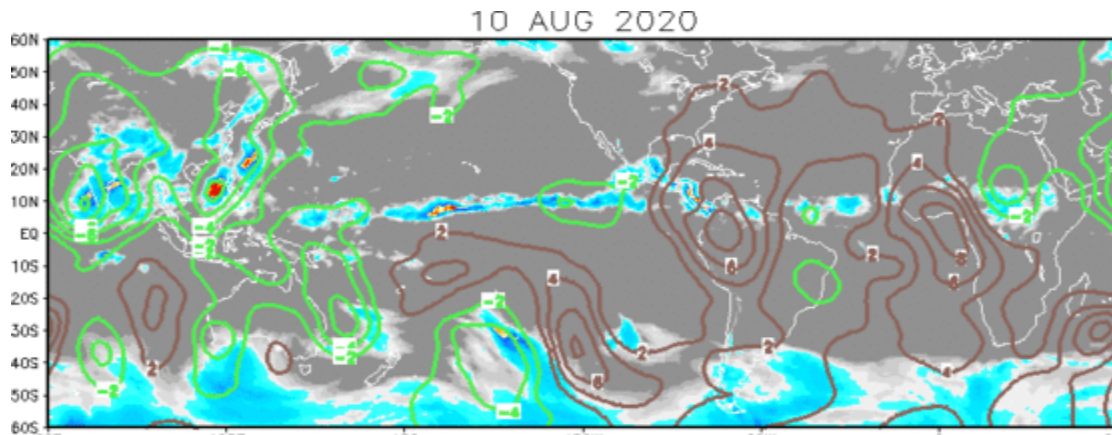
Product is updated once per week, except from 6/1 - 11/30 for the region from 120E to 0, 0 to 40N. The product targets broad scale conditions integrated over a 7-day period for US interests only. Consult your local responsible forecast agency.



IR Satellite & 200-hpa Velocity Potential Anomalies

Green: Enhanced Divergence

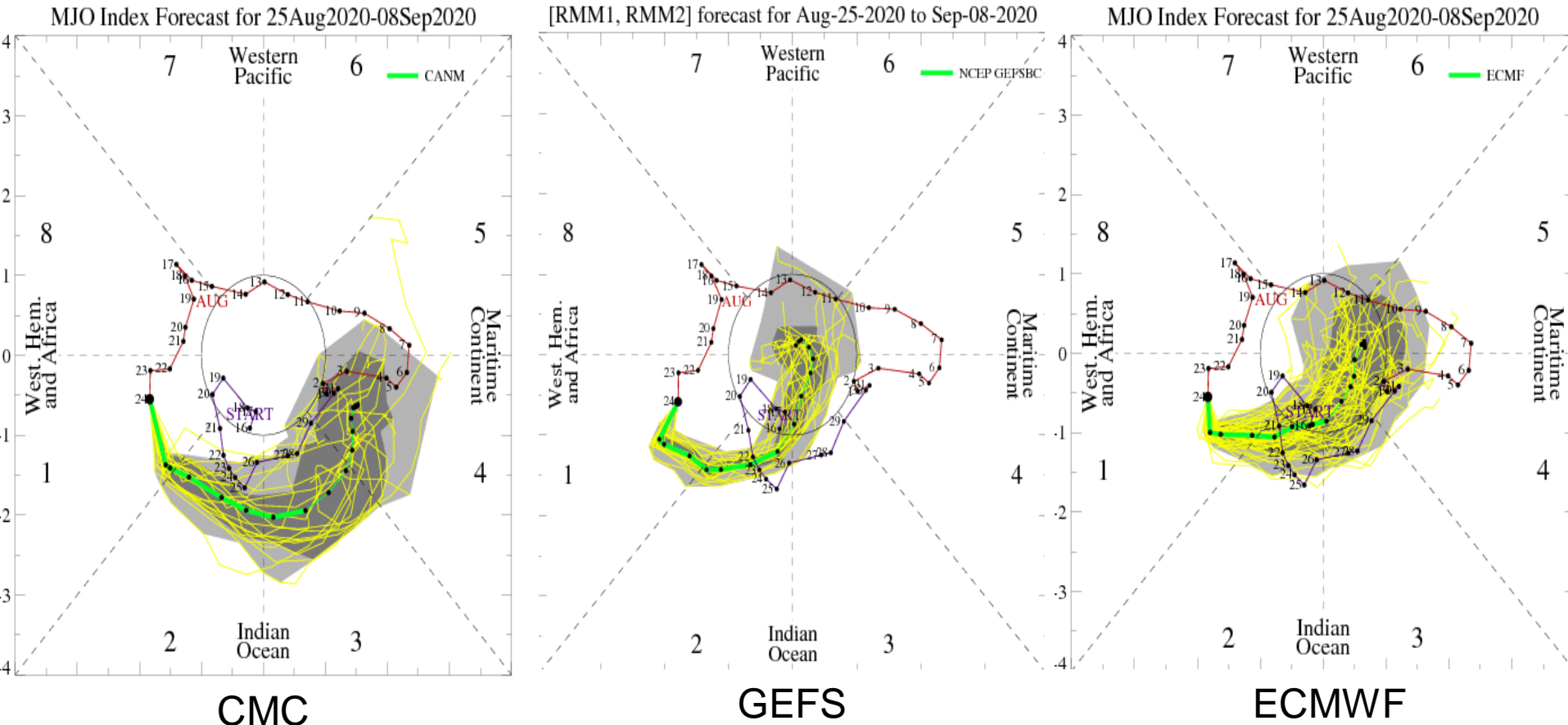
Brown: Enhanced Convergence



Coherent Wave-1 spatial pattern

Enhanced phase shifted east from the Americas to Africa

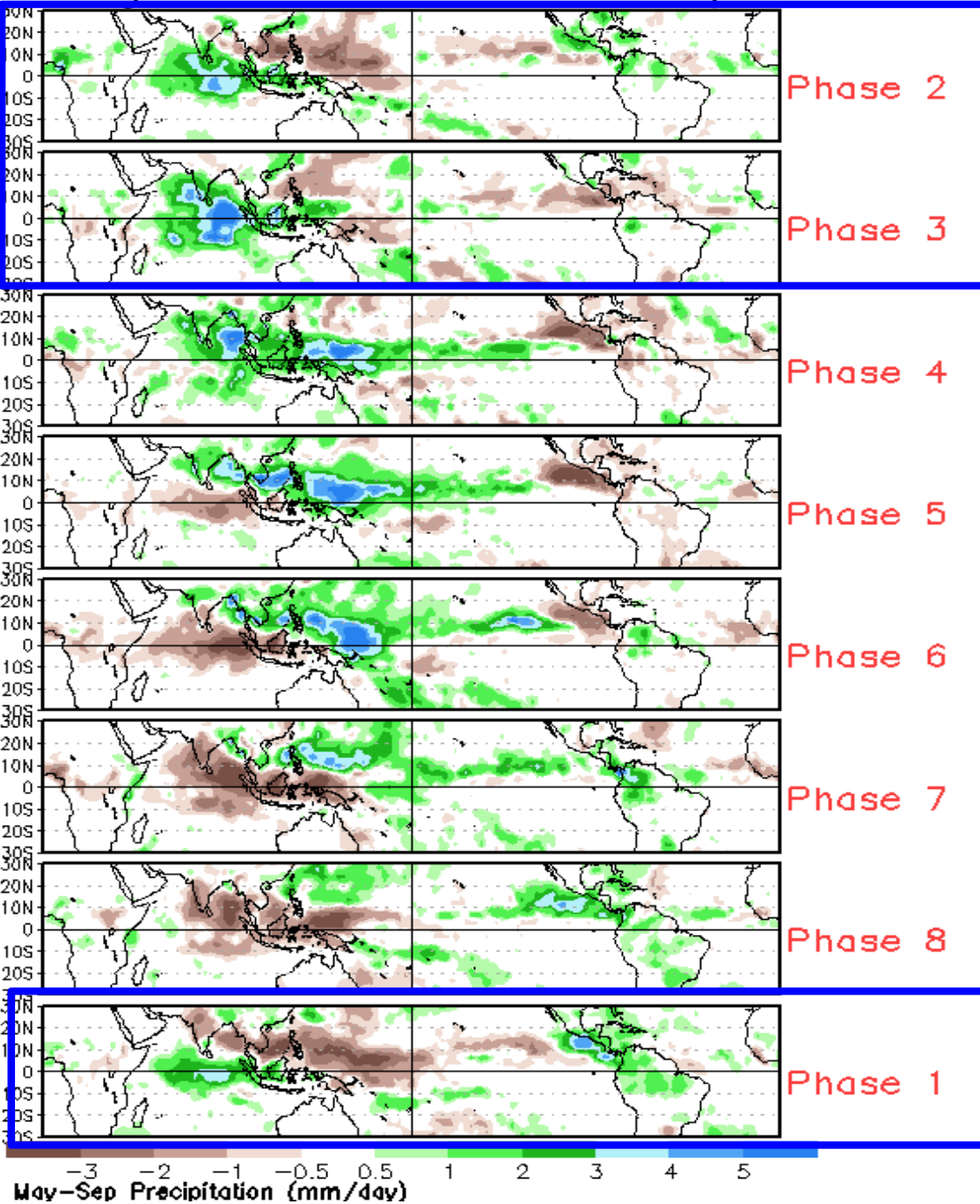
MJO Observation/Forecast



Although there are differences in amplitude, all models depict eastward propagation

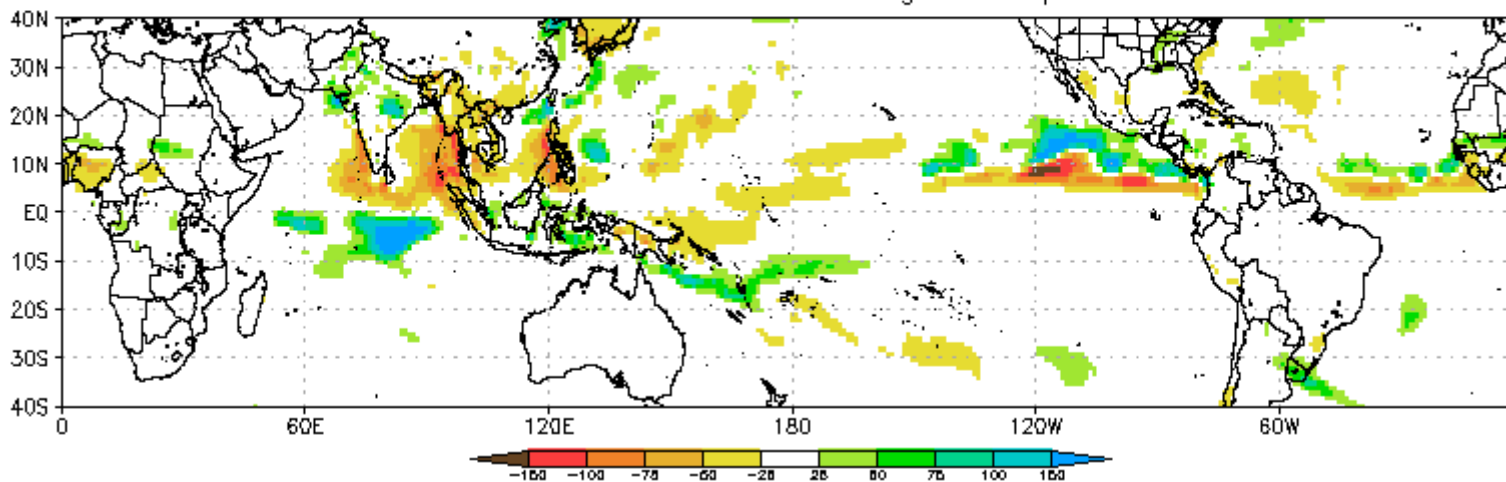
Given the well-defined MJO currently, the Canadian ensemble mean is favored

Average Conditions when the MJO is present

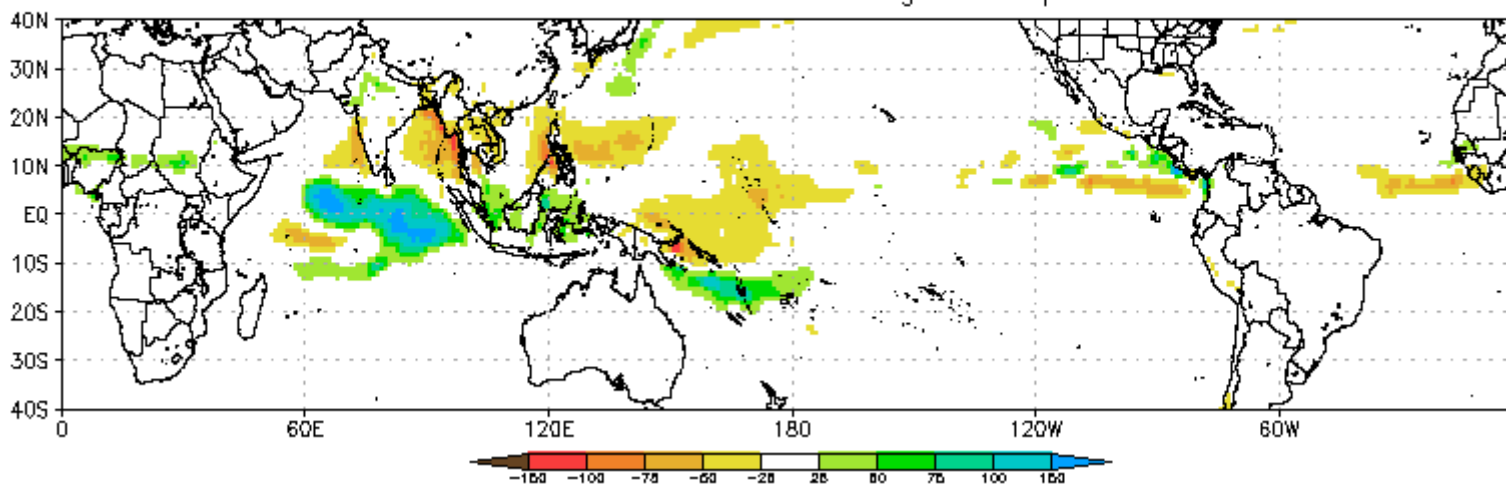


CAVEAT: These panels are representative of robust MJO events.

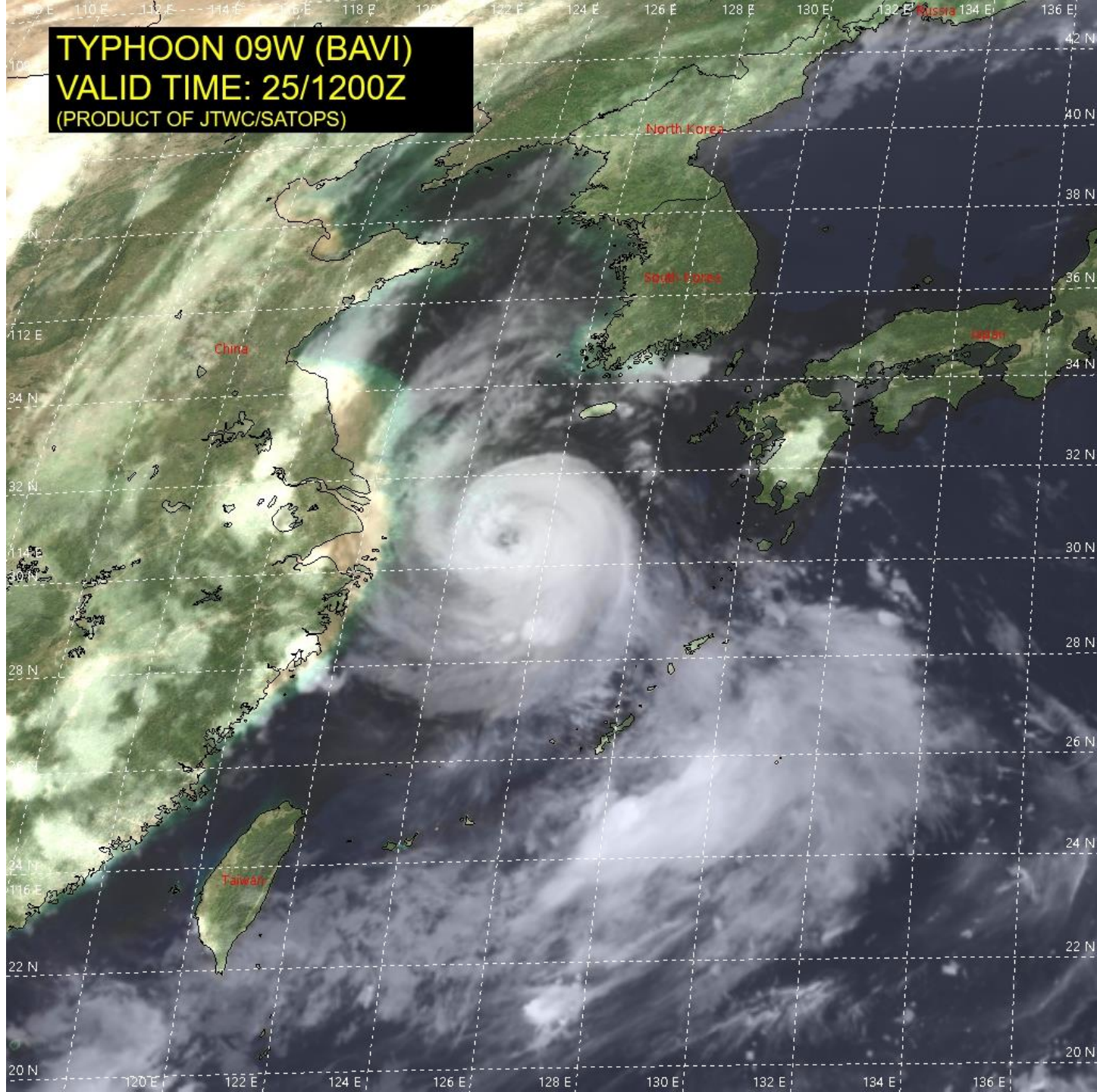
CFS Precipitation Anomalies (mm) Issued 24Aug2020
Week-1 Forecast Ending 01Sep2020

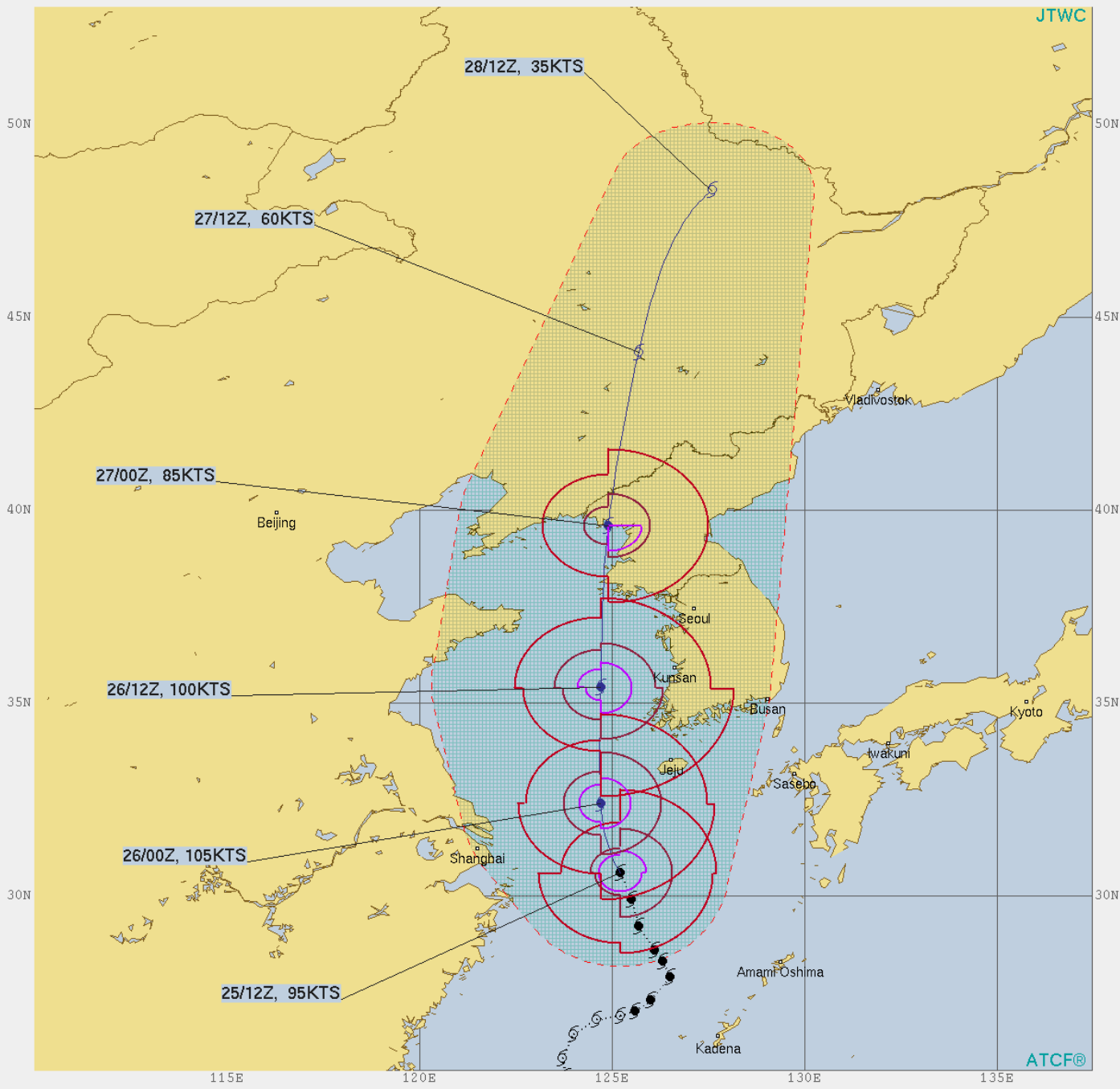


CFS Precipitation Anomalies (mm) Issued 24Aug2020
Week-2 Forecast Ending 08Sep2020



TYPHOON 09W (BAVI)
VALID TIME: 25/1200Z
(PRODUCT OF JTWC/SATOPS)





TYPHOON 09W (BAVI) WARNING #17
 WTPN31 PGTW 251500
 251200Z POSIT: NEAR 30.6N 125.2E
 MOVING 340 DEGREES TRUE AT 07 KNOTS
 MAXIMUM SIGNIFICANT WAVE HEIGHT: 34 FEET
 25/12Z, WINDS 095 KTS, GUSTS TO 115 KTS
 26/00Z, WINDS 105 KTS, GUSTS TO 130 KTS
 26/12Z, WINDS 100 KTS, GUSTS TO 125 KTS
 27/00Z, WINDS 085 KTS, GUSTS TO 105 KTS
 27/12Z, WINDS 060 KTS, GUSTS TO 075 KTS
 28/12Z, WINDS 035 KTS, GUSTS TO 045 KTS

CPA TO:	NM	DTG
CAMP KENGUN	311	25/17Z
SHANGHAI	175	25/21Z
SASEBO	253	26/04Z
IWAKUNI	374	26/09Z
GWANGJU AB	104	26/11Z
CHINHAE	196	26/12Z
GIMHAE AB	206	26/12Z
PUSAN	216	26/12Z
KUNSAN AB	92	26/14Z
POHANG	227	26/14Z
TAEGU	194	26/14Z
CHEONGJU AB	133	26/16Z
CAMP HUMPHREYS	108	26/17Z
OSAN AB	108	26/17Z
SUWON AB	108	26/17Z
INCHON	88	26/18Z
SEOUL AB	112	26/18Z
YONGSAN AIN	107	26/18Z
CAMP RED CLOUD	106	26/19Z
CAMP CASEY	111	26/20Z

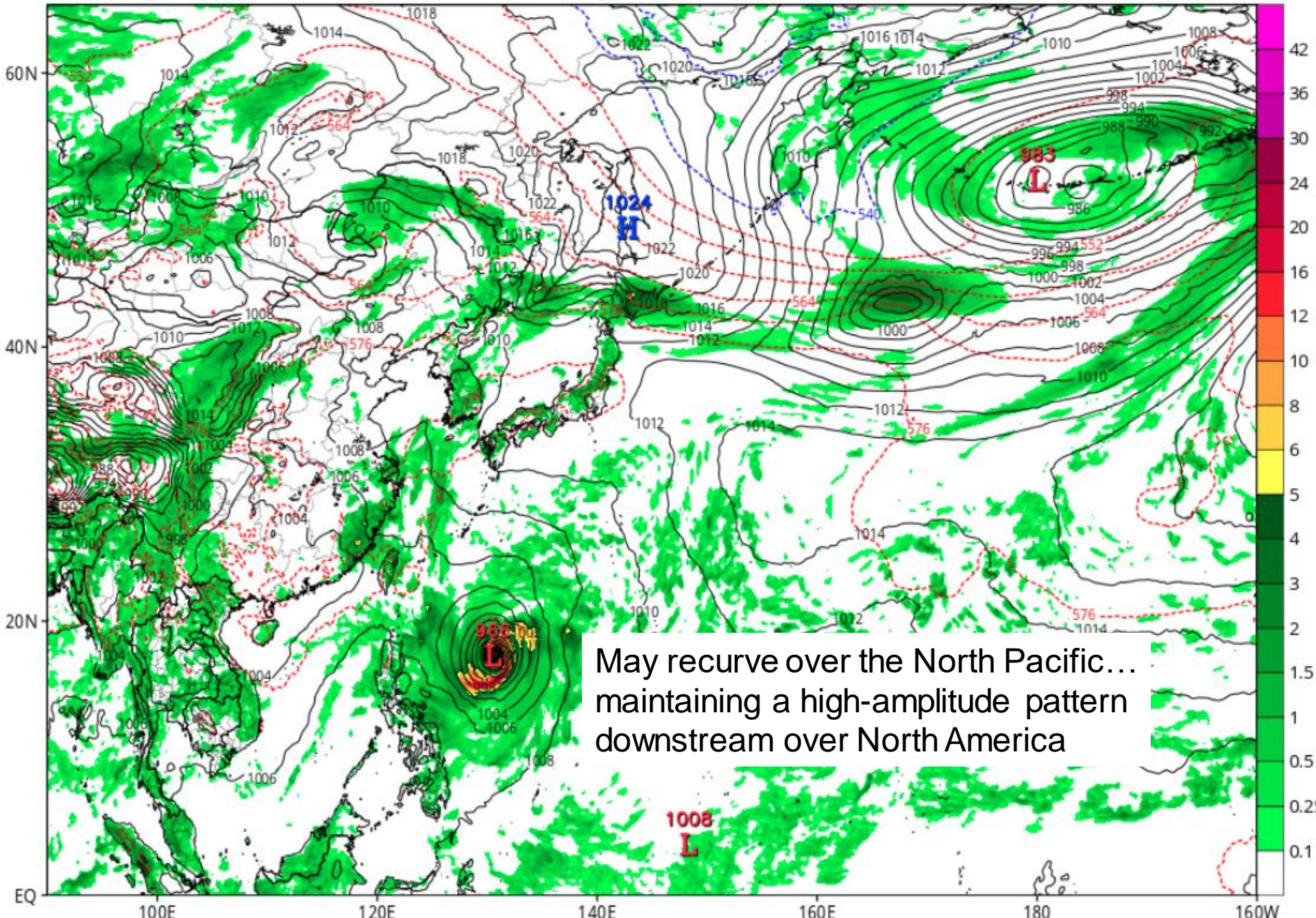
BEARING AND DISTANCE	DIR	DIST (NM)	TAU (HRS)
CHINHAE	214	327	0
KADENA AB	332	287	0
KUNSAN AB	193	326	0
OSAN AB	193	400	0
PUSAN	217	334	0
SASEBO	237	277	0
TAIPEI	030	384	0
CAMP HUMPHREYS	194	394	0
TAEGU	210	363	0
POHANG	214	386	0
SHANGHAI	100	194	0
GIMHAE AB	215	333	0
GWANGJU AB	197	282	0
CHEONGJU AB	198	384	0
CAMP KENGUN	247	319	0

- LESS THAN 34 KNOTS
- 34-63 KNOTS
- MORE THAN 63 KNOTS
- FORECAST CYCLONE TRACK
- PAST CYCLONE TRACK
- DENOTES 34 KNOT WIND DANGER AREA/USN SHIP AVOIDANCE AREA
- FORECAST 34/50/64 KNOT WIND RADII (WINDS VALID OVER OPEN OCEAN ONLY)

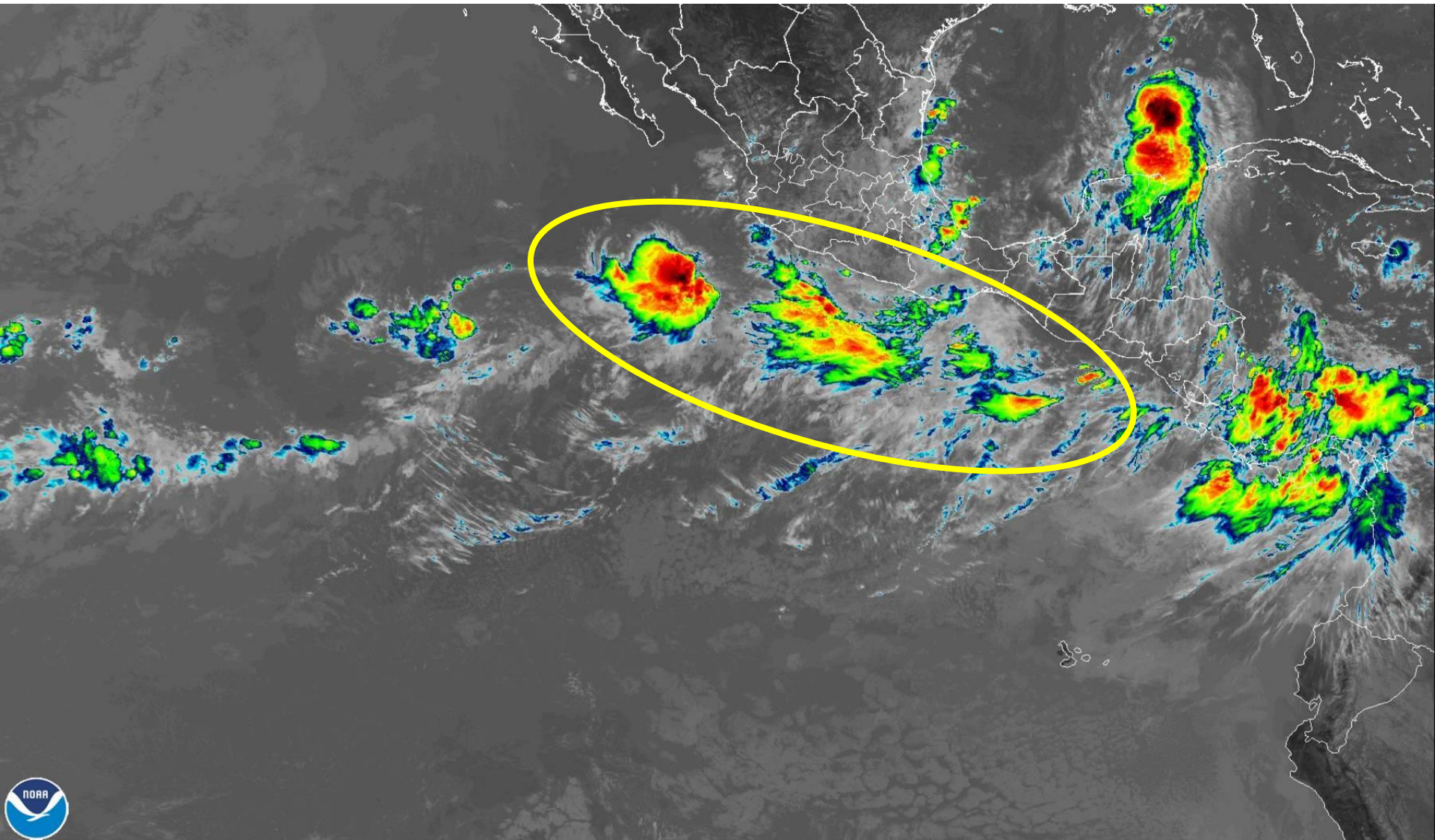
GFS 6-hour Averaged Precip Rate (mm/hr), MSLP (hPa) & 1000-500mb Thickness (dam)

Init: 12z Aug 25 2020 Forecast Hour: [96] valid at 12z Sat, Aug 29 2020

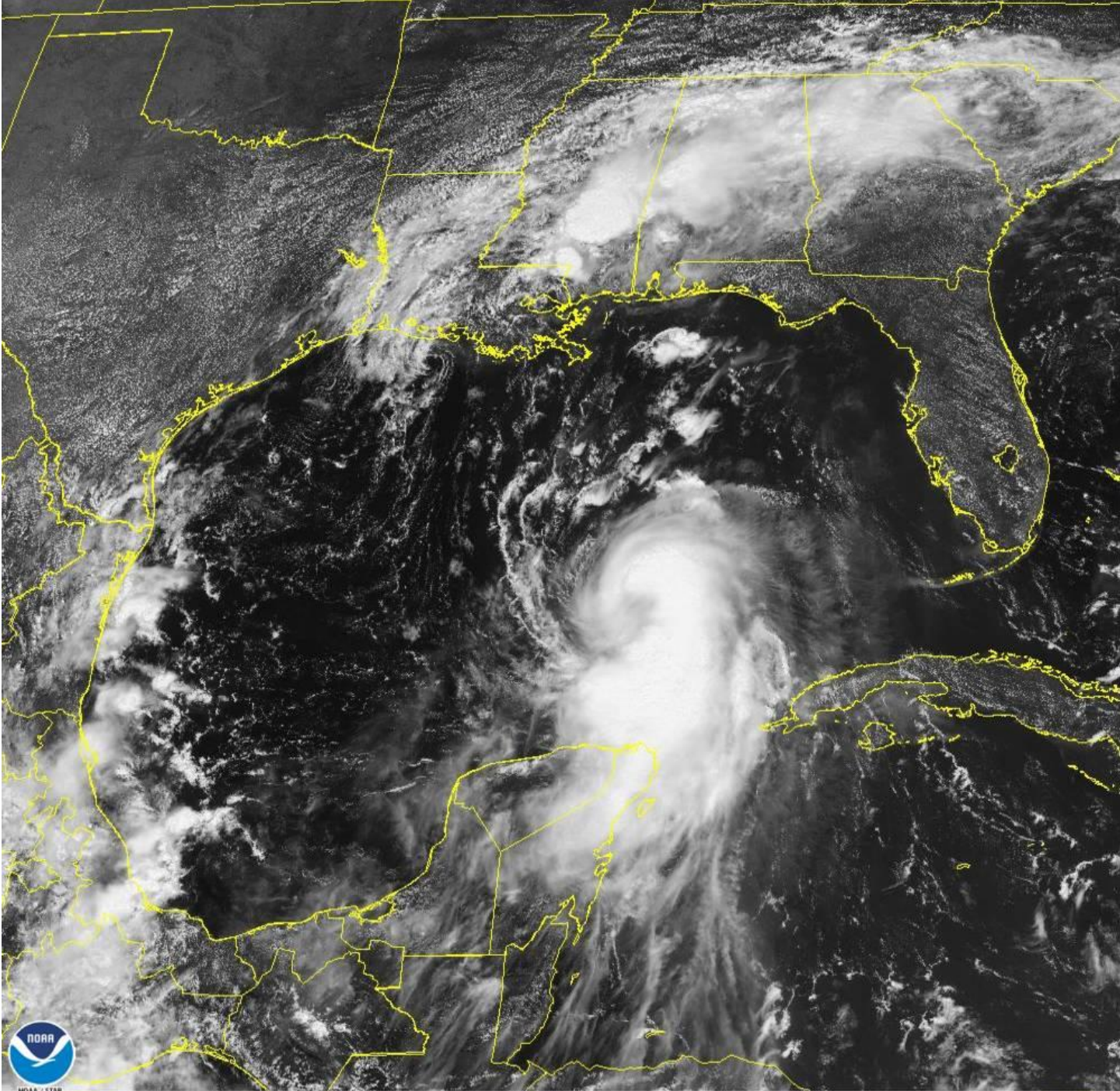
TROPICALTIDBITS.COM



May recurve over the North Pacific...
maintaining a high-amplitude pattern
downstream over North America



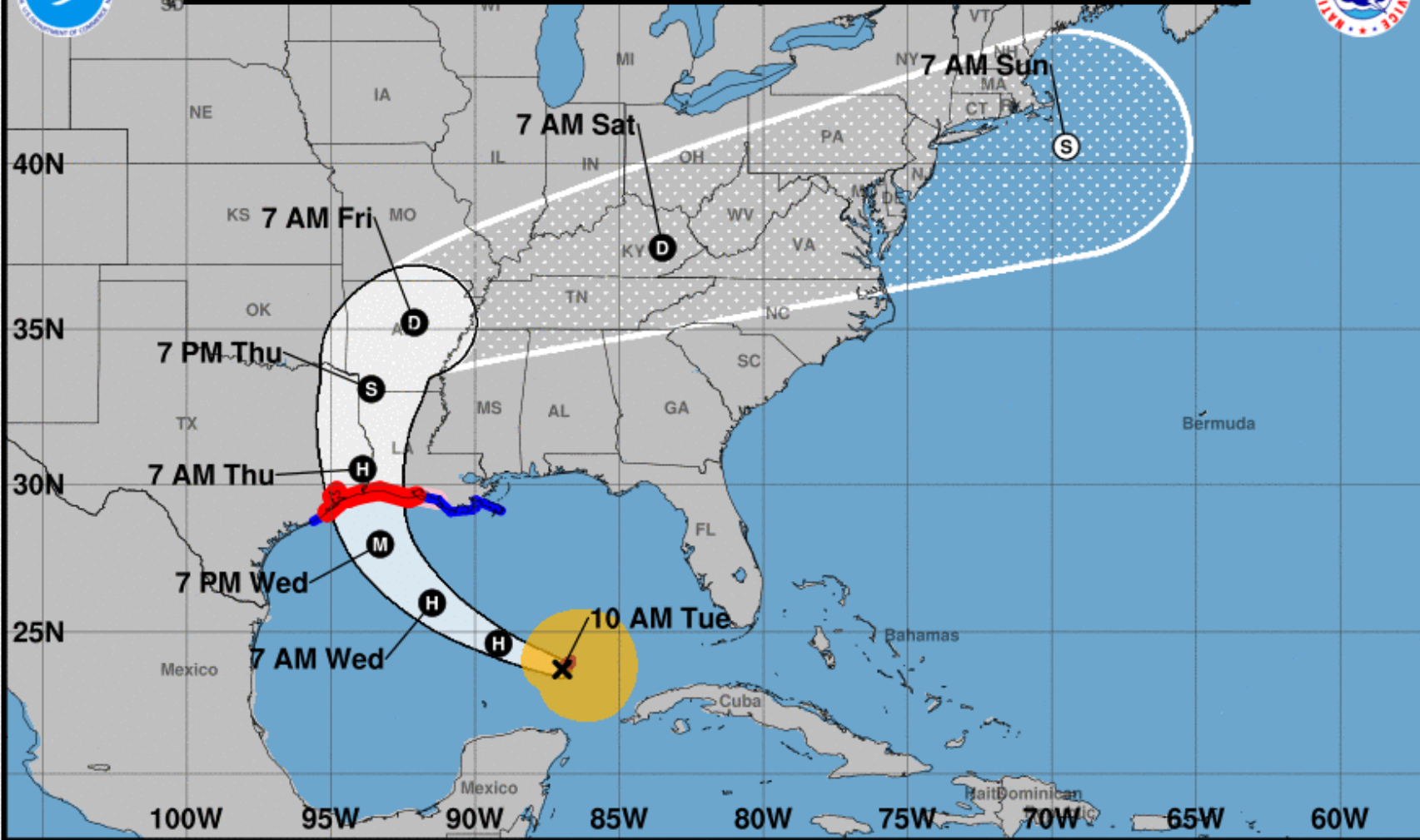
25 Aug 2020 17:20Z NOAA/NESDIS/STAR GOES-East Band 13



25 Aug 2020 17:31Z NOAA/NESDIS/STAR GOES-East Band 02



Note: The cone contains the probable path of the storm center but does not show the size of the storm. Hazardous conditions can occur outside of the cone.



Hurricane Laura
 Tuesday August 25, 2020
 10 AM CDT Advisory 23
 NWS National Hurricane Center

Current information: x
 Center location 23.7 N 87.0 W
 Maximum sustained wind 75 mph
 Movement WNW at 16 mph

Forecast positions:
 ● Tropical Cyclone ○ Post/Potential TC
 Sustained winds: D < 39 mph
 S 39-73 mph H 74-110 mph M > 110 mph

Potential track area:



Watches:

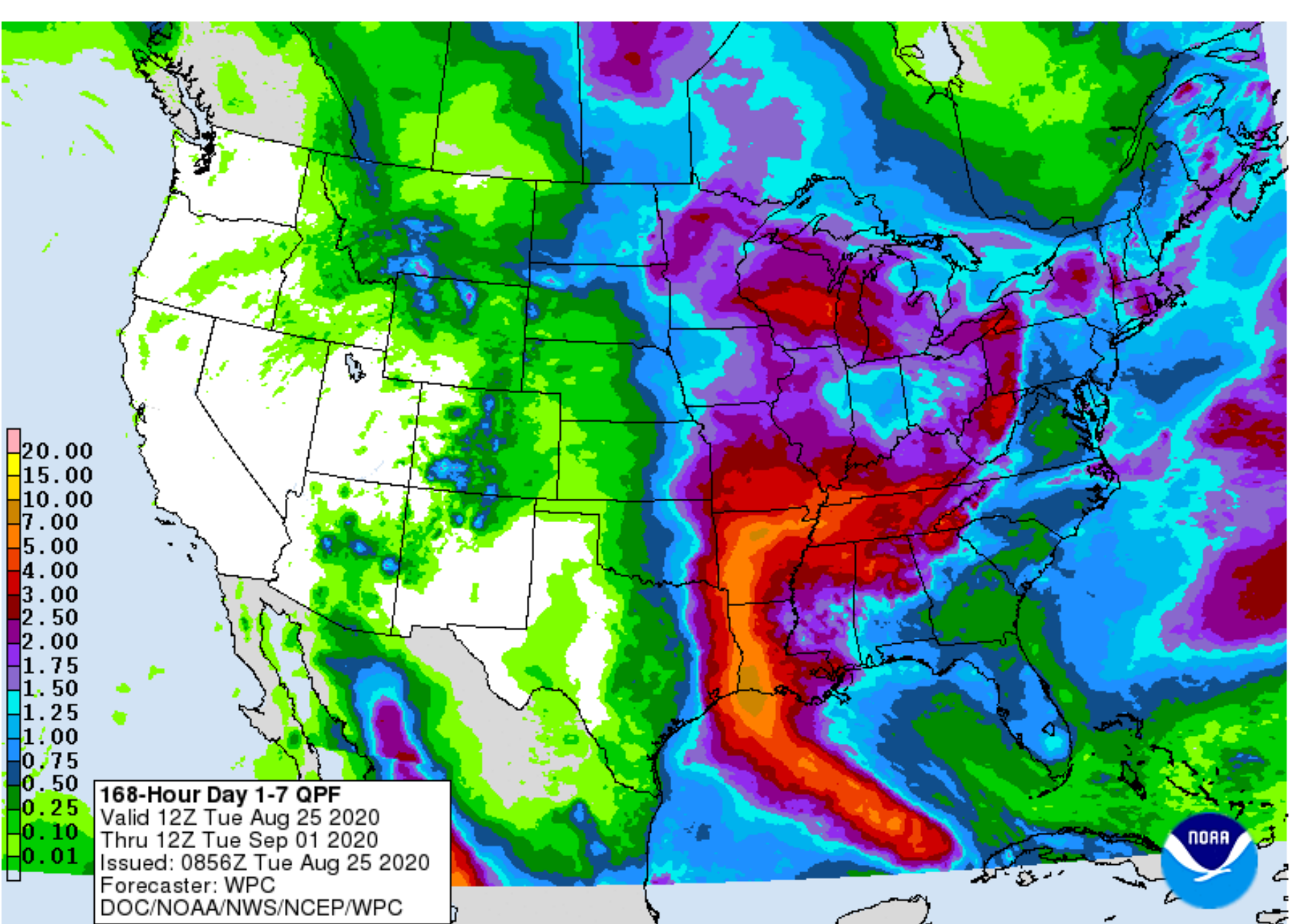


Warnings:



Current wind extent:

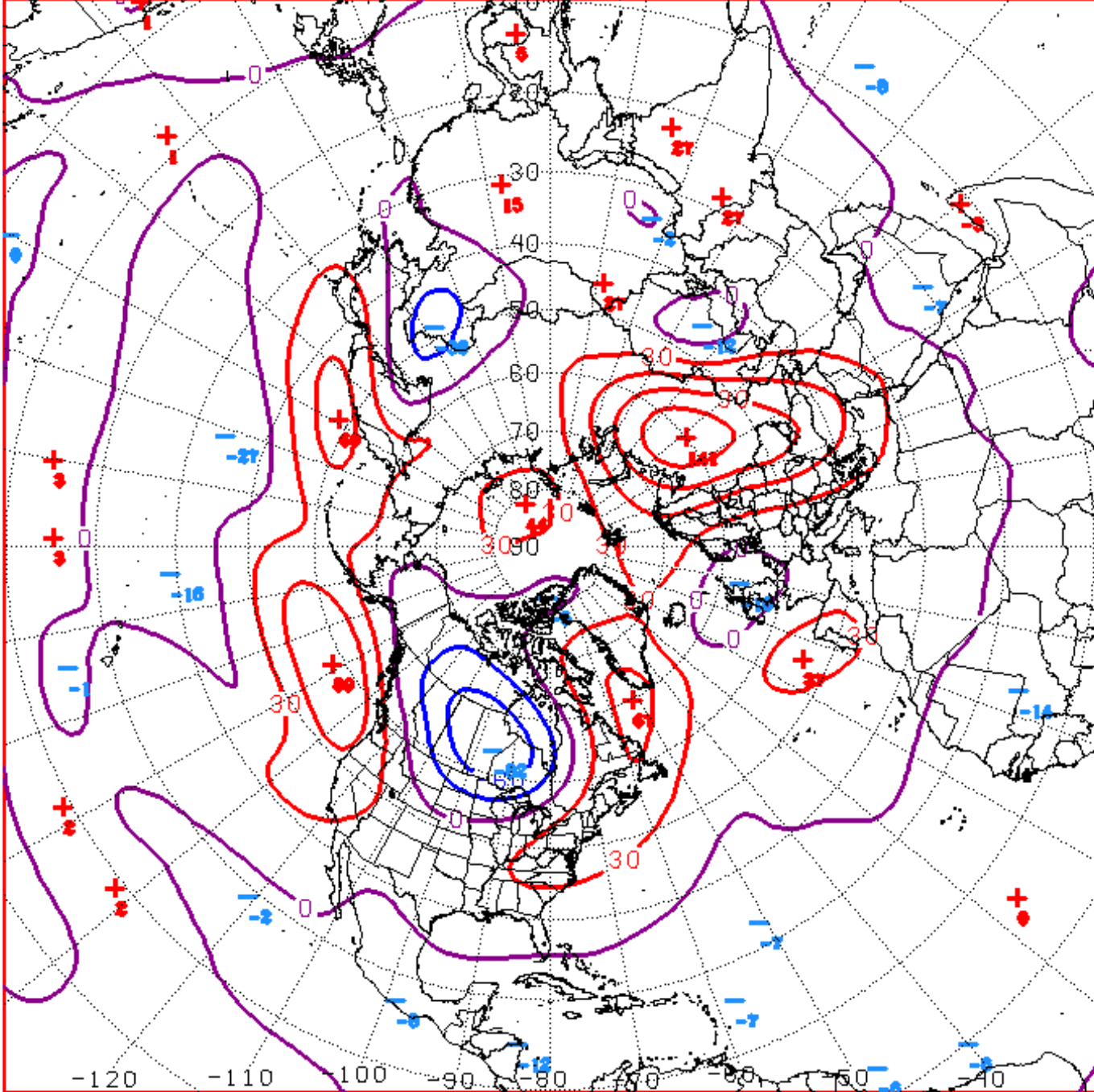




168-Hour Day 1-7 QPF
Valid 12Z Tue Aug 25 2020
Thru 12Z Tue Sep 01 2020
Issued: 0856Z Tue Aug 25 2020
Forecaster: WPC
DOC/NOAA/NWS/NCEP/WPC

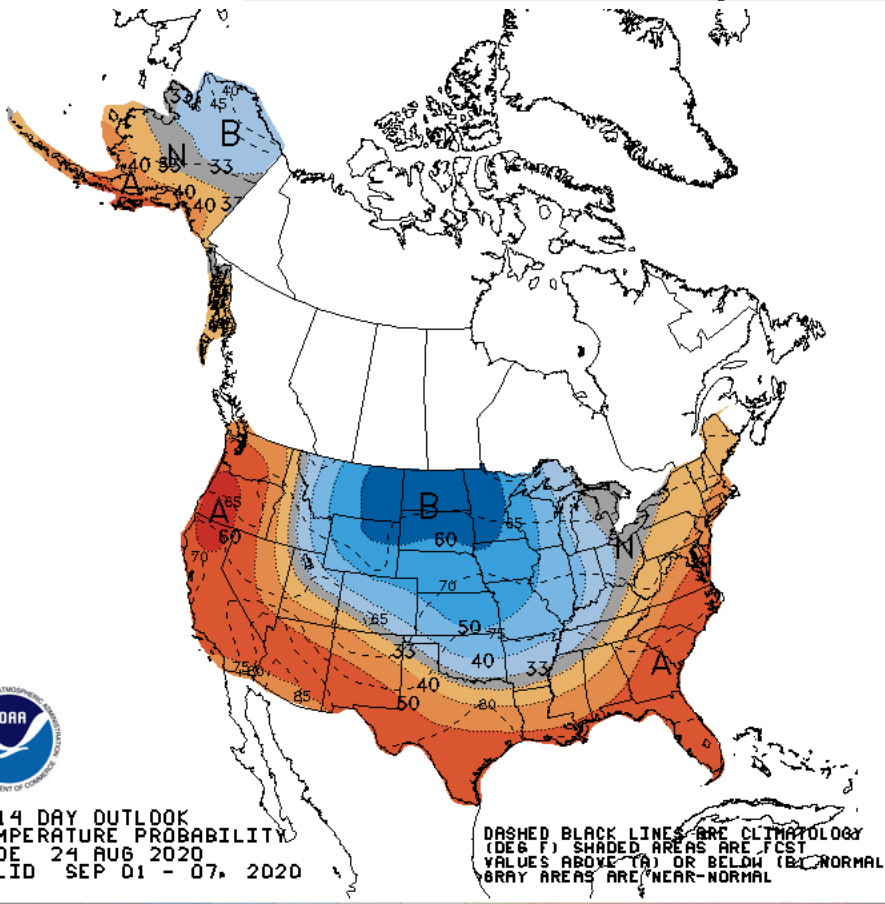


Connections to U.S. Impacts

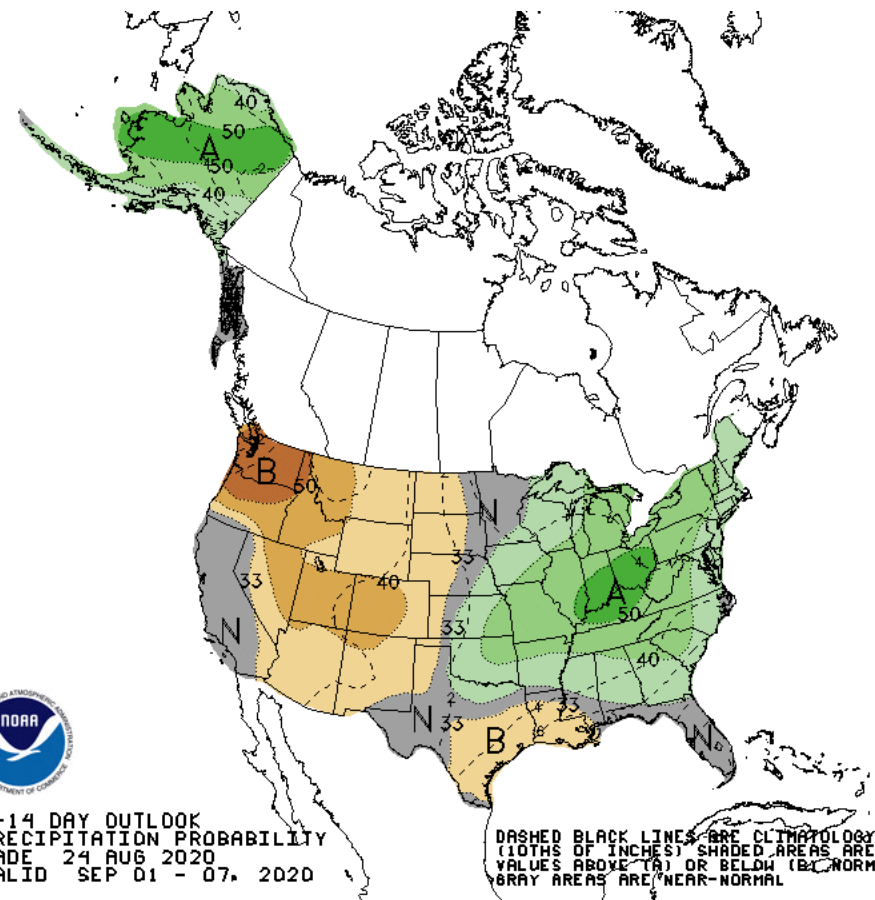
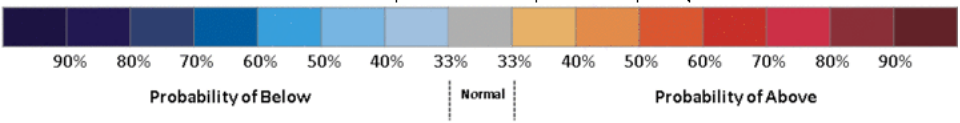


D+11 500 MB ANOMALIES FROM ALZ ENSM
 CPC MAP MADE AUG 25 2020 1251 UTC CNTD SEP 05 2020

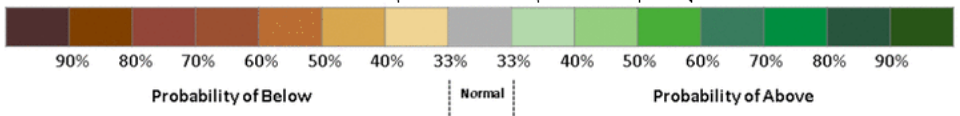
Week 2 – Temperature and Precipitation



8-14 DAY OUTLOOK
TEMPERATURE PROBABILITY
MADE 24 AUG 2020
VALID SEP 01 - 07, 2020



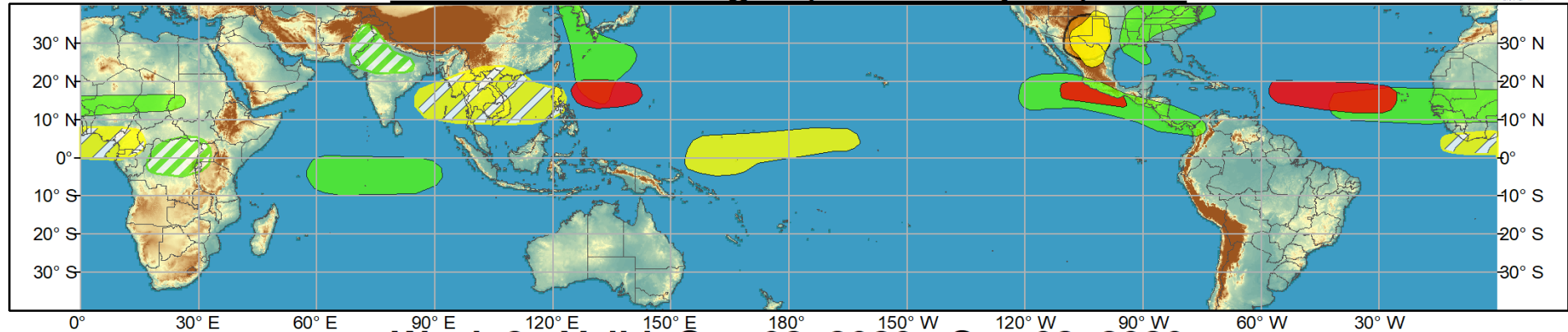
8-14 DAY OUTLOOK
PRECIPITATION PROBABILITY
MADE 24 AUG 2020
VALID SEP 01 - 07, 2020



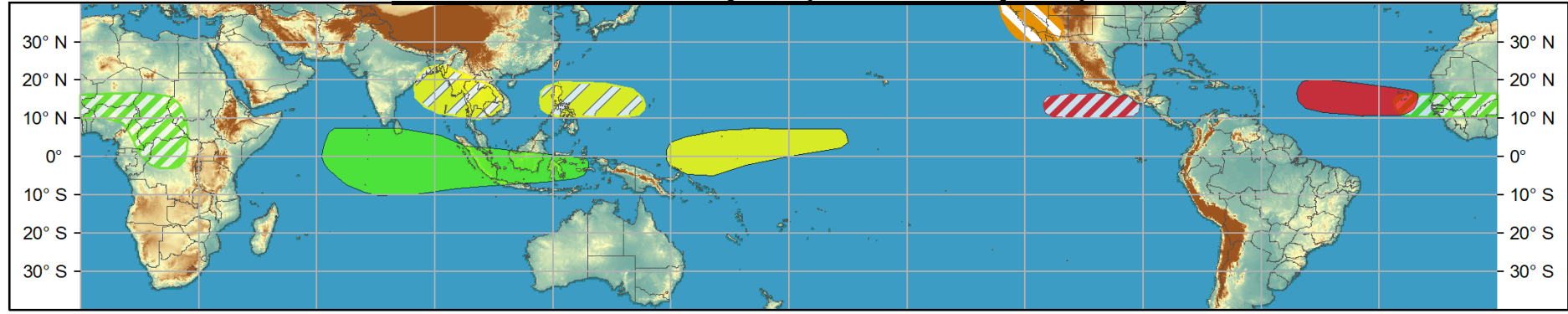


Global Tropics Hazards and Benefits Outlook - Climate Prediction Center

Week 1 - Valid: Aug 26, 2020 - Sep 01, 2020



Week 2 - Valid: Sep 02, 2020 - Sep 08, 2020



Produced: 08/25/2020
Forecaster: Pugh

Confidence		
High	Moderate	
		Tropical Cyclone Formation Development of a tropical cyclone (tropical depression - TD, or greater strength).
		Above-average rainfall Weekly total rainfall in the upper third of the historical range.
		Below-average rainfall Weekly total rainfall in the lower third of the historical range.
		Above-normal temperatures 7-day mean temperatures in the upper third of the historical range.
		Below-normal temperatures 7-day mean temperatures in the lower third of the historical range.

Product is updated once per week, except from 6/1 - 11/30 for the region from 120E to 0, 0 to 40N. The product targets broad scale conditions integrated over a 7-day period for US interests only. Consult your local responsible forecast agency.

