

# Global Tropics Hazards And Benefits Outlook

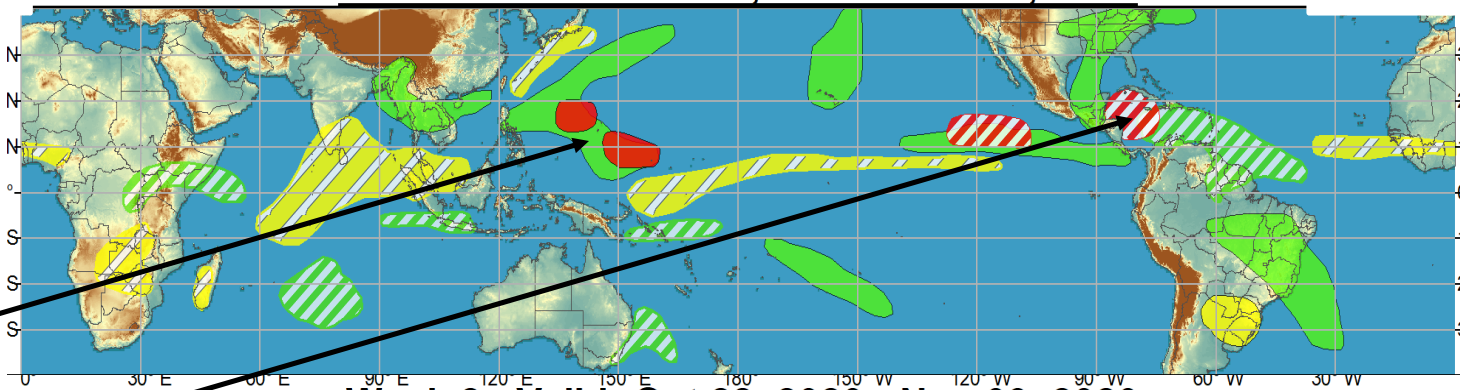
11/3/2020

Kyle MacRitchie

## Outline

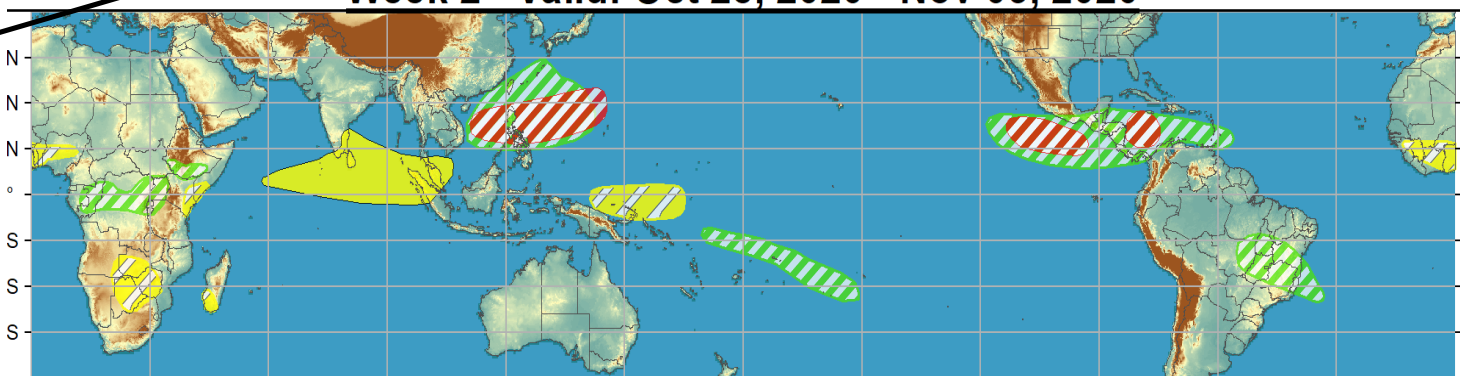
1. Review of Recent Conditions
2. Synopsis of Climate Modes
3. GTH Outlook and Forecast Discussion
4. Connections to U.S. Impacts

**Week 1 - Valid: Oct 28, 2020 - Nov 03, 2020**



Goni – 10/28  
Atsani – 11/2

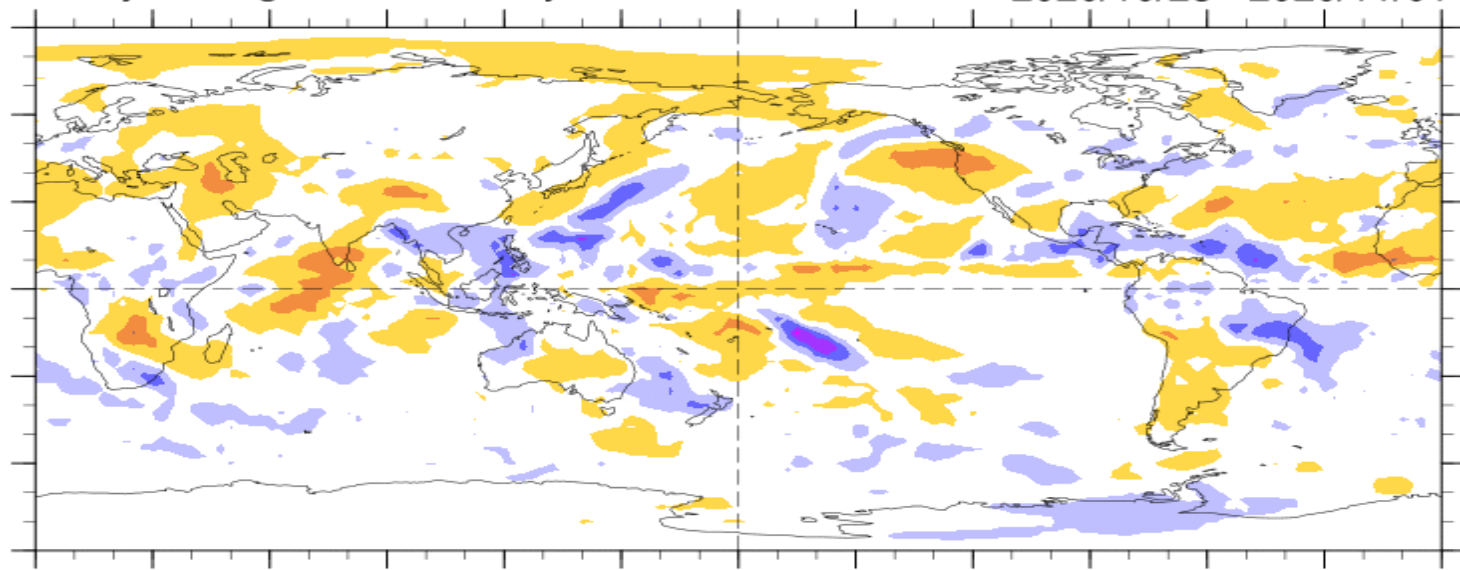
**Week 2 - Valid: Oct 28, 2020 - Nov 03, 2020**



Eta – 10/31

7-Day Average OLR Anomaly

2020/10/26 - 2020/11/01



# Outlook Review

Cool shading  
More clouds/rain

Warm shading  
Less clouds/rain

# Synopsis of Climate Modes

**ENSO: (8 October, 2020 Update)**

*next update on 12<sup>th</sup> of Nov.!*

- ENSO Alert System Status: [La Niña Advisory](#)
- La Niña is likely to continue through the Northern Hemisphere winter 2020-21 (~85% chance) and into spring 2021 (~60% chance during February-April).

## **MJO and other subseasonal tropical variability:**

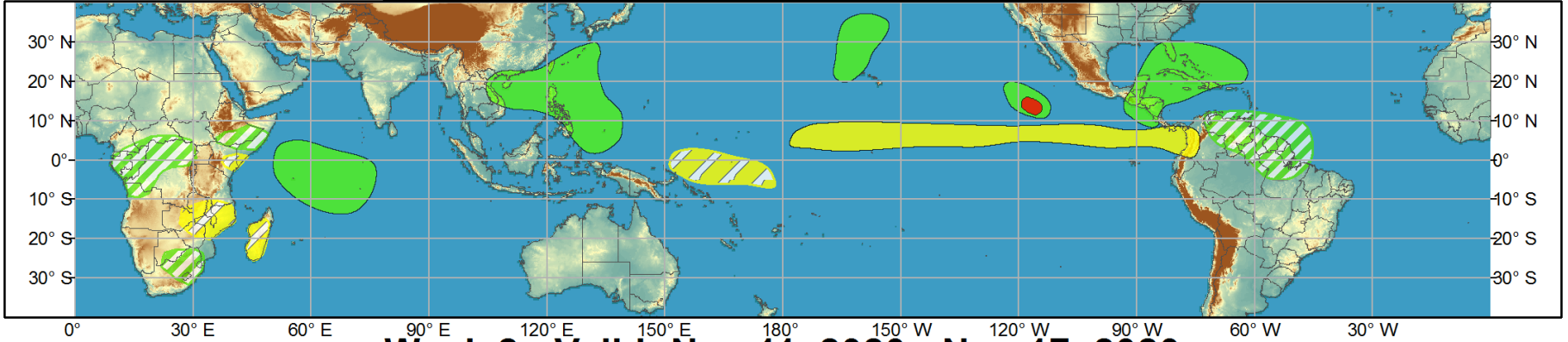
- The RMM index places the active phase of the MJO over the Pacific.
- Most models forecast the MJO to weaken as it propagates over the cold La Nina waters of the Central and East Pacific.
- A Kelvin wave will likely aid (re)development of the MJO over the Indian Ocean during Week-2. The CFS is especially bullish about this event, but the ECMWF is not.



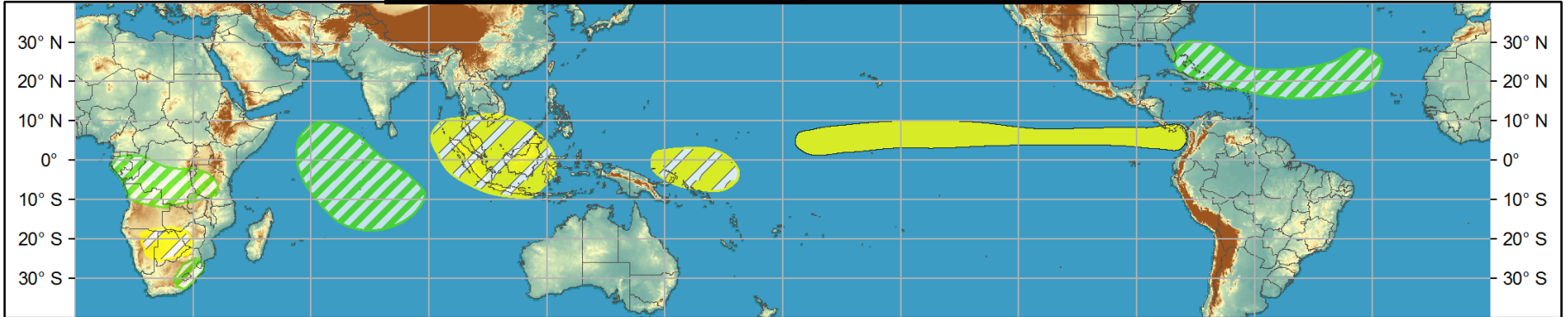
# Global Tropics Hazards and Benefits Outlook - Climate Prediction Center



## Week 1 - Valid: Nov 04, 2020 - Nov 10, 2020



## Week 2 - Valid: Nov 11, 2020 - Nov 17, 2020



**Confidence**  
High Moderate

- Tropical Cyclone Formation** Development of a tropical cyclone (tropical depression - TD, or greater strength).
- Above-average rainfall** Weekly total rainfall in the upper third of the historical range.
- Below-average rainfall** Weekly total rainfall in the lower third of the historical range.
- Above-normal temperatures** 7-day mean temperatures in the upper third of the historical range.
- Below-normal temperatures** 7-day mean temperatures in the lower third of the historical range.

Produced: 11/03/2020

Forecaster: MacRitchie

**Product is updated once per week, except from 6/1 - 11/30 for the region from 120E to 0, 0 to 40N. The product targets broad scale conditions integrated over a 7-day period for US interests only. Consult your local responsible forecast agency.**





# IR Satellite & 200-hpa Velocity Potential Anomalies

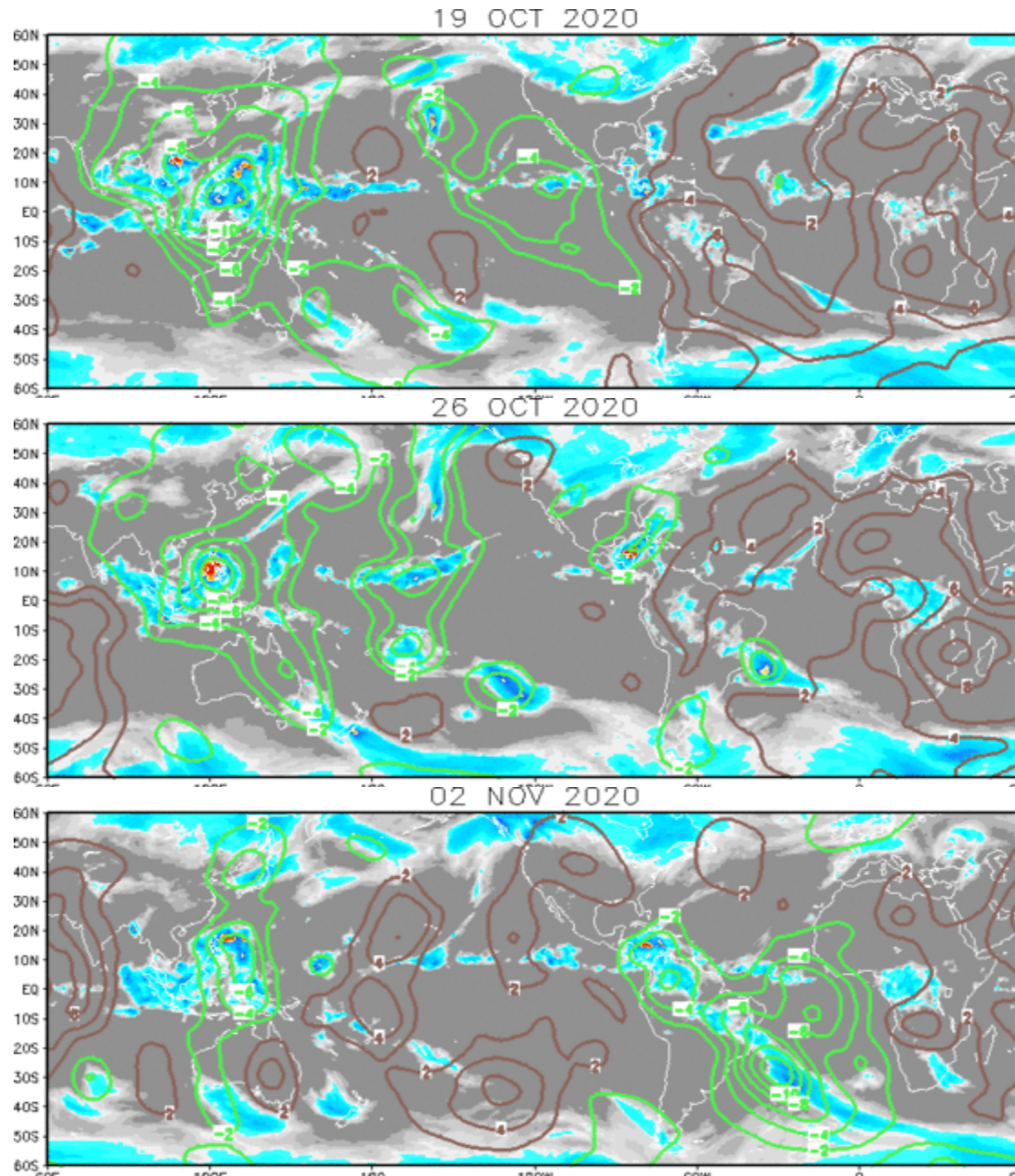
Green: Enhanced Divergence

Brown: Enhanced Convergence

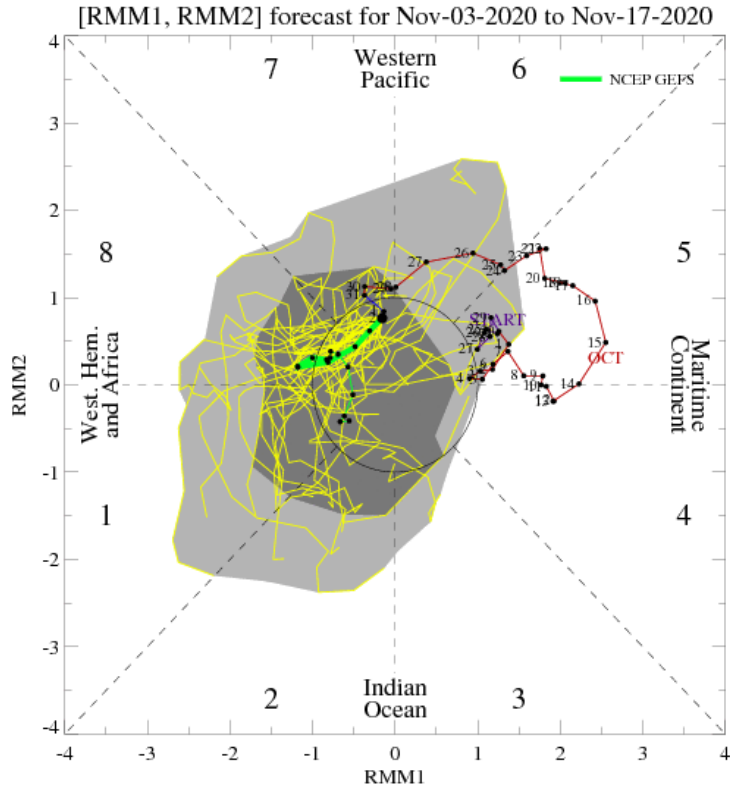
Enhanced convection over the Maritime Continent is related to both the active MJO and La Nina patterns.

Typhoon activity has ramped up within the broad area of enhanced convection in the WPAC.

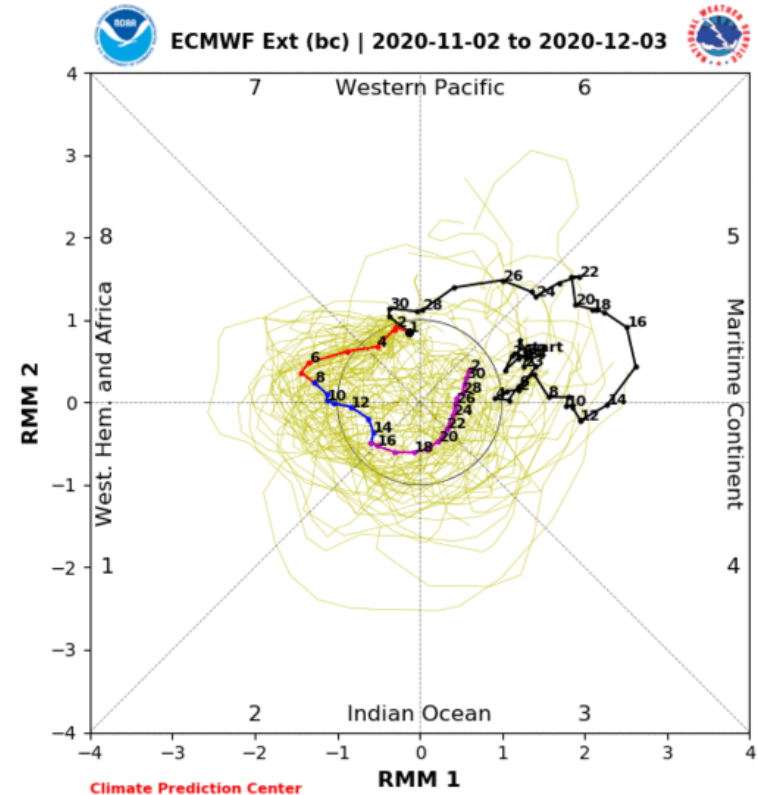
Convection over the WPAC is slightly weaker as the MJO moves eastward.



# MJO Observation/Forecast



GEFS

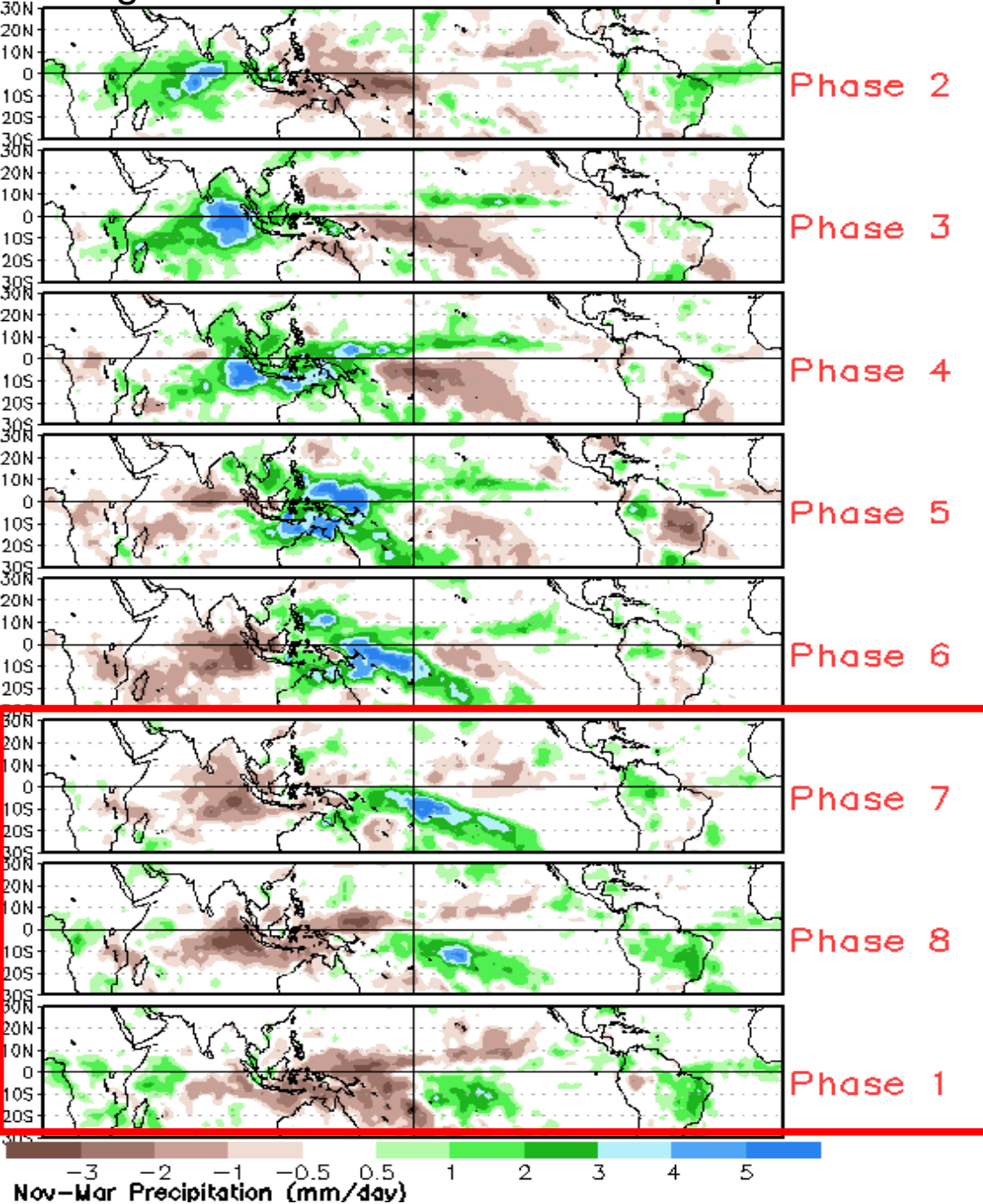


ECMWF ext

Both models predict the MJO to weaken as it moves eastward.

Though neither model's ensemble mean suggests a strong MJO in Week-2, several ensemble members do.

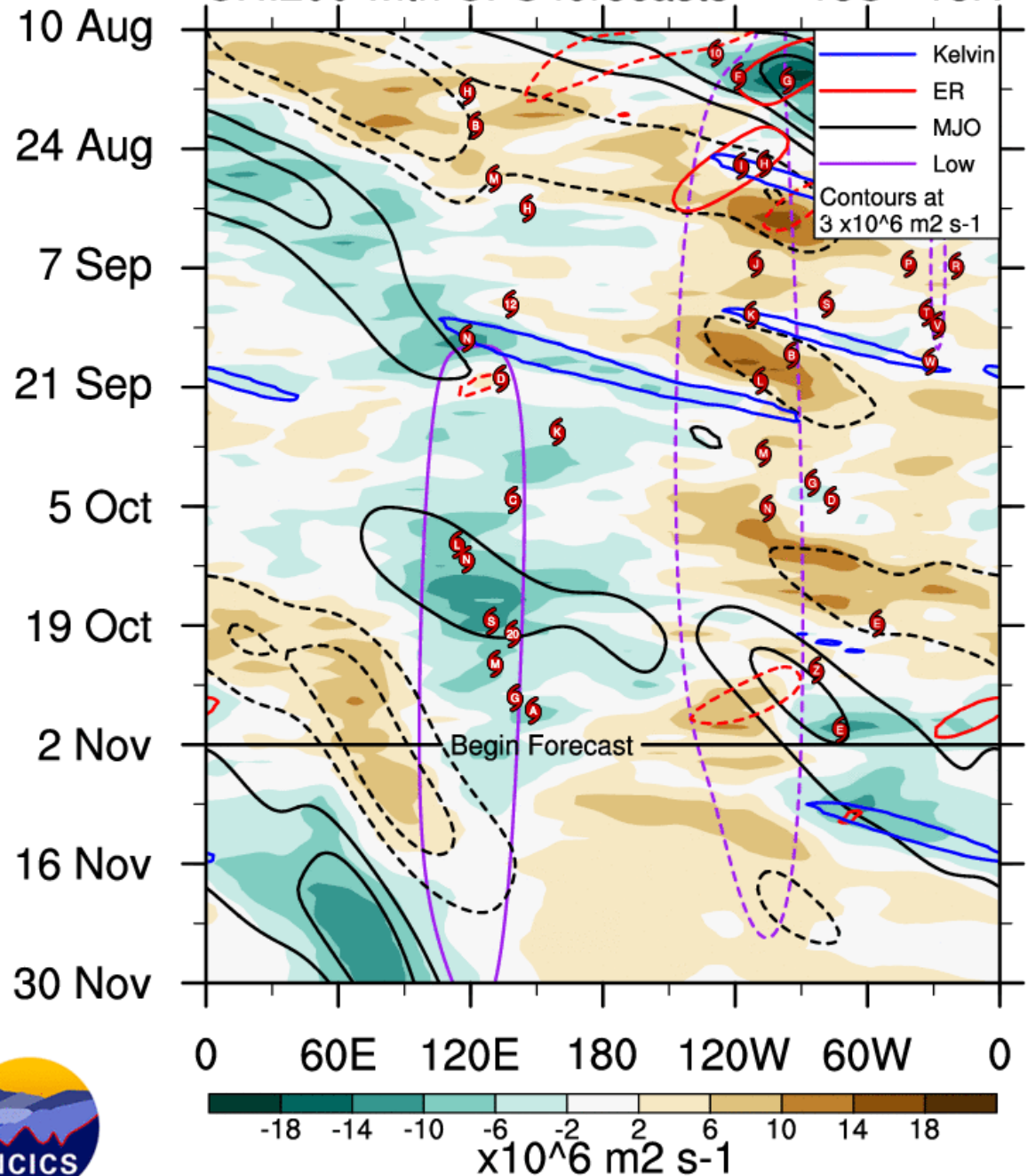
# Average Conditions when the MJO is present



CAVEAT: These panels are representative of robust MJO events.



# CHI200 with CFS forecasts 15S - 15N



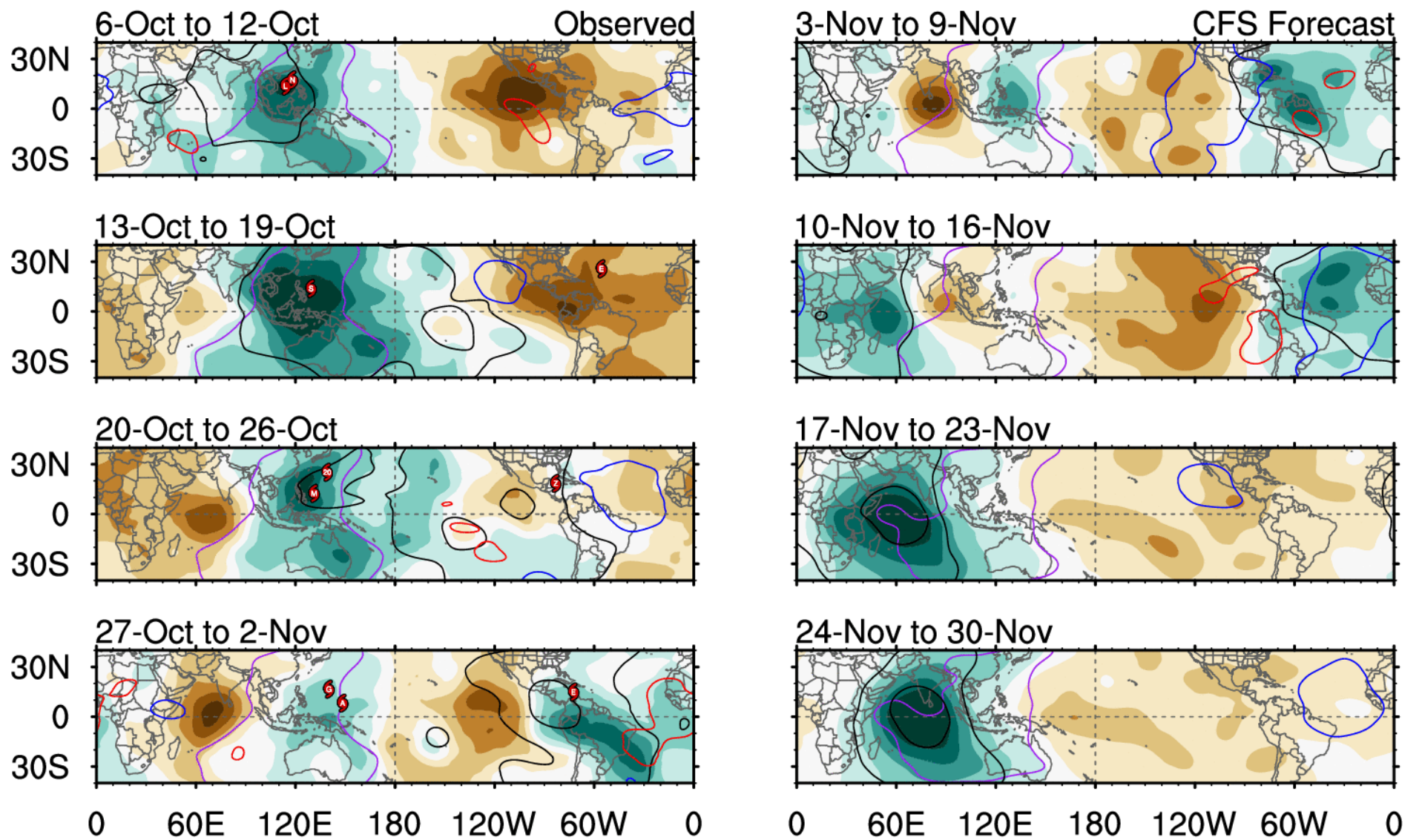
**MJO** is forecast to weaken as it moves eastward.

**Kelvin wave** is forecast to assist with MJO development in Week-2.

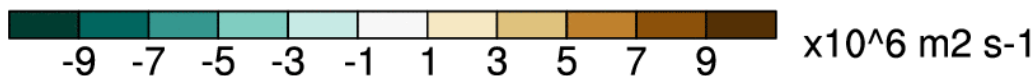
**Low frequency** contours depict ENSO cold conditions.







# 7-day CHI200 with CFS forecasts

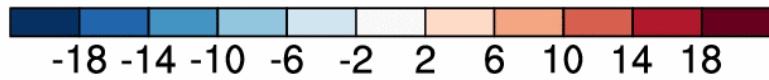
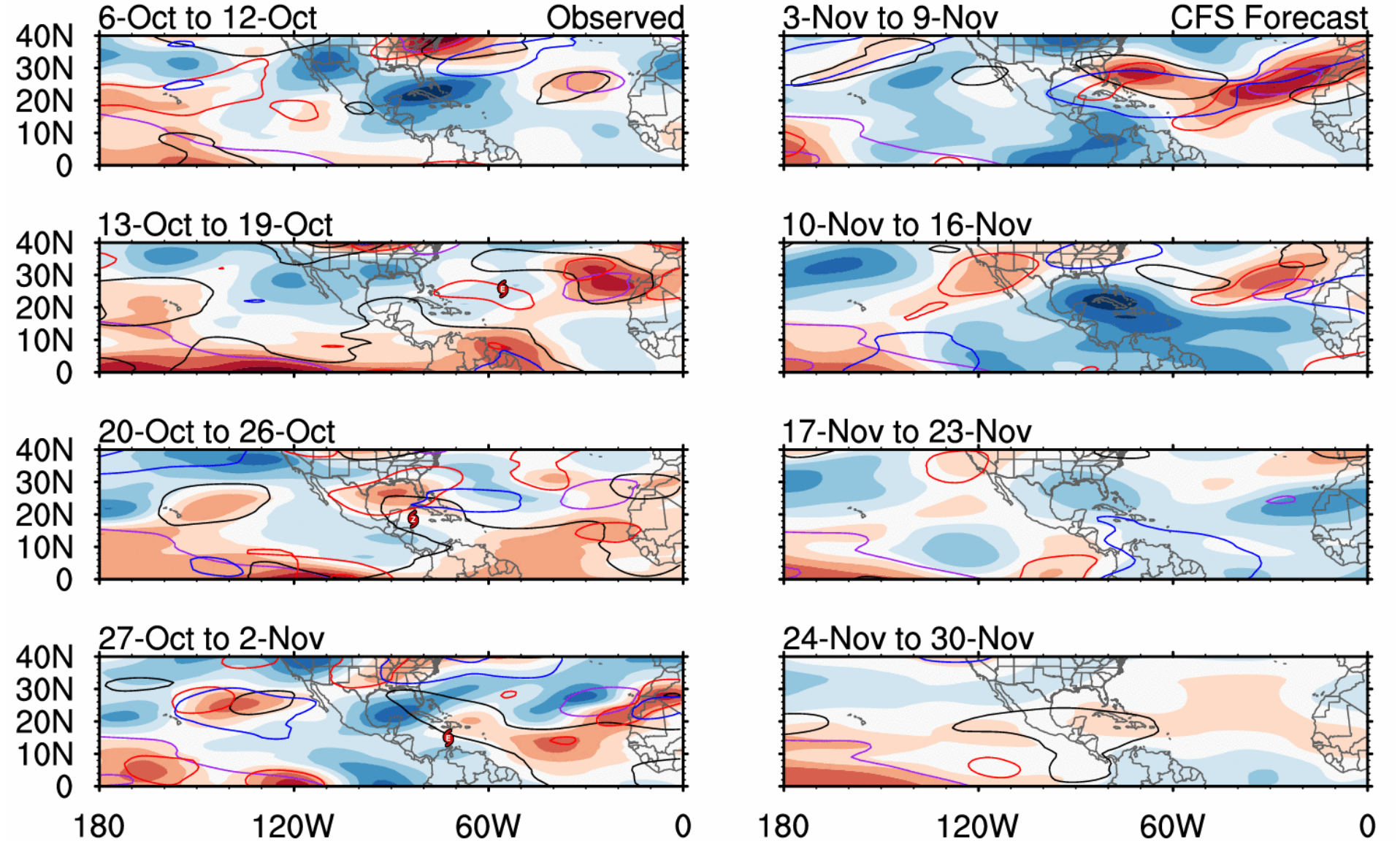


- MJO
- Low
- Kelvin x2
- ER

Contours at  $-2, -6 \times 10^6 \text{ m}^2 \text{ s}^{-1}$

Carl Schreck

carl\_schreck@ncsu.edu



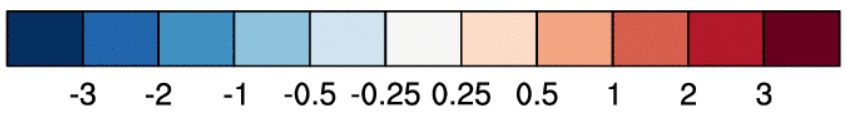
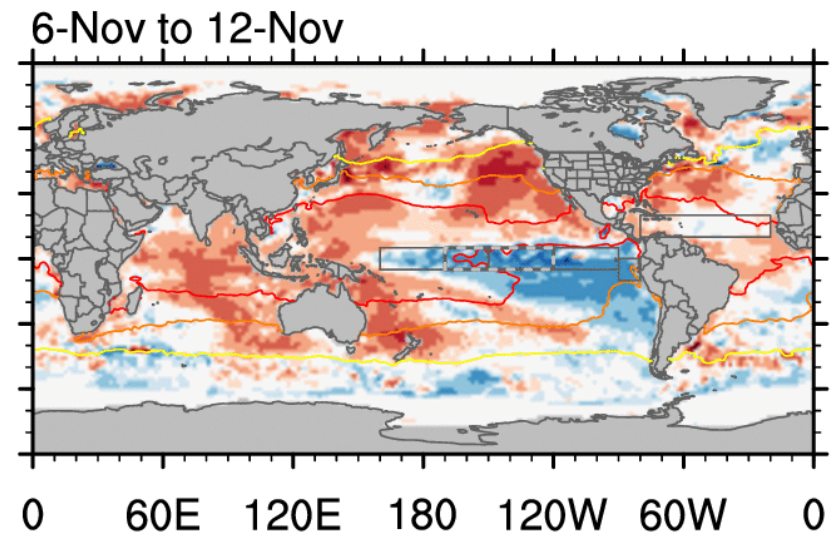
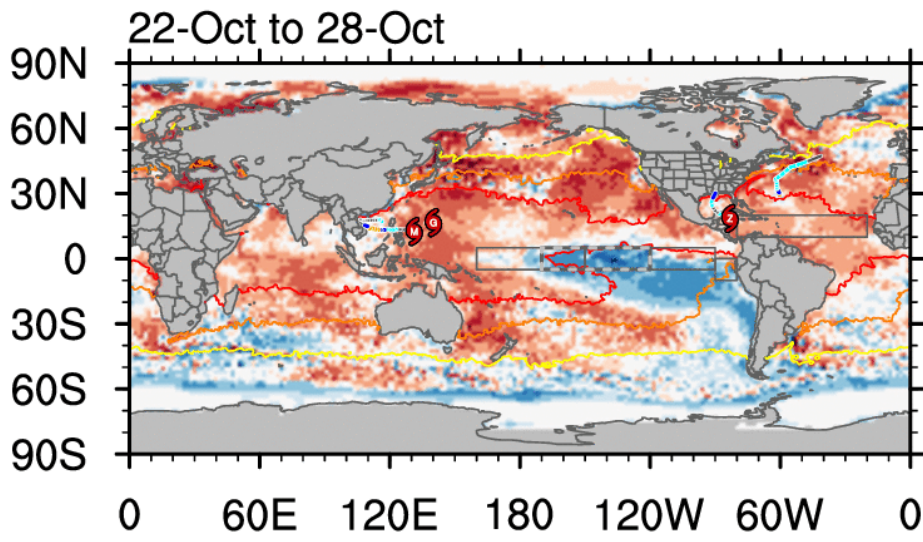
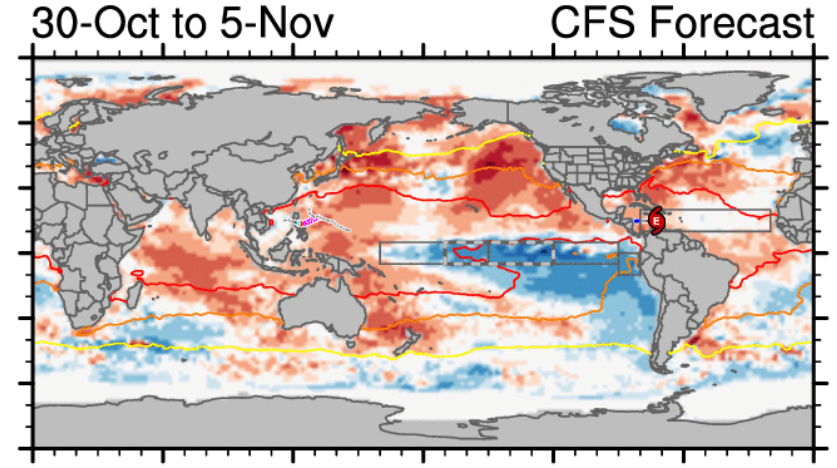
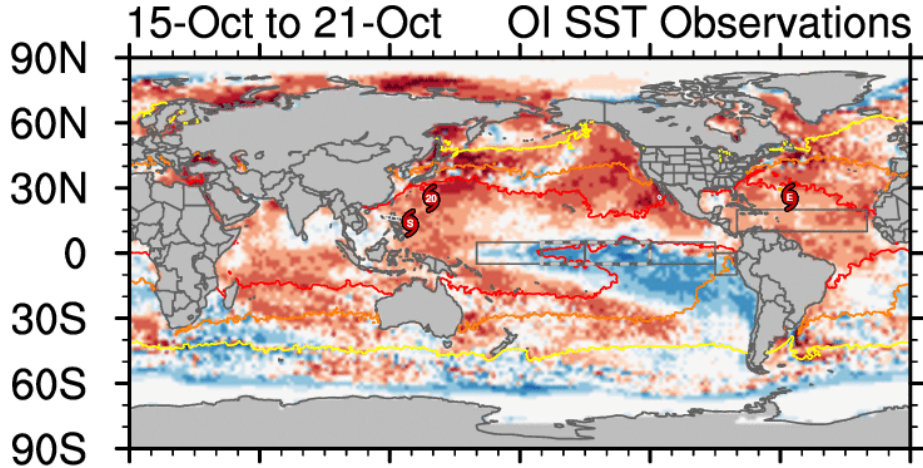
m/s

— MJO      — Kelvin x2  
— Low      — ER

Contours at 4, 12 m/s

# 7-day USHEAR with CFS forecasts

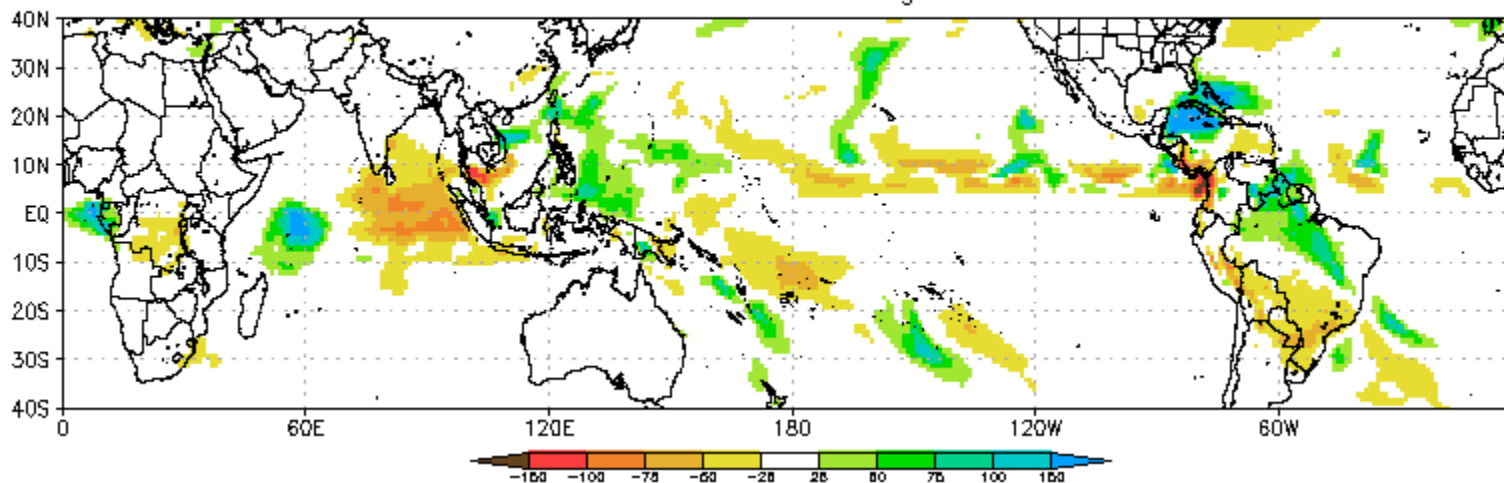




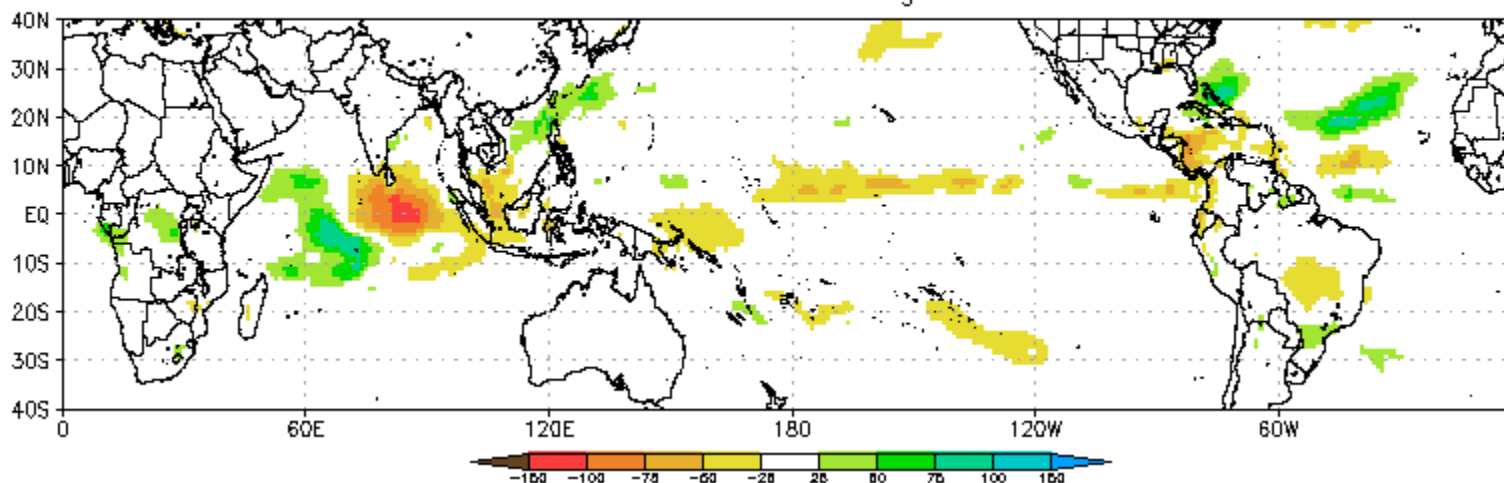
7-day ANOM



CFS Precipitation Anomalies (mm) Issued 02Nov2020  
Week-1 Forecast Ending 10Nov2020



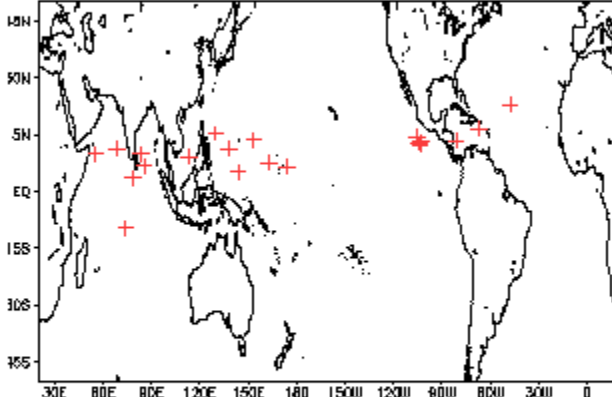
CFS Precipitation Anomalies (mm) Issued 02Nov2020  
Week-2 Forecast Ending 17Nov2020



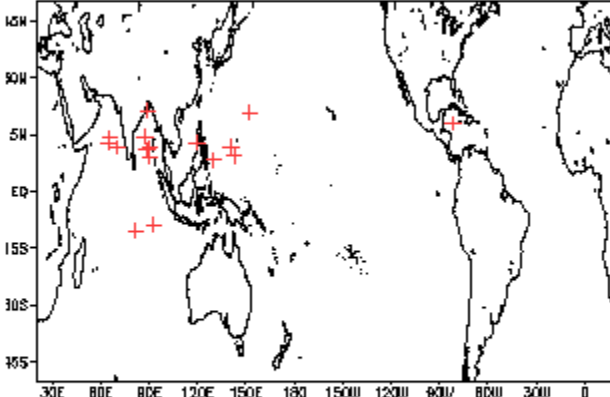


# November Tropical Storm Formation by MJO phase

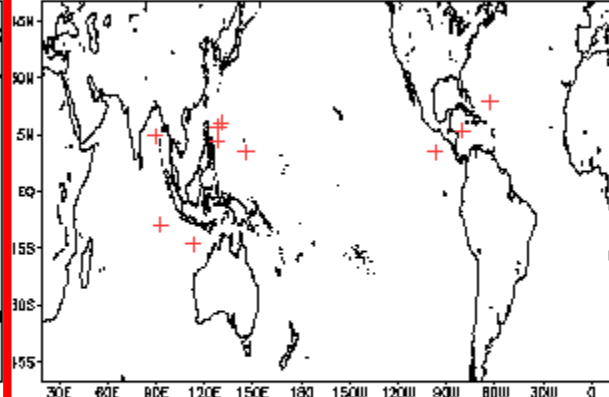
Phase 1 (65 days) 21 storms



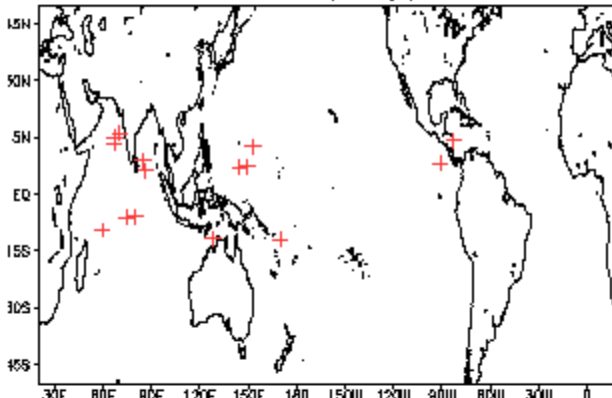
Phase 4 (77 days) 17 storms



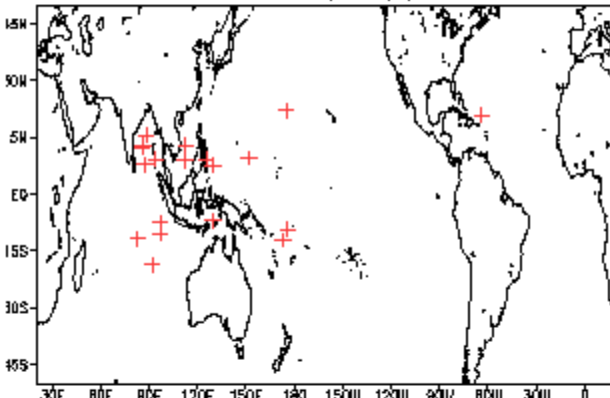
Phase 7 (68 days) 11 storms



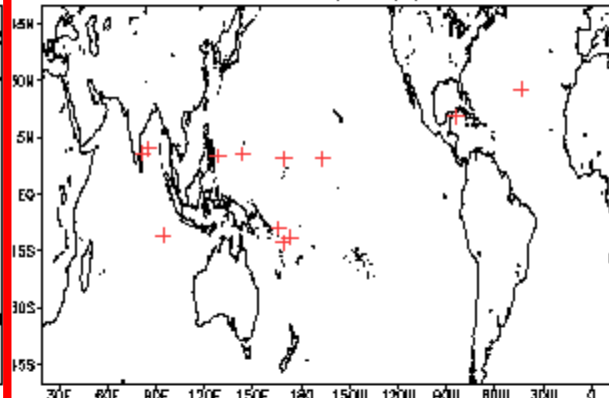
Phase 2 (82 days) 15 storms



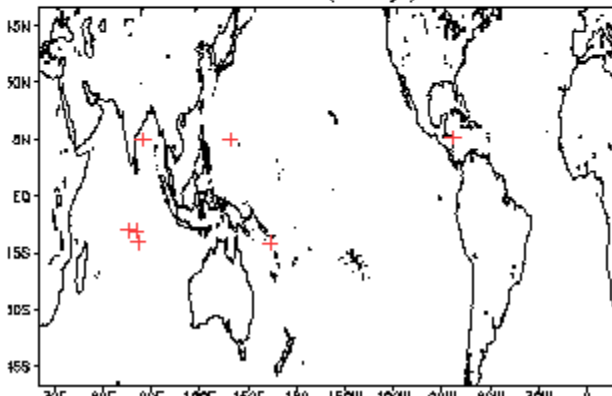
Phase 5 (72 days) 20 storms



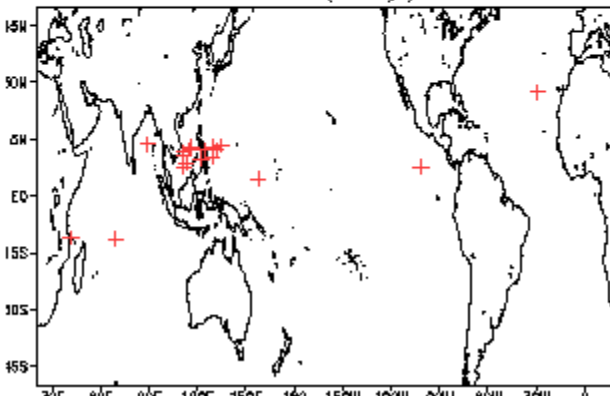
Phase 8 (60 days) 14 storms



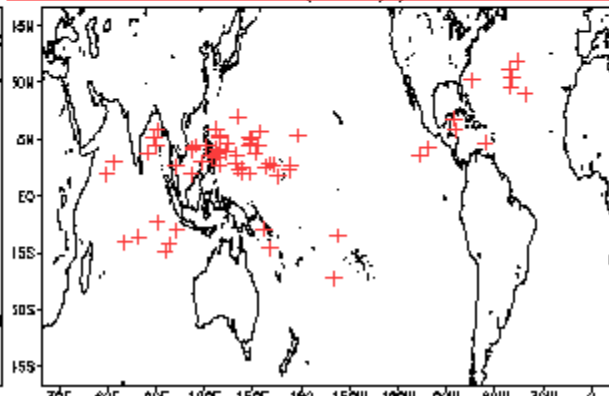
Phase 3 (89 days) 8 storms



Phase 6 (91 days) 19 storms



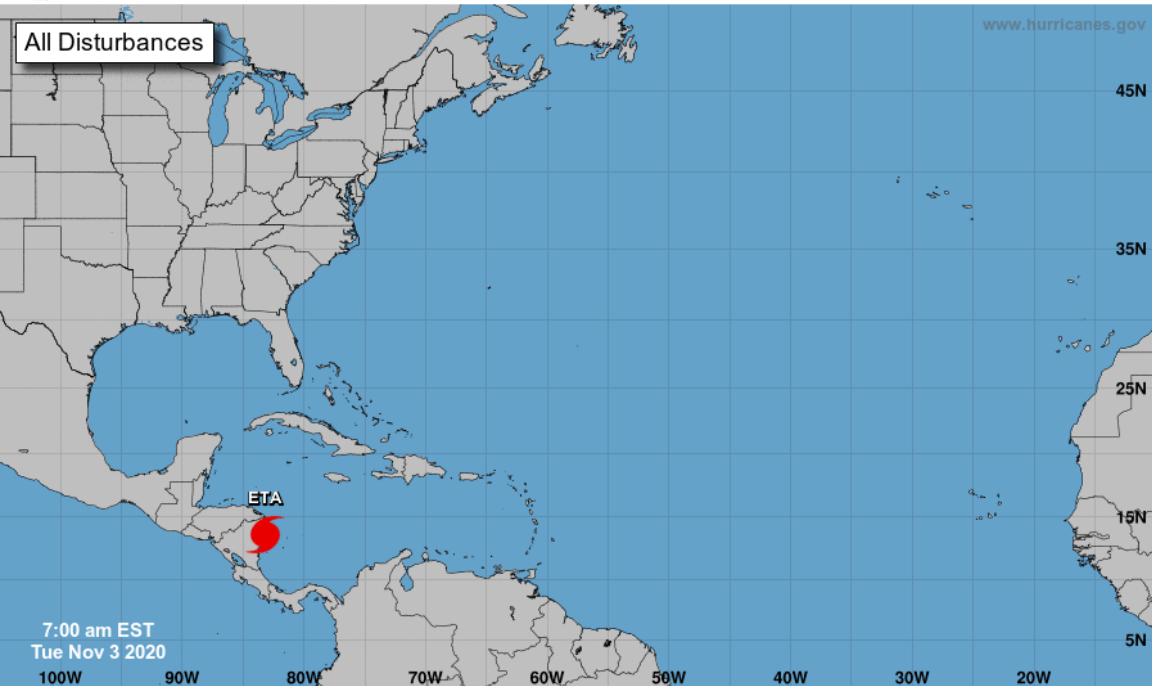
Null (390 days) 65 storms





# Five-Day Graphical Tropical Weather Outlook

National Hurricane Center Miami, Florida



7:00 am EST  
Tue Nov 3 2020

100W 90W 80W 70W 60W 50W 40W 30W 20W

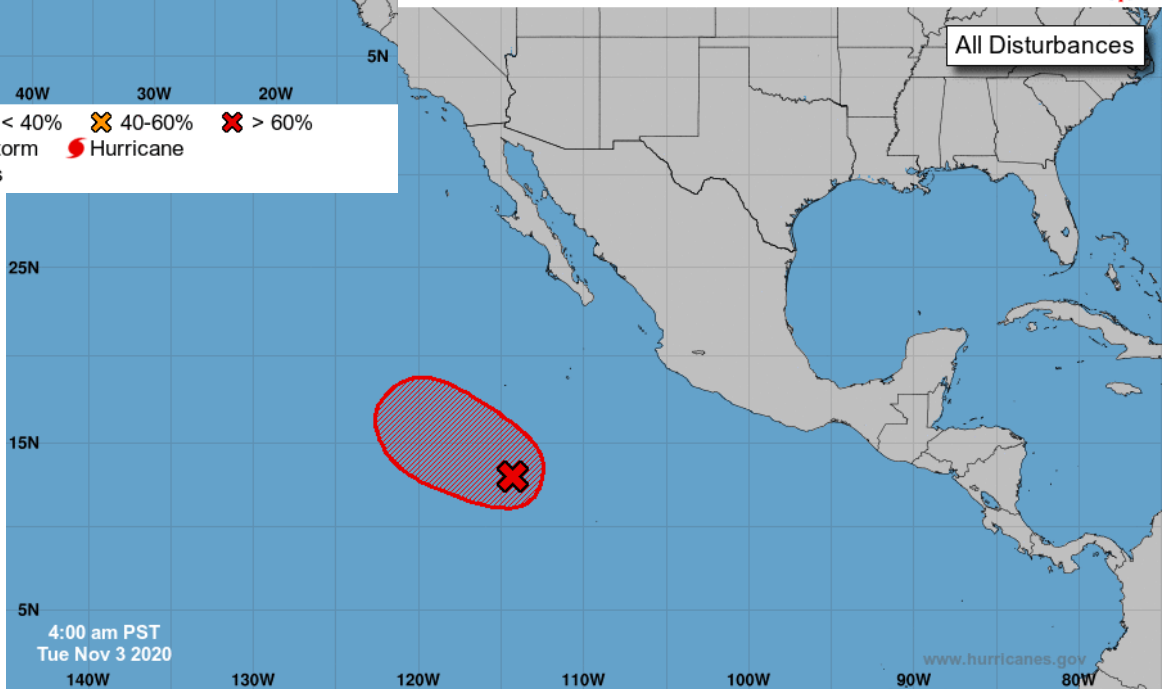
Current Disturbances and Five-Day Cyclone Formation Chance: < 40% 40-60% > 60%

Tropical or Sub-Tropical Cyclone: Depression Storm Hurricane

Post-Tropical Cyclone or Remnants

# Graphical Tropical Weather Outlook

National Hurricane Center Miami, Florida



All Disturbances

4:00 am PST  
Tue Nov 3 2020

140W 130W 120W 110W 100W 90W 80W

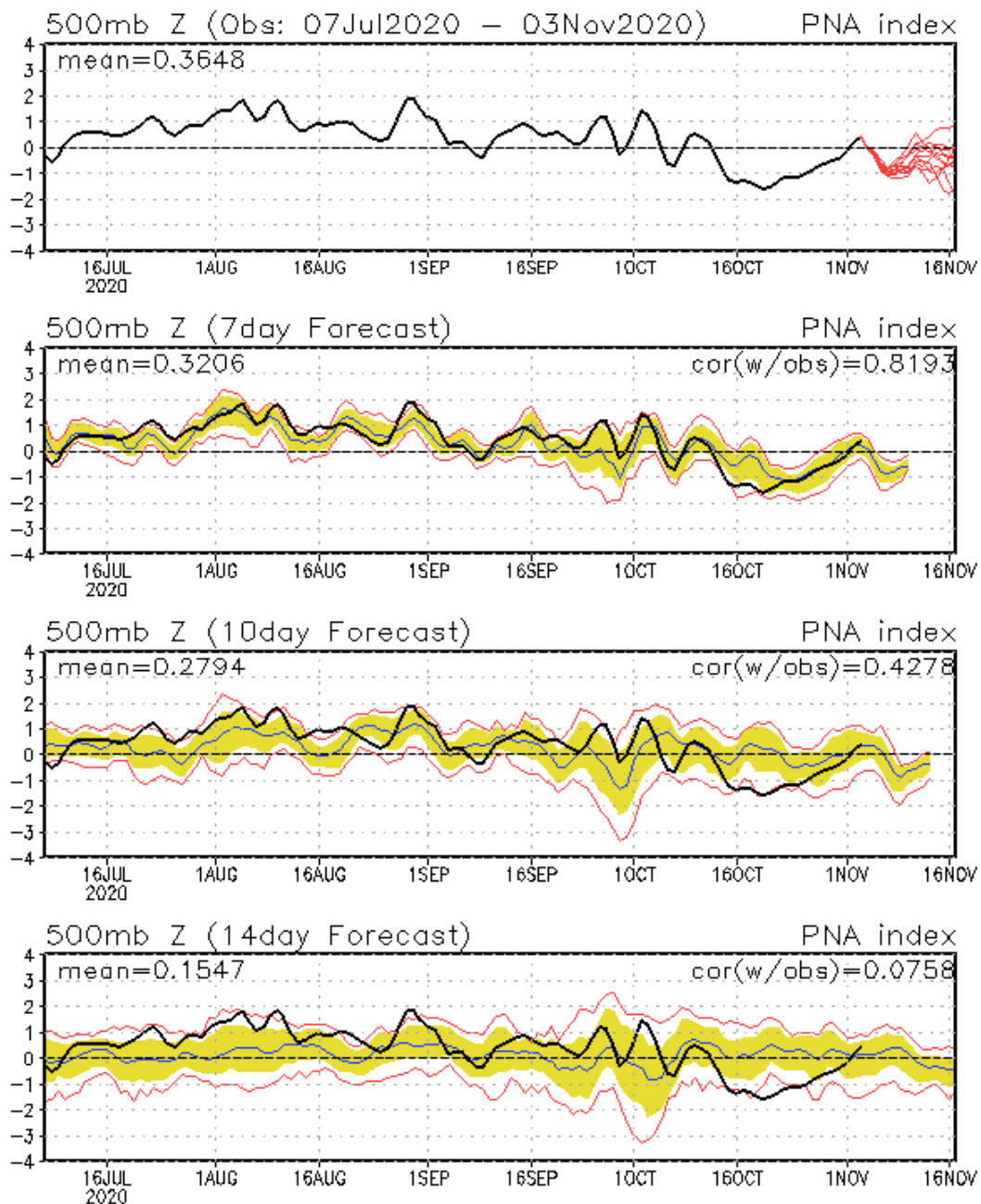
Current Disturbances and Five-Day Cyclone Formation Chance: < 40% 40-60% > 60%

Tropical or Sub-Tropical Cyclone: Depression Storm Hurricane

Post-Tropical Cyclone or Remnants

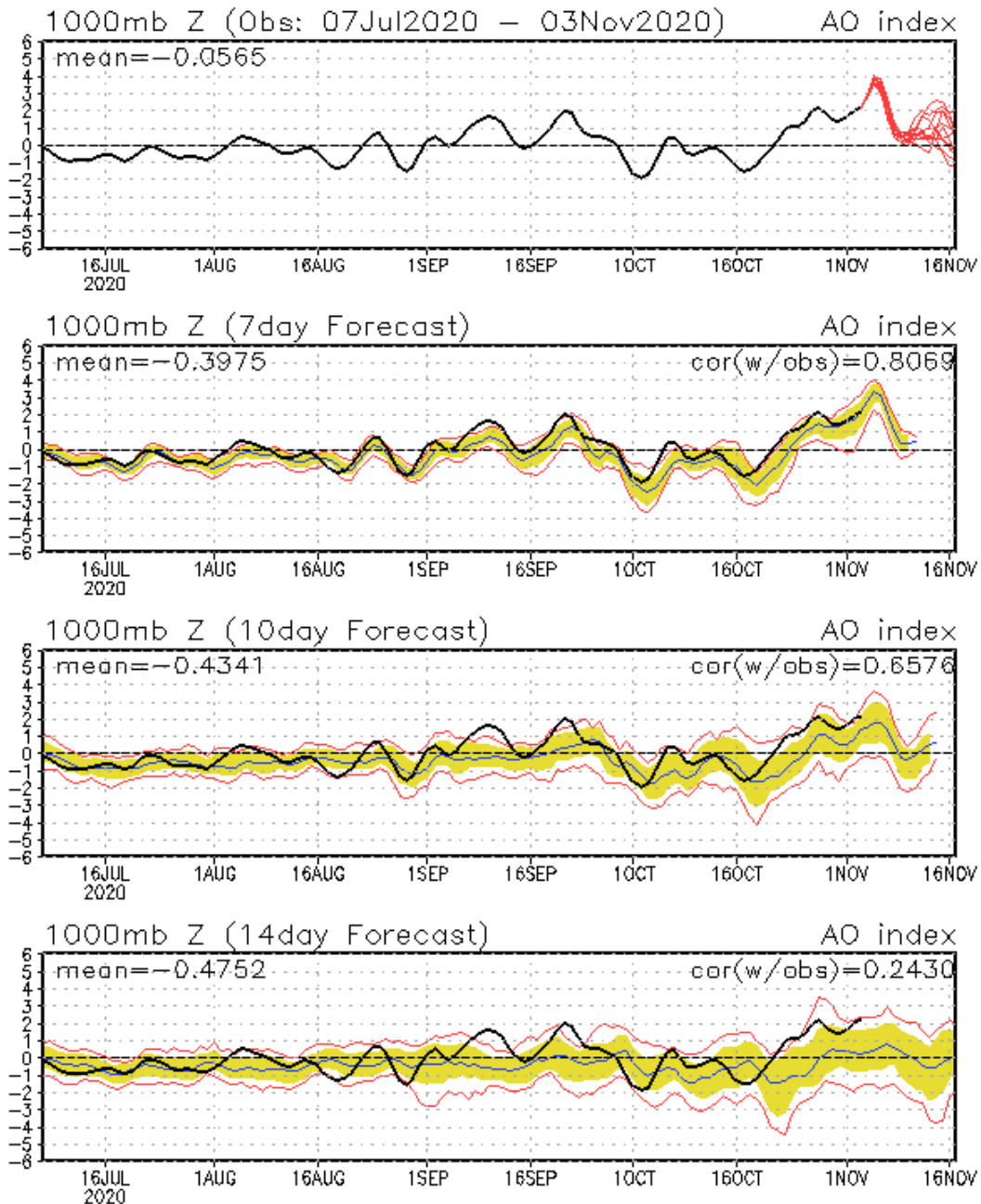
# Connections to U.S. Impacts

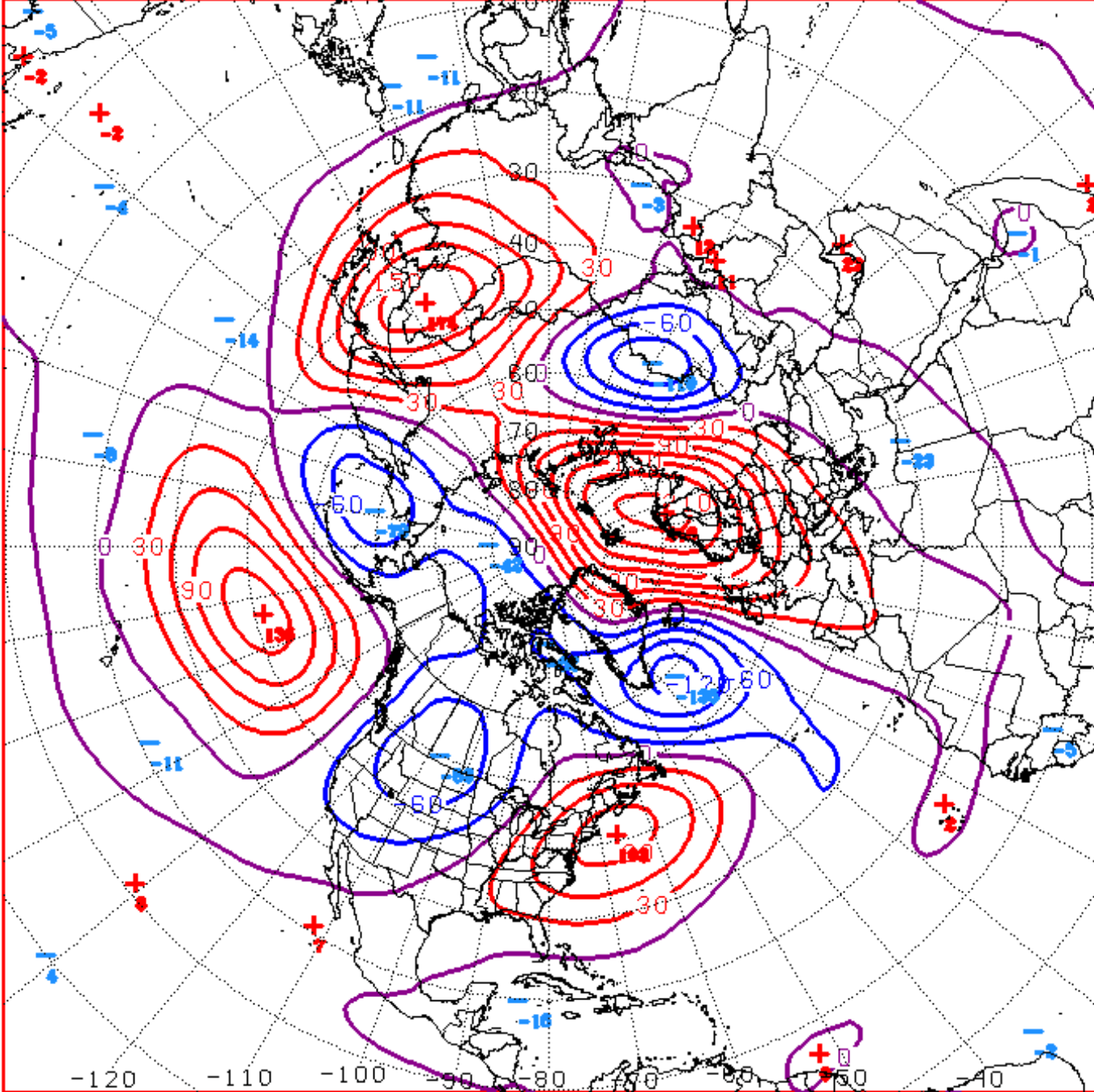
## PNA: Observed & ENSM forecasts





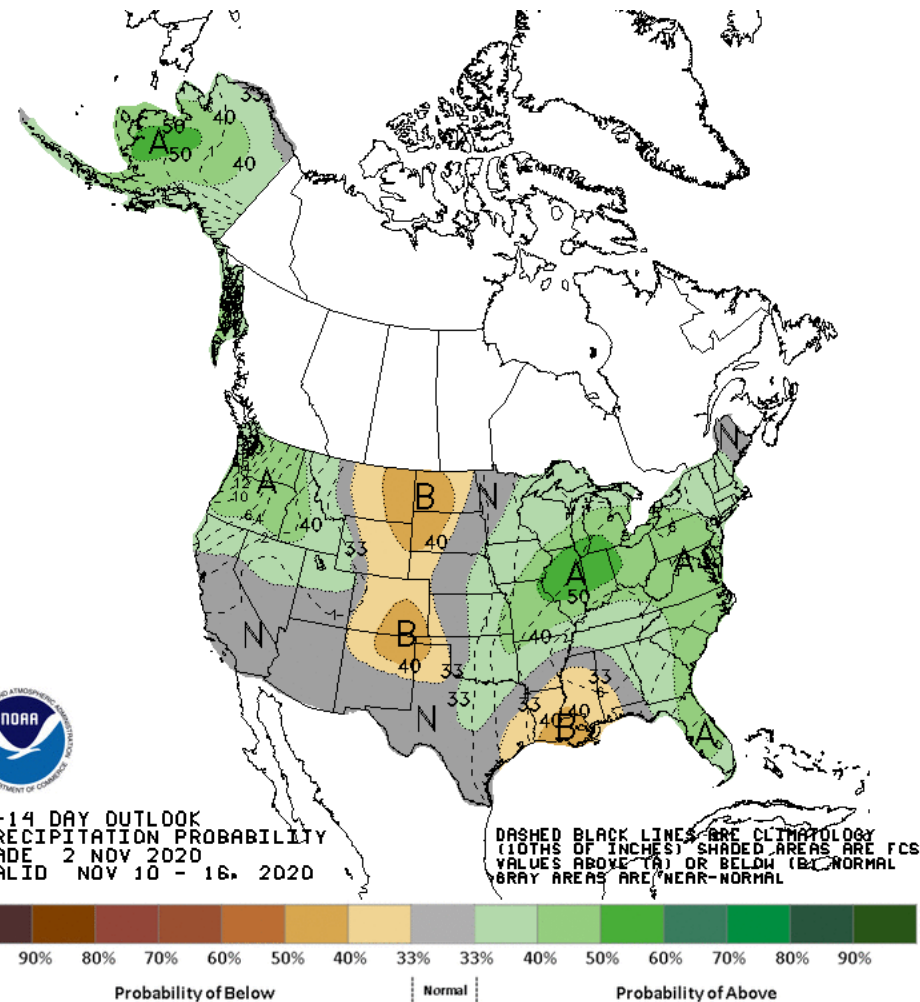
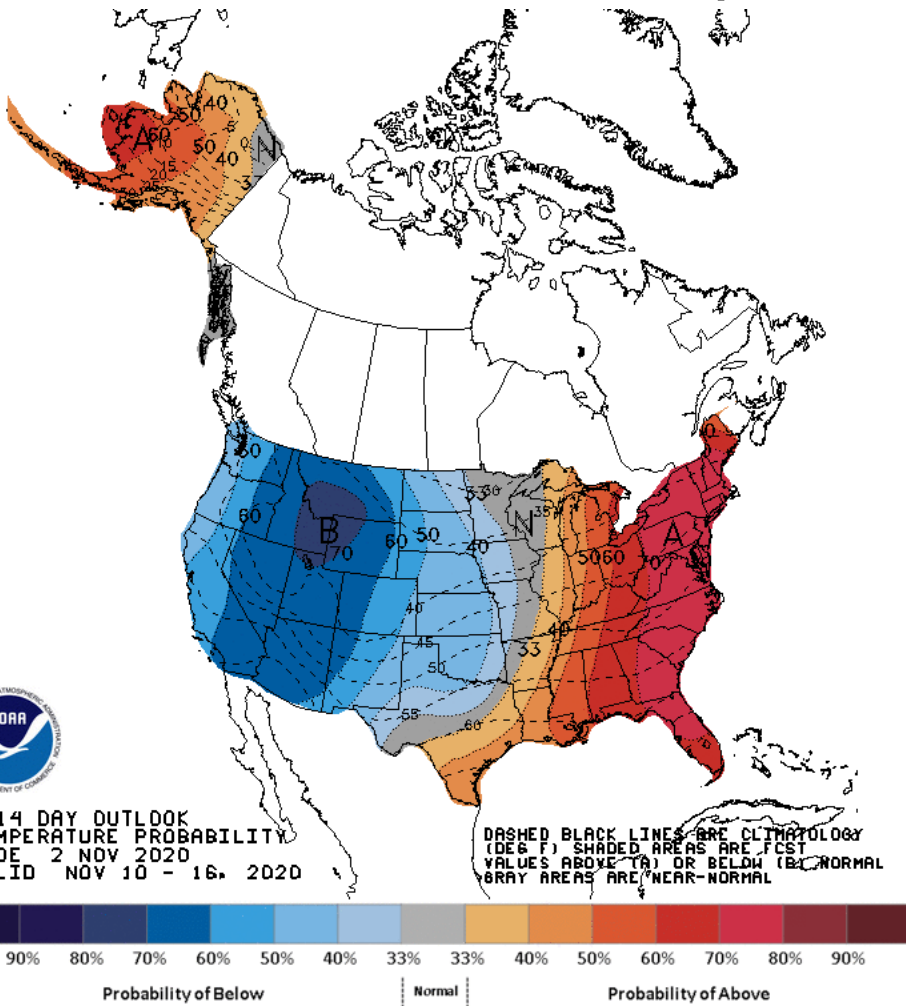
# AO: Observed & ENSM forecasts





D+11 500 MB ANOMALIES FROM ALZ ENSM  
 CPC MAP MADE NOV 03 2020 1420 UTC CNTD NOV 14 2020

# Week 2 – Temperature and Precipitation



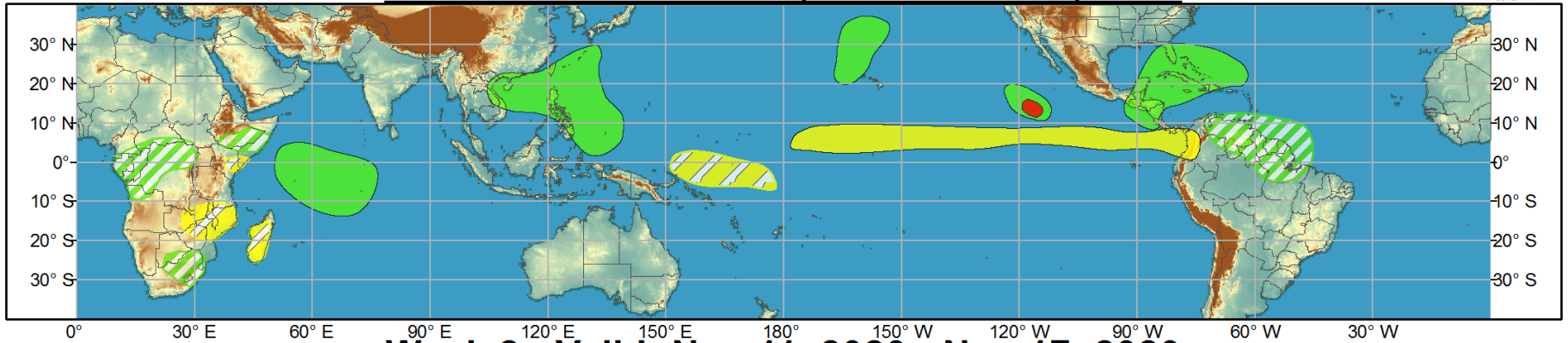
Since we are in an amplified, stable pattern today's outlooks are likely to be similar.



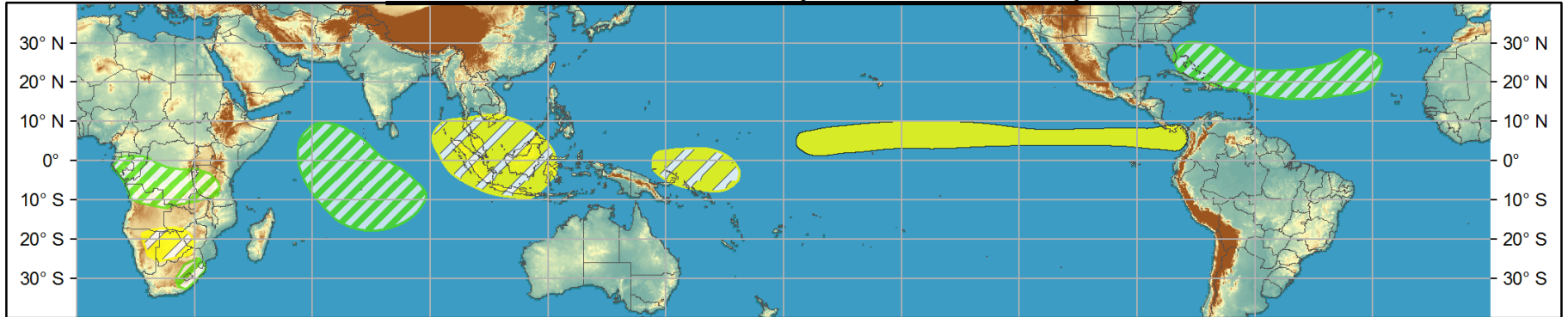
# Global Tropics Hazards and Benefits Outlook - Climate Prediction Center



## Week 1 - Valid: Nov 04, 2020 - Nov 10, 2020



## Week 2 - Valid: Nov 11, 2020 - Nov 17, 2020



**Confidence**  
 High Moderate

- Tropical Cyclone Formation** Development of a tropical cyclone (tropical depression - TD, or greater strength).
- Above-average rainfall** Weekly total rainfall in the upper third of the historical range.
- Below-average rainfall** Weekly total rainfall in the lower third of the historical range.
- Above-normal temperatures** 7-day mean temperatures in the upper third of the historical range.
- Below-normal temperatures** 7-day mean temperatures in the lower third of the historical range.

Produced: 11/03/2020

Forecaster: MacRitchie

Product is updated once per week, except from 6/1 - 11/30 for the region from 120E to 0, 0 to 40N. The product targets broad scale conditions integrated over a 7-day period for US interests only. Consult your local responsible forecast agency.

