

Global Tropics Hazards And Benefits Outlook

3/8/2022

Brad Pugh

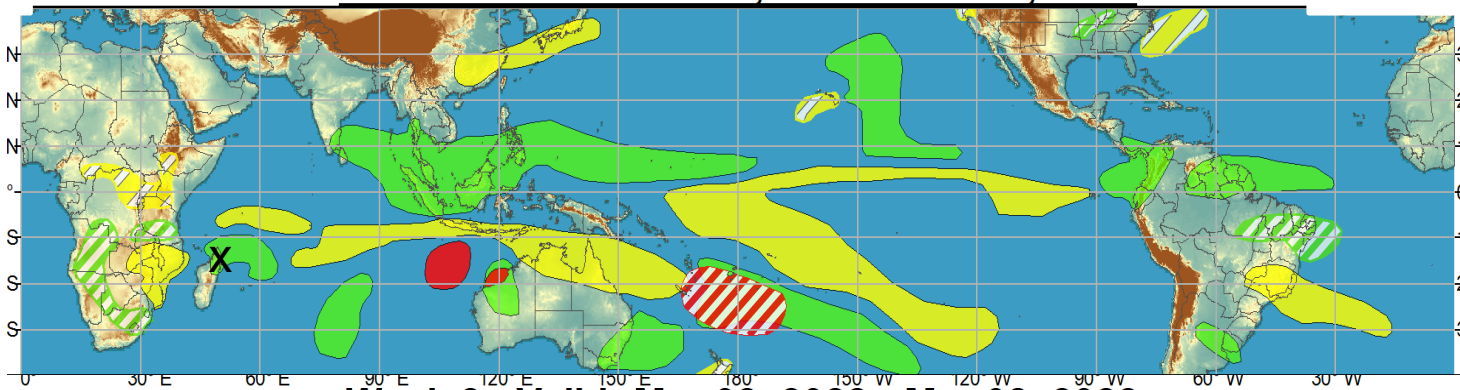
Outline

1. Review of Recent Conditions
2. Synopsis of Climate Modes
3. GTH Outlook and Forecast Discussion
4. Connections to U.S. Impacts

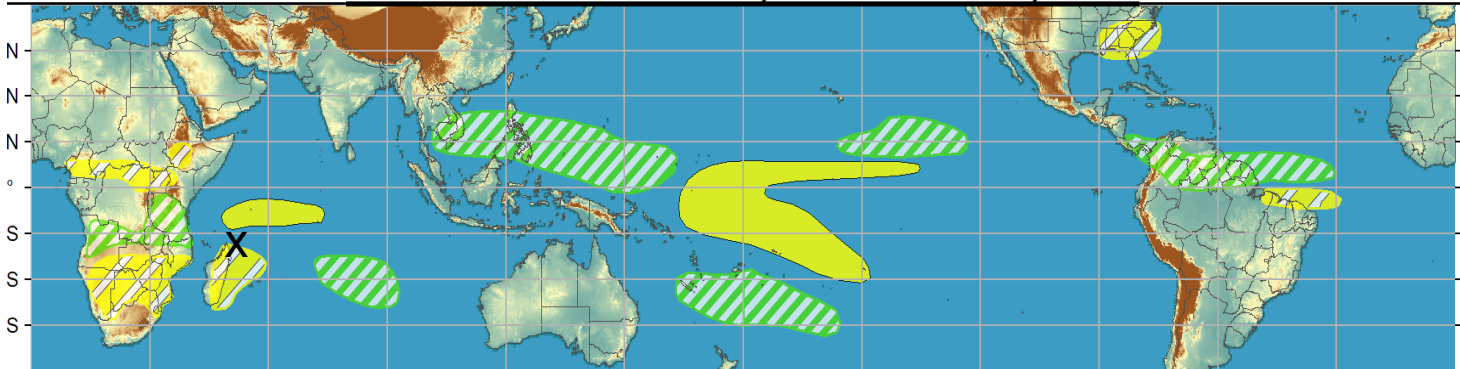
Outlook Review

X= Tropical Cyclone
Gombe

Week 1 - Valid: Mar 02, 2022 - Mar 08, 2022

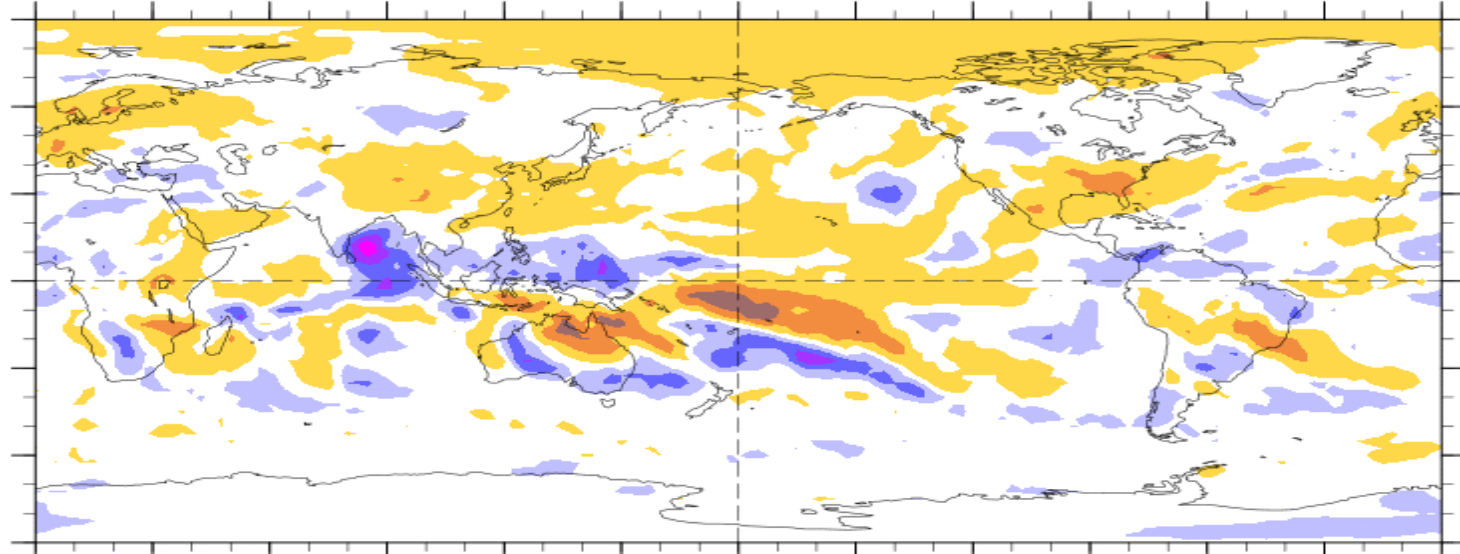


Week 2 - Valid: Mar 02, 2022 - Mar 08, 2022



7-Day Average OLR Anomaly

2022/02/28 - 2022/03/06

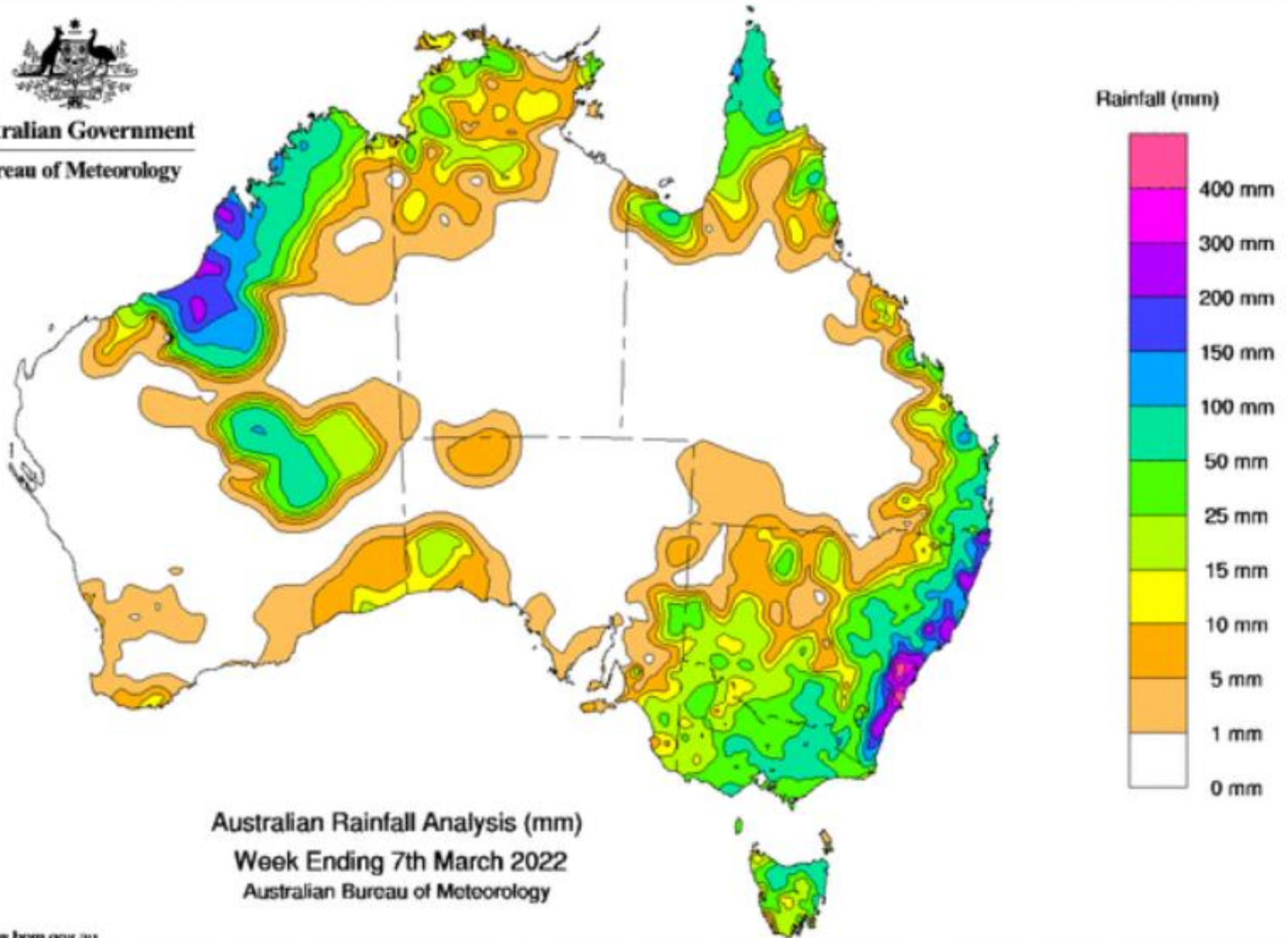


Cool shading
More clouds/rain

Warm shading
Less clouds/rain



Australian Government
Bureau of Meteorology



<http://www.bom.gov.au>

Synopsis of Climate Modes

ENSO: (February 10, 2022 Update)

next update on Thursday, March 10th

- ENSO Alert System Status: [La Niña Advisory](#)
- La Niña is likely to continue into the Northern Hemisphere spring (77% chance during March-May 2022) and then transition to ENSO-neutral (56% chance during May-July 2022)

MJO and other subseasonal tropical variability:

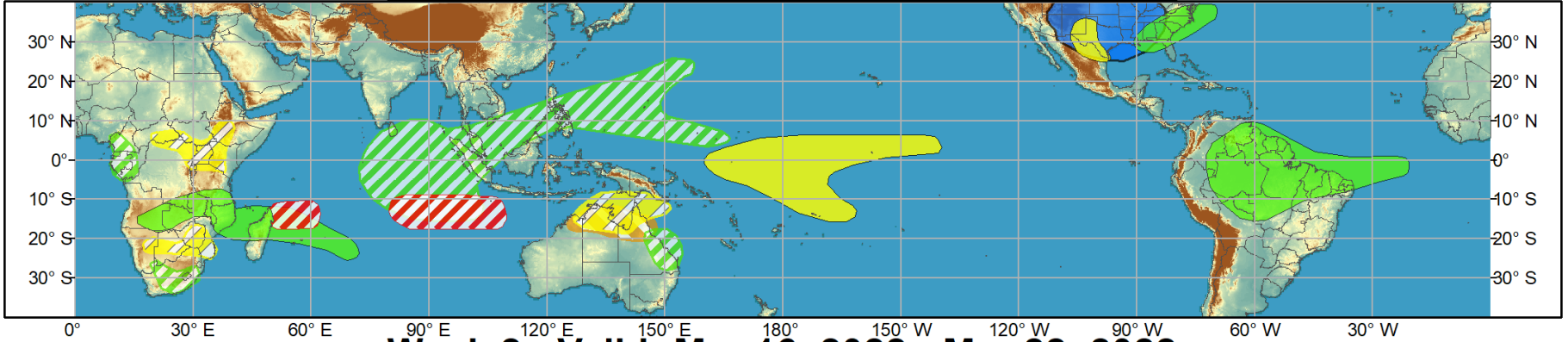
- The MJO recently weakened as its enhanced phase crossed the central Pacific where the well-established La Niña continues to suppress rainfall.
- La Niña is likely to remain the major contributor to anomalous rainfall throughout the global tropics into late March.



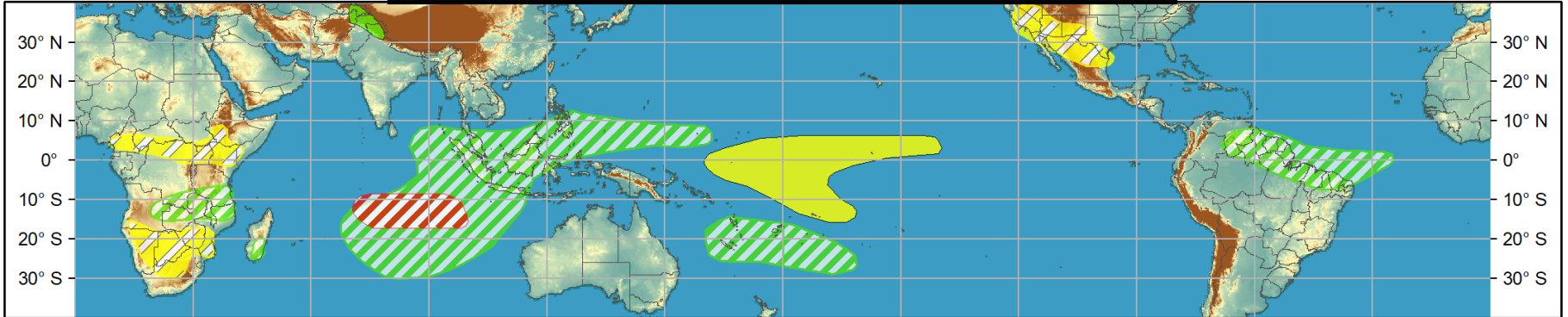
Global Tropics Hazards and Benefits Outlook - Climate Prediction Center



Week 1 - Valid: Mar 09, 2022 - Mar 15, 2022



Week 2 - Valid: Mar 16, 2022 - Mar 22, 2022



Confidence
High Moderate

- Tropical Cyclone Formation** Development of a tropical cyclone (tropical depression - TD, or greater strength).
- Above-average rainfall** Weekly total rainfall in the upper third of the historical range.
- Below-average rainfall** Weekly total rainfall in the lower third of the historical range.
- Above-normal temperatures** 7-day mean temperatures in the upper third of the historical range.
- Below-normal temperatures** 7-day mean temperatures in the lower third of the historical range.

Produced: 03/08/2022
Forecaster: Pugh

Product is updated once per week, except from 6/1 - 11/30 for the region from 120E to 0, 0 to 40N. The product targets broad scale conditions integrated over a 7-day period for US interests only. Consult your local responsible forecast agency.



IR Satellite & 200-hpa Velocity Potential Anomalies

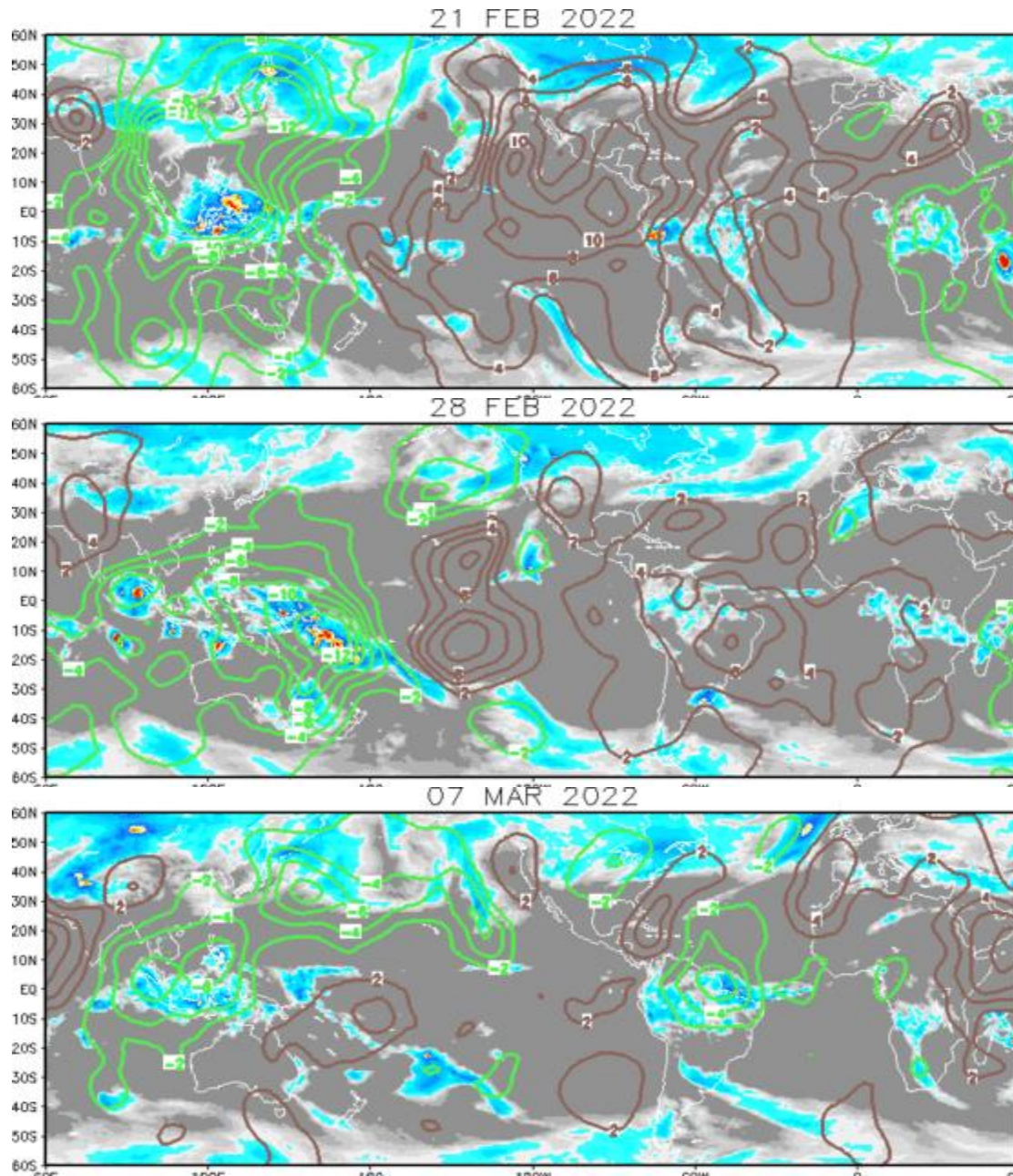
Green: Enhanced Divergence

Brown: Enhanced Convergence

The anomaly pattern strengthened, but little eastward propagation was evident through much of Feb.

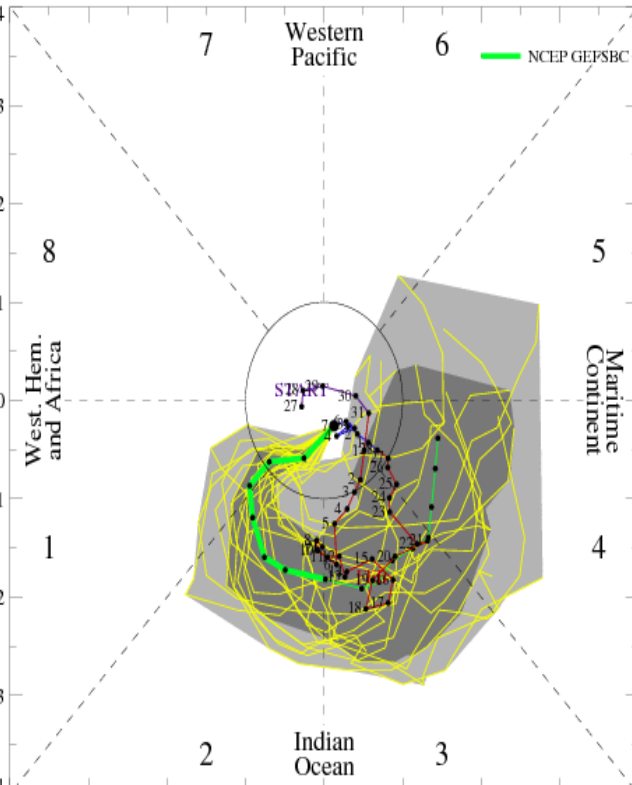
Eastward propagation became more apparent by the end of February.

Less coherent MJO recently due to destructive interference with La Nina. Kelvin wave apparent over northern South America.

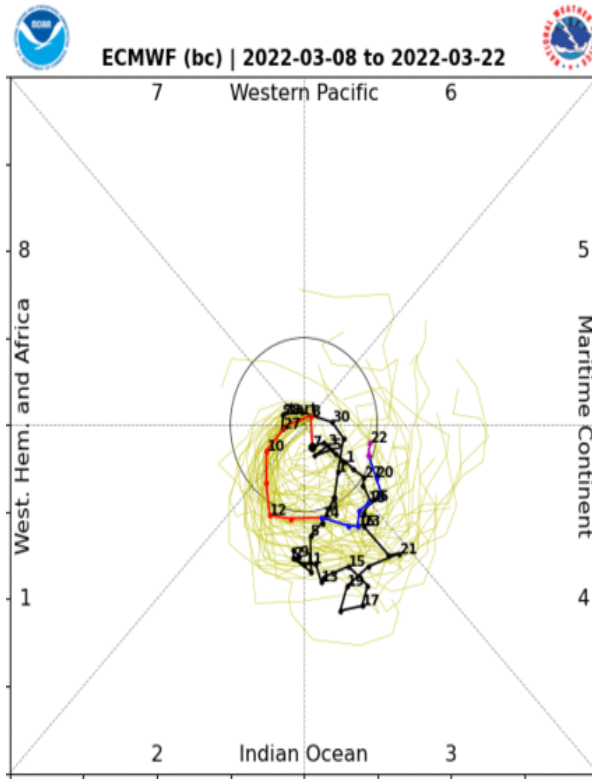


MJO Observation/Forecast

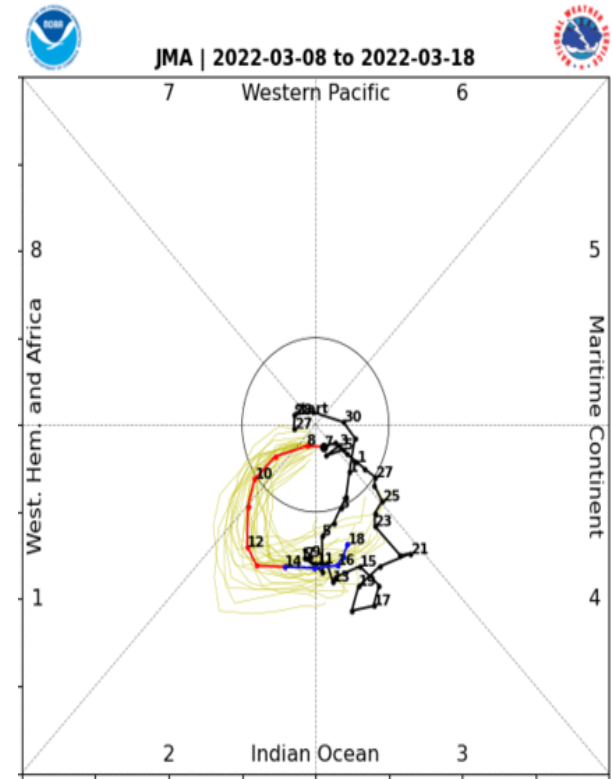
[RMM1, RMM2] forecast for Mar-08-2022 to Mar-22-2022



GEFS



ECMWF



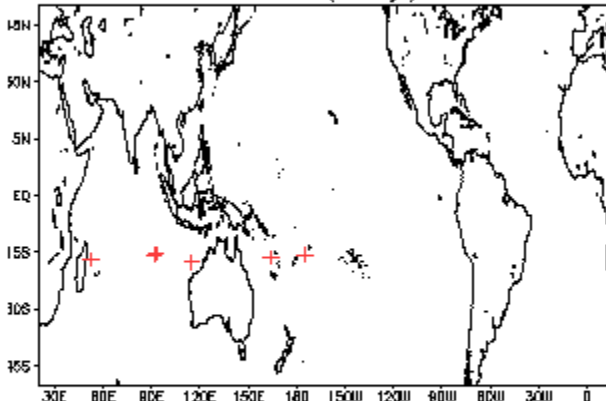
JMA

Dynamical models depict an increase in the amplitude of the RMM index.

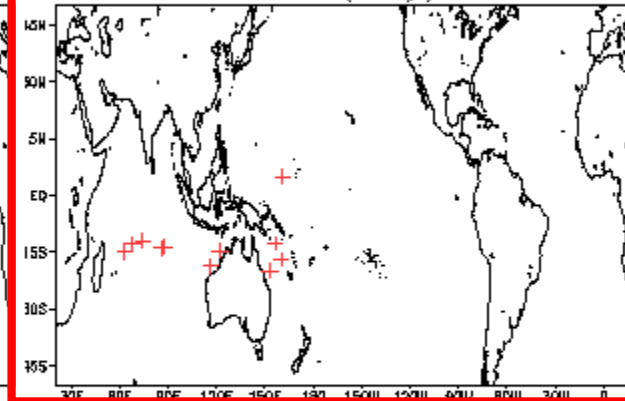
Fast eastward propagation is more consistent with a Kelvin wave.

March Tropical Storm Formation by MJO phase

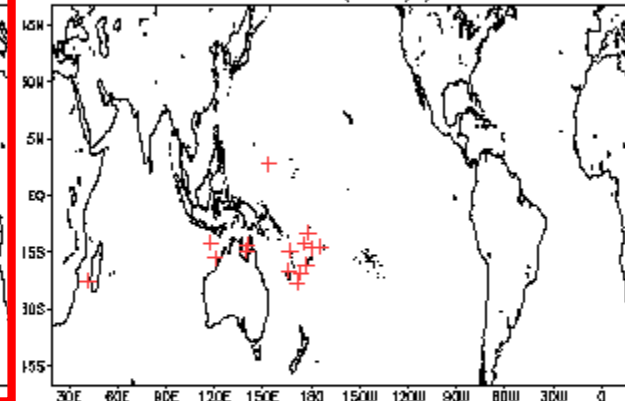
Phase 1 (98 days) 7 storms



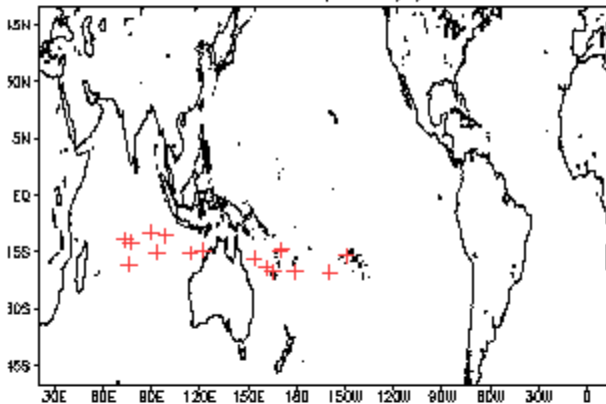
Phase 4 (72 days) 12 storms



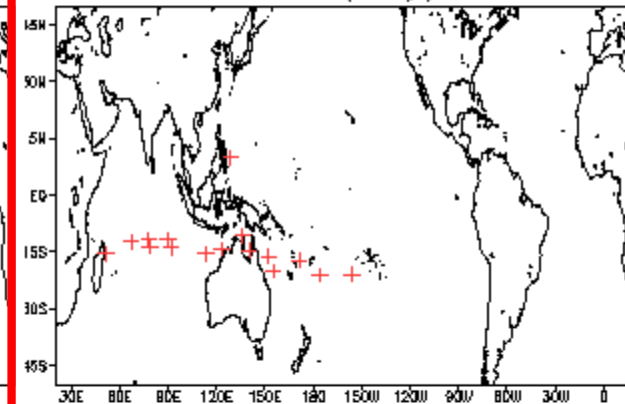
Phase 7 (81 days) 16 storms



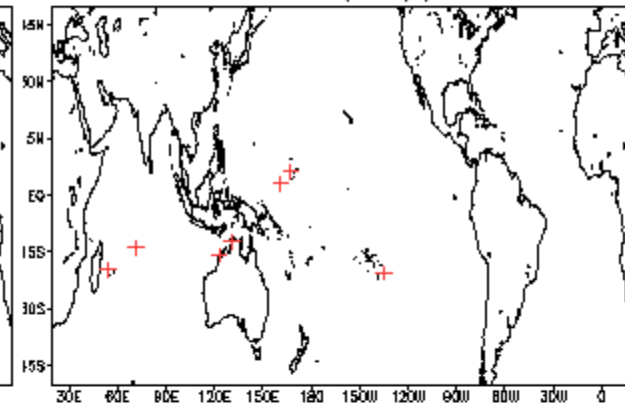
Phase 2 (111 days) 17 storms



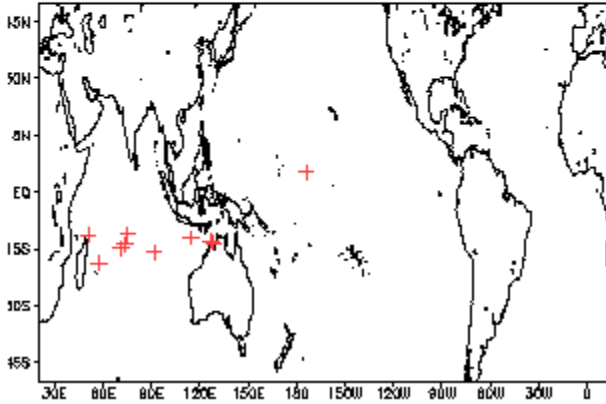
Phase 5 (77 days) 17 storms



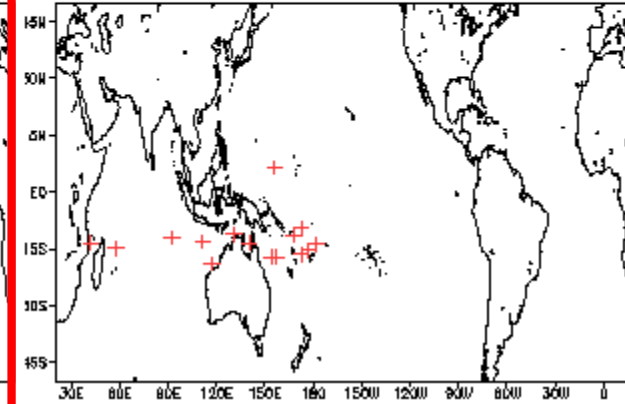
Phase 8 (92 days) 8 storms



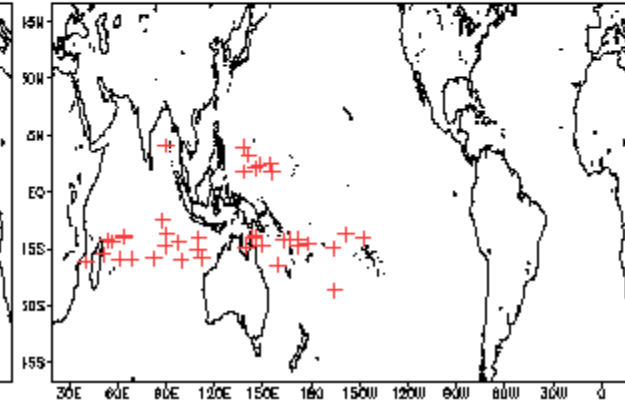
Phase 3 (108 days) 11 storms



Phase 6 (78 days) 16 storms



Null (322 days) 40 storms





JOINT TYPHOON WARNING CENTER



Naval Research Laboratory
Marine Meteorology Division
Cloud Layer Product
Valid: 2022-03-08 16:00:00

FABIO

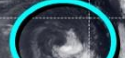
ABPW

Please refer to CPHC
(<https://www.nhc.noaa.gov/cphc/>)

TC 19S "GOMBE"



96P



ISSUE TIME: 08/1800Z
(PRODUCT OF JTWC/SATOPS)

LOW

TC development unlikely within 24 hours

MEDIUM

TC development likely, but expected to occur beyond 24 hours

HIGH

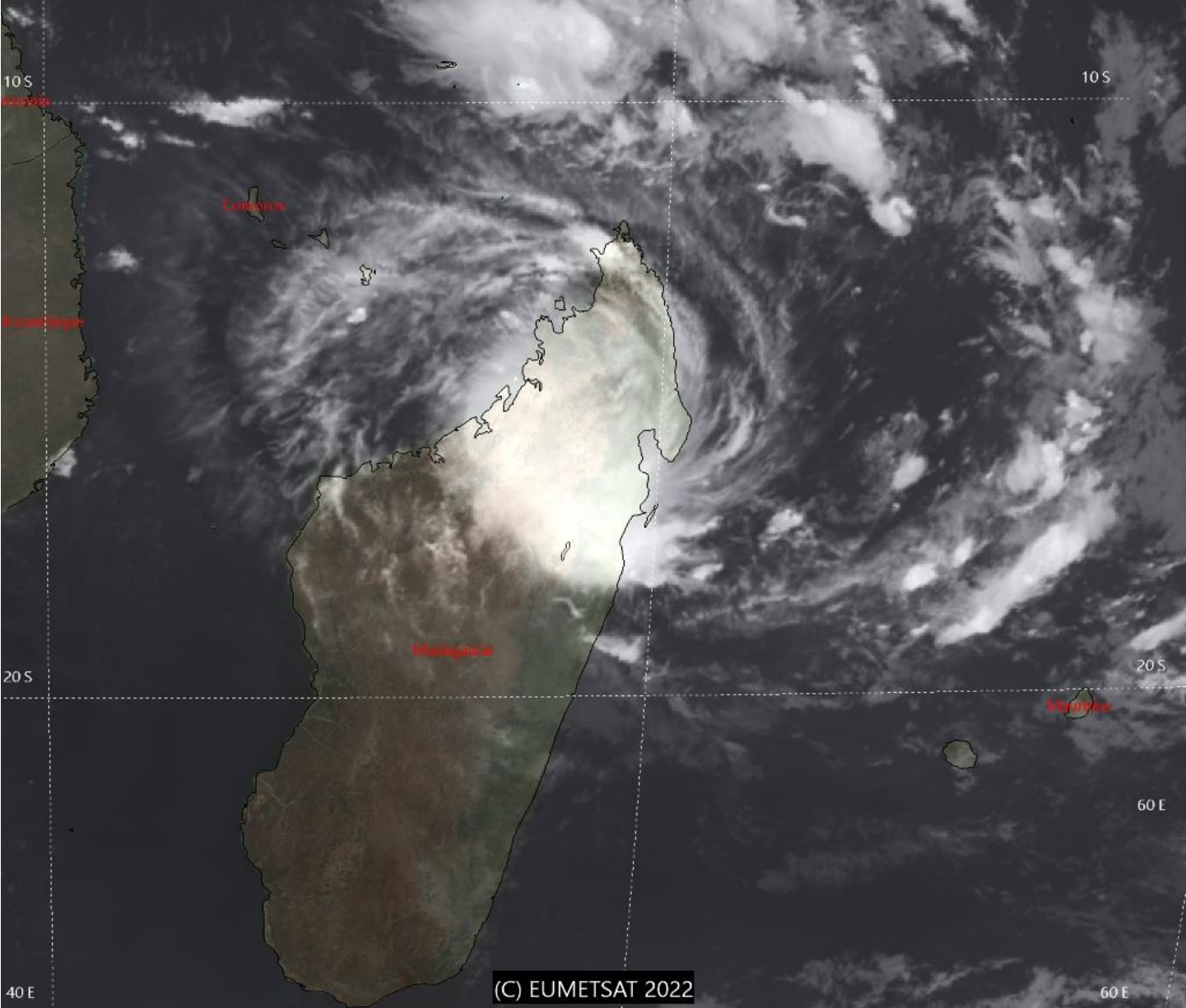
TC development likely within 24 hours
(Reference TCFA)

SUB TROPICAL

Monitoring for potential transition to TC. Invest label color denotes tropical transition probability

Tropical Cyclone (Reference Warning)

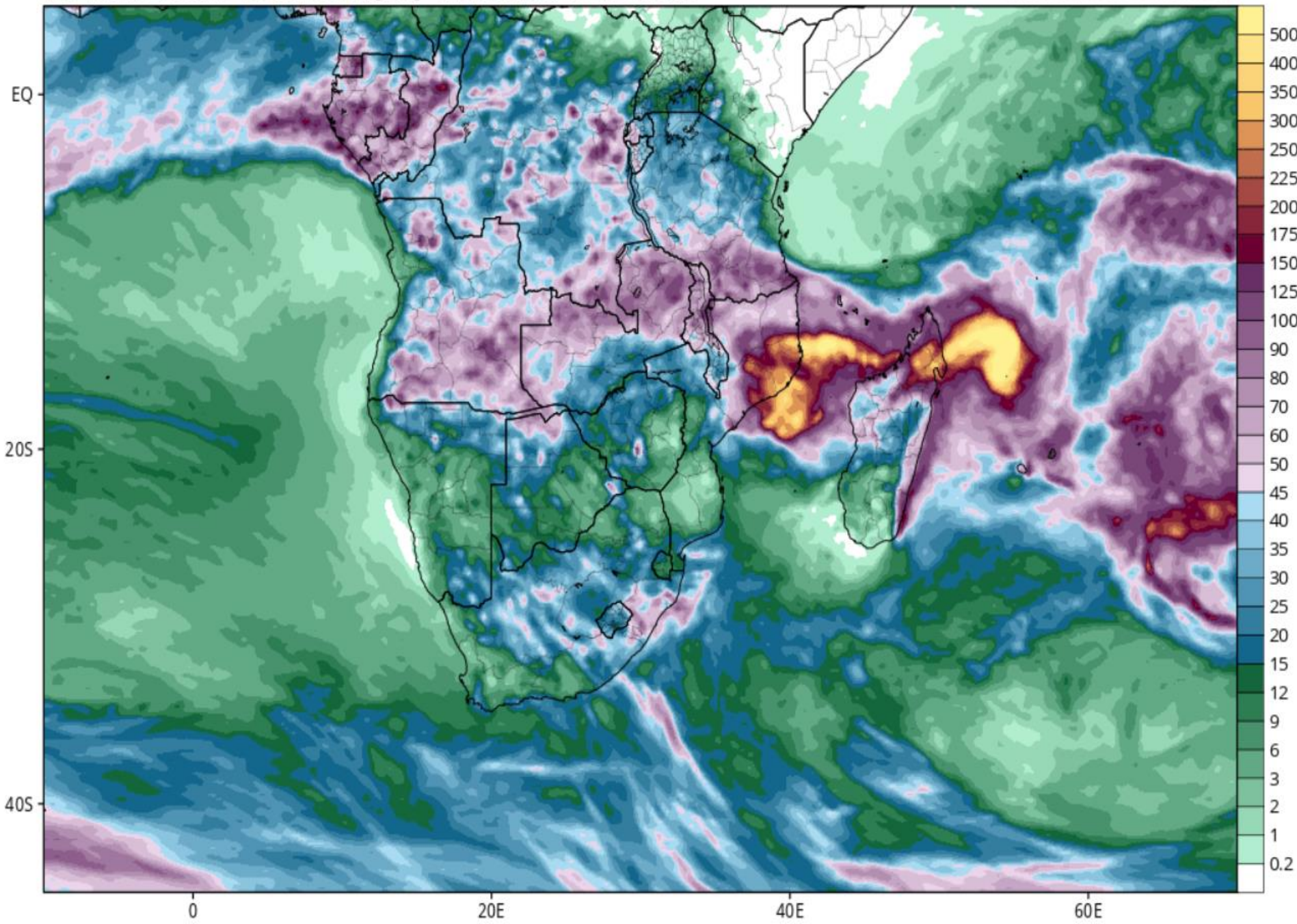
TROPICAL CYCLONE 19S (GOMBE)
VALID TIME: 08/0600Z
(PRODUCT OF JTWC/SATOPS)



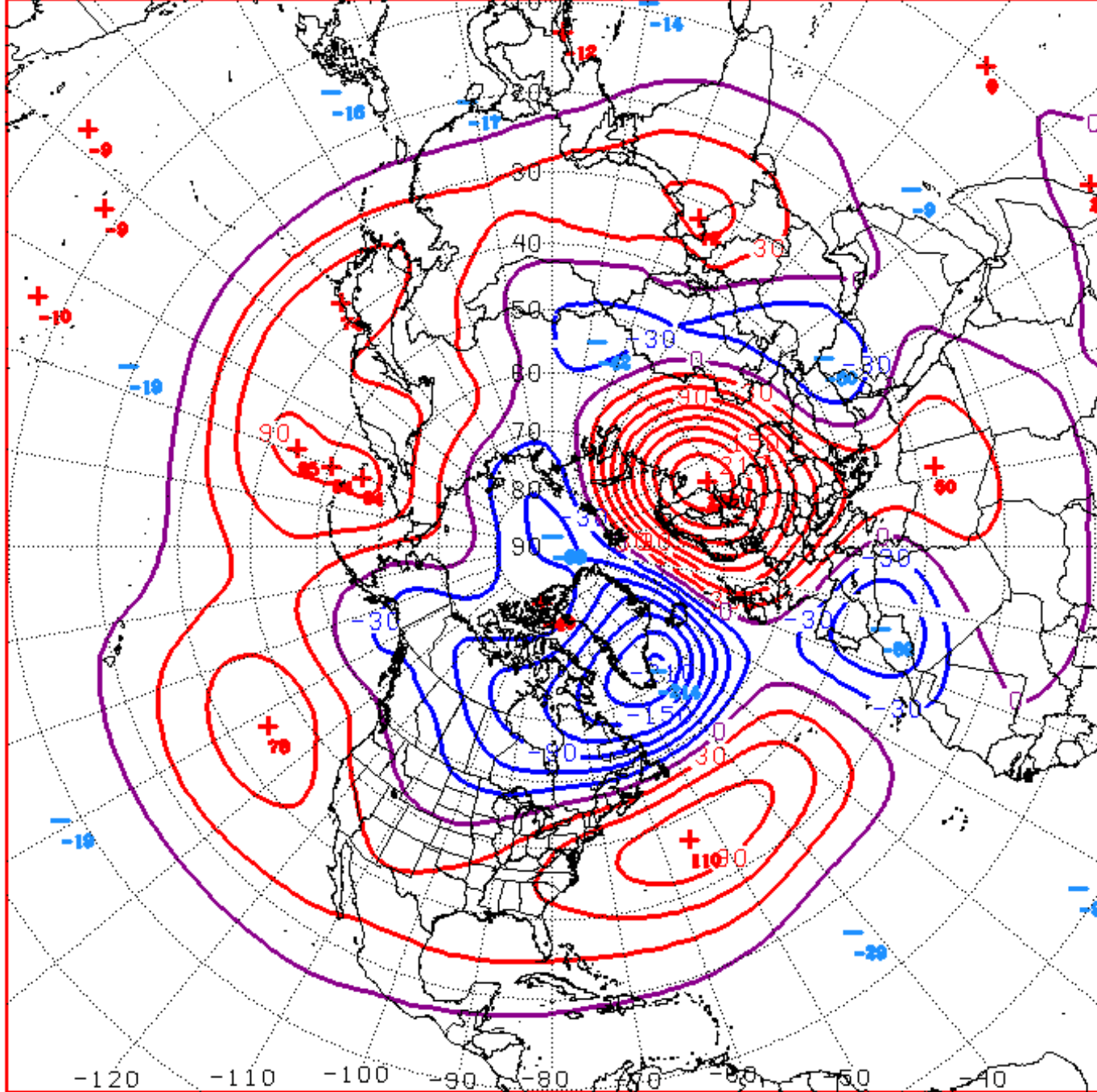
GFS Total Accumulated Precipitation (mm) from 12z08Mar2022 to 12z16Mar2022

Init: 12z Mar 08 2022 Forecast Hour: [192] valid at 12z Wed, Mar 16 2022

TROPICALTIDBITS.COM

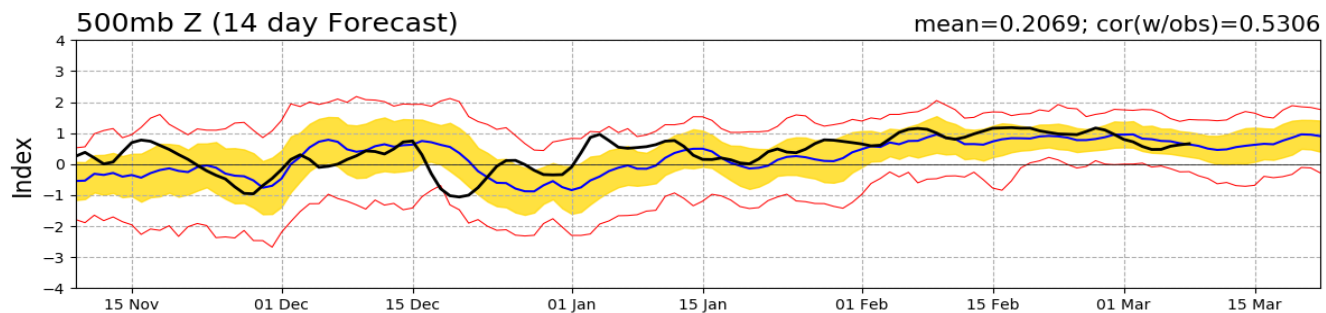
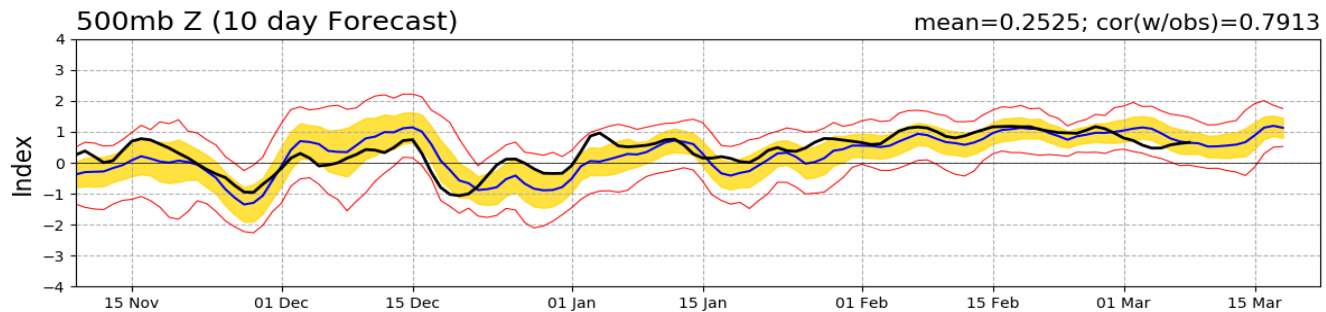
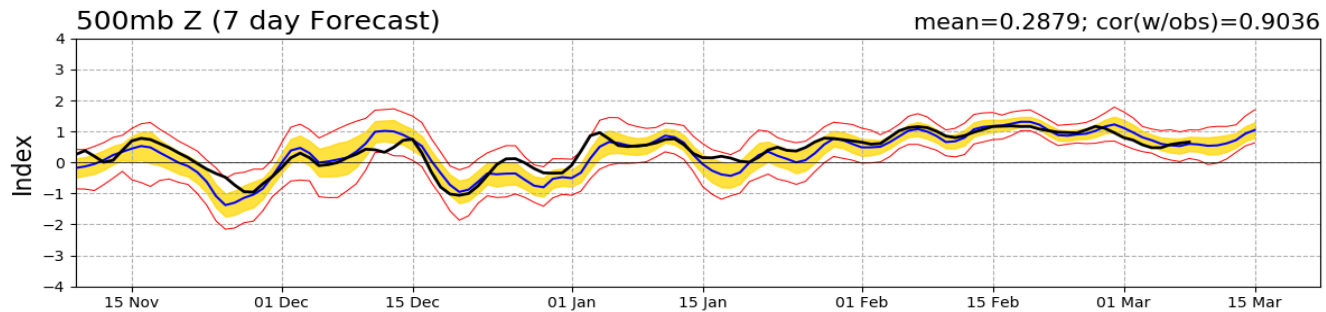
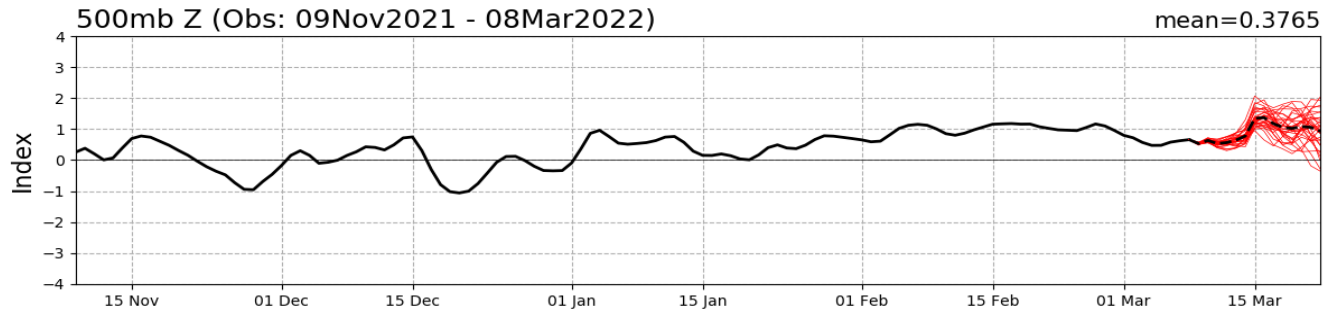


Connections to U.S. Impacts

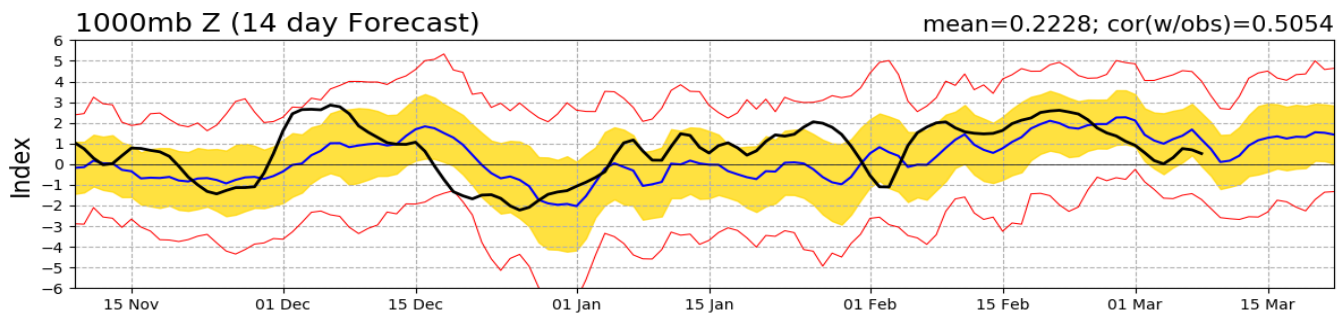
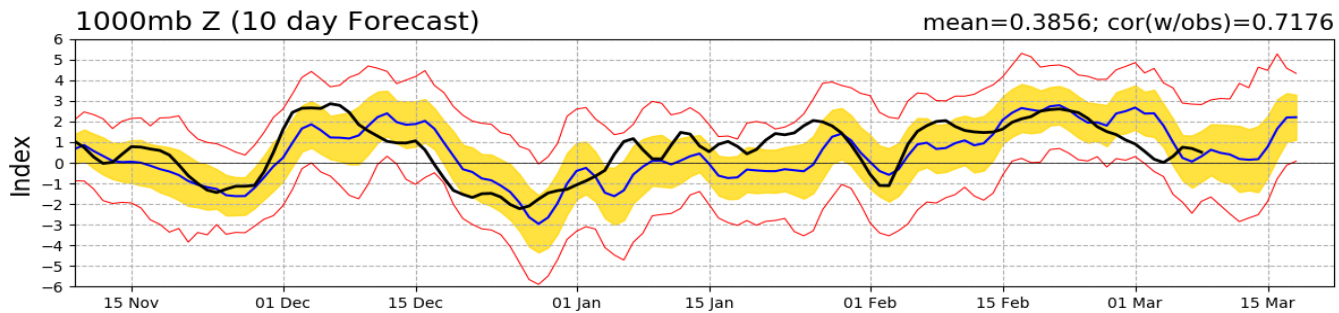
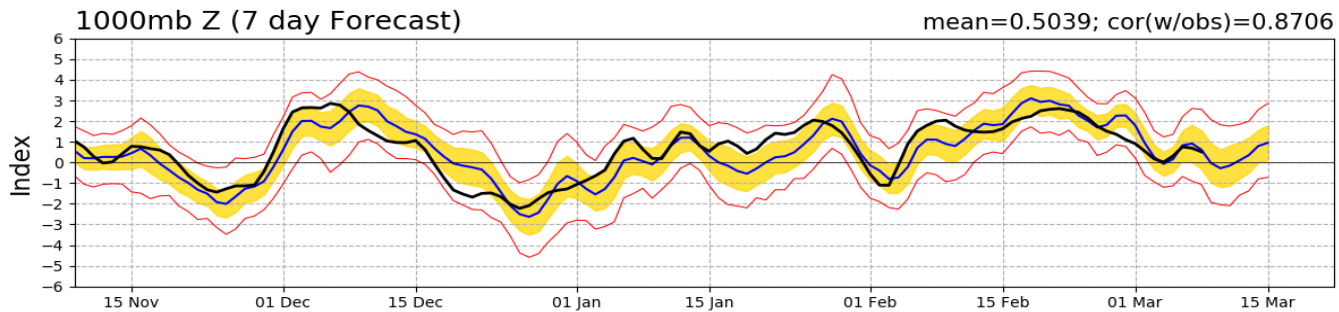
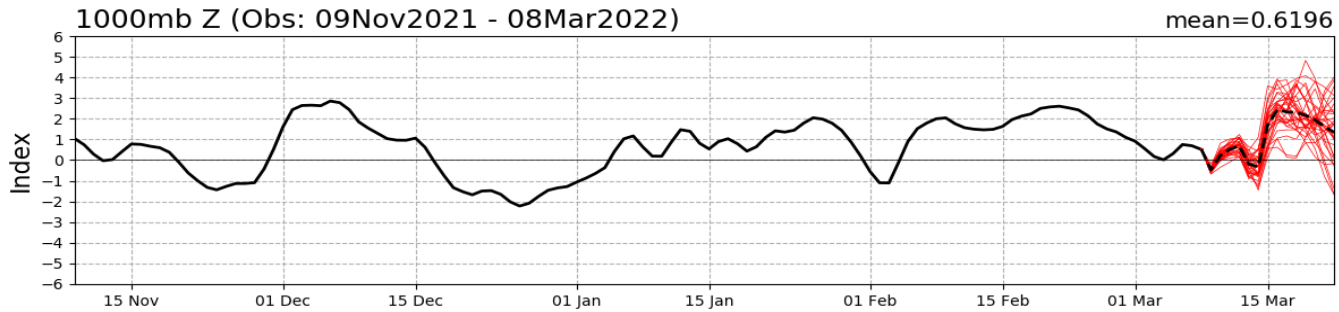


D+11 500 MB ANOMALIES FROM ALZ ENSM
CPC MAP MADE MAR 08 2022 1358 UTC CNTD MAR 19 2022

NAO Index: Observed & GEFS Forecasts



AO Index: Observed & GEFS Forecasts

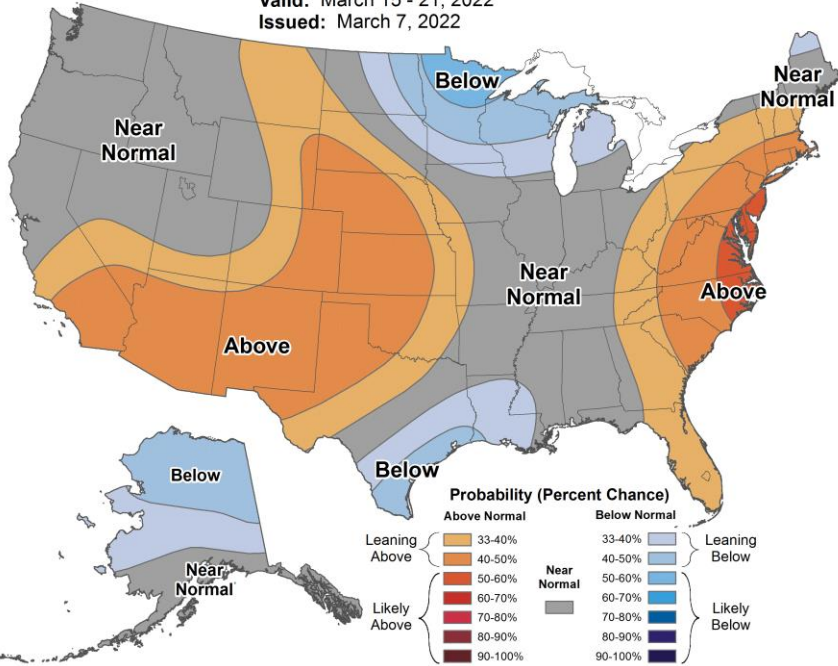


Week 2 – Temperature and Precipitation



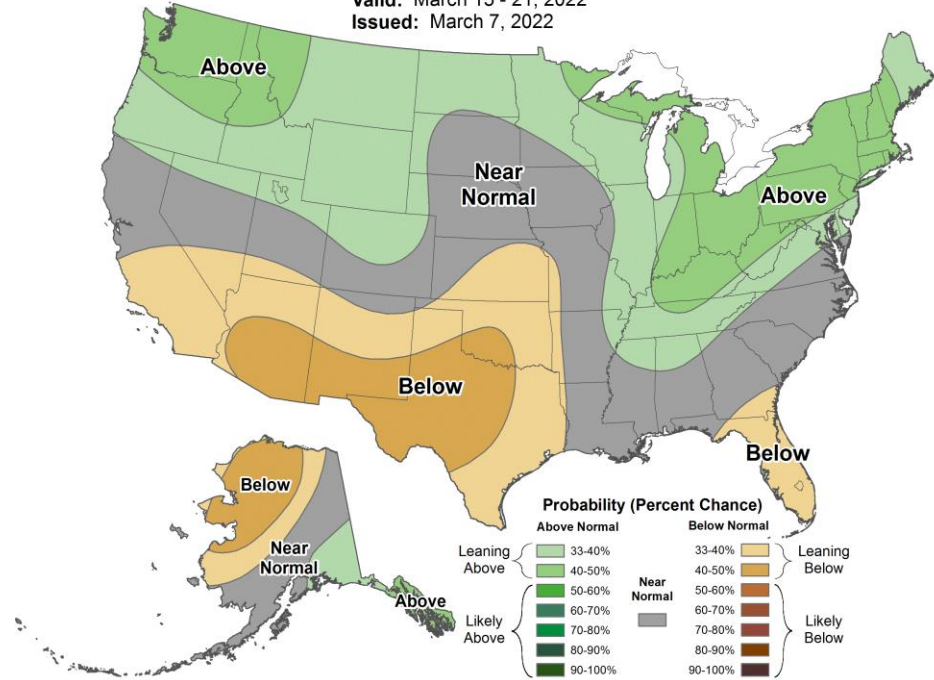
8-14 Day Temperature Outlook

Valid: March 15 - 21, 2022
Issued: March 7, 2022



8-14 Day Precipitation Outlook

Valid: March 15 - 21, 2022
Issued: March 7, 2022



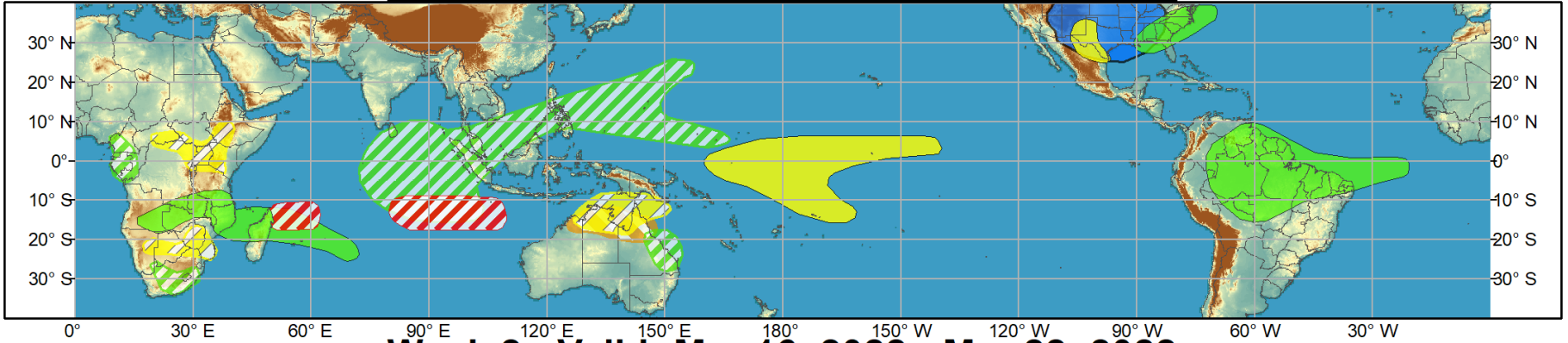
Today's week-2 outlook is warmer and continues with the La Nina precipitation pattern.



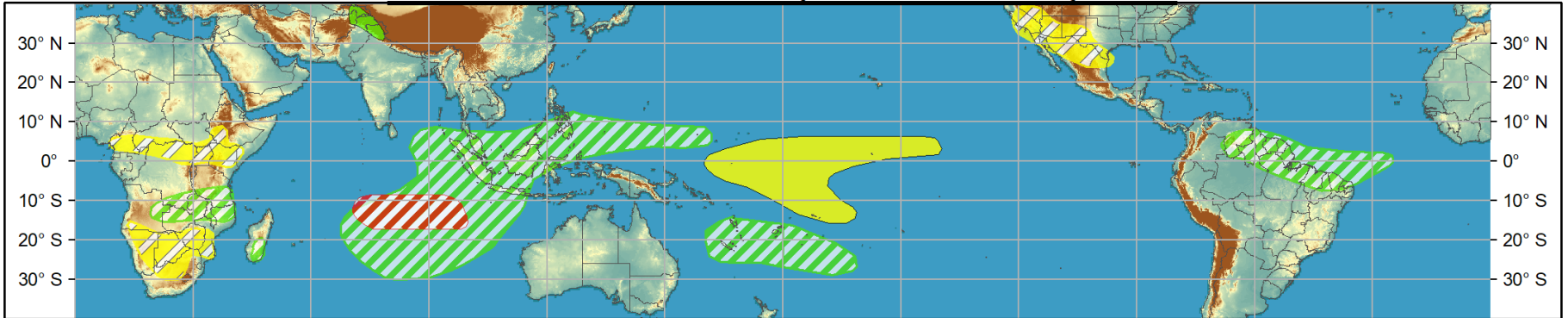
Global Tropics Hazards and Benefits Outlook - Climate Prediction Center



Week 1 - Valid: Mar 09, 2022 - Mar 15, 2022



Week 2 - Valid: Mar 16, 2022 - Mar 22, 2022



Confidence
High Moderate

- Tropical Cyclone Formation** Development of a tropical cyclone (tropical depression - TD, or greater strength).
- Above-average rainfall** Weekly total rainfall in the upper third of the historical range.
- Below-average rainfall** Weekly total rainfall in the lower third of the historical range.
- Above-normal temperatures** 7-day mean temperatures in the upper third of the historical range.
- Below-normal temperatures** 7-day mean temperatures in the lower third of the historical range.

Produced: 03/08/2022

Forecaster: Pugh

Product is updated once per week, except from 6/1 - 11/30 for the region from 120E to 0, 0 to 40N. The product targets broad scale conditions integrated over a 7-day period for US interests only. Consult your local responsible forecast agency.

