

Global Tropics Hazards And Benefits Outlook

3/29/2022

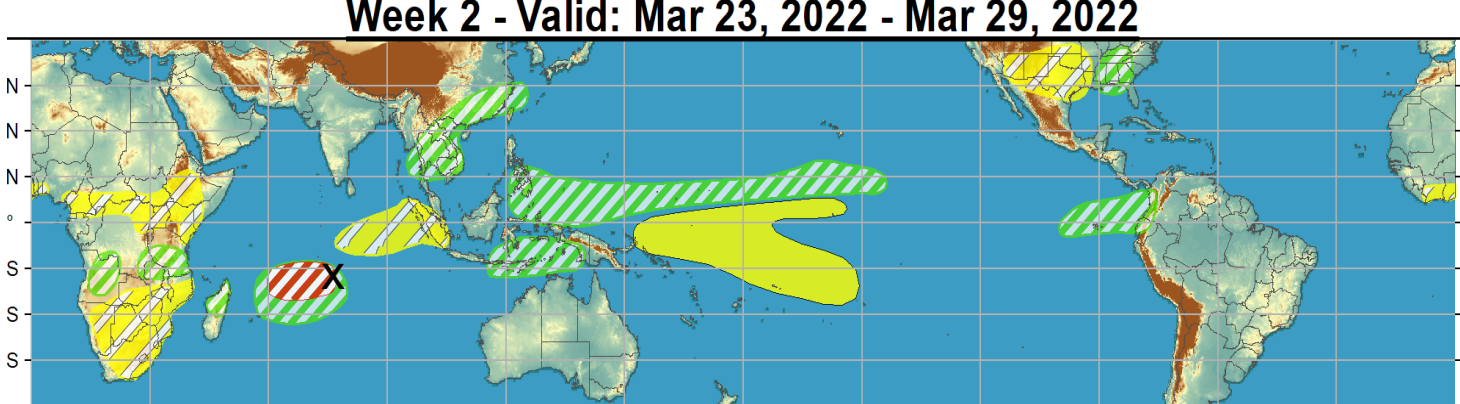
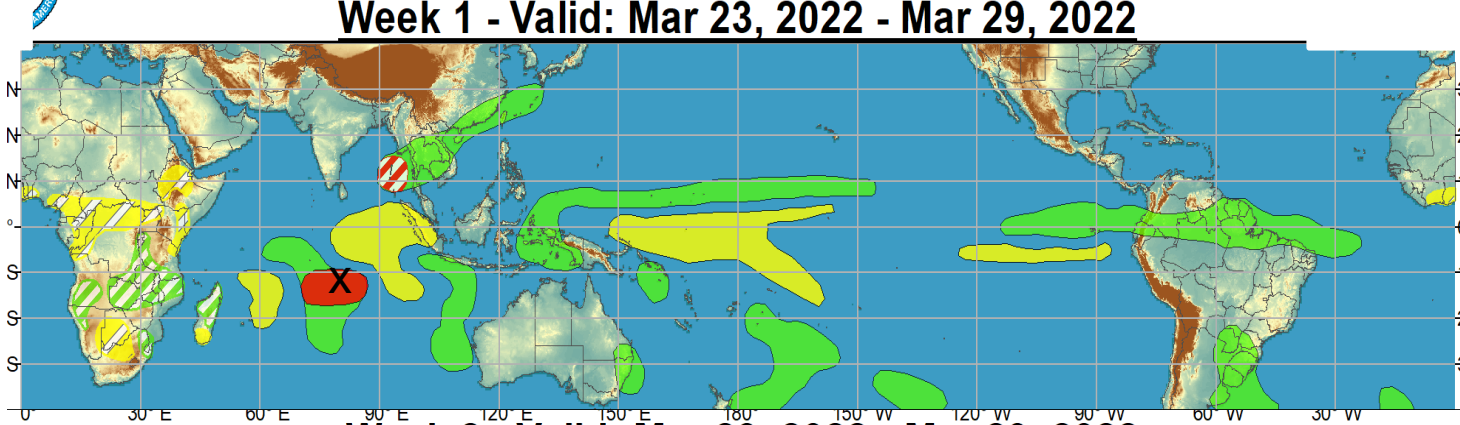
Brad Pugh and Tom Collow

Outline

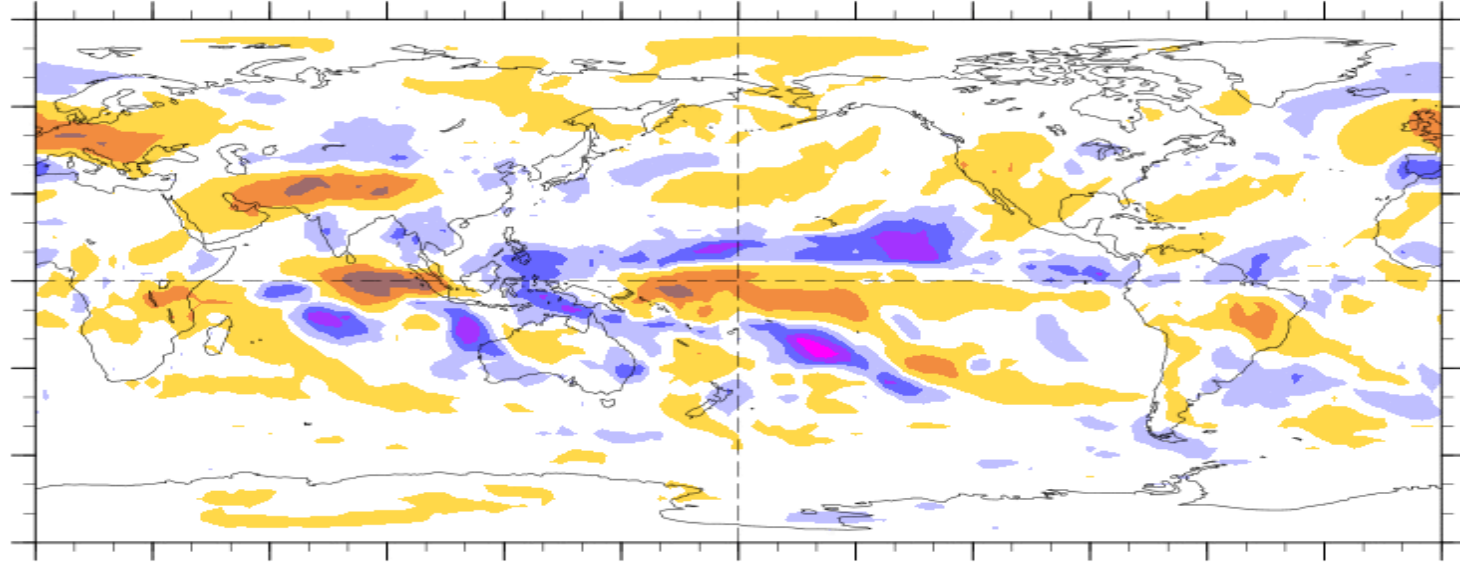
1. Review of Recent Conditions
2. Synopsis of Climate Modes
3. GTH Outlook and Forecast Discussion
4. Connections to U.S. Impacts

Outlook Review

X= Tropical Cyclone
Halima (3/23)



7-Day Average OLR Anomaly 2022/03/21 - 2022/03/27



Cool shading
More clouds/rain

Warm shading
Less clouds/rain

Synopsis of Climate Modes

ENSO: (March 10, 2022 Update)

next update on Thursday, April 14th

- ENSO Alert System Status: [La Niña Advisory](#)
- La Niña is favored to continue into the Northern Hemisphere Summer (53% chance during June-August 2022), with a 40-50% chance of La Niña or ENSO-neutral thereafter

MJO and other subseasonal tropical variability:

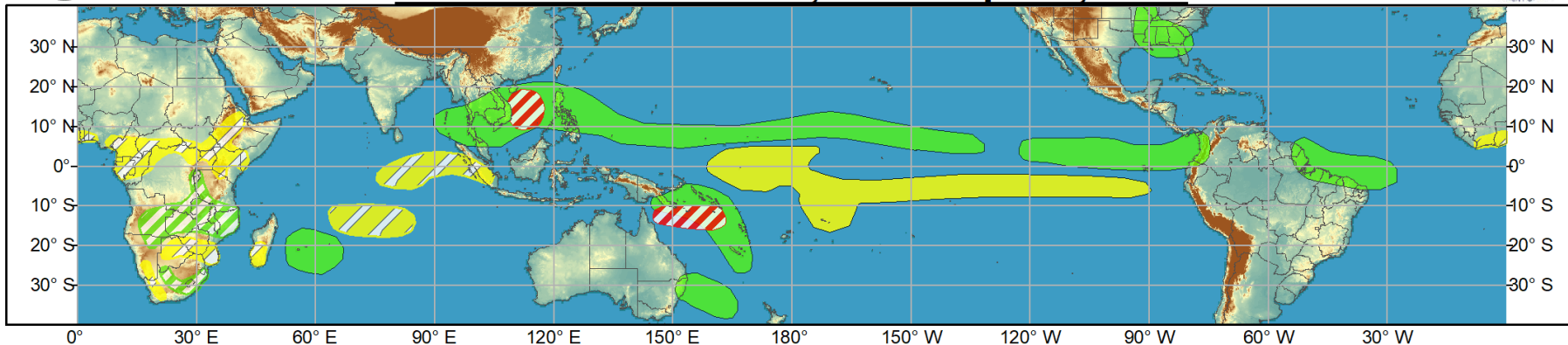
- A robust MJO was apparent in the low and upper-level wind fields and also the 200-hPa velocity potential anomalies during mid to late March. However, the MJO was unable to have a major influence on anomalous tropical rainfall with La Niña remaining dominant.
- During the past several days, the amplitude of the RMM index decreased within the unit circle.
- Dynamical models are in good agreement that the MJO remains weak during the next two weeks.



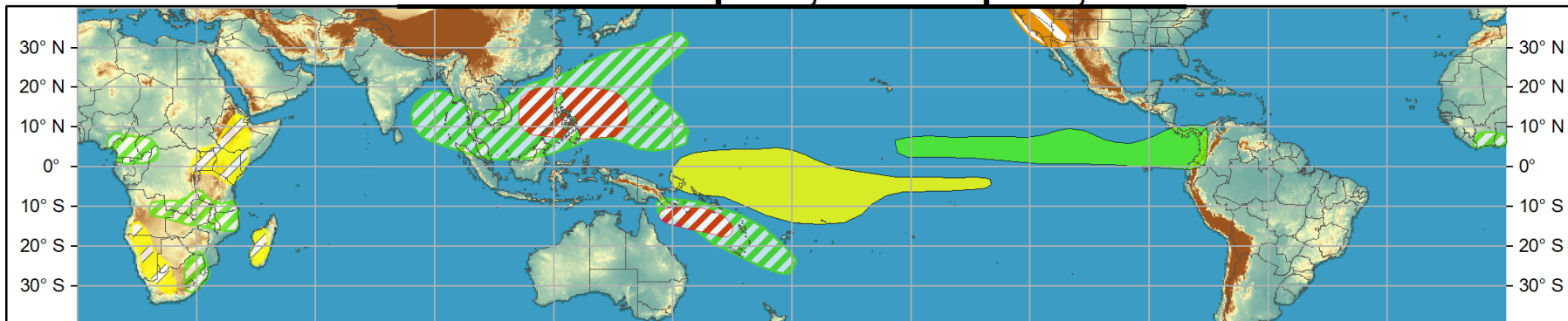
Global Tropics Hazards and Benefits Outlook - Climate Prediction Center



Week 1 - Valid: Mar 30, 2022 - Apr 05, 2022



Week 2 - Valid: Apr 06, 2022 - Apr 12, 2022



Confidence
High Moderate

- Tropical Cyclone Formation** Development of a tropical cyclone (tropical depression - TD, or greater strength).
- Above-average rainfall** Weekly total rainfall in the upper third of the historical range.
- Below-average rainfall** Weekly total rainfall in the lower third of the historical range.
- Above-normal temperatures** 7-day mean temperatures in the upper third of the historical range.
- Below-normal temperatures** 7-day mean temperatures in the lower third of the historical range.

Produced: 03/29/2022

Forecaster: Pugh

Product is updated once per week, except from 6/1 - 11/30 for the region from 120E to 0, 0 to 40N. The product targets broad scale conditions integrated over a 7-day period for US interests only. Consult your local responsible forecast agency.



IR Satellite & 200-hpa Velocity Potential Anomalies

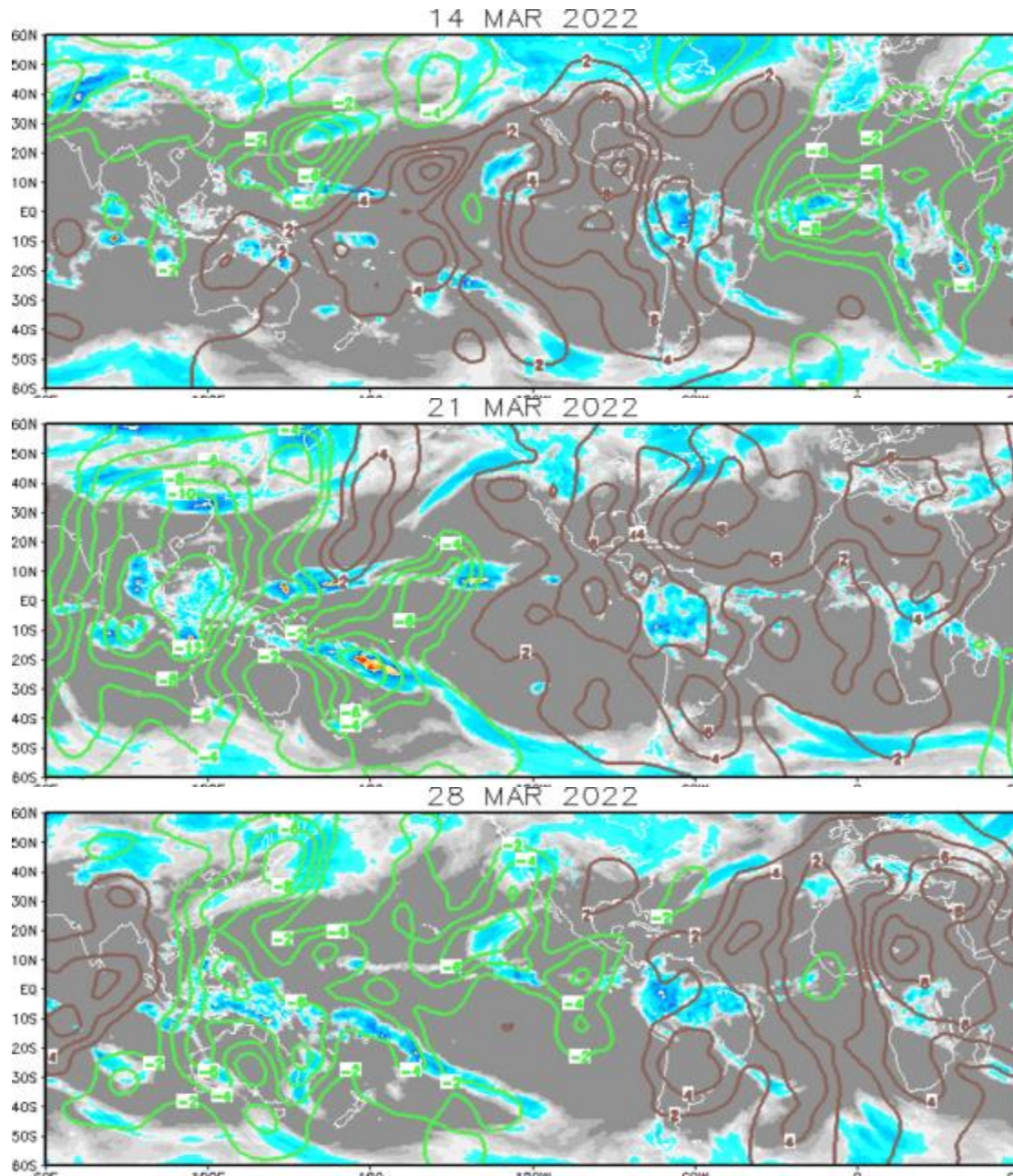
Green: Enhanced Divergence

Brown: Enhanced Convergence

By the middle of March MJO became much more well-defined and began propagating eastward.

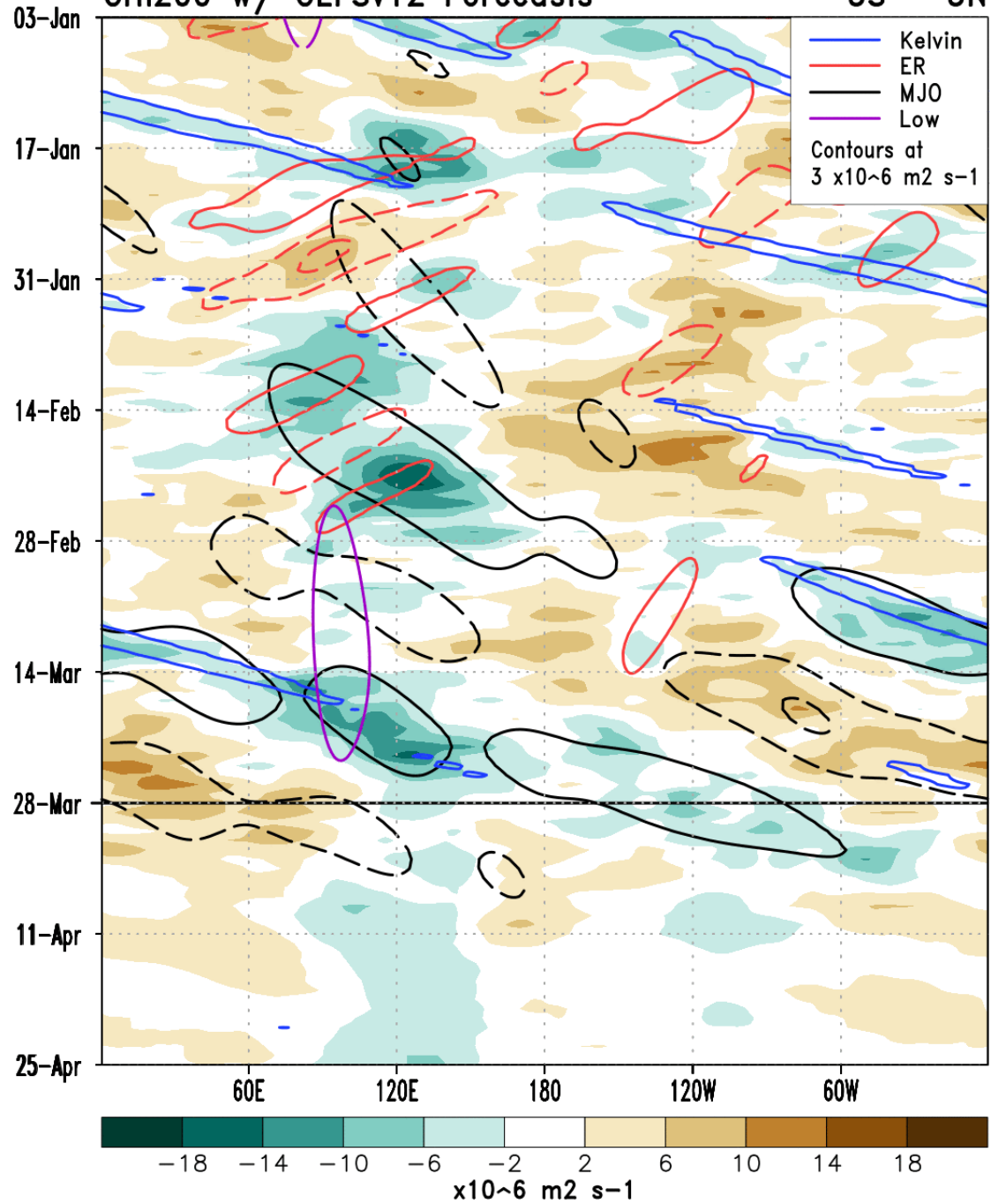
Center of enhanced convection now centered over Maritime Continent.

As of March 28th, a well-defined MJO continued with its enhanced phase expanding east of the Date Line.



CHI200 w/ GEFSv12 Forecasts

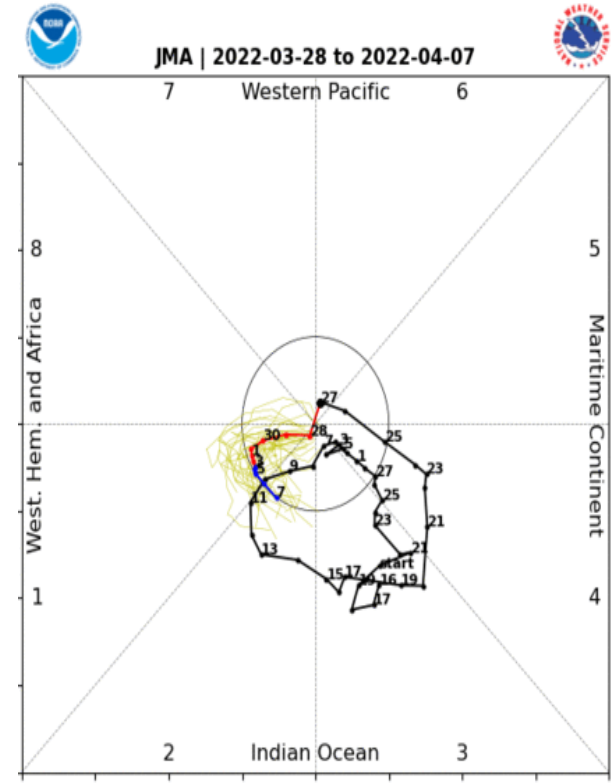
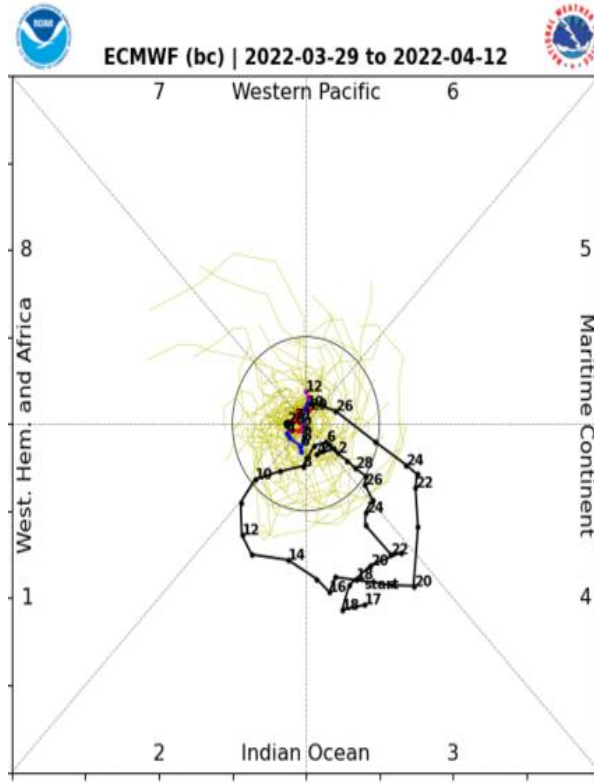
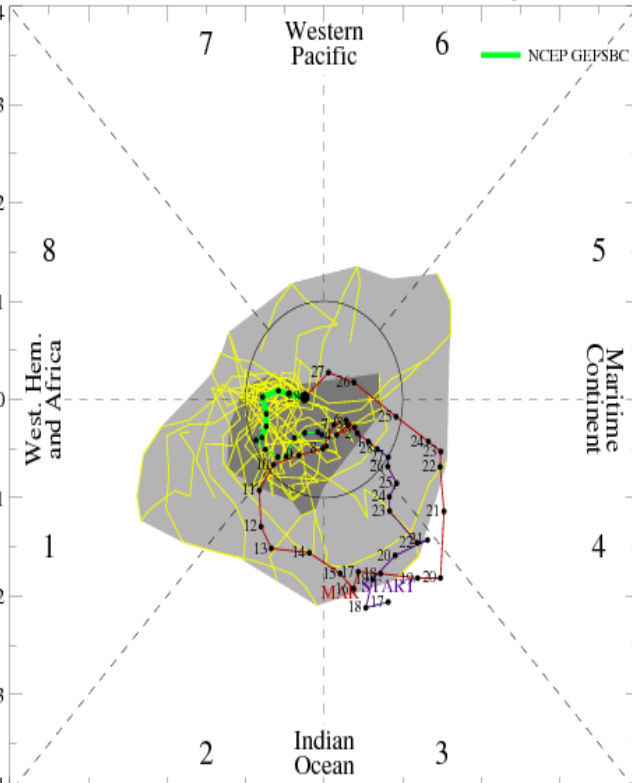
5S - 5N



The GEFS depicts a less coherent MJO by early April.

MJO Observation/Forecast

[RMM1, RMM2] forecast for Mar-29-2022 to Apr-12-2022



Following the eastward propagation (phases 2, 3, and 4) of the MJO during mid to late March, the RMM index decreased to within the unit circle in recent days.

The GEFS and ECMWF means are in good agreement that the MJO remains weak during the next two weeks.



JOINT TYPHOON WARNING CENTER



Naval Research Laboratory
Marine Meteorology Division
Cloud Layer Product
Valid: 2022-03-29 04:00:00

FABIO

ABPW

Please refer to CPHC
(<https://www.nhc.noaa.gov/cphc/>)

93W

TC 22S "HALIMA"

ISSUE TIME: 29/0600Z
(PRODUCT OF JTWC/SATOPS)

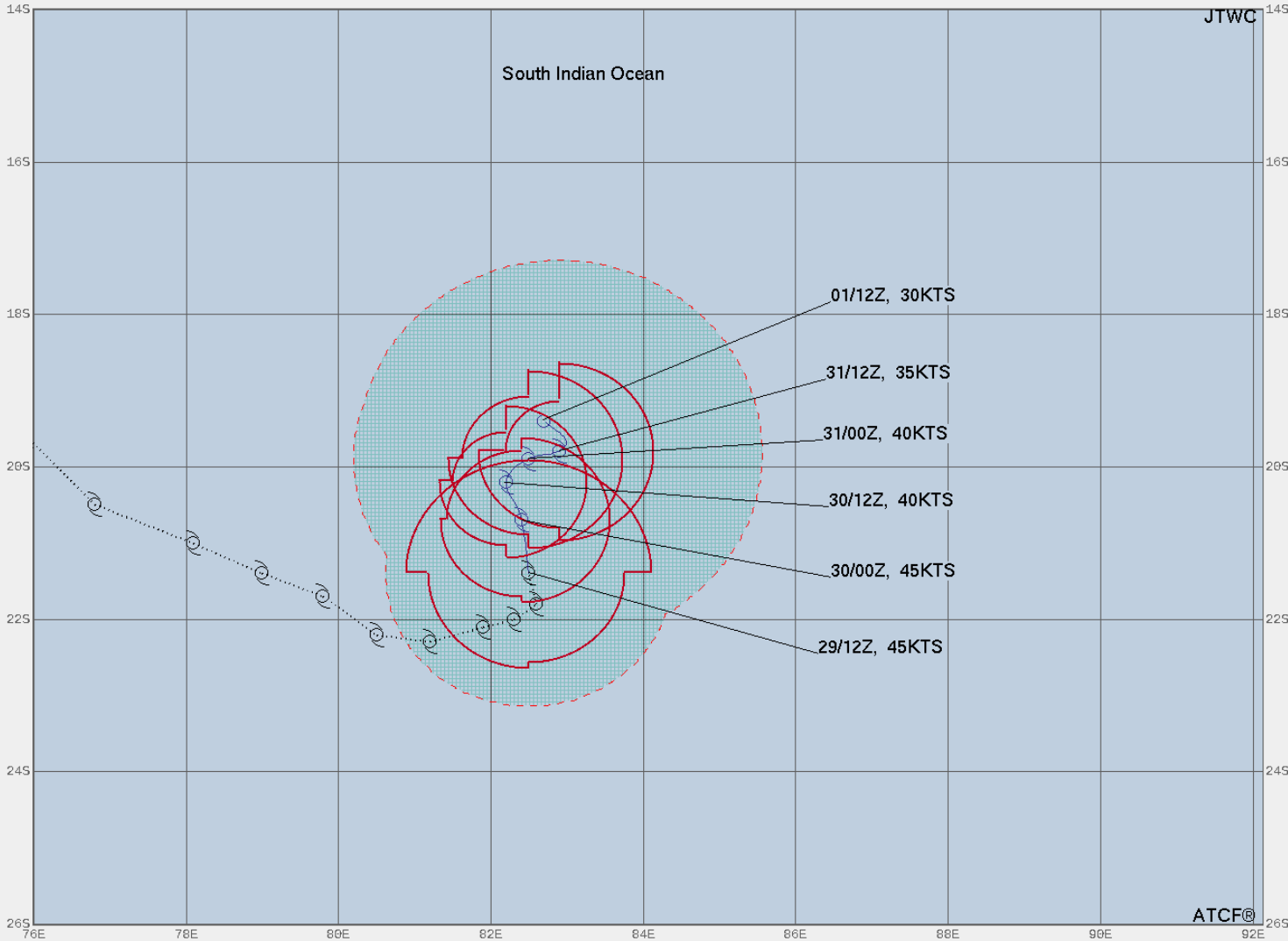
LOW TC development unlikely within 24 hours

MEDIUM TC development likely, but expected to occur beyond 24 hours

HIGH TC development likely within 24 hours (Reference TCFA)

SUB TROPICAL Monitoring for potential transition to TC. Invest label color denotes tropical transition probability


Tropical Cyclone (Reference Warning)



JTWC

TROPICAL CYCLONE 22S (HALIMA) WARNING #13
 WTX532 PGTW 291500
 291200Z POSIT: NEAR 21.4S 82.5E
 MOVING 345 DEGREES TRUE AT 04 KNOTS
 MAXIMUM SIGNIFICANT WAVE HEIGHT: 22 FEET
 29/12Z, WINDS 045 KTS, GUSTS TO 055 KTS
 30/00Z, WINDS 045 KTS, GUSTS TO 055 KTS
 30/12Z, WINDS 040 KTS, GUSTS TO 050 KTS
 31/00Z, WINDS 040 KTS, GUSTS TO 050 KTS
 31/12Z, WINDS 035 KTS, GUSTS TO 045 KTS
 01/12Z, WINDS 030 KTS, GUSTS TO 040 KTS

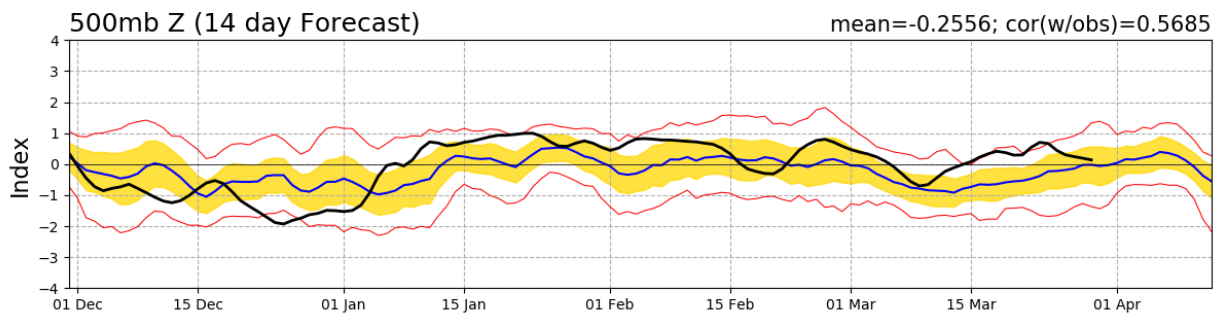
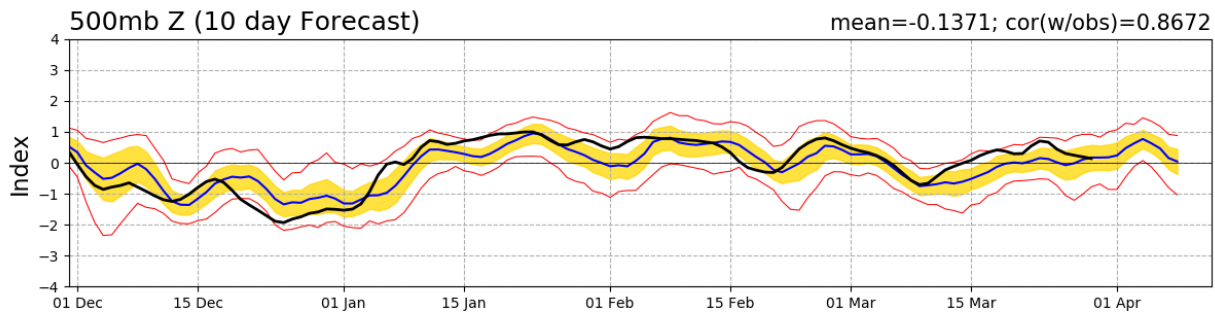
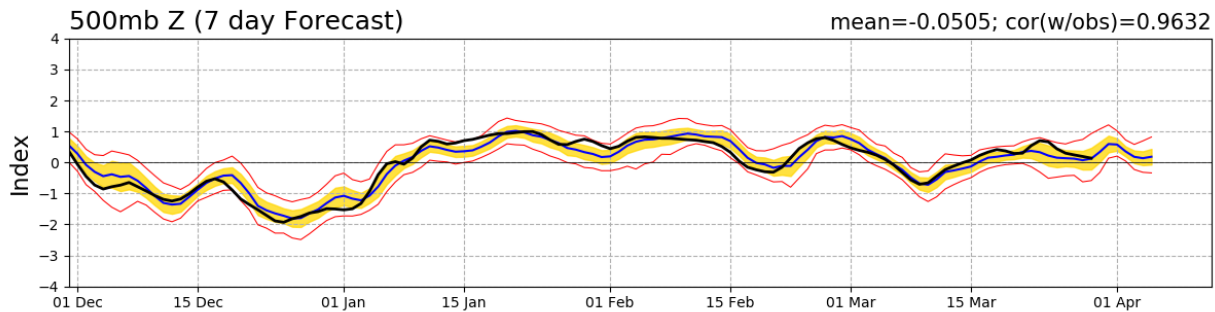
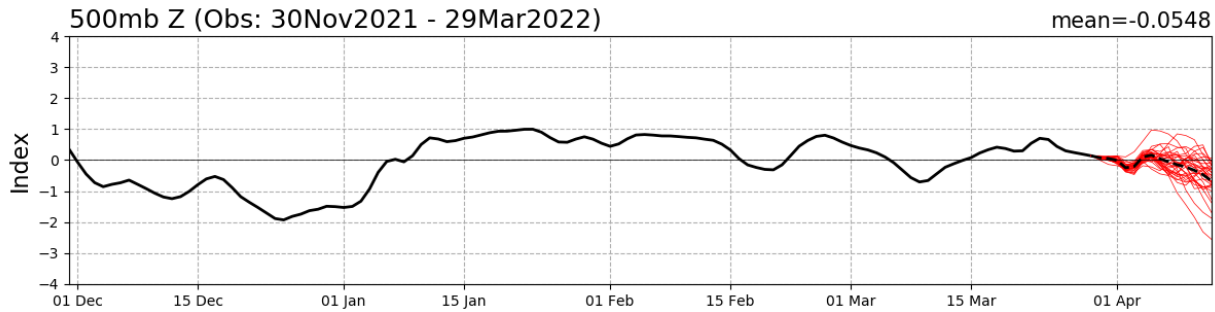
- ○ LESS THAN 34 KNOTS
- ○ 34-63 KNOTS
- ● MORE THAN 63 KNOTS
- FORECAST CYCLONE TRACK
- PAST CYCLONE TRACK
- DENOTES 34 KNOT WIND DANGER AREA/USN SHIP AVOIDANCE AREA
- ○ ○ ○ FORECAST 34/50/64 KNOT WIND RADII (WINDS VALID OVER OPEN OCEAN ONLY)



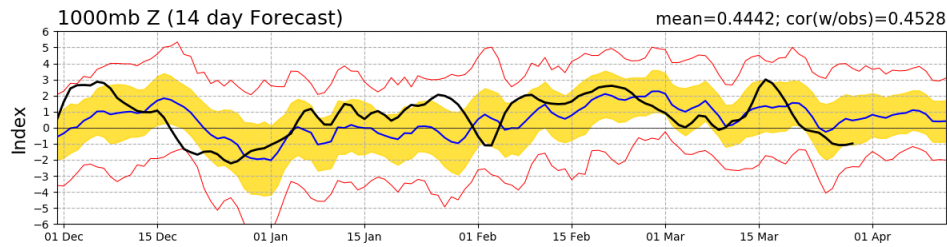
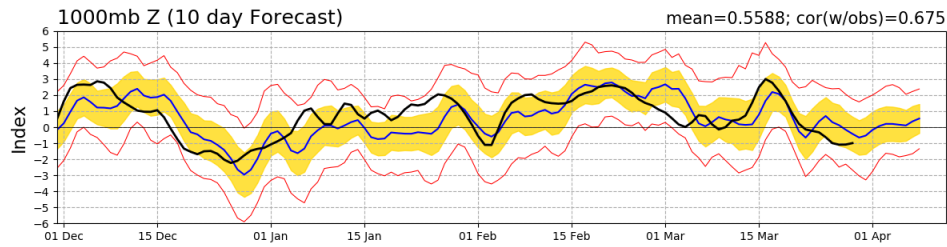
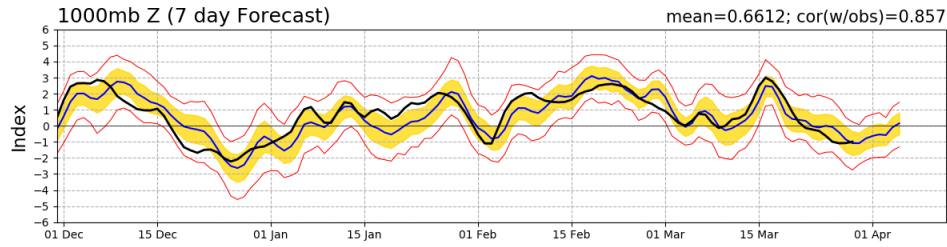
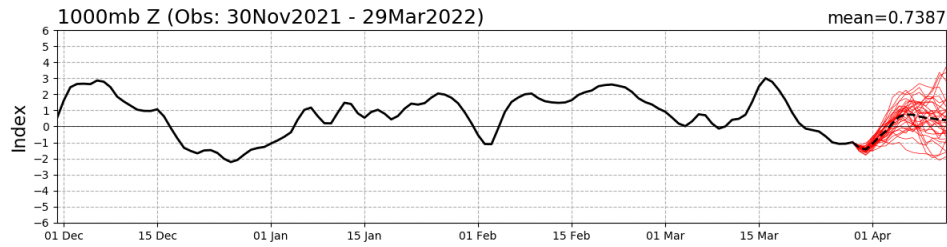
ATCF®

Connections to U.S. Impacts

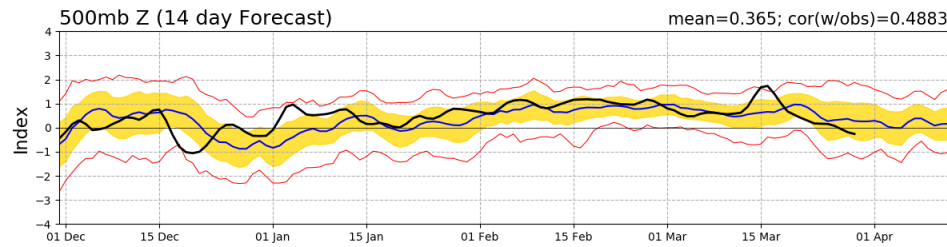
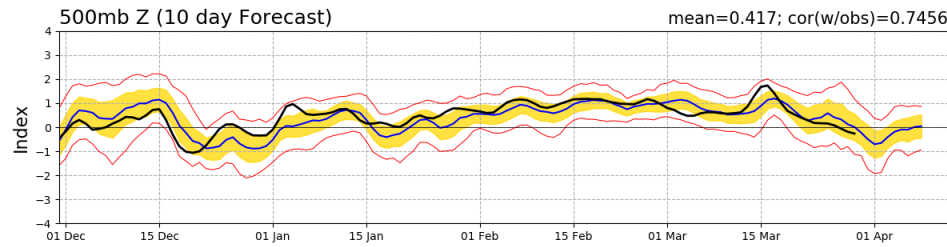
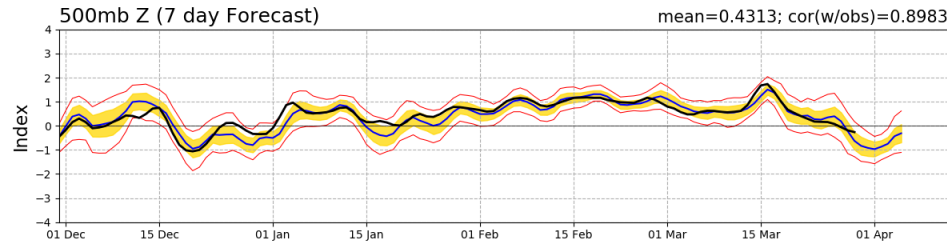
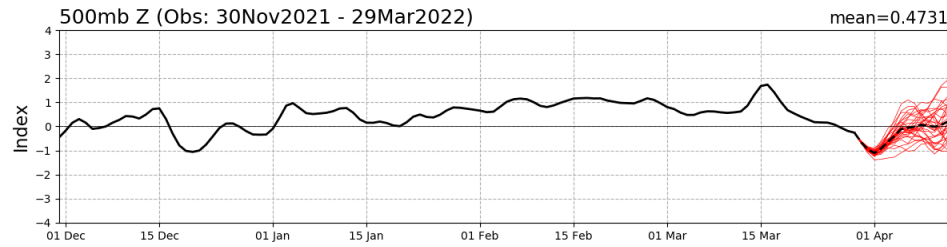
PNA Index: Observed & GEFS Forecasts

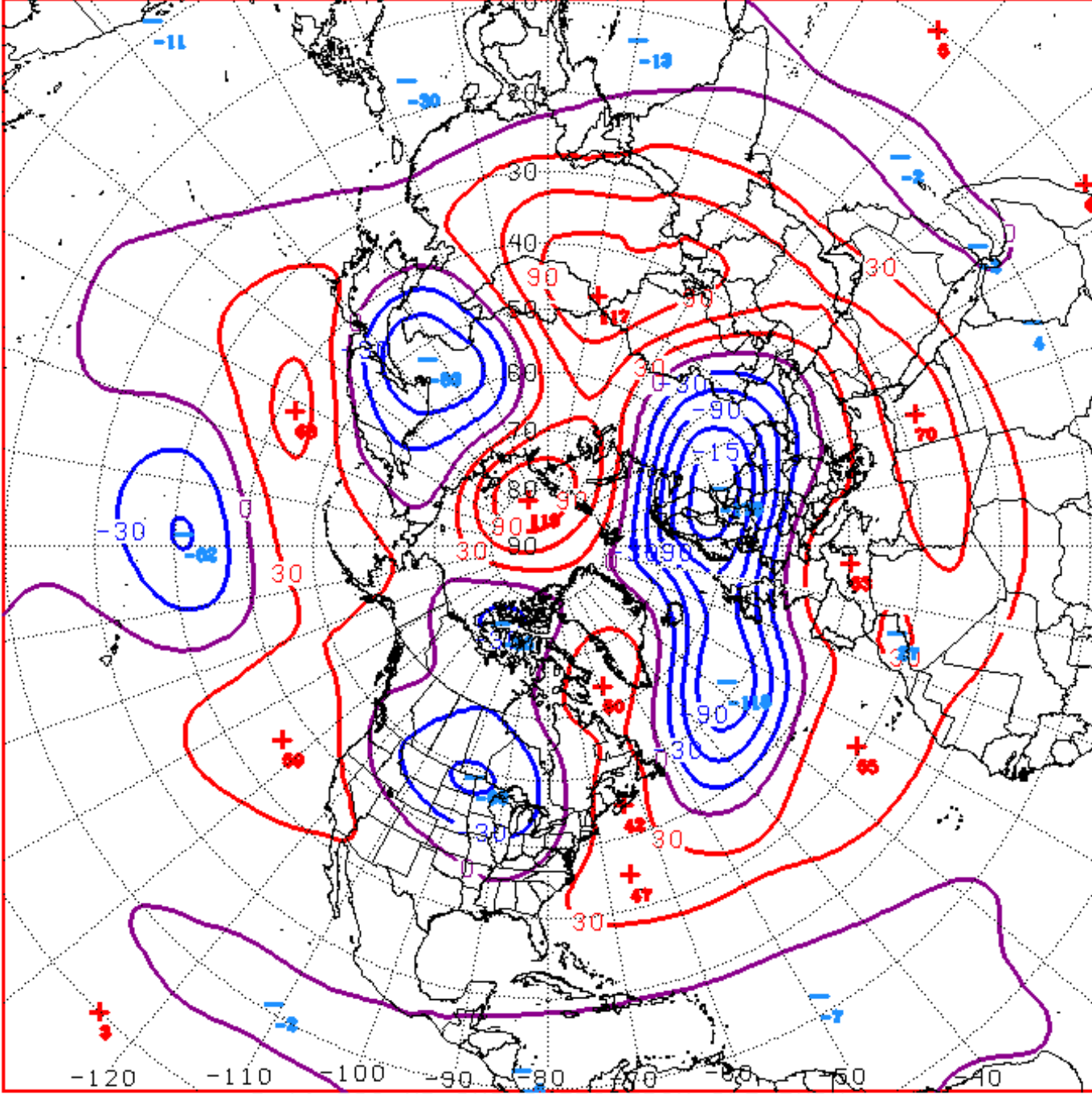


AO Index: Observed & GEFS Forecasts



NAO Index: Observed & GEFS Forecasts





D+11 500 MB ANOMALIES FROM ALZ ENSM
 CPC MAP MADE MAR 29 2022 1355 UTC CNTD APR 09 2022

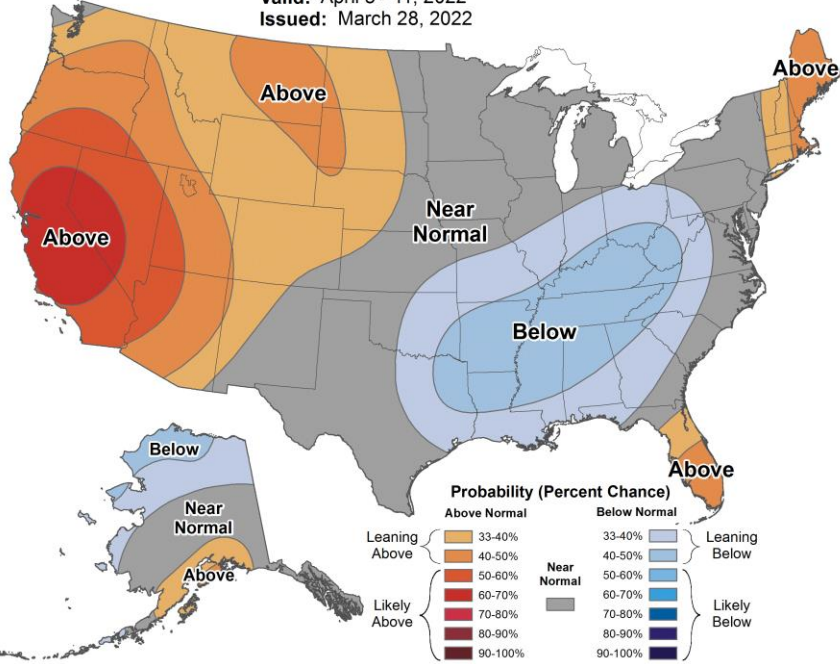
Week 2 – Temperature and Precipitation



8-14 Day Temperature Outlook



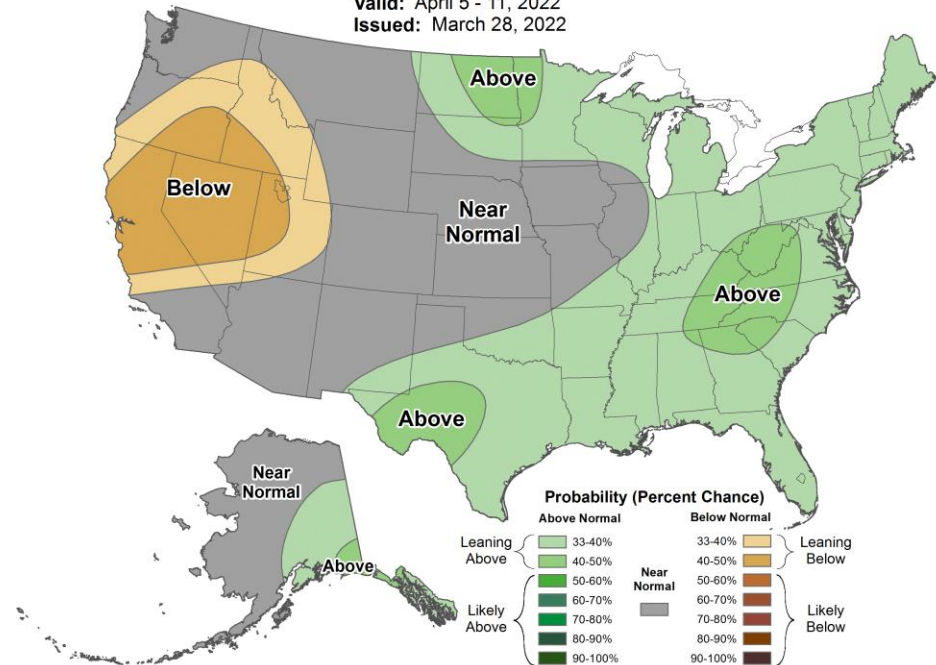
Valid: April 5 - 11, 2022
 Issued: March 28, 2022



8-14 Day Precipitation Outlook



Valid: April 5 - 11, 2022
 Issued: March 28, 2022

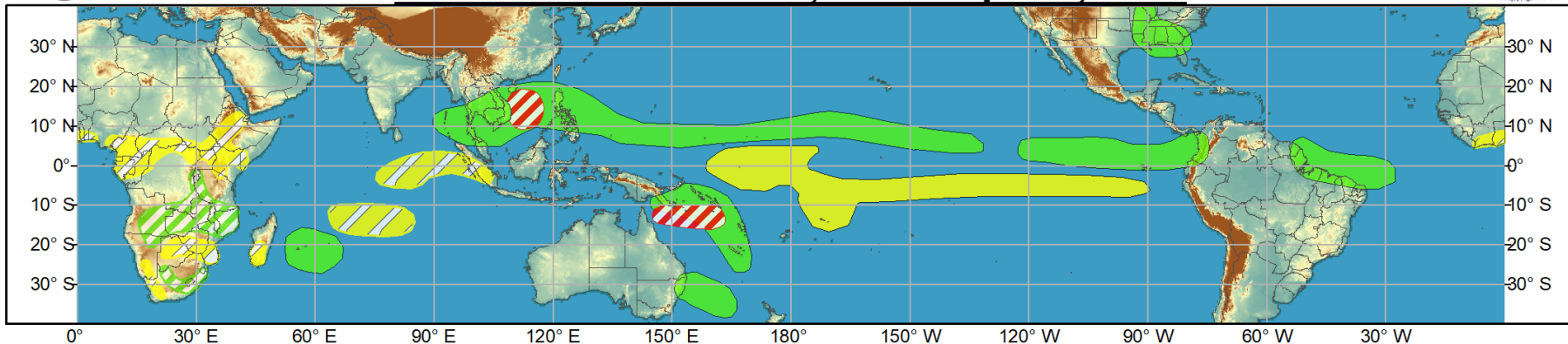




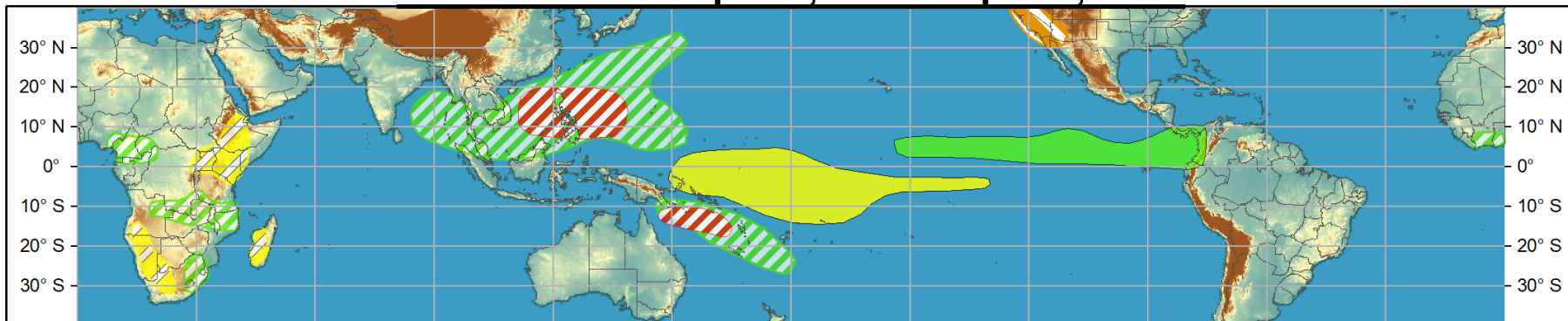
Global Tropics Hazards and Benefits Outlook - Climate Prediction Center



Week 1 - Valid: Mar 30, 2022 - Apr 05, 2022



Week 2 - Valid: Apr 06, 2022 - Apr 12, 2022



Confidence
High Moderate

- Tropical Cyclone Formation** Development of a tropical cyclone (tropical depression - TD, or greater strength).
- Above-average rainfall** Weekly total rainfall in the upper third of the historical range.
- Below-average rainfall** Weekly total rainfall in the lower third of the historical range.
- Above-normal temperatures** 7-day mean temperatures in the upper third of the historical range.
- Below-normal temperatures** 7-day mean temperatures in the lower third of the historical range.

Produced: 03/29/2022

Forecaster: Pugh

Product is updated once per week, except from 6/1 - 11/30 for the region from 120E to 0, 0 to 40N. The product targets broad scale conditions integrated over a 7-day period for US interests only. Consult your local responsible forecast agency.

